

GIANT SKIPPERS

Family: Hesperiiidae, Subfamily: Megathyminae

Yucca Giant-Skipper: *Megathymus yuccae*

Host: Yuccas (*Yucca aloifolia*, *Y. gloriosa*, *Y. filamentosa*, *Y. flaccida*)



SATYRS

Family: Nymphalidae, Subfamily: Satyrinae

Southern Pearly-eye: *Enodia portlandia* *

Host: Switchcane (*Arundinaria tecta*)

Creole Pearly Eye: *Enodia creola*

Host: Switchcane (*Arundinaria tecta*)

Appalachian Brown: *Satyroides appalachia*

Host: *Carex* spp., *Rhynchospora* spp.

Gemmed Satyr: *Cyllopsis gemma* *

Host: Woodoats (*Chasmanthium laxum*, *C. sessiliflorum*)

Carolina Satyr: *Hermeuptychia sosybius* *

Host: St. Augustine (*Stenotaphrum secundatum*)

Georgia Satyr: *Neonympha areolata*

Host: Sawgrass (*Cladium jamaicense*), Sedges (*Cyperaceae*)

Little Wood Satyr: *Megisto cymela* *

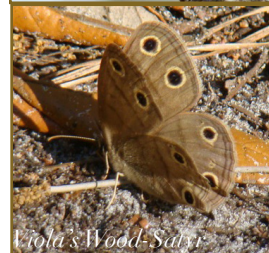
Host: St. Augustine (*Stenotaphrum secundatum*)

Viola's Wood-Satyr: *Megisto viola* *

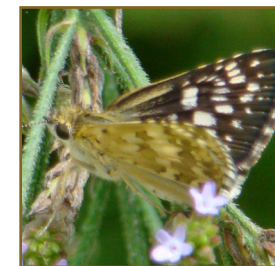
Host: Longleaf Woodoats (*Chasmanthium sessiliflorum*), St. Augustine (*Stenotaphrum secundatum*)

Common Wood-Nymph: *Cercyonis pegala*

Host: Bluestems (*Andropogon* spp.), Purpletop (*Tridens flavus*)



Butterflies need native host plants to complete their life cycle. The larvae of many species can only survive on specific plants; think of monarchs and milkweeds, longwings and passionflowers. The host plants listed here are native to the coastal region of Georgia & South Carolina. They provide a critical link for butterfly survival. Protect native plants in your landscape and grow them in your gardens to support these important pollinators.



Provided by Coastal WildScapes
(www.coastalwildscapes.org)



in cooperation with the St. Catherines Island Foundation.
Research, Design & Photographs by Christa F. Hayes.
Illustrations by Philip Henry Gosse circa 1838

Coastal Butterflies: Swallowtails to Brushfoots
is available at www.coastalwildscapes.org



COASTAL BUTTERFLIES

Skippers to Satyrs

* Butterflies documented on St. Catherines Island

SKIPPERS: Family: HesperIIDae

SPREAD-WING SKIPPERS

Family: HesperIIDae, Subfamily: Pyrginae

Silver-spotted Skipper: *Epargyreus clarus* *
Host: Black Locust (*Robinia pseudoacacia*), Tall Indigo Bush (*Amphora fruticosa*), American Wisteria (*Wisteria frutescens*)

Long-tailed Skipper: *Urbanus proteus* *
Host: Spurred Buttery-pea (*Centrosema virginianum*), Atlantic Pigeonwings (*Clitoria mariana*), American Wisteria (*Wisteria frutescens*)

Dorantes Longtail: *Urbanus dorantes* *
Host: Spurred Buttery-pea (*Centrosema virginianum*), Atlantic Pigeonwings (*Clitoria mariana*)

Northern Cloudywing: *Thorybes pylades* *
Host: *Fabaceae*, Lespedeza (*Lespedeza hirta*)

Southern Cloudywing: *Thorybes bathyllus*
Host: *Fabaceae*, Lespedeza (*Lespedeza hirta*)

Hayhurst's Scallopwing: *Staphylus hayhurstii*
Host: *Chenopodiaceae*, Pitseed Goosefoot (*Chenopodium berlandieri*)

Confused Cloudywing: *Thorybes confusus*
Host: *Fabaceae*, Lespedeza (*Lespedeza hirta*)

Sleepy Duskywing: *Erynnis brizo*
Host: Scrub Oaks, Bluejack (*Quercus incana*), Turkey Oak (*Quercus laevis*)

Juvenal's Duskywing: *Erynnis juvenalis* *
Host: White Oaks (*Quercus alba*, *Q. austrina*, *Q. virginiana*)

Horace's Duskywing: *Erynnis horatius* *
Host: Red Oaks (*Quercus falcata*, *Q. myrtifolia*, *Q. nigra*, *Q. pagoda*)

Zarucco Duskywing: *Erynnis zarucco* *
Host: *Fabaceae*, Lespedezas (*Lespedeza hirta*), Black Locust (*Robinia pseudoacacia*), Danglepod (*Sesbania herbacea*)

Wild Indigo Duskywing: *Erynnis baptisiae*
Host: Rattleweed (*Baptisia tinctoria*), Lupine (*Lupinus perennis*), Crown Vetches (*Vicia acutifolia*, *V. caroliniana*)

Common Checkered-Skipper: *Pyrgus communis* *
Host: Mallows & Hibiscus (*Malvaceae* spp.)

Tropical Checkered-Skipper: *Pyrgus oileus* *
Host: Mallows & Hibiscus (*Malvaceae* spp.)

Common Sootywing: *Pholisora catullus*
Host: Pitseed Goosefoot (*Chenopodium berlandieri*)

GRASS SKIPPERS

Family: HesperIIDae, Subfamily: Hesperinae

Swarthy Skipper: *Nastra lherminier* *
Host: Little Bluestem Grass (*Schizachyrium scoparium*)

Clouded Skipper: *Lerema accius* *
Host: Coast Cockspur Grass (*Echinochloa walteri*), St. Augustine (*Stenotaphrum secundatum*)

Least Skipper: *Ancyloxypha numitor*
Host: Southern Cutgrass (*Leersia oryzoides*), Giant Cutgrass (*Zizaniopsis miliacea*)

Southern Skipperling: *Copaeodes minima* *
Burmuda Grass (*Cynodon dactylon*)

Fiery Skipper: *Hylephila phyleus* *
St. Augustine (*Stenotaphrum secundatum*)

Sachem: *Atalopedes campestris* *
Host: St. Augustine (*Stenotaphrum secundatum*)



Least

Dun

Byssus

Tawny-edged Skipper: *Polites themistocles*
Host: Panic Grasses (*Dichanthelium* & *Panicum* spp.)

Crossline Skipper: *Polites origenes*
Host: Little Bluestem Grass (*Schizachyrium scoparium*), Purpletop (*Tridens flavus*)

Whirlabout: *Polites vibex* *
Host: Bermudagrass (*Cynodon dactylon*), Thin Paspalum (*Paspalum setaceum*), St. Augustine (*Stenotaphrum secundatum*)

Southern Broken-Dash: *Wallengrenia otho* *
Host: St. Augustine Grass (*Stenotaphrum secundatum*)

Northern Broken-Dash: *Wallengrenia egeremet* *
Host: Switchgrass (*Panicum virgatum*)

Little Glassywing: *Pompeius verna*
Host: Purpletop Grass (*Tridens flava*)

Delaware Skipper: *Anatrytone logan*
Host: Switchgrass (*Panicum virgatum*)

Byssus Skipper: *Problema byssus*
Host: Eastern Gammagrass (*Tripsacum dactyloides*)

Rare Skipper: *Problema bulenta*
Host: Tall Cordgrass (*Spartina cynosuroides*), Giant Cutgrass (*Zizaniopsis miliacea*)

Hobomok Skipper: *Poanes hobomok*
Host: Grasses (*Panicum* spp.)

Zabulon Skipper: *Poanes zabulon*
Host: Lovegrass (*Eragrostis* spp.) & Purpletop Grass (*Tridens flava*)



Ocola

S. Skipperling

Saltmarsh

Broad-winged Skipper: *Poanes viator*
Host: Tall Cordgrass (*Spartina cynosuroides*), Giant Cutgrass (*Zizaniopsis miliacea*)

Yehl Skipper: *Poanes yehl*
Host: Switchcane (*Arundinaria tecta*)

Aaron's Skipper: *Poanes aaroni*
Host: Salt Grass (*Distichlis spicata*), Smooth Cordgrass (*Spartina alterniflora*)

Palmetto Skipper: *Euphyes arpa* *
Host: Saw Palmetto (*Serenoa repens*)

Palatka Skipper: *Euphyes pilatka*
Host: Sawgrass (*Cladium jamaicense*)

Berry's Skipper: *Euphyes berryi*
Host: Sedges (*Carex* spp.)

Dion Skipper: *Euphyes dion*
Host: Sedges (*Carex* spp.), Woolgrass (*Scirpus cyperinus*)

Duke's Skipper: *Euphyes dukesi*
Host: Sedges (*Carex* spp.)

Two-spotted Skipper: *Euphyes bimacula*
Host: Sedges (*Carex* spp.)

Dun Skipper: *Euphyes vestris* *
Host: Sedges (*Cyperaceae* spp.)

Lace-winged Roadside-Skipper: *Amblyscirtes aesculapius* *
Host: Switchcane (*Arundinaria tecta*)

Eufala Skipper: *Lerodea eufala* *
Host: St. Augustine (*Stenotaphrum secundatum*)

Twin-spot Skipper: *Oligoria maculata* *
Host: Grasses (*Andropogon* spp.)

Brazilian Skipper: *Calpodus ethlius* *
Host: Canna (*Canna flaccida*)

Salt Marsh Skipper: *Panoquina panoquin* *
Host: Saltgrass (*Distichlis spicata*)

Ocola Skipper: *Panoquina ocola* *
Host: Southern Cutgrass (*Leersia oryzoides*)