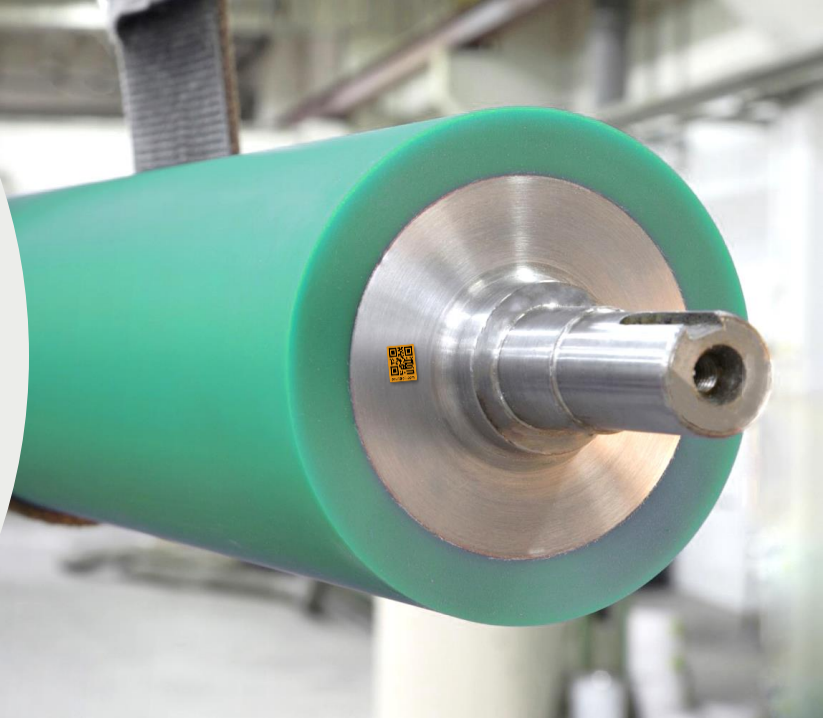




## Android application manual



### Dear customer

Thank you for choosing countroll®!

This manual covers the Android application and explains basic functionalities as well as more advanced actions.

If you still have questions after consulting this documentation, you can always contact us.

### What are the functionalities

- Overview of all your rollers
- Possibility to extend to other assets
- Access to all individual roller and roller cover data:
  - timeline
  - label date
  - inspection reports
  - technical datasheets
  - technical drawings
- Edit the roller core properties and add a roller description
- Create a timeline by adding events manually
- Upload pictures and other documents to events
- Identify your rollers using your own numbering system
- Add a physical location to your rollers

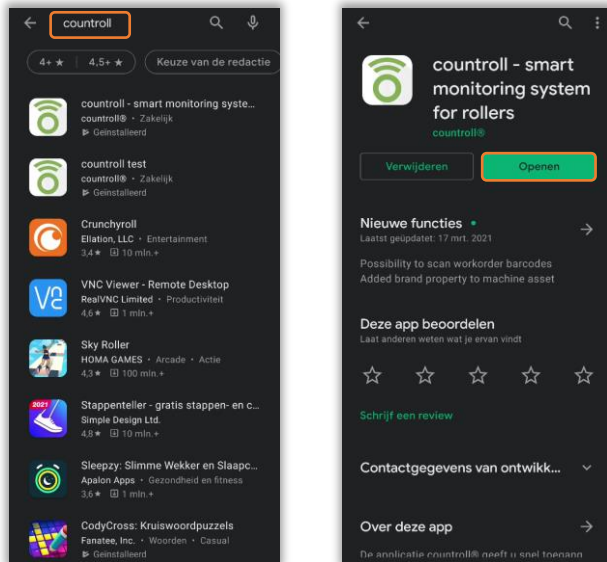
# Table of contents

Introduction.....	<a href="#">1</a>
Table of contents.....	<a href="#">2</a>
Android.....	
Downloading app.....	<a href="#">3</a>
Login screen.....	<a href="#">3</a>
Home screen.....	<a href="#">4</a>
Scan ID.....	<a href="#">5</a>
Profile page.....	<a href="#">6</a>
Uploading files/pictures/audio.....	<a href="#">6</a>
Timeline.....	<a href="#">7</a>
Creating events.....	<a href="#">7</a>
Linking/unlinking locations.....	<a href="#">8</a>
Add picture.....	<a href="#">9</a>
Manual initialise.....	<a href="#">10</a>
Copying countroll® label.....	<a href="#">11</a>
Location Admin.....	<a href="#">12</a>
Linking asset to location.....	<a href="#">15</a>

## Android – Downloading app

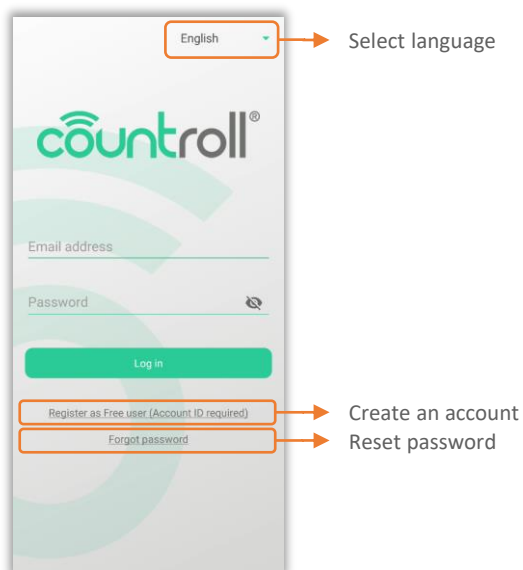
The countroll® app is currently only available for Android. It can be downloaded via the Google Play Store:

- Search for the term **countroll**
- Select **countroll – asset monitoring**
- Install and open the app



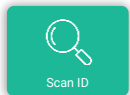
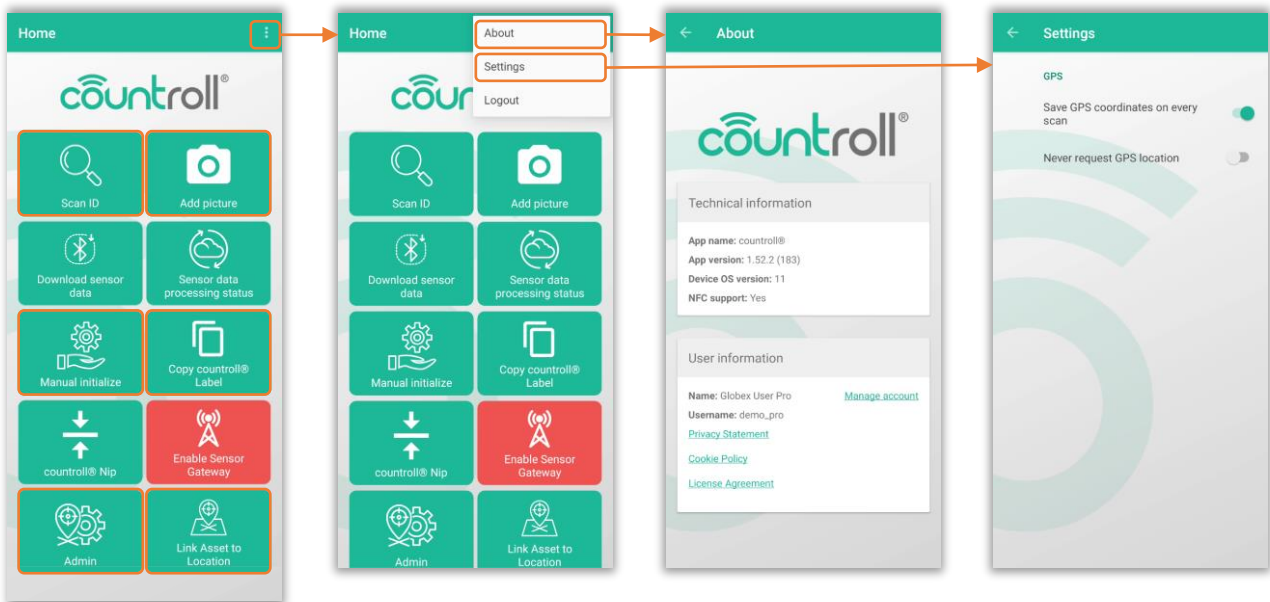
## Android – Login screen

The account to log in to the Android app is the same as for the web portal. First select the language, then enter the account details and click Log in.

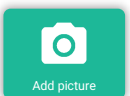


## Android – Home screen

The roller management functionalities are highlighted in orange below and will be discussed in more detail. Under the menu button (3 dots at the top right) is the functionality to log out.



Scan ID: scanning a QR code/barcode of a roller or position to consult its details



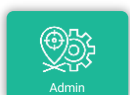
Add picture: adding a picture(s) on the timeline of an asset



Manual initialize: the customer can also add rollers/assets to the system themselves using the countroll® QR codes



Copy countroll® label: copy a label without creating a new countroll® ID

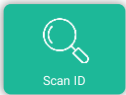


Location Admin: managing locations and linking barcodes/QR codes to a location



Link asset to location: manually linking a roller/asset to an existing location

## Android – Scan ID



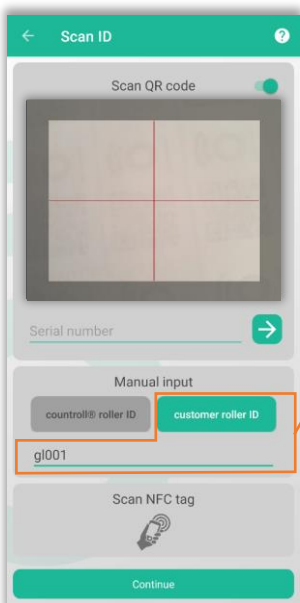
The Scan ID functionality allows the user to scan the QR code or barcode of a roller or a location. The details of a roller can be requested in several ways:



- scanning a QR code:  
When opening Scan ID, the camera is activated by default. Just hold the QR code in front of the camera (just check the focus) and the profile page of the roller will open automatically.

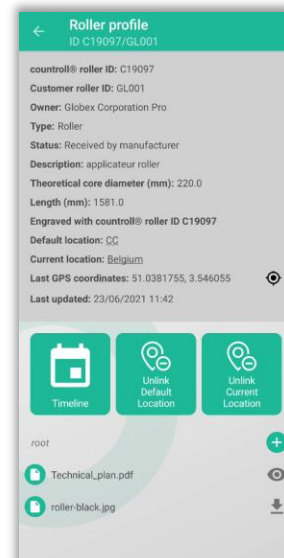
- entering the QR code manually:  
The QR code or barcode can also be entered manually. Enter the code in the **Serial Number** field, then press the → button.

- manually entering the countroll® ID:  
By default, the **countroll® roller ID** button is selected. You can now enter the countroll® roller ID in the field below; the **C** for countroll® is already there. Finally, press the **Continue** button to open the roller's profile page.



- manually entering the customer roller ID:  
Customers often assign their own numbering to their rollers. Since the customer is more familiar with this, we also give the option to search for this ID. Click on the **Customer Roller ID** button and enter the ID you are looking for. In the example on the left, the roller ID **gl001** has been entered. Finally, press the **Continue** button to open the roller's profile page.

The above actions all produce the same result: the roller's profile page will open.



# Android – Scan ID

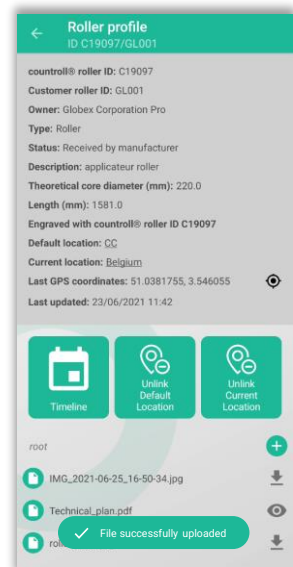
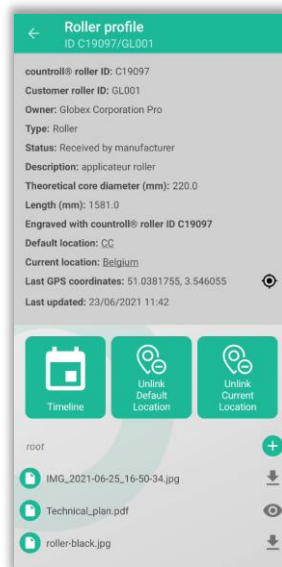
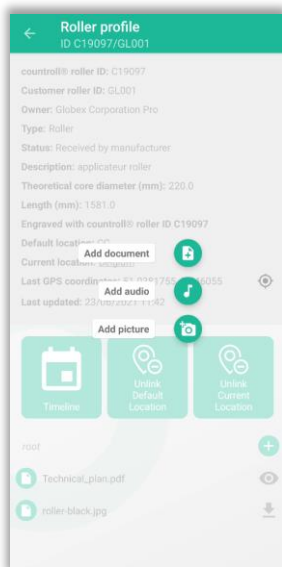
## Profile page

The profile page is displayed after scanning a roller/asset. It is the smartphone version of the Info&Documents page on the web portal.



- The page contains the properties and related documents of the core of the roller.
- In addition to the roller, locations also have a profile page where the details are listed. The default and current location are links to these profile pages.
- The location where the QR code was last scanned is also shown with the 📍 icon next to it to view the location on Google Maps.
- With these buttons the timeline can be consulted or the roller can be linked to a location.
- At the bottom of the page are the related documents, possibly in a folder structure.

## Uploading files/pictures/audio



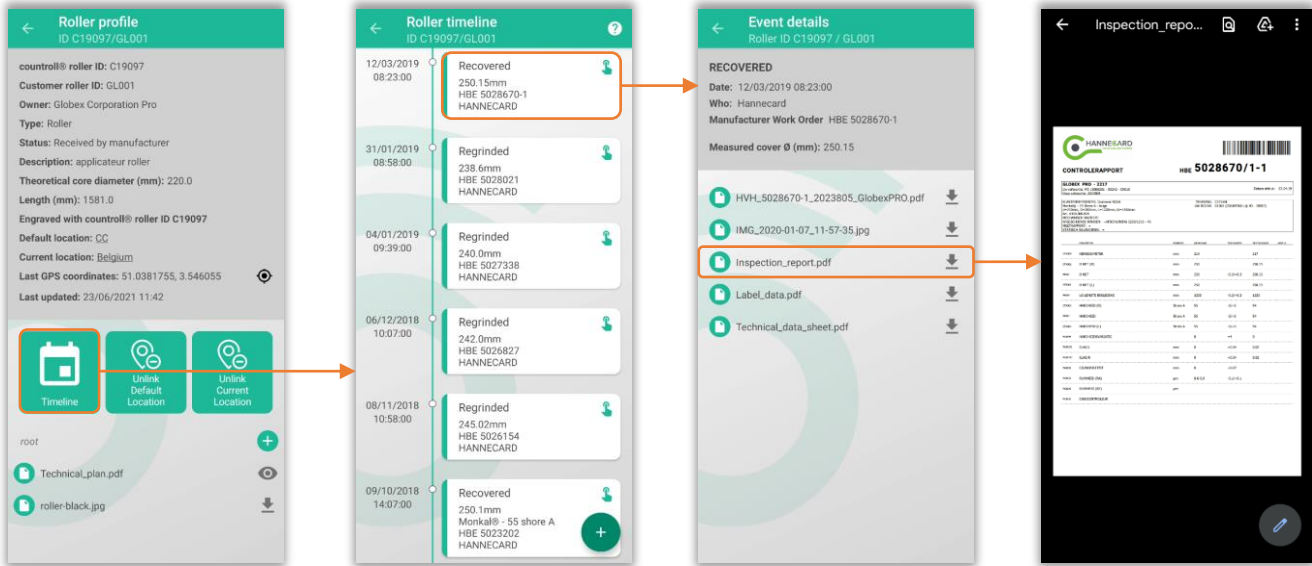
Uploading files/photos/audio is very easy:

- first click on the + icon next to the root folder (or another folder)
- choose what you want to upload
- take e.g. a picture
- the picture is uploaded to the cloud platform
- a confirmation is shown on the screen and the photo becomes immediately available

# Android – Scan ID

## Timeline page

Press the **Timeline** button on the profile page to show the overview of the events. These are listed chronologically, with the most recent at the top. Tap an event to see its details and related documents. That way, for a recovered event, you can consult the inspection report uploaded by the recoverer.

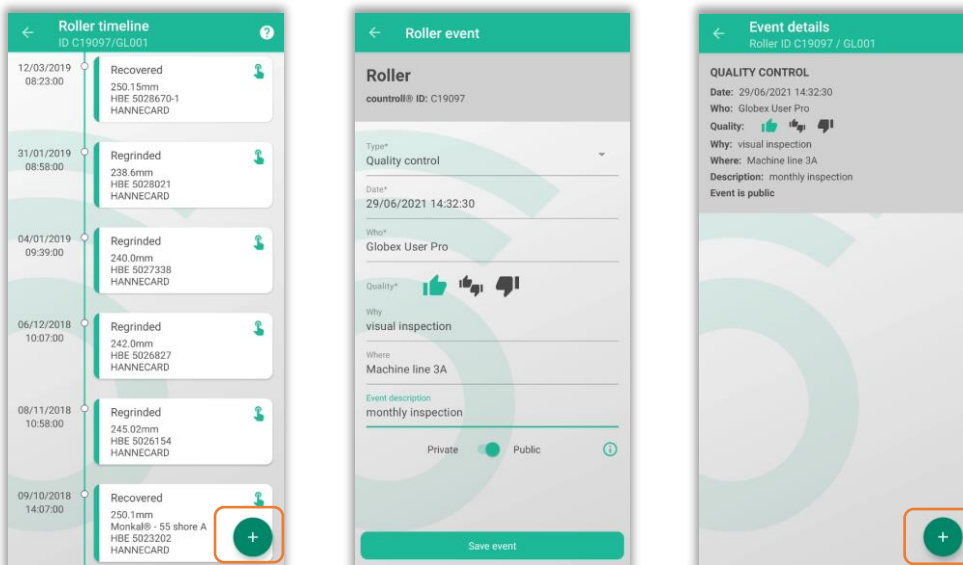


## Adding events

Adding an event is done as follows:

- go to the timeline and press the **+** icon at the bottom right
- select event type
- fill in the different fields
- choose whether the event should be private or public at the bottom
- press the Save event button

A private event will only be visible to the customer on the timeline.  
A public event by both the customer and the recoverers.



Files/pictures/audio can also be uploaded to an event. For doing this, click again on the **+** icon at the bottom right.

## Android – Scan ID

### Linking/unlinking locations

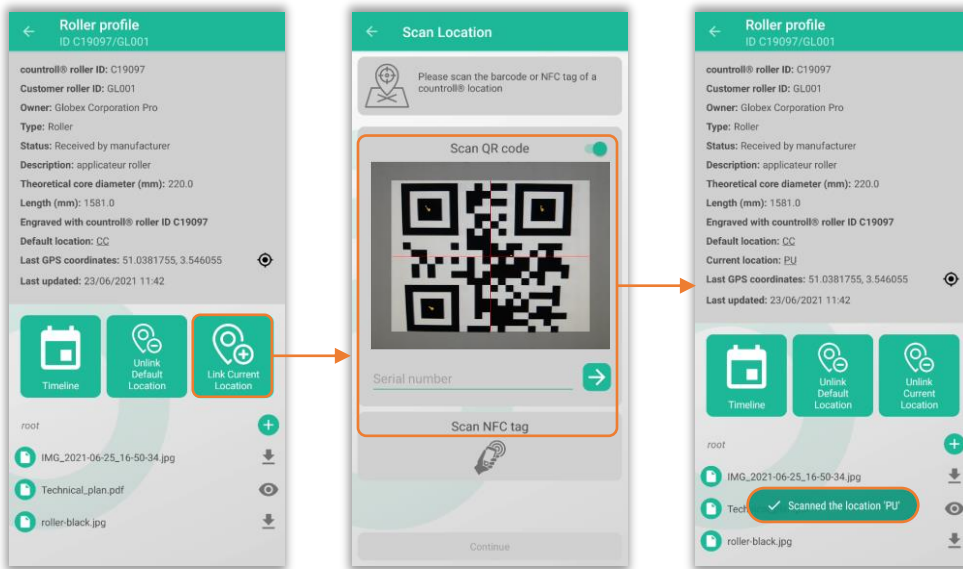
As already mentioned in the chapter of the web portal, we distinguish 2 types of location:

- **default location:** the location where the asset should be operational
- **current location:** the location where the asset is currently physically located

From the profile page of a roller/asset both locations can be set or adjusted:

- click the **Link Default/Current Location** button
- scan the QR code/barcode of the location or enter the name in the **serial number** field
- a message appears that the linking was successful

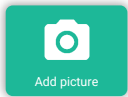
To unlink, simply click the **Unlink Default/Current Location** button



A faster way to link rollers/assets to a location is via the **Link asset to location** button (see later in this document)



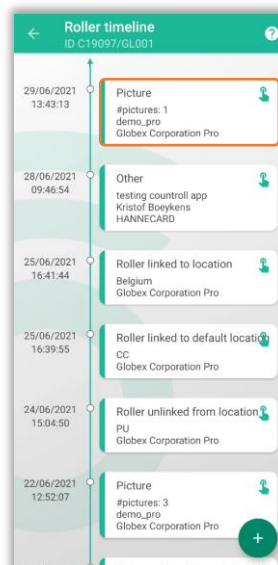
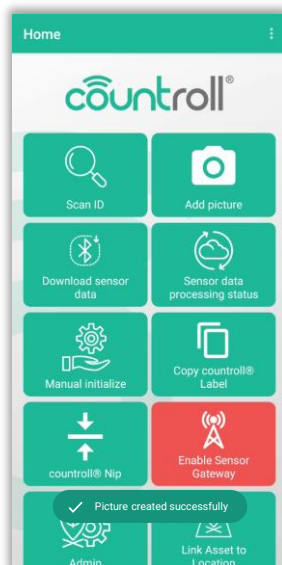
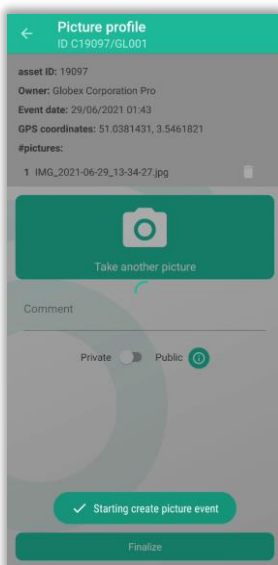
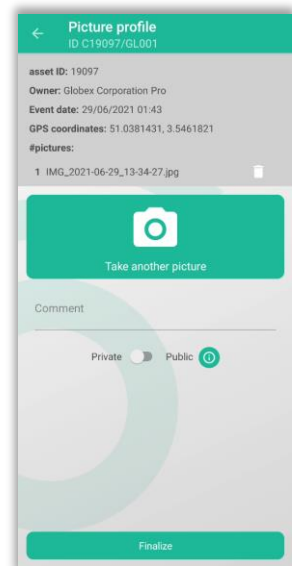
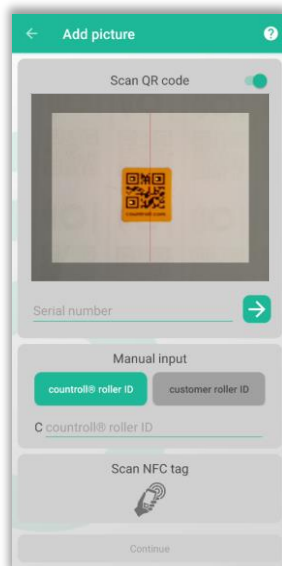
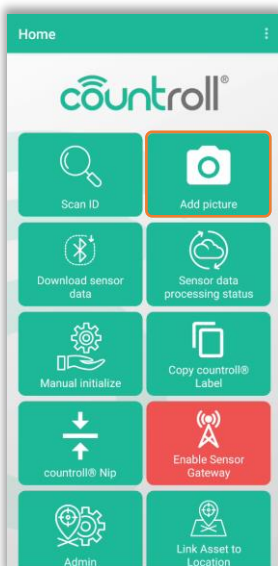
## Android – Add picture



The Add picture functionality will add 1 or more pictures as an event on the timeline of the asset. The GPS coordinates are also stored in the event.

How to add pictures to an asset?

- on the Home screen, click on Add picture
- scan the QR code of the asset or enter its ID manually
- take a picture
- the overview of taken pictures is shown + GPS coordinates
- add additional pictures of needed
- click on Finalize to create the picture event on the timeline

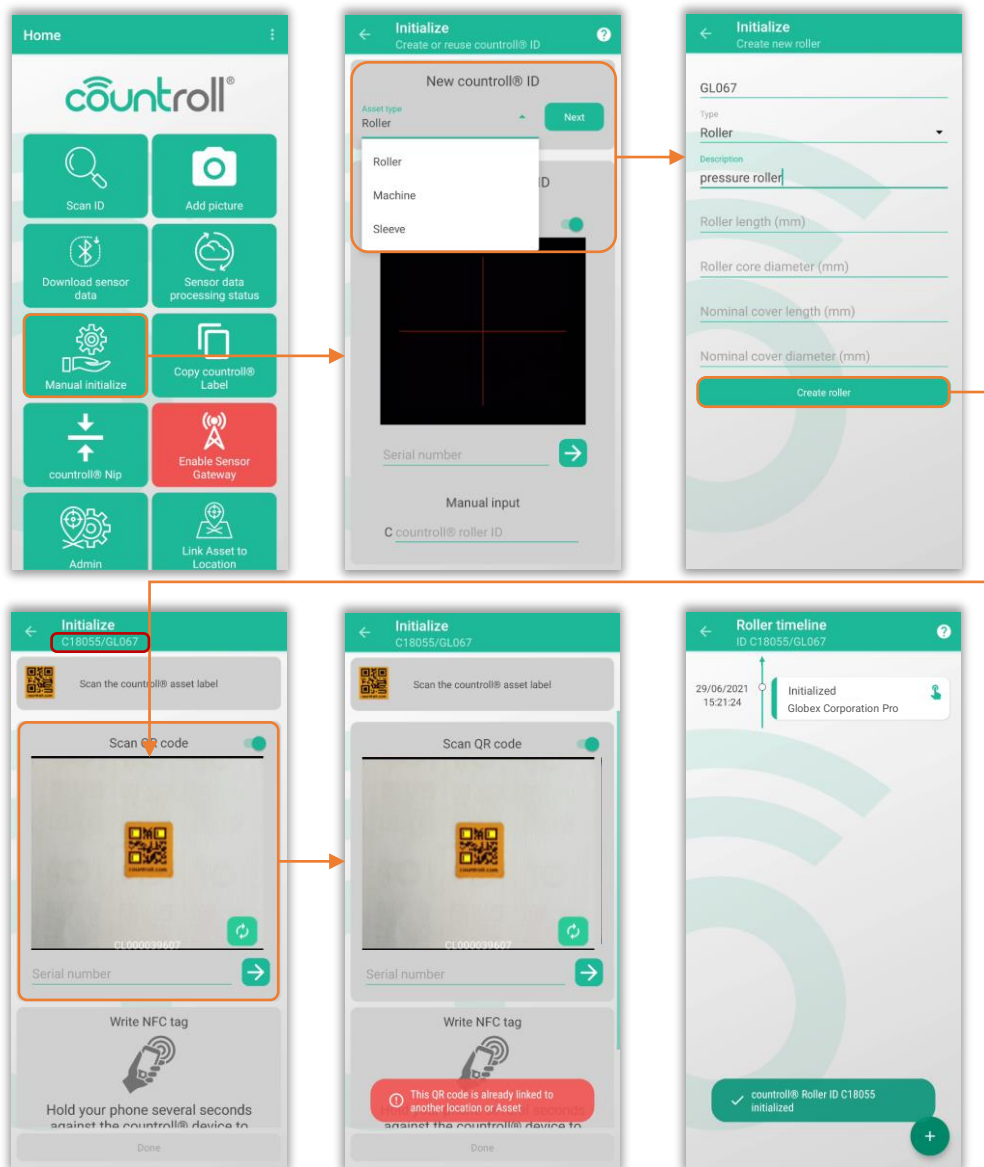


## Android – Manual initialise

The customer has the option to add rollers to the countroll® system themselves. For this, he can purchase QR codes from countroll®. These labels have been specially developed for industrial applications (resistant to high temperatures, chemical products such as solvents and scratch and wear resistant). For locations, a customer can use his own labels (QR codes or barcodes).

How to create a new roller?

- on the Home screen, click on Manually initialize
- under the **New countroll® ID** section choose the asset type you wish to add (by default this is a roller) and press **Next**
- fill in the fields for which you have data; the field customer role ID can be interesting because you can search for it later
- in the next screen the QR code will be scanned; if that QR code has already been used, an error will be displayed. Choose another QR label to initialize.
- when the roller has been created, the timeline will be displayed with the new countroll® ID listed in the title at the top.



The first screen of **Manual Initialize** also includes an **Existing countroll® ID** section. This functionality has meanwhile been replaced by **Copy countroll® label** on the Home screen and will be removed from Manual Initialize in time.

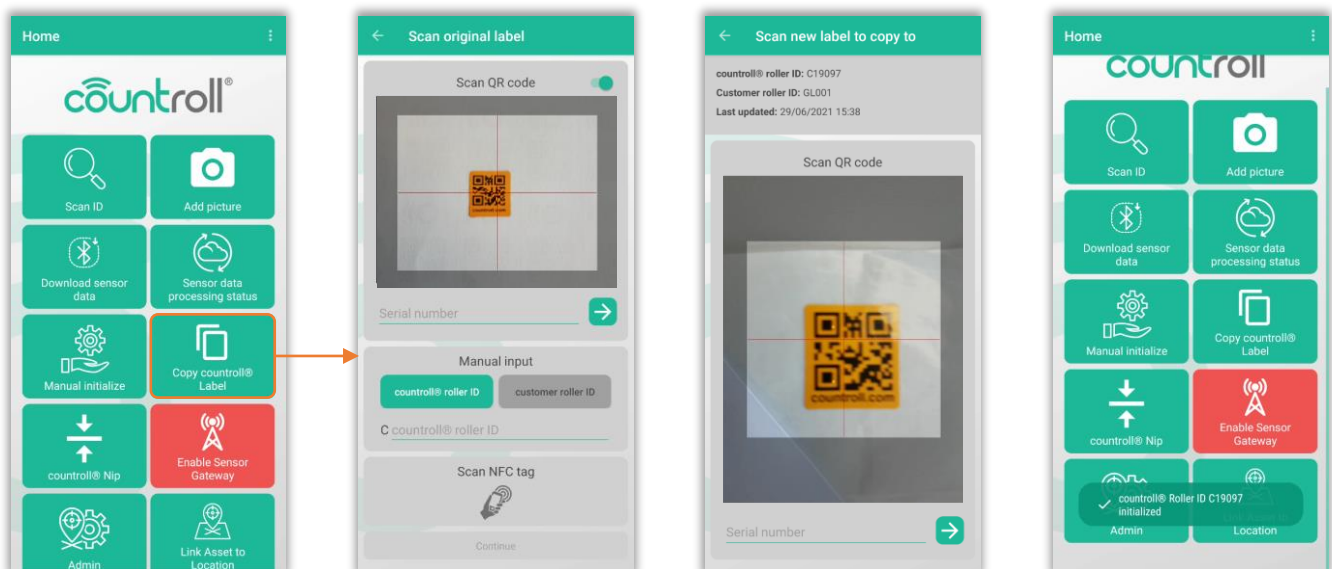
## Android – Copy countroll® label



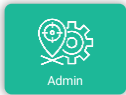
This functionality was previously included in **Manual Initialize** but has now been given its own button on the Home screen. This functionality does what the name says: you can copy an existing QR code to a new one. This application can be useful to label an existing roller/asset with 2 labels: one on each side.

Copying a countroll® label is very easy:

- select copy countroll® label on the Home screen
- scan the original QR code (or enter the countroll® ID manually)
- scan the new QR code
- a confirmation is shown that the new QR code is linked to the roller/asset



## Android – Location Admin



The **Location Admin** functionality refers to the administration or management of locations on Android:

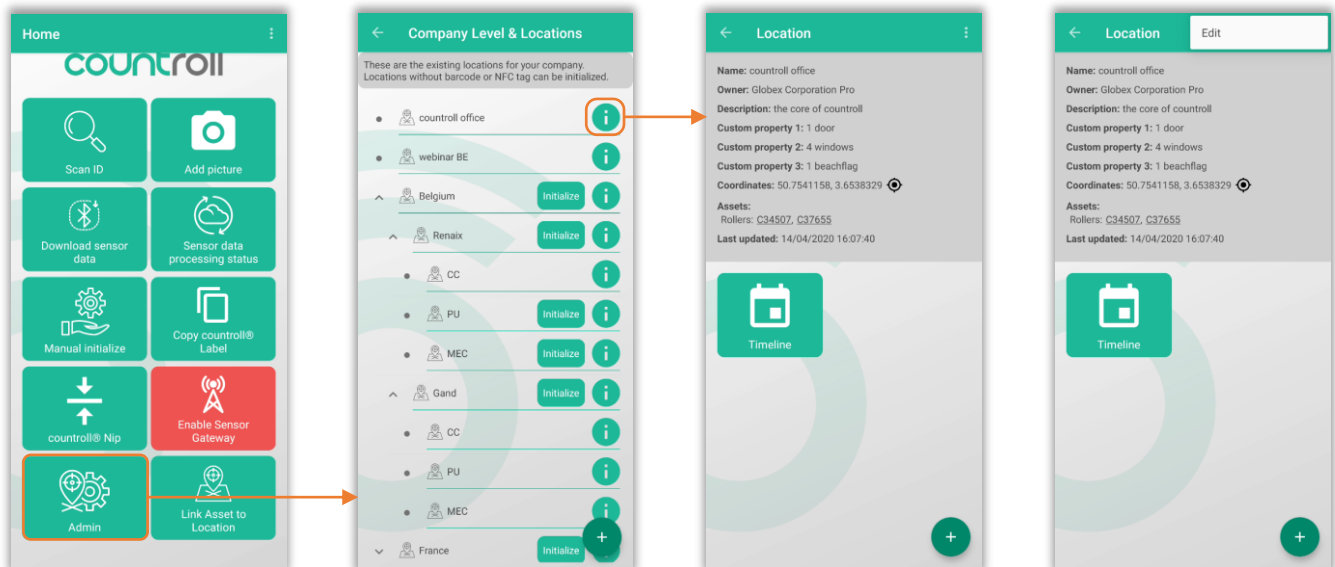
- consulting existing locations
- creating new locations
- linking QR code/barcode to a location

### Consulting existing locations

To view the existing locations, simply click on the button in the Home screen. The top-level locations are shown. Click on the name of a location to make any underlying levels visible as well.

The locations showing the **Initialize** button next to it, are not yet linked to a QR code/barcode (see section below Linking QR code/barcode to a location).

On a location profile page, you can click on the 3 dots top right to Edit or Remove the location. Removal is only possible when no assets are linked to the location.



# Android – Location Admin

## Creating new locations

Locations can also be created on Android. However, moving locations to a sublevel is only available on the web portal.



## Android – Location Admin

### Linking a QR code/barcode to a location

The locations showing the **Initialize** button next to it, are not yet linked to a QR code/barcode.

- press the **Initialize** button
- fill in any missing fields or add the current GPS coordinates
- scan the QR code/barcode of the location
- if the Qr code/barcode is already used for another identification, an error message will be shown
- you will also immediately be asked if you want to link a role/asset to this location

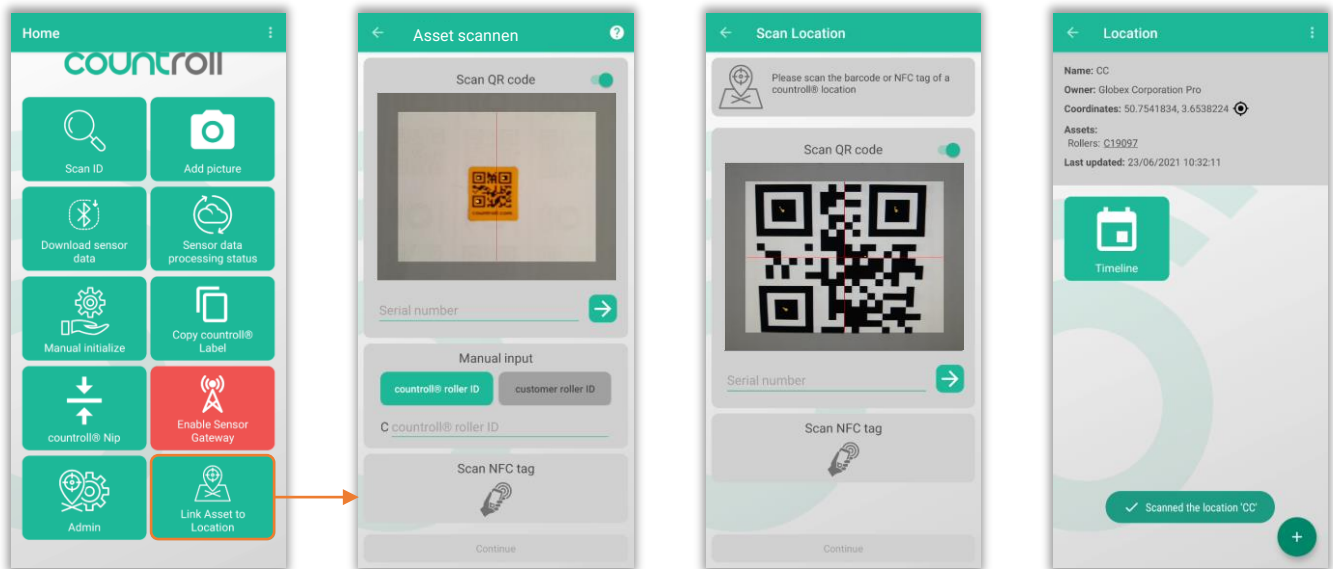


## Android – Link asset to location



A roller/asset can be linked to a location via the **Link asset to location** functionality from the Home screen:

- click the button Link asset to location
- scan the QR code of the roller (or enter the ID manually)
- scan the QR code of the location (or enter the ID manually)
- the roller is now linked to the location





cōuntroll®

Klein Frankrijkstraat 34  
B - 9600 Ronse

+32 55 23 76 30

[www.countroll.com](http://www.countroll.com)  
[info@countroll.com](mailto:info@countroll.com)