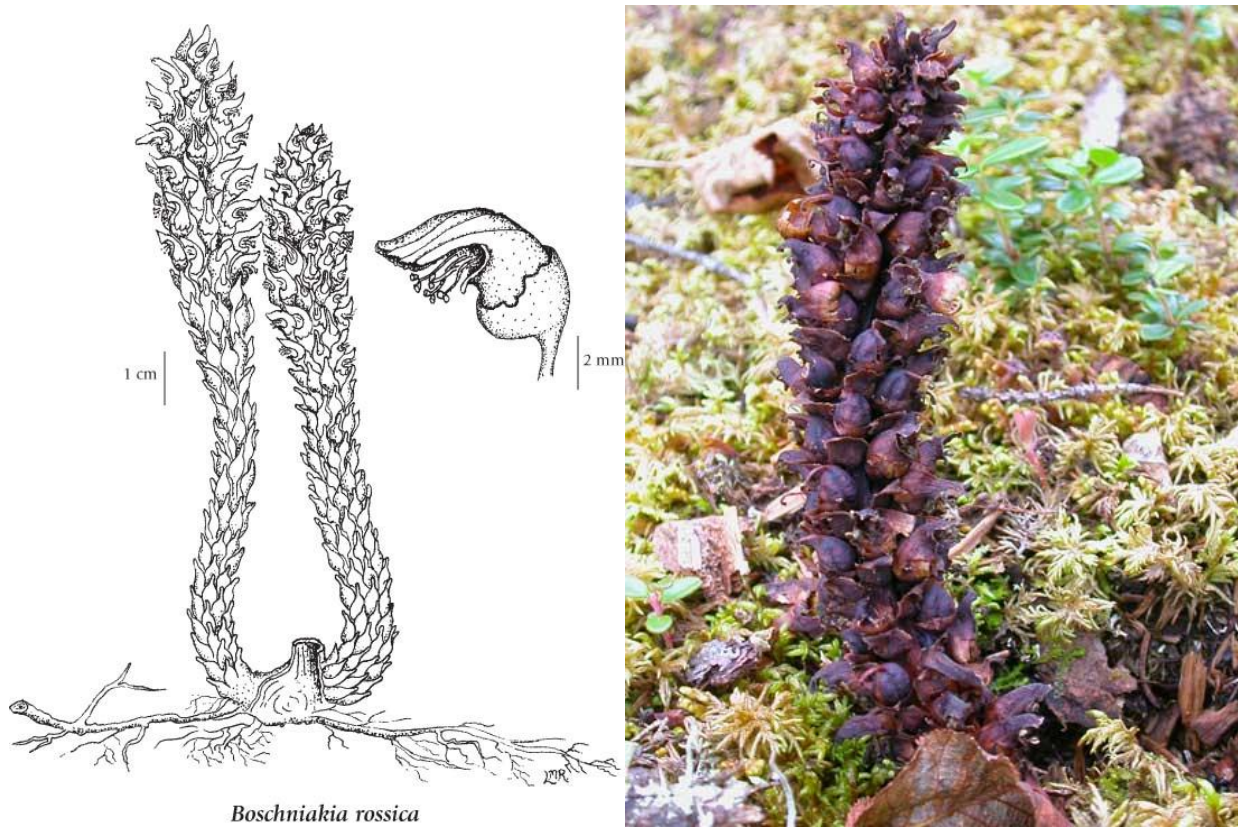


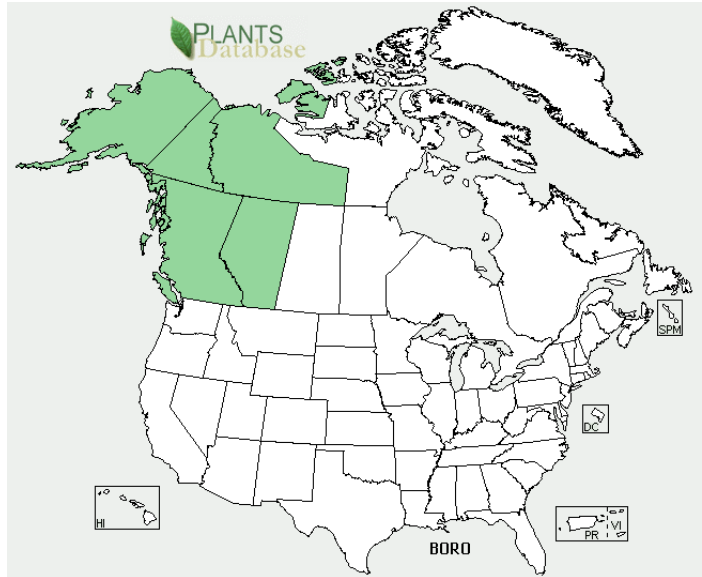
**Plant Propagation Protocol for *Boschniakia rossica***  
 ESRM 412 – Native Plant Production



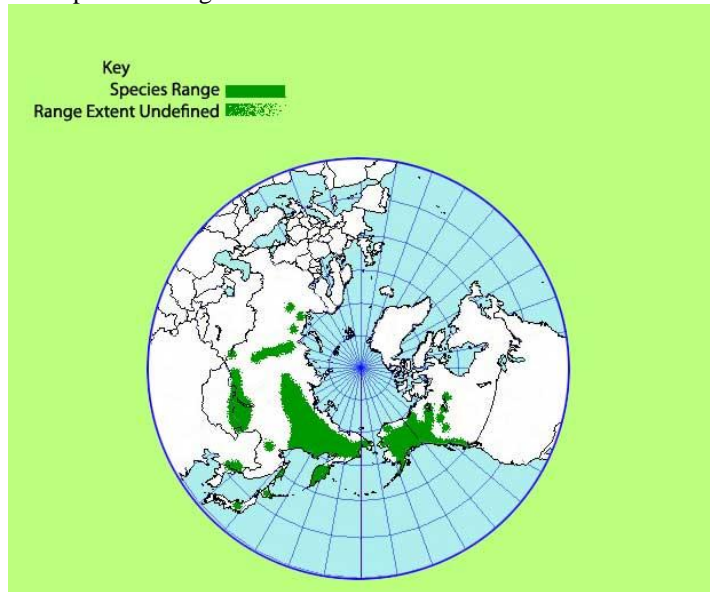
*Boschniakia rossica*

<b>TAXONOMY</b>	
<b>Family Names</b>	
Family Scientific Name:	Orobanchaceae
Family Common Name:	Broom-rape
<b>Scientific Names</b>	
Genus:	<i>Boschniakia</i>
Species:	<i>rossica</i>
Species Authority:	Cham. & Schlecht
Variety:	
Sub-species:	
Cultivar:	
Authority for Variety/Sub-species:	
Common Synonym(s) (include full scientific names)	
Common Name(s):	Northern Groundcone, poque
Species Code (as per USDA Plants database):	BORO
<b>GENERAL INFORMATION</b>	

Geographical range (distribution maps for North America and Washington state)



From plants.usda.gov



From:

[http://www.flora.dempstercountry.org/0.Site.Folder/Species.Program/Species.php?species\\_id=Boschni.rossi](http://www.flora.dempstercountry.org/0.Site.Folder/Species.Program/Species.php?species_id=Boschni.rossi)

Ecological distribution (ecosystems it occurs in, etc):	Thickets, woodlands, heaths and tundra. <sup>(2)</sup>
Climate and elevation range	Found in mountains to at least 1,200 meters. <sup>(3)</sup>
Local habitat and abundance; may include commonly associated species	Widely distributed throughout Alaska and the Yukon. Also found in northeastern Asia. <sup>(2)</sup>
Plant strategy type / successional stage (stress-tolerator, competitor, weedy/colonizer, seral, late successional)	Root parasite. Lacking in chlorophyll. <sup>(2)</sup>
Plant characteristics (life form (shrub,	Holoparasitic forb <sup>(4)</sup>

grass, forb), longevity, key characteristics, etc)	
<b>PROPAGATION DETAILS</b>	
Currently there is little to no information on propagation of this species. However, there are many ongoing medical trials taking place on a compound found in <i>Boschniakia rossica</i> that may have significance in terms of brain chemistry. Therefor it is expected that more information on propagation will become available soon. <sup>(5)</sup>	
Ecotype:	
Propagation Goal:	
Propagation Method:	
Product Type:	
Stock Type:	
Time to:	
Target Specifications :	
Propagule:	
Propagule Processing/Propagule Characteristics:	
Pre-Planting Propagule Treatments:	
Growing Area Preparation / Annual Practices for Perennial Crops:	
Establishment Phase:	
Length of Establishment Phase:	
Active Growth:	
Length of Active Growth Phase:	
Hardening Phase:	
Length of Hardening Phase:	
Harvesting, Storage and Shipping:	
Length of Storage:	
Guidelines for Outplanting / Performance on Typical Sites :	
Other Comments:	<i>Boschniakia rossica</i> is holoparasitic and therefore cannot be grown without its host plant(s) <sup>(3)</sup> . Generally believed to be parasitic purely on <i>Alnus crispa</i> but there are accounts of parasitism on other species of <i>Alnus</i> as well as <i>Betula</i> , <i>Vaccinium</i> , <i>Picea</i> , <i>Salix</i> , and <i>Chamaedaphne</i> . <sup>(2)</sup> Can be a significant pest by affecting tree growth rates.
<b>INFORMATION SOURCES</b>	
References (full citations):	(1) "Boschniakia rossica." <i>Central Yukon Species Inventory Project</i> . N.p., n.d. Web. 10 May 2012. < <a href="http://www.flora.dempstercountry.org/0.Site.Folder/Species.Program/Species.php?species_id=Boschni.rossi">http://www.flora.dempstercountry.org/0.Site.Folder/Species.Program/Species.php?species_id=Boschni.rossi</a> >.  (2) Welsh, Stanley. <i>Anderson's Flora of Alaska and Adjacent Parts of Canada</i> . Provo, UT: Brigham Young

	<p>U Press, 1974. 302.</p> <p>(3) Hulten, Eric. <i>Flora of Alaska and neighboring Territories. A Journal of the Vascular Plants</i>. Stanford, Ca: Stanford University Press, 1974.</p> <p>(4) Hulten, Eric. <i>Flora of Alaska and Yukon</i>. Stockholm, Sweden: State Museum of Natural History, Botanical Dept., 1946. Print.</p> <p>(5) Tsuda, et al. . "Radical Scavenger Effect of <i>Boschniakia rossica</i>." <i>Journal of Ethnopharmacology</i>. 41.1-2 (1994): 85-90. Web. 10 May. 2012.</p> <p>Plants.usda.gov, United States Department of Agriculture. Natural Resources Conservation Service. Accessed on 5/9/12</p>
Other Sources Consulted (but that contained no pertinent information) (full citations):	<p><a href="http://www.ars-grin.gov/cgi-bin/npgs/html/taxon.pl?424989">http://www.ars-grin.gov/cgi-bin/npgs/html/taxon.pl?424989</a></p> <p>Hitchcock, Conquist, Ownbey, and Thompson. <i>Vascular Plants of the Pacific Northwest</i>. Seattle: University of Washington Press, 1969.</p> <p>eFloras.org, Chinese Plant Names, Flora of China. Available at <a href="http://efloras.org/florataxon.aspx?flora_id=3&amp;taxon_id=200021452">http://efloras.org/florataxon.aspx?flora_id=3&amp;taxon_id=200021452</a>. Accessed on 5/9/12</p>
Protocol Author (First and last name):	Amber Corfman
Date Protocol Created or Updated (MM/DD/YY):	05/16/12

Note: This template was modified by J.D. Bakker from that available at: <http://www.nativeplantnetwork.org/network/SampleBlankForm.asp>