

# Phases and Processes in the ISM

Bruce G. Elmegreen  
IBM Research Division  
Cambridge, July 13, 2005

M51

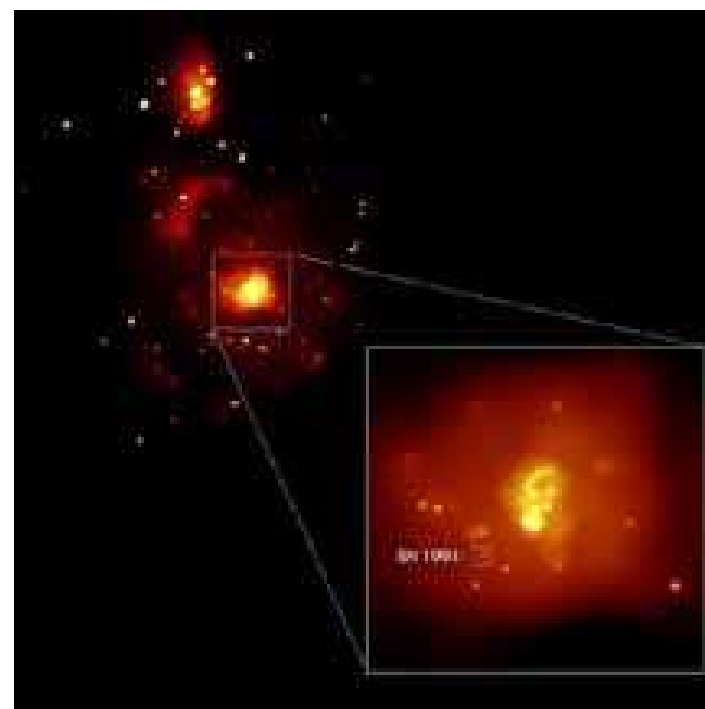


HST



Spitzer

Chandra

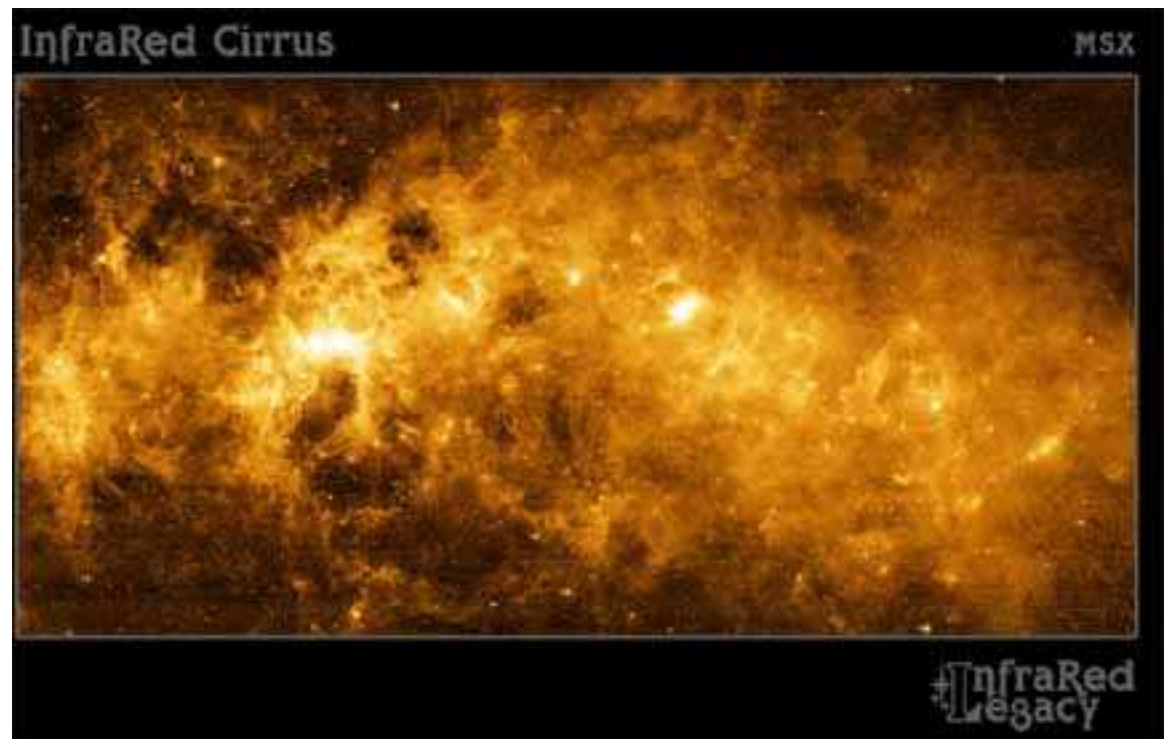


# Overview

- Phases: temperatures, densities, pressures
- Structures: clouds, shells, filaments, fractals
- Origins: instabilities, explosions, density waves, turbulence
- Star formation follows dense cloud formation
- Great Observatories: close-up views



IC 1396 Spitzer



In the thermal 60's, our understanding of heating and cooling processes for the atomic ISM led to the concept of ISM "phases."

&

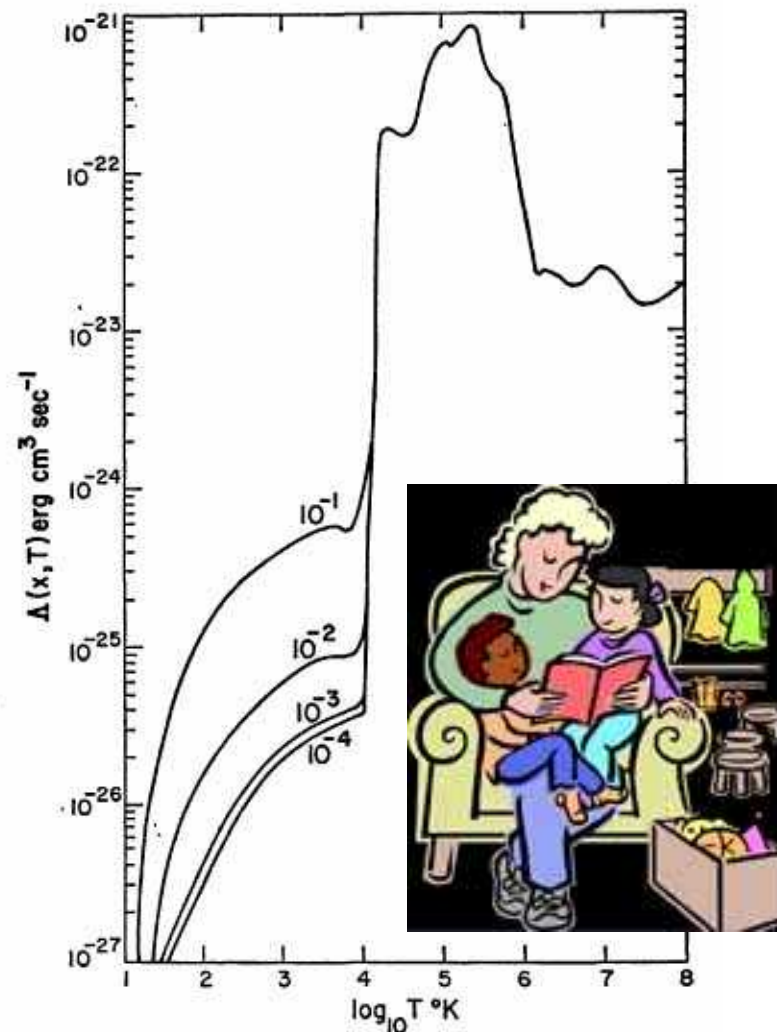
Optical and HI observations of absorption and emission led to the concept of "clouds."

THEN,

In the explosive 70's, a hot phase was added after the prevalence of supernova was appreciated.

&

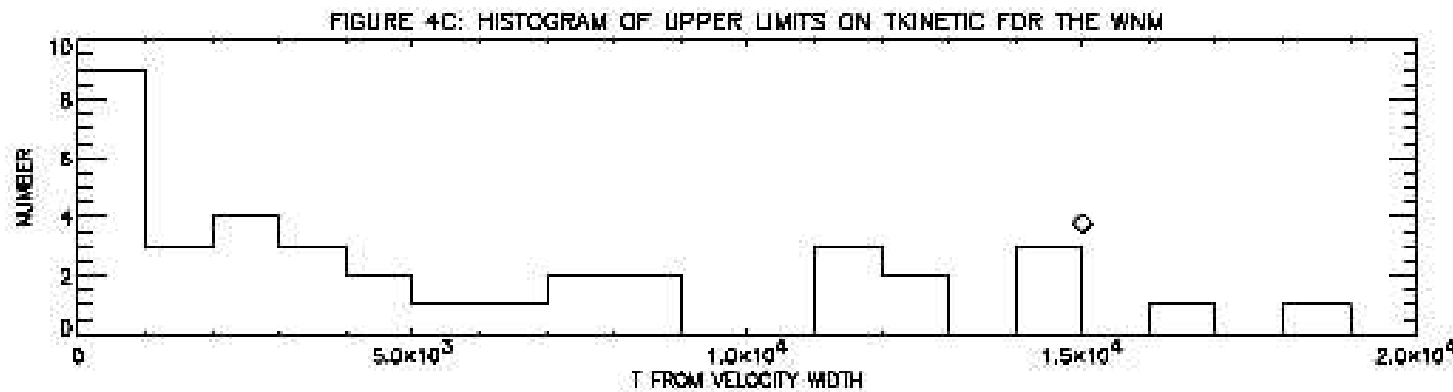
A molecular phase was also added in the 70's after Penzias & Wilson's discovery of mm-wave line emission.



Dalgarno & McCray '72

## Heiles' 5 phases (2000, 4<sup>th</sup> Tetons conference)

- Hot ionized medium:  $T \sim 10^7 \text{K}$ ,  $P/k > 20000$ ,  $n \sim 0.003$ ,  $f \sim 0.5$ , shock-heated
- Reynolds' warm ionized medium:  $T \sim 8000 \text{K}$ ,  $P/k > 3400$ ,  $n \sim 0.08$ ,  $f \sim 0.1$ , from OB stars
- Warm neutral med.:  $T \sim 500\text{-}8000 \text{K}$ ,  $P/k \sim 200\text{-}4000$ ,  $n \sim 0.1\text{-}0.4$ ,  $f \sim 0.5$ ; multiple sources
- McKee-Ostriker warm ionized medium:  $T, P, n, f$  same; multiple heat sources
- Cold neutral medium:  $T \sim 10\text{-}75 \text{K}$ ,  $P/k \sim 1500\text{-}10000$ ,  $n \sim 20\text{-}250$ ,  $f \sim 0.01$ , C ionization
- (plus cold, molecular & self-gravitating:  $T \sim 10\text{-}25 \text{K}$ ,  $P/k \sim 10^5\text{-}10^6$ ,  $n > 10^3$ ,  $f \sim 0.01$ )



A high fraction of the WNM is at a temperature that should be thermally unstable.

## Phases and Pressure Variations in a Turbulent ISM

- P variations: high in some regions – (Oey & Garcia-Segura 04 from superbubble growth; Jenkins & Tripp 01 from CI fine-structure)
- Halo flows regulate midplane P, so filling factor  $\alpha_{\text{hot}} \sim \text{SNR}^{0.363}$  and is generally small (17% for galactic SNR) – deAvezil & Breitschwerdt '04

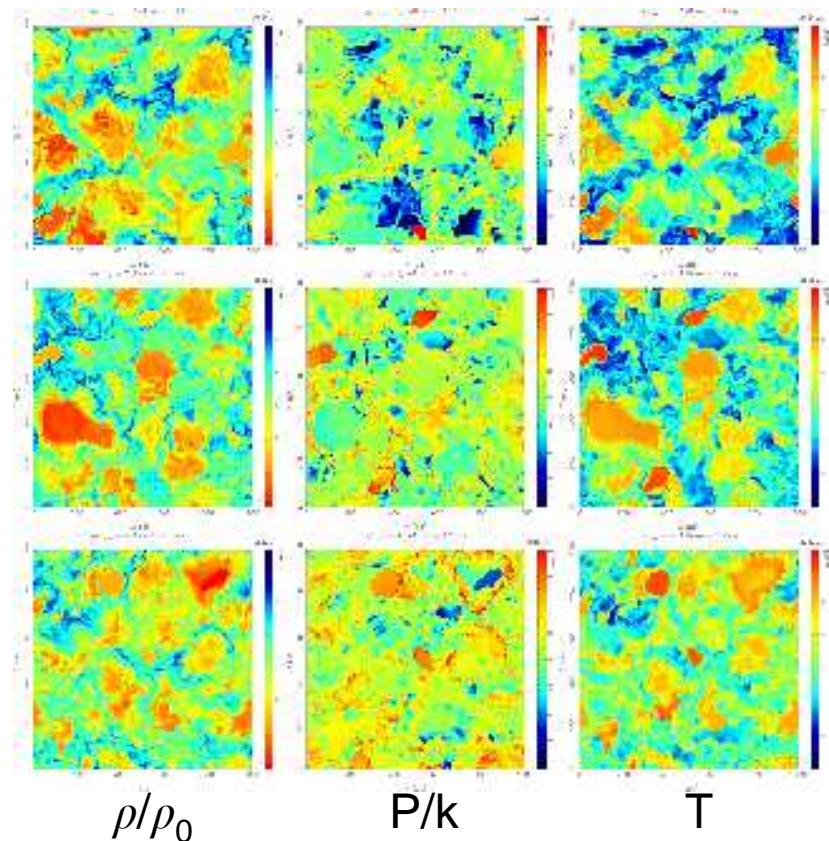
1 kpc<sup>2</sup> in galactic plane

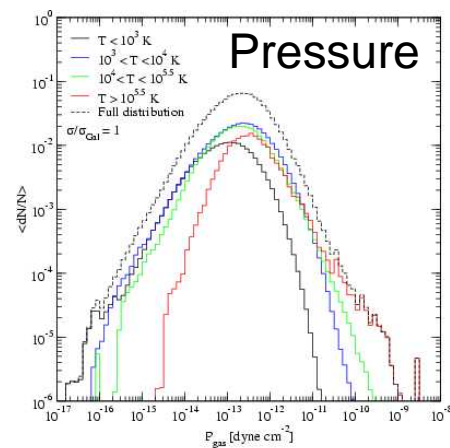
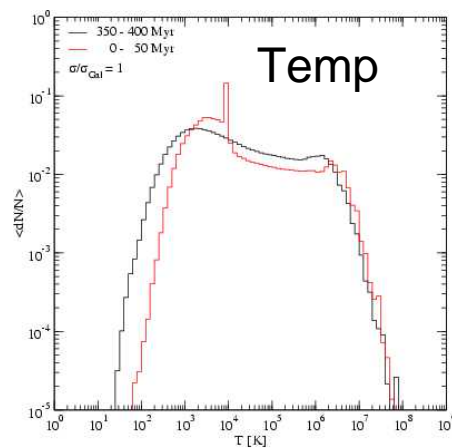
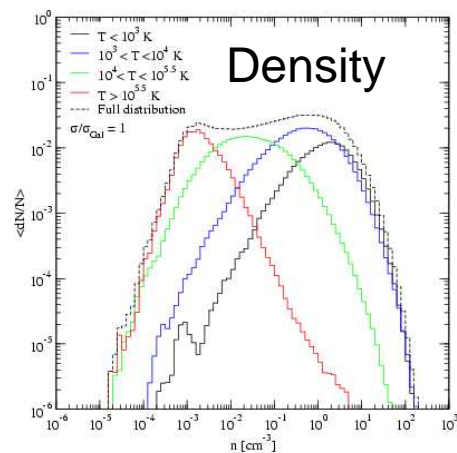
includes starlight heating  
which makes  $T \sim 3000\text{K}$  bistable,  
but not magnetic field

SNR~MW

SNR~2MW

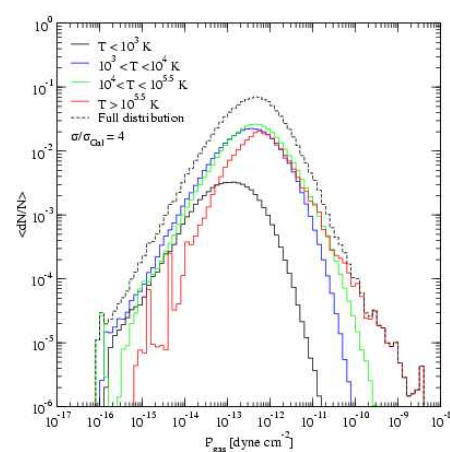
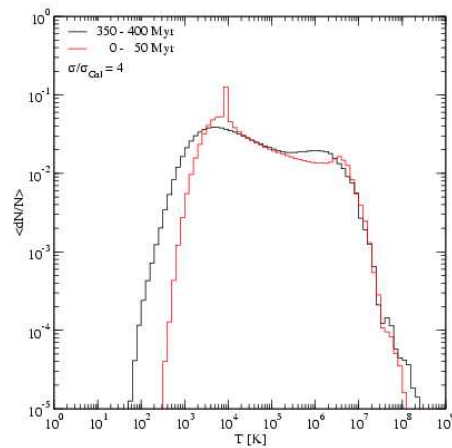
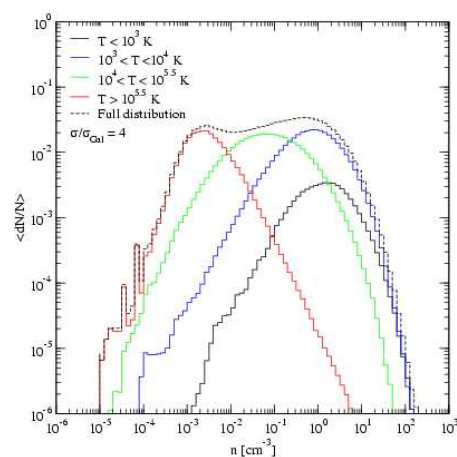
SNR~4MW



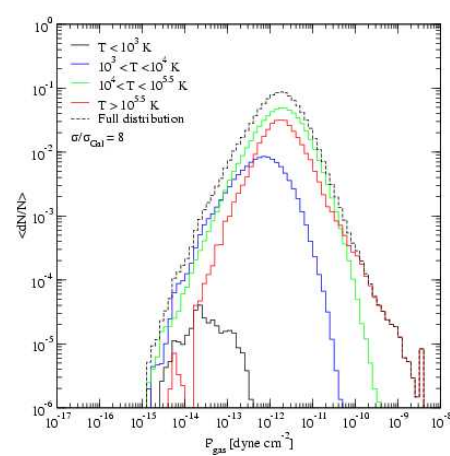
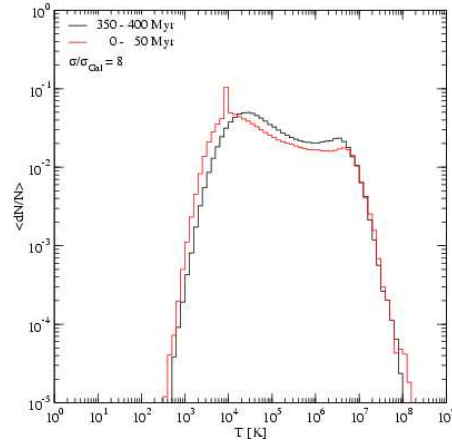
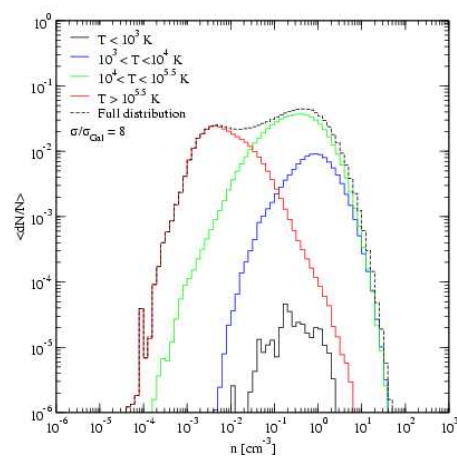


SNR ~ MW

deAvillez &  
Breitschwerdt '04



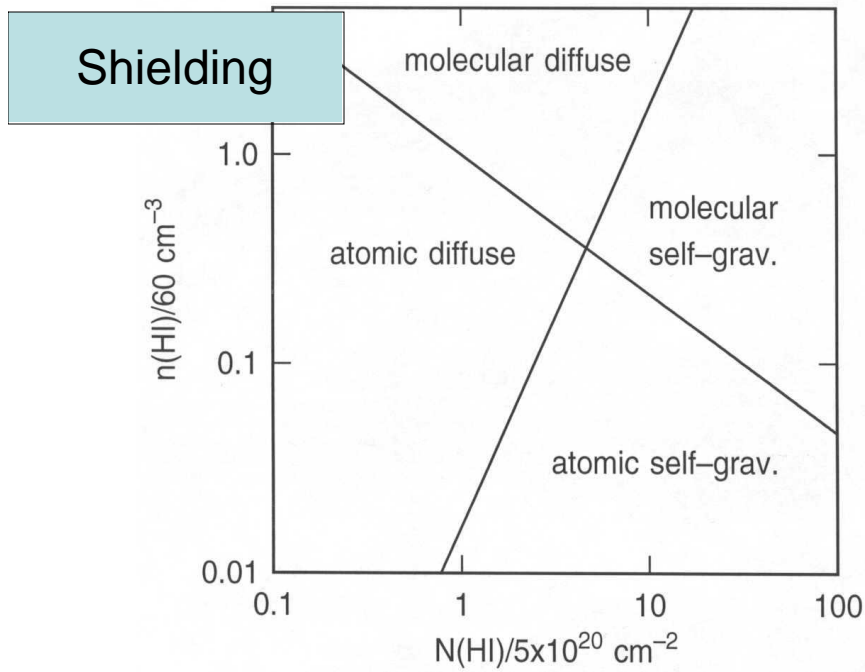
SNR ~ 2MW



SNR ~ 4MW

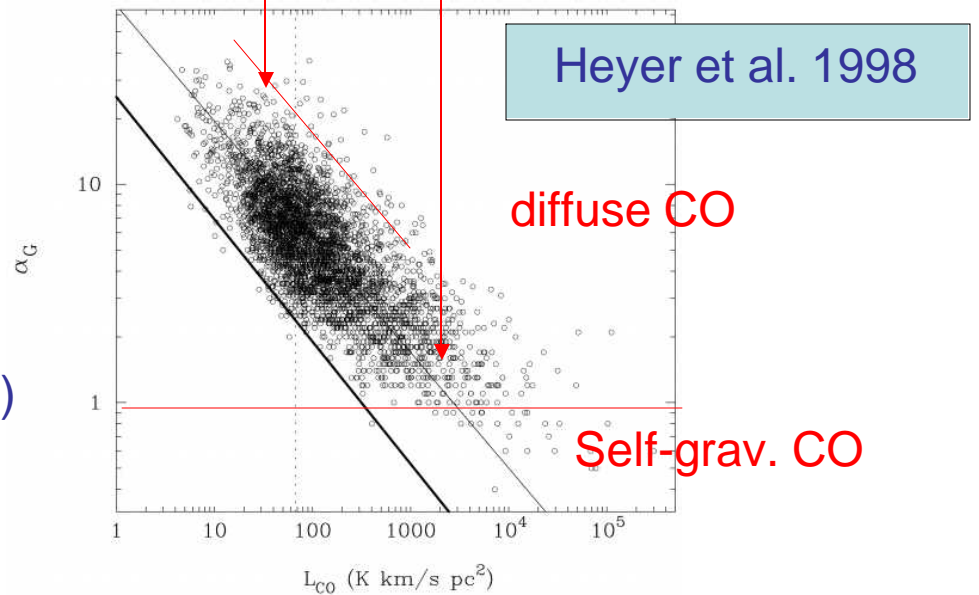
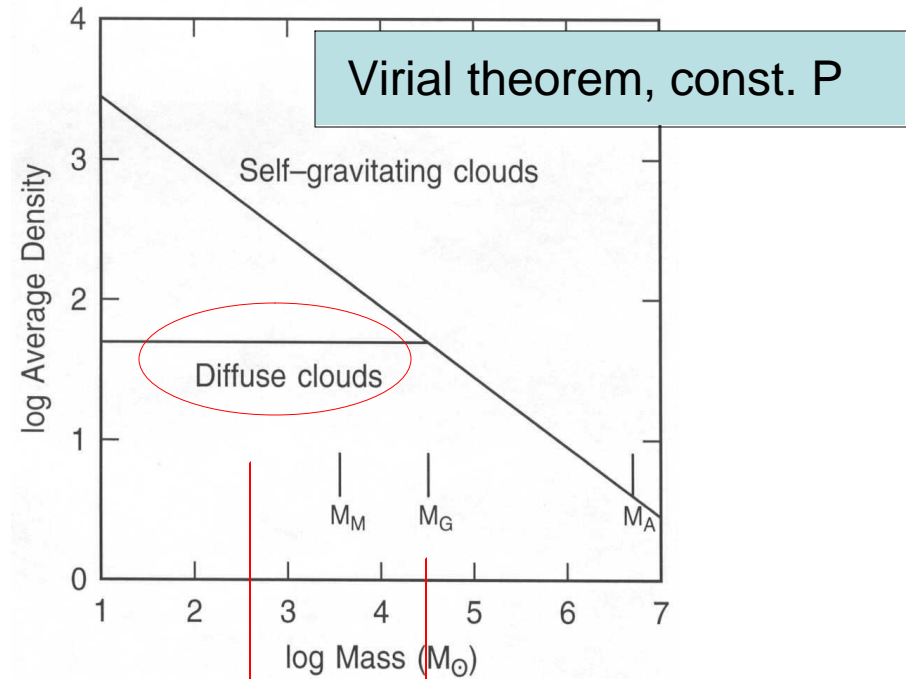
No bistable T  
– see also  
Gazol et al 01

# Molecular phases: Shielding, Self-gravity



Elmegreen 1995 7th  
Guo Shoujing School

- atomic diffuse (low  $n$ , low  $N$ )
- molecular diffuse (high  $n$ , low  $N$ )
- atomic self-gravitating (high  $N$ , high  $M$ )
- molecular self-gravitating (high  $N$ )



# Radial profiles in galaxies

- CO/HI decreases with distance (e.g. Heyer et al. '04, Blitz et al. '04 for M33; ... Sofue et al '95)
  - lower P and Z make proportionally less diffuse molecular gas
- Thermal temp of cool diffuse HI gas increases slightly with distance (Braun '95, '97).
  - lower Z decreases coolants
- Fraction of HI in cool diffuse phase decreases with distance (Dickey et al. 1990; Braun '97)
  - low P, coolants favors warm equilibrium phase of HI
- Extragalactic ionization cuts off outer HI disk at  $N \sim 10^{19.5} \text{ cm}^{-2}$  (Maloney 93, Corbelli & Slapeter 94, Dove & Shull 94)
- Filling factor of hot gas increases with z
  - fountains, superwinds, greater scale height of hot gas
- Turbulent velocity dispersion decreases with distance (Boulanger & Viallefond 1992).



How do these generalities hold up under detailed inspection using HST, Spitzer, and Chandra?



M51, Spitzer  
3.6, 4.5, 5.8, 8.0  $\mu$ m



M51, HST



M51, HST: central disk

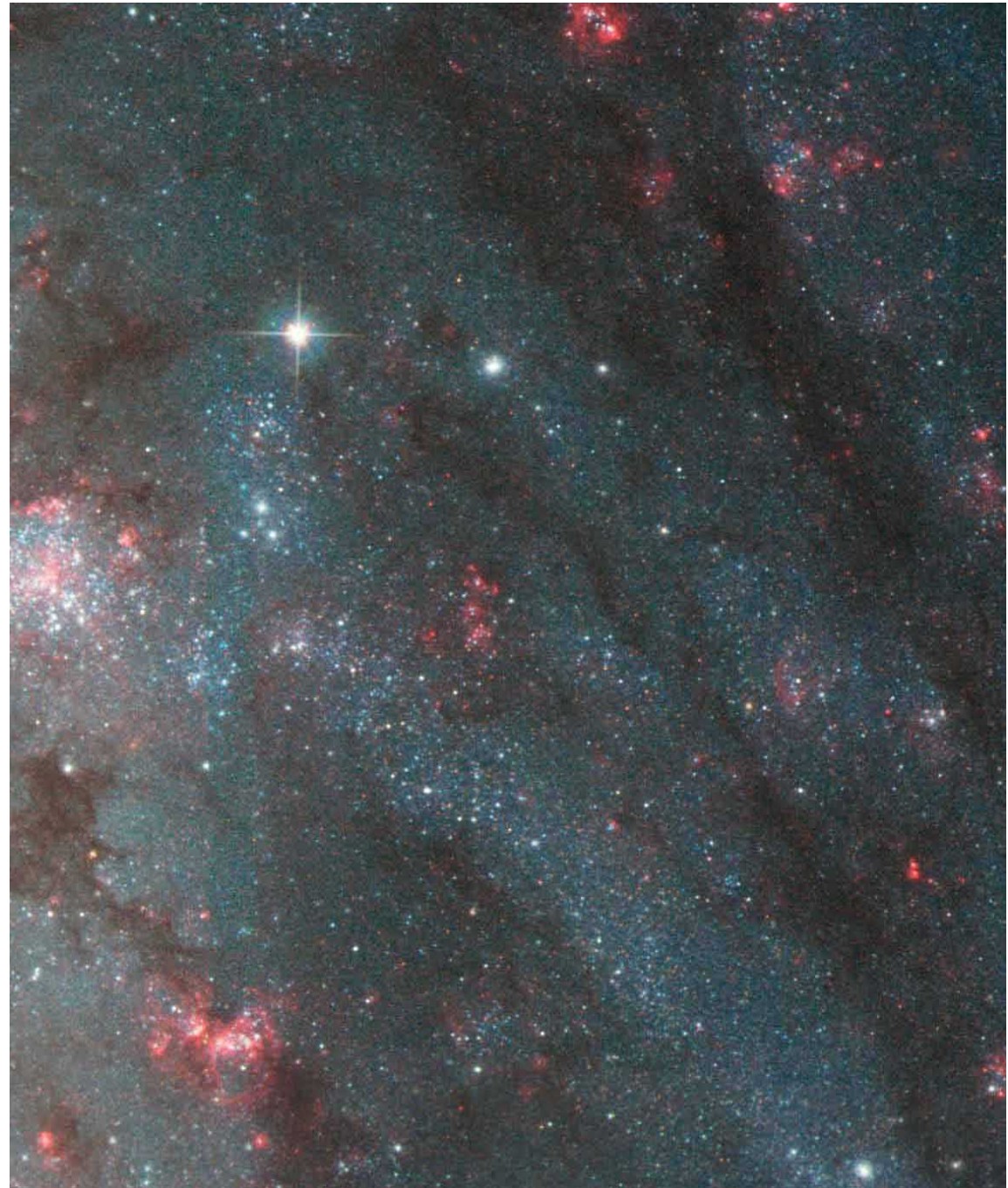
high shear, tidal forces,  
sub-threshold N,  
strong radiation field,  
what makes holes?

ambient radiation pressure?  
stellar winds? turbulence?



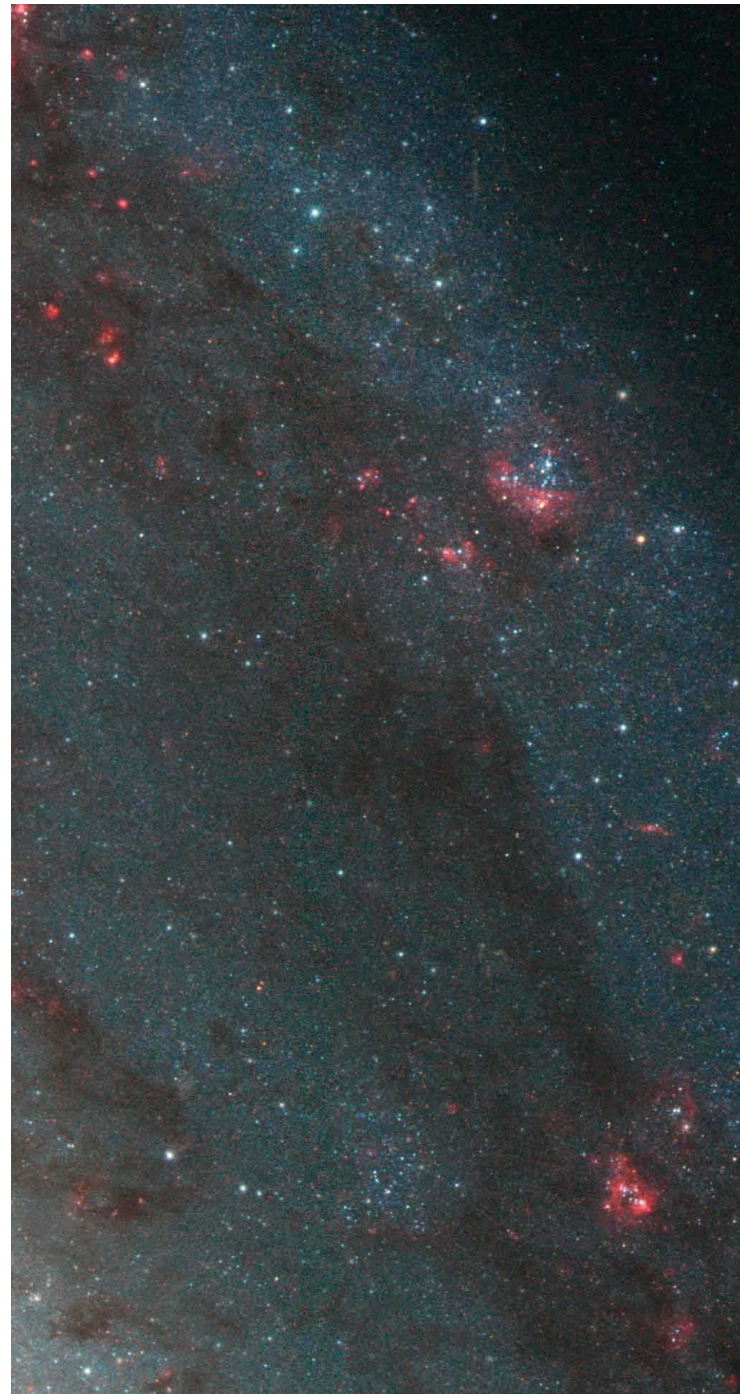


M51, HST  
western  
spur





M51, HST  
western  
outer arm



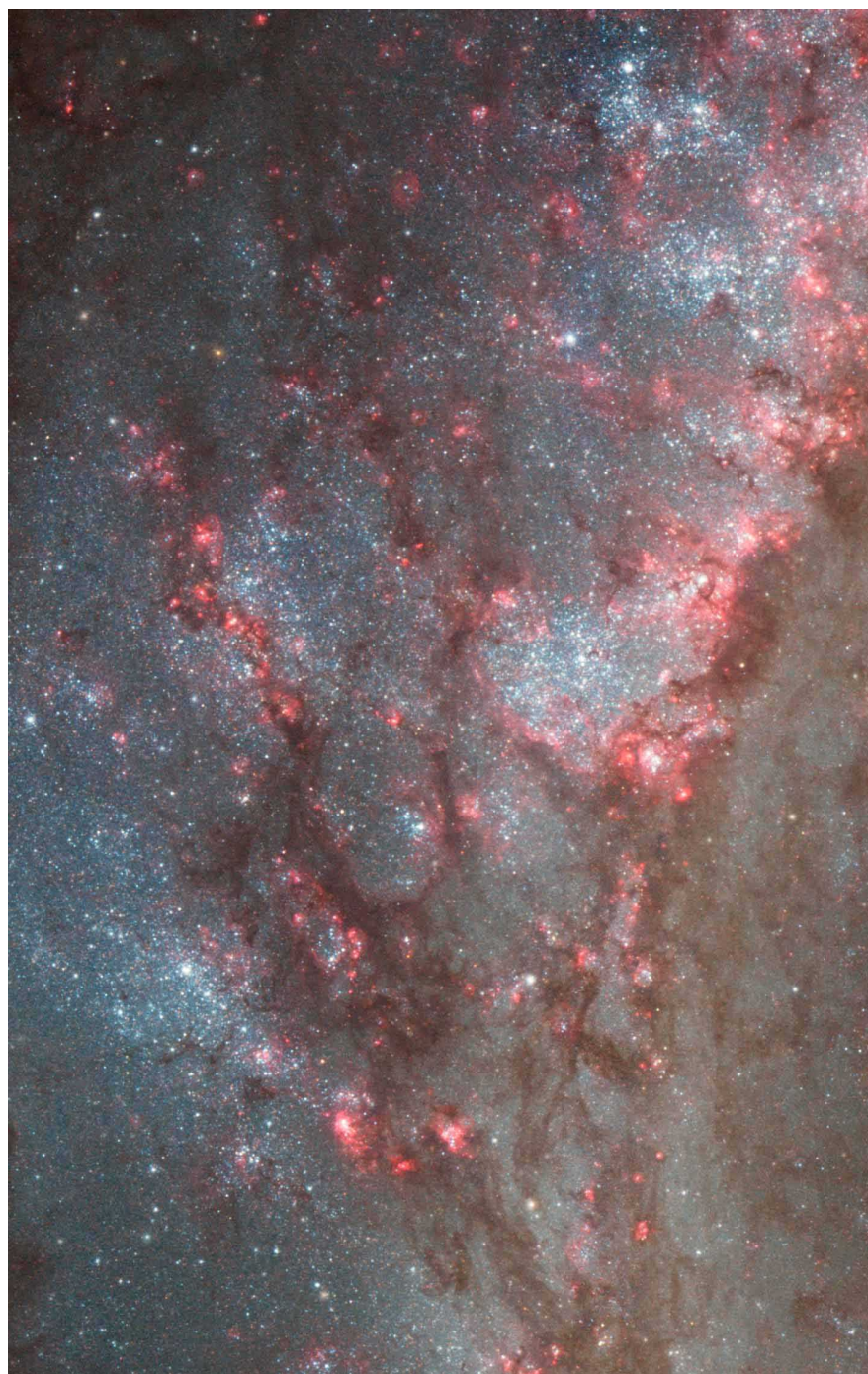


M51, HST  
southern  
middle arm





M51, HST  
eastern  
spur





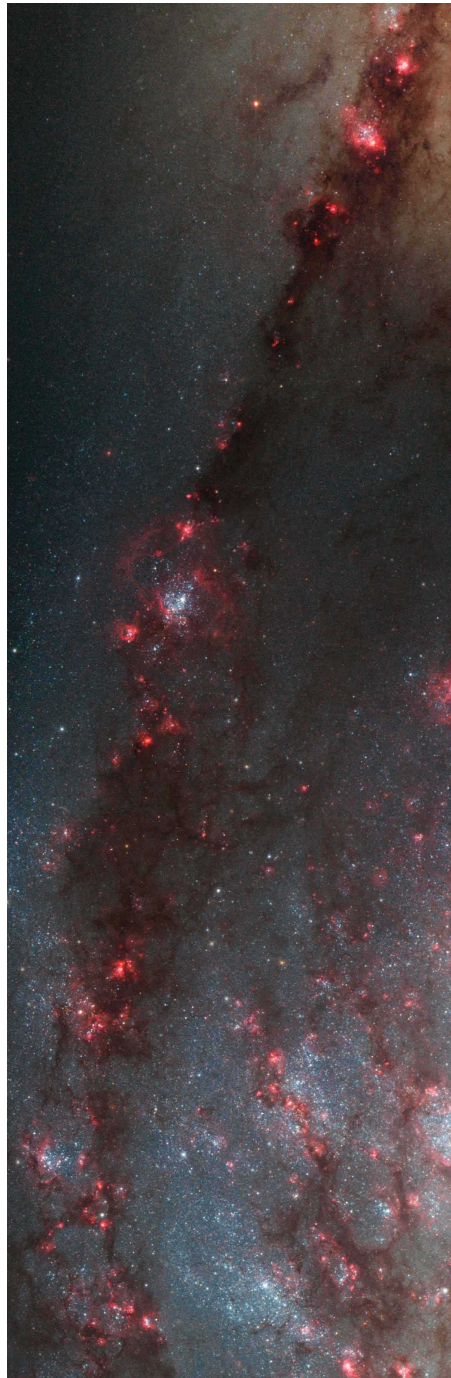
M51, HST  
northern  
middle arm



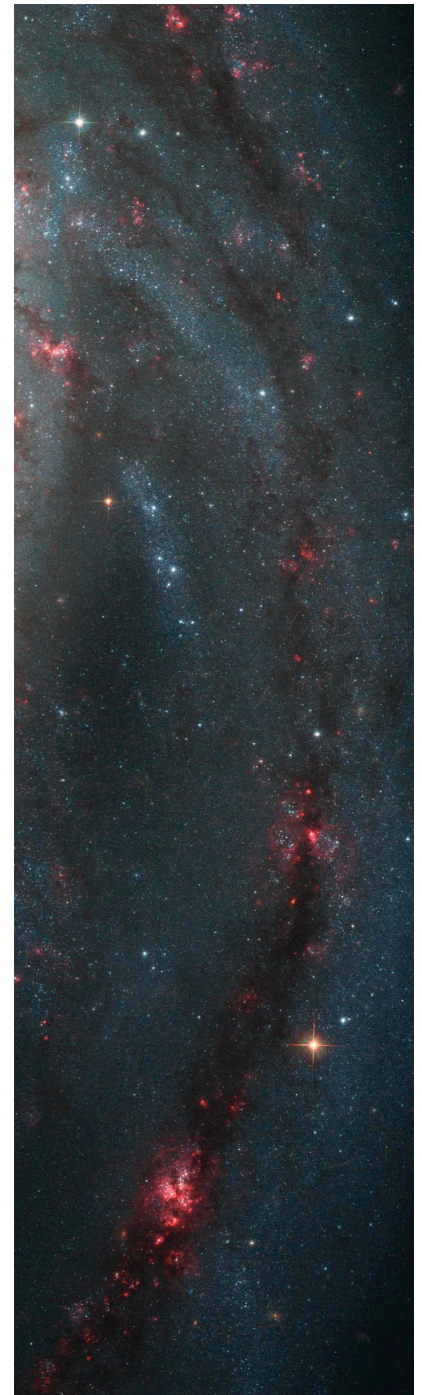


M51, HST  
tidal arms

N

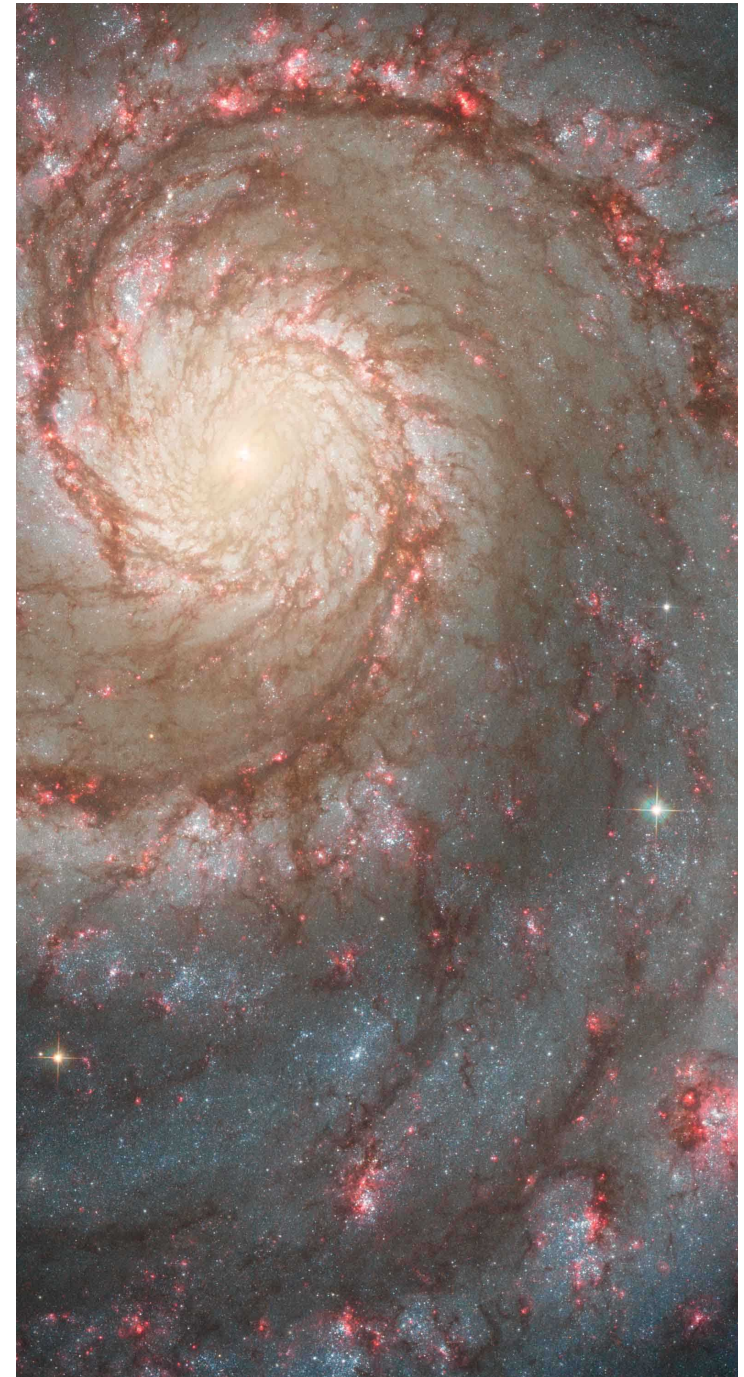


S



## Arm to arm sequence:

1. dust lane formation
2. dust lane collapse
3. downstream feathering
4. cloudy debris
5. shell formation
6. diffuse clouds



Dark clouds in HST are  
emission regions at IR

M51, Spitzer  
Legacy  
3.6, 4.5, 5.8, 8.0 microns





Lingering SF  
or triggering  
in debris fields



## Spiral Galaxy NGC 3370



Gas rich galaxies have more  
interarm debris and star formation

Hubble  
Heritage

## Spiral Galaxy NGC 4414

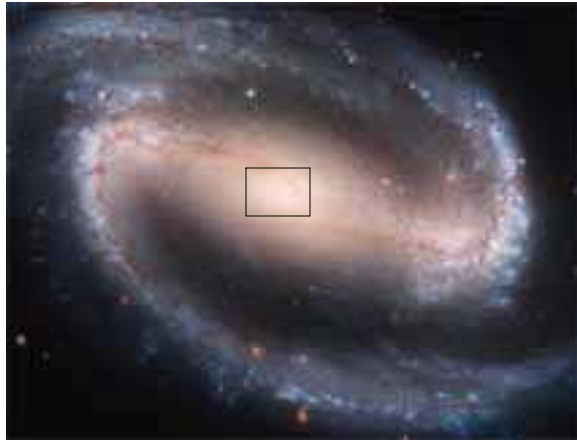
Galaxies without  
2 arm spirals usually  
have low disk/halo  
mass ratios

Hubble  
Heritage

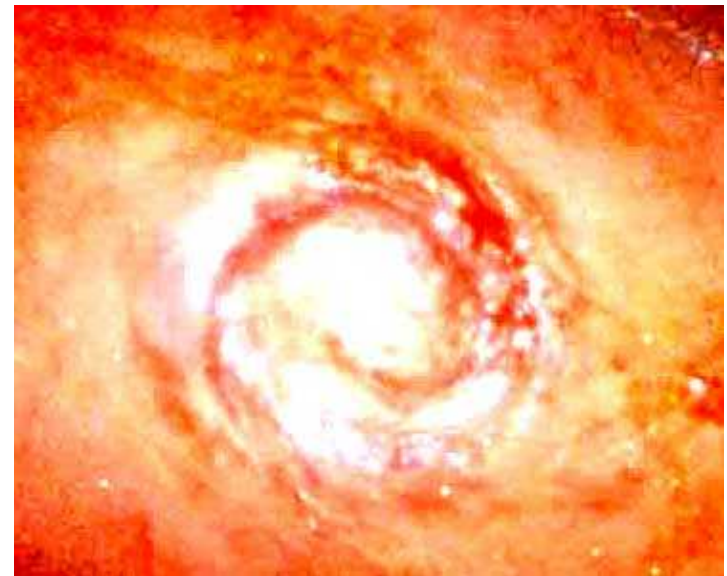
## Barred Spiral Galaxy NGC 1300



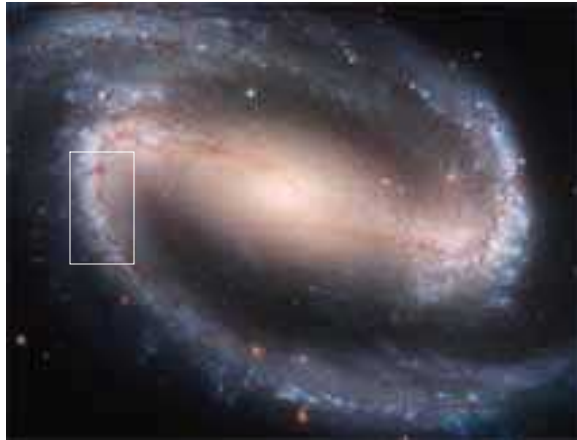
Bar dynamics  
affects cloud and  
star formation



NGC 1300  
center ring at bar resonance

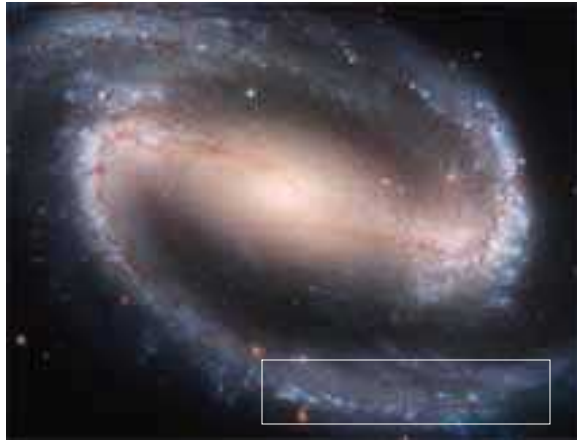






Dust lane much more open.  
Gas density lower.  
Little feathering.





N1300 outside corotation.





NGC 1300 inner dust lanes diffuse because of shear and tidal forces



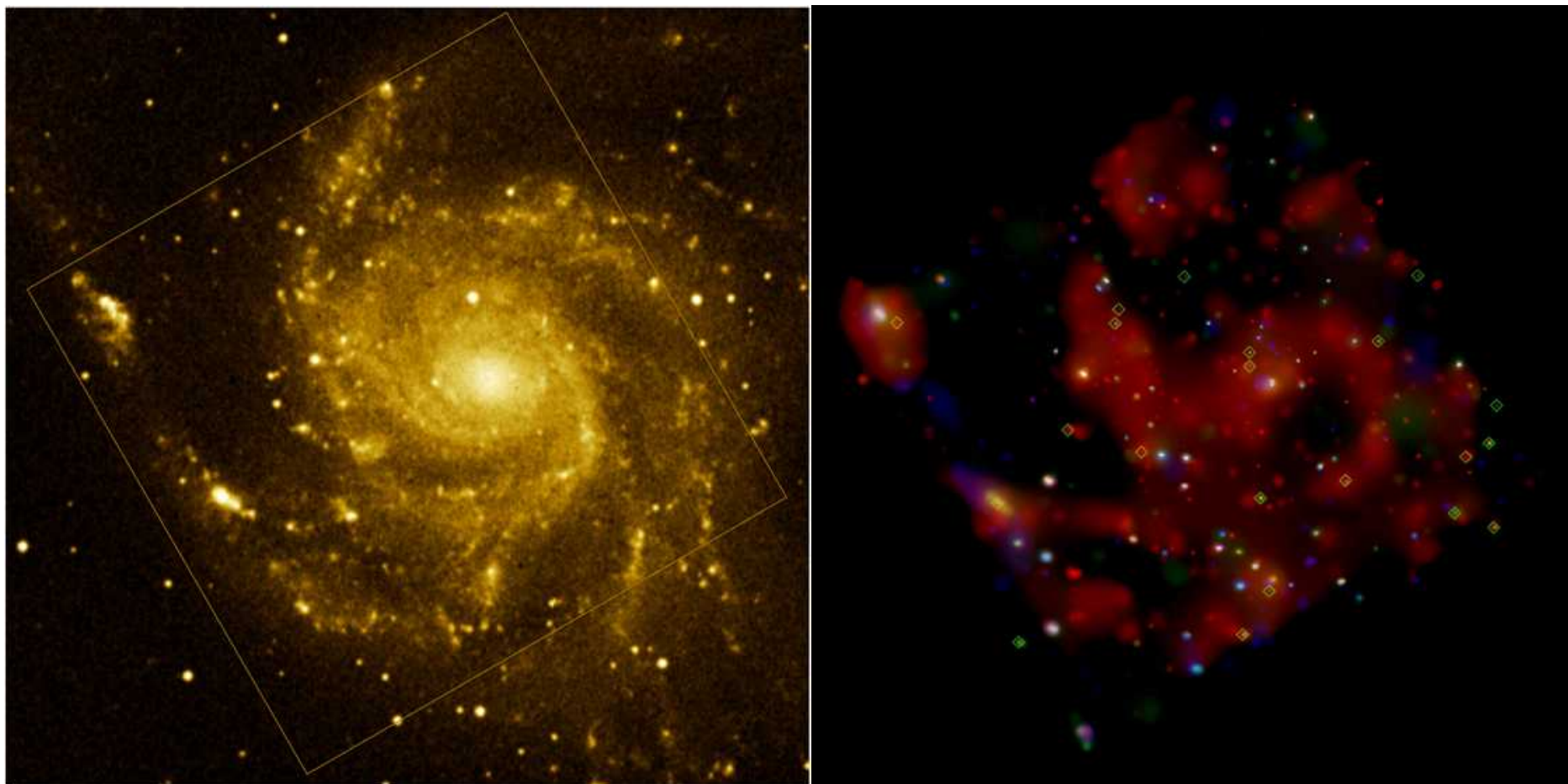


Enhanced SF at end of bar.

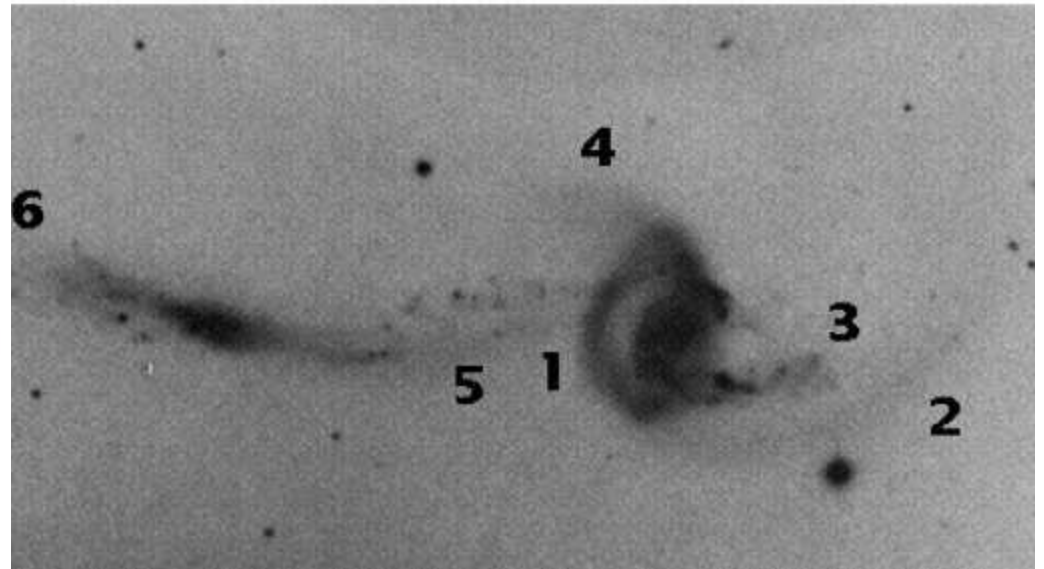
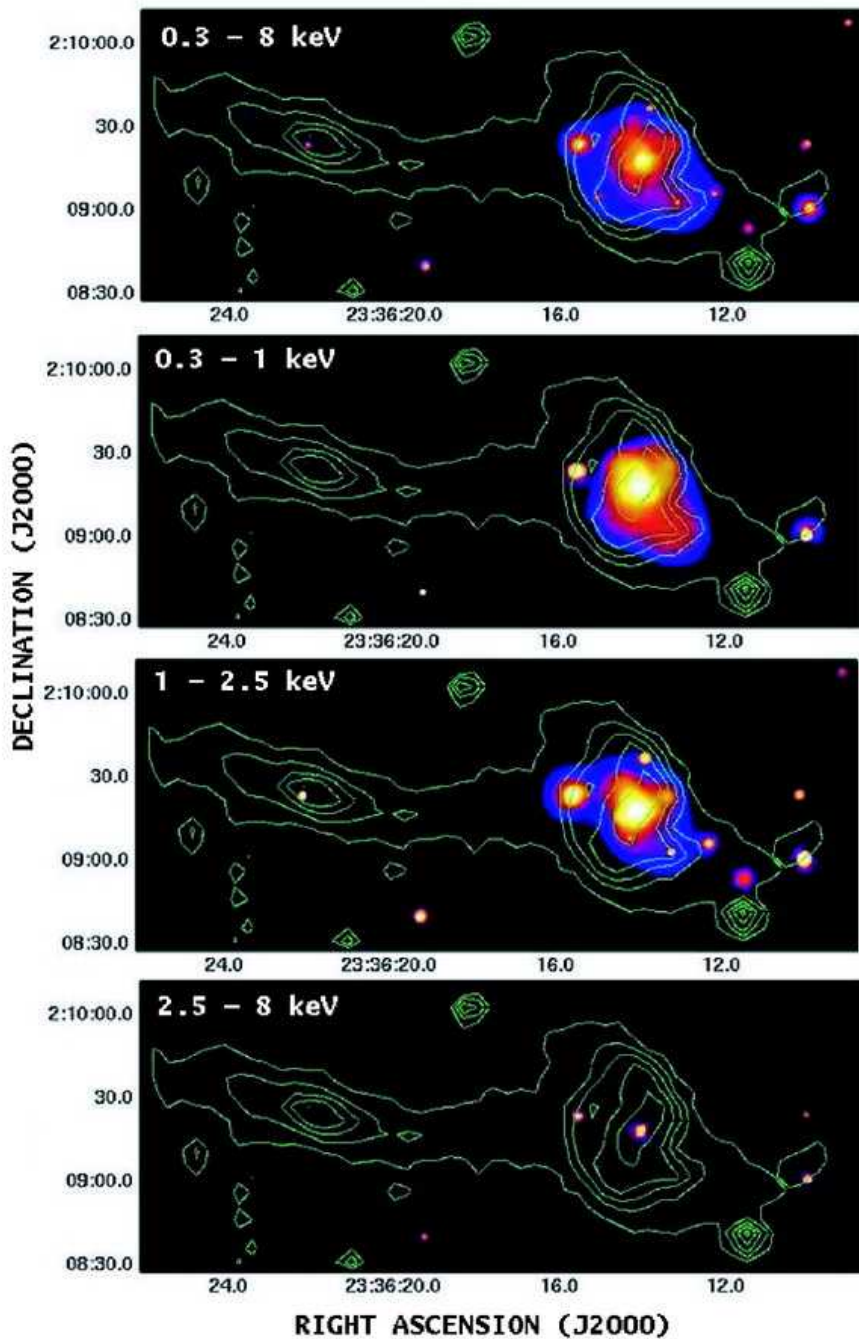
crowding effect?

co-rotation effect?





M101: optical and Chandra  
x-ray is patchy, follows star formation

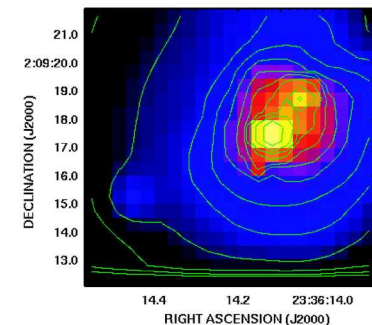


## X-ray emission from nuclear region of interacting galaxy NGC 7714

- SNR possible energy source
- superwind evident
- 2<sup>nd</sup> pt source in nucleus ~ SSC

(Smith, Struck & Nowak 05)

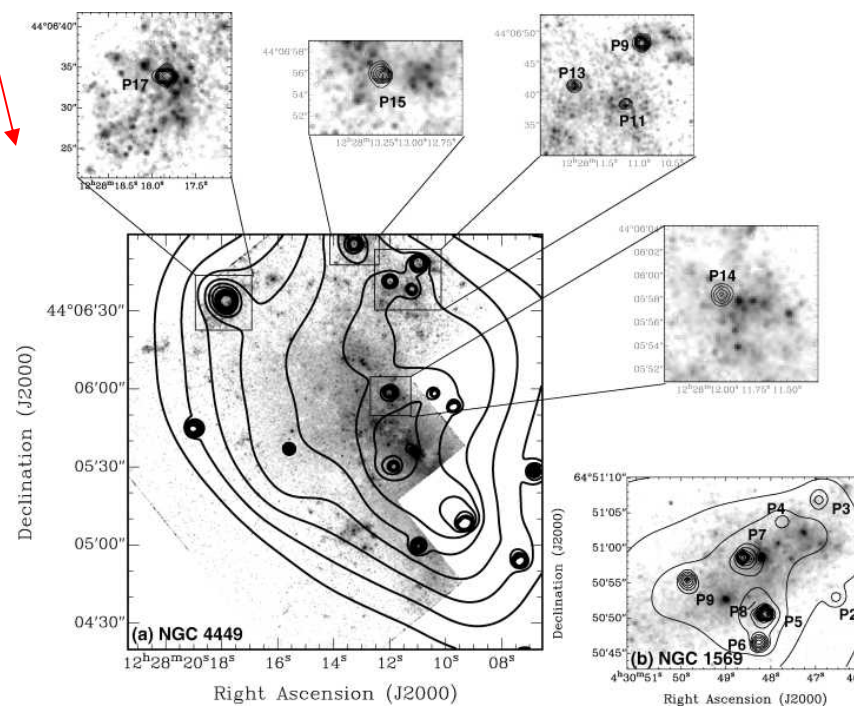
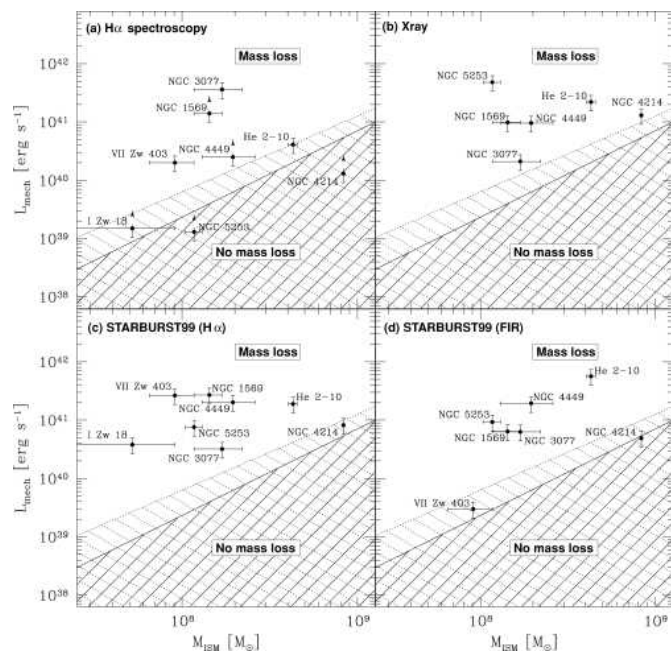
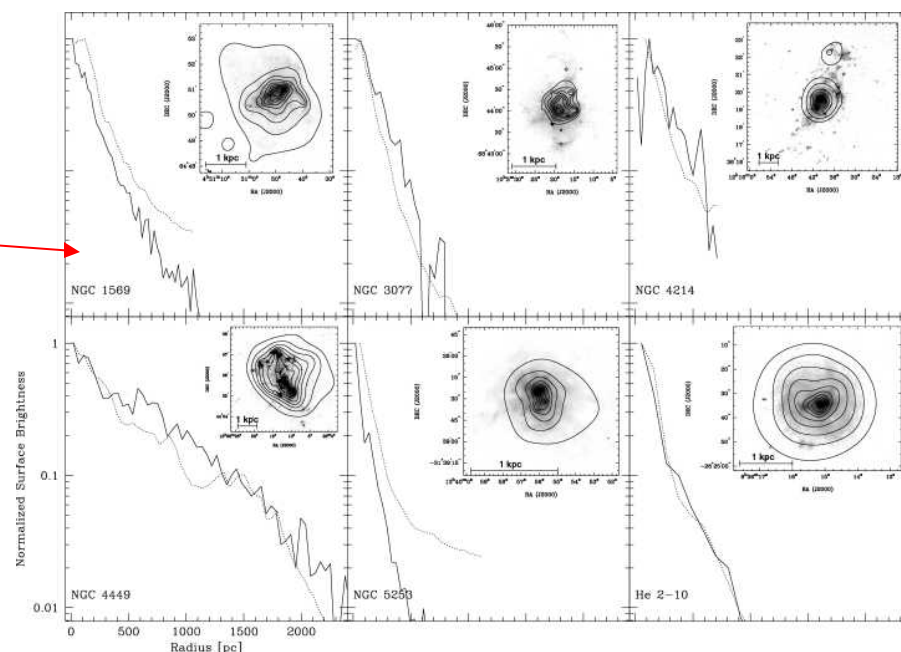
CHANDRA images



A study of XR and SF in 6 dwarf galaxies (Ott, Walter, Brinks 05) shows a correlation between them

SF regions also contain XR point sources in proportion to the SFR

The XR emission suggests a superwind



# Conclusions

- ISM “phase” depends on thermal heating and cooling
  - starlight, atomic/molecular processes, grains, shocks, cosmic rays, ...
- ISM “structure” depends on its motion, which is generated by different energy sources than its “phase”
  - supernovae, self-gravity, ionization, turbulence, spiral arms, ...
- ISM structure varies within a galaxy and from galaxy to galaxy
  - SDW-dominated galaxies produce lots of spiral filaments and timed evolution of young stars (SDW triggering, dispersal, debris triggering...)
  - Barred galaxies produce end-of-bar enhancements, inner rings, corotation stagnation zones, stable bar dust lanes etc.
  - $P, n, N, Z, G_{UV}, B, \dots, K$  ... variations determine ease of conversion of ISM gas from diffuse to self-gravitating to stars.
  - above the Toomre/Kennicutt threshold, SF is easy, unavoidable, and as fast as possible, i.e., always at the dynamical rate  $\rightarrow$  Schmidt  $n^{1.5}$  law.
- Great Observatories see structure (HST), thermal states and embedded stars (*Spitzer*), hot gas and hot energy sources (*Chandra*)