



LexisNexis® Early Data Analyzer and LAW PreDiscovery®

It's easier to be 100% certain about a case when you've eliminated 80% of the irrelevant data.

Keep eDiscovery costs down and increase your efficiency with our seamless integration

First, use **LexisNexis® Early Data Analyzer** for processing, to capture your document set where it resides and cut it down to size. This can eliminate as much as 80% of non-relevant data, meaning it's possible to learn more about a case early on, and identify whether it's worth pursuing or not.

Next, save your data directly to **LAW PreDiscovery®**, and take advantage of this powerful eDiscovery production tool. Generate TIFF images, number, endorse, and create full productions in dozens of formats.

LexisNexis Early Data Analyzer goes to work right where your data resides—on your network drive or an external drive—to help you improve early case assessment, determine the responsive data necessary for your case and validate your strategy.

Since Early Data Analyzer filters, indexes, searches, culls and pre-processes your data in its source location, you benefit from a speed of 5 – 10 GB per hour, per processing core. That's six times faster than using LAW PreDiscovery alone! In addition, you can make your electronic discovery more defensible by maintaining a log of every action taken by each authorized user.

New features in Early Data Analyzer

- **Export directly into LAW PreDiscovery**, avoiding additional reprocessing or export/import steps.
- **New OCR filtering options, plus the ability to OCR by custodian or import sessions.**
- **New File Support, including Lotus Notes 9.**

LAW PreDiscovery works sequentially with Early Data Analyzer, as the production engine to bring in all of the potential Evidentiary documents – both paper and electronic – gathered throughout discovery. LAW PreDiscovery allows distributed processing for conversion of documents to TIFF/PDF images, application of custom endorsement or Bates numbers, watermarking, image quality correction, and more. You can also export data directly to Concordance® discovery management software for seamless review.

New features in LAW PreDiscovery

- **Streamlined software licensing.** View, manage, and deactivate/refresh software licenses from the License Manager interface.
- **Deduplicate Non-Message Email Items.** Eliminate duplicate Calendar items, Tasks, Contacts and Journals from your case dataset.
- **Improved OCR Reliability.** OCR content is now stored in a format similar to native and extracted text, eliminating issues with long or malformed file-paths.
- **Placeholder Synchronization.** Use the same placeholder for emails, loose documents and attachments to speed up the process of setting data correctly.
- **Import Case Subset.** You can take a group of documents from one or more cases by tag and import them into a different case.

An Integrated approach: Here's how the two programs work together.

Start with LexisNexis Early Data Analyzer

First, select the source data that needs to be analyzed. It can come from a staging area for processing electronic discovery. At this point, your data stays in its source location.

Step 1: Perform inventory analysis

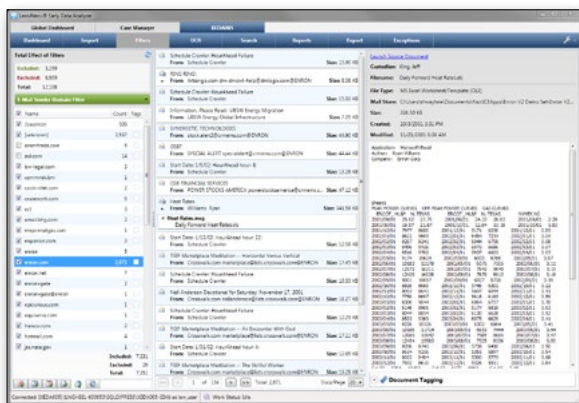
Identify file types that need to be processed. File types that we do support are mail stores, word processing documents, loose e-docs/emails, Lotus Notes 9 and forensic images, as well as Apple iWorks and various other Apple file types. Once the inventory is created, we then can take a look at what needs to be filtered out to save overhead and time for review. Filtering helps you filtering on only the most relevant documents are chosen for the final data set.

Some common filters supported, include:

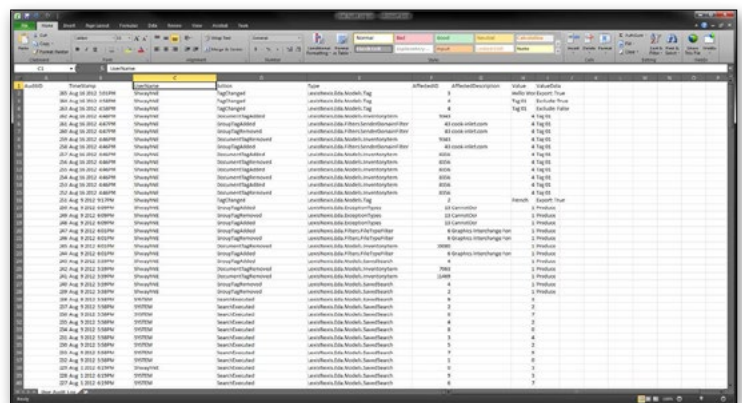
- Duplicates
- NIST files
- Languages
- Sender domains
- Date ranges

Step 2: Filter, index and search

Once your inventory and filtering is completed, you can start searching and tagging on your filtered set. Search through the full-text data for content in a documents.



Early Data Analyzer filters content to help you select only the most relevant documents for your data set. This image shows filtering by email sender domain.



This action log—tracking every action taken by each authorized user—is just one example of real-time, visual analytics available with Early Data Analyzer.

Then move to LAW PreDiscovery

Step 3: Bring in documents from Early Data Analyzer and any other resources. Easily load your reduced document set from Early Data Analyzer to achieve native and full-text extraction in LAW PreDiscovery. Take a group of documents from one or more cases (by tag) and import them into a different case. Today's import process enables you to easily extract individual files from archives and process embedded mail stores (.pst files).

If you need to bring in additional documents, LAW PreDiscovery supports virtually any scanner and more than 4,000 native file types. And now, an optimized scan toolbar enables you to save profiles that speed the scanning of mixed document types.

Step 4: Search, filter and tag

For even more controlled document processing, LAW PreDiscovery makes it simple to search, filter and tag files. Enhanced filtering capabilities allow for faster, more effective searching and culling. Then use the same placeholder for emails, loose documents and attachments to speed up the process of setting data correctly.

Step 5: Perform batch processing and production

Within LAW PreDiscovery, you can choose from a variety of production options. Based on licensing, your choices may include TIFF/PDF conversion, paper production, Bates numbering, endorsing, and generating files to load into review tools, such as Concordance discovery management software.



Pre-reviewing and culling non-responsive eDiscovery and scanned documents with LAW PreDiscovery helps you eliminate unnecessary costs and save valuable time.

Gain insight faster, and experience a more efficient eDiscovery.

For more information, call [800-722-3288](tel:800-722-3288) or go to www.lexisnexis.com/early-data-analyzer.

