

BLOOMS

BULBS

1965

There are many non-daffodil plants offered in this catalog, both bulbs and plants. However, only those pages relating to daffodils have been scanned for inclusion here.

ESTABLISHED 1870

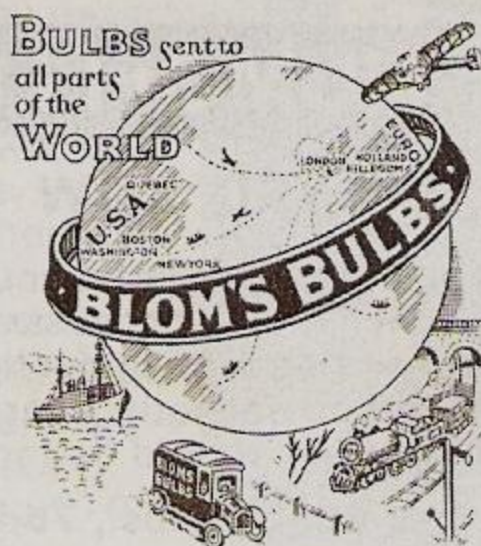
WALTER BLOM & SON LTD.

of Holland

BULB GROWERS, SEEDSMEN AND NURSERYMEN

HEAD OFFICE & STORES
LEAVESDEN, WATFORD
HERTS.
TELEPHONE & TELEGRAMS
GARSTON (HERTS.) 2071

TRIAL GROUNDS
SUNNINGHILL PARK GARDENS
SUNNINGHILL
TELEPHONE ASCOT 856



BRANCH
PRINCES HIGHWAY
HARRISFIELD
MELBOURNE, AUSTRALIA

NURSERIES
HILLEGOM, HOLLAND
TELEPHONE 5708 and 6236
JULIANADORP, HOLLAND
HAARLEM, HOLLAND

Leavesden · WATFORD · Hertfordshire

Among all the flowers we grow throughout the year are there any more welcome or grown more generously than those produced at Christmas?

A very pleasant half hour may be spent exploring this catalogue and you will be surprised at the range of colours you can choose from to fit the pattern of your midwinter decorations.

At this early season the spring colours of Hyacinths, Tulips and Daffodils are available because of Blom's time honoured method of advancing their growth, while in storage, to a perfection which has almost eliminated all failures. There is abundant evidence that Blom's Christmas flowering bulbs show their own characteristics, they come easy in a moderate temperature, they produce brightly coloured flowers equal to the best grown outside in the garden and last long on the plant, in fact they yield a full harvest.

There is however a point which we would like to emphasize, namely the value of light and the temperature when the bulbs have been taken out of the dark. Each plant is best developed and each function performed by it is carried out at a certain temperature and is checked by excess or defect. There is a point in the temperature barely sufficient to induce growth, with increasing heat there is corresponding increase in development until a degree is reached when best growth is made, beyond this point growth may be quicker but weak and lacking in stability. Explicit directions are given for each section and sub section in this catalogue and in addition you receive a leaflet with the bulbs stating all particulars.

Careful and thoughtful watering is very important, the more water there is in the soil the less air it can contain; nearly all plants require air at the roots as well as water and if the soil is kept in a state of saturation air is excluded and consequently the soil becomes sour, the beneficial effect of mixing porous substances such as peat, charcoal and sand with stiff horticultural moulds becomes then apparent.

July 1st, 1965

WALTER BLOM & SON, LTD.

The Wild Garden—continued

CROCUS (Hardy bulbous perennial). Whatever position these beautiful early flowering plants fill in our gardens, they never fail to flower in great profusion during the trying month of March. Although common in the orchard and on the lawn, they should nevertheless find a place in the approaches of woodland, where their rich shades of colour, when seen in bold masses, produce an imposing effect.

Choice mixture of blue and purple varieties. 100 bulbs, 17/-; 1,000 bulbs, 160/-

Choice mixture of striped varieties. 100 bulbs, 18/-; 1,000 bulbs, 170/-

Choice mixture of white varieties. 100 bulbs, 18/-; 1,000 bulbs, 170/-

Golden yellow. 100 bulbs, 17/-; 1,000 bulbs, 160/-

Choice mixture of all colours. 100 bulbs, 17/-; 1,000 bulbs, 160/-

CROCUS SPECIES—flowering February-March.

Tomasinianus, silvery lilac. 100 bulbs, 17/6; 1,000 bulbs, 165/-

Tomasinianus Whitewell Purple, purple 100 bulbs, 17/6; 1,000 bulbs, 165/-

DAFFODILS AND NARCISSI (Hardy bulbous perennial). Turf is the natural habitat of Narcissi and consequently many thrive much better in grass than in the ordinary garden border or bed. When planting Daffodils and Narcissi in grass and woodland, some advocate scattering the bulbs by hand on the grass and then planting them where they fall. Others recommend planting in large groups with a good space between the individual bulbs, as each bulb will become a clump of eight or ten in as many years. The object should be to plant so that they look as natural as possible.

Daffodils and Narcissi in 10 varieties. 100 bulbs, 70/-; 1,000 bulbs, 650/-

Daffodils and Narcissi in 5 varieties 100 bulbs, 67/-; 1,000 bulbs, 630/-

Daffodils and Narcissi, Blom's grand mixture .. 100 bulbs, 65/-; 1,000 bulbs, 625/-

DWARF NARCISSI (Hardy bulbous perennial). It is a great joy to see these various dainty Narcissi appear, some as early as February, with their misleadingly delicate air, but which in reality are extremely long lasting even under adverse weather conditions. Once established they multiply freely, some seeding themselves.

bulbocodium conspicuus (YELLOW HOOP PETTICOAT). 100 bulbs, 32/-; 1,000 bulbs, 300/-

bulbocodium obesus, larger than the above, stronger colour, creeping foliage. 100 bulbs, 40/-; 1,000 bulbs, 380/-

cyclamineus (YELLOW CYCLAMEN FLOWERED NARCISSUS). 100 bulbs, 50/-; 1,000 bulbs, 475/-

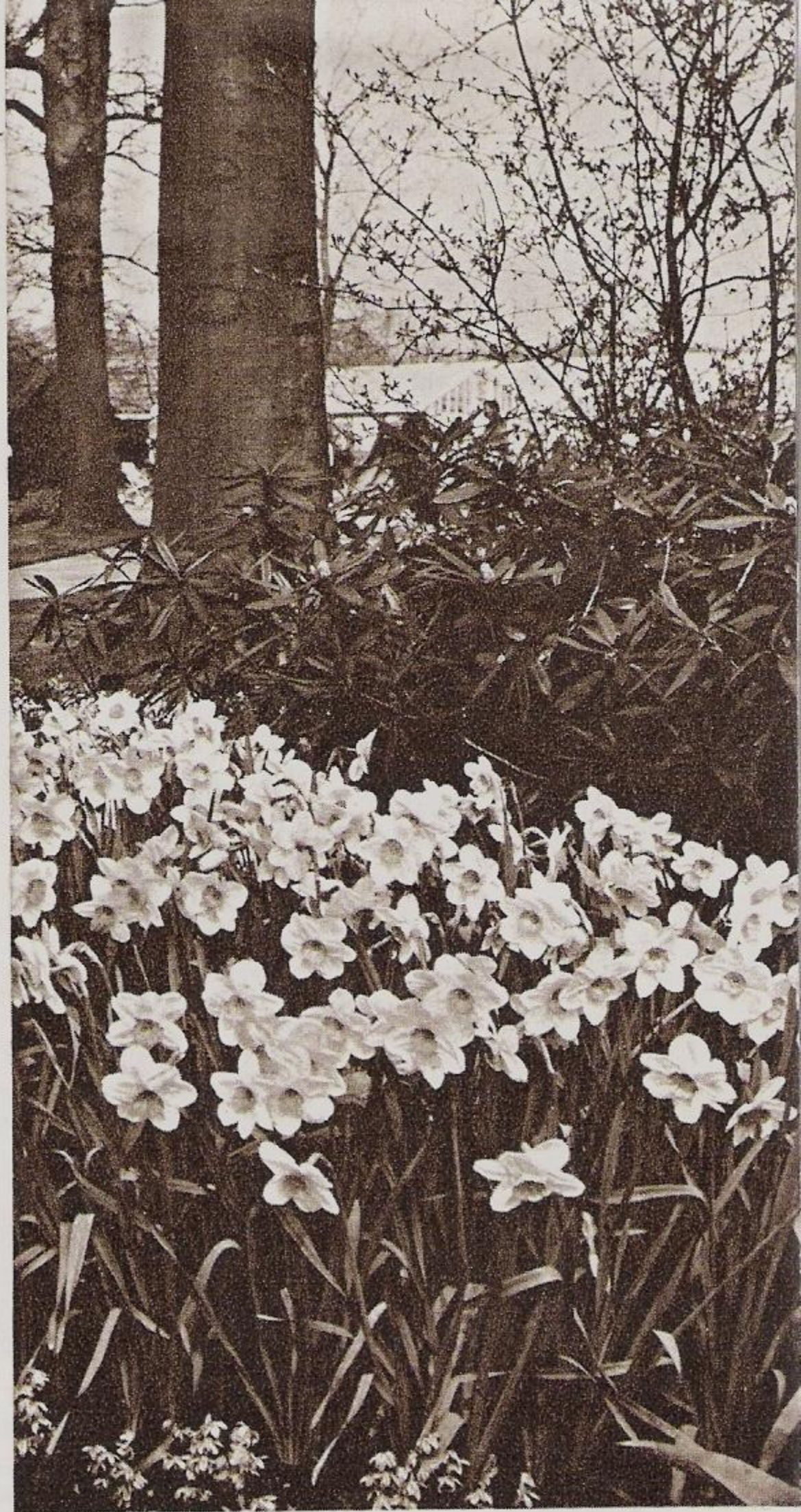
cyclamineus February Gold, clear golden yellow. 100 bulbs, 95/-; 1,000 bulbs, 900/-

minimus, smallest Narcissus, perfect miniature of the WILD DAFFODIL. 100 bulbs, 48/-; 1,000 bulbs, 460/-

triandrus albus (ANGEL'S TEARS), clusters of creamy white flowers. 100 bulbs, 32/-; 1,000 bulbs, 300/-

FRITILLARIA Meleagris (SNAKE'S HEAD FRITILLARY) (Hardy bulbous perennial), flowers profusely, each blossom dangling lamp like from its gracefully curved scape, dancing and trembling in the breeze like little Chinese lanterns, full of light and graceful beauty. 100 bulbs, 30/-; 1,000 bulbs, 280/-

MUSCARI Heavenly Blue (Hardy bulbous perennial), the STARCH OF GRAPE HYACINTHS, as the Muscari are called, all bear a great resemblance to each other; therefore one need grow only the best variety to represent the beauty of the genus. HEAVENLY BLUE is unquestionably one of the finest, the colour being a beautiful sky blue. 100 bulbs, 21/-; 1,000 bulbs, 190/-



The Rock Garden—continued**CYCLAMEN** *Spring flowering species—concluded*

ibericum, its dainty crimson flowers are produced throughout the early part of the year, marbled dark green foliage.

Each, 1/9; 12 corms, 18/-

repandum, deliciously fragrant rhododendron rose blossoms with handsome silver marbled leaves, flowers April-May.

12 corms, 10/6; 100 corms, 70/-

DWARF NARCISSI. The importance of early planting is not generally understood, but there are reasonable grounds for the opinion that Narcissi, and especially the dwarf kinds, are usually planted far too late; they naturally throw fresh roots very soon after flowering, so that the bulbs can be said to be at rest only during a short period. For most kinds ordinary soil will do, sandy loam for **BULBOCODIUM**, peaty soil for **CYCLAMINEUS SPECIES**; no manure should be applied.

Dwarf Narcissi are great favourites on the rock garden and in no position do they look better than growing through a

carpet of some creeping rock plants. They may also be grown as pot plants in the alpine house, and are especially suitable for naturalising.

bulbocodium conspicuus (HOOP PETTICOAT) (6). Very quaint with its hooped cup of a rich golden yellow, the perianth is much reduced, almost wisp like and paler, protruding from the cup the anthers curl upwards; rush like foliage. 3-4. 12 bulbs, 5/-; 100 bulbs, 32/-

bulbocodium obesus (5), the bright deep orange yellow flowers stand erect above the rush like dark foliage, twisted and lying in a contorted manner near the ground. 3-4.

12 bulbs, 6/-; 100 bulbs, 40/-

bulbocodium Romieuxii (6), attractive HOOP PETTICOAT of very dainty form, holds its canary yellow head above the foliage; charming rock plant, excellent for the alpine house. 1-2.

12 bulbs, 11/6; 100 bulbs, 78/-

bulbocodium tenuifolius (5), producing dainty little blossoms of bright yellow, a miniature form, early flowering. 2-3 12 bulbs, 6/6; 100 bulbs, 42/-

canaliculatus (6), a miniature POLYANTHUS Narcissus, heads of three to four flowers with reflexing white perianth and globular golden cup, sweetly scented; erect narrow blue green foliage. April 12 bulbs, 8/-; 100 bulbs, 53/-

cyclamineus (CYCLAMEN FLOWERED NARCISSUS) (6), sprightly gold flower, straight but ruffled trumpet, pointed reflexed perianth. Excellent for naturalising, requires a rather damp situation. March 12 bulbs, 7/6; 100 bulbs, 50/-

cyclamineus Baby Doll (12). Very pure colouring, a long golden yellow trumpet, which is slightly ruffled at the base, reflexing perianth of a paler tone. Flowers later in the season and is therefore of particular value. 4-5 Each, 2/6; 12 bulbs, 27/-

cyclamineus Beryl (9). A dainty hybrid, perianth is slightly reflexed, petals are pointed, soft yellow shading to clear yellow towards the base, the cup is golden merging to soft orange at the mouth; pretty cutflower. 3-4 12 bulbs, 14/-; 100 bulbs, 95/-

cyclamineus Charity May (9), graceful clean cut bright yellow flowers, perianth typically reflexed with fairly broad overlapping petals, short narrow cup, colour deepening towards the finely crinkled margin. April Each, 3/-; 12 bulbs, 33/-

cyclamineus Dove Wings (10), pointed, ivory white reflexed petals, neat prettily fluted lemon yellow cup, shading softer towards the mouth; a lovely hybrid of delicate colouring gracefully carried on a slender stem. April Each, 4/-; 12 bulbs, 44/-

cyclamineus February Gold (12), a very beautiful hybrid, with clear yellow perianth slightly reflexing and a deep golden yellow trumpet, prettily frilled at margin; extremely lovely and graceful garden plant, profusely flowering, ideal for naturalising, lasting for weeks in the best condition. March 12 bulbs, 14/-; 100 bulbs, 95/-



NARCISSUS CYCL. MARCH SUNSHINE
ANEMONE ST. BAVO

The Rock Garden—continued**DWARF NARCISSI—continued**

cyclamineus Jack Snipe (9), a most cheerful hybrid, the delicately formed long perianth petals are cream, shading deeper towards their bases. The cup is short and straight with a waved margin, orange yellow; free flowering. 3-4.

Each, 4/6; 12 bulbs, 50/-

cyclamineus Jenny (12), a dainty cyclamineus hybrid with pointed gracefully reflexing pure white petals and pale primrose trumpet, which passes with age to white. Very pretty planted in a group in the rock garden, serenely beautiful in floral arrangements. April. Each, 8/6

cyclamineus Little Witch (8), a small flower of attractive form, trumpet narrower at the mouth than at the base, giving a slightly globular shape. A very sweet little hybrid of a lovely apricot gold whilst the reflexing perianth is primrose. 3-4.

Each, 2/3; 12 bulbs, 24/-

cyclamineus March Sunshine (10). A cheerful flower, well defined and of great beauty. The narrow perianth petals are canary yellow and reflexing, the straight trumpet is of the deepest gold, frilled at the edge. Flowers are produced in the greatest profusion and last a long time. Charming pot plant, extremely useful in the garden,

12 bulbs, 14/-; 100 bulbs, 95/-

good naturaliser. 3-4 12 bulbs, 14/-; 100 bulbs, 95/-

cyclamineus Peeping Tom (15). Remarkably beautiful clean cut flower; long, narrow rich golden yellow trumpet attractively rolled at the mouth, the reflexing perianth segments are a slightly paler colour. A hybrid of excellent substance and durability, standing the most adverse weather conditions. The earliest Daffodil peeping through in the garden, ideal naturaliser, exceptionally free flowering, lovely pot plant. 2-3. 12 bulbs, 18/6; 100 bulbs, 130/-

Erlicheer (7). A most charming addition to this class, 7-9 heavily scented fully double flowers are tightly clustered on a sturdy stem to form an almost spherical head of great beauty. The regularly formed individual florets are ivory white interspersed with petals of primrose yellow. April Each, 3/3; 12 bulbs, 36/-

Jonquil (12), graceful clusters of many buttercup yellow flowers, richly scented, borne on a slender stem, profuse bloomer of lasting quality, useful for naturalising. 4-5.

12 bulbs, 5/9; 100 bulbs, 37/6

Jonquil Baby Moon (12). An improvement of the well known JONQUIL in so far as its growing habits are concerned. It multiplies by natural increase of the bulbs as well as by seeding; flowers have the same strong scent. 4-5 12 bulbs, 11/-; 100 bulbs, 75/-

Jonquil double (10). Similar in growth to the SINGLE JONQUIL, but with double flowers. A very dainty variety which is specially valuable for cutting. 12 bulbs, 11/6; 100 bulbs, 78/-

Jonquil Lintie (12). Rounded petals of citrus yellow with a neat flat green eyed crown shading through gold to the orange rim form dainty flowers several of which make a graceful scented cluster. Slim strong stems and leaves .. 12 bulbs, 13/6; 100 bulbs, 90/-

Jonquil Sugarbush (9) unusual but attractive Jonquil, neat pale buff yellow cup with a silvery edge and a full ivory perianth with overlapping petals, faintly scented, lovely rock plant.

Each, 1/9; 12 bulbs, 18/-

juncifolius (RUSH LEAVED DAFFODIL) (4). One of the most dainty species of this section, flowers solitary, golden yellow, it has a tiny shallow cup, slender stem and slim foliage. Deliciously fragrant. April 12 bulbs, 7/6; 100 bulbs, 50/-

Lady Bee (13). Small neat head with pure white, rounded petals and a slender medium sized trumpet of cream becoming a lovely rich tea rose at the prettily frilled edge. April.

Each, 3/3; 12 bulbs, 36/-



NARC. TRIAN. RIPPLING WATERS
SCILLA SIBERICA SPRING BEAUTY

The Rock Garden—continued

DWARF NARCISSI—continued

- lobularus** (7), typical of the wild Daffodil found in meadows; perianth of soft primrose with a golden trumpet. It thrives in a damp sunny position. March. 12 bulbs, 7/-; 100 bulbs, 45/-
- minimus** (2-3). Tiniest of Daffodils, resembles the wild Narcissus in miniature. A really delightful little golden flower. It may be grown in pans for the alpine house, and is equally successful planted in the rockery or scattered between the stones of crazy paving; it increases each successive season. 2-3 12 bulbs, 7/3; 100 bulbs, 48/-
- nanus Little Beauty** (6). A bicolour miniature Daffodil with creamy white rounded petals and short broad deep yellow cup, prettily waved at mouth .. Each, 2/3; 12 bulbs, 24/-
- nanus Little Gem** (6), clear yellow, an attractive little flower with rounded petals and short neat trumpet, a shade deeper at the mouth. March Each, 1/6; 12 bulbs, 16/6
- obvallaris** (TENBY DAFFODIL) (10). Broad, erect perianth petals, neat trumpet with even frill turned back at the mouth. Clear celandine yellow throughout; one of the sturdiest Narcissi. March 12 bulbs, 8/-; 100 bulbs, 53/-
- Pencrebar** (syn. QUEEN ANNE'S IRISH JONQUIL) (10), fully double golden yellow flowers, sweetly scented. Plants are of true Jonquil type with characteristic rush leaved foliage; most charming early variety. April Each, 2/9; 12 bulbs, 30/-
- Roseworthy** (10), most attractive and striking flower, the pure white perianth is broad, flat and of good substance, the bright rosy pink colour of the cup extends right down to the base, it is well proportioned, beautifully frilled and expanded at the mouth. April. Each, 7/-; 12 bulbs, 75/-
- Rosy Trumpet** (12). A dainty plant with an unusual trumpet of salmon apricot, the pointed perianth segments are ivory white. A good grower, very attractive planted in clumps as a wild flower, lasts for almost six weeks. March 12 bulbs, 14/-; 100 bulbs, 95/-
- scaberulus** (6), rush like foliage, perfect miniature golden yellow flowers of JONQUIL form, one to three on a stem; short cup with slightly reflexing perianth and distinct green calyx behind the flower. 3-4 12 bulbs, 7/6; 100 bulbs, 50/-
- triandrus albus** (ANGEL'S TEARS) (7), a dainty and desirable variety, but so distinct and beautiful when compared with Narcissi generally, that it is always highly esteemed. It produces a cluster of pretty creamy white flowers with globular cup and reflexed petals; serenely lovely grown in pots in the alpine house. March 12 bulbs, 5/-; 100 bulbs, 32/-
- triandrus Dawn** (12). One or two sweetly scented flowers are held on the slender bright green stem. The pure white perianth is slightly reflexing, and the corona is almost flat and entirely symmetrical, lemon yellow with a green eye. 4-5 Each, 2/-; 12 bulbs, 21/-
- triandrus Hawera** (8), elegant little hybrid, bearing two to four pendent flowers with reflexing petals, corn yellow, strong grower; it comes into bloom when all others are over. May. Each, 3/-; 12 bulbs, 33/-
- triandrus Liberty Bells** (12). Most exclusive TRIANDRUS HYBRID, appealing, graceful and enchanting; head of two to four flowers of deep lemon yellow on a slender stem, cup slightly paler at margin. Lovely in the garden, dainty pot plant, exceptionally attractive as a cutflower for table decoration. April 12 bulbs, 17/6; 100 bulbs, 120/-
- triandrus Moonshine** (9). Dainty nodding heads of two to four chalice cupped ivory white flowers on a graceful stem give an illusion of fragile beauty. In reality the divided petals and fluted trumpet are of excellent substance and last a long time even under adverse weather conditions. April 12 bulbs, 10/-; 100 bulbs, 68/-
- triandrus Rippling Waters** (15), delicate heads of three ice white flowers, each one is daintily formed with a neat cup and slightly reflexing petals; it has great substance and as a cutflower it lasts a long time. April Each, 1/9; 12 bulbs, 18/-
- triandrus Shot Silk** (10). A refined attractive hybrid with heads of two to three dainty flowers, uniform in colour, silvery white throughout. An extremely lovely variety in the garden, also a most beautiful plant in pots. April 12 bulbs, 12/6; 100 bulbs, 85/-
- triandrus Sidhe** (13), the straight slender stems bear two to three scented flowers of a refined quality, reflexing smallish cream white perianth and deep butter cream cone shaped cup with a green cream eye; exceptionally lovely variety. April. Each, 2/6; 12 bulbs, 27/-
- triandrus Silver Chimes** (10), extremely lovely and charming hybrid with four to six nodding flowers of perfect grace, suspended like a cluster of little bells, the perianth segments are pure white, the dainty cup very pale primrose; well adapted for growing indoors on pebbles, but should be kept cool. May 12 bulbs, 16/6; 100 bulbs, 110/-
- triandrus Thalia** (12). A TRIANDRUS HYBRID of graceful appearance with its lovely white flowers produced in clusters. Apart from being a dainty garden plant it is also a very charming cutflower. April 12 bulbs, 11/6; 100 bulbs, 78/-
- triandrus Trifle** (10). This delightful hybrid has lemon tinted petals and a neat straight citrus yellow trumpet; one occasionally two dainty flowers borne on a sturdy stem. Ideal subject in the rock garden. April Each, 3/6; 12 bulbs, 38/-
- watieri** (4), very dwarf and dainty species from North Africa, flowers solitary, pure white with flat cup, green in the centre. One of the smallest of the species and one of the sweetest little things for rockwork, perfectly hardy. 3-4 Each, 1/6; 12 bulbs, 16/6

The Rock Garden—continued**DWARF NARCISSI—concluded**

W. P. Milner (8). Erect creamy white petals with pointed tips, the slightly fluted trumpet opens clear mimosa yellow, but turns cream as the flowering period lengthens. A charming pot plant, flowers are borne on slender stems, very prolific and strong. April.

12 bulbs, 12/6; 100 bulbs, 85/-

ERYTHRONIUM. We think it would be difficult to find a position where these beautiful plants can be seen to better advantage than when naturalised in clumps on the rockery. They are easily grown provided they are planted in a rather damp and sheltered position. April.

Kondo (HYBRID) (14). The primrose yellow reflexing petals of this charming hybrid are cinnamon at their base which forms a circle of richer colour round the centre of each flower. Clear green leaves with slender stems carrying 3-4 of these attractively marked blooms.

Each, 2/-; 12 corms, 21/-

Pagoda (HYBRID) (15). This exotic looking Erythronium is excellent for decorative purposes, the unusually long strong stems carry four to five large canary gold flowers, the flat petals reflex at the pointed tips giving with the conspicuous cinnamon anthers a graceful air to the lovely sprays; marbled foliage.

Each, 2/3; 12 corms, 24/-

revolutum White Beauty (8). A species of serene loveliness, exquisite in form, claiming a place with the elite of alpine

plants. Often two flowers on one stem resembling miniature lilies with swept back petals of purest white bearing a profusion of cream anthers which hang down within a rugged circle of indian red with a soft yellow flush at the throat. Also having attractive marbled leaves. First class in a rather damp situation, increases well. 4-5 .. Each, 2/9; 12 corms, 30/-

tuolumnense (8), a fine variety of vigorous growth, producing two to three handsome flowers of buttercup yellow on long, slender stems; very fine, glossy, unmottled foliage. This orchid like species is invaluable as a cutflower for small vases, extremely beautiful rock plant .. Each, 2/3; 12 corms, 24/-

ERYTHRONIUM DENSCANIS (DOG'S TOOTH VIOLET). These plants with their charming flowers in lovely delicate shades have the added advantage of possessing marbled leaves making attractive groups of foliage even when the flowering time is over.

blanca, white blossoms. 12 corms, 10/6; 100 corms, 70/-

Congo, rosy purple, very distinct.

12 corms, 10/6; 100 corms, 70/-

Lilac Wonder, long broad tapering petals of lovely columbine pink combine with prominent blue black anthers to make a most graceful and distinguished flower.

12 corms, 13/6; 100 corms, 90/-

Purple King. The broad tapering petals of heather purple reflex gracefully from the blue black anthers and the gold centre dappled with chocolate brown giving a tiger Lily effect to these elegantly poised flowers. Rich green leaves heavily marbled with chocolate brown .. 12 corms, 16/6

Narcissus cycl. Peeping Tom
Muscari botryoides album
Chionodoxa gigantea
Narcissus triandrus albus
Anemone blanda Pink Star
Aconite cilicica
Tulip sp. praestans Fusilier
Crocus chrys. Blue Pearl
Cyclamen Coum roseum
Crocus chrys. Cream Beauty



ERYTHRONIUM PAGODA

Bulbs to Flower on Christmas Day

without the aid of a Greenhouse

HYACINTHS

Blom's Renowned Christmas Hyacinths are famous for their easy forcing qualities, whether grown in the heart of a smoky town or in the country the result is the same—a glorious display of bloom and colour, while fragrance fills the home.

There is probably nothing more interesting than to watch the gradual development of the plant from the dormant stage until the blooms appear, and when this is possible in one's home the interest is even greater.

Cultural instructions are enclosed with the bulbs.

SELECTED QUALITY HYACINTHS FOR BOWL AND POT CULTURE

	6 bulbs	24 bulbs		6 bulbs	24 bulbs
White	11/-	42/-	Red	11/6	44/-
Pale Pink	11/6	44/-	Pale Blue	12/-	46/-
Pink	11/-	42/-	Delphinium Blue	11/6	44/-
Pink Perfection	12/-	46/-	Bright Blue	11/-	42/-
Salmon Apricot	12/-	46/-	Yellow	12/-	46/-
Rose du Barry	12/-	46/-			

WHITE ROMAN HYACINTH

These may be set on pebbles, the bulbs just above the water level, or planted in fibre or soil; they should be grown cool and in the dark until the beginning of November, then removed to full light. A temperature of about 50 degrees towards flowering time is ample for their development. For further particulars please refer to page 29, par. 6.

Extra choice, large bulbs	6 bulbs, 15/6; 24 bulbs, 58/-
Selected quality	6 bulbs, 11/9; 24 bulbs, 44/-

EARLY HYACINTHS

Fairy Blue. Delicate porcelain blue flower particularly noted for its delightful and refreshing fragrance reminiscent of THYME and the OLD PHEASANT'S EYE NARCISSUS. It has the easy cultural characteristics of ROSALIE, but it is different in form and stature. Height 9 in.

6 bulbs, 13/6; 24 bulbs, 52/-

Rosalie. Neat dainty head, slender five petalled bells of deep rose pink with softer shading towards the edges. An extremely long lasting variety. Grow as ROMAN HYACINTHS, giving a little heat towards flowering time. Height 8 in.

6 bulbs, 9/-; 24 bulbs, 34/-

DAFFODILS and NARCISSI

We have great pleasure in introducing to you a few varieties of Daffodils and Narcissi which may be successfully grown to bloom at this time of the year. They have been specially cultivated and treated for the purpose and may be grown to perfection without the least trouble if the two major points for their success are strictly adhered to.

The pots and bowls should be removed from the plunge on December 1st, transferred indoors and placed in full light in a temperature of 60 degrees **for four days only.**

On December 5th, they should be removed to a cool room in an even temperature of 50-55 degrees and exposed to full light. This will ensure that the blooms develop to normal size while the flowers will last a very considerable time.

These bulbs will be despatched by post, separately from other goods on order, on or about October 6th and should be planted immediately on arrival and well watered, or better still, thoroughly soaked before they are plunged.

Golden Harvest (1a). The master golden yellow Daffodil. A bowl of GOLDEN HARVEST Daffodils produces a wealth of bloom of wonderful quality, unsurpassed by any other.

12 bulbs, 24/-; 50 bulbs, 90/-

Patria (1b). Creamy white perianth, pale primrose trumpet; free flowering bicolor, very easy grower. An extremely beautiful variety for indoor cultivation at this time of the year, produces large blooms on good stems

12 bulbs, 27/-; 50 bulbs, 98/-

Patriarch (2b). Decorative Narcissus, pure white perianth and large shallow, beautifully frilled corona of tangerine, flushed with apricot

12 bulbs, 21/-; 50 bulbs, 78/-

Bulbs for Christmas Flowering—continued**DAFFODILS and NARCISSI—concluded**

- Peeping Tom** (CYCLAMINEUS HYBRID), rich golden yellow trumpet, long, narrow and straight, the reflexing perianth is slightly paler in colour. Ideal Daffodil for bowls, producing a wealth of bloom, which lasts for weeks in perfect condition. 12 bulbs, 27/-; 50 bulbs, 98/-
- Smiling Queen** (2b), pure white perianth, gracefully frilled golden orange crown; cheerful variety very free flowering, fine pot plant 12 bulbs, 21/-; 50 bulbs, 78/-
- Texas** (4). Magnificent large fully double flower of great beauty with broad petals of cream, gold and tangerine. Greatly appreciated for its colour effect .. 12 bulbs, 21/-; 50 bulbs, 78/-
- Valiant Spark** (2a). Most attractive and very brilliant flower, celandine yellow perianth, deep slightly fluted crown of bright tangerine orange. A seedling from SCARLET ELEGANCE, flowering earlier and more profusely 12 bulbs, 21/-; 50 bulbs, 78/-
- Verger** (3b). Pure white perianth and small crown of lemon yellow with a narrow border of bright orange. Perfect pot plant, ideal cutflower 12 bulbs, 21/-; 50 bulbs, 78/-
- Yellow Sun** (2a). Large clear yellow perianth and a golden yellow crown deeply frilled at mouth, very free flowering 12 bulbs, 21/-; 50 bulbs, 78/-

NARCISSI

Particularly suitable for growing on pebbles in water

Bulbs should be set or planted immediately on arrival. Put a layer of pebbles to within two inches from the rim in the bowl, place the bulbs thereon and fill up with pebbles which will keep the bulbs upright and help to hold the roots down. Use clear rainwater, add a little charcoal; keep water level just below bottom of bulbs; do not use chlorinated or chemically softened tap water. The bowls should be placed in a cool place (light or dark) in a temperature of 45 degrees; by the end of November they may be removed to an *airy room* and placed on a window sill where a temperature of 50 to 55 degrees may be maintained. Keep the bowls away from a radiator or any other form of heating, this will ensure healthy growth and a long flowering time.

BLOM'S treated CRAGFORD. Each stem holds three to four dainty flowers with milk white petals and brilliant orange scarlet cup producing a grand show of colour. The foliage develops slower than the flower buds but will correct itself when they commence to bloom 12 bulbs, 17/-; 50 bulbs, 65/-

Grand Soleil d'Or. After years of careful selection, we are in a position to offer again French grown bulbs of excellent quality. These produce larger heads on a shorter stem and flower earlier than those produced at the Scilly Isles. Culture as for PAPERWHITE GRANDIFLORA. 12 bulbs, 27/-; 50 bulbs, 98/-

Paperwhite grandiflora. If a short sturdy growth is required, the bulbs should be kept in full light from the start in a cool temperature not over 50 degrees. 12 bulbs, 17/-; 50 bulbs, 65/-

EARLY TULIPS

There are a few varieties of Early Tulips which may be successfully forced to bloom for Christmas. The bulbs should be planted early, before the middle of September, and plunged in the coolest place in the garden.

In the case of warm weather during this period it may be advisable to water the bed sparingly; if, however, adverse weather conditions persist we suggest covering the bed with a sheet of material which will keep the water from the bed.

They may be brought inside around December 1st and placed in the dark in a temperature of 65 degrees. When the plants have grown another inch or two, the pots or bowls may be removed to the light and if a regular temperature of maximum 70 degrees is possible, this will be to their advantage, and they will have ample time to come into flower for the occasion.

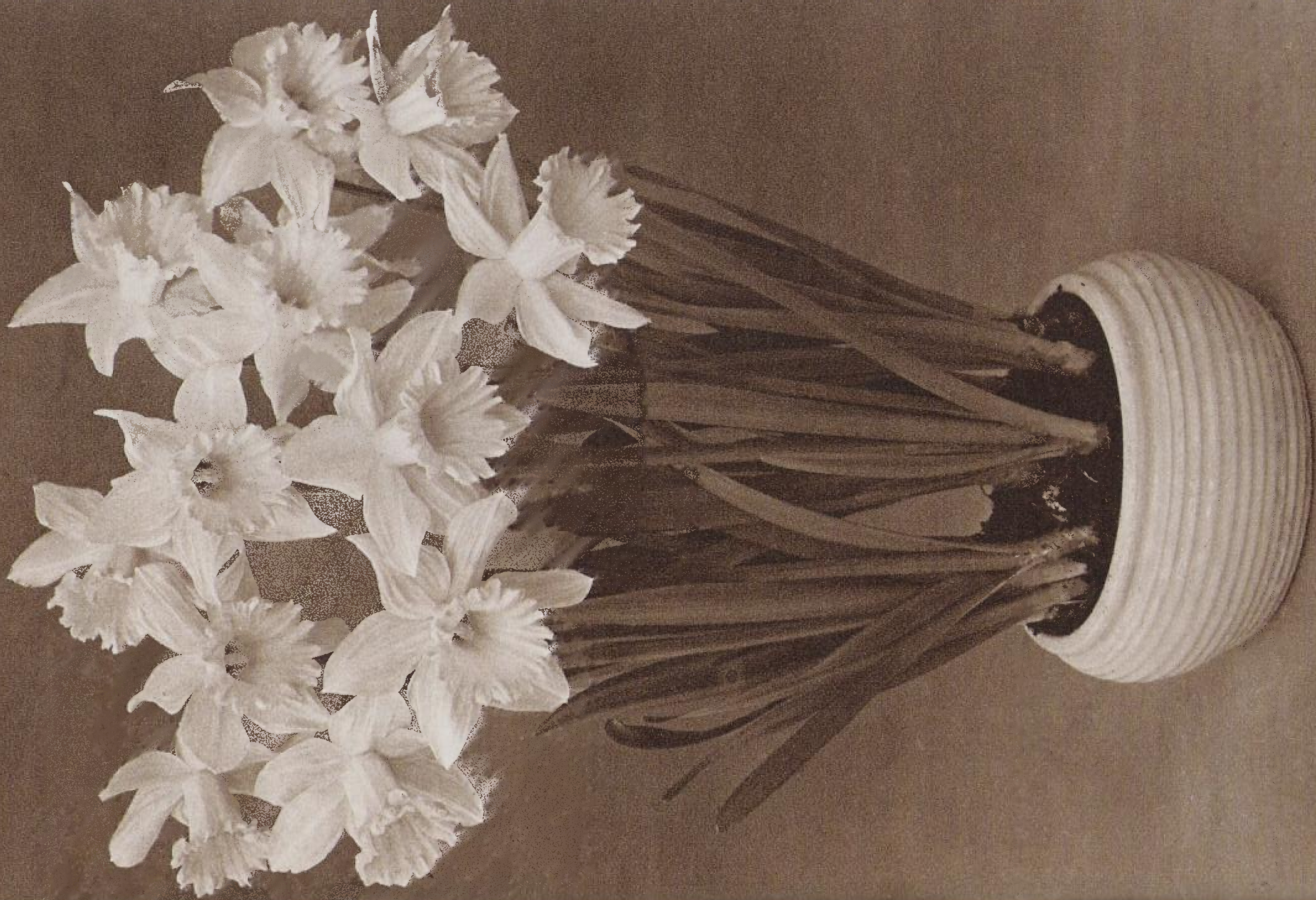
Brilliant Star Maximus, an improved form of the popular BRILLIANT STAR produces at this time of the year a short stemmed flower, rich post office red, a very gay colour for Christmas. It would be difficult to conceive a colour more gorgeous and striking than is represented in this variety; it may be successfully transplanted to fancy bowls. 12 bulbs, 15/6; 100 bulbs, 105/-

Levant, a very large clear yellow Tulip of fine substance, it is perfectly formed, oval shaped, carried on a strong tall stem. Extremely handsome pot plant of lasting quality. 12 bulbs, 11/-; 100 bulbs, 75/-

BLOM'S FIBRE FOR BULB GROWING

We can offer the above in cartons containing sufficient for 7 to 8 medium sized bowls at 11/- per carton, packing and carriage paid.

For quantities over six cartons, price on application.



GOLDEN HARVEST
AT CHRISTMAS

Daffodils and Narcissi

Daffodils and Narcissi for forcing

Daffodils are amongst the most popular flowers early in the season and unlike some other forced bulbs, lose none of their grace and beauty, on the contrary, the protection they receive when grown under glass rather adds to the purity of the flowers and the perfection of their shape and outline.

The principal requirements are early and shallow planting **in deep pots or bowls**; the bulbs must be made firm in the soil, as the mass of roots descending in a body frequently lifts the bulbs from their place. To avoid risk in this direction it is always best to plunge them in six inches of soil or coal ashes. **It is essential to set the bowls level at the bottom of the plunge.** Bulbs intended for forcing should have been planted for no less than 12 to 16 weeks; thus treated, they root, grow and flower in a perfectly natural and uniform manner.

By early January the pots or pans may be uncovered and brought into a cool greenhouse or cold frame or unheated room indoors near the light. Daffodils should not be forced, a temperature of 45–50 degrees is ample and plenty of fresh air is necessary for the proper development of the plants, until the flower buds are clearly visible. At this stage, they can stand a slightly increased temperature, about 50–55 degrees, but they require all the time plenty of ventilation and preferably a damp atmosphere to grow them to perfection.

If placed from the plunge direct into the living room, the chances are that the flower stems will become strangled in the neck of the bulbs, while the leaves wither and growth will cease.

The same directions apply to Daffodils planted in bowls in fibre; particular care should be taken that the fibre is kept damp and never allowed to become dry. Before planting, the fibre should be thoroughly moistened in a heap, then fill the bowl half way, place the bulbs thereon and cover them, pressing well around the bulbs, to prevent them from rising whilst rooting. The bowls should be wrapped up in newspaper, plunged outside in the garden on a cool spot and covered with 6 in. soil, leafmould or ashes; the covering soil should be kept damp but not wet and in case of heavy rain or a wet spell, the plunge should be covered over with a piece of sheeting. Water should not be allowed to stand at the bottom of the bowls.

If no garden is available, the bowls must be stored in a cool, damp cellar. A warm cellar or dry cupboard are not suitable places to grow bulbs.

After the bowls have been watered, it is advisable to lay them on their side for a short while to enable surplus water to drain away.

Planting Daffodils in the Garden

All kinds of Daffodils and Narcissi should be in the soil by the end of October at the very latest. There is no appreciable difference in quality or quantity of bloom planted from the middle of September to the middle of October; but if planting takes place much after that time, there is always a distinct falling off in development and more especially in foliage.

Bulbs should be planted 9 in. apart, 6 in. deep in light soil and 4 to 5 in. in soil of a heavy nature; in no circumstances should shallow planting be allowed.

Annual lifting is not advisable but they may with safety be left undisturbed for at least three years and more, provided ample room be accorded the bulbs at first.

If planted under shrubs or trees, it must be understood that the increase of bulbs is distinctly less than in the open garden.

Daffodils in Woodland

The above named position is perhaps the most serviceable for the proper utilisation of the Narcissus. It would be difficult, if not impossible, to name any position in which many of the Daffodil family appear so beautiful, so natural, or so much at home. The very grass, the trees, and above all the natural virgin soil of such places are their right from nature, and one wonders why Narcissi are not planted in their thousands where such places exist. This applies equally to naturalising in orchards and meadows as it does in the woodland.

Daffodils and Narcissi should be planted on receipt, if left in the bags for one or more weeks the bulbs may go bad. This refers in particular to the Bicolour and White Trumpets (1B and 1C) and Leedsii Narcissi (2C and 3C).







IRISH LUCK 1A

Daffodils

The varieties marked *a* are the easiest for indoor growing for flowering early February, those marked *b* for flowering after the middle of February. Varieties for exhibition are marked*. The figures in brackets indicate the height in inches, when in full bloom.

DIVISION 1A Yellow Trumpets

- ***Arctic Gold** (17). A medium sized flower of uniform solid gold colour throughout and superb quality, well poised on a strong stem. The perianth segments are of smooth texture and the well proportioned trumpet is widely flanged and serrated at the mouth. It is notable for the beauty of its form and habit, very free flowering .. Each, 6/-; 12 bulbs, 65/-
- ***Caravelle** (16). This is a high quality flower of uniform golden yellow throughout, the broad overlapping perianth segments are slightly pointed at the tips, the trumpet is beautifully proportioned and neatly rolled at the mouth. Tall strong plant, free increaser. Each, 20/-

Yellow Trumpets (IA)—continued

- bCovent Garden** (16). A lovely deep golden yellow trumpet which is long and evenly serrated at mouth, the perianth is slightly paler, very elegant and symmetrical, the flower is of medium size and very durable. An early and easy forcer, excellent for the garden, free flowering 12 bulbs, **14/6**; 100 bulbs, **100/-**
- Cromarty** (14). A perfect Daffodil of faultless form and beautiful quality; broad, smooth, flat perianth, standing at right angles to the straight, long trumpet, neatly flanged and serrated at mouth; colour deep self gold; free flowering and of sturdy habit. A grand garden plant Each, **2/-**; 12 bulbs, **21/-**
- bDutch Master** (18). A beautifully balanced trumpet, evenly turned back at the flanged mouth and broad erect overlapping perianth petals of rich ducat gold throughout, combine to make a large smooth flower of excellent form. A grand garden variety of sturdy habit, outstanding pot plant 12 bulbs, **16/6**; 100 bulbs, **110/-**
- *Goldcourt** (16). A neat and perfectly formed Daffodil of great substance and smooth texture. Flat, overlapping pointed segments and well balanced not over wide trumpet, which is bell mouthed, the whole flower is pure solid gold throughout .. Each, **3/-**; 12 bulbs, **33/-**
- aGolden Harvest** (17), a wonderful Daffodil of great size and massive substance, a most striking giant trumpet of solid golden colour, beautifully flanged and deeply serrated at mouth. A flower of many qualities having size, colour, and strength, a grand forcer from early January onwards.
- Extra large bulbs** 12 bulbs, **17/-**; 100 bulbs, **115/-**
- Selected quality** 12 bulbs, **14/-**; 100 bulbs, **95/-**
- British grown, first size** 12 bulbs, **12/6**; 100 bulbs, **85/-**
- *Golden Rapture** (18). This magnificent flower is uniform clear golden yellow and measures almost 5 in. across; the large broad perianth segments are beautifully smooth, well overlapping and of lovely thick texture, the long trumpet is widely flanged and frilled at the mouth. A splendid exhibition flower, tall robust and showy garden plant .. Each, **25/-**
- bGolden Top** (17). Neat well overlapping primrose yellow perianth surrounding a smooth straight canary yellow trumpet evenly flanged and serrated at mouth. An excellent Daffodil of good proportions and fine substance, sturdy and free blooming. Most valuable grown as a pot plant from the middle of January onwards Each, **1/9**; 12 bulbs, **18/6**
- Grape Fruit** (17), a distinct flower of very great beauty but the remarkable feature is the lovely colouring. Pale lemon perianth, long straight trumpet changing to apricot cream and a slight greenish tinge at the throat. An unusual shade Each, **3/6**; 12 bulbs, **38/-**
- Hunter's Moon** (16). A perfectly lovely flower of unique colouring, arrayed in graded tints of clear, cool greenish lemon, most intense at the outer edge of the beautifully flanged and serrated trumpet and paler at the edges of the petals. Free blooming, vigorous garden plant, most beautiful in pots Each, **4/-**; 12 bulbs, **44/-**
- *Irish Luck** (18). Exceptionally handsome plant with a beautifully balanced short necked flower of great distinction carried erect on a strong stem. Broadly overlapping but pointed petals of rich ducat gold at right angles to the smooth trumpet which is just frilled at the mouth. Strong growing sturdy variety lasting long in good condition. One of the latest yellow Daffodils Each, **2/6**; 12 bulbs, **27/-**
- bKing Albert** (18). Enormous flower of the highest quality, the perianth is deep golden yellow, beautifully smooth and flat and of great substance; the rich deep gold trumpet is widely flanged at mouth. An outstanding Daffodil, extremely lovely pot plant, delightful in the garden 12 bulbs, **17/-**; 100 bulbs, **115/-**
- King Alfred** (18). This exquisite Daffodil is a plant of stability and hardiness, for every situation and use. Its self coloured bright yellow flower, the trumpet of which is beautifully flanged and serrated at mouth, is of elegant form and wonderful substance.
- Extra large bulbs** 12 bulbs, **14/6**; 100 bulbs, **100/-**
- Selected quality** 12 bulbs, **12/-**; 100 bulbs, **80/-**
- British grown, first size** 12 bulbs, **11/-**; 100 bulbs, **75/-**
- *Kingscourt** (16). One of the loveliest Daffodils yet introduced, a grand flower of faultless form, superb quality and uniform intense colour; the slightly hooded perianth is soft golden yellow, the trumpet is deeper and bell mouthed. Strong, sturdy plant, fine exhibition variety Each, **3/-**; 12 bulbs, **33/-**
- aMagnificence** (18). One of the first Daffodils out in the garden and a valuable variety for early forcing. A lovely bloom of medium size, a deeply cut trumpet of rich yellow, the perianth is narrow and pointed.
- Extra large bulbs** 12 bulbs, **14/6**; 100 bulbs, **100/-**
- British grown, first size** 12 bulbs, **11/-**; 100 bulbs, **75/-**
- bMayor Gouverneur** (17). An exquisite soft corn yellow flower of perfect balance and proportion, smooth texture and refined quality, the perianth stands boldly at right angles to the trumpet, which is of fine decorative outline. Its lovely colour and large size make it a very beautiful garden plant, splendid forcer 12 bulbs, **18/6**; 100 bulbs, **130/-**



GRAPEFRUIT 1A

Yellow Trumpets (1A)—continued

***Moonrise (15).** Unique evenly shaped flower of a soft lime yellow; flat, smooth, rather pointed perianth segments standing at right angles to the well balanced trumpet, which is deeply frilled at the mouth. An extremely lovely Daffodil of perfect carriage and charmingly dainty colour Each, 2/-; 12 bulbs, 21/-

Peking (17). Most distinct and charming flower of a lemon cream. It has a softly coloured perianth of grand quality and a long trumpet with a touch of apricot at the frilled edge. A Daffodil of great substance and very lasting, either on the plant or when cut, also a perfect pot plant later in the season 12 bulbs, 18/-; 100 bulbs, 125/-



PATRIA 1B

Yellow Trumpets (1A)—continued

***Pretoria (16).** An outstanding large yellow trumpet with broad, smooth, flat, slightly pointed perianth segments standing at right angles to the well proportioned trumpet which is evenly serrated at the mouth. A lovely exhibition variety and a perfect garden plant, the most free flowering yellow Daffodil Each, **2/3**; 12 bulbs, **24/-**

bRembrandt (17). Rich mimosa yellow, a very early Daffodil of immense size and good quality. The petals are flat, broad and rather pointed, the large expanded trumpet is deeply frilled at the mouth. Very strong plant and free flowering. An excellent variety for pots, lasting a long time in good condition.

Extra large bulbs	12 bulbs, 14/6 ; 100 bulbs, 100/-
Selected quality	12 bulbs, 12/6 ; 100 bulbs, 85/-
British grown, first size	12 bulbs, 11/- ; 100 bulbs, 75/-

Yellow Trumpets (1A)—concluded

- *Ulster Prince** (16). A large rich self golden Daffodil of first class quality and fine substance, broad, pointed smooth perianth and well proportioned flanged trumpet; durable flower with a short neck on a strong stem Each, 5/-; 12 bulbs, 55/-
- bUnsurpassable** (18). Blooms of enormous size, one of the largest Daffodils, colour buttercup yellow of great depth and brilliant intensity, the grand trumpet is deeply serrated at mouth. Exceptionally beautiful as a pot plant and a garden variety of great splendour.
Extra large bulbs 12 bulbs, 16/6; 100 bulbs, 110/-
Selected quality 12 bulbs, 13/6; 100 bulbs, 90/-
British grown, first size 12 bulbs, 12/-; 100 bulbs, 80/-
- *Wexford** (16). A well proportioned flower of superb quality, of a uniform clear soft golden yellow colour. The perianth segments are beautifully flat and smooth, slightly shovel pointed, standing at right angles to the trumpet, which is nicely expanded and frilled at the mouth. Strong robust plant Each, 3/6; 12 bulbs, 38/-
- *Yellow Idol** (17). A lovely clear cut flower of very bright jasmine yellow throughout, the broad shovel pointed perianth petals make a flat background to the slender trumpet which turns out at its fluted mouth. An outstandingly bright yellow of definite character, very long lasting in the best condition Each, 3/-; 12 bulbs, 33/-

DIVISION 1B

Bicolour Trumpets

- bBonython** (19). Broad, smooth, flat and overlapping cream white perianth of remarkable substance with a lemon trumpet becoming cream as the flower develops. A most valuable pot plant on account of its earliness, fine for bowls and perfect garden plant.
 12 bulbs, 17/6; 100 bulbs, 120/-
- bCelebrity** (17). A beautiful variety of good size, ivory white perianth with overlapping segments, primrose trumpet nicely rolled back at the mouth, exceptionally free blooming, ideal pot plant, lovely in the garden, sturdy growth .. 12 bulbs, 18/-; 100 bulbs, 125/-
- aForesight** (14). Very charming flower of good form and quality with flat milk white perianth and well proportioned neatly flanged lemon trumpet. An easy and early forcer, remarkably showy and decorative as a pot plant; rather short stem .. 12 bulbs, 17/6; 100 bulbs, 120/-
- bGeneral Patton** (17). Beautiful early variety with an ivory white perianth, the canary yellow trumpet is deeply flanged and ruffled at mouth. Excellent pot plant, good forcer, strong grower Each, 1/9; 12 bulbs, 18/6
- *Newcastle** (16). This is undoubtedly the best bicolour trumpet to date. A lovely large flower with broad flat pure white perianth of impeccable quality standing at right angles to the perfectly proportioned deep golden yellow trumpet which does not fade as the flower ages. Fine robust plant Each, 140/-
- aPatria** (15). A perfectly symmetrical, large flower. The smooth, overlapping, creamy white perianth is of enormous size, and the bold, beautifully finished, pale primrose trumpet is elegantly rolled back at the mouth. A variety of very distinct character, produces a first class garden plant and is of great value for indoor growing. Early and very free flowering Each, 2/3; 12 bulbs, 24/-
- b*Preamble** (13). Well contrasted clean bicolour of superb quality; smooth, flat, pure white perianth, standing at right angles to the well proportioned bright chrome yellow trumpet, which becomes more lemon in tone as the flower ages. A first class and faultless exhibition variety, every bloom coming perfect Each, 3/-; 12 bulbs, 33/-
- bPresident Lebrun** (16). An attractive flower with broadly overlapping ivory white perianth of strong waxy texture, the long broad trumpet opens primrose but soon changes to deep cream and is well finished by a graceful frill. A splendid variety of vigorous growth, early and easy forcer 12 bulbs, 17/6; 100 bulbs, 120/-
- bQueen of the Bicolours** (16). Remarkably handsome Daffodil, unrivalled in its particular form; perianth creamy white, broad and overlapping; short bright golden yellow trumpet expanded and beautifully rolled back at mouth. Superb for pots and bowls, grown under glass its refined beauty is indeed unsurpassable 12 bulbs, 17/6; 100 bulbs, 120/-
- Spitzbergen** (18). Large well proportioned flower, broad overlapping ivory white perianth of good substance, the bold trumpet which is rolled back at the brim opens pale primrose and passes to ivory white when fully developed. Fine garden plant. Each, 2/-; 12 bulbs, 21/-
- Spring Glory** (16). Pure white perianth, petals large and spreading, long, bright canary yellow trumpet with a wide mouth. Vigorous, showy garden plant.
Extra large bulbs 12 bulbs, 17/6; 100 bulbs, 120/-
Selected quality 12 bulbs, 14/6; 100 bulbs, 100/-
- b*Trousseau** (18). An exquisite bicolour of superb quality and finish, the lovely blue green foliage sets off its gentle colours to perfection. Smooth, flat, pure white perianth and well proportioned, straight neatly flanged trumpet which opens a soft yellow and passes gradually to a most delicious rosy cream. Durable flower, well poised on a tall stem; exceptionally beautiful pot plant Each, 2/-; 12 bulbs, 21/-



BROUGHSHANE 1C

DIVISION 1C
White Trumpets

The opening trumpets are from pale cream to pale yellow, but they quickly turn to their white stage. This applies to all white Daffodils.

*b****Beersheba** (13). Pure white, long slender trumpet and long pointed perianth segments, large flower of beautiful proportions, giving the impression of grace, despite its size. A vigorous grower, a rapid increaser and a grand exhibition variety. Well adapted for naturalising 12 bulbs, **17/6**; 100 bulbs, **120/-**

White Trumpets (1C)—concluded

- ***Broughshane** (15). A giant white flower of perfect form and balance, the noble trumpet being widely flanged, reflexed and frilled, does not overbalance the immense perianth. The grand flower is of good substance and very durable. A perfect Daffodil. Each, 3/-; 12 bulbs, 33/-
- ***Cantatrice** (16). Generally regarded as one of the best and most graceful pure white trumpets. A refined flower of exquisite and marvellously smooth texture; clean cut, pointed, even perianth standing out from the well balanced, narrow, waxy trumpet. A perfectly lovely variety of great merit, very free flowering Each, 5/-; 12 bulbs, 55/-
- ***Devon Loch** (18). This outstanding flower is purest white throughout; broad very smooth overlapping perianth of great substance and perfect quality, a well proportioned large trumpet beautifully frilled and flanged at the mouth. Ideal show flower. A most pleasing variety, it has blooms which are large and bold and yet of serene loveliness. Each, 17/6
- ***Empress of Ireland** (17). A truly majestic pure white flower of faultless form, balance and proportion; smooth flat perianth segments of immense breadth, the beautifully balanced trumpet is evenly flanged and frilled at the mouth; flower on strong stem. Each, 60/-
- ***Glacier** (17). Ice white broad overlapping pointed petals, the fairly narrow trumpet opens wide at the mouth and is beautifully frilled. This variety although of graceful appearance does not lack in substance. Strong robust plant, very large flower well poised on a tall stem Each, 25/-
- ***Glenshesk** (18). A splendid white trumpet of noble proportions well carried on a strong stem, the very large trumpet combines with the thick smooth perianth to make a flower of perfect and unequalled beauty. A first class show flower for quality and finish. Each, 10/-
- Kangchenjunga** (14). An immense bloom with very broad perianth segments, forming an almost perfect circle, and a magnificent, widely flanged, serrated trumpet; perianth pure white, trumpet palest lemon passing to white; a huge flower of stately carriage. Each, 3/-; 12 bulbs, 33/-
- Mount Hood** (17). A charming flower of lovely quality, fine form and perfect finish; broad pure white perianth of thick smooth texture, the ivory trumpet, which has its brim beautifully rolled back, soon passes to pure white throughout. A superb Daffodil of fine carriage which stands in the front rank as a medium late variety for pot work. It is a satisfactory grower and a beautiful strong garden plant.
- Extra large bulbs** 12 bulbs, 14/-; 100 bulbs, 95/-
- Selected quality** 12 bulbs, 12/-; 100 bulbs, 80/-
- Mrs. E. H. Krelage** (17). The broad, massive, snow white perianth segments are of great substance, the elegant trumpet which is neatly rolled back at the mouth opens soft primrose and passes to ivory white as the flower develops. A wonderful decorative Daffodil of great merit. Rather late flowering 12 bulbs, 14/-; 100 bulbs, 95/-
- ***Prestige** (17). A very large flower of great substance, beautiful quality and fine carriage, the shovel pointed pure white perianth segments are broad and of smooth texture, the bold trumpet which is gracefully rolled at the mouth opens very pale primrose but soon passes to white. A decorative flower of great beauty with strong stem and short neck. Each, 3/6; 12 bulbs, 38/-
- ***Vigil** (18), a superb large pure white Daffodil with broad sharp pointed perianth and a graceful well proportioned beautifully flanged trumpet. A flower of lovely quality and texture, fine strong plant Each, 50/-
- ***White Triumphator** (15). An immense flower of perfect form, splendid carriage and stiff substance, very broad overlapping perianth of grand texture, the trumpet is well proportioned, straight and gently serrated at mouth. The whole flower is silvery white throughout. A magnificent white trumpet of the highest merit. Each, 5/6; 12 bulbs, 60/-

**DIVISION 1D
Reversed bicolor**

- ***Spellbinder** (16). Magnificently proportioned flower, large, even, erect perianth of greeny lime yellow, the smooth trumpet, neatly turned back at the mouth, opens the same lime shade but becomes nearly white as the flower ages, apart from the brim which remains yellow. A really outstanding variety, excellent garden plant of upright habit with long lasting blooms Each, 3/-; 12 bulbs, 33/-

**Narcissi
DIVISION 2A**

Perianth yellow, corona coloured

- bAgathon** (19). A glorius flower of perfect form and proportion which carries its faultless head in a royal manner. The beautifully frilled, trumpet shaped, golden crown stands at right angles to the immensely broad, smooth, overlapping, clear yellow perianth. A garden plant of unequalled beauty, probably the largest in its class.

12 bulbs, 18/6; 100 bulbs, 130/-



AIR MARSHAL 2A

Narcissi (2A)—continued

***Air Marshal (18).** An outstanding variety with glistening golden yellow petals which are very long broad and widespread, neat straight cup of bright marigold orange, slightly frilled at the mouth. A splendid tall plant with a stiff stem and a short neck, free flowering, rapid increaser, perfect in all respects.

Each, 6/-; 12 bulbs, 65/-

Aranjuez (20). A distinct and very charming variety of perfect form; broad, even, rounded, clear yellow perianth of great substance with a shallow expanded crown of deep apricot becoming orange at edge. Excellent in the border, extremely lovely cutflower. 12 bulbs, 14/-; 100 bulbs, 95/-

***Armada (22).** Fine flower, remarkable for its high quality and refinement, its texture being beautifully smooth and solid; broad, overlapping, deep yellow perianth of great intensity, brilliant deep rich tangerine orange cup which is finely frilled and of particularly good form and proportion. Stands the sun well.

Each, 2/3; 12 bulbs, 24/-

Bahram (17). Broad, smooth, rich clear yellow perianth

and perfectly proportioned, rather shallow, strong orange red crown, ruffled at edge. A flower of first class quality, splendid substance, short necked, on a strong stem. A very decorative cutflower. Strong garden plant 12 bulbs, 14/-; 100 bulbs, 95/-

***Border Chief (17).** An exceptionally brilliant and large flower with bright golden yellow perianth of high quality and a large expanded bowl shaped crown of intense orange red. A most distinct and first class show flower Each, 14/-

Carbineer (18). A flower of very vivid colouring and splendid carriage, with broad, flat rich yellow perianth, standing at right angles to the large, bright orange red cup. A tall and strong grower; increases rapidly.

Extra large bulbs 12 bulbs, 12/6; 100 bulbs, 85/-

British grown, first size 12 bulbs, 9/-; 100 bulbs, 60/-

aCarlton (17). Perianth soft yellow, very broad, flat and well overlapping; large clear yellow crown of exceptional charm and grace, beautifully frilled and expanded at the mouth. A garden variety of great merit and a very showy pot plant, remarkably free flowering and excellent naturaliser.

Extra large bulbs 12 bulbs, 13/6; 100 bulbs, 90/-

Selected quality 12 bulbs, 10/6; 100 bulbs, 70/-

British grown, first size 12 bulbs, 9/-; 100 bulbs, 60/-

***Craigywarren (17).** Large, but beautifully formed flowers of magnificent thick substance, the broad rounded petals are rich mimosa gold and the smooth vase shaped crown is solid orange deepening to flame red at the hardly frilled mouth. Produces a quality show bloom, vigorous and free flowering Each, 3/-; 12 bulbs, 33/-

bDelibes (17). Flowers of excellent quality, the large broadly overlapping perianth petals are rich celandine yellow and the shallow crown is yellow deepening through gold to flame orange at the just crinkled edge. Exceptionally handsome pot plant, good forcer, beautiful garden variety because of its upright habit; very free flowering, stands the sun well.

12 bulbs, 16/6; 100 bulbs, 110/-

Dunkeld (15). A symmetrical, smooth, solid flower with broad circular clear yellow perianth of fine substance and shallow expanded vivid orange scarlet crown. Produces a vigorous plant, free flowering 12 bulbs, 14/-; 100 bulbs, 95/-

Narcissi (2A)—continued

Everton (19). The neatly fluted orange cup contrasts sharply with the clear lemon gold broad pointed perianth petals. An elegant well proportioned flower on a tall strong stem, upright foliage. Strong garden plant, free flowering, long lasting.

Each, 3/6; 12 bulbs, 38/-

***Fleurimont** (19). The bright yellow pointed petals are well overlapping and stand at right angles to the beautiful crown, which is tangerine orange gradually merging to pastel orange down the throat; it is trumpet shaped and widely expanded at the evenly waved mouth. An excellent garden plant and a most lovely cut-flower, lasting long in good condition. Sunproof.

12 bulbs, 18/-; 100 bulbs, 125/-

***Firemaster** (17). A strikingly brilliant and solid flower of medium size with deep yellow round flat perianth and well proportioned slightly expanded cup of most intense blazing orange red; stands the sun well. A good strong garden plant.

Each, 2/-; 12 bulbs, 21/-

a**Flora Tristan** (16). Handsome flower of splendid durable texture and fine quality, neat rounded perianth of clear yellow, intense apricot yellow crown with an attractive orange rim. Ex-

ceedingly beautiful pot plant and very profuse bloomer, it may be gently forced from the end of January 12 bulbs, 18/-; 100 bulbs, 125/-

a**Fortune** (19). The flower is very large and of lovely form and the whole plant is of magnificent stature. Perianth broad and well overlapping, colour soft yellow with a marvellous crown of glowing orange throughout. An energetic and healthy grower, early, free blooming. For perfect colour it should be grown in a cool, dampish part of the garden. One of the best and easiest for indoor cultivation.

Extra large bulbs 12 bulbs, 14/-; 100 bulbs, 95/-

Selected quality 12 bulbs, 11/-; 100 bulbs, 75/-

British grown, first size 12 bulbs, 9/-; 100 bulbs, 60/-

***Galway** (18). Outstanding, strong stemmed intense self golden flower of faultless form, broad smooth perianth with erect overlapping petals, the trumpet shaped crown is slender at the base and becomes wide at mouth. Splendid size, build, proportion, stature and colour. A magnificent garden plant Each, 2/-; 12 bulbs, 21/-

b**Han van Meegeren** (17). A distinct and richly coloured flower having broad, smooth, clear yellow perianth of great substance and an evenly frilled crown with an orange red band, flushed apricot yellow in the centre. Handsome plant of ideal stature, vigorous and free flowering, valuable for pot culture 12 bulbs, 15/6; 100 bulbs, 105/-

***Home Fires** (19). The broad but pointed petals of these brilliant flowers form a smooth flat background of bright buttercup yellow for the deepish crown of fiery marigold red. Tall and early it is a variety which will be popular for its quality and the extreme brightness of its colouring Each, 3/-; 12 bulbs, 33/-

***Missouri** (17), large well formed buttercup yellow petals of beautiful substance, making an excellent foil for the neat tightly frilled nasturtium orange crown. A finely formed well balanced bloom of outstanding colouring, lasting a long time in good condition.

Each, 2/-; 12 bulbs, 21/-

b***Narvik** (16). A cheerful and superb variety, perfect alike in form, quality and proportion, clean cut rich yellow perianth with a frilled goblet shaped bright orange cup held at right angles. A flower of brilliant colouring and striking contrast 12 bulbs, 14/-; 100 bulbs, 95/-

Paramaribo (17). The erect and broadly overlapping petals of clear broom flower yellow are an excellent background for the crisp vase shaped crown of rich orange, just serrated at the edge. Fine pot plant, fresh looking garden variety. Sunproof. Each, 2/-; 12 bulbs, 21/-



FLEURIMONT 2A

Narcissi (2A)—cont.

Porthilly (14). A very attractive variety of perfect symmetry, large and of beautiful form and quality, having broad, smooth, clear yellow perianth and open frilled cup of an intensely vivid orange red. 12 bulbs, **13/6**; 100 bulbs, **90/-**

Red Goblet (16). Distinct variety of good substance and lasting quality. The broad rounded perianth is dark yellow with a faint flush of cinnamon radiating from the base of the petals. This flower has a most unusual goblet shaped cup of solid orange red. 12 bulbs, **16/6**; 100 bulbs, **110/-**

Red Rascal (17), rich yellow perianth of great intensity, good form and substance, straight cup with a prettily fluted edge, deep orange red right down to the base. A very free flowering garden plant, good colour which is retained to the end.

12 bulbs, **17/6**;
100 bulbs, **120/-**

bRouge (16). Prolific vari-

ety, small flower, markedly pointed perianth with an apricot flush over the cinnamon cream petals, short cup of a definite burnt copper shade. For table decoration and floral arrangements .. 12 bulbs, **15/6**; 100 bulbs, **105/-**

bRustom Pasha (18). Softly textured clear yellow perianth, rather long crown opening tangerine and developing to vivid orange with a defined ribbon of gold at brim. A superb variety with splendid colour for indoor cultivation; fine garden plant, sunproof.

12 bulbs, **14/6**; 100 bulbs, **100/-**

bScarlet Elegance (16). A very striking variety of great brilliancy and fine substance, perianth, trollius yellow, cup of an intense flaming orange red. The feature of this variety is the wonderful contrast in colour, and it loses nothing of its beauty when forced by the middle of February. Well suited for all purposes.

Extra large bulbs .. 12 bulbs, **13/6**; 100 bulbs, **90/-**

Selected quality .. 12 bulbs, **10/6**; 100 bulbs, **70/-**

***Spelter (16).** An outstanding variety, exceptionally deep golden yellow perianth with rounded well overlapping petals, large expanded beautifully fluted crown of intense persimmon orange. Strong grower, showy and very free flowering .. Each, **6/-**; 12 bulbs, **65/-**

***Sun Chariot (17).** The broad flat rather pointed perianth is deep golden yellow, and the well proportioned goblet shaped cup solid glowing orange red. The flower is sunproof and has remarkable lasting qualities. A fine strong plant, exceptionally lovely variety of very great merit .. Each, **3/-**; 12 bulbs, **33/-**

Tinker (21), charming flower with a sunny disposition, broad clear yellow perianth and goblet shaped, intensely vivid orange cup. Outside it grows robust and produces a tall and vigorous plant, rapid increaser. Keeps its colour well in the sun.

Extra large bulbs .. 12 bulbs, **15/6**; 100 bulbs, **105/-**

British grown, first size .. 12 bulbs, **12/-**; 100 bulbs, **80/-**

aValiant Spark (24), an early garden variety of outstanding vigour and colouring, extremely useful in dark corners where it almost glows with the intensity of the celandine yellow petals and the deep slightly fluted crown of bright tangerine orange. Ideal for indoor cultivation.

Regret not available this season.

ROUGE 2A



Narcissi (2A)—concluded

***Winnipeg (18).** An extremely clear cut and symmetrical bloom with rounded overlapping petals of mimosa yellow, the large expanded saucer shaped crown is gold with an even band of bright marigold orange, giving a richness and depth of colour which is retained to the end. Fine garden variety.

Each, 3/-; 12 bulbs, 33/-

aYellow Sun (18). A marvellous and immense flower. Clear yellow perianth of enormous size with broadly overlapping shovel pointed segments, it has a golden yellow crown, narrow at the base and opening to a wide, deeply frilled mouth. Extremely lovely early forcer, magnificent garden plant, very free flowering.

12 bulbs, 14/6;

100 bulbs, 100/-

DIVISION 2B

Perianth white, corona coloured

Alex Fleming (15). Crisp white petals of fine texture form a neat flat background to the densely frilled orange centre which softens to apricot deep in the folds. Showy free flowering garden variety, attractive cutflower

BLARNEY'S DAUGHTER 2B

- Each, 2/3; 12 bulbs, 24/-
- *Arbar (17).** Pure white pointed perianth petals of good substance, medium sized saucer shaped crown of bright tangerine orange; it is a large flower of high quality, suitable for exhibition purposes Each, 9/-; 12 bulbs, 95/-
- *Bertha Aten (12).** Solid, circular, closely overlapping pure white perianth of wonderful smoothness and texture, flat expanded crown of vivid orange red. A very striking flower of incomparable finish and extreme loveliness, a garden plant of short, sturdy growth. Late flowering 12 bulbs, 15/6; 100 bulbs, 105/-
- b*Bizerta (16).** A flower of splendid carriage and most unusual colouring, it has beautifully shaped flat pure white perianth segments of thick waxy substance and a perfectly balanced medium sized cup of soft honey amber, delicately frilled at the edge.
12 bulbs, 18/6; 100 bulbs, 130/-
- *Blarney's Daughter (17).** This very lovely variety has inherited all the virtues of BLARNEY (3b) which is its seed parent; the perianth is pure white, of lovely quality and rich thick texture, the cup is soft orange with a very distinct apricot cream rim. A free flowering and strong garden plant. Sunproof Each, 3/6; 12 bulbs, 38/-
- aBrunswick (20).** Very early and refined flower of superb quality. Overlapping pure white perianth of grand texture, the evenly frilled, well proportioned trumpet shaped crown is lime yellow becoming almost white on maturity 12 bulbs, 16/6; 100 bulbs, 110/-
- *Buncrana (17).** A very lovely flower, its broad pure white petals are shovel shaped surrounding a medium length, prettily frilled cup of a definite peach orange. With its clear colouring and good form it is ideal for exhibition 12 bulbs, 14/-; 100 bulbs, 95/-
- Champagne (15).** A variety of most unusual shading. The broad but pointed petals are ivory white with an ecru rose flush at the mouth of the deep irregularly ruffled crown. Especially attractive as a variety for cutting Each, 2/-; 12 bulbs, 21/-
- Compton Mackenzie (16).** A fine imposing flower with broad white perianth of much substance and a large rather long crown of soft apricot pink, which is yellow on opening and requires a few days to colour up. A decorative bloom of fine texture, charm and distinction, extremely effective planted in the border against shrubs. Each, 2/6; 12 bulbs, 27/-
- Daisy Schaffer (18).** Words cannot describe the beauty of this outstanding variety. Clear waxy white perianth, well overlapping, of refined texture, the trumpet shaped crown, finished by a neat frill, is soft lemon yellow. 12 bulbs, 15/6; 100 bulbs, 105/-



COVERACK PERFECTION 2B

Narcissi (2B)—cont.**Coverack Perfection (17).**

Ivory white star like perianth, the crown is bowl shaped with a wide mouth, cream with a minute ribbon of ochre yellow at the edge, and as the flower ages this takes on a pale coppery tone. A most unusual variety and very decorative. Tall and vigorous grower.

12 bulbs, **16/6**;
100 bulbs, **110/-**

***Daviot (15).** Erect pointed milk white petals and an unusual narrow crown of primrose yellow shaded with orange at the base, but leaving a clear primrose rim at the mouth. The formation is so symmetrical and even and the substance so perfect, this variety has an unusual wax like beauty of its own. It is also suitable for naturalising, once established it produces a great many flowers.

Each, **3/6**;
12 bulbs, **38/-**

Dick Wellband (15). This beautiful variety deserves a place in every garden; large pure white perianth and bold expanded crown of a bright orange flame, which intensifies as the flower ages. Ideal garden

12 bulbs, **12/6**; 100 bulbs, **85/-**

plant, good naturaliser 12 bulbs, **12/6**; 100 bulbs, **85/-**
Dolly Mollinger (PAPILLON) (18), broad rounded petals of milk white with much ruffled almost double crown of creamy orange. A dainty looking variety which will be greatly appreciated as a cut flower or a potplant Each, **15/-**

Duke of Windsor (18). Very large flowered variety with a perfect circular outline. The perianth segments are rounded and well overlapping, pure white, the very large flat ruffled crown is a soft creamy marigold with a slightly paler tone at the rim. Exceptionally showy in the garden, long lasting blooms either on the plant or cut. Ideal for large plantings and naturalising, it produces a multitude of fine blooms 12 bulbs, **14/6**; 100 bulbs, **100/-**

bEddy Canzony (17), round smooth overlapping white perianth and large, flat widely expanded crown of bright orange merging to gold at the base. Clean flower of contrasting colour, producing an early and lovely picture in the garden; may be successfully grown as a pot plant. Striking cutflower early in the season Each, **2/-**; 12 bulbs, **21/-**

***Fermoy (17).** Very large, pure white perianth of great substance and well proportioned beautifully fluted bowl shaped crown, bright orange red at the mouth shading to gold in the base. A magnificent flower of great size and fine quality. Vigorous plant. Each, **2/-**; 12 bulbs, **21/-**

Flamenco (17). A large flower with round, flat, overlapping, creamy white perianth, the widely expanded crown is deep orange and does not lose its colour in the sun. A flower of great substance and quality, well poised on a strong stem, makes a lovely pot plant.

12 bulbs, **14/-**; 100 bulbs, **95/-**

bFlower Record (15). Strikingly effective on account of its record number of quality flowers. Very broad snow white perianth of great substance, the saucer shaped shallow crown is golden yellow with a sharply defined orange red band. Perfect pot plant, lovely cutflower.

Extra large bulbs 12 bulbs, **12/-**; 100 bulbs, **80/-**

British grown, first size 12 bulbs, **9/6**; 100 bulbs, **65/-**

George Sand (18). Gay and effective variety, the rounded milk white petals show up the much frilled open crown of bright marigold orange, gold at centre. An outstanding flower of excellent substance, perfect free flowering garden plant Each, **15/-**



DELIBES 2A



Narcissi (2B)—cont.

***Green Island (17)**. A wonderful flower of large size and smooth texture. Rounded, almost circular white perianth, well proportioned shallow bowl shaped frilled cup, greenish white at the base inside, passing to white, which in turn passes to a band of cool citrus yellow at the margin. Short necked and a tall strong stem.

Each, 5/6; 12 bulbs, 60/-

***Greeting (17)**. A first class variety, excellent form and clear colouring, a model of perfection with its shovel pointed wax-like perianth of purest white which is very slightly reflexing around the shallow cone shaped crown of a definite citrus yellow.

Each, 3/6; 12 bulbs, 38/-

bHigh Life (17). A flower of perfect form and immense size, strikingly handsome with its broad cream perianth and enormous shallow crown of peach apricot which is attractively frilled at the edge. Highly recommended, it will be appreciated by the connoisseur.

Each, 2/6; 12 bulbs, 27/-



GREEN ISLAND 2B

***Irish Minstrel (18)**, a very fine large flower with very broad flat pure white perianth of thick waxy substance, the large expanded cup of bright clear deep yellow is beautifully frilled at the mouth, flower takes a little time to develop as the petals open yellowish. A most pleasing variety, it has blooms which are most attractive Each, 27/6

bJacinta Marto (18). An improved JOHN EVELYN. Pure white perianth of rounded petals, the crown is golden with a tinge of pale tangerine, deeply frilled edge. A beautiful flower of perfect carriage and great substance. Magnificent variety for pots and for the garden. Extremely free flowering 12 bulbs, 13/6; 100 bulbs, 90/-

bJohn Evelyn (15). This is one of those charming flowers of serene and perfect loveliness which fill one with delight. Snow white perianth, very large open expanded crown of primrose cream, beautifully frilled to the base. Altogether a variety of the highest merit. Exceptionally free flowering, good naturaliser.

Extra large bulbs 12 bulbs, 12/6; 100 bulbs, 85/-

Selected quality 12 bulbs, 10/-; 100 bulbs, 70/-

***Kilcoran (17)**. A fine flower of outstanding quality. The broad petalled milk white perianth shows up the flat expanded crown of gold at the centre passing through orange yellow to a broad band of rich carrot orange at the ruffled edge. A distinct variety of exceptional charm, grace and refinement Each, 3/-; 12 bulbs, 33/-

***Kilworth (20)**, elegantly shaped variety, large flower with broad white perianth and perfectly proportioned bowl shaped crown of intensely vivid orange red with a touch of dark green in the eye, sunproof. Tall stem and vigorous plant. Late. 12 bulbs, 15/6; 100 bulbs, 105/-

bLeeuwenhorst (16). A very strong symmetrical flower, perianth rounded, green cream becoming white on maturity, medium short cup of a soft golden yellow with an apricot orange frill; beautiful for indoor cultivation, or as a cutflower. 12 bulbs, 12/-; 100 bulbs, 80/-

Lemon Beauty (PAPILLON) (18), a most attractive seedling from PAPILLON BLANCHE, it is similar in colour and outline except for a bold deep primrose line on each centre petal. These lovely scented flowers will prove most popular for use in floral arrangements.

Each, 7/6; 12 bulbs, 82/-



POLINDRA 2B

Narcissi (2B)—cont.

Louise de Coligny (18). Upright lively flowers with an almost fly away effect. The broad but pointed ivory petals tip back from the gently fluted even trumpet which is ivory at the base becoming a lovely shade of peach rose at the frill. Produces an abundance of flowers with a strong sweet scent. Each, **1/9**; 12 bulbs, **18/6**

Mrs. R. O. Backhouse (THE PINK DAFFODIL) (14). This famous flower of delicate distinction is most unusual and charming in colour; ivory white perianth, slim, long trumpet of pale apricot, deepening in colour towards the mouth. Excellent for naturalising.

12 bulbs, **15/6**;

100 bulbs, **105/-**

Oswega (17). These delicately lovely flowers are a beautiful colour combination, ivory rounded petals make an evenly overlapping perianth; vase shaped crown of a delightful citrus gold at the base deepening to shining yellow at the evenly fluted mouth. Each bloom is a picture on its own. Each, **1/9**;

12 bulbs, **18/6**

Papillon Blanche (16). Ivory white erect petals forming an even background for the crown which appears as a slightly crinkled but complete six petalled flower with ochre primrose shading down the folds. Most dainty and unusual, scented. 12 bulbs, **16/6**; 100 bulbs, **110/-**

Patriarch (19). Decorative variety of fresh colours, flat, well overlapping pure white perianth, the large shallow corona of tangerine flushed with apricot is beautifully frilled. Lovely flower of perfect carriage on a tall stem. Extremely attractive garden plant, fine cutflower. 12 bulbs, **14/-**; 100 bulbs, **95/-**

Pink Fancy (14). The milk white rounded petals show up the unusual and dainty shading of the fluted crown which is soft ochre flushed copper rose at the rim and softening to gold towards the base. Free flowering. Each, **2/-**; 12 bulbs, **21/-**

***Polindra (17).** Large and tall, of beautiful form and quality, having a very broad and flat, pure white perianth of exceptional substance and a large clear yellow crown, slightly serrated at the mouth. A flower most beautiful for its fine proportions and perfect carriage, withstanding all weathers Each, **1/6**; 12 bulbs, **16/6**; 100 bulbs, **110/-**

***Pontresina (16).** This is a most exquisite flower of great beauty, fine texture and proportion; it has a very round pure white perianth of grand quality and substance, the large almost flat crown is uniform pale primrose, prettily serrated at the edge. Fine strong plant. Each, **25/-**

Professor Einstein (17). These beautifully formed flowers are outstanding for the perfect symmetry of their rounded petals and the dazzling contrast of frost white to the vivid orange of the neat but large, almost flat crown just fluted at edges. A most regular and compact bloom. Lovely potplant, responds well to early forcing Each, **12/6**

Roseate Hues (15). This very striking variety of trumpet form is most decorative. The ivory perianth is flat and has rounded segments, the cup is mainly primrose, deeper towards the base, the smoothly waved mouth is rimmed with salmon rose. A very distinct and splendid show or garden variety Each, **3/6**; 12 bulbs, **38/-**

Rose of Tralee (13). Broad but pointed ivory white petals, forming a beautifully regular and erect perianth which with the evenly delicate salmon rose trumpet is a perfect combination. As delightful as its name implies Each, **3/-**; 12 bulbs, **33/-**

Narcissi (2B)—continued

***Roseworthy** (10), most attractive and striking flower, the pure white perianth is broad flat and of good substance, the bright rosy pink colour of the cup extends right down to the base, it is well proportioned, beautifully frilled and expanded at the mouth. This is an excellent decorative Narcissus where a low growing variety is required.

Each, 7/-; 12 bulbs, 75/-

Rosy Sunrise (20). Large flower of good substance, broad overlapping white petals; slender ochre cream cup opening to a gay ruffle of apricot rose with the colour following the undulations round the mouth in an unusual manner. Each, 1/9;

12 bulbs, 18/6

***Salmon Trout** (15). One of the most outstanding varieties, a flower of almost faultless form. The pure white perianth segments are very broad, shovel pointed, flat and of smooth texture; the large cup is distinct salmon pink, beautifully flanged and rolled at the mouth. Like most pinks

this flower requires two or three days to develop its proper colour, on first opening there is a definite yellow tone in the cup. The grace, colour and delightful character of **SALMON TROUT** provides a most charming foil for many shrubs Each, 20/-

Selma Lagerlof (17). A perfect flower of singular beauty and exceptionally fine texture. Broad, smooth, pure white perianth segments, very large saucer crown of creamy yellow with light orange band, nicely frilled at margin. Well suited for pot work, lovely in the garden, good naturaliser 12 bulbs, 14/-; 100 bulbs, 95/-

Semper Avanti (16). Very large flower of distinct character with broad shovel pointed creamy white perianth and a beautifully proportioned fluted crown of bright orange. It is well poised on a strong stem, an ideal garden plant lasting long in perfect condition, suitable for exposed positions. By far the best Narcissus for naturalisation.

12 bulbs, 14/-; 100 bulbs, 95/-

***Signal Light** (18). A striking and distinct variety, smooth flat perianth of strong substance with broad rounded overlapping petals and a large expanded crown of marigold orange which is slightly frilled. A fine free flowering garden plant, stands the sun well.

Each, 5/-; 12 bulbs, 55/-

Smiling Queen (17). A grand flower of most distinct character, having very broad pure white perianth and large gracefully frilled golden orange crown. Extremely lovely variety, fine garden plant, producing an amazing number of flowers, suitable for indoor cultivation.

12 bulbs, 12/6; 100 bulbs, 85/-

Spencer Tracy (18). Rounded broadly overlapping snow white perianth and flat crown of a lovely warm orange, superbly frilled, colour deepening at margin. Ideal flower of serene loveliness; well suited for indoor cultivation, being a splendid forcer and a garden plant of striking beauty 12 bulbs, 13/6; 100 bulbs, 90/-

***Sweet Memory** (17). A dainty and elegant variety, broad rounded petals of milk white make a background to the large almost flat crown of creamy white tinted ochre yellow and slightly fluted at the deeply flanged mouth. **SWEET MEMORY** is a really lovely flower, a sheer joy to grow Each, 12/6

Sylvester (PAPILLON) (17). An unusual and effective flower, the perianth is milk white while the divided and uneven crown is milk white and flame, alternating from the base. Attractive cutflower, good garden plant Each, 5/6; 12 bulbs, 60/-



SIGNAL LIGHT 2B



CHUNGKING 3A

Narcissi (2B)—concluded

***Tudor Minstrel (18).** A superb variety which stands out in any collection. The large flowers are over five inches across, with the milk white pointed but broad perianth petals perfectly erect behind the large smooth cup of lovely ochre gold. Fine, tall vigorous plant, free flowering.
Each, 6/-; 12 bulbs, 65/-

DIVISION 2C

Perianth white, corona white

***Brookfield (15),** a beautiful quality bloom of smooth texture and thick waxy substance; the large well proportioned cup is cream passing to white and stands at right angles to the pure white broad flat perianth.

Each, 15/-

bCastella (16). A flower of great beauty, overlapping cream perianth, short wide crown of pastel lemon becoming rich cream on maturity, marked green eye in the

centre enhances its simplicity 12 bulbs, 14/-; 100 bulbs, 95/-

***Ludlow (18).** Undoubtedly one of the finest varieties, a perfect show flower of moderate size and faultless form having a broad flat perianth of solid texture which stands at right angles to the well proportioned trumpet shaped crown. The flower is purest snow white throughout. A very lovely flower of incomparable finish 12 bulbs, 16/6; 100 bulbs, 110/-

***Silver Lining (14).** Perfectly lovely flower of remarkably high quality. Broad, smooth snow white perianth of great substance and trumpet shaped crown of the palest cinnamon radiating from the base, except for the brim which has a creamy white frill. Short neck and strong stem. A variety of unequalled beauty Each, 2/-; 12 bulbs, 21/-

***Vahsel Bay (15).** A fine large pure white flower with broad flat pointed petals of splendid substance and a large cup nicely frilled and expanded at the mouth; strong grower, ideal garden plant, lovely cutflower Each, 6/-; 12 bulbs, 65/-

DIVISION 2D

Reversed bicolour

***Binkie (15).** A reversed bicolour, curious but most distinct and very beautiful, of good form and quality, on opening the whole flower is pale clear sulphur lemon, but the crown gradually passes to almost white Each, 1/9; 12 bulbs, 18/6; 100 bulbs, 130/-

DIVISION 3A

Perianth coloured, corona coloured

***Chungking (17).** A unique variety of exceptional charm; magnificent tall stemmed flower of fine quality, completely circular clear golden perianth and perfectly proportioned, intense orange red shallow crown. A perfect exhibition flower and one that attracts attention wherever seen 12 bulbs, 15/6; 100 bulbs, 105/-

bEdward Buxton (18). Evenly shaped flowers are held erect on tall strong stems. Pale primrose perianth deepening to yellow near the cup, which is light orange with a broad copper orange band round the edge. Early flowering 12 bulbs, 12/-; 100 bulbs, 80/-

DIVISION 3B

Perianth white, corona coloured

***Ballycastle (16).** A most delightful flower with all the dainty charm belonging to this section, the white perianth neatly balances the shallow white crown which is lit with pinkish orange round the rim. Excellent show variety, free flowering Each, 3/6; 12 bulbs, 38/-

Narcissi (3B)—concluded

aBarrett Browning (17), perfectly smooth, rounded white perianth with flat flame crown, neatly ruffled. A variety of beautiful texture, well proportioned, stiff and of upright bearing. Ideal pot plant, free flowering.

Each, 2/3; 12 bulbs, 24/-

***Blarney** (17). One of the most delightful and charming varieties of this section, it has a firm, smooth snow white perianth and a rather flat pale orange crown with a narrow primrose rim. Lovely clean flower, gracefully carried on a tall stem.

Each, 2/-; 12 bulbs, 21/-

***Corofin** (18). A medium sized bloom with pure white, thick textured, waxy petals of great substance, rounded and broadly overlapping, neat canary yellow cup with a sharply defined ribbon edge of bright tangerine orange. Long stems.

Each, 7/-; 12 bulbs, 75/-

bLa Riante (14). Broad pure white perianth and small flat crown of a brilliant orange red, of unique colouring and excellent poise. Ideal for growing in bowls, but not before February and not over 50 deg.

12 bulbs, 11/-;
100 bulbs, 75/-



LUDLOW 2C

***Matapan** (16). This variety is a really lovely show flower of fine quality and finish, it has a smooth rounded perianth of pure white and an intense crimson red flat crown. A plant of ideal habit, the flower carried at right angles on a strong stem well above the upright foliage Each, 6/-; 12 bulbs, 65/-

***Merlin** (17). This is a really beautiful medium sized flower with purest white broad rounded perianth of remarkable quality and a flat crown of pale yellow with a narrow sharply defined margin of intense red. A splendid show flower, equally suitable as cutflower or garden plant Each, 21/-

Misty Moon (16). Most attractive, larger than most in this section, having large pure white perianth and large eye with grey white centre, the outer half a halo of soft pale salmon orange; rather late flowering Each, 3/6; 12 bulbs, 38/-

Pomona (16). Medium sized flower of perfect balance, lovely form and high quality. Perianth pure white with neatly shaped petals, short cup of apricot with a tangerine frill. Makes a lovely pot plant, charming cutflower 12 bulbs, 11/-; 100 bulbs, 75/-

Regality (18). Enormous pure white, well overlapping rounded perianth measuring 4 ins. across, the deep yellow expanded crown has a beautifully frilled edge of orange red. Attractive cutflower, showy garden plant Each, 1/9; 12 bulbs, 18/6; 100 bulbs, 130/-

***Rockall** (18). A very large flower for this type with broad overlapping purest white perianth of lovely quality and thick substance, the medium sized saucer shaped crown is brilliant scarlet red nicely serrated at the margin, a wonderful contrast in colour, very tall strong plant. May be described as the highest perfection of the 3b class Each, 110/-

bVerger (17). An outstanding and remarkably beautiful variety. Large white, rounded perianth segments, flatly overlapping and standing at right angles to stem and crown. The small, flat crown is lemon yellow with a narrow border of bright orange. Very striking pot plant, has proved most useful for all purposes 12 bulbs, 11/-; 100 bulbs, 75/-

*Narcissi—continued***DIVISION 3C****Perianth white, corona white**

***Chinese White (14).** This is a large flower of faultless form and quality; very broad, circular pure white perianth of lovely smooth texture and a beautifully proportioned shallow saucer crown, pure white with a faint shade of green in the eye. A strong plant with good stiff stems. A variety of unequalled beauty.

Each, 5/-; 12 bulbs, 55/-

***Cushendall (16).** Very charming small flower of most exquisite quality, broad, smooth circular perianth of purest poeticus white, and a very shallow saucer shaped crown with cream coloured frill, the whole centre being vivid moss green.

Each, 3/-; 12 bulbs, 33/-

***Engadine (16).** A refined and serene flower, the rounded perianth is purest white and beautifully smooth, the flat eye is also pure white with a finely serrated edge and a slight tinge of green in the centre. Exceptionally lovely show flower of good substance, standing at right angles to the stiff stem.

Each, 14/-

Polar Ice (15). An exceptional variety, sparkling frosty white all over; very lovely cutflower for table decoration, pretty in the garden

12 bulbs, 11/-; 100 bulbs, 75/-

planted in groups; one of the latest to bloom

CHINESE WHITE 3C**DIVISION 4****DOUBLE NARCISSI**

albus plenus odoratus (DOUBLE WHITE POETICUS) (14). Pure white, sweetly scented, gardenia like flowers, which last a long time. A charming variety for naturalising in grass, very lovely as a cutflower. For successful culture plant early in rich soil 5 to 6 in. deep. Not suitable for indoor cultivation. Flowering in May 12 bulbs, 12/6; 100 bulbs, 85/-

***Camellia (16).** A grand Daffodil of distinct character, splendid durable texture and refined quality, colour a most lovely soft primrose yellow self. The extremely lovely flowers are carried erect on strong stems; effective garden plant, very charming cutflower. Not suitable for indoor cultivation Each, 1/9; 12 bulbs, 18/6; 100 bulbs, 125/-

***Double Event (17).** A flower of very beautiful and perfect form. The broad petals are symmetrically placed, making a flat rounded head of pure white, neatly finished in the centre with short ruffled petals of delicate lemon yellow Each, 8/6; 12 bulbs, 90/-

***Golden Ducat (18).** A lovely, fully double flower with the broad petals making a six pointed star shaped outline. The colour is pure yellow with no variation. It is a sport from KING ALFRED and has derived its strong stem and constitution Each, 2/-; 12 bulbs, 21/-

Inglescombe (18). A large flower of a uniform primrose colour, a very vigorous grower and one which will always be a pleasure to have as a cutflower. Not recommended for indoor cultivation 12 bulbs, 12/6; 100 bulbs, 85/-

blrene Copeland (14), a most beautiful double flower, the longer petals are creamy white interspersed with shorter ones of apricot, becoming ochre cream. Unique as a cutflower; may be gently forced; excellent garden plant, good naturaliser.

12 bulbs, 12/6; 100 bulbs, 85/-

Narcissi (4)—concluded

Mary Copeland (14).

Most attractive semi double flower, of exquisite beauty. The outer petals creamy white and the centre interspersed with orange red. One of the most brilliantly coloured in this section, for outside planting only.

12 bulbs, 14/-;
100 bulbs, 95/-

bMrs. Wm. Copeland (12).

This is a lovely flower. The pure white perianth makes a good background for the sturdy double centre which is white, interspersed with very pale primrose petals; charming pot plant, good forcer.

12 bulbs, 16/6;
100 bulbs, 110/-

Snowball (SHIRLEY TEMPLE) (12).

Most lovely snowy white flower with broad, beautifully flat, almost circular perianth segments of splendid quality and substance and a gardenia like double centre of singular beauty. Fine shape and proportion; extremely charming cutflower.

12 bulbs, 18/-;
100 bulbs, 125/-

***Swansdown (15).**

A beautiful variety quite distinct from any other, large milk white flower of good substance with very broad overlapping outer segments and a double centre of white feathery looking petals. Strong grower and rapid increaser.

Each, 10/-; 12 bulbs, 110/-

aTexas (17).

Immense flower of very beautiful outline and massive substance with broad petals of cream, gold and tangerine. It is a free bloomer, grows with extreme vigour and is quite early. A first rate pot plant and a very conspicuous Daffodil in the garden in a sheltered, warm position.

Extra large bulbs

12 bulbs, 15/6; 100 bulbs, 105/-

Selected quality

12 bulbs, 12/6; 100 bulbs, 85/-

bVan Sion (syn. TELAMONIUS PLENUS) (13),

large double golden yellow trumpet, the favourite double Daffodil, which may be used for all purposes, for forcing, naturalising and general garden work

12 bulbs, 17/6; 100 bulbs, 120/-

***White Lion (18).**

Exceptionally beautiful white flower of fine substance on a tall strong stem. Broadly overlapping perianth segments behind a fully double creamy white centre, interspersed with smaller petals of soft coppery ochre

Each, 1/9; 12 bulbs, 18/6



IRENE COPELAND (4)

Narcissi—continued

**DIVISION 7
JONQUILS AND HYBRIDS**

If required for indoor cultivation they should be grown in a cold greenhouse or frame and not in the house. This applies to all varieties in this section.

Baby Moon (12). An improvement on the original JONQUIL in so far as its growing habits are concerned. It multiplies by natural increase of the bulbs as well as by seeding; flowers have the same strong scent. 4-5 12 bulbs, **11/-**; 100 bulbs, **75/-**

***Chérie** (14). A most unusual and charming hybrid, perianth ivory white, cup pastel buff; from two to three smallish flowers on a stem, lovely in pots. Very free flowering, lasting long in best condition 12 bulbs, **13/6**; 100 bulbs, **90/-**

Golden Sceptre (17). Handsome flowers of a rich golden yellow, almost a self, one occasionally two sweetly scented blossoms on a strong stem. Very beautiful in bold clumps in the border 12 bulbs, **10/6**; 100 bulbs, **70/-**

Jonquil single (10). This charming variety produces elegant buttercup yellow flowers, deliciously scented, like orange blossom. Very beautiful when grown in pots, they should, however, be allowed to establish themselves under cold glass, and not in the house nor in a warm conservatory 12 bulbs, **5/9**; 100 bulbs, **37/6**

Jonquil double (10). Similar in growth to the SINGLE JONQUIL, but with double flowers. A very dainty variety which is specially valuable for cutting. .. 12 bulbs, **11/6**; 100 bulbs, **78/-**

Lintie (12). Rounded petals of citrus yellow with a neat flat green eyed crown shading through gold to the orange rim form dainty flowers several of which make a graceful scented cluster. Slim strong stems and leaves 12 bulbs, **13/6**; 100 bulbs, **90/-**

Nirvana (11). A delicately scented white Jonquil with several dainty flowers, gracefully poised on a strong but slender stem. Ivory white rounded petals and neat small cream cup with a green eye deep within. Graceful cutflower, delightful pot plant. Each, **2/-**; 12 bulbs, **21/-**

odorus rugulosus (GIANT JONQUIL)

(13). A beautiful large flowered form with three or four butter yellow fragrant flowers on a stem. Splendid for mass planting and for naturalising; ideal for cutting, valuable for pot work if grown cool 12 bulbs, **7/-**; 100 bulbs, **45/-**

odorus rugulosus flore pleno

(DOUBLE GIANT JONQUIL) (13). The double form of the preceding with all its good qualities for general garden purposes. Also very handsome as a pot plant but should be grown cool. 12 bulbs, **8/-**; 100 bulbs, **53/-**

Orange Queen (8). A most attractive and showy variety of self pastel orange colour, two or three flowers of subtle fragrance on an 8 in. stem. Delightful pot plant, but should be grown in a cold greenhouse; very sweet as a cutflower for table decoration.

12 bulbs, **9/-**;
100 bulbs, **60/-**

***Suzy** (15). A much admired hybrid with 2-3 sweetly scented flowers held on a slender graceful stem, deep primrose yellow pointed petals, cone shaped tangerine cup. Delightful, distinctly outstanding in this class; very beautiful in floral arrangements.

Each, **10/6**



CHÉRIE 7

**Kaufmanniana
Rainbow Hybrids
see page 24**

Narcissi (7)—concluded

Trevithian (16). A very beautiful and graceful Jonquil hybrid of unusual colouring with an average of two to three sweetly scented flowers on a stem. The perianth and shallow crown are of a clear grapefruit yellow throughout.

12 bulbs, **10/6**;
100 bulbs, **70/-**

Waterperry (12). One of the most charming of this section, a profusion of small graceful flowers on slender stems; pointed ivory white perianth, the cup is pale buff at the base, shading to pastel salmon apricot at the margin. Exquisite cut-flower, perfect pot plant, most attractive in the border.

12 bulbs, **13/6**;
100 bulbs, **90/-**

DIVISION 8 POETAZ HYBRIDS

*Suitable to grow on pebbles
in water.*

bBridal Crown (17), is a double Poetaz hybrid with 4-5 perfectly formed flowers elegantly borne on a strong stem, the evenly formed individual florets have smooth rounded petals of ivory white interspersed with shorter orange centre petals.

A most attractive bunch Narcissus which is excellent for indoor cultivation and as a cut-flower for decorative purposes, very sweetly scented Each, **1/9**; 12 bulbs, **18/6**

Cheerfulness (16). A double form of the once popular *ELVIRA*; a very showy and decorative variety with 2 or 3 sweetly scented blooms on a strong stem, solid white perianth, and a fully double creamy white centre with yellow shade. May be gently forced after the middle of February 12 bulbs, **11/-**; 100 bulbs, **75/-**

bEarly Splendour (16), makes a fine head of 5 to 7 well shaped flowers on a sturdy stem, perianth pure white and deep orange cup. A very handsome and showy variety for pots and bowls for forcing from the middle of January onwards; splendid garden plant and attractive cutflower, lasting well in water 12 bulbs, **16/6**; 100 bulbs, **110/-**

Geranium (16). A Poetaz hybrid of remarkable beauty, bearing on strong stems heads of 3 to 5 flowers with broad paper white petals of great substance, and a golden orange cup, colour deepening towards edges. A very effective late flowering variety, ideal for the border, being a sturdy vigorous grower. Very attractive as a pot plant, may be brought indoors from the middle of February 12 bulbs, **16/6**; 100 bulbs, **110/-**

***Primrose Beauty (16).** A magnificent primrose yellow sport from *CHEERFULNESS* with all its splendid characteristics, an outstanding and distinct variety with 2 to 3 dainty flowers on a perfect stem. They have a charm of their own and are undoubtedly a very fine double form of the Poetaz division. A strong growing garden variety, also suitable for exposed positions 12 bulbs, **13/6**; 100 bulbs, **90/-**

Romeo (16). A remarkable yellow Poetaz with 3 to 6 flowers, similar in growth to *GERANIUM* but more compact; the neat tangerine cup seems to reflect on the butter yellow rounded perianth segments and slightly deepens the colour. Rather late flowering, lasting long in good condition. May be grown as a potplant for late February forcing.

Each, **2/6**; 12 bulbs, **27/-**

Scarlet Gem (15). Bearing 2 to 3 pretty flowers on a sturdy stem, buff yellow rounded perianth with brilliant orange prettily frilled cup; may be gently forced from the end of January. Very charming decorative Poetaz for pot and bowl culture, most attractive in the garden.

12 bulbs, **16/6**; 100 bulbs, **110/-**

bSt. Agnes (16). One of the most useful Poetaz Narcissi, 2 to 3 flowers to a stem, the perianth is snow white, crown orange red. A beautiful variety of clear colour and perfect habit, ideal for the garden, exceptionally lovely as a pot plant. 12 bulbs, **16/6**; 100 bulbs, **110/-**

Yellow Cheerfulness. See *PRIMROSE BEAUTY*.



ROMEO 8

Narcissi—concluded

**DIVISION 9
POETICUS NARCISSI**

Actaea (17). A most striking and distinctly large flower, measuring over four inches across with very broad, snow white perianth of solid texture, petals well overlapping, canary yellow eye edged fiery red. The largest and most beautiful Poeticus yet raised, the flower is perfect in every respect. Grand garden plant; ideal for forcing in February.

Extra large bulbs 12 bulbs, **11/-**; 100 bulbs, **75/-**

British grown, first size 12 bulbs, **9/-**; 100 bulbs, **60/-**

Old Pheasant's Eye (POETICUS RECURVUS) (14). Pretty flower with reflexed snow white perianth and yellow eye rimmed orange red, well known for its delightful fragrance. For successful culture plant early in rich soil or in virgin pastures. 5 to 6 in. deep. May flowering.

12 bulbs, **10/6**; 100 bulbs, **70/-**

***Queen of Narcissi (3b) (16).** This superb flower is a wonderful achievement, of perfect show form and superfine quality. Very large and broadly overlapping snow white perianth of mathematical evenness and immense substance, large flat citron eye edged with a boldly defined rim of deep red. A most vigorous grower and profuse bloomer, splendid garden plant 12 bulbs, **14/-**; 100 bulbs, **95/-**

Collections of Daffodils and Narcissi

For Pot and Bowl Culture				For the Garden			
120 in 12 choice forcing varieties			120/-	1,000 in 10 strong varieties			650/-
48 — 12 — — —			54/-	500 — 10 — —			335/-
24 — 6 — — —			27/-	250 — 10 — —			170/-
12 — 4 — — —			14/-	100 — 10 — —			70/-
36 — 6 varieties, <i>British grown</i>			32/-	100 — 5 — —			67/-

**BLOM'S GRAND MIXTURE OF DAFFODILS AND NARCISSI
FOR NATURALISATION**

is made up from all varieties that are especially adaptable for naturalising and will give an abundant and prolonged flowering period, the bulbs increasing from year to year.

25 bulbs, **17/-**; 100 bulbs, **65/-**; 1,000 bulbs, **625/-**

