

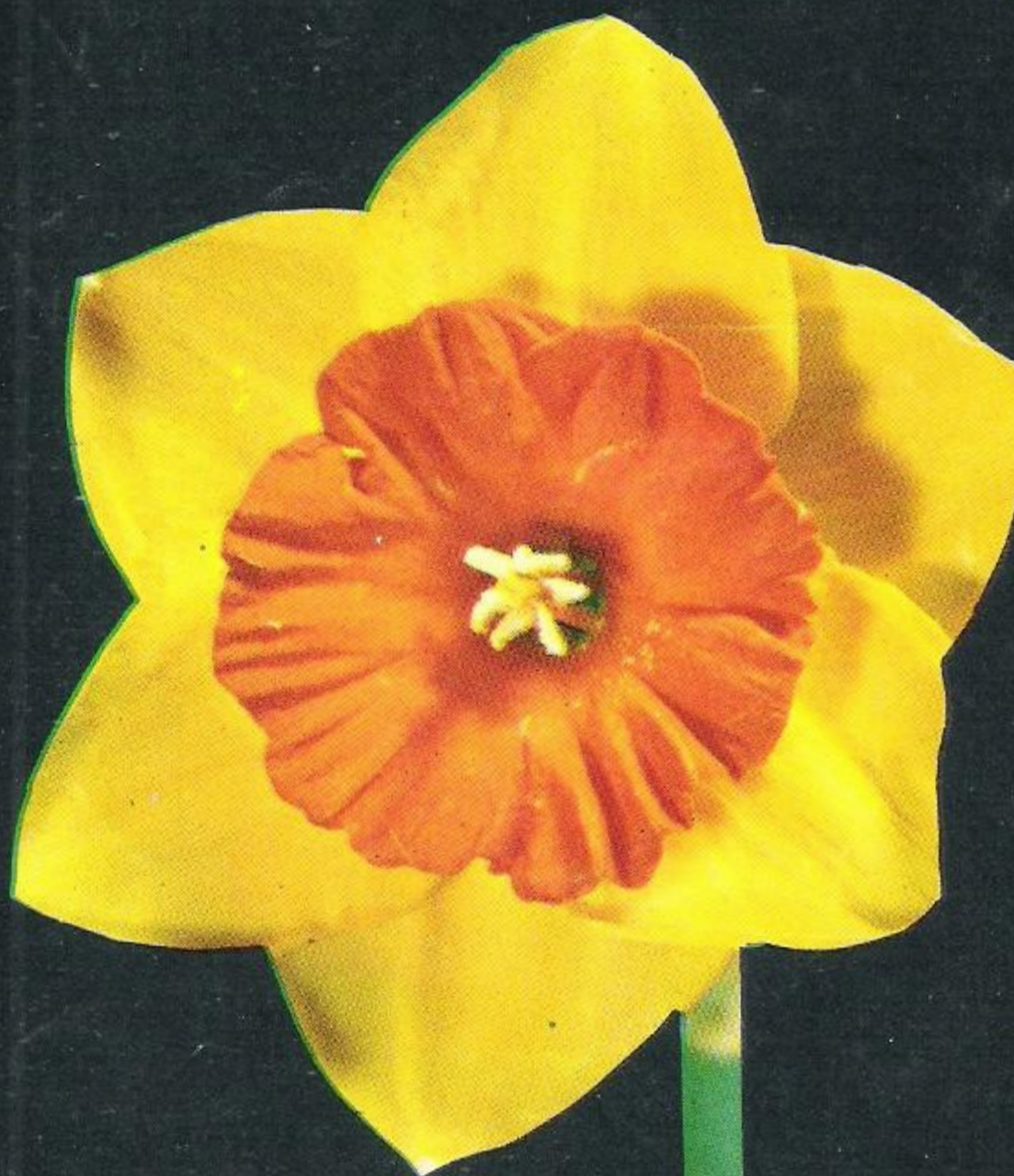
Grant E.  
Mitsch

1957

NOVELTY DAFFODILS

DAFFODIL HAVEN

CANBY, OREGON



LUNAR SEA See Page 5

PARICUTIN See Page 5

COLORATURA See page 4

Our 30<sup>th</sup> Anniversary

# Foreword . . .

We look back on 1956 as being a particularly difficult season; one in which our bulbs did not perform as well nor give the size that is normal for them. We were perhaps too late in sterilizing the bulbs for planting, and the planting was followed almost immediately by an extremely untimely early freeze. As a consequence, we had a very short crop and had to send out smaller bulbs than usual. We anticipate a good recovery of most varieties this year, and as this is being written, we are eagerly anticipating another flowering season. Should the bulbs you purchased last year not have flowered well, if you mention which did not bloom, we will try to make some adjustment with your order this year.

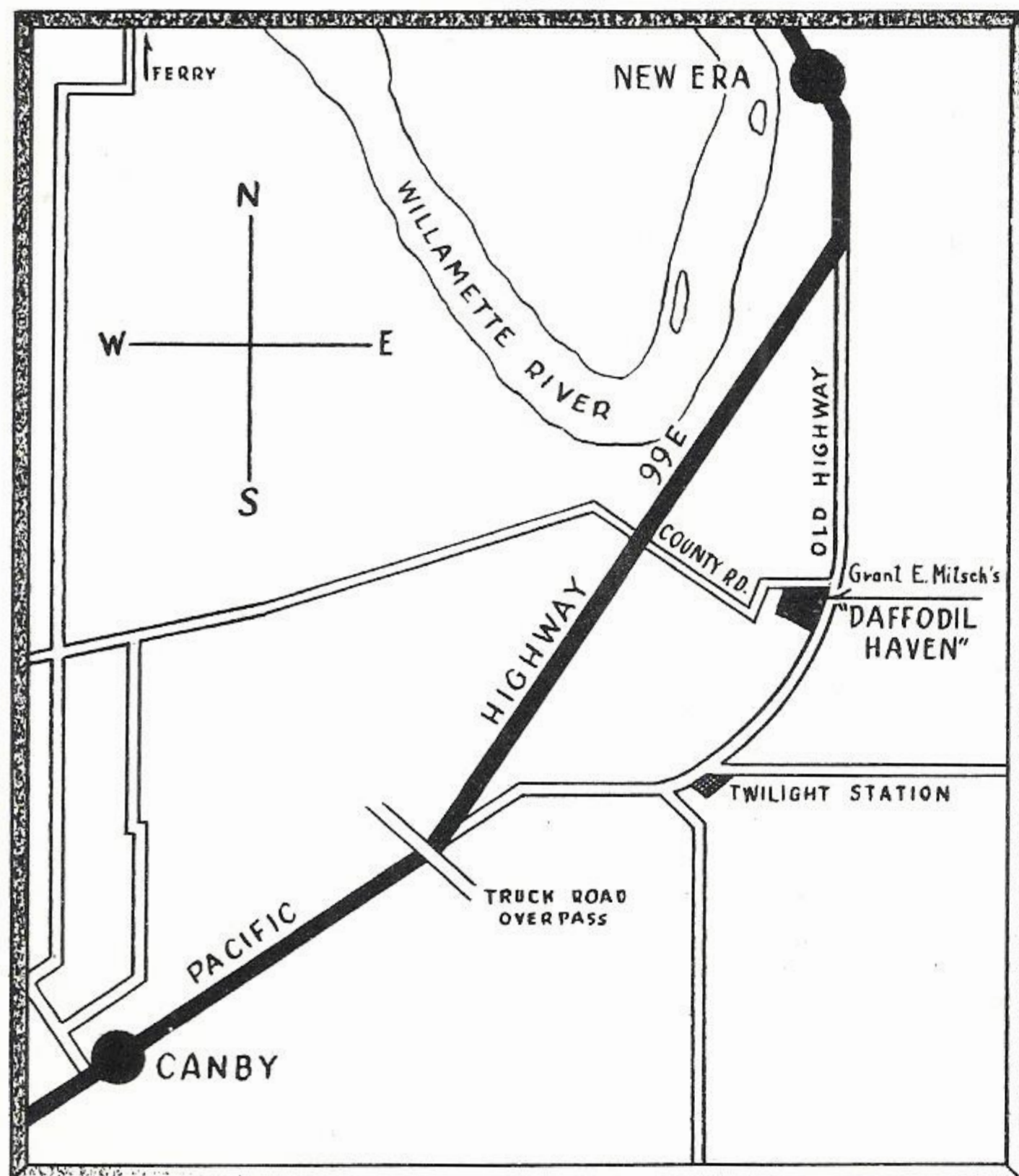
Again we thank our many customers for their kind patronage and letters. Although this marks our thirtieth year in the bulb business, we are just getting well started with our Daffodil breeding program, and we feel that as the years pass, we can make advancements in the quality of our introductions. Those offered this year for the first time are, with two exceptions, pinks, and we believe that in average quality, they perhaps exceed any previous year's offering. Next year we hope to offer more different types of flowers including some of our reverse bi-colors.

Much of the catalog has been rewritten this year and some of it rearranged. Our own introductions are being listed separately for the first time, and a number of varieties not previously listed are being offered for the first time by us. Within the descriptions we have added dates of introduction or registration of most kinds.

Again we invite every one interested in Daffodils to join the American Daffodil Society. Send dues of \$3.00 to Mrs. Wm. A. Bridges, Treasurer, 10 Othoridge Road, Lutherville, Maryland.

## THE AMERICAN DAFFODIL SOCIETY

We believe that most Daffodil fanciers will be interested in the activities of other hobbyists and in reading of their experiences. Moreover, they may have some information to share with those like-minded. We suggest that you join the national society devoted to our favorite flower. At present quarterly bulletins are being issued and a Yearbook is being planned. Send dues of \$3.00 to Mrs. Wm. A. Bridges, Treas., 10 Othoridge Road, Lutherville, Md.



## KEY TO DESCRIPTIONS

Name of variety is given first, followed by the name of the originator in parenthesis. Next is the date of introduction, or date of registration. For our own varieties we are giving the date of first listing, but of many of the others, we could only give date on which the name was registered. Some inaccuracies doubtless occur. The number and letter following indicates the Royal Horticultural Society classification, viz: 1a means yellow trumpet; 2b means large cup, bi-color. Season of bloom is indicated next but this is only approximate: letters EE indicate extra early; E, early; EM, early midseason; M, midseason; LM, late midseason; L, late. Then the approximate height in inches is given. Both flowering season and height must be taken as only approximate relatively.

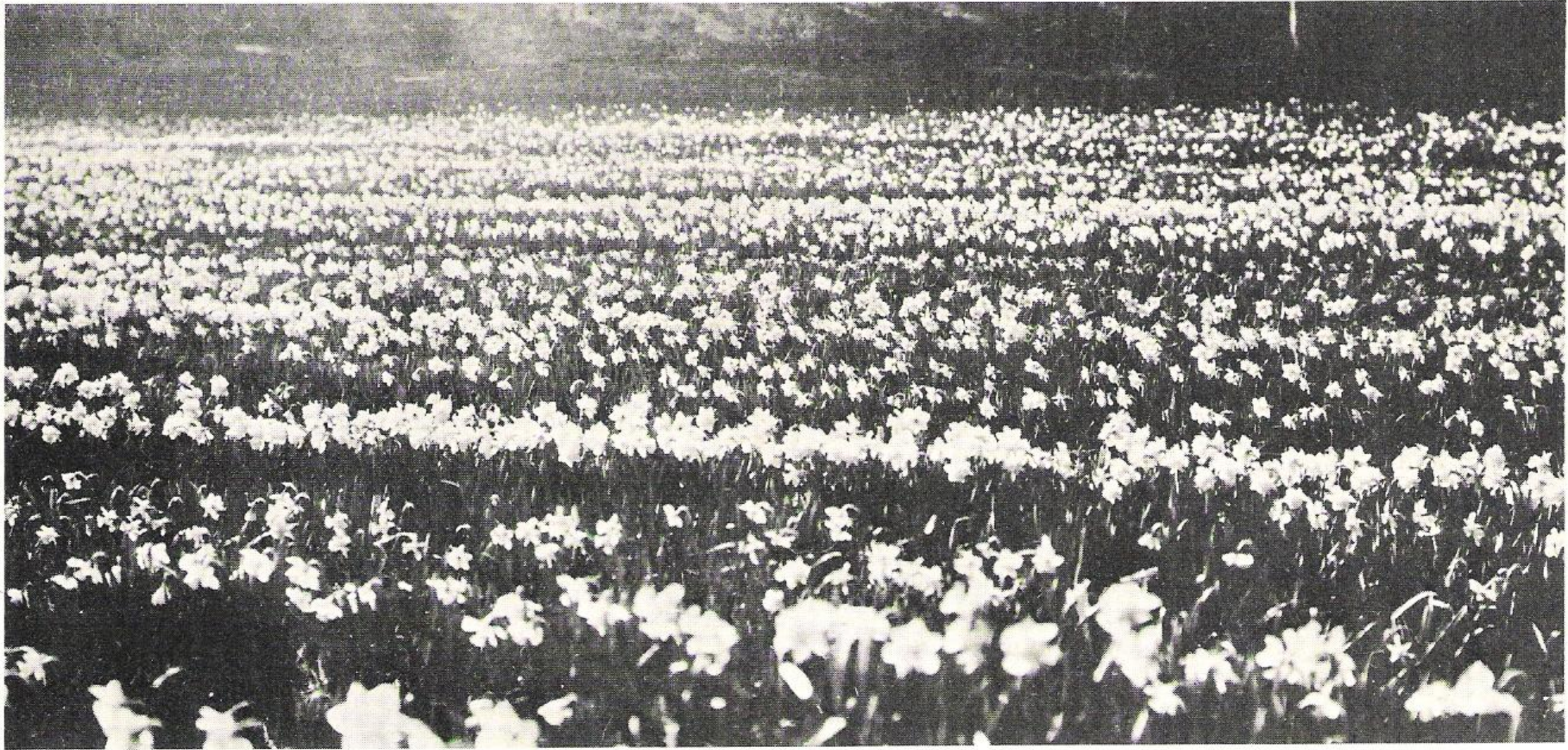
## TERMS

Please send cash with order, or 25% down and the balance before delivery. Prices quoted are prepaid on orders of \$3.50 or more except as noted. On smaller orders add 25c for postage and packing. However, for those willing to pay transportation, we will gladly include extra bulbs valued at more than the estimated cost of shipping. We can send by express collect, or in the case of small orders, send by parcel post and you will remit for postage on receipt of order.

On cash orders of \$10.00 or more received before August 1st, except for collections and bulbs priced per 100, we give about 10% extra in bulbs of our selection. Orders sent later also receive extras but we endeavor to be a bit more generous on the early orders. These premium bulbs may consist of either named varieties or some of our selected numbered or named seedlings, to be chosen at our discretion, and dependent on available stocks.

Prices quoted are for good double nose bulbs except for a few species that normally do not make many bulbs of this type. If sold out of double nose size, we endeavor to give equal or greater value in smaller good blooming sizes. We do not price round bulbs of novelties since we need these for our propagation. Ordinarily we start shipping around the first of September but we advise that you **PLEASE SEND ORDERS BY SEPTEMBER 1ST IF POSSIBLE**. We emphasize early ordering as there is a shortage of some varieties. Give second choice if possible.

Visitors welcome at our gardens during the blooming season except on Sundays, when we are closed.



PARTIAL VIEW OF ONE OF OUR DAFFODIL FIELDS

## 1957 INTRODUCTIONS

**CARO NOME** (Mitsch) 1957. 3b. M. 21". Quite unique and different from any other pink we grow. In form, with its rounded, flat, pure white perianth, and rather small, bowl-shaped crown, it somewhat resembles one of its parents, Glenshane, but instead of the crown being creamy lemon, it varies from apple blossom pink to pale apricot salmon, depending on the season. It takes a day or two after opening to develop its color. We are not sure as to how much color it will have in drier areas, but it has such beautiful form it is quite worth while without color. N50/1 (Green Island x Glenshane). \$20.00 each.

**FROLIC** (Mitsch) 1957. 1b. EM. 19". Good bi-color trumpet Daffodils are not too plentiful, most of the best in quality having little contrast in coloring. Frolic is among the largest of its division, and is of classic form and balance, with widely overlapping but pointed, flat, very white perianth of beautiful texture and good substance; while the trumpet is nicely tapered, to its flaring, nicely ruffled and scalloped mouth, and is of solid, clear, rich lemon yellow. It is a good grower and increaser. (Beersheba x Kandahar) x Kanchenjunga. Bulbs \$5.00 each.

**RIMA** (Mitsch) 1957. 1b. M. 17". A near borderline flower, just on the verge of being a 2b. Very flat, smooth, overlapping, pure white perianth of fine texture, and a flared trumpet of lilac toned pink. A flower of exhibition calibre, being one of the finest we have raised. We look for it to be valuable for breeding and have used it a great deal as has been the case with most of our other 1957 introductions but have yet to see the results. Seeding No. 041/1 (Kenmare x Dawnglow). Only two or three bulbs to spare. \$40.00 each.

**FLAMINGO** (Mitsch) 1957. 2b. M. 18". A fine large flower with velvety smooth, flat, overlapping perianth; and a large but well balanced, flaring crown with quite the richest pink coloring of anything we have seen in a large flower, where the color extends to the base of the crown. It seems to hold its coloring better than most, and is a striking and beautiful thing. Seedling No. 016/1 (Coralie x Dawnglow). Only two or three bulbs to go. \$40.00 each.

**INTERLUDE** (Mitsch) 1957. 2b. M. 17". One of the more consistent performers among the pinks, this is a good sized flower with flat, white perianth of good substance; and has a good sized crown of solid, rich salmon pink, the color developing soon after opening and holding up well. Rather like Salmon Trout in coloring. This is quite distinct from Flamingo, but both are good flowers. Seedling No. AJ16/1 (Tunis x Shadeen). \$15.00 each.

**SPRING SONG** (Mitsch) 1957. 2b. LM. 23". One of the taller pinks, this being a large flower with white, overlapping, flat perianth, and having quite clear pink coloring in the upper half of the crown, the base being white instead of pale yellow as found in most of the pinks. This makes for a cleaner appearing flower. M105/2. This is either from Radiation, or a sister seedling, crossed with Interim. \$15.00 each.

### WHITE SPIRE

**WHITE SENTINEL** (Mitsch) 1957. 2c. M. 24". Very large flower with round, flat, overlapping white perianth; and a large, shallow bowl-shaped, white crown. A larger and sturdier flower and plant than its parent, Chinese White, and the flower poised at a better angle, although not quite so graceful. D. Schaffer x Chinese White). \$5.00 each.

# Our Own...

## INTRODUCTIONS

**ARDOUR** (Mitsch) 1952. 3a. M. 80". An exhibition flower of excellent form and balance from Cheerio x Market Merry. Large flowers with flat, broadly overlapping, smooth perianths of golden yellow; and medium size, saucer shaped crown of intense, deep orange red. Should be picked early to use for exhibition as the edges of the cup may burn otherwise. We feel it is one of the best things we have raised and have had some excellent reports on it. It has produced some good seedlings, among them being Paricutin. \$2.00 each.

**BITHYNIA** (Mitsch) 1955. 2b. LM. 22". Combining some of the good qualities of both its parents (Rubra x Sylvia O'Neill), this was one of the best from the first lot we grew of this interesting cross. Large, flat, well rounded white perianth of good substance, and a flaring, nearly flat, creamy white crown with light apricot margin. A beautiful, well balanced flower for cutting, and should prove good for exhibition. Its pollen gives good seedlings. \$4.00 each.

**BONNEVILLE** (Mitsch) 1953. 2c. EM. 21". For those who wish to grow the largest Daffodils, we suggest this variety, an enormous white flower with many good qualities, having size, substance, carriage, and vigor. Very large flat perianth, up to six inches across, with flaring, trumpet-like crown of pale lemon, fading to milk white. This dwarfs other varieties blooming with it and is quite sensational in the garden or on the show table, although not of good balance or form for an exhibition flower. It usually takes a week or more to develop fully. (Ada Finch x Fortune.) \$4.50 each.

**CASABIANCA** (Mitsch) 1951. 2b. M. 22". Distinct in form, this flower has a spreading white perianth, and rather short, but good sized creamy lemon crown, widely flared and nicely crimped. Sturdy stems make this an attractive garden variety, and its form makes it desirable for cutting. (Tunis x Fortune.) 60c each.

**CHINOOK** (Mitsch) 1951. 2b. EM. 21". Large, flat, milk white perianth, and a very large saucer-shaped crown, which varies from salmon orange to yellow, depending on weather, soil, and stage of development. A striking garden flower, and very showy for cutting. (John Evelyn x Fortune.) 90c each.

**CIBOLA** (Mitsch) 1951. 2a. EE. 22". One of the very first of the large flowered Daffodils to bloom here. Better in form and substance, and richer in color than its seed parent, Malvern Gold. The very flat, broad perianth is of rich deep intense gold; the large widely flaring crown of similar shade, is beautifully crimped. The short necked, stiff stemmed flowers are well faced, and have good keeping qualities. Due to injuries sustained last winter we are withholding stock for increase this year.

**CLACKAMAS** (Mitsch) 1954. 2b. M. 21". A good sized flower with quite flat, overlapping perianth of white, while the flattish, large crown is of lemon, edged pale orange. A beautiful decorative flower. 75c each.

**COLORATURA** (Mitsch) 1956. 3b. LM. 19". Rather intermediate between its parents (Green Island x Chinese White), good form, color, and poise are present here. The flat, rounded, overlapping white perianth serves as an excellent foil for the medium sized flaring cup, which is also white, but with a heavy frill of apricot that is quite as entrancing as the trill of a prima donna. Excellent capabilities on the show bench and in the hands of hybridists seem evident. A lovely flower showing much promise. \$18.00 each.

**CORONADO** (Mitsch) 1953. 2a. M. 20". Perhaps the most unique in color of anything that we have introduced. Fairly large flower with creamy yellow perianth; and very heavily frilled, long buff crown. On being cut, the perianth becomes tawny buff, while the crown is pinkish buff-toned. Totally unlike any other of numerous quite worthless seedlings from the same parentage, Tunis x Mrs. Backhouse. A very good garden flower. \$2.40 each.

**CREAM CUP** (Mitsch) 1945. 2b. EM. 22". A nice large flower of very smooth texture, having a broad overlapping, pure white perianth, and a good sized, well balanced lemon crown, fading to cream. From Beersheba x Killigrew. 25c each.



MOUNT JEFFERSON — Page 5

**ESTRELLITA** (Mitsch) 1952. 6a. EE. 12". From Mite x Malvern Gold came this petite flower of deep lemon gold self, about 2¾ inches in diameter. Very regular, broad, overlapping, but pointed, slightly reflexed perianth, and well balanced crown. Beautiful for cutting. Has yellowish green stems. \$1.00 each.

**FAIRY DREAM** (Mitsch) 1951. 1c. M. 17". Very smooth, symmetrical, clean, pure white flower, with unusually flat, even, overlapping perianth, and rather long, nicely balanced trumpet. Quite consistently near perfect in form. Stock withdrawn for increase.

**FESTIVITY** (Mitsch) 1952. 2b. M. 22". A magnificent, giant flower with very wide spread, broad, smooth, flat, white perianth of beautiful finish, and a rather long, but well balanced, clear yellow crown. Somewhat like Tudor Minstrel but with a longer, less flared cup. Freshly opened blooms tilt downward somewhat for a day or two. We regard this as one of the best flowers we have raised. \$3.25 each.

**FIRE CHIEF** (Mitsch) 1954. 2a. EM. 23". Brilliance in color is characteristic of this variety. With a crown that vies with Krakatoa in size and color, but is more resistant to fading and borne on taller stems, this is a showy garden flower. The rich yellow perianth is not of good form but when the flower comes at its best, it is one of the most showy and brilliant of garden flowers. (Damson x Fortune.) \$1.00 each.

**FLYING SAUCER** (Mitsch) 1955. 2b. EM. 22". Rather like Pinwheel in form but somewhat smoother, and with a white instead of pale yellow perianth. Very large, light yellow, saucer-shaped crown. Quite a spectacular garden flower but lacking in refinement. (John Evelyn x Fortune.) \$1.40 each.

**GOLD CROWN** (Mitsch). 1947. 2b. EM. 20". A very nicely formed, precise appearing flower of medium size, and of marble like smoothness. Clean white, flat perianth, and quite large crown of deep gold. 40c each.

**LATE SUN** (Mitsch) 1953. 1a. LM. 18". This is about the latest blooming of the yellow trumpets we grow. Usually comes with a quite flat, smooth perianth, and the trumpet is long and quite slender, the whole flower being of rich clear yellow. (Aerolite x Sorley Boy.) 70c each.

**LEBANON** (Mitsch) 1956. 2b. LM. 21". As one might expect from its ancestry, this is not one of the smoothest of flowers. The perianth is somewhat like that of Fortune in form but is white in this case. The crown is nearly flat, and of exceptional size, and is embellished with fringes, lacinations, and flutings. A striking garden flower. One who does not care for the John Evelyn type flowers is not likely to care for this. For those who like Linn and Pinwheel, this should have an especial attraction. \$2.50 each.

**LEMON DROPS** (Mitsch) 1951. 5a. M. 16". Very pretty soft lemon flowers of drooping form, often borne three on a stem. A free bloomer and quite good increaser but the demand keeps our stock very small. Only a comparatively few bulbs to offer at \$3.00 each.

**LEMON MERINGUE** (Mitsch) 1955. 1a. EM. 20". As luscious appearing and tempting as the name might imply, this is one of those cool, soft, sulphur lemon flowers that are so much in flavor. Good form and poise, and with smooth even texture. Due to injury to our bulbs a year ago, we have none to offer this year.

**LINN** (Mitsch). 1947. 2b. EM. 22". A grand garden flower with its wide spreading, flat, white perianth, and very large, saucer-shaped crown of apricot yellow. Draws much attention in the field and when exhibited. One of the better ones raised from John Evelyn x Fortune. 90c each.

**LUNA MOTH** (Mitsch). 1954. 1a. EM. 21". An immense flower of shimmering luminescence in a delightful shade of cool sulphur lemon; having a broad, very flat, overlapping perianth, standing at right angles to the long, quite narrow trumpet. Similar in size to Moonstruck but of different form, and entirely distinct in appearance. One of our most lovely seedlings. Stems are not as strong as we would wish. \$12.00 each.

**LUNAR SEA** (Mitsch) 1955. 1d. EM. 21". We have several very good reverse bicolor trumpet seedlings, of which this is one of the finest. Opens as a smooth even sulphur lemon, self colored flower, the trumpet gradually fading, particularly on the inside, until it becomes almost clear white, while the perianth maintains most of its original coloring. Very unique and beautiful. A flower of good form and substance. Entirely distinct from that other grand reverse trumpet, Spellbinder. Another from the King of the North x Content series. Limited stock. \$30.00 each.

**MADRIGAL** (Mitsch) 1956. 2b. LM. 16". (Chinese White x Green Island.) From the reverse cross to that which produced Coloratura, this is a striking, but perhaps more plebian flower. Less refined in form, but with an even more lavish frill. With a perianth so broad as to be unable to completely smooth itself out at times, the immense, very flat crown is pleated, puckered and frilled, and has a great amount of substance. Not very tall on first opening, it soon grows to average height. The golden apricot rim on the crown of this big white flower is an added attraction. \$8.00 each.

**MEADOWLARK** (Mitsch) 1956. 2b. EM. 24". (Tunis x Fortune.) Not particularly striking as an individual flower, this is an excellent garden Daffodil. It is so consistently good in performance year after year and lasts so long in spite of inclement weather, that we have come to love it for its staying qualities. Like its namesake, it does not make a great splurge of color on the scene, but its cheerful appearance and dependability make us think of friends who do not seek the limelight, but are ever ready to befriend without thought of remuneration. After the style of Fortune but with creamy white perianth, and buff yellow crown, shading lighter at the base. \$2.00 each.

**MIRTH** (Mitsch) 1953. 1b. E. 21". Large, flat, milk white, overlapping perianth, and a good sized rich yellow trumpet. A showy, early garden flower. 50c each.

**MOUNT JEFFERSON** (Mitsch) 1956. 1c. EM. 22". A huge white trumpet with a fringed and lacinated border. Tall strong stems bear the very large flowers which have broad, overlapping perianths. Somewhat like Kanchenjunga but much taller, and apparently much more vigorous. Very striking. From Kanchenjunga x Ada Finch. \$8.00 each.

**PARICUTIN** (Mitsch) 1955. 2a. M. 21". There are few, if any, other Daffodils with as striking an appearance in the garden as displayed by this one. A flower of much substance, so much so, that in some seasons one or two petals may be somewhat crimped as was true of its grandparent, Cheerio, but it seems to be improving in this respect. The deep golden yellow perianth is broad and flat, while the very large, almost flat, fiery red crown opens with very brilliant coloring which holds up better than most in sunny weather. Parentage: Klingo x Ardour. \$14.00 each.

**PAUL BUNYAN** (Mitsch) 1951. 1a. EM. 21". From a series of gigantic yellow trumpet seedlings, this was about the best. Not of true show calibre, but of quite good form, having broad, overlapping perianth, and an enormous, bell shaped trumpet, with nicely crimped flange. A bowl of these is very effective for decorating a large room. (Aerolite x Kandahar.) \$1.20 each.

**PINK LACE** (Mitsch) 1954. 2b. LM. 18". Like most pinks, this is not consistent in coloring, but is distinct from most others in the heavily ruffled, lacy, trumpet-like crown, which opens cream lemon and turns to shell pink in two or three days, the color intensity varying with the season. As the flower ages, the color fades out. Wide overlapping white perianth. This gives some very nice seedlings. (Shirley Wyness x Pink a Dell.) \$2.00 each.

**PINWHEEL** (Mitsch) 1952. 2a. M. 22". Because of its enormous, flat saucer-like crown, this draws a great amount of attention from visitors to our gardens. The rounded, overlapping perianth is pale yellow, and the crown of a deeper shade. Neither smooth nor balanced, but it is very showy. Vigorous and prolific. \$1.00 each.

**RADIATION** (Mitsch) 1953. 2b. M. 20". Large, smooth, flat, white perianth, with quite a large, well formed crown which opens creamy buff, and turns to a slightly lilac toned salmon-pink. A flower of good size and quality that has been one of the best in its class. Valuable to breeders. White Sentinel x Mrs. Backhouse.) \$3.00 each.

**ROSE RIBBON** (Mitsch) 1955. 2b. LM. 21". Although not a true pink, this belongs with the pink class. White perianth segments are quite broad and somewhat pointed. The large flaring crown is cream or pale yellow with a broad band of rich salmon rose, or in some seasons, a rosy orange. Has greater carrying power in the garden than most of the pinks. A striking flower, quite different from anything else that we list. (Interim x Mabel Taylor.) \$8.00 each.

**SACAJAWEA** (Mitsch) 1952. 2a. EE. 24". A spritely, graceful, though large, very early flower. Somewhat reminiscent of Whitely Gem in form and color, but about twice its size and earlier in blooming, making it one of the very first to flower of those with red in their coloring. Quite flat but pointed, deep yellow perianth, and a large flaring crown with a distinct band of rich orange red. This should be a commercial cut flower variety when stocks become plentiful. Named for the Indian bird woman who was guide to the Lewis and Clark Expedition. This flower is from Fortune x Kimba. \$2.00 each.

**SANTIAM** (Mitsch) 1947. 2a. EM. 23". Another of the John Evelyn x Fortune progeny, this has a pale yellow perianth which fades to cream, and a crown of yellow with a much frilled and fringed border of orange. Showy. 50c each.

**SEOUL** (Mitsch) 1953. 2a. EM. 22". Somewhat after the style of Hugh Poate but with flatter, more spreading crown, which is pale orange, shading to a little deeper at the margin. A striking and showy flower, and one with much substance. (Damson x Fortune.) \$1.50 each.

**SILVERDALE** (Mitsch) 1945. 1c. EN. 24". Tall, ivory white, large flower of good substance. Long slender trumpet. The broad, overlapping perianth reflexed slightly. Due to the constant demand, our stocks have become so small that we have no bulbs to offer this year.

**WILLAMETTE** (Mitsch) 1954. 2b. EM. 24". A very tall, early midseason Daffodil with large flowers borne on strong stems, having the smoothness of the pollen parent and the stems of the seed parent. Very smooth, polished, clean white perianth, and a good sized, well balanced, clear yellow crown. A nicely proportioned flower suitable for cutting, garden display, or exhibition. Blooms last well in the field. A rapid increaser. (Tunis x Mitylene.) 75c each; \$7.00 per dozen.

**YELLOW WARBLER** (Mitsch) 1954. 5a. EM. 14". Similar to Lemon Drops and from the same cross, this being perhaps slightly paler in color and a little earlier in bloom. Usually two or three light yellow drooping blooms on each stem. Prolific of bloom and increase but we are sold out for this season.

**ZEST** (Mitsch) 1951. 1b. EM. 24". A sister seedling to Silverdale. Very vigorous and prolific, making many blooms on long, strong stems, with quite flat, overlapping, white perianths, and pale yellow trumpet fading to cream. A good garden flower. 40c each.

# Oregon Grown NOVELTY DAFFODILS

**ACTAEA** (Lubbe) 1927. 9. M. 20". Perhaps the largest of the true poeticus varieties. White perianth with red bordered eye. 3 for 50c; \$1.75 per dozen.

**ADA FINCH** (de Graaff) 1927. 1c. E. 22". Large flowers with wide overlapping perianth, and a huge flaring, heavily frilled trumpet that opens lemon but fades to ivory. Among the most conspicuous early flowers. 35c each.

**ALBERNI BEAUTY** (Hilton) 1930. 3c. L. 24". Gaily poised as butterflies, the pure white flowers with recurved petal edges, and small frilly lemon crowns are airily held on very tall stems, as they proclaim the end of the Daffodil season. Produces very pretty seedlings. 45c each.

**ALAMEIN** (Richardson) 1944. 2a. M. 20". A flower of very high quality, having beautiful smooth, broad, flat, clear yellow perianth segments, and a medium sized cup of intense deep orange red, with a nicely frilled margin. \$1.40 each.

**ALTYRE** (Brodie) 1950. 3c. LM. 22". A very large pure white flower from Nelly x Chinese White. This has much of the form of Chinese White although not so precise. \$2.50 each.

**ANGELINE** (A. M. Wilson) 1937. 3b. M. 21". Earlier than most of its type, this is a delightfully dainty flower for cutting. A rapid increaser and free bloomer. Pure white perianth, and citron white cup with a distinctive narrow golden frill. 3 for 50c; \$1.80 per dozen.

**APRIL TEARS** (Alec Gray) 1939. 5a. M. 9". A delightful elfin flower with two or three exquisitely formed pendant lemon blossoms on a stem. One of the loveliest of all the miniatures and in great demand. \$1.00 each.

**ARANJUEZ** (Warnaar) 1933. 2a. M. 18". A beautifully formed flower with much rounded, overlapping, yellow perianth segments, and a rather large, flattish, bowl shaped crown, having a broad band of orange red at the margin. 35c each.

**ARDCLINIS** (G. L. Wilson) 1934. 1c. M. 19". A very smooth finished flower of excellent quality. 70c each.

**ARDOUR**, see page 4.

**ARMADA** (G. L. Wilson) 1938. 2a. E. 20". A sensational giant early flower. Rich golden yellow, flat, overlapping perianth, with a large, bold crown which opens golden orange and gradually deepens to tangerine red. Holds its color well. Only a few to spare. \$6.00 each.

**ARNOLD NEALE** (Brown) 1956. 1b. EM. 19". A good quality bi-color trumpet. Smooth finish in both the white perianth, and rather narrow lemon trumpet. Appears to make rather better bulbs than most in its class. 25c each.

**ARTIST'S MODEL** (Lewis) 1939. 3b. L. 17". Very unique is this flower, whose color is slightly reminiscent of that of Blarney, the broad smooth, widely overlapping perianth being white, while the large apricot orange crown has the unusual feature of veing very flat except for the edges, which reflex to touch the perianth. A very striking flower, indeed! Small stock of this as yet. \$8.00 each.

**AUTOWIN** (Lewis) 1955. 3b. L. 18". Well grown specimens of this are truly striking, and should prove nearly unbeatable on the show bench. Large, rounded, flat, pure white perianth, with a saucer shaped crown of clear yellow, edged with an exquisite orange red frill. Unfortunately, this does not seem to be a very good increaser thus far. \$10.00 each.

**BAHRAM** (Richardson) 1935. 2a. EM. 20". A large flower of attractive form, having broad, smooth, overlapping perianth of brilliant yellow, and a medium sized crown of vivid orange red. This is particularly good when opening slowly in cool damp weather. Regarded very highly in England where it has received the F.C.C. 35c each; 3 for \$1.00.

**BALLYCASTLE** (Dunlop) 1947. 3b. M. 20". A flower of similar type to Tinsel but larger and taller. Rounded, smooth, white perianth with orange gold rimmed crown. Very few bulbs at \$4.00 each.

**BALLYFERIS** (Richardson) 1930. 1b. LM. 19". A large flower of good quality, having smooth flat perianth, and a soft lemon trumpet of nice proportions. 40c each.



DAUGHTERS EILEEN AND ELISE IN ONE OF OUR DAFFODIL FIELDS

**BALMORAL** (Brodie) 1935. 2a. M. 20". Among the most pleasingly formed of the yellows. Beautiful smooth finish, and rich even intense coloring. For one who could not afford Galway, we would suggest this one. 30c each.

**BAMBI** (Dutch) 1948. 1b. EE. 8". Earliness is the chief recommendation of this one rather than quality, it often being the very first to open in the field. 50c each.

**BANTRY** (Richardson) 1938. 3b. LM. 20". A most attractive medium sized flower, having a well formed, pure white perianth, and a flat crown of yellow, sharply edged orange red. Excellent. 40c each.

**BEEBOP** (Alec Gray) 1949. 7b. L. 17". Small light yellow with an almost flat crown. A perfectly formed little flower descended from *N. juncifolius rupicola*. 75c each.

**BEERSHEBA** (Engleheart) 1923. 1c. EM. 17". One of the older varieties of those we list, but still one of the most popular. It remains one of the finest of the white trumpets, and had it a taller, more upright stem, we could ask little more of it. It has a pointed, but overlapping white perianth of good substance, and a distinctive, long, narrow trumpet. Somewhat dirty white on first opening, but soon develops to a clean white. 30c each; \$3.00 per dozen.

**BENGHAZI** (Richardson) 1941. 2a. M. 20". Rounded, flat, rich yellow perianth, and rather flat crown, banded orange red, fading to gold in the center. 50c each.

**BEN HUR** (de Graaff) 1927. 1a. EM. 18". One of the larger yellow trumpet Daffodils, this has a flat perianth, and a large, flaring, frilled trumpet. 30c each; 3 for 80c.

**BERYL** (Williams) 1907. 6b. EM. 12". While an old variety, this remains quite unique in its class. A lovely little flower; reflexing yellow perianth which fades to cream, and orange cup, fading to gold. 40c each.

**BINKIE** (Wolfhagen) 1938. 2d. M. 21". A curious and most distinct, and yet withal, an attractive flower. Broad, flat, pointed, overlapping perianth, with a well balanced, medium sized lemon crown. Opens an attractive cool, greenish sulphur lemon color, the inside of the crown fading to almost white. A beautiful cut flower. This has given us some of our most attractive seedlings. \$1.75 each.

**BITHYNIA**, see page 4.

**BIZERTA** (Richardson) 1943. 2b. EM. 18". Rather like Polindra in form, this has a flat, smooth, white perianth, and good sized crown of yellow, somewhat tinged apricot. Heavy substance. 40c each.

**BLARNEY** (Richardson) 1935. 3b. LM. 21". A very lovely flower with satin smooth, pure white perianth, very precisely modeled; and a small, nearly flat, pale salmon orange crown. Withdrawn for increase.

**BLARNEY'S DAUGHTER** (Richardson) 1948. 2b. LM. 21". Very flat, pure white, silken smooth perianth, with medium sized flaring crown of apricot orange, with a narrow gold rim. Another very lovely flower. \$14.00 each.

**BLINKBONNY** (Brodie) 1933. 3b. L. 19". Medium sized flower of very brilliant coloring. White perianth with cherry red crown. 50c each.

**BOBBY SOXER** (Alec Gray) 1949. 7b. LM. 8". A small, light yellow flower, with a nice flat perianth, and good sized, nearly flat crown of orange. Very pretty. 75c each.

**BODILLY** (P. D. Williams) 1925. 2b. M. 22". Tall, strong stemmed, and with fine large flowers of splendid form and texture. One of the most striking bi-color Daffodils that we raise. Pure white, flat, overlapping perianth of good substance, and bright deep lemon, well frilled crown. Very prolific and vigorous. One of our favorite Daffodils. An excellent garden flower. 25c each; \$2.50 per dozen.

**BOMBAY** (Richardson) 1945. 2a. LM. 21". Smooth, clear yellow perianth, and rather straight cup of the same color but for a frill of red. A good exhibition flower. \$1.50 each.

**BONNEVILLE**, see page 4.

**BRAMBLING** (Richardson) 1942. 3b. L. 18". A very nicely formed, and smooth textured flower, having broad, white perianth, and a nice cup with a red edge, shading through orange and citron to a green eye. A stylish and attractive flower. 75c each.

**BRAVURA** (G. L. Wilson) 1937. 3b. L. 20". Beautiful pure white perianth of smooth finish with somewhat waved edges, and a well balanced, deep vivid orange scarlet crown. One of the best in its class. \$1.20 each.

**BROUGHSHANE** (G. L. Wilson) 1938. 1c. LM. 25". Perhaps the most striking of the later blooming white trumpets. Massive blooms borne on very tall stems. Very broad, smooth, overlapping perianth, and a large bell mouthed trumpet. At one time listed at \$250.00 per bulb. \$4.00 each.

**BRUNSWICK** (P. D. Williams) 1931. 2b. E. 22". Although one of the first to bloom, this frequently lasts until some later things are past their prime. A flower of lovely form, whose stiff stems hold the flowers erect with splendid poise. Overlapping, but pointed perianth of fine texture, and a nicely frilled, light lemon crown which passes to white except at the margin, this too, eventually becoming white. 35c each.

**BRYHER** (Favell) 1939. 3c. L. 20". One of those beautiful cool green and white Daffodils; this is large for one of its type. Somewhat intermediate between Chinese White and Foggy Dew in form. Withdrawn for increase.

**BUNCRANA** (Richardson) 1938. ab. M. 18". Large, broad, white perianth, with quite a good sized, rather long crown, of peachy-orange color. \$1.50 each.

**BUNDORAN** (Richardson) 1945. 2b. M. 18". Another good flower with nice, large, flat perianth, and a large frilled cup with interesting buff tones. \$1.00 each.

**CALIFORNIA GOLD** (Barr) 1945. 2a. M. 21". A good sized flower of rich, clear, golden yellow in the smooth, flat perianth, having quite a large crown of solid, very vivid orange red color, with an intensely frilled margin. Quite resistant to fading. \$2.00 each.

**CAMBERWELL KING** (Brown) 1933. 1a. M. 24". Beautiful smooth texture, splendid form, giant size, and rich pure coloring combine to make this one of the best yellow trumpets, although not as uniform in performance as some, and the stems could do with added strength. This has given us excellent seedlings. Stock very short. \$1.00 each.

**CAMPFIRE** (G. L. Wilson) 1944. 2a. M. 22". One of Mr. Wilson's seedlings which we introduced. A stalwart, well formed, rich clear yellow, with brilliant orange red crown. Prolific grower and free bloomer. 25c each; \$2.50 per dozen.

**CANTABILE** (G. L. Wilson) 1932. 9. L. 15". Among the most beautiful of the poets. Rounded, pure white perianth, and a flat, emerald green eye, with yellow band, and a red rim. An ideal flower for cutting, but must be taken early to preserve the exquisite coloring. Rather small in size. Limited stock. 40c each.

**CANTATRICE** (G. L. Wilson) 1936. 1c. EM. 22". A flower styled after Beersheba, but with more even form and build, and having a taller stem. Regarded as the most perfect exhibition white trumpet. It has doubtless won more awards in its class than any other white trumpet in recent years in the major shows. \$2.50 each.

**CARBINEER** (A. M. Wilson) 1927. 2a. M. 23". Very broad, overlapping, deep golden yellow perianth of heavy substance, standing at right angles to the medium sized, rich orange red cup which shades to yellow at the base. As with most yellow-reds, the cup coloring varies with weather and climatic conditions. 25c each; \$2.50 per dozen.

**CARDIGAN** (A. M. Wilson) 1935. 2b. M. 20". Not a new one, but one of fine quality, somewhat after the style of Bodilly. Of show quality, and excellent for hybridizers. 50c each.

**CARLTON** (P. D. Williams) 1927. 2a. EM. 22". A grand flower of gigantic proportions, having very broad, flat, rich lemon yellow perianth, and nicely proportioned larged frilled yellow crown. Very vigorous and prolific. A "must have" for every one starting a Daffodil collection. 25c each; \$2.50 per dozen.

**CARNLOUGH** (G. L. Wilson) 1934. 2c. EM. 21". Broad white perianth of smooth satiny finish, and faint creamy crown with delicate pinkish frill. Color is very evanescent. Withdrawn to increase stock.

**CARO NOME**, see page 3.

**CASABIANCA**, see page 4.

**CATHEDRAL** (Oregon Bulb Farms) 1950. 5a. M. 16". A large triandrus hybrid with about three pure white flowers on a stem. Good. \$7.00 each.

**CEYLON** (Richardson) 1943. 2a. E. 21". Probably the finest red and yellow exhibition Daffodil that I list. Good sized flower of exceptionally smooth finish, with deep golden yellow perianth; the crown being a rich deep orange red, taking some days to develop fully. Only a few to go. \$8.00 each.

**CHARITY MAY** (C. F. Coleman) 1948. 6a. EM. 14". One of a series of very lovely cyclamineus hybrids recently raised in England. A charming, graceful flower of clear soft yellow, with broad, much reflexed perianth; and quite a long crown, somewhat expanded at its mouth. Limited stock. \$3.50 each.

## Exhibitor's Collection

ARDOUR	FOGGY DEW
BAHRAM	GALWAY
BINKIE	GARLAND
CALIFORNIA GOLD	GREEN ISLAND
CANTATRICE	KINGSCOURT
CHINESE WHITE	LIMERICK
FESTIVITY	TROUSSEAU

**One bulb of each of the above  
valued at \$25.35, for \$20.50**

**CHEERFULNESS** (van der Schoot) 1923. 4. M. 22". Cluster of blooms on each stem, having white petals interspersed with yellow. Free of bloom and increase. Nice for cutting. 3 for 50c; \$1.80 per dozen.

**CHERIE** (Mitchell) 1935. 7b. M. 22". A nicely formed ivory white jonquil with pink flushed cup. One to three blooms per stem. Pretty and very unique, being the only one of its type that we list. 50c each.

**CHEYENNE** (Powell) 1946. 7b. M. 20". An unusual creamy white jonquil with two or three flowers per stem. Limited stock. 70c each.

**CHINA CLAY** (Brodie) 1928. 1c. M. 16". A small to medium sized flower designed somewhat like Beersheba; but with narrower petals of more geometric form, and marble like finish. A pretty little flower. 40c each.

**CHINESE WHITE** (G. L. Wilson) 1937. 3c. LM. 18". A superbly beautiful flower of crystalline purity. Very large, rounded, much overlapping perianth, and saucer shaped crown with a touch of green in the eye. Demurely droops its head on first opening, but straightens up as it expands. One of the most beautiful of all Daffodils. \$2.25 each.

**CHINOOK**, see page 4.

**CHUNGKING** (G. L. Wilson) 1942. 3a. EM. 20". Probably the best in its class. Magnificent flower with most circular, flat, intense gold perianth, and vivid orange red, rather flat crown. The leading winner in its class. \$1.10 each.

**CIBOLA**, see page 4.

**CLACKAMAS**, see page 4.

**CLACKMAR** (G. L. Wilson) 1943. 3a. M. 20". Pretty flower with flat, smooth, overlapping, bronzy yellow perianth, and brilliant orange red crown. Prolific of both bloom and increase. A Wilson seedling that we introduced. 3 for 50c; \$1.90 per dozen.

**CLEENA** (Richardson) 1939. 2b. EM. 20". A Fortune seedling somewhat smaller than its parent but with smoother flowers, and entirely different in color, this having white perianth, and a crown of white shading to primrose and apricot. 50c each.

**CLOCKFACE** (G. L. Wilson) 1947. 3b. L. 20". Satin smooth, milk white perianth, with a flat crown edged with a ribbon of orange red. Large flower. Just a few to spare. \$3.00 each.

**COLORATURA**, see page 4.

**CONTENT** (P. D. Williams) 1927. 1b. EM. 24". A large flower built along the lines of Beersheba, but with wider perianth segments, which are twisted just enough to eliminate any stiffness, yet are very smooth and flat in general appearance. Opens pale greenish lemon, but fades to nearly white. Very durable. Excellent for growing in pots, and of great value for breeding. \$1.20 each.

**COOLIN** (A. M. Wilson) 1937. 1c. M. 20". A massive, pure white flower with broad, flat perianth, and a long, somewhat flaring trumpet. Good substance and quality and a good increaser, although it does not usually make attractive bulbs. 75c each.

**CORONADO**, see page 4.

**CORRYMEELA** (G. L. Wilson) 1947. 2b. M. 18". Good white perianth, with expanded, flanged crown of pale, cool primrose flushed rosy salmon. Limited stock. \$2.25 each.

**COVERACK PERFECTION** (Brodie) 1930. 2b. M. 22". A grand immense flower with overlapping white perianth, and large saucer shaped crown of creamy buff, edged salmon apricot under favorable conditions. A fine flower, even when not at its best in color. From Fortune x Mitylene. 50c each.

**CRAFORD** (P. D. Williams) 1930. 8. EM. 20". One of the best tazettas. Several crinkled white blooms with red eyes on each stem. Especially desirable for pots as it forces early and easily. 35c each.

**CREAM CUP**, see page 4.

**CRETE** (Richardson) 1945. 3b. L. 22". A magnificent flower with very rounded, flat, overlapping, pure white perianth of much substance, and a nearly flat, red bordered eye. 85c each.



BODILLY — Page 7

**CROCUS** (P. D. Williams) 1927. 2a. LM. 16". Although not very tall, this is a well formed, large flower of richest, intense, almost orange gold coloring. A splendid rich yellow Daffodil. 35c each.

**CROWN DERBY** (Brodie) 1936. 3b. LM. 21". Large white perianth; striking, nearly flat, yellow crown bordered red. 50c each.

**CUSHENDALL** (G. L. Wilson) 1931. 3c. L. 18". A small flower of most perfect form and ethereal beauty. Very smooth, perfectly flat, circular perianth; small eye, with delicious cream frill, and moss green center. Not a very rapid increaser and we still have very limited stock. \$1.25 each.

**CYCLATAZ** (Tait) 1923. 10. E. 5". One of the very interesting miniatures, but one of which very limited stocks are available. Clusters of small yellow blooms with orange cups. Order early if you want this one. \$1.00 each.

**DACTYL** (Engleheart) 1923. 9. M. 20". Although the parent of a considerable number of the newer poets, this is taller, and a better grower than many of its progeny. A very fine flower with pure white perianth, and red rimmed eye. 35c each.

**DAWN** (Engleheart) 1907. 5b. LM. 14". A curious but pretty and graceful little flower, with strongly reflexed and twisted white perianth, and very flat, disc-like yellow cup. Two or three flowers to a stem. 60c each.

**DEODORA** (Richardson) 1955. 2b. M. 21". Very broad, flat, smooth, rounded, pure white perianth of splendid substance. Large saucer-shaped crown of primrose passing to white, with a frilled margin of greenish lemon. Very fine. Only a bulb or two to spare. \$40.00 each.

**DERVISH** (G. L. Wilson) 1937. 2a. M. 20". One of those unusual and different colors; in this case a buff yellow perianth and brick red crown. 40c each.

**DEW POND** (G. L. Wilson) 1955. 2c. LM. 17". A lovely flower with large, smooth white perianth, and a good sized bowl shaped crown. \$4.50 each.





CHINESE WHITE — Page 8

**DICK WELLBAND** (Mrs. Backhouse) 1929. 2b. M. 21". One of the more colorful and easy to grow of the red cups. Creamy white perianth with brilliant orange red crown. Very showy. 30c each; 3 for 80c.

**DIOLITE** (Miss Evelyn) 1930. 2a. EM. 24". An outstanding large flower with exceptionally smooth finish. Beautifully formed, large, flat, clear yellow perianth, and a good sized, somewhat flaring crown of yellow with a band of orange red. Strong vigorous grower. 25c each; \$2.50 per doz.

**DIOTIMA** (de Graaff) 1927. 1a. E. 25". Size and earliness combine to make this one of the most in demand of the yellow trumpets. Very large, star-like, flat perianth, and a long, nicely expanded, crimped trumpet. Fine garden flower. 40c each.

**DOVE WINGS** (C. F. Coleman) 1953. 6a. EM. 14". A sister seedling to Charity May, this one has a reflexed white perianth, and medium length trumpet crown with indented crown. Very nice. \$3.50 each.

**DREAMLIGHT** (G. L. Wilson) 1934. 3b. L. 17". Sparkling snow white, circular perianth with overlapping petals; white eye, overlaid soft gray-green, with a distinct rim of cerise. Perfect for cutting. Good for breeding. 35c each.

**DUKE OF WINDSOR** (Uit den Boogard) 1937. 2b. M. 24". A very large flower of John Evelyn type, having white perianth of heavy, thick texture, and a very large flaring ruffled crown of yellow becoming deeper at the edge—in favorable seasons, the whole crown being light orange. A very good garden flower, being one of the so-called "weather-proof" Daffodils. Very popular. 50c each.

**DUNKELD** (Brodie) 1935. 2a. LM. 20". The individual perianth segments are almost round, making this a very circular flower. Flat, clear yellow perianth, and saucer shaped shallow crown of vivid orange red. A very precisely modeled flower of great beauty. Quite prolific. 50c each.

**DUNLAVIN** (Richardson) 1945. 2c. LM. 19". A first class show flower with smooth, flat, broad, pure white perianth, and good size trumpet like crown, opening primrose and fading to white. 75c each.

**DUNSEVERICK** (G. L. Wilson) 1940. 2c. M. 19". An exceptionally large flower with smooth, white perianth, and bold, expanded, fluted crown of ivory changing to white. 75c each.

**EFFECTIVE** (G. L. Wilson) 1931. 1b. M. 19". An exceptionally brilliantly contrasted bi-color trumpet, with flat, very smooth white perianth, and rich chrome yellow trumpet; a halo of yellow extending into the perianth. \$1.25 each.

**ESTRELLITA**, see page 4.

**EVENING** (G. L. Wilson) 1935. 2c. M. 18". A very pretty, all white flower of fine form. Very prolific. Much valued for hybridizing because of its propensity to give pink seedlings. 25c each; \$2.50 per dozen.

**FAIRY CIRCLE** (Brodie) 1913. 3b. M. 14". A most delightful bantam flower with white perianth, and pink rimmed eye. Not a very good grower. 60c each.

**FAIRY DREAM**, see page 4.

**FAIRY MOTHER** (Lewis) 1955. 2b. LM. 17". Quite large rounded white perianth, crown of rich pinkish orange salmon. Quite unique in color. Very limited stock. \$3.00 each.

**FAIRY TALE** (G. L. Wilson) 1952. 3b. M. 18". A flower of fine quality with smooth rounded white perianth, with rather flat crown of citron, margined with an orange band. \$5.00 each.

**FEBRUARY GOLD** (de Graaff) 1923. 6a. EE. 14". One of the very first Daffodils to bloom. Lemon yellow perianth, deeper yellow trumpet. Very worth while. 25c each.

**FERMOY** (Richardson) 1938. 2b. LM. 22". One of the very largest of the red and white Daffodils. Very large ivory white perianth of fine quality; large bowl shaped crown of orange red shading to yellow at the base. \$1.00 each.

**FESTIVITY**, see page 4.

**FIDELIS** (Clark) 1950. 2c. EM. 18". Informal white perianth with rather long crown of good pink coloring. One of the earliest of the pinks to bloom. 25c each.

**FIRE CHIEF**, see page 4.

**FIRE GLEAM** (Lewis) about 1940. 2a. EM. 22". Quite good quality yellow perianth, and orange red crown. Vigorous grower. \$1.20 each.

**FIREPROOF** (G. L. Wilson) 1952. 2a. EM. 20". A seedling of Rustom Pasha blooming quite early in the season. Bright golden yellow perianth, and solid orange red cup that holds its color even in sunny warm weather. \$4.50 each.

**FIREWATER** (Brodie) 1944. 3b. M. 20". Decorative pure white perianth, citron yellow crown with bright orange red margin. 30c each.

**FLAMENCO** (Richardson) 1935. 2b. M. 20". A large flower with round, flat, overlapping, creamy white perianth, and a widely expanded, deep Seville orange crown. One of the most sunproof of the brightly colored flowers. Vigorous, strong grower. 30c each.

**FLAMINGO**, see page 3.

**FLYING SAUCER**, see page 4.

**FOGGY DEW** (G. L. Wilson) 1941. 3c. M. 22". A large, very broad, rounded, pure white perianth with much substance, and a very heavily frilled creamy white crown, green in the center. A very lovely flower. We find it gives excellent seedlings. \$1.75 each.

**FORTUNE** (Ware) 1923. 2a. E. 25". Flowers of great size and good form borne on tall strong stems. Rich yellow perianth, and light orange crown. One of the greatest advances in Daffodil breeding. 25c each; \$2.75 per dozen.

**FORTUNE'S BOWL** (Brodie) 1930. 2a. EM. 22". A large flower with medium light yellow perianth, and large orange red, bowl shaped crown. 25c each; \$2.50 per dozen.

**FORTUNE'S CREST** (Brodie) 1930. 2a. E. 23". Petals more rounded, and lighter in color than Fortune, but the large crown is most intense orange red. A good keeper when cut. 65c each.

**FORTY NINER** (Oregon Bulb Farms) 1950. 5a. M. 12". A very attractive light yellow triandrus hybrid with several blooms on a stem, and often gives many stems from a bulb. Very worth while addition to its class. \$7.00 each.

## Pink Collection

CHERIE	PINK LADY
CORONADO	PINK LACE
INTERIM	ROSEANNA
LISBREEN	ROSE OF TRALEE
MABEL TAYLOR	SHIRLEY WYNESS
PENVOSE	SHOT TOWER
PINK A DELL	WILD ROSE

**One bulb of each of the above  
valued at \$19.05, for \$15.50**

**FOYLE** (G. L. Wilson) 1940. 2b. M. 18". A large flower of smooth finish and texture, with white perianth and creamy colored crown, which is edged with very faint pink under favorable conditions. 75c each.

**FRIGID** (G. L. Wilson) 1935. 3c. L. 20". Among the very last Daffodils to bloom. Rounded, very pure white flowers of excellent form, with green eye. Limited stock. \$2.50 each.

**FRIVOLITY** (G. L. Wilson) 1950. 2b. M. 20". A very lovely flower with pure white, satin smooth, flat, well formed perianth; and salmon orange, saucer shaped crown with a narrow yellow rim. \$2.00 each.

**FROLIC**, see page 3.

**FRONTIER** (G. L. Wilson) 1944. 1a. E. 21". A nicely formed, clear light yellow trumpet. Not altogether uniform in performance, but at its best, one of the most beautiful yellows. 80c each.

**GALILEE** (G. L. Wilson) 1950. 3b. LM. 21". Broad, flat, satin smooth, pure white perianth, with a well proportioned, shallow crown of white, with a rim of soft salmon orange. Rather long necked, but a very lovely flower. \$7.00 each.

**GALWAY** (Richardson) 1943. 2a. M. 23". A gorgeously beautiful, all yellow Daffodil, probably the best of all the yellows. Flat, smooth, overlapping perianth, and trumpet shaped crown of excellent proportion. Rich golden color, heavy substance, and strong vigorous growth, makes this a superb addition to this class. \$1.50 each.

**GARLAND** (Brodie) 1940. 2a. LM. 19". So broadly overlapping is the perianth, that this has one of the most circular in form of all the varieties we list. Very flat, rich yellow, with nearly flat crown of rich orange red. One or two seasons it has come with a broad band of orange red instead of being solid in color but it is attractive either way. \$1.00 each.

**GIBRALTAR** (Richardson) 1937. 2a. LM. 20". Quite like Carbineer but with perhaps still broader perianth of cardboard like substance. 50c each.

**GLENSHANE** (G. L. Wilson) 1941. 2b. LM. 18". A lovely flower of beautiful form. White perianth and cream crown, frilled gold. Appears much like a 3b. \$1.00 each.

**GOLD CROWN**, see page 4.

**GOLD-DIGGER** (Richardson) 1941. 1a. M. 21". A well formed flower of intense deep golden yellow. 60c each.

**GOLDEN DUCAT** (Speelman) 1947. 4. M. 21". A double King Alfred sport, and perhaps the finest double yellow on the market. Very large and fully double with overlapping rows of rich yellow petals. Just a few bulbs. \$6.00 each.

**GOLDEN GOBLET** (van Tubergen) 1927. 7a. M. 22". Very large deep golden yellow jonquil hybrid. Only one bloom on each stem. 35c each

**GOLDEN HIND** (G. L. Wilson) 1938. 1a. M. 20". Large, deep yellow trumpet of exhibition form. 90c each.

**GOLDEN PERFECTION** (de Graaff) 1927. 7b. LM. 25". One of the largest and most striking of the jonquil hybrids, this having two or three large blooms on a stem. 30c each; 3 for 80c.

**GOLDEN TORCH** (Brodie) 1942. 2a. EM. 22". Large, rich golden yellow of fine form. At its best, one of the finest of the yellow Daffodils. \$1.00 each.

**GOLDEN TREASURE** (Lewis). 2a. E. 23". A fine flower with broad, flat, golden yellow perianth, and good sized crown of rich orange red with heavily frilled margin. \$2.50 each.

**GOLDSITHNEY** (Alec Gray) 1949. 2a. EM. 8". A dwarf, clear bright yellow of nice form. 50c each.

**GRACIOUS** (van Leeuwen) 1931. 2b. M. 22". A large white perianth of good form, and bowl shaped crown of lemon yellow. I believe this is one of the parents of Green Island. While not spectacular, this is a pleasing flower of good size and quality. 50c each.

**GREEN EMERALD**. 2b. M. 22". A Dutch variety of John Evelyn ancestry. Large striking flower particularly suited to garden decoration. 50c each.

**GREEN ISLAND** (Richardson) 1938. 2b. LM. 22". A sensational flower of very large size, great substance, and smooth texture. Smooth, rounded perianth segments make a very circular flower. Bowl shaped crown with greenish center, passing to white, and margined greenish lemon. Short necked. Of great value to exhibitors and breeders. Many of our finest seedlings have come from this variety. \$2.75 each.

**GREENLAND** (G. L. Wilson) 1949. 2c. M. A new very white flower of good proportions valued for its ability to give good seedlings. \$2.00 each.

**GUSTO** (G. L. Wilson) 1944. 2a. M. 16". Rich deep yellow of very good form. Not very tall, but a vigorous, stiff stemmed, good garden flower. 30c each.

**HAWERA** (W. M. M. Thompson) 1938. 5b. LM. 8". Considerably like April Tears, this is somewhat earlier in blooming and of a little paler coloring. Both are very good. 75c each.

**HIWASSEE** (Powell) 1943. 8. EM. 14". Cluster of rather small white flowers, very much like its parent, the old variety Paper White, which is much used in forcing, but this is much hardier. 60c each.

**HONG KONG** (Richardson) 1939. 2a. EB. 24". Similar in size and form to its parent, Fortune, but this had a much deeper orange crown. \$1.25 each.

**HOPESAY** (Habershon) 1947. 2b. M. 20". A very good flower with very large pure white perianth, and light yellow crown, strongly banded with orange red. \$5.00 each.

**HUGH DETTMAN** (Clark). 2b. LM. 17". A nicely formed white flower with good sized pink crown. \$8.00 each.

**HUGH POATE** (Brodie) 1931. 2a. M. 23". This is one of the finest of the Fortune seedlings, it being a very large flower with broad, smooth, overlapping perianth of clear yellow, and a large bowl shaped crown of deeper yellow to quite rich orange, depending on weather conditions. The perianth has such rounded segments as to make the bloom very attractive from the back as well as from its face. 25c each; \$2.50 per dozen.

**HUNTER'S MOON** (Brodie) 1941. 1a. M. 22". The soft, cool, luminous lemon coloring make this a very lovely flower. Good sized with pointed perianth segments, and a nicely flanged and serrated trumpet. \$1.25 each.

**ILLUMINATE** (Lewis) 1940. 2a. EM. 22". Large flower with clear yellow perianth, and a brilliant orange crown. Has been quite popular in New Zealand where it originated. 70c each.

**INDIAN SUMMER** (G. L. Wilson) 1940. 2a. LM. 22". A bit later in blooming than most of the red cups, this is a high quality flower of most intense coloring. Well formed circular perianth of vivid deep gold, and a medium sized crown of striking deep orange scarlet. Very vigorous and prolific. One of the best in its class. 80c each.

**INTERIM** (G. L. Wilson) 1944. 2b. LM. 21". Clear white, slightly reflexing perianth of nice quality; pale primrose cup with wide band of strong salmon pink. Tall stems and vigorous grower although not a very rapid increaser. It is much in demand for hybridizing and we are unable to build up much stock. \$2.50 each.

**INTERLUDE**, see page 3.

**IRENE COPELAND** (Copeland) 1923. 4. M. 16". Very full double, water lily-like flowers on quite stiff stems. Yellow and white petals interspersed. 35c each.

**ISCHIA** (Brodie) 1932. 2b. M. 18". White perianth; long crown, flushed salmon when freshly opened. 40c each.

**JERPOINT** (Richardson) 1943. 2a. M. 21". Very broad, flat yellow perianth of much substance, and a rather flat crown of yellow with orange border. 40c each.

**JOHN EVELYN** (Copeland) 1920. 2b. M. 18". So well known as to scarcely need description. Very large circular, pure white perianth; very heavily frilled and ruffled yellow crown, shaded orange in cool seasons. 3 for 50c; \$1.75 per dozen.

**KANCHENJUNGA** (G. L. Wilson) 1934. 1c. M. 19". A colossal flower that elicits much attention. Extremely broad, overlapping white perianth, and an enormous bell shaped trumpet that is frilled and serrated in a most effective manner. \$1.20 each.

**KANDAHAR** (Brodie) 1927. 1a. EM. 22". Huge, broad, overlapping perianth; massive, bell-like trumpets crimped at its widely expanded mouth. 35c each.

**KENMARE** (Richardson) 1937. 2c. LM. 19". Large, well formed flower that was introduced as a pink, and while it seldom has much color here, it has proven a good breeder of pinks. 40c each.

**KIBO** (G. L. Wilson) 1948. 2c. M. 24". A flower of beautiful form, with very tall stems. The beautifully flanged and crimped trumpet-like crown makes it very striking. \$2.50 each.

**KILLALOE** (Richardson) 1937. 2c. LM. 19". Another white of high quality and giant size. Exceptionally large white perianth, and a large trumpet-like crown, nicely flanged at the mouth. \$2.00 each.

**KILMORNA** (Richardson) 1945. 2b. M. 22". A most lovely flower carrying much of the form of Brunswick, but of perhaps better quality, and blooming considerably later. We like it very much. 50c each.

**KILWORTH** (Richardson) 1938. 2b. LM. 21". Fine quality, flat, white perianth, and a large crown of rich, vivid, solid orange red. One of the very best of its type. \$1.20 each.

**KING OF THE NORTH** (Brodie) 1927. 1a. E. 15". A well formed, clean pure yellow trumpet Daffodil that has been in demand because of its breeding value. Limited stock for sale at 35c each.

**KINGSCOURT** (Richardson) 1938. 1a. M. 21". Broad, smooth perianth, and rather narrow flanged trumpet. Intense golden yellow color throughout and of finest texture. Perianth often does not open out completely flat, but in spite of that, it is a great exhibition flower. \$1.75 each.

**KINGS SUTTON** (Clark). 5a. M. 15". A yellow triandrus hybrid sent us from Australia, this is fashioned similar to Yellow Warbler but somewhat larger. An interesting, unusual flower. \$1.25 each.

**KIOWA** (Powell) 1946. 7b. LM. 17". Creamy white jonquil hybrid. 50c each.

**KLINGO** (G. L. Wilson) 1941. 2a. M. 24". Large flower with yellow perianth of nice proportions, and a good sized orange red crown. A good keeper and quite weather resistant. Quite like Carbineer in form. 25c each; \$2.50 per dozen.

**KNAVE OF DIAMONDS** (G. L. Wilson) 1935. 9. L. 17". Very pretty, rounded, pure white perianth with a small red eye. 30c each.

**KRAKATOA** (Richardson) 1937. 2a. E. 20". A most spectacular flower with large flat, intense gold perianth, and a very large crown of fiery orange red. Color varies with weather conditions, but it is usually one of the most striking of all the red cups. \$1.20 each.

**LA BELLE** (Barr & Sons) 1937. 7b. LM. 8". A very pretty little flower with two or three blooms to a stem. Perianths are broad and flat, of quite deep yellow, and nearly flat cups of orange red. 75c each.

**LADY KESTIVEN** (Mrs. Backhouse) 1933. 3b. M. 20". Pure white perianth and cherry red crown. Very brilliant but should be cut early to preserve the vivid color. 40c each.

**LAMINGTON** (Richardson) 1954. 2a. EM. 17". A very large flower after the style of Krakatoa but with better form. Very limited stock. \$30.00 each.

**LANARTH** (P. D. Williams) 1907. 7b. M. 22". Golden yellow with orange cup. A jonquil hybrid with one or two blooms per stem. 35c each.

**LAPFORD** (G. L. Wilson) 1952. 1b. E. 21". Broad, flat, smooth, white perianth; soft yellow trumpet. Quite a large early flower. \$4.00 each.

**LATE SUN**, see page 4.

**LEBANON**, see page 4.

**LEMON DROPS**, see page 5.

**LEMON MERINGUE**, see page 5.

**LEPRECHAUN** (P. D. Williams) 1939. 2a. M. 21". A small red and yellow flower of excellent form and jewel-like brilliance. Fine for cutting. 40c each.

**LIGHTS OUT** (G. L. Wilson) 1939. 9. L. 18". Pure white perianth with a solid red eye. 50c each.

**LIMERICK** (Richardson) 1938. 3b. LM. 20". Pure white perianth of fine form, and cherry red, nearly flat crown. A most beautiful, brilliant flower, and a great improvement on Hades which we have discontinued. 75c each.

**LINN**, see page 5.

**LINTIE** (Barr & Sons) 1937. 7b. LM. 8". Quite similar to La Belle but a little earlier in blooming. 50c each.

**LISBREEN** (G. L. Wilson) 1940. 2b. M. 17". Very pretty flower with quite large, well formed, smooth white perianth, and a nicely proportioned crown, flushed pale orchid pink. Prolific. 45c each.

**LOCH MAREE** (Brodie) 1946. 2b. M. 19". Decorative in form, this is rather a large flowered pink, with white perianth and trumpet shaped crown of pale soft rosy pink with a hint of lilac. \$2.00 each.

**LOUGH AREMA** (G. L. Wilson) 1950. 3b. LM. 18". An exquisite little flower with pure white perianth, and green eye, with salmon orange rim. \$2.00 each.

**LUDLOW** (A. M. Wilson) 1937. 2c. M. 21". Superb flower of ideal form. Large pure white perianth of geometrical perfection in outline, and a rather large crown of excellent balance. Certainly one of the finest white Daffodils. \$1.50 each.

**LUNA MOTH**, see page 5.

**LUNAR SEA**, see page 5.

**MABEL TAYLOR** (Clark) 1944. 2b. M. 21". White perianth, with a large trumpet shaped crown of pale yellow, having a wide heavily frilled band of rich rosy pink, with the color becoming more salmon toned, and gradually extending farther down the inside of the crown as the flower develops. The most spectacular of the named pinks we grow in any quantity. Valued for breeding, and beautiful grown in pots. Vigorous and prolific. \$1.80 each.

**MADRIGAL**, see page 5.

**MAGHERALLY** (G. L. Wilson) 1944. 2a. M. 22". Another rather small flower of most brilliant coloring and good form. Bright yellow and orange red. 25c each.

## Connoisseur's Group

ARTIST'S MODEL	LUNA MOTH
BITHYNIA	MOONSTRUCK
CHARITY MAY	MT. JEFFERSON
COLORATURA	STATUE

One of each of the above  
valued at \$64.50, for **\$50.00**, and a bulb  
of MADRIGAL will be included free

# Grant E. Mitsch COLLECTIONS

## Popular Collection

BALMORAL	DIOTIMA	PHILTATON
BEERSHEBA	FORTUNE	RUBRA
BODILLY	FORTUNE'S BOWL	SELMA LAGERLOF
CARBINEER	HUGH POATE	SILVER CHIMES
CARLTON	MALVERN GOLD	THALIA
CHEERFULNESS	MARGRIET	WILLAMETTE
DIOLITE	PENVOSE	

**One bulb of each of the above varieties  
valued at \$5.95**

**for \$4.75 prepaid**

**(3 bulbs of each for \$13.50)**

## Daffodil Haven Novelties

ARDOUR	FESTIVITY	SEOUL
BONNEVILLE	PAUL BUNYAN	SACAJAWEA
CORONADO	RADIATION	

**One of each of these  
valued at \$19.35, for..... \$15.00**



**CORONADO**  
Page 4

**RADIATION**  
Page 5



**ARDOUR**  
Page 4





MABEL TAYLOR  
Page 11



BEERSHEBA  
Page 6

## Quality Collection

- |                     |              |
|---------------------|--------------|
| BAHRAM              | LUDLOW       |
| CONTENT             | MARIE LOUISE |
| COOLIN              | MARVIK       |
| COVERACK PERFECTION | PLAYBOY      |
| DUNKELD             | SUDAN        |
| INDIAN SUMMER       | TINSEL       |

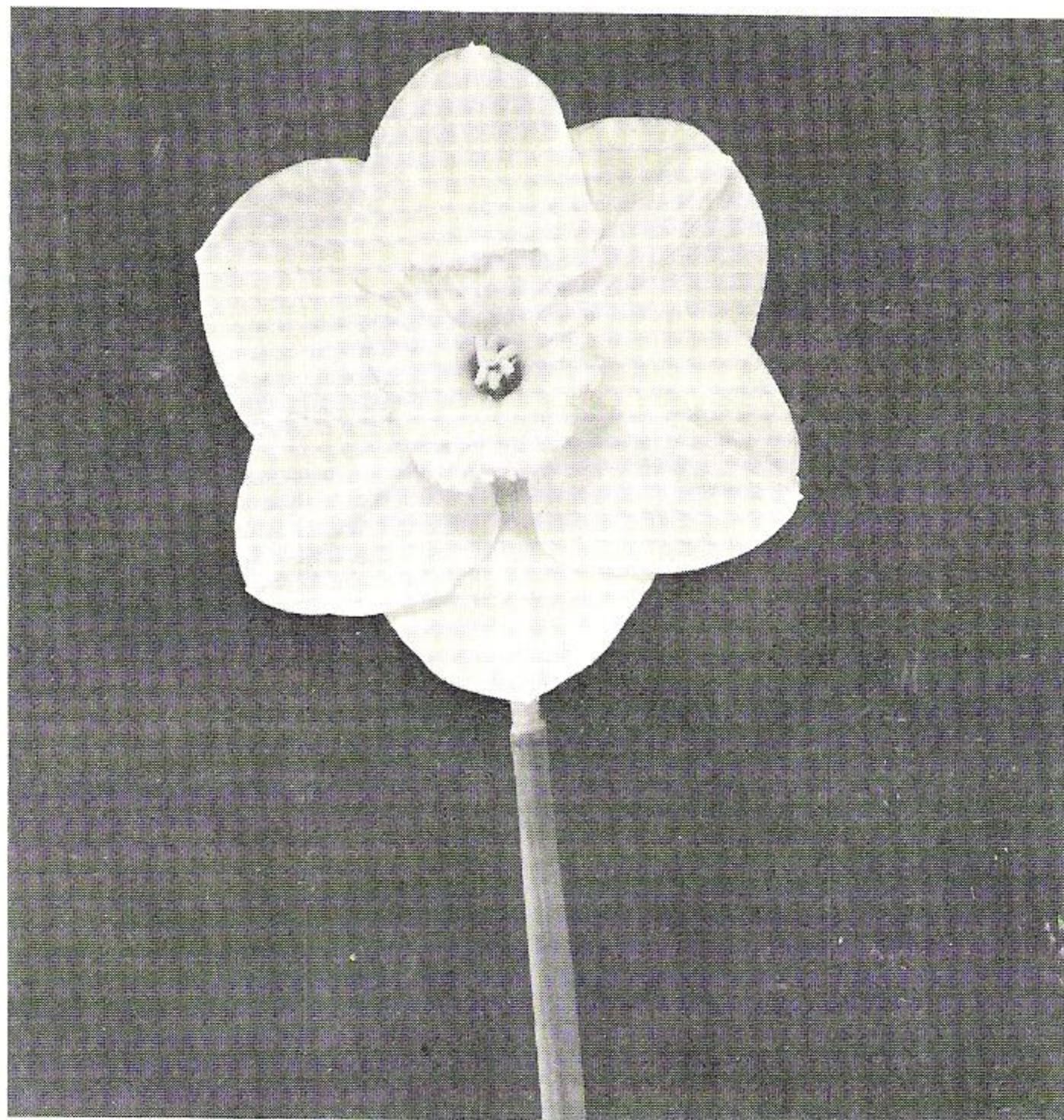
**One bulb of each of this group**

valued at \$10.45

for **\$8.00**



ARTIST'S MODEL  
Page 6



BITHYNIA — Page 4

**MAHMOUD** (Richardson) 1937. 3b. L. 18". Broad, smooth, waxy, pure white perianth of beautiful form, and a ruby red, small cup. 75c each.

**MAJARDE** (U. d. Boog.) 1944. 2b. M. 16". Another of the striking series of John Evelyn hybrids raised in Holland. White perianth, and ruffled and frilled large yellow crown. 50c each.

**MAKE UP** (Clark). 2b. EE. 14". Extreme earliness is the chief merit of this variety, it often being the first of the larger flowered Daffodils to open. White perianth and bell shaped trumpet-like crown of lemon. 75c each.

**MALVERN GOLD** (Brown) 1933. 2a. EE. 24". A flower that should have great value commercially because of its extreme earliness and tall stems. Good sized flower with flat perianth, and large crown flanged and crimped. Pure all yellow. 25c each; \$2.50 per dozen.

**MARCH SUNSHINE** (de Graaff) 1923. 6a. E. 12". Another early one, this coming a few days after February Gold, and being a smoother flower. 35c each.

**MARCO** (Brodie) 1929. 3b. LM. 14". A dainty little white flower with pinkish edged eye. 40c each.

**MARGRIET** (Uit den Boogaard) 1944. 2b. LM. 17". Large white perianth and yellow or pale orange crown. Another of the John Evelyn series. Good garden flower. 25c each; \$2.50 per dozen.

**MARIE LOUISE** (Lewis) 1940. 2b. LM. 19". Large, very rounded, pure white perianth; wide, almost flat crown with narrow lemon frill. Very pretty and this seems to be a better grower than some of its type. \$2.00 each.

**MARIONETE** (Alec Gray) 1946. 2a. EN. 5". Bright yellow with orange rimmed crown. 50c each.

**MARKET MERRY** (Brodie) 1932. 3a. M. 20". Rich deep buff yellow or old gold perianth, and a brilliant deep brick red shallow cup. Prolific. 25c each.

**MARY COPELAND** (Copeland) 1914. 4. LM. 18". Large, strong growing double of cream with short orange petals interspersed in the center. 35c each.

**MATAPAN** (Richardson) 1941. 3b. M. 20". Crystal white perianth of beautiful rounded form, and a vivid red eye. Not very large, but early for one of its class. \$2.25 each.

**MILANION** (G. L. Wilson) 1935. 1a. M. 22". One of the finest of the yellow trumpet varieties. Good form and quality with a beautifully flanged and crimped trumpet. Rich deep color. \$1.50 each.

**MIRTH**, see page 5.

**MISTY MOON** (G. L. Wilson) 1936. 3b. L. 20". Sparkling white perianth of very circular build, grey-white eye, banded with a soft halo of pale salmon orange. Beautiful for cutting. 30c each.

**MITE** (Booth). 6a. EE. 9". A small flower, opening at the start of the season. More like its parent, cyclamineus, than most hybrids. Floriferous. The demand is heavy and our stock remains limited. Withdrawn for increase.

**MONACO** (Richardson) 1937. 2b. M. 18". Good sized flower with nice rounded white perianth, and apricot orange crown. 45c each.

**MOONDANCE** (G. L. Wilson) 1937. 3c. M. 18". A very pretty, all white flower, somewhat like Chinese White in form but considerably smaller. 60c each.

**MOONSTRUCK** (G. L. Wilson) 1944. 1a. E. 22". An immense flower of very good form. Cool sulphur lemon. \$6.00 each.

**MR. JINKS** (Brodie) 1930. 3b. LM. 21". Very large rounded, glistening white perianth, with a small cup, edged red. The sparkling sheen in this flower is generally associated only with the poeticus group. 25c each; \$2.50 per dozen.

**MRS. O. RONALDS** (Ronalds). 2b. LM. 17". Very broad, smooth, overlapping, white perianth, and a good sized crown of good pink coloring. Regarded in Australia as one of the finest pinks. Very few bulbs. \$35.00 each.

**MRS. R. O. BACKHOUSE** (Backhouse) 1923. 2b. LM. 21". White perianth of fair form, and long trumpet-like crown of quite rich salmon apricot to salmon pink. The best in color at its price. 25c each; \$2.50 per dozen.

**MULRANY** (Richardson) 1950. 2a. M. 20". A big all yellow flower after the style of Galway. Few bulbs to spare yet. \$5.00 each.

**MYSTIC** (G. L. Wilson) 1923. 3b. L. 20". Cream flower with eye edged with pinkish orange. 25c each.

**NANKING** (Richardson) 1939. 2a. M. 20". Perianth of pinkish buff tone, and coppery red cup. Quite distinctive. 35c each.

**NARVIK** (Richardson) 1940. 2a. M. 22". One of the most perfect red and yellow Daffodils. Superb blooms with clean cut, clear, smooth, golden yellow perianths, and frilled, medium sized crowns of orange crimson. Blooms last a long time after cutting. Some seasons the flowers open without much of their brilliant color but develop it two or three days later. \$1.00 each.

**NIGERIA** (Richardson) 1942. 2a. M. 21". Clear yellow, very broad, overlapping perianth; large crown of bright orange red, shading to gold at the base. Very fine. 85c each.

**NILKANTA** (G. L. Wilson) 1941. 1c. M. 17". Large smooth flower of good quality. White throughout. \$1.25 each.

**NIPHETOS** (P. D. Williams) 1927. 2c. M. 18". Flat, broad, white, overlapping perianth, and quite large flaring crown. A splendid flower. 50c each.

**NIVETH** (Henry Backhouse) 1931. 5a. M. 14". Very nicely formed, pure white triandrus hybrid. Smoother and broader petals than most of its type. 50c each.

**NOR NOR** (G. L. Wilson) 1941. 2a. LM. 12". Pale yellow with perianth fading to cream, and crown that deepens with age to light orange. One of the smaller Daffodils. 20c each.

**OCONEE** (Powell) 1939. 5b. LM. 16". A most unusual flower with reflexing white perianth, and saucer shaped light yellow crown. Two or three blooms to a stem. Withdrawn for increase.

**ORAN** (Richardson) 1944. 3b. LM. 18". Rounded white perianth with orange red banded, citron crown. Somewhat better grower than some of its class. 50c each.

**ORANGE QUEEN** (Goodwin) 1908. 7b. M. 12". A very pretty little jonquil with clusters of intense orange gold blooms. Very fragrant. 20c each.

**ORTONA** (Richardson) 1945. 3b. L. 20". Good sized, pure white perianth, and orange red cup with green center. \$1.00 each.

**OTRANTO** (Richardson) 1944. 3b. L. 20". Fine large white perianth, well overlapping and of good substance, and nearly flat frilled red crown shading to gold at the center. \$1.50 each.

**PALESTINE** (Richardson) 1951. 2a. LM. 20". Very good smooth flat yellow perianth, and crown of bright orange, with gold base. \$6.00 each.

**PAPANUI QUEEN** (Lewis) 1939. 2b. L. 20". Very large, rounded, flat white perianth with saucer shaped lemon crown. A splendid flower. Withdrawn for increase.

**PAPRIKA** (Richardson) 1941. 3b. L. 21". Snow white perianth of good quality, and flat, saucer shaped crown of brick red. 80c each.

**PARICUTIN**, see page 5.

**PARKMORE** (G. L. Wilson) 1945. 2c. E. 21". Broad, smooth, flat, pure white perianth, and very pale yellow crown, fading to white. An excellent high quality flower. A few bulbs only. \$2.50 each.

**PAUL BUNYAN**, see page 5.

**PEARL HARBOR** (G. L. Wilson) 1943. 1c. LM. 20". There are many good white Daffodils but this blooms after most of the others are past their prime and it is such an effective garden flower, we feel it worth a place in every fancier's garden. A very large ivory white flower of good form and lots of substance. Strong stems and vigorous grower. Because of the good demand and shortage of stock, we are withdrawing this for increase this year.

**PENCREBAR** (unknown) 1929. 4. M. 8". A very pretty little double golden yellow jonquil. 60c each.

**PENTUCKET** (Powell) 1929. 9. L. 16". A very pretty little poet. 40c each.

**PENVOSE** (Williams) 1927. 2b. EM. 22". A remarkable and distinct flower. Broad, flat white perianth standing at right angles to the rather long crown which is yellow on opening but passes to rich cheese buff as it develops. Very heavily frilled and ruffled. Good for hybridizing. 30c each.

**PEPPER** (J. C. Williams) 1933. 2a. EM. 15". Classed with the dwarf Daffodils, this is somewhat larger than most true dwarfs. Quite a brilliant bit of coloring. 30c each.

**PERA** (Brodie) 1927. 3b. L. 18". Smooth, perfect, white perianth, and vivid dark orange red eye. Rather small. 30c each.

**PETSAMO** (Richardson) 1944. 1c. EM. 19". A magnificent flower with broad, widely overlapping, very smooth, white perianth, and a nicely proportioned, flaring white trumpet. \$6.00 each.

**PHILTATON** (Uit den Boogaard) 1949. 2b. M. 18". A John Evelyn hybrid with flat, quite smooth, white perianth, and large, expanded, flat orange crown. Quite striking. 25c each; \$2.50 per dozen.

**PICADOR** (Williams) 1910. 3b. L. 16". A lovely small white flower with green centered, orange banded cup. Old, but very good. 60c each.

**PINK A DELL** (Brown) 1935. 2b. M. 20". One of the larger pinks, and one that borders on trumpet form. The large white perianth is of good quality; the long flared crown opening pale yellow but becoming flushed more or less with pink as it ages, particularly on the side. Coloring varies much with the weather and seasonal conditions. 80c each.

**PINK LACE**, see page 5.

**PINK LADY** (Adams) 1916. 1b. M. 20". One of the few pink trumpet varieties. While it does not have very much color, it is a large flower of fairly good form, and has an unusual frilled and lacinated trumpet, and has given us some very nice seedlings. 50c each.

**PINWHEEL**, see page 5.

**PLAY BOY** (G. L. Wilson) 1944. 2a. M. 22". Very large flower much like Carbineer in form and substance. Not quite as highly colored as Carbineer at its best, but this is a much larger flower of wonderful balance. 50c each.

**POLAR SEA** (Brodie) 1933. 3c. L. 18". Glistening pure white perianth, and a pure white crown with green eye. Very graceful. 60c each.

**POLAR STAR** (Oregon Bulb Farms) 1946. 2b. LM. Rather late flower of Tunis character, with star-like, white perianth, and lemon crown which fades to white except at the rim. \$2.50 each.

**POLINDRA** (Williams) 1927. 2b. M. 24". A grand, almost flawless flower. Very tall, strong stems with large flowers, having satin smooth, flat, widely overlapping white perianth, and a finely proportioned lemon yellow crown. Certainly one of the very finest of all Daffodils. 30c each; \$3.00 per dozen.

**PORTHILLY** (Williams) 1927. 2a. EM. 19". Good sized flowers of rich yellow and brilliant orange red coloring. A splendid cut flower. Very prolific. 25c each; \$2.50 per dozen.

**PREAMBLE** (G. L. Wilson) 1946. 1b. E. 22". Superbly beautiful, perfectly balanced bicolor trumpet. High quality, combined with striking contrast in color. \$6.50 each.

**RADIATION**, see page 5.

**RAPHOE** (G. L. Wilson) 1948. 2b. LM. 20". Nicely proportioned flower with white perianth, and pale lemon crown, deeper yellow near the frilled border. Very graceful, and pleasing color combination. \$1.00 each.

**RASHEE** (G. L. Wilson) 1955. 1c. M. 18". One of the finest new white trumpets. Only a bulb or two to go. \$60.00 each.

**RATHKENNY** (G. L. Wilson) 1938. 1b. M. 20". A very strongly contrasted bicolor trumpet. White, flat perianth; trumpet of rich gold. 75c each.

**RED RIBAND** (Brodie) 1935. 2a. M. 24". A flower near the size of Fortune, with flat, light yellow perianth; crown yellow with a very distinct band of orange red at the margin. An excellent garden flower. Very prolific. 25c each.

**RED HACKLE** (Brodie) 1937. 2b. LM. 20". A large flower of graceful proportions and carriage, with a rather pointed, slightly reflexed, pure white perianth, and solid red crown. 60c each.



**GOLD CROWN** — Page 10

**RIMA**, see page 3.

**RIOTOUS** (Oregon Bulb Farms) 1946. 4. M. 21". An early, tall, large semi-double, deep yellow petals interspersed with sulphur yellow ones. \$4.00 each.

**ROCKERY GEM** (van der Schoot) 1930. 1c. EM. 9". A dwarf flower, opening with pale yellow trumpet which fades to white. 50c each.

**ROCKERY WHITE** (G. Zandbergen) 1936. 1c. EM. 6". Another small white flower, this reputed to be a seedling of *N. nanus*. 40c each.

**ROIMOND** (Richardson) 1948. 2b. L. 19". A fine red and white flower with broad, smooth perianth, and good sized bowl shaped crown, which opens greenish orange, but develops to non-fading orange red. Should not be picked until the color develops. \$12.00 each.

**ROMAN CANDLE** (Oregon Bulb Farms) 1950. 2b. M. 19". A large flower with rounded white perianth, and large crown that opens apricot pink and develops to deeper pink. \$6.00 each.

**ROSARIO** (Radcliff) 1940. 2b. M. 17". Beautiful, very smooth, flat, pure white perianth, with trumpet-like crown, suffused with rich pink. Probably the best quality pink Daffodil we grow but not as dependable in its coloring as some others. Small stock. \$3.75 each.

**ROSEANNA** (G. L. Wilson) 1955. 2b. LM. 14". A very pretty little flower with white perianth, and pink crown rather like Wild Rose. \$2.00 each.

**ROSE CAPRICE** (Richardson) 1955. 2b. LM. 20". A descendant of Green Island with much of its broad, rounded, overlapping perianth. Crown is quite rich pink down to the green base. Very good. Only a bulb or two to spare this year at \$40.00 each.

**ROSEDOWN** (Alec Gray) 1949. 5b. LM. 18". The only orange cupped triandrus hybrid that we list. Perianths are clear yellow with goblet shaped crowns of pale, to fairly deep orange, depending on the weather. Prolific. 50c each.

**ROSEGARLAND** (Richardson) 1941. 2b. LM. 20". Good tall stems, with well formed flowers having broad, flat, white perianths, and pale lemon crowns which develop into quite rich pink coloring in favorable seasons. \$2.00 each.

**ROSEMORRAN GIANT** (Dawson) 1927. 1b. M. 16". Large white perianth, and a long, slender rich yellow trumpet. Not equal to some of the new ones in form, but with a strong contrast of coloring. 80c each.

**ROSE OF TRALEE** (Richardson) 1937. 2b. L. 16". Large flowers of excellent form, the perianth being very smooth, broad, and usually quite flat; the long crown is heavily flushed with rosy apricot pink. Flowers have nice poise and carriage, and are worth growing even if they were devoid of color. Gives good seedlings. 75c each.

**ROSE RIBBON**, see page 5.

**ROUGE** (G. L. Wilson) 1936. 2a. E. 17". One of the first of the red cups to flower. Nicely formed, overlapping buff yellow perianth, and brick red crown. Prolific grower and increaser. 25c each.

**ROYAL CHARGER** (Richardson) 1955. 2a. M. 19". One of the best yellow red Daffodils. Only a bulb or two. \$35.00 each.

**ROYAL MAIL** (Richardson) 1937. 2a. M. 20". One of the most striking of the red and yellows, this having a rich bright yellow perianth, and strong-contrasting deep orange red crown. 75c each.

**ROYAL RANSOM** (Richardson) 1937. 2a. M. 21". Perfectly formed soft buff perianth, and rich orange red crown. A beautiful flower but not a good increaser and it makes poor looking bulbs. \$2.50 each.

**RUBRA** (Brown) 1933. 2b. LM. 24". Large flowers of utmost refinement, having broad, overlapping, silken smooth, white perianth, and a crown of primrose apricot, bordered apricot orange; or sometimes the darker color predominates over the entire cup. Prolific. Strikingly beautiful for cutting, and one of the most valuable for breeding as it is a free seeder and gives good progeny. 35c each; \$3.50 per dozen.

**RUSTOM PASHA** (Miss Evelyn) 1930. 2a. M. 22". Large flowers of deep, intense golden yellow, and a much deeper gold cup that turns to orange red as it ages. Gives seedlings of weather resistant coloring. 40c each.

**SACAJAWEA**, see page 5.

**ST. AGNES** (Williams) 1926. 8. M. 22". Two or three nice sized white flowers with red eyes carried on tall stems. 20c each.

**ST. KEVERNE** (M. P. Williams) 1949. 2a. EM. 20". A good pure, rich deep yellow throughout, the perianth being flat and overlapping, with much substance, and the long crown having a frilled mouth. A very few at \$8.00 each.

**ST. MARY** (G. L. Wilson) 1944. 1c. M. 19". Good quality white trumpet. \$1.40 each.

**SALMON TROUT** (Richardson) 1948. 2b. M. 17". One of the very best of the pink Daffodils. Good sized, flat, white perianth, and a well proportioned large crown, opening pale yellow with apricot tinge, and becoming rich salmon pink. Good substance. \$60.00 each.

**SALTASH** (Williams) 1933. 2a. M. 22". Another good yellow-red with deep yellow perianth and brilliant orange red crown. 50c each.

**SAMARIA** (Brodie) 1923. 3c. L. 19". One of our favorites for cutting. A nice rounded milk white flower with small fluted eye with green in the center. 35c each, 3 for \$1.00.

**SAMITE** (G. L. Wilson) 1930. 1c. M. 17". A good quality, smooth white trumpet Daffodil descended from Beersheba. 50c each.

**SANTIAM**, see page 5.

**SATIN QUEEN** (Lewis) 1940. 2b. L. 20". Large, smooth, widely overlapping, white perianth; good sized, almost flat crown of yellow with a narrow orange frill. \$5.00 each.

**SCANDAL** (G. L. Wilson) 1930. 3b. L. 19". Large white flower with orange scarlet crown. 40c each.

**SCARLET LEADER** (Backhouse) 1933. 2a. EM. 18". One of the most colorful varieties with its large cream perianth, and large, nearly flat, frilled, vivid orange red crown. 35c each.

**SEBASTOPOL** (Richardson) 1945. 2b. LM. 21". A flower similar in color to Polindra, and of excellent form. At its best, this is one of the very finest in its class. \$1.00 each.

**SELMA LAGERLOF** (Lefeber) 1938. 2b. M. 20". Large white perianth, and a large flaring crown of orange, or with orange band and yellow base, depending on weather conditions at blooming time. A very striking flower of the John Evelyn type, and being one of the most prolific of all the Daffodils we grow, it should prove very popular as a garden flower. 25c each; \$2.50 per dozen.

**SEOUL**, see page 5.

**SHADEEN** (G. L. Wilson) 1943. 2b. LM. 15". White perianth of nice form with a well balanced, creamy buff crown. Has given some nice pink seedlings. 20c each.

**SHANACH** (G. L. Wilson) 1939. 9. L. 18". Circular, smooth, pure white perianth; citron yellow eye, edged red. 35c each.

## Small Cup Collection

ALBERNI BEAUTY	MYSTIC
ANGELINE	POLAR SEA
BANTRY	SAMARIA
BLINKBONNY	SILVERMINE
DREAMLIGHT	SILVER PLANE
MISTY MOON	SILVER SALVER
MR. JINKS	TINSEL

One bulb of each of these  
valued at \$5.40, for **\$4.00**





ROSE RIBBON — Page 5

**SHANGHAI** (Warnaar) 1933. 2a. EM. 23". Giant clear yellow, being one of the largest Daffodils we grow. Rather like Carlton in form but a little larger and smoother textured. \$1.50 each.

**SHIRLEY NEALE** (Brown) 195?. 2b. M. 25". Exceptionally tall, strong, thick stems hold the large flowers well erect. Flat, white perianth of good size, and a large, nearly flat, saucer-like crown which varies from deep yellow to light salmon orange with lighter throat. 30c each.

**SHIRLEY WYNESS** (West & Fell) 1935. 2b. M. 18". A pretty graceful flower with well formed white perianth, and a most heavily frilled and ruffled lemon crown, suffused pink. This gives very interesting seedlings, many in the pink shades. 30c each.

**SHOT TOWER** (Clark). 2b. LM. 17". Unique among the pink Daffodils, this has a large crown, almost of trumpet proportions, with a broad base, and much flared flange, making it of true bell-shape. Perianth ivory white, and crown of salmon pink, the color varying with weather conditions. This has given many interesting seedlings. \$4.00 each.

**SIGNAL LIGHT** (Richardson) 1948. 2b. M. 20". One of the largest and best of the red and white Daffodils. The broad, overlapping, smooth, white perianth is of fine substance and quality. The large flaring crown is of rich orange red and appears to be very weather resistant. None to offer this year.

**SILVER CHIMES** (Martin) 1916. 5b. LM. 18". A lovely triandrus hybrid, entirely different from all others that we have seen. Each stem carries five to ten or more well formed, fragrant, creamy white blooms. In colder areas it should be mulched. 40c each.

**SILVERDALE**, see page 5.

**SILVERMINE** (G. L. Wilson) 1937. 3c. L. 17". Pure, immaculate white flower with a green eye. Very lovely. 35c each.

**SILVER PLANE** (Lowe) 1927. 3b. LM. 18". Very pretty decorative flower with flat, white perianth, and a good sized saucer-shaped lemon yellow crown. A nice cut flower. 25c each.

**SILVER SALVER** (Brodie) 1922. 3c. LM. 15". Glistening white throughout except for the cool green eye. Very lovely. 50c each.

**SILVER WEDDING** (G. L. Wilson) 1938. 1c. M. 17". Rather small, smooth flower considerably like China Clay in general appearance. 70c each.

**SLIGO** (Richardson) 1943. 2a. LM. 21". A fine rich deep yellow after the style of Galway but later blooming. \$1.60 each.

**SPELLBINDER** (G. L. Wilson) 1944. 1d. EM. 20". Possibly the first high quality reverse bicolor trumpet to be introduced. Perianth of rich sulphur lemon, and trumpet of similar shade, fading to almost white inside. Only a few bulbs. \$6.50 each.

**SPITZBERGEN** (Richardson) 1943. 1b. LM. 21". One of the three or four best bicolor trumpets we have grown, although this does not have much contrast in coloring and might easily pass for a white. Beautiful, broad, smooth, white perianth, and a pale primrose trumpet fading to almost white. \$2.25 each.

**SPRING SONG**, see page 3.

**STATUE** (Richardson) 1938. 2b. M. 24". This has been described as a glorified Polindra, and while much like it in color, this is considerably different in form. A magnificent flower. \$5.00 each.

**SUDAN** (Richardson) 1938. 2a. LM. 20". Bright lemon yellow perianth of beautiful form and quality, and a clean cut, almost ruby red crown. 70c each.

**SUNBURST** (Oregon Bulb Farms) 1950. 4. EM. 24". The giant of all the doubles. Enormous peony-type flowers on tall stems, with petals of sulphur yellow interspersed with deep yellows. A really huge flower. Order early if you want this as we have but few bulbs. \$8.00 each.

**SUN CHARIOT** (Richardson) 1943. 2a. EM. 21". Very large flat perianth of intense golden yellow, and a large fiery orange red crown. Holds its color well. \$5.00 each.

**SUN DISC** (Alec Gray) 1946. 7b. L. 6". A perfectly formed little Daffodil with broad, very flat perianth, and nearly flat, saucer-like crown. Light yellow. A most dainty little flower. \$1.00 each.

**SWANSDOWN** (Brodie) 1939. 4. LM. 16". Very distinct is this double with its rounded, pure white perianth, and large tuft of feathery white petals in the center. Stock remains short due to demand. \$5.00 each.

**SYLVIA O'NEILL** (G. L. Wilson) 1940. 3b. LM. 21". A lovely flower for either exhibition or cutting. Large, but graceful, smooth white perianth; shallow white crown frilled with clear pale lemon. Fine for breeding. Makes rather a small percentage of double nose bulbs. 50c each.

**TAMINO** (Brodie) 1939. 2a. M. 17". Of ideal form for exhibition, this is a consistent producer of flower of high quality, with very rounded, much overlapping, smooth flat perianths of deep yellow; large, nearly flat crowns of deep orange red. \$1.10 each.

**TEBOURBA** (Richardson) 1944. 3b. LM. 21". Good sized flower with excellent, flat, white perianth, and solid, vivid red crown. 75c each.

**THALIA** (van Waveren) 1916. 5a. LM. 21". Clusters of drooping, very white flowers, borne on tall stems. A beautiful flower for cutting, and one of the best of the triandrus hybrids. Although old, it surpasses in grace many of the newer ones. 20c each; \$2.00 per dozen.

**THE KNAVE** (Coleman). 6a. EM. 12". An unusual little cyclamineus hybrid with reflexing white perianth and ivory cream crown. \$2.50 each.

**TINKER** (G. L. Wilson) 1937. 2a. EM. 21". Large, brilliantly colored flower with rich yellow perianth of good form, and a glowing orange red crown. 40c each.

**TINSEL** (G. L. Wilson) 1940. 3b. M. 19". Similar to Sylvia O'Neill but a somewhat better grower. Edging of the crown, bright gold, but white otherwise. 65c each.

**TOBRUK** (Richardson) 1941. 3b. LM. 20". A nice flower with pure white, rounded, flat perianth, and a small flat cup of brilliant red with greenish center. 75c each.

**TRAMORE** (Richardson) 1940. 2b. EM. 22". Another good white and yellow, with somewhat larger flower than Polindra, the perianth segments being longer. Quite long crown. \$1.00 each.

**TREASURE** (Lewis). 1a. LM. 17". One of the smoothest yellow trumpets, this blooms later than most of its class. \$3.00 each.

## Unusual Collection

APRIL TEARS	MABEL TAYLOR
BINKIE	PENVOSE
CHERIE	SILVER CHIMES
DAWN	WALTER J. SMITH
IRENE COPELAND	YELLOW CHEERFULNESS

One of each of these  
valued at \$7.60, for **\$5.90**

**TREVITHIAN** (Williams) 1927. 7b. EM. 23". Among the most beautiful of the jonquils. Clean, smooth, soft yellow throughout, with short cups. Sweet scented flowers borne usually in twos and threes. 25c each; 3 for 70c.

**TREWIRGIE** (P. D. Williams) 1928. 6a. EM. 12". A very attractive, clear, rich yellow flower of typical cyclamineus type with gracefully reflexed perianth. Better form than the average. \$2.00 each.

**TRIM** (P. D. Williams) 1943. 7b. M. 22". Another good jonquil, this more often has only one or two blooms to a stem. Deep yellow perianth; orange cups. 30c each.

**TROSTAN** (G. L. Wilson) 1938. 1b. M. 22". Though pale enough in color to go as a white trumpet, this is classed as a bicolor. A splendid flower with strong stiff stems holding the large flowers above the foliage, making a splendid garden showing; and it is invaluable for hybridizing. 70c each.

**TROUSSEAU** (P. D. Williams) 1934. 1b. E. 22". A good sized flower of very smooth finish, fine substance, and high quality. Flat white perianth; trumpet of soft yellow, passing to creamy buff as it ages. When at its best, a very lovely flower. \$1.75 each.

**TRUTH** (G. L. Wilson) 1936. 2c. M. 22". One of the finest white Daffodils on the market. The perianth is very broad and overlapping, being of fine substance, and satin smooth finish. The large crown is of trumpet character, and is very well proportioned. Superb when grown in pots. \$1.00 each.

**TRYST** (G. L. Wilson) 1944. 2b. LM. 21". Formerly classed as a small cupped variety, this borderline flower is now placed with the large cups. It has a fine flat, white perianth, very rounded in form, and a faint primrose, frilled cup. Gives good seedlings. \$2.50 each.

**TUDOR MINSTREL** (Richardson) 1948. 2b. M. 22". A most outstanding new bicolor, with very broad, flat, smooth, white perianth, about five inches in diameter, with fine quality and substance. The large somewhat frilled cup is of rich deep yellow. Wonderful exhibition flower. \$17.00 each.

## NARCISSUS SPECIES

In addition to the species we are listing, we are growing a number more, some of which will be added as stocks increase. Some such as *N. cyclamineus* and *N. minimus* are considerably higher in price than imported bulbs but many of the latter are collected wild bulbs. We make no claims for the performance of ours but think they have a better chance of giving good bloom the first year than collected bulbs. Stocks are quite limited, and we hope to replant bulbs early.

**N. Bulbocodium conspicuus**—The yellow hoop petticoat Daffodil. Narrow, inconspicuous petals and large trumpet. About 8 inches. 10c each; \$1.00 per dozen.

**N. Canaliculatus**—A miniature "Chinese Lily" or tazetta hybrid. Small white flower with yellow cups borne in clusters. Not a free bloomer everywhere. 10c each, \$1.00 per dozen.

**N. cyclamineus**—A perky little flower growing about six inches tall, with narrow, extremely reflexed perianth, and long trumpet-like crown with flanged rim. Not happy everywhere but a delightful elfin flower where it succeeds. 30c each.

**N. Jonquilla simplex**—Clusters of very sweetly scented small deep yellow flowers. 10c each; \$1.00 per dozen.

**TUNIS** (P. D. Williams) 1927. 2b. EM. 22". A grand flower with large creamy white perianth; light yellow crown, fading to ivory cream, except for the flanged rim which develops to apricot buff as the flower ages. 20c each; \$2.00 per dozen.

**TUSKAR LIGHT** (Richardson) 1937. 2b. LM. 19". A giant flower with wide spread, flat, white perianth; big, saucer-shaped crown of yellow, broadly banded orange red. Very striking although it faces downwards somewhat the first few days after opening. 75c each.

**WALTER J. SMITH** (Brown) 1935. 2b. M. 22". Has a large flat, but narrow perianth, not infrequently with extra petals, and a very large, extremely heavily frilled pale lemon crown. 65c each.

**WATERVILLE** (Richardson) 1943. 2c. LM. 20". This bears considerable resemblance to Green Island, and is a most beautiful flower. \$2.00 each.

**WEE BEE** (Zandbergen) 1948. 1a. EM. 5". A nicely formed, pale yellow, miniature Daffodil. 65c each.

**WHITE MONARCH** (G. L. Wilson) 1948. 1c. M. 17". Though not very tall, this is perhaps the largest of all white trumpets. Very white and quite good, although somewhat ungainly. Introduced from Holland at \$250.00 per bulb several years ago. \$20.00 each.

**WHITE PROSPECT** (J. L. Richardson) 1948. 1c. M. 22". One of the finest white trumpets. Held for increase.

**WHITE SENTINEL**, see page 3.

**WHITE WEDGEWOOD** (de Graaff). 7b. LM. 18". A pale yellow to ivory Jonquil that is no longer widely grown, but is still in demand because there are so few flowers of its type. 45c each.

**WILD ROSE** (Brodie) 1939. 2b. LM. 18". A small to medium sized flower of quite good form, having a pure white perianth, and a good sized crown of pink. Under favorable conditions, it becomes deep, almost wild-rose pink. We have used it much in breeding and have had numbers of good seedlings from it. 75c each.

**WILLAMETTE**, see page 5.

**YELLOW CHEERFULNESS** (Eggink Bros.) 1934. 4. M. 22". A delightful flower with clusters of small double blossoms like its counterpart, Cheerfulness, except in color, this being an attractive shade of yellow. 25c each.

**YELLOW WARBLER**, see page 5.

**ZERO** (G. L. Wilson) 1935, 2c. E. 24". A magnificent, giant snowy white flower. Flat, overlapping perianth with pointed peals, and a long, well balanced, nicely frilled crown. This is very white on first opening and lasts a long time. A really fine white Daffodil. \$4.50 each.

**ZEST**, see page 5.

**ZIRCON** (Oregon Bulb Farms) 1945. 2b. Flat white perianth of good substance, and large crown of rich deep yellow. Strong grower, making it a good garden flower. \$3.50 each.

**N. Juncifolius**—A miniature jonquil with one to three tiny sweet scented blossoms on each stem. Comes easily from seed but usually not very long lived. 20c each.

**N. Maximus superbus**—Botanically this is *N. hispanicus*, the giant of the trumpet species. The ancestor of most modern yellow trumpets. 15c each.

**N. minimus (asturiensis)**—The smallest of the trumpet Daffodils. A real treasure. Considerable variation in form. Clear pure yellow. 3 inches. 20c each.

**N. minor**—Another little trumpet growing to about four inches. Very few to spare. 50c each.

**N. nanus**—Very nicely formed with flat, smooth perianth. Rapid increaser but not always free in bloom. About 8 inches high. 20c each.

**N. pumilus**—Next to minor in size. A very few to go. 50c each.

**N. Pumilus plenus**—A double form of one of the dwarf species. Very double flowers resembling a giant dandelion with some green petals. Not pretty, but a curious little flower. 20c each.

**N. watieri**—Similar to *N. juncifolius* in form, but a little larger, pure white, and with but one flower to a stem. One of the loveliest of all the little ones. 25c each.

# '56 MIXTURES

From our testing grounds, we have thousands of seedlings yearly which are of insufficient merit to warrant selection with a view to further observation and perhaps eventual introduction, and among these are many that are as fine as ordinary named varieties; some proving later to be better than some that were selected and moved to our secondary trial plantings. These bulbs are placed together and sold as our **GENERAL MIXTURE**.

Out of the many seedlings grown, there are usually two to four hundred selected for further trial each year, but after from two to five or six years or even longer, most of these are deemed to be of insufficient merit, or not sufficiently distinct from the best varieties on the market or other seedlings still carried on, and these, which in most cases, have increased a great deal, are dumped together and offered now as our **BETTER MIXTURE**.

Then there are a few seedlings that are especially striking or interesting for some reason from which we select one bulb of each to go into our **SELECT MIXTURE**.

Having done a good deal of breeding for pinks, there are naturally hundreds of seedlings with more or less pink, salmon, buff, and apricot tones that have been selected over a period of years, most of which are obviously unworthy of introduction. Some of

these will doubtless not show any pink tones in some localities and during some seasons, and it is possible that a few in the mixture may show no color under favorable conditions, but there are a great many very interesting flowers in this lot. They are offered this year as our **PINK MIXTURE**.

In addition, we have a **RED CUP MIXTURE**, and **SMALL CUP MIXTURE**, the latter being largely Poeticus types. Much that is said about the **PINK MIXTURE** applies to these as well as there may be an occasional off colored or off-type flower in each group.

These mixtures are offered as follows:

**GENERAL MIXTURE.** 25 double nose bulbs for \$3.00; \$10.50 per 100 prepaid. Round bulbs and large slabs, \$6.50 per 100 prepaid.

**BETTER MIXTURE.** \$2.50 per dozen.

**SELECT MIXTURE.** \$3.50 per dozen; \$6.50 per two dozen, all different.

**PINK MIXTURE.** \$2.50 per dozen.

**RED CUP MIXTURE.** \$3.00 per dozen.

**SMALL CUP MIXTURE.** \$2.50 per dozen.

## REVISED SYSTEM FOR THE CLASSIFICATION OF DAFFODILS

In Use Since January 1, 1950

- (i) "Colored" means yellow or some other color than white.
- (ii) "White" means white or whitish.
- (iii) The length of a perianth segment is the extreme length measured on the inside from its junction with the corona along the midrib to the extreme tip, and the length of the corona is the extreme length measured from its junction with the perianth to the end of its furthest extension when the edge is flattened out.

### Division 1 — TRUMPET NARCISSI of Garden Origin

Distinguishing characters: One flower to a stem; Trumpet or Corona as long or longer than the Perianth segments.

- (a) Perianth colored; Corona colored, not paler than the Perianth.
- (b) Perianth white; Corona colored.
- (c) Perianth white; Corona white, not paler than the Perianth.
- (d) Any color combination not falling into (a), (b), or (c).

### Div. 2 — LARGE-CUPPED NARCISSI of Garden Origin

Distinguishing characters: One flower to a stem; Cup or Corona more than one-third, but less than equal to the length of the Perianth segments.

- (a) Perianth colored, Corona colored, not paler than the Perianth.
- (b) Perianth white; Corona colored.
- (c) Perianth white; Corona white, not paler than the Perianth.
- (d) Any color combination not falling into (a), (b), or (c).

### Div. 3 — SMALL-CUPPED NARCISSI of Garden Origin

Distinguishing characters: One flower to a stem; Cup or Corona not more than one-third the length of the Perianth segments.

- (a) Perianth colored; Corona colored, not paler than the Perianth.
- (b) Perianth white; Corona colored.
- (c) Perianth white; Corona white, not paler than the Perianth.
- (d) Any color combination not falling into (a), (b), or (c).

### Division 4 — DOUBLE NARCISSI of Garden Origin

Distinguishing character: Double flowers.

### Division 5 — TRIANDRUS NARCISSI of Garden Origin

Distinguishing characters: Characteristics of *Narcissus triandrus* clearly evident.

- (a) Cup or Corona not less than two-thirds the length of the Perianth segments.
- (b) Cup or Corona less than two-thirds the length of the Perianth segments.

### Div. 6 — CYCLAMINEUS NARCISSI of Garden Origin

Distinguishing characters: Characteristics of *Narcissus cyclamineus* clearly evident.

- (a) Cup or Corona not less than two-thirds the length of the Perianth segments.
- (b) Cup or Corona less than two-thirds the length of the Perianth segments.

### Div. 7 — JONQUILLA NARCISSI of Garden Origin

Distinguishing characters: Characteristics of any of the *Narcissus Jonquilla* group clearly evident.

- (a) Cup or Corona not less than two-thirds the length of the Perianth segments.
- (b) Cup or Corona less than two-thirds the length of the Perianth segments.

### Division 8 — TAZETTA NARCISSI of Garden Origin

Distinguishing characters: Characteristics of the *Narcissus Tazetta* group clearly evident.

### Division 9 — POETICUS NARCISSI of Garden Origin

Distinguishing characters: Characteristics of the *Narcissus poeticus* group without admixture of any other.

### Div. 10 — SPECIES and WILD FORMS and HYBRIDS

All species and wild, or reputedly wild, forms and hybrids.

### Division 11 — MISCELLANEOUS NARCISSI

All Narcissi not falling into any of the foregoing Divisions.

## DAFFODIL BOOKS

"DAFFODILS"—M. J. Jefferson-Brown \$4.50

The most authoritative and complete book on Daffodils to our knowledge. Well written and superbly illustrated, it is a comprehensive store of useful information for Daffodil fanciers, giving points on classification, culture, exhibiting, breeding, and many other interesting facts. The chapter on Dwarf Narcissi for the Rock Garden is noteworthy. Those interested in hybridizing and botanical structure and relationships among Narcissi should find the section on cytology useful. The newest British Daffodils and breeding work with them are discussed.

"DAFFODILS FOR AMATEURS"—M. J. Jefferson-Brown \$1.35

A smaller book by the same author, this one is designed for less experienced gardeners and places most emphasis on problems of culture, both in the garden and with potted bulbs.

"MINIATURE DAFFODILS"—Alec Gray \$3.75

Though a small volume, this book gives much information relative to general culture, growing from seed, hybridizing, and varieties and species of the little Daffodils. Mr. Gray is an authority with many years of experience, specializing in these dwarf varieties. A number are illustrated.

1957 DAFFODIL AND TULIP YEARBOOK of the

Royal Horticultural Society of England \$2.00

"GARDEN BULBS IN COLOR"—Daniel J. Foley \$3.95

Not so specific in its coverage as the books named above, this is a well illustrated volume having about 275 color plates of all types of flowering bulbs in addition to many black and white photographs. Text evaluates varieties and gives cultural instructions.

"PRACTICAL PLANT BREEDING"—W. J. C. Lawrence \$2.00

Most avid gardeners, particularly those whose interest is tied to one or two groups of plants, sooner or later want to try their hand at hybridizing. To them we would suggest this book to acquire some practical ideas as to how to proceed with their hobby. And there will doubtless be some pointers for those who have already engaged in this fascinating pastime.

R.H.S. Check List of Daffodils—This small book gives the names, classification, originators, and introducers of most of the Daffodil varieties in commerce. Copies at \$1.00 each.

# DAFFODILS GROUPED TO AID IN YOUR SELECTIONS

In the groups given below, we have attempted to combine in sections, those varieties that excel in or exemplify some given characteristic. This does not mean that there are not other varieties fully as worthy of inclusion in a given group as those named, but an attempt has been made to list some of the varieties that, in our opinion, rate highest or deserve mentioning in their respective qualifications. We have made an effort to include varieties of the various R.H.S. classifications, both new and old kinds, to guide fanciers in making their selections. No doubt our selections would not coincide with those made by others, and our own opinions change from time to time.

## MOST BEAUTIFUL

Angeline, April Tears, Ardour, Armada, Artist's Model, Autowin, Bantry, Beersheba, Binkie, Bithynia, Blarney, Blarney's Daughter, Bodilly, Brambling, Bryher, California Gold, Cantabile, Cantatrice, Caro Nome, Ceylon, Charity May, Chinese White, Coloratura, Content, Coolin, Crete, Cushendall, Diolite, Dove Wings, Dreamlight, Fairy Circle, Fairy Dream, Festivity, Flamingo, Foggy Dew, Frigid, Frivolity, Galway, Glenshane, Green Island, Hawera, Kilmorna, La Belle, Lemon Meringue, Limerick, Lough Arema, Ludlow, Luna Moth, Lunar Sea, Madrigal, Marie Louise, Matapan, Moonstruck, Narvik, Picador, Playboy, Polindra, Preamble, Radiation, Rima, Rosario, Rose Caprice, Rubra, Salmon Trout, Samaria, Satin Queen, Silver Chimes, Silver Salver, Spellbinder, Swansdown, Tamino, Thalia, Tinsel, Trousseau, Truth, Tryst, Tudor Minstrel.

## MOST SHOWY

Ada Finch, Artist's Model, Bonneville, Carlton, Chinook, Coronado, Duke of Windsor, Flying Saucer, Fortune, Galway, Garland, Green Emerald, Hugh Poate, Kanchenjunga, Kandahar, Krakatoa, Lebanon, Linn, Mabel Taylor, Madrigal, Majarde, Paricutin, Paul Bunyan, Pinwheel, Riotous, Rose Ribbon, Selma Lagerlof, Seoul, Shanghai, Signal Light, Sunburst, Walter J. Smith.

## TALLEST

Ardour, Bodilly, Broughshane, Camberwell King, Content, Diolite, Diotima, Duke of Windsor, Fortune, Hong Kong, Kibo, Klingo, Lunar Sea, Malvern Gold, Penvose, Polindra, Rose Ribbon, Rubra, Sacajawea, Shirley Neale, Statue, Sunburst, Trevithian, Trim, Trostan, Tunis, White Sentinel, Willamette, Zero, Zest.

## LARGEST

Ben Hur, Bonneville, Broughshane, Carlton, Coverack Perfection, Diotima, Duke of Windsor, Dunseverick, Festivity, Hugh Poate, Illuminate, Kanchenjunga, Kibo, Killaloe, Luna Moth, Moonstruck, Papanui Queen, Paul Bunyan, Shanghai, Statue, Sunburst, Tamore, Tudor Minstrel, White Monarch, Zero.

## LITTLE DAFFODILS

April Tears, Bambi, Beebop, Beryl, Bobby Soxer, Charity May, Cherie, Cushendall, Cyclataz, Dawn, Dove Wings, Estrellita, Fairy Circle, Goldsithney, Hawera, Hiawassee, Kiowa, La Belle, Lemon Drops, Leprechaun, Lintie, Magherally, Marco, Marionette, Mite, Niveth, Nor Nor, Orange Queen, Pencrebar, Pentucket, Pepper, Picador, Rockery Gem, Rockery White, Rose Down, Sun Disc, The Knave, Wee Bee, Yellow Warbler.

## MOST SUBSTANCE OR GOOD KEEPERS

Aranjuez, Armada, Beersheba, Bizerta, Bodilly, Bonneville, Brunswick, Carbineer, Casabianca, Ceylon, Charity May, Chinook, Cibola, Duke of Windsor, February Gold, Festivity, Fireproof, Flamenco, Fortune's Crest, Galway, Gibraltar, Gold Crown, Golden Goblet, Golden Torch, Green Island, Gusto, Interlude, Jerpoint, Kilmorna, Klingo, Lanarth, Linn, Ludlow, Majarde, Malvern Gold, March Sunshine, Margriet, Milanion, Mulrany, Narvik, Nigeria, Paricutin, Pearl Harbor, Penvose, Philtaton, Playboy, Polindra, Red Riband, Salmon Trout, Scarlet Leader, Seoul, Sligo, Spitzbergen, Statue, Sun Chariot, Trostan, Trousseau, Tunis, Willamette.

## BROADEST PETALS

Aranjuez, Ardour, Artist's Model, Bithynia, Carbineer, Chinese White, Chungking, Clackamas, Coloratura, Dunkeld, Foggy Dew, Galilee, Garland, Gibraltar, Green Island, Hugh Poate, Kanchenjunga, Ludlow, Madrigal, Marie Louise, Misty Moon, Mr. Jinks, Papanui Queen, Paricutin, Petsamo, Playboy, Satin Queen, Seoul, Signal Light, Sylvia O'Neill, Tamino, Tinsel, Tryst.

## BRIGHTEST CUPS

Alemein, Ardour, Armada, Bahram, Blinkbonny, Bombay, Bravura, California Gold, Campfire, Ceylon, Chungking, Clackmar, Dunkeld, Fermoy, Fire Chief, Fire Gleam, Fireproof, Fortune's Crest, Golden Treasure, Illuminate, Indian Summer, Kilworth, Klingo, Krakatoa, Lady Kesteven, Lamington, Leprechaun, Lights Out, Limerick, Magherally, Mahmoud, Market Merry, Matapan, Narvik, Palestine, Paprika, Paricutin, Pepper, Pera, Porthilly, Red Hackle, Roimond, Rouge, Royal Mail, Royal Ransom, Rustom Pasha, Saltash, Scarlet Leader, Signal Light, Sudan, Sun Chariot, Tamino, Tebourba, Tinker, Tobruk, Tuskar Light.

## DEEPEST YELLOWS

Balmoral, Cibola, Crocus, Galway, Gold-digger, Golden Hind, Golden Torch, Gusto, Kingscourt, Milanion, Mulrany, St. Keverne, Sligo, Treasure.

## PUREST WHITES

Ardclinis, Beersheba, Broughshane, Bryher, Cantatrice, Cathedral, China Clay, Chinese White, Coolin, Cushendall, Dunlavin, Evening, Fairy Dream, Foggy Dew, Frigid, Greenland, Hiawassee, Kanchenjunga, Kibo, Killaloe, Ludlow, Nilkanta, Niveth, Petsamo, Polar Sea, St. Mary, Samite, Silvermine, Silver Salver, Silver Wedding, Thalia, Truth, White Monarch, White Prospect, White Tower, Zero.

## PINK OR BUFF TONES

Carnlough, Caro Nome, Cherie, Coronado, Fairy Mother, Fidelis, Flamingo, Foyle, Interim, Interlude, Ischia, Hugh Dettman, Kenmare, Lisbreen, Loch Maree, Mabel Taylor, Mrs. O. Ronalds, Mrs. R. O. Backhouse, Penvose, Pink a Dell, Pink Lace, Pink Lady, Radiation, Rima, Roman Candle, Rosario, Roseanna, Rose Caprice, Rosegarland, Rose of Tralee, Rose Ribbon, Salmon Trout, Shadeen, Shirley Wyness, Shot Tower, Spring Song, Trousseau, Wild Rose.

## EARLIEST

Bambi, Brunswick Cibola, February Gold, Fortune, Frontier, Golden Treasure, Make Up, Malvern Gold, March Sunshine, Mirth, Sacajawea.

## LATEST

Albarni Beauty, Autowin, Bryher, Chinese White, Cushendall, Dreamlight, Foggy Dew, Frigid, Lights Out, Misty Moon, Mystic, Polar Sea, Samaria, Silver Chimes, Silvermine.

## STRONG AND PROLIFIC GROWERS

Angeline, Ardour, Armada, Beersheba, Bodilly, Campfire, Carbineer, Carlton, Cheerfulness, Clackmar, Dick Wellband, Diolite, Duke of Windsor, Dunkeld, Festivity, Fortune, Galway, Hugh Poate, Indian Summer, John Evelyn, Klingo, Late Sun, Limerick, Linn, Mabel Taylor, Market Merry, Mrs. R. O. Backhouse, Narvik, Paricutin, Paul Bunyan, Philtaton, Porthilly, Polindra, Red Riband, Rouge, Rubra, Rustom Pasha, Sacajawea, Selma Lagerlof, Shirley Neale, Silver Chimes, Statue, Tinker, Tunis, Wild Rose, Willamette, Zest.

## PERFECT FORM

Aranjuez, Binkie, Cantatrice, Caro Nome, Chinese White, Coloratura, Fairy Dream, Festivity, Ludlow, Luna Moth, Lunar Sea, Mahmoud, Polindra, Preamble, Rubra, Samaria, Spitzbergen, Sun Disc, Sylvia O'Neill, Tamino, Tinsel, Truth, Waterville.



BINKIE — Page 6

# DAFFODIL VARIETIES LISTED BY CLASSIFICATION

## YELLOW TRUMPETS 1a

BEN HUR  
CAMBERWELL KING  
DIOTIMA  
FRONTIER  
GOLD-DIGGER  
GOLDEN HIND  
HUNTER'S MOON  
KANDAHAR  
KING OF THE NORTH  
KINGSCOURT  
LATE SUN  
LEMON MERINGUE  
LUNA MOTH  
MILANION  
MOONSTRUCK  
PAUL BUNYAN  
TREASURE  
WEE BEE

## BICOLOR TRUMPETS 1b

ARNOLD NEALE  
BALLYFERIS  
BAMBI  
CONTENT  
EFFECTIVE  
FROLIC  
LAPFORD  
MIRTH  
PINK LADY  
PREAMBLE  
RATHKENNY  
RIMA  
ROSEMORRAN GIANT  
SPITZENBERGEN  
TROSTAN  
TROUSSEAU  
ZEST

## WHITE TRUMPETS 1c

ADA FINCH  
ARDCLINIS  
BEERSHEBA  
BROUGHSHANE  
CANTATRICE  
CHINA CLAY  
COOLIN  
FAIRY DREAM  
KANCHENJUNGA  
MOUNT JEFFERSON  
NILKANTA  
PEARL HARBOR  
PETSAMO  
RASHEE  
ROCKERY GEM  
ROCKERY WHITE  
ST. MARY  
SAMITE  
SILVERDALE  
SILVER WEDDING  
WHITE MONARCH  
WHITE PROSPECT

## REVERSE BICOLOR TRUMPETS 1d

LUNAR SEA  
SPELLBINDER

## LARGE CUPS YELLOW PERIANTH 2a

ALEMEIN  
ARANJUEZ  
ARMADA  
BAHRAM  
BALMORAL  
BENGHAZI  
BOMBAY  
CALIFORNIA GOLD  
CAMPFIRE  
CARBINEER  
CARLTON  
CEYLON  
CIBOLA

## LARGE CUPS 2a

(Continued)

CROCUS  
DERVISH  
DIOLITE  
DUNKELD  
FIRE CHIEF  
FIRE GLEAM  
FIREPROOF  
FORTUNE  
FORTUNE'S BOWL  
FORTUNE'S CREST  
GALWAY  
GARLAND  
GIBRALTAR  
GOLDEN TORCH  
GOLDSITHNEY  
GUSTO  
HONG KONG  
HUGH POATE  
ILLUMINATE  
INDIAN SUMMER  
JERPOINT  
KLINGO  
KRAKATOA  
LAMINGTON  
LEPRECHAUN  
MAGHERALLY  
MALVERN GOLD  
MARIONETTE  
MULRANY  
NANKING  
NARVIK  
NIGERIA  
NOR NOR  
PALESTINE  
PARICUTIN  
PEPPER  
PINWHEEL  
PLAYBOY  
PORTHILLY  
RED RIBAND  
ROUGE  
ROYAL CHARGER  
ROYAL MAIL  
ROYAL RANSOM  
RUSTON PASHA  
SACAJAWEA  
ST. KEVERNE  
SALTASH  
SCARLET LEADER  
SEOUL  
SHANGHAI  
SLIGO  
SUDAN  
SUN CHARIOT  
TAMINO  
TINKER

## LARGE CUPS WHITE PERIANTH COLORED CUP 2b

BITHYNIA  
BIZERTA  
BLARNEY'S DAUGHTER  
BODILLY  
BRUNSWICK  
BUNCRANA  
BUNDORAN  
CARDIGAN  
CASABIANCA  
CHINOOK  
CLACKAMAS  
CLEENA  
CORONADO  
CORMEELA  
COVERACK PERFECTION  
CREAM CUP  
DEODORA  
DICK WELLBAND

## LARGE CUPS 2b

(Continued)

DUKE OF WINDSOR  
FAIRY MOTHER  
FERMOY  
FESTIVITY  
FIDELIS  
FLAMENCO  
FLAMINGO  
FLYING SAUCER  
FOYLE  
FRIVOLITY  
GLENSHANE  
GOLD CROWN  
GRACIOUS  
GREEN EMERALD  
GREEN ISLAND  
HOPESAY  
HUGH DETTMAN  
INTERIM  
INTERLUDE  
ISCHIA  
JOHN EVELYN  
KILMORNA  
KILWORTH  
LEBANON  
LINN  
LISBREEN  
LOCH MAREE  
MABEL TAYLOR  
MADRIGAL  
MAJARDE  
MAKE UP  
MARGRIET  
MARIE LOUISE  
MONACO  
MRS. O. RONALDS  
MRS. R. O. BACKHOUSE  
PAPANUI QUEEN  
PENVOSE  
PHILTATON  
PINK A DELL  
PINK LACE  
POLAR STAR  
POLINDRA  
RADIATION  
RAPHOE  
RED HACKLE  
ROIMOND  
ROMAN CANDLE  
ROSARIO  
ROSEANNA  
ROSE CAPRICE  
ROSE GARLAND  
ROSE OF TRALEE  
ROSE RIBBON  
RUBRA  
SALMON TROUT  
SANTIAM  
SATIN QUEEN  
SEBASTOPOL  
SELMA LAGERLOF  
SHADEEN  
SHIRLEY NEALE  
SHIRLEY WYNESS  
SHOT TOWER  
SIGNAL LIGHT  
SPRING SONG  
STATUE  
TRAMORE  
TRYST  
TUDOR MINSTREL  
TUNIS  
TUSKAR LIGHT  
WALTER J. SMITH  
WILD ROSE  
WILLAMETTE  
ZIRCON

## LARGE CUPS ALL WHITE 2c

BONNEVILLE  
CARNLOUGH  
DEW POND  
DUNLAVIN  
DUNSEVERICK  
EVENING  
GREENLAND  
KENMARE  
KIBO  
KILLALOE  
LUDLOW  
NIPHETOS  
PARKMORE  
TRUTH  
WATERVILLE  
WHITE SENTINEL  
ZERO

## LARGE CUPS REVERSE BICOLOR 2d

BINKIE

## SMALL CUPS YELLOW PERIANTH 3a

ARDOUR  
CHUNGKING  
CLACKMAR  
MARKET MERRY

## SMALL CUPS WHITE PERIANTH COLORED CUPS 3b

ANGELINE  
ARTIST'S MODEL  
AUTOWIN  
BALLYCASTLE  
BANTRY  
BLARNEY  
BLINKBONNY  
BRAMBLING  
BRAVURA  
CLOCKFACE  
CARO NOME  
COLORATURA  
CRETE  
CROWN DERBY  
DREAMLIGHT  
FAIRY CIRCLE  
FAIRY TALE  
FIREWATER  
GALILEE  
LADY KESTEVEN  
LIMERICK  
LOUGH AREMA  
MAHMOUD  
MARCO  
MATAPAN  
MR. JINKS  
MISTY MOON  
MYSTIC  
ORAN  
ORTONA  
OTRANTO  
PAPRIKA  
PERA  
PICADOR  
SCANDAL  
SILVER PLANE  
SYLVIA O'NEILL  
TEBOURBA  
TINSEL  
TOBRUK

## SMALL CUPS ALL WHITE 3c

ALBERNI BEAUTY  
ALTYRE  
BRYHER  
CHINESE WHITE  
CUSHENDALL  
FOGGY DEW

## SMALL CUPS 3c—Cont.

FRIGID  
MOONDANCE  
POLAR SEA  
SAMARIA  
SILVERMINE  
SILVER SALVER

## DOUBLES 4

CHEERFULNESS  
GOLDEN DUCAT  
IRENE COPELAND  
MARY COPELAND  
PENCREBAR  
RIOUS  
SUNBURST  
SWANSDOWN  
YELLOW CHEERFULNESS

## TRIANDRUS 5a

APRIL TEARS  
CATHEDRAL  
FORTY NINER  
KINGS SUTTON  
LEMON DROPS  
NIVETH  
THALIA  
YELLOW WARBLER

## TRIANDRUS 5b

DAWN  
HAWERA  
OCONEE  
ROSE DOWN  
SILVER CHIMES

## CYCLAMINEUS 6a

CHARITY MAY  
DOVE WINGS  
ESTRELLITA  
FEBRUARY GOLD  
MARCH SUNSHINE  
MITE  
THE KNAVE  
TREWIRGIE

## CYCLAMINEUS 6b

BERYL

## JONQUILLA 7a

GOLDEN GOBLET

## JONQUILS 7b

BEEBOP  
BOBBY SOXER  
CHERIE  
CHEYENNE  
GOLDEN PERFECTION  
KIOWA  
LA BELLE  
LANARTH  
LINTIE  
ORANGE QUEEN  
SUN DISC  
TREVITHIAN  
TRIM  
WHITE WEDGEWOOD

## TAZETTA 8

CRAFORD  
HIAWASSEE  
ST. AGNES

## POETICUS 9

ACTAEA  
CANTABILE  
DACTYL  
KNAVE OF DIAMONDS  
LIGHTS OUT  
PENTUCKET  
SHANACH

## WILD FORMS AND HYBRIDS (10)

CYCLATAZ

# DAFFODILS IN 1955-1956

In retrospect, it seems a long time since the last Daffodil flowering season has passed, but even so, as of this date, January 17th, 1957, we have already had flowers for two months; the bulbocodiums, to be sure but nevertheless, Daffodils. **Narcissus bulbocodium x Nylon** opened its first bloom early in November in a row planted near a wooded area. To be more correct, this row of bulbs consisted of seedlings of **Nylon**, I believe. It was followed shortly after by **N. bulbocodium foliosus**, one of its ancestors, a lovely pure white little flower, and **N. b. romieuxii**, a somewhat larger relative with more flaring trumpets with a lovely soft sulphur lemon coloring. Both of these are in a plastic greenhouse to protect them from wind and rain. The delightful little trumpet, **N. minimus (asturiensis)** is just opening its first blooms.

But we must go back to last season. It was certainly a season of frustration and fruition, of disappointment and gratification! Periodically, we warm water sterilize our bulbs, and as we grow a great many varieties, it is incumbent that most of the treating be done after orders are filled, and just as we plant the bulbs. Late treatment is often a bit injurious to the newly forming roots but if some are damaged, new ones ordinarily take their place. Since weeding the rows is quite a problem, we did not cover the bulbs very deeply at planting time, intending to ridge them after the first weed seeds germinated. Almost constant rain after the conclusion of the planting delayed this operation, and then, early in November we were subjected to the worst cold wave on record for that time of the year. The bulbs being somewhat injured already and thoroughly saturated with water along with being lightly covered, they were in poor condition to meet the onslaught of the severe freeze. As a result, very heavy casualties resulted, some bulbs being killed outright and others making an inadequate root system, so that in many instances, the bulbs harvested in 1956 were smaller than what had been planted the previous fall. The damage varied greatly with varieties, and some bulbs within a variety were much more injured than others. Most survived, but virtually all were much smaller than usual. The crop was extremely short and we had no end of trouble filling orders. Of many we had to give two smaller bulbs for one large. Of some we managed to procure bulbs from other growers locally who plant earlier than we do. We anticipate a fair recovery in most varieties this year. A few will take two years or more to come back, and consequently some varieties will have to be dropped from our list for a time.

Most of our seedlings were not treated or were planted earlier and did not fare so badly, and we had sample bulbs of many named varieties planted in clumps around our yard, and these did not undergo the ordeal suffered by our main planting. From these we had many nice blooms. Among the newly blooming seedlings we had, perhaps, more good flowers than in any previous year. These furnished a measure of compensation for the losses but could not offset our disappointment at being unable to send out the type of bulbs we like to send on orders.

The one real highlight of the season was the trip to the first convention of the American Daffodil Society at Washington, D. C., where we were privileged to meet many of our customers, including a number of you who may read this, to renew old acquaintances, and to meet the dean of Daffodil hybridizers, Mr. Guy Wilson, with whom we had corresponded for many years, and Mr. Reginald Wooten, who has long been known in connection with the Midland Daffodil Society in England. It was our first trip to Washington, to say nothing of our first trip by plane, and the view afforded that glorious Easter morning as the plane came in over the city will never be forgotten. As we gazed at the panorama of architectural mas-

terpieces and sought to identify as many as possible, a feeling of awe and pride mingled in our thoughts while we considered the rich heritage left us by our God-fearing and courageous forebears, who at the price of great sacrifice made possible this magnificent and beautiful city and the nation it represents. Returning to terra firma, we we soon made our way to the home of my cousins, the N. E. Drews, where we stayed for the week. That afternoon we enjoyed an Easter Organ concert at the National Cathedral, a most impressive experience. In the days which followed, it was our privilege to visit Mount Vernon and "Longwood" as the guests of Mrs. John Levison, as well as many places of historical interest. Judge Carey Quinn invited us to a pre-convention get-together where we met many Daffodil notables, and the Reinelts asked us to dinner with a group, most of whose names have already been mentioned. It was impossible to accept all the invitations in the brief time allotted us!

The Convention itself proved very interesting, with the high point being reached in Mr. Wilson's address. He told something of his fifty years as a Daffodil raiser, but characteristically devoted more time to the successes of other breeders than to his own achievements. Certainly, none of his audience will forget the occasion! The lectures given by Dr. John C. Wister, Dr. R. C. Allen, Mr. Frank Reinelt, Mr. C. R. Wooten and Mr. Adrain Frylink were of much interest as were the reports of Mrs. William A. Bridges and Mrs. J. Robert Walker. The garden tours were a little early, as most of the Daffodils were not yet in bloom; however, Mr. Charles W. Culpepper and Mr. Willis H. Wheeler, both of whom are hybridizers, had a good many Daffodils to show.

While virtually nothing was open when we left home for the convention, on our arrival home April 9th, there was color everywhere, particularly in the seedling beds. The succeeding weeks were virtually devoid of either rain or frost or wind, a situation unusual to Daffodil time. Between trying to catch up on work accumulated while we were absent, checking seedlings that had opened, and entertaining visitors, we were kept very busy, and there was little opportunity for hybridizing or other field work. The dry sunny weather made possible the spending of more time in the field than normal, but it had one detrimental effect—red and pink cupped varieties on the whole had much less than normal color intensity. **PARICUTIN** was hardly as brilliant as normally, but it was still the brightest flower in the garden, and was larger and of finer form than I had previously grown it. Quite often, as size increases, roughness comes too, but we are hoping that this is a case of a variety improving in quality after introduction, a situation that sometimes occurs, but not very frequently. Another seedling which we have grown for several years under the name **MAUNA LOA** was among the most striking of our planting. It too, has a brilliant crown and an extremely broad overlapping perianth of tremendous substance, but rather rough. We may eventually offer it as a garden flower.

The two Daffodils just described were grown in a bed near our office and perhaps it would be just as well to include others from the same location in this part of our notes. It was here that **LUNAR SEA** was planted, and we think we have as fine a reverse bi-color as has been introduced. The perianth is paler in color than that of **SPELLBINDER** and it is much more flat, while the trumpet is more slender and less frilled and it becomes whiter as it develops. The white trumpet, **MOUNT JEFFERSON** is a very large flower with broad overlapping perianth, and has an immense ruffled and frilled bell-shaped trumpet. The giant pure white flowers were well poised on tall strong stems. It made as large and fine bulbs last

year as we have seen from any white. Nearby was **COLORATURA**, as nearly a perfect flower in form and substance as we have offered. It inherits much of the grace of its parent, **CHINESE WHITE**, and its cup has a luscious frill of rich apricot. **MADRIGAL** has a larger, more heavily frilled, flatter crown, and is very striking but is not as well balanced in form. We have in the past made frequent mention of a **GREEN ISLAND X GLENSHANE** seedling which might be described as a taller **GLENSHANE** with a cup of appleblossom to apricot pink. The coloring is paler and less pink some years than others, but it is always an attractive flower. We have given it the name **CARO NOME**. Probably our finest pink trumpet is **RIMA** from **KENMARE X DAWNGLOW**. It has a velvety smooth white perianth with a lilac toned pink trumpet. Some years ago, out of rather a large lot of seedlings from **TUNIS X SHADEEN**, there appeared one with quite exceptional intensity of coloring. It was not large nor did it seem to have much in the way of form or substance; however, it was selected and lined out with others that were to be watched further. For three or four years it made little increase, but it improved in size and quality. Then it began to increase normally. It seems now to have above average keeping qualities and holds its color better than most, although it does not open pink. The flower somewhat resembles **SALMON TROUT** and it is to be offered under the name **INTERLUDE**. From **GLENSHANE X MABEL TAYLOR** there came numbers of pink toned flowers of which one of the most striking, AP3/1, resembles its seed parent in form but has a larger, very heavily ruffled crown of rich salmon pink throughout. One of the most beautiful in both color and form is Q36/4, from **GREEN ISLAND X ((WHITE SENTINEL X MRS. BACKHOUSE) X WILD ROSE)**, a medium sized bloom with nicely overlapping, smooth, flat, white perianth, and quite clear pink, bowl shaped crown with a narrow margin well shirred and frilled.

Among the oddities of the season was one of the numerous progeny from **INTERIM** and **MABEL TAYLOR** that had a perianth of indifferent quality, but with a wide flaring crown in which the stamens were transformed into petaloids, the entire double crown being of a unique old rose color. It was not alone in this matter of doubling, but it was the first year in which this trait had shown up among our pink seedlings. It will be interesting to ascertain if this trait is stable. From the same parentage have come hundreds of seedlings with cups having varying degrees of rosy pink, salmon pink, and orange toned pink, with an occasional one in salmon rose or tomato red. The latter should prove a new avenue of approach in breeding red and white Daffodils. Two of our former introductions, **PINK LACE** and **RADIATION** are proving good varieties for breeding, both having given a number of nice flowers. We still regard **RADIATION** as one of our best introductions but it does not increase very rapidly nor does it make very attractive bulbs. **PINK LACE** is a beautiful shell pink when at its best, but does not develop good coloring every year, and even in good years, the color is rather evanescent. It is quite an attractive flower even without color, and has the faculty of transmitting its nice frilling to many of its descendants which frequently have much more color than it does.

**ROSARIO** is still one of the finest pinks as to form, and it gives seedlings of high quality although most that we have raised were possessed of little depth in color. **MABEL TAYLOR** gives color and frills but seldom smooth perianths. Before leaving the pinks, we would again mention the little pink jonquils from **WILD ROSE X Jonquilla simplex**, two or three of which were quite unique, and appear to be very free bloomers and increase well.



GREEN ISLAND — Page 10

Next to the pinks we have given perhaps as much attention to the sulphur lemon toned flowers as any. From **KING OF THE NORTH X CONTENT** we raised many of this coloring, of which three have been introduced, **LUNA MOTH**, **LEMON MERINGUE**, and **LUNAR SEA**, the last being a reverse bi-color and having been described before. **LUNA MOTH** is one of the largest in this soft cool coloring and possesses an unusual luminescence. **LEMON MERINGUE** did not fare well in the "cooking" and freezing last year and will have to be withdrawn until it recovers. From **BINKIE** crossed with a sister seedling to the above mentioned varieties, we raised the most interesting lot of this color seen here. One is a very late flowering trumpet variety. The others are large cups, several of which resemble **BINKIE** in form, and are early midseason in bloom. At least half a dozen are of very high quality. One of the first to be selected was much larger than **BINKIE** and has a perianth of much deeper, more luminous coloring, and a crown which became almost pure white as it developed. Another was smaller but very profuse in flowering, and so precise and perfect in form that it would be difficult to visualize how it could be improved upon. Several others were nearly as good this past spring, and all seem to be excellent increasers. If they would only prove immune to color breaking which is common to Daffodils of these colors, they should prove very valuable acquisitions. Should it be a genetic factor that is responsible for this deterioration, we can only hope that the offending genes may not be present in these seedlings.

When we crossed **GREEN ISLAND** with **CHINESE WHITE** some years ago and obtained such excellent results, we decided after seeing their progeny to repeat the cross on a much larger scale. The second lot came into bloom in 1956 and there were so many beautiful and intriguing flowers that we were quite at a loss to know which to mark and line out for further observation. I think that at least 100 were saved, and not all have bloomed yet—many that did having been from very small bulbs! The old Dutch

variety, **PEKING**, with its large flat, intensely brilliant red crown has always been a rather weak grower and slow increaser. Pollen from it used on **FERMOY** and **GREEN ISLAND** gave numbers of seedlings which grew taller and stronger, with considerable variation in form, but with that fiery orange red crown, and we are hoping that among them there may be one or two with consistently good growing habits.

Good bi-color trumpets are quite rare, **PREAMBLE** being perhaps the finest we have seen. Some years ago we flowered one from (**BEERSHEBA X KANDAHAR**) X **KANCHENJUNGA** which was a flower of excellent quality, but most years a percentage of its blooms had one distorted petal. It seems to be improving, and this last year we had many fine blooms of it, even from bulbs left in the ground two years, a practice that often causes flowers with a tendency to roughness to come worse. We have given the name **FROLIC** to this seedling and used some bulbs of it as extras on orders last fall. Unfortunately, we gave the wrong parentage for this in our R.H.S. Yearbook article. **FROLIC** pollen used on **POLINDRA** gave us some of the finest bi-color large cups we have seen, but with **TUDOR MINSTREL** and **FESTIVITY** available, new 2b's need to be extra fine or different.

**FULGENT**, a tall stemmed white with red eye from **LADY KESTIVEN X HADES** has been a nice flower for cutting. It, too, was sent out with some orders last fall. **D. SCHAFFER X CHINESE WHITE** produced a flower somewhat like **CHINESE WHITE** in form but with a deeper cup, and much larger and taller. Though not possessed with the innate grace and ethereal loveliness of its parent, its more rugged personality should gain it friends. It bears the tentative name **WHITE SENTINEL**. Considerable time has been devoted to breeding dwarf Daffodils the last few years but there is little new to report this year. Next spring we should see the outcome of a number of crosses involving various of the species and other dwarf sorts. Meanwhile, we might make mention of the very interesting **N. cyclamineus** hybrids shown by Mrs. George

D. Watrous, Jr., at the Convention and several **N. cyclamineus** and **N. triandrus** hybrids grown by our neighbor, Mr. M. Fowlds. In addition he has a splendid little jonquil selected out of his **N. juncifolius** stock which is evidently a hybrid between this and **N. jonquilla simplex**. With us it bloomed about two weeks earlier than **KIDLING** last spring but was very much like it otherwise.

Thus far, most of this chatter has had to do with our seedlings, both because of that phase of growing Daffodils being of greatest interest to us, and on account of the damage suffered by most of the field planted stock. Nevertheless, we had many fine blooms of named varieties. A clump of **GALWAY** planted south of our house has furnished a brilliant splash of gold early in the season, and we still regard it as the finest yellow Daffodil. The giant trumpet, **PAUL BUNYAN**, planted nearby has come in for a share of acclaim. For quality, **MILANION** and **KINGSCOURT** are near the top of the group we grow, whereas **LATE SUN** is one of the favorites because of its late season of bloom, coming when most yellows are gone. Good whites are legion if we may consider all classes, and our favorites include **LUDLOW**, **TRUTH**, **ZERO**, **CANTATRICE**, **COOLIN**, **FAIRY DREAM**, **CHINESE WHITE**, **FOGGY DEW**, **POLAR SEA** and several more that we cannot take space to name here. **KANCHENJUNGA** and **BROUGHSHANE** are most striking and are favorites with visitors. Even more gigantic is **WHITE MONARCH**. I suppose that if we were to name the one variety that more visitors want than anything else we grow it would be **BONNEVILLE**, and it is in great demand by exhibitors although it is not of true show form. We have never seen any other white to equal **EMPRESS OF IRELAND**, but unfortunately it will be years before it is generally available. Aside from those mentioned before, **EFFECTIVE**, **RATHKENNY**, **SPITZBERGEN** and **FORESIGHT** are among the better bi-color trumpets. Even though we have varieties like **TUDOR MINSTREL** and **FESTIVITY**, we are not yet ready to part with other 2b's such as **BODILLY**, **POLINDRA**, **CARDIGAN**, and **GREETING**. And, of course, there are the **JOHN EVELYN** hybrids that are particularly good garden flowers, and these include **DUKE OF WINDSOR**, **SELMA LAGERLOF**, **PHILTANTON**, **BROOKVILLE**, **LINN**, **CHINOOK**, **FLYING SAUCER**, **LEBANON**, and others.

One of the largest classes of all, the red cups with yellow perianth has been given little consideration up to now. One of the first to bloom each year, and hence, one that receives especial notice is **SACAJAWEA**. Also early, and of better form are **ARMADA** and **CEYLON**. Among the most striking in color are **NARVIK**, **ARDOUR**, **CALIFORNIA GOLD**, **ROYAL MAIL**, and **SUDAN**. None of these match **PARICUTIN** for ostentation if I may use that term in describing a flower. Such varieties as **RUSTOM PASHA**, **FIRE-PROOF**, and two already mentioned, **ARMADA** and **CEYLON** have the faculty of intensifying in color rather than fading as they age. Then there are the red and white flowers, a class that needs further development. Perhaps **ARBAR**, **SIGNAL LIGHT**, **ROIMOND**, **LIMERICK**, **MATAPAN** and **MAHMOUD** are among the top varieties in this class. **KILWORTH**, **FERMOY**, and **BRAVURA** are others of good quality, and while orange with little red in its composition, **ARTIST'S MODEL** is the most unique in this class.

Good reports have come to us on **BITHYNIA** and we have found it a good performer here, and it is in addition, an excellent parent plant. Small clumps of **YELLOW WARBLER** and **MITE** planted by the office have been most attractive the past two years.

It is to be hoped that a recurrence of last year's freeze will not be on the calendar of the future. Nurseries and farmers lost heavily, but the increased demand for plants to replace those lost around homes will doubtless more than repay most growers of shrubs and trees. We now look forward in anticipation of new beauty to be revealed in 1957! And while we are waiting, my wife and I will relive our trip of last spring!

*Our Special*

## **30th ANNIVERSARY**

**COLLECTION**

CASABIANCA  
CHINOOK  
CLACKAMAS  
GOLD CROWN  
LATE SUN  
LINN

MIRTH  
MEADOWLARK  
PINWHEEL  
SANTIAM  
WILLAMETTE  
ZEST

**One of each of the above**

valued at \$9.40

for **\$5.75**

