

DE JAGER

BULBS

1960

Daffodils and Narcissi

The beauty of Daffodils and Narcissi is unquestioned and these flowers now form a leading feature in almost every spring garden. Every gardener should realize the enormous amount of intense pleasure that can so easily be obtained from the cultivation of a batch of Daffodils or Narcissi.

Naturalizing Daffodils and Narcissi in Grass etc. All Daffodils and Narcissi are suitable for naturalizing but in very heavy soils, preference should be given to stronger growing sorts e.i. Trumpet varieties and many Large Cupped sorts. They are all admirably adaptable for grassy slopes and banks, where they should be freely planted. A splendid effect is obtained when Trumpet and other varieties are grouped separately, scattered on the ground and planted where they fall.

Soil and its Treatment. Daffodils and Narcissi will thrive in any well cultivated and drained garden soil. In preparing the ground for planting, dig deeply and if well rotted stable or cow manure is available this may advantageously be dug in 18 to 20 inches deep so as not to come into immediate contact with the bulbs. Never use fresh manure of any kind at planting time. On poor and dry sandy soils we recommend a dressing of sulphate of potash at a rate of about 1 oz. per square yard to be sprinkled over the surface of the ground after planting.

Growing Daffodils in the greenhouse or indoors. All types of Daffodils and Narcissi are suitable for this purpose. Pot up the bulbs on arrival and if ordinary pots are used take a good loamy soil, adding sufficient sand and peat to keep the mixture open. A light dusting of bone meal is also useful. Pot firmly in well crocked pots. For bowls without drainage holes use a good fibre. Plunge the pots and/or bowls in the coolest place of your garden and in the absence of garden space the pots may be placed in a cool cellar (35–40° F) where watering from time to time is necessary. When the shoots are about 4 inches long and the flower buds well out of the neck of the bulbs, the pots may be removed into a warm room. Heat should be gradually increased from 50° to max. 60° F.

It is advisable to remove the foliage of the sideshoots, if these do not show a flower bud. Just before the buds are open, water should be spread lightly over the buds, when they are in bloom less water should be applied.

Revised System for the Classification of Daffodils, in use since January 1, 1950.

The whole Genus is now classified in eleven Divisions as follows:

Ia. Yellow Trumpets – Ib. Bicolor Trumpets – Ic. White Trumpets – IIa. Large-Cupped, yellow perianth, coloured cup or corona – IIb. Large-Cupped, white perianth, coloured cup or corona – IIc. Large-Cupped, white perianth, white cup or corona – IId. Large-Cupped, not falling in a, b, or c – IIIa. Small-Cupped, yellow perianth, coloured cup or corona – IIIb. Small-Cupped, white perianth, coloured cup or corona – IIIc. Small-Cupped, white perianth, white cup or corona – IIId. Small-Cupped, not falling in a, b, or c – IV. Double varieties – V. Triandrus Narcissi – VI. Cyclamineus Narcissi – VII. Jonquilla Narcissi – VIII. Tazetta Hybrids (Poetaz etc.) – IX. Poeticus Narcissi – X. Species and Wild forms and Hybrids – XI. Miscellaneous Narcissi not falling into any of the foregoing Divisions.

GIFT TOKENS

Bulbs make a very suitable present where other articles fail. We supply Gift Tokens to any value desired and they are in the form of an attractive card to enable recipients to select Bulbs from our Catalogue to the specified value.

On receipt of remittance at our Hamilton Office the Token can be sent direct to the recipient together with a copy of our current Catalogue.

New and Choice Daffodils

We offer the following list of very choice Daffodils and Narcissi, which should be of special interest to the Connoisseurs. The bulbs offered are top sized and orders for these particular varieties should reach us please as early as possible. The earlier the bulbs are planted the better the results.

- Air Marshal** (Large-Cupped 2a), A.M. R.H.S. 1957, a large flower with very broad widespread perianth of intense glistening golden yellow, rather straight cup of bright orange-red, slightly paler at the base and nicely frilled at mouth. A striking variety of wonderful form, a tall upstanding plant. \$ 4.50 each
- Alamein** (Large-Cupped 2a), A.M. (e) 1945, a lovely flower of highest quality with beautiful smooth broad, flat clear golden yellow perianth segments, very slightly pointed at the tips and a rather straight well frilled medium-sized cup of intense deep solid orange-red. 50 cts each; \$ 5.00 per doz.
- Amberley** (Large-Cupped 2a), A.M. (e) R.H.S. 1949, a large, uniformly golden-yellow flower with broad beautifully smooth, overlapping perianth and a nicely proportioned bowl-shaped cup, fine exhibition flower. 50 cts each; \$ 5.00 per doz.
- Apricot Distinction** (Small-Cupped 3a), A.M. Haarlem, a very rare and distinct novelty with pure apricot coloured perianth and brilliant orange cup, provoked a great deal of attention at our stand at the 1960 R.H.S. Daffodil Show. 80 cts each; \$ 8.00 per doz.
- Arbar** (Large-Cupped 2b), A.M. (e) R.H.S. 1949, a most wonderful large flower of perfect form and substance; the pure white perianth is very broad and flat with a large saucer-shaped cup of deep reddish-orange, which stands sun reasonably well. \$ 6.00 each
- Ardclinis** (White Trumpet 1c), one of the very finest White Trumpets up to date, a large flower of most perfect form, balance, quality and fine carriage, broad smooth flat perianth and perfectly proportioned neatly flanged trumpet, very durable substance. 40 cts. each; \$ 4.00 per doz.
- Armada** (Large-Cupped 2a), F.C.C. R.H.S. 1947, an outstanding and magnificent novelty raised by Mr. Guy L. Wilson and caused a real sensation, a well posed 4½ inches in diameter flower with smooth, broad much overlapping intense deep yellow perianth and deep tangerine red-orange cup-shaped crown, 1 in. long and about 1½ in. in diameter at its frilled and expanded mouth, truly a most striking and early flower, vigorous grower. \$ 1.50 each
- Arctic Gold** (Yellow Trumpet 1a), A.M. R.H.S. 1959, the broad overlapping deep golden yellow perianth is of smooth waxy texture, and the well proportioned trumpet is widely flanged and serrated at the mouth. The whole flower is of a deeper gold than Goldcourt. \$ 4.50 each
- Ave** (Large-Cupped 2c), a most perfect large absolutely pure white flower of flawless smoothness and symmetry, having broad pointed flat perianth standing at right angles to the large well balanced crown, a large crowned Leedsii under the old classification. \$ 1.25 each
- Ballycastle** (Small-Cupped 3b), one of the most charming and attractive flowers which attracted considerable attention as a show-flower; broad pure white perianth, shallow white crown daintily illuminated by a sparkling golden rim. \$ 1.50 each
- Bann** (Large-Cupped 2b), a beautiful large flower of perfect balance and quality; broad pure white perianth, well proportioned, nicely flanged crown of pleasing clear biscuit buff. 80 cts each; \$ 8.00 per doz.
- Bastion** (Yellow Trumpet 1a), A.M. R.H.S. and Midland Daffodil Society, a late flowering deep self-golden trumpet of fine quality and substance, having very broad flat smooth perianth standing at right angles to the rather long straight-sided trumpet, splendid for exhibition. 50 cts each; \$ 5.00 per doz.
- Belisana** (Large-Cupped 2b), F.C.C. Haarlem 1952, in our opinion the largest of the 2b section in cultivation producing flowers of enormous size, pure white well proportioned perianth with gigantic expanding flat yellow crown with appealing frilled orange edge, perfect form. \$ 1.00 each
- Binkie** (Reversed Bicolor 2d), A.M. (g) Haarlem 1950, a curious and most distinct attractive variety, flowers are of excellent form, balance and fine substance, having broad flat-pointed perianth and a well-proportioned crown, on first opening the whole flower is a most pleasant clear sulphur-lemon, but the crown gradually passes to almost pure white. 60 cts each; \$ 6.00 per doz.
- Bizerta** (Large-Cupped 2b), A.M. R.H.S. 1947, and Haarlem 1949, a show flower similar to Polindra but of unusual and distinct colouring, pure white thick perianth, cup rich apricot chrome with slightly paler frill at mouth, flower has great lasting qualities. 50 cts each; \$ 5.00 per doz.

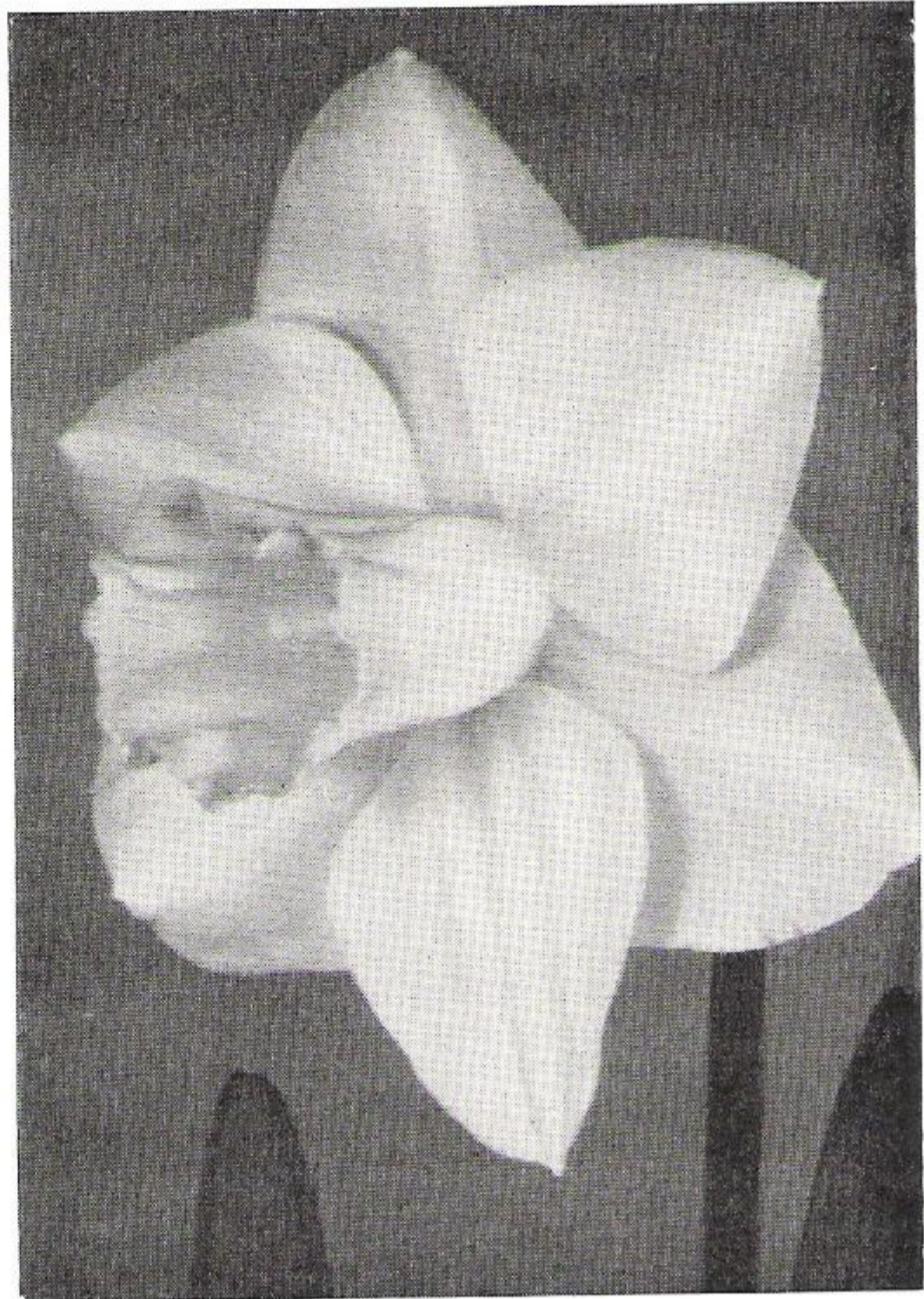
- Blarney** (Small-Cupped 3b), F.C.C. R.H.S. 1946, large flower, having firm satin smooth, snow-white perianth and flat apricot-orange crown with a narrow primrose rim, a most charming flower of fine quality and balance and a favourite for the show-table. **50 cts** each; \$ **5.00** per doz.
- Border Chief** (Large-Cupped 2a) A.M. R.H.S. 1959, a large flower with bright golden yellow perianth, of grand quality and a large expanding bowl shaped crown of intense deep orange-red, one of the most outstanding novelties in the red and yellow section. **\$ 10.00** each
- Broughshane** (White Trumpet 1c), A.M. R.H.S. and Haarlem 1948, a glorious giant white Trumpet of perfect form and balance, the noble trumpet being widely flanged, reflexed and frilled, does not overbalance the immense perianth which is fully 5½ inches in diameter, the outer segments being up to 2½ inches wide, the great flower which is of immense substance and quite exceptionally durable, is carried on a strong stem and has very broad foliage. **60 cts** each; \$ **6.00** per doz.
- Buncrana** (Large-Cupped 2b), A.M. R.H.S., a most distinct and beautiful first-class show-flower having very broad flat pure white shovel-shaped segments and a beautifully proportioned longish frilled cup of unusual deep peachy-orange shade. **40 cts** each; \$ **4.00** per doz.
- Cantabile** (Poeticus 9), frosty white perianth of perfect form, large deep green eye with a deep red rim, a most charming and graceful poeticus but has to be cut in bud to preserve the colour. **35 cts** each; \$ **3.50** per doz.
- Cantatrice** (White Trumpet 1c), F.C.C. R.H.S., this variety has recorded a remarkable triumph at the various Flower Shows all over the world and leads the field for grace and beauty of form. A flower of a most exquisite and smooth texture, clean cut pointed even perianth standing out sharply from the well-balanced perfectly smooth rather slender trumpet, absolutely pure clear-white throughout, a perfect beauty, since 6 years voted the second best variety for exhibition. **80 cts** each; \$ **8.00** per doz.
- Carnlough** (Large-Cupped 2c), a distinct flower of strong sturdy habit and superb quality, broad firm flat pure white perianth; on first opening the crown is citron with a frill of soft coral-pink while entire flower passes to purest white throughout, exceptionally durable (see illustration page 43). **30 cts** each; \$ **3.00** per doz.
- Ceylon** (Large-Cupped 2a), F.C.C. R.H.S. 1948, one of the most magnificent red and yellow flowers seen up to date, a flower of beautiful form and proportion, with broad smooth shovel-pointed overlapping perianth of deep intense aureolin gold that has an almost metallic sheen and a gofferred goblet-shaped crown of dark, clear intense cadmium orange-red, quite sunproof, tall robust plant. **\$ 1.00** each
- Charity May** (Cyclamineus 6a), F.C.C. (g), A.M. (e) R.H.S., clear self coloured yellow cyclamineus hybrid of a very charming character with broad reflexed petals and elegantly formed cup, slightly expanded and frilled at mouth. **75 cts** each; \$ **7.50** per doz.
- Chérie** (Jonquilla 7b), a most unusual and charming hybrid, having an ivory-white perianth with a small cup distinctly flushed pale shell-pink. One to three smallish flowers on each stem, very exquisite. **35 cts** each; \$ **3.50** per doz.
- Chinese White** (Small-Cupped 3c), F.C.C. R.H.S. and Haarlem 1950, very large flower of quite faultless form and quality, pure-white throughout except for a point touch of green in the eye, perfectly proportioned shallow-fluted saucer crown, a superb show-flower, quite unique. **\$ 1.00** each
- Chungking** (Small-Cupped 3a), F.C.C. Haarlem 1950, a gorgeous and magnificent Small-Cupped variety, a large tall-stemmed very circular flower, having broad, smooth, clear yellow perianth and an intense deep vivid red shallow crown. **50 cts** each; \$ **5.00** per doz.
- Content** (Bicolor Trumpet 1b), A.M. R.H.S., a very large and quite unique trumpet after the style of Beersheba but larger and much taller, the noble perianth is built of broad long flat petals of a fine smooth quality and substance. When first opening it is a uniform tone of lovely soft greenish primrose throughout, gradually passing to a very pale lemon-white all over, except the brim of the long graceful trumpet which retains a dainty frill of lemon, very vigorous grower. **75 cts** each; \$ **7.50** per doz.
- Coverack Perfection** (Large-Cupped 2b), A.M. R.H.S., a unique flower of outstanding charm, broad overlapping rather pointed white perianth, large wide shallow saucer crown, edged and flushed pale gold and salmon, has a faint tinge of green behind the anthers, very tall and most charming show-flower. **40 cts** each; \$ **4.00** per doz.
- Craigyarren** (Large-Cupped 2a), a large flower of fine quality and solid texture, much overlapping deep yellow perianth and a beautifully proportioned crimson-red crown, first class. **\$ 1.00** each
- Cromarty** (Yellow Trumpet 1a), A.M. (e.g.) R.H.S., this trumpet of faultless form and beautiful quality has a broad smooth flat perianth standing at right angles to the neatly flanged and serrated trumpet, ideal garden plant of great lasting power, moreover a perfect exhibition flower of faultless form, finish and colour. **40 cts** each; \$ **4.00** per doz.
- Cushendall** (Small-Cupped 3c), A.M. R.H.S., in our opinion the best green-eyed flower under cultivation; it is of faultless form, quality and splendid substance, broad smooth circular overlapping perianth of purest sparkling Poeticus-white, very shallow saucer crown edged with a delicate cream-coloured frill, centre is a lovely moss-green, very late. **75 cts** each; \$ **7.50** per doz.

Dallas (Small-Cupped 3c), a novelty of splendid quality and fine substance broad overlapping pure white perianth with an almost flat white crown, greenish in centre, excellent show-flower. **\$ 2.25** each

Daviot (Large-Cupped 2b), A.M. R.H.S. 1953, a distinct flower of exceptional charm, grace and refinement, the clear pure white perianth, which has a hint of cool green shading where the petals join the crown, is of a most lovely quality. The rather goblet-shaped crown is clear bright orange coral, shading towards primrose at the rim. Vigorous grower. **\$ 1.50** each

Deodora (Large Cupped 2c), A.M. R.H.S. 1959, large pure white perianth segments, very broad and flat slightly pointed at the tips and of splendid thick substance and quality with a large saucer shaped crown of palest primrose soon passing to almost white with nicely frilled margin of greenish lemon. A superb show-flower. **\$ 13.00** each

Dominator (Yellow Trumpet 1a), A.M., Haarlem 1948, a real giant among the trumpets and a wonderful Daffodil in size and substance, balance and proportion, broad thick overlapping perianth of deep golden yellow with large serrated golden yellow trumpet, a magnificent flower for garden and exhibition **80 cts** each; **\$ 8.00** per doz.



Carnlough

Double Event (Double 4), A.M. R.H.S. 1952, a very round flower, the larger segments are pure white and interspersed among them in the centre are small segments of soft lemon yellow. A very distinct novelty; fine robust plant with strong tall stems. **\$ 4.00** each

Dreamlight (Small-Cupped 3b), A.M. Haarlem 1949, an exquisite flower with broad smooth circular perianth of sparkling snow-white, pale grey-green sharply edged deep cerise, a beautiful bright coloured show-flower. **35 cts** each; **\$ 3.50** per doz.

Effective (Bicolor Trumpet 1b), A.M. R.H.S. 1935, a brilliantly contrasting bicolor trumpet of good substance, having a pure white perianth and intense golden yellow trumpet, a slight halo of clear yellow shows in the perianth just where it joins the trumpet, fine sturdy plant. **80 cts** each; **\$ 8.00** per doz.

Empress of Ireland (White Trumpet 1c), A.M. R.H.S. 1956, undoubtedly the most impressive and magnificent large white trumpet introduced up to date, a truly majestic flower up to 5 inches in diameter and of faultless form and balance, smooth flat perianth with immense broad segments, well balanced trumpet ideally flanged and frilled at the mouth. A perfect show-flower. **\$ 42.00** each

Falaise (Double 4), a unique double, raised from Mary Copeland; the pollen parent must have been a Poeticus as the petals are of the purest white and the flower has the true Poeticus-scent. The centre is bright orange-red which makes a striking contrast against the rather long pure white inner petals. A lightly built flower well poised on a tall wiry stem, late. **\$ 1.00** each

Fire Guard (Large-Cupped 2a), magnificent large flower with very broad rounded overlapping smooth flat perianth of deep golden yellow with goblet-shaped cup of intense orange-red, a very attractive flower. **40 cts** each; **\$ 4.00** per doz.

Fleurimont (Large-Cupped 2a), F.C.C. Haarlem 1950, a distinct and richly coloured flower having broad smooth clear yellow perianth of great substance and a beautifully frilled crown with vivid orange-red band. A wonderful flower with rich colour effect. **80 cts** each; **\$ 8.00** per doz.

Frigid (Small-Cupped 3c), F.C.C. R.H.S. 1950, one of the very latest to bloom in May, broad smooth pointed perianth measuring about 4 inches with smallish fluted almost flat crown, the whole flower is purest icy-white throughout except for a most lovely vivid emerald-eye. **50 cts** each; **\$ 5.00** per doz.

- Galway** (Large-Cupped 2a), F.C.C. R.H.S. 1948, a magnificent tall strong-stemmed intense self golden flower, bordering on Trumpet proportions, broad smooth perianth, well flanged Trumpet crown; it is a glorious garden plant owing to its texture, excellent for exhibition. **80 cts each; \$ 8.00 per doz.**
- Garland** (Large-Cupped 2a), F.C.C. Haarlem, a splendid large shallow crowned flower, the clear yellow perianth is of smooth waxy texture, the three outer petals are actually broader than their length and overlap each other, large expanded shallow crown of dark rich orange shading to gold in the centre, a most striking exhibition variety. **35 cts each; \$ 3.50 per doz.**
- Glacier** (White Trumpet 1c), a very large imposing white trumpet fully 5 inches across. The perianth segments are perfectly flat, very broad and overlapping and of great substance standing at right angles to the large bell mouthed trumpet which is nicely flanged and much frilled at mouth, the whole flower is icy-white throughout, very robust plant. **\$ 11.00 each**
- Glengormley** (Large-Cupped 2b), a lovely flower of a most unusual colouring having broad smooth pure white perianth and nicely proportioned crown of deep salmon-orange with narrow lemon yellow rim. Strong vigorous plant. **\$ 1.00 each**
- Glenshesk** (White Trumpet 1c), A.M. R.H.S. 1950, a noble White Trumpet of great size, almost 5 inches in diameter and beautiful thick smooth waxy substance, well posed on a stout 18 inch. stem; the trumpet is faint primrose on first opening and soon passes to pure white. **\$ 6.50 each**
- Goldcourt** (Yellow Trumpet 1a), F.C.C. R.H.S. 1947, a perfectly formed trumpet of good substance and beauty; smooth flat overlapping pointed segments and well balanced not overwide trumpet of pure maximus gold throughout. **60 cts each; \$ 6.00 per doz.**
- Golden Ducat** (Double 4), F.C.C. R.H.S. and Haarlem, this sport of the well-known daffodil King Alfred is a fine full double variety, of which the larger segments are canary-yellow and the smaller segments interspersed between the larger, are aureolin yellow, outstanding for exhibition (see illustration page 45). **\$ 1.00 each**
- Golden Goddess** (Yellow Trumpet 1a), F.C.C. Haarlem 1951, beautiful uniform deep golden yellow, a perfectly balanced new introduction of beautiful finish and quality well posed on a strong stem, excellent show-flower, very long lasting. **40 cts each; \$ 4.00 per doz.**
- Golden Rapture** (Yellow Trumpet 1a), F.C.C. R.H.S. 1959, a clear uniform golden yellow trumpet throughout, the magnificent formed large flower is almost 5 inches across, the broad perianth segments are beautifully smooth, much overlapping of lovely thick texture, the long trumpet is widely flanged and frilled at mouth. Tall robust plant and excellent show-flower. **\$ 23.00 each**
- Golden Torch** (Large-Cupped 2a), F.C.C. R.H.S. 1949, stands out as one of the finest rich golden-yellow garden plants of a bold and pleasing habit, the perfectly formed and well proportionated flowers are nicely posed on tall strong stems, also an excellent show-flower. **50 cts each; \$ 5.00 per doz.**
- Grape Fruit** (Yellow Trumpet 1a), F.C.C. Haarlem, a handsome flower of great beauty and distinct colouring, large well shaped trumpet with broad thick much overlapping perianth, a pale lemon throughout deepening to a very soft greenish lemon as it ages. **\$ 1.25 each**
- Green Island** (Large-Cupped 2b), A.M. R.H.S., a sensational flower of very large size and great substance, smooth rounded white segments of such immense width that they form an almost complete circle, well proportioned shallow bowl-shaped frilled cup, greenish white at the inside base, passing to white, which in turn passes to a band of clear cool greenish lemon at margin. **\$ 2.25 each**
- Greeting** (Large-Cupped 2b), A.M. R.H.S., a very beautiful flower of most distinct character, quite exceptional quality of waxy substance, large widespread somewhat starry but smooth and even pure white perianth, rather small goblet shaped clear lemon-yellow crown. **75 cts each; \$ 7.50 per doz.**
- Guardian** (Large-Cupped 2b), A.M. (g) Wisley Trials 1952, a magnificent shortnecked flower with very broad, smooth, flat pure white perianth, standing well back from the crown, which is almost of Trumpet dimensions neatly flanged at mouth and is pale primrose passing almost to white, strong grower. **50 cts each; \$ 5.00 per doz.**
- High Life** (Large-Cupped 2b), a large striking flower with creamy-white perianth and a large expanding shallow peachy-apricot cup, nicely frilled at edge, a most fascinating flower. **\$ 1.25 each**
- Hindustan** (White Trumpet 1c), a large imposing flower of the purest white throughout, the perianth segments of thick leathery substance are immensely broad, the outer three overlapping each other. The large trumpet is widely flanged and serrated at the mouth. **\$ 5.00 each**
- Hunter's Moon** (Yellow Trumpet 1a), A.M. (e.g.) R.H.S., a lovely flower of unique colouring, being clear shining, cool greenish lemon-yellow, most intense at the outer edge of the beautifully flanged and serrated trumpet, a very decorative flower. **\$ 1.00 each**
- Irish Luck** (Yellow Trumpet 1a), F.C.C. Haarlem 1950, this is considered one of the best yellow Trumpets ever raised, a very large flower of deep golden yellow throughout, faultless form with very broad much overlapping thick perianth spreading out at right angles to the perfectly proportioned neatly flanged and serrated trumpet. Tall robust plant and excellent show-flower. **\$ 1.50 each**

Jenny (Cyclamineus 6a), F.C.C. R.H.S. 1950, the gracefully reflexing perianth is pure white and the slender crown is pale primrose while if grown under glass, the whole flower passes to white which makes it extremely beautiful; stiff wiry stems, still scarce. **\$ 2.50 each**

Jezebel (Small-Cupped 3a), F.C.C. Haarlem 1957, an interesting flower of 'Barrii-type', with broad smooth perianth of wonderful deep reddish-gold that has an almost metallic sheen and shallow deep brick-red crown; elicits astonished comments from visitors; should be cut as it opens to preserve its remarkable colour. **\$ 2.50 each**

Kanchenjunga (White Trumpet 1c), A.M. R.H.S., an immense flower with the biggest and broadest perianth segments yet seen, forming an almost perfect circle and a magnificent widely flanged and serrated trumpet of palest lemon passing to white, perianth pure white, a noble flower of stately carriage. **75 cts each; \$ 7.50 per doz.**

Killaloe (Large-Cupped 2c), F.C.C. R.H.S. 1951, a most striking immense pure white flower of grand quality, very broad, flat, pointed perianth of fine substance, the large cup is widely expanded beautifully flanged and frilled at mouth, strong grower. **40 cts each; \$ 4.00 per doz.**

Killynure (Bicolor Trumpet 1b), large, broad pure white perianth and bright clear golden-yellow trumpet, a brilliant flower of sharp colour contrast. **75 cts each; \$ 7.50 per doz.**

Kilmorack (Large-Cupped 2a), A.M. R.H.S. 1956, tall stemmed neatly formed flower of moderate size and splendid colouring, broad shining aureoline-gold perianth of fine quality and substance, rich cadmium orange-scarlet cup. Very vigorous with beautiful blue green foliage. **\$ 1.75 each**

Kilworth, see page 60.

Kingscourt (Yellow Trumpet 1a), F.C.C. A.M. R.H.S. 1947. Has been voted at the R.H.S. Daffodil show, the best Daffodil variety and the best 1a, ten years in succession, the only Daffodil ever to achieve this record. A large flower of faultless form of superb quality and uniform intense deep golden colour, flat velvet smooth perianth of immense breadth and noble perfectly balanced bell mouthed trumpet, strong stem, fine sturdy plant. **\$ 1.00 each**

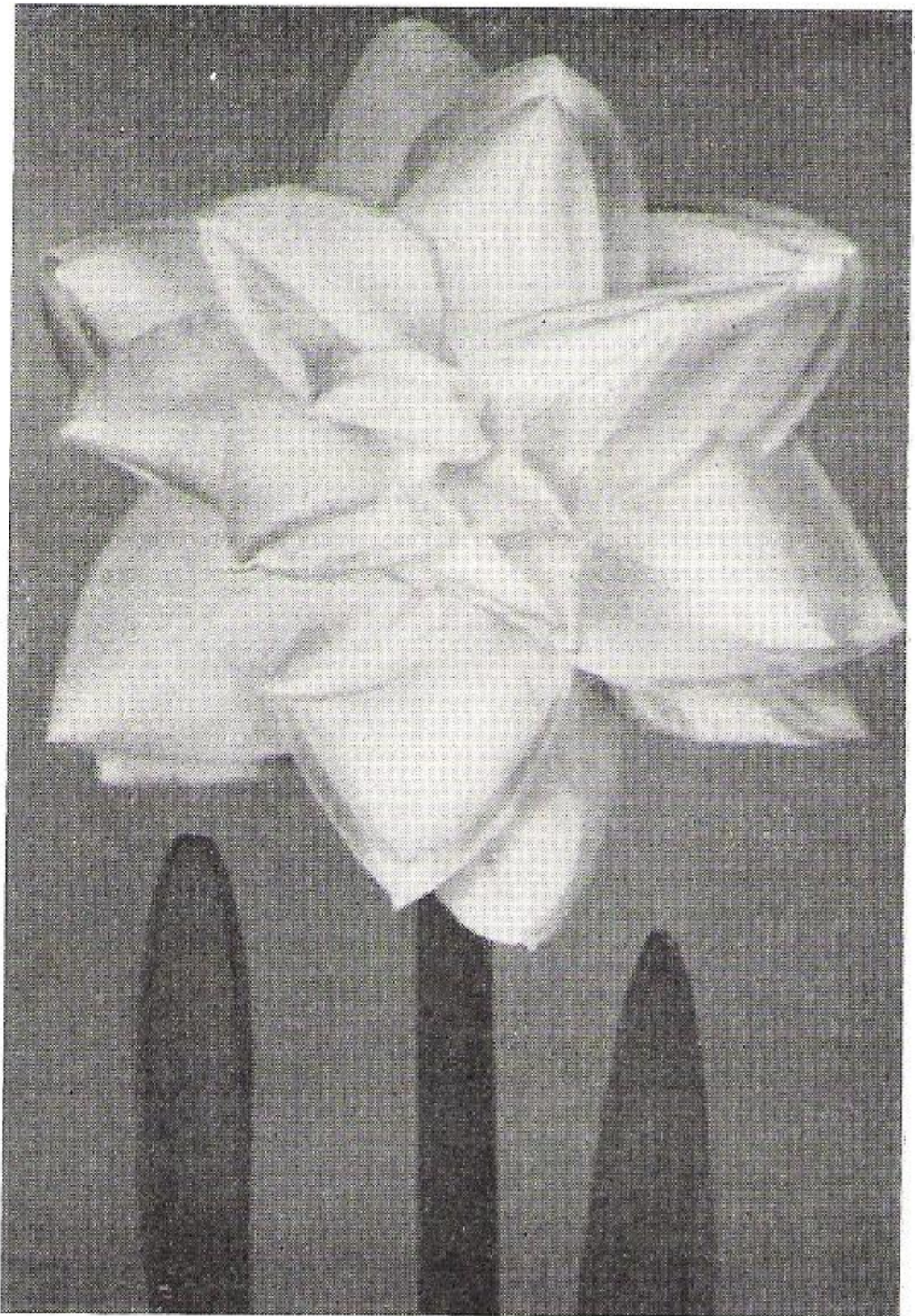
Krakatoa (Large-Cupped 2a), F.C.C. R.H.S. and Haarlem, a large flower of superb quality and solid texture, much overlapping rich golden yellow perianth with widely expanded cup of bright tangerine-red. A flower of brilliant colouring and striking contrast. **60 cts each; \$ 6.00 per doz.**

Lapford (Bicolor Trumpet 1b), A.M. R.H.S. 1954, broad rather rounded smooth white perianth with soft yellow trumpet, a beautiful early flowering Bicolor Trumpet of first class quality and texture, excellent show-flower with tall stem and short neck. **\$ 2.00 each**

Ludlow (Large-Cupped 2c), F.C.C. R.H.S., undoubtedly one of the finest varieties in this section yet raised, a perfect show-flower of moderate size and faultless form having broad flat perianth of solid texture, which stands at right angles to the well proportioned trumpet shaped crown, the flower is purest icy-white throughout, a very beautiful flower of perfect finish. **75 cts each; \$ 7.50 per doz.**

Manchu (Large-Cupped 2b), a well built flower of great substance with perfectly rounded creamy-white perianth, short trumpet-shaped crown deeply flanged at mouth, opening rich creamy-yellow and developing in a deeper shade when flower ages. **60 cts each; \$ 6.00 per doz.**

Masked Light (Large-Cupped 2a), a flower of wonderful colouring, broad beautiful smooth flat perianth of great substance of deep golden yellow with a flush of orange in the petals. The large cup is deep glowing orange-red nicely serrated and slightly flanged at mouth. **\$ 5.00 each**



Golden Ducat

- Matapan** (Small-Cupped 3b), a lovely quality flower of medium size with flat, very round, beautifully smooth, purest white perianth and a flat crown of intense crimson. Valuable as a show-flower on account of its earliness for a flower of this type. **\$ 1.00 each**
- Milanion** (Yellow Trumpet 1a), A.M. R.H.S. 1949, a large flower of very clear golden yellow, broad rather pointed smooth, perianth spreading out at right angles to the not too wide but most beautifully flanged trumpet; the flowers are short-necked and carried on tall stems. **60 cts each; \$ 6.00 per doz.**
- Missouri** (Large-Cupped 2a), A.M. Haarlem 1949, a first-class tall stemmed neatly formed flower of moderate size and splendid rich colouring, broad shining golden perianth of fine quality and substance and rich scarlet-orange cup which does not burn in the sun. Strong and healthy garden plant. **\$ 1.00 each**
- Misty Moon** (Small-Cupped 3b), larger than most of this section, an exquisite flower having pure white perianth and large eye with grey-white centre and the outer half a halo of soft pale salmon-orange. **35 cts each; \$ 3.50 per doz.**
- Moonstruck** (Yellow Trumpet 1a), F.C.C. A.M. R.H.S. 1951, the largest and most robust of the yellow Trumpet Section, an immense flower having broad pointed perianth of clear lemon primrose, standing at right angles to the noble flanged and serrated trumpet which is of a similar pale tone, but strikingly illuminated by the serrated brim being tipped with bright lemon, flowers are of fine quality and stately bearing. **\$ 2.25 each**
- My Love** (Large-Cupped 2b), F.C.C. R.H.S. 1959, the broad rounded pure white perianth is of beautifully smooth waxy texture and great substance, the large cup opens pale primrose, but when the flower ages it turns almost to white with a nicely rolled flange of greenish lemon, a superb exhibition flower. **\$ 3.25 each**
- Ninth Lancer** (Large-Cupped 2a), a very large flower of superb quality and solid texture, much overlapping deep yellow perianth and a beautifully proportioned deep orange-red cup. A splendid exhibition flower of long lasting qualities. **\$ 5.00 each**
- Ormeau** (Large-Cupped 2a), a splendid show-flower of high quality, broad smooth flat perianth without a crease standing at right angles to the perfectly proportionated crown which approaches Trumpet measurements. The whole flower is of deep golden orange throughout, strong plant. **\$ 2.50 each**
- Parkmore** (Large-Cupped 2c), A.M. R.H.S. 1947, a fine flower of solid texture and beautiful poise with broad smooth, flat, pure white perianth of great substance and neatly flanged trumpet crown of faintest lemon passing to white; short neck and very strong stem, which carries the flower well above the strong upright foliage. **60 cts each; \$ 6.00 per doz.**
- Petsamo** (White Trumpet 1c), A.M. R.H.S. 1950, a very fine flower, the perianth is immensely broad, the breadth of the outer segments which overlap each other being greater than their length. The trumpet is beautifully proportioned with a widely flanged and rolled mouth. **\$ 1.25 each**
- Preamble** (Bicolor Trumpet 1b), F.C.C. R.H.S. 1949, a first early well contrasted clean Bicolor of superb quality, opening with smooth flat pure white perianth and very rich bright chrome-yellow trumpet which has a little neat flange; as the flower ages the rich colour of the trumpet fades out a little becoming more lemon in tone but never goes white, one of the best for exhibition purposes in the 1b Division. **\$ 1.50 each**
- Principal** (Yellow Trumpet 1a), F.C.C. R.H.S., one of the best Yellow Trumpets up to date, has a perfectly balanced self yellow trumpet of great substance, quality and smooth texture. Very broad flat circular perianth; trumpet beautifully finished with an evenly flanged mouth, flower well posed on a tall strong stem. Grand show-flower. **40 cts each; \$ 4.00 per doz.**
- Revelry** (Large-Cupped 2a), A.M. R.H.S. 1951, a flower of grand quality and excellent form with broad, flat soft yellow perianth of thick substance and lovely smooth texture; the crown is long, slightly expanded and of intense flaming orange-red. Tall, strong grower, first-class exhibition flower. **35 cts each; \$ 3.50 per doz.**
- Rockall** (Small-Cupped 3b), A.M. R.H.S. 1959, broad, perfectly formed perianth of pure waxy white with somewhat pointed petals and a beautiful flaming red cup of a brilliancy never seen in any other flower, a variety of exceptional grace and colour. **\$ 50.00 each**
- Rococo** (Large-Cupped 2b), F.C.C. Haarlem, a striking effective show-flower of solid texture and outstanding quality, the broad well overlapped perianth segments are pure white, whilst the well proportioned flat crown is soft yellow with a broad orange ribbon edge, very vigorous. **80 cts each; \$ 8.00 per doz.**
- Rouge** (Large-Cupped 2a), A.M. (g) Wisley 1952, a striking and very distinct break in colouring, the widespread perianth is yellow overlaid pinkish buff while the expanded cup is brilliant brick-red, it invariably attracts much admiration at shows, early and free flowering. **35 cts each; \$ 3.50 per doz.**
- Royalist** (Yellow Trumpet 1a), a most perfect clear yellow Trumpet of faultless form and good quality with wonderfully smooth fine texture. **50 cts each; \$ 5.00 per doz.**



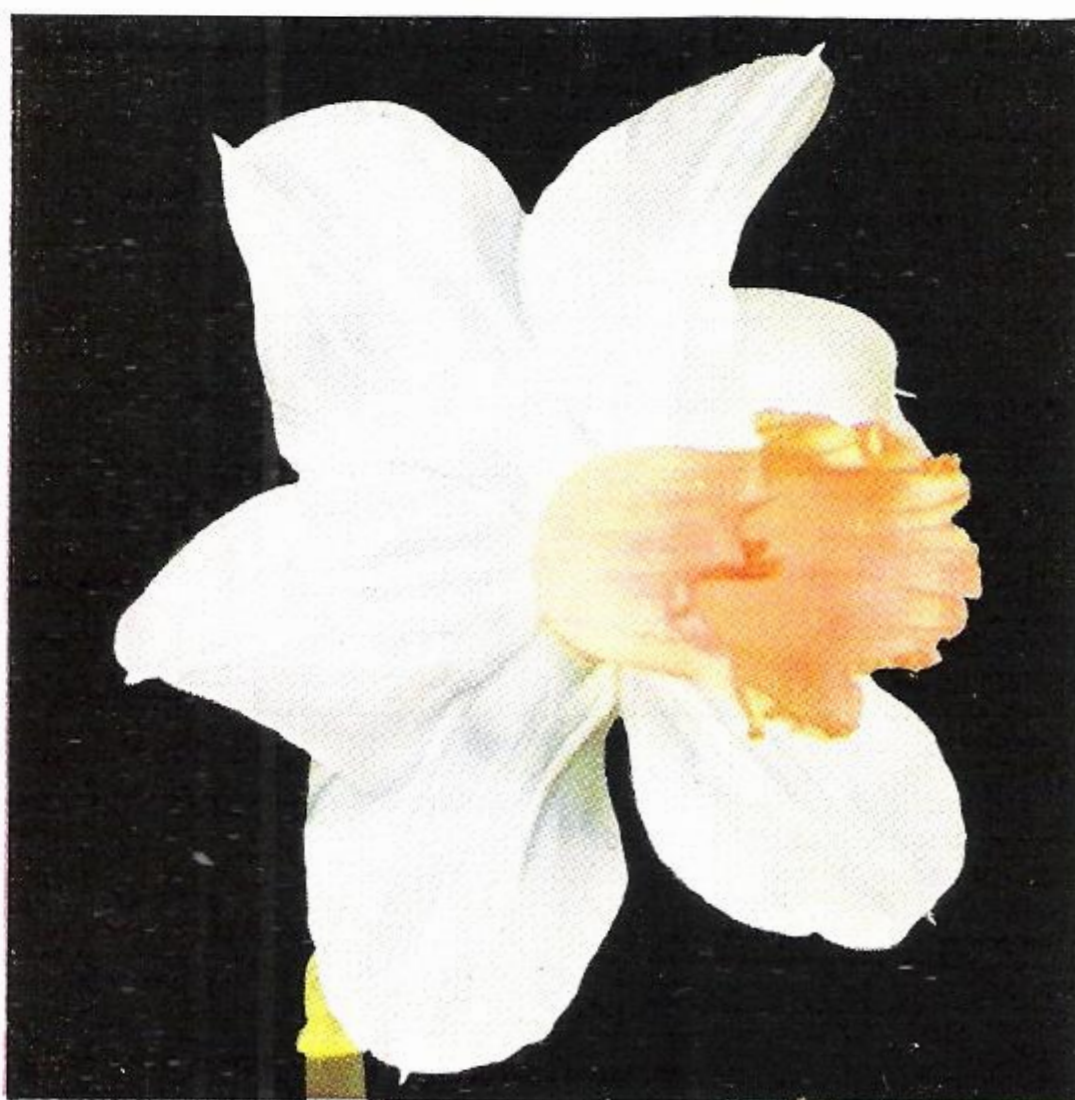
White Trumpet Mount Hood
\$ 2.55 per doz.; \$ 17.50 per 100
See page 55



Yellow Trumpet Dutch Master
\$ 3.30 per doz.; \$ 22.50 per 100
See page 53



Pink Daffodil Pink Rim
\$ 3.05 per doz.; \$ 21.00 per 100
See page 51



Pink Daffodil Mrs. R. O. Backhouse
\$ 2.05 per doz.; \$ 14.00 per 100
See page 51

- Royal Ransom** (Large-Cupped 2a), A.M. Haarlem 1955, very large flower of a showy and striking character, with broad, shovel-pointed, heavy textured segments of a soft buff colour, which turns to pinkish as flower ages; medium-sized orange-red crown. 50 cts each; \$ 5.00 per doz.
- Salmon Trout**, see under pink Daffodils page 51.
- Samite** (White Trumpet 1c), F.C.C. (e) A.M. (e.g.) R.H.S., another recent introduction of superlative quality an exquisite self-ivory-white flower of most perfect form and balance and the very finest and smoothest thick velvety texture, tall vigorous plant. 50 cts each; \$ 5.00 per doz.
- Scapa** (White Trumpet 1c), A.M. (e.g.) Haarlem 1949, a splendid and immense flower of wonderful texture, uniform white throughout, smooth overlapping perianth and well proportioned, neatly flanged trumpet, vigorous grower. 40 cts each; \$ 4.00 per doz.
- Signal Light** (Large-Cupped 2b), A.M. R.H.S. 1954, the broad rounded overlapping perianth is pure white and of great substance and quality, the very large saucer shaped crown is an inch and three quarters across, bright glowing orange-red with a slight frill. One of the most striking red and white flowers which are practically sunproof. \$ 5.00 each
- Silver Lining** (Large-Cupped 2c), A.M. Haarlem 1948, a fine show-flower of most perfect symmetry and balance, with smooth pure white perianth of great substance and trumpet-shaped crown of pale creamy-white, which passes to white when flower ages. 80 cts each; \$ 8.00 per doz.
- Sincerity** (Bicolor Trumpet 1b), F.C.C. R.H.S. 1940, broad flat, clean cut rounded pure white perianth of flawless smoothness and clear lemon trumpet with a most beautifully rolled-back brim, one of the most perfect show-flowers yet seen, faultlessly regular and perfect in form and finish. Late flowering. 40 cts each; \$ 4.00 per doz.
- Slieveboy** (Yellow Trumpet 1a), a large self-coloured yellow Trumpet of perfect form and balance and superb satin-smooth texture. Flowers are carried on stiff stems of good length well above the upright green foliage. \$ 7.00 each
- Spellbinder** (Reversed Trumpet 1d), A.M. R.H.S. and Haarlem, a large flower of the most wonderful and entirely distinct clear luminous greeny sulphur-lemon, when fully developed the inside of the flanged trumpet passes almost to white, while the outside of the trumpet retains its colour and the serrated brim is tipped with sparkling lemon, most attractive and always much admired. \$ 1.50 each
- Spitzbergen** (Bicolor Trumpet 1b), A.M. R.H.S., a magnificent flower of majestic proportions having broad overlapping ivory-white perianth of great substance, large bold trumpet nicely flanged and well rolled back at brim which opens pale primrose and gradually whitens with age, taking a considerable time to develop fully. 35 cts each; \$ 3.50 per doz.
- Stadium** (Large-Cupped 2b), A.M. (g) R.H.S., broad flat pure white perianth of immense size with bright yellow flat crown enormously expanding and heavily frilled at mouth, a flower of great substance and perfect carriage standing all weathers. 60 cts each; \$ 6.00 per doz.
- Statue** (Large-Cupped 2b), A.M. R.H.S. and Midland Daffodil Society 1947, a most imposing giant bicolor, large cup of splendid quality and substance, having broad flat widespread clear white perianth and large well-proportioned bright lemon crown. A shortnecked flower on a very tall strong stem. \$ 1.75 each
- St. Egwin** (Large-Cupped 2a), F.C.C. (e) R.H.S., the perianth segments are broad and overlapping, slightly spoonshaped of the most perfect smooth texture and wonderful substance; the cup is short and beautifully proportioned. The whole flower is uniform clear soft yellow; very strong grower. 50 cts each; \$ 5.00 per doz.
- Sun Chariot** (Large-Cupped 2a), A.M. R.H.S. 1951, F.C.C. Haarlem 1956, a large and striking flower of enormous size, the broad flat rather pointed perianth is deep golden-yellow and the well proportioned goblet-shaped cup is solid glowing orange-red, sun-proof and very lasting. 90 cts each; \$ 9.00 per doz.
- Swansdown** (Double 4), A.M. Haarlem 1951, this beautiful double variety is quite distinct from any other, large milk-white flower of great substance with very broad circular overlapping outer segments and a double centre of white feathery looking petals, very attractive. \$ 2.00 each
- Tamino** (Large-Cupped 2a), A.M. R.H.S. 1943, a very fine exhibition flower of perfect modelling and quality, having broad rich deep yellow perianth and shallow fluted cup of dark brilliant-red. 50 cts each; \$ 5.00 per doz.
- Tannhauser** (Large-Cupped 2a), A.M. 1950, a magnificent large flower of splendid substance, broad overlapping deep yellow perianth with a large flat yellow crown widely margined with deep orange-red. Most attractive show-flower, also very desirable for the garden, recommended. 40 cts each; \$ 4.00 per doz.
- Trousseau** (Bicolor Trumpet 1b), F.C.C. (e) A.M. R.H.S. 1947, an exquisite Bicolor Trumpet of superb quality, perfect form, great substance and fine satin-like texture, very broad smooth flat pure white perianth and well proportioned straight neatly flanged trumpet which opens soft-yellow and passes gradually to a most lovely rich buff rosy-cream. 60 cts each; \$ 6.00 per doz.

- Truth** (Large-Cupped 2c), F.C.C. (e) A.M. R.H.S. 1956, the very flat and smooth perianth stands at right angles to the beautifully formed and evenly flanged large trumpet-shaped crown, purest white throughout, a flower of faultless form and exceptional quality. **60 cts** each; \$ **6.00** per doz.
- Tudor King** (Bicolor Trumpet 1b), a brilliantly contrasted bicolor trumpet of very high quality with broad, flat, very smooth pure white perianth of great substance and nicely proportionated long trumpet of deep lemon yellow widely flanged and serrated at the mouth, a great addition to this section. **\$ 12.00** each
- Tudor Minstrel** (Large-Cupped 2b), A.M. R.H.S. 1950. Very symmetrical large flower, broad overlapping pure white perianth of thick waxy substance and a beautiful widely expanded crown of solid orange-scarlet, a show-flower of the highest quality for its fine proportions and perfect carriage. **\$ 4.00** each
- Tuskar Light** (Large Cupped 2b), very large flower with a broad, flat pure white perianth of splendid substance and a very large, flat pale citron crown with a broad margin of clear bright red, a most telling exhibition-flower. **50 cts** each; \$ **5.00** per doz.
- Vigil** (White Trumpet 1c), A.M. R.H.S. 1956, a really superb very large pure icy-white trumpet of fine parchment-like texture, having a broad sharp pointed perianth and gracefully proportionated well flanged trumpet. Strong grower with beautiful blue-green foliage. **\$ 5.50** each
- Virtue** (Large-Cupped 2a), A.M. R.H.S. 1950, a flower of the firmest texture and beautiful self clear brilliant golden yellow, being of faultless symmetry and quality; broad, perfectly smooth, flat perianth of model form standing at right angles to the straight sided nicely flanged and serrated trumpet, excellent exhibition-flower. **\$ 1.00** each
- Wexford** (Yellow Trumpet 1a), a medium sized flower of very fine smooth quality of a uniform clear soft golden yellow colour throughout, the perianth segments are beautiful smooth and flat, slightly shovel-pointed, standing at right angles to the trumpet, which is nicely expanded and frilled at the mouth. This flower is a trumpet but very near the border line, strong robust plant. **\$ 1.75** each
- White Lion** (Double 4), F.C.C. Haarlem, A.M. Wisley 1958, this very striking novelty is entirely distinct from any other producing a large waxy-white flower of fine substance, very broad overlapping outer segments, with a centre of double petals slightly intermingled with soft yellow, very strong plant. **40 cts** each; \$ **4.00** per doz.
- White Tartar** (White Trumpet 1c), F.C.C. Haarlem 1950, a superb flower of faultless form, balance and finish, purest white throughout, immensely broad smooth widely overlapping white perianth standing at right angles to the perfectly proportioned trumpet, which has a wide evenly rolled flange short neck and very strong stem. **\$ 1.25** each
- White Triumphator** (White Trumpet 1c), A.M. Haarlem, a most impressive trumpet of immense size with very broad perianth segments, forming an almost perfect circle and a very large, widely flanged and serrated trumpet, a huge flower of stately carriage well posed on a stout stem. **\$ 2.00** each
- Zero** (Large-Cupped 2c), one of the finest White Daffodils raised by Mr. Guy L. Wilson, a glorious flower measuring 5½ inches in diameter, very large broad flat widespread perianth, the beautiful vase-shaped crown has a slightly expanding bell-mouth, pure icy-white throughout with lovely deep green perianth tube, tall strong stem and shortnecked, strong grower. **\$ 2.00** each

1959 BALLOT OF DAFFODIL VARIETIES FOR EXHIBITION FROM EACH DIVISION

Each year, on the occasion of the great Daffodil Show of the Royal Horticultural Society, London, England, twenty daffodil experts take part in ballots of Daffodil varieties suitable for a particular purpose. We thought it to be a good idea to re-print the 1959 ballot of the best Varieties for Exhibition from each Division, while this may be of special interest to those who take part in Daffodil Competition Shows. All these varieties are also most suitable for the garden.

<i>division</i>	<i>name</i>	<i>division</i>	<i>name</i>	<i>division</i>	<i>name</i>
1a	Kingscourt	2a	Graigywarren	5a	Rippling Waters
	Golden Rapture		Revelry		Tresamble
	* King's Ransom	2b	Tudor Minstrel	5b	Silver Chimes
1b	Preamble		Arbar	6	Jenny
	* Newcastle		Signal Light		Charity May
	Trousseau	2c	Ave	7a	* Sweetness
1c	Empress of Ireland		Ludlow	7b	Chérie
	Cantatrice		* Ardbane		* Sweet Pepper
1d	Spellbinder	2d	Binkie		Trevithian
2a	Galway	3a	Chungking	8	* Chinita
	Ormeau		* Doubtful		* Glorious
	Ceylon	3b	Matapan		Martha Washington
	* Vulcan		* Mahmoud		Geranium
	Border chief	3c	Chinese White	9	Cantabile
	Air Marshal	4	Double Event		* Milan
					* Sea-green

Varieties marked * are not offered in our catalogue.

New Pink Daffodils

There is no official section of these Pink Daffodils registered in the R.H.S. classification, but their beauty and popularity seem to ask that they should be offered in a special group to assist Customers to make their selection. It should be remembered that most varieties of Pink Daffodils do not show their colour until the flower is fully developed.

Champagne (2b), a very showy variety with pure white overlapping perianth, large cup of pale cream, broadly edged apricot-pink turning salmon-pink as flower ages. **40 cts** each; **\$ 4.00** per doz.

EASTER BONNET (2b), a distinct flower of exceptional charm and refinement, broad overlapping white perianth and beautifully finished creamy-white trumpet with a heavily frilled broad salmon-pink edge. A variety of rich appearance and extremely fine show-flower. **\$ 6.00** each

Lady Bird (2b), A.M. Haarlem, a handsome flower, well formed white perianth, with trumpet-shaped cup of lovely apricot-pink throughout, one of the jewels of this section. **40 cts** each; **\$ 4.00** per doz.

Louise de Coligny (2b), A.M. Haarlem, a very distinct flower with a delicious fragrance, slightly reflexing pure white perianth and a charming trumpet-shaped crown of apricot-pink. **35 cts** each; **\$ 3.50** per doz.

Maiden's Blush (2b), pure white overlapping perianth of splendid form and texture, long trumpet-shaped crown flanged at brim of a soft blush pink slightly deeper at margin. **60 cts** each; **\$ 6.00** per doz.

MRS. R. O. BACKHOUSE (THE PINK DAFFODIL) (2b), one of the choicest that may be seen in the garden, a variety of quite unique colouring, large trumpet shaped crown of a full shell-pink shaded deep pink at brim, perianth ivory-white and slightly reflexed, long lasting, it should not be missed in any collection of Daffodils as it never fails to attract a lot of attention (see illustration page 48). **\$ 2.05** per doz.; **\$ 14.00** per 100

Pink Fancy (2b), A.M. Haarlem, a splendid free flowering variety with overlapping white perianth and apricot cup broadly margined soft pink very valuable for cutting and for the garden very free increaser. **\$ 2.20** per doz.; **\$ 15.00** per 100

Pink Isle (2b), P.C. R.H.S. 1954, a fine 'pink' flower of medium size and first class quality with broad smooth pure white perianth and a perfectly proportioned cup of a most charming shade of pink, very vigorous and free-flowering. **\$ 3.00** each

PINK RIM (2b), A.M. Haarlem, this variety has a solid white well formed perianth, cup soft cream with a distinct pink rim, a valuable introduction and good garden plant (see illustration page 48). **\$ 3.05** per doz.; **\$ 21.00** per 100

Rosario (2b), a most charming flower of nearly trumpet character and measurements, having broad smooth pure white perianth, the trumpet-shaped crown which is gracefully flanged and frilled is of very pale soft primrose shell-pink, in good seasons it becomes almost entirely pink. **\$ 1.25** each

Rose Caprice (2b), A.M. R.H.S. 1955, a great addition to the pink section with very broad, flat and rounded, pure white perianth of waxy texture and large rather expanding crown of clear pink slightly paler towards the base, which is cool-green. A really lovely show-flower. **\$ 15.00** each

Rose of Tralee (2b), A.M. Haarlem 1950, this remarkable flower is of beautiful form and quality, having pure white perianth pointed at the tips, long nicely flanged crown of rosy apricot-pink right down to the base passing off white before the flower dies. **40 cts** each; **\$ 4.00** per doz.

Rosy Sunrise (2b), F.C.C. Haarlem, this lovely variety with its trumpet-shaped cup can be described as one of the most beautiful of the pink varieties, the perianth is of a primrose white, while its cup is creamy yellow with a heavily frilled very delicate apricot-rose edge. **40 cts** each; **\$ 4.00** per doz.

Salmon Trout (2b), F.C.C. (e) A.M. R.H.S. 1952. Undoubtedly one of the finest pink Daffodils yet raised, a perfect show-flower of moderate size and faultless form, having broad purest white flat perianth of solid texture which stands at right angles to the well proportioned trumpet-shaped vivid pink crown, a variety of unequalled beauty. **\$ 12.50** each

Siam (2b), pure white perianth, well-formed and of good substance, wide expanding frilled cup of an apricot tint changing into soft pink, a most attractive and striking fragrant flower, carried on a strong stem. **40 cts** each; **\$ 4.00** per doz.

TOSCANINI (2b), a beautiful variety of great distinction and noble form, broad pure white, much overlapping perianth of splendid substance, the ivory-white crown with a broad apricot-pink band gives the nicely proportioned flowers a very distinguished appearance, a very fine garden variety. **\$ 2.20** per doz.; **\$ 15.00** per 100

Wild Rose (2b), P.C. R.H.S. 1946, a real advance in pink colouring as the cup is quite definite rosy-pink to the base, the colour being in the main retained till the flower dies. The pinkest cup yet raised, not a large flower but of pleasing form. Attractive novelty. **80 cts** each; **\$ 8.00** per doz.

Collections of Daffodils and Narcissi

Collections for the garden are made up from our named varieties and include selections from the most important Divisions, all of proven merit and will be a valuable addition to the garden. Purchasers may rely upon getting extremely good value.

25 Bulbs,	5 each of	5 varieties,	our selection	\$ 4.00
50 "	10 "	" "	5 "	" "	\$ 7.50
100 "	10 "	" "	10 "	" "	\$ 14.00
250 "	25 "	" "	10 "	" "	\$ 32.00
1000 "	100 "	" "	10 "	" "	\$ 120.00

Collections for bowls, pots and early forcing. Customers may rely upon getting the right varieties, we take particular care to select suitable sorts of great beauty for indoor culture.

24 Bulbs,	6 each of	4 varieties,	our selection	\$ 4.00
48 "	6 "	" "	8 "	" "	\$ 8.00
100 "	10 "	" "	10 "	" "	\$ 16.00

SPECIAL COLLECTIONS OF DAFFODILS FOR EXHIBITION

In these collections we include the most reliable varieties from the most important Divisions which are offered in three different values, in each case at a good saving. We feel sure that intending purchasers will be very pleased with our selections, they are of splendid value.

36 Bulbs, 3 each of 12 Exhibition varieties \$ 12.00, \$ 16.00 or \$ 20.00

De Jager's Superior Mixtures of Daffodils

Trumpet Daffodils Mixed For Naturalizing. This mixture is carefully made up from named varieties and includes Yellow, Bicolor and White Trumpets in proper proportions so as to give a marvellous display in borders, naturalized or grown for cutting.

All first size flowering bulbs. \$ 2.05 per doz.; \$ 14.00 per 100; \$ 125.00 per 1000

Large and Small-Cupped Narcissi Mixed. A mixture which includes a varied selection of varieties of the Narcissi Divisions, creating a striking effect.

All first size flowering bulbs. \$ 1.80 per doz.; \$ 12.00 per 100; \$ 105.00 per 1000

Red-Cupped Narcissi Mixed. An extremely beautiful and striking mixture of brightly coloured red-cupped or red-crowned varieties of the Poeticus, Large- and Small-Cupped section, giving a selection of a large number of different varieties.

All first size flowering bulbs. \$ 1.85 per doz.; \$ 12.50 per 100; \$ 110.00 per 1000

Narcissi and Daffodils All Kinds Mixed for Naturalizing. We offer a fine mixture of Narcissi and Daffodils, especially made up from named varieties which are particularly suitable for naturalizing and large plantings in clumps in your shrubbery border, in woodlands, herbaceous borders, orchards, in grass and for liberal plantings for cutting.

All first size flowering bulbs. \$ 1.90 per doz.; \$ 13.00 per 100; \$ 115.00 per 1000

AWARDS TO MERITORIOUS VARIETIES OF DAFFODILS AND NARCISSI

Meritorious varieties of Daffodils and Narcissi are qualified with various awards by the Daffodil Committees of the Royal Horticultural Society of London, of the Royal Bulb Growers' Society of Haarlem, Holland and the Midland Daffodil Society.

The awards given at the R.H.S.:

- F.C.C. - First Class Certificate
- A.M. - Award of Merit
- P.C. - Preliminary Commendation

The fact for which the award was qualified:

- (e) - as a show-flower
- (c) - as a variety for cutting
- (p) - as a variety for cultivation in pots, pans or bowls

The awards given at Haarlem:

- F.C.C. - First Class Certificate
- A.M. - Award of Merit
- F.C.E.F.A. - First Class Early Forcing Award
- F.C.F.A. - First Class Forcing Award
- E.F.A. - Early Forcing Award
- F.A. - Forcing Award

- (f) - as a market variety for forcing
- (m) - as a market variety for cutting from the open
- (g) - as a variety for garden decoration
- (r) - as a variety for the rock-garden
- (a) - as a variety for the alpine house



White Trumpet Mount Hood

Division I - Trumpet Narcissi

Distinguishing characters: One flower to a stem; Trumpet or Corona as long as, or longer than the perianth segments.

DIVISION IA - YELLOW TRUMPETS

Yellow and sulphur-coloured Trumpet Narcissi

- Burgemeester Gouverneur** (22), F.C.C. Haarlem, a very large and beautiful flower, golden yellow throughout, perianth flat and broadly overlapping, while the large smooth trumpet is slightly rolled back at rim, a noble Daffodil which we especially recommend. \$ 3.05 per doz.; \$ 21.00 per 100
- Dutch Master** (20), A.M. (p) R.H.S. 1948, a rich golden-yellow trumpet of a remarkable refined form, broad overlapping perianth with a deeply serrated large trumpet, a vigorous grower, excellent forcer and fine show-flower (see illustration page 48). \$ 3.30 per doz.; \$ 22.50 per 100
- GARRON** (24), A.M. (e.g.) R.H.S. and Haarlem 1948, a magnificent refined flower of unusual quality and size, has a great long pointed and slightly waved perianth of smoothest velvety texture and thick substance, trumpet nicely serrated of beautiful deep clear primrose or soft full self lemon, enormously vigorous and grand garden plant. \$ 3.05 per doz.; \$ 21.00 per 100
- Golden Harvest** (22), F.C.C. E.F.A. Haarlem, this brilliant Daffodil of uniform rich golden yellow with heavily serrated trumpet and lovely form, has now become one of the most popular varieties in cultivation, admired for its strong texture and its wealth of flowers either forced in pots or planted in the garden, enormous flowers and one of the first to bloom. \$ 2.90 per doz.; \$ 20.00 per 100
- Gold Medal** (22), F.C.C. Haarlem 1944, a most striking deep golden yellow Trumpet of excellent form and substance, broad overlapping rounded perianth and a well balanced not over-wide nicely serrated and flanged trumpet. Splendid for garden- and pot-culture. 40 cts each; \$ 4.00 per doz.
- Joseph McLeod** (24), F.C.C. Haarlem 1956, F.C.C. Wisley 1959, a refined new Daffodil of a self-coloured golden yellow, perfectly formed well-overlapping perianth standing at right angles to the well-balanced trumpet, which is deeply frilled at mouth, very free flowering. \$ 3.05 per doz.; \$ 21.00 per 100

- J. S. Bach** (22), a very close competitor if not an equal to 'Flower Carpet', a newer introduction of which the Dutch Growers have great expectations. The colour is uniform primrose-yellow strong grower of very free flowering habit, good forcer and fine garden variety.
\$ 2.50 per doz.; \$ 17.00 per 100
- King Alfred** (24), F.C.C. R.H.S. F.A. Haarlem, this remarkably beautiful variety is destined to remain at the head of its class for some time to come yet; its rich colour of uniform deep golden yellow is outstanding; the large gigantic trumpet is elegantly frilled at mouth and has a broad massive perianth, is of refined finish and of great substance, hence its lasting qualities both outdoors or when cut. One of the earliest to bloom, it is easily forced, very dependable. \$ 2.50 per doz.; \$ 17.00 per 100
- Magnificence** (20), F.C.C. (g.c.) R.H.S. F.C.E.F.A., the first yellow trumpet out, a very large deep golden yellow flower, gracefully waved perianth with deeply serrated trumpet, opens much before the well-known Golden Spur, which variety we have now superseded. 'Magnificence' produces a wealth of blossom and is very desirable for the garden as well as for forcing. \$ 2.50 per doz.; \$ 17.00 per 100
- Moonrise** (19), F.C.C. Haarlem 1948, a refined Daffodil of uniform lemon yellow throughout with broad overlapping perianth, the elegantly shaped trumpet is slightly expanding at mouth with a finely serrated flange. A strong garden variety and excellent show-flower. 60 cts each; \$ 6.00 per doz.
- MULATTO** (20), A.M. F.A. Haarlem, a remarkable flower of unique and striking colour, smooth flat perianth of sulphur yellow and a large expanded sulphur-coloured trumpet, the inside of which shades to almost white deep sulphur frilling at margin, vigorous grower. \$ 3.05 per doz.; \$ 21.00 per 100
- Peking** (21), A.M. Haarlem 1947, a very large lemon coloured trumpet of splendid quality and grand substance with somewhat lighter broad pointed, smooth perianth. A very vigorous garden variety of long lasting qualities. 35 cts each; \$ 3.50 per doz.
- Rembrandt** (19), A.M. Haarlem, A.M. Wisley 1959, a very early large golden-yellow trumpet of lovely carriage, petals are flat, broad and somewhat pointed and has a huge expanded trumpet which is nicely flanged at mouth, a vigorous grower, excellent for pots and a showy decorative garden variety. \$ 2.75 per doz.; \$ 18.50 per 100
- UNSURPASSABLE** (23), F.C.C. Haarlem, one of the most impressive and largest yellow trumpet daffodils in cultivation, producing colossal flowers of deepest golden yellow throughout and noble proportions, a fine show-flower, good forcer and a magnificent variety for the garden.
\$ 2.90 per doz.; \$ 20.00 per 100

DIVISION IB - BICOLOR TRUMPETS

White or Whitish Perianth with Yellow, Lemon or Pale Primrose Trumpet

- Celebrity** (17), soft creamy-white good overlapping perianth with large soft yellow trumpet, a variety of very free flowering habit and excellent forcer. \$ 2.75 per doz.; \$ 18.50 per 100
- Foresight** (19), A.M. R.H.S. 1945, a flower of absolutely first-class form and good quality with very broad, flat well overlapping milky-white perianth and perfectly proportioned neatly flanged golden trumpet. Vigorous and very free-flowering, early. 40 cts each; \$ 4.00 per doz.
- Magnet** (16), an interesting bold flower, pale cream perianth, colour of the deep golden-yellow trumpet passes into the perianth. \$ 2.55 per doz.; \$ 17.50 per 100
- Music Hall** (18), A.M. F.A. Haarlem, a handsome early Bicolor of good form, producing a magnificent large well proportioned flower with creamy white perianth and golden yellow nicely flanged trumpet. \$ 2.75 per doz.; \$ 18.50 per 100
- Oklahoma** (18), A.M. Haarlem 1948, an exquisite Bicolor Trumpet of superb quality and perfect form, very broad smooth flat pure white perianth and large deep golden yellow trumpet, a very vigorous grower of unusual substance. 40 cts each; \$ 4.00 per doz.
- President Lebrun** (18), A.M. Haarlem, a noble flower with large flat much overlapping white perianth and a creamy-yellow trumpet, very solid flower, recommended for the garden and late forcing. \$ 2.75 per doz.; \$ 18.50 per 100
- QUEEN OF BICOLORS** (18), one of the best garden varieties, doing justice to its name as one of the loveliest Bicolors, pure white overlapping perianth with canary-yellow trumpet of good form and proportions, a very vigorous grower. \$ 2.65 per doz.; \$ 18.00 per 100
- World's Favourite** (24), F.C.C. Haarlem, an exquisite Bicolor of superb quality, broad overlapping pure white perianth and soft yellow trumpet elegantly rolled back at mouth. A very robust plant with very large flowers held on strong stems, recommended for the garden.
\$ 3.05 per doz.; \$ 21.00 per 100

DIVISION IC - WHITE TRUMPETS

White or Whitish Perianth with White or nearly White Trumpet

- Angel's Wings** (18), A.M. Haarlem 1947, beautiful silvery-white throughout, a large flower of perfect form, splendid carriage and stiff substance, very broad overlapping perianth with a straight trumpet, gently serrated at mouth, vigorous grower. **40 cts** each; **\$ 4.00** per doz.
- Beersheba** (18), F.C.C. (e.c.) R.H.S., undoubtedly one of the most popular white Daffodils at present, a distinct flower of the purest white throughout, perfect flower of beautiful proportions, splendid substance and grows a vigorous plant with lovely green foliage, early flowering, voted at the R.H.S. one of the best varieties for forcing in the past twelve years. **\$ 2.75** per doz.; **\$ 18.50** per 100
- MOUNT HOOD** (20), F.C.C. (g) R.H.S. 1955, a novelty of great refinement, large pure white flowers with broad smooth perianth segments of great substance, the long pale, creamy white well-proportioned trumpet nicely rolled back at mouth soon passes to pure white, tall grower for midseason flowering, fine for pots (see illustration page 48). **\$ 2.55** per doz.; **\$ 17.50** per 100
- Mrs. E. H. Krelage** (20), F.C.C. (g) Haarlem, snowy-white perianth, its trumpet opens to a soft primrose and develops to ivory white, beautifully recurving at brim, vigorous grower, flowers are of great substance, recommended for the garden. **\$ 2.50** per doz.; **\$ 17.00** per 100

Division II - Large-Cupped Narcissi

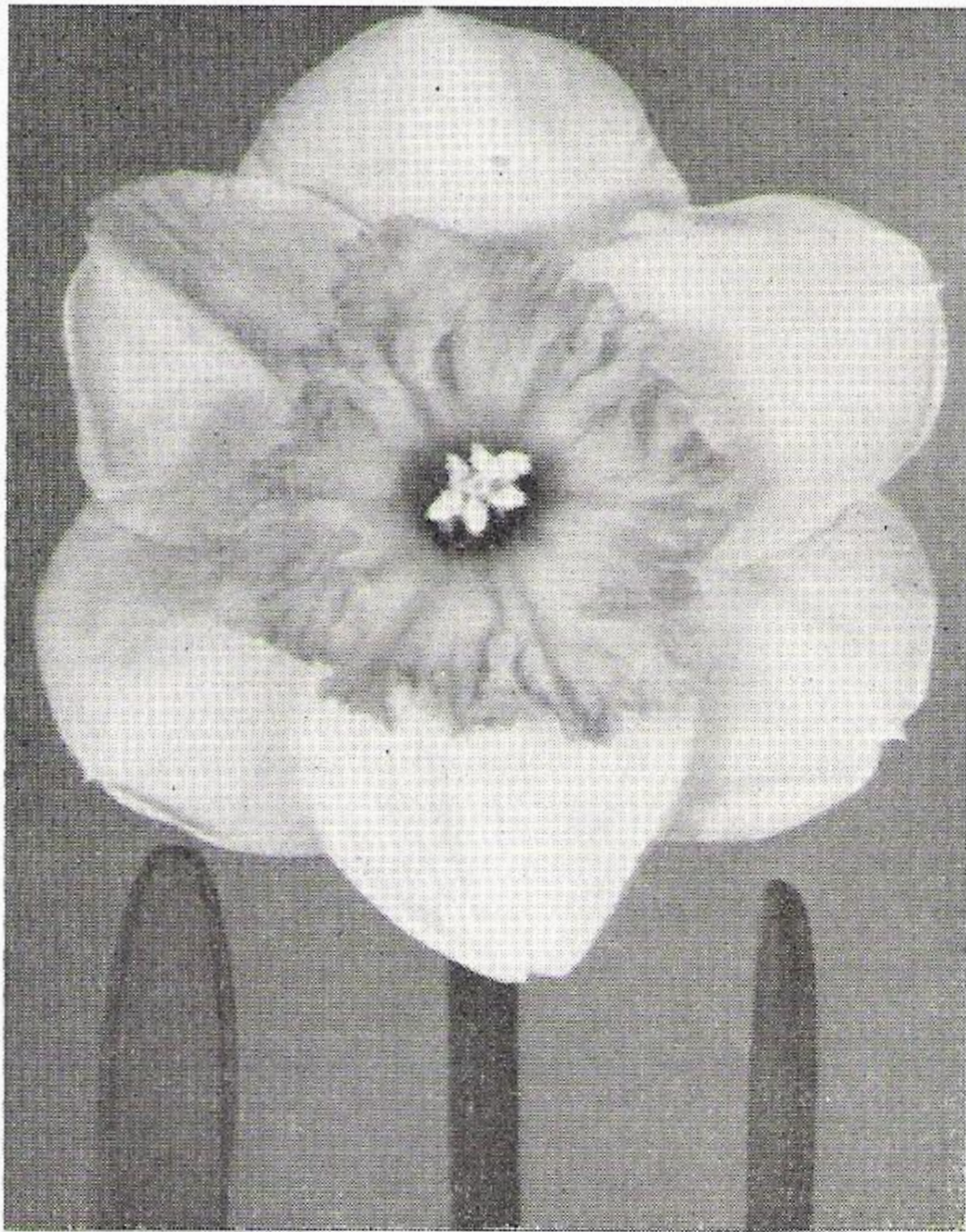
(Comprising the former Incomparabilis and large crowned Leedsii)

Distinguishing characters: One flower to a stem; Cup or Corona more than one-third, but less than equal to the length of the perianth segments.

DIVISION IIA - LARGE-CUPPED

Yellow, Lemon and Pale Primrose Perianth with yellow, pink or red-stained cups

- Adamant** (19), F.C.C. (g) R.H.S. 1953, deep saffron-yellow smooth perianth of perfect form with a rich medium-sized orange crown frilled at margin, a flower of wonderful quality and substance, well poised on a strong stem, early flowering. **\$ 3.05** per doz.; **\$ 21.00** per 100
- Aranjuez** (19), A.M. (e) R.H.S. F.C.C. Haarlem, a particular fine flower for exhibition because of its magnificent form and posture; broad even smooth clear yellow overlapping perianth of great substance with an enchanting shallow expanded crown, widely margined with deep orange-red strong grower for mid-season. **\$ 2.45** per doz.; **\$ 16.50** per 100
- Bahram** (20), F.C.C. (e) R.H.S. and Haarlem, in our opinion one of the finest yellow-red flowers up to date, flowers are of large size and perfect form, shortnecked flowers having broad smooth wide-spread, rich clear yellow perianth and perfectly proportioned rather shallow intense vivid deep orange-red crown, finely frilled at edge. **\$ 2.35** per doz.; **\$ 16.00** per 100
- Bermuda** (20), F.C.C. Haarlem, very large overlapping and smooth soft yellow perianth and a large spreading crown of clear orange, an immense flower of fine form and substance, early flowering. **\$ 2.20** per doz.; **\$ 15.00** per 100
- Birma** (20), a very striking variety of great substance and brilliant colouring, well overlapping sulphur yellow perianth and neat, vivid orange-scarlet cup. A perfect flower of great durability, strong and vigorous grower, highly recommended. **\$ 2.50** per doz.; **\$ 17.00** per 100
- CARBINEER** (18), F.C.C. A.M. (e.m.g.) R.H.S., a beautiful flower of splendid carriage and great substance, having broad flat golden-yellow perianth standing at right angles to the large bright orange-red cup, a fine flower, which holds the second place for the last five years as a variety for cutting, excellent for forcing. **\$ 2.35** per doz.; **\$ 16.00** per 100
- CARLTON** (18), F.C.C. (g) A.M. R.H.S., the immense flower has a broad perianth and large gracefully frilled crown, colour soft clear yellow throughout, much recommended for forcing in bowls or pans. **\$ 2.05** per doz.; **\$ 14.00** per 100
- Cavaliero** (17), A.M. Haarlem, a flower of vivid colouring with broad, flat, rich yellow perianth standing at right angles to the large bright red cup; good forcer. **\$ 2.50** per doz.; **\$ 17.00** per 100
- Crescendo** (18), A.M. (g) R.H.S., a striking flower of the highest quality with beautifully smooth clear yellow rounded perianth of good substance, straight, deep yellow crown, very broadly margined orange-scarlet. A very lasting flower either on the plant or when cut, good for pots. **\$ 3.05** per doz.; **\$ 21.00** per 100

**Manco**

ing crown. A fine exhibition-flower of noble form and perfection. **40 cts each; \$ 4.00 per doz.**

Han van Meegeren (18), deep golden yellow, well overlapping rounded perianth and large orange, nicely ruffled crown. A most striking flower of perfect form. **\$ 2.35 per doz.; \$ 16.00 per 100**

Indian Summer (19), A.M. Haarlem 1948, this variety has a broad very smooth perianth of great substance, a very deep intense golden yellow, while the nicely proportioned rather shallow cup is deep orange-scarlet; tall stem. **40 cts each; \$ 4.00 per doz.**

Jeanne Desor (16), much overlapping broad rounded perianth of primrose yellow with nicely fringed saffron yellow crown, a variety of splendid substance and durability and of a free flowering habit. **\$ 2.55 per doz.; \$ 17.50 per 100**

Leviathan (17), F.C.C. Haarlem, clear yellow perianth with a large expanding crown which is distinctly marked bright orange-red at margin, a striking flower of good poise, lovely for the garden, vigorous grower. **\$ 2.55 per doz.; \$ 17.50 per 100**

Mary Roozen (18), F.C.C. Haarlem 1949, large and flat well-overlapping deep yellow perianth of great substance, the large and beautifully frilled crown is deepest glowing orange throughout, a very refined flower of excellent quality. **\$ 2.45 per doz.; \$ 16.50 per 100**

Narvik (19), A.M. R.H.S. and Haarlem 1950, an outstanding and superb red and yellow of great brilliancy, perfect alike in form, quality, balance and proportion, broad clear golden yellow perianth with frilled goblet-shaped cup of deep intense orange-crimson; tall, strong grower, very fine for exhibition. **35 cts each; \$ 3.50 per doz.**

Porthilly (16), F.C.C. (e) A.M. (g.m.) R.H.S., very fine large flower with broad beautifully shaped clear yellow perianth and well proportioned open frilled cup of intensely vivid deep solid orange-red. In our opinion one of the finest large-cupped. **\$ 2.75 per doz.; \$ 18.50 per 100**

Ramillies (19), A.M. Haarlem, a noble flower of medium size, but of the very highest quality, much overlapping and flat clear golden-yellow perianth, the expanding crown is deep yellow with a distinctly marked ribbon edge of deep scarlet, of lasting quality. **\$ 2.55 per doz.; \$ 17.50 per 100**

Red Goblet (19), A.M. (c.g.) R.H.S., a pretty distinct flower, broad rounded deep golden perianth with a faint flush of pinky-buff radiating from the base of petals, solid orange-red cup of unusual shape (see illustration page 57). **\$ 3.05 per doz.; \$ 21.00 per 100**

Delibes (23), A.M. Haarlem 1950, a striking flower of high quality, large overlapping deep golden yellow perianth of beautiful rounded form with immense, broad, flat expanding cup of intense orange-red, a fine show-flower and excellent forcer.

40 cts each; \$ 4.00 per doz.

Dunkeld (19), a magnificent well-formed flower having broad smooth circular clear yellow perianth of fine substance and shallow expanded vivid orange-scarlet crown; immensely vigorous and free flowering, excellent for forcing.

\$ 2.55 per doz.; \$ 17.50 per 100

FORTUNE (20), F.C.C. (e.g.c.) R.H.S. F.C.F.A. Haarlem, this variety is generally recognized as the best Daffodil of its type that has yet been produced since the last years. It has a beautiful colour of deep lemon-yellow and a splendid flat overlapping perianth with a very large and long bold cup of coppery red-orange, is of good substance, a good grower and a free increaser, in fact it has every good point that one could wish for. Early flowering.

\$ 2.50 per doz.; \$ 17.00 per 100

Golden Triumphator (19), F.C.C. Haarlem 1955, a uniform deep golden-yellow new introduction of faultless form, thick overlapping perianth with a large spread-

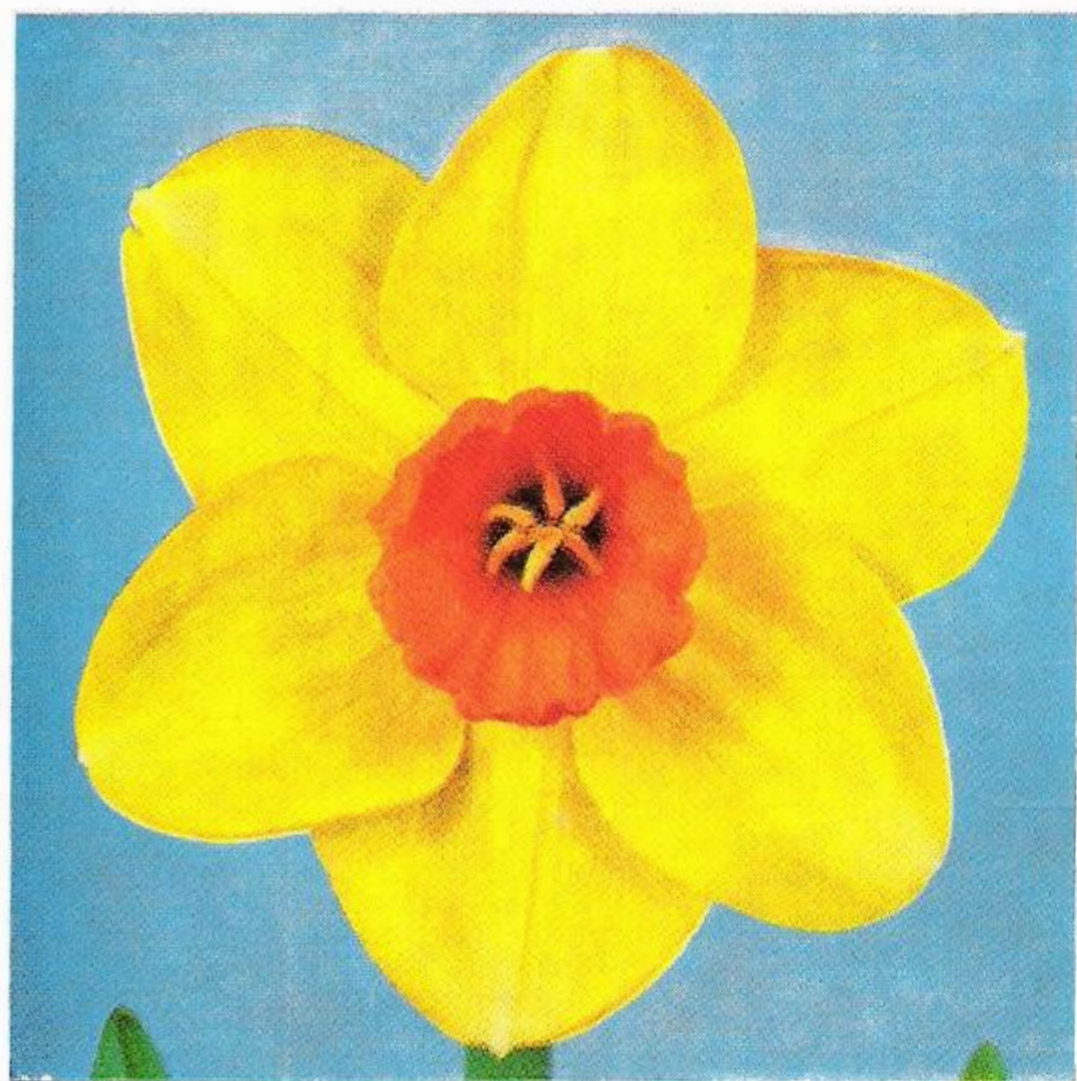
40 cts each; \$ 4.00 per doz.



Large-Cupped IIb Duke of Windsor
\$ 2.65 per doz.; \$ 18.00 per 100
See page 59



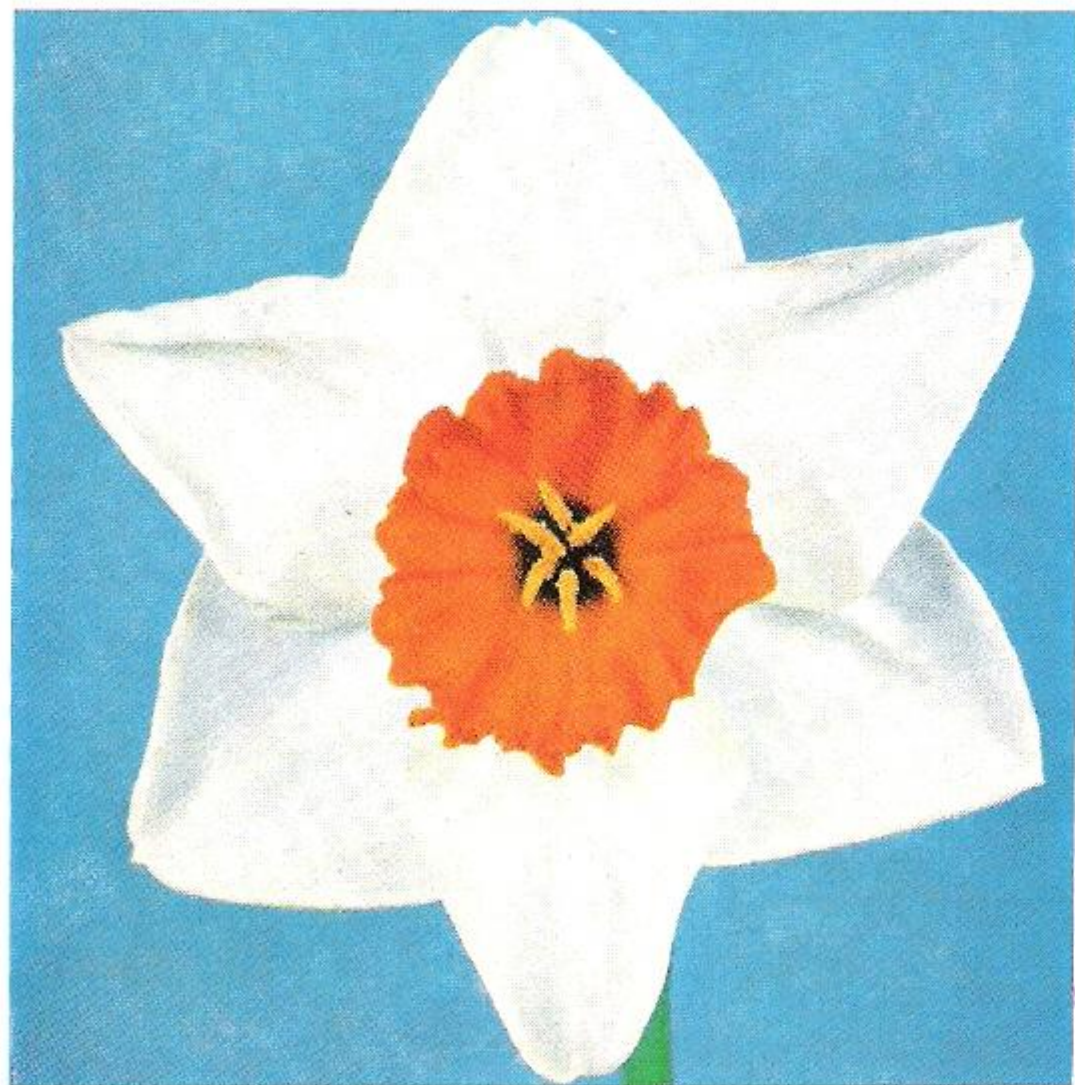
Large-Cupped IIb Polindra
\$ 2.35 per doz.; \$ 16.00 per 100
See page 61



Large-Cupped IIa Red Goblet
\$ 3.05 per doz.; \$ 21.00 per 100
See page 56



Large-Cupped IIb Fermoy
\$ 3.05 per doz.; \$ 21.00 per 100
See page 60



Large-Cupped IIb Kilworth
\$ 3.05 per doz.; \$ 21.00 per 100
See page 60



Large-Cupped IIb Marshal Tsjoekof
\$ 2.30 per doz.; \$ 15.50 per 100
See page 60



Small-Cupped IIIa Edward Buxton
\$ 2.00 per doz.; \$ 13.50 per 100
See page 62



Small-Cupped IIIb Verger
\$ 2.05 per doz.; \$ 14.00 per 100
See page 63

- Redmarley** (16), A.M. Haarlem, slightly pointed yellow perianth, the large and heavily fringed trumpet-shaped crown is intense orange-red throughout, attractive. \$ 3.05 per doz.; \$ 21.00 per 100
- René de Chalons** (18), A.M. Haarlem, a very beautiful flower of great size, broad flat pale yellow perianth with large deep yellow nicely ruffled crown perfectly proportioned, a lovely garden plant of vigorous constitution. \$ 2.35 per doz.; \$ 16.00 per 100
- Royal Crown** (18), very large flower of distinct character with broad sulphur-white perianth and a beautifully, heavily fringed and spreading crown of soft apricot, an ideal garden plant lasting long in perfect condition. \$ 2.35 per doz.; \$ 16.00 per 100
- Royal Mail** (18), F.C.C. Haarlem 1950, a fine vigorous variety of recent introduction, broad smooth overlapping perianth of a rich golden-yellow, large vivid orange-red crown frilled at mouth. \$ 2.35 per doz.; \$ 16.00 per 100
- Rustom Pasha** (18), F.C.C. (g) R.H.S. 1954, no other variety of this section enjoys such world-wide admiration as this one, with its large striking flowers of gorgeous colour, widespread pointed clear deep golden perianth, cup opens dull orange and develops to vivid tangerine scarlet, one of the very best for growing in pots when it comes with splendid colour and a first class variety for garden decoration because of its sun-proof colour, excellent for forcing. \$ 2.75 per doz.; \$ 18.50 per 100
- Scarletta** (20), a flower of very vivid colouring and splendid carriage, with broad, flat, rich yellow perianth, standing at right angles to the large, bright orange-red cup. A tall and strong growing garden variety. \$ 2.55 per doz.; \$ 17.50 per 100
- Scarlet Elegance** (16), F.A. Haarlem, one of the first to bloom in the garden and is noted for its deeply coloured scarlet crown, perianth deep yellow; very fine for cutting. Can be forced after January 15th, mid-season flowering. \$ 2.20 per doz.; \$ 15.00 per 100
- Sidney Torch** (17), A.M. Haarlem 1951, deep golden yellow perianth, very broad flat yellow crown widely margined with deep orange-red, a charming and distinct flower and in our opinion an improved Aranjuez. \$ 3.05 per doz.; \$ 21.00 per 100
- Tinker** (19), A.M. Haarlem, an early flower of great beauty and brilliant colouring, broad pointed deep golden yellow perianth with rather long-goblet-shaped vividly brilliant orange-scarlet cup, strong and vigorous grower, early. \$ 3.05 per doz.; \$ 21.00 per 100
- Trevisky** (14), A.M. (e) R.H.S., a very neat well-posed flower of exceptionally smooth firm texture, perianth clear King Alfred yellow, cup deep clear red, fine form. \$ 2.45 per doz.; \$ 16.50 per 100
- Walt Disney** (19), A.M. Haarlem, a very remarkable flower on account of its high quality and refinement, broadly overlapping star shaped deep golden-yellow perianth and a well proportioned solid orange cup, a splendid exhibition flower. \$ 2.55 per doz.; \$ 17.50 per 100
- Yankee Clipper** (20), A.M. (g) R.H.S. 1959, the broad, smooth overlapping perianth is of a soft yellow and the large frilled cup is intense vivid orange-red. A magnificent tall growing garden variety and excellent forcer. 45 cts each; \$ 4.50 per doz.
- YELLOW SUN** (17), F.C.C. E.F.A. Haarlem 1949, uniform golden yellow throughout, an immense flower of perfect form, well overlapping pointed petals, large trumpet shaped cup, nicely frilled at mouth, producing a wealth of flowers. \$ 2.90 per doz.; \$ 20.00 per 100

DIVISION IIB - LARGE-CUPPED

White or Whitish with yellow, pink or red-stained cups

- BROOKVILLE** (17), a very large and substantial flower with broad, flat well overlapping white perianth and completely heavy-ruffled lemon cup, a garden variety of great merit for its strong constitution and long lasting qualities. \$ 3.05 per doz.; \$ 21.00 per 100
- Beirut** (18), a fine large flower with very round ivory-white perianth of thick substance, a large saucer-shaped yellow crown heavily banded with bright red. 35 cts each; \$ 3.50 per doz.
- Brunswick** (18), F.C.C. (e.g.) R.H.S., a very early variety, producing a very tall flower of perfect form, has a beautifully modelled flat clean-cut white perianth of very firm texture, the perfectly balanced crown is just like a short nicely flanged and frilled trumpet, icy-white in the base and gradually shading up to lemon at the brim, excellent for forcing. \$ 2.65 per doz.; \$ 18.00 per 100
- CRITERION** (17), A.M. Haarlem, beautiful smooth white perianth of excellent form, the large expanded yellow crown has a narrow but very distinct edge of bright orange, tall and sturdy grower medium late; an excellent show-flower. \$ 2.35 per doz.; \$ 16.00 per 100
- Deanna Durbin** (17), A.M. Haarlem, a magnificent flower of fine form and carriage, pure white perianth with orange crown and lovely dark green upright foliage, particularly handsome variety when grown in pots, very free flowering, recommended. \$ 2.45 per doz.; \$ 16.50 per 100
- Dick Wellband** (16), a large pure white perianth with a bold expanded crown of brilliant flame-orange, one of the good merits is that its crown does not fade in the sun but rather intensifies as the flower ages, a strong late flowering variety. \$ 2.65 per doz.; \$ 18.00 per 100
- DUKE OF WINDSOR** (18), F.C.C. Haarlem, one of the choicest John Evelyn seedlings, thick pure white overlapping segments with a broad flat expanding cup of lovely apricot-orange, beautifully ruffled, becoming a lovely pale yellow as the flower ages, a charming garden plant (see illustration on page 57). \$ 2.65 per doz.; \$ 18.00 per 100

- Eddy Canzony** (20), A.M. Haarlem 1952, broad even smooth pure white perianth of great substance with a flat soft yellow crown widely margined orange. A garden variety and show-flower of great beauty. **60 cts** each; **\$ 6.00** per doz.
- Fermoy** (18), F.C.C. A.M. (e), a magnificent flower of great size and fine quality with very large pure white perianth and well proportioned beautifully frilled bowl-shaped crown, bright orange-red at the mouth shading to gold in the base (see illustration page 57). **\$ 3.05** per doz.; **\$ 21.00** per 100
- Flamenco** (17), F.C.C. (g) R.H.S., an exquisite flower with broad creamy white perianth and expanded deep seville-orange crown on a strong stem, a good quality of this flower is that the crown does not fade in sunshine, one of the five best varieties for cutting. **\$ 2.45** per doz.; **\$ 16.50** per 100
- FLOWER RECORD** (18), E.F.A. Haarlem, a fine variety of recent introduction, a bold flower with very large pure white perianth and a large expanding crown of orange with bright orange at margin, named 'Flower Record' because of its very free flowering habit, one of the best for forcing, recommended. **\$ 2.05** per doz.; **\$ 14.00** per 100
- Glorification** (19), A.M. Haarlem, a very attractive flower of brilliant colour with well-formed flat perianth of the purest white and a large saucer shaped, clear yellow crown with a broad ribbon edge of soft orange, tall and strong grower and excellent show-flower. **\$ 2.55** per doz.; **\$ 17.50** per 100
- Granville** (15), broad overlapping canary-yellow perianth, shading to creamy white when flower ages, large broadly expanding vivid orange crown, strongly ruffled; a very impressive and free flowering variety for the garden. **\$ 2.75** per doz.; **\$ 18.50** per 100
- John Evelyn** (18), A.M. (e) R.H.S. and F.C.C. Haarlem, producing very large and beautiful flowers, solid creamy-white perianth, large cup and well open at mouth with double frilling at margin of striking apricot-orange colour, excellent. **\$ 2.35** per doz.; **\$ 16.00** per 100
- Kilmorna** (17), A.M. R.H.S., a large flower, after the style of Brunswick, but flowering later. Broad rounded flat pure white perianth of good substance and a nicely proportioned cup of palest primrose with a distinctly deeper coloured frill at mouth. **35 cts** each; **\$ 3.50** per doz.
- Kilworth** (19), F.C.C. (e.g.) R.H.S., an outstanding variety, large flower with broadly overlapping white perianth and perfectly proportioned bowl-shaped crown of intense dark orange-red with a touch of dark green in the eye, one of the best varieties in the red and white class, vigorous grower; sunproof (see illustration page 58). **\$ 3.05** per doz.; **\$ 21.00** per 100
- Leeuwenhorst** (18), A.M. Haarlem, a beautiful large flower, creamy white fine overlapping perianth with a lemon-yellow crown prettily edged orange-red, very free flowering and strong grower. **\$ 2.35** per doz.; **\$ 16.00** per 100
- Lemon Cup** (17), pure white perianth extremely broad and flat, large expanding lemon crown, heavily frilled at rim, a flower of unusually good substance and very free flowering. **40 cts** each; **\$ 4.00** per doz.
- Majarda** (14), strong and broad creamy-white perianth of splendid substance with large flat orange yellow crown, a very solid flower of heavy texture and vigorous garden variety. **\$ 3.05** per doz.; **\$ 21.00** per 100
- Manco** (18), solid ivory-white perianth with large showy deep golden yellow expanding cup with broad orange ruffles, a grand flower of excellent quality and a fine plant for all weather conditions (see illustration page 56). **\$ 3.05** per doz.; **\$ 21.00** per 100
- Marshal Tsjoekof** (20), a large orange and white flower, snow-white perianth and a broad smooth widely expanded crown of pale apricot-orange with a prettily frilled edge of intense orange, an exquisite garden and show-flower, one of the best for pot-culture (see illustration page 58). **\$ 2.30** per doz.; **\$ 15.50** per 100
- Mary Blonk** (17), large, much overlapping white perianth with a beautifully frilled canary-yellow crown, edged orange, an excellent garden variety because of its strong and free flowering habit. **40 cts** each; **\$ 4.00** per doz.
- Mata Hari** (20), can best be described as an improved John Evelyn, but much more refined in quality, fine overlapping white perianth and a pronounced soft orange crown, excellent for forcing as well as an outstanding garden variety. **\$ 2.35** per doz.; **\$ 16.00** per 100
- Monique** (19), A.M. F.A. Haarlem, considered one of the best in its section, the white perianth is smooth and much overlapping with a large shallow saucer-shaped crown of yellow-orange edged with a clear narrow band of bright orange, a perfect show-flower of great substance and exquisite beauty. **\$ 2.35** per doz.; **\$ 16.00** per 100
- Mount Tacoma** (20), A.M. Haarlem, very large star-shaped creamy-white perianth, wide expanding soft primrose-yellow crown, slightly deeper at margin, somewhat frilled at the edge, excellent cut-flower and lovely garden plant. **\$ 2.55** per doz.; **\$ 17.50** per 100
- Orange Bride** (18), F.C.C. Haarlem, a beautiful and refined flower with flat overlapping pure white perianth while the tangerine-orange crown is beautifully frilled giving the flower a lovely appearance. **\$ 2.45** per doz.; **\$ 16.50** per 100
- Orange Monarch** (15), broad much overlapping round and flat ivory-white perianth with very large ruffled brilliant orange flat crown, a very free flowering variety of great substance and excellent garden variety. **50 cts** each; **\$ 5.00** per doz.

PAPILLON BLANCHE (20), a most remarkable novelty, large overlapping icy white perianth of splendid texture with beautifully pure white flat splitted crown, giving the impression of a white Butterfly. Very attractive and outstanding for flower decoration. \$ 2.35 per doz.; \$ 16.00 per 100

Patriarch (18), a fine bold flower of distinct character, having broad solid pure white perianth of good substance and large shallowish apricot-orange crown, beautifully frilled which hold its colour well, makes a most handsome and striking garden plant. \$ 3.05 per doz.; \$ 21.00 per 100

Penvose (19), F.C.C. (e.g.) R.H.S. 1953, a remarkable and distinct flower, broad white perianth of much substance standing at right angles to the well flanged neat rather trumpet-like crown, which opens pale chrome-yellow soon passing to a pleasing buff, tall strong stem and deep bluish-green foliage.

35 cts each; \$ 3.50 per doz.

Polindra (20), F.C.C. (e.g.) R.H.S. and Haarlem, an amazingly beautiful flower with broad well overlapping pure white perianth of great substance and smoothest texture, large well finished clear yellow crown, much admired for its well proportioned flower; recommended for exhibition as well as for the garden, holds second place of varieties for cutting (see illustr. page 57.)

\$ 2.35 per doz.; \$ 16.00 per 100

Red Bird (18), F.C.C. Haarlem, a distinct and charming variety, broad much overlapping, snow-white perianth with a rich coloured deep orange-red cup.

\$ 2.35 per doz.; \$ 16.00 per 100

Selma Lagerlöf (18), A.M. Haarlem, this well formed flower of singular beauty has a broad smooth pure white perianth, the very large orange crown is rather shallow and slightly paler at centre, a charming garden variety.

\$ 2.55 per doz.; \$ 17.50 per 100

Sempre Avanti (18), A.M. Haarlem, a distinguished fine introduction of great beauty, flower is large and well formed with creamy-white perianth and a bold orange cup, may be gently forced.

\$ 2.45 per doz.; \$ 16.50 per 100

Smiling Queen (18), a beautiful flower of great distinction, a very broad much overlapping white perianth and a gracefully frilled orange cup, a good flower of enchanting appearance.

\$ 2.35 per doz.; \$ 16.00 per 100

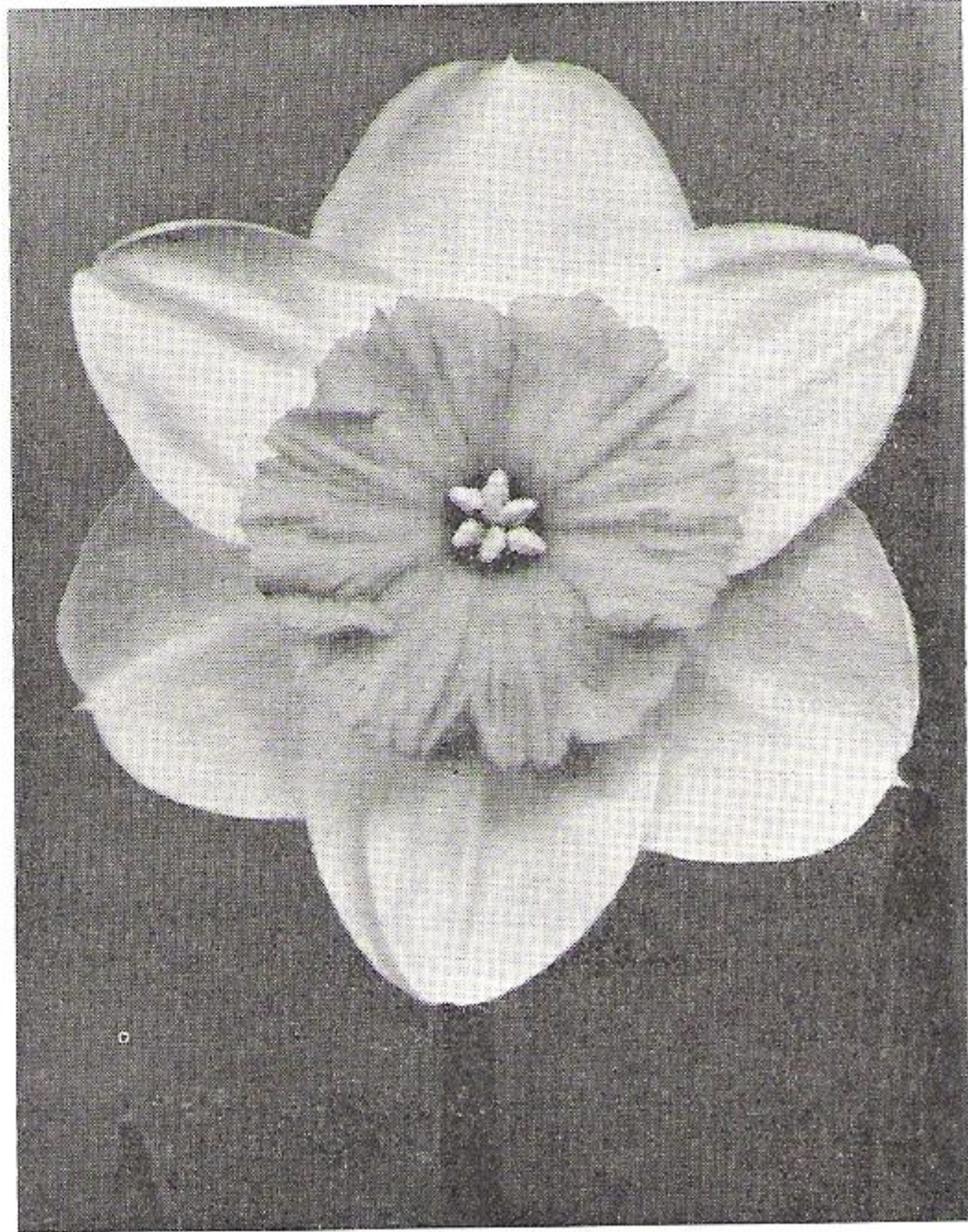
Spencer Tracy (20), F.C.C. Haarlem 1949, a magnificent garden flower of striking beauty, broad overlapping pure white perianth and a very large flat crown of vivid orange wonderfully frilled, colour deepening at edges, ideal for indoor cultivation.

\$ 2.45 per doz.; \$ 16.50 per 100

St. Louis (18), F.C.C. (g) Haarlem 1953, large widespread pure white and much overlapping perianth, flat soft yellow crown, prettily edged with sunproof vermilion-red, a variety of striking beauty and of extra-ordinary substance and durability, strongly recommended. \$ 2.55 per doz.; \$ 17.50 per 100

Sunnybrook (18), A.M. Haarlem. One of the finest John Evelyn seedlings, white perianth with a large beautifully frilled cup of sun-proof soft orange, a superb variety for the garden.

\$ 2.45 per doz.; \$ 16.50 per 100



Amateur

DIVISION IIC - LARGE-CUPPED

White or Whitish Perianth with Corona not paler than the Perianth

Aprilis (12), A.M. Haarlem 1944, a fine variety of uniform silvery-white throughout, lovely pointed perianth and short nicely frilled cup. A most elegantly formed variety for the rock-garden because of its dwarf growth. \$ 3.05 per doz.; \$ 21.00 per 100

Dunlewey (17), A.M. (e.g.) R.H.S., a fine large flower of perfect form and quality, broad smooth pure white perianth with large creamy cup, rather short in stem but its amazing freedom to bloom makes it a splendid garden plant. 35 cts each; \$ 3.50 per doz.

Ice Follies (16), a variety of great beauty and purity, circular white perianth of lovely smooth texture and flat saucer shaped white crown, a most serene flower and extremely beautiful cut-flower for decorative purposes. 75 cts each; \$ 7.50 per doz.

Jules Verne (22), A.M. Haarlem 1949, a very large and exquisite variety of superb quality, finish substance and texture, very broad well overlapping pure white perianth with large neatly flanged trumpet-shaped white cup with a pleasing soft creamy-yellow band, a real outstanding variety as a show-flower and for the garden. \$ 3.05 per doz.; \$ 21.00 per 100

White Nile (16), A.M. Haarlem R.H.S., an immense flower of remarkable beauty and boldness, broad pure white perianth and large creamy-white crown well-expanded at mouth, strong grower. \$ 2.55 per doz.; \$ 17.50 per 100

Division III - Small-Cupped Narcissi

(Comprising the former Barrii and Small-cupped Leedsii)

Distinguishing characters: One flower to a stem; Cup or Corona not more than one-third the length of the perianth segments.

DIVISION IIIA - SMALL-CUPPED

Yellow, Lemon or Pale Primrose Perianth with yellow or red-stained cups

Edward Buxton (20), A.M. Haarlem, a fine flower with soft yellow perianth as flat and round as a large coin, the shapely cup is soft orange with a distinct sunproof red margin, strong and tall grower, excellent for pot-culture (see illustration page 58). \$ 2.00 per doz.; \$ 13.50 per 100

Rapallo (19), A.M. Haarlem, very attractive flower of fine quality, smooth deep lemon yellow perianth and much expanding flat crown with a sharply defined red band at margin, a very fine show-flower. 75 cts each; \$ 7.50 per doz.

DIVISION IIIB - SMALL-CUPPED

White or Whitish Perianth with yellow, pink or red-stained cups

Amateur (17), A.M. Haarlem 1943, a splendid flower with immense thick very broad snow-white perianth and a flat expanding orange crown, the perfect balance of the flower makes it a very attractive, strong grower, plant in shaded position (see illustration page 61). \$ 2.85 per doz.; \$ 19.50 per 100

Firetail (19), F.C.C. (e) A.M. R.H.S., an attractive flower of Poeticus form with broad creamy-white perianth and a large bright crimson-scarlet cup, flowers are of great substance, strongly recommended. \$ 2.20 per doz.; \$ 15.00 per 100

Glen Fire (19), A.M. Haarlem, large well-formed flower with pure white perianth and a vivid orange crown, lasting qualities and lovely for garden and show purposes. \$ 2.20 per doz.; \$ 15.00 per 100

Hardy (18), A.M. Haarlem, 1942, a very unique and really attractive flower with flat smooth much overlapping creamy-white perianth of splendid quality and heavy durable texture, the orange-red crown is semi-double and heavily frilled. \$ 2.55 per doz.; \$ 17.50 per 100

Johannesburg (19), A.M. Haarlem, a most attractive flower with pure white perianth and deep orange, half double, beautifully frilled cup, most lovely cut-flower. \$ 3.05 per doz.; \$ 21.00 per 100

Kansas (19), a large and most striking flower, perfect in balance and quality, having immense overlapping smooth white perianth and nicely proportioned handsome flat lemon-yellow crown with narrow cinnamon coloured edge which does not fade, fine show-flower. \$ 2.75 per doz.; \$ 18.50 per 100

La Beauté (18), A.M. Haarlem, a lovely flower with well rounded ivory-white perianth and a striking deep orange-scarlet cup, rather late flowering. \$ 2.20 per doz.; \$ 15.00 per 100

Lady Kesteven (17), A.M. Haarlem, one of the most outstanding flowers in this section, the pure white perianth is of most unusual texture, while the eye is a beautiful cherry-red, strongly recommended for exhibition. Plant in a shaded position. \$ 2.35 per doz.; \$ 16.00 per 100

- LA RIANTE** (16), A.M. Haarlem, broad pure white perianth and flat crown of a brilliant crimson-scarlet of unique colouring and excellent poise, this exquisite flower of perfect form stands out as one of the finest red and white, excellent for growing in bowls, a good forcer and lovely in the garden.
\$ 2.00 per doz.; \$ 13.50 per 100
- Love Dream** (16), A.M. Haarlem, an enchanting flower of thick smooth texture with a rounded pure white perianth and a flattened intense orange-red cup.
\$ 2.30 per doz.; \$ 15.50 per 100
- Mary Housley** (20), pure white well overlapping perianth with lemon-yellow crown prettily edged soft orange, an exquisite garden and show-flower but also excellent for early forcing.
75 cts each; \$ 7.50 per doz.
- Polar Ice** (16), A.M. Haarlem, a very charming flower, snow-white perianth with a very small flat white crown shaded emerald-green in centre, ideal as a cut-flower, attracted much attention at our exhibit at the R.H.S. Daffodil Show 1957, late flowering.
\$ 2.55 per doz.; \$ 17.50 per 100
- Pomona** (17), A.M. Haarlem, lovely flower with broad much overlapping snow-white perianth of solid texture, flat citron-yellow cup flushed apricot and small orange rim, when flower is fully open the cup changes from apricot to green while the orange rim deepens and gives it a distinguished appearance.
\$ 2.35 per doz.; \$ 16.00 per 100
- Rideau Hall** (19), F.C.C. Haarlem, a beautifully formed flower of perfect shape, pure white overlapping perianth prettily frilled orange cup edged red, very attractive cut-flower.
40 cts each; \$ 4.00 per doz.
- Verger** (16), A.M. E.F.A. Haarlem, a charming flower with pure white perianth and a striking deep red crown, has the appearance of a large Poeticus, for early forcing (see illustration page 58).
\$ 2.05 per doz.; \$ 14.00 per 100

Division IV - Double Narcissi

Distinguishing characters: Double flowers

- albus plenus odoratus (Double white Poeticus)** (16), a late flowering snow-white variety of great charm, a good variety for naturalizing in grass and much praised as a cut-flower; in cold districts it does not flower freely, not suitable for forcing. Officially Div. X. \$ 2.20 per doz.; \$ 15.00 per 100
- Camellia** (16), a very beautiful and much refined flower doing justice to its name, colour a pleasing soft primrose-yellow throughout, the flowers are held on tall strong stems, vigorous grower.
80 cts each; \$ 8.00 per doz.
- Indian Chief** (20), A.M. Haarlem, a full double large flower of sulphur yellow intermingled with deep orange segments, carried on a strong stem well above the foliage, an early flowering variety and strong garden plant.
\$ 2.05 per doz.; \$ 14.00 per 100
- Inglescombe** (16), A.M. (c.m.) R.H.S., an exquisite, beautiful flower of very fine quality and form, one of the best doubles of this section, producing a large flower of a uniform primrose colour, a vigorous grower and much praised for cutting.
\$ 1.90 per doz.; \$ 13.00 per 100
- Irene Copeland** (14), A.M. (g) R.H.S., white with creamy-white segments and a golden ray down centre. Every Fancier and Collector of Narcissi should have this splendid variety in his collection, a perfect cut-flower and very valuable for forcing purposes.
\$ 2.35 per doz.; \$ 16.00 per 100
- Mary Copeland** (14), F.C.C. (e.g.) R.H.S., one of the most striking flowers of this section; of exquisite beauty with the long petals of creamy-white and centre interspersed lemon and brilliant orange-red, a most delightful variety, suitable for late forcing (see illustration page 67).
\$ 2.35 per doz.; \$ 16.00 per 100
- Mrs. William Copeland** (14), F.C.C. (e.g.) R.H.S., this lovely large well shaped and good double flower is white interspersed creamy-yellow.
\$ 2.55 per doz.; \$ 17.50 per 100
- telamonius plenus (Van Sion, The Double Trumpet Daffodil)** (16), unsurpassable for naturalizing purposes and it is also very valuable for early forcing, very showy variety. Officially classified under Division X.
\$ 2.15 per doz.; \$ 14.50 per 100
- TEXAS** (20), F.C.F.A. A.M. Haarlem, magnificent large full double flower of perfect form, yellow intermixed with orange-scarlet, the large and heavy flowers are carried on upright stems, fine for forcing (see illustration page 67).
\$ 2.05 per doz.; \$ 14.00 per 100
- Twink** (20), A.M. Haarlem, charming flower of a pale primrose flushed white with centre deep orange-red, a fine exhibition variety as well as a lovely garden plant.
\$ 2.05 per doz.; \$ 14.00 per 100
- Valencia** (18), F.C.C. Haarlem, a lovely full double flower of immense size carried on a tall upright stem, a pretty combination of deep golden yellow intermixed with orange-scarlet, we personally admire it and believe it deserves much more popularity.
\$ 2.30 per doz.; \$ 15.50 per 100

Division V - *Triandrus Narcissi*

Distinguishing characters: Characteristics of *Narcissus triandrus* clearly evident

- Moonshine** (13), A.M. Haarlem, an attractive and dainty *Triandrus* hybrid, producing creamy white star-shaped flowers in clusters of 2 and 3, much recommended. \$ 2.05 per doz.; \$ 14.00 per 100
- Niveth** (17), H. C. Wisley, a *Triandrus* hybrid of the greatest beauty and more vigour than is usual in this class, purest stainless white of perfect grace and quality. 40 cts each; \$ 4.00 per doz.
- Rippling Waters** (15), F.C.C. (g) R.H.S., a very delicate variety in this section, producing three to four, slightly reflexing, icy-white flowers on a slender but strong stem, a lovely addition for the rock-garden and extremely fine cut-flowers. 90 cts each; \$ 9.00 per doz.
- Shot Silk** (15), A.M. Haarlem, the most graceful *Triandrus* in this class, appealing and enchanting, both perianth and cup of the slightly star-shaped blossoms are of a clear uniform creamy-white throughout, extremely beautiful for choice spots in the rock-garden. \$ 2.50 per doz.; \$ 17.00 per 100
- SILVER CHIMES** (12), F.C.C. Haarlem 1953, a remarkable variety of great beauty and richness, having stiff dark olive-green foliage and a strong stem carrying nine or more beautifully, small formed hanging flowers with glistening white perianth and creamy-lemon cups, a good garden plant also looking particularly fresh and rich when used as a cut-flower and very lovely to grow in pots in a cold room or greenhouse. Late flowering. \$ 3.05 per doz.; \$ 21.00 per 100
- THALIA** (16), A.M. Haarlem, a very lovely hybrid of *Narcissus triandrus albus*, often called the Orchid-flowered Daffodil, produces beautiful pure white flowers which are carried 2 to 4 on a stem and is most attractive for either rock-garden or indoor decoration, late flowering (see illustration page 67). \$ 2.35 per doz.; \$ 16.00 per 100
- Tresamble** (14), F.C.C. Haarlem 1950, May-flowering, most charming *Triandrus* hybrid with four to six sparkling large white flowers on a stem, free flowering, which makes it particularly attractive in the rock-garden. \$ 2.55 per doz.; \$ 17.50 per 100
- triandrus albus**, see miniature Daffodils and various species page 70.

Division VI - *Cyclamineus Narcissi*

- Beryl** (8), A.M. (g) R.H.S. and Haarlem, a very charming graceful drooping flower, slightly reflexing pale-primrose perianth with small globular yellow cup ribbon edged brick red. \$ 1.95 per doz.; \$ 13.50 per 100
- cyclamineus** (6), F.C.C. R.H.S. 1887, the earliest to flower and one of the choicest species, rich yellow trumpet with reflexing Cyclamen-like perianth, grows a tiny bulb (collected bulbs offered). \$ 1.35 per doz.; \$ 9.50 per 100
- February Gold** (15), a lovely golden-yellow flower after the style of a Cyclamen, exquisitely formed bold trumpet and very much reflexed petals, a refined variety, also good for indoor culture, very early flowering and long lasting (see illustration page 65). \$ 2.45 per doz.; \$ 16.50 per 100
- Garden Princess** (14), a fine hybrid of this interesting section, being of a uniform deep golden yellow throughout, slightly reflexing petals and prettily frilled trumpet. \$ 1.90 per doz.; \$ 13.00 per 100
- Golden Lacquer** (16), a very early flowering hybrid of deep golden-yellow throughout with a large expanding serrated trumpet and slightly reflexed petals, for early forcing. \$ 2.05 per doz.; \$ 14.00 per 100
- Little Witch** (6), a dainty golden yellow flower of a most attractive form with slightly reflexing petals and small trumpet-shaped cup somewhat narrow at the mouth, a lovely hybrid for the rockery. 70 cts each; \$ 7.00 per doz.
- March Sunshine** (9), a very pretty cyclamineus hybrid and one of the first to bloom in March, a rich yellow tube-like cup with starry formed slightly reflexing yellow petals, very free flowering, fine for pots, also a treasure for the rockery, very early flowering. \$ 2.25 per doz.; \$ 15.50 per 100
- PEEPING TOM** (14), a very outstanding and attractive cyclamineus-hybrid of recent introduction, remarkable on account of its deep golden yellow long trumpet and reflexed petals. A real beauty for the rockery with much lasting qualities, very early flowering. \$ 3.05 per doz.; \$ 21.00 per 100

Division VII - Jonquilla Narcissi

Distinguishing characters: Characteristics of any of the Narcissus Jonquilla group clearly evident

campernelli odorus plenus (13), A.M. R.H.S., beautiful double yellow flowers of elegant form, may be forced gently, very lovely variety and strongly recommended. \$ 1.00 per doz.; \$ 7.00 per 100

campernelli odorus rugulosus (13), rich deep yellow flowers, broad imbricated perianth with straight wrinkled cup, excellent for forcing or bedding, very charming. 85 cts per doz.; \$ 6.00 per 100

campernelli Orange Queen (10), A.M. Haarlem, a lovely variety with 3 or 4 deliciously scented flowers of very deep golden-orange on a stem, splendid forcer. \$ 1.20 per doz.; \$ 8.50 per 100

Chérie, see under New Rare Daffodils page 42.

Golden Goblet (15), A.M. (e) R.H.S., rich golden-yellow, like a Trumpet in size but with the perfume of the Jonquilla Hybrids, a variety of a very strong constitution and an ideal garden plant. \$ 3.05 per doz.; \$ 21.00 per 100

GOLDEN PERFECTION (22), F.C.C. A.M. (g), one of the largest Jonquilla, 2 or 3 very large flowers on a stem, the overlapping perianth and well proportioned cup are clear yellow, very strong and robust plant. \$ 1.85 per doz.; \$ 12.50 per 100

gracilis (14), light sulphur-yellow flowers from which 3 to 5 on one spike, a dainty and charming looking Jonquil, sweetly scented and one of the last Narcissi to bloom. A valuable species for the rock-garden. \$ 2.15 per doz.; \$ 15.00 per 100

jonquilla Single (10), (**The Single Sweet Scented Jonquilla**), dainty heads of small rich golden yellow flowers, much praised for their delicious scent, may be forced gently, very valuable for cutting. 70 cts per doz.; \$ 5.00 per 100

jonquilla flore pleno (10), (**The Double Sweet Scented Jonquilla**), rich yellow graceful double fragrant flowers, very attractive variety. \$ 1.80 per doz.; \$ 12.50 per 100

LANARTH (20), F.C.C. (eg) R.H.S., a beautiful and unique variety of unusual colouring, medium sized flower with bright golden-yellow flat perianth, crown flushed with old-gold. \$ 1.55 per doz.; \$ 10.50 per 100

Topaz (16), a beautiful introduction of free flowering habit, can best be described as a giant white Jonquilla with large primrose-yellow cup, the fragrant flowers are held on tall stems, a valuable addition to this section, very long lasting. \$ 1.80 per doz.; \$ 12.00 per 100

Trevithian (13), F.C.C. (m.g.), F.A., a very beautiful variety having 2 or 3 flowers of uniform shade of pale lemon-yellow on a stem, broad overlapping smooth perianth and medium-sized shallow crown. A strong grower, recommended for gentle forcing in bowls (see illustration page 67). \$ 1.80 per doz.; \$ 12.00 per 100



cyclamineus February Gold

Division VIII - Tazetta Narcissi

(Comprising the former Poetaz Narcissi Bunch-flowered Group)

Distinguishing characters: Characteristics of any of the Narcissus Tazetta group clearly evident.

Cheerfulness (Double) (19), F.C.C. (g e), a double form of Elvira, creamy-white perianth with a full double centre of pale yellow and of extreme sweetness, very distinct and decorative, strong grower. Officially classified under Division IV, suitable for late forcing.

\$ 1.85 per doz.; \$ 12.50 per 100

Cragford (14), F.C.C. F.C.E.F.A. Haarlem, of great beauty and value on account of its extreme earliness and its easy response to forcing, strong pure white perianth of excellent form with a brilliant scarlet cup, can successfully be grown in pebbles in water like Paperwhite Narcissus to bloom after Christmas. Its perfume is delicious (see illustration).

\$ 2.35 per doz.; \$ 16.00 per 100

Early Splendour (18), pure white perianth with deep orange cup, producing a large flowerhead of 6 to 8 flowers on each stem, very effective garden variety and vigorous grower.

\$ 2.05 per doz.; \$ 14.00 per 100

Fairness (Double) (19), a splendid double form of Admiration with several double flowers, pale yellow interspersed orange and scarlet, very decorative (officially Div. IV).

\$ 2.20 per doz.; \$ 15.00 per 100

GERANIUM (16), F.C.C. (g) R.H.S., a Poetaz-Hybrid of great beauty, bearing on strong stems heads of 4 to 6 flowers with broad pure white petals of solid substance and a bright orange-scarlet cup, a very effective late flowering variety much recommended for the border, sturdy grower, fine for pots and for forcing from the middle of February, late flowering variety.

\$ 1.80 per doz.; \$ 12.00 per 100

Halvose (16), suffused orange-yellow perianth with bright red cup, a very interesting variety because of its very remarkable colouring and rich flowering habit, easy forcer.

\$ 2.05 per doz.; \$ 14.00 per 100

Laurens Koster (22), bearing on tall gracefull stems heads of 5 to 6 large flowers with solid rounded perianth and pale yellow cup, one of the best for forcing.

\$ 2.05 per doz.; \$ 14.00 per 100



Cragford

L'Innocence (15), pure white perianth with a deep yellow eye, having 4 to 6 flowers on each stem, blooms freely and may be grown in water and pebbles, very dependable.

\$ 2.20 per doz.; \$ 15.00 per 100

Martha Washington (20), A.M. (g) R.H.S., an outstanding and beautiful variety with substantial flowers as large as a 'Barrii', broad snow-white overlapping perianth with a well proportioned orange cup, having two or three flowers on a stem.

\$ 2.55 per doz.; \$ 17.50 per 100

Scarlet Gem (15), F.C.C. (e.g.) F.A., one of the best bunch-flowered Narcissi, it is a very showy free flowering variety with primrose-yellow perianth and brilliant orange-scarlet cup, fine forcer.

\$ 2.05 per doz.; \$ 14.00 per 100

St. Agnes (16), F.C.C. Haarlem A.M. (e.g.m.) R.H.S., this lovely variety deserves wide popularity to do justice to its beauty and attractiveness, a very beautiful Poetaz, large pure white perianth and expanded eye of brilliant deep solid red, a splendid garden and forcing variety.

\$ 1.85 per doz.; \$ 12.50 per 100

Yellow Cheerfulness (19), remarkable fine yellow coloured sport from the well-known Cheerfulness with all its pleasing characteristics, a most lovely flower of delicate colour, extremely useful for decorative purposes and also a vigorous garden plant.

\$ 2.35 per doz.; \$ 16.00 per 100



Double Narcissus Mary Copeland
\$ 2.35 per doz.; \$ 16.00 per 100
See page 63



Double Narcissus Texas
\$ 2.05 per doz.; \$ 14.00 per 100
See page 63



Jonquilla Narcissus Trevithian
\$ 1.80 per doz.; \$ 12.00 per 100
See page 65



Triandrus Narcissus Thalia
\$ 2.35 per doz.; \$ 16.00 per 100
See page 64

Division IX - Poeticus Narcissi

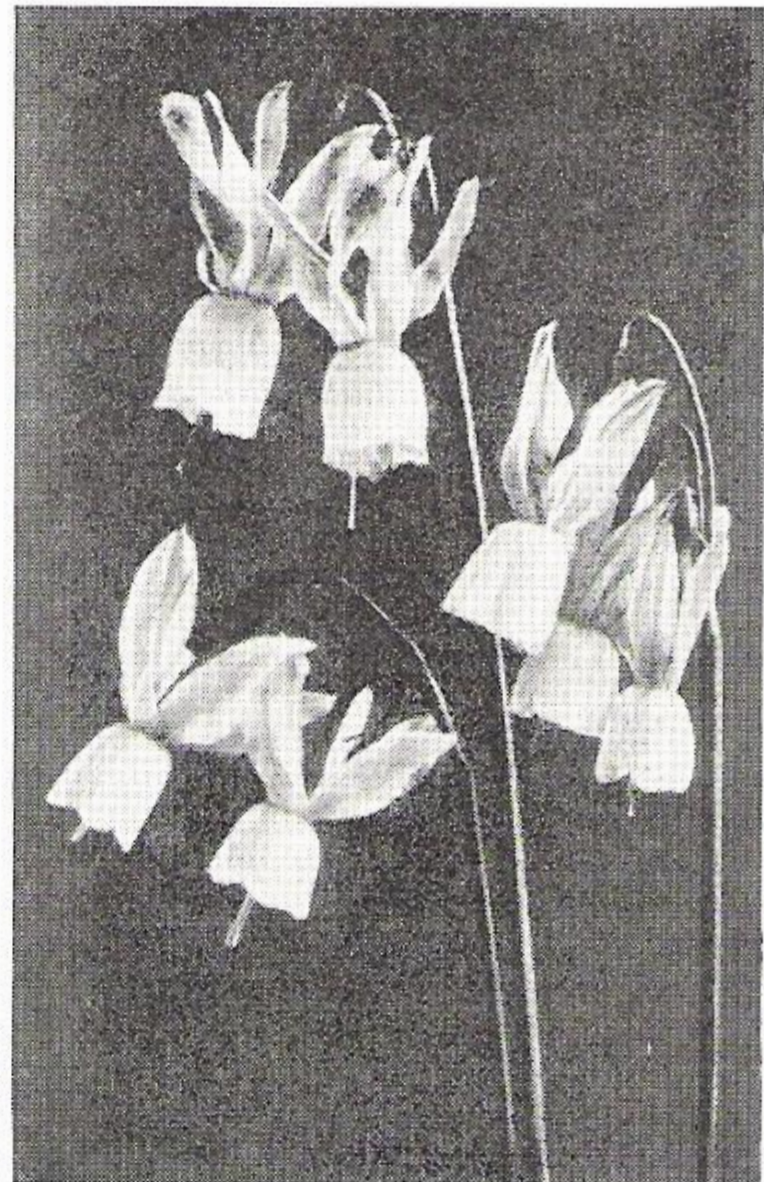
Distinguishing characters:

Characteristics of the Narcissus Poeticus group without admixture of any other.

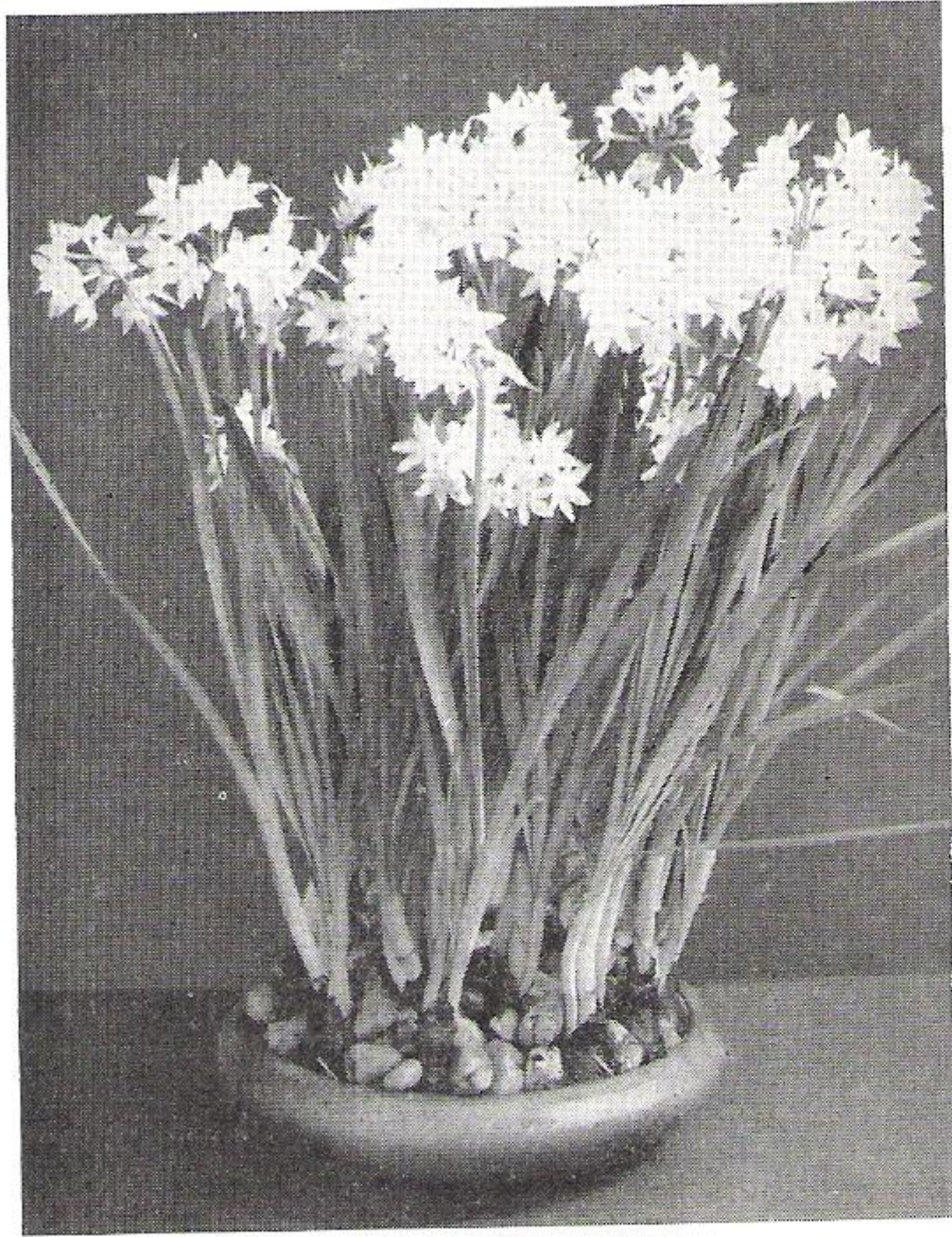
- Actaea** (17), F.C.C. Haarlem, one of the largest Poeticus in existence, broad snow-white perianth of great substance and good form, the very large eye is broadly margined with dark red, vigorous grower and late flowering variety. \$ 1.75 per doz.; \$ 12.00 per 100
- Margaret Mitchell** (17), F.C.C. Haarlem 1947, a brilliant flower with broad pure white overlapping perianth soft yellow eye beautifully margined with red. \$ 3.00 per doz.; \$ 21.00 per 100
- Queen of Narcissi** (20), A.M. Haarlem, pure white well formed Poeticus of fine texture and substance with striking bright yellow eye edged bright red producing an abundance of sweetly scented flowers (officially classified under Division IIIb). 40 cts each; \$ 4.00 per doz.
- Recurvus (Old Pheasant Eye)** (17), pure white perianth with deep red eye, must not be forced, a most valuable variety for cutting and naturalizing, very late. \$ 1.35 per doz.; \$ 9.50 per 100

Miniature Narcissi and various Species

- bulbocodium citrinus**, one of the finest varieties of this section, producing lovely, soft lemon-yellow flowers of dainty habit, a gem for the rock-garden, height 6 to 8 in. \$ 1.60 per doz.; \$ 11.00 per 100
- bulbocodium conspicuus (Yellow Hoop Petticoat)** (6), dainty little golden-yellow flowers with rush-like foliage. 85 cts per doz.; \$ 6.00 per 100
- bulbocodium monophyllum** (6), an exquisite snow-white version of the Hoop-Petticoat, dainty dwarf species from Algeria, perfectly hardy. \$ 3.00 per doz.; \$ 21.00 per 100
- bulbocodium obesus** (5), a very lovely clear yellow little species with creeping foliage, attractive for the rock-garden. \$ 1.00 per doz.; \$ 7.00 per 100
- canaliculatus** (6), is like miniature Polyanthus Narcissus Grand Monarque, several tiny flowers on a dwarf stem, white with yellow cups, very suitable for the rock-garden. Sicily. \$ 1.10 per doz.; \$ 7.50 per 100
- cyclamineus**, see under Division VI.
- juncifolius (The Miniature Rock-Leaved Daffodil)** (5), producing dainty little flowers of a rich golden yellow colour, a splendid little thing for the rock-garden. \$ 1.20 per doz.; \$ 8.50 per 100
- lobularis (Lent Lily)** (8), a pretty miniature Daffodil, perianth sulphur-yellow, trumpet yellow, a gem for the rock-garden, the earliest of all Narcissi. \$ 1.10 per doz.; \$ 7.50 per 100
- minimus** (3), the smallest and dwarfest of all Trumpet daffodils, producing outdoors in February dainty little trumpet flowers of elegant form, rich full yellow, it may be naturalized in rockeries or in grass. \$ 1.50 per doz.; \$ 10.50 per 100
- pseudo N. obvallaris (Tenby Daffodil)** (9), very early, smart bright golden yellow medium sized flowers, built on stiff stems, very good in grass. May also be grown in pots. \$ 1.20 per doz.; \$ 8.50 per 100



triandrus albus



Paperwhite Grandiflora

Rosy Trumpet (12), a pretty flower and an attractive beauty especially for the rock-garden, where the white perianth and refined apricot pink trumpet will come to full advantage.

\$ 1.80 per doz.; \$ 12.50 per 100

triandrus albus (7), (**The Angel's Tears Daffodil**), an exquisite little species, greatly admired in the rock-garden, it is of a slender growth and produces a cluster of elegant little creamy white flowers with globular cup and perianth reflexing like a Cyclamen (see illustration page 69).

90 cts per doz.; \$ 6.00 per 100

triandrus concolor (8), bright golden yellow form, very attractive.

\$ 1.70 per doz.; \$ 12.00 per 100

watieri (4), A.M. (a) R.H.S., an exquisite dainty little pure white flat flower of crystalline texture, very suitable for growing in pots or pans in a cool greenhouse or for planting in the rock-garden, very fascinating. \$ 2.50 per doz.; \$ 17.50 per 100

W.P. Milner (12), A.M. (r) R.H.S., a very charming dainty and sulphur-white coloured flower of trumpet form, is one of the best for growing in fibre, a batch in the rock-garden or in the border is something worth having, profuse bloomer early flowering. \$ 2.15 per doz.; \$ 15.00 per 100

PAPERWHITES

(For indoor only)

Paperwhite Grandiflora, early snowy-white scented flowers, very valuable for early forcing only, the only bulbs that may be placed direct in the window after planting. \$ 1.65 per doz.; \$ 11.00 per 100

Grand Soleil d'Or, very much like Paperwhite in habit, colour deep yellow with bright orange cup very showy and recommended for forcing only. \$ 2.85 per doz.; \$ 19.75 per 100

Hyacinths

The best hand-picked quality, choice bulbs selected from healthy stocks, adapted for Bowls, Pots, Glasses and for Exhibition. We include only valuable varieties in our Collections.

CULTURE IN POTS

Hyacinths should be potted early in September for Christmas flowering and every fortnight thereafter for succession. Plunge pots in the coolest place of the garden, or place in a dark, cool cellar.

After three or four months, remove to the forcing house as required, but care should always be taken that the bulbs are well rooted and the buds well out of the neck of the bulbs before beginning to force, as successful cultivation depends almost completely on these points. To keep the foliage dwarf and to assist the perfect colouring of the flowers, they should have occasionally a supply of liquid manure during the growing period. Always use clean old pots.

HYACINTHS ON GLASSES

This old-fashioned way is in favour again now that the proper glasses are on the market.

Fill the glass with water (rainwater preferred) almost to touch the base of the bulbs. A few pieces of charcoal should be put in the glass, as this keeps the water clean. The next procedure is the simple one of placing the glasses in any dark cool room, cellar or cupboard until the sprouts are about 3 inches high, then they may be brought gradually to the full light. Although this system of culture is very simple, it is of first importance that the largest size bulbs are obtained.

OUTDOOR CULTURE

For successful cultivation in the open air, Hyacinths may be planted any time from September to December. September and October are the best months; they like a light rich soil, the ground should be well drained. Plant the bulbs at equal distances apart in circles or in straight lines and about 5 inches deep. Never plant the bulbs when the ground is wet. They require a little covering of straw or a thin layer of leaves during the winter to protect them from frost.