

Images 651-678. Pigeons and doves

651. Coccidial oocysts from woodpigeon. Different sizes. woodpigeon6.jpg
- 652a & 652b. Coccidial oocysts from woodpigeon. Different sizes. Woodpigeon2.jpg and Woodpigeon5.jp
- 653a-c. Coccidial oocysts from feral pigeon. D9575.jpg, D9576.jpg and D9578.jpg
- 654 a-c. Coccidial oocysts from collared dove. cdove1.jpg, cdove2.jpg, cdove3.jpg
- 655 a-c. Coccidial oocysts from collared dove. cdove8.jpg, cdove9.jpg, cdove10.jpg
- 656 & 657. Hairworm eggs (ellipsoid, plug at both poles) inside female worm. From intestine of feral pigeon. D9562.jpg and D9563.jpg
- 658 a-c. Hairworm eggs from intestine of feral pigeon. D9571.jpg, D9580.jpg and D9583.jpg
- 659a & 659b. Hairworm eggs and coccidial oocysts from intestine of feral pigeon. D9581.jpg and D9582.jpg.
660. Hairworm egg (ellipsoid, plug at both poles) and coccidial oocyst from intestine of woodpigeon. woodpigeon7.jpg
- 661 & 662. Hairworm eggs (ellipsoid, plug at both poles) and coccidial oocysts from intestine of woodpigeon. woodpigeon8.jpg and woodpigeon9.jpg
663. *Ornithostrongylus quadriradiatus* in intestine of stock dove. Inflated cuticle at anterior end of worm. D8367.jpg
664. *Ornithostrongylus quadriradiatus* in intestine of stock dove. Inflated cuticle at anterior end of worm. D8373.jpg
665. *Ornithostrongylus quadriradiatus* in intestine of stock dove. Inflated cuticle at anterior end of worm. D8374.jpg
666. *Ornithostrongylus quadriradiatus* in intestine of stock dove. Male worm with bursal rays. D8378.jpg
667. *Ornithostrongylus quadriradiatus* in intestine of woodpigeon. Male worm with bursal rays and spicules. 4469.jpg
668. *Ornithostrongylus quadriradiatus* in intestine of stock dove. Eggs inside female worm. Eggs ellipsoid, thin-walled, granular contents. D8387.jpg

669. Infected elbow joint. Collared dove. No significant bacteria isolated. 6390.JPG

670. Infected elbow joint (opened). Collared dove. No significant bacteria isolated. 6392.JPG

671. Granuloma in feral pigeon, extending into crop. Initial damage due to trauma? D3440.jpg

672. Granuloma in feral pigeon. Feathers and scabs removed. Granuloma extending into crop. Initial damage due to trauma? D3444.jpg

673. Pedunculated chondrosarcoma on wing of feral pigeon. D4096.jpg

674. Pedunculated chondrosarcoma on wing of feral pigeon. D4098.jpg

675. Pedunculated chondrosarcoma on wing of feral pigeon. Cut-section. D4100.jpg

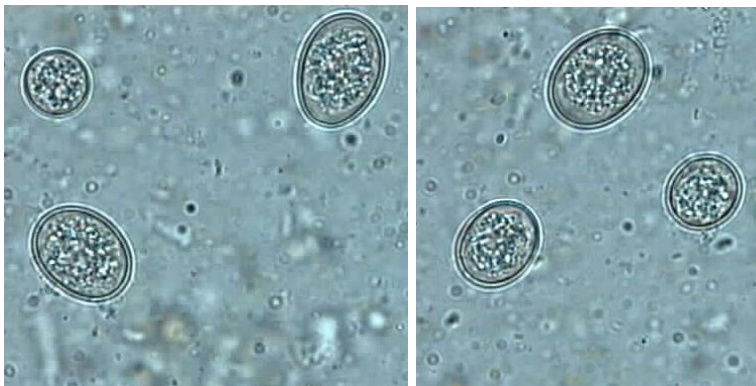
676. Adult woodpigeon. Shot. Thickened crop due to production of "crop milk". D5203.jpg

677. Adult woodpigeon. Shot. Thickened crop due to production of "crop milk". Unopened crop. D5205.jpg

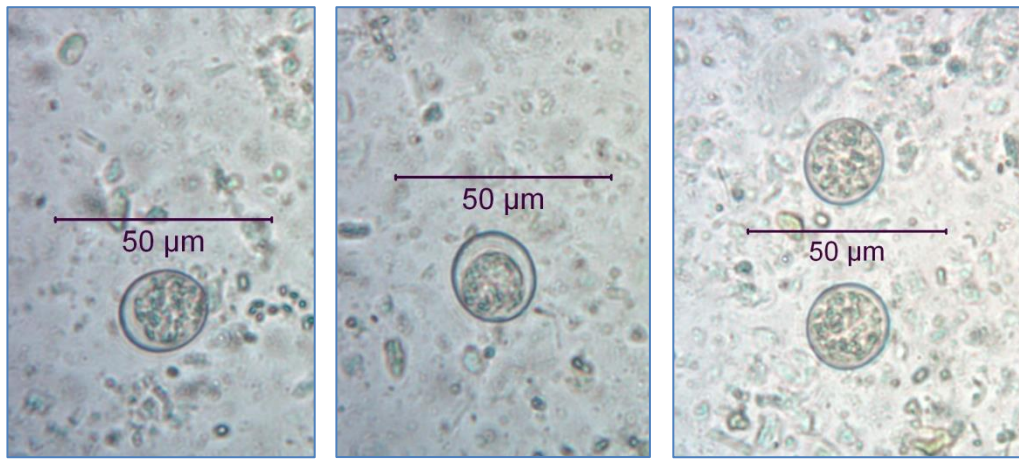
678. Adult woodpigeon. Shot. Thickened crop due to production of "crop milk". Opened crop. D5206.jpg



651. Coccidial oocysts from woodpigeon. Different sizes.
woodpigeon6.jpg



652a & 652b. Coccidial oocysts from woodpigeon. Different sizes.
Woodpigeon2.jpg and Woodpigeon5.jpg



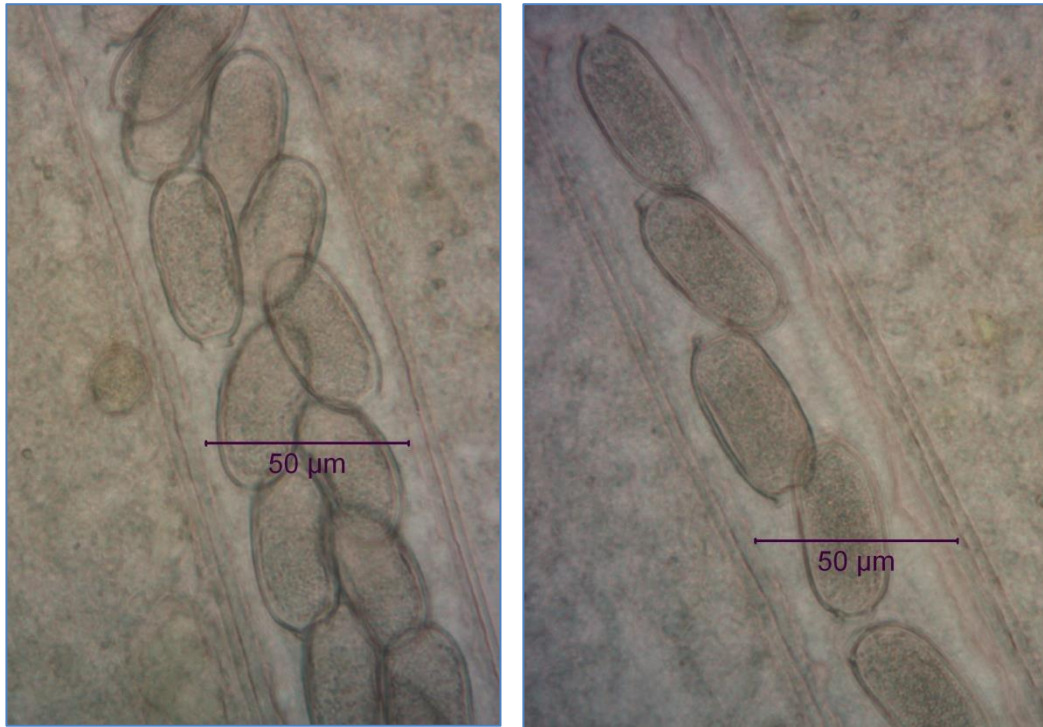
653a-c. Coccidial oocysts from feral pigeon. D9575.jpg, D9576.jpg and D9578.jpg



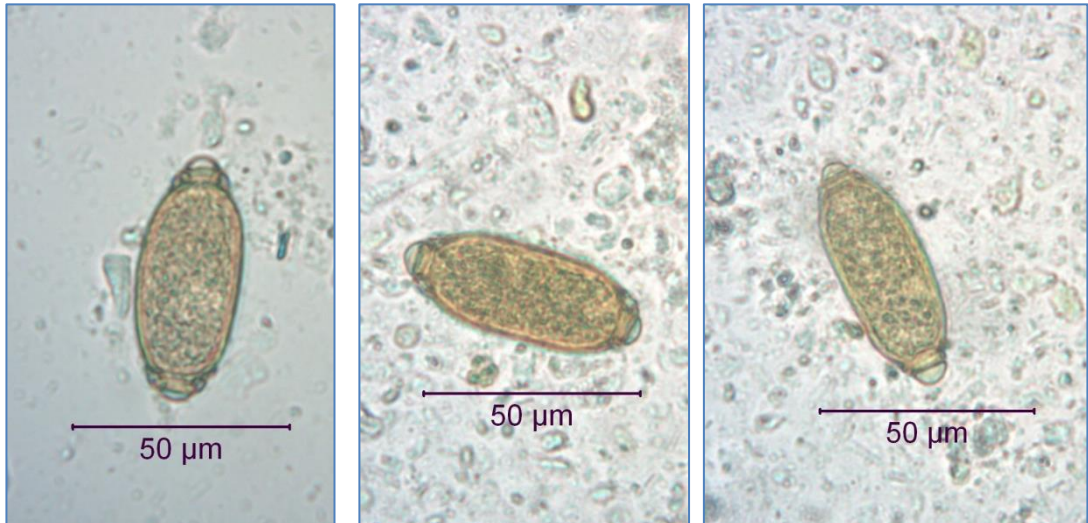
654 a-c. Coccidial oocysts from collared dove. cdove1.jpg, cdove2.jpg, cdove3.jpg



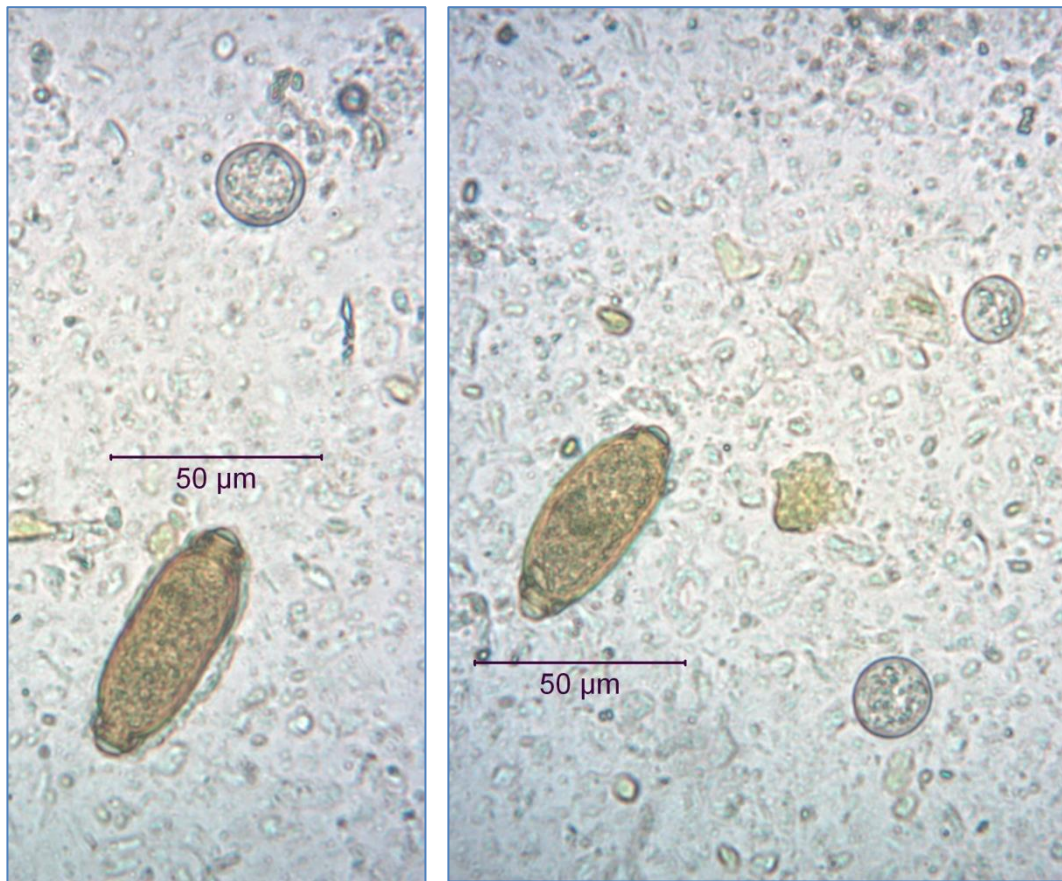
655 a-c. Coccidial oocysts from collared dove. cdove8.jpg, cdove9.jpg, cdove10.jpg



656 & 657. Hairworm eggs (ellipsoid, plug at both poles) inside female worm. From intestine of feral pigeon. D9562.jpg and D9563.jpg



658 a-c. Hairworm eggs from intestine of feral pigeon. D9571.jpg, D9580.jpg and D9583.jpg



659a & 659b. Hairworm eggs and coccidial oocysts from intestine of feral pigeon. D9581.jpg and D9582.jpg.



660. Hairworm egg (ellipsoid, plug at both poles) and coccidial oocyst from intestine of woodpigeon. woodpigeon7.jpg



661 & 662. Hairworm eggs (ellipsoid, plug at both poles) and coccidial oocysts from intestine of woodpigeon. woodpigeon8.jpg and woodpigeon9.jpg



663. *Ornithostrongylus quadriradiatus* in intestine of stock dove.
Inflated cuticle at anterior end of worm. D8367.jpg



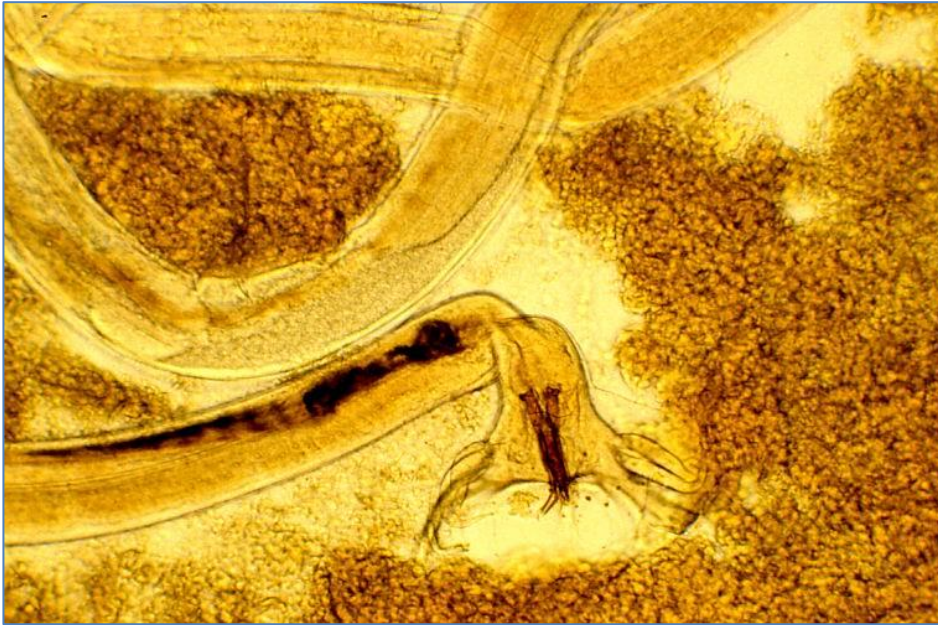
664. *Ornithostrongylus quadriradiatus* in intestine of stock dove.
Inflated cuticle at anterior end of worm. D8373.jpg



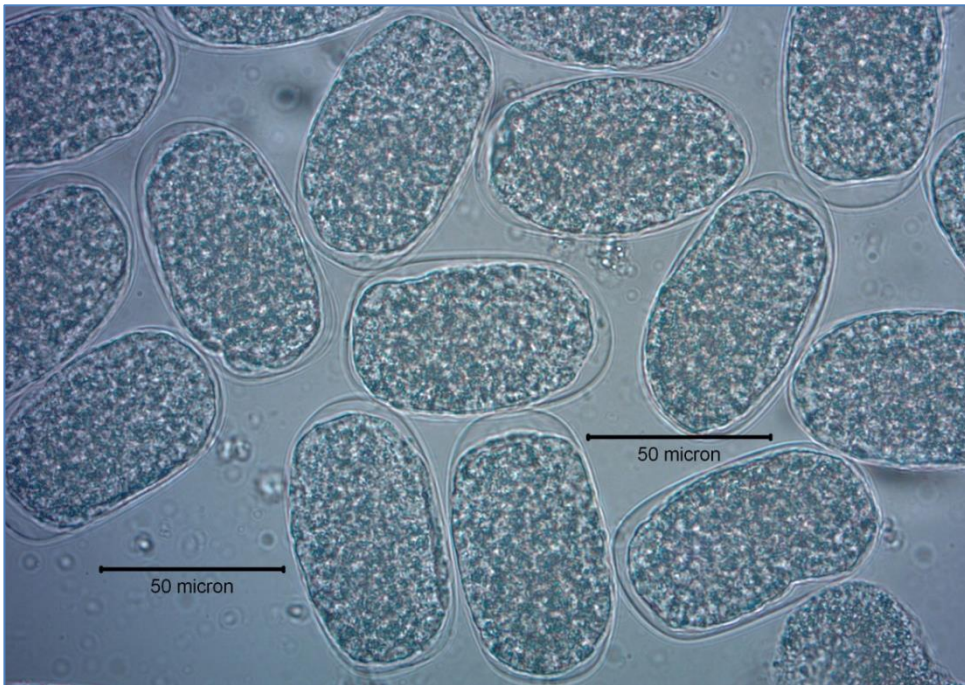
665. *Ornithostrongylus quadriradiatus* in intestine of stock dove. Inflated cuticle at anterior end of worm. D8374.jpg



666. *Ornithostrongylus quadriradiatus* in intestine of stock dove. Male worm with bursal rays. D8378.jpg



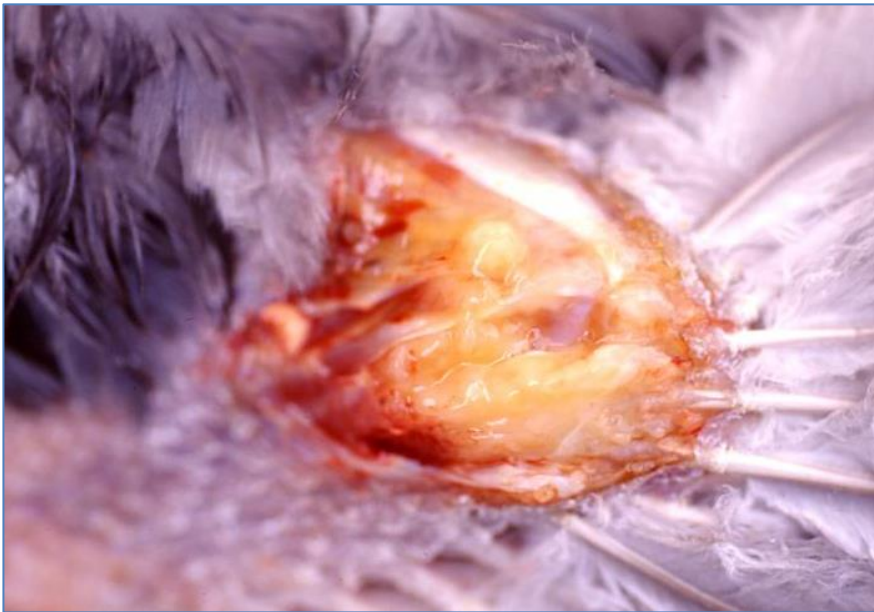
667. *Ornithostrongylus quadriradiatus* in intestine of woodpigeon. Male worm with bursal rays and spicules. 4469.jpg



668. *Ornithostrongylus quadriradiatus* in intestine of stock dove. Eggs inside female worm. Eggs ellipsoid, thin-walled, granular contents. D8387.jpg



669. Infected elbow joint. Collared dove. No significant bacteria isolated. 6390.JPG



670. Infected elbow joint (opened). Collared dove. No significant bacteria isolated. 6392.JPG



671. Granuloma in feral pigeon, extending into crop. Initial damage due to trauma? D3440.jpg



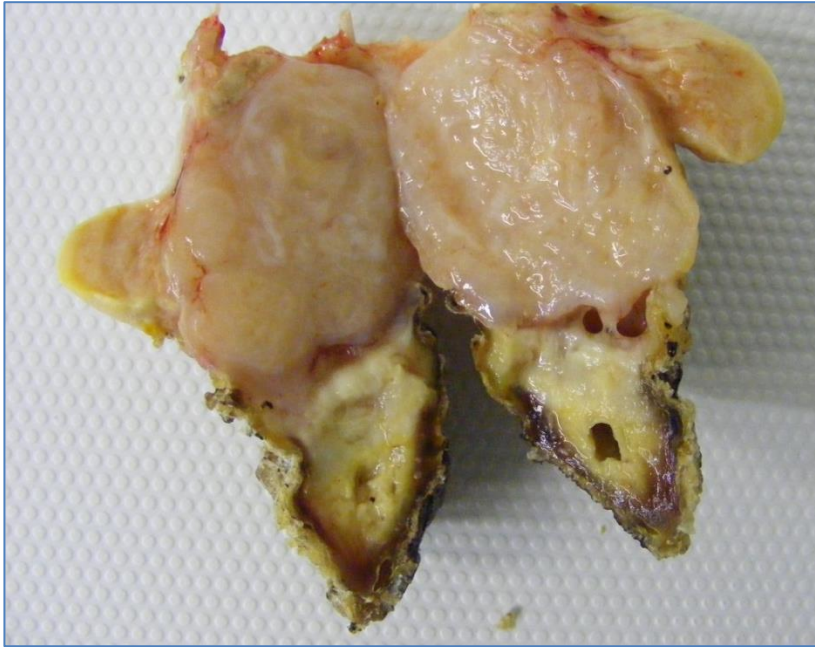
672. Granuloma in feral pigeon. Feathers and scabs removed. Granuloma extending into crop. Initial damage due to trauma? D3444.jpg



673. Pedunculated chondrosarcoma on wing of feral pigeon. D4096.jpg



674. Pedunculated chondrosarcoma on wing of feral pigeon. D4098.jpg



675. Pedunculated chondrosarcoma on wing of feral pigeon. Cut-section. D4100.jpg



676. Adult woodpigeon. Shot. Thickened crop due to production of "crop milk". D5203.jpg



677. Adult woodpigeon. Shot. Thickened crop due to production of "crop milk". Unopened crop. D5205.jpg



678. Adult woodpigeon. Shot. Thickened crop due to production of "crop milk". Opened crop. D5206.jpg