

PLATE IV.

(Drawings of Figs. 4 and 5, by Mr. J. H. Emerton; the rest by Prof. S. I. Smith.)

- FIG. 1.—*Eumamida picta*. (p. 44.) Extremity of the abdomen of a male, from station 1098, dorsal view, enlarged three and a half diameters.
- FIG. 2.—Extremity of the abdomen of a young male, from station 1152, enlarged four diameters.
- FIG. 3.—Peduncle of right antenna of a male, dorsal view, from station 1152, enlarged eight diameters; *a*, acicle, or articulated spine, of the second segment, representing the antennal scale; *b*, third segment, projecting anteriorly in a long spine.
- FIG. 3*a*.—The same, side view; *a*, as in last figure.
- FIG. 4.—*Eupagurus politus* Smith. (p. 27.) Lateral view of left side of a male, from station 922, natural size.
- FIG. 5.—*Catapagurus Sharreri* A. M.-Edwards. (p. 31.) Lateral view of left side of a male in a carinæcium, formed by *Adamsia sociabilis* Verrill; from station 940, enlarged two diameters.

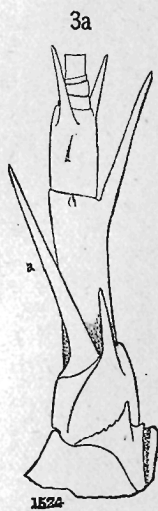
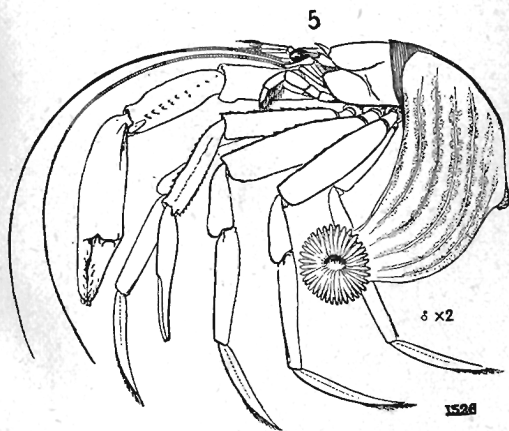
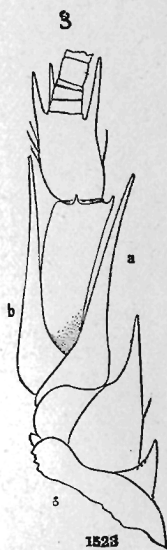
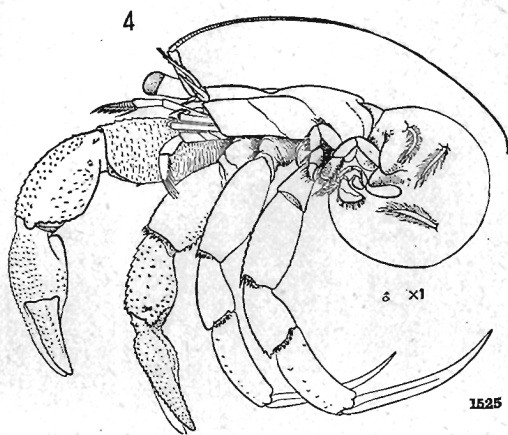
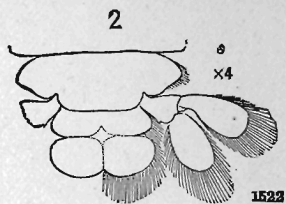
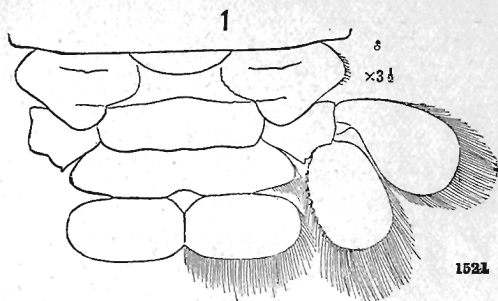


PLATE V.

(Drawings of Figs. 4, 4a, 4b, and 5, by Mr. J. H. Emerton; the rest by Prof. S. I. Smith.)

- FIG. 1.—*Eupagurus bernhardus* Brandt. (pp. 28, 29, *et seq.*) Outline of transverse section through the lower part of the anterior arthrobranchia of the thirteenth somite (penultimate thoracic), showing the form of the lamellæ; enlarged eight diameters; *a*, afferent, and *b*, efferent vessel.
- FIG. 2.—*Sympagurus pictus* Smith. (p. 37.) Outline of similar section of the corresponding branchia of a female, from station 924, enlarged eight diameters, and lettered as in the last figure.
- FIG. 2a.—Extremity of the same branchia, side view, enlarged eight diameters.
- FIG. 3.—*Parapagurus pilosimanus* Smith. (p. 33.) Outline of similar section of the corresponding branchia of a male, from station 880, enlarged eight diameters, and lettered as in Figs. 1 and 2.
- FIG. 3a.—Extremity of the same branchia, side view, enlarged eight diameters.
- FIG. 4.—*Parapagurus pilosimanus*. (p. 33.) Lateral view of the left side of the originally described male specimen, taken on a trawl-line off Nova Scotia, half natural size.
- FIG. 4a.—Dorsal view of the carapax and anterior appendages of the same specimen, natural size.
- FIG. 4b.—Dorsal view of the chelipeds of the same specimen, half natural size.
- FIG. 5.—Dorsal view of a male in the carcinoecium (*Epizoanthus paguriphilus* Verrill), from station 947, natural size.

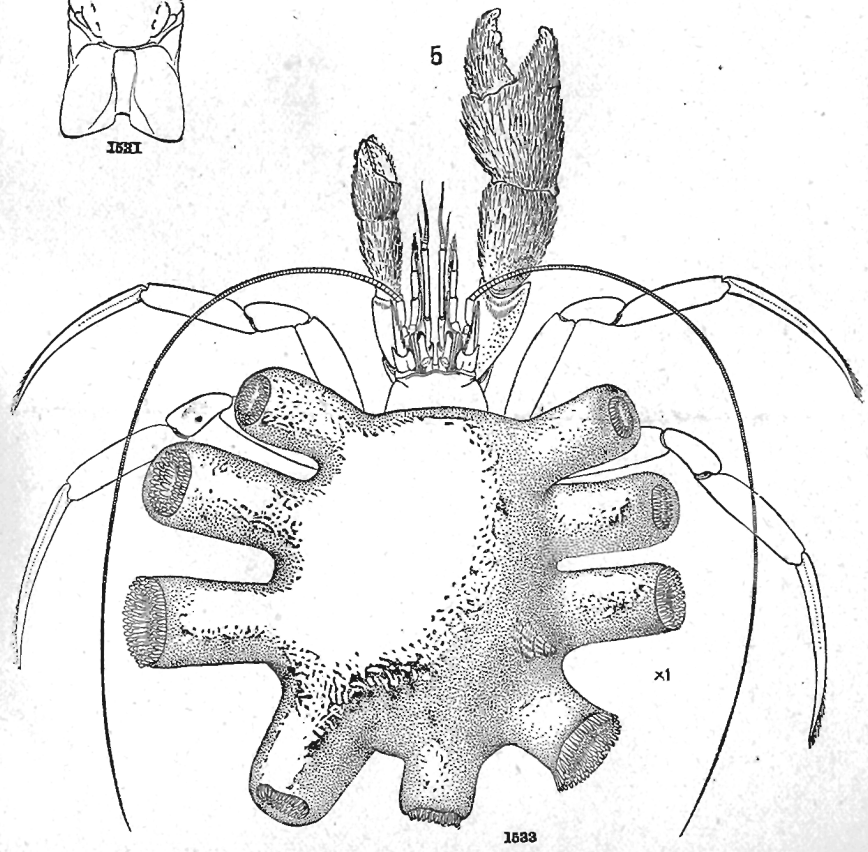
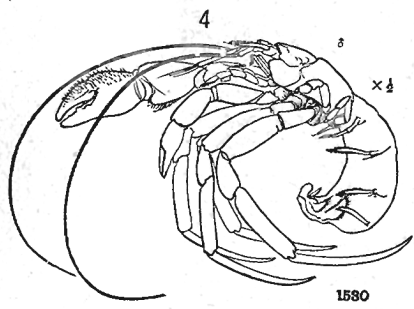
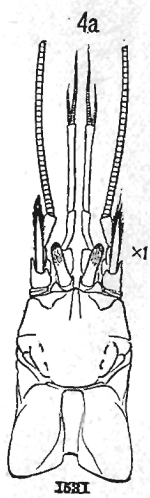
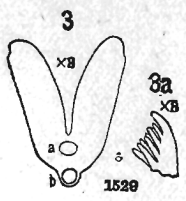
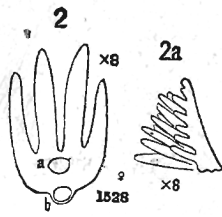
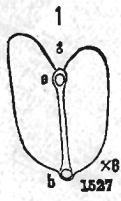


PLATE VI.

(Drawing of Fig. 5, by Mr. J. H. Emerton; the rest by Prof. S. I. Smith.)

- FIG. 1.—*Parapagurus pilosimanus*. (p. 33.) First maxilla of the right side, seen from below, of a male from station 880, enlarged six diameters.
- FIG. 2.—Second maxilla of the right side of the same specimen, enlarged six diameters.
- FIG. 3.—First maxilliped of the right side of the same specimen, enlarged six diameters.
- FIG. 4.—Appendage of the right side of the first somite of the abdomen of the same specimen, seen from behind, enlarged four diameters.
- FIG. 4a.—Appendage of the right side of the second somite of the abdomen of the same specimen, seen from behind, enlarged four diameters.
- FIG. 5.—*Sympagurus pictus*. (p. 37.) Dorsal view, from life, of a male in the carcinoecium (*Urticina consors* Verrill), from station 924, one-half natural size.
- FIG. 6.—First maxilla of the right side of a female, from station 1114, enlarged six diameters.
- FIG. 7.—Second maxilla of the right side of the same specimen, enlarged six diameters.
- FIG. 8.—First maxilliped of the right side of the same specimen, enlarged six diameters.
- FIG. 9.—*Eupagurus bernhardus*. (pp. 28, 29, *et seq.*) First maxilliped of the right side of a male, from station 119 (Halifax, Nova Scotia), enlarged six diameters.

