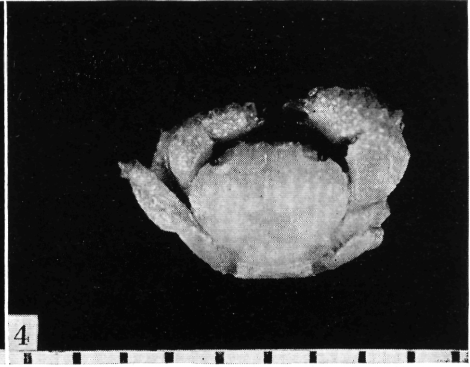
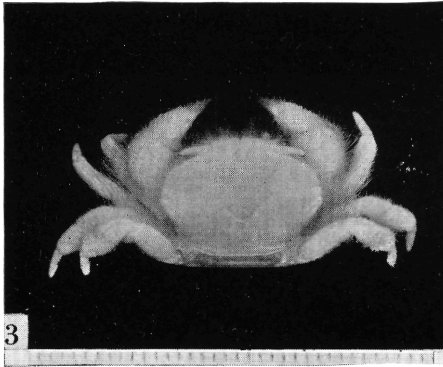
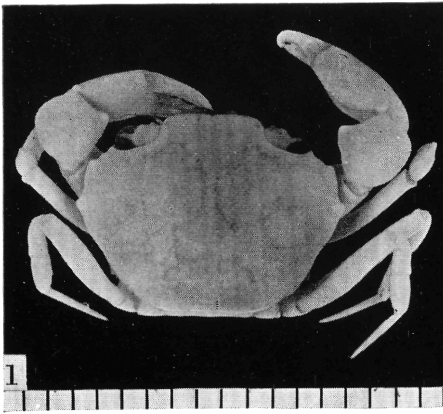


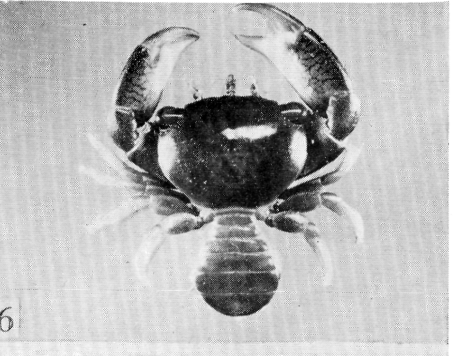
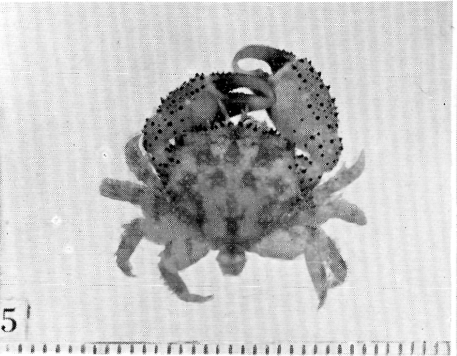
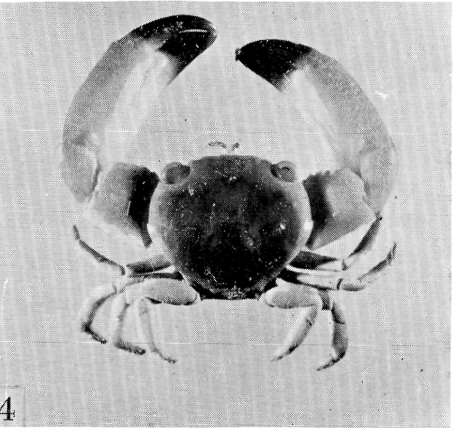
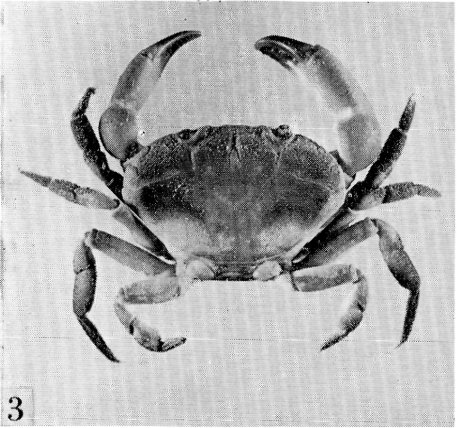
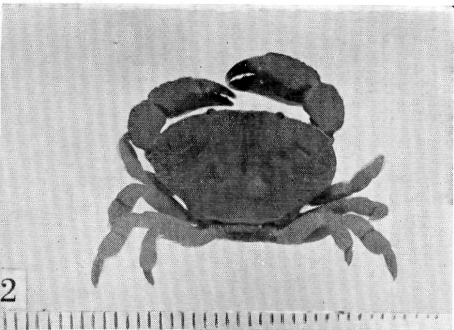
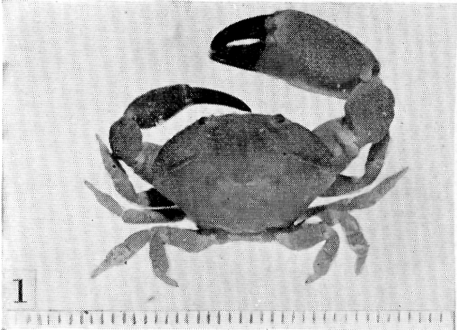
## PLATE 80

- Fig. 1 *Tetraxanthus rathbunae* Chace, young female, dorsal view  
(p. 465)
- Fig. 2 *Eriphia granulosa* A. Milne Edwards, male, dorsal view  
(p. 483)
- Fig. 3 *Acidops fimbriatus* Stimpson, male, dorsal view (p. 474)
- Fig. 4 *Pilumnus pygmaeus* Boone, male, dorsal view (p. 472)
- Fig. 5 *Maldivia galapagensis* Garth, male holotype, dorsal view  
(p. 495)
- Fig. 6 *Quadrella nitida* Smith, young, dorsal view (p. 494)



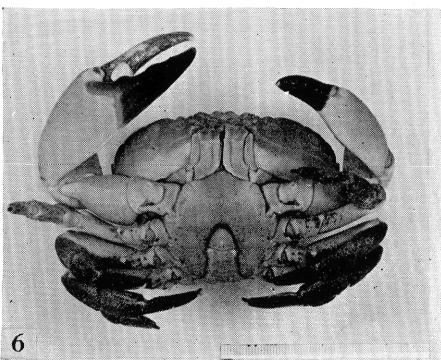
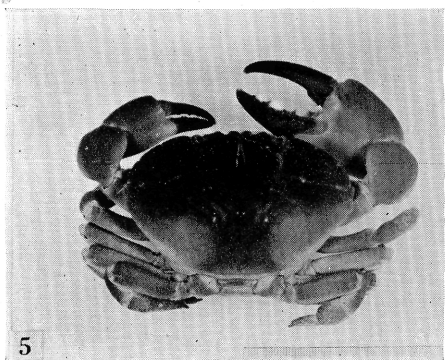
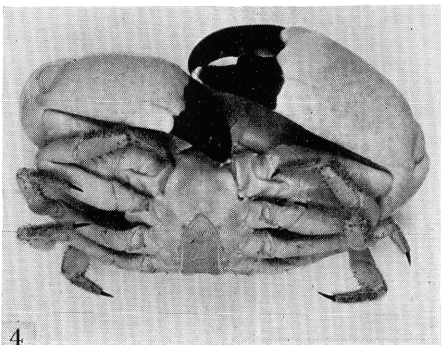
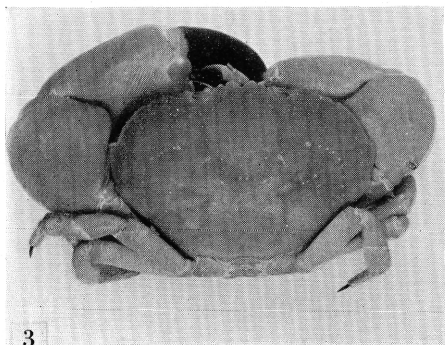
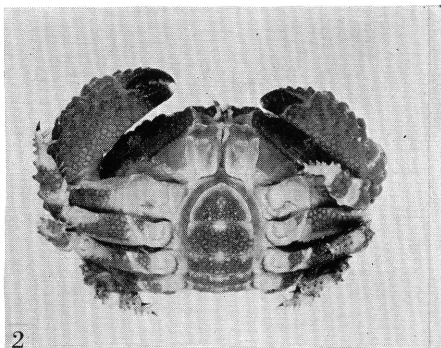
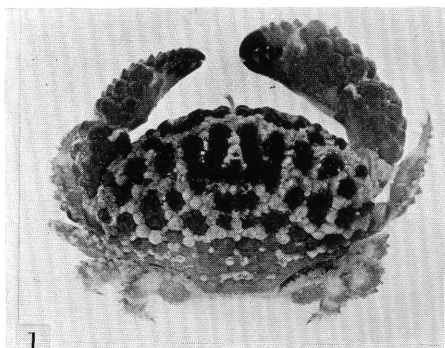
## PLATE 81

- Fig. 1 *Ozius tenuidactylus* (Lockington), male, dorsal view  
(p. 479)
- Fig. 2 *Ozius perlatus* Stimpson, male, dorsal view (p. 477)
- Fig. 3 *Ozius verreauxii* Saussure, young, dorsal view (p. 476)
- Fig. 4 *Trapezia cymodoce ferruginea* Latreille, male, dorsal view  
(p. 491)
- Fig. 5 *Domecia hispida* Eydoux and Souleyet, male, dorsal view  
(p. 489)
- Fig. 6 *Trapezia digitalis* Latreille, female, dorsal view (p. 493)



## PLATE 82

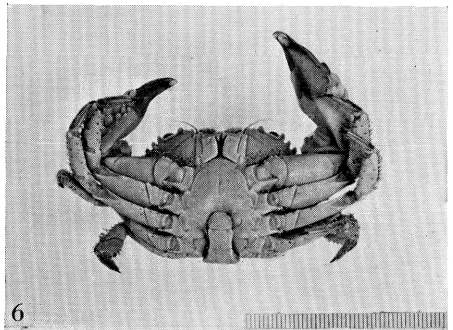
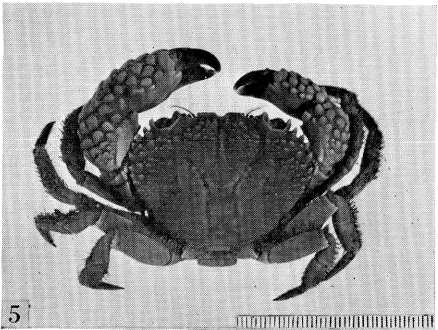
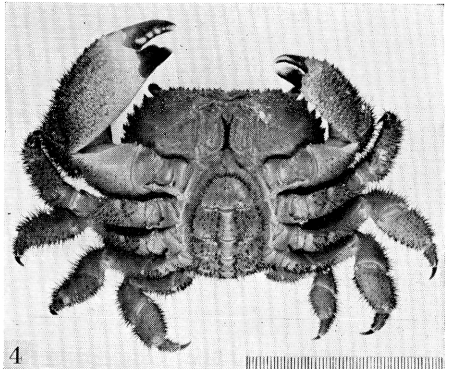
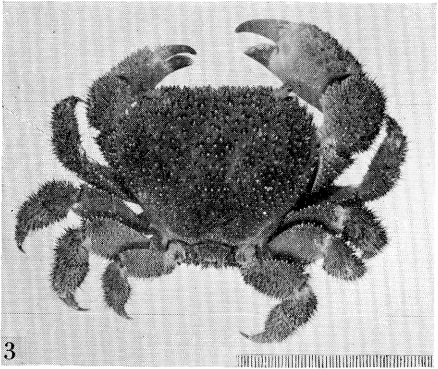
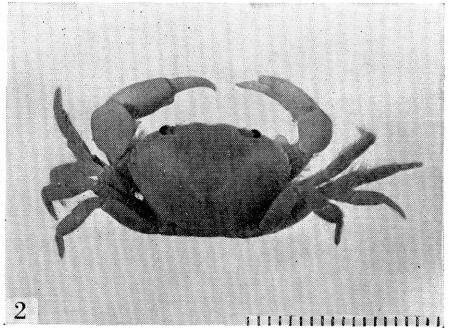
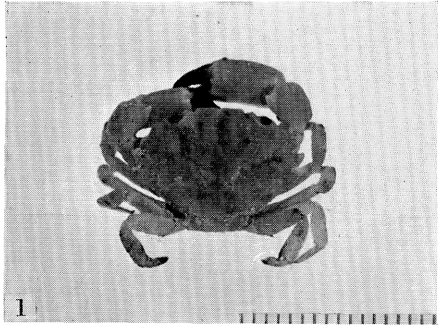
- Fig. 1 *Daira americana* Stimpson, female, dorsal view (p. 438)  
Fig. 2 *Daira americana* Stimpson, female, ventral view  
Fig. 3 *Menippe obtusa* Stimpson, male, dorsal view (p. 470)  
Fig. 4 *Menippe obtusa* Stimpson, male, ventral view  
Fig. 5 *Ozius verreauxii* Saussure, male, dorsal view (p. 476)  
Fig. 6 *Ozius verreauxii* Saussure, male, ventral view



## PLATE 83

- Fig. 1 *Leptodius snodgrassi* Rathbun, male, dorsal view (p. 447)  
Fig. 2 *Eurytium affine* (Streets and Kingsley), female, dorsal view  
(p. 456)  
Fig. 3 *Eriphides hispida* (Stimpson), female, dorsal view (p. 487)  
Fig. 4 *Eriphides hispida* (Stimpson), female, ventral view  
Fig. 5 *Eriphia squamata* Stimpson, male, dorsal view (p. 482)  
Fig. 6 *Eriphia squamata* Stimpson, male, ventral view





## PLATE 84

- Fig. 1 *Parapinnixa glasselli* Garth, female paratype, dorsal view (p. 497)
- Fig. 2 *Parapinnixa glasselli* Garth, female paratype, ventral view
- Fig. 3 *Pinnaxodes chilensis* (Milne Edwards), female, dorsal view (p. 498)
- Fig. 4 *Stronglylocentrotus gibbosus* (Valenciennes)  
host of *Pinnaxodes chilensis* (p. 498)
- Fig. 5 *Pinnaxodes chilensis* (Milne Edwards), female,  
ventral view (p. 498)
- Fig. 6 *Pinnixa transversalis* (Milne Edwards and Lucas), female,  
dorsal view (p. 497)
- Fig. 7 Tube of *Chaetopterus variopedatus* (Renier),  
host of *Pinnixa transversalis* (p. 497)
- Fig. 8 *Pinnixa transversalis* (Milne Edwards and Lucas), female,  
ventral view (p. 497)