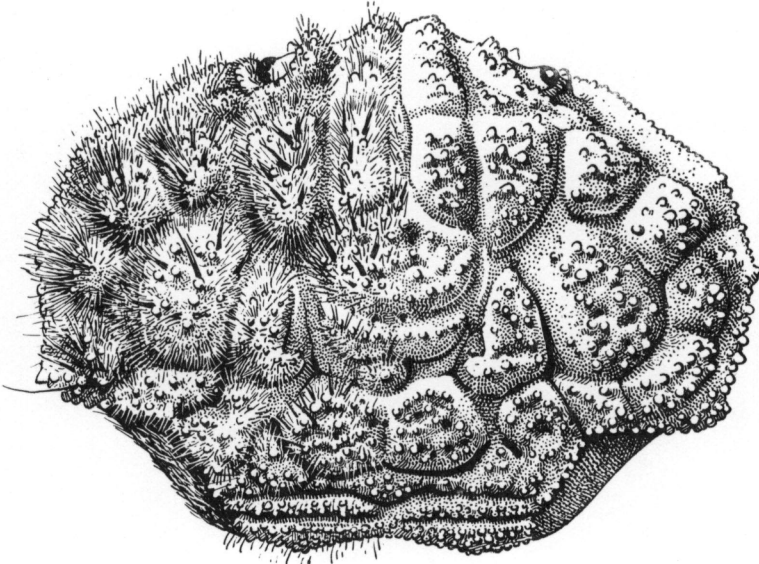


40



41

GENRES *EUXANTHUS* ET *HYPOCOLPUS*

PLANCHE VIII

FIG. 42. — *Euxanthus exsculptus* (Herbst), ♀ 51×34 mm, Nhatrang : vue dorsale.

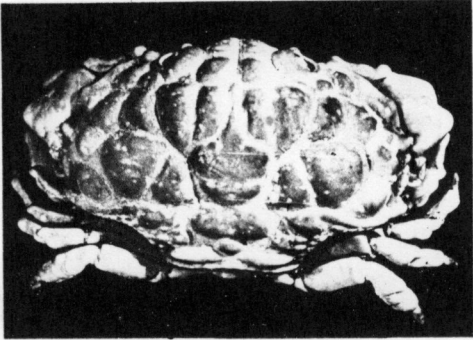
FIG. 43. — *Id.* : face ventrale.

FIG. 44. — *Euxanthus exsculptus* (Herbst), dét. *E. exsculptus* var. *rugosus* Miers par Nobili 1907, ♀ 20×18 mm, Rikitea : vue dorsale.

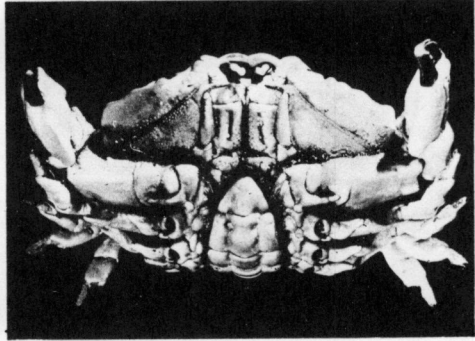
FIG. 45. — *Id.* : face ventrale.

FIG. 46. — *E. exsculptus* (Herbst), Type d'*E. punctatus* A. Milne Edwards, ♂ 40×25 mm, « Mer des Indes » : vue dorsale.

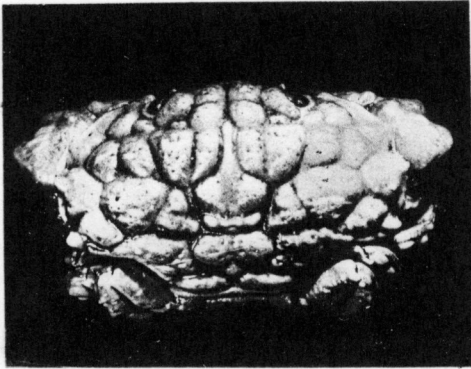
FIG. 47. — *Id.* : face ventrale.



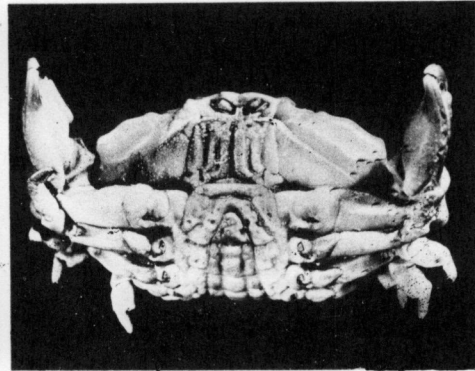
42



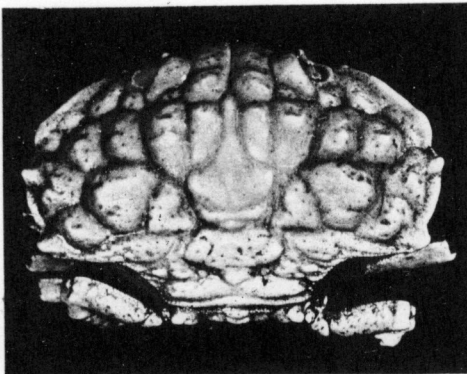
43



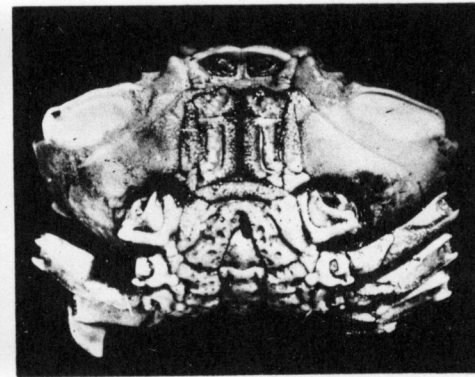
44



45



46



47

GENRES *EUXANTHUS* ET *HYPOCOLPUS*

PLANCHE IX

FIG. 48. — *Euxanthus herdmani* Laurie, ♂ 30,5×23 mm, Golfe de Manaar (d'après Laurie, 1906, pl. 1., fig. 9).

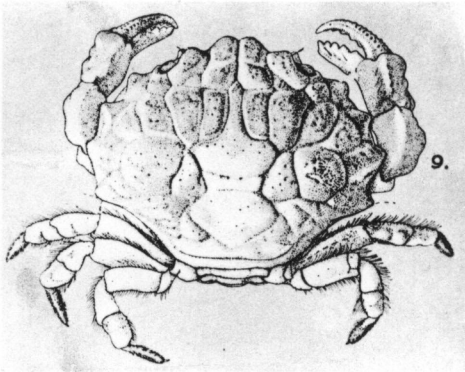
FIG. 49. — *E. sculptilis* Dana, Type de *Cancer huonii* Jacquinot, ♂ 50×34 mm Détroit de Torrès.

FIG. 50. — *E. rugosus* Miers, ♂ 30×20 mm, Ile Maurice.

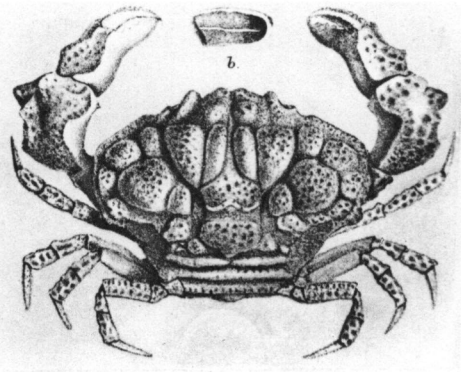
FIG. 51. — *Hypocolpus punctatus* Miers, ♀ 25×18 mm, Ile Thursday (d'après Miers, 1884, pl. XIX, fig. B).

FIG. 52. — *H. granulatus* (de Haan), ♂ 38×27 mm, Japon : vue dorsale.

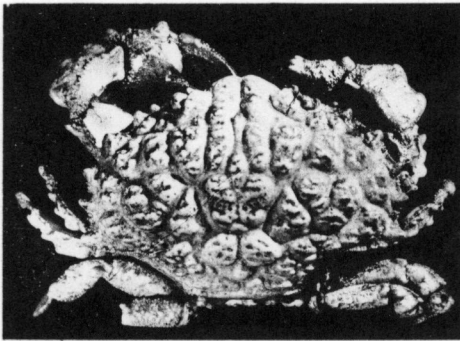
FIG. 53. — *Id.* : vue ventrale, chélipèdes en extension.



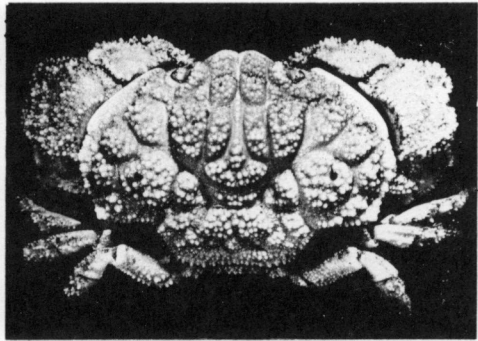
48



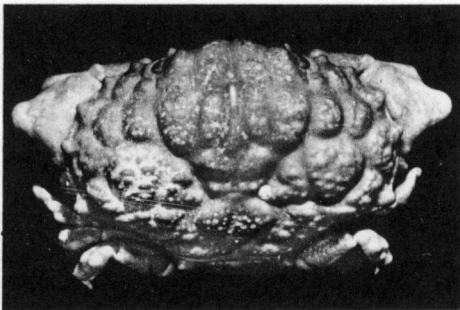
51



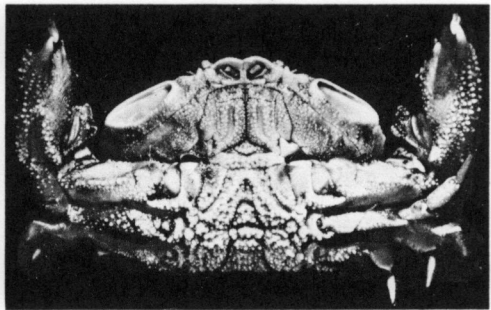
49



52



50



53

GENRES *EUXANTHUS* ET *HYPOCOLPUS*

PLANCHE X

FIG. 54. — *Hypocolpus diverticulatus* (Strahl), ♂ 38×28 mm, Madagascar :
vue dorsale.

FIG. 55. — *Id.* : face ventrale, chélicèdes en extension.

FIG. 56. — *Hypocolpus* sp., ♀ ovigère 36×27 mm, Golfe d'Aden : face ventrale.

FIG. 57. — *Id.* : face dorsale.

FIG. 58. — *H. abotti* (Rathbun), ♂ 55×40 mm, Madagascar : vue frontale.

FIG. 59. — *Id.* : cavité sous-hépatique gauche.