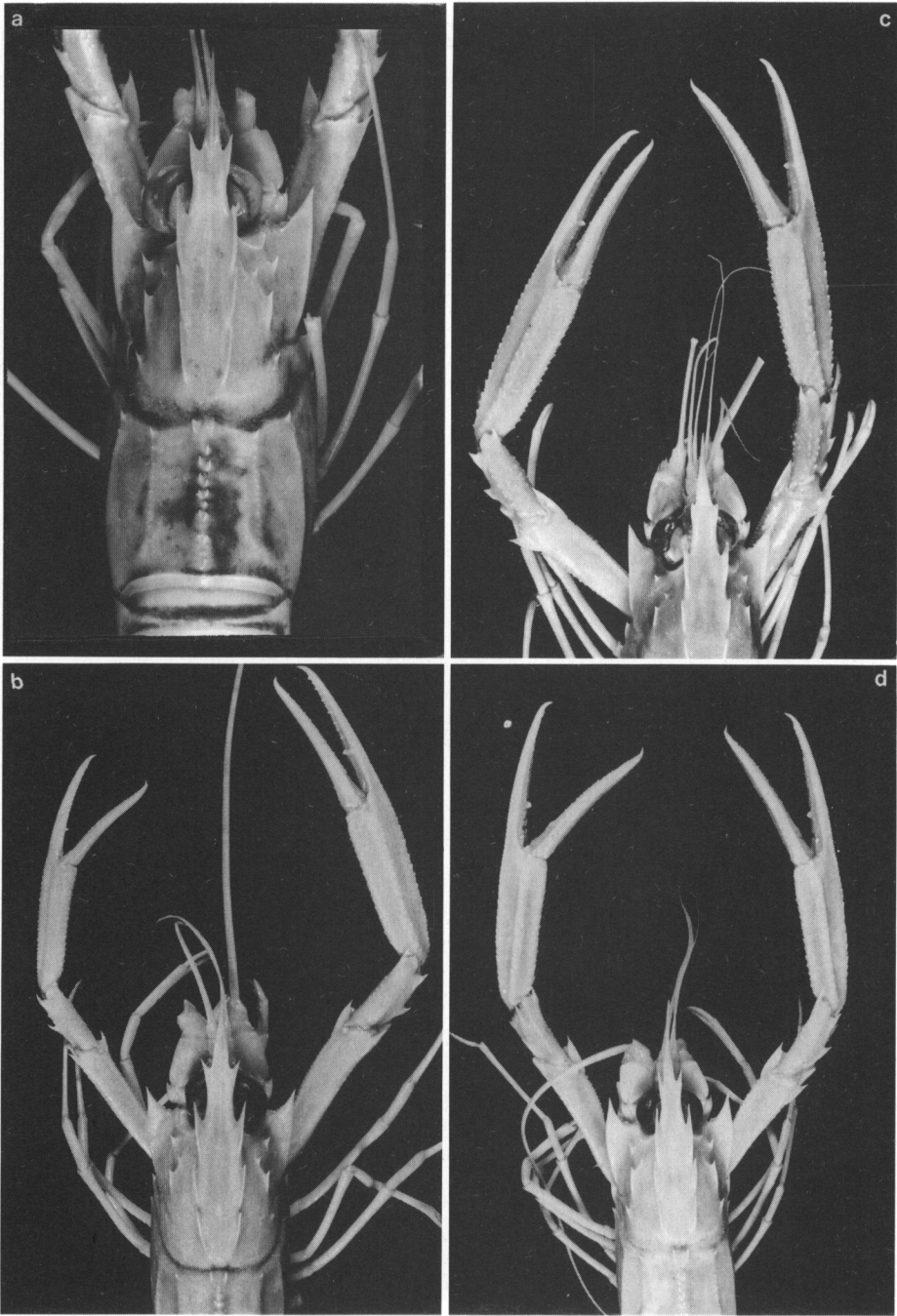
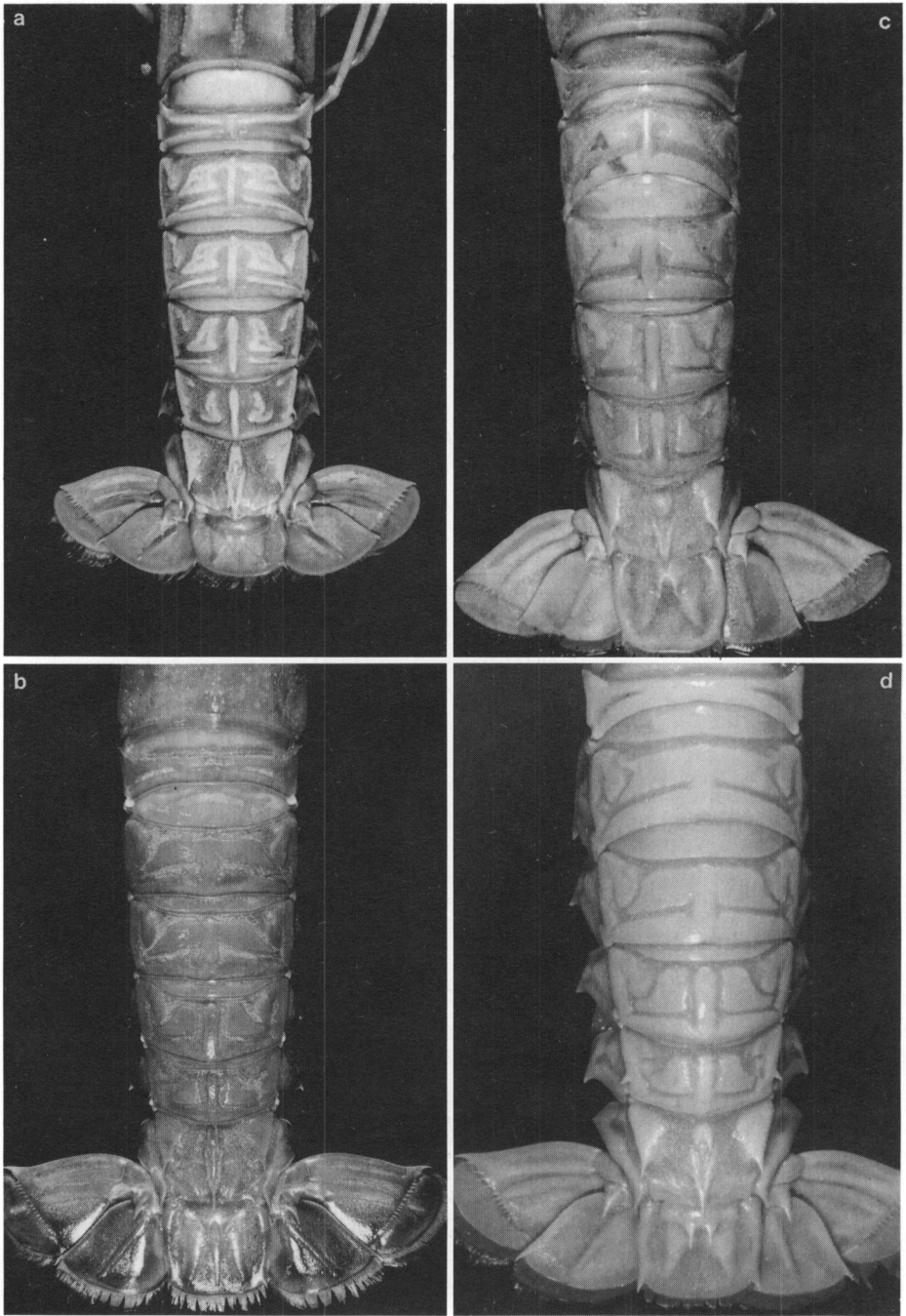


Pl. 3. Dorsal view of anterior carapace and large chelipeds. a, *Metanephrops japonicus*, 44.5 mm, female, Japan; b, *M. armatus* sp. nov., paratype male, 48 mm, Tai-Shi, Taiwan; c, *M. formosanus*, 37 mm, male, Taiwan; d, *M. sagamiensis*, 60 mm, male, Japan.



Pl. 4. Dorsal view of anterior carapace and large chelipeds. a, *Metanephrops andamanicus*, 64 mm (cl. including rostrum), male, Andaman Sea; b, *M. velutinus* sp. nov., holotype male, 48.5 mm, Philippines; c, *M. andamanicus*, 59 mm, male, Tungsha Tao; d, *M. mozambicus*, paratype ovigerous female, 47.5 mm, Madagascar.



Pl. 5. Dorsal view of abdomen. a, *Metanephrops japonicus*, 44.5 mm, female, Japan; b, *M. armatus* sp. nov., holotype male, 57 mm, Su-Ao, Taiwan; c, *M. sagamiensis*, 60 mm male, Japan; d, *M. armatus* sp. nov., paratype ovigerous female, 40 mm, Tai-Shi, Taiwan.