

5 Mar June 1901

UNIVERSITY COLLEGE

University of St. Andrews.

A CATALOGUE
OF
CRUSTACEA
AND OF
PYCNOGONIDA

CONTAINED IN THE
MUSEUM OF UNIVERSITY COLLEGE, DUNDEE.

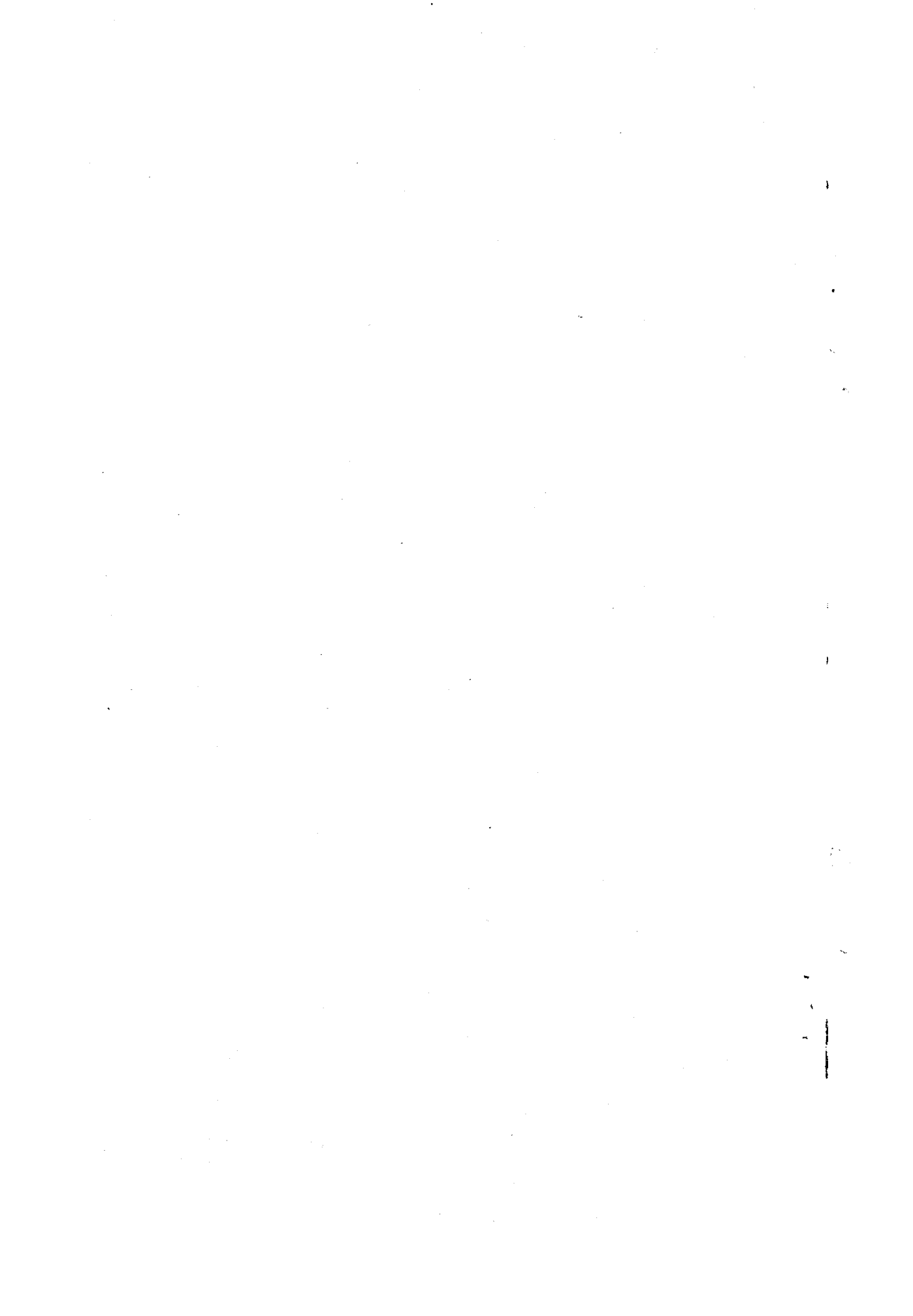
EDITED BY
D'ARCY WENTWORTH THOMPSON, C.B.

PROFESSOR OF NATURAL HISTORY IN UNIVERSITY
COLLEGE, DUNDEE.

DUNDEE:
PRINTED FOR THE MUSEUM.

1901.





University of St. Andrews.

A CATALOGUE
OF
CRUSTACEA

AND OF
PYCNOGONIDA

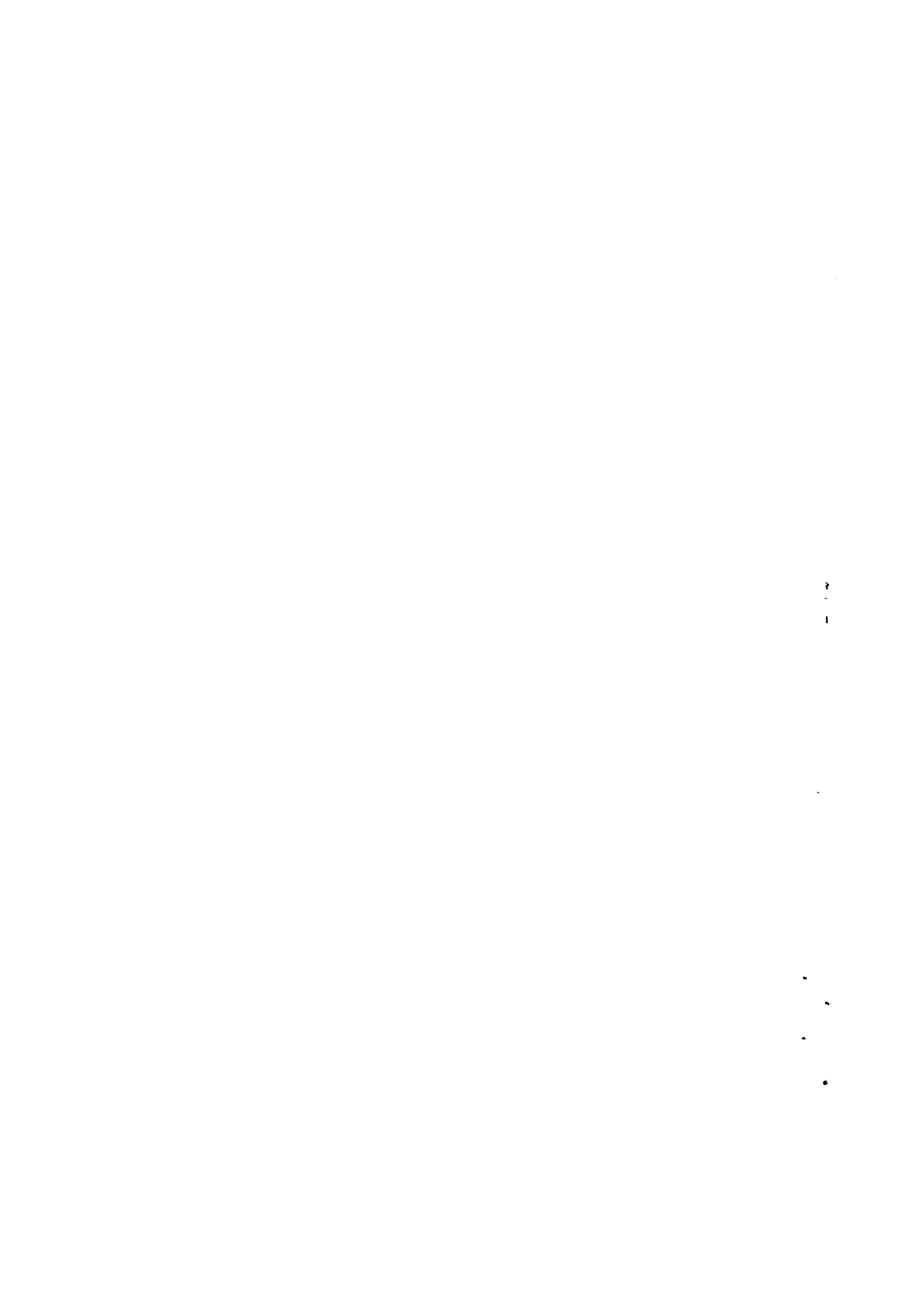
CONTAINED IN THE
MUSEUM OF UNIVERSITY COLLEGE, DUNDEE.

EDITED BY
D'ARCY WENTWORTH THOMPSON, C.B.

PROFESSOR OF NATURAL HISTORY IN UNIVERSITY
COLLEGE, DUNDEE.

DUNDEE :
PRINTED FOR THE MUSEUM.

—
1901.



THE University College of Dundee possesses a Zoological Collection of very recent growth, but nevertheless of considerable range and value. The following Catalogue of Crustacea is but a rough list, to be followed by others of a like kind, that we have prepared in order to take stock of our possessions, to inform Students elsewhere of the things which we can offer them for comparison and study, and to facilitate exchange with other Museums. It is printed at the cost of the Harris Trustees, our liberal benefactors. That the Crustacea are our first group to be catalogued is due to the great labour and pains that my assistant, Dr. Calman, has spent upon them for several years.

Of this, as of other groups of animals, my pupils and I have made considerable collections in many parts of the World; a still greater part of our possessions we owe to the kindness of many friends who have helped us by gifts and by exchanges. In acknowledging our debts to others it behoves me to mention first of all the Dundee Whaling Captains, and in particular Captain Milne and Captain Robertson, who have brought us collections from Davis Straits and the neighbouring waters, year by year, for many years past; to them, to Inspector Andersen (formerly of Godthavn), and to my late assistant, Mr. Alexander Rodger, we owe a great number of Arctic forms.

Apart from the British and Arctic species, our collection of Crustacea is drawn from many sources. Of Brachyura and Macrura our chief series consist of South Sea species purchased from the Godeffroy collection, of species from Torres Straits collected by Professor Haddon, and of Japanese and Alaskan species collected by me. Besides these and among others, we have a certain number of "Challenger" duplicates received from the Trustees of the British Museum, deep-sea forms from the "Talisman" and "Travailleur" expeditions presented by Prof. Milne-Edwards and Prof. Bouvier, deep-sea forms from the "Investigator" dredgings in the Bay of Bengal presented by Dr. Alcock, various forms from South America and from the Red Sea received from the Turin Museum through Prof. Camerano and Dr. Nobili, North American species from the National Museum of the United States, Australian species from the Australian Museum, Sydney, and Mediterranean species from the late Prof. Marion.

Among the Schizopoda our chief rarities are certain large Antarctic Euphausiidæ collected by Mr. Bruce and Dr. Donald in the neighbourhood of the South Shetlands, and a number of specimens of Anaspides presented by Dr. Chilton and Mr. G. M. Thomson. Of Cumacea we owe many British species to Mr. T. Scott, and a number of other forms to the Copenhagen Museum.

As regards the Isopods, we are comparatively rich in terrestrial species. Of these we have received collections from Dr. Chilton, M. Dollfus, Canon Norman, and Dr. Scharff, from the Turin Museum and from the Copenhagen Museum, from which last came a number of co-types of Budde-Lund's species.

Among the Amphipoda we owe British species to the late Mr. David Robertson of Millport, to Mr. T. Scott, and to the Rev. T. R. R. Stebbing; Mediterranean species to M. Chevreux of Bona, Algeria; New Zealand species to Mr. G. M. Thomson of Dunedin; and some interesting species from the Straits of Magellan and South Georgia to Dr. Pfeffer of the Hamburg Museum.

Our collection of Copepoda is almost wholly British, and the greater part of it we owe to Mr. Thomas Scott, F.L.S., of the scientific staff of the Scottish Fishery Board, who has generously given us, among many other things, types of a great number of species described by him and by Mr. Andrew Scott; other Copepoda have been received from Prof. G. S. Brady and from Mr. I. C. Thompson of Liverpool; Dr. P. H. Bassett-Smith has given us many of the parasitic forms; and Dr. Hansen of Copenhagen has given us a beautiful series of his rare and interesting Choniostomatidæ.

Of our small collection of Cladocera, great part has come from Mr. T. Scott and from Mr. Hodgson, now of the National Antarctic Expedition. Our Ostracods are so few in number that we have omitted them from the present Catalogue.

We have appended to the Catalogue of Crustacea a list of our Pycnogonida, which include a number of Dr. Dohrn's Neapolitan species, a number of deep-sea Arctic forms from the "Ingolf" expedition sent us by Dr. Meinert of the Copenhagen Museum, and a number of species from the "Triton" expedition given us by Sir John Murray.

Certain parts of the collection have been studied and revised by special authorities. Dr. Chilton has revised our terrestrial Isopods, Dr. Paul Mayer has named our Caprellidæ, and M. Coutière of Paris our Alpheidæ; most of our Phyllopods are at present in the hands of Dr. Thiele of Berlin.

A very considerable number of species in the collection have the value of types or co-types. Among these are the "Travailleur" and

“Talisman” species described by Prof. Milne-Edwards and Prof. Bouvier, the “Investigator” species described by Dr. Alcock, many of the terrestrial Isopoda described by Mr. Budde-Lund, Dr. Chilton, and M. Dollfus, the many Copepods described by Mr. T. Scott and Mr. Andrew Scott, Dr. Hansen’s Choniostomatidæ, M. Coutière’s Alpheidæ, Mr. Benedict’s American Paguridæ, and various forms from Torres Straits, from Puget Sound, and from Lake Tanganyika described by Dr. Calman.

In each and all of the groups we have still many unidentified species, especially of British and Arctic Amphipoda and Copepoda, of Japanese Macrura and Brachyura, and of North Atlantic and North Pacific Pycnogons.

The Catalogue is but a rough one. Localities are indicated in a brief and general way, and it will be found that in certain cases we have not kept pace with the most recent modifications of nomenclature.

Additions to the collection are earnestly desired, and Dr. Calman and I will do our best to render an adequate return for any specimens that may be offered to us.

D’ARCY W. THOMPSON.



CRUSTACEA.

MALACOSTRACA.—BRACHYURA.

POTAMONIDÆ (TELPHUSIDÆ).

<i>Dilocarcinus borellianus</i> , Nobili.	<i>Paraguay.</i>
<i>D. septemdentatus</i> , (Hbst.).	<i>Paraguay.</i>
<i>Paratelphusa nilotica</i> , (M.E.).	<i>Nile.</i>
<i>Potamon fluviatile</i> , Latr.	<i>Italy.</i>
<i>P. indica</i> , Latr. (?)	<i>India.</i>

XANTHIDÆ.

<i>Actæa tomentosa</i> , (M.-E.).	<i>Samoa, Japan.</i>
<i>A. rufopunctata</i> , (M.-E.).	<i>Samoa.</i>
<i>A. calculosa</i> , (M.-E.).	<i>Torres Straits.</i>
<i>A. cavipes</i> , (Dana).	<i>Samoa.</i>
<i>A. granulata</i> , (Aud.).	<i>Japan.</i>
<i>A. granulata</i> , (Aud.), <i>var. carcharias</i> , White.	<i>Torres Straits.</i>
<i>A. hystrix</i> , Miers.	<i>Torres Straits.</i>
<i>A. peronii</i> , (M.-E.), <i>var. squamosa</i> . Hend. (?)	<i>Torres Straits.</i>
<i>A. ruppellii</i> , Krauss.	<i>Torres Straits.</i>
<i>Actumnus setifer</i> , (De Haan).	<i>Japan, Torres Straits.</i>
<i>Atergatis floridus</i> , (Rumph.).	<i>Samoa, Torres Straits.</i>
<i>Carpilius convexus</i> , (Forsk.).	<i>Samoa, Japan,</i> <i>Torres Straits.</i>
<i>C. maculatus</i> , (L.).	<i>Japan.</i>
<i>Carpilodes tristis</i> , Dana.	<i>Samoa.</i>
<i>C. Vaillantianus</i> , A.M.-E.	<i>Samoa.</i>
<i>C. venosus</i> , (M.-E.).	<i>Japan.</i>
<i>Chlorodius niger</i> , (Forsk.).	<i>Samoa, Torres Straits.</i>
<i>Chlorodopsis areolata</i> , (M.-E.).	<i>Samoa.</i>
<i>C. melanodactyla</i> , A.M.-E.	<i>Torres Straits.</i>
<i>C. spinipes</i> , (Heller).	<i>Torres Straits.</i>
<i>Cymo andreossyi</i> , (Aud.).	<i>Torres Straits.</i>
<i>C. melanodactylus</i> , De Haan.	<i>Torres Straits.</i>
<i>Daira perlata</i> , (Hbst.).	<i>Samoa.</i>
<i>Domœcia hispida</i> , Eyd. Soul.	<i>Samoa.</i>

<i>Epixanthus frontalis</i> (M.-E.).	<i>Tahiti.</i>
<i>E. dentatus</i> , (White).	<i>Fiji.</i>
<i>Eriphia spinifrons</i> , (Hbst).	<i>Mediterranean.</i>
<i>E. lævimana</i> , M.-E.	<i>Samoa.</i>
<i>E. scabricula</i> , Dana.	<i>Samoa.</i>
<i>E. squamata</i> , Stps.	<i>Guayaquil.</i>
<i>Etisodes electra</i> , (Hbst.).	<i>Torres Straits.</i>
<i>E. frontalis</i> , Dana.	<i>Torres Straits.</i>
<i>Etisus laevimanus</i> , Rand.	<i>Pelew, Torres Straits.</i>
<i>Lachnopodus tahitensis</i> , de Man.	<i>Fiji.</i>
<i>Leptodius crassimanus</i> , (A. M.-E.).	<i>Australia.</i>
<i>L. exaratus</i> , (M.-E.).	<i>Torres Straits.</i>
<i>L. sanguineus</i> , M.-E.	<i>Fiji.</i>
<i>L. floridanus</i> , (Gibbes).	<i>St. Thomas.</i>
<i>Liomera cinctimana</i> , (White).	<i>Samoa, Torres Straits.</i>
<i>L. pubescens</i> .	<i>Fiji.</i>
<i>Lioxantho punctatus</i> , (M.-E.).	<i>Samoa.</i>
<i>Lophoactæa granulosa</i> , (Rüpp.).	<i>Samoa, Torres Straits.</i>
<i>Lophopanopeus bellus</i> , (Stps.).	<i>Puget Sound.</i>
<i>Lophozozymus octodentatus</i> (M.-E.).	<i>Torres Straits.</i>
<i>L. dodone</i> , (Hbst.).	<i>Torres Straits.</i>
<i>Menippe mercenaria</i> , Say.	<i>Florida.</i>
<i>Ozius guttatus</i> , (M.-E.).	<i>Torres Straits.</i>
<i>Panopeus Sayi</i> , S. Sm.	<i>Massachusetts.</i>
<i>P. depressus</i> , S. Sm.	<i>Florida.</i>
<i>P. herbstii</i> , M.-E.	<i>East U.S.A.</i>
<i>Phymodius unglatus</i> , (M.-E.).	<i>Samoa, Torres Straits,</i>
	<i>Japan.</i>
<i>P. monticulosus</i> , (Dana).	<i>Samoa.</i>
<i>P. sculptus</i> , (A.M.-E.).	<i>Torres Straits.</i>
<i>Pilumnus hirtellus</i> , (L.).	<i>Britain.</i>
<i>P. vespertilio</i> , (Fabr.).	<i>Samoa, Queensland,</i>
	<i>India.</i>
<i>P. fissifrons</i> , Stps.	<i>N. S. Wales.</i>
<i>P. rufo-punctatus</i> , Stps.	<i>N. S. Wales.</i>
<i>P. cursor</i> , A.M.-E.	<i>Torres Straits.</i>
<i>P. lanatus</i> , (Latr. ?) Miers.	<i>Torres Straits.</i>
<i>P. longicornis</i> , Hilgd. <i>var.</i>	<i>Torres Straits.</i>
<i>P. pulcher</i> , Miers.	<i>Torres Straits.</i>
<i>P. seminudus</i> , Miers.	<i>Torres Straits.</i>
<i>Pseudozium caystrus</i> , (Ad. & Wh.).	<i>Queensland, Samoa.</i>
<i>P. dispar</i> , Dana.	<i>Torres Straits.</i>

<i>Tetralia glaberrima</i> , (Hbst.).	<i>Tahiti, Torres Straits.</i>
Do., <i>var. nigrifrons</i> , Dana.	<i>Torres Straits.</i>
<i>Trapezia cymodoce</i> , (Hbst.).	<i>Upolu, Torres Straits.</i>
<i>T. ferruginea</i> , Latr., <i>var. maculata</i> (M'Leay).	<i>Tahiti.</i>
<i>T. ferruginea, var. guttata</i> , Rüpp.	<i>Tahiti.</i>
<i>T. ferruginea, var. areolata.</i>	<i>Samoa, Lord Howe</i> <i>Id., Torres Straits.</i>
<i>Xantho incisus</i> , Leach.	<i>Britain.</i>
<i>X. hydrophilus</i> , (Hbst.).	<i>Britain.</i>
<i>X. bidentatus</i> , A.M.-E.	<i>Samoa.</i>
<i>Xanthodes Lamarckii</i> , (M.-E.).	<i>Samoa, Torres Straits.</i>
<i>X. Talismani</i> , A.M.-E. & Bouv.	<i>Cape Verde Island,</i> <i>"Talisman."</i>
<i>X. granosus</i> , A.M.-E. & Bouv.	<i>La Praya,</i> <i>"Talisman."</i>
<i>X. melanodactylus</i> , A.M.-E.	<i>Cape Verde Islands,</i> <i>"Talisman."</i>
<i>X. atromanus</i> , Hasw.	<i>Lord Howe Island.</i>
<i>Zozymus æneus</i> , (L.).	<i>Samoa.</i>

PORTUNIDÆ.

<i>Bathynectes longipes</i> , Risso.	<i>Mediterranean.</i>
<i>B. superba</i> , Costa.	<i>Cape Verde Id., (960 m.,</i> <i>"Talisman," 1883).</i>
<i>Caphyra rotundifrons</i> , A.M.-E.	<i>Torres Straits.</i>
<i>Carcinus mænas</i> , (L.).	<i>Britain,</i> <i>New England.</i>
<i>Carupa laeviuscula</i> , Heller.	<i>Samoa.</i>
<i>Charybdis variegata</i> , De Haan.	<i>Madras.</i>
<i>Lissocarcinus orbicularis</i> , Dana.	<i>Torres Straits.</i>
<i>Neptunus pelagicus</i> , (L.).	<i>Torres Straits, China,</i> <i>Japan, &c.</i>
<i>N. sanguinolentus</i> , (Hbst.).	<i>Honolulu,</i> <i>Torres Straits.</i>
<i>N. granulatus</i> , M.-E.	<i>Torres Straits.</i>
<i>N. granulatus, var. unispinosus</i> , Miers.	<i>Torres Straits.</i>
<i>N. Whitei</i> , (A.M.-E.).	<i>New Guinea.</i>
<i>Polybius henslowi</i> , Leach.	<i>Britain.</i>
<i>Portumnus latipes</i> , (Penn.).	<i>Britain.</i>
<i>Portunus puber</i> , (L.).	<i>Britain.</i>
<i>P. depurator</i> , (L.).	<i>Britain</i>

Portunus corrugatus, (Penn.).	<i>Britain.</i>
P. arcuatus, Leach.	<i>Britain,</i> <i>Mediterranean.</i>
P. pusillus, Leach.	<i>Britain.</i>
P. holsatus, (Fabr.).	<i>Britain.</i>
P. marmoreus, Leach.	<i>Britain.</i>
P. tuberculatus, Roux.	<i>Britain.</i>
Scylla serrata, (Forsk.).	<i>Japan.</i>
Thalamita admete, A.M.-E.	<i>Torres Straits, Tahiti.</i>
T. erenata, (Latr.).	<i>Marquesas, Japan.</i>
T. cœrulipes, Jacq. et Lucas.	<i>Caroline Islands.</i>
T. prymna, (Hbst.).	<i>Torres Straits, India.</i>
T. sima, M.-E.	<i>Torres Straits.</i>

CANCRIDÆ.

Atelecyclus septemdentatus, (Mont.).	<i>Britain.</i>
Cancer borealis, Stps.	<i>N.E. Coast, U.S.A.</i>
C. gracilis, Dana.	<i>Vancouver Island.</i>
C. irroratus, Say.	<i>E. Coast, U.S.A.</i>
C. magister, Dana.	<i>Puget Sound.</i>
C. novæ-zealandiæ, Jacq. et Lucas.	<i>New Zealand.</i>
C. pagurus, L.	<i>Britain.</i>
C. plebeius, Pöppig.	<i>Valparaiso.</i>
C. productus, Randall.	<i>W. Coast, U.S.A.</i>
Kraussia nitida, Stps.	<i>Torres Straits.</i>
Peltarion spinulosum, White.	<i>South Chile.</i>
Pirimela denticulata, (L.).	<i>S.W. Ireland.</i>
Telmessus cheiragonus, (Til.).	<i>N. Pacific,</i> <i>Behring Sea.</i>
Thia residuus, (Hbst.).	<i>Jersey.</i>
Trichocarcinus oregonensis, Dana.	<i>N. Pacific.</i>

CORYSTIDÆ.

Corystes cassivelaunus, (Penn.).	<i>Britain.</i>
Gomezia bicornis, Gray.	<i>Japan.</i>

GECARCINIDÆ.

Uca una, Leach.	<i>Surinam</i>
-----------------	----------------

OCYPODIDÆ.

CARCINOPLACINÆ.

Carcinoplax longimana, (de Haan).	<i>Japan.</i>
<i>C. longipes</i> , (W.-M.).	<i>Travancore.</i>
Geryon tridens, Kr.	<i>Norway.</i>
<i>G. longipes</i> , A.M.-E.	<i>Bay of Biscay,</i> <i>“Travailleur,” 1880,</i> <i>1160 m.</i>
Psoptheticus stridulans, W.-M.	<i>Andaman Sea.</i>

OCYPODINÆ.

Gonoplax rhomboides, (L.).	
Helæcius cordiformis (M.-E.).	<i>Australia.</i>
Macrophthalmus dilatatus, De Haan.	<i>Japan.</i>
<i>M. japonicus</i> , De Haan.	<i>Japan.</i>
Ocypoda cordimana, Desm.	<i>Madras.</i>
<i>O. ceratophthalma</i> , (Pall.).	<i>Torres Straits, Japan</i>
<i>O. Gaudichaudii</i> , Edw. & Luc.	<i>Guayaquil.</i>
<i>O. hippeus</i> , Olivier. (?)	<i>Cape Verde,</i> <i>“Challenger.”</i>
Ommatocarcinus macgillivrayi, White.	<i>Japan.</i>
Gelasimus annulipes, (M.-E.).	<i>Gulf of Manaar.</i>
<i>G. arcuatus</i> , (de Haan).	<i>Japan.</i>
<i>G. cultrimanus</i> , (White).	<i>Samoa, Fiji, Japan.</i>
<i>G. Gaimardii</i> , (M.-E.).	<i>Samoa.</i>
<i>G. Latreillei</i> , (M.-E.).	<i>Samoa, Japan.</i>
<i>G. pugilator</i> , (Bosc).	<i>U.S.A.</i>
<i>G. pugnax</i> , Smith.	<i>New England.</i>
<i>G. tetragonon</i> , (Hbst.).	<i>Massowah, Samoa,</i> <i>Torres Straits.</i>
<i>G. vocator</i> , (Hbst.).	<i>Antigua, Surinam.</i>

GRAPSIDÆ.

GRAPSINÆ.

Chasmagnathus lævis, Dana.	<i>Sydney.</i>
Cyclograpsus punctatus, M.-E.	<i>Sydney.</i>
Epigrapsus politus, Heller.	<i>Samoa.</i>
Goniopsis cruentatus, (Latr.).	<i>Bermuda,</i> <i>“Challenger.”</i>

Grapsus grapsus, (L.).	<i>Guayaquil, Pelew Islands, Japan.</i>
<i>G. strigosus, (Hbst.).</i>	<i>South Seas.</i>
Helice tridens, De Haan.	<i>Japan.</i>
Heterograpsus nudus, Dana.	<i>N. Pacific.</i>
<i>H. oregonensis, Dana.</i>	<i>N. Pacific.</i>
<i>H. Lucasi, Heller.</i>	<i>Lake of Bezerte, N. Africa.</i>
<i>H. pilimanus,</i>	<i>E. Australia.</i>
Metasesarma rousseauxi, M.-E.	<i>Samoa.</i>
Metopograpsus messor, (Forsk.).	<i>E. Australia, Madras, Fiji.</i>
Pachygrapsus marmoratus, (Fabr.).	<i>Mediterranean.</i>
<i>P. transversus, Gibbes.</i>	<i>Lord Howe Islands.</i>
Planes minutus, (L.).	<i>Atlantic.</i>
Platygrapsus depressus, (De Haan).	<i>Japan.</i>
Sesarma erythroductyla, Hess.	<i>Australia.</i>
<i>S. quadrata, (Fabr.).</i>	<i>Madras.</i>
<i>S. tetragona, (Fabr.).</i>	<i>South Seas.</i>
Varuna litterata, (Fabr.).	<i>Torres Straits.</i>
 PLAGUSINÆ.	
Liolophus abbreviatus, Dana.	<i>Japan.</i>
<i>L. planissimus, (Hbst.).</i>	<i>Fiji.</i>
Plagusia immaculata, Lamk.	<i>Japan, South Seas.</i>
 PALICINÆ.	
Palicus caronii, Roux.	<i>Canary Islands.</i>
<i>P. jukesii, (White).</i>	<i>Torres Straits.</i>
<i>P. whitei, (Miers).</i>	<i>Torres Straits.</i>
 PINNOTHERIDÆ.	
PINNOTHERINÆ.	
Fabia subquadrata, Dana.	<i>Vancouver.</i>
Pinnixa faba, Dana.	<i>N. Pacific.</i>
Pinnotheres pisum, (L.).	<i>British.</i>
 MYCTERINÆ.	
Mycteris longicarpus, Latr.	<i>Australia.</i>
<i>M. platycheles, M.-E.</i>	<i>Hawkesbury River, N.S.W.</i>

Scopimera mycteroides, (M.-E.).	<i>Gulf of Manaar.</i>
<i>S. tuberculata</i> , Stps.	<i>Japan.</i>
HYMENOSOMINÆ.	
<i>Halicarcinus planatus</i> , (Fabr.).	<i>Falkland Islands.</i>
INCERTÆ SEDIS.	
<i>Hapalocarcinus marsupialis</i> , Stps.	<i>Torres Straits.</i>
MAIIDÆ.	
INACHINÆ.	
<i>Achæus affinis</i> , Miers.	<i>Torres Straits.</i>
<i>A. Cranchii</i> , Leach.	<i>South of England.</i>
<i>Encephaloides armstrongi</i> , W.-M.	<i>Bay of Bengal. 65 f.</i>
<i>Ergasticus clouei</i> , A.M.-E.	<i>Mediterranean, 499</i> <i>m., "Travailleur."</i>
<i>Euprognathia rostellifera</i> , (Stps.).	<i>Martha's Vineyard,</i> <i>U.S.A.</i>
<i>Eurypodius latreillei</i> , Guér.	<i>Chall. Exp. "Pt. Famine."</i> <i>" St. 315.</i>
<i>Inachus dorsettensis</i> , (Penn.).	<i>Britain, Norway, &c.</i>
<i>I. dorynchus</i> , Leach.	<i>Britain.</i>
<i>I. leptochirus</i> , Leach.	<i>"Trilon," St. III.</i> <i>87 f.</i>
<i>Lispognathus Thomsoni</i> , (Norm.).	<i>S.W. Ireland.</i> <i>Bay of Biscay, "Travailleur,"</i> <i>896. m.</i> <i>"Knight Errant," St. V.</i> <i>515 f.</i>
<i>Macrocheira Kämpferi</i> , De Haan.	<i>Japan.</i>
<i>Macropodia rostratus</i> , (L.).	<i>Britain.</i>
<i>M. longirostris</i> , (Fabr.).	<i>Britain.</i>
<i>Ocinopus aranea</i> , De Haan.	<i>Torres Straits.</i>
<i>Oregonia gracilis</i> , Dana.	<i>N. Pacific.</i>
<i>Paratymolus sexspinosus</i> , Miers.	<i>Torres Straits.</i>
<i>Physachæus ctenurus</i> , Alc.	<i>Travancore. 406 f.</i>
ACANTHONYCHINÆ.	
<i>Acanthonyx lunulatus</i> , (Risso).	<i>Mediterranean.</i>

<i>Epialtus productus</i> , Rand.	<i>N. Pacific.</i>
<i>Huenia proteus</i> , De Haan.	<i>Torres Straits.</i>
<i>Menæthius monoceros</i> , (Latr.).	<i>Andamans, Samoa,</i> <i>Torres Straits.</i>
<i>Pugettia gracilis</i> , Dana.	<i>N. Pacific.</i>
<i>P. quadridens</i> , (De Haan).	<i>Japan.</i>
<i>Scyramathia Carpenteri</i> , (Norm.).	<i>S.W. Ireland.</i> <i>Porto, "Travailleur," 1882,</i> <i>1260 m</i> <i>"Knight Errant," St. V.</i> <i>515 f.</i>
<i>S. beauchampi</i> , Alc. & And.	<i>Bay of Bengal, 193 f.</i>
<i>S. rivers-andersoni</i> , Alc.	<i>Travancore, 406 f.</i>
<i>Xenocarcinus tuberculatus</i> , White.	<i>Torres Straits.</i>

PISINÆ.

<i>Chionæcetes opilio</i> (O. Fabr.).	<i>Labrador, Pribyloff</i> <i>Islands, N. Pacific.</i>
<i>C. tanneri</i> , Rthb.	<i>Behring Sea, 660 f.</i>
<i>Doclea hybrida</i> , (Fabr.).	<i>Madras.</i>
<i>Egeria arachnoides</i> , (Rumph.).	<i>Hong-Kong.</i>
<i>Eurynome aspera</i> , (Penn.).	<i>Galkav.</i> <i>Cape Bejador, "Talisman,"</i> <i>1883. 130 m.</i>
<i>Hyas araneus</i> , (L.).	<i>Britain, Greenland,</i> <i>U.S.A.</i>
<i>H. coarctatus</i> , Leach.	<i>Britain, U.S.A.</i>
<i>H. lyratus</i> , Dana.	<i>Vancouver Island.</i>
<i>Hyastenus Brockii</i> , De Man.	<i>Torres Straits.</i>
<i>H. convexus</i> , Miers.	<i>Torres Straits.</i>
<i>H. hilgendorfi</i> , De Man.	<i>Malacca Straits.</i>
<i>H. longipes</i> , (Dana).	<i>N. Pacific.</i>
<i>H. oryx</i> , A.M.-E.	<i>Andamans,</i> <i>Torres Straits.</i>
<i>H. spinosus</i> , A.M.-E.	<i>Torres Straits.</i>
<i>H. verrucosipes</i> , Ad. & Wh.	<i>Torres Straits.</i>
<i>Libinia dubia</i> , M.-E.	<i>New England.</i>
<i>L. emarginata</i> , Leach.	<i>New England.</i>
<i>Naxia investigatoris</i> , Alc.	<i>Ceylon.</i>
<i>N. serpulifera</i> , (Guér.).	<i>Torres Straits.</i>
<i>N. taurus</i> , Pocock.	<i>Torres Straits.</i>
<i>Scyra acutifrons</i> , Dana.	<i>N. Pacific.</i>
<i>Tylocarcinus styx</i> , (Hbst.).	<i>Samoa, Torres Straits.</i>

MAIINÆ.

Cyclax suborbicularis (Stps.).	<i>Samoa, Torres Straits.</i>
Maia squinado, (Hbst.).	<i>Britain.</i>
<i>M. verrucosa</i> , M.-E.	<i>Mediterranean.</i>
Micippa philyra, (Hbst.).	<i>Andamans,</i> <i>Torres Straits.</i>
<i>M. spinosa</i> , Stps.	<i>Australia.</i>
Microphrys bicornuta, (Latr.).	<i>Florida, St. Thomas.</i>
Mithrax sculptus, (Lamk.).	<i>Florida.</i>
Paramithrax aculeatus, (M.-E.).	<i>Torres Straits.</i>
<i>P. barbicornis</i> , (Latr.).	<i>New Zealand.</i>
<i>P. coppingeri</i> , Hasw.	<i>Torres Straits.</i>
<i>P. longispinus</i> , (De Haan).	<i>Palk Strait.</i>
Pseudomicippa varians, Miers.	<i>Torres Straits.</i>
Schizophrys aspera, (M.-E.).	<i>Samoa, Torres Straits.</i>
Tiarinia cornigera, (Latr.).	<i>Andamans.</i>
<i>T. angusta</i> , Dana.	<i>Torres Straits.</i>

PARTHENOPIDÆ.

Cryptopodia angulata, Edw. & Luc.	<i>Orissa Coast.</i>
Lambrus beaumontii, Alc.	<i>Ceylon.</i>
<i>L. (Parthenolambrus) calappoides</i> , Ad. & Wh.	<i>Torres Straits.</i>
<i>L. (Parthenolambrus) confragosus</i> , Calm.	<i>Torres Straits.</i>
<i>L. curvispinis</i> , Miers.	<i>Andamans.</i>
<i>L. (Aulacolambrus) hoplonotus</i> , Ad. & Wh.	<i>Torres Straits.</i>
<i>L. longimanus</i> , Leach.	<i>Madras.</i>
<i>L. massena</i> , Roux.	<i>Mediterranean.</i>
<i>L. pelagicus</i> , Rüpp.	<i>Andamans, Samoa.</i>
<i>L. prensor</i> , (Hbst.).	<i>Orissa Coast.</i>
<i>L. turriiger</i> , White.	<i>Andamans.</i>

CALAPPIDÆ.

Calappa lophos, (Herbst).	<i>Ceylon, Madras.</i>
<i>C. hepatica</i> , (L.).	<i>North Queensland,</i> <i>Japan.</i>
Matuta victor, Fabr.	<i>Madras, E. Australia,</i> <i>New Guinea.</i>
<i>M. banksii</i> , Leach.	<i>Andamans,</i> <i>E. Australia.</i>

M. miersii, Hdsn.	India.
M. lunaris, (Hbst.).	India, Japan.
Mursia acanthophora, (Lucas).	Japan.

LEUCOSIIDÆ.

Arcania gracilipes, Bell. (?)	Torres Straits.
A. quinquespinosa, Alc. & And.	India.
A. septemspinosa, (Fabr.).	India.
Ebalia cranchii, Leach.	S. W. Ireland, 54 f. "Porcupine" Exp. Off Bundoran. 20-35 f.
E. crassipes, Bell.	Port Jackson, "Challenger" Exp.
E. nux, (Norm.).	S. W. Ireland. Spain, "Travailleur." 300 m.
E. tuberculosa, (A.M.-E.).	Bass's Straits, "Challenger" Exp.
E. tuberosa, (Penn.).	Britain.
E. (Philyxia) 11-spinosa, var. orbicularis, (Hasw.).	S. Australia.
Ilia nucleus, (Herbst).	N. Africa.
Leucosia haswelli, Miers.	Andamans, Torres Straits.
L. longifrons, de Haan.	Andamans, Japan.
L. longifrons, var. pulcherrima, Miers.	Torres Straits.
L. obtusifrons, de Haan.	Japan.
L. neocaledonica, A.M.-E.	Palk Strait.
L. rhomboidalis, de Haan.	Gulf of Martaban.
L. unidentata, de Haan.	Andamans.
L. whitmeei, Miers.	Andamans.
Myra australis, Hasw. (?)	Torres Straits.
M. brevimana, Alc.	Ceylon.
M. darnleyensis, Hasw.	Andamans.
M. fugax, (Fabr.).	Torres Straits.
Nursia hardwickii, Leach.	Palk Strait.
N. plicata, (Hbst.).	Hongkong.
Nursilia dentata, Bell.	Andamans.
Oreophorus frontalis, Miers.	Torres Straits.
Parilia alcocki, W.-M.	Bay of Bengal.
Philyra globosa, (Fabr.).	Orissa Coast.
P. globulosa, M.-E.	Orissa Coast.

<i>P. pisum</i> , de Haan.	<i>Japan</i> .
<i>P. platychira</i> , de Haan.	<i>Andamans</i> .
<i>P. scabriuscula</i> , (Fabr.).	<i>India</i> .
<i>Pseudophilyra melita</i> , de Man.	<i>Orissa Coast</i> .
<i>P. tridentata</i> , Miers.	<i>Torres Straits</i> .

DORIPPIDÆ.

<i>Dorippe sima</i> , M.-E.	<i>Madras</i> .
<i>D. lanata</i> , Bosc.	<i>Mediterranean</i> .
<i>D. dorsipes</i> , (L.),	<i>Palk Strait</i> .
<i>D. facchino</i> , (Hbst.).	<i>Orissa Coast</i> .
<i>Ethusa mascarone</i> , Herbst.	<i>Mediterranean</i> .
<i>E. indica</i> , Alc.	<i>Travancore</i> .
<i>Ethusina abyssicola</i> , Smith.	" <i>Talisman</i> ,"
	<i>42° N., 23° W., 440 m.</i>
<i>Cymonomus granulatus</i> , Norman.	" <i>Travaillcur</i> ," 1880.

CYCLODORIPPIDÆ.

<i>Cyclodorippe dromioides</i> , Ortm.	<i>Japan</i> .
--	----------------

RANINIDÆ.

<i>Lyrideus channeri</i> , W.-M.	<i>Ceylon, 320-296 f.</i>
<i>L. tridentatus</i> , de Haan.	<i>Japan</i> .
<i>Ranina scabra</i> , (Fabr.).	<i>Japan</i> .

DROMIACEA.

<i>Dromia vulgaris</i> , M.-E.	<i>Mediterranean</i> .
<i>D. Rumphii</i> , Fabr. (?)	<i>Japan</i> .
<i>Dicranodromia Mahyeuxii</i> , A.M.-E. (<i>Co-type</i>).	<i>Cape Bojador</i> ,
	" <i>Talisman</i> ," 1883.
<i>Dynomene Filholi</i> , Bouv. (<i>Co-type</i>).	<i>Branco & Razzo Ids.</i>
	" <i>Talisman</i> ," 1883.
<i>Latreillia phalangium</i> , de Haan (?).	<i>Japan</i> .
<i>Hypsophrys superciliosa</i> , W.-M.	<i>Malabar, 931 f.</i>

MALACOSTRACA.—MACRURA.

AEGLEIDÆ.

Aeglea levis, Leach. *Argentine*

CHIROSTYLIDÆ.

Chirostylus formosus, A.M.-E. *Bay of Biscay,*
"Talisman," 1480 m.
Uroptychus nitidus, var. concolor, A.M.-E. & *Morocco, 834-868 m.,*
 Bouv. (*Co-type*). *"Talisman," 1883.*
U. rubro-vittatus, (M.-E.). *S.W. Ireland, 750 f.*

GALATHEIDÆ.

Galathea Agassizii, A.M.-E. *Cape Bojador, 882 m.*
G. dispersa, Sp. Bate. *Britain, Norway.*
G. intermedia, Lilljbg. *W. of Ireland,*
"Talisman," 60 m.
G. nexa, Embleton. *Britain.*
G. rufipes, A.M.-E. & Bouv. (*Co-type*). *Cape Verde Islands,*
"Talisman."
G. squamifera, Leach. *Britain, &c.*
G. strigosa, Fabr. *Britain.*
Galathodes tridentatus, Esmark. *Cape Verde Islands,*
"Talisman," 593-633 m.
Lofoten, 150 f.
Munida bamffica, (Penn.). *Britain.*
M. bamffica, var. rugosa, (Fabr.). *Britain, Norway,*
Bay of Biscay, "Talisman,"
764 m.
M. caribæa, Smith. *U.S.A.*
M. curvimana, A.M.-E. & Bouv. *I. Branco, 60 m.*
"Talisman."
M. iris, A.M.-E. *Newport, U.S.A.*
M. militaris, Hdsn., *var. andamanica.* *Andaman Sea, 173 f.*
M. perarmata, A.M.-E. & Bouv. *"Travailleur," 1087 m.*
M. Sancti-Pauli, Hend. *Cape Bojador,*
"Talisman."
M. squamosa, Hdsn., *var. proluxa*, Alc. *Colombo, 142-400 f.*
M. subrugosa, (White). *Magellan Strait.*

- Grimothea gregaria, Leach. (? *Munida subrugosa*,
(White), juv.) *Dunedin, N.Z.*
M. tenuimana, G. O. Sars. "Triton," 59' N.,
7° W., 555 f.
- Munidopsis longirostra*, A.M.-E. & Bouv. "Talisman," 2212 m.
M. rosacea, A.M.-E. *Travancore*, 430 f.
M. scobina, Alc. *Andaman Sea*, 272 f.
M. Talismani, A.M.-E. & Bouv. (*Co-type*). "Talisman," 19' W.,
22° N.
- PORCELLANIDÆ.**
- Pachycheles rudis*, Stm. *Vancouver Island*,
Puget Sound.
P. barbatus, A.M.-E. *La Praya*,
"Talisman."
- Petrolisthes cinctipes*, Randall. *Vancouver Island*,
Puget Sound.
P. varius, Dana. *Valparaiso*.
P. elongatus, (M.-E.). *New Zealand*.
P. speciosus, (Dana). *South Sea*.
Polyonyx obesulus, (White). *Chall. Exp.*, from "*Hippos-*
pongia anomala," Polj.
N. Australia, St. 186.
- Porcellana platycheles*, (Penn.). *Britain*.
P. longicornis, (L.). *Britain*.
Porcellanella triloba, (White). *Chall. Exp.*, Stn. 212.
Celebes Sea.
- ALBUNEIDÆ.**
- Albunea symnysta*, (L.). *Madras*.
- HIPPIDÆ.**
- Hippa eremita*, (L.). *Guayaquil, U.S.A.*
Remipes pacificus, Dana. *South Sea*.
R. scutellatus, (Fabr.). *Cape Verde Islands*,
"Talisman," 1883, 10.30 m.
St. Vincent, Chall. Exp.
- LITHODIDÆ.**
- Acantholithus hystrix*, (de Haan). *Japan*.
Cryptolithodes sitchensis, Brandt. *San Francisco*,
Vancouver Island.

Dermaturus Mandtii, Brandt.	<i>Behring Sea.</i>
Hapalogaster Mertensii, Brandt.	<i>Vancouver Island.</i>
H. grebnitzkii, Schalfeew.	<i>Behring Sea.</i>
H. dentatus, (de Haan).	<i>Japan.</i>
Lithodes antarcticus, Jacq. et Lucas.	<i>Strait of Magellan.</i>
L. maia, (L.)	<i>Britain.</i>
Lomis hirta, Lamk.	<i>Australia ?</i>
Lopholithodes Mandtii, Brandt. (Echinocerus cibarius, White).	<i>Vancouver Island.</i>
Paralithodes camtschatica, (Tilesius).	<i>Sea of Okhotsk.</i>
Phyllolithodes papillosus, Brandt.	<i>Vancouver Island.</i>

CÆNOBITIDÆ.

Birgus latro, (L.).	<i>Locality ?</i>
Cænobita compressa, M.-E.	<i>South Sea.</i>
C. perlata, M.-E.	<i>Samoa.</i>
C. rugosa, M.-E.	<i>Sumatra, Tahiti,</i> <i>Admiralty Ids.</i>
C. spinosa, M.-E.	<i>Samoa.</i>

PAGURIDÆ.

Anapagurus bicorniger, A.M.-E. & Bouv. (<i>Co-type</i>).	<i>"Talisman."</i>
A. curvidactylus, Chev. & Bouv. (<i>Co-type</i>).	<i>Goree, Senegal.</i>
A. hyndmanni, (Thomps.).	<i>Britain.</i>
A. lævis, (Thomps.).	<i>Britain, Norway.</i> <i>Bonifacio, "Travailleur,"</i> <i>50-60 m.</i>
Aniculus typicus, Dana.	<i>Fiji.</i>
Calcinus herbstii, de Man.	<i>South Sea.</i>
C. elegans, (M.-E.).	<i>South Sea.</i>
C. latens, (Rand.).	<i>Rarotonga.</i>
C. ornatus, Roux.	<i>Oran.</i>
C. chilensis, (M.-E.).	<i>Lower California.</i>
Catapaguroides microps, A.M.-E. & Bouv. (<i>Co-type</i>).	<i>Azores,</i> <i>"Talisman," 1257 m.</i>
Catapagurus gracilis, A.M.-E. & Bouv. (<i>Co-type</i>).	<i>Newport, U.S.A.,</i> <i>115 fms.</i>
C. Sharrei, A.M.-E.	<i>Newport, U.S.A.</i>
Clibanarius corallinus (M.-E.).	<i>Howland Island.</i>

Diogenes pugilator, Roux.	Majorca.
D. pugilator, Roux, <i>var. intermedius</i> , Bouv. (<i>Co-type</i>).	Dakar.
D. custos, (Fabr.).	Madras.
Eupagurus alaskensis, Benedict.	Vancouver Island.
	Alaska.
E. aleuticus, Benedict.	Aleutian Islands.
E. anachoretus (Risso).	Mediterranean.
E. bernhardus (L.).	Britain.
E. Brandti, Benedict.	Aleutian Islands.
E. capillatus, Benedict.	Alaska, Vancouver Island.
E. carneus, Pocock.	Gijon, "Travailleur."
E. comptus, (White).	Falkland Islands.
E. confragosus, Benedict.	Alaska.
E. cuanensis, (Thomps.).	Britain.
E. dalli, Benedict.	Aleutian Islands.
E. excavatus, (Herbst).	S.W. Ireland.
" " <i>var. meticulous</i> (Roux).	St. Vincent, Chall. Exp.
E. granosimanus, Stps.	Vancouver Id., Puget Sound.
E. hirsutiuseculus, (Dana).	Alaska.
E. kennerlyi, Stps.	Vancouver Id.
E. kirkii, Filhol. (<i>Co-type</i>).	Cook Strait.
E. middendorffii, Brandt.	Vancouver Id., Puget Sound.
E. munitus, Benedict.	Behring Sea.
E. ochotensis, Brandt.	Puget Sound, Vancouver Id.
E. politus, Smith.	Martha's Vineyard, U.S.A.
E. pollicaris, Stps.	New England.
E. prideaux, (Leach).	Britain, Norway.
E. pubescens (Kr.). (Incl. <i>E. kröyeri</i>).	Britain, Norway, Greenland, U.S.A.
E. pulchellus, A.M.-E. & Bouv. (<i>Co-type</i>).	St. Vincent, " Talisman," 70 m.
E. sculptimanus, Lucas.	I. Deserta, " Travailleur," 100 m.
E. splendescens, (Owen).	N. Pacific.
E. Tanneri, Benedict.	Alaska.

<i>E. tenuimanus</i> , (Dana).	<i>Vancouver Id., Puget Sound, Unalaska.</i>
<i>E. Thomsoni</i> , Filhol.	<i>Cook Strait.</i>
<i>E. trigonocheirus</i> , Stps.	<i>Alaska.</i>
<i>E. variabilis</i> , A.M.-E. & Bouv.	<i>S.W. Ireland.</i> <i>Morocco, "Talisman," 600 m.</i> <i>Bay of Biscay, "Travailleur," 160 m.</i>
<i>Nematopagurus longicornis</i> , A.M.-E. & Bouv. (<i>Co-types</i>).	<i>"Talisman,"</i> <i>"Travailleur," 150 m.</i>
<i>Ostraconotus spatulifer</i> , A.M.-E. (<i>Co-type</i>).	<i>West Indies, "Blake."</i>
<i>Paguristes maculatus</i> (Risso).	<i>Mediterranean.</i>
<i>P. turgidus</i> , Stps.	<i>Vancouver Id.</i>
<i>P. oculatus</i> , Fabr., <i>var. brunneo-pictus</i> , A.M.-E. & Bouv.	<i>I. Deserta,</i> <i>"Travailleur," 130 m.</i>
<i>P. puniceus</i> , Hdsn.	<i>Bay of Bengal,</i> <i>115-250 f.</i>
<i>Pagurus</i> <i>P. punctulatus</i> , Olivier.	<i>South Sea.</i>
<i>P. deformis</i> , M.-E.	<i>South Sea.</i>
<i>P. guttatus</i> ,	<i>South Sea.</i>
<i>P. arrosor</i> , Herbst. (<i>P. striatus</i> , Latr.).	<i>Mediterranean.</i> <i>Cape Verde Islands,</i> <i>"Talisman," 75 m.</i>
<i>P. granulimanus</i> , Miers.	<i>Dakar.</i>
<i>P. calidus</i> , Roux.	<i>Cape Bojador,</i> <i>Cape Verde Islands,</i> <i>"Talisman," 399 m.</i>
<i>Parapagurus dimorphus</i> , (Studer).	<i>Chall. Exp., Stn. 142.</i>
<i>P. pilosimanus</i> , Smith.	<i>Martha's Vineyard, U.S.A.</i> <i>"Talisman," 2075-2101 m.</i> <i>Cape Comorin, 836 f.</i>
<i>P. pilosimanus, var. abyssorum</i> , Hend. (A.M.-E.).	<i>Azores, "Talisman," 4165 m.</i> <i>Bermuda, Chall. Exp., 1600 f.</i>
<i>Pylopagurus discoidalis</i> , A.M.-E. (<i>Co-type</i>).	<i>West Indies,</i> <i>"Blake," 101 f.</i>
<i>Spiropagurus spiriger</i> , (De Haan).	<i>Madras.</i>
<i>Sympagurus bicristatus</i> , A.M.-E.	<i>Cape Verde Ids., &c.,</i> <i>"Talisman," 499-1109 m.</i>
<i>S. gracilipes</i> , A.M.-E.	<i>Cape Verde Ids., &c.,</i> <i>"Talisman," 640 m.</i>
<i>S. monstrosus</i> , Alc.	<i>Bay of Bengal,</i> <i>145-250 f.</i>
<i>S. ruticheles</i> , A.M.-E.	<i>Azores, "Talisman,"</i> <i>960 m.</i>
<i>Troglopagurus Jousseumei</i> , Bouv. (<i>Co-type</i>).	<i>Djiboutil.</i>

CALLIANASSIDÆ.

Callianassa subterranea, (Mont.).	<i>Naples, Jersey.</i>
<i>C. californiensis</i> , Dana.	<i>Vancouver Id.</i>
<i>C. gigas</i> , Dana.	<i>Puget Sound.</i>
Upogebia littoralis, (Risso).	<i>Roscoff.</i>
<i>U. pugettensis</i> , Dana.	<i>Vancouver Id., Sitka,</i> <i>Puget Sound.</i>
Jaxea nocturna, Nardo, (Trachelifer-larvæ).	<i>Firth of Clyde.</i>

THALASSINIDÆ.

Thalassina anomala, (Hbst.).	<i>Borneo.</i>
------------------------------	----------------

AXIIDÆ.

Axius stirynchus, Leach.	<i>Jersey.</i>
Eiconaxius farreæ, Ortm.	<i>Japan.</i>
Calocaris Macandreeæ, Bell.	<i>Britain.</i>

ASTACIDÆ.

Astacus leptodactylus, Eschsch.	<i>Danube.</i>
<i>A. pallipes</i> , Lereb.	<i>Loc. ?</i>
<i>A. astacus</i> , (L.).	<i>Loc. ?</i>
<i>A. leniusculus</i> , Dana.	<i>Vancouver Id.</i>
<i>A. (Cambaroides) japonicus</i> , De Haan.	<i>Hakodate, Japan.</i>
Cambarus pellucidus, (Tellkampf).	<i>Mammoth Cave,</i> <i>Kentucky.</i>
<i>C. bartonii</i> , (Fabr.).	<i>U.S.A.</i>

PARASTACIDÆ.

Astacopsis serratus, (Shaw).	<i>Australia.</i>
Cheraps bicarinatus, (Gray).	<i>Melbourne.</i>
Engæus fossor, Erichson.	<i>Gippsland, Victoria.</i>
Paranephrops zealandicus, (White).	<i>New Zealand.</i>

HOMARIDÆ.

Homarus gammarus, (L.).	<i>Britain.</i>
Nephrops norvegicus, (L.).	<i>Britain, Norway.</i>
Nephropsis carpenteri, W.-M.	<i>Bay of Bengal, 193 f.</i>
<i>N. stewarti</i> , W.-M.	<i>Travancore, 360 f.</i>
<i>N. atlantica</i> , Norman.	<i>"Triton," St. x.,</i> <i>516 f.</i>

SCYLLARIDÆ.

Scyllarus latus, Latr.	<i>Mediterranean.</i>
Arctus ursus, Dana.	<i>Mediterranean.</i>
Ibacus antarcticus, (Rumph.).	<i>Virgin Ids., Japan, South Seas.</i>
I. incisus, (Pér.).	<i>Loc.?</i>
Thenus orientalis, (Fabr.).	<i>India.</i>

PALINURIDÆ.

Palinurus vulgaris, Latr.	<i>Britain.</i>
Do. do. Phyllosoma-larvæ.	<i>Naples.</i>
Panulirus japonicus, (Ph. Sicb.).	<i>Japan.</i>
Linuparus trigonus, (De Haan).	<i>Japan.</i>
Jasus edwardsii, (Hutton).	<i>New Zealand.</i>

LARVÆ.

Phyllosoma stylicornis, M.-E.	<i>Atlantic.</i>
P. Freycinetii, Guér.	<i>Atlantic.</i>

ERYONIDÆ.

Pentacheles phosphorus, Alc.	<i>Laccadive Sea, 696 f.</i>
------------------------------	------------------------------

STENOPIIDÆ.

Spongicola venusta, De Haan.	<i>Philippines.</i>
------------------------------	---------------------

GNATHOPHYLLIDÆ.

Gnathophyllum elegans, (Risso).	<i>Algiers.</i>
---------------------------------	-----------------

CRANGONIDÆ.

Crangon vulgaris, (L.).	<i>Britain, New England.</i>
C. Allmanni, Kinahan.	<i>Britain.</i>
C. affinis, De Haan.	<i>Puget Sound, Vancouver Id.</i>
C. franciscorum, Stps.	<i>Puget Sound.</i>
Sclerocrangon boreas, (Phipps).	<i>Davis Straits.</i>
S. ferox, G. O. Sars.	<i>Davis Straits.</i>
S. munitus, Dana.	<i>Vancouver Id, Puget Sound.</i>

Pontophilus spinosus, Leach.	<i>Britain.</i>
<i>P. norvegicus</i> , (Sars).	<i>Lofoten Ids, 200-300 f.</i>
Egeon cataphractus, Olivi.	<i>Mediterranean.</i>
<i>E. fasciatus</i> , Risso.	<i>Britain.</i>
Cheraphilus trispinosus, (Hailstone).	<i>Britain.</i>
<i>C. echinulentus</i> , Sars.	<i>Britain.</i>
<i>C. neglectus</i> , G. O. Sars.	<i>Britain.</i>
Paracrangon echinatus, Dana.	<i>Vancouver Id.,</i> <i>Puget Sound.</i>
Sabinea septemcarinata, (Sabine).	<i>Davis Straits,</i> <i>Barents Sea.</i>
Nectocrangon lar, (Owen).	<i>Davis Straits.</i>
<i>N. alaskensis</i> , Kingsley.	<i>Vancouver Id.</i>

NIKIDÆ.

Nika edulis, Risso.	<i>Britain,</i> <i>Mediterranean.</i>
Glyphocrangon investigatoris, W.-M.	<i>Bay of Bengal, 272 f.</i>

PALÆMONIDÆ.

Palæmon carcinus, Fabr.	<i>Saigon, Hong Kong.</i>
<i>P. grandimanus</i> , Rand.	<i>Honolulu, Chall. Exp.</i>
<i>P. lamarrei</i> , M.-E.	<i>Surinam, Guayaquil.</i>
<i>P. lar</i> , Fabr.	<i>Samoa, Mauritius.</i>
<i>P. macrobrachion</i> , Herklots (?).	<i>Sierra Leone.</i>
<i>P. moorei</i> , Calm.	<i>Tanganyika.</i>
<i>P. nipponensis</i> , De Haan.	<i>Japan.</i>
Leander affinis, M.-E.	<i>Lyttleton, N.Z.</i>
<i>L. natator</i> , (M.-E.).	<i>Loc.?</i>
<i>L. serratus</i> , (Penn.).	<i>Britain.</i>
<i>L. squilla</i> , (L.).	<i>Britain.</i>
<i>L. Treillianus</i> , (Risso).	<i>Mediterranean.</i>
<i>L. xiphias</i> , (Risso).	<i>Mediterranean.</i>
Palæmonetes varians, (Leach).	<i>Britain.</i>
<i>P. vulgaris</i> , (Say).	<i>Narragansett Bay.</i>

PONTONIIDÆ.

Pontonia meleagrinae, Peters.	<i>N.W. Australia.</i>
Harpilius lutescens, Dana.	<i>Samoa.</i>
Anchistia scripta, (Risso).	<i>Mediterranean.</i>

LATREUTIDÆ.

Lysmata seticaudata, Risso. *Mediterranean.*

HIPPOLYTIIDÆ.

Caridion Gordoni, (Sp. Bate). *Britain.*
Hippolyte varians, Leach. *Britain.*
H. viridis, Otto. *Jersey.*
H. fascigera, Gosse. *Salcombe.*
H. (Spirontocaris) lamellicornis, Dana. *Vancouver Id.*
H. spinus, Sowerby. *Labrador.*
H. securifrons, Norman. *Britain.*
H. Gaimardii, (M.-E.). *Britain, Davis Straits,*
Barents Sea.
H. gaimardii, (M.-E.), *form gibba*, Kr. *Davis Straits,*
Labrador, Barents Sea.
H. Cranchii, (Leach). *Britain.*
H. pusiola, Kr. *Britain.*
H. grœnlandica, (Fabr.). *Davis Straits, Behring Sea,*
Petropaulovskii.
H. Fabricii, Kr. *Davis Straits.*
H. macilenta, Kr. *Labrador,*
Newfoundland.
H. phippisii, Kr. *Labrador,*
Davis Straits.
H. phippisii, form turgida, Kr. *Davis Straits, Lofoten.*
H. polaris, Sabine. *Norway,*
Davis Straits.
H. polaris, form borealis, Kr. *Davis Straits.*
H. stylus, Stps. *Puget Sound.*
Bythocaris payeri, (Heller). *"Triton," 60° N.,*
6° W., 608 f.

RHYNCHOCINETIDÆ.

Rhynchocinetes typus, M.E. *Valparaiso.*

PANDALIDÆ.

Pandalus Montagu, Leach. *Britain.*
P. propinquus, G. O. Sars. *Norway, Britain.*
P. bonnieri, (Caullery). *Britain.*
P. borealis, Kr. *Norway, N. Atlantic.*

P. Danæ, Stps.	Vancouver Id., Puget Sound.
P. leptocerus, Smith.	N. Atlantic.
P. magnoculis, Sp. Bate.	Chall. Exp., St. 166, 275 f.
Pandalina brevirostris, (Rathke).	Britain, Norway.
Heterocarpus gibbosus, Sp. Bate.	Andaman Sea, 370-419 f.

ALPHEIDÆ.

Alpheus megacheles, Hailstone.	Jersey.
A. cavimanus, Heller.	Algiers.
A. dentipes, Guér.	Naples.
A. edwardsi, Aud.	Torres Straits, Madras.
A. spongiarum, Coutière.	Torres Straits.
A. malleodigitus, Sp. Bate.	„
A. ventrosus, M.-E.	„
A. gracilipes, Stps.	„
A. paragracilis, Coutière.	„
A. pachychirus, Stps.	„
A. frontalis, M.-E.	„
Synalpheus biunguiculatus, (Stps.), de Man.	„
S. neomeris, de Man.	„
S. neomeris, var. Pococki, Coutière.	„
S. lævimanus, var. Haddoni, Coutière.	„
Athanas nitescens, Leach.	Britain, Algiers.

ATYIDÆ.

Xiphocaris compressa, (De Haan).	Tokyo.
X. fluviatilis, (G. M. Thomson).*	New Zealand.
Atyaephyra desmarestii, (Millet).	France, River Seybouse, Algiers.†
Caridina typus, M.-E.	Natal.
C. longirostris, M.-E. (Co-types).	Oran.
C. Wyckii, (Hickson), (Co-types).	Celebes.
C. americana, Guér.	Venezuela.
Limnocaridina tanganyikæ, Calm.	Tanganyika.
Atyoidea bisulcata, Randall.	Ponapé.

* *Leander fluviatilis*, G. M. Thomson, Trans. N. Z., Inst. XI., p. 231, Pl. X., fig. A2. 1879.

† These specimens, received unnamed from M. E. Chevreux, appear to constitute the first record of this species from Africa.

<i>Atya scabra</i> , Leach.	<i>Jamaica</i> .
<i>A. gabonensis</i> , Giebel.	<i>Loc. ?</i>
<i>A. spinipes</i> , Newport.	<i>Upolu</i> .
ACANTHEPHYRIDÆ.	
<i>Campylonotus semistriatus</i> , Sp. Bate.	<i>Chall. Exp., St. 307.</i>
<i>Hymenodora glacialis</i> , (Buchholz).	<i>"Triton," St. ix.,</i> <i>608 f.</i>
<i>Nematocarcinus ensiferus</i> , Smith.	<i>U. S. A.</i>
<i>N. exilis</i> , (Sp. B.).	<i>S. W. Ireland, 750 f.</i>
<i>N. undulatus</i> , Sp. Bate.	<i>Chall. Exp.,</i> <i>Philippines.</i>
PASIPHÆIDÆ.	
<i>Pasiphæa sivado</i> , M.-E.	<i>Britain.</i>
SERGESTIDÆ.	
<i>Leucifer typus</i> , (Thomps.).	<i>Atlantic.</i>
<i>Sergestes arcticus</i> , Kr. (Mastigopus stage = <i>S. Rinkii</i> , Kr.).	<i>N. Atlantic,</i> <i>58° N., 19° W.</i>
<i>S. atlanticus</i> , M.-E., (<i>Various Stages</i>).	<i>Atlantic.</i>
<i>S. cornutus</i> , Kr.	<i>Atlantic, near Equator.</i>
<i>S. edwardsii</i> , Kr.	<i>" "</i>
<i>S. vigilax</i> , Stps., (Mastigopus stage).	<i>Atlantic,</i> <i>17° N., 51° W.</i>
PENÆIDÆ.	
<i>Artemesia longinaris</i> , Sp. Bate.	<i>Monte Video,</i> <i>Chall. Exp.</i>
<i>Benthesicymnus altus</i> , Sp. Bate.	<i>Kermadec Ids.,</i> <i>Chall. Exp.</i>
<i>Cerataspis monstrosa</i> , Gray.	<i>Loc. ?</i>
<i>Penæus affinis</i> , M.-E.	<i>Singapore.</i>
<i>P. anchoralis</i> , Sp. Bate.	<i>Japan.</i>
<i>P. caramote</i> , Risso.	<i>Mediterranean.</i>
<i>P. macleayi</i> , Haswell.	<i>Port Jackson.</i>
<i>P. monodon</i> , Fabr.	<i>Madras.</i>
<i>P. velutinus</i> , Dana.	<i>Japan.</i>
<i>Sicyonia sculpta</i> , M.-E.	<i>Algiers.</i>

MALACOSTRACA.—SCHIZOPODA.

ANASPIDIDÆ.

Anaspides tasmaniæ, G. M. Thomson. *Tasmania.*

LOPHOGASTRIDÆ.

Lophogaster typicus, Sars. *Porcupine Exp., St. 11,*
S. W. Ireland.

EUCOPIIDÆ.

Eucopia australis, Dana. *Behring Sea, 660 f.*

EUPHAUSIIDÆ.

Boreophausia raschii, (Sars.). *E. and W. Coasts,*
Scotland.

B. inermis, (Kr.). *Greenland.*

Euphausia latifrons, G. O. Sars. *Bay of Bengal.*

E. murrayi, G. O. Sars. *Antarctic Ocean.*

E. splendens, Dana. „

E. superba, Dana. „

Nematoscelis megalops, G. O. Sars. *E. Coast, Scotland.*

Nyctiphanes norvegica, (Sars). *W. Coast, Scotland.*

N. couchii, (Bell). *Plymouth, Polperro,*

Firth of Tay.

Thysanoëssa longicaudata, (Kr.). *Faroe Channel.*

T. neglecta, (Kr.). *Firth of Tay.*

Thysanopoda tricuspadata, M.-E. *Indian Ocean.*

MYSIDÆ.

Anchialus agilis, G. O. Sars. *Plymouth, Jersey.*

Boreomysis nobilis, G. O. Sars. *Greenland.*

B. scyphops, G. O. Sars. *Behring Sea, 660 f.*

Dasymysis longicornis, (M.-E.). *Naples.*

Erythrops abyssorum, G. O. Sars. *E. Finmark.*

<i>E. erythropthalmus</i> , (Goës).	<i>E. Finmark.</i>
<i>E. microphthalmus</i> , G. O. Sars.	<i>Labrador, 100 f.</i>
<i>E. serrata</i> , G. O. Sars.	<i>Firth of Clyde,</i> <i>Firth of Forth, Norway.</i>
<i>E. elegans</i> , G. O. Sars.	<i>Plymouth.</i>
<i>Gastrosaccus spinifer</i> , (Goës).	<i>E. Coast, Scotland.</i>
<i>G. sanctus</i> , (v. Ben.).	<i>Plymouth.</i>
<i>Haplostylus Normanni</i> , (G. O. Sars).	”
<i>Hemimysis Lamornae</i> , (Couch).	<i>Naples, E. and W.</i> <i>Coast, Scotland.</i>
<i>Heteromysis formosa</i> , S. I. Smith.	<i>Britain.</i>
<i>Leptomysis lingvura</i> , G. O. Sars.	<i>Britain.</i>
<i>L. mediterranea</i> , G. O. Sars.	<i>Naples.</i>
<i>Macropsis Slabberi</i> , (v. Ben.).	<i>Firth of Tay.</i>
<i>Mysidopsis angusta</i> , G. O. Sars.	<i>Firth of Clyde.</i>
<i>M. didelphys</i> , (Norman).	<i>Firth of Forth.</i>
<i>M. gibbosa</i> , G. O. Sars,	<i>Firth of Clyde.</i>
<i>Mysis</i> (?) <i>americana</i> , S. I. Smith.	<i>U. S. A.</i>
<i>M. mixta</i> , Lillj.	<i>Davis Straits, Norway.</i>
<i>M. oculata</i> , (Fabr.).	”
<i>M. relicta</i> , Lovén.	<i>Lake Vettern, Baltic</i> <i>Sea, Lough Neagh.</i>
<i>Neomysis vulgaris</i> , (V. Thompson).	<i>Britain.</i>
<i>Parerythrops obesa</i> , G. O. Sars.	<i>Norway.</i>
<i>Praunus flexuosus</i> , (Müller).	<i>Britain.</i>
<i>P. inermis</i> , (Rathke).	<i>Britain, Norway.</i>
<i>P. neglectus</i> , (G. O. Sars). (?)	”
<i>Pseudomma roseum</i> , G. O. Sars.	<i>Norway, 300 f.</i>
<i>Schistomysis arenosa</i> , (G. O. Sars).	<i>Plymouth.</i>
<i>S. Helleri</i> , (G. O. Sars).	<i>Guernsey.</i>
<i>S. ornata</i> , (G. O. Sars).	<i>Firth of Forth.</i>
<i>S. parkeri</i> , Norman.	<i>Plymouth.</i>
<i>S. spiritus</i> , Norman.	<i>Jersey, Plymouth,</i> <i>Firth of Tay.</i>
<i>Siriella armata</i> , (M.-E.).	<i>Firth of Tay.</i>
<i>S. gracilis</i> , Dana.	<i>Bay of Bengal.</i>
<i>S. jaltensis</i> , Czern.	<i>E. Coast, Scotland,</i> <i>Plymouth, Adriatic.</i>
<i>S. norvegica</i> , G. O. Sars.	<i>Norway, Jersey,</i> <i>Mediterranean.</i>
<i>S. Thompsoni</i> , M.-E.	<i>Atlantic.</i>
<i>Stilomysis grandis</i> , (Goës).	<i>Labrador, 100 f.</i>

MALACOSTRACA—CUMACEA.

Cuma Edwardsii, (Mont.).	<i>Britain.</i>
C. pulchella, G. O. Sars.	<i>Firth of Forth.</i>
Iphinoë trispinosa, (Goodsir).	<i>Britain.</i>
Cumopsis Edwardsii, (Sp. Bate).	<i>Firth of Tay.</i>
Leucon nasicus, Kr.	<i>Norway, Davis Straits.</i>
Eudorellopsis deformis, (Kr.).	<i>E. Coast, Scotland.</i>
Eudorella truncatula, (Sp. Bate).	<i>Davis Straits.</i>
Nannastacus unguiculatus, (Sp. Bate).	<i>Jersey.</i>
Cumella pygmæa, G. O. Sars.	<i>Jersey.</i>
Campylaspis costata, G. O. Sars.	<i>Fair Isle.</i>
C. rubicunda, Lillj.	<i>Firth of Clyde,</i> <i>Fair Isle.</i>
C. carinata, Hansen.	<i>Labrador.</i>
Pseudocuma longicornis, (Sp. Bate).	<i>Britain.</i>
P. similis, G. O. Sars.	<i>Fair Isle.</i>
Petalosarsia declivis, (G. O. Sars).	<i>Firth of Forth,</i> <i>Fair Isle.</i>
Lamprops fuscata, G. O. Sars.	<i>Davis Straits.</i>
L. fasciata, G. O. Sars.	<i>Firth of Clyde,</i> <i>Colwyn Bay.</i>
L. cristata, G. O. Sars.	<i>Lofoten, 120-300 f.</i>
Hemilamprops rosea, (Norm.).	<i>Lofoten.</i>
Diastylis Rathkii, Kr.	<i>Davis Straits,</i> <i>Firth of Tay.</i>
D. Goodsiri, Bell.	<i>Davis Straits.</i>
D. scorpioides, (Lep.).	„
D. spinulosa, Heller.	„
D. spinosa, Norm.	<i>Firth of Tay,</i> <i>Colwyn Bay.</i>
D. cornuta, Boeck.	<i>Norway, Fair Isle.</i>
D. serrata, G. O. Sars.	<i>Lofoten.</i>
D. tumida, Lillj.	<i>Norway.</i>
D. lucifera, Kr.	„
Diastylopsis resima, (Kr.).	<i>Fair Isle.</i>
Leptostylis ampullacea, Lillj.	<i>Denmark.</i>
L. villosa, G. O. Sars.	<i>Britain.</i>

MALACOSTRACA.—ISOPODA.

APSEUDIDÆ.

Apseudes latreillei, (M.-E.).	<i>Salcombe.</i>
Leiopus leptodactylus, Beddard.	" <i>Challenger</i> ," <i>St. 78.</i>

TANAIDÆ.

Tanais tomentosus, Kr.	<i>Britain.</i>
T. willemoesii, Studer.	<i>Kerguelen,</i> " <i>Challenger</i> ."
Pseudotanais forcipatus, (Lillj.).	<i>Moray Firth.</i>
Leptognathia brevimanus, (Lillj.).	<i>Aberdeen.</i>
L. longiremis, (Lillj.).	<i>Moray Firth.</i>

ANTHURIDÆ.

Anthura gracilis, (Mont.).	<i>Torbay.</i>
Calathura brachiata, (Stps.).	<i>Davis Straits.</i>
Cruregens fontinalis, Chilton.	<i>Eyreton, N.Z.</i>

GNATHIIDÆ.

Gnathia clongata, (Kr.)	<i>Kara Sea.</i>
G. maxillaris, (Mont.).	<i>Firth of Clyde.</i>

CYMOTHOIDÆ.

Cirolana borealis, (Lillj.).	<i>Britain.</i>
C. cranchii, Leach.	"
C. elongata, M.-E.	<i>Indo-Pacific Region.</i>
Conilera cylindræca, (Mont.).	<i>Britain.</i>
Eurydice pulchra, Leach.	<i>Britain.</i>
E. spinigera, Hansen.	<i>Loc.?</i>
Æga artica, Lütke.	<i>Greenland.</i>
Æ. crenulata, Lütke.	<i>Iceland, Scotland.</i>
Æ. deshayesana, M.-E.	" <i>Challenger</i> ," <i>Fayal.</i>
Æ. magnifica, Dana.	" <i>Challenger</i> ," <i>St. 313.</i>

Æ. novæ-zealandiæ, Dana.	<i>New Zealand.</i>
Æ. rosacea, (Risso).	<i>Loc. ?</i>
Æ. psora, (L.).	<i>Davis Straits,</i> <i>Newfoundland.</i>
Æ. ventrosa, G. O. Sars.	<i>Norway.</i>
Æ. spongiophila, Semper.	<i>"Challenger," St. 209.</i>
Rocinela belliceps, Stps.	<i>Unalaska, Robben Id.,</i> <i>Behring Sea.</i>
Cymothoa œstrum, (L.).	<i>St. Thomas.</i>
Livoneca vulgaris, Stps.	<i>Puget Sound.</i>
Anilocra capensis, M.-E.	<i>Cape Town,</i> <i>"Challenger."</i>

SEROLIDÆ.

Serolis antarctica, Beddard.	<i>"Challenger,"</i> <i>Stns. 122 & 146.</i>
S. bromleyana, W.-S.	<i>"Challenger,"</i> <i>Stns. 168 & 169.</i>
S. cornuta, Studer.	<i>"Challenger,"</i> <i>Kerguelen.</i>
S. latifrons, Studer.	„ „
S. minuta, Beddard.	„ <i>St. 161.</i>
S. næra, Beddard.	„ <i>St. 320.</i>
S. schythei, Ltk.	<i>"Challenger," Gulf of Penas,</i> <i>Straits of Magellan,</i> <i>St. 314.</i>
S. septemcarinata, Miers.	<i>"Challenger," Kerguelen.</i> <i>Prince Edward Id.</i>

SPHÆROMIDÆ.

Sphæroma curtum, Leach.	<i>Britain.</i>
S. rugicauda, Leach.	„
S. serratum, (Fabr.).	„
Exosphaeroma gigas, (Leach).	<i>"Challenger," Kerguelen,</i> <i>Falkland Ids.</i>
E. gigas, var. lanceolatum, (White).	<i>Falkland Ids.</i>
Næsa bidentata, (Adams).	<i>Firth of Clyde, W.</i> <i>Ireland, S. England.</i>
Cymodoce truncata, Leach.	<i>Britain.</i>
Campeopea hirsuta, (Mont.)	„
Cycloidura venosa, Stebb.	<i>Sydney.</i>

<i>Isocladus armatus</i> , (M.-E.).	<i>New Zealand.</i>
<i>I. spiniger</i> , (Dana).	"
<i>Ceratocephalus grayanus</i> , Woodward.	" <i>Challenger</i> ," <i>St. 161.</i>
<i>Amphoroidea australis</i> , Dana.	<i>Sydney.</i>
<i>Cassidina emarginata</i> , Guér.	<i>Falkland Ids.</i>
<i>Haswellia carnea</i> , (Hasw.).	<i>Port Jackson.</i>
<i>Plakarthrium typicum</i> , Chilton.	<i>New Zealand.</i>

LIMNORIIDÆ.

<i>Limnoria lignorum</i> , (Rathke).	<i>Britain, Puget Sound.</i>
<i>L. segnis</i> , Chilton.	<i>New Zealand.</i>

ARCTURIDÆ.

<i>Arcturus baffini</i> , (Sabine).	<i>Davis Straits.</i>
<i>A. tuberosus</i> , G. O. Sars.	"
<i>A. furcatus</i> , Studer.	" <i>Challenger</i> ,"
	<i>Kerguelen, 120 f.</i>
<i>Astacilla longicornis</i> , (Sow.).	<i>Britain.</i>

IDOTEIDÆ.

<i>Glyptonotus entomon</i> , (L.).	<i>Lake Wetter.</i>
<i>G. Sabini</i> , Kr.	<i>Davis Straits.</i>
<i>G. sibiricus</i> , (Birula).	<i>Kara Sea.</i>
<i>Arcturoides cornutus</i> , Stud.	" <i>Challenger</i> ,"
	<i>Marion Id., 310 f.</i>
<i>Idotea acuminata</i> , (Leach).	<i>Britain.</i>
<i>I. baltica</i> , (Pallas).	"
<i>I. emarginata</i> , Fabr.	"
<i>I. lacustris</i> , G. M. Thomson.	<i>New Zealand.</i>
<i>I. linearis</i> , (L.).	<i>Britain.</i>
<i>I. ochotensis</i> , Brandt.	<i>Pribyloff Ids.,</i>
	<i>Castries Bay.</i>
<i>I. prismatica</i> , (Risso).	<i>Britain.</i>
<i>I. resecata</i> , Stps.	<i>Unalaska.</i>
<i>I. Wosnessenskii</i> , Brandt.	<i>Puget Sound, Sitka,</i>
	<i>Unalaska.</i>

ASELLIDÆ.

Asellus aquaticus, (L.).	<i>Britain.</i>
<i>A. communis</i> , Say.	<i>Indiana, U.S.A.</i>
Janira maculosa, Leach.	<i>Britain.</i>
Jais pubescens, Dana.	<i>"Challenger," Kerguelen, Falkland Ids.</i>
Jaera albifrons, Leach.	<i>Britain.</i>
Stenetrium armatum, Haswell.	<i>Port Jackson.</i>
Munna Krøyeri, Goodsir.	<i>Britain.</i>
<i>M. neozelanica</i> , Chilton.	<i>New Zealand.</i>

MUNNOPSISIDÆ.

Eurycope gigantea, G. O. Sars.	<i>Kara Sea, "Knight Errant," St. viii., 540 f.</i>
<i>E. Sarsi</i> , Beddard.	<i>"Challenger," St. 146, 1375 f.</i>
Munnopsis typica, Sars.	<i>Davis Straits.</i>

PHREATOICIDÆ.

Phreatoicus australis, Chilton.	<i>Mt. Kosciusko, (6000 ft.), Australia.</i>
<i>P. typicus</i> , Chilton.	<i>Eyreton, New Zealand</i>

MICRONISCIDÆ

Microniscus sp.?	<i>Firth of Tay.</i>
------------------	----------------------

DAJIDÆ.

Dajus mysidis, Kr.	<i>Davis Straits.</i>
--------------------	-----------------------

PHRYXIDÆ.

Athelges paguri, Rathke.	<i>Firth of Clyde.</i>
Phryxus abdominalis, Kr.	<i>E. and W. Coast, Scotland.</i>
Bopyrus squillarum, Latr.	<i>Britain.</i>
Bopyroides hippolytes, Kr.	<i>Davis Straits.</i>

Grapsicepon Edwardsi, G. and B.	<i>Sargasso Sea.</i>
Gyge branchialis, C. and P.	<i>Loc.?</i>
Phyllodurus abdominalis, Stps.	<i>Puget Sound.</i>
Pleurocrypta hendersoni, G. and B.	<i>Firth of Clyde.</i>
Pseudione Giardi, Calm., (<i>Larvæ</i>).	<i>Puget Sound.</i>

ONISCIDÆ.

Armadillo officinalis, Dana.	<i>Toulon, Perpignan.</i>
<i>A. officinalis, v. syriacus, A. Dollf.</i>	<i>Syria.</i>
<i>A. grossus, B. L.</i>	<i>Rockhampton,</i> <i>Australia.</i>
<i>A. clausus, B. L.</i>	<i>Venezuela.</i>
<i>A. murinus, Brandt.</i>	<i>Oahu.</i>
<i>A. aculeatus, B. L.</i>	<i>W. Africa.</i>
<i>A. venustus, B. L.</i>	<i>Venezuela.</i>
<i>A. sulcatus, M.-E.</i>	<i>Algiers.</i>
<i>A. truncorum, B. L.</i>	<i>Caracas.</i>
<i>A. montivagus, B. L.</i>	<i>Upolu.</i>
<i>A. rugulosus, Miers.</i>	<i>Milford Sound, N. Z.</i>
<i>A. ambitiosus, B. L.</i>	<i>Greymouth, N. Z.</i>
<i>A. McMahoni, Chilton.</i>	<i>Marlborough, N. Z.</i>
Armadillidium Pallasii, Brandt.	<i>Monte Gargano.</i>
<i>A. frontirostre, B. L.</i>	<i>Dalmatia.</i>
<i>A. granulatum, C. v. Vogl.</i>	<i>Sassari, Provence.</i>
<i>A. assimile, B. L.</i>	<i>Lecce, Arles.</i>
<i>A. nasutum, B. L.</i>	<i>Paris.</i>
<i>A. pictum, Brandt.</i>	<i>Vosges.</i>
<i>A. depressum, Brandt.</i>	<i>Brest.</i>
<i>A. decorum, Brandt.</i>	<i>Calabria.</i>
<i>A. vulgare, M.-E.</i>	<i>Britain, Sardinia.</i>
<i>A. sulcatum, Brandt.</i>	<i>Constantine.</i>
<i>A. opacum, Koch.</i>	<i>Jura.</i>
<i>A. pustulatum, B. L.</i>	<i>Hyères.</i>
<i>A. esterelanum, A. D.</i>	<i>Esterel.</i>
<i>A. pulchellum, Zenck.</i>	<i>Denmark.</i>
<i>A. simoni, A. D.</i>	<i>Cannes.</i>
Cylisticus gracilipennis, B. L.	<i>Rome.</i>
<i>C. convexus, (De Geer).</i>	<i>Paris.</i>
Porcellio Ratzeburgi, Brandt.	<i>Tyrol.</i>
<i>P. latissimus, B. L.</i>	<i>Sassari.</i>
<i>P. platysoma, Brandt.</i>	<i>Bona.</i>

<i>P. ficulneus</i> , B. L.	<i>Syria.</i>
<i>P. echinatus</i> , Lucas.	<i>Oran.</i>
<i>P. dilatatus</i> , Latr.	<i>Ireland, France.</i>
<i>P. Hoffmannseggii</i> , Brandt.	<i>Spain.</i>
<i>P. flavocinctus</i> , B. L.	<i>Spain.</i>
<i>P. Wagneri</i> , Brandt.	<i>Oran.</i>
<i>P. ocellatus</i> , B. L.	<i>Némours.</i>
<i>P. longicauda</i> , B. L.	<i>Algiers.</i>
<i>P. ornatus</i> , M.-E.	<i>Carthage.</i>
<i>P. monticola</i> , Lereb.	<i>Spezzia, Provence.</i>
<i>P. montanus</i> , B. L.	<i>Gap.</i>
<i>P. transmutedus</i> , B. L.	<i>Algiers.</i>
<i>P. pictus</i> , Brandt.	<i>Britain,</i> <i>Montpellier, etc.</i>
<i>P. lamellatus</i> , Ulj.	<i>Bona.</i>
<i>P. scaber</i> , Latr.	<i>Britain,</i> <i>Ashburton, N. Z.</i> <i>(=P. graniger, Miers).</i>
<i>P. lævis</i> , Latr.	<i>Galway, Canary Ids., Oran,</i> <i>Cairo, Noumea.</i>
<i>P. politus</i> , Koch.	<i>Compiègne.</i>
<i>P. margine-notatus</i> , B. L.	<i>Bona.</i>
<i>P. contractus</i> , A. D.	<i>Syria.</i>
<i>P. obsoletus</i> , B. L.	<i>Adelsberg.</i>
<i>P. variabilis</i> , Lucas.	<i>Algiers.</i>
<i>Hemilepistus cristatus</i> , B. L.	<i>Persia.</i>
<i>Metoponorthus orientalis</i> , Ulj.	<i>Baku, Apscheron.</i>
<i>M. sex-fasciatus</i> , B. L.	<i>Azores.</i>
<i>M. meleagris</i> , B. L.	<i>Cannes, Bona.</i>
<i>M. pruinosis</i> , Brandt.	<i>Britain, France.</i>
<i>M. virgatus</i> , B. L.	<i>N. Orleans.</i>
<i>Rhyscotus parallelus</i> , B. L.	<i>Caracas.</i>
<i>Leptotrichus Panzerii</i> , Aud. and Sav.	<i>Bona.</i>
<i>L. ciliatus</i> , B. L.	<i>Rabat, Morocco.</i>
<i>Bathytropa Meinerti</i> , B. L.	<i>Bona.</i>
<i>Platyarthrus Hoffmannseggii</i> , Brandt.	<i>S. of England, Paris.</i>
<i>P. Schöblii</i> , B. L.	<i>Bona.</i>
<i>Oniscus asellus</i> , L.	<i>Britain,</i> <i>Norway, etc.</i>
<i>O. punctatus</i> , G. M. Thomson.	<i>New Zealand.</i>
<i>O. kenepurensis</i> , Chilton.	<i>Marlborough, N.Z.</i>
<i>Scyphoniscus waitatensis</i> , Chilton.	<i>Otago, N. Z.</i>

<i>Philougria</i> (?) <i>marina</i> , Chilton.	<i>Sydney</i> , N. S. W.
<i>Philoscia muscorum</i> , Scopoli.	<i>Britain</i> .
<i>P. pulchella</i> , B. L.	<i>Calabria</i> .
<i>P. cellaria</i> , A. D.	<i>Caves de Beaume</i> .
<i>P. Couchii</i> , Kinahan.	<i>Marseilles</i> .
<i>P. debilis</i> , B.L.	<i>Caracas</i> .
<i>P. pubescens</i> , Dana.	<i>Auckland</i> , N. Z.
<i>Alloniscus Borelli</i> , A. D.	<i>San Lorenzo</i> ,
	<i>Argentine</i> .
<i>A. quisquiliarum</i> , B. L.	<i>Venezuela</i> .
<i>Actœcia euchroa</i> , Dana.	<i>Dunedin</i> , N. Z.
<i>A. ophiensis</i> , Chilton.	<i>Timaru</i> , N. Z.
<i>Scyphax ornatus</i> , Dana.	<i>Wellington Hd.</i> , N. Z.

LIGIIDÆ.

<i>Trichoniscus pusillus</i> , Brandt.	<i>Britain, France, etc.</i>
<i>T. roseus</i> , Koch.	<i>Paris, Torquay</i> .
<i>T. vividus</i> , Kinahan.	<i>Co. Carlow, Ireland</i> .
<i>T. Thomsoni</i> , Chilton.	<i>Keenepura</i> , N. Z.
<i>T. phormianus</i> , Chilton, M. S.	<i>Canterbury</i> , N. Z.
<i>T. otakensis</i> , Chilton, M. S.	<i>Keenepura</i> , N. Z.
<i>Haplophthalmus danicus</i> , B. L.	<i>Denmark</i> .
<i>Ligidium hypnorum</i> , Cuv.	<i>Vosges</i> .
<i>Ligia oceanica</i> , Fabr.	<i>Britain, Morocco, etc.</i>
<i>L. pallasii</i> , Brandt.	<i>Puget Sound</i> .
<i>L. exotica</i> , Roux.	<i>Hong Kong, Japan</i> .
<i>L. italica</i> , Aud. and Sav.	<i>S. of France</i> .
<i>L. quadrata</i> , Hutton.	<i>Dunedin</i> , N. Z.
<i>L. novæ-zelandiæ</i> , Dana.	<i>Dunedin</i> , N. Z.

TYLIDÆ.

<i>Tylos Latreillii</i> , Aud. and Sav.	<i>Le Croisic</i> .
<i>T. neozelanicus</i> , Chilton.	<i>Wellington</i> , N. Z.

SYSPASTIDÆ.

<i>Syspastus brevicornis</i> , v. Ebner.	<i>S. of France</i> .
--	-----------------------

MALACOSTRACA—AMPHIPODA.

SCINIDÆ.

Scina cornigera, M.-E. 27° N., 36° W.

HYPERIIDÆ.

Hyperia galba, (Mont.) *Britain.*
H. gaudichaudii, M.-E. *Patagonia.*
H. schizogeneios, Stebbing. *Algiers.*
Hyperoche tauriformis, (Sp. B. and W.). *E. Coast, Scotland.*
Parathemisto oblivia, (Kr.)
P. trigona, (Dana). ” *Cape Horn.*
Euthemisto libellula, (Mandt). *Davis Straits.*

VIBILIIDÆ.

Vibilia erratica, Chevreux. *Mediterranean.*

PHRONIMIDÆ.

Phronima sedentaria, (Forsk.) *Naples.*
P. novæ-zealandiæ, Powell. *New Zealand.*
Phronimella elongata, Claus. *Atlantic.*

OXYCEPHALIDÆ.

Oxycephalus edwardsii, G. M. Thomson. *New Zealand.*

ORCHESTIIDÆ.

Allorchestes georgianus, Pffr. *S. Georgia.*
A. novæ-zealandiæ, Dana. *New Zealand.*
Chiltonia mihiwaka, (Chilton). ”
Hyale aquilina, Costa. *Antibes.*
H. camptonyx, (Heller). ”
H. Grimaldii, Chevreux. *Mediterranean.*
H. Lubbockiana, (Sp. Bate). *Torquay, Cumbrae.*
H. Nilssoni, Rathke. *Britain.*

H. Perrieri, (Lucas).	<i>Algiers.</i>
H. Stebbingi, Chevreux.	<i>Canary Islands.</i>
<i>Hyalella inermis</i> , S. I. Smith.	<i>Ecuador.</i>
<i>Orchestia agilis</i> , S. I. Smith.	<i>U.S.A.</i>
<i>O. aucklandiæ</i> , Sp. Bate.	<i>New Zealand.</i>
<i>O. chilensis</i> , M.-E.	<i>New Zealand,</i> <i>Falkland Ids.</i>
<i>O. crassicornis</i> , Costa.	<i>Algiers.</i>
<i>O. littorea</i> (Mont.).	<i>Britain.</i>
<i>O. mediterranea</i> , Costa.	<i>Ilfracombe.</i>
<i>O. Montagui</i> , Aud.	<i>Antibes.</i>
<i>O. scutigerula</i> , Dana.	<i>Falkland Ids.</i>
<i>O. spinipalma</i> , Dana.	<i>Tonga Ids.</i>
<i>O. telluris</i> , Sp. Bate.	<i>New Zealand.</i>
<i>Orchestoidea californiana</i> , Brandt.	<i>Puget Sound.</i>
<i>Parorchestia sylvicola</i> , (Dana).	<i>New Zealand.</i>
<i>Talitrus Alluaudi</i> , Chevreux.	<i>Madagascar.</i>
<i>T. locusta</i> , (Pallas).	<i>Britain.</i>
<i>T. locusta</i> , (Pallas), <i>var. platycheles</i> , (Guér.).	<i>Algiers.</i>
<i>T. sylvaticus</i> , Haswell.	<i>Tasmania.</i>
<i>Talorchestia brito</i> , Stebbing.	<i>North Devon ;</i> <i>Verdon, Gironde.</i>
<i>T. Deshayesii</i> , (Aud.).	<i>North Devon.</i>
<i>T. Quoyana</i> , Dana.	<i>New Zealand.</i>
<i>T. terræ-reginæ</i> , Hasw.	<i>Port Denison,</i> <i>Australia.</i>

LYSIANASSIDÆ.

<i>Anonyx nugax</i> , (Phipps).	<i>Davis Straits.</i>
<i>Aristias tumidus</i> , (Kr.).	<i>Greenland.</i>
<i>Callisoma Hopei</i> , Costa.	<i>Britain.</i>
<i>Euonyx chelatus</i> , Norman.	<i>Off Fair Isle.</i>
<i>Hippomedon denticulatus</i> , (Sp. Bate).	<i>Britain.</i>
<i>H. Holbölli</i> , (Kr.).	<i>Davis Straits.</i>
<i>Hoplonyx cicada</i> , (Fabr.).	”
<i>Lysianax longicornis</i> , (Lucas).	<i>Tunis.</i>
<i>Onesimus caricus</i> , Hansen.	<i>Davis Straits.</i>
<i>O. Edwardsii</i> , (Kr.).	”
<i>Orchomene humilis</i> , (Costa).	<i>Norway.</i>
<i>O. pectinatus</i> , G. O. Sars.	<i>Davis Straits.</i>
<i>Perrierella audouiniana</i> , (Sp. Bate).	<i>Mediterranean.</i>

Podoprion Bolivari, Chevreux.	<i>Vigo Bay.</i>
Pseudalibrotus littoralis, (Kr.).	<i>Davis Straits.</i>
Socarnes bidenticulatus, (Sp. Bate).	„
<i>S. erythrophthalmus</i> , Robertson.	<i>Le Croisic.</i>
<i>S. schmardæ</i> , Heller.	<i>Algiers.</i>
Tryphosa minuta, (Kr.).	<i>Davis Straits.</i>
Tryphosella nanoides, (Lillj.).	<i>Britain.</i>
Tryphosites longipes, (Sp. Bate).	„

PONTOPOREIIDÆ.

Pontoporeia femorata, Kr.	<i>Davis Straits.</i>
<i>P. affinis</i> , (Lindström).	<i>Lake Wetter.</i>
Bathyporeia norvegica, G. O. Sars.	<i>Firth of Clyde.</i>
<i>B. pelagica</i> , Sp. Bate.	<i>Firth of Clyde,</i> <i>Firth of Tay.</i>
<i>B. pilosa</i> , Lindström (?).	<i>Firth of Clyde.</i>
Haustorius arenarius, (Slabber).	<i>Britain.</i>
Urothoë marinus, Sp. Bate.	<i>Firth of Clyde.</i>
<i>U. elegans</i> , Sp. Bate.	„
<i>U. pulchella</i> , Costa.	<i>Le Croisic.</i>
<i>U. brevicornis</i> , Sp. Bate.	<i>Llanfairfechan.</i>
<i>U. Grimaldii</i> , Chevreux.	<i>Jersey.</i>

PHOXOCEPHALIDÆ.

Phoxocephalus Fultoni, T. Scott.	<i>Britain,</i> <i>Mediterranean.</i>
<i>P. Holbölli</i> , (Kr.).	<i>Labrador, 60-100 f.</i>
<i>P. simplex</i> , (Sp. Bate).	<i>Cumbræ, Le Croisic.</i>

AMPELISCIDÆ.

Ampelisca Eschrichtii, Kr.	<i>Davis Straits.</i>
<i>A. macrocephala</i> , Lillj.	<i>Labrador,</i> <i>Davis Straits.</i>
<i>A. laevigata</i> , Lillj.	<i>Firth of Clyde.</i>
<i>A. spinipes</i> , Boeck.	<i>Roundstone, Cumbræ.</i>
<i>A. typica</i> , Sp. Bate.	<i>Cumbræ.</i>
<i>A. tenuicornis</i> , Lillj.	<i>Gareloch.</i>
<i>A. rubella</i> , Costa.	<i>Antibes.</i>
<i>A. spinimana</i> , Chevreux.	<i>Dakar, Senegal.</i>

Byblis Gaimardi, Kr.	<i>Labrador,</i> <i>Davis Straits.</i>
Haploops tubicola, Lillj.	<i>Cumbræ, Mull.</i>
H. setosa, Boeck.	<i>Davis Straits.</i>
H. lævis, Hoek.	..

STEGOCEPHALIDÆ.

Stegocephalus inflatus, Kr.	<i>Davis Straits.</i>
Andaniella pectinata, G. O. Sars.	<i>W. Greenland.</i>

AMPHILOCHIDÆ.

Amphilochus manudens, Sp. Bate.	<i>Britain.</i>
A. neapolitanus, Della Valle.	<i>Antibes.</i>

STENOTHOIDÆ.

Stenothoë marina, Sp. Bate.	<i>Britain.</i>
S. monoculoides, (Mont.).	..

METOPIDÆ.

Metopa longimana, Boeck.	<i>Davis Straits.</i>
M. robusta, G. O. Sars.	<i>Labrador.</i>
Metopella nasuta, (Boeck).	<i>Off Fair Isle.</i>

CRESSIDÆ.

Cressa dubia, Sp. Bate.	<i>Cumbræ.</i>
-------------------------	----------------

LEUCOTHOIDÆ.

Leucothoë spinicarpus, (Abild.).	<i>Firth of Clyde,</i> <i>Norway.</i>
----------------------------------	--

ÆDICERIDÆ.

Acanthostephea Malmgreni, Goës.	<i>Davis Straits.</i>
Aceros phyllonyx, M. Sars.	<i>Kara Sea,</i> <i>Off Fair Isle.</i>
Halimedon brevicealcar, (Goës).	<i>Davis Straits.</i>
H. megalops, G. O. Sars.	..

H. Mülleri, Boeck.	Norway.
Monoculodes carinatus, Sp. Bate.	W. Ireland.
M. longirostris, Goës.	Davis Straits.
M. borealis, Boeck.	Labrador, 100 f.
M. latimanus, Goës, (?).	Davis Straits.
Oediceros borealis, Boeck.	„
Parœdiceros lynceus, (M. Sars.).	„
Perioculodes longimanus, Sp. Bate and Westw.	Britain.
Pontocrates norvegicus, Boeck.	Denmark.
Synchelidium brevicarpum, (Sp. Bate).	W. Ireland.

PARAMPHITHOIDÆ.

Paramphithoë assimilis, G. O. Sars.	Labrador, 60 f.
P. bicuspis, Kr.	Britain, Davis Straits.
P. pulchella, (Kr.).	Labrador, 60 f.
Pleustes panoplus, (Kr.).	Davis Straits.

EPIMERIIDÆ.

Epimeria cornigera, (Fabr.).	Britain.
Acanthozone cuspidata, (Lep.).	Davis Straits.

PHLIADIDÆ.

Pereionotus testudo, (Mont.).	Golfe de St. Tropez.
-------------------------------	----------------------

IPHIMEDIIDÆ.

Acanthonotosoma cristatum, (Owen).	Davis Straits.
A. inflatum, Kr.	„
Guernea coalita, (Norman).	Antibes.
Iphimedia minuta, G. O. Sars.	E. Coast, Scotland.
I. obesa, Rathke.	Britain, Norway.
Odius carinatus, (Sp. Bate).	Labrador, 60 f.

LAPHYSTIIDÆ.

Laphystius sturionis, Kr.	Firth of Clyde.
---------------------------	-----------------

SYRRHOIDÆ.

Syrrhoë crenulata, Goës.	Davis Straits.
Tiron acanthurus, Lillj.	Labrador, 100 f.

EUSIRIDÆ.

Eusirus Holmii, Hansen. (?)	<i>Davis Straits.</i>
<i>E. longipes</i> , Boeck.	<i>W. Coast, Scotland.</i>
<i>Rhachotropis aculeata</i> , (Lep.).	<i>Davis Straits,</i> <i>Barents Sea.</i>
<i>R. Helleri</i> , Boeck.	<i>Davis Straits.</i>
<i>R. inflata</i> , G. O. Sars.	<i>Labrador, 60 f.</i>
<i>R. oculata</i> , Hansen.	<i>Davis Straits.</i>

CALLIOPHIDÆ.

<i>Amphithopsis glacialis</i> , Hansen.	<i>Davis Straits.</i>
<i>Apherusa bispinosa</i> , (Sp. Bate).	<i>E. Coast, Scotland ;</i> <i>Antibes.</i>
<i>A. borealis</i> , Boeck.	<i>Britain.</i>
<i>A. Jurinii</i> , (M.-E.).	„
<i>Calliopijs læviusculus</i> , Kr.	<i>E. and W. Coast,</i> <i>Scotland.</i>
<i>Cleippides quadricuspis</i> , Heller.	<i>Davis Straits.</i>
<i>C. tricuspis</i> , Boeck.	„
<i>Halirages fulvocinctus</i> , (Sars).	„
<i>Haliragoides inermis</i> , G. O. Sars.	<i>Labrador, 100 f.</i>
<i>Paracalliope fluviatilis</i> , (G. M. Thomson).	<i>Dunedin, N. Z.</i>
<i>Paraleptamphopus subterraneus</i> , (Chilton).	<i>Eyreton, N. Z.</i>
<i>Pontogeneia inermis</i> , (Kr.).	<i>Davis Straits.</i>

ATYLIDÆ.

<i>Atylus carinatus</i> , Fabr.	<i>Davis Straits.</i>
<i>A. danai</i> , G. M. Thomson.	<i>New Zealand.</i>
<i>Bovallia gigantea</i> , Pffr.	<i>South Georgia.</i>
<i>Dexamine spiniventris</i> , Costa.	<i>Antibes.</i>
<i>D. spinosa</i> , (Mont.).	<i>Britain.</i>
<i>D. thea</i> , Boeck.	<i>Cumbrac, Galway.</i>
<i>Paradexamine pacifica</i> , (G. M. Thomson).	<i>New Zealand.</i>
<i>Paratylus guttatus</i> , (Costa).	<i>Vivers, Spain.</i>
<i>P. Smitti</i> , (Goës).	<i>Davis Straits.</i>
<i>P. Swammerdamii</i> , M.-E.	<i>Britain,</i> <i>Mediterranean.</i>
<i>P. vedlomensis</i> , Sp. Bate and Westw.	<i>Firth of Clyde,</i> <i>W. Ireland.</i>
<i>Polycheria Osborni</i> , Calm.	<i>Puget Sound.</i>

Stebbingia gregaria, Pffr.	South Georgia.
Tritæta gibbosa (Sp. Bate).	Britain.

GAMMARIDÆ.

Amathilla homari, (Fabr.).	Britain, Greenland.
Carinogammarus fluviatilis, (Rösel).	Heidelberg.
Cheirocratus Sundewalli, (Rathke).	W. Ireland.
Echinogammarus Berilloni, (Catta).	Jersey.
Elasmopus rapax, Costa.	Algiers.
Gammaracanthus loricatus, (Sabine).	Davis Straits.
G. relictus, G. O. Sars.	Lake Wetter.
Gammarella brevicaudata, (M.-E.).	Cette.
Gammarus duebeni, Lillj.	Nova Zembla,
	W. Ireland, France.
G. locusta, (L.).	Arctic Seas, Britain.
G. marinus, Leach.	Britain.
G. pulex, Penn.	,,
G. Simoni, Chevreux.	Algiers.
G. Veneris, Heller.	Cette.
Mæra dubia, Calm.	Puget Sound.
M. fasciculata, G. M. Thomson.	New Zealand.
M. grossimana, (Mont.).	Ilfracombe.
M. Othonis, M.-E.	Cumbræ.
M. quadrimana, Dana.	Stewart Island, N. Z.
Melita dentata, (Kr.).	Davis Straits.
M. inæquistylis, Dana.	New Zealand.
M. palmata, (Mont.).	Ilfracombe.
Neoniphargus Thomsoni, Stebb.	Mt. Wellington,
	Tasmania.
Niphargus aquilex, Schiödte.	Isle of Wight.
N. Mortoni, G. M. Thomson,	Mt. Wellington,
	Tasmania
N. puteanus, Koch.	Prague.
Pallasea quadrispinosa, G. O. Sars.	Lake Wetter.
Paracrangonyx compactus, (Chilton).	Eyreton, N. Z.

MELPHIDIPPIDÆ.

Melphidippa Goësi, Stebb., (Melphidippa spinosa, Goës.).	Davis Straits,
	Labrador.
Melphidippella macera, Norm.	Firth of Forth.

PHOTIDÆ.

Aora gracilis, Sp. Bate.	Roundstone, Jersey.
A. typica, Kr.	New Zealand.
Autonoë longipes, Lillj.	Denmark.
Gammaropsis erythrophthalmus, Lillj.	Firth of Clyde.
Leptocheirus pilosus, Zadd.	Roundstone.
Megaluropus agilis, Norm.	Firth of Clyde, St. Andrews.
Microdeutopus gryllotalpa, Costa.	Denmark.
Microprotopus maculatus, Norm.	Britain.
Photis longicaudatus, Sp. Bate.	Jersey.
P. Reinhardi, Kr.	Gulf of St. Lawrence.
Protomedeia fasciata, Kr.	Davis Straits.
Podoceropsis excavata, (Sp. Bate).	E. Coast, Scotland.
Stimpsonella chelifera, (Sp. Bate).	Brittany.

AMPHITHOIDÆ.

Amphithoë rubricata, (Mont.).	Britain.
A. humeralis, Stimpson.	Puget Sound.

ISCHYROCERIDÆ.

Erichthonius difformis, M.-E.	Denmark.
Ischyrocerus anguipes, Kr.	Davis Straits.
Jassa pulchella, Leach, (Podocerus falcatus, Mont.).	Britain.
J. minuta, (G. O. Sars).	W. Coast, Scotland.
Microjassa cumbrensis, (Stebb. and Rob.).	Cunbrae.
Parajassa pelagica, (Leach).	E. Coast, Scotland.
(Podocerus) ingens, Pffr.	S. Georgia.
(Podocerus) validus, Dana.	New Zealand.

COROPHIIDÆ.

Cerapopsis longipes, Della Valle.	Algiers.
Cerapus Flindersii, Stebb.	Port Jackson.
Corophium Bonelli, M.-E.	E. Coast, Scotland.
C. crassicorne, Bruz.	Firth of Clyde.
C. acherusicum, Costa.	Algiers.
C. grossipes, (L.).	Britain.
Unciola leucopis, (Kr.).	Kara Sea.

ICILIIDÆ.

Icilius australis, Hasw. *Port Jackson.*

CHELURIDÆ.

Chelura terebrans, Philippi. *Firth of Clyde.*

DULICHIIDÆ.

Lætmatophilus tuberculatus, Bruz. *Denmark, Algiers.*

Podocerus variegatus, Leach., (= *Platophium*
Darwini, Sp. Bate). *Jersey.*

Dulichia spinosissima, Kr. *Davis Straits.*

D. falcata, Sp. Bate. *Firth of Clyde.*

D. monacantha, Metz. *Firth of Forth.*

CAPRELLIDÆ.

Cercops holbolli, Kr. *Off Cape Raper, Lat. 69° 45' N.*
Long. 67° 20' W.

Proto ventricosa, (O. F. M.). *Britain.*

Protella australis, Hasw. *Port Jackson.*

Pseudoprotella phasma, (Mont.). *Britain.*

P. phasma quadrispinis, Mayer. *Naples.*

Aegina longicornis, Kr. *Davis Straits.*

Caprella acanthifera, Leach. *Britain, Naples.*

C. acutifrons, Latr. *Naples, Behring Sea,*
Yokohama.

C. acutifrons *Andreae*, Mayer. *Mediterranean.*

C. acutifrons pachyderma, Mayer. *Yokohama.*

C. acutifrons typica, Mayer. *Naples.*

C. æquilibra, Say. *"*

C. alaskana. *Unalaska.*

C. carina. *Greenland.*

C. Danilewskii, Czern. *Cette.*

C. dubia, Hansen. *Davis Straits.*

C. fretensis, Stebb. *Ilfracombe.*

C. horrida, G. O. Sars. *Davis Straits.*

C. kroyeri, de Haan. *Japan.*

C. linearis, (L.). *Britain, Unalaska,*
Behring Sea.

C. linearis gracilior, Mayer. *Behring Sea.*

C. liparotensis, Haller. *Naples.*

<i>C. scaura</i> , Templ.	<i>Chili.</i>
<i>C. septentrionalis</i> , Kr.	<i>Davis Straits,</i> <i>E. Coast, Scotland.</i>
<i>Podalirius typicus</i> , Kr.	<i>Devon, Denmark.</i>
<i>Pseudolirius Kröyeri</i> , (Haller).	<i>Naples.</i>

CYAMIDÆ.

<i>Cyamus mysticeti</i> , Lütke.	<i>Arctic Sea.</i>
<i>C. monodontis</i> , Lütke.	<i>Davis Straits.</i>
<i>C. nodosus</i> , Lütke.	„
<i>C. boopis</i> , Lütke.	<i>Bergen.</i>
<i>C. globicipitis</i> , Lütke.	<i>Loc. ?</i>
<i>C. gracilis</i> , R. de V.	<i>Pacific</i>
<i>Platycyamus Thompsoni</i> , (Gosse).	<i>Loc. ?</i>

MALACOSTRACA—STOMATOPODA.

<i>Squilla mantis</i> , Rond.	<i>Mediterranean.</i>
<i>S. desmarestii</i> , Risso.	„
<i>S. affinis</i> , Berthold.	<i>Japan.</i>
<i>S. scorpio</i> , Latr.	<i>Saigon.</i>
<i>Gonodactylus falcatus</i> , (Forsk.).	<i>Samoa.</i>
<i>G. glabrous</i> , Brooks.	<i>Samoa, Madras.</i>
<i>G. Oerstedii</i> , Hansen.	<i>St. Thomas.</i>
<i>Pseudosquilla ornata</i> , Miers.	<i>Mauritius.</i>

LARVÆ.

<i>Alima laticauda</i> , M.-E.	<i>South Seas.</i>
<i>Erichthus edwardsii</i> , Eyd. and Soul.	<i>Indian Ocean.</i>
<i>E. spiniger</i> , Dana.	<i>South Seas.</i>
<i>E. Guerinii</i> , Eyd. and Soul.	<i>Atlantic Ocean.</i>
<i>E. tectus</i> , M.-E.	<i>South Atlantic.</i>

MALACOSTRACA—PHYLLOCARIDA.

<i>Nebalia</i> spp. ?	<i>Plymouth, Jersey, Roundstone.</i> <i>Davis Straits, Unalaska,</i> <i>Pribyloff Ids.</i>
-----------------------	--

ENTOMOSTRACA—COPEPODA.

COPEPODA NON-PARASITA.

CALANIDÆ.

Calanus finmarchicus, Gunner.	<i>Britain, Davis Straits, Castrics Bay, etc.</i>
<i>C. vulgaris</i> , (Dana).	<i>Challenger Exp.</i>
<i>C. hyperboreus</i> , Kr.	<i>N. of Scotland.</i>
Eucalanus crassus, Giesb.	<i>Fair Isle.</i>
<i>E. elongatus</i> , (Dana).	„
Paracalanus parvus, (Claus).	<i>Britain.</i>
Pseudocalanus elongatus, Bk.	<i>North Sea.</i>
Stephus minor, T. Scott.	<i>Firth of Forth.</i>
Pseudocyclopia crassicornis, T. Scott.	„
<i>P. caudata</i> , T. Scott.	„
Bradyidius armatus, (Vanhöffen).	<i>Firth of Clyde.</i>
Euchaeta norvegica, Boeck.	<i>Loch Fyne, Loch Etive.</i>
Scolecithrix hibernica, A. Scott.	<i>Firth of Clyde.</i>
<i>S. pygmæa</i> , T. Scott.	„

CENTROPAGIDÆ.

Centropages typicus, Kr.	<i>Firth of Forth.</i>
<i>C. hamatus</i> , (Lillj.).	<i>Liverpool Bay.</i>
Isias clavipes, Boeck.	<i>Arran.</i>
Diaptomus gracilis, G. O. S.	<i>Loch Lubnaig.</i>
<i>D. hircus</i> , (G. Brady).	<i>Orkney.</i>
<i>D. laciniatus</i> , Lillj.	<i>Loch Doon, Ayrshire.</i>
<i>D. castor</i> , (Jur.).	<i>Aberdeenshire.</i>
<i>D. wierzejskii</i> , J. Rich.	<i>Hebrides.</i>
Temora longicornis, (Müll.).	<i>Britain.</i>
Eurytemora affinis, (Poppe).	<i>Firth of Forth.</i>
<i>E. velox</i> , (Lillj.).	<i>Britain.</i>
Metridia lucens, Boeck.	„
Paramisophria cluthæ, T. Scott.	<i>Firth of Clyde.</i>

PSEUDOCYCLOPIDÆ.

Pseudocyclops obtusatus, Br. and Rob. *Firth of Forth.*

CANDACIIDÆ.

Candacia pachydactyla, Dana. *Locality?*
C. pectinata, Brady. *Firth of Clyde.*

PONTELLIDÆ.

Labidocera wollastoni, (Lubb.).
Anomalocera patersonii, Templ. *Britain.*
Parapontella brevicornis, (Lubb.). *Loch Tarbert.*
Acartia clausii, Giesb. *Liverpool Bay,*
Firth of Clyde.
A. longiremis (Lillj.). *Firth of Forth.*
A. discaudata, (Giesb.). *Loch Eil.*

MISOPHRIIDÆ.

Misophria pallida, Boeck. *Cromarty Firth,*
Loch Fyne.

CYCLOPIDÆ.

Thorellia brunnea, Boeck. *Loch Tarbert.*
Hersiliodes littoralis, (T. Scott). *Queensferry.*
Cyclops æquoreus, Fischer. *Mouth of Eden,*
Guardbridge.
C. affinis, G. O. S. *Loch near Scarborough.*
C. fimbriatus, Fischer. *Possil Marsh.*
C. macrurus, G. O. S. *Loch Lubnaig.*
C. phaleratus, Koch. *Edinburgh.*
C. viridis, Fischer. *nr. Glasgow, Galway.*
C. strenuus, Fischer. *Loch Oich.*
C. vernalis, Fischer. *Loch Lomond.*
C. leuckarti, Claus. *Loch Vennacher.*
C. bicuspidatus, Claus. *Forfar Loch.*
C. bisetosus, Rehberg. *Aberdeen.*
C. serrulatus, Fischer. *Lochs, Scotland.*
C. albidus, (Jurine). *Loch Doon, Ayrshire.*
Cyclopina gracilis, Claus. *W. Loch Tarbert.*

NOTODELPHYIDÆ.

Doropygus gibber, Thorell.	<i>Naples.</i>
Notodelphys allmani, Thorell.	<i>Liverpool Bay.</i>
<i>N. prasina</i> , Thorell.	<i>Loch Fyne.</i>
Botachus cylindratus, Thorell.	<i>Liverpool Bay.</i>
Notopterophorus papilio, Hesse.	<i>E. Loch Tarbert.</i>
	<i>Naples.</i>

HARPACTICIDÆ.

Zosima typica, Boeck.	<i>Moray Firth.</i>
Longipedia coronata, Claus.	<i>Liverpool Bay.</i>
<i>L. minor</i> , T. Scott.	<i>Firth of Forth.</i>
Canuella perplexa, T. and A. Scott.	„
Ectinosoma melaniceps, Brady.	<i>Cromarty Firth.</i>
<i>E. atlanticum</i> , (Br. and Rob.).	<i>Loch Fyne.</i>
<i>E. Sarsi</i> , Boeck.	<i>Firth of Forth.</i>
<i>E. gracile</i> , T. and A. Scott.	„
<i>E. normani</i> , T. and A. Scott, (?).	„
Bradya typica, Boeck.	<i>Moray Firth.</i>
<i>B. similis</i> , T. Scott.	„
<i>B. elegans</i> , T. Scott.	„
<i>B. minor</i> , T. and A. Scott.	<i>Aberdeen.</i>
Tachidius brevicornis, Müller.	<i>W. Loch Tarbert.</i>
<i>T. littoralis</i> , Poppe.	„
Robertsonia tenuis, Br. and Rob.	<i>Moray Firth.</i>
Euterpe acutifrons, (Dana).	<i>Irish Sea.</i>
Amymone nigrans, T. and A. Scott.	<i>Cromarty Firth.</i>
Delavalia æmula, T. Scott.	<i>Moray Firth.</i>
<i>D. mimica</i> , T. Scott.	„
<i>D. palustris</i> , G. Brady.	<i>W. Loch Tarbert.</i>
Jonesiella spinulosa, (Br. and Rob.).	<i>Firth of Forth.</i>
Ameira longicaudata, T. and A. Scott.	<i>Cromarty Firth.</i>
<i>A. longiremis</i> , T. Scott.	<i>Moray Firth.</i>
Stenhelia denticulata, I. C. Thompson.	<i>Firth of Forth.</i>
<i>S. intermedia</i> , T. Scott.	<i>Moray Firth.</i>
<i>S. reflexa</i> , T. Scott.	<i>Firth of Forth.</i>
Canthocamptus hirticornis, T. Scott.	<i>Loch Dortuin,</i>
	<i>Outer Hebrides.</i>
<i>C. Northumbriensis</i> , G. Brady.	<i>Duddingston Loch,</i>
	<i>Edinburgh.</i>

<i>C. schmeilii</i> , Mrazek.	<i>Loch Leven.</i>
<i>C. staphylinus</i> , Jurine.	<i>Possil Marsh.</i>
<i>C. duthiei</i> , T. Scott.	<i>Loch Leven.</i>
<i>C. minutus</i> , Claus.	<i>Ythan, Aberdeenshire.</i>
<i>C. inornatus</i> , T. Scott.	”
<i>C. Zschokkei</i> , Schmeil.	”
<i>Attheyella crassa</i> , (G. O. S.).	<i>N. Uist.</i>
<i>A. pygmæa</i> , (G. O. S.).	<i>Ythan, Aberdeenshire.</i>
<i>Moraria Anderson-Smithii</i> , T. and A. Scott.	<i>Edinburgh.</i>
<i>M. Poppei</i> , (Mrazek).	<i>Ythan, Aberdeenshire.</i>
<i>Maraenobiotus vej dovskii</i> , Mrazek.	<i>Loch Doon.</i>
<i>Neobradya pectinifer</i> , T. Scott.	<i>Firth of Forth.</i>
<i>Diosaccus tenuicornis</i> , (Claus).	<i>Loch Fyne.</i>
<i>Laophonte inopinata</i> , T. Scott.	<i>Firth of Forth.</i>
<i>L. intermedia</i> , T. Scott.	”
<i>L. littorale</i> , T. and A. Scott.	<i>Cromarty Firth.</i>
<i>L. longicaudata</i> , Boeck.	<i>Firth of Forth,</i> <i>Moray Firth.</i>
<i>L. Mohammed</i> , Br. and Rob.	<i>Clyde.</i>
<i>L. simulans</i> , T. Scott.	<i>Firth of Forth.</i>
<i>L. spinosa</i> , I. C. Thompson.	<i>Port Erin.</i>
<i>L. hispida</i> , (Br. and Rob.).	<i>Firth of Forth.</i>
<i>L. denticornis</i> , T. Scott.	”
<i>L. horrida</i> , Norman.	”
<i>Laophontodes typicus</i> , T. Scott.	”
<i>Mesochra Lilljeborgii</i> , Boeck.	”
<i>M. M'Intoshi</i> , T. and A. Scott.	”
<i>M. spinicauda</i> , T. and A. Scott.	”
<i>Paramesochra dubia</i> , T. Scott.	”
<i>Cletodes hirsutipes</i> , T. Scott.	<i>Moray Firth.</i>
<i>C. perplexus</i> , T. Scott.	”
<i>Itunella tenuiremis</i> , (T. Scott).	<i>W. Loch Tarbert.</i>
<i>Tetragoniceps incertus</i> , T. Scott.	<i>Firth of Forth.</i>
<i>T. malleolata</i> , Brady.	”
<i>T. brevicauda</i> , T. Scott.	”
<i>T. macronyx</i> , T. Scott.	”
<i>T. bradyi</i> , T. Scott.	”
<i>Normanella dubia</i> , (Br. and Rob.).	<i>Moray Firth.</i>
<i>Platychelipus littoralis</i> , Brady.	<i>W. Loch Tarbert,</i> <i>Firth of Forth.</i>
<i>Harpacticus chelifer</i> , Müller.	<i>Liverpool Bay,</i> <i>Carnoustie.</i>

Thalestris harpacticoides, Claus.	<i>Firth of Forth.</i>
T. rufocinctus, Norman.	<i>Liverpool Bay.</i>
T. krohnii, (Kröyer).	<i>Firth of Forth.</i>
T. peltatus, (Boeck).	<i>Loch Fyne.</i>
Dactylopus flavus, Claus.	<i>Firth of Forth.</i>
D. tisboides, Claus.	<i>Cromarty Firth.</i>
Alteutha depressa, (Baird).	<i>Liverpool Bay.</i>
Pseudothalestris pygmæus, (T. and A. Scott).	<i>Cromarty Firth.</i>
Zaus Goodsiri, Brady.	<i>Firth of Forth.</i>
Porcellidium fimbriatum, Claus.	<i>E. Loch Tarbert.</i>
Idya longicornis, T. and A. Scott.	<i>Loch Fyne.</i>
I. cluthæ, T. Scott.	„
Cylindropsyllus lævis, Brady.	<i>Firth of Forth.</i>
C. minor, T. Scott.	„

CORYCÆIDÆ.

Monstrilla rigida, I. C. Thompson.	<i>Port Erin.</i>
M. danæ, Clap.	<i>Loch Fyne.</i>

SAPPHIRINIDÆ.

Lichomolgus forficulus, Thorell.	<i>E. Loch Tarbert.</i>
L. hirsutipes, Scott.	<i>Firth of Forth.</i>
L. maximus, I. C. Thompson, (from Pecten maximus).	<i>Liverpool Bay.</i>
Pseudanthessius liber, (Br. and Rob.).	<i>Firth of Clyde.</i>

ARTOTROGIDÆ.

Asterocheres Boeckii, (G. Brady).	<i>E. Loch Tarbert.</i>
Acontiophorus scutatus, (Br. and Rob.).	<i>Firth of Forth.</i>
Parartotrogus richardi, T. and A. Scott.	„

COPEPODA—PARASITA.

ERGASILIDÆ.

Bomolochus soleæ, Claus, (<i>G. callarius</i> , L.).	<i>Aberdeen.</i>
Thersites gasterostei, Pagenst, (<i>Gast. aculeatus</i> , L.).	„

CALIGIDÆ.

<i>Caligus rapax</i> , M.-E., (<i>Cycl. lumpus</i> , L.).	Liverpool Bay, Jersey, Crail.
<i>C. diaphanus</i> , Nordm., (<i>Tr. cuculus</i> , L., <i>T. gurnardus</i> , L.).	Plymouth, Moray Firth.
<i>C. curtus</i> , (Müller), (<i>Trigla</i> sp., <i>Gadus</i> sp.).	Plymouth.
<i>C. scombri</i> , P. H. B. S., (<i>Sc. scomber</i> , L.).	„
<i>C. minimus</i> , Nordm., (<i>Labrax lupus</i> , Cuv.).	„
<i>C. centrodoni</i> , Baird, (<i>Labrax</i> , sp.).	Jersey.
<i>Lepeophtheirus pollachius</i> , P. H. B. S., <i>G. pollachius</i> , L.).	Plymouth, Aberdeen.
<i>L. Thompsoni</i> , Brandt, (<i>Rh. maximus</i> , L.).	Moray Firth.
<i>L. hippoglossi</i> , (Kr.), (<i>Hippoglossus vulgaris</i> , Flem.).	North Sea.
<i>L. pectoralis</i> , Müller, (<i>Pleur. flesus</i> , L.).	Plymouth, Dundee.
<i>L. stromii</i> , Baird, (<i>Salmo trutta</i>).	Plymouth, Easthaven.
<i>L. obscurus</i> , Baird, (<i>R. rhombus</i> , L.).	Plymouth.
<i>Trebius caudatus</i> , Kr., (<i>R. batis</i> , L.).	Durham, Moray Firth, Brighton.
<i>Dinematura ferox</i> , Kr., (<i>Scymn. microcephalus</i> , Kr.).	Greenland.
<i>D. productus</i> , Müll., (<i>Alop. vulpes</i> , auct.).	Dundee.
<i>Echthrogaleus coleoptratus</i> , Guér.	Naples.
<i>Cecrops latreillii</i> , Leach, (<i>Orth. mola</i> , L.).	Britain, Naples, Puget Sound.
<i>Pandarus bicolor</i> , Leach, (<i>Carch. glaucus</i> , (L.).	Jersey.
<i>P. cranchii</i> .	Atlantic.

DICHELESTIDÆ.

<i>Clavella hippoglossi</i> , Kr., (<i>Hippoglossus vulg.</i>).	Aberdeen.
<i>Cycnus pallidus</i> , (Van Beneden), (<i>Conger vulg.</i>).	„

LERNÆIDÆ.

<i>Lerneænicus sprattæ</i> , Sowerby, (<i>Clupea</i> <i>sprattus</i> , L.).	Sheerness, Annan, Solway.
<i>Lernæa branchialis</i> , L., (<i>G. aeglefinus</i> , L.).	Dundee.
<i>L. minuta</i> , T. Scott, (<i>Gobius minutus</i> , Gmelin).	Solway.

L. luscii, P. H. B. S., (<i>G. luscus</i> , L.).	Plymouth.
Pennella balænopteræ, Kor. and Dan., (<i>Balænoptera rostrata</i>).	Norway.

CHONDRACANTHIDÆ.

Oralien asellinus, (L.), (<i>Tr. gurnardus</i> , L.).	Moray Firth.
Chondracanthus clavatus, P. H. B. S., (<i>Pleur. microcephalus</i> , Don.).	Plymouth, Moray Firth.
C. ornatus, T. Scott, (<i>Callion. maculatus</i> , Bonap.).	Firth of Clyde.
C. merluccii, Holten, (<i>Merluccius vulg.</i> , Cuv.).	„
C. fluræ, Kr., (<i>Hippogl. limandoides</i> , auct.).	Moray Firth.
C. annulatus, Olsson, (<i>R. batis</i> , L.).	Aberdeen.
C. cornutus, Müller, (<i>Pl. platessa</i> , L.).	Plymouth.
C. triglæ, Blainv., (<i>Tr. gurnardus</i> , L.).	„
C. Dufresnii, Blainv., (<i>Loph. piscatorius</i>).	Britain.
C. zeii, Delaroché, (<i>Zeus faber</i> , L.).	Galway, Jersey.
C. soleæ, Kr., (<i>Solea vulg.</i> , Quen.).	Clyde.
C. limandæ, Kr., (<i>Pl. limanda</i> , L.).	Moray Firth.

LERNÆOPODIDÆ.

Charopinus dubius, T. S., (<i>Raia circularis</i> , Couch).	„
C. ramosus, Kr., (<i>Raia maculata</i> , Mont.).	North Sea.
C. dalmanni, (Retz.), (<i>R. batis</i> , L.).	Aberdeen.
Thysanote impudica, Nordm., (<i>Tr. cuculus</i> , L.).	Plymouth, Moray Firth.
Lernæopoda galei, Kr., (<i>G. canis</i> , L.).	Plymouth, Aberdeen.
L. bidiscalis, Kane, (<i>G. canis</i> , L.).	Aberdeen.
L. salmonea, (L.), (<i>S. salar</i> , L.).	Britain.
Brachiella insidiosa, Heller, (<i>Merluccius vulg.</i> , Cuv.).	Plymouth, Clyde.
B. merluccii, P. H. B. S., (<i>Merluccius vulg.</i> , Cuv.).	Plymouth, North Sea.
B. bispinosa, Nordm., (<i>Tr. cuculus</i> , L.).	Plymouth.
B. ovalis, Kr., (?),	Moray Firth.
B. rostrata, Kr., (<i>Hippoglossus vulg.</i> , Flem.).	North Sea.
Anchorella uncinata, Müller, (<i>G. aglefinus</i> , L.).	Dundee.
A. rugosa, Kr., (<i>Anarrh. lupus</i> , L.).	„

CHONIOSTOMATIDÆ.

- Sphæronella paradoxa, H. J. H., (*Bathyporeia* sp.). Denmark.
 S. giardii, H. J. H., (*Protomedea fasciata*).
 Stenothocheres egregius, H. J. H., (*Metopa
 Bruzelii*, Goës). 66° N., 54° W., 40 f.
 Homoeoscelis minuta, H. J. H., (*Diastylis
 lucifera*, Kr.). Denmark.

BRANCHIURA.

- Argulus foliaceus, (L.). Britain.
 A. scutiformis, Thiele. Japan.
 Gyropeltis Koseritzi, v. Jhering, (*Arius* sp.) Rio Grande do Sul.

CIRRIPEDIA.

- Lepas anatifera, L. Britain, etc.
 L. anserifera, L. Locality?
 L. fascicularis, Ellis and Solander. Britain, etc.
 Dichelaspis aymonini, Lessona, (?). Japan.
 D. darwinii, Filippi. Naples.
 Trichelaspis Forresti, Stebbing. Antigua.
 Conchoderma auritum, (L.). Atlantic.
 C. virgatum, (Spengler).
 Ibla quadrivalvis, (Cuv.). Port Philip,
 Australia.
 Scalpellum vulgare, Leach. Plymouth.
 S. Strömii, G. O. Sars. Chall. Exp.,
 St. 49, 83 f.
 S. balanoides, Hoek. Chall. Exp., St. 192.
 S. nymphicola, Hoek. "Triton," St. 9, 605 f.
 Faroe Chann., "Knight
 Errant," 548 f.
 Pollicipes polymerus, Sowerby. Pacific, Puget Sound.
 Lithotrya dorsalis, Sowerby. Locality?
 Balanus porcatus, da Costa. U. S. A.
 B. crenatus, Bruguière. Britain.
 B. crenatus, Bruguière, var. Davis Straits.

B. balanoides, (L.).	Britain.
Chelonobia testudinaria, (L.).	Locality ?
Coronula balænarum, (Gmelin).	”
C. reginæ. Darwin, (?).	Puget Sound.

CLADOCERA.

Latona setifera, (Müller).	Killin.
Daphnella brachyura, (Liévin).	Glasgow.
Sida crystallina, (Müller).	Dundee, Glasgow, Galway.
Holopedium gibberum, Zaddach.	Loch Morar, Loch Arklet, Lervig, Norway. Scotland, Ireland.
Daphnia pulex, De Geer.	Dundee.
D. pulex, var. Schœdleri, G. O. Sars.	Galway, L. Melvin.
D. galeata, G. O. Sars.	Galway, Shetland.
D. longispina, Müller.	Loch Tay, Windermere.
D. Jardinii, Baird.	Lochmaben.
D. Jardinii, var. Kahlbergensis, Schödler.	Possil Marsh, Galway.
Simocephalus vetulus, (Müller).	Kirkcaldy.
Scapholeberis mucronatus, (Müller).	Galway.
Ceriodaphnia megops, G. O. Sars.	Scarborough.
C. reticulata, (Jurine).	Glasgow.
C. quadrangula, (Müller).	Galway, L. Melvin.
Bosmina longispina, Leydig.	Dundee.
B. longirostris, (Müller).	Lochmaben.
B. coregoni, Baird.	Barra.
Acantholeberis curvirostris, (Müller).	Loch Tay.
Ilyocryptus sordidus, (Liévin).	N. Uist.
Drepanothrix dentata, (Euren).	Galway, Greenland.
Eurycercus lamellatus, (Müller).	Possil Marsh, Galway.
Acroperus harpæ, (Baird).	Galway, N. Uist.
Alonopsis elongata, (G. O. Sars).	Scarborough.
Leydigia acanthocercoides, (Fischer).	N. Uist.
Lynceus quadrangularis, Müll.	Scarborough.
L. tenuicaudis, (G. O. Sars).	”
L. costata, (G. O. Sars).	”
L. guttata, (G. O. Sars).	”

<i>L. intermedia</i> , (G. O. Sars).	<i>Argyleshire.</i>
<i>L. affinis</i> , Leydig.	<i>Galway.</i>
<i>Harporhynchus falcatus</i> , (G. O. Sars).	<i>N. Uist.</i>
<i>Graptoleberis testudinaria</i> , (Fischer).	<i>Glasgow, Galway.</i>
<i>Alonella exigua</i> , (Lilljeb).	<i>Loch Lubnaig.</i>
<i>Peracantha truncata</i> , (Müll.).	<i>Glasgow, Dundee.</i>
<i>Pleuroxus lævis</i> , G. O. Sars.	<i>Possil Marsh.</i>
<i>P. uncinatus</i> , Baird.	<i>Glasgow.</i>
<i>P. trigonellus</i> , (Müll.).	<i>Kirkcaldy, Galway.</i>
<i>Chydorus globosus</i> , Baird.	<i>Uist.</i>
<i>C. sphæricus</i> , (Müll.).	<i>Galway, Barra.</i>
<i>C. barbatus</i> , G. S. Brady.	<i>Barra.</i>
<i>Monospilus tenuirostris</i> , (Fischer).	<i>Loch Leven.</i>
<i>Bythotrephes longimanus</i> , Lilljeb.	<i>Loch Morar, Dundee.</i>
<i>Leptodora hyalina</i> , Lilljeb.	<i>Loch Morar, Loch Ness, Lochmaben, Galway.</i>
<i>Evadne nordmanni</i> , Lovén.	<i>Plymouth, E. Scotland.</i>
<i>Podon intermedius</i> , Lilljeb.	<i>Plymouth.</i>

PHYLLOPODA.

<i>Apus cancriformis</i> , Schæffer.	<i>Locality?</i>
<i>Lepidurus glacialis</i> , Kr.	<i>Spitzbergen, Greenland, Pribyloff Ids.</i>
<i>L. Kirkii</i> , G. M. Thomson.	<i>Christchurch, N.Z.</i>
<i>L. productus</i> , Bosc.	<i>Algiers.</i>
<i>Chirocephalus diaphanus</i> , Prévost.	<i>Birmingham.</i>
<i>Branchipus grubei</i> , Dyb.	<i>Berlin.</i>
<i>Streptocephalus torvicornis</i> , Waga.	<i>Locality?</i>
<i>Branchinecta paludosa</i> , Müller.	<i>Pribyloff Ids., Greenland.</i>
<i>Polyartemia forcipata</i> , Fischer.	<i>Pribyloff Ids.</i>
<i>Artemia fertilis</i> , Verrill.	<i>Utah.</i>
<i>A. salina</i> , Fabr.	<i>Locality?</i>
<i>Eulimnadia similis</i> , G. O. Sars.	<i>Mysore.</i>
<i>Estheria ticinensis</i> , Crivelli.	<i>Italy.</i>
<i>Leptestheria nobilis</i> , G. O. Sars.	<i>Mysore.</i>

XIPHOSURA.

Limulus polyphemus, (L.).	<i>Locality?</i>
L. moluccanus, Latr.	,,
L. longispina, Van der Hoeven.	<i>Japan.</i>

PYCNOGONIDA.

- Nymphon brevirostre*, Hodge. *Starcross, Devon.*
N. brevitarse, Kr. *Str. of Denmark,*
Ingolf Exp., St. 95,
Davis Straits.
N. gallicum, Hoek. *Plymouth, Jersey,*
Galway.
N. elegans, Hansen. *Davis Straits.*
N. gracile, Leach. *St. Andrews,*
Easthaven.
N. grossipes, Fabr. *Orkney, Moray Firth,*
Labrador,
Davis Straits.
N. longitarse, Kr. *Davis Straits, Norway*
N. leptocheles, Kr. *Norway.*
N. macrum, (Wilson), G. O. Sars. *Davis Straits, 365 f.*
N. megalops, G. O. Sars. *61° 23' N., 5° E.*
N. mixtum, Kr. *Labrador,*
Davis Straits.
N. rubrum, Hodge. *Firth of Forth,*
Cumbræ,
Plymouth, etc.
N. serratum, G. O. Sars. *Fylla Exp., 1884.*
N. sluiteri, Hoek. *Davis Straits.*
N. Strömii, Kr. *Norway. Shetland,*
Sunburgh Head.
Chaetonymphon hirtipes, (Bell). *Davis Straits.*
C. hirtum, (Fabr.). *Montrose, Easthaven,*
Firth of Forth.
C. macronyx, G. O. Sars. *Faroe Chan., "Triton" Exp.*
Davis Straits,
Ingolf Exp., St. 101-103.
C. spinosum, (Goodsir). *Norway.*
C. tenellum, G. O. Sars. *South of Ireland,*
Ingolf Exp., St. 7.
Boreonymphon robustum, (Bell). *"Triton," St. 9, 608 f.*
Davis Straits.

Paranymphon spinosum, Caullery.	<i>Davis Straits.</i>
Pallene brevirostris, (Johnst.).	<i>Plymouth, Jersey,</i> <i>Cumbrae,</i> <i>Firth of Forth, etc.</i>
Pseudopallene circularis, (Goodsir).	<i>Labrador, North of</i> <i>Iceland, Ingolf Exp.</i>
<i>P. intermedia</i> , Kr.	<i>Iceland, Diana Exp.,</i> <i>1884, 5-15 f.</i>
<i>P. spinipes</i> , Kr.	<i>Egedesmunde,</i> <i>Greenland.</i>
Pallenopsis Hoekii, Miers.	<i>Torres Straits.</i>
Cordylochele longicollis, G. O. Sars.	<i>Davis Straits,</i> <i>Ingolf Exp., St. 27.</i>
<i>C. malleolata</i> , G. O. Sars.	<i>Ingolf Exp., St. 81.</i>
Phoxichilidium femoratum, (Rathke).	<i>Upernavik, Britain.</i>
<i>P. angulatum</i> , Dohrn.	<i>Naples.</i>
Anoplodactylus petiolatus, (Kr.).	<i>Plymouth,</i> <i>Firth of Forth.</i>
Eurycyde hispida, Kr.	<i>Davis Straits.</i>
Ascorhynchus tenuirostris, G. H. C.	<i>Torres Straits, 15 f.</i>
<i>A. tridens</i> , Mein.	<i>Ingolf Exp.,</i> <i>St. 112-113.</i>
Barana arenicola, Dohrn.	<i>Naples.</i>
Colossendeis augusta, G. O. Sars.	<i>"Triton," St. 8,</i> <i>640 f</i>
<i>C. colossea</i> , Wilson.	<i>Ingolf Exp., St. 18</i>
<i>C. proboscidea</i> , (Sab.).	<i>Ingolf Exp., St. 116.</i>
Ammothea echinata, (Hodge).	<i>Plymouth.</i>
<i>A. fibulifera</i> , Dohrn.	<i>Naples.</i>
<i>A. franciscana</i> , Dohrn.	"
<i>A. Langii</i> , Dohrn.	"
<i>A. magnirostris</i> , Dohrn.	"
Clotenia conirostris, Dohrn.	"
Rhynchothorax mediterraneus, Dohrn.	"
Phoxichilus spinosus, (Mont.).	<i>Plymouth, Jersey,</i> <i>Roundstone, Cumbrae.</i>
<i>P. vulgaris</i> , Dohrn.	<i>Naples.</i>
Pycnogonum crassirostre, G. O. Sars.	<i>Dyrefjord, Iceland.</i>
<i>P. littorale</i> , Ström.	<i>Labrador, Gulf of</i> <i>St. Lawrence, 100 f.,</i> <i>Britain.</i>

ADDENDA.

The following Australian Species were received, by the kindness of Mr. S. W. Fulton of Melbourne, while this Catalogue was being printed

Nectocarcinus tuberculatus, A. M.-E.	<i>Port Philip.</i>
Carcinus mænas, (L.).	„
Litocheira bispinosa, Kinahan.	„
Macrophthalmus latifrons, Haswell.	<i>Westernport, Victoria.</i>
Chasmagnathus convexus, Haswell.	<i>Port Philip.</i>
C. gaimardi, M.-E.	„
C. quadridentatus, M.-E.	„
Heterograpsus octodentatus, M.-E.	„
Utica crassimana, Haswell.	„
Hymenosoma rostratum, Hasw.	„
H. varium, Dana.	„
Halimus truncatipes, Miers.	<i>Westernport, Victoria.</i>
Ebalia (Philyxia) intermedia, Miers.	<i>Port Philip.</i>
Philyra lævis, Bell.	„
Galathea australiensis, Stps.	<i>Westernport, Victoria.</i>
Petrocheles australiensis, Miers.	<i>Port Philip.</i>
Paguristes frontalis, M.-E.	„
P. subpilosus, Hend.	<i>Westernport, Victoria.</i>
Axius plectorhynchus, Strahl.	<i>Port Philip.</i>
Alpheus socialis, Heller.	„
A. villosus, Olivier.	„