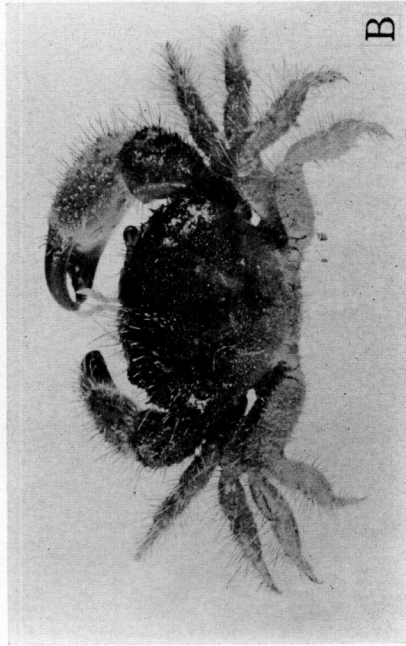
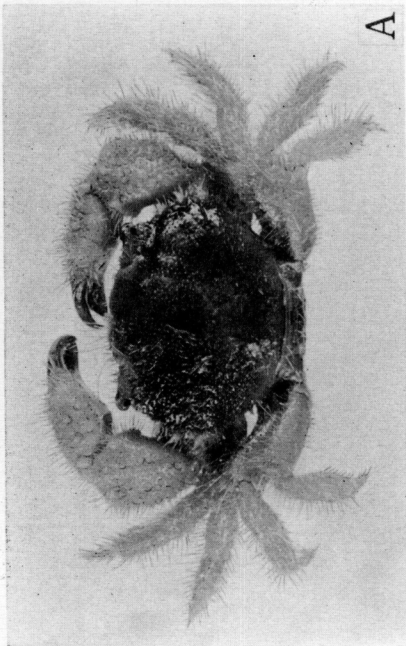
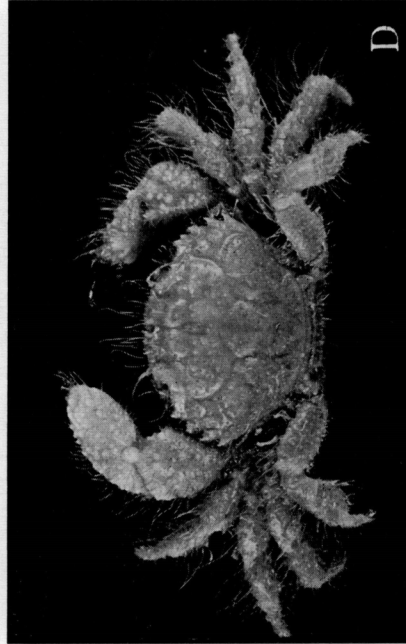
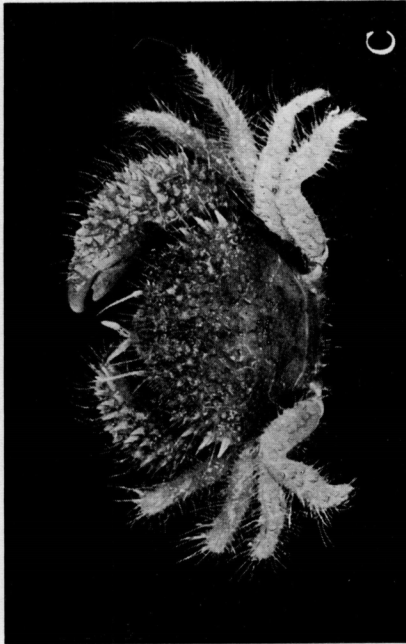


Explanation of Plate 2.

- Fig. A. *Pilumnus prunosus* Whitelegge; ♂ (8.1×11.0 mm) from Palau Is.
Fig. B. *Pilumnus purpureus* A. Milne Edwards; ♂ (10.5×13.7 mm) from Ryukyu Is.
Fig. C. *Pilumnus amamensis* sp. nov.; Holotype, ♂ (6.7×7.7 mm) from Ryukyu Is.
Fig. D. *Pilumnus caeruleus* A. Milne Edwards; ♂ (8.1×11.3 mm) from Palau Is.



Explanation of Plate 3.

- Fig. A. *Pilumnus parvulus* Nobili; Ovig. ♀ (5.6×8.1 mm) from Palau Is.
Fig. B. *Pilumnus orbitospinis* Rathbun; ♂ (14.0×17.9 mm) from Tosa Bay, Japan.
Fig. C. *Pilumnus ransoni* Forest et Guinot; ♂ (7.0×9.4 mm) from Ryukyu Is.
Fig. D. *Pilumnus guinotae* sp. nov.; Holotype, ♂ (8.0×10.7 mm) from Palau Is.