

Fig. 2. A. *Trizopagurus strigatus* (Herbst), female;
B. *Paguristes acanthomerus* Ortmann, male;
C. *Sculptolithodes derjugini* Makarov, male;
D. *Orthopagurus minimus* (Holmes), ovigerous female; scale lines : 10mm

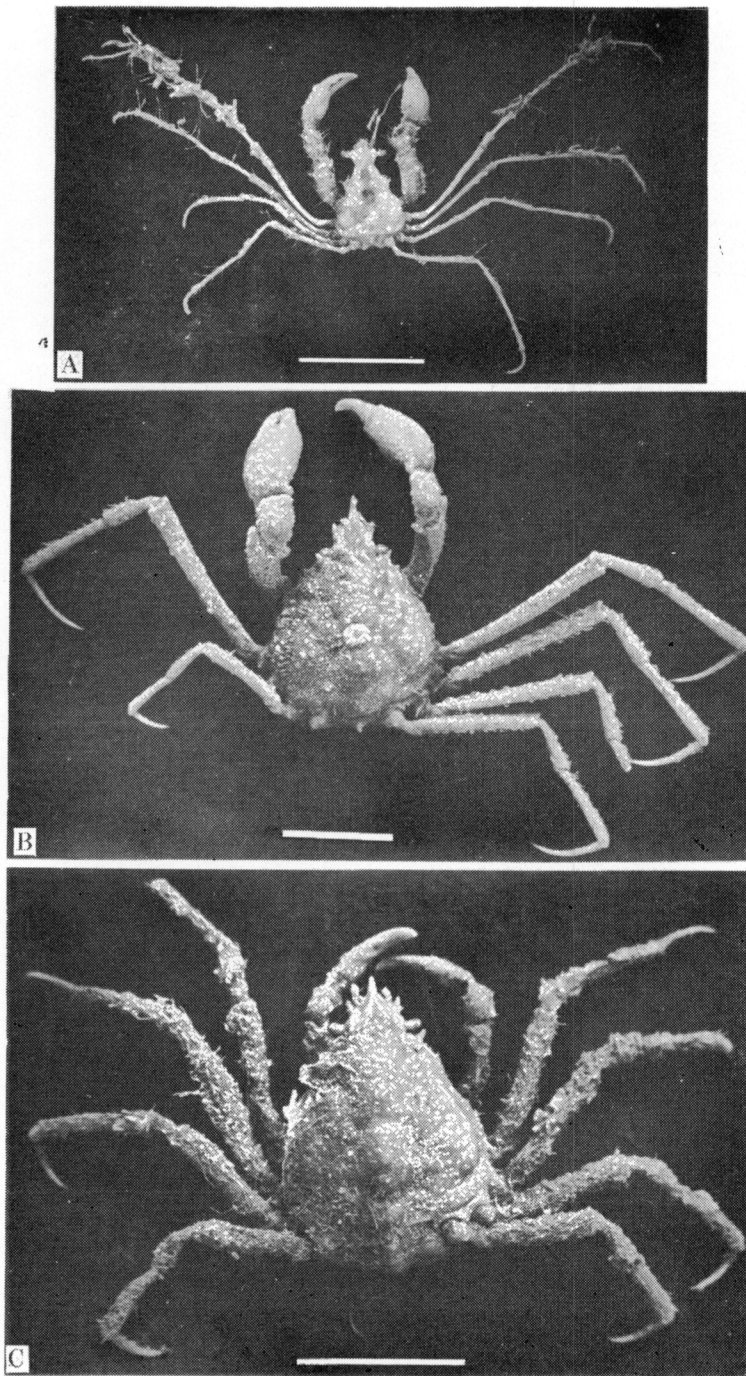


Fig. 3. A. *Achaeus spinosus* Miers, male; B-C. *Pyromaia tuberculata* (Lockington). B. male, C. female; scale lines : 10mm.

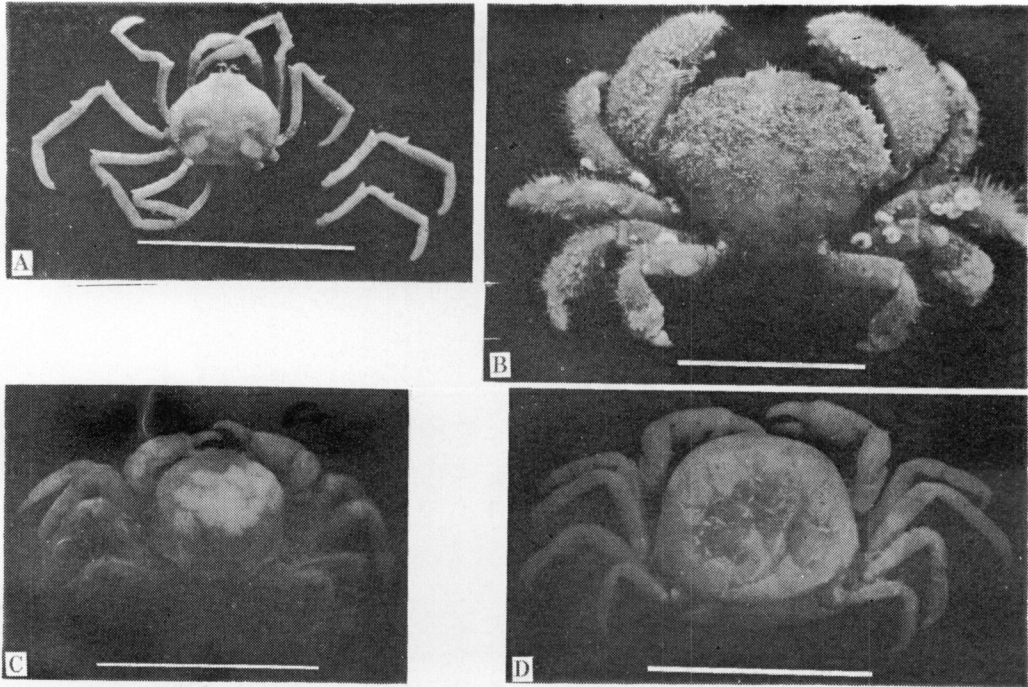


Fig. 4. A. *Elamena truncata* (Simpson), male; B. *Actumnus elegans* De Man, female; C-D. *Pinnotheres tsingtaoensis* Shen, C. male, D. female; scale lines: 10mm.