

Fig. 42. *Pagurus nigrofascia* Komai, 1996: ♂, SL = 5.55 mm, Tsukumo Bay, Noto Peninsula, OMNH Ar 2135-2136. A, left second pereopod, lateral; B, same, dactyl and distal portion of propodus, mesial; C, same, carpus, mesial; D, right second pereopod, mesial; E, same, dactyl and propodus, mesial; F, left third pereopod, lateral; G, same, dactyl and distal margin of propodus, mesial; H, same, propodus, mesial. Setae omitted in C, E, G. Scales equal 1 mm.

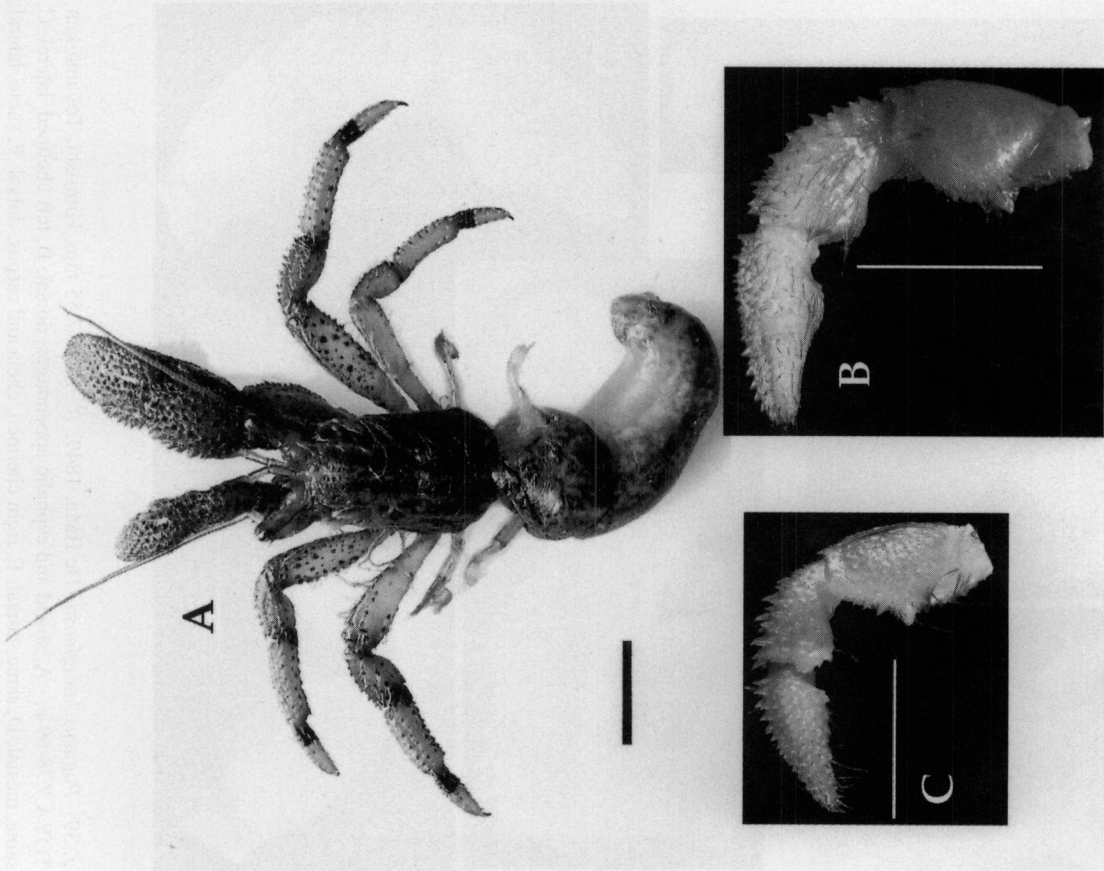


Fig. 41. *Pagurus nigrofascia* Komai, 1996: A, ♂, Fukuoka-ken, photo and copyright by Shinji Mishima; B, C, ♂, SL = 5.55 mm, Tsukumo Bay, Noto Peninsula, OMNH Ar 2135-2136. A, whole animal; B, right cheliped, mesial; C, left cheliped, lateral. Scales equal 5 mm.

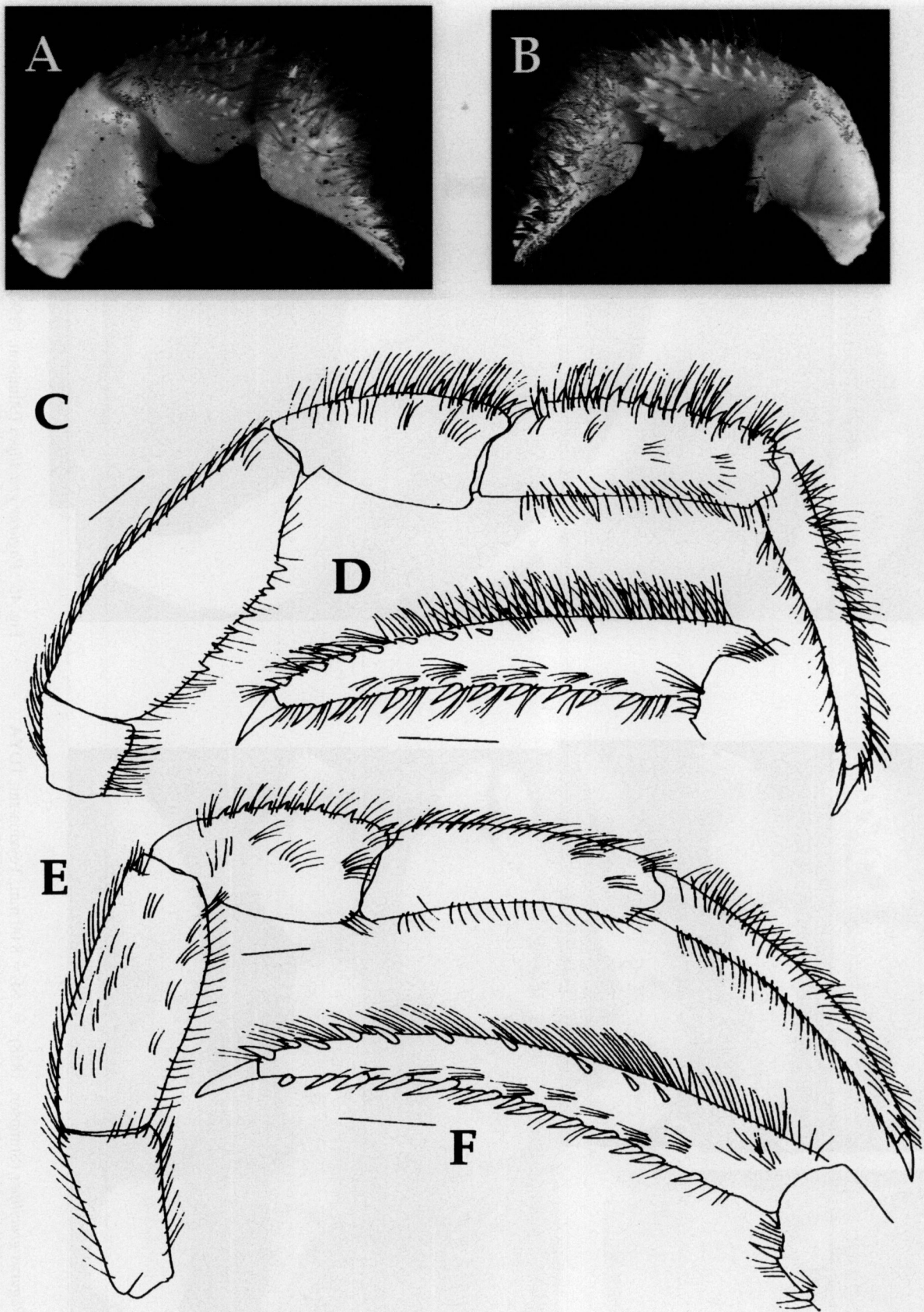


Fig. 43. *Pagurus constans* (Stimpson, 1858): ♀, SL = 5.10 mm, Nishihama, Yamagata-ken, YPM-SS 1546. A, right cheliped, lateral; B, same, mesial; C, right second pereopod, lateral; D, same, dactyl and distal margin of propodus, mesial; E, right third pereopod, lateral; F, same, dactyl and distal margin of propodus, mesial. Scales equal 1 mm.

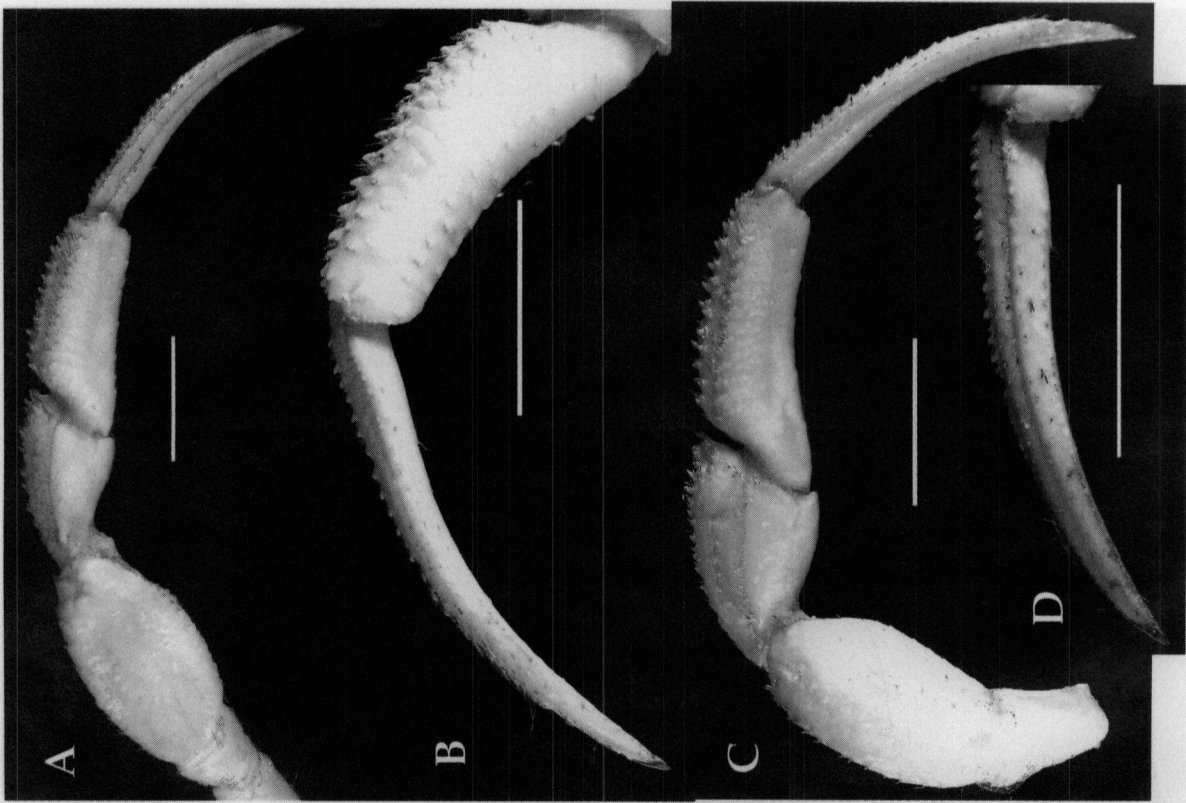


Fig. 45. *Pagurus gracilipes* (Stimpson, 1858): ♀, SL = 8.00 mm, Toyama-shi, TOYA Z90- 21-b. A, right second pereopod, lateral; B, same, dactyl and propodus, mesial; C, right third pereopod, lateral; D, same, dactyl, mesial. Scales equal 5 mm.



Fig. 44. *Pagurus gracilipes* (Stimpson, 1858): ♀, SL = 8.00 mm, Toyama-shi, TOYA Z90- 21-b. A, shield and cephalic appendages, dorsal; B, chela of left cheliped, dorsal; C, same, lateral; D, same, mesial; E, right cheliped, dorsal; F, same, mesial; G, same, lateral. Scales equal 5 mm.



Fig. 46. *Pagurus nipponensis* (Yokoya, 1933): ♂, SL = 6.90 mm, Miyazu-shi, Kyoto-fu, CBM-ZC 8450. A, shield and cephalic appendages, dorsal; B, left cheliped, lateral (slightly dorsally); C, same, dorsal; D, same, mesial (slightly ventral). Scales equal 5 mm.

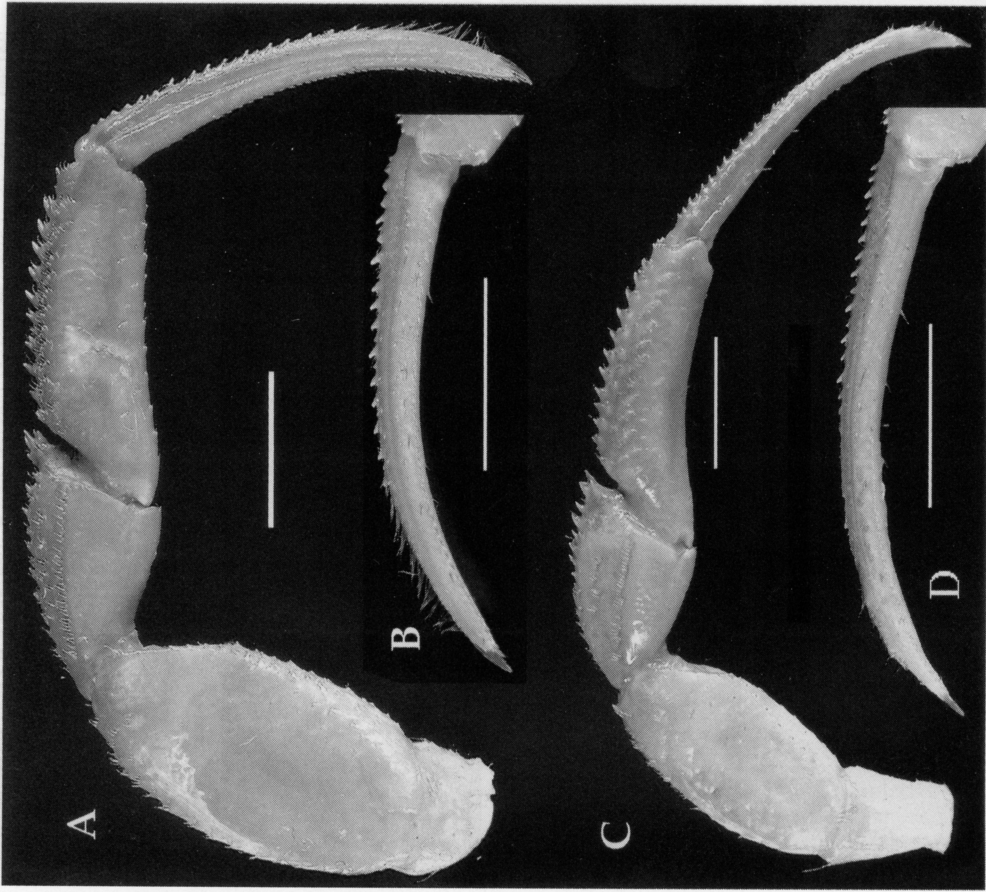


Fig. 47. *Pagurus nipponensis* (Yokoya, 1933): ♂, SL = 6.90 mm, Miyazu-shi, Kyoto-fu, CBM-ZC 8450. A, right second pereopod, lateral; B, same, dactyl, mesial; C, right third pereopod, lateral; D, same, dactyl, mesial. Scales equal 5 mm.

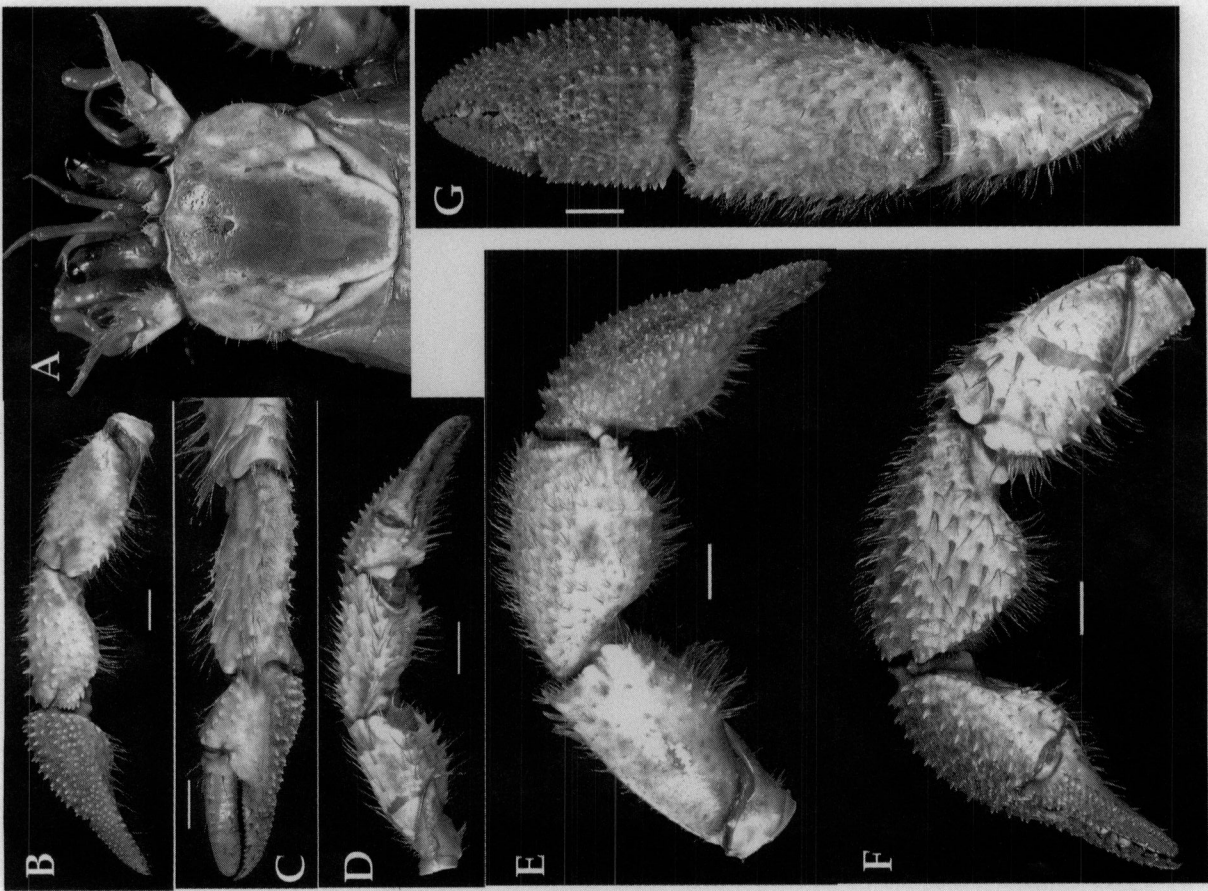


Fig. 48. *Pagurus trigonocheirus* (Stimpson, 1858): ♂, SL = 18.65 mm, Toyama Bay, Toyama-ken, TOYA Z88-28-b. A, shield and cephalic appendages, dorsal; B, left cheliped, lateral; C, same, dorsal; D, same, mesial; E, right cheliped, lateral; F, same, dorsal; G, same, dorsal. Scales equal 5 mm.



Fig. 49. *Pagurus trigonocheirus* (Stimpson, 1858): ♂, SL = 18.65 mm, Toyama Bay, Toyama-ken, TOYA Z88-28-b. A, left second pereopod, lateral; B, same, dactyl, mesial; C, same, propodus and carpus, mesial.

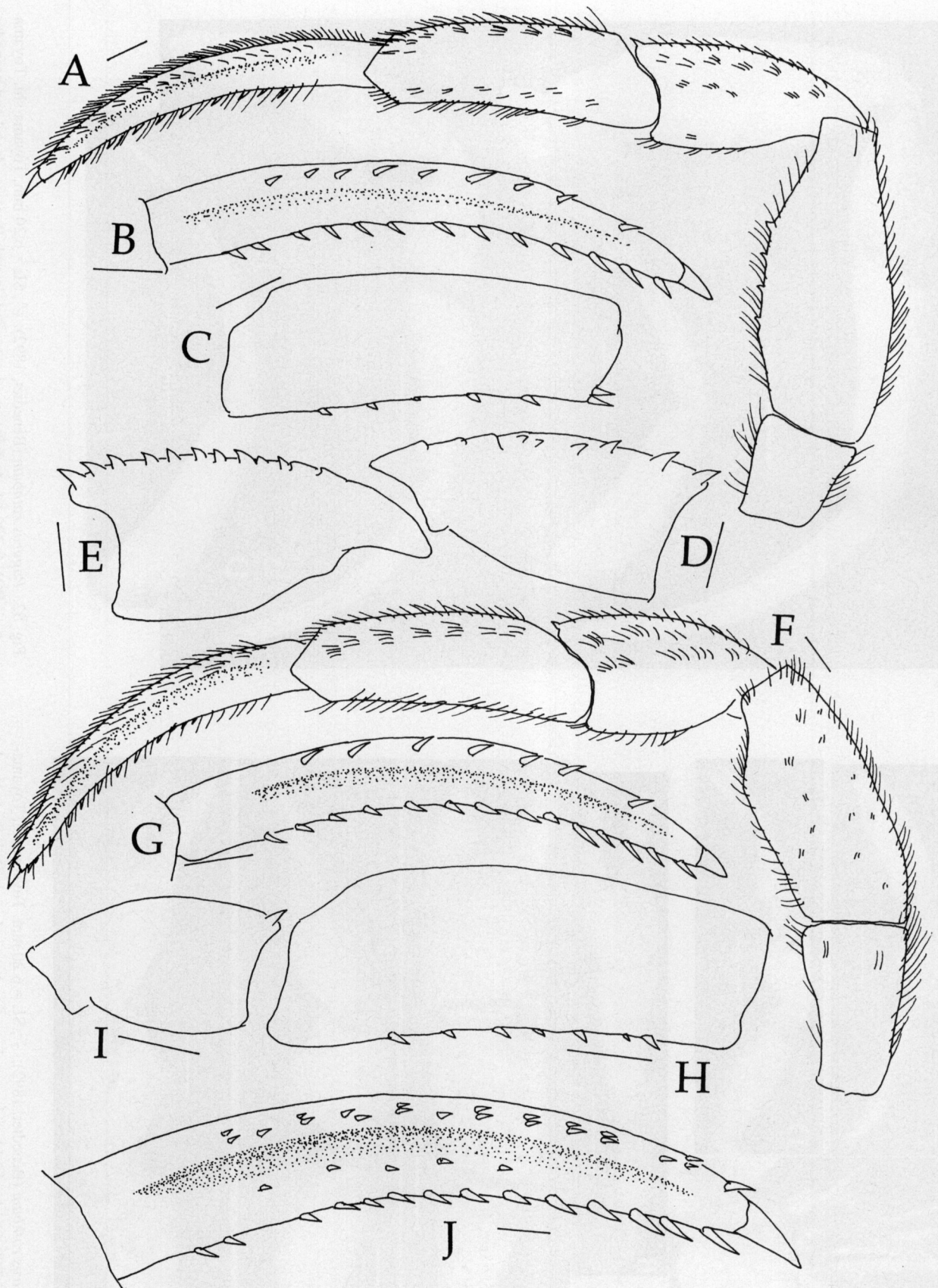


Fig. 50. *Pagurus trigonocheirus* (Stimpson, 1858): A-I, ♂, SL = 5.95 mm, Toyama Bay, Toyama-ken, TOYA Z88-1; J, ♂, SL = 12.80 mm, SBL-H-8, Bering Sea, acc. no. 282239, USNM. A, left second pereopod, lateral; B, same, dactyl, mesial; C, same, propodus, mesial; D, same, carpus, mesial; E, right second pereopod, carpus, mesial; F, left third pereopod, lateral; G, same, dactyl, mesial; H, same, propodus; I, carpus, mesial; J, left second pereopod, dactyl, mesial. Setae omitted in B-E, G-J. Scales equal 1 mm.

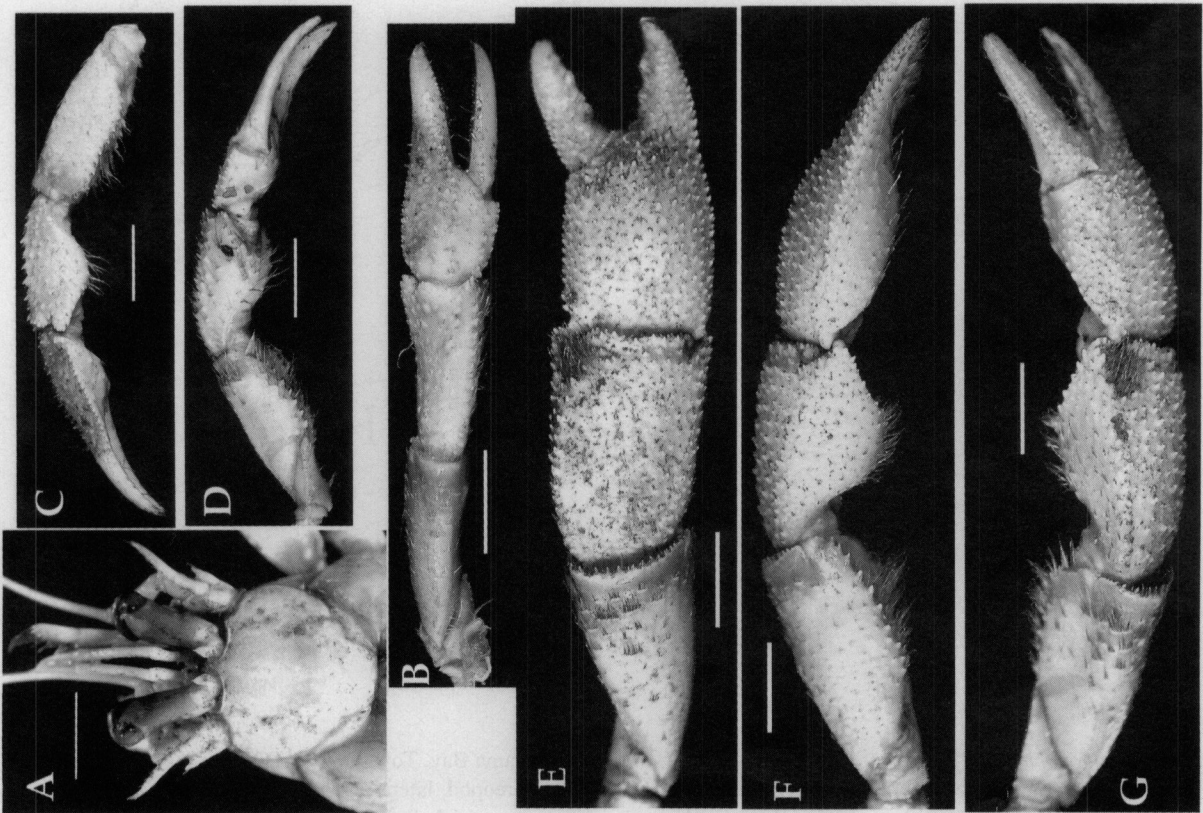


Fig. 51. *Pagurus rathbuni* (Benedict, 1892): ♂, SL = 6.20 mm, Toyama-shi, Toyama-ken, TOYA Z90-61. A, shield and cephalic appendages, dorsal; B, left cheliped, dorsal; C, same, lateral; D, same, mesial; E, right cheliped, dorsal; F, same, lateral; G, same, mesial. Scales equal 5 mm.



Fig. 52. *Pagurus rathbuni* (Benedict, 1892): ♂, SL = 6.20 mm, Toyama-shi, Toyama-ken, TOYA Z90-61. A, left second pereopod, lateral; B, same, dactyl and propodus, mesial; C, left third pereopod, lateral; D, same, dactyl and propodus, mesial. Scales equal 5 mm.

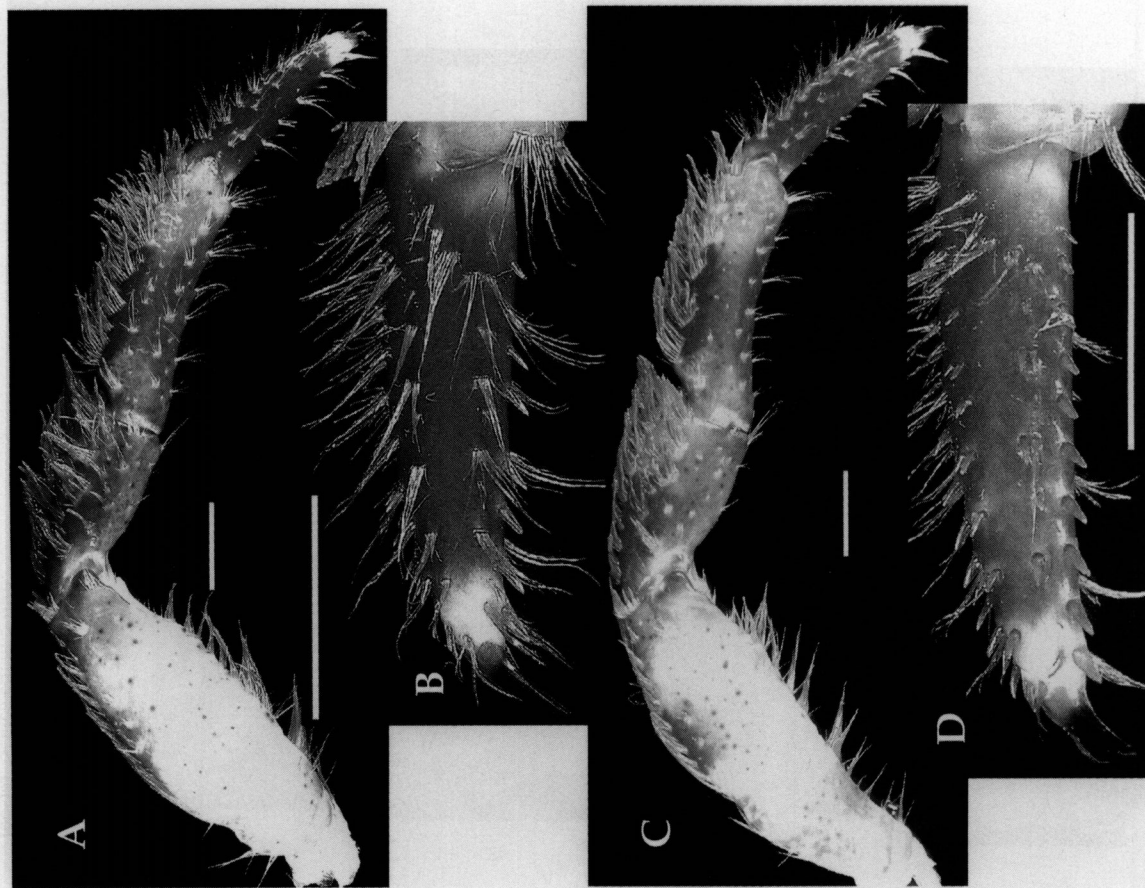


Fig. 54. *Pagurus japonicus* (Stimpson, 1858): ♂, SL = 18.30 mm, Miyazu-shi, Kyoto-fu, CBM-ZC 8459. A, right second pereopod, lateral; B, same, dactyl, mesial; C, right third pereopod, lateral; D, same, dactyl, mesial. Scales equal 5 mm.

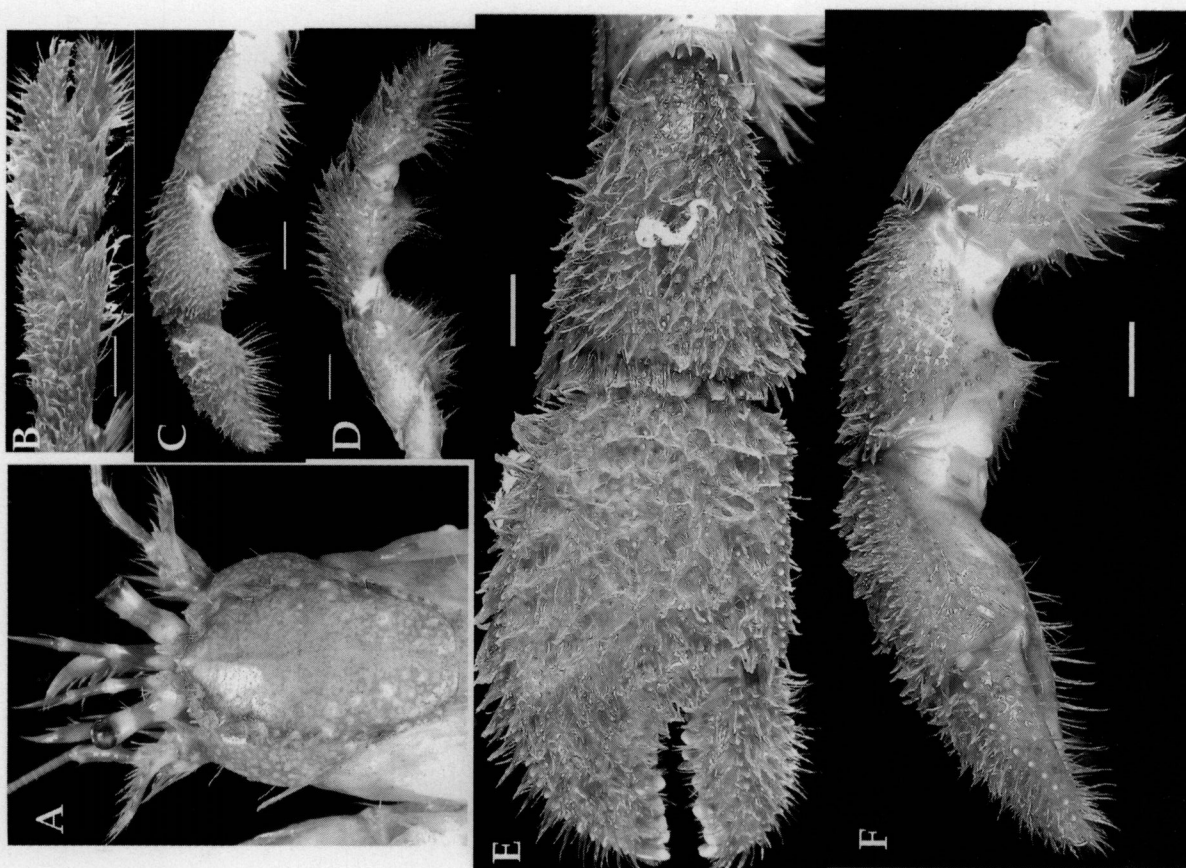


Fig. 53. *Pagurus japonicus* (Stimpson, 1858): ♂, SL = 18.30 mm, Miyazu-shi, Kyoto-fu, CBM-ZC 8459. A, shield and cephalic appendages, dorsal; B, left cheliped, chela and carpus, dorsal; C, same, lateral; D, same, mesial; E, right cheliped, chela and carpus, dorsal; F, same, mesial. Scales equal 5 mm.