



Fig. 55. *Pagurus rubrior* Komai, 2003: ♂, SL = 11.55 mm, Miyazu-shi, Kyoto-fu, CBM-ZC 8454. A, shield and cephalic appendages, dorsal; B, right cheliped, chela and carpus, dorsal; C, same, lateral; D, same, mesial. Scales equal 5 mm.



Fig. 56. *Pagurus rubrior* Komai, 2003: ♂, SL = 11.55 mm, Miyazu-shi, Kyoto-fu, CBM-ZC 8454. A, left cheliped, dorsal (slightly lateral); B, same, lateral; C, same, mesial; D, right third pereopod, lateral; E, same, dactyl and distal half of propodus, mesial. Scales equal 5 mm.

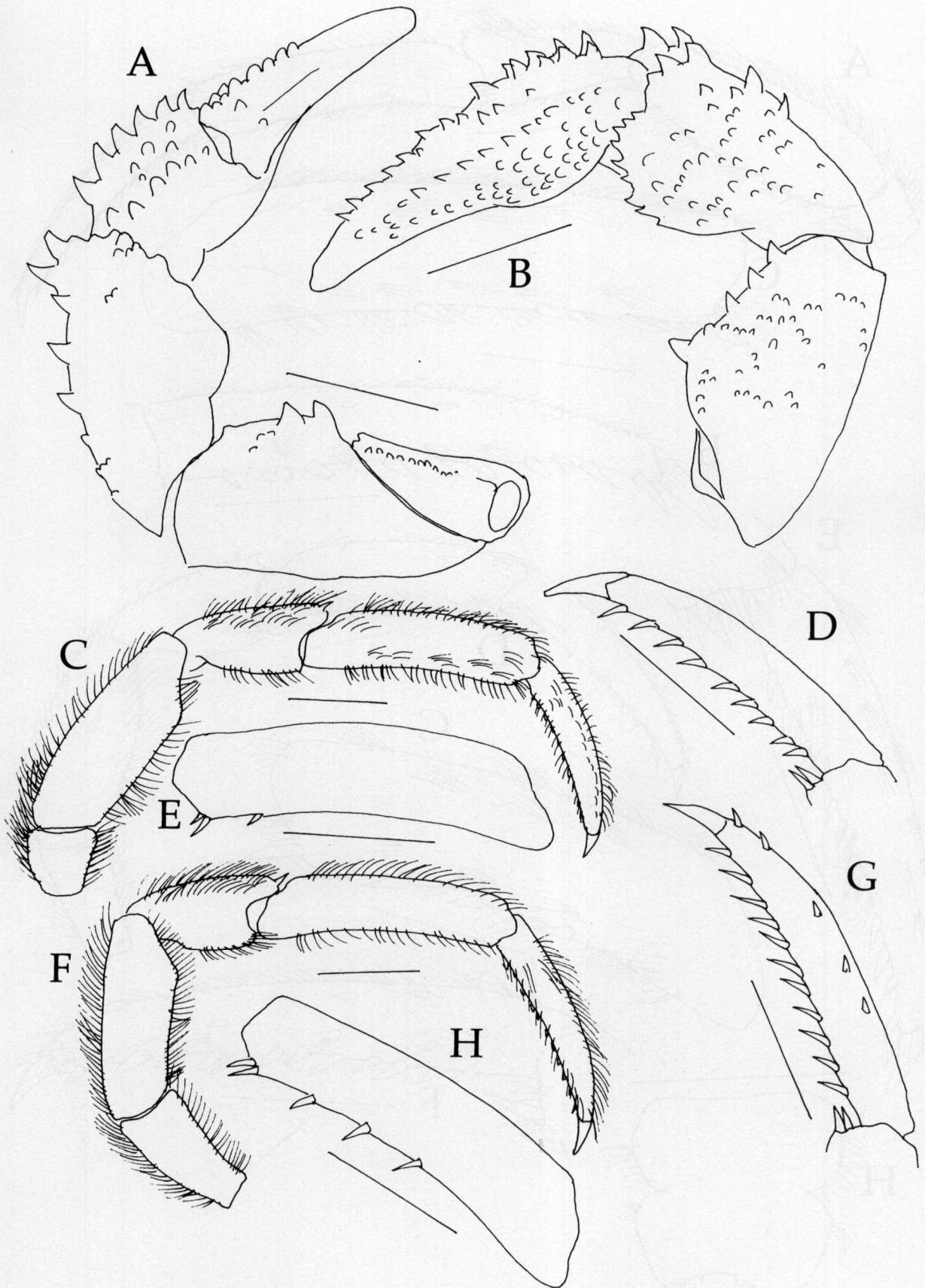


Fig. 57. *Pagurus* cf. *nigrivittatus*: ♀, SL = 2.75 mm, Kanmuri-jima Island, Kyoto-fu, CBM-ZC 8468. A, left cheliped, mesial; B, same, lateral; C, right second pereopod, lateral; D, same, dactyl and distal margin of propodus, mesial; E, same, propodus, mesial; F, right third pereopod, lateral; G, same, dactyl and distal margin of propodus, mesial; H, propodus, mesial. Setae omitted in A, B, D, E, G, and H. Scales equal 1 mm.

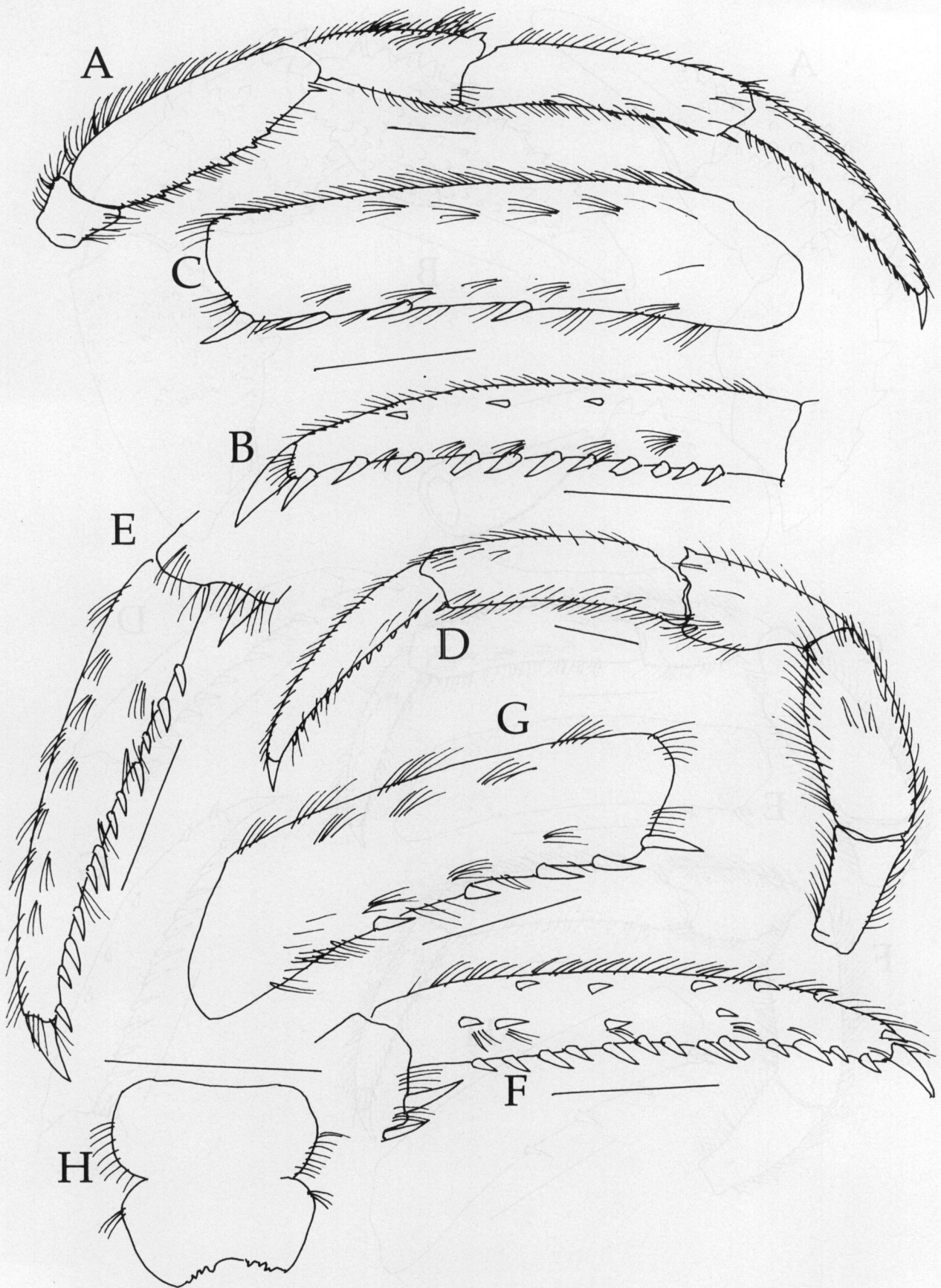


Fig. 58. *Pagurus quinquelineatus* Komai, 2003: ♂, SL = 2.90 mm, Kanmuri-jima Island, Kyoto-fu, CBM-ZC 8467. A, right second pereopod, lateral; B, same, dactyl, mesial; C, same, propodus, mesial; D, left third pereopod, lateral; E, same, dactyl and distal margin of propodus, lateral; F, same, dactyl and distal margin of propodus, mesial; G, same, propodus, mesial; H, telson, dorsal. Scales equal 5 mm.

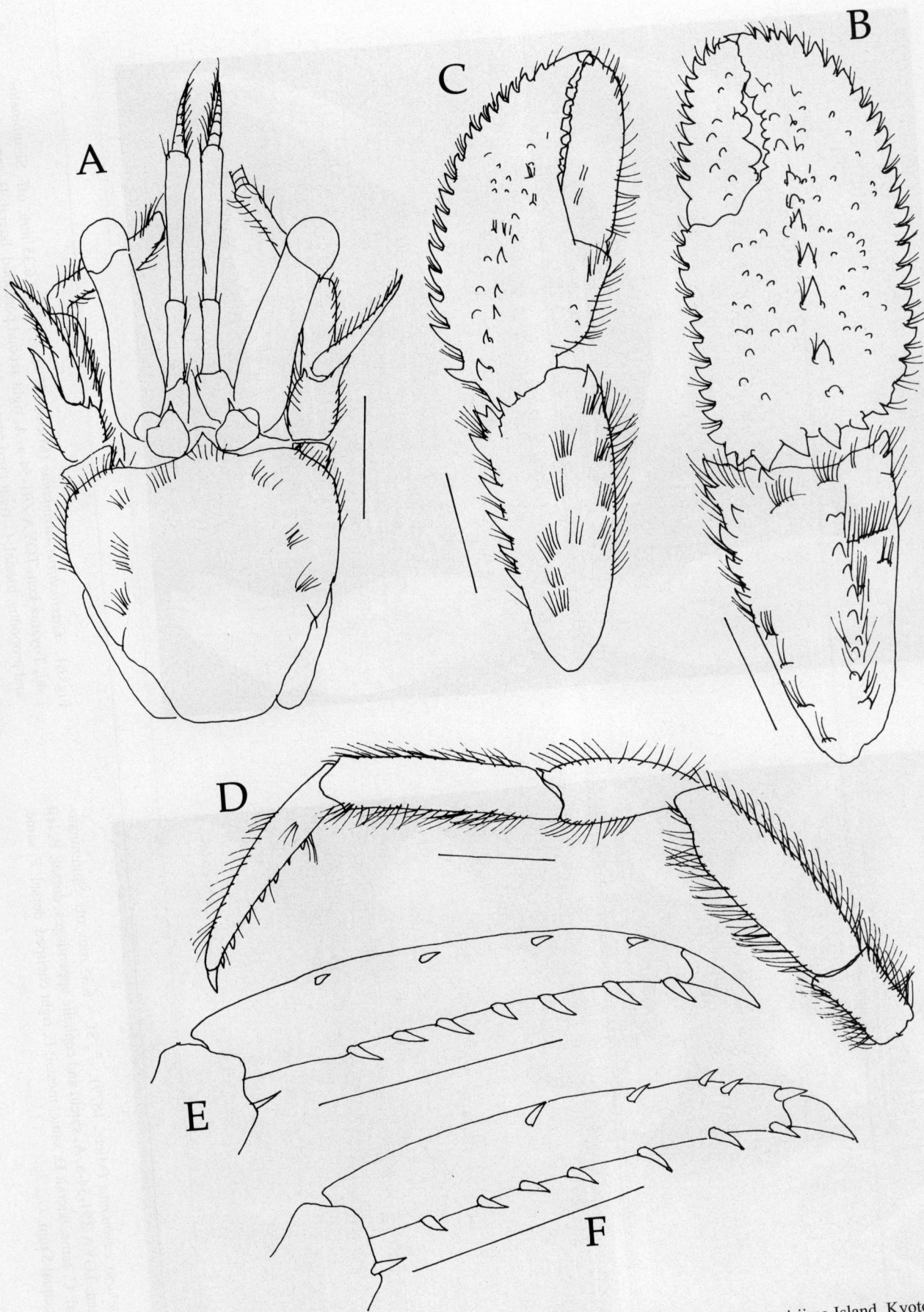


Fig. 59. *Lophopagurus (Australeremus) triserratus* (Ortmann, 1892): ♀, SL = 2.15 mm, Kanmuri-jima Island, Kyoto-fu, CBM-ZC 8462. A, shield and cephalic appendages, dorsal; B, chela and carpus of right cheliped, dorsal; C, chela and carpus of left cheliped, dorsal; D, left second pereopod, mesial; E, same, dactyl and distal margin of propodus, mesial; F, left third pereopod, dactyl and distal margin of propodus, mesial. Setae omitted in E and F. Scales equal 1 mm.

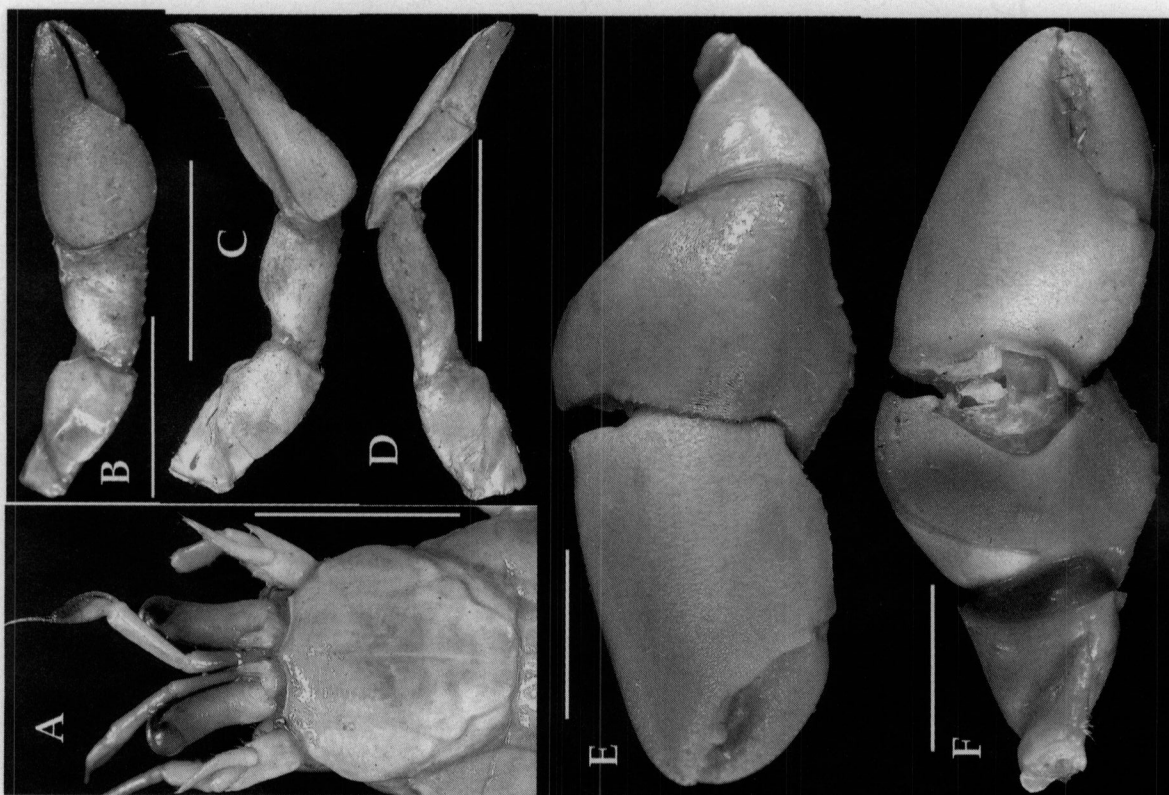


Fig. 60. *Ellassochirus cavimanus* (Miers, 1879): ♂, SL = 6.35 mm, off Shinminato-shi, Toyama-ken, TOYA Z91-54-a. A, shield and cephalic appendages, dorsal; B, left cheliped, dorsal; C, same, lateral; D, same, mesial; E, right cheliped, dorsal; F, same, ventral. Scales equal 5 mm.



Fig. 61. *Ellassochirus cavimanus* (Miers, 1879): ♂, SL = 6.35 mm, off Shinminato-shi, Toyama-ken, TOYA Z91-54-a. A, right second pereopod, lateral; B, same, dactyl and propodus, mesial; C, right third pereopod, lateral; D, same, dactyl, mesial.

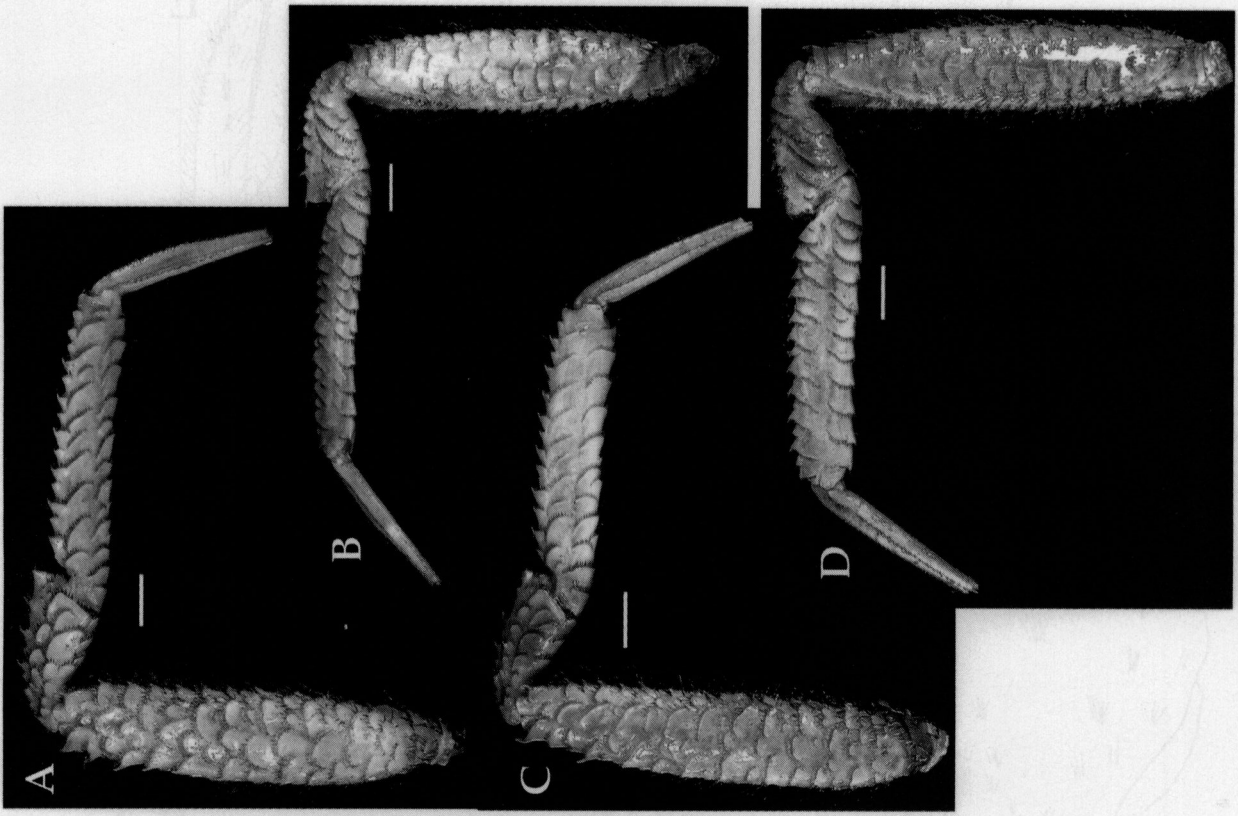


Fig. 63. *Labidochirus anomalus* (Balss, 1913): ♂, SL = 17.45 mm, Ishikawa-ken, KMNH 16801. A, right second pereopod, lateral; B, same, mesial; C, right third pereopod, lateral; D, same, mesial. Scales equal 5 mm.

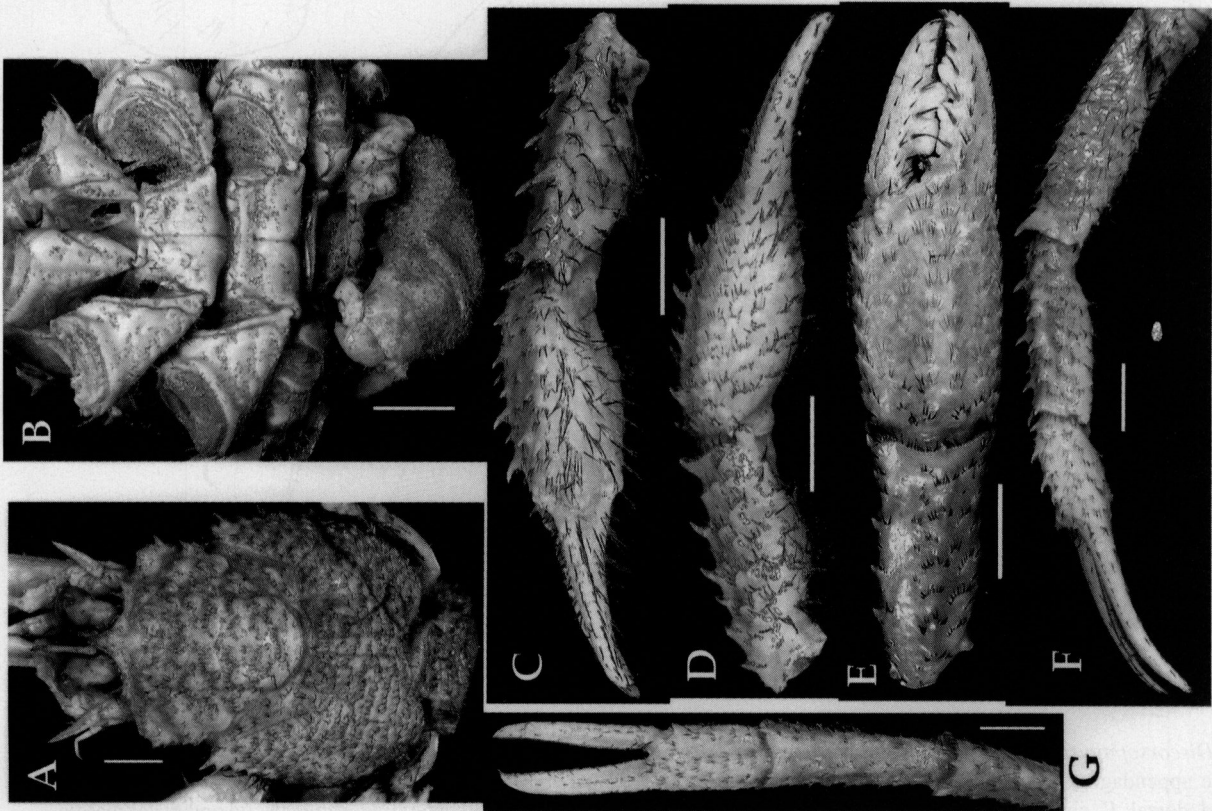


Fig. 62. *Labidochirus anomalus* (Balss, 1913): ♂, SL = 17.45 mm, Ishikawa-ken, KMNH 16801. A, carapace and cephalic appendages, dorsal; B, ventral face of body; C, chela and carpus of right cheliped, mesial; D, same, lateral; E, same, dorsal; F, left cheliped, lateral; G, same, dorsal. Scales equal 5 mm.

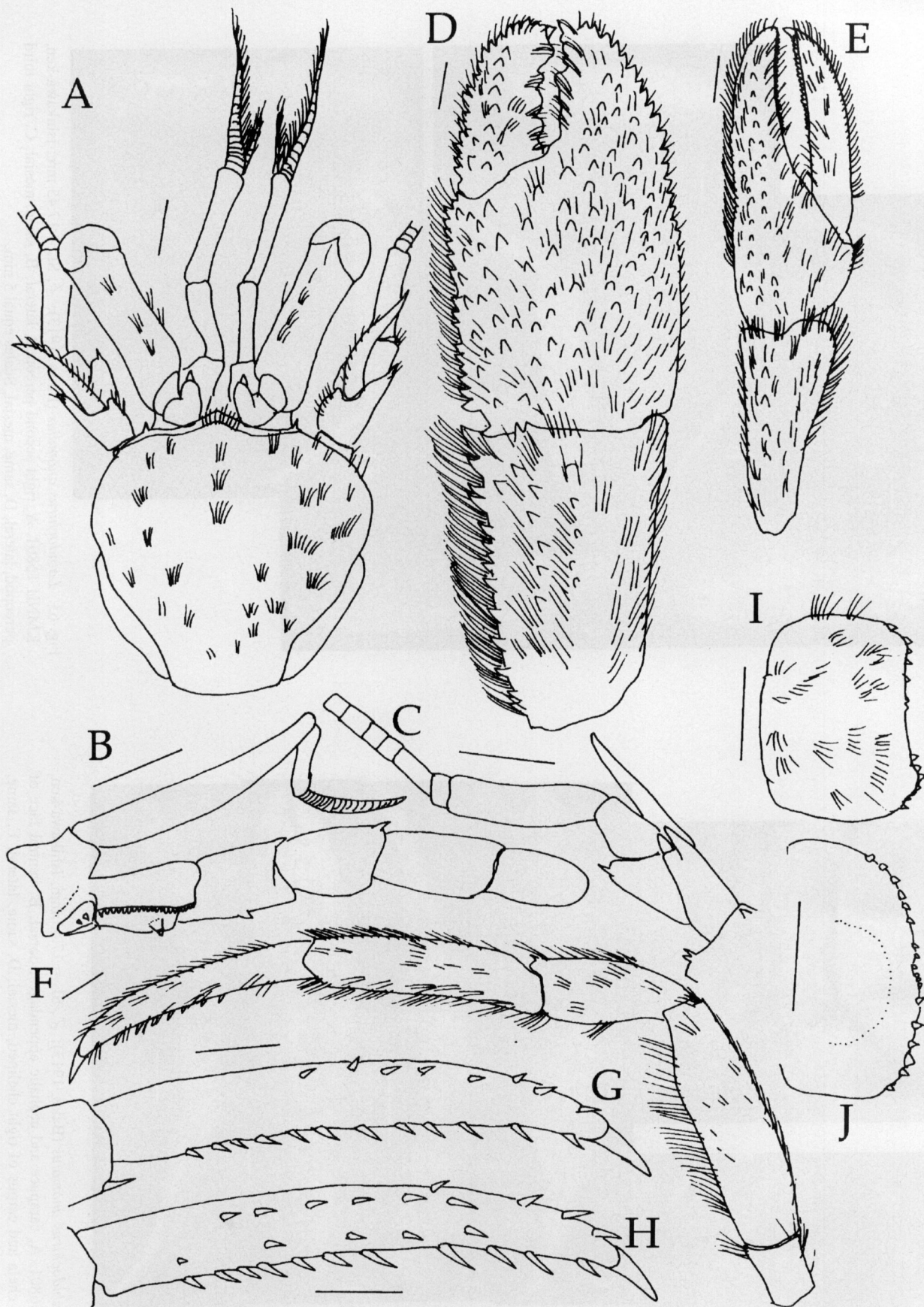


Fig. 64. *Discorsopagurus maclaughlinae* Komai, 1995: ♂, SL = 4.75 mm, Sudzukhe Bay, Russia, USNM 72366. A, shield and cephalic appendages, dorsal; B, left third maxilliped, outer; C, left antennal peduncle, lateral; D, chela and carpus of right cheliped, dorsal; E, chela and carpus of left cheliped, dorsal; F, left second pereopod, lateral; G, same, dactyl and distal margin of propodus, mesial; H, left third pereopod, dactyl and distal margin of propodus, mesial. I, telson, dorsal; J, same, ventral. Scales equal 1 mm

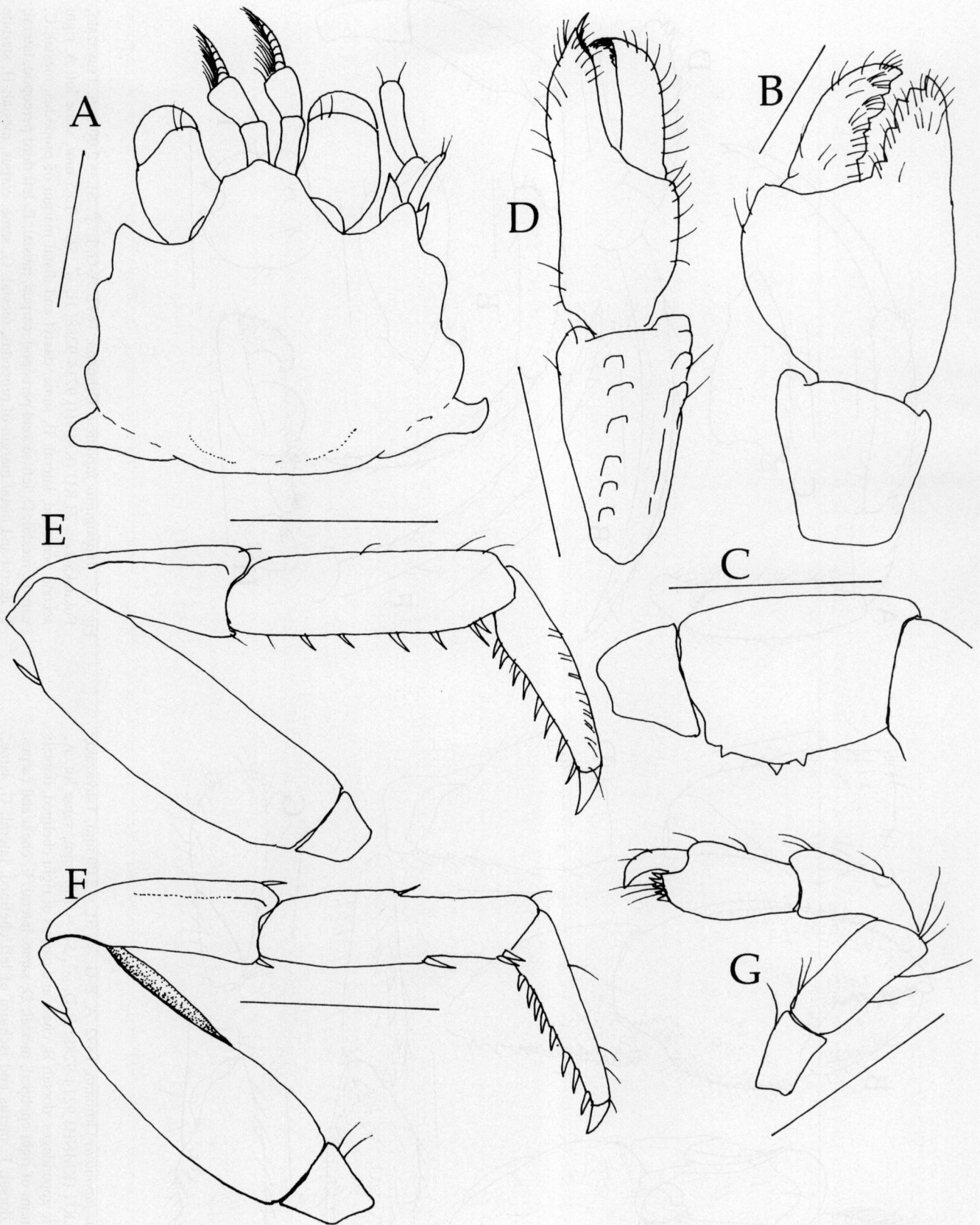


Fig. 65. *Porcellanopagurus nihonkaiensis* Takeda, 1985: ♀, SL = 1.95 mm, Munakata-oshima Island, Fukuoka-ken, ZLKU (KMNH) 7028. A, shield and cephalic appendages, dorsal; B, chela and carpus of right cheliped, dorsal; C, merus and ischium of right cheliped, lateral; D, chela and carpus of left cheliped, dorsal; E, right second pereopod, lateral; F, right third pereopod, lateral; G, left fourth pereopod, lateral. Scales equal 1 mm.



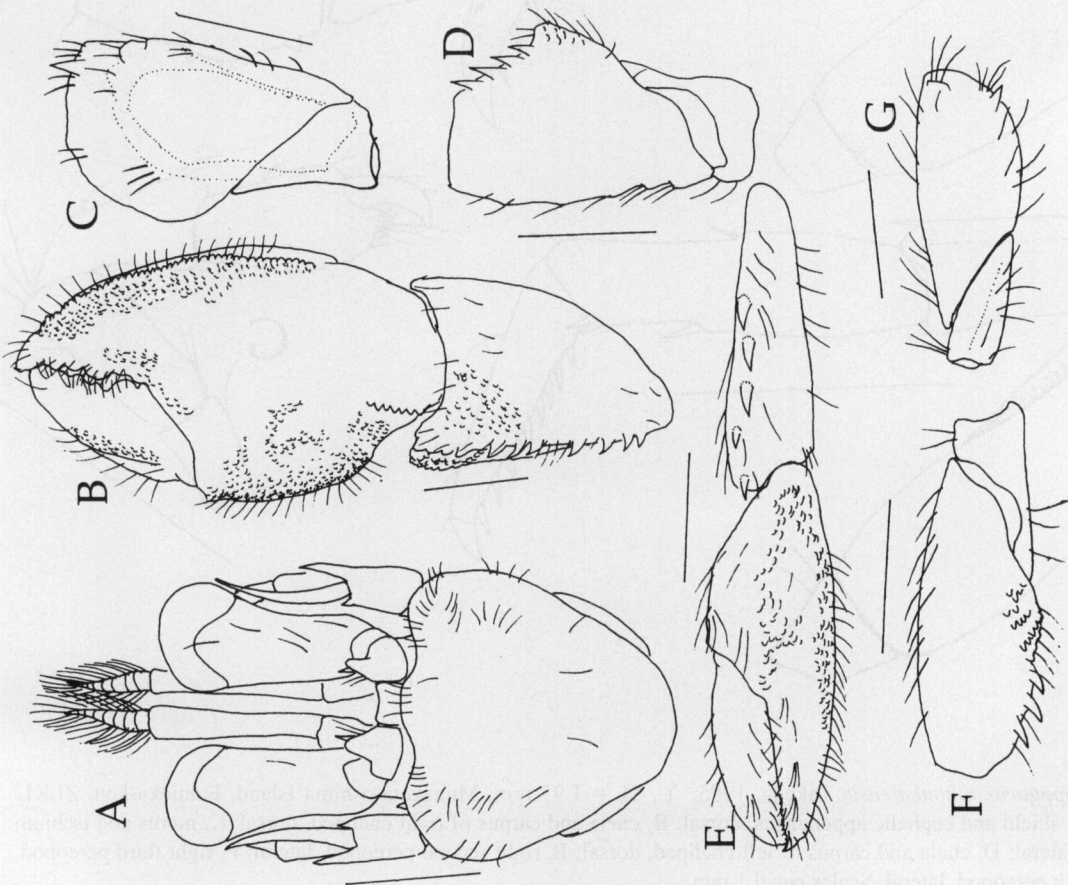


Fig. 66. *Anapagurus japonicus* Ortmann, 1892: A, E-G, ♂, SL = 2.00 mm, Tsuyazaki, Fukuoka-ken, ZLKU (KMNH) 9214-9288; B-D, ♂, SL = 1.85 mm, same lot. A, shield and cephalic appendages, dorsal; B, chela and carpus of right cheliped, dorsal; C, merus and ischium of right cheliped, mesial; D, same, lateral; E, chela and carpus of left cheliped, dorsal; F, merus and ischium of left cheliped, lateral; G, same, mesial. Scales equal 1 mm.

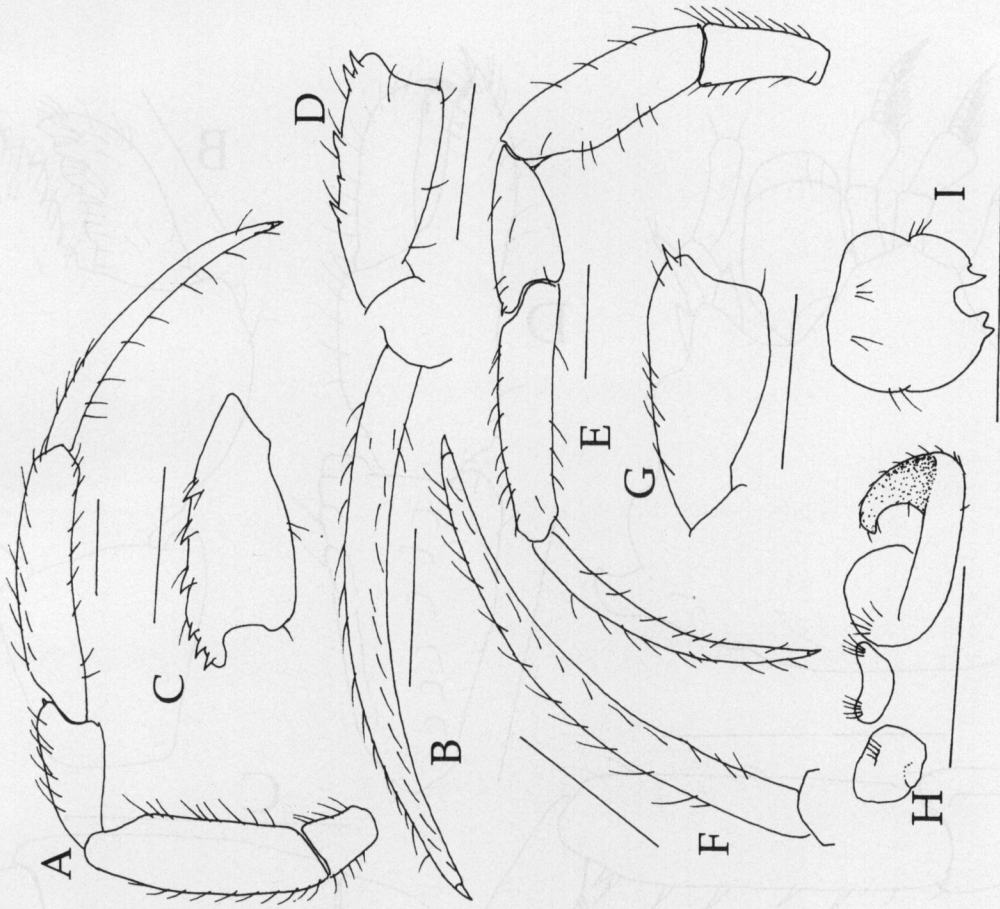


Fig. 67. *Anapagurus japonicus* Ortmann, 1892: A-G, I, ♂, SL = 2.00 mm, Tsuyazaki, Fukuoka-ken, ZLKU (KMNH) 9214-9288; H, ♂, SL = 1.85 mm, same lot. A, right second pereopod, lateral; B, same, dactyl and distal margin of propodus, mesial; C, carpus, mesial; D, left second pereopod, carpus, mesial; E, left third pereopod, lateral; F, dactyl and distal margin of propodus, mesial; G, same, carpus, mesial; H, sternite and coxae of fifth pereopod, ventral; I, telson, dorsal. Scales equal 1 mm.

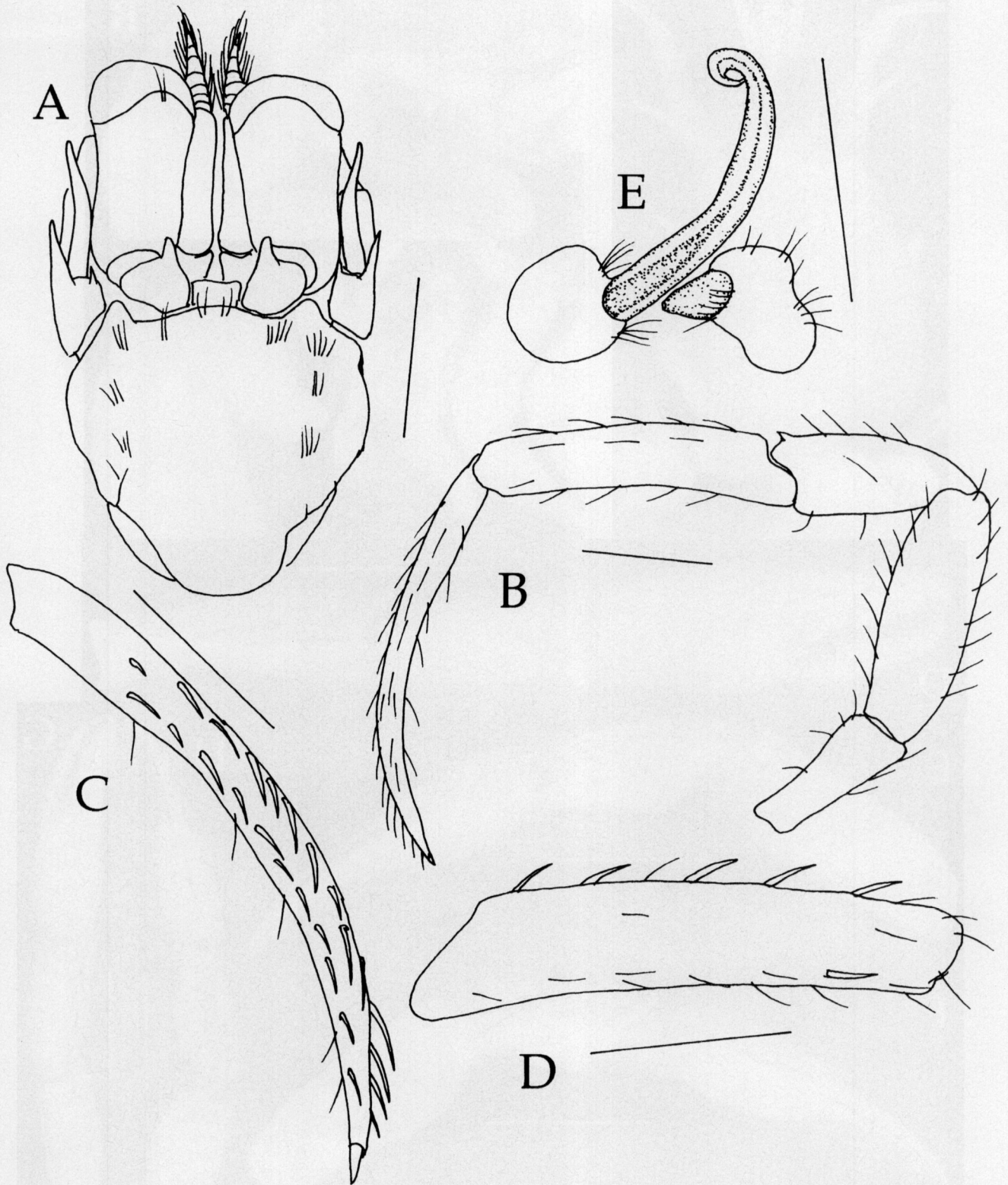


Fig. 68. *Nematopagurus tricarinatus* (Stimpson, 1858): ♂, SL = 1.85 mm, Tsuyazaki, Fukuoka-ken, ZLKU (KMNH) 9294. A, shield and cephalic appendages, dorsal; B, left third pereopod, lateral; C, same, dactyl, mesial; D, same, propodus, mesial; E, coxae of fifth pereopods, ventral. Scales equal 1 mm.

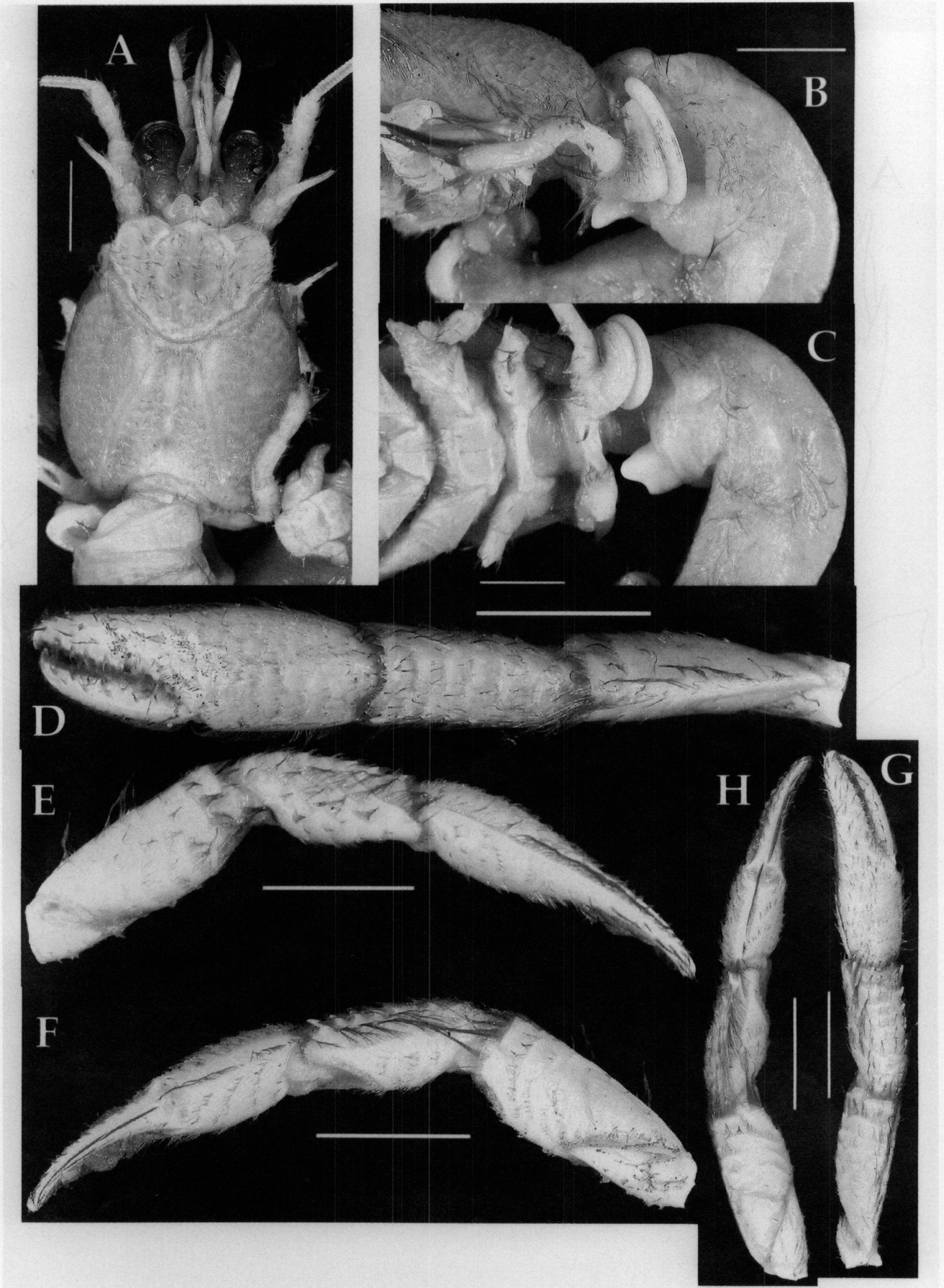


Fig. 69. *Spiropagurus spiriger* Ortmann, 1892: ♂, SL = 6.50 mm Toyama-shi, Toyama-ken, TOYA Z90-21-a. A, carapace and cephalic appendages, dorsal; B, lateral side of body (partial) showing sexual tube; C, ventral side of body (partial) showing sexual tube; D, right cheliped, dorsal; E, same, lateral; F, same, mesial; G, left cheliped, dorsal; H, same, mesial. Scales equal 5 mm.



Fig. 70. *Spiropagurus spiriger* Ortmann, 1892: ♂, SL = 6.50 mm Toyama-shi, Toyama-ken, TOYA Z90-21-a. A, left second pereopod, lateral; B, same, mesial; C, left third pereopod, lateral; D, same, mesial. Scales equal 5 mm.