

KCC Strategy-based Population Forecast (March 2014) - ASHFORD

Population aged 18+ and aged 17+

This file contains unit level data for calculation purposes. It is recommended that all data is rounded to the nearest 10 before publication.

This workbook prepared by presented by Business Intelligence, Research & Evaluation, Kent County Council

Colour coded to match accompanying map

Ward code	Ward Name	LA/UA code	LA/UA name	Proposed New Electoral Division	Electorate (Those aged 18+)	Electorate - including attainers (Those aged 17+)
E05004868	Beaver	E07000105	Ashford	AshfordED1	4,375	4,425
E05004884	Park Farm North	E07000105	Ashford	AshfordED1	2,190	2,241
E05004885	Park Farm South	E07000105	Ashford	AshfordED1	2,039	2,066
E05004891	Stanhope	E07000105	Ashford	AshfordED1	1,627	1,657
E05004896	Washford	E07000105	Ashford	AshfordED1	2,513	2,545
E05004867	Aylesford Green	E07000105	Ashford	AshfordED2	3,254	3,288
E05004878	Highfield	E07000105	Ashford	AshfordED2	1,828	1,842
E05004882	Norman	E07000105	Ashford	AshfordED2	1,843	1,859
E05004883	North Willesborough	E07000105	Ashford	AshfordED2	4,877	4,919
E05004890	South Willesborough	E07000105	Ashford	AshfordED2	2,077	2,094
E05004874	Downs North	E07000105	Ashford	AshfordED3	2,011	2,030
E05004888	Saxon Shore	E07000105	Ashford	AshfordED3	1,897	1,917
E05004898	Weald East	E07000105	Ashford	AshfordED3	4,381	4,429
E05004900	Weald South	E07000105	Ashford	AshfordED3	4,260	4,312
E05004901	Wye	E07000105	Ashford	AshfordED3	1,914	1,932
E05004889	Singleton South	E07000105	Ashford	AshfordED4	3,799	3,821
E05004892	Stour	E07000105	Ashford	AshfordED4	3,731	3,768
E05004895	Victoria	E07000105	Ashford	AshfordED4	6,260	6,319
E05004870	Bockhanger	E07000105	Ashford	AshfordED5	2,022	2,038
E05004872	Bybrook	E07000105	Ashford	AshfordED5	1,894	1,907
E05004876	Godinton	E07000105	Ashford	AshfordED5	6,257	6,321
E05004880	Kennington	E07000105	Ashford	AshfordED5	1,804	1,821
E05004881	Little Burton Farm	E07000105	Ashford	AshfordED5	2,249	2,275
E05004871	Boughton Aluph and Eastwell	E07000105	Ashford	AshfordED6	2,272	2,303
E05004873	Charing	E07000105	Ashford	AshfordED6	2,169	2,184
E05004875	Downs West	E07000105	Ashford	AshfordED6	1,886	1,905
E05004877	Great Chart with Singleton North	E07000105	Ashford	AshfordED6	2,480	2,514
E05004897	Weald Central	E07000105	Ashford	AshfordED6	3,815	3,876
E05004899	Weald North	E07000105	Ashford	AshfordED6	1,879	1,902
E05004869	Biddenden	E07000105	Ashford	AshfordED7	2,045	2,073
E05004879	Isle of Oxney	E07000105	Ashford	AshfordED7	2,157	2,176
E05004886	Rolvenden and Tenterden West	E07000105	Ashford	AshfordED7	2,068	2,088
E05004887	St Michaels	E07000105	Ashford	AshfordED7	2,927	2,942
E05004893	Tenterden North	E07000105	Ashford	AshfordED7	1,914	1,925
E05004894	Tenterden South	E07000105	Ashford	AshfordED7	2,476	2,501
					97,191	98,212

SUMMARY

Proposed New Electoral Division	Electorate (Those aged 18+)	Electorate - including attainers (Those aged 17+)
---------------------------------	-----------------------------	---

Total numbers

AshfordED1	12,744	12,933
AshfordED2	13,879	14,001
AshfordED3	14,463	14,620
AshfordED4	13,791	13,908
AshfordED5	14,226	14,362
AshfordED6	14,501	14,684
AshfordED7	13,586	13,704
District	97,191	98,212
County ED Average	13,972	14,093

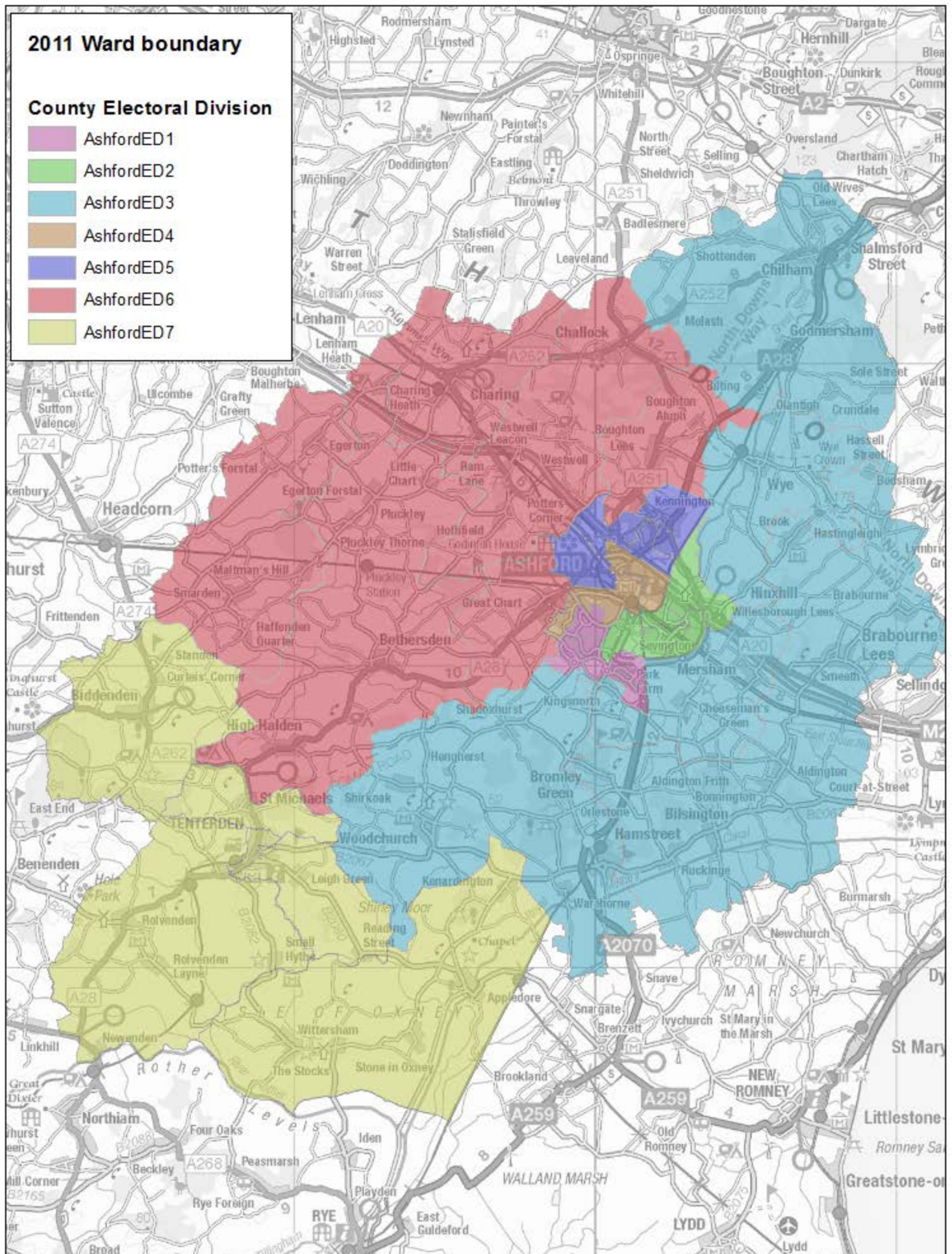
Percentages

AshfordED1	13.1%	13.2%
AshfordED2	14.3%	14.3%
AshfordED3	14.9%	14.9%
AshfordED4	14.2%	14.2%
AshfordED5	14.6%	14.6%
AshfordED6	14.9%	15.0%
AshfordED7	14.0%	14.0%
District	100.0%	100.0%

Variation in each ED size compared to the County average

AshfordED1	-8.8%	-8.2%
AshfordED2	-0.7%	-0.7%
AshfordED3	3.5%	3.7%
AshfordED4	-1.3%	-1.3%
AshfordED5	1.8%	1.9%
AshfordED6	3.8%	4.2%
AshfordED7	-2.8%	-2.8%

Proposed County Electoral Division for Ashford



KCC Strategy-based Population Forecast (March 2014) - CANTERBURY

Population aged 18+ and aged 17+

This file contains unit level data for calculation purposes. It is recommended that all data is rounded to the nearest 10 before publication.

This workbook prepared by presented by Business Intelligence, Research & Evaluation, Kent County Council

Ward code	Ward Name	LA/UA code	LA/UA name	Proposed Electoral Division	Electorate (Those aged 18+)	Electorate - including attainers (Those aged 17+)
E05004906	Chestfield and Swalecliffe	E07000106	Canterbury	CanterburyED1	7,232	7,290
E05004907	Gorrell	E07000106	Canterbury	CanterburyED1	5,383	5,427
E05004910	Harbour	E07000106	Canterbury	CanterburyED1	4,678	4,714
E05004919	Seasalter	E07000106	Canterbury	CanterburyED1	6,844	6,903
E05004922	Tankerton	E07000106	Canterbury	CanterburyED1	3,938	3,978
E05004908	Greenhill and Eddington	E07000106	Canterbury	CanterburyED2	4,713	4,781
E05004912	Heron	E07000106	Canterbury	CanterburyED2	7,356	7,409
E05004917	Reculver	E07000106	Canterbury	CanterburyED2	7,407	7,468
E05004923	West Bay	E07000106	Canterbury	CanterburyED2	5,341	5,392
E05004904	Blean Forest	E07000106	Canterbury	CanterburyED3	5,116	5,132
E05004905	Chartham and Stone Street	E07000106	Canterbury	CanterburyED3	4,525	4,580
E05004909	Harbledown	E07000106	Canterbury	CanterburyED3	2,093	2,103
E05004924	Westgate	E07000106	Canterbury	CanterburyED3	6,756	6,776
E05004925	Wincheap	E07000106	Canterbury	CanterburyED3	6,692	6,738
E05004911	Herne and Broomfield	E07000106	Canterbury	CanterburyED4	7,205	7,287
E05004914	Marshside	E07000106	Canterbury	CanterburyED4	2,493	2,522
E05004920	Sturry North	E07000106	Canterbury	CanterburyED4	2,262	2,278
E05004921	Sturry South	E07000106	Canterbury	CanterburyED4	2,482	2,508
E05004902	Barham Downs	E07000106	Canterbury	CanterburyED5	2,243	2,262
E05004903	Barton	E07000106	Canterbury	CanterburyED5	7,138	7,198
E05004913	Little Stour	E07000106	Canterbury	CanterburyED5	2,165	2,196
E05004915	North Nailbourne	E07000106	Canterbury	CanterburyED5	2,231	2,263
E05004916	Northgate	E07000106	Canterbury	CanterburyED6	5,216	5,240
E05004918	St Stephens	E07000106	Canterbury	CanterburyED6	5,991	6,035
					117,500	118,480

SUMMARY

Proposed Electoral Division	Electorate (Those aged 18+)	Electorate - including attainers (Those aged 17+)
-----------------------------	--------------------------------	---

Total numbers

CanterburyED1	28,075	28,313
CanterburyED2	24,818	25,050
CanterburyED3	25,183	25,329
CanterburyED4	14,442	14,594
CanterburyED5	13,776	13,919
CanterburyED6	11,207	11,274
District	117,500	118,480
County ED Average	13,972	14,093

Percentages

CanterburyED1	23.9%	23.9%
CanterburyED2	21.1%	21.1%
CanterburyED3	21.4%	21.4%
CanterburyED4	12.3%	12.3%
CanterburyED5	11.7%	11.7%
CanterburyED6	9.5%	9.5%
District	100.0%	100.0%

Variation in each ED size compared to the County average

CanterburyED1	0.5%	0.4%
CanterburyED2	-11.2%	-11.1%
CanterburyED3	-9.9%	-10.1%
CanterburyED4	3.4%	3.6%
CanterburyED5	-1.4%	-1.2%
CanterburyED6	-19.8%	-20.0%

Potential two member division
 Potential two member division
 Potential two member division

KCC Strategy-based Population Forecast (March 2014) - DARTFORD

Population aged 18+ and aged 17+

This file contains unit level data for calculation purposes. It is recommended that all data is rounded to the nearest 10 before publication.

This workbook prepared by presented by Business Intelligence, Research & Evaluation, Kent County Council

Colour coded to match accompanying map

Ward code	Ward Name	LA/UA code	LA/UA name	Proposed New Electoral Division	Electorate (Those aged 18+)	Electorate - including attainers (Those aged 17+)
E05004927	Brent	E07000107	Dartford	DartfordED1	5,458	5,512
E05004928	Castle	E07000107	Dartford	DartfordED1	1,934	1,947
E05004937	Stone	E07000107	Dartford	DartfordED1	6,564	6,630
E05004931	Joyce Green	E07000107	Dartford	DartfordED2	5,660	5,717
E05004933	Littlebrook	E07000107	Dartford	DartfordED2	3,453	3,494
E05004935	Newtown	E07000107	Dartford	DartfordED2	5,497	5,552
E05004926	Bean and Darent	E07000107	Dartford	DartfordED3	4,393	4,426
E05004934	Longfield, New Barn and Southfleet	E07000107	Dartford	DartfordED3	5,840	5,907
E05004938	Sutton-at-Hone and Hawley	E07000107	Dartford	DartfordED3	3,391	3,433
E05004930	Heath	E07000107	Dartford	DartfordED4	4,903	4,970
E05004940	Town	E07000107	Dartford	DartfordED4	3,696	3,717
E05004941	West Hill	E07000107	Dartford	DartfordED4	5,400	5,456
E05004929	Greenhithe	E07000107	Dartford	DartfordED5	9,147	9,238
E05004939	Swanscombe	E07000107	Dartford	DartfordED5	6,102	6,181
E05004932	Joydens Wood	E07000107	Dartford	DartfordED6	5,843	5,908
E05004936	Princes	E07000107	Dartford	DartfordED6	4,555	4,623
E05004942	Wilmington	E07000107	Dartford	DartfordED6	3,393	3,430
					85,232	86,141

SUMMARY

Proposed New Electoral Division	Electorate (Those aged 18+)	Electorate - including attainers (Those aged 17+)
---------------------------------	--------------------------------	---

Total numbers

DartfordED1	13,957	14,088
DartfordED2	14,611	14,763
DartfordED3	13,624	13,766
DartfordED4	14,000	14,143
DartfordED5	15,249	15,420
DartfordED6	13,791	13,961
District	85,232	86,141
County ED Average	13,972	14,093

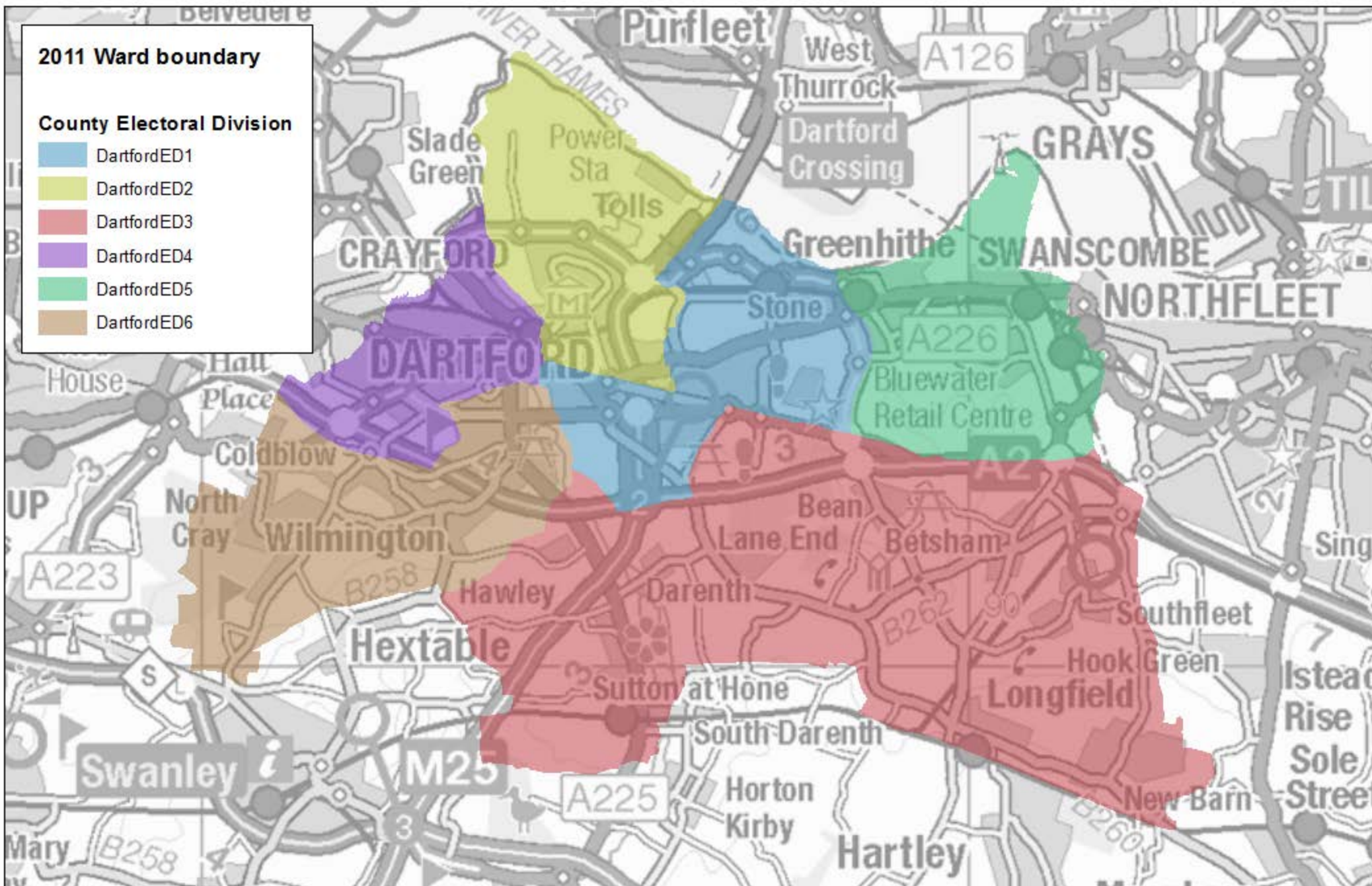
Percentages

DartfordED1	16.4%	16.4%
DartfordED2	17.1%	17.1%
DartfordED3	16.0%	16.0%
DartfordED4	16.4%	16.4%
DartfordED5	17.9%	17.9%
DartfordED6	16.2%	16.2%
District	100.0%	100.0%

Variation in each ED size compared to the County average

DartfordED1	-0.1%	0.0%
DartfordED2	4.6%	4.8%
DartfordED3	-2.5%	-2.3%
DartfordED4	0.2%	0.4%
DartfordED5	9.1%	9.4%
DartfordED6	-1.3%	-0.9%

Proposed County Electoral Division for Dartford



Source: This map produced by Business Intelligence, Kent County Council
© Crown Copyright and database right 2014, Ordnance Survey 100019238

KCCStrategy-basedPopulationForecast(March2014) - DOVER

Populationaged18+andaged17+

This file contains unit level data for calculation purposes. It is recommended that all data is rounded to the nearest 10 before publication.

This workbook prepared by presented by Business Intelligence, Research & Evaluation, Kent County Council

Colour coded to match accompanying map

Wardcode	WardName	LA/UAcode	LA/UName	ProposedNewElectoralDivision	Electorate (Thoseaged18+)	Electorate- includingattainers (Thoseaged17+)
E05004945	Capel-le-Ferne	E07000108	Dover	DoverED1	2,055	2,066
E05004950	Lydden and Temple Ewell	E07000108	Dover	DoverED1	2,107	2,124
E05004956	River	E07000108	Dover	DoverED1	3,941	3,976
E05004963	Whitfield	E07000108	Dover	DoverED1	4,316	4,339
E05004946	Castle	E07000108	Dover	DoverED2	1,752	1,761
E05004951	Maxton, Elms Vale and Priory	E07000108	Dover	DoverED2	5,882	5,917
E05004960	Tower Hamlets	E07000108	Dover	DoverED2	4,256	4,289
E05004961	Town and Pier	E07000108	Dover	DoverED2	1,794	1,801
E05004944	Buckland	E07000108	Dover	DoverED3	5,735	5,778
E05004957	St Margaret's-at-Cliffe	E07000108	Dover	DoverED3	4,303	4,313
E05004958	St Radigunds	E07000108	Dover	DoverED3	4,819	4,862
E05004943	Aylesham	E07000108	Dover	DoverED4	4,943	4,972
E05004947	Eastry	E07000108	Dover	DoverED4	5,400	5,431
E05004948	Eythorne and Shepherdswell	E07000108	Dover	DoverED4	4,023	4,054
E05004949	Little Stour and Ashstone	E07000108	Dover	DoverED4	5,985	6,030
E05004959	Sandwich	E07000108	Dover	DoverED4	4,896	4,947
E05004953	Mill Hill	E07000108	Dover	DoverED5	6,542	6,611
E05004955	Ringwould	E07000108	Dover	DoverED5	1,999	2,020
E05004962	Walmer	E07000108	Dover	DoverED5	6,902	6,950
E05004952	Middle Deal and Sholden	E07000108	Dover	DoverED6	6,783	6,815
E05004954	North Deal	E07000108	Dover	DoverED6	6,213	6,243
					94,647	95,300

SUMMARY

ProposedNewElectoralDivision	Electorate (Those aged 18+)	Electorate - including attainers (Those aged 17+)
------------------------------	--------------------------------	---

Total numbers

Potential 2 member division	DoverED1	12,419	12,505
	DoverED2	13,684	13,767
	DoverED3	14,857	14,953
	DoverED4	25,247	25,434
	DoverED5	15,444	15,582
	DoverED6	12,996	13,058
	District	94,647	95,300
	County ED Average	13,972	14,093

Percentages

Potential 2 member division	DoverED1	13.1%	13.1%
	DoverED2	14.5%	14.4%
	DoverED3	15.7%	15.7%
	DoverED4	26.7%	26.7%
	DoverED5	16.3%	16.4%
	DoverED6	13.7%	13.7%
	District	100.0%	100.0%

Variation in each ED size compared to the County average

Potential 2 member division	DoverED1	-11.1%	-11.3%
	DoverED2	-2.1%	-2.3%
	DoverED3	6.3%	6.1%
	DoverED4	-9.7%	-9.8%
	DoverED5	10.5%	10.6%
	DoverED6	-7.0%	-7.3%

KCC Strategy-based Population Forecast (March 2014) - GRAVESHAM

Population aged 18+ and aged 17+

This file contains unit level data for calculation purposes. It is recommended that all data is rounded to the nearest 10 before publication.

This workbook prepared by presented by Business Intelligence, Research & Evaluation, Kent County Council

Ward code	Ward Name	LA/UA code	LA/UA name	Proposed New Electoral Division	Electorate (Those aged 18+)	Electorate - including attainers (Those aged 17+)
E05004967	Higham	E07000109	Gravesham	GraveshamED1	3,312	3,338
E05004968	Istead Rise	E07000109	Gravesham	GraveshamED1	2,919	2,946
E05004969	Meopham North	E07000109	Gravesham	GraveshamED1	3,630	3,671
E05004970	Meopham South and Vigo	E07000109	Gravesham	GraveshamED1	3,641	3,670
E05004973	Painters Ash	E07000109	Gravesham	GraveshamED1	4,661	4,705
E05004977	Shorne, Cobham and Luddesdown	E07000109	Gravesham	GraveshamED1	3,440	3,464
E05004981	Woodlands	E07000109	Gravesham	GraveshamED1	5,074	5,118
E05004964	Central	E07000109	Gravesham	GraveshamED2	4,736	4,774
E05004965	Chalk	E07000109	Gravesham	GraveshamED2	1,820	1,833
E05004975	Riverside	E07000109	Gravesham	GraveshamED2	5,706	5,742
E05004976	Riverview	E07000109	Gravesham	GraveshamED2	3,463	3,494
E05004978	Singlewell	E07000109	Gravesham	GraveshamED2	5,421	5,479
E05004980	Whitehill	E07000109	Gravesham	GraveshamED2	3,195	3,231
E05004966	Coldharbour	E07000109	Gravesham	GraveshamED3	3,286	3,311
E05004971	Northfleet North	E07000109	Gravesham	GraveshamED3	5,491	5,524
E05004972	Northfleet South	E07000109	Gravesham	GraveshamED3	5,854	5,903
E05004974	Pelham	E07000109	Gravesham	GraveshamED3	5,515	5,539
E05004979	Westcourt	E07000109	Gravesham	GraveshamED3	4,927	4,968
					76,089	76,711

SUMMARY

Proposed New Electoral Division	Electorate (Those aged 18+)	Electorate - including attainers (Those aged 17+)
---------------------------------	--------------------------------	---

Total numbers

GraveshamED1	26,676	26,913
GraveshamED2	24,340	24,553
GraveshamED3	25,073	25,245
District	76,089	76,711
County ED Average	13,972	14,093

Percentages

GraveshamED1	35.1%	35.1%
GraveshamED2	32.0%	32.0%
GraveshamED3	33.0%	32.9%
District	100.0%	100.0%

Variation in each ED size compared to the County average

GraveshamED1	-4.5%	-4.5%
GraveshamED2	-12.9%	-12.9%
GraveshamED3	-10.3%	-10.4%

Note: Potential for three divisions to become 2 member divisions.
Currently 3 divisions 2 of which are 2 member divisions

KCC Strategy-based Population Forecast (March 2014) - MAIDSTONE

Population aged 18+ and aged 17+

This file contains unit level data for calculation purposes. It is recommended that all data is rounded to the nearest 10 before publication.

This workbook prepared by presented by Business Intelligence, Research & Evaluation, Kent County Council

Click on each of the cells in this column to select the New Electoral Division

Ward code	Ward Name	LA/UA code	LA/UA name	Proposed New Electoral Division	Electorate (Those aged 18+)	Electorate - including attainers (Those aged 17+)
E05004984	Bearsted	E07000110	Maidstone	MaidstoneED1	7,204	7,273
E05004986	Boxley	E07000110	Maidstone	MaidstoneED1	7,327	7,414
E05004989	Detling and Thurnham	E07000110	Maidstone	MaidstoneED2	2,589	2,623
E05004993	Harrietsham and Lenham	E07000110	Maidstone	MaidstoneED2	5,107	5,140
E05004994	Headcorn	E07000110	Maidstone	MaidstoneED2	4,377	4,407
E05005001	North Downs	E07000110	Maidstone	MaidstoneED2	2,118	2,128
E05004982	Allington	E07000110	Maidstone	MaidstoneED3	6,919	6,976
E05004987	Bridge	E07000110	Maidstone	MaidstoneED3	4,586	4,618
E05004992	Fant	E07000110	Maidstone	MaidstoneED3	7,062	7,124
E05004995	Heath	E07000110	Maidstone	MaidstoneED3	4,504	4,561
E05004996	High Street	E07000110	Maidstone	MaidstoneED3	6,980	7,061
E05004991	East	E07000110	Maidstone	MaidstoneED4	6,905	6,966
E05005000	North	E07000110	Maidstone	MaidstoneED4	6,200	6,260
E05005003	Shepway North	E07000110	Maidstone	MaidstoneED5	6,962	7,087
E05008555	South	E07000110	Maidstone	MaidstoneED5	8,009	8,072
E05004990	Downswood and Otham	E07000110	Maidstone	MaidstoneED6	2,615	2,641
E05005002	Park Wood	E07000110	Maidstone	MaidstoneED6	5,974	6,051
E05005004	Shepway South	E07000110	Maidstone	MaidstoneED6	4,834	4,884
E05004985	Boughton Monchelsea and Chart Sutton	E07000110	Maidstone	MaidstoneED7	2,155	2,178
E05004997	Leeds	E07000110	Maidstone	MaidstoneED7	2,137	2,152
E05005006	Staplehurst	E07000110	Maidstone	MaidstoneED7	5,207	5,265
E05005007	Sutton Valence and Langley	E07000110	Maidstone	MaidstoneED7	2,261	2,280
E05008554	Loose	E07000110	Maidstone	MaidstoneED7	2,179	2,200
E05004983	Barming	E07000110	Maidstone	MaidstoneED8	2,510	2,530
E05004999	Marden and Yalding	E07000110	Maidstone	MaidstoneED8	6,519	6,584
E05008553	Coxheath and Hunton	E07000110	Maidstone	MaidstoneED8	6,193	6,266
					129,433	130,742

Count:	9
Lookup:	
MaidstoneED1	
MaidstoneED2	
MaidstoneED3	
MaidstoneED4	
MaidstoneED5	
MaidstoneED6	
MaidstoneED7	
MaidstoneED8	
MaidstoneED9	

SUMMARY

Proposed New Electoral Division	Electorate (Those aged 18+)	Electorate - including attainers (Those aged 17+)
---------------------------------	-----------------------------	---

These tables will automatically update to reflect the population within each of the New Electoral Divisions.

Total numbers

MaidstoneED1	14,531	14,687
MaidstoneED2	14,192	14,298
MaidstoneED3	30,051	30,340
MaidstoneED4	13,105	13,226
MaidstoneED5	14,971	15,159
MaidstoneED6	13,423	13,576
MaidstoneED7	13,939	14,075
MaidstoneED8	15,223	15,380
District	129,433	130,742
County ED Average	13,972	14,093

Percentages

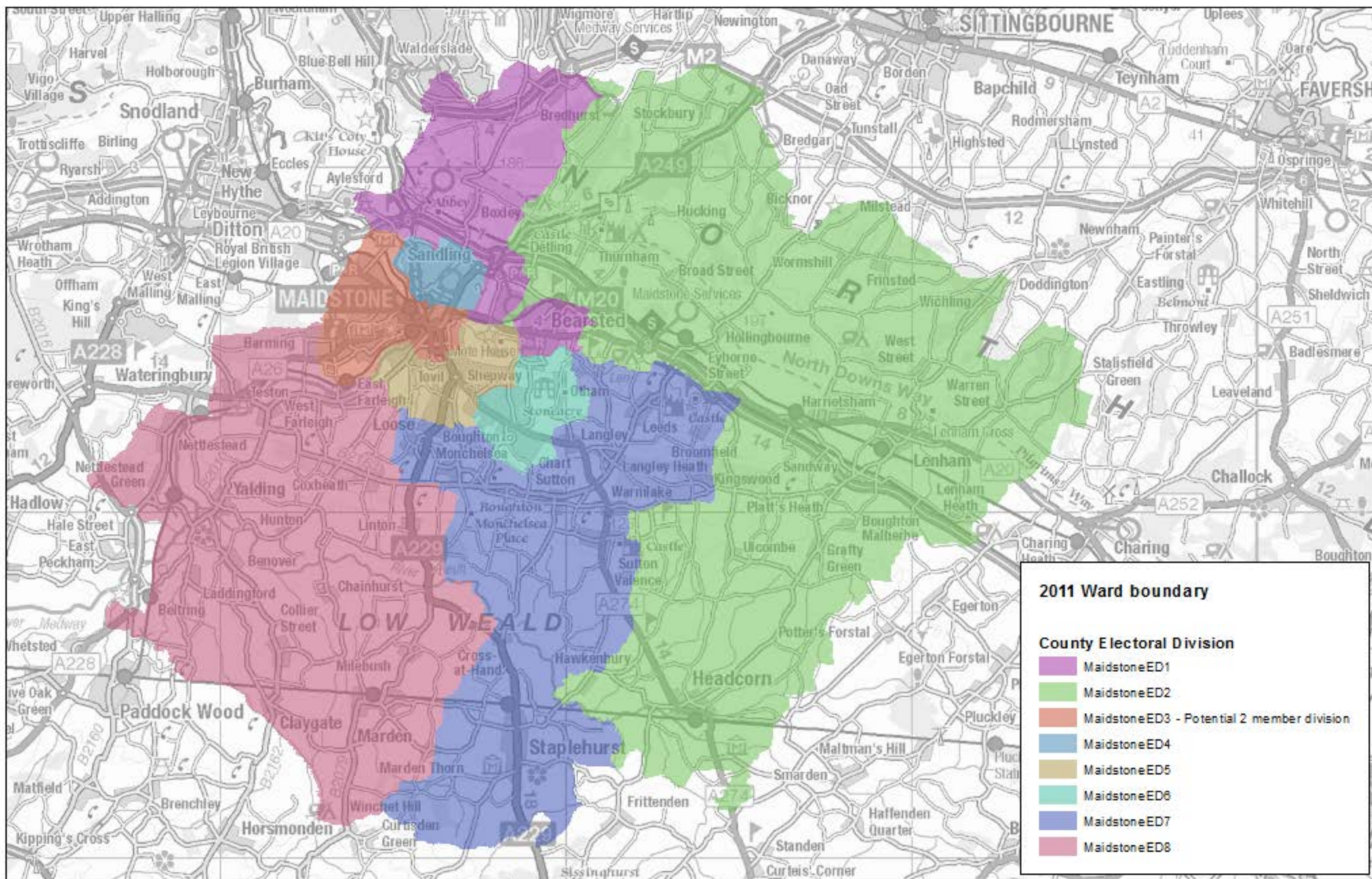
MaidstoneED1	11.2%	11.2%
MaidstoneED2	11.0%	10.9%
MaidstoneED3	23.2%	23.2%
MaidstoneED4	10.1%	10.1%
MaidstoneED5	11.6%	11.6%
MaidstoneED6	10.4%	10.4%
MaidstoneED7	10.8%	10.8%
MaidstoneED8	11.8%	11.8%
District	100.0%	100.0%

Variation in each ED size compared to the County average

MaidstoneED1	4.0%	4.2%
MaidstoneED2	1.6%	1.5%
MaidstoneED3	7.5%	7.6%
MaidstoneED4	-6.2%	-6.2%
MaidstoneED5	7.1%	7.6%
MaidstoneED6	-3.9%	-3.7%
MaidstoneED7	-0.2%	-0.1%
MaidstoneED8	9.0%	9.1%

Potential 2 member division

Proposed County Electoral Division for Maidstone



Source: This map produced by Business Intelligence, Kent County Council
 © Crown Copyright and database right 2014, Ordnance Survey 100019238



KCC Strategy-based Population Forecast (March 2014) - SEVENOAKS

Population aged 18+ and aged 17+

This file contains unit level data for calculation purposes. It is recommended that all data is rounded to the nearest 10 before publication.

This workbook prepared by presented by Business Intelligence, Research & Evaluation, Kent County Council

Ward code	Ward Name	LA/UA code	LA/UA name	Proposed New Electoral Division	Electorate (Those aged 18+)	Electorate - including attainers (Those aged 17+)
E05005008	Ash and New Ash Green	E07000111	Sevenoaks	SevenoaksED1	4,606	4,669
E05005017	Fawkham and West Kingsdown	E07000111	Sevenoaks	SevenoaksED1	4,774	4,808
E05005019	Hartley and Hodsoll Street	E07000111	Sevenoaks	SevenoaksED1	4,808	4,863
E05005020	Hextable	E07000111	Sevenoaks	SevenoaksED2	3,288	3,332
E05005030	Swanley Christchurch and Swanley Village	E07000111	Sevenoaks	SevenoaksED2	4,817	4,893
E05005031	Swanley St Mary's	E07000111	Sevenoaks	SevenoaksED2	3,127	3,155
E05005032	Swanley White Oak	E07000111	Sevenoaks	SevenoaksED2	4,626	4,676
E05005011	Crockenhill and Well Hill	E07000111	Sevenoaks	SevenoaksED3	1,493	1,505
E05005015	Eynsford	E07000111	Sevenoaks	SevenoaksED3	1,461	1,471
E05005016	Farningham, Horton Kirby and South Darenth	E07000111	Sevenoaks	SevenoaksED3	3,710	3,744
E05005021	Kemsing	E07000111	Sevenoaks	SevenoaksED3	3,227	3,262
E05005023	Otford and Shoreham	E07000111	Sevenoaks	SevenoaksED3	3,533	3,570
E05005025	Seal and Weald	E07000111	Sevenoaks	SevenoaksED4	3,140	3,180
E05005026	Sevenoaks Eastern	E07000111	Sevenoaks	SevenoaksED4	2,942	2,971
E05005028	Sevenoaks Northern	E07000111	Sevenoaks	SevenoaksED4	3,184	3,202
E05005029	Sevenoaks Town and St John's	E07000111	Sevenoaks	SevenoaksED4	4,940	4,989
E05005009	Brasted, Chevening and Sundridge	E07000111	Sevenoaks	SevenoaksED5	4,935	4,987
E05005012	Dunton Green and Riverhead	E07000111	Sevenoaks	SevenoaksED5	4,211	4,256
E05005018	Halstead, Knockholt and Badgers Mount	E07000111	Sevenoaks	SevenoaksED5	2,742	2,767
E05005027	Sevenoaks Kippington	E07000111	Sevenoaks	SevenoaksED5	3,402	3,459
E05005010	Cowden and Hever	E07000111	Sevenoaks	SevenoaksED6	1,558	1,580
E05005013	Edenbridge North and East	E07000111	Sevenoaks	SevenoaksED6	3,619	3,667
E05005014	Edenbridge South and West	E07000111	Sevenoaks	SevenoaksED6	3,149	3,191
E05005022	Leigh and Chiddingstone Causeway	E07000111	Sevenoaks	SevenoaksED6	1,856	1,880
E05005024	Penshurst, Fordcombe and Chiddingstone	E07000111	Sevenoaks	SevenoaksED6	1,939	1,960
E05005033	Westerham and Crockham Hill	E07000111	Sevenoaks	SevenoaksED6	3,281	3,303
					88,370	89,339

SUMMARY

Proposed New Electoral Division	Electorate (Those aged 18+)	Electorate - including attainers (Those aged 17+)
---------------------------------	--------------------------------	---

Total numbers

SevenoaksED1	14,188	14,341
SevenoaksED2	15,858	16,056
SevenoaksED3	13,425	13,553
SevenoaksED4	14,206	14,341
SevenoaksED5	15,291	15,469
SevenoaksED6	15,402	15,579
District	88,370	89,339
County ED Average	13,972	14,093

Percentages

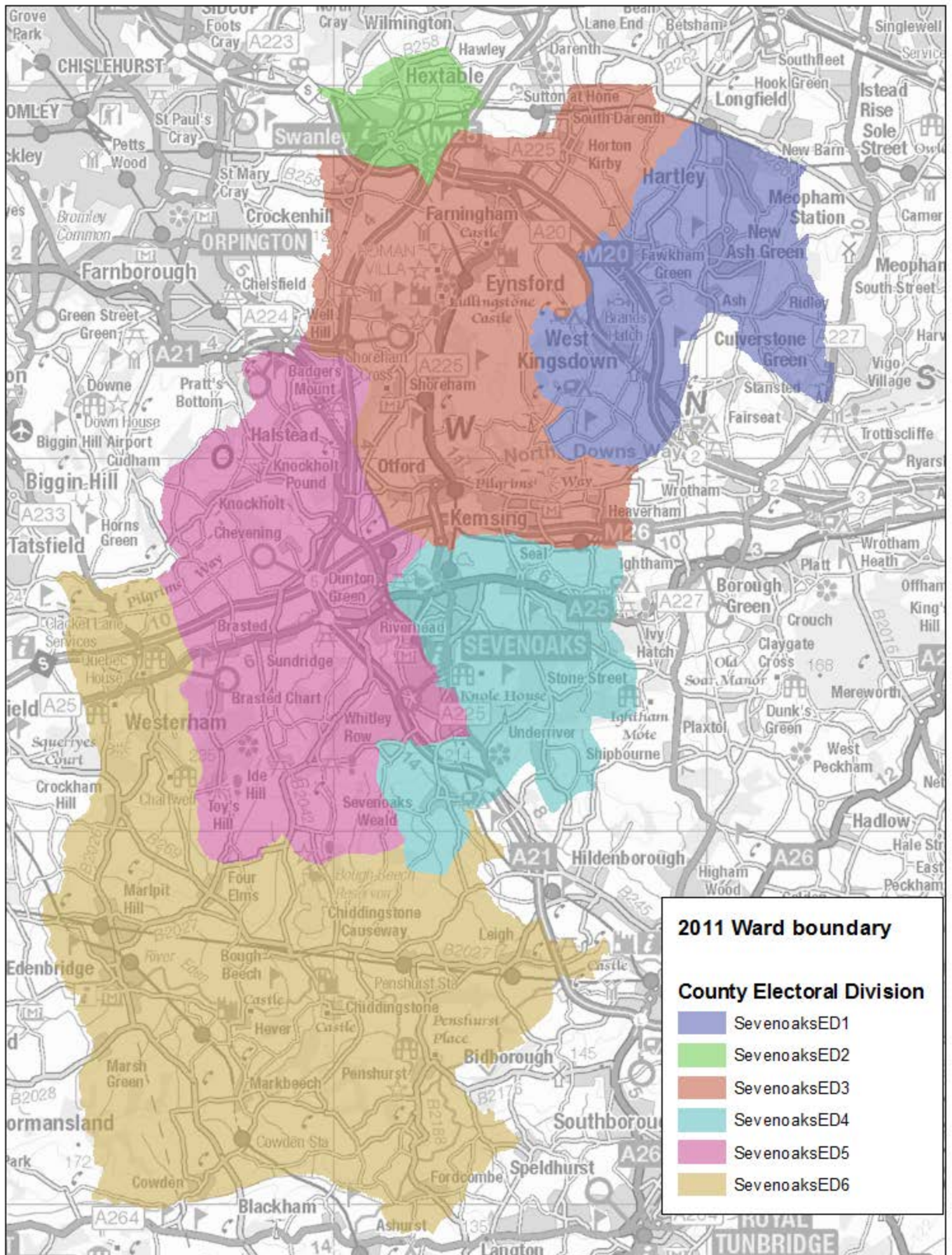
SevenoaksED1	16.1%	16.1%
SevenoaksED2	17.9%	18.0%
SevenoaksED3	15.2%	15.2%
SevenoaksED4	16.1%	16.1%
SevenoaksED5	17.3%	17.3%
SevenoaksED6	17.4%	17.4%
District	100.0%	100.0%

Variation in each ED size compared to the County average

SevenoaksED1	1.5%	1.8%
SevenoaksED2	13.5%	13.9%
SevenoaksED3	-3.9%	-3.8%
SevenoaksED4	1.7%	1.8%
SevenoaksED5	9.4%	9.8%
SevenoaksED6	10.2%	10.5%

Sevenoaks district is one member short

Proposed County Electoral Division for Sevenoaks



2011 Ward boundary

County Electoral Division

- SevenoaksED1
- SevenoaksED2
- SevenoaksED3
- SevenoaksED4
- SevenoaksED5
- SevenoaksED6



KCC Strategy-based Population Forecast (March 2014) - SHEPWAY

Population aged 18+ and aged 17+

This file contains unit level data for calculation purposes. It is recommended that all data is rounded to the nearest 10 before publication.

This workbook prepared by presented by Business Intelligence, Research & Evaluation, Kent County Council

Ward code	Ward Name	LA/UA code	LA/UA name	Proposed New Electoral Division	Electorate (Those aged 18+)	Electorate - including attainers (Those aged 17+)
E05005034	Dymchurch and St Mary's Bay	E07000112	Shepway	ShepwayED1	5,436	5,458
E05005048	Lydd	E07000112	Shepway	ShepwayED1	5,296	5,307
E05005050	New Romney Coast	E07000112	Shepway	ShepwayED1	3,052	3,062
E05005051	New Romney Town	E07000112	Shepway	ShepwayED1	2,963	2,984
E05005054	Romney Marsh	E07000112	Shepway	ShepwayED1	2,023	2,036
E05005035	Elham and Stelling Minnis	E07000112	Shepway	ShepwayED2	1,805	1,819
E05005049	Lympne and Stanford	E07000112	Shepway	ShepwayED2	1,585	1,596
E05005052	North Downs East	E07000112	Shepway	ShepwayED2	7,046	7,095
E05005053	North Downs West	E07000112	Shepway	ShepwayED2	3,615	3,625
E05005045	Hythe Central	E07000112	Shepway	ShepwayED3	5,664	5,674
E05005046	Hythe East	E07000112	Shepway	ShepwayED3	3,587	3,604
E05005047	Hythe West	E07000112	Shepway	ShepwayED3	4,491	4,511
E05005036	Folkestone Cheriton	E07000112	Shepway	ShepwayED4	5,185	5,228
E05005042	Folkestone Morehall	E07000112	Shepway	ShepwayED4	3,383	3,394
E05005044	Folkestone Sandgate	E07000112	Shepway	ShepwayED4	3,550	3,557
E05005055	Tolsford	E07000112	Shepway	ShepwayED4	1,682	1,687
E05005039	Folkestone Harbour	E07000112	Shepway	ShepwayED5	4,041	4,041
E05005040	Folkestone Harvey Central	E07000112	Shepway	ShepwayED5	5,360	5,358
E05005041	Folkestone Harvey West	E07000112	Shepway	ShepwayED5	3,420	3,435
E05005037	Folkestone East	E07000112	Shepway	ShepwayED6	3,616	3,625
E05005038	Folkestone Foord	E07000112	Shepway	ShepwayED6	4,103	4,112
E05005043	Folkestone Park	E07000112	Shepway	ShepwayED6	5,175	5,204
					86,080	86,412

SUMMARY

Proposed New Electoral Division	Electorate (Those aged 18+)	Electorate - including attainers (Those aged 17+)
---------------------------------	--------------------------------	---

Total numbers

ShepwayED1	18,770	18,847
ShepwayED2	14,052	14,135
ShepwayED3	13,742	13,789
ShepwayED4	13,800	13,866
ShepwayED5	12,821	12,834
ShepwayED6	12,895	12,940
District	86,080	86,412
County ED Average	13,972	14,093

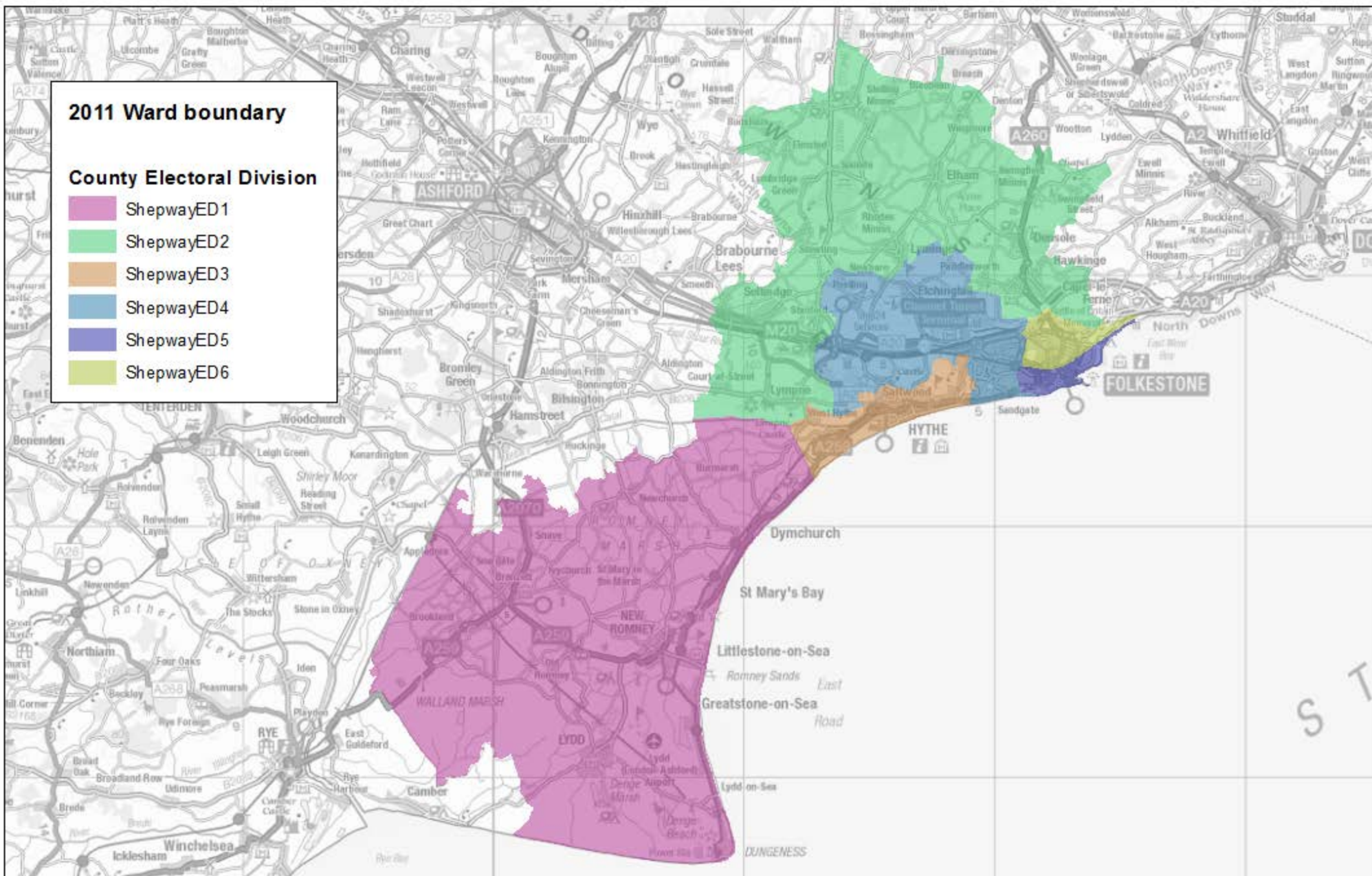
Percentages

ShepwayED1	21.8%	21.8%
ShepwayED2	16.3%	16.4%
ShepwayED3	16.0%	16.0%
ShepwayED4	16.0%	16.0%
ShepwayED5	14.9%	14.9%
ShepwayED6	15.0%	15.0%
District	100.0%	100.0%

Variation in each ED size compared to the County average

ShepwayED1	34.3%	33.7%
ShepwayED2	0.6%	0.3%
ShepwayED3	-1.6%	-2.2%
ShepwayED4	-1.2%	-1.6%
ShepwayED5	-8.2%	-8.9%
ShepwayED6	-7.7%	-8.2%

Proposed County Electoral Division for Shepway



Source: This map produced by Business Intelligence, Kent County Council
© Crown Copyright and database right 2014, Ordnance Survey 100019238



14

www.kent.gov.uk

Kent County Council



KCC Strategy-based Population Forecast (March 2014) - SWALE

Population aged 18+ and aged 17+

This file contains unit level data for calculation purposes. It is recommended that all data is rounded to the nearest 10 before publication.

This workbook prepared by presented by Business Intelligence, Research & Evaluation, Kent County Council

Ward code	Ward Name	LA/UA code	LA/UA name	Proposed New Electoral Division	Electorate (Those aged 18+)	Electorate - including attainers (Those aged 17+)
E05005066	Leysdown and Warden	E07000113	Swale	SwaleED1	2,555	2,571
E05005070	Queenborough and Halfway	E07000113	Swale	SwaleED1	6,260	6,295
E05005076	Sheppey Central	E07000113	Swale	SwaleED1	3,833	3,836
E05005068	Minster Cliffs	E07000113	Swale	SwaleED2	6,018	6,053
E05005074	Sheerness East	E07000113	Swale	SwaleED2	2,862	2,870
E05005075	Sheerness West	E07000113	Swale	SwaleED2	4,090	4,127
E05005056	Abbey	E07000113	Swale	SwaleED3	4,765	4,789
E05005058	Boughton and Courtenay	E07000113	Swale	SwaleED3	4,115	4,146
E05005060	Davington Priory	E07000113	Swale	SwaleED3	2,032	2,042
E05005061	East Downs	E07000113	Swale	SwaleED3	2,127	2,140
E05005072	St Ann's	E07000113	Swale	SwaleED3	4,432	4,472
E05005077	Teynham and Lynsted	E07000113	Swale	SwaleED3	4,393	4,409
E05005078	Watling	E07000113	Swale	SwaleED3	4,051	4,072
E05005079	West Downs	E07000113	Swale	SwaleED3	2,266	2,276
E05005059	Chalkwell	E07000113	Swale	SwaleED4	4,358	4,388
E05005062	Grove	E07000113	Swale	SwaleED4	5,204	5,232
E05005063	Hartlip, Newington and Upchurch	E07000113	Swale	SwaleED4	4,424	4,457
E05005064	Iwade and Lower Halstow	E07000113	Swale	SwaleED4	3,673	3,701
E05005065	Kemsley	E07000113	Swale	SwaleED4	4,639	4,660
E05005067	Milton Regis	E07000113	Swale	SwaleED4	3,516	3,545
E05005069	Murston	E07000113	Swale	SwaleED4	4,287	4,315
E05005057	Borden	E07000113	Swale	SwaleED5	1,932	1,937
E05005071	Roman	E07000113	Swale	SwaleED5	3,510	3,537
E05005073	St Michaels	E07000113	Swale	SwaleED5	8,570	8,689
E05005080	Woodstock	E07000113	Swale	SwaleED5	4,074	4,098
					101,987	102,658

SUMMARY

Proposed New Electoral Division	Electorate (Those aged 18+)	Electorate - including attainers (Those aged 17+)
---------------------------------	--------------------------------	---

Total numbers

SwaleED1	12,648	12,702
SwaleED2	12,970	13,050
SwaleED3	28,181	28,346
SwaleED4	30,102	30,298
SwaleED5	18,086	18,261
District	101,987	102,658
County ED Average	13,972	14,093

Percentages

SwaleED1	12.4%	12.4%
SwaleED2	12.7%	12.7%
SwaleED3	27.6%	27.6%
SwaleED4	29.5%	29.5%
SwaleED5	17.7%	17.8%
District	100.0%	100.0%

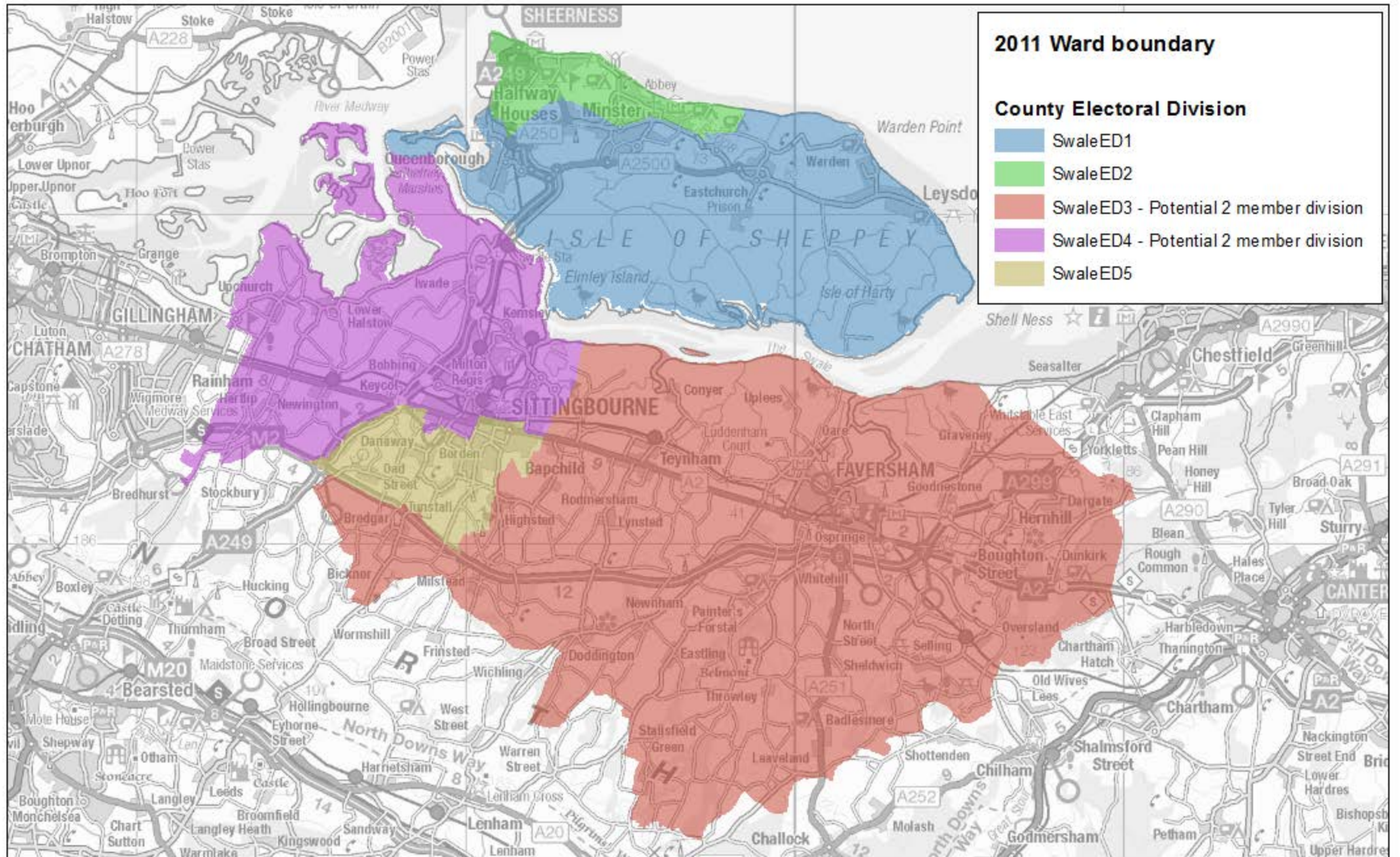
Variation in each ED size compared to the County average

SwaleED1	-9.5%	-9.9%
SwaleED2	-7.2%	-7.4%
SwaleED3	0.8%	0.6%
SwaleED4	7.7%	7.5%
SwaleED5	29.4%	29.6%

Potential two member division

Potential two member division

Proposed County Electoral Division for Swale



Source: This map produced by Business Intelligence, Kent County Council
© Crown Copyright and database right 2014, Ordnance Survey 100019238



KCC Strategy-based Population Forecast (March 2014) - THANET

Population aged 18+ and aged 17+

This file contains unit level data for calculation purposes. It is recommended that all data is rounded to the nearest 10 before publication.

This workbook prepared by presented by Business Intelligence, Research & Evaluation, Kent County Council

Ward code	Ward Name	LA/UA code	LA/UA name	Proposed New Electoral Division	Electorate (Those aged 18+)	Electorate - including attainers (Those aged 17+)
E05005086	Cliffsend and Pegwell	E07000114	Thanet	ThanetED1	3,956	3,991
E05005094	Nethercourt	E07000114	Thanet	ThanetED1	3,518	3,546
E05005100	Thanet Villages	E07000114	Thanet	ThanetED1	6,106	6,150
E05005085	Central Harbour	E07000114	Thanet	ThanetED2	5,960	5,996
E05005090	Eastcliff	E07000114	Thanet	ThanetED2	5,454	5,507
E05005095	Newington	E07000114	Thanet	ThanetED2	3,356	3,396
E05005096	Northwood	E07000114	Thanet	ThanetED2	5,111	5,148
E05005099	Sir Moses Montefiore	E07000114	Thanet	ThanetED2	4,043	4,072
E05005101	Viking	E07000114	Thanet	ThanetED2	5,787	5,826
E05005081	Beacon Road	E07000114	Thanet	ThanetED3	3,348	3,384
E05005084	Bradstowe	E07000114	Thanet	ThanetED3	3,282	3,301
E05005087	Cliftonville East	E07000114	Thanet	ThanetED3	5,230	5,249
E05005088	Cliftonville West	E07000114	Thanet	ThanetED3	4,968	4,996
E05005089	Dane Valley	E07000114	Thanet	ThanetED3	5,342	5,387
E05005092	Kingsgate	E07000114	Thanet	ThanetED3	1,798	1,814
E05005097	St Peters	E07000114	Thanet	ThanetED3	4,070	4,090
E05005091	Garlinge	E07000114	Thanet	ThanetED4	3,667	3,713
E05005093	Margate Central	E07000114	Thanet	ThanetED4	3,528	3,555
E05005098	Salmestone	E07000114	Thanet	ThanetED4	4,692	4,750
E05005102	Westbrook	E07000114	Thanet	ThanetED4	3,601	3,628
E05005082	Birchington North	E07000114	Thanet	ThanetED5	3,467	3,483
E05005083	Birchington South	E07000114	Thanet	ThanetED5	5,413	5,444
E05005103	Westgate-on-Sea	E07000114	Thanet	ThanetED5	5,573	5,606
					101,271	102,030

SUMMARY

Proposed New Electoral Division	Electorate (Those aged 18+)	Electorate - including attainers (Those aged 17+)
---------------------------------	--------------------------------	---

Total numbers

ThanetED1	13,580	13,687
ThanetED2	29,711	29,946
ThanetED3	28,037	28,220
ThanetED4	15,489	15,646
ThanetED5	14,454	14,532
District	101,271	102,030
County ED Average	13,972	14,093

Percentages

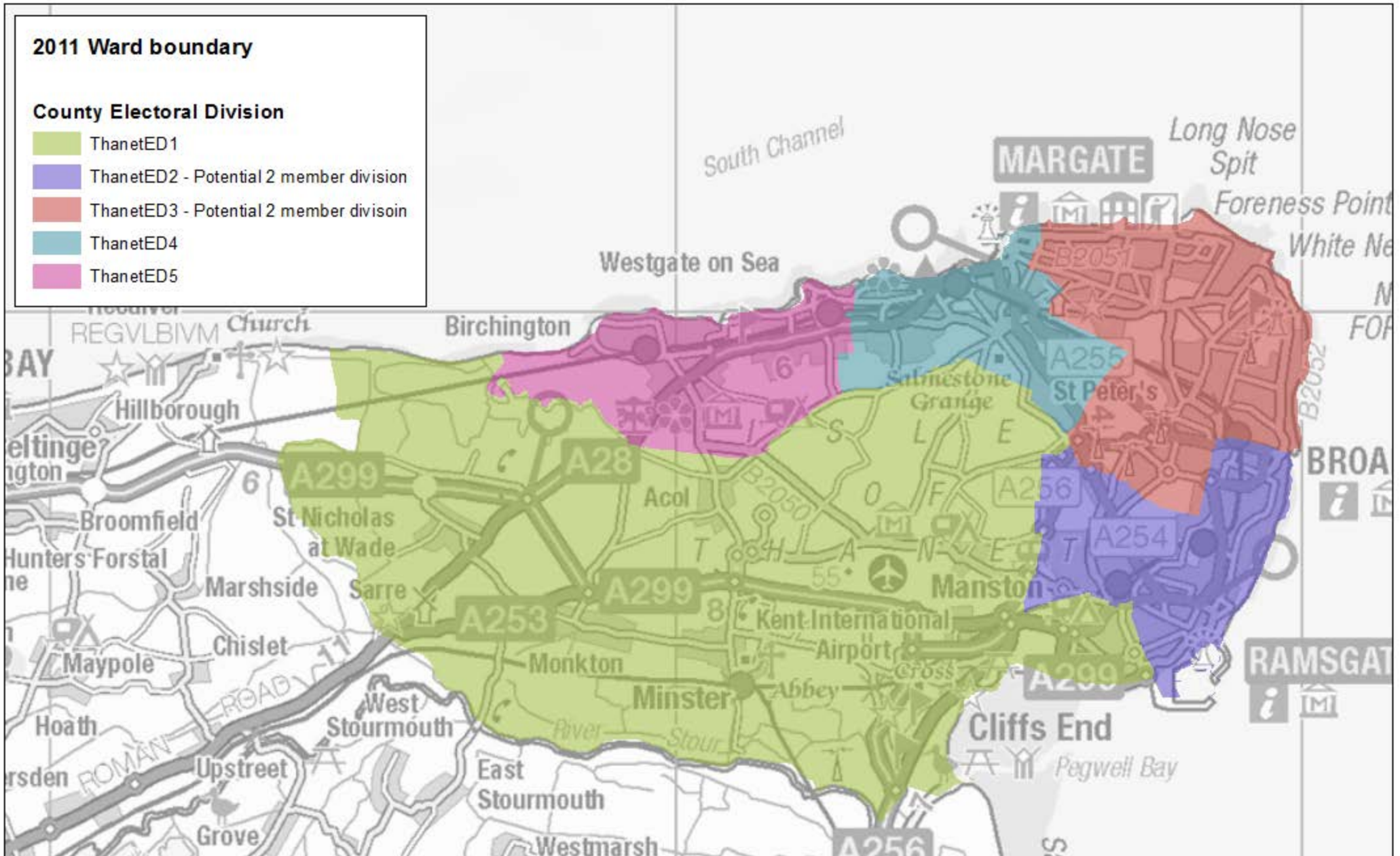
ThanetED1	13.4%	13.4%
ThanetED2	29.3%	29.3%
ThanetED3	27.7%	27.7%
ThanetED4	15.3%	15.3%
ThanetED5	14.3%	14.2%
District	100.0%	100.0%

Variation in each ED size compared to the County average

ThanetED1	-2.8%	-2.9%
ThanetED2	6.3%	6.2%
ThanetED3	0.3%	0.1%
ThanetED4	10.9%	11.0%
ThanetED5	3.4%	3.1%

Potential two member division
Potential two member division

Proposed County Electoral Division for Thanet



Source: This map produced by Business Intelligence, Kent County Council
© Crown Copyright and database right 2014, Ordnance Survey 100019238



KCC Strategy-based Population Forecast (March 2014) - TONBRIDGE & MALLING

Population aged 18+ and aged 17+

This file contains unit level data for calculation purposes. It is recommended that all data is rounded to the nearest 10 before publication.

This workbook prepared by presented by Business Intelligence, Research & Evaluation, Kent County Council

Ward code	Ward Name	LA/UA code	LA/UA name	Proposed New Electoral Division	Electorate (Those aged 18+)	Electorate - including attainers (Those aged 17+)
E05005108	Cage Green	E07000115	Tonbridge and Malling	Tonbridge&MallingED1	3,404	3,433
E05005109	Castle	E07000115	Tonbridge and Malling	Tonbridge&MallingED1	3,777	3,815
E05005115	Higham	E07000115	Tonbridge and Malling	Tonbridge&MallingED1	4,737	4,772
E05005118	Judd	E07000115	Tonbridge and Malling	Tonbridge&MallingED1	3,485	3,515
E05005122	Medway	E07000115	Tonbridge and Malling	Tonbridge&MallingED1	4,885	4,936
E05005125	Trench	E07000115	Tonbridge and Malling	Tonbridge&MallingED1	3,047	3,081
E05005126	Vauxhall	E07000115	Tonbridge and Malling	Tonbridge&MallingED1	3,604	3,642
E05005107	Burham, Eccles and Wouldham	E07000115	Tonbridge and Malling	Tonbridge&MallingED2	4,598	4,657
E05005123	Snodland East	E07000115	Tonbridge and Malling	Tonbridge&MallingED2	4,048	4,073
E05005124	Snodland West	E07000115	Tonbridge and Malling	Tonbridge&MallingED2	4,959	4,996
E05005104	Aylesford	E07000115	Tonbridge and Malling	Tonbridge&MallingED3	4,626	4,658
E05005105	Blue Bell Hill and Walderslade	E07000115	Tonbridge and Malling	Tonbridge&MallingED3	3,282	3,316
E05005112	East Malling	E07000115	Tonbridge and Malling	Tonbridge&MallingED3	3,783	3,811
E05005121	Larkfield South	E07000115	Tonbridge and Malling	Tonbridge&MallingED3	3,342	3,371
E05005128	West Malling and Leybourne	E07000115	Tonbridge and Malling	Tonbridge&MallingED3	5,658	5,709
E05008540	Ditton	E07000115	Tonbridge and Malling	Tonbridge&MallingED3	3,833	3,857
E05008541	Larkfield North	E07000115	Tonbridge and Malling	Tonbridge&MallingED3	4,122	4,150
E05005106	Borough Green and Long Mill	E07000115	Tonbridge and Malling	Tonbridge&MallingED4	5,570	5,626
E05005111	Downs	E07000115	Tonbridge and Malling	Tonbridge&MallingED4	3,175	3,199
E05005113	East Peckham and Golden Green	E07000115	Tonbridge and Malling	Tonbridge&MallingED4	3,242	3,267
E05005114	Hadlow, Mereworth and West Peckham	E07000115	Tonbridge and Malling	Tonbridge&MallingED4	3,447	3,517
E05005116	Hildenborough	E07000115	Tonbridge and Malling	Tonbridge&MallingED4	4,048	4,091
E05005117	Ightham	E07000115	Tonbridge and Malling	Tonbridge&MallingED4	1,567	1,579
E05005119	Kings Hill	E07000115	Tonbridge and Malling	Tonbridge&MallingED4	5,439	5,497
E05005127	Wateringbury	E07000115	Tonbridge and Malling	Tonbridge&MallingED4	1,655	1,673
E05005129	Wrotham	E07000115	Tonbridge and Malling	Tonbridge&MallingED4	1,490	1,504
					98,822	99,746

SUMMARY

Proposed New Electoral Division	Electorate (Those aged 18+)	Electorate - including attainers (Those aged 17+)
---------------------------------	--------------------------------	---

Total numbers

Tonbridge&MallingED1	26,939	27,195
Tonbridge&MallingED2	13,605	13,726
Tonbridge&MallingED3	28,646	28,873
Tonbridge&MallingED4	29,632	29,952
District	98,822	99,746
County ED Average	13,972	14,093

Percentages

Tonbridge&MallingED1	27.3%	27.3%
Tonbridge&MallingED2	13.8%	13.8%
Tonbridge&MallingED3	29.0%	28.9%
Tonbridge&MallingED4	30.0%	30.0%
District	100.0%	100.0%

Variation in each ED size compared to the County average

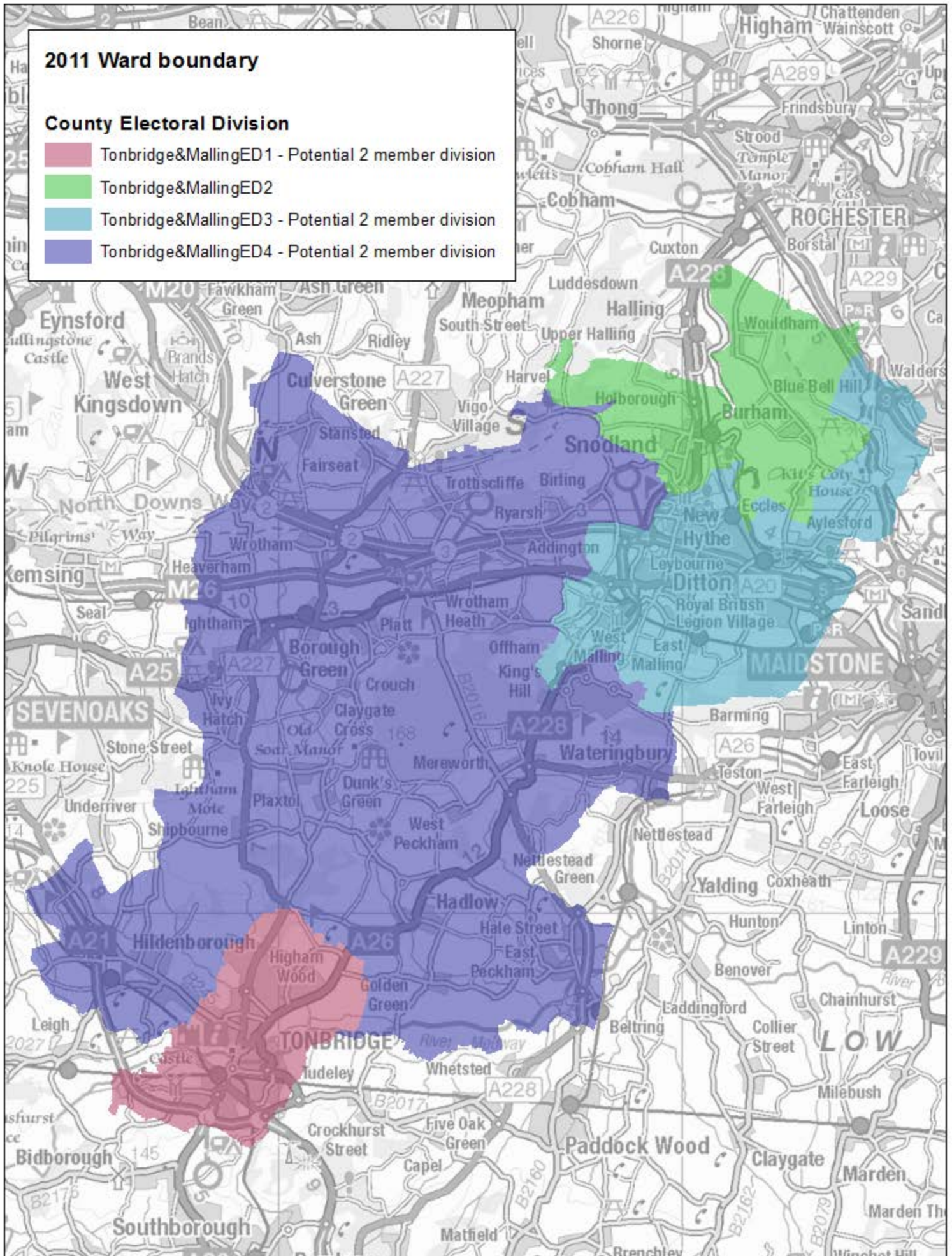
Tonbridge&MallingED1	-3.6%	-3.5%
Tonbridge&MallingED2	-2.6%	-2.6%
Tonbridge&MallingED3	2.5%	2.4%
Tonbridge&MallingED4	6.0%	6.3%

Potential two member division

Potential two member division

Potential two member division

Proposed County Electoral Division for Tonbridge & Malling



KCC Strategy-based Population Forecast (March 2014) - TUNBRIDGE WELLS

Population aged 18+ and aged 17+

This file contains unit level data for calculation purposes. It is recommended that all data is rounded to the nearest 10 before publication.

This workbook prepared by presented by Business Intelligence, Research & Evaluation, Kent County Council

Ward code	Ward Name	LA/UA code	LA/UA name	Proposed New Electoral Division	Electorate (Those aged 18+)	Electorate - including attainers (Those aged 17+)
E05005132	Broadwater	E07000116	Tunbridge Wells	TunbridgeWellsED1	4,107	4,144
E05005143	Rusthall	E07000116	Tunbridge Wells	TunbridgeWellsED1	3,623	3,657
E05005149	Speldhurst and Bidborough	E07000116	Tunbridge Wells	TunbridgeWellsED1	5,948	6,049
E05005145	St John's	E07000116	Tunbridge Wells	TunbridgeWellsED2	4,051	4,101
E05005147	Southborough and High Brooms	E07000116	Tunbridge Wells	TunbridgeWellsED2	5,108	5,148
E05005148	Southborough North	E07000116	Tunbridge Wells	TunbridgeWellsED2	5,430	5,561
E05005140	Pantiles and St Mark's	E07000116	Tunbridge Wells	TunbridgeWellsED3	4,913	4,956
E05005141	Park	E07000116	Tunbridge Wells	TunbridgeWellsED3	5,605	5,646
E05005142	Pembury	E07000116	Tunbridge Wells	TunbridgeWellsED3	4,437	4,477
E05005134	Culverden	E07000116	Tunbridge Wells	TunbridgeWellsED4	5,880	5,932
E05005144	St James'	E07000116	Tunbridge Wells	TunbridgeWellsED4	2,622	2,653
E05005146	Sherwood	E07000116	Tunbridge Wells	TunbridgeWellsED4	4,216	4,236
E05005130	Benenden and Cranbrook	E07000116	Tunbridge Wells	TunbridgeWellsED5	5,403	5,468
E05005131	Brenchley and Horsmonden	E07000116	Tunbridge Wells	TunbridgeWellsED5	3,998	4,038
E05005133	Capel	E07000116	Tunbridge Wells	TunbridgeWellsED5	1,776	1,792
E05005135	Frittenden and Sissinghurst	E07000116	Tunbridge Wells	TunbridgeWellsED5	1,669	1,692
E05005136	Goudhurst and Lamberhurst	E07000116	Tunbridge Wells	TunbridgeWellsED5	3,209	3,256
E05005137	Hawkhurst and Sandhurst	E07000116	Tunbridge Wells	TunbridgeWellsED5	4,776	4,821
E05005138	Paddock Wood East	E07000116	Tunbridge Wells	TunbridgeWellsED5	3,500	3,534
E05005139	Paddock Wood West	E07000116	Tunbridge Wells	TunbridgeWellsED5	2,787	2,824
					83,057	83,983

SUMMARY

Proposed New Electoral Division	Electorate (Those aged 18+)	Electorate - including attainers (Those aged 17+)
---------------------------------	--------------------------------	---

Total numbers

TunbridgeWellsED1	13,679	13,850
TunbridgeWellsED2	14,589	14,810
TunbridgeWellsED3	14,954	15,078
TunbridgeWellsED4	12,719	12,821
TunbridgeWellsED5	27,117	27,425
District	83,057	83,983
County ED Average	13,972	14,093

Percentages

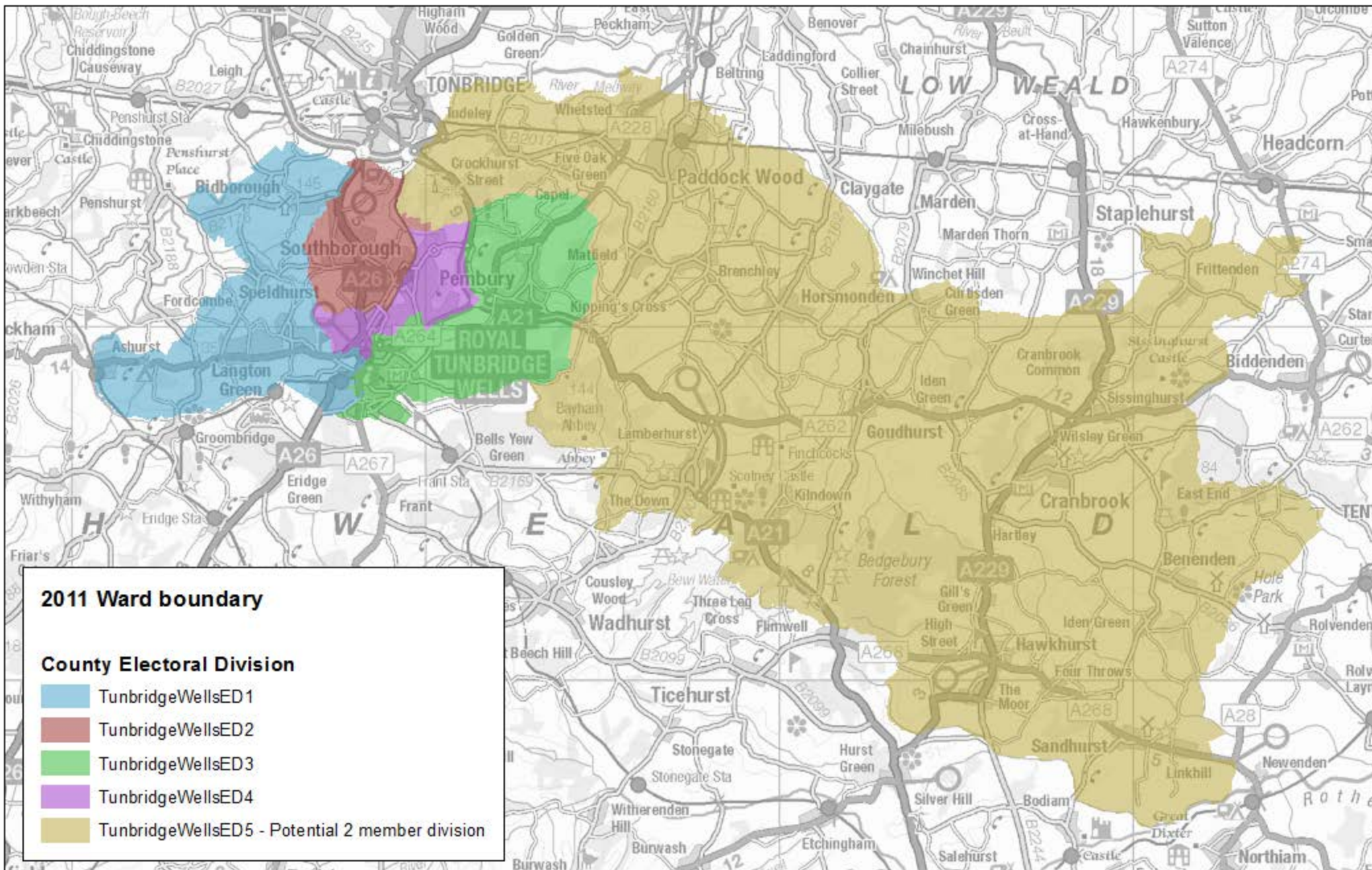
TunbridgeWellsED1	16.5%	16.5%
TunbridgeWellsED2	17.6%	17.6%
TunbridgeWellsED3	18.0%	18.0%
TunbridgeWellsED4	15.3%	15.3%
TunbridgeWellsED5	32.6%	32.7%
District	100.0%	100.0%

Variation in each ED size compared to the County average

TunbridgeWellsED1	-2.1%	-1.7%
TunbridgeWellsED2	4.4%	5.1%
TunbridgeWellsED3	7.0%	7.0%
TunbridgeWellsED4	-9.0%	-9.0%
TunbridgeWellsED5	-3.0%	-2.7%

Potential two member division

Proposed County Electoral Division for Tunbridge Wells



Source: This map produced by Business Intelligence, Kent County Council
© Crown Copyright and database right 2014, Ordnance Survey 100019238