

Haplotype networks for all 21 species used in the meta-analysis

Figure S2, Supporting Information

Tom Jenkins

March 12, 2018

List of Figures

1	<i>Carcinus maenas</i>	1
2	<i>Celleporella hyalina</i>	2
3	<i>Cerastoderma edule</i>	3
4	<i>Conger conger</i>	4
5	<i>Dicentrarchus labrax</i>	5
6	<i>Labrus bergylta</i>	6
7	<i>Macoma balthica</i>	7
8	<i>Maja brachydactyla</i>	8
9	<i>Modiolus modiolus</i>	9
10	<i>Nassarius nitidus</i>	10
11	<i>Nassarius reticulatus</i>	11
12	<i>Neomysis integer</i>	12
13	<i>Owenia fusiformis</i>	13
14	<i>Pomatoschistus microps</i>	14
15	<i>Pomatoschistus minutus</i>	15
16	<i>Palinurus elephas</i>	16
17	<i>Pectinaria koreni</i>	17
18	<i>Pelvetia canaliculata</i>	18
19	<i>Raja clavata</i>	19
20	<i>Solea solea</i>	20
21	<i>Symphodus melops</i>	21

Carcinus maenas

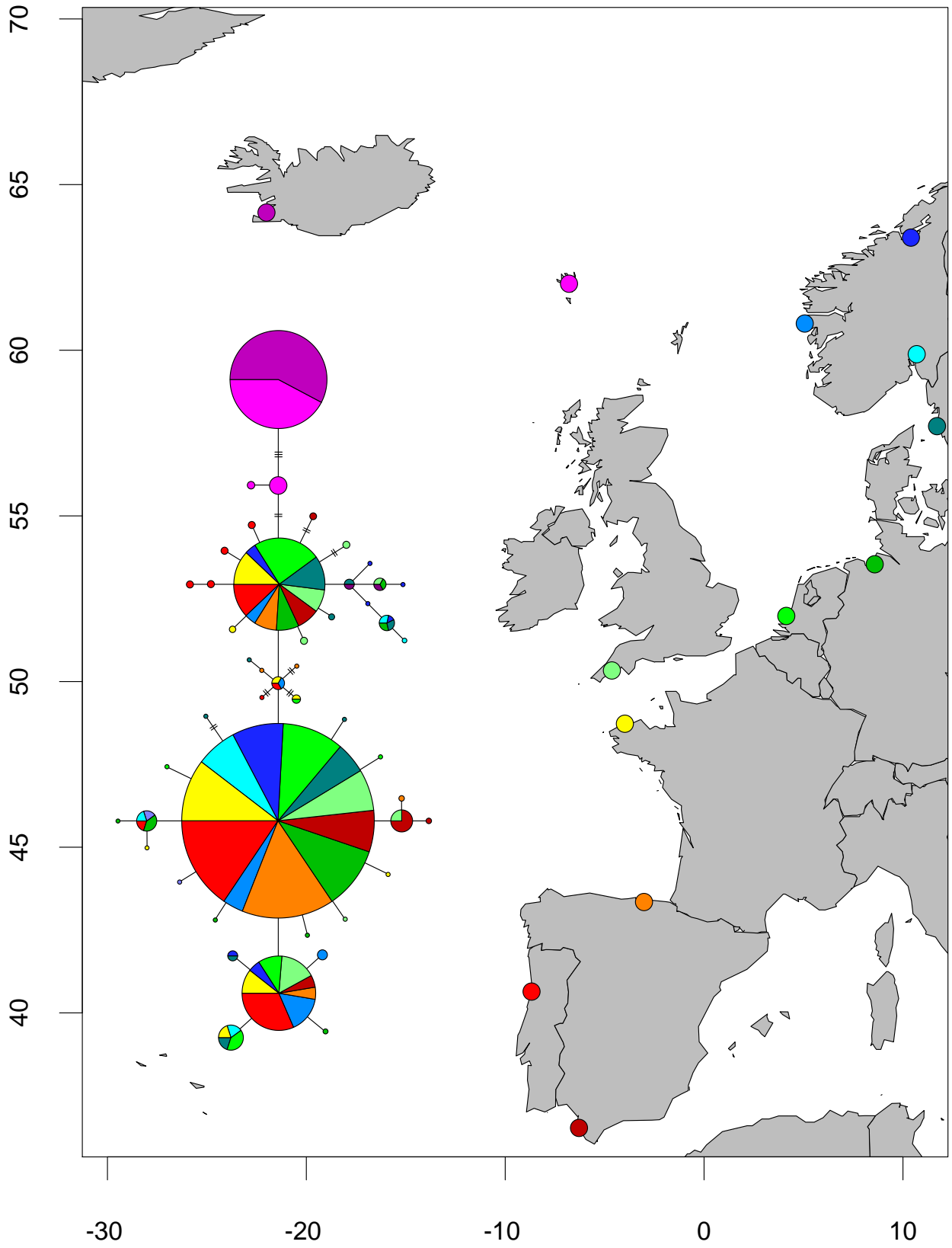


Figure 1

Celleporella hyalina

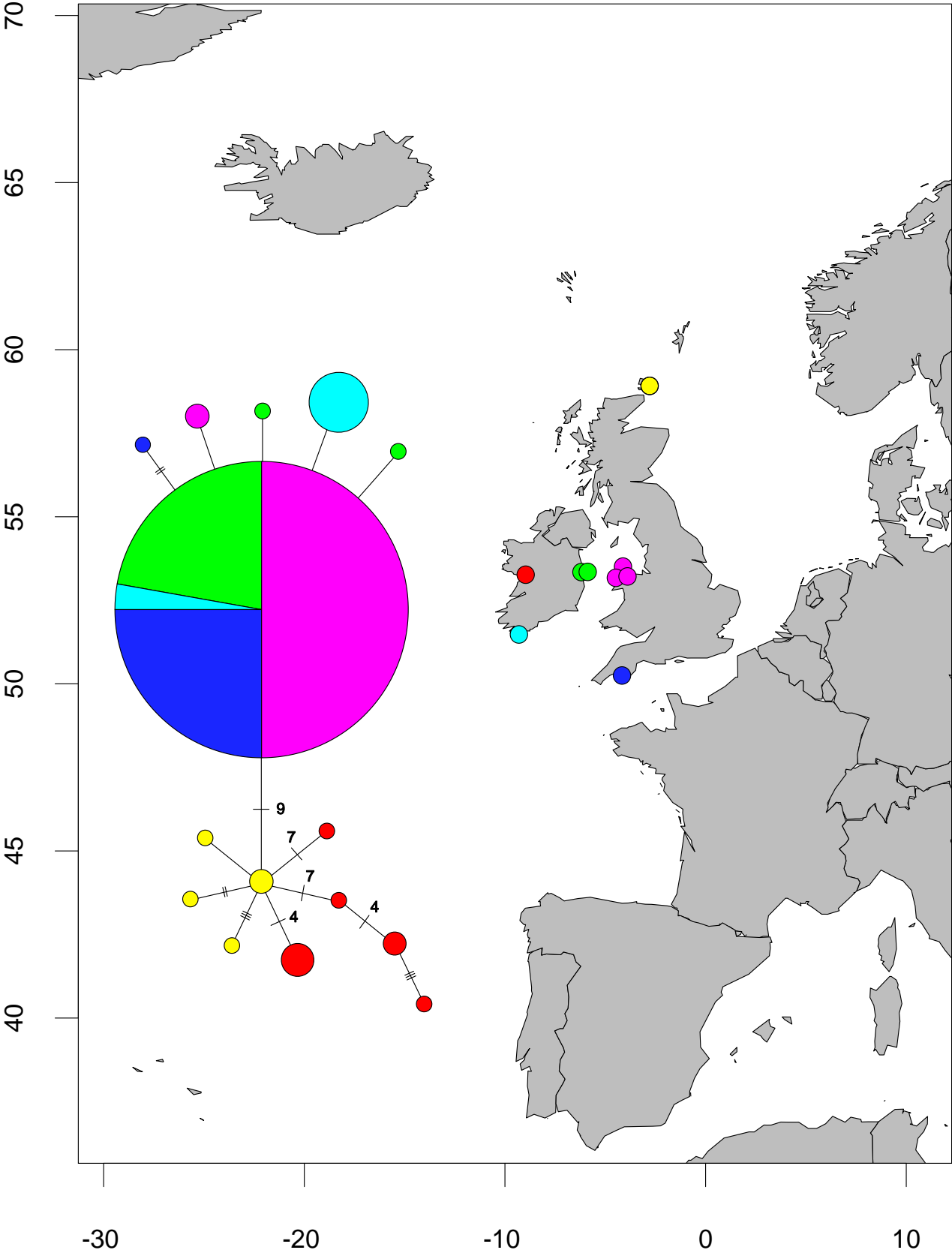


Figure 2

Cerastoderma edule

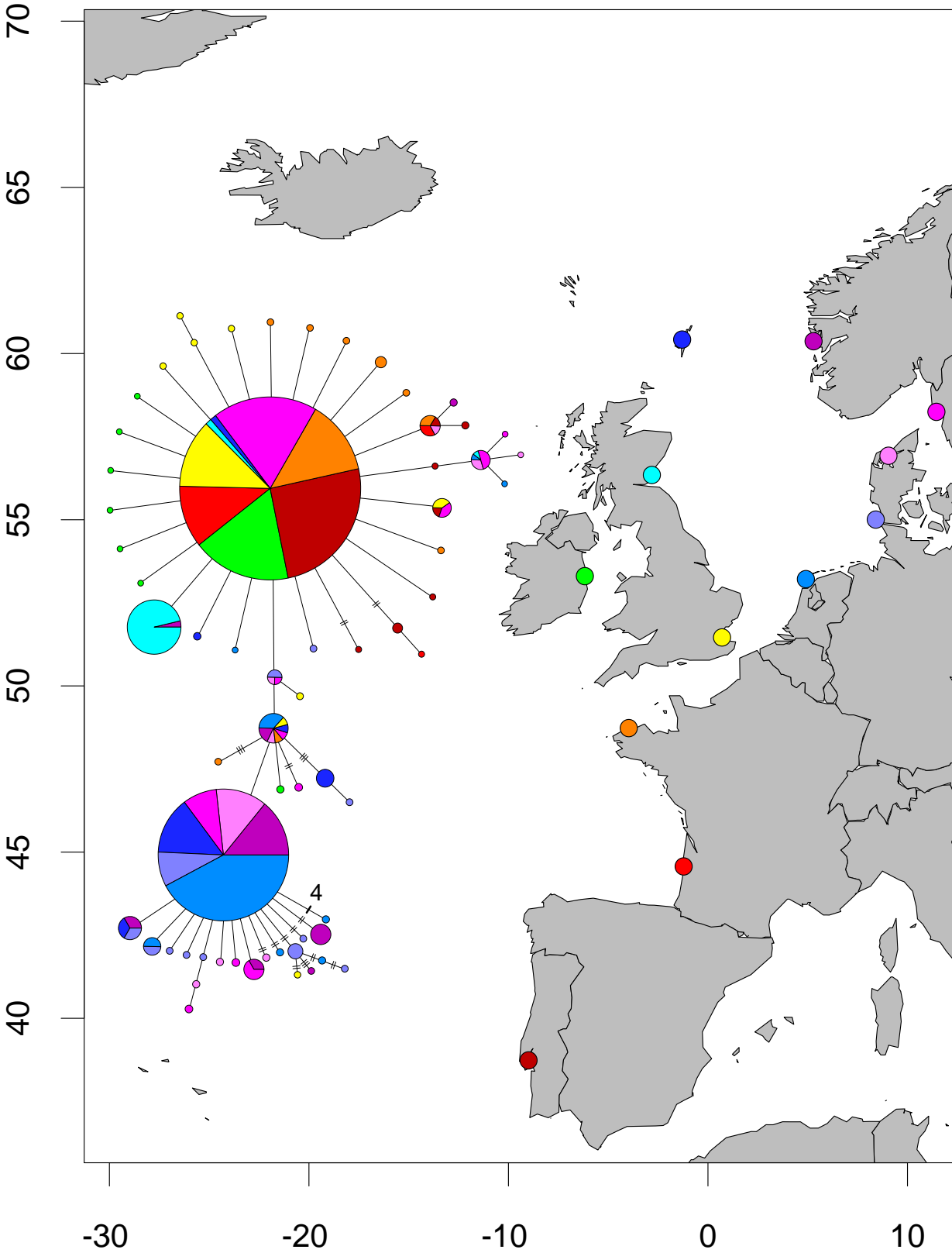


Figure 3

Conger conger

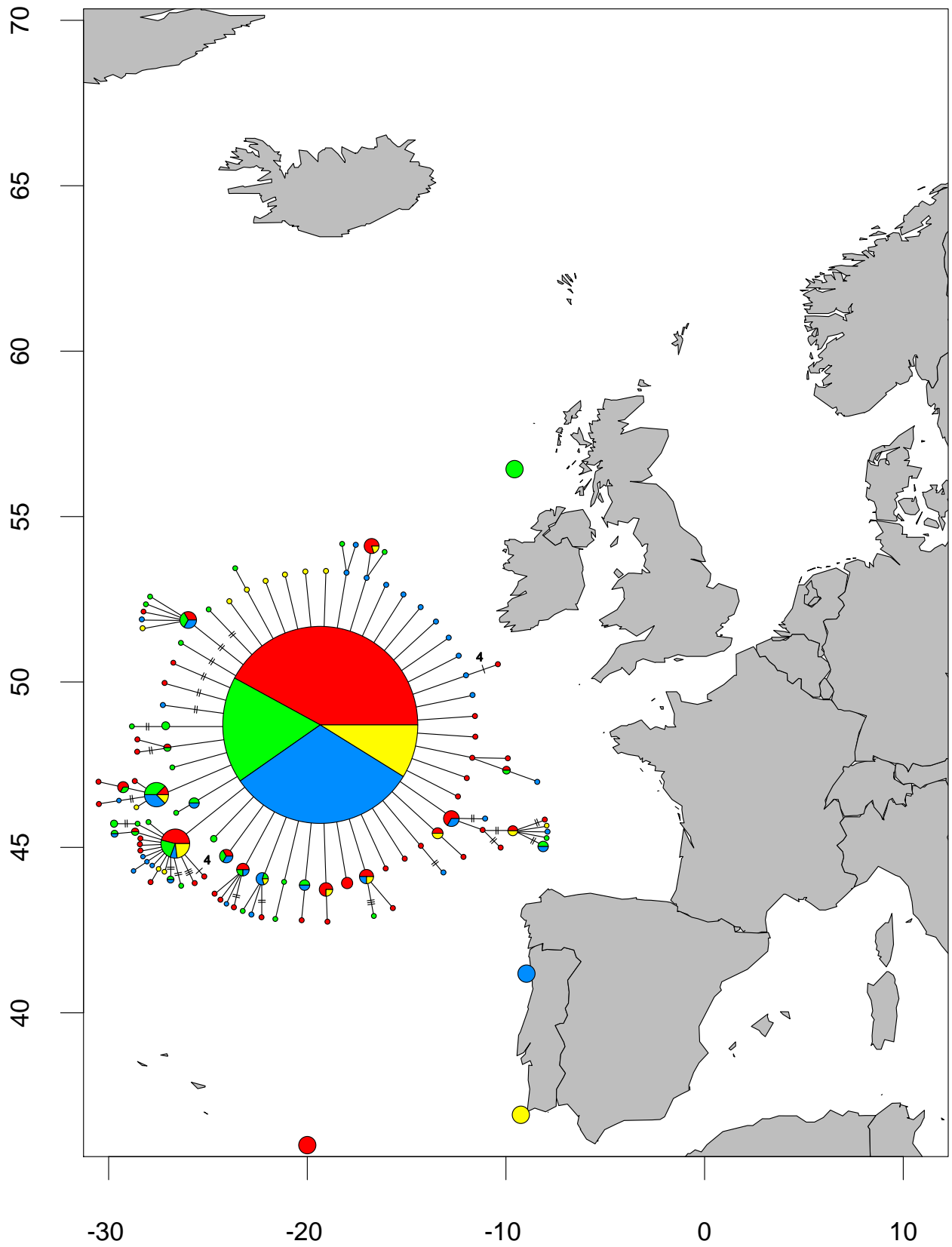


Figure 4

Dicentrarchus labrax

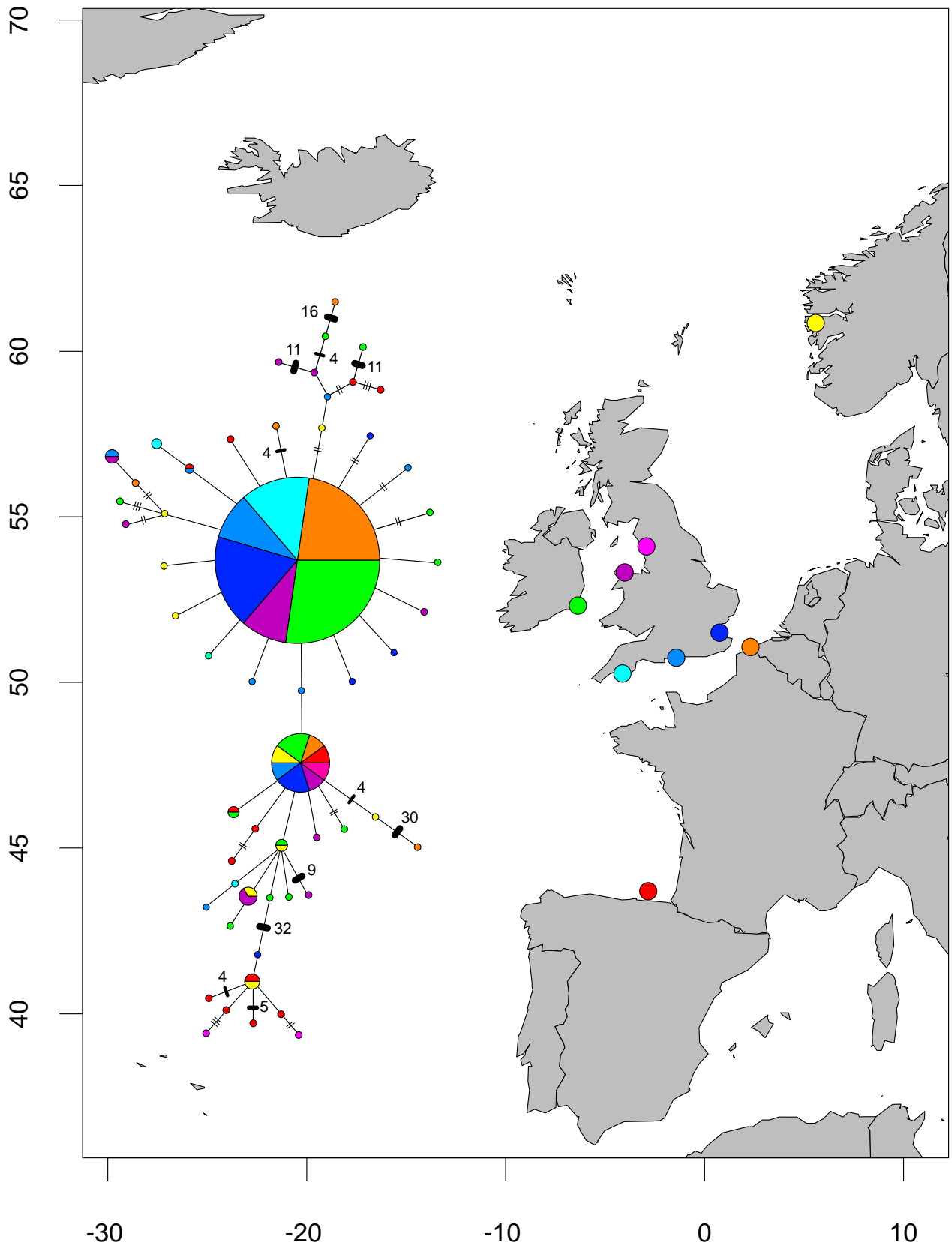


Figure 5

Labrus bergylta

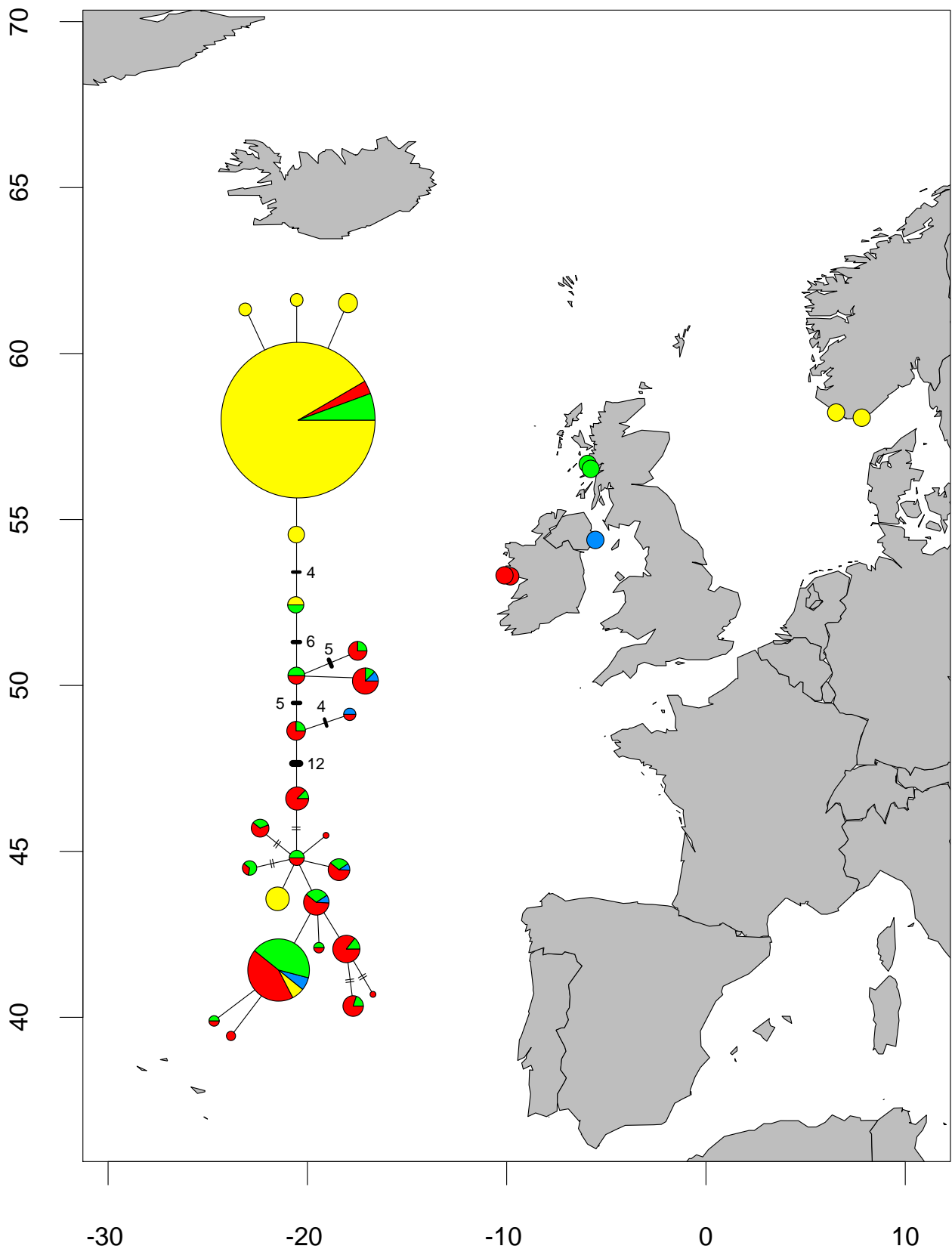


Figure 6: Only haplotypes represented by more than one sequence are shown.

Macoma balthica

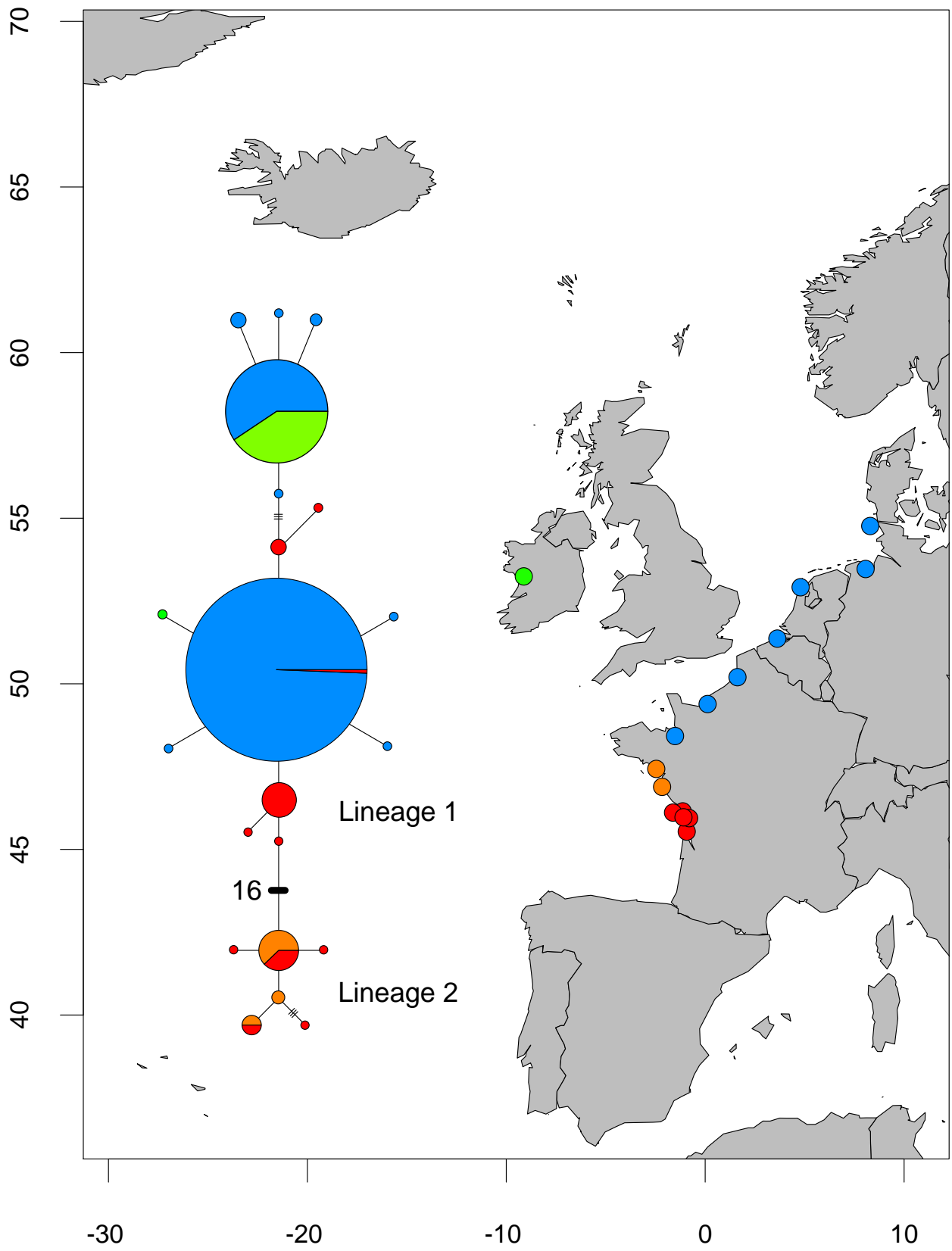


Figure 7

Maja brachydactyla

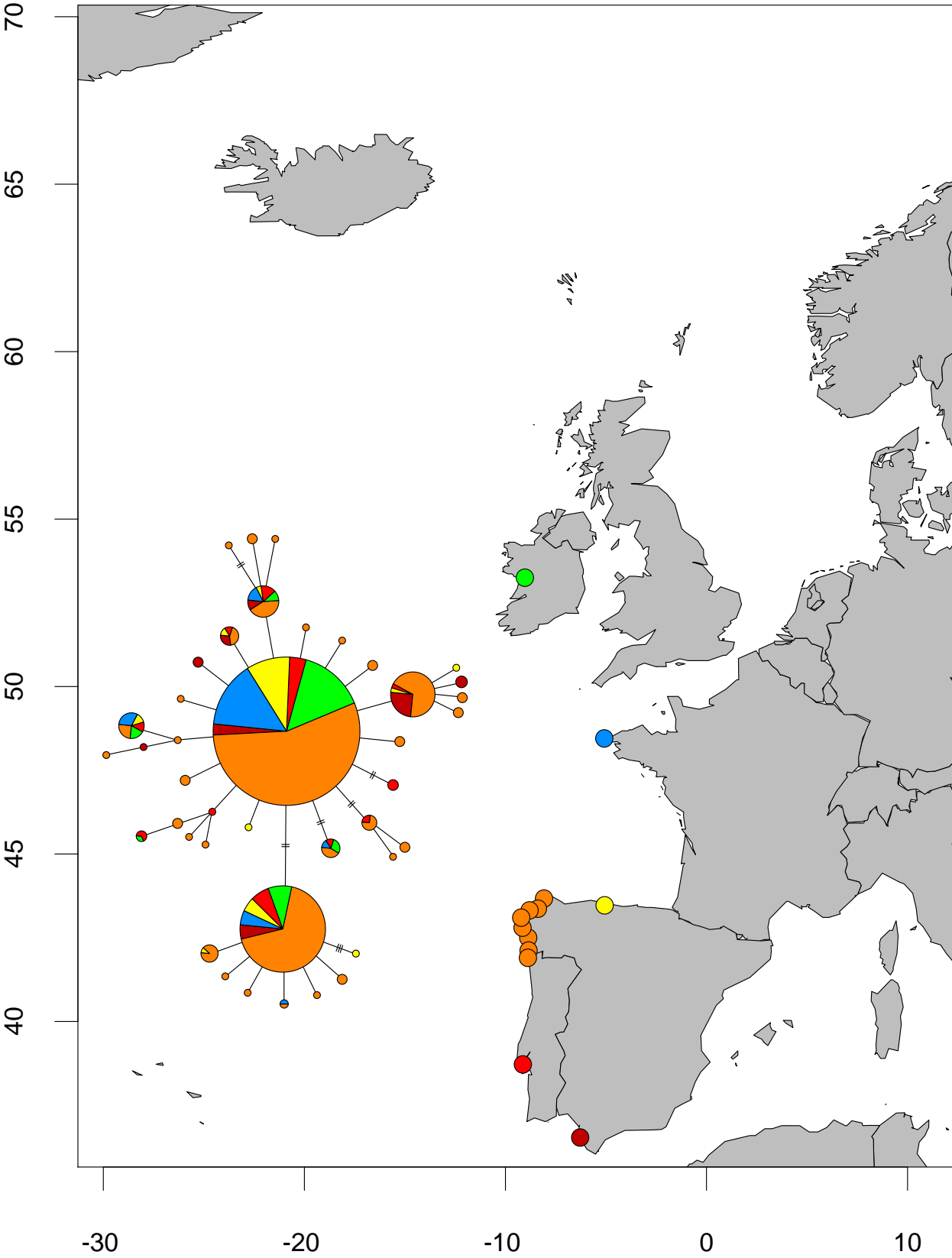


Figure 8

Modiolus modiolus

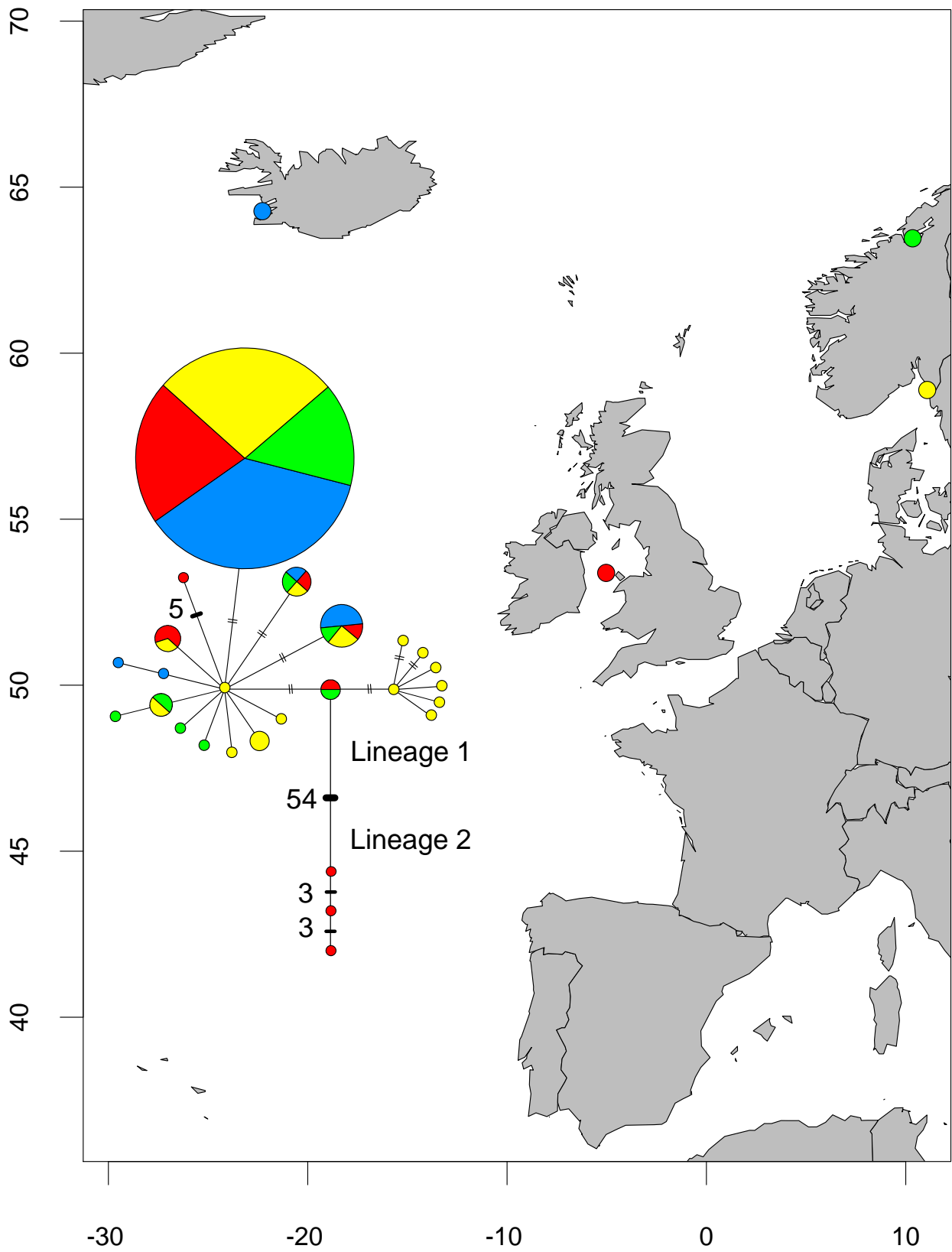


Figure 9

Nassarius nitidus

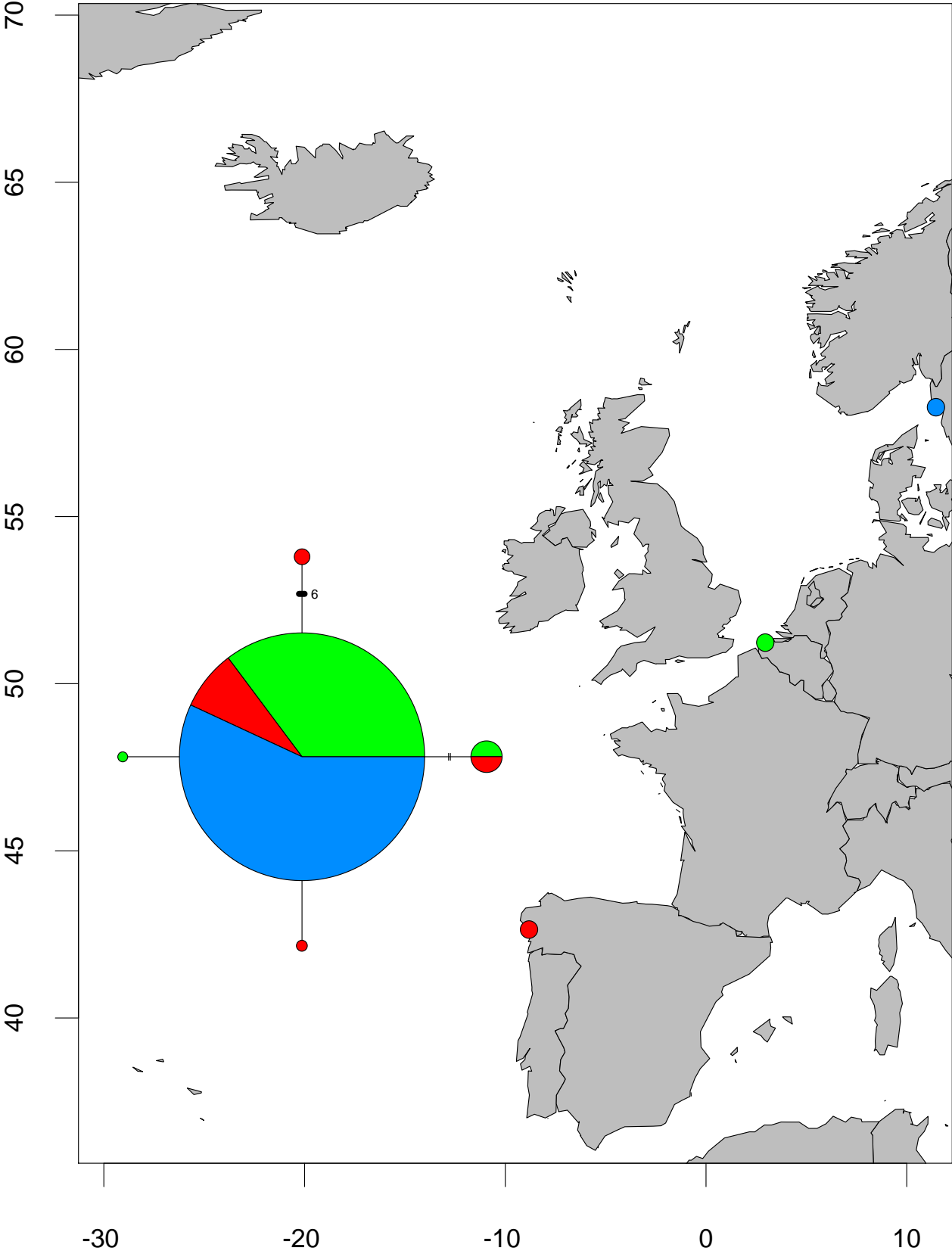


Figure 10

Nassarius reticulatus

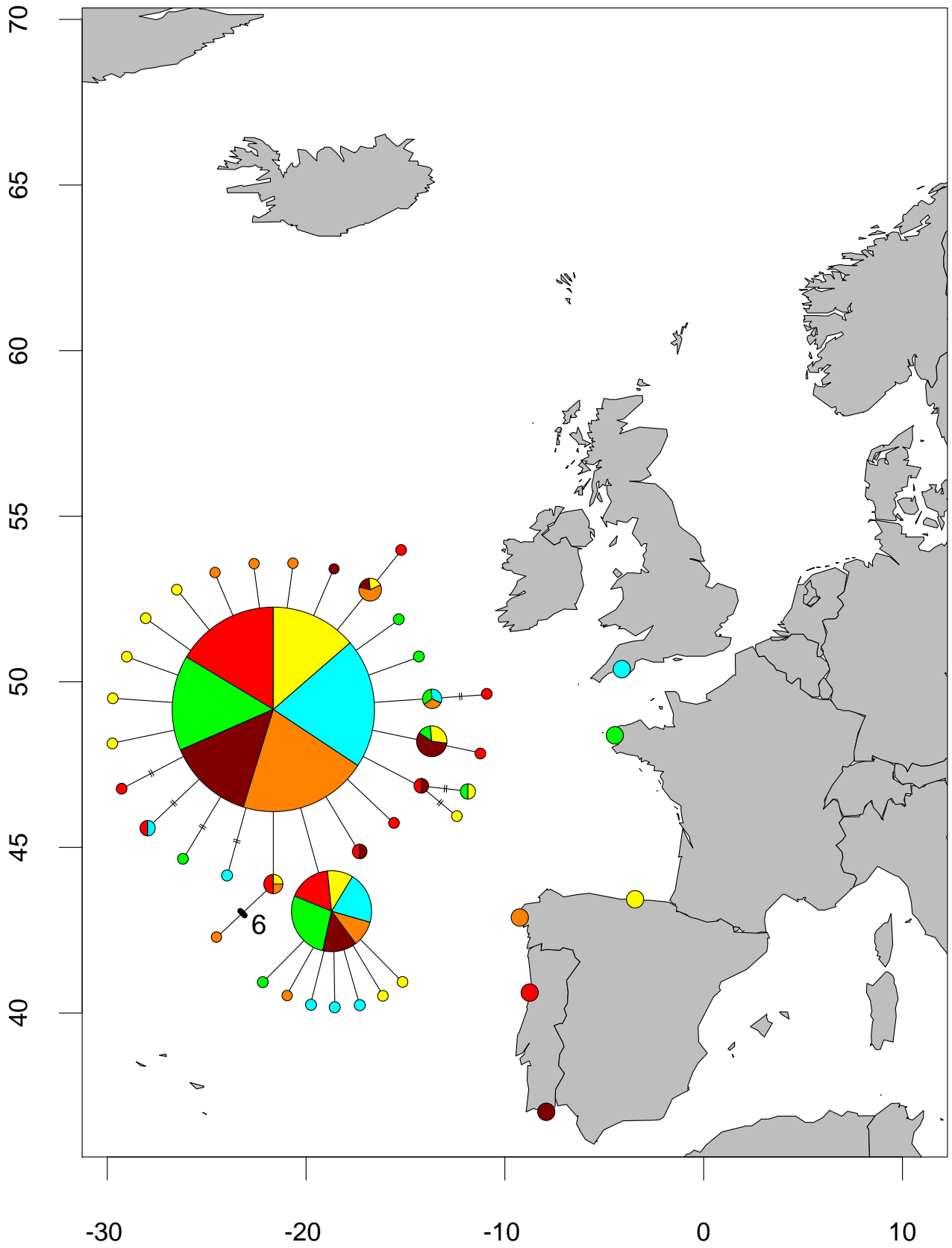


Figure 11

Neomysis integer

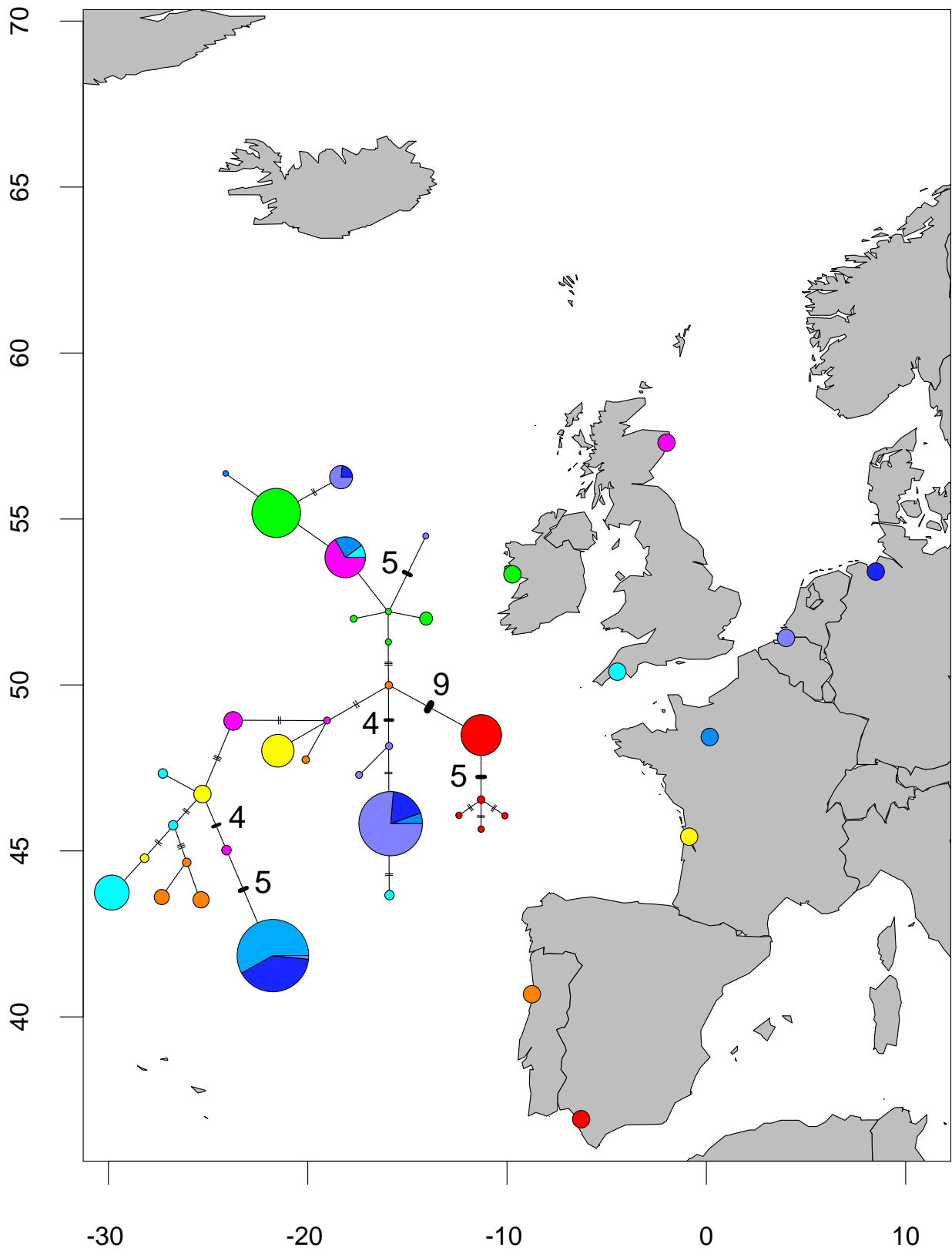


Figure 12

Owenia fusiformis

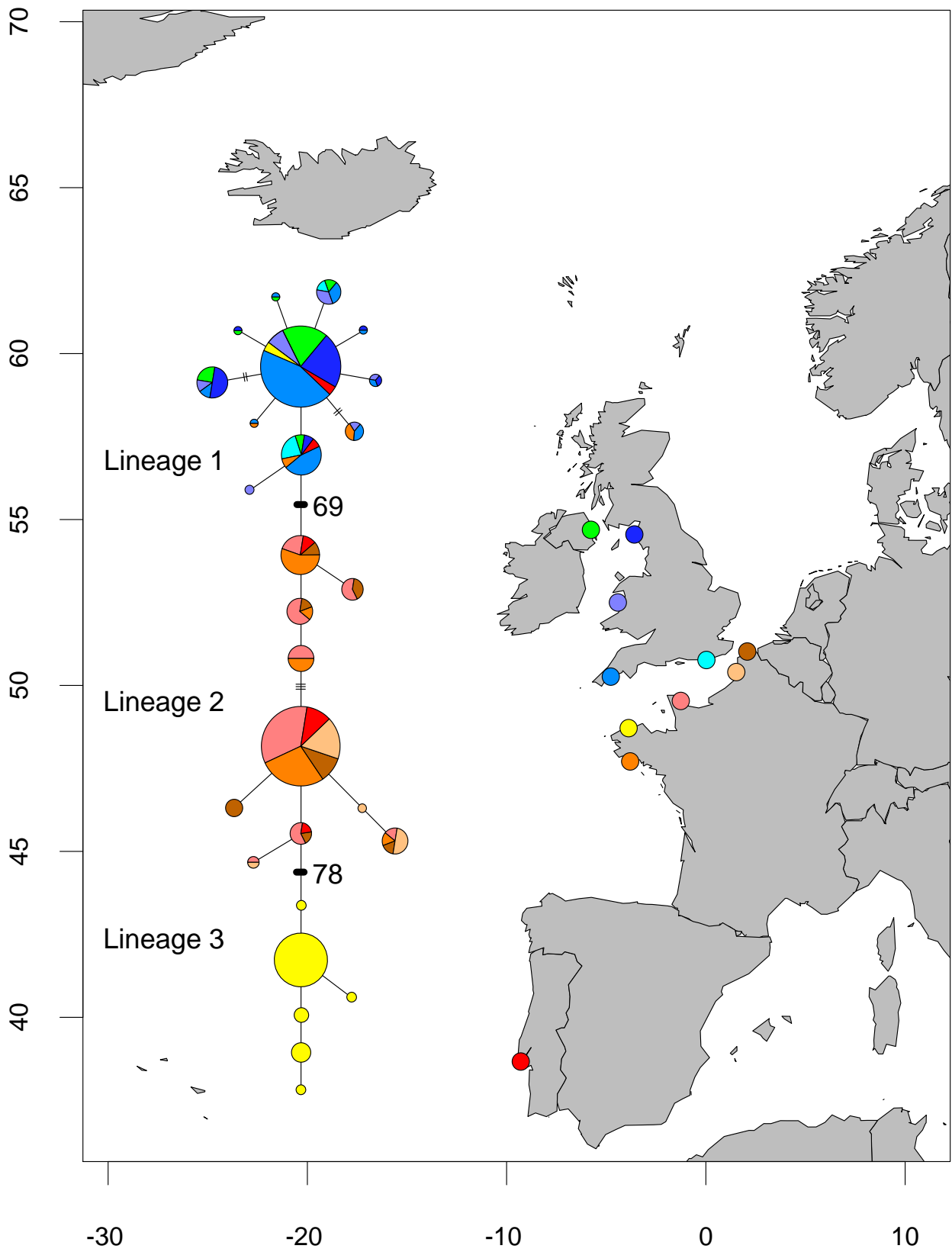


Figure 13: Only haplotypes represented by more than one sequence are shown.

Pomatoschistus microps

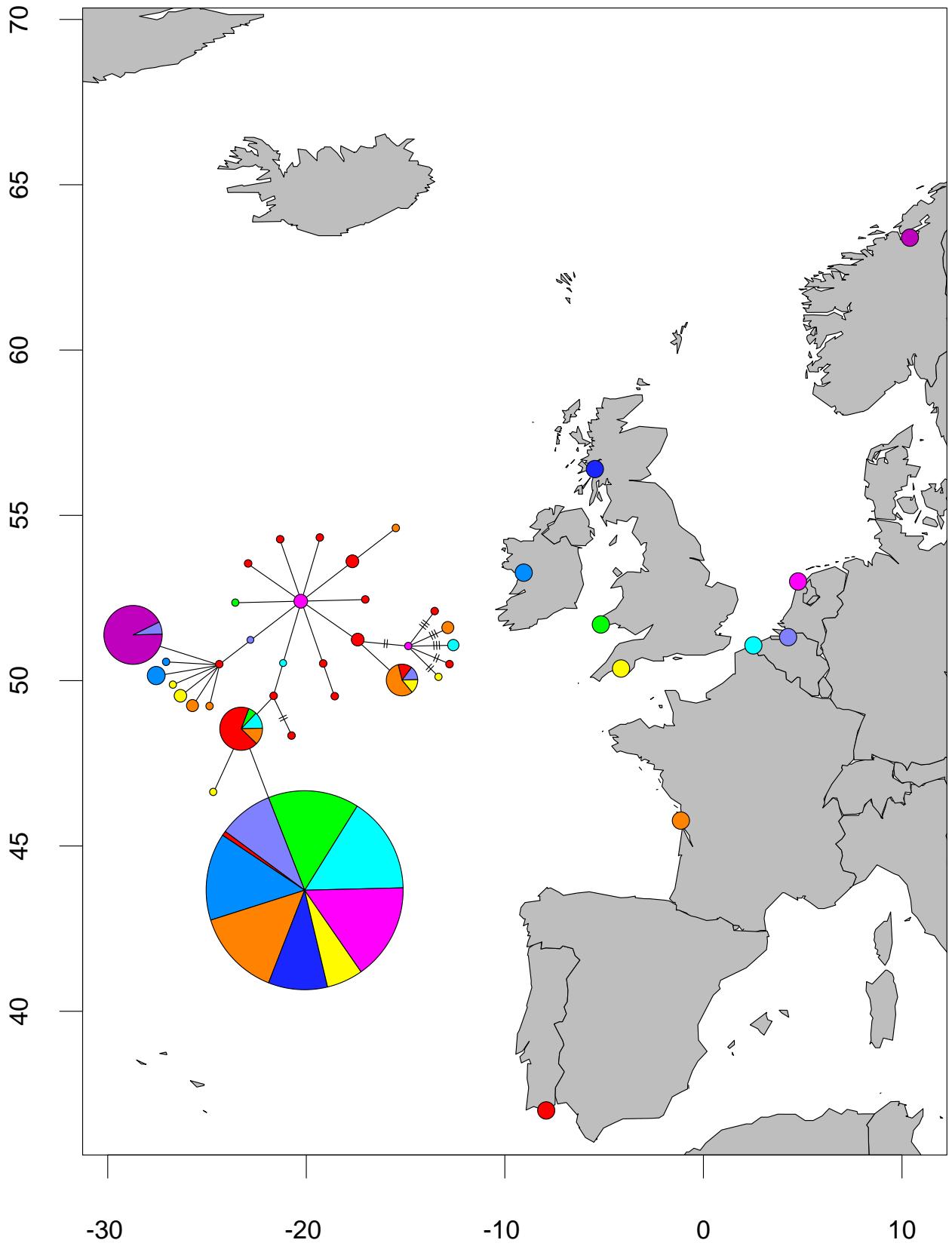


Figure 14

Pomatoschistus minutus

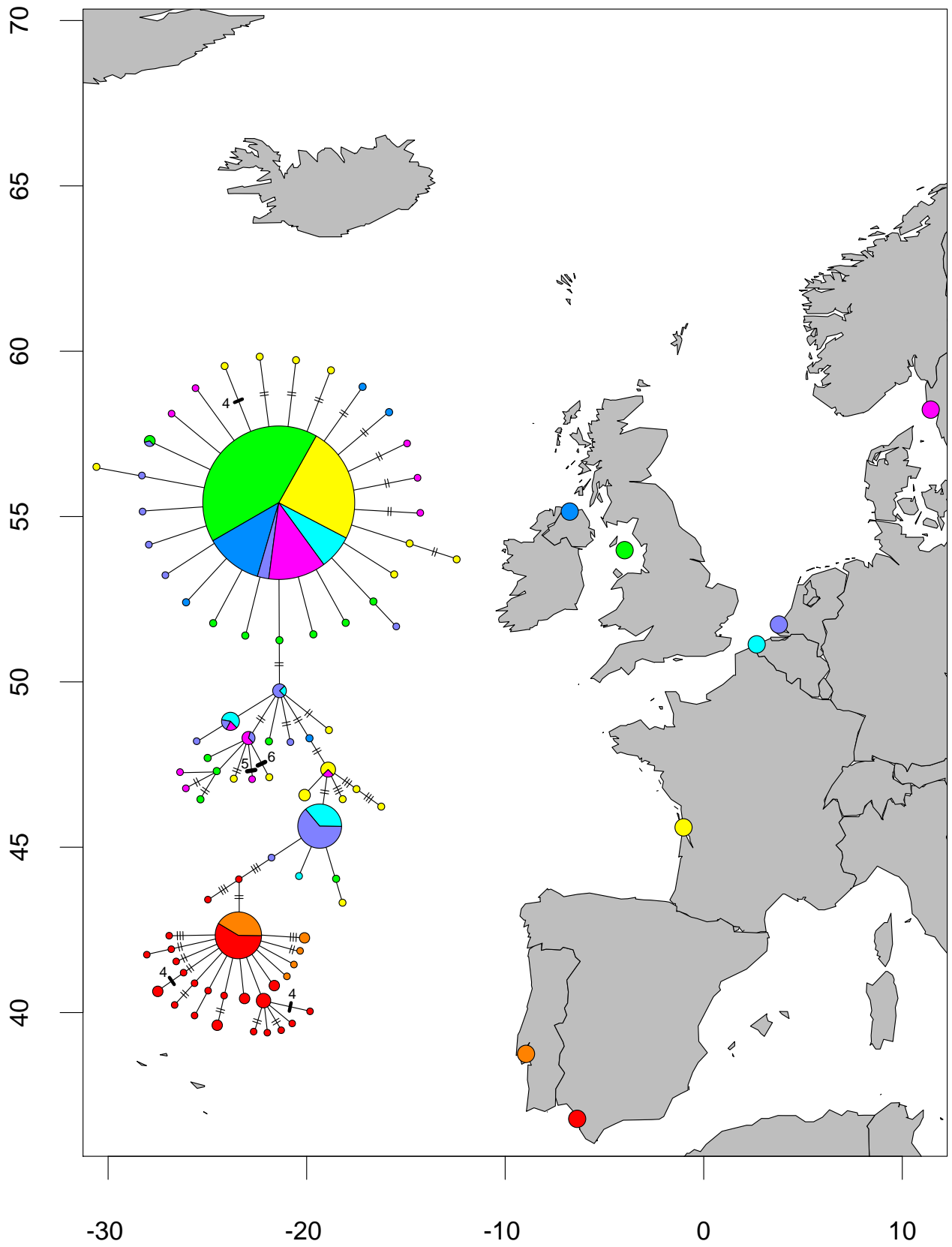


Figure 15

Palinurus elephas

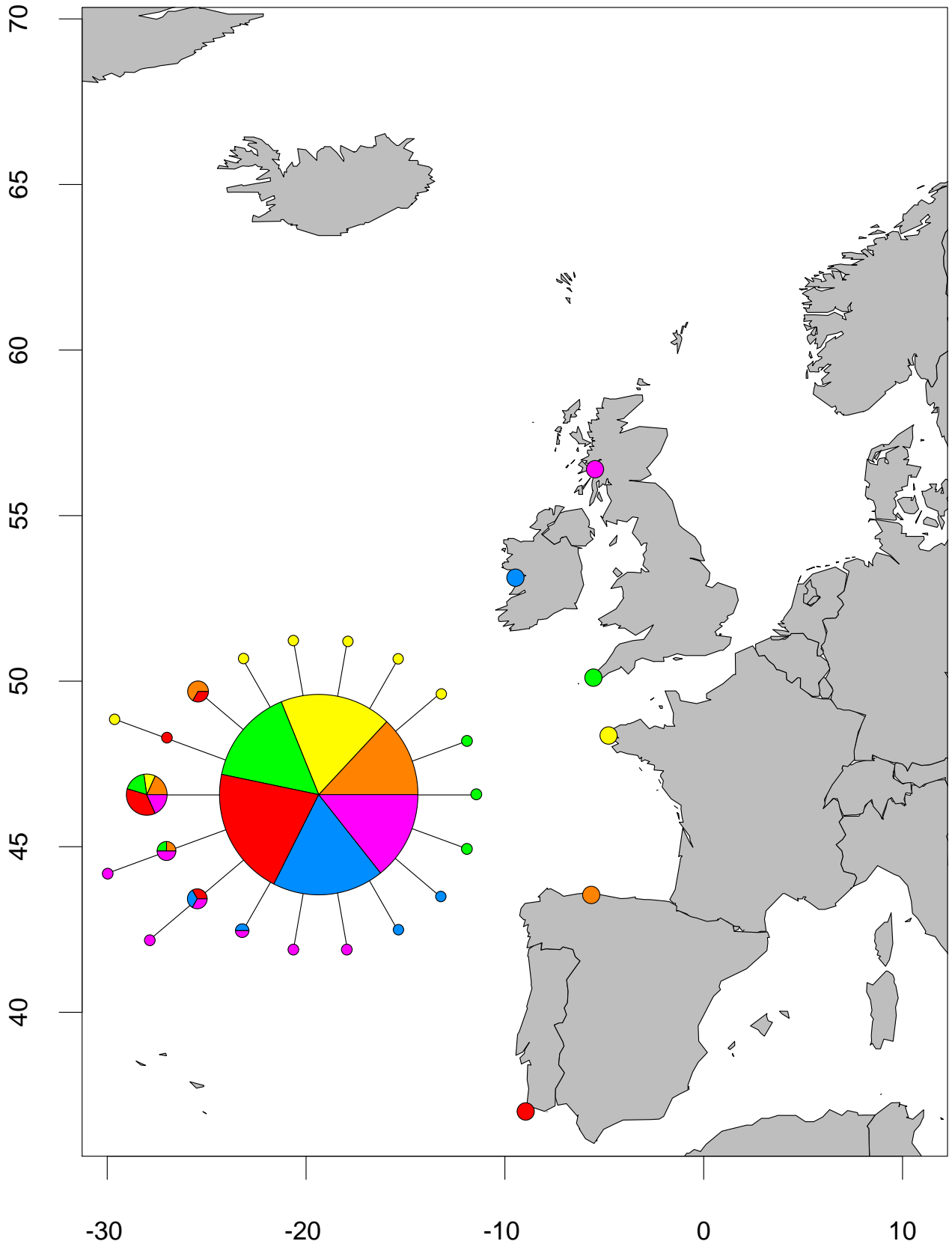


Figure 16

Pectinaria koreni

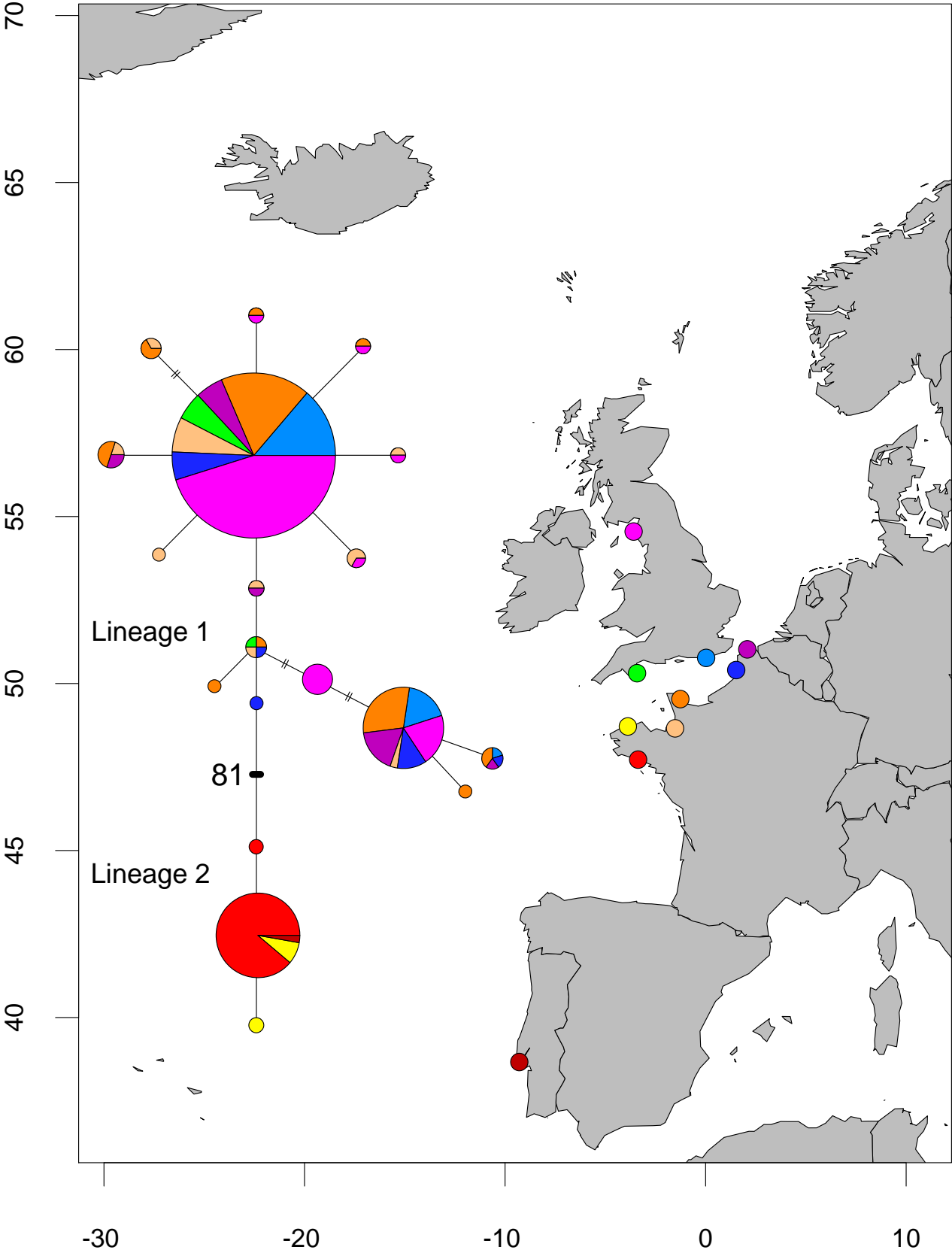


Figure 17: Only haplotypes represented by more than one sequence are shown.

Pelvetia canaliculata

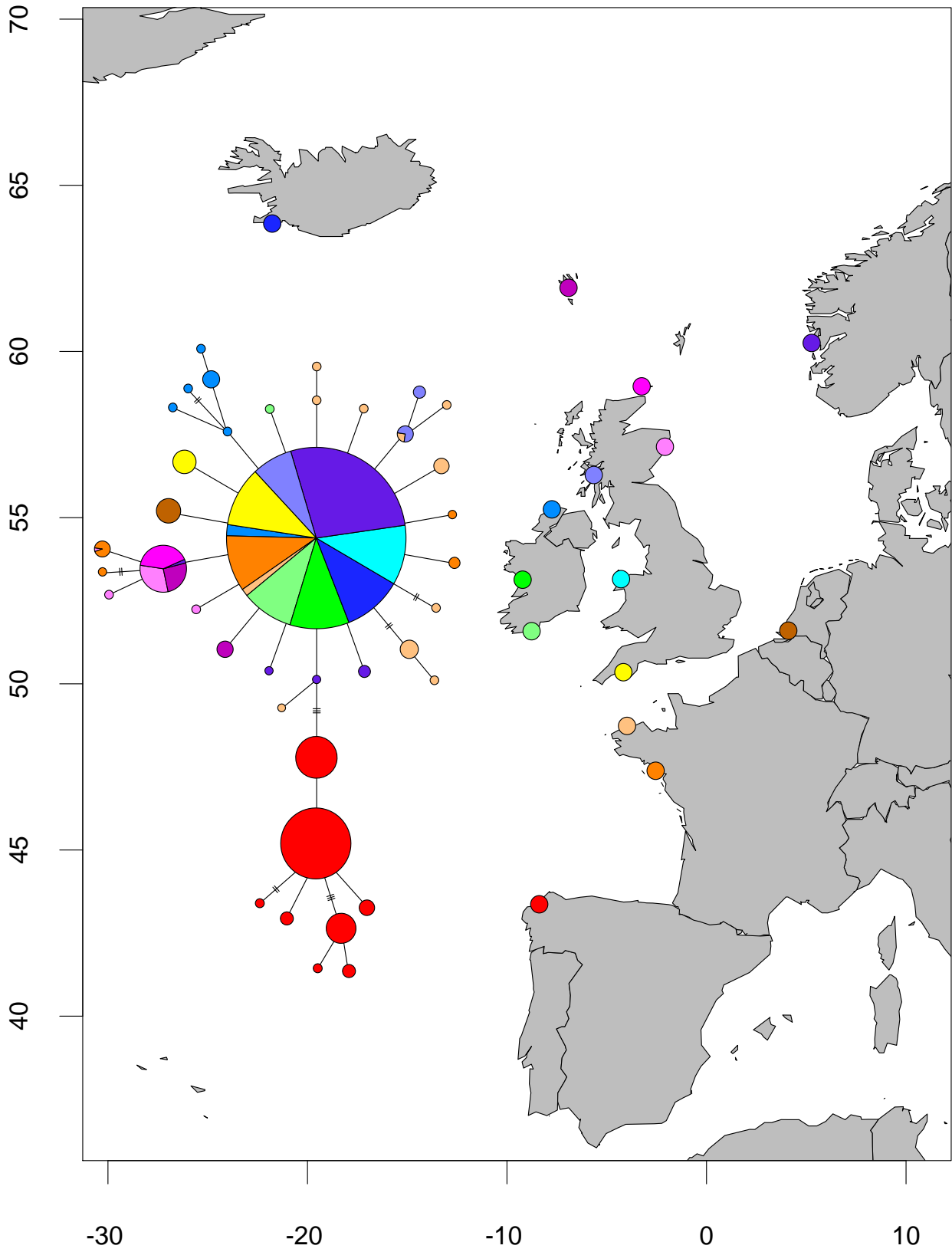


Figure 18

Raja clavata

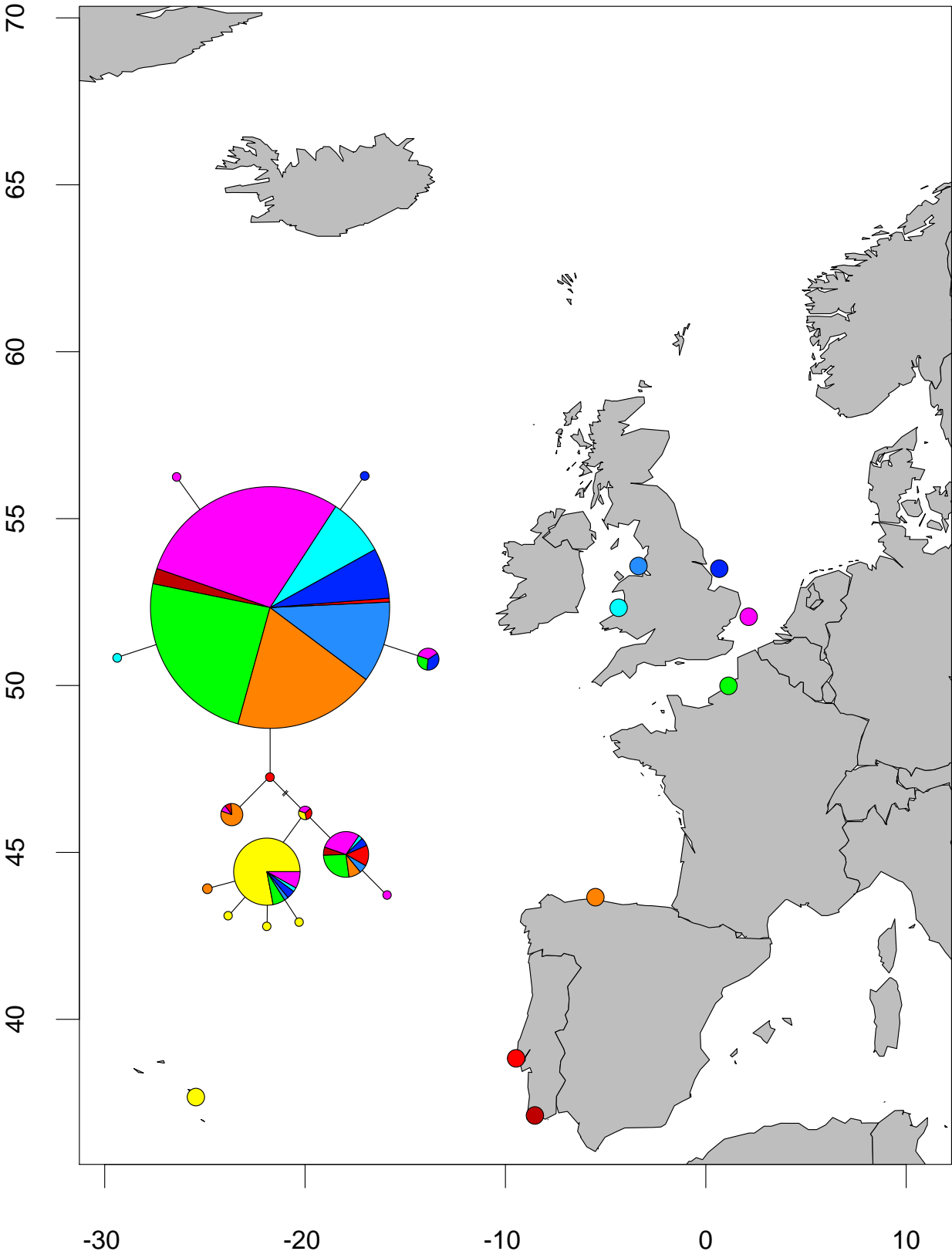


Figure 19

Solea solea

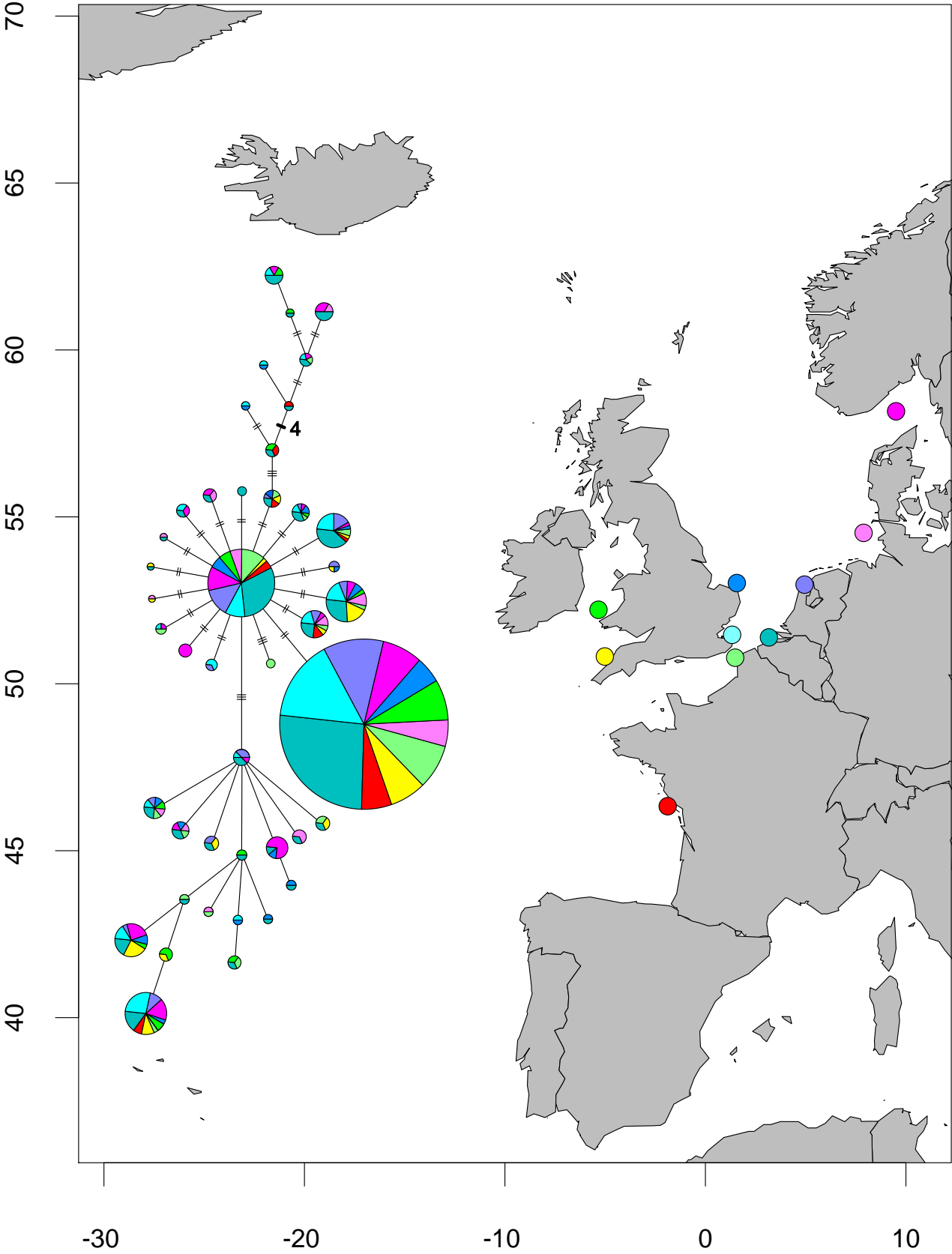


Figure 20

Symphodus melops

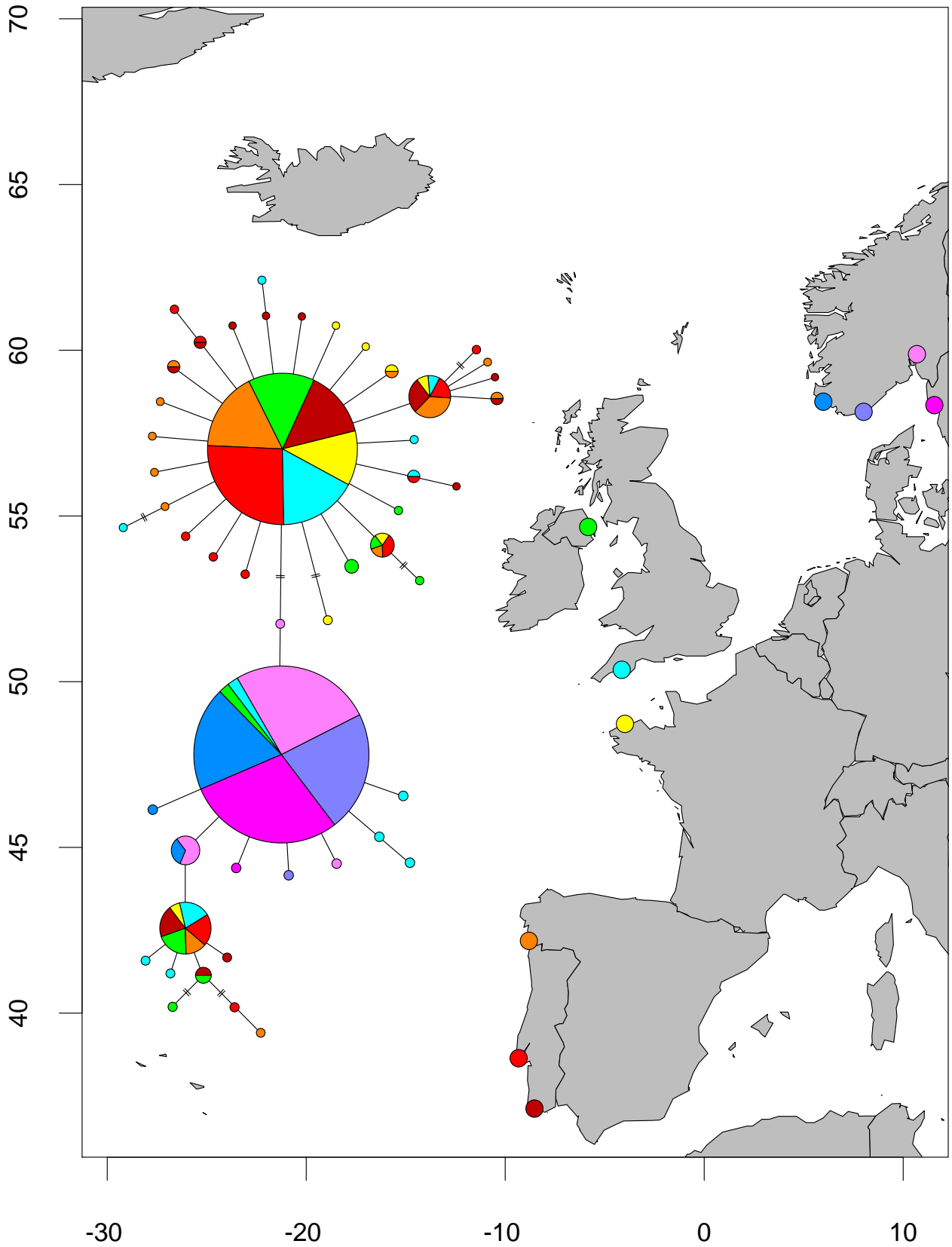


Figure 21