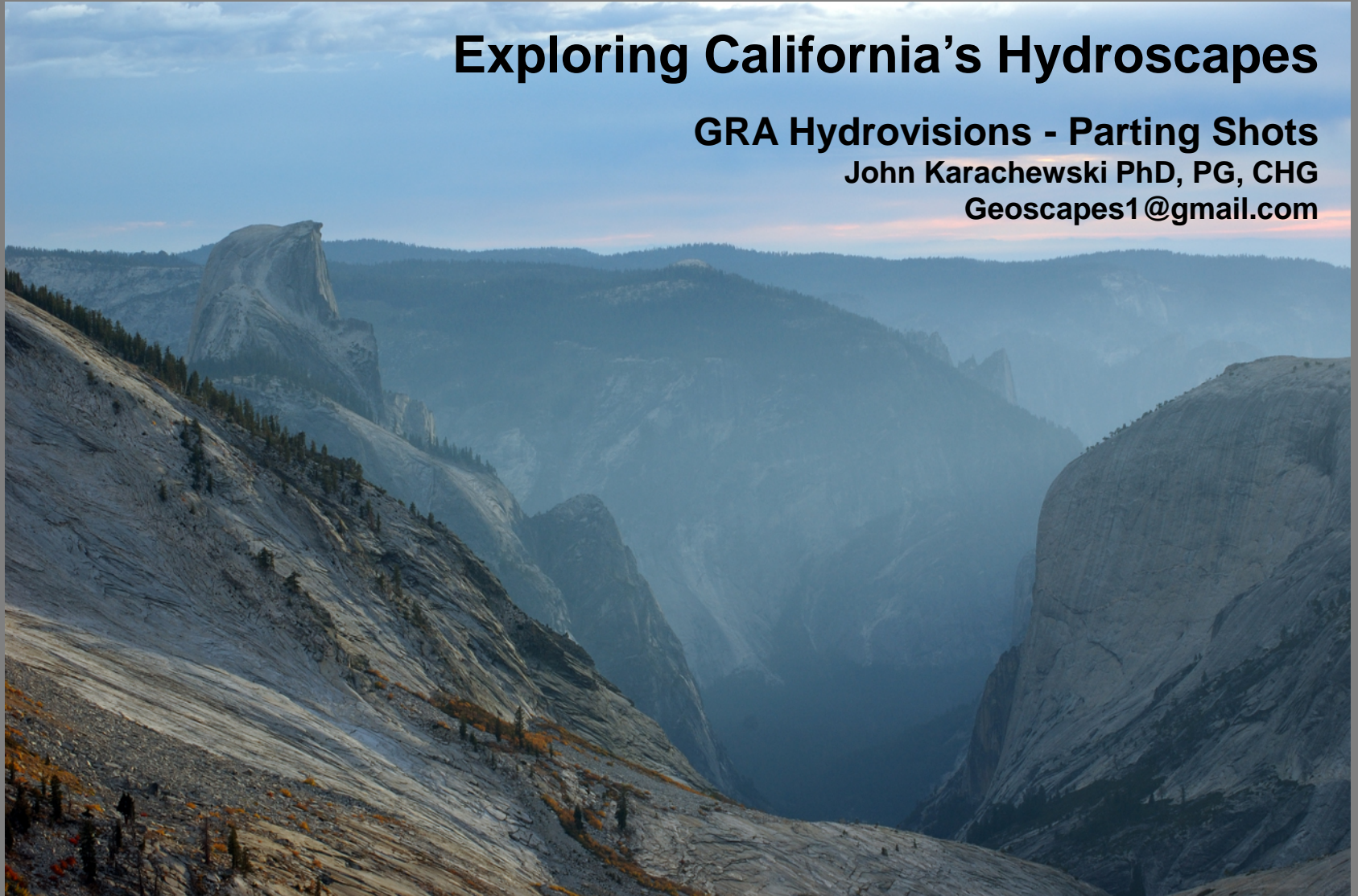


Exploring California's Hydroscaapes

GRA Hydrovisions - Parting Shots

John Karachewski PhD, PG, CHG

Geoscapes1@gmail.com





Groundwater Resources Association of California



[ABOUT](#) [MEMBERSHIP](#) [EVENTS](#) [BRANCHES](#) [LEG UPDATES](#) [EDUCATION](#) [PUBLICATIONS](#) [AWARDS](#) [RESOURCES](#)

[GRA PUBLICATIONS](#)

[HYDROVISIONS ONLINE](#)

[HYDROVISIONS ADVERTISING](#)

[CA GROUNDWATER MGMT](#)

[BSMAR](#)

[CONTACT / FEEDBACK](#)

[MEMBER LOG IN](#)

[HOME PAGE](#)

HYDROVISIONS NEWSLETTER

HYDRO VISIONS

Current Issue:

Volume 24, Number 3 • Fall 2015

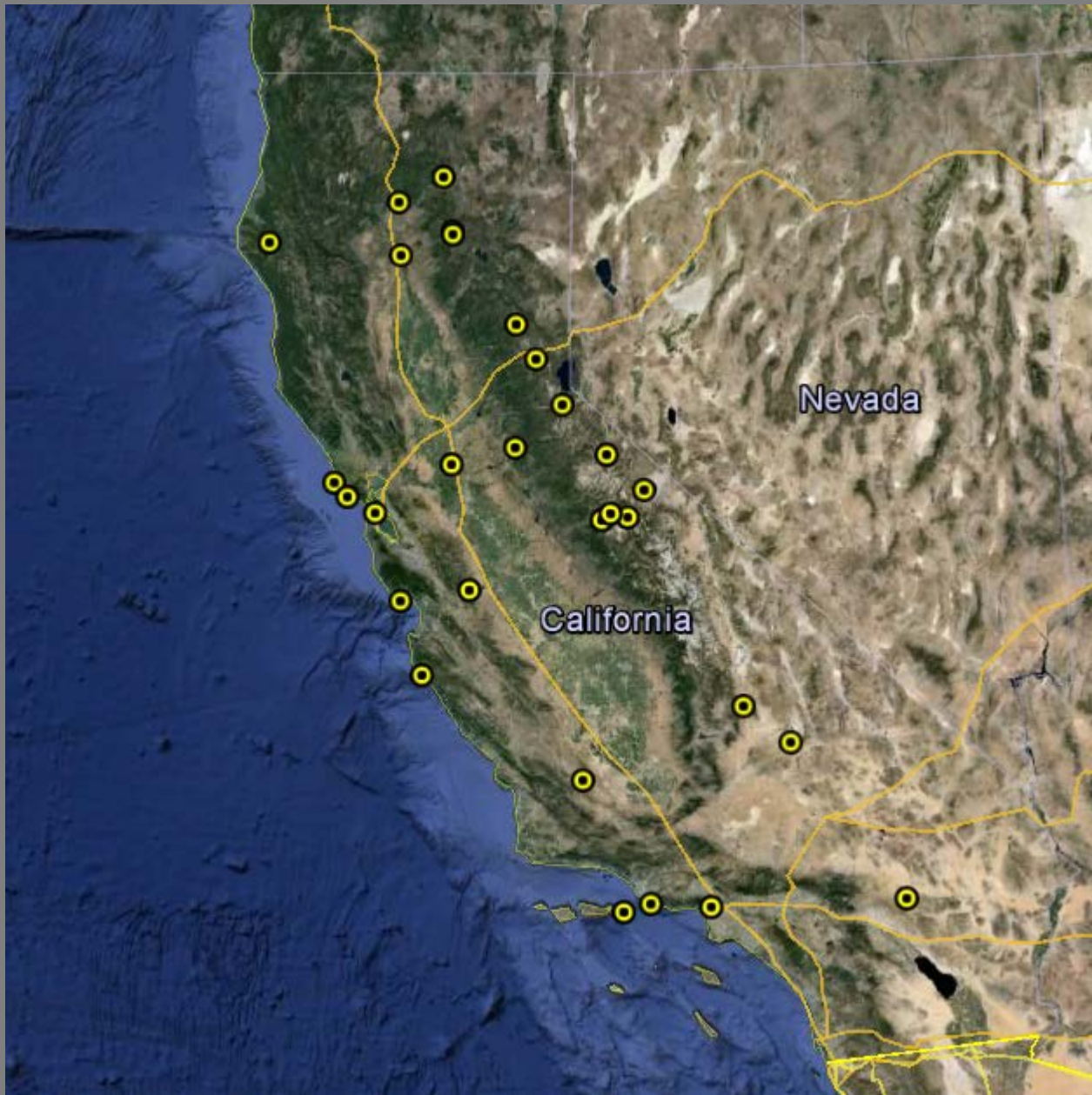
Call For HydroVisions Articles

GRA is requesting technical articles and letters to the editor for future issues.

Please submit to editor@grac.org.

[View Author Guidelines](#)

<http://www.grac.org/hydrovisions.asp>





McArthur-Burney Falls State Park
Spring 2009



Mugu Lagoon
Summer 2009



Tenaya Canyon, Yosemite National Park

Fall 2009



Trona Pinnacles National Natural Landmark

Winter 2009



West Walker River, Toiyabe National Forest
Spring 2010



Staircase Falls, Yosemite National Park

Summer 2010



Lassen Peak, Lassen Volcanic National Park

Fall 2010



Wetlands Restoration, Cosumnes River Preserve

Winter 2010



Anacapa Island, Channel Islands National Park

Summer 2011



**Dyerville in Humboldt Redwoods State Park
Winter 2012**



Wallace Creek, Carrizo Plain National Monument
Spring 2013



Big Sur River, Pfeiffer-Big Sur State Park
Summer 2013



Negit Island and Mono Lake

Fall 2013



Fossil Falls

Spring 2014



Tidal columns, San Francisco Bay Trail

Summer 2014



Paternoster lakes, Young America Lake and Sardine Lakes

Tahoe National Forest

Fall 2014



**Palomarin Beach, Point Reyes National Seashore
Spring 2015**



Carbonate vent structures, Miocene Santa Cruz Mudstone

Summer 2015



Lyell Glacier, Yosemite National Park

Fall 2015



La Brea Tar Pits, Los Angeles

Winter 2015



Upper Echo Lake, Desolation Wilderness
Spring 2016



Lake Tahoe sunrise

Summer 2016