

Get Involved!

EALT protects ecologically significant land which is important habitat for many butterfly species. Support EALT by:

Volunteering! Visit ealt.ca/volunteer or email info@ealt.ca to get started.

Donating! Visit ealt.ca/donate for more information.

Plant native flowers in your garden to benefit butterflies. You can obtain native flower seeds from the Edmonton Native Plant Group.

Passionate about identifying moths and butterflies? Join the Alberta Lepidopterists' Guild, visit <http://www.biology.ualberta.ca/uasm/alg/> for more information.

Sources

<http://www.butterfliesandmoths.org/>
<http://www.insectsofalberta.com/>

Contact Us

#101, 10471 – 178 Street
Edmonton, AB T5S 1R5
780-483-7578 | info@ealt.ca
ealt.ca | @EdAreaLandTrust



Moth Identification Guide

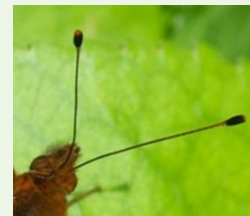


Introduction

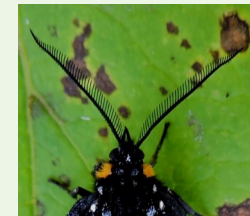
The Edmonton and Area Land Trust (EALT) is a non-profit organization dedicated to conserving the region's natural areas through community stewardship. We work towards an Edmonton region where natural area systems and their wildlife are valued and preserved for future generations.

On our conservation lands, it is common to see members of the Lepidoptera order, which includes butterflies and moths. These insects share many similarities such as a life cycle that includes larvae, pupae, and flying adult stages. They also play a key role in their ecosystem as pollinators.

The easiest way to tell the difference between these astonishing flying insects is to look at their antennae. If the antennae are thickened or club-like on the end, you are looking at a butterfly. If the antennae are feathered or thread-like, you have found a moth.



Butterfly Antennae



Moth Antennae

Once you have identified the species as a moth, use this guide to determine if it is one of these species, common to the Edmonton region and EALT natural areas.



Betty Fisher

Police Car Moth
Gnophaela vermiculata
Wing Span: 54 mm
Habitat: Open, wooded areas of the foothills and boreal forest.

Bold-feathered Grass Moth

Herpetogramma pertextalis
Wing Span: 22 mm
Host plant: Low plants, violets.



Colleen Raymond

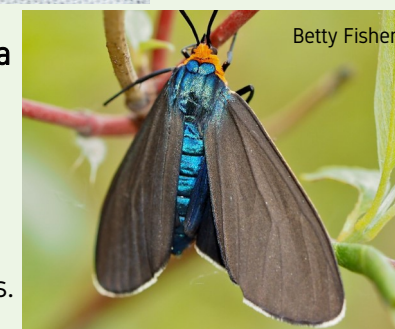


Colleen Raymond

Purple-backed Cabbageworm

Evergestis pallidata
Wing Span: 19-29 mm
Host plant: Mustards like bittercress, cabbage, and horseradish.

Virginia Ctenucha
Ctenucha virginica
Wing Span: 40-50 mm
Habitat: Open, grassy habitats in aspen parkland and boreal regions.



Betty Fisher



Betty Fisher

Clover Looper

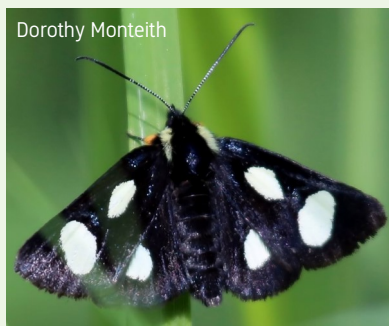
Caenurgina crassiuscula
Wing Span: 30-40 mm
Habitat: Open grassy meadows, pastures, road sides.

Parthenice Tiger
Grammia parthenice
Wing Span: 35-55 mm
Habitat: Open grassy areas throughout parkland and mixed boreal forest.



Andrea Jackson

Dorothy Monteith

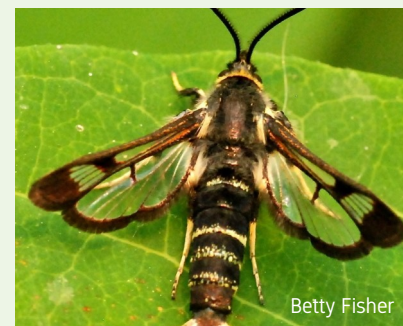


Eight-spotted Forester
Alypia octomaculata
Wing Span: 30-37 mm
Host plant: Climbing shrubs.

Lesser Wainscot
Mythimna oxygala
Forewing Length: 13-17 mm
Habitat: Fields, meadows, open grassy areas.



Colleen Raymond



Betty Fisher

Fireweed Clearwing
Albuna pyramidalis
Forewing Length: 8-14 mm
Habitat: Adults are attracted to flowers.



Betty Fisher

Friendly Probele
Probole amicarica
Wing Span: 23-35 mm
Habitat: Moist deciduous and mixedwood forests.

Celery Looper
Anagrapha falcifera
Wing Span: 32-34 mm
Habitat: Open areas like bogs, meadows, and gardens.



Betty Fisher



Colleen Raymond

Black-rimmed Prominent
Pheosia rimosa
Wing Span: 43-62 mm
Habitat: Deciduous and mixedwood forest.

Hummingbird Clearwing
Hemaris thysbe
Wing Span: 45-62 mm
Habitat: Open areas with shrubs, young trees, gardens.



Betty Fisher

White Eulithis
Eulithis explanata
Wing Span: 28-35 mm
Habitat: Bogs and shrubby areas.

Colleen Raymond



Betty Fisher



Pink-banded Sallow
Xanthia tatago
Wing Span: 30-34 mm
Habitat: Moist areas where willow species grow.

Common Gluphisia
Gluphisia septentrionis
Wing Span: 25-33 mm
Habitat: Poplar forest and mixedwood.

Andrea Jackson



Doris May

One-eyed Sphinx
Smerinthus cerisyi
Wing Span: 62-90 mm
Habitat: River margins, moist woods, and wetlands.



Gary Anweiler

Pale Beauty
Campaea perlata
Wing Span: 28-51 mm
Habitat: Widespread in forested areas.

Green Arches
Anaplectoides prasina
Wing Span: 45-60 mm
Habitat: Wooded areas.

Andrea Jackson



Colleen Raymond



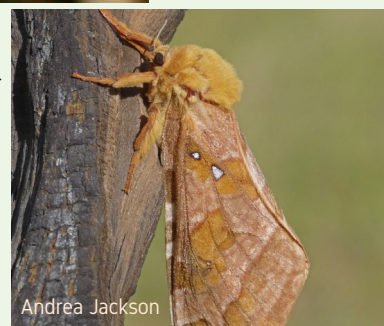
Maple Webworm Moth
Pococera asperatella
Wing span: 16-25 mm
Host plant: Maple.

Omnivorous Leafroller
Archips purpurana
Wing Span: 18-27 mm
Habitat: Open or shrubby areas.



Colleen Raymond

Four-spotted Ghost
Sthenopis purpurascens
Wing Span: 94-105 mm
Habitat: Mature mixedwood and poplar forest, near wetlands.



Andrea Jackson

Andrea Jackson



Catocaline Dart
Cryptocala acadimensis
Wing Span: 25-30 mm
Host plant: Arrowhead, dock, dogbane, elderberry, and others.

Polyphemus Moth
Antheraea polyphemus
Wing Span: 100-150 mm
Habitat: Deciduous forest, and river valleys.



Steph Weizenbach



Colleen Raymond

Three-lined Leafroller
Pandemis limitata
Forewing Length: 7-12 mm
Habitat: Deciduous trees and shrubs.