

THE COASTAL MARINE MOLLUSC FAUNA OF KING ISLAND, TASMANIA

by Simon Grove and Robert de Little

(with one text-figure, one plate, one table and an appendix)

Grove, S & de Little, R. 2014 (19:xii): The coastal marine mollusc fauna of King Island, Tasmania. *Papers and Proceedings of the Royal Society of Tasmania* 148: 17–42. <https://doi.org/10.26749/rstpp.148.17> ISSN 0080-4703. Rosny Collections and Research Facility, Tasmanian Museum and Art Gallery, GPO Box 1164, Hobart Tasmania 7001 (SG*); PO Box 683, Port Arthur Tasmania 7182 (RdL). *Author for correspondence. Email: simon.grove@tmag.tas.gov.au

The findings of a week-long survey of coastal marine molluscs around King Island are documented. In total, 408 species were recorded, 78 for the first time. King Island appears to be the only Tasmanian outpost for 44 species. Only two non-native species were found. A number of usually distinct species-pairs or groups appear to form intergrades around King Island. Along the island's east coast, beached shells belonging to Quaternary-era sub-fossils were found, not all of which are represented in the contemporary local fauna. Following critical examination of published sources and museum specimens, a checklist of King Island's coastal marine mollusc fauna is presented, comprising 619 species. It is likely that many more local species await discovery and documentation.

Key Words: Mollusca, King Island, Tasmania

INTRODUCTION

King Island sits in western Bass Strait at around 40°S and 144°E, and is a geographical outlier relative to the rest of Tasmania: it includes the westernmost shorelines in Tasmania, as well as some of the northernmost. Different parts of Tasmania host unique complements of coastal marine species, in part because of differing levels of influence of the various ocean currents that affect Tasmanian coastal waters, such as the Zeehan Current to the west and the East Australian Current to the east (e.g., Coleman *et al.* 2013). Indeed, Tasmania sits in a zone of overlap between three broad marine biogeographic provinces (Bennett & Pope 1960, Waters *et al.* 2010). These are known as the Flindersian (Perth to Port Phillip Bay), the Peronian (Port Phillip Bay to northern New South Wales, plus eastern Tasmania) and the Maugean (Tasmania, plus the coast of Victoria and eastern South Australia).

Because of its geographical position, King Island can be expected to host an unusual coastal marine mollusc fauna, showing more affinities with the Flindersian fauna than is typical for the rest of Tasmania. However, despite the past efforts of a number of recorders and collectors, the knowledge-base regarding King Island's coastal marine molluscs remains fragmentary. We sought to remedy this, through two approaches. First, we conducted a week-long collecting trip of our own, with the aim of compiling species lists for as many localities as feasible. Second, we undertook a critical examination of local museum and other specimens together with published and unpublished sources of information on the island's coastal marine molluscs. This paper brings together what we now know about the King Island fauna and places it in the context of that of the rest of Tasmania. These findings are then combined into an updated checklist (appendix 1).

METHODS

Field surveys and follow-up identification

Twenty-one discrete localities were surveyed during 13–19 March 2013, covering points around much of the island's coastline (table 1, fig. 1). Choice of localities was determined primarily by feasibility of access (by car and on foot), although in prioritising we also took into consideration the recommendations of local people and the origins of previous records. At each locality, we compiled as complete a collection of species as possible over the space of one to a few hours of searching, focusing primarily on beached shells but also incorporating records of any living molluscs found, e.g., on or under rocks or amongst seaweed. Although our collecting efforts were biased towards the larger species, we collected small samples (up to about 300 cm³) of shell-grit from each locality at which we found sufficient accumulations. We only moved on to a new locality once we felt we had exhausted a given locality. We identified and recorded most of the larger specimens *in situ* or back at base, and compiled our records into a database while still on the island, allowing us to discard all but the most valuable specimens. Specimens that were harder to identify, including all micromolluscs, were brought back to Hobart and identified later. Sources of identification included the extensive collections at the Tasmanian Museum and Art Gallery (TMAG), web-sites (Beechey 2014, Grove 2014), unpublished compilations on southeast Australian marine gastropods (A. Monger, pers. comm.) and relevant publications such as Grove (2010), Huber (2010), Lamprell & Healy (1998), Lamprell & Whitehead (1992) and May & MacPherson (1958). Images of specimens that proved intractable were sent to other experts for identification or validation.

Retained shells currently reside with the authors but will ultimately be deposited in the Tasmanian Museum and Art Gallery collection; records will be sent to the online *Atlas of Living Australia*.

TABLE 1 — The localities surveyed during March 2013 visit to King Island

1. *Ettrick Beach 39.9922°S x 143.8876°E (13 March). A small beach on the exposed W coast. Rocky islets give a variety of aspects and exposures. Much bull-kelp debris strewn over boulders and pebbles. A small creek outflow gives rise to some areas of fine sediment.	12. Yellow Rock Beach, King Island 39.6280°S x 143.9324°E (16 March). Gently sloping sandy beach on NW coast, backed by dunes. Occasional rocky outcrops and a creek outflow.
2. Sandblow Bay, Grassy Harbour 40.0689°S x 144.0482°E (14 March). A steeply shelving beach of coarse sand on the SE coast, S of Grassy Harbour.	13. Naracoopa foreshore 39.9166°S x 144.1179°E (17 March). Rocky reefs interspersed with coarse sand and pebble beaches; backed by cliffs at N end.
3. Grassy Harbour 40.0624°S x 144.0630°E (14 March). A series of sheltered, N-facing pebble coves immediately to the N of this SE-coast harbour.	14. Blowhole, Sea Elephant Bay 39.8574°S x 144.1113°E (17 March). Accessible section of an extensive E-coast sandy beach, backed by wind-blown sand-flats and dunes.
4. City of Melbourne Bay 40.0086°S x 144.0020°E (14 March). A series of moderately exposed, E-facing beaches between low rocky outcrops. Much kelp debris over boulders and pebbles, and with areas of sand.	15. Cowper Point, Sea Elephant Bay 39.8223°S x 144.1273°E (17 March). Accessible section of an extensive E-coast sandy beach backed by wind-blown sand-flats and dunes. Small rocky reef embedded in sand.
5. *Currie foreshore 39.9489°S x 143.8601°E (14 March). Exposed W-coast rocky coastline but with more sheltered pebble coves, S of the harbour.	16. Lavinia Beach near Lake Martha Lavinia 39.6503°S x 144.0782°E (18 March). Accessible section of an extensive E-coast sandy beach, backed by wind-blown sand-flats and dunes.
6. *Fitzmaurice Bay 40.0618°S x 143.8816°E (15 March). Exposed W-coast rocky coastline but with rocky islets providing some shelter for pebble and sand coves, 1-3 km N of Fitzmaurice Beach.	17. Porky Beach 39.8479°S x 143.8602°E (18 March). Small sandy beach sheltered by rocky islands on otherwise exposed W-coast rocky shoreline. Much bull-kelp debris. Backed by low dunes.
7. Surprise Bay 40.1286°S x 143.9080°E (15 March). Gently sloping sandy beach with rocky outcrops and pebble-banks on exposed SW coast, afforded some shelter by adjacent headlands.	18. *Little Porky Beach 39.8549°S x 143.8602°E (18 March). Small sandy beach sheltered by rocky islands on otherwise exposed W-coast rocky shoreline. Much bull-kelp debris. Backed by low dunes.
8. Gulchway, Stokes Point 40.1435°S x 143.9157°E (15 March). Series of steep, boulder and pebble beaches on exposed SW coast.	19. Red Hut Point 40.0991°S x 144.0005°E (19 March). Rocky headland and adjacent pebbly and sandy coves, on S coast.
9. Black Point, Seal Bay 40.1125°S x 143.9676°E (15 and 19 March). Rocky headland and adjacent pebbly and sandy coves, on S coast.	20. *Colliers Beach 40.0985°S x 144.0005°E (19 March). Steeply sloping sandy beach between rocky headlands, on S coast.
10. Cape Wickham (foreshore to E) 39.5870°S x 143.9623°E (16 March). Exposed N-coast rocky coastline, with series of boulder and pebble beaches, 1-3 km E of Cape Wickham.	21. *Seal Point 40.1107°S x 143.9779°E (19 March). Rocky headland and adjacent pebbly and sandy coves, on S coast.
11. Disappointment Bay 39.6006°S x 143.9843°E (16 March). Gently sloping sandy beach between rocky headlands on exposed N coast, backed by low dunes.	

Numbers correspond to those mapped on fig. 1.

* Localities from which shell-grit samples were collected.

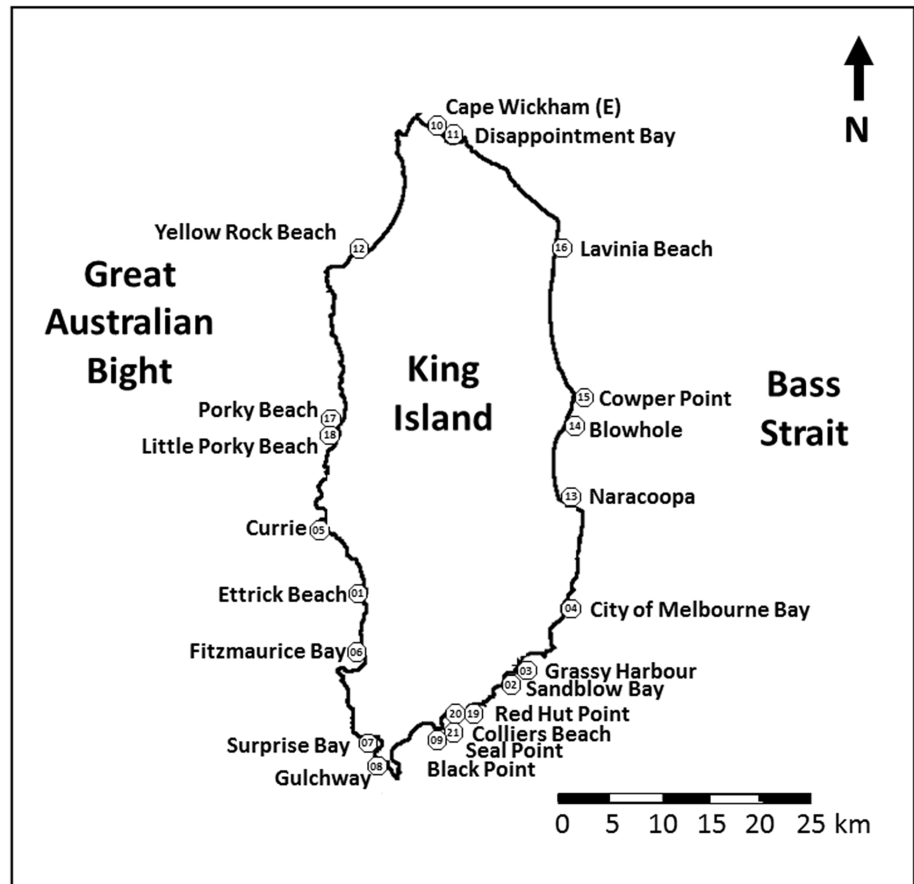
Checklist compilation

We consulted five main published sources of information on King Island's coastal marine molluscs. Mulder (1902) lists (without specific locality information) species that he identified "from material brought from King's Island". May (1924) lists (mostly without specific locality information) the species that he collected on a visit to King Island (Grassy, Fraser – Sea Elephant Bay, Surprise Bay and Currie Harbour) in November 1922. Gabriel (1956) lists the species identified from adhering debris retrieved from a broken cable near Elephant Shoal Reef, four miles southeast of King Island in seven and a half fathoms of water. May & Macpherson (1958) illustrate a number of these species from Gabriel's and May's earlier King Island material, as well as some other species specifically noted as having been found around the island. A report on a field-trip to King Island in 1980 by the Marine Research Group (at the time affiliated to Museum Victoria) lists the live mollusc species encountered by locality;

it is particularly informative in terms of the chitons and nudibranchs. The majority of species in these sources have since undergone name-changes as a result of taxonomic or nomenclatural revisions. We have not referred to these old names in our checklist; instead we have done our best to translate them into those in current usage.

Additionally, we extracted King Island records from the collections databases of the TMAG and the Queen Victoria Museum and Art Gallery. The TMAG records included some – but not all – of the King Island material cited and/or illustrated in May (1924) and May & MacPherson (1958); some of the shells collected during short visits to King Island by Devonport shell enthusiast Margaret Richmond in 1987 and by former TMAG curator Elizabeth Turner in 1990; and other assorted material from various collectors and donors. Margaret Richmond's personal collection records were also consulted by SG; her full collection is now at TMAG, and is in the process of being incorporated into the main collections. *The Atlas of Living Australia* (2014)

FIG. 1 — King Island, showing collecting localities from March 2013 visit. Numbers correspond to those used in table 1.



was consulted as a source of selected collection records only – primarily of species not otherwise documented from King Island and originating either from Museum Victoria or from the Australian Museum.

On King Island, we visited the King Island Museum in Currie, where much of the shell collection of the late Max McGarvie is displayed (further McGarvie material is held at TMAG). We were able to compare what was on display with a species-list given to SG by volunteer curator Margaret Batey, and to amend some of the identifications accordingly. Back in Hobart, SG viewed the King Island shell collection of Annabel and Peter Larkey, and incorporated records of species of particular interest. SG was also sent photos of shells collected on King Island during the 1970s by Jeannette Dennison, and later viewed some of the shells that she had collected then at Naracoopa. SG also received records of cowries collected on King Island since the 1990s by Hobart landsnail expert Dr Kevin Bonham.

All records from the above sources that were considered valid (as opposed to those arising through misidentifications, locality mix-ups or lack of taxonomic discrimination) were entered into a database maintained by SG, which was then queried in the process of producing the final checklist.

RESULTS

King Island's known coastal marine mollusc fauna, prior to our visit

We recognised valid pre-visit records for 541 species. These include 35 species for which we have no further Tasmanian records. Some of these may genuinely be restricted to King Island within the Tasmanian part of their range; others (particularly the chiton and nudibranchs) may simply be under-recorded elsewhere. The two chief sources of such records are Gabriel (1956) (14 species, all from Elephant Shoal Reef), and the Marine Research Group (1980) (14 species, primarily nudibranchs, various localities). These can be recognised in appendix 1 by the absence of other records for the species concerned. In taxonomic order, they are as follows: chitons – *Notoplax rubostriata*; bivalves – *Nuculana dohrni*, *Limopsis tenisoni*, *Limea austrina*, *Dacrydium radians*, *Salaputium micrum*, *Purpurocardia purpurata*; gastropods – *Macroschisma productum*, *Pterotrachea kingicola*, *Pisinnia nitida*, *Socienna angasi*, *Paracuneus immaculatus*, *Mitromorpha bassiana*, *Mitromorpha macphersonae*, *Asperdaphne bastowi*, *Asperdaphne perplexa*, *Nepotilla lamellosa*, *Terebra albida*, *Aesopus gatliffi*, *Gibberula agapeta*, *Curveulima commensalis*, *Syrnola angasi*, *Melanochlamys queritor*, *Doto ostenta*, *Caldukia affinis*, *Rostanga crawfordi*, *Sclerodoris tarka*, *Doriopsilla miniata*, *Aphelodoris rossquicki*, *Neodoris chrysoderma*, *Onchidoris maugeansis*, *Paliolla cooki*, *Midorigai australis*, *Tamanovalva babai* and *Ascobulla fischeri*.

King Island's coastal marine mollusc fauna, based on our visit

We recorded 408 species of coastal marine mollusc. While most of our recorded species had been previously recorded from King Island, 78 comprise the first records of which we are aware. Our survey therefore brings the list up to 619 species. We present these in a taxonomically ordered checklist (appendix 1), in which our additions can be recognised by the absence of other records for the species concerned. Additionally, we found several micromollusc specimens that await formal identification, some of which do not match any described species. We make no further reference to these here.

Nine of our newly recorded species (pl. 1) join the 35 species mentioned earlier for which King Island appears to be their only Tasmanian outpost. All but one of our additions (the small topshell *Herpetopoma fenestratum*) are micromolluscs. One, a rice-shell, appears to be new to science: we refer to it here as *Merelina* sp. nov. A further undescribed rice-shell species, *Pisinna* sp. nov., is also known from Victorian waters and is awaiting description (L. Stephens, pers. comm.). Of the others, *H. fenestratum* and the wormshell *Stephopoma* cf. *nucleogranosum* are primarily “western” species otherwise found no closer to Tasmania than the coast of South Australia; while the caecid *Caecum amputatum*, the false-creeper *Specula regina*, the orbitestellids *Orbitestella bastowi* and *O.* cf. *decorata* and the pyramid-shell *Miralda montuosa* are all previously known from Victorian waters, and some are also known from adjacent mainland states.

Only two of our species are non-native – the screwshell *Maoricolpus roseus* and the oyster *Crassostrea gigas*; and our checklist contains no others, with the possible exception of *Mytilus galloprovincialis*, whose taxonomic and native status remains uncertain (Colgan & Middelfart 2011).

Species that we have removed from the King Island checklist

We identified past King Island records of 40 species that we feel do not belong on the list – and in some cases do not even belong on the Tasmanian list. We have determined that some of these represent suspected or confirmed past misidentifications, others locality mix-ups, and others a lack of taxonomic discrimination in the light of more recent species-splitting.

From Mulder (1902) we recognised many species as misidentifications on the basis of being well outside of their normal range; we were usually able to reassign these to local species. These include the butterfly-shell *Pteria physoides* (reassigned to *Electroma papilionacea*); the lucine clam *Myrtea fabula* (reassigned to *M. botanica*); the limpet *Patelloida saccharina* (to *P. alticostata*); the rice-shell *Rissoina spirata* (to *R. fasciata*); and the wentletrap *Epitonium aculeatum* (to *E. minorum*). Mulder also claimed the North Atlantic bonnet-limpet *Hipponix antiquatus* (which we have reassigned to *Antisabia foliacea*). He recorded two Western Australian species: the limpet *Notoacmea conoidea* (reassigned to *N. corrodenda*); and the air-breather *Marinula*

patula (to *M. xanthostoma*). Two of Mulder's records refer to species which occur in the region but which we have nevertheless reassigned to species more plausible for King Island: the lucine clam *Epicodakia consettiana* (to *E. tatei*, on the basis that the TMAG specimens from King Island also identified as *E. consettiana* proved on re-examination to be *E. tatei*); and the rice-shell *Merelina cheilostoma*, a species which has since been split, with “real” *M. cheilostoma* only likely to occur further east (reassigned to the newly described species, *M. cancellata*).

From May (1924) we reassigned the following records: the arc-shell *Destacar metella*, a species of NSW and eastern Victoria (assumed to be a juvenile *Barbatia pistachia*); *Lasaea miliaris*, a species of the western Atlantic and Antarctica (to *L. australis*); the topshell *Clanculus maugeri*, a species found in NSW and eastern Victoria (omitted, since May & MacPherson (1953) noted that the record “needs confirmation”); and the rice-shell *Merelina cheilostoma* (as above, reassigned to the newly described species, *M. cancellata*).

From Gabriel's (1956) list of the species identified from near Elephant Shoal Reef, we reassigned several species. Three of these are sinistral-creepers, which we reassigned to local species on the recommendation of the taxonomic expert for this group (L. Stephens, pers. comm.): the “eastern” *Aclophoropsis maculosa* (reassigned to *A. festiva*) and *Hedleytriphora innotabilis* (to *H. fasciata*), and the “western” *H. scitula* (also to *H. fasciata*). Gabriel also recorded the bubble-shell *Retusa pygmaea* (reassigned to *R. pelyx*, on the recommendation of the taxonomic expert for this group (R. Burn, pers. comm.).

From the Marine Research Group's (1980) list of live-found species we reassigned the “eastern” topshell *Ethminolia probabilis* to the more “western” *E. vitiliginea*.

From the King Island Museum's collection of shells donated by the late Max McGarvie, we deduced that some putative King Island specimens had in all probability been collected in Western Australia. Thus we discounted the museum's records of the warmer-water dog-whelk *Nassarius glans particeps* and also those of the warm-water dove-shell *Euplica bidentata*, a species for which purportedly King Island specimens had also been lodged by McGarvie at TMAG. We reassigned several other misidentified shells in the museum, as follows: the oyster *Saccostrea glomerata* (reassigned to *Ostrea angasi*), the pen-shell *Pinna bicolor* (to *Atrina tasmanica*), the kelp-snail *Phasianotrochus bellulus* (to *P. eximius*), the moon-snail *Conuber sordidus* (to *C. conicus*) and the rock-whelk *Sassia parkinsoniana* (to *S. subdistorta*). We have since worked with volunteers at the museum to correct errors.

From the TMAG's collections, we reidentified and reassigned the following: the notch-limpet *Emarginula superba* (to *E. dilecta*); the slit-shell *Puncturella kesteveni* (to *P. harrissoni*); the rice-shell *Onoba agnewi* (to *Alvania fasciata*); the limpet-like shell *Phenacolepas calva* (to *Asteracmea stowae*); the urchin-snail *Eulima lodderae* (to *Leiostraca kilcundae*); and the bubble-shell *Tornatina exserta* (to *T. apicina*). The specimen behind a TMAG record of the keyhole-limpet *Amblychilepas crucis* could not be located;

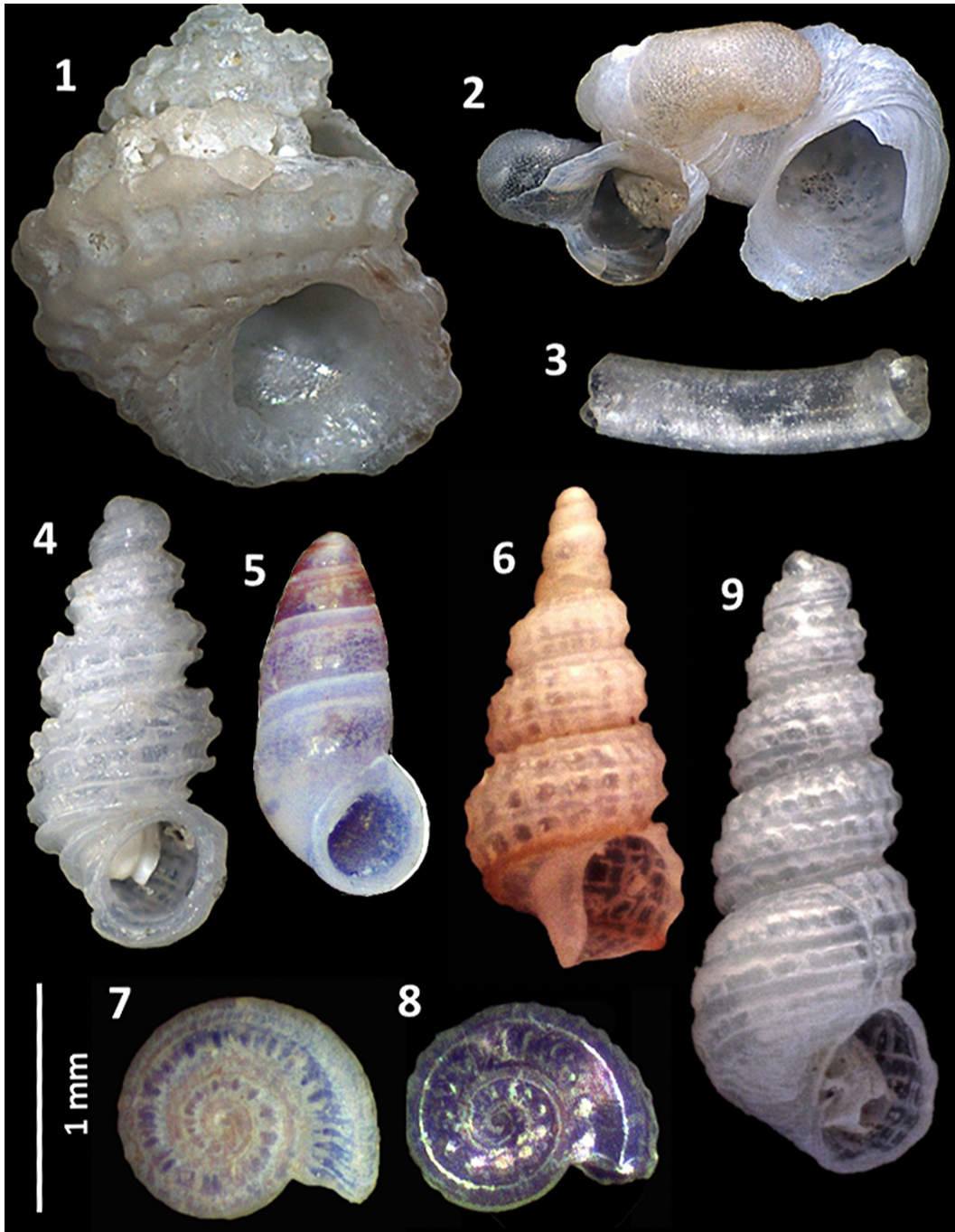


PLATE 1 — Specimens from March 2013 visit representing the nine coastal marine mollusc species considered new for Tasmania. 1: *Herpetopoma fenestratum*; 2: *Stephopoma* cf. *nucleoگرانوسوم*; 3: *Caecum amputatum*; 4: *Merelina* sp. nov.; 5: *Pisinna* sp. nov.; 6: *Specula regina*; 7: *Orbitestella bastowi*; 8: *Orbitestella* cf. *decorata*; 9: *Miralda montuosa*.

since *A. crucis* is currently considered to refer merely to juveniles of other *Amblychilepas* species, we provisionally reassigned the record to *A. nigrita*. Other species for which the TMAG specimens could not be located, and which we therefore considered to be dubious records for King Island given their normal range, were the top-shell *Danilia telebathia*, the false top-shell *Cirsonella carinata*, and the screw-shell *Colpospira atkinsoni*. The TMAG holds the holotype of *Turbo cucullata* Tenison Woods, 1878, based on a specimen collected by William Legrand, purportedly from “King’s Island, Bass Strait”. On examining the holotype, SG

reassigned the specimen to *Turbo (Marmarostoma) bruneus*, whose normal range is the tropical Indo-Pacific. We have omitted it from our checklist on the assumption that the specimen concerned was mislocalised.

From *The Atlas of Living Australia* (2014) we excluded the warmer-water moon-snail *Conuber incei* (which we also found during our survey, but only as a sub-fossil); we reassigned the warmer-water moon-snail *Tanea euzona* to the cooler-water *T. sagittata*, and reassigned the eastern thickshell clam *Talabrica fulvida* to the more western *T. aurora*.

Doubtful species that remain on the King Island checklist

We found records of several further species whose presence around King Island remains in doubt, although we did not feel justified in removing them from our checklist. There are several species illustrated in May & Macpherson (1958) that are accompanied by text implying that the species had been found around King Island, despite their apparent absence from the rest of Tasmania. For four of these – the lucine clam *Callucina lacteola*, the topshell *Astele rubiginosa*, the doveshell *Aesopus plurisulcatus* and the auger shell *Terebra albida* – we have not been able to trace extant King Island specimens and can neither confirm nor refute their King Island status: all seem at least feasible. In a similar vein, there is a TMAG record of the widespread sheltered-water wedge-shell *Atactodea cuneata*; however, the specimen could not be located. TMAG also holds the specimens behind the only King Island records of two species of margin-shell. The specimen recorded as *Dentimargo dentiens* is referable to a broken specimen, which is not identifiable to species: it could be this species (since it is within range), or it could equally be the similar *Serrata mustelina*, which we found at several localities during our survey. Those specimens recorded as *Ovaginella ovum* were redetermined by SG as *O. pisum*. However, *Ovaginella ovum* was also claimed for King Island by Mulder (1902), a record which can be neither validated nor dismissed. The presence of three species of *Phasianotrochus* kelp-snail around King Island also remains in doubt. The Marine Research Group (1980) recorded *P. apicinus*, but we suspect a misidentification, perhaps of *P. irisodontes* or *P. eximius*. A record of *P. bellulus* from the Queen Victoria Museum and Art Gallery may refer to *P. eximius*, as was the case with the putative specimen of this species in the King Island Museum that we examined. However, the occurrence of both these additional *Phasianotrochus* species around King Island remains a possibility. Margaret Richmond claimed *P. rutilus* from Naracoopa. We did not find any shells on King Island fitting the supposed characters of *P. rutilus*; however, the species is within range and we have retained the record. The Marine Research Group (1980) and Mulder (1902) both claimed the limpet *Cellana tramoserica*. This species seems to be very rare in Tasmania, and the few other Tasmanian records are all referable to the far northeast of the state. However, *C. tramoserica* is common along the Bass Strait coast of Victoria, so its occurrence around King Island remains a possibility despite not being noted during our survey. There are many apparent records of the doveshell *Pyreneola lurida* from around Tasmania, including King Island, but these may refer to some other, perhaps undescribed, species since *P. lurida* otherwise is thought to occur no closer than about Sydney. Finally, Gabriel (1956) claimed the slit-shell *Anatoma australis* from Elephant Shoal Reef; this record could equally refer to the more recently described *A. tobeyoides*.

DISCUSSION

While our survey total of 408 species of coastal marine mollusc represents a substantial number, we recognise that serendipity played a big part in our finds: our survey is far from complete for a southern temperate coastline replete with nearshore reefs interspersed with sandy and gravelly seabeds that would be expected to provide habitat for a wide range of coastal marine molluscs. Several factors militated against more comprehensive coverage. First, no single week of survey effort could be otherwise, relative to the magnitude of the task at hand. Second, our own expertise did not permit a fuller survey of non-shelled molluscs. Third, not all parts of the coast were accessible to us. But beyond this, we found that intense wave-action and the high tidal range around King Island militated against the accumulation of intact beached shells or shell-grit except in a few favoured spots – though broken shells and shell fragments were much more widespread. Most of King Island's shorelines are exposed – its west coast in particular bears the full brunt of the Roaring Forties – and most beaches are steeply shelving, offering relatively little living-space for intertidal molluscs. Rocky shores were found to largely lack large intertidal macroalgae, which are normally rich habitat for molluscs, though bull kelp and other species were abundant in the sublittoral, and the strandline was often strewn with rotting kelp. There was a near-absence of in-shore seagrass beds and sheltered, estuarine environments – both key habitats for molluscs.

In total, 78 of the species that we recorded in our week-long survey comprise the first King Island records that we are aware of; nine of our newly recorded species join 35 others for which King Island appears to be their only Tasmanian outpost; two appear to be undescribed. The bivalve *Gomphinella undulosa* and the keyhole-limpet *Amblychilepas oblonga* are effectively confined to King Island in the Tasmanian part of their range, although we found them to be locally common around the island. Other species that were notable for being relatively common around King Island in comparison to elsewhere around Tasmania include the bivalves *Tucetona flabellata*, *Gari kenyoniana* and *Dosinia crocea*, and the gastropods *Phasianella ventricosa*, *Cabestana tabulata* and *Haustrum baileyannum*. Conversely, we were surprised not to find a number of species that are common elsewhere in Tasmania, and to find that others were relatively rare. For instance, our survey produced the first records of snakeskin chiton *Sypharochiton pelliserpentis*, a species which is abundant on rocky shores elsewhere in Tasmania. The mussels *Xenostrobus pulex* and *Austromytilus rostratus* – often dominant species on Tasmanian rocky shores – were almost absent, and we failed to find any specimens of blue mussel *Mytilus galloprovincialis*, although there is a single previous record of this species (whose native status is open to question, as mentioned above) from Grassy Harbour. Other species that were unusually scarce include the bivalves *Glycymeris striatularis*, *Dosinia caerulea* and *Gari livida* and the gastropods *Phasianella australis*, *Amblychilepas javanicensis*, *Phasianotrochus irisodontes*, *Conuber conicus*, *Cabestana spengleri* and *Agnewia tritoniformis*. We also failed to find any specimens of the

normally common topshell *Austrocochlea porcata*, although SG has been shown a photograph of a single shell of this species from Naracoopa. Writing of his shell-collecting visit to King Island, May (1924) similarly remarked that “the most remarkable feature was the absence of many common Tasmanian shells, particularly the larger bivalves”.

We remain unable to account for most of these faunal differences between King Island and the rest of Tasmania, other than to invoke a general role for water-temperature, exposure and prevailing currents. However, two of our additions (the topshell *H. fenestratum* and the wormshell *Stephopoma* cf. *nucleoگرانوسوم*) are primarily “western” species otherwise found no closer than the coast of South Australia. Their presence probably reflects the strong influence around King Island of the southwards-flowing Zeehan Current (Cresswell 2000) which has its origins in the warmwater Leeuwin Current of Western Australia via a series of eddies that cross the Great Australian Bight (Ridgway & Condie 2004). Most other additions, and most of the other species for which King Island is their only Tasmanian outpost, are also known from Victoria as well as adjacent mainland states. Presumably, conditions around King Island remain sufficiently favourable year-round (in terms of water temperatures) for these more northern species, whereas conditions elsewhere in Tasmania do not. The same probably applies to the several species that we found to be common around King Island relative to their status elsewhere in Tasmania.

All but one of those species new to Tasmania are microscopic species identified from samples of shell-grit, and thus readily overlooked. However, over half of those new to King Island were larger than this, and hence potentially recordable by a wider range of beach visitors. That we were able to add so many species to the list is therefore an indication both of the gappiness in the knowledge-base concerning Tasmania’s marine mollusc fauna, and of the rapid rate at which that knowledge-base is now improving, particularly with respect to micromolluscs and offshore species (e.g., de Little & Grove 2013, Stephens & Vafiadis 2013). This survey provides further impetus for updating the checklist of Grove *et al.* (2006), a task that is now in progress.

Only two (or, at most, three) of our finds represent non-native species, and the checklist contains no others. For one of these, *Mytilus galloprovincialis*, its taxonomic and native status remains uncertain locally, because some Australian populations bear the genetic signature of both native and European ancestry (Colgan & Middelfart 2011). Overall, three species represents a small proportion of the feral species pool in Tasmanian waters, which comprises at least ten shelled species and four nudibranchs (Grove 2014). This situation no doubt reflects King Island’s remoteness from the original sources of introduction, which are mostly in the vicinity of Hobart, Launceston and Devonport, or across Bass Strait in Port Philip Bay (e.g., Whitehead 2008). The apparent scarcity of even these two feral species around King Island – and, for *Maoricolpus roseus*, the fact that ours were the first documented records – may suggest that they are recent arrivals, in which case we might expect their

populations to follow similar trajectories of increase as has occurred elsewhere in Tasmania, where living animals and dead shells of feral species can at times dominate the sea-floor and vastly outnumber their native congeners (Probst & Crawford 2008, Whitehead 2008).

A number of species-pairs or groups whose individual species are quite well defined elsewhere in Tasmania appear to form intergrades or hybrid swarms around King Island. For instance, we noted apparent intergrades among the cowries *Notocypraea comptoni*, *N. declivis* and *N. piperita*, and between the keyhole-limpets *Amblychilepas nigrita* and *A. oblonga* (the latter species does not occur elsewhere in Tasmania). We also observed apparent intergrades between the nutmeg-shells *Cancellaria lactea* and *C. spirata*, and between *C. granosa* and *C. undulata*. Interestingly, we did not notice any apparent intergrades between *C. lactea* and *C. granosa*, though these can be found in eastern Tasmania. These putative intergrades may reflect a process of incomplete speciation having its origins in the various climatic upheavals of the Pleistocene. Fluctuating temperature regimes and sea-levels during this era would have alternately separated and then reunited sibling populations to the east and west of what is currently Bass Strait but which has in the past formed the so-called Bassian Isthmus connecting Tasmania to mainland Australia (Ayre *et al.* 2008, Colgan & Costa 2013, Li *et al.* 2013, Waters 2008, Waters *et al.* 2010). The most recent isthmus is thought to have bridged eastern Bass Strait. Nevertheless, King Island may sit more firmly than other parts of Tasmania in a zone of re-contact between incompletely segregated sibling taxa to the east and west. However, testing this conjecture would require extensive molecular sampling of live-caught material from throughout the species’ ranges.

The Pleistocene upheavals have also left their biological signature in the sediments that have accumulated on King Island’s land-surface and nearshore marine environments (D’Costa *et al.* 2006). Along the east coast, particularly at Naracoopa, we identified beached shells that appear to be Quaternary-era sub-fossils, not all of which are referable to species represented in the contemporary local fauna. For instance, the moon-snail *Conuber incei* is considered a warmer-water species that is not currently found south of Victoria; the cowrie *Umbilia hesitata* and the rock-whelk *Sassia epitrema*, are today confined in Bass Strait to much deeper waters; and the kelp-snail *Bankivia fasciata* and the nutmeg-shell *Cancellaria purpuriformis* still occur locally but apparently very rarely, though they are not uncommon elsewhere in Tasmanian nearshore waters. Together, these records are noteworthy in that they demonstrate the changing nature of the local fauna; they are also a reminder that not all shells on a beach are necessarily derived from locally extant populations.

CONCLUSION

Taken together, our survey, recording and compilation efforts demonstrate that King Island supports a rich and unusual coastal marine mollusc fauna in a Tasmanian context. Despite

our best efforts at identifying specimens and validating previous records, it is likely that some of the species on our checklist represent misidentifications; while it is equally likely that additional species should rightly appear on the list. Continued developments in taxonomy, systematics and nomenclature are further reasons why this checklist will one day be considered obsolete. In the meantime, it provides a firm base on which future researchers and enthusiasts can build.

ACKNOWLEDGEMENTS

We thank Cathy Byrne at TMAG for supporting and facilitating SG's visit to King Island. SG's eagle-eyed son Ben also participated in the visit, and found specimens of several of the species of note. Sincere thanks also to Lynton Stephens (Melbourne) and Bob Burn (Geelong) for help with identification and validation of tricky specimens, particularly micromolluscs. We also thank Bob Burn, the journal editor and two anonymous referees for their thoughtful comments on previous versions of this paper. Margaret Batey (Currie) kindly provided access to the shell collection of the late Max McGarvie, now held at the King Island Museum; Bob Burn and Alan Monger (Benalla, Vic) provided us with copies of the report on the findings from the 1980 King Island visit by the Marine Research Group; Alan Monger also furnished us with copies of his unpublished compilations on southeast Australian gastropods; Annabel and Peter Larkey (Hobart) kindly allowed SG access to their personal collection of King Island shells; Margaret Richmond (Devonport, recently deceased) provided SG with her Tasmanian mollusc locality records; Jeannette Dennison (Currie and Hobart) sent SG photographs of her King Island shell collection, and brought in specimens to TMAG for validation; and Craig Reid and the late Brian Smith provided SG with a spreadsheet of the mollusc records from the Queen Victoria Museum and Art Gallery.

REFERENCES

- Atlas of Living Australia** 2014: The Atlas of Living Australia, www.ala.org.au (accessed 1 July 2014).
- Ayre, D.J., Minchinton, T.E. & Perrin, C.** 2008: Does life history predict past and current connectivity for rocky intertidal invertebrates across a marine biogeographic barrier? *Molecular Ecology* **18**: 1887–1903.
- Beechey, D.** 2014: *The Seashells of New South Wales*, seashellsofnsw.org.au (accessed 1 July 2014).
- Bennett, I. & Pope, E.C.** 1960: Intertidal zonation of the exposed rocky shores of Tasmania and its relationship with the rest of Australia. *Australian Journal of Marine and Freshwater Research* **11**: 182–221.
- Colgan, D.J. & Costa, P.** 2012: Possible drivers of biodiversity generation in the *Siphonaria* of southeastern Australia. *Marine Biodiversity*, published online: DOI: 10.1007/s12526-012-0127-2.
- Colgan, D.J. & Middelfart, P.** 2011: *Mytilus* mitochondrial DNA haplotypes in southeastern Australia. *Aquatic Biology* **12**: 47–53.
- Coleman, M.A., Feng, M., Roughan, M., Cetina-Heredia, P. & Connell, S.D.** 2013: Temperate shelf water dispersal by Australian boundary currents: Implications for population connectivity. *Limnology and Oceanography Fluids and Environments* **3**: 295–309.
- Cresswell, G.** 2000: Currents of the continental shelf and upper slope of Tasmania. *Papers and Proceedings of the Royal Society of Tasmania* **133**: 21–30.
- D'Costa, D.M., Grindrod, J. & Ogden, R.** 2006: Preliminary environmental reconstructions from late Quaternary pollen and mollusc assemblages at Egg Lagoon, King Island, Bass Strait. *Austral Ecology* **18**: 351–366.
- de Little, R. & Grove, S.J.** 2013: Sinking to new depths in pursuit of Tasmanian marine molluscs. *Malacological Society of Australia, Victoria Branch Bulletin* **271**: 2–4.
- Edgar, G.J.** 2012: *Australian marine life: the plants and animals of temperate waters*. Second edition. New Holland, Sydney: 528 pp.
- Gabriel, C.J.** 1956: Mollusca from south east of King Island, Bass Strait. *Memoirs of the National Museum of Victoria* **22**: 1–16.
- Grove, S.J., Kershaw, R.C., Smith, B.J. & Turner, E.** 2006: A systematic list of the marine molluscs of Tasmania. Launceston: Queen Victoria Museum and Art Gallery: 120 pp.
- Grove, S.J.** 2010: *The seashells of Tasmania: a comprehensive guide*. Taroon Publications, Hobart: 81 pp.
- Grove, S.J.** 2014: *A guide to the seashells and other marine molluscs of Tasmania*, www.molluscsoftasmania.net (accessed 1 July 2014).
- Huber, M.** 2010: *Compendium of bivalves*. ConchBooks, Hackenheim: 911 pp.
- Lamprell, K. & Healy, J.** 1998: *Bivalves of Australia, volume 2*. Backhuys, Leiden: 288 pp.
- Lamprell, K. & Whitehead, T.** 1992: *Bivalves of Australia, volume 1*. Crawford House, Bathurst: 182 pp.
- Li, J., O'Foighil, D. & Park, J.-K.** 2013: Triton's trident: cryptic Neogene divergences in a marine clam (*Lasaea australis*) correspond to Australia's three temperate biogeographic provinces. *Molecular Ecology* **22**: 1933–1946.
- Marine Research Group** 1980: *Report on a field-trip to King Island*. Marine Research Group, Melbourne: unpublished report.
- May, W.L.** 1924: Mollusca of King Island, with descriptions of five new species. *Papers and Proceedings of the Royal Society of Tasmania*: **1923**, pages 47–55.
- May, W.L. & Macpherson, J.H.** 1958: *An illustrated index of Tasmanian shells*. Government Printer, Hobart: 72 pp.
- Mulder, J.F.** 1902: A list of shells collected from material brought from King's Island. *The Wombat* **3** (19): 35–38.
- Probst, T.A. & Crawford, C.M.** 2008: Population characteristics and planktonic larval stage of the New Zealand screwshell *Maoricolpus roseus*. *Journal of Molluscan Studies* **74**: 191–197.
- Ridgway, K.R. & Condie, S.A.** 2004: The 5500-km-long boundary flow off western and southern Australia. *Journal of Geophysical Research: Oceans* **109**: 2156–2202.
- Stephens, L. D. & Vafiadis, P.** 2013: New species and records of *Pelycidion* P. Fischer in de Folin & Périer, 1873 (Gastropoda: Pelycidiidae) from temperate Australia. *Molluscan Research* **33**: 254–264.
- Waters, J.M.** 2008: Marine biogeographical disjunction in temperate Australia: historical landbridge, contemporary currents, or both? *Diversity and Distributions* **14**: 692–700.
- Waters, J.M., Wernberg, T., Connell, S.D., Thomsen, M.S., Zuccarello, G.C., Kraft, G.T., Sanderson J.C., West, J.A. & Gurgel, C.F.D.** 2010: Australia's marine biogeography revisited: back to the future? *Austral Ecology* **35**: 988–992.
- Whitehead, J.** 2008: Derwent Estuary introduced marine and intertidal species: review of distribution, issues, recent actions and management options. Derwent Estuary Program, Hobart: 48 pp.

(accepted 4 November 2014)

APPENDIX 1

A systematic checklist of the coastal marine molluscs of King Island, annotated with record sources and localities.

Record localities and their geographic coordinates

Note: whereas the coordinates accompanying the locality names are provided at a standard level of precision, the level of accuracy of those coordinates varies depending on the source information.

Bass Strait NE of KI, scallop survey site 01 (39.5200°S × 144.0800°E); Bass Strait NE of KI, scallop survey site 02 (39.5200°S × 144.0800°E); Bass Strait NE of KI, scallop survey site 04 (39.5400°S × 144.1500°E); Bass Strait NE of KI, scallop survey site 05 (39.5300°S × 144.1800°E); Bass Strait NE of KI, scallop survey site 08 (39.4900°S × 144.1400°E); Bass Strait NE of KI, scallop survey site 11 (39.5600°S × 144.1900°E); Bass Strait NE of KI, scallop survey site 42 (39.4400°S × 144.4900°E); Black Point, Seal Bay (40.1125°S × 144.1273°E); Blowhole, Sea Elephant Bay (39.8574°S × 144.1113°E); Boulder Point (39.6254°S × 144.0520°E); British Admiral Beach (39.9549°S × 143.8661°E); Cape Wickham (foreshore to E) (39.5870°S × 143.9623°E); Cape Wickham (unlocalised) (39.6042°S × 143.9577°E); Cataragui Point (40.0627°S × 143.8586°E); City of Melbourne Bay (40.0086°S × 144.0020°E); Colliers Beach (40.0985°S × 144.0005°E); Cooper Bluff (39.7021°S × 143.8728°E); Cowper Point, Sea Elephant Bay (39.8223°S × 144.1273°E); Currie Harbour (39.9270°S × 143.8446°E); Disappointment Bay (39.6006°S × 143.9843°E); East coast of KI (unlocalised) (39.9121°S × 144.1103°E); Elephant Shoal Reef (40.1380°S × 144.0810°E); Ettrick Beach (39.9922°S × 143.8876°E); Fitzmaurice Bay (40.0618°S × 143.8816°E); Foreshore S of Currie (39.9489°S × 143.8601°E); Fraser Beach (unlocalised) (39.9121°S × 144.1103°E); Grassy (unlocalised) (40.0615°S × 144.0630°E); Grassy Harbour (40.0624°S × 144.0630°E); Gulchway, Stokes Point (40.1435°S × 143.9157°E); Halfmoon Bay (39.9489°S × 143.8601°E); KI (offshore, unlocalised) (39.6510°S × 144.0780°E); KI (unlocalised) (39.9270°S × 143.8446°E); Lavinia Beach (unlocalised) (39.6503°S × 144.0782°E); Lavinia Beach near Lake Martha Lavinia (39.6503°S × 144.0782°E); Little Porky Beach (39.8549°S × 143.8602°E); Naracoopa foreshore (39.9166°S × 144.1179°E); Pass River Bay (39.8010°S × 143.8648°E); Porky Beach (39.8479°S × 143.8602°E); Red Hut Point (40.0991°S × 144.0005°E); Sandblow Bay, Grassy Harbour (40.0689°S × 144.0482°E); Sea Elephant Beach (unlocalised) (39.8785°S × 144.1047°E); Sea Elephant Lagoon (39.8209°S × 144.11281°E); Seal Point (40.1107°S × 143.9779°E); South coast of KI (unlocalised) (40.1243°S × 143.9043°E); Surprise Bay (40.1286°S × 143.908°E); Unlucky Bay (39.8228°S × 143.8616°E); Victoria Cove (39.5951°S × 143.9344°E); West coast of KI (unlocalised) (39.927°S × 143.8446°E); Yellow Rock Beach (39.628°S × 143.9324°E).

Record sources and their acronyms

Australian Museum, via *Atlas of Living Australia* (AMS); Annabel and Peter Larkey (APL); Gabriel (1956) (CJG); Jeannette Dennison (JD); Mulder (1902) (JFM); Kevin J. Bonham (KJB); King Island Museum (KIM); Margaret H. Richmond (MHR); Marine Research Group (MRG); May & McPherson (1953) (MAM); Museum Victoria, via *Atlas of Living Australia* (MV); Queen Victoria Museum and Art Gallery (QVMAG); Simon J. Grove, Ben U. Grove and Robert de Little, March 2013 (SGRDL); Tasmanian Museum and Art Gallery (TMAG); May (1924) (WLM).

Systematic list

Broadly speaking, this checklist follows a well-established taxonomic order for molluscan families that is relatively stable. However, other than class, higher taxonomic rankings are omitted, partly because these are in a constant state of flux.

POLYPLACOPHORA

Acanthochitonidae

Acanthochiton bednalli (Pilsbry, 1894): Elephant Shoal Reef (CJG)
Acanthochiton granostriatus (Pilsbry, 1894): Fraser Bch (unlocalised) (QVMAG)
Acanthochiton kimberi (Torr, 1912): KI (unlocalised) (WLM)
Acanthochiton sueurii (Blainville, 1825): Currie Hbr (QVMAG); Grassy Hbr (MRG); KI (unlocalised) (WLM); Naracoopa (MRG); Surprise Bay (MRG)
Craspedochiton variabilis (A. Adams & Angas, 1864): KI (unlocalised) (WLM)
Notoplax costata (A. Adams & Angas, 1864): KI (unlocalised) (MV, WLM)
Notoplax rubrostrata (Torr, 1912): Currie Hbr (MRG)

Cryptoplacidae

Cryptoplax striata (Lamarck, 1819): Currie Hbr (MRG); KI (unlocalised) (QVMAG, WLM); Naracoopa (MRG); Surprise Bay (MRG); Victoria Cove (MRG)

Chitonidae

Rhyssoplax calliozona (Pilsbry, 1894): Elephant Shoal Reef (CJG); KI (unlocalised) (TMAG)
Rhyssoplax diaphora (Iredale & May, 1916): Currie Hbr (MRG); Grassy Hbr (MRG)
Rhyssoplax tricostalis Pilsbry, 1894: Elephant Shoal Reef (CJG)
Sypharochiton pelliserpentis (Quoy & Gaimard, 1836): Lavinia Bch (SGRDL); Naracoopa (SGRDL)

Ischnochitonidae

Callistochiton antiquus (Reeve, 1847): Currie Hbr (MRG); KI (unlocalised) (WLM)
Callochiton crocinus (Reeve, 1847): Currie Hbr (MRG)
Ischnochiton australis (Blainville, 1825): Black Pt, Seal Bay (SGRDL); C Wickham (E) (SGRDL); City of Melbourne Bay (SGRDL); Colliers Bch (SGRDL); Disappointment Bay (SGRDL); Fitzmaurice Bay (SGRDL); Grassy Hbr (SGRDL, MRG); KI (unlocalised) (WLM); Naracoopa (SGRDL, MRG); Red Hut Pt (SGRDL); Seal Pt (SGRDL); Surprise Bay (MRG)
Ischnochiton cariosus (Pilsbry, 1892): Ettrick Bch (MRG); Naracoopa (MRG)
Ischnochiton elongatus (Blainville, 1825): Currie Hbr (MRG); Grassy Hbr (MRG); Naracoopa (MRG)
Ischnochiton lineolatus (Blainville, 1825): KI (unlocalised) (WLM)
Ischnochiton smaragdinus (Angas, 1867): KI (unlocalised) (WLM)
Ischnochiton subviridis (Iredale & May, 1916): Fraser Bch (unlocalised) (QVMAG); KI (unlocalised) (WLM)
Ischnochiton variegatus (H. Adams & Angas, 1864): Ettrick Bch (MRG); Grassy Hbr (MRG); KI (unlocalised) (WLM); Surprise Bay (MRG); Victoria Cove (MRG)
Ischnochiton versicolor (Sowerby, 1840): Ettrick Bch (MRG); Grassy Hbr (MRG); Naracoopa (MRG); Surprise Bay (MRG)
Ischnochiton virgatus (Reeve, 1848): KI (unlocalised) (WLM)

Mopaliidae

Plaxiphora albida (Blainville, 1825): Black Pt, Seal Bay (SGRDL); C Wickham (E) (SGRDL); City of Melbourne Bay (SGRDL); Currie Hbr (SGRDL, MRG); Disappointment Bay (SGRDL); Ettrick Bch (SGRDL); Fitzmaurice Bay (SGRDL); Grassy Hbr (SGRDL, MRG); Gulchway, Stokes Pt (SGRDL); KI (unlocalised) (WLM); Naracoopa (SGRDL, MRG); Porky Bch (SGRDL); Red Hut Pt (SGRDL); Sandblow Bay, Grassy Hbr (SGRDL); Seal Pt (SGRDL); Surprise Bay (MRG); Victoria Cove (MRG)
Plaxiphora matthewsi (Iredale, 1910): KI (unlocalised) (WLM)

Lepidopleuridae

Leptochiton badius (Hedley & Hull, 1909): Currie Hbr (MRG)
Leptochiton matthewsianus (Bednall, 1906): Currie Hbr (MRG)

BIVALVIA

Nuculanidae

Nuculana dohrni (Hanley, 1861): Elephant Shoal Reef (CJG)

Nuculidae

Ennucula obliqua (Lamarck, 1819): KI (unlocalised) (JFM)

Pronucula pusilla (Angas, 1877): Currie Hbr (SGRDL, MRG); Ettrick Bch (SGRDL); Fitzmaurice Bay (SGRDL, TMAG); KI (unlocalised) (WLM); Naracoopa (MRG); Pass R Bay (TMAG); Seal Pt (SGRDL); Surprise Bay (SGRDL)

Solemyidae

Solemya velesiana Iredale, 1931: Ettrick Bch (SGRDL)

Arcidae

Acar squamosa (Lamarck, 1819): Colliers Bch (SGRDL); Elephant Shoal Reef (CJG); Fitzmaurice Bay (SGRDL, TMAG); Lt Porky Bch (SGRDL); Naracoopa (MRG); Pass R Bay (TMAG); Seal Pt (SGRDL)

Barbatia pistachia (Lamarck, 1819): Blowhole, Sea Elephant Bay (SGRDL); C Wickham (E) (SGRDL); Colliers Bch (SGRDL); Cowper Pt, Sea Elephant Bay (SGRDL); Disappointment Bay (SGRDL); Elephant Shoal Reef (CJG); Grassy Hbr (SGRDL, MRG); Lavinia Bch (SGRDL, KIM); Naracoopa (SGRDL, MHR); Pass R Bay (TMAG); Red Hut Pt (SGRDL); Yellow Rock Bch (SGRDL, TMAG, MHR)

Glycymerididae

Glycymeris mayi Cotton, 1947: Colliers Bch (SGRDL); Cowper Pt, Sea Elephant Bay (SGRDL); Elephant Shoal Reef (CJG); Fitzmaurice Bay (TMAG); Naracoopa (SGRDL, TMAG)

Glycymeris striatularis (Lamarck, 1819): Black Pt, Seal Bay (SGRDL); Blowhole, Sea Elephant Bay (SGRDL); Colliers Bch (SGRDL); Cowper Pt, Sea Elephant Bay (SGRDL); Disappointment Bay (SGRDL); KI (unlocalised) (QVMAG); Lavinia Bch (SGRDL, TMAG, MHR); Naracoopa (SGRDL, TMAG, MHR); Sandblow Bay, Grassy Hbr (SGRDL); Yellow Rock Bch (SGRDL)

Tucetona flabellata (Tenison Woods, 1877): Blowhole, Sea Elephant Bay (SGRDL); Colliers Bch (SGRDL); Cowper Pt, Sea Elephant Bay (SGRDL); Elephant Shoal Reef (CJG); KI (unlocalised) (WLM); Lavinia Bch (SGRDL, TMAG, MHR); Naracoopa (SGRDL, TMAG, MHR); Yellow Rock Bch (SGRDL, TMAG, MHR)

Limopsidae

Limopsis tenisoni Tenison Woods, 1878: Elephant Shoal Reef (CJG)

Lissarca rhomboidalis Verco, 1907: Colliers Bch (SGRDL); Ettrick Bch (SGRDL); Fitzmaurice Bay (SGRDL, TMAG); Halfmoon Bay (TMAG, MHR); KI (unlocalised) (WLM); Lt Porky Bch (SGRDL); Pass R Bay (TMAG); Seal Pt (SGRDL)

Lissarca rubricata (Tate, 1886): Colliers Bch (SGRDL); Elephant Shoal Reef (CJG); Fitzmaurice Bay (SGRDL, TMAG); Halfmoon Bay (TMAG, MHR); Seal Pt (SGRDL)

Philobryidae

Cosa fibriata Tate, 1898: Fitzmaurice Bay (TMAG)

Lissarca rubricata (Tate, 1886): Colliers Bch (SGRDL); Elephant Shoal Reef (CJG); Fitzmaurice Bay (SGRDL, TMAG); Seal Pt (SGRDL)

Philobrya crenatulifera (Tate, 1892): Colliers Bch (SGRDL); Currie Hbr (SGRDL, MRG); Ettrick Bch (SGRDL, MRG); Fitzmaurice Bay (SGRDL, TMAG); Fraser Bch (unlocalised) (TMAG); Grassy Hbr (MRG); Halfmoon Bay (TMAG, MHR); KI (unlocalised) (JFM); Lt Porky Bch (SGRDL); Naracoopa (MRG); Pass R Bay (TMAG); Seal Pt (SGRDL)

Philobrya rubra (Hedley, 1904): Colliers Bch (SGRDL); Ettrick Bch (SGRDL); Fitzmaurice Bay (SGRDL, TMAG); KI (unlocalised) (WLM); Lt Porky Bch (SGRDL); Naracoopa (TMAG, MHR, MRG); Seal Pt (SGRDL)

Limidae

Lima nimbifer Iredale, 1924: Fitzmaurice Bay (SGRDL); S coast of KI (unlocalised) (TMAG)

Limatula strangei (Sowerby, 1872): Colliers Bch (SGRDL); Elephant Shoal Reef (CJG); Fitzmaurice Bay (SGRDL, TMAG); KI (unlocalised) (WLM); Yellow Rock Bch (TMAG, MHR)

Limea austrina (E. A. Smith, 1891): KI (unlocalised) (AMS); Naracoopa (JD)

Mytilidae

Austromytilus rostratus (Dunker, 1857): C Wickham (E) (SGRDL); Colliers Bch (SGRDL); Cooper Bluff (MRG); Currie Hbr (SGRDL); Disappointment Bay (SGRDL); Grassy (unlocalised) (TMAG); Grassy Hbr (SGRDL); KI (unlocalised) (QVMAG, WLM); Lavinia Bch (SGRDL, MHR); Naracoopa (SGRDL); Pass R Bay (TMAG); Red Hut Pt (SGRDL); Sandblow Bay, Grassy Hbr (SGRDL); Seal Pt (SGRDL); Yellow Rock Bch (TMAG, MHR)

Brachidontes erosus (Lamarck, 1819): Ettrick Bch (SGRDL); KI (unlocalised) (QVMAG); Yellow Rock Bch (TMAG, MHR)

Dacrydium radians Suter, 1908: Elephant Shoal Reef (CJG)

Gibbomodiola albicostata Lamarck, 1819: Colliers Bch (SGRDL); Cowper Pt, Sea Elephant Bay (SGRDL); Currie Hbr (MRG); KI (unlocalised) (QVMAG); Lavinia Bch (SGRDL, MHR); Naracoopa (MRG); Yellow Rock Bch (MHR)

Gregariella barbata (Reeve, 1858): Elephant Shoal Reef (CJG); Fitzmaurice Bay (SGRDL, TMAG); Seal Pt (SGRDL)

Modiolus areolatus Gould, 1850: Black Pt, Seal Bay (SGRDL); C Wickham (E) (SGRDL); Colliers Bch (SGRDL); Cowper Pt, Sea Elephant Bay (SGRDL); Elephant Shoal Reef (CJG); Fitzmaurice Bay (SGRDL, TMAG); Grassy Hbr (SGRDL); Halfmoon Bay (MHR); KI (unlocalised) (WLM); Lavinia Bch (SGRDL); Naracoopa (SGRDL, TMAG, MHR); Pass R Bay (TMAG); Sandblow Bay, Grassy Hbr (SGRDL); Seal Pt (SGRDL); S coast of KI (unlocalised) (TMAG); W coast of KI (unlocalised) (TMAG); Yellow Rock Bch (SGRDL, TMAG, MHR)

Musculus impactus (Hermann, 1782): C Wickham (E) (SGRDL); Yellow Rock Bch (SGRDL, TMAG, MHR)

Mytilus galloprovincialis Lamarck, 1819: Grassy Hbr (MRG)

Xenostrobus pulex (Lamarck, 1819): Ettrick Bch (SGRDL); Fitzmaurice Bay (SGRDL, TMAG); Grassy Hbr (MRG); Halfmoon Bay (TMAG, MHR); Lavinia Bch (SGRDL); Lt Porky Bch (SGRDL); Naracoopa (SGRDL, TMAG, MRG); Pass R Bay (TMAG); Seal Pt (SGRDL); Victoria Cove (MRG)

Ostreidae

Crasostrea gigas (Thunberg, 1793): Naracoopa (TMAG, MHR); Yellow Rock Bch (SGRDL)

Ostrea angasi Sowerby, 1871: Blowhole, Sea Elephant Bay (SGRDL); C Wickham (E) (SGRDL); Colliers Bch (SGRDL); Cowper Pt, Sea Elephant Bay (SGRDL); Disappointment Bay (SGRDL); Grassy Hbr (MRG); KI (unlocalised) (KIM, WLM); Lavinia Bch (SGRDL, TMAG, MHR); Naracoopa (SGRDL, MHR); Sandblow Bay, Grassy Hbr (SGRDL); Seal Pt (SGRDL); Yellow Rock Bch (SGRDL, TMAG, MHR)

Pectinidae

Equichlamys bifrons (Lamarck, 1819): Yellow Rock Bch (MHR)

Mimachlamys asperima (Lamarck, 1819): Bass Strait NE of KI, scallop survey site 01 (TMAG); Blowhole, Sea Elephant Bay (SGRDL); Colliers Bch (SGRDL); Cowper Pt, Sea Elephant Bay (SGRDL); Disappointment Bay (SGRDL); Elephant Shoal Reef (CJG); Grassy (unlocalised) (TMAG); KI (unlocalised) (JFM, KIM, WLM); Lavinia Bch (SGRDL, TMAG, MHR); Naracoopa (SGRDL, MHR); Yellow Rock Bch (SGRDL, TMAG, MHR)

Notochlamys hexactes (Lamarck, 1819): Lavinia Bch (SGRDL, MHR); Yellow Rock Bch (SGRDL)

Pecten fumatus Reeve, 1852: Bass Strait NE of KI, scallop survey site

- 01 (TMAG); Blowhole, Sea Elephant Bay (SGRDL); Cowper Pt, Sea Elephant Bay (SGRDL); Currie Hbr (SGRDL); KI (unlocalised) (KIM, WLM); Lavinia Bch (SGRDL, MHR); Naracoopa (SGRDL); Yellow Rock Bch (SGRDL, TMAG, MHR)
- Semipallium aktinos* (Petterd, 1886): Elephant Shoal Reef (CJG); Grassy Hbr (SGRDL); KI (unlocalised) (KIM); Yellow Rock Bch (TMAG)
- Talochlamys pulleineana* (Tate, 1887): Elephant Shoal Reef (CJG)
- Propeamussiidae
Cyclochlamys favus Hedley, 1902: Elephant Shoal Reef (CJG)
- Pinnidae
Atrina tasmanica (Tenison Woods, 1876): Cowper Pt, Sea Elephant Bay (SGRDL); KI (unlocalised) (KIM); Lavinia Bch (SGRDL, MHR)
- Vulsellidae
Electroma papilionacea (Lamarck, 1819): Elephant Shoal Reef (CJG); Fitzmaurice Bay (SGRDL); KI (unlocalised) (JFM); Naracoopa (KIM)
- Vulsella ovata* Lamarck, 1819: C Wickham (E) (SGRDL); Grassy Hbr (SGRDL); Naracoopa (SGRDL, TMAG, MHR); Yellow Rock Bch (TMAG, MHR)
- Trigoniidae
Neotrigonia margaritacea (Lamarck, 1804) / *N. bednalli* (Verco, 1907) (species boundary uncertain): Cowper Pt, Sea Elephant Bay (SGRDL); Disappointment Bay (SGRDL); KI (unlocalised) (QVMAG, WLM); Lavinia Bch (SGRDL, MHR, KIM); Naracoopa (SGRDL, TMAG, MHR); Yellow Rock Bch (SGRDL, TMAG, MHR)
- Hiatellidae
Hiatella australis (Lamarck, 1818): Black Pt, Seal Bay (SGRDL); Colliers Bch (SGRDL); Elephant Shoal Reef (CJG); Ettrick Bch (SGRDL); Fitzmaurice Bay (SGRDL, TMAG); Grassy Hbr (MRG); Lt Porky Bch (SGRDL); Naracoopa (SGRDL); Red Hut Pt (SGRDL); Seal Pt (SGRDL); W coast of KI (unlocalised) (TMAG)
- Panopea australis* Sowerby, 1833: Cowper Pt, Sea Elephant Bay (SGRDL); Lavinia Bch (SGRDL); Yellow Rock Bch (MHR)
- Pholadidae
Barnea australasiae Sowerby, 1849: Naracoopa (TMAG, KIM)
- Barnea obturamentum* Hedley, 1893: Colliers Bch (SGRDL); Grassy (unlocalised) (TMAG); Yellow Rock Bch (SGRDL, TMAG, MHR, KIM)
- Clavagellidae
Humphreyia strangei (A. Adams, 1852): Naracoopa (SGRDL)
- Cuspidariidae
Pseudoneaera tasmanica (Tenison Woods, 1876): Elephant Shoal Reef (CJG)
- Cleidothaeridae
Cleidothaerus albidus (Lamarck, 1819): Black Pt, Seal Bay (SGRDL); Blowhole, Sea Elephant Bay (SGRDL); Boulder Pt (MHR); C Wickham (E) (SGRDL); Cowper Pt, Sea Elephant Bay (SGRDL); E coast of KI (unlocalised) (TMAG); Grassy (unlocalised) (TMAG); Lavinia Bch (SGRDL); Naracoopa (SGRDL); Sandblow Bay, Grassy Hbr (SGRDL); Yellow Rock Bch (SGRDL, TMAG, MHR)
- Myochamidae
Myadora brevis Sowerby, 1829: Colliers Bch (SGRDL); Lavinia Bch (TMAG, MHR); Yellow Rock Bch (TMAG, MHR)
- Myadora complexa* Iredale, 1924: Black Pt, Seal Bay (SGRDL); Colliers Bch (SGRDL); Lavinia Bch (SGRDL)
- Myadora rotundata* Sowerby, 1875: Colliers Bch (SGRDL)
- Myochama anomioides* Stutchbury, 1830: KI (unlocalised) (WLM)
- Laternulidae
Laternula tasmanica Reeve, 1863: Yellow Rock Bch (SGRDL)
- Thraciidae
Thraciopsis peroniana Iredale, 1924: Colliers Bch (SGRDL)
- Cardiidae
Acrosterigma cygnorum (Deshayes, 1855): Fitzmaurice Bay (TMAG); Lavinia Bch (SGRDL); S coast of KI (unlocalised) (TMAG); Yellow Rock Bch (SGRDL, TMAG, MHR)
- Fulvia tenuicostata* (Lamarck, 1819): Blowhole, Sea Elephant Bay (SGRDL); Colliers Bch (SGRDL); Disappointment Bay (SGRDL); Lavinia Bch (SGRDL, TMAG, MHR); Naracoopa (SGRDL, TMAG, MHR); Yellow Rock Bch (SGRDL, TMAG, MHR)
- Nemocardium thetidis* (Hedley, 1902): Elephant Shoal Reef (CJG); Lavinia Bch (SGRDL); Naracoopa (SGRDL, MHR); Yellow Rock Bch (SGRDL, TMAG, MHR)
- Carditidae
Cardita aviculina Lamarck, 1819: Black Pt, Seal Bay (SGRDL); C Wickham (E) (SGRDL); Elephant Shoal Reef (CJG); Fitzmaurice Bay (SGRDL); Grassy Hbr (SGRDL); Halfmoon Bay (TMAG, MHR); KI (unlocalised) (JFM, WLM); Naracoopa (SGRDL); Pass R Bay (TMAG); Red Hut Pt (SGRDL); Sandblow Bay, Grassy Hbr (SGRDL)
- Centrocardita rosulenta* (Tate, 1887): Colliers Bch (SGRDL)
- Purpurocardia amabilis* (Deshayes, 1854): Colliers Bch (SGRDL); Elephant Shoal Reef (CJG); KI (unlocalised) (WLM); Lavinia Bch (SGRDL, TMAG, MHR); Naracoopa (SGRDL, TMAG)
- Purpurocardia bimaculata* (Deshayes, 1854): Elephant Shoal Reef (CJG); Lavinia Bch (SGRDL); Naracoopa (MHR)
- Purpurocardia columnaria* Hedley & May, 1908: Elephant Shoal Reef (CJG)
- Purpurocardia purpurata* (Deshayes, 1854): Elephant Shoal Reef (CJG)
- Vimentum dilectum* (E.A. Smith, 1885): Elephant Shoal Reef (CJG)
- Condylocardiidae
Carditella jaffaensis (Cotton & Godfrey, 1938): Colliers Bch (SGRDL); Currie Hbr (SGRDL); Ettrick Bch (SGRDL); Fitzmaurice Bay (SGRDL, TMAG); KI (unlocalised) (WLM); Lt Porky Bch (SGRDL); Seal Pt (SGRDL); Surprise Bay (MRG)
- Carditellopsis elegantula* (Tate & May, 1901): Elephant Shoal Reef (CJG); Fitzmaurice Bay (TMAG)
- Condylocardia limaeformis* Cotton, 1930: Colliers Bch (SGRDL); Fitzmaurice Bay (SGRDL, TMAG); Lt Porky Bch (SGRDL)
- Condylocardia notoaustralis* Cotton, 1930: Colliers Bch (SGRDL); Fitzmaurice Bay (SGRDL); Lt Porky Bch (SGRDL); Seal Pt (SGRDL)
- Condylocardia pectinata* (Tate & May, 1900): Colliers Bch (SGRDL); Currie Hbr (SGRDL); Fitzmaurice Bay (SGRDL, TMAG); Halfmoon Bay (TMAG); KI (unlocalised) (JFM); Lt Porky Bch (SGRDL); Seal Pt (SGRDL)
- Condylocardia rectangularis* Cotton, 1930: Fitzmaurice Bay (TMAG); Halfmoon Bay (TMAG, MHR); Lt Porky Bch (SGRDL)
- Condylocuna projecta* (Hedley, 1902): Fitzmaurice Bay (TMAG); Seal Pt (SGRDL)
- Cuna concentrica* Hedley, 1902: Colliers Bch (SGRDL); Fitzmaurice Bay (TMAG); Seal Pt (SGRDL)
- Cunanax subradiata* (Tate, 1889): Elephant Shoal Reef (CJG)
- Cuna delta* (Tate & May, 1900): Seal Pt (SGRDL)
- Hamacuna hamata* (Hedley & May, 1908): Elephant Shoal Reef (CJG)
- Ovacuna atkinsoni* (Tenison Woods, 1877): Fitzmaurice Bay (SGRDL)

- Propecuna obliquissima* (Tate, 1887): Colliers Bch (SGRDL); Elephant Shoal Reef (CJG)
- Crassatellidae
Eucrassatella kingicola (Lamarck, 1805): C Wickham (E) (SGRDL); Cowper Pt, Sea Elephant Bay (SGRDL); KI (unlocalised) (TMAG); Lavinia Bch (SGRDL, MHR, KIM); Naracoopa (SGRDL, TMAG, MHR); Yellow Rock Bch (MHR)
- Salaputium micrum* (Verco, 1895): Elephant Shoal Reef (CJG)
Talabrica aurora (A. Adams & Angas, 1864): Elephant Shoal Reef (CJG); KI (unlocalised) (AMS)
- Basterotiidae
Basterotia subalata (Gatliff & Gabriel, 1910): Lt Porky Bch (SGRDL)
- Cyamiidae
Cyamium communis Hedley, 1906: Colliers Bch (SGRDL); Fitzmaurice Bay (TMAG); Seal Pt (SGRDL)
Gaimardia rostellata (Tate, 1889): KI (unlocalised) (JFM)
Gaimardia tasmanica (Beddome, 1882): Colliers Bch (SGRDL); Currie Hbr (SGRDL); Ettrick Bch (SGRDL); Fitzmaurice Bay (SGRDL, TMAG); Halfmoon Bay (TMAG, MHR); KI (unlocalised) (TMAG); Lt Porky Bch (SGRDL); Seal Pt (SGRDL); S coast of KI (unlocalised) (TMAG)
Reloncavia mactroides Tate & May, 1900: Colliers Bch (SGRDL); Elephant Shoal Reef (CJG); Fitzmaurice Bay (TMAG)
- Neoleptonidae
Neolepton planiliratum (Gatliff & Gabriel, 1911): Currie Hbr (SGRDL); Ettrick Bch (SGRDL); Fitzmaurice Bay (SGRDL); Grassy Hbr (MRG); Lt Porky Bch (SGRDL); Naracoopa (MRG); Seal Pt (SGRDL)
- Galeommatidae
Arthritica helmsi Heldey, 1915: Sea Elephant Lagoon (MRG)
Borniola radiata (Hedley, 1905): Fitzmaurice Bay (TMAG)
Kellia rotunda (Deshayes, 1855): Elephant Shoal Reef (CJG)
Lasaea australis (Lamarck, 1818): C Wickham (E) (SGRDL); Colliers Bch (SGRDL); Currie Hbr (SGRDL); Ettrick Bch (SGRDL, MRG); Fitzmaurice Bay (SGRDL, TMAG); Halfmoon Bay (TMAG, MHR); KI (unlocalised) (JFM, TMAG, WLM); Lt Porky Bch (SGRDL); Naracoopa (SGRDL); Pass R Bay (TMAG); Seal Pt (SGRDL); Surprise Bay (SGRDL, MRG); Victoria Cove (MRG)
Lepton trigonale Tate, 1879: Colliers Bch (SGRDL); Currie Hbr (SGRDL); Fitzmaurice Bay (SGRDL, TMAG); Lt Porky Bch (SGRDL)
Marikellia solida (Angas, 1877): Grassy Hbr (SGRDL); Seal Pt (SGRDL)
Myllita auriculata E.A. Smith, 1891: KI (unlocalised) (JFM)
Myllita deshayesi d'Orbigny & Récluz, 1850: Currie Hbr (SGRDL); Ettrick Bch (SGRDL); Fitzmaurice Bay (SGRDL, TMAG, MHR); KI (unlocalised) (JFM, WLM); Lt Porky Bch (SGRDL); Seal Pt (SGRDL); Surprise Bay (TMAG, MAM)
Myllita tasmanica Tenison Woods, 1875: C Wickham (E) (SGRDL); Currie Hbr (SGRDL); Ettrick Bch (SGRDL); Fitzmaurice Bay (SGRDL, TMAG); KI (unlocalised) (JFM, TMAG, QVMAG); Lt Porky Bch (SGRDL); Pass R Bay (TMAG)
Mysella donaciformis Angas, 1878: Colliers Bch (SGRDL); Currie Hbr (SGRDL, MRG); Ettrick Bch (SGRDL); Fitzmaurice Bay (SGRDL); KI (unlocalised) (WLM); Lt Porky Bch (SGRDL); Naracoopa (MRG); Pass R Bay (TMAG); Seal Pt (SGRDL)
Mysella dromanaensis (Gatliff & Gabriel, 1912): Colliers Bch (SGRDL); Currie Hbr (SGRDL); Ettrick Bch (SGRDL); Fitzmaurice Bay (SGRDL); Lt Porky Bch (SGRDL); Seal Pt (SGRDL)
Mysella lactea Hedley, 1902: Currie Hbr (SGRDL); Ettrick Bch (SGRDL); Fitzmaurice Bay (SGRDL); Lt Porky Bch (SGRDL); Seal Pt (SGRDL)
- Scintillona cryptozoica* (Hedley, 1917): Elephant Shoal Reef (CJG); Ettrick Bch (SGRDL); Seal Pt (SGRDL)
- Lucinidae
Callucina lacteola (Tate, 1897): KI (unlocalised) (JFM, MAM, WLM)
Cardiolucina crassilirata (Tate, 1887): Currie Hbr (SGRDL); Lavinia Bch (SGRDL)
Codakia perobliqua (Tate, 1892): KI (unlocalised) (QVMAG); W coast of KI (unlocalised) (QVMAG)
Divalucina cumingi (A. Adams & Angas, 1863): Lavinia Bch (SGRDL); Yellow Rock Bch (TMAG, MHR)
Epicodakia tatei (Angas, 1879): Black Pt, Seal Bay (SGRDL); British Admiral Bch (TMAG); C Wickham (E) (SGRDL); Currie Hbr (SGRDL); Ettrick Bch (SGRDL); Fitzmaurice Bay (SGRDL, TMAG, MHR); Grassy Hbr (SGRDL); KI (unlocalised) (JFM, MHR); Lavinia Bch (SGRDL); Naracoopa (MRG); Pass R Bay (TMAG, MHR); Porky Bch (SGRDL); Red Hut Pt (SGRDL); Seal Pt (SGRDL); Surprise Bay (SGRDL)
Myrtea botanica Hedley, 1918: Halfmoon Bay (TMAG, MHR); KI (unlocalised) (JFM); Lavinia Bch (SGRDL)
Wallucina assimilis (Angas, 1868): Colliers Bch (SGRDL); KI (unlocalised) (JFM); Lavinia Bch (SGRDL); Yellow Rock Bch (TMAG)
- Ungulinidae
Diplodonta tasmanica Tenison Woods, 1876: KI (unlocalised) (JFM); Naracoopa (MRG)
Numella adamsi (Angas, 1867): Colliers Bch (SGRDL)
- Mactridae
Lutraria rhynchaena Jonas, 1844: Yellow Rock Bch (SGRDL)
Mactra jacksonensis E. A. Smith, 1885: Colliers Bch (SGRDL); Lavinia Bch (SGRDL); Yellow Rock Bch (TMAG)
Mactra pura Reeve, 1854: Lavinia Bch (SGRDL); Yellow Rock Bch (MHR)
Mactrotoma antecedens Iredale, 1930: Cowper Pt, Sea Elephant Bay (SGRDL)
Spisula trigonella (Lamarck, 1818): Lavinia Bch (SGRDL); Naracoopa (SGRDL); Red Hut Pt (SGRDL); Yellow Rock Bch (TMAG, MHR)
- Mesodesmatidae
Anapella cycladea (Lamarck, 1818): Colliers Bch (SGRDL); Ettrick Bch (SGRDL); Yellow Rock Bch (SGRDL, MHR)
Atactodea cuneata (Lamarck, 1818): S coast of KI (unlocalised) (TMAG)
Paphies elongata (Reeve, 1854): Blowhole, Sea Elephant Bay (SGRDL); Colliers Bch (SGRDL); Cowper Pt, Sea Elephant Bay (SGRDL); Disappointment Bay (SGRDL); Lavinia Bch (SGRDL, TMAG, MHR, KIM); Naracoopa (SGRDL, MHR); Yellow Rock Bch (SGRDL, TMAG, MHR)
- Solenidae
Solen vaginoides (Lamarck, 1818): KI (unlocalised) (QVMAG, KIM, WLM); Lavinia Bch (SGRDL, MHR); Naracoopa (MHR); Yellow Rock Bch (TMAG, MHR)
- Donacidae
Donax deltooides Lamarck, 1818: Lavinia Bch (SGRDL); Naracoopa (MHR); Seal Pt (SGRDL)
- Psammobiidae
Gari kenyoniana (Pritchard & Gatliff, 1904): Cowper Pt, Sea Elephant Bay (SGRDL); KI (unlocalised) (QVMAG); Lavinia Bch (SGRDL); Yellow Rock Bch (SGRDL, TMAG, MHR)
Gari livida (Lamarck, 1818): Colliers Bch (SGRDL)
- Tellinidae
Macomona deltoidalis (Lamarck, 1818): Cowper Pt, Sea Elephant Bay (SGRDL); Lavinia Bch (SGRDL); S coast of KI

(unlocalised) (TMAG); Yellow Rock Bch (SGRDL, TMAG, MHR)

Veneridae

Callista diemenensis (Hanley, 1844): Blowhole, Sea Elephant Bay (SGRDL); Cowper Pt, Sea Elephant Bay (SGRDL); Grassy Hbr (SGRDL); KI (unlocalised) (WLM); Lavinia Bch (SGRDL, TMAG, MHR, KIM); Naracoopa (SGRDL, MHR); Yellow Rock Bch (SGRDL, TMAG, MHR)

Callista kingii (Gray, 1826): Blowhole, Sea Elephant Bay (SGRDL); Cowper Pt, Sea Elephant Bay (SGRDL); Lavinia Bch (SGRDL, TMAG, MHR); Naracoopa (SGRDL); Yellow Rock Bch (TMAG, MHR)

Bassina disjecta (Perry, 1811): Bass Strait NE of KI, scallop survey site 42 (TMAG); Cowper Pt, Sea Elephant Bay (SGRDL); KI (unlocalised) (QVMAG); Lavinia Bch (SGRDL, KIM); Naracoopa (SGRDL); Yellow Rock Bch (TMAG, MHR)

Chioneryx cardioides (Lamarck, 1818): Colliers Bch (SGRDL); Elephant Shoal Reef (CJG); Fitzmaurice Bay (TMAG)

Dosinia caerulea Reeve, 1850: Blowhole, Sea Elephant Bay (SGRDL); Cowper Pt, Sea Elephant Bay (SGRDL); Lavinia Bch (SGRDL); Yellow Rock Bch (SGRDL, TMAG, MHR)

Dosinia crocea Deshayes, 1853: Colliers Bch (SGRDL); Cowper Pt, Sea Elephant Bay (SGRDL); Lavinia Bch (SGRDL); Yellow Rock Bch (SGRDL, TMAG, MHR, KIM)

Dosinia victoriae Gatliff & Gabriel, 1914: Elephant Shoal Reef (CJG); Lavinia Bch (MHR); Yellow Rock Bch (MHR)

Gomphinella undulosa (Lamarck, 1818): Black Pt, Seal Bay (SGRDL); Colliers Bch (SGRDL); Cowper Pt, Sea Elephant Bay (SGRDL); KI (unlocalised) (TMAG, KIM, WLM); Lavinia Bch (SGRDL, TMAG, MHR); Naracoopa (SGRDL, MHR); Red Hut Pt (SGRDL); Seal Pt (SGRDL); S coast of KI (unlocalised) (TMAG); Yellow Rock Bch (SGRDL)

Gouldiopa australis Angas, 1865: Colliers Bch (SGRDL)

Irus carditoides (Lamarck, 1818): Black Pt, Seal Bay (SGRDL); C Wickham (E) (SGRDL); Colliers Bch (SGRDL); Currie Hbr (SGRDL); Disappointment Bay (SGRDL); Ettrick Bch (SGRDL, TMAG); Fitzmaurice Bay (SGRDL, TMAG); Grassy (unlocalised) (TMAG); Grassy Hbr (SGRDL); Halfmoon Bay (MHR); KI (unlocalised) (JFM, QVMAG, WLM); Lavinia Bch (SGRDL); Naracoopa (SGRDL, MHR, KIM); Pass R Bay (TMAG); W coast of KI (unlocalised) (TMAG); Yellow Rock Bch (SGRDL)

Irus griseus (Lamarck, 1818): Currie Hbr (SGRDL)

Katelsia rhyiphora (Lamy, 1935): Black Pt, Seal Bay (SGRDL); Colliers Bch (SGRDL); Cowper Pt, Sea Elephant Bay (SGRDL); Lavinia Bch (SGRDL)

Katelsia scalarina (Lamarck, 1818): Cowper Pt, Sea Elephant Bay (SGRDL); Ettrick Bch (SGRDL, TMAG); Grassy Hbr (SGRDL); Lavinia Bch (SGRDL, MHR); Naracoopa (MHR); Sea Elephant Bch (unlocalised) (TMAG); Yellow Rock Bch (SGRDL)

Placamen placidum (Philippi, 1844): Lavinia Bch (SGRDL); Naracoopa (SGRDL); Yellow Rock Bch (SGRDL, MHR)

Sunetta vaginalis (Menke, 1843): Lavinia Bch (SGRDL, TMAG)

Tawera gallinula (Lamarck, 1818): Blowhole, Sea Elephant Bay (SGRDL); C Wickham (E) (SGRDL); Colliers Bch (SGRDL); Cowper Pt, Sea Elephant Bay (SGRDL); Disappointment Bay (SGRDL); Elephant Shoal Reef (CJG); Grassy Hbr (SGRDL); Lavinia Bch (SGRDL, TMAG, MHR); Naracoopa (SGRDL, TMAG, MHR); S coast of KI (unlocalised) (TMAG); Yellow Rock Bch (SGRDL, TMAG, MHR)

Tawera lagopus (Lamarck, 1818): KI (unlocalised) (WLM); Naracoopa (MHR)

GASTROPOPODA

Euacmaeidae

Euacmaea calamus (Crosse & Fischer, 1864): Colliers Bch (SGRDL); Elephant Shoal Reef (CJG); Fitzmaurice Bay (TMAG); Lt Porky Bch (SGRDL); Sandblow Bay, Grassy Hbr (SGRDL)

Lottiidae

Asteracmea stowae (Verco, 1906): Ettrick Bch (SGRDL); Fitzmaurice Bay (SGRDL, TMAG); Lt Porky Bch (SGRDL); Naracoopa (MRG); Seal Pt (SGRDL)

Lottia mixta (Reeve, 1855): Colliers Bch (SGRDL); Cooper Bluff (MRG); Currie Hbr (SGRDL, MRG); Disappointment Bay (SGRDL); Ettrick Bch (SGRDL, MRG); KI (unlocalised) (WLM); Fitzmaurice Bay (SGRDL, TMAG); Grassy Hbr (SGRDL, MRG); Gulchway, Stokes Pt (SGRDL); Naracoopa (MRG); Pass R Bay (TMAG); Porky Bch (SGRDL)

Notoacmea alta (Oliver, 1926) KI (unlocalised) (JFM)

Notoacmea corrodenda (May, 1920): C Wickham (E) (SGRDL); Currie Hbr (SGRDL); KI (unlocalised) (JFM); Naracoopa (SGRDL); Pass R Bay (TMAG)

Notoacmea flammea (Quoy & Gaimard, 1834): British Admiral Bch (TMAG); C Wickham (E) (SGRDL); Colliers Bch (SGRDL); Currie Hbr (SGRDL, MRG); Ettrick Bch (SGRDL, MRG); Fitzmaurice Bay (SGRDL, TMAG); Grassy Hbr (SGRDL, MRG); KI (unlocalised) (JFM, WLM); Lt Porky Bch (SGRDL); Naracoopa (SGRDL, MRG); Pass R Bay (MHR, TMAG); Porky Bch (SGRDL); Red Hut Pt (SGRDL); Surprise Bay (SGRDL, MRG); Victoria Cove (MRG)

Notoacmea mayi (May, 1923): Fitzmaurice Bay (SGRDL); Lavinia Bch (SGRDL)

Notoacmea petterdi (Tenison Woods, 1876): Fitzmaurice Bay (TMAG); Halfmoon Bay (TMAG); Naracoopa (SGRDL)

Patelloida alticostata (Angas, 1865): Black Pt, Seal Bay (SGRDL); British Admiral Bch (TMAG); C Wickham (E) (SGRDL); City of Melbourne Bay (SGRDL); Cowper Pt, Sea Elephant Bay (SGRDL); Currie Hbr (SGRDL, MRG); Disappointment Bay (SGRDL); E coast of KI (unlocalised) (TMAG); Ettrick Bch (SGRDL, TMAG, MRG); Fitzmaurice Bay (SGRDL); Fitzmaurice Bay (TMAG); Grassy (unlocalised) (TMAG); Grassy Hbr (SGRDL, MRG); Gulchway, Stokes Pt (SGRDL); Halfmoon Bay (MHR); KI (unlocalised) (JFM, WLM); Lavinia Bch (SGRDL, TMAG, MHR); Lt Porky Bch (SGRDL); Naracoopa (SGRDL, TMAG, MHR, MRG); Pass R Bay (TMAG); Porky Bch (SGRDL); Red Hut Pt (SGRDL); Sandblow Bay, Grassy Hbr (SGRDL); Seal Pt (SGRDL); Surprise Bay (SGRDL, MRG); Victoria Cove (MRG); W coast of KI (unlocalised) (TMAG); Yellow Rock Bch (MHR)

Patelloida insignis (Menke, 1843): Black Pt, Seal Bay (SGRDL); British Admiral Bch (TMAG); C Wickham (E) (SGRDL); City of Melbourne Bay (SGRDL); Colliers Bch (SGRDL); Cowper Pt, Sea Elephant Bay (SGRDL); Currie Hbr (SGRDL); Disappointment Bay (SGRDL); Ettrick Bch (SGRDL, TMAG); Fitzmaurice Bay (SGRDL, TMAG); Grassy (unlocalised) (TMAG); Grassy Hbr (SGRDL); KI (unlocalised) (JFM); Lavinia Bch (SGRDL, TMAG, MHR); Lt Porky Bch (SGRDL); Naracoopa (SGRDL, TMAG, MHR); Pass R Bay (TMAG); Porky Bch (SGRDL); Sandblow Bay, Grassy Hbr (SGRDL); Surprise Bay (SGRDL); W coast of KI (unlocalised) (TMAG); Yellow Rock Bch (SGRDL, TMAG, MHR)

Patelloida latistrigata (Angas, 1865): C Wickham (E) (SGRDL); Colliers Bch (SGRDL); Currie Hbr (SGRDL, MRG); Ettrick Bch (SGRDL); Fitzmaurice Bay (SGRDL, TMAG, MHR); Grassy Hbr (SGRDL); Halfmoon Bay (TMAG, MHR); KI (unlocalised) (JFM, WLM); Lt Porky Bch (SGRDL); Naracoopa (SGRDL, MRG); Pass R Bay (TMAG); Red Hut Pt (SGRDL); Sandblow Bay, Grassy Hbr (SGRDL); Seal Pt (SGRDL)

Patelloida victoriana (Singleton, 1937): Black Pt, Seal Bay (SGRDL); C Wickham (E) (SGRDL); City of Melbourne Bay (SGRDL); Disappointment Bay (SGRDL); Fitzmaurice Bay (TMAG); Grassy (unlocalised) (TMAG); Grassy Hbr (SGRDL); Lavinia Bch (SGRDL); Lt Porky Bch (SGRDL); Naracoopa (SGRDL, TMAG, MHR); Red Hut Pt (SGRDL); Sandblow Bay, Grassy Hbr (SGRDL); Seal Pt (SGRDL); Surprise Bay (SGRDL); Yellow Rock Bch (SGRDL, TMAG, MHR)

Nacellidae

Cellana solida (Blainville, 1825): Black Pt, Seal Bay (SGRDL); Blowhole, Sea Elephant Bay (SGRDL); British Admiral Bch (TMAG); C Wickham (E) (SGRDL); City of Melbourne Bay (SGRDL); Cooper Bluff (MRG); Cowper Pt, Sea Elephant Bay (SGRDL); Currie Hbr (SGRDL); Disappointment Bay (SGRDL); E coast of KI (unlocalised) (TMAG); Ettrick Bch (SGRDL, TMAG); Fitzmaurice Bay (SGRDL, TMAG); Grassy Hbr (SGRDL); Grassy Hbr (MRG); Gulchway, Stokes Pt (SGRDL); Halfmoon Bay (MHR); KI (unlocalised) (TMAG, QVMAG, WLM); Lavinia Bch (MHR); Lavinia Bch (TMAG); Lt Porky Bch (SGRDL); Naracoopa (SGRDL, TMAG, MHR); Pass R Bay (TMAG); Porky Bch (SGRDL); Red Hut Pt (SGRDL); Sandblow Bay, Grassy Hbr (SGRDL); Seal Pt (SGRDL); Surprise Bay (SGRDL, MRG); Victoria Cove (TMAG, MRG); W coast of KI (unlocalised) (TMAG); Yellow Rock Bch (SGRDL, TMAG, MHR)

Cellana tramoserica (Holtén, 1802): Currie Hbr (MRG); KI (unlocalised) (JFM); Naracoopa (MRG)

Patellidae

Scutellastra chapmani (Tenison Woods, 1876): Black Pt, Seal Bay (SGRDL); C Wickham (E) (SGRDL); Colliers Bch (SGRDL); Disappointment Bay (SGRDL); Fitzmaurice Bay (SGRDL, TMAG); Grassy Hbr (SGRDL); Halfmoon Bay (MHR); Lavinia Bch (SGRDL, TMAG, MHR); Lt Porky Bch (SGRDL); Naracoopa (SGRDL, MHR); Pass R Bay (TMAG); Sandblow Bay, Grassy Hbr (SGRDL); Seal Pt (SGRDL); Yellow Rock Bch (SGRDL, TMAG, MHR)

Scutellastra peronii (Blainville, 1825): Black Pt, Seal Bay (SGRDL); British Admiral Bch (TMAG); C Wickham (E) (SGRDL); City of Melbourne Bay (SGRDL); Colliers Bch (SGRDL); Cowper Pt, Sea Elephant Bay (SGRDL); Currie Hbr (MRG); Disappointment Bay (SGRDL); Ettrick Bch (SGRDL, TMAG); Fitzmaurice Bay (SGRDL, TMAG); Grassy (unlocalised) (TMAG); Grassy Hbr (SGRDL); Gulchway, Stokes Pt (SGRDL); KI (unlocalised) (JFM, QVMAG, WLM); Lavinia Bch (SGRDL, TMAG, MHR); Lt Porky Bch (SGRDL); Naracoopa (SGRDL, MHR, MRG); Pass R Bay (TMAG); Red Hut Pt (SGRDL); Sandblow Bay, Grassy Hbr (SGRDL); Seal Pt (SGRDL); Surprise Bay (SGRDL); Victoria Cove (MRG); W coast of KI (unlocalised) (TMAG); Yellow Rock Bch (SGRDL, TMAG, MHR)

Phasianellidae

Phasianella australis (Gmelin, 1791): KI (unlocalised) (QVMAG, WLM); Lavinia Bch (SGRDL); Yellow Rock Bch (SGRDL)

Phasianella ventricosa Swainson, 1822: Black Pt, Seal Bay (SGRDL); British Admiral Bch (TMAG); C Wickham (E) (SGRDL); Catarqui Pt (MHR); City of Melbourne Bay (SGRDL); Cowper Pt, Sea Elephant Bay (SGRDL); Currie Hbr (SGRDL, MRG); Disappointment Bay (SGRDL); Ettrick Bch (SGRDL, TMAG); Fitzmaurice Bay (SGRDL, TMAG); Grassy Hbr (SGRDL, MRG); Gulchway, Stokes Pt (SGRDL); Halfmoon Bay (MHR); KI (unlocalised) (JFM, TMAG, QVMAG, KIM, WLM); Lavinia Bch (SGRDL); Lt Porky Bch (SGRDL); Naracoopa (SGRDL, TMAG, MHR, MRG); Pass R Bay (TMAG); Porky Bch (SGRDL); Seal Pt (SGRDL); S coast of KI (unlocalised) (TMAG); Surprise Bay (SGRDL); Victoria Cove (MRG); W coast of KI (unlocalised) (TMAG); Yellow Rock Bch (SGRDL, TMAG, MHR)

Tricolia rosea (Angas, 1867): Colliers Bch (SGRDL); Currie Hbr (SGRDL); Elephant Shoal Reef (CJG); Ettrick Bch (SGRDL); Fitzmaurice Bay (SGRDL, TMAG); Halfmoon Bay (TMAG, MHR); KI (unlocalised) (JFM, WLM); Lt Porky Bch (SGRDL); Naracoopa (MRG); Pass R Bay (TMAG); Porky Bch (SGRDL); Seal Pt (SGRDL); Surprise Bay (SGRDL)

Haliotidae

Haliotis laevigata Donovan, 1808: Black Pt, Seal Bay (SGRDL); C Wickham (E) (SGRDL); City of Melbourne Bay (SGRDL);

Cowper Pt, Sea Elephant Bay (SGRDL); Currie Hbr (QVMAG); Ettrick Bch (SGRDL, TMAG); KI (unlocalised) (KIM, WLM); Lavinia Bch (SGRDL); Naracoopa (SGRDL, TMAG, MHR); Porky Bch (SGRDL); Seal Pt (SGRDL); Yellow Rock Bch (SGRDL, MHR)

Haliotis rubra Leach, 1814: Black Pt, Seal Bay (SGRDL); Blowhole, Sea Elephant Bay (SGRDL); British Admiral Bch (TMAG); C Wickham (E) (SGRDL); City of Melbourne Bay (SGRDL, TMAG); Colliers Bch (SGRDL); Cowper Pt, Sea Elephant Bay (SGRDL); Currie Hbr (SGRDL, MRG); Disappointment Bay (SGRDL); Elephant Shoal Reef (CJG); Ettrick Bch (SGRDL, TMAG); Fitzmaurice Bay (SGRDL, TMAG, MHR); Grassy (unlocalised) (TMAG, MHR); Grassy Hbr (SGRDL, MRG); Gulchway, Stokes Pt (SGRDL); Halfmoon Bay (MHR); KI (offshore, unlocalised) (KIM); KI (unlocalised) (JFM, QVMAG, WLM); Lavinia Bch (SGRDL); Lt Porky Bch (SGRDL); Naracoopa (SGRDL, TMAG, MHR, MRG); Pass R Bay (TMAG); Porky Bch (SGRDL); Red Hut Pt (SGRDL); Sandblow Bay, Grassy Hbr (SGRDL); Seal Pt (SGRDL); S coast of KI (unlocalised) (TMAG); Surprise Bay (SGRDL, MRG); Victoria Cove (MRG); W coast of KI (unlocalised) (TMAG); Yellow Rock Bch (SGRDL, TMAG, MHR)

Haliotis scalaris emmae Reeve, 1846: Black Pt, Seal Bay (SGRDL); City of Melbourne Bay (SGRDL); Cowper Pt, Sea Elephant Bay (SGRDL); Currie Hbr (SGRDL); Fitzmaurice Bay (TMAG); Grassy Hbr (SGRDL); KI (unlocalised) (WLM); Naracoopa (SGRDL, TMAG, MHR); Sandblow Bay, Grassy Hbr (SGRDL); S coast of KI (unlocalised) (TMAG); Yellow Rock Bch (SGRDL, TMAG, MHR, KIM)

Fissurellidae

Amblychilepas javanicensis (Lamarck, 1822): Grassy (unlocalised) (TMAG); Lavinia Bch (SGRDL, TMAG, MHR); Naracoopa (SGRDL, MHR); Sandblow Bay, Grassy Hbr (SGRDL); Yellow Rock Bch (TMAG, MHR)

Amblychilepas nigrita (Sowerby, 1834): Fitzmaurice Bay (TMAG – as *A. crucis* (Beddome, 1882)); Grassy (unlocalised) (TMAG); KI (unlocalised) (JFM); Lt Porky Bch (SGRDL); Naracoopa (MHR, MRG)

Amblychilepas oblonga (Menke, 1843): C Wickham (E) (SGRDL); Colliers Bch (SGRDL); Cowper Pt, Sea Elephant Bay (SGRDL); Disappointment Bay (SGRDL); Lavinia Bch (SGRDL); Naracoopa (SGRDL, MRG); Seal Pt (SGRDL); Yellow Rock Bch (SGRDL)

Cosmetalepas concatenatus (Crosse & Fischer, 1864): Colliers Bch (SGRDL); KI (unlocalised) (JFM); Lavinia Bch (SGRDL); Victoria Cove (MRG)

Emarginula candida (A. Adams, 1851): British Admiral Bch (TMAG); C Wickham (E) (SGRDL); Colliers Bch (SGRDL); Currie Hbr (SGRDL, MRG); Elephant Shoal Reef (CJG); Fitzmaurice Bay (SGRDL, TMAG); Grassy Hbr (SGRDL, MRG); Halfmoon Bay (TMAG); KI (unlocalised) (JFM); Lavinia Bch (SGRDL); Pass R Bay (TMAG); Porky Bch (SGRDL); Red Hut Pt (SGRDL); Sandblow Bay, Grassy Hbr (SGRDL); Surprise Bay (SGRDL); W coast of KI (unlocalised) (TMAG)

Emarginula dilecta (A. Adams, 1851): Black Pt, Seal Bay (SGRDL); Elephant Shoal Reef (CJG); Fitzmaurice Bay (TMAG); Grassy Hbr (SGRDL); KI (unlocalised) (JFM); Lavinia Bch (SGRDL); Lt Porky Bch (SGRDL); W coast of KI (unlocalised) (TMAG)

Hemitoma submarginatum (Blainville, 1819): Disappointment Bay (SGRDL); Elephant Shoal Reef (CJG); KI (unlocalised) (WLM); Lavinia Bch (SGRDL); Naracoopa (MHR); Yellow Rock Bch (MHR, TMAG)

Macroschisma productum A. Adams, 1850: KI (unlocalised) (APL)
Macroschisma tasmaniae Sowerby, 1866: Colliers Bch (SGRDL); Grassy (unlocalised) (TMAG); KI (unlocalised) (JFM); Lavinia Bch (SGRDL); Naracoopa (SGRDL, MHR); Yellow Rock Bch (TMAG, MHR)

Montfortula rugosa (Quoy & Gaimard, 1834): Black Pt, Seal Bay (SGRDL); British Admiral Bch (TMAG); C Wickham (E)

- (SGRDL); City of Melbourne Bay (TMAG); Currie Hbr (SGRDL); Fitzmaurice Bay (SGRDL, TMAG); Grassy Hbr (MRG); Halfmoon Bay (MHR); KI (unlocalised) (JFM, MHR); Lt Porky Bch (SGRDL); Naracoopa (SGRDL, MRG); Pass R Bay (TMAG); Porky Bch (SGRDL); Red Hut Pt (SGRDL); Sandblow Bay, Grassy Hbr (SGRDL); Surprise Bay (MRG)
- Puncturella harrissoni* Beddome, 1882: Colliers Bch (SGRDL); Currie Hbr (SGRDL); Ettrick Bch (SGRDL); Fitzmaurice Bay (SGRDL, TMAG); KI (unlocalised) (JFM, WLM); Lt Porky Bch (SGRDL); Seal Pt (SGRDL)
- Scutus antipodes* Montfort, 1810: Black Pt, Seal Bay (SGRDL); British Admiral Bch (TMAG); C Wickham (E) (SGRDL); Cowper Pt, Sea Elephant Bay (SGRDL); Ettrick Bch (TMAG); Fitzmaurice Bay (SGRDL, TMAG); Grassy Hbr (SGRDL, MRG); KI (unlocalised) (QVMAG, WLM); Naracoopa (SGRDL, MHR, MRG); Pass R Bay (TMAG); Sandblow Bay, Grassy Hbr (SGRDL); Seal Pt (SGRDL); S coast of KI (unlocalised) (TMAG); Victoria Cove (MRG)
- Tugali cicatricosa* A. Adams, 1851: Bass Strait NE of KI, scallop survey site 08 (TMAG); Colliers Bch (SGRDL); Elephant Shoal Reef (CJG); Lavinia Bch (SGRDL); Naracoopa (SGRDL); Yellow Rock Bch (TMAG, MHR)
- Anatomidae**
- Anatoma australis* Hedley, 1903 / *A. tobeyoides* Geiger & Jansen, 2004: Elephant Shoal Reef (CJG)
- Scissurellidae**
- Incisura remota* (Iredale, 1924): Fitzmaurice Bay (SGRDL, TMAG); KI (unlocalised) (WLM)
- Sinezona beddomei* (Petterd, 1884): Fitzmaurice Bay (SGRDL, TMAG); KI (unlocalised) (WLM)
- Sukashitrochus atkinsoni* (Tenison Woods, 1877): Elephant Shoal Reef (CJG); Ettrick Bch (SGRDL); KI (unlocalised) (WLM); Seal Pt (SGRDL)
- Sukashitrochus pulcher* (Petterd, 1884): Elephant Shoal Reef (CJG); Ettrick Bch (SGRDL); Fitzmaurice Bay (TMAG); Seal Pt (SGRDL)
- Chilodontidae**
- Granata imbricata* (Lamarck, 1816): C Wickham (E) (SGRDL); City of Melbourne Bay (SGRDL); Cowper Pt, Sea Elephant Bay (SGRDL); Disappointment Bay (SGRDL); Fitzmaurice Bay (SGRDL, TMAG); Grassy Hbr (SGRDL); KI (unlocalised) (JFM, QVMAG, KIM, WLM); Lavinia Bch (SGRDL, TMAG, MHR); Naracoopa (SGRDL, TMAG, MHR, MRG); Pass R Bay (TMAG); Sandblow Bay, Grassy Hbr (SGRDL); Seal Pt (SGRDL); Victoria Cove (MRG); Yellow Rock Bch (SGRDL, TMAG, MHR)
- Herpetopoma aspersum* (Philippi, 1846): Black Pt, Seal Bay (SGRDL); C Wickham (E) (SGRDL); City of Melbourne Bay (SGRDL); Currie Hbr (SGRDL); E coast of KI (unlocalised) (TMAG); Elephant Shoal Reef (CJG); Fitzmaurice Bay (SGRDL, TMAG); Grassy Hbr (SGRDL, MRG); Halfmoon Bay (MHR); KI (unlocalised) (JFM, QVMAG, KIM, WLM); Lavinia Bch (SGRDL); Lt Porky Bch (SGRDL); Naracoopa (SGRDL, TMAG, MHR, MRG); Pass R Bay (TMAG); Porky Bch (SGRDL); Red Hut Pt (SGRDL); Seal Pt (SGRDL); W coast of KI (unlocalised) (TMAG); Yellow Rock Bch (MHR)
- Herpetopoma fenestratum* (Tate, 1893): Fitzmaurice Bay (SGRDL, det. LS)
- Herpetopoma scabriusculum* (Angas, 1867): Currie Hbr (SGRDL); Ettrick Bch (SGRDL); Fitzmaurice Bay (SGRDL, TMAG); KI (unlocalised) (JFM, QVMAG, WLM); Pass R Bay (TMAG); Porky Bch (SGRDL); Seal Pt (SGRDL); Surprise Bay (MRG)
- Liottiidae**
- Austroliotia australis* (Kiener, 1839): C Wickham (E) (SGRDL); Halfmoon Bay (MHR); KI (unlocalised) (TMAG); Naracoopa (SGRDL)
- Austroliotia botanica* (Hedley, 1915): Fitzmaurice Bay (SGRDL); Grassy Hbr (SGRDL); Seal Pt (SGRDL)
- Munditia subquadrata* (Tenison Woods, 1878): Currie Hbr (SGRDL, MRG); Elephant Shoal Reef (CJG); Fitzmaurice Bay (TMAG); Grassy Hbr (SGRDL); KI (unlocalised) (JFM, WLM); Lt Porky Bch (SGRDL); Porky Bch (SGRDL); W coast of KI (unlocalised) (TMAG)
- Munditia tasmanica* (Tenison Woods, 1875): Elephant Shoal Reef (CJG)
- Calliostomatidae**
- Astele armillata* (Wood, 1828): Black Pt, Seal Bay (SGRDL); C Wickham (E) (SGRDL); Cowper Pt, Sea Elephant Bay (SGRDL); Elephant Shoal Reef (CJG); KI (unlocalised) (QVMAG, KIM, WLM); Lavinia Bch (SGRDL); Naracoopa (SGRDL, TMAG, MHR); Yellow Rock Bch (TMAG, MHR)
- Astele rubiginosa* (Valenciennes, 1846): KI (unlocalised) (MAM)
- Astele subcarinata* (Swainson, 1855): Elephant Shoal Reef (CJG); KI (unlocalised) (QVMAG); Lavinia Bch (SGRDL); Naracoopa (KIM)
- Calliostoma allporti* (Tenison Woods, 1876): Colliers Bch (SGRDL); Ettrick Bch (SGRDL); Fitzmaurice Bay (SGRDL); Grassy Hbr (SGRDL); Seal Pt (SGRDL)
- Calliostoma hedleyi* Pritchard & Gatliff, 1902: Black Pt, Seal Bay (SGRDL); C Wickham (E) (SGRDL); Grassy Hbr (SGRDL); KI (unlocalised) (JFM); Naracoopa (SGRDL)
- Calliostoma incertum* (Reeve, 1863): Colliers Bch (SGRDL); Elephant Shoal Reef (CJG)
- Calliostoma zietzi* Verco, 1905: Elephant Shoal Reef (CJG)
- Trochidae**
- Alcyna kingensis* (Gabriel, 1956): Elephant Shoal Reef (CJG)
- Austrocochlea constricta* (Lamarck, 1822): Black Pt, Seal Bay (SGRDL); C Wickham (E) (SGRDL); Catarqui Pt (MHR); City of Melbourne Bay (SGRDL, TMAG); Currie Hbr (SGRDL, MRG); E coast of KI (unlocalised) (TMAG); Ettrick Bch (SGRDL, TMAG); Fitzmaurice Bay (SGRDL, TMAG); Foreshore S of Currie (TMAG); Grassy Hbr (SGRDL, MRG); Gulchway, Stokes Pt (SGRDL); Halfmoon Bay (MHR); KI (unlocalised) (TMAG, WLM); Lavinia Bch (SGRDL); Naracoopa (SGRDL, MHR, KIM, MRG); Pass R Bay (TMAG); Porky Bch (SGRDL); Red Hut Pt (SGRDL); Sandblow Bay, Grassy Hbr (SGRDL); Seal Pt (SGRDL); Surprise Bay (SGRDL); Victoria Cove (TMAG, MRG); Yellow Rock Bch (TMAG, MHR)
- Austrocochlea porcata* (A. Adams, 1853): Naracoopa (JD)
- Bankivia fasciata* (Menke, 1830): Colliers Bch (SGRDL); Naracoopa (SGRDL, MHR)
- Botelloides bassianus* (Hedley, 1911): Elephant Shoal Reef (CJG)
- Cantharidella tiberiana* (Crosse, 1863): Colliers Bch (SGRDL); Currie Hbr (SGRDL); Elephant Shoal Reef (CJG); Ettrick Bch (SGRDL, MRG); Fitzmaurice Bay (SGRDL, TMAG); Grassy Hbr (MRG); Halfmoon Bay (TMAG, MHR); KI (unlocalised) (JFM, WLM); Naracoopa (SGRDL, MRG); Pass R Bay (TMAG); Porky Bch (SGRDL); Seal Pt (SGRDL); W coast of KI (unlocalised) (TMAG)
- Charisma josephi* (Tenison Woods, 1877): Elephant Shoal Reef (CJG)
- Chlorodiloma adelaidae* (Philippi, 1849): Black Pt, Seal Bay (SGRDL); C Wickham (E) (SGRDL); City of Melbourne Bay (TMAG); Colliers Bch (SGRDL); Cowper Pt, Sea Elephant Bay (SGRDL); Currie Hbr (MRG); Disappointment Bay (SGRDL); Ettrick Bch (SGRDL); Fitzmaurice Bay (SGRDL, TMAG); Grassy Hbr (SGRDL, MRG); Gulchway, Stokes Pt (SGRDL); KI (unlocalised) (TMAG, WLM); Lavinia Bch (SGRDL); Lt Porky Bch (SGRDL); Naracoopa (SGRDL, TMAG, MHR, KIM, MRG); Pass R Bay (TMAG); Porky Bch (SGRDL); Seal Pt (SGRDL); S coast of KI (unlocalised) (TMAG); Surprise Bay (SGRDL, MRG); Yellow Rock Bch (SGRDL, TMAG, MHR)
- Chlorodiloma odonte* (Wood, 1828): Black Pt, Seal Bay (SGRDL);

- C Wickham (E) (SGRDL); City of Melbourne Bay (SGRDL); Cowper Pt, Sea Elephant Bay (SGRDL); Currie Hbr (SGRDL); Disappointment Bay (SGRDL); Ettrick Bch (SGRDL, TMAG, MRG); Fitzmaurice Bay (SGRDL, TMAG); Grassy Hbr (SGRDL, MRG); Gulchway, Stokes Pt (SGRDL); Halfmoon Bay (MHR); KI (unlocalised) (JFM, QVMAG, WLM); Lavinia Bch (SGRDL); Lt Porky Bch (SGRDL); Naracoopa (SGRDL, TMAG, MHR, MRG); Pass R Bay (TMAG); Porky Bch (SGRDL); Sandblow Bay, Grassy Hbr (SGRDL); Seal Pt (SGRDL); Surprise Bay (SGRDL, MRG); Victoria Cove (MRG); W coast of KI (unlocalised) (TMAG); Yellow Rock Bch (SGRDL, MHR)
- Clanculus aloysii* Tenison Woods, 1876: Elephant Shoal Reef (CJG); KI (unlocalised) (JFM, QVMAG, WLM); Lavinia Bch (SGRDL); Naracoopa (SGRDL); Yellow Rock Bch (TMAG, MHR)
- Clanculus flagellatus* (Philippi, 1848): Black Pt, Seal Bay (SGRDL); C Wickham (E) (SGRDL); Fitzmaurice Bay (TMAG); Grassy Hbr (SGRDL); KI (unlocalised) (KIM, WLM); Lavinia Bch (SGRDL); Naracoopa (SGRDL, MHR); Surprise Bay (MRG); Victoria Cove (MRG); Yellow Rock Bch (SGRDL, TMAG, MHR)
- Clanculus limbatus* (Quoy & Gaimard, 1834): Black Pt, Seal Bay (SGRDL); C Wickham (E) (SGRDL); Colliers Bch (SGRDL); Cowper Pt, Sea Elephant Bay (SGRDL); Currie Hbr (SGRDL, MRG); Fitzmaurice Bay (SGRDL, TMAG); Grassy Hbr (SGRDL, MRG); Halfmoon Bay (MHR); KI (unlocalised) (JFM, QVMAG, KIM, WLM); Lavinia Bch (SGRDL); Naracoopa (SGRDL, MHR, MRG); Pass R Bay (TMAG); Red Hut Pt (SGRDL); Sandblow Bay, Grassy Hbr (SGRDL); W coast of KI (unlocalised) (TMAG); Yellow Rock Bch (SGRDL, TMAG, MHR)
- Clanculus plebejus* (Philippi, 1851): Black Pt, Seal Bay (SGRDL); British Admiral Bch (TMAG); C Wickham (E) (SGRDL); City of Melbourne Bay (TMAG); Currie Hbr (SGRDL, MRG); Elephant Shoal Reef (CJG); Ettrick Bch (SGRDL, MRG); Fitzmaurice Bay (SGRDL, TMAG); Grassy Hbr (SGRDL, MRG); Halfmoon Bay (TMAG, MHR); KI (unlocalised) (JFM, TMAG, QVMAG, WLM); Lavinia Bch (SGRDL); Lt Porky Bch (SGRDL); Naracoopa (SGRDL, TMAG, MHR, MRG); Pass R Bay (TMAG); Porky Bch (SGRDL); Sandblow Bay, Grassy Hbr (SGRDL); Seal Pt (SGRDL); Surprise Bay (SGRDL, MRG); W coast of KI (unlocalised) (TMAG); Yellow Rock Bch (SGRDL, TMAG, MHR)
- Clanculus undatus* (Lamarck, 1816): Black Pt, Seal Bay (SGRDL); C Wickham (E) (SGRDL); Cowper Pt, Sea Elephant Bay (SGRDL); Ettrick Bch (SGRDL); Fitzmaurice Bay (TMAG); Grassy Hbr (SGRDL, MRG); Grassy Hbr (MRG); KI (unlocalised) (QVMAG); Naracoopa (TMAG, MHR, KIM); Pass R Bay (TMAG); Sandblow Bay, Grassy Hbr (SGRDL); Seal Pt (SGRDL); Yellow Rock Bch (SGRDL, MHR)
- Diloma concameratum* (Wood, 1828): British Admiral Bch (TMAG); C Wickham (E) (SGRDL); Catarauqui Pt (MHR); City of Melbourne Bay (SGRDL, TMAG); Colliers Bch (SGRDL); Currie Hbr (SGRDL, MRG); Disappointment Bay (SGRDL); Ettrick Bch (SGRDL, TMAG); Fitzmaurice Bay (SGRDL, TMAG); Grassy Hbr (SGRDL, MRG); Gulchway, Stokes Pt (SGRDL); KI (unlocalised) (JFM, TMAG, QVMAG, WLM); Lavinia Bch (SGRDL); Naracoopa (SGRDL, MHR, MRG); Porky Bch (SGRDL); Red Hut Pt (SGRDL); Sandblow Bay, Grassy Hbr (SGRDL); Seal Pt (SGRDL); Surprise Bay (SGRDL, MRG); Victoria Cove (TMAG, MRG); W coast of KI (unlocalised) (TMAG); Yellow Rock Bch (MHR)
- Ehminolia vitiliginea* Iredale, 1924: Surprise Bay (MRG)
- Fossarina legrandi* Petterd, 1879: Colliers Bch (SGRDL); Currie Hbr (SGRDL); Ettrick Bch (SGRDL, MRG); Ettrick Bch (MRG); Fitzmaurice Bay (SGRDL, TMAG); Fitzmaurice Bay (TMAG); KI (unlocalised) (JFM, WLM); Halfmoon Bay (TMAG, MHR); Lt Porky Bch (SGRDL); Pass R Bay (TMAG); Seal Pt (SGRDL)
- Fossarina petterdi* Crosse, 1870: Currie Hbr (SGRDL); Ettrick Bch (SGRDL); Fitzmaurice Bay (SGRDL); Lt Porky Bch (SGRDL); Pass R Bay (TMAG); Seal Pt (SGRDL)
- Nanula tasmanica* (Petterd, 1879): Elephant Shoal Reef (CJG)
- Phasianotrochus apicinus* (Menke, 1843): Naracoopa (MRG)
- Phasianotrochus bellulus* (Dunker, 1845): KI (unlocalised) (QVMAG)
- Phasianotrochus eximius* (Perry, 1811): Black Pt, Seal Bay (SGRDL); British Admiral Bch (TMAG); C Wickham (E) (SGRDL); City of Melbourne Bay (TMAG); Cowper Pt, Sea Elephant Bay (SGRDL); Currie Hbr (SGRDL, MRG); Disappointment Bay (SGRDL); Ettrick Bch (SGRDL); Fitzmaurice Bay (SGRDL, TMAG); Grassy Hbr (SGRDL); Gulchway, Stokes Pt (SGRDL); Halfmoon Bay (MHR); KI (unlocalised) (JFM, QVMAG, KIM, WLM); Lt Porky Bch (SGRDL); Naracoopa (SGRDL, TMAG, MHR, MRG); Pass R Bay (TMAG); Porky Bch (SGRDL); Seal Pt (SGRDL); S coast of KI (unlocalised) (TMAG); Surprise Bay (SGRDL); Victoria Cove (MRG)
- Phasianotrochus irisodontes* (Quoy & Gaimard, 1834): City of Melbourne Bay (SGRDL); KI (unlocalised) (JFM, QVMAG); Naracoopa (SGRDL, MHR)
- Phasianotrochus rutilus* (A. Adams, 1853): Naracoopa (MHR)
- Stomatella impertusa* (Burrow, 1815): Grassy Hbr (MRG); KI (unlocalised) (WLM); Lavinia Bch (SGRDL); Naracoopa (MRG); Pass R Bay (TMAG); Yellow Rock Bch (MHR)
- Colloniidae
- Argalista kingensis* May, 1923: Fitzmaurice Bay (TMAG); KI (unlocalised) (TMAG); Surprise Bay (MAM, WLM)
- Argalista rosea* (Tenison Woods, 1876): Elephant Shoal Reef (CJG); Halfmoon Bay (MHR); Lt Porky Bch (SGRDL)
- Turbinidae
- Bellastraea aurea* (Jonas, 1844): Black Pt, Seal Bay (SGRDL); British Admiral Bch (TMAG); C Wickham (E) (SGRDL); Catarauqui Pt (MHR); City of Melbourne Bay (SGRDL, TMAG); Cowper Pt, Sea Elephant Bay (SGRDL); Currie Hbr (SGRDL); Currie Hbr (MRG); Disappointment Bay (SGRDL); Ettrick Bch (SGRDL, TMAG, MRG); Fitzmaurice Bay (SGRDL, TMAG); Grassy (unlocalised) (TMAG); Grassy Hbr (SGRDL, MRG); Gulchway, Stokes Pt (SGRDL); Halfmoon Bay (TMAG, MHR); KI (unlocalised) (JFM, QVMAG, WLM); Lavinia Bch (SGRDL); Lt Porky Bch (SGRDL); Naracoopa (SGRDL, TMAG, MHR, MRG); Pass R Bay (TMAG); Porky Bch (SGRDL); Sandblow Bay, Grassy Hbr (SGRDL); Surprise Bay (SGRDL, MRG); Victoria Cove (MRG); W coast of KI (unlocalised) (TMAG); Yellow Rock Bch (SGRDL, TMAG, MHR)
- Bellastraea squamifera* (Koch, 1844): Cowper Pt, Sea Elephant Bay (SGRDL); Elephant Shoal Reef (CJG); KI (unlocalised) (KIM, WLM); Naracoopa (SGRDL, TMAG, MHR); Yellow Rock Bch (SGRDL, TMAG, MHR)
- Brookula nepeanensis* (Gatliff, 1906): Fitzmaurice Bay (SGRDL, TMAG)
- Cirsonella reflecta* (Laseron, 1954): Ettrick Bch (SGRDL); Fitzmaurice Bay (SGRDL)
- Cirsonella weldii* (Tenison Woods, 1876): Elephant Shoal Reef (CJG); Ettrick Bch (SGRDL); Fitzmaurice Bay (SGRDL, TMAG); KI (unlocalised) (JFM, WLM)
- Liotella annulata* (Tenison Woods, 1878): Colliers Bch (SGRDL); Ettrick Bch (SGRDL); Fitzmaurice Bay (SGRDL, TMAG)
- Liotella compacta* (Petterd, 1884): Fitzmaurice Bay (TMAG)
- Liotella johnstoni* (Beddome, 1883): Fitzmaurice Bay (SGRDL); Lt Porky Bch (SGRDL)
- Lissotesta contabulata* Tate, 1899: Ettrick Bch (SGRDL)
- Lissotesta micra* (Tenison Woods, 1876): Grassy Hbr (MRG)
- Lodderena minima* (Tenison Woods, 1876): Fitzmaurice Bay (TMAG); KI (unlocalised) (WLM)
- Lunella undulata* (Lightfoot, 1786): Black Pt, Seal Bay (SGRDL); Blowhole, Sea Elephant Bay (SGRDL); C Wickham (E) (SGRDL); City of Melbourne Bay (SGRDL, TMAG); Colliers

Bch (SGRDL); Cowper Pt, Sea Elephant Bay (SGRDL); Currie Hbr (SGRDL, MRG); Disappointment Bay (SGRDL); Ettrick Bch (SGRDL, TMAG); Fitzmaurice Bay (SGRDL, TMAG); Grassy Hbr (SGRDL, MRG); Gulchway, Stokes Pt (SGRDL); Halfmoon Bay (MHR); KI (unlocalised) (JFM, QVMAG, KIM, WLM); Lavinia Bch (SGRDL, TMAG, MHR); Lt Porky Bch (SGRDL); Naracoopa (SGRDL, TMAG, MHR, MRG); Pass R Bay (TMAG); Red Hut Pt (SGRDL); Sandblow Bay, Grassy Hbr (SGRDL); Seal Pt (SGRDL); Surprise Bay (SGRDL, MRG); Victoria Cove (MRG); Yellow Rock Bch (SGRDL, TMAG, MHR)

Putilla porcellana (Tate & May, 1900): Elephant Shoal Reef (CJG); Grassy Hbr (MRG)

Turbo gruneri Philippi, 1846: Cowper Pt, Sea Elephant Bay (SGRDL); Grassy Hbr (SGRDL); KI (unlocalised) (TMAG, QVMAG, WLM); Yellow Rock Bch (MHR, KIM)

Zalipais inscripta (Tate, 1899): Colliers Bch (SGRDL); Ettrick Bch (SGRDL); Fitzmaurice Bay (SGRDL, TMAG); KI (unlocalised) (WLM)

Neritidae

Nerita atramentosa Reeve, 1855: Black Pt, Seal Bay (SGRDL); C Wickham (E) (SGRDL); City of Melbourne Bay (SGRDL); Colliers Bch (SGRDL); Currie Hbr (SGRDL, MRG); Disappointment Bay (SGRDL); Ettrick Bch (SGRDL); Fitzmaurice Bay (SGRDL); Grassy Hbr (SGRDL, MRG); Gulchway, Stokes Pt (SGRDL); Halfmoon Bay (MHR); KI (unlocalised) (JFM, KIM, WLM); Lt Porky Bch (SGRDL); Naracoopa (SGRDL, MHR); Porky Bch (SGRDL); Red Hut Pt (SGRDL); Sandblow Bay, Grassy Hbr (SGRDL); Seal Pt (SGRDL); Surprise Bay (SGRDL); Victoria Cove (MRG)

Plesiotrochidae

Plesiotrochus monachus (Crosse & Fischer, 1864): Elephant Shoal Reef (CJG); Fitzmaurice Bay (SGRDL, TMAG); Halfmoon Bay (MHR); KI (unlocalised) (JFM, WLM); Naracoopa (SGRDL); W coast of KI (unlocalised) (TMAG)

Batillariidae

Velacumantus australis (Quoy & Gaimard, 1834): Naracoopa (MHR)

Zeacumantus diemenensis (Quoy & Gaimard, 1834): British Admiral Bch (TMAG); Catarauqui Pt (MHR); Colliers Bch (SGRDL); Currie Hbr (SGRDL); Ettrick Bch (SGRDL, TMAG); Fitzmaurice Bay (SGRDL, TMAG); Halfmoon Bay (MHR); KI (unlocalised) (QVMAG, WLM); Lavinia Bch (SGRDL, KIM); Lt Porky Bch (SGRDL); Naracoopa (SGRDL, MHR); Pass R Bay (TMAG); Sea Elephant Lagoon (MRG); W coast of KI (unlocalised) (TMAG)

Zeacumantus estuarinus (Tate, 1893): Sea Elephant Lagoon (MRG)

Cerithiidae

Cacozeliana granaria Kiener, 1842: C Wickham (E) (SGRDL); Colliers Bch (SGRDL); Elephant Shoal Reef (CJG); Fitzmaurice Bay (SGRDL, TMAG); Grassy Hbr (SGRDL); Halfmoon Bay (TMAG, MHR); KI (unlocalised) (JFM); Naracoopa (TMAG); Pass R Bay (TMAG); Victoria Cove (MRG); W coast of KI (unlocalised) (TMAG)

Dialidae

Diala megapicalis Ponder & de Keyser, 1992: Ettrick Bch (SGRDL, MRG)

Diala suturalis (A. Adams, 1853): Currie Hbr (SGRDL); Ettrick Bch (SGRDL, MRG); Fitzmaurice Bay (SGRDL, TMAG); Halfmoon Bay (MHR); KI (unlocalised) (JFM, WLM); Lt Porky Bch (SGRDL); Pass R Bay (TMAG)

Litiopidae

Alaba monile (A. Adams, 1862): Ettrick Bch (SGRDL)

Alaba pulchra A. Adams, 1862: Halfmoon Bay (TMAG, MHR)

Siliquariidae

Pyxipoma weldii (Tenison Woods, 1875): Black Pt, Seal Bay (SGRDL); Fitzmaurice Bay (SGRDL); Grassy Hbr (SGRDL); Naracoopa (SGRDL); Seal Pt (SGRDL)

Stephopoma cf. *nucleogranosum* Verco, 1904: Fitzmaurice Bay (SGRDL)

Tenagodus australis (Quoy & Gaimard, 1834): Elephant Shoal Reef (CJG)

Turritellidae

Colpospira australis (Lamarck, 1822): Colliers Bch (SGRDL); KI (unlocalised) (QVMAG); Lavinia Bch (SGRDL); Naracoopa (SGRDL)

Gazameda gunnii (Reeve, 1848): KI (unlocalised) (QVMAG, KIM); Lavinia Bch (SGRDL, MHR); Naracoopa (SGRDL, TMAG, MHR); Yellow Rock Bch (SGRDL, TMAG, MHR)

Gazameda iredalei Finlay, 1927: KI (unlocalised) (QVMAG, MAM)

Gazameda tasmanica (Reeve, 1849): KI (unlocalised) (QVMAG)

Maoricolpus roseus (Quoy & Gaimard, 1834): Disappointment Bay (SGRDL); Grassy Hbr (SGRDL); Naracoopa (SGRDL)

Calyptraeidae

Maoricrypta immersa (Angas, 1865): Bass Strait NE of KI, scallop survey site 08 (TMAG); Colliers Bch (SGRDL); Lavinia Bch (SGRDL); Naracoopa (SGRDL); Yellow Rock Bch (SGRDL)

Sigapatella calyptraeformis (Lamarck, 1822): Blowhole, Sea Elephant Bay (SGRDL); Colliers Bch (SGRDL); Fitzmaurice Bay (TMAG); KI (unlocalised) (QVMAG); Lavinia Bch (SGRDL, TMAG, MHR); Naracoopa (SGRDL, TMAG, MHR); Yellow Rock Bch (SGRDL, TMAG, MHR)

Sigapatella hedleyi (E. A. Smith, 1915): Lavinia Bch (SGRDL)

Cingulopsidae

Eatonina condita Ponder & Yoo, 1980: Fitzmaurice Bay (TMAG); Pass R Bay (TMAG)

Eatoniellidae

Crassitiella erratica (May, 1913): Elephant Shoal Reef (CJG); Fitzmaurice Bay (SGRDL); Halfmoon Bay (TMAG); Surprise Bay (MRG)

Crassitiella flammea (Frauenfeld, 1867): Elephant Shoal Reef (CJG)

Eatoniella atrella Ponder & Yoo, 1978: Fitzmaurice Bay (SGRDL, TMAG); Pass R Bay (TMAG)

Eatoniella depressa Ponder & Yoo, 1978: Fitzmaurice Bay (SGRDL)

Eatoniella fulva Ponder & Yoo, 1978: Pass R Bay (TMAG)

Eatoniella galbinia (Laseron, 1950): Fitzmaurice Bay (SGRDL, TMAG); Halfmoon Bay (TMAG, MHR)

Eatoniella melanochroma (Tate, 1899): Colliers Bch (SGRDL); Currie Hbr (SGRDL, MRG); Ettrick Bch (SGRDL, MRG); Fitzmaurice Bay (SGRDL, TMAG); Grassy Hbr (MRG); Halfmoon Bay (TMAG, MHR); KI (unlocalised) (JFM, WLM); Lt Porky Bch (SGRDL); Naracoopa (MRG); Pass R Bay (TMAG); Seal Pt (SGRDL); Surprise Bay (MRG)

Eatoniella puniceolinea Ponder & Yoo, 1978: Fitzmaurice Bay (SGRDL)

Eatoniella shepherdii Ponder & Yoo, 1978: Fitzmaurice Bay (TMAG)

Cypraeidae

Notocypraea angustata (Gmelin, 1791): Black Pt, Seal Bay (SGRDL); Blowhole, Sea Elephant Bay (SGRDL); British Admiral Bch (TMAG); C Wickham (E) (SGRDL); City of Melbourne Bay (SGRDL); Cowper Pt, Sea Elephant Bay (SGRDL); Currie Hbr (SGRDL); Disappointment Bay (SGRDL); Fitzmaurice Bay (SGRDL, TMAG); Grassy Hbr (SGRDL); Halfmoon Bay (MHR); KI (unlocalised) (JFM, QVMAG, KIM, WLM); Lavinia Bch (SGRDL); Lt Porky Bch (SGRDL); Naracoopa (SGRDL, TMAG, MHR); Pass R Bay (TMAG); Red Hut Pt (SGRDL); Sandblow Bay, Grassy Hbr (SGRDL); Seal Pt (SGRDL); S coast of KI (unlocalised) (TMAG); Unlucky Bay

- (KJB); Victoria Cove (MRG); W coast of KI (unlocalised) (TMAG); Yellow Rock Bch (TMAG, MHR)
- Notocypraea comptoni* (Gray, 1847): Black Pt, Seal Bay (SGRDL); C Wickham (E) (SGRDL); Fitzmaurice Bay (TMAG); Grassy Hbr (SGRDL); Halfmoon Bay (MHR); KI (unlocalised) (QVMAG, KIM); Lt Porky Bch (SGRDL); Naracoopa (SGRDL, TMAG, MHR); Pass R Bay (TMAG); Sandblow Bay, Grassy Hbr (SGRDL); S coast of KI (unlocalised) (TMAG); Unlucky Bay (KJB); Victoria Cove (MRG); W coast of KI (unlocalised) (TMAG); Yellow Rock Bch (TMAG, MHR)
- Notocypraea declivis* (Sowerby, 1870): Black Pt, Seal Bay (SGRDL); British Admiral Bch (TMAG); C Wickham (E) (SGRDL); City of Melbourne Bay (SGRDL); Colliers Bch (SGRDL); Cowper Pt, Sea Elephant Bay (SGRDL); Currie Hbr (SGRDL); Disappointment Bay (SGRDL); Ettrick Bch (SGRDL); Grassy Hbr (SGRDL); Halfmoon Bay (MHR); KI (unlocalised) (QVMAG); Lavinia Bch (SGRDL); Lt Porky Bch (SGRDL); Naracoopa (SGRDL, TMAG, KIM); Porky Bch (SGRDL); Sandblow Bay, Grassy Hbr (SGRDL); S coast of KI (unlocalised) (TMAG); Surprise Bay (SGRDL)
- Notocypraea piperita* (Gray, 1825): Black Pt, Seal Bay (SGRDL); Currie Hbr (SGRDL); Grassy Hbr (SGRDL); KI (unlocalised) (JFM, QVMAG); Naracoopa (SGRDL, MHR, KIM, MRG); Red Hut Pt (SGRDL); Seal Pt (SGRDL); Surprise Bay (SGRDL)
- Notocypraea subcarnea* (Beddome, 1896): Black Pt, Seal Bay (SGRDL); Seal Pt (SGRDL)
- Umbilina hesitata* (Iredale, 1916): Cowper Pt, Sea Elephant Bay (SGRDL); KI (offshore, unlocalised) (KIM)
- Epitoniidae**
- Cirsotrema translucidum* (Gatliff, 1906): Elephant Shoal Reef (CJG)
- Epitonium jukesianum* (Forbes, 1852): Colliers Bch (SGRDL); Fitzmaurice Bay (SGRDL, TMAG); KI (unlocalised) (JFM, WLM); Lt Porky Bch (SGRDL); Naracoopa (SGRDL, MRG); Pass R Bay (TMAG); Seal Pt (SGRDL)
- Epitonium minorum* (Iredale, 1936): Black Pt, Seal Bay (SGRDL); Fitzmaurice Bay (TMAG); KI (unlocalised) (JFM); Seal Pt (SGRDL); Yellow Rock Bch (SGRDL)
- Opalia australis* (Lamarck, 1822): Black Pt, Seal Bay (SGRDL); British Admiral Bch (TMAG); C Wickham (E) (SGRDL); Fitzmaurice Bay (SGRDL, TMAG); Grassy Hbr (SGRDL); Halfmoon Bay (MHR); KI (unlocalised) (WLM); Lt Porky Bch (SGRDL); Naracoopa (SGRDL, TMAG, MHR); Pass R Bay (TMAG); Red Hut Pt (SGRDL); Seal Pt (SGRDL); S coast of KI (unlocalised) (TMAG); W coast of KI (unlocalised) (TMAG); Yellow Rock Bch (TMAG, MHR)
- Opalia granosa* (Quoy & Gaimard, 1834): Black Pt, Seal Bay (SGRDL); C Wickham (E) (SGRDL); Ettrick Bch (SGRDL); Fitzmaurice Bay (SGRDL, TMAG); Grassy Hbr (SGRDL); KI (unlocalised) (JFM); Lt Porky Bch (SGRDL); Naracoopa (SGRDL, TMAG, KIM, MHR); Pass R Bay (TMAG); Red Hut Pt (SGRDL); Seal Pt (SGRDL)
- Janthinidae**
- Janthina janthina* (Linnaeus, 1758): Fitzmaurice Bay (SGRDL, TMAG)
- Eulimidae**
- Eulima petterdi* (Beddome, 1882): Colliers Bch (SGRDL); Fitzmaurice Bay (SGRDL, TMAG); Grassy Hbr (MRG); KI (unlocalised) (WLM); Seal Pt (SGRDL)
- Eulima tenisoni* (Tryon, 1886): Currie Hbr (SGRDL); Fitzmaurice Bay (SGRDL, TMAG); KI (unlocalised) (WLM); Seal Pt (SGRDL)
- Fusceulima perexigua* (Tate & May, 1900): Fitzmaurice Bay (SGRDL)
- Leiostraca kilcundae* (Gatliff & Gabriel, 1914): Fitzmaurice Bay (SGRDL; TMAG)
- Melanella augur* (Angas, 1865): C Wickham (E) (SGRDL); Colliers Bch (SGRDL); Fitzmaurice Bay (SGRDL, TMAG); Grassy Hbr (SGRDL); KI (unlocalised) (JFM, QVMAG, WLM); Naracoopa (SGRDL, MRG); Pass R Bay (TMAG)
- Scalenostoma lodderae* Petterd, 1884: Naracoopa (SGRDL); Sandblow Bay (SGRDL)
- Vitreolina commensalis* (Tate, 1898): Elephant Shoal Reef (CJG)
- Littorinidae**
- Afrolittorina praetermissa* (May, 1909): British Admiral Bch (TMAG); C Wickham (E) (SGRDL); Currie Hbr (SGRDL, MRG); Ettrick Bch (SGRDL); Fitzmaurice Bay (SGRDL, TMAG); Gulchway, Stokes Pt (SGRDL); Halfmoon Bay (TMAG, MHR); KI (unlocalised) (TMAG, WLM); Lt Porky Bch (SGRDL); Naracoopa (SGRDL); Pass R Bay (TMAG); Porky Bch (SGRDL); Red Hut Pt (SGRDL); Sandblow Bay, Grassy Hbr (SGRDL); Surprise Bay (SGRDL); Victoria Cove (MRG); W coast of KI (unlocalised) (TMAG)
- Austrolittorina unifasciata* (Gray, 1826): C Wickham (E) (SGRDL); Cataraqui Pt (MHR); Cooper Bluff (MRG); Currie Hbr (SGRDL, MRG); Ettrick Bch (SGRDL); Fitzmaurice Bay (SGRDL, TMAG); Gulchway, Stokes Pt (SGRDL); KI (unlocalised) (JFM, TMAG, QVMAG, WLM); Lt Porky Bch (SGRDL); Naracoopa (SGRDL); Porky Bch (SGRDL); Red Hut Pt (SGRDL); Sandblow Bay, Grassy Hbr (SGRDL); Surprise Bay (SGRDL)
- Bembicium melanostoma* (Gmelin, 1791): Black Pt, Seal Bay (SGRDL); British Admiral Bch (TMAG); Currie Hbr (SGRDL); Ettrick Bch (SGRDL, TMAG); Fitzmaurice Bay (SGRDL); Grassy Hbr (SGRDL); Halfmoon Bay (MHR); KI (unlocalised) (JFM, WLM); Lavinia Bch (SGRDL); Pass R Bay (TMAG); Porky Bch (SGRDL); Sea Elephant Lagoon (MRG); Surprise Bay (SGRDL); W coast of KI (unlocalised) (TMAG)
- Bembicium nanum* (Lamarck, 1822): Blowhole, Sea Elephant Bay (SGRDL); C Wickham (E) (SGRDL); Cooper Bluff (MRG); Disappointment Bay (SGRDL); E coast of KI (unlocalised) (TMAG); Grassy (unlocalised) (MHR); Grassy Hbr (SGRDL, MRG); KI (unlocalised) (TMAG); Naracoopa (SGRDL, TMAG, MHR, KIM); Porky Bch (SGRDL); Surprise Bay (MRG); Victoria Cove (TMAG, MRG); Yellow Rock Bch (MHR)
- Laevilitorina mariae* (Tenison Woods, 1876): Colliers Bch (SGRDL); Ettrick Bch (SGRDL); Fitzmaurice Bay (TMAG); KI (unlocalised) (TMAG); Lt Porky Bch (SGRDL); Naracoopa (TMAG, MHR); Pass R Bay (TMAG)
- Macquariella kingensis* (May, 1924): Colliers Bch (SGRDL); Currie Hbr (SGRDL, TMAG, MRG, WLM); Ettrick Bch (SGRDL); Fitzmaurice Bay (SGRDL, TMAG); Halfmoon Bay (TMAG, MHR); Lt Porky Bch (SGRDL); Naracoopa (MRG); Pass R Bay (TMAG); Seal Pt (SGRDL)
- Risellopsis mutabilis* May, 1909: KI (unlocalised) (WLM)
- Rufolacuna brunienensis* (Beddome, 1883): Colliers Bch (SGRDL); Fitzmaurice Bay (SGRDL, TMAG); Lt Porky Bch (SGRDL)
- Naticidae**
- Conuber conicus* (Lamarck, 1822): KI (unlocalised) (QVMAG, KIM); Naracoopa (SGRDL, TMAG, MHR); Yellow Rock Bch (TMAG, MHR)
- Conuber controversus* (Pritchard & Gatliff, 1913): Naracoopa (SGRDL)
- Eunaticina umbilicata* (Quoy & Gaimard, 1833): Black Pt, Seal Bay (SGRDL); British Admiral Bch (TMAG); C Wickham (E) (SGRDL); City of Melbourne Bay (SGRDL); Currie Hbr (SGRDL); Ettrick Bch (SGRDL, TMAG); Fitzmaurice Bay (SGRDL, TMAG); Halfmoon Bay (MHR); KI (unlocalised) (JFM, QVMAG, KIM, WLM); Lavinia Bch (SGRDL); Lt Porky Bch (SGRDL); Naracoopa (SGRDL, MHR); Pass R Bay (TMAG); Surprise Bay (SGRDL); W coast of KI (unlocalised) (TMAG); Yellow Rock Bch (MHR)
- Naticarius subcostatus* (Tenison Woods, 1878): Elephant Shoal Reef (CJG)
- Neverita aulacoglossa* (Pilsbry & Vanatta, 1908): Cowper Pt, Sea Elephant Bay (SGRDL); Fitzmaurice Bay (TMAG);

- KI (unlocalised) (QVMAG, KIM); Lavinia Bch (SGRDL); Naracoopa (SGRDL); Yellow Rock Bch (SGRDL, TMAG, MHR)
- Simum zonale* (Quoy & Gaimard, 1833): Naracoopa (MHR)
- Tanea sagittata* (Menke, 1843): KI (unlocalised) (QVMAG)
- Pterotracheidae
- Pterotrachea kingicola* van Gooch, 1942: KI (unlocalised) (QVMAG)
- Anabathridae
- Amphithalamus incidatus* (Frauenfeld, 1867): KI (unlocalised) (WLM)
- Amphithalamus 'obesus'* H. Adams, 1866 (not true *A. obesus* according to LS): Colliers Bch (SGRDL); Currie Hbr (SGRDL); Ettrick Bch (SGRDL); Fitzmaurice Bay (TMAG)
- Amphithalamus triangulus* (May, 1915): Elephant Shoal Reef (CJG)
- Anabathron contabulatum* (Frauenfeld, 1867): Ettrick Bch (SGRDL); Fitzmaurice Bay (SGRDL, TMAG); KI (unlocalised) (WLM); Lt Porky Bch (SGRDL); Seal Pt (SGRDL)
- Anabathron lene* Hedley, 1918: Fitzmaurice Bay (SGRDL); Lt Porky Bch (SGRDL)
- Anabathron luteofuscus* May, 1920: Fitzmaurice Bay (SGRDL, TMAG)
- Badepigrus pupoides* (H. Adams, 1865): Colliers Bch (SGRDL); Ettrick Bch (SGRDL, MRG); Fitzmaurice Bay (TMAG); Halfmoon Bay (TMAG, MHR)
- Microdryas iravadioides* (Gatliff & Gabriel, 1913): Fitzmaurice Bay (TMAG)
- Pisinna approxima* (Petterd, 1884): Colliers Bch (SGRDL); Fitzmaurice Bay (TMAG); Grassy Hbr (MRG); Halfmoon Bay (TMAG, MHR); KI (unlocalised) (JFM, TMAG, WLM); Pass R Bay (TMAG)
- Pisinna bicolor* (Petterd, 1884): Elephant Shoal Reef (CJG)
- Pisinna circumlabra* Ponder & Yoo, 1976: Fitzmaurice Bay (TMAG); Halfmoon Bay (TMAG, MHR)
- Pisinna costata* (Hedley, 1911): Elephant Shoal Reef (CJG)
- Pisinna dubitabilis* (Tate, 1899): Colliers Bch (SGRDL); Fitzmaurice Bay (TMAG); Halfmoon Bay (TMAG)
- Pisinna frenchiensis* (Gatliff & Gabriel, 1908): Colliers Bch (SGRDL); Elephant Shoal Reef (CJG); Halfmoon Bay (TMAG, MHR)
- Pisinna kershawi* (Tenison Woods, 1878): Elephant Shoal Reef (CJG); Fitzmaurice Bay (TMAG); Halfmoon Bay (TMAG, MHR)
- Pisinna megastoma* Ponder & Yoo, 1976: Fitzmaurice Bay (TMAG); Pass R Bay (TMAG)
- Pisinna nitida* Ponder & Yoo, 1976: Fitzmaurice Bay (TMAG)
- Pisinna olivacea* (Frauenfeld, 1867): Fitzmaurice Bay (SGRDL)
- Pisinna* sp. nov.: Lt Porky Bch (SGRDL, det. LS)
- Pisinna tumida* (Tenison Woods, 1876): Elephant Shoal Reef (CJG); Lt Porky Bch (SGRDL)
- Pisinna varicifera relata* (Cotton, 1944): Fitzmaurice Bay (TMAG); Halfmoon Bay (TMAG, MHR)
- Assimineidae
- Cryptassininea buccinoides* (Quoy & Gaimard, 1834): Sea Elephant Lagoon (MRG)
- Caecidae
- Caecum amputatum* Hedley, 1894: Fitzmaurice Bay (SGRDL)
- Elachisnidae
- Dolicrossea labiata* (Tenison Woods, 1876): Elephant Shoal Reef (CJG)
- Hydrobiidae
- Ascorbis tasmanica* (Martens, 1858): Fitzmaurice Bay (TMAG)
- Pomatiopsidae
- Coxiella striata* (Reeve, 1842): Cape Wickham (unlocalised) (SGRDL); L. Flannigan (QVMAG)
- Rissoidae
- Alvania fasciata* (Tenison Woods, 1876): Colliers Bch (SGRDL); Currie Hbr (SGRDL); Elephant Shoal Reef (CJG); Ettrick Bch (SGRDL); Fitzmaurice Bay (SGRDL, TMAG); KI (unlocalised) (JFM, WLM); Halfmoon Bay (TMAG, MHR); Lt Porky Bch (SGRDL); Seal Pt (SGRDL)
- Alvania strangei* (Brazier, 1894): Catarauqui Pt (MHR); Currie Hbr (SGRDL); Ettrick Bch (SGRDL); Fitzmaurice Bay (SGRDL, TMAG); KI (unlocalised) (WLM); Halfmoon Bay (TMAG, MHR); Lt Porky Bch (SGRDL); Pass R Bay (TMAG); Seal Pt (SGRDL)
- Lironoba australis* (Tenison Woods, 1877): Catarauqui Pt (MHR); Colliers Bch (SGRDL); Currie Hbr (SGRDL); Ettrick Bch (SGRDL); Fitzmaurice Bay (SGRDL, TMAG); Halfmoon Bay (TMAG, MHR); KI (unlocalised) (JFM, TMAG, WLM); Lt Porky Bch (SGRDL); Naracoopa (TMAG, MHR, MRG); Pass R Bay (TMAG); Seal Pt (SGRDL)
- Lironoba layardi* (Petterd, 1884): Fitzmaurice Bay (TMAG)
- Lironoba unilirata* (Tenison Woods, 1878): Colliers Bch (SGRDL); KI (unlocalised) (WLM); Seal Pt (SGRDL)
- Merelina cancellata* Crioscino & Ponder, 2011: Colliers Bch (SGRDL); Currie Hbr (SGRDL); Elephant Shoal Reef (CJG); Fitzmaurice Bay (SGRDL); KI (unlocalised) (JFM, WLM); Seal Pt (SGRDL)
- Merelina hirta* Crioscino & Ponder, 2011: Halfmoon Bay (MHR)
- Merelina* sp. nov.: Fitzmaurice Bay (SGRDL, preliminary det. LS)
- Onoba multilirata* (May, 1915): Colliers Bch (SGRDL)
- Onoba supracostata* (May, 1919): Colliers Bch (SGRDL); Fitzmaurice Bay (SGRDL, TMAG); KI (unlocalised) (WLM); Lt Porky Bch (SGRDL)
- Powellisetia similima* (May, 1915): Fitzmaurice Bay (SGRDL)
- Pusillina discrepans* (Tate & May, 1900): Elephant Shoal Reef (CJG)
- Rissoina angasi* Pease, 1872: Currie Hbr (SGRDL); Fitzmaurice Bay (TMAG); KI (unlocalised) (WLM); Seal Pt (SGRDL)
- Rissoina elegantula* Angas, 1880: Colliers Bch (SGRDL); Currie Hbr (SGRDL); Elephant Shoal Reef (CJG); Fitzmaurice Bay (SGRDL, TMAG); Lt Porky Bch (SGRDL); Seal Pt (SGRDL); Surprise Bay (MRG)
- Rissoina fasciata* (A. Adams, 1853): C Wickham (E) (SGRDL); Colliers Bch (SGRDL); Currie Hbr (SGRDL); Elephant Shoal Reef (CJG); Ettrick Bch (SGRDL); Fitzmaurice Bay (SGRDL); Grassy Hbr (SGRDL); Halfmoon Bay (TMAG, MHR); KI (unlocalised) (JFM, WLM); Lt Porky Bch (SGRDL); Pass R Bay (TMAG); Porky Bch (SGRDL); Red Hut Pt (SGRDL); Seal Pt (SGRDL); Surprise Bay (SGRDL); W coast of KI (unlocalised) (TMAG)
- Rissoina gertrudis* Tenison Woods, 1876: Fitzmaurice Bay (SGRDL, TMAG); Halfmoon Bay (TMAG); KI (unlocalised) (TMAG); Lt Porky Bch (SGRDL)
- Rissoina rhyllensis* Gatliff & Gabriel, 1908: Elephant Shoal Reef (CJG); Fitzmaurice Bay (TMAG)
- Rissoina vincentiana* Cotton, 1952: Currie Hbr (MRG); Ettrick Bch (MRG); Grassy Hbr (MRG)
- Tornidae
- Circulus harriettae* (Petterd, 1884): Colliers Bch (SGRDL); Elephant Shoal Reef (CJG); Fitzmaurice Bay (TMAG)
- Truncatellidae
- Truncatella scalarina* (Cox, 1867): KI (unlocalised) (TMAG)
- Ranellidae
- Argobuccinum pustulosum* (Lightfoot, 1786): Boulder Pt (KIM); C Wickham (E) (SGRDL); Disappointment Bay (SGRDL); Lavinia Bch (MHR); Seal Pt (SGRDL)
- Cabestana spengleri* (Perry, 1811): Black Pt, Seal Bay (SGRDL); City of Melbourne Bay (SGRDL); KI (unlocalised) (KIM, WLM);

- Lavinia Bch (SGRDL); Naracoopa (SGRDL, MHR, MRG); Sandblow Bay, Grassy Hbr (SGRDL); Seal Pt (SGRDL); Yellow Rock Bch (SGRDL, TMAG, MHR)
- Cabestana tabulata* (Menke, 1843): Black Pt, Seal Bay (SGRDL); C Wickham (E) (SGRDL); City of Melbourne Bay (SGRDL); Cowper Pt, Sea Elephant Bay (SGRDL); Disappointment Bay (SGRDL); Fitzmaurice Bay (SGRDL, TMAG); Grassy Hbr (SGRDL); KI (unlocalised) (QVMAG, KIM); Lavinia Bch (SGRDL); Lt Porky Bch (SGRDL); Naracoopa (SGRDL, TMAG, MHR); Red Hut Pt (SGRDL); Sandblow Bay, Grassy Hbr (SGRDL); Seal Pt (SGRDL); S coast of KI (unlocalised) (TMAG); Surprise Bay (SGRDL); Yellow Rock Bch (TMAG, MHR)
- Charonia rubicunda* (Perry, 1811): KI (offshore, unlocalised) (KIM)
- Monoplex parthenopeum* (von Salis, 1793): KI (offshore, unlocalised) (KIM); KI (unlocalised) (APL); Naracoopa (SGRDL)
- Ranella australasia* (Perry, 1811): KI (offshore, unlocalised) (KIM)
- Sassia bassi* (Angas, 1869): Black Pt, Seal Bay (SGRDL); City of Melbourne Bay (SGRDL); KI (unlocalised) (KIM); Lavinia Bch (SGRDL); Naracoopa (SGRDL, MHR); Red Hut Pt (SGRDL); Seal Pt (SGRDL); Yellow Rock Bch (SGRDL, TMAG, MHR)
- Sassia eburnea* (Reeve, 1844): Black Pt, Seal Bay (SGRDL); British Admiral Bch (TMAG, KIM); C Wickham (E) (SGRDL); Catarauqui Pt (MHR); Currie Hbr (SGRDL, MRG); Ettrick Bch (SGRDL); Fitzmaurice Bay (SGRDL, TMAG); Grassy Hbr (SGRDL); Gulchway, Stokes Pt (SGRDL); Halfmoon Bay (MHR); KI (unlocalised) (QVMAG, WLM); Lt Porky Bch (SGRDL); Naracoopa (SGRDL, TMAG, MHR); Pass R Bay (TMAG); Porky Bch (SGRDL); Red Hut Pt (SGRDL); Seal Pt (SGRDL); S coast of KI (unlocalised) (TMAG); Surprise Bay (SGRDL, MRG); W coast of KI (unlocalised) (TMAG)
- Sassia epitrema* (Tenison Woods, 1877): Naracoopa (SGRDL, KIM)
- Sassia subdistorta* (Lamarck, 1822): Bass Strait NE of KI, scallop survey site 05 (TMAG); Black Pt, Seal Bay (SGRDL); C Wickham (E) (SGRDL); City of Melbourne Bay (SGRDL); Cowper Pt, Sea Elephant Bay (SGRDL); Disappointment Bay (SGRDL); Grassy Hbr (SGRDL); KI (unlocalised) (QVMAG, KIM, WLM); Lavinia Bch (SGRDL); Naracoopa (SGRDL, TMAG, MHR); Seal Pt (SGRDL); S coast of KI (unlocalised) (TMAG); Yellow Rock Bch (SGRDL, TMAG, MHR)
- Sassia verrucosa* (Reeve, 1844): Black Pt, Seal Bay (SGRDL); British Admiral Bch (TMAG); C Wickham (E) (SGRDL); City of Melbourne Bay (SGRDL); Currie Hbr (SGRDL, MRG); Disappointment Bay (SGRDL); Elephant Shoal Reef (CJG); Ettrick Bch (SGRDL, TMAG); Fitzmaurice Bay (SGRDL, TMAG); Grassy (unlocalised) (TMAG); Grassy Hbr (SGRDL); Gulchway, Stokes Pt (SGRDL); Halfmoon Bay (MHR); KI (unlocalised) (JFM, QVMAG, WLM); Lt Porky Bch (SGRDL); Naracoopa (SGRDL, TMAG, MHR, KIM, MRG); Pass R Bay (TMAG); Porky Bch (SGRDL); Red Hut Pt (SGRDL); Seal Pt (SGRDL); S coast of KI (unlocalised) (TMAG); Surprise Bay (SGRDL); Victoria Cove (MRG)
- Tonnidae**
- Semicassis pyrum* (Lamarck, 1822): Black Pt, Seal Bay (SGRDL); Colliers Bch (SGRDL); Cowper Pt, Sea Elephant Bay (SGRDL); KI (offshore, unlocalised) (KIM); Lavinia Bch (SGRDL, MHR); Lt Porky Bch (SGRDL); Naracoopa (MHR); Yellow Rock Bch (SGRDL, MHR)
- Semicassis semigranosa* (Lamarck, 1822): Colliers Bch (SGRDL); Cowper Pt, Sea Elephant Bay (SGRDL); KI (unlocalised) (JFM, QVMAG, KIM); Lavinia Bch (SGRDL); Naracoopa (SGRDL, TMAG); Yellow Rock Bch (SGRDL, MHR)
- Cerithiopsidae**
- Prolixodens cesticus* (Hedley, 1906): Fitzmaurice Bay (TMAG)
- Prolixodens dannevigii* (Hedley, 1911): Elephant Shoal Reef (CJG)
- Seila albosutura* (Tenison Woods, 1877): C Wickham (E) (SGRDL); Currie Hbr (SGRDL); Fitzmaurice Bay (SGRDL, TMAG); KI (unlocalised) (JFM, QVMAG, WLM); Lt Porky Bch (SGRDL)
- Specula regina* Cotton, 1951: Fitzmaurice Bay (SGRDL, det. LS)
- Specula turbonilloides* (Tenison Woods, 1879): Halfmoon Bay (TMAG, MHR); KI (unlocalised) (WLM); Pass R Bay (TMAG)
- Newtoniellidae**
- Ataxocerithium serotinum* (A. Adams, 1855): Black Pt, Seal Bay (SGRDL); C Wickham (E) (SGRDL); Elephant Shoal Reef (CJG); KI (unlocalised) (JFM, QVMAG); Lt Porky Bch (SGRDL); Naracoopa (SGRDL); Pass R Bay (TMAG); Seal Pt (SGRDL)
- Socienna angasi* (Semper, 1874): Elephant Shoal Reef (CJG)
- Socienna trisculpta* (May, 1913): Fitzmaurice Bay (SGRDL, TMAG); Halfmoon Bay (TMAG, MHR)
- Zaclys semilaevis* (Tenison Woods, 1877): Fitzmaurice Bay (TMAG)
- Triphoridae**
- Aclophoropsis festiva* (A. Adams, 1851): C Wickham (E) (SGRDL); Elephant Shoal Reef (CJG); Fitzmaurice Bay (TMAG); Pass R Bay (TMAG)
- Brucetriphora granifera* (Brazier, 1894): C Wickham (E) (SGRDL); Colliers Bch (SGRDL); Elephant Shoal Reef (CJG); Fitzmaurice Bay (TMAG); Ettrick Bch (SGRDL); Halfmoon Bay (TMAG, MHR); KI (unlocalised) (TMAG); Pass R Bay (TMAG)
- Eutriphora armillata* (Verco, 1909): Fitzmaurice Bay (TMAG, MHR)
- Eutriphora cana* (Verco, 1909): Pass R Bay (TMAG)
- Hedleytriphora basimacula* Marshall, 1983: Elephant Shoal Reef (CJG)
- Hedleytriphora fasciata* (Tenison Woods, 1879): Colliers Bch (SGRDL); Fitzmaurice Bay (TMAG); Halfmoon Bay (TMAG, MHR); KI (unlocalised) (JFM)
- Hedleytriphora scitula* (A. Adams, 1851): Elephant Shoal Reef (CJG); Fitzmaurice Bay (TMAG); Pass R Bay (TMAG)
- Isotriphora amethystina* Marshall, 1983: Fitzmaurice Bay (SGRDL, TMAG); Halfmoon Bay (TMAG)
- Isotriphora tasmanica* (Tenison Woods, 1875): Colliers Bch (SGRDL); Elephant Shoal Reef (CJG)
- Monophorus angasi* (Crosse & Fischer, 1865): Elephant Shoal Reef (CJG); Fitzmaurice Bay (TMAG); Halfmoon Bay (MHR); KI (unlocalised) (WLM)
- Monophorus nigrofuscus* (A. Adams, 1851): Elephant Shoal Reef (CJG)
- Obesula mamillata* (Verco, 1909): Fitzmaurice Bay (TMAG)
- Vanikoridae**
- Naricava vincentiana* (Angas, 1880): Naracoopa (MRG); Seal Pt (SGRDL)
- Capulidae**
- Capulus danieli* (Crosse, 1858): KI (unlocalised) (JFM)
- Hipponicidae**
- Antisabia foliacea* (Quoy & Gaimard, 1835): Black Pt, Seal Bay (SGRDL); Blowhole, Sea Elephant Bay (SGRDL); C Wickham (E) (SGRDL); Catarauqui Pt (MHR); City of Melbourne Bay (SGRDL); Colliers Bch (SGRDL); Currie Hbr (SGRDL); Disappointment Bay (SGRDL); Elephant Shoal Reef (CJG); Ettrick Bch (SGRDL); Fitzmaurice Bay (SGRDL, TMAG); Grassy (unlocalised) (MHR); Grassy Hbr (SGRDL); Halfmoon Bay (TMAG, MHR); KI (unlocalised) (JFM, WLM); Lavinia Bch (SGRDL); Lt Porky Bch (SGRDL); Naracoopa (SGRDL, TMAG, MHR); Pass R Bay (TMAG); Red Hut Pt (SGRDL); Sandblow Bay, Grassy Hbr (SGRDL); Seal Pt (SGRDL); Surprise Bay (SGRDL); W coast of KI (unlocalised) (TMAG)
- Hipponix australis* (Lamarck, 1819): Bass Strait NE of KI, scallop survey site 04 (TMAG); Bass Strait NE of KI, scallop survey site 08 (TMAG); Bass Strait NE of KI, scallop survey site 11 (TMAG); Black Pt, Seal Bay (SGRDL); British Admiral Bch (TMAG); C Wickham (E) (SGRDL); Cowper Pt, Sea

Elephant Bay (SGRDL); Currie Hbr (SGRDL, MRG); Disappointment Bay (SGRDL); E coast of KI (unlocalised) (TMAG); Ettrick Bch (SGRDL); Fitzmaurice Bay (SGRDL, TMAG); Grassy (unlocalised) (TMAG, MHR); Grassy Hbr (SGRDL); Halfmoon Bay (TMAG, MHR); KI (unlocalised) (JFM, TMAG, WLM); Lavinia Bch (SGRDL); Lt Porky Bch (SGRDL); Naracoopa (SGRDL, TMAG, MHR, MRG); Pass R Bay (TMAG); Porky Bch (SGRDL); Sandblow Bay, Grassy Hbr (SGRDL); Seal Pt (SGRDL); Surprise Bay (SGRDL, MRG); W coast of KI (unlocalised) (TMAG); Yellow Rock Bch (SGRDL, TMAG, MHR)

Eratoidae

Proterato lachryma (Sowerby, 1832): Fitzmaurice Bay (TMAG, KIM); Grassy Hbr (SGRDL); Seal Pt (SGRDL)

Triviidae

Ellatrinia merces (Iredale, 1924): Black Pt, Seal Bay (SGRDL); C Wickham (E) (SGRDL); Colliers Bch (SGRDL); Elephant Shoal Reef (CJG); Fitzmaurice Bay (TMAG); Grassy Hbr (SGRDL, MRG); Halfmoon Bay (MHR); KI (unlocalised) (KIM, WLM); Lavinia Bch (SGRDL); Naracoopa (SGRDL, TMAG, MHR); Porky Bch (SGRDL); Seal Pt (SGRDL); W coast of KI (unlocalised) (TMAG)

Velutinidae

Lamellaria ophione Gray, 1849: Ettrick Bch (SGRDL)

Vermetidae

Dendropoma nucleocostatum (May, 1916): Black Pt, Seal Bay (SGRDL); Currie Hbr (SGRDL)

Petalonchus caperatus (Tate & May, 1900): Black Pt, Seal Bay (SGRDL); C Wickham (E) (SGRDL); Colliers Bch (SGRDL); Currie Hbr (SGRDL); Ettrick Bch (SGRDL); Fitzmaurice Bay (SGRDL, TMAG); Lt Porky Bch (SGRDL); Naracoopa (SGRDL, TMAG, MHR); Pass R Bay (TMAG); Porky Bch (SGRDL); Red Hut Pt (SGRDL); Seal Pt (SGRDL)

Serpulorbis sipho (Lamarck, 1818): Black Pt, Seal Bay (SGRDL); C Wickham (E) (SGRDL); Currie Hbr (SGRDL); Disappointment Bay (SGRDL); Elephant Shoal Reef (CJG); Fitzmaurice Bay (TMAG); Grassy Hbr (SGRDL); Halfmoon Bay (MHR); KI (unlocalised) (QVMAG); Lavinia Bch (SGRDL); Lt Porky Bch (SGRDL); Naracoopa (SGRDL, TMAG, MHR); Pass R Bay (TMAG); Porky Bch (SGRDL); Sandblow Bay, Grassy Hbr (SGRDL); Yellow Rock Bch (SGRDL, TMAG, MHR)

Buccinidae

Cominella eburnea (Reeve, 1846): Currie Hbr (SGRDL); Ettrick Bch (SGRDL); Fitzmaurice Bay (SGRDL); KI (unlocalised) (JFM, QVMAG, WLM); Naracoopa (SGRDL, MHR, KIM)

Cominella lineolata (Lamarck, 1809): Black Pt, Seal Bay (SGRDL); British Admiral Bch (TMAG); C Wickham (E) (SGRDL); Cataraqui Pt (MHR); City of Melbourne Bay (SGRDL, TMAG); Currie Hbr (SGRDL, MRG); Disappointment Bay (SGRDL); Ettrick Bch (SGRDL, TMAG); Fitzmaurice Bay (SGRDL, TMAG); Grassy Hbr (SGRDL, MRG); Gulchway, Stokes Pt (SGRDL); Halfmoon Bay (TMAG, MHR); KI (unlocalised) (JFM, TMAG, QVMAG, KIM, WLM); Lavinia Bch (SGRDL); Lt Porky Bch (SGRDL); Naracoopa (SGRDL, TMAG, MHR, MRG); Pass R Bay (TMAG); Porky Bch (SGRDL); Red Hut Pt (SGRDL); Sandblow Bay, Grassy Hbr (SGRDL); Seal Pt (SGRDL); Surprise Bay (SGRDL, MRG); Victoria Cove (MRG); W coast of KI (unlocalised) (TMAG)

Penion mandarinus (Duclos, 1831): Black Pt, Seal Bay (SGRDL); Cowper Pt, Sea Elephant Bay (SGRDL); KI (offshore, unlocalised) (KIM); KI (unlocalised) (JFM); Lavinia Bch (SGRDL); Naracoopa (SGRDL, TMAG, MHR); Porky Bch (SGRDL); Surprise Bay (SGRDL)

Penion maximus (Tryon, 1881): Cowper Pt, Sea Elephant Bay (SGRDL); KI (offshore, unlocalised) (KIM); Lavinia Bch (SGRDL); Naracoopa (MHR)

Tasmeuthria clarkei (Tenison Woods, 1876): Black Pt, Seal Bay (SGRDL); British Admiral Bch (TMAG); C Wickham (E) (SGRDL); Currie Hbr (SGRDL); Ettrick Bch (SGRDL); Fitzmaurice Bay (SGRDL, TMAG); Grassy Hbr (SGRDL); Halfmoon Bay (TMAG, MHR); KI (unlocalised) (JFM, WLM); Lt Porky Bch (SGRDL); Naracoopa (SGRDL, TMAG, MRG); Pass R Bay (TMAG); Porky Bch (SGRDL); W coast of KI (unlocalised) (TMAG)

Tasmeuthria kingicola (Tate & May, 1900): Fitzmaurice Bay (SGRDL, TMAG); KI (unlocalised) (JFM, WLM)

Colubrariidae

Cumia bednalli (Brazier, 1875): Elephant Shoal Reef (CJG); Halfmoon Bay (MHR); KI (unlocalised) (JFM)

Cumia mestayerae (Iredale, 1915): Black Pt, Seal Bay (SGRDL); Currie Hbr (MRG); Fitzmaurice Bay (SGRDL, TMAG); Grassy Hbr (SGRDL); KI (unlocalised) (JFM, WLM); Lt Porky Bch (SGRDL); Naracoopa (SGRDL, TMAG, MHR, KIM); Surprise Bay (SGRDL)

Columbellidae

Aesopus gatliffi (Verco, 1909): Elephant Shoal Reef (CJG)

Aesopus plurisulcatus (Reeve, 1859): KI (unlocalised) (MAM, WLM)

Anachis atkinsoni (Tenison Woods, 1876): Colliers Bch (SGRDL); Elephant Shoal Reef (CJG); Fitzmaurice Bay (TMAG); Grassy Hbr (MRG); Lt Porky Bch (SGRDL); Naracoopa (MRG)

Anachis beachportensis (Verco, 1910): Seal Pt (SGRDL)

Gatliffena fenestrata (Tate & May, 1900): Fitzmaurice Bay (TMAG)

Mitrella austrina (Gaskoin, 1851): Black Pt, Seal Bay (SGRDL); C Wickham (E) (SGRDL); Fitzmaurice Bay (TMAG); Foreshore S of Currie (TMAG); Grassy Hbr (SGRDL); Naracoopa (SGRDL, MRG); Seal Pt (SGRDL); Surprise Bay (MRG)

Mitrella leucostoma (Gaskoin, 1852): Black Pt, Seal Bay (SGRDL); British Admiral Bch (TMAG); C Wickham (E) (SGRDL); Currie Hbr (SGRDL); Elephant Shoal Reef (CJG); Ettrick Bch (MRG); Fitzmaurice Bay (SGRDL, TMAG); Halfmoon Bay (MHR); KI (unlocalised) (JFM, QVMAG); Lt Porky Bch (SGRDL); Naracoopa (SGRDL, TMAG, MHR, MRG); Pass R Bay (TMAG); Porky Bch (SGRDL); Seal Pt (SGRDL); Surprise Bay (SGRDL); Victoria Cove (MRG)

Mitrella lincolniensis (Reeve, 1859): Ettrick Bch (SGRDL, MRG); Fitzmaurice Bay (TMAG); Halfmoon Bay (TMAG, MHR); KI (unlocalised) (TMAG, QVMAG); Naracoopa (MRG); Pass R Bay (TMAG); W coast of KI (unlocalised) (TMAG)

Mitrella menkeana (Reeve, 1858): Black Pt, Seal Bay (SGRDL); C Wickham (E) (SGRDL); Currie Hbr (MRG); Elephant Shoal Reef (CJG); Fitzmaurice Bay (SGRDL, TMAG, MHR); Grassy Hbr (SGRDL); Halfmoon Bay (MHR); KI (unlocalised) (JFM, QVMAG); Lt Porky Bch (SGRDL); Naracoopa (SGRDL, TMAG, MHR); Pass R Bay (TMAG); Sandblow Bay, Grassy Hbr (SGRDL); Surprise Bay (MRG)

Mitrella semiconvexa (Lamarck, 1822): Black Pt, Seal Bay (SGRDL); British Admiral Bch (TMAG); C Wickham (E) (SGRDL); City of Melbourne Bay (SGRDL); Currie Hbr (SGRDL); E coast of KI (unlocalised) (TMAG); Ettrick Bch (SGRDL, TMAG); Fitzmaurice Bay (SGRDL, TMAG); Grassy Hbr (SGRDL); Halfmoon Bay (TMAG, MHR); KI (unlocalised) (JFM, QVMAG, WLM); Lt Porky Bch (SGRDL); Naracoopa (SGRDL, TMAG, MHR); Pass R Bay (TMAG); Porky Bch (SGRDL); Red Hut Pt (SGRDL); Seal Pt (SGRDL); Surprise Bay (SGRDL, MRG); Victoria Cove (MRG); W coast of KI (unlocalised) (TMAG)

Mitrella tenuis (Gaskoin, 1852): Black Pt, Seal Bay (SGRDL); British Admiral Bch (TMAG); C Wickham (E) (SGRDL); Foreshore S of Currie (TMAG); Grassy Hbr (SGRDL); Halfmoon Bay (TMAG, MHR); KI (unlocalised) (JFM, QVMAG, WLM); Naracoopa (SGRDL, TMAG, MHR); Pass R Bay (TMAG); Victoria Cove (MRG)

- Pseudamycla dermestoides* (Lamarck, 1822): Naracoopa (MRG)
Pseudamycla miltostoma (Tenison Woods, 1876): Fitzmaurice Bay (SGRDL)
- Pyreneola fulgida* (Reeve, 1859): Colliers Bch (SGRDL); Currie Hbr (SGRDL); Elephant Shoal Reef (CJG); Ettrick Bch (SGRDL); Fitzmaurice Bay (SGRDL, TMAG); Grassy Hbr (SGRDL); KI (unlocalised) (WLM); Lt Porky Bch (SGRDL); Seal Pt (SGRDL)
- Pyreneola lurida* (Hedley, 1907): Colliers Bch (SGRDL); Elephant Shoal Reef (CJG); Fitzmaurice Bay (SGRDL, TMAG); Lt Porky Bch (SGRDL); Seal Pt (SGRDL)
- Retizafra calva* (Verco, 1910): Elephant Shoal Reef (CJG)
Zafra legrandi (Tenison Woods, 1876): Elephant Shoal Reef (CJG); Ettrick Bch (SGRDL); KI (unlocalised) (TMAG, QVMAG, WLM); W coast of KI (unlocalised) (TMAG)
- Fascioliariidae**
Australaria australasia (Perry, 1811): Bass Strait NE of KI, scallop survey site 08 (TMAG); Black Pt, Seal Bay (SGRDL); British Admiral Bch (TMAG); C Wickham (E) (SGRDL); City of Melbourne Bay (SGRDL); Cooper Bluff (MRG); Cowper Pt, Sea Elephant Bay (SGRDL); Currie Hbr (SGRDL, MRG); Disappointment Bay (SGRDL); Ettrick Bch (SGRDL, TMAG, MRG); Fitzmaurice Bay (SGRDL, TMAG); Gulchway, Stokes Pt (SGRDL); Halfmoon Bay (MHR); KI (unlocalised) (JFM, QVMAG, KIM, WLM); Lavinia Bch (SGRDL); Lt Porky Bch (SGRDL); Naracoopa (SGRDL, MHR, MRG); Pass R Bay (TMAG); Seal Pt (SGRDL); S coast of KI (unlocalised) (TMAG); Surprise Bay (SGRDL, MRG); Yellow Rock Bch (SGRDL, MHR)
- Dolicholaturus spiceri* (Tenison Woods, 1876): C Wickham (E) (SGRDL); Currie Hbr (SGRDL); KI (unlocalised) (TMAG, WLM)
- Fusinus novaehollandiae* (Reeve, 1847): Cowper Pt, Sea Elephant Bay (SGRDL); KI (offshore, unlocalised) (KIM); Naracoopa (SGRDL)
- Fusinus undulatus* (Perry, 1811): Black Pt, Seal Bay (SGRDL); Currie Hbr (SGRDL); KI (unlocalised) (QVMAG, WLM); Lavinia Bch (SGRDL); Naracoopa (SGRDL, TMAG, KIM); Red Hut Pt (SGRDL)
- Nassariidae**
Nassarius compactus (Angas, 1865): Currie Hbr (SGRDL); Ettrick Bch (SGRDL, MRG); Fitzmaurice Bay (SGRDL, TMAG); Halfmoon Bay (MHR); KI (unlocalised) (JFM, WLM); Pass R Bay (TMAG); Seal Pt (SGRDL)
- Nassarius nigellus* (Reeve, 1854): Naracoopa (SGRDL)
Nassarius pauperatus (Lamarck, 1822): Naracoopa (SGRDL, MHR)
Nassarius pyrrhus (Menke, 1843): KI (unlocalised) (QVMAG); Naracoopa (SGRDL, KIM)
- Cancellariidae**
Cancellaria granosa Sowerby, 1832: Disappointment Bay (SGRDL); KI (unlocalised) (QVMAG); Naracoopa (SGRDL, TMAG, KIM); S coast of KI (unlocalised) (TMAG); Yellow Rock Bch (TMAG, MHR)
- Cancellaria lactea* Deshayes, 1830: Black Pt, Seal Bay (SGRDL); C Wickham (E) (SGRDL); City of Melbourne Bay (SGRDL); Currie Hbr (SGRDL); Ettrick Bch (SGRDL); Fitzmaurice Bay (SGRDL, TMAG); Grassy Hbr (SGRDL); Halfmoon Bay (MHR); KI (unlocalised) (QVMAG); Lavinia Bch (SGRDL); Lt Porky Bch (SGRDL); Naracoopa (SGRDL, TMAG, MHR, KIM); Red Hut Pt (SGRDL); Seal Pt (SGRDL); Surprise Bay (SGRDL); W coast of KI (unlocalised) (TMAG); Yellow Rock Bch (TMAG, MHR)
- Cancellaria purpuriformis* Kiener, 1841: KI (unlocalised) (TMAG, QVMAG); Naracoopa (SGRDL)
Cancellaria spirata Lamarck, 1822: KI (unlocalised) (WLM); Naracoopa (SGRDL, TMAG, MHR, KIM)
- Cancellaria undulata* Sowerby, 1849: KI (unlocalised) (JFM, QVMAG); Naracoopa (SGRDL, TMAG, KIM); Yellow Rock Bch (TMAG, MHR)
- Clathrellidae**
Etrema bicolor (Angas, 1871): Elephant Shoal Reef (CJG); Fitzmaurice Bay (TMAG); KI (unlocalised) (JFM)
Etrema denseplicata (Dunker, 1871): Colliers Bch (SGRDL); Elephant Shoal Reef (CJG); Ettrick Bch (SGRDL); Fitzmaurice Bay (SGRDL); KI (unlocalised) (JFM); Seal Pt (SGRDL)
- Conidae**
Conus anemone Lamarck, 1810: Black Pt, Seal Bay (SGRDL); British Admiral Bch (TMAG); C Wickham (E) (SGRDL); City of Melbourne Bay (SGRDL, TMAG); Cowper Pt, Sea Elephant Bay (SGRDL); Currie Hbr (SGRDL); Disappointment Bay (SGRDL); E coast of KI (unlocalised) (TMAG); Ettrick Bch (SGRDL, TMAG); Fitzmaurice Bay (SGRDL, TMAG); Grassy Hbr (SGRDL, MRG); Gulchway, Stokes Pt (SGRDL); Halfmoon Bay (TMAG, MHR); KI (unlocalised) (JFM, QVMAG, KIM, WLM); Lt Porky Bch (SGRDL); Naracoopa (SGRDL, TMAG, MHR, MRG); Pass R Bay (TMAG); Porky Bch (SGRDL); Red Hut Pt (SGRDL); Seal Pt (SGRDL); Surprise Bay (SGRDL, MRG); Victoria Cove (MRG); W coast of KI (unlocalised) (TMAG); Yellow Rock Bch (SGRDL, TMAG, MHR)
- Conus clarus* E. A. Smith, 1881: Elephant Shoal Reef (CJG); Naracoopa (SGRDL)
Conus rutilus Menke, 1843: Elephant Shoal Reef (CJG); KI (unlocalised) (JFM)
- Drilliidae**
Paracuneus immaculatus (Tenison Woods, 1876): KI (unlocalised) (TMAG, QVMAG)
- Horaiclavidae**
Austrodrillia beraudiana (Crosse, 1863): Black Pt, Seal Bay (SGRDL); C Wickham (E) (SGRDL); Currie Hbr (SGRDL); Ettrick Bch (SGRDL); Fitzmaurice Bay (SGRDL, TMAG); Grassy Hbr (SGRDL); Halfmoon Bay (MHR); KI (unlocalised) (JFM, WLM); Lt Porky Bch (SGRDL); Naracoopa (SGRDL, TMAG, MHR); Porky Bch (SGRDL); W coast of KI (unlocalised) (TMAG)
- Austrodrillia saxea* (Sowerby, 1896): Elephant Shoal Reef (CJG)
- Mangeliidae**
Guraleus alucinans (Sowerby, 1896): Currie Hbr (SGRDL); Ettrick Bch (SGRDL); Fitzmaurice Bay (SGRDL, TMAG); Grassy Hbr (SGRDL); Halfmoon Bay (TMAG); Lt Porky Bch (SGRDL); Pass R Bay (TMAG); Seal Pt (SGRDL)
- Guraleus australis* (A. Adams & Angas, 1863): Fitzmaurice Bay (SGRDL); Grassy Hbr (SGRDL); Naracoopa (SGRDL); KI (unlocalised) (JFM)
- Guraleus delicatulus* (Tenison Woods, 1878): C Wickham (E) (SGRDL); Elephant Shoal Reef (CJG)
- Guraleus mitralis* (A. Adams & Angas, 1863): Black Pt, Seal Bay (SGRDL); C Wickham (E) (SGRDL); Ettrick Bch (SGRDL); Fitzmaurice Bay (SGRDL, TMAG); Halfmoon Bay (MHR); Lt Porky Bch (SGRDL); Naracoopa (SGRDL, TMAG, MHR); Pass R Bay (TMAG); Porky Bch (SGRDL); Seal Pt (SGRDL)
- Guraleus pictus* (A. Adams & Angas, 1863): Fitzmaurice Bay (SGRDL); Grassy Hbr (SGRDL); Halfmoon Bay (MHR); KI (unlocalised) (JFM, WLM); Naracoopa (SGRDL); Pass R Bay (TMAG); Porky Bch (SGRDL)
- Guraleus tasmanicus* (Tenison Woods, 1876): W coast of KI (unlocalised) (TMAG)
- Marita compta* (A. Adams & Angas, 1864): KI (unlocalised) (JFM)
- Mitromorphidae**
Mitromorpha alba (Petterd, 1879): C Wickham (E) (SGRDL); Ettrick Bch (SGRDL); Fitzmaurice Bay (SGRDL); KI

- (unlocalised) (JFM, WLM); Lt Porky Bch (SGRDL); Naracoopa (MRG)
- Mitromorpha bassiana* Gabriel, 1956: Elephant Shoal Reef (CJG)
- Mitromorpha macphersonae* Gabriel, 1956: Elephant Shoal Reef (CJG)
- Pseudomelatomidae
- Epidirona philipineri* Tenison Woods, 1877: KI (unlocalised) (QVMAG); Naracoopa (SGRDL, MHR)
- Raphitomidae
- Asperdaphne bastowi* (Gatliff & Gabriel, 1908): Elephant Shoal Reef (CJG)
- Asperdaphne desalesii* (Tenison Woods, 1877): Halfmoon Bay (MHR); W coast of KI (unlocalised) (TMAG)
- Asperdaphne legrandi* (Beddome, 1883): KI (unlocalised) (JFM)
- Asperdaphne perplexa* (Verco, 1909): Elephant Shoal Reef (CJG)
- Asperdaphne sculptilis* (Angas, 1871): Elephant Shoal Reef (CJG)
- Asperdaphne tasmanica* (Tenison Woods, 1876): Currie Hbr (SGRDL); KI (unlocalised) (JFM, WLM)
- Exomilus dyscritos* (Verco, 1906): Fitzmaurice Bay (TMAG)
- Exomilus telescopialis* (Verco, 1896): Elephant Shoal Reef (CJG)
- Nepotilla lamellosa* (Sowerby, 1896): Elephant Shoal Reef (CJG)
- Paramontana mayana* (Hedley, 1922): Fitzmaurice Bay (TMAG)
- Paramontana rufozonata* (Angas, 1877): Currie Hbr (SGRDL); Ettrick Bch (SGRDL); Fitzmaurice Bay (SGRDL); Lt Porky Bch (SGRDL)
- Zenepos minuta* (Tenison Woods, 1877): Fitzmaurice Bay (SGRDL); Elephant Shoal Reef (CJG)
- Terebridae
- Duplicaria ustulata* (Deshayes, 1857): Black Pt, Seal Bay (SGRDL); Cowper Pt, Sea Elephant Bay (SGRDL); KI (unlocalised) (WLM); Naracoopa (SGRDL)
- Terebra albida* Gray, 1834: KI (unlocalised) (JFM, MAM, WLM)
- Terebra tristis* Deshayes, 1859: Colliers Bch (SGRDL); Naracoopa (SGRDL)
- Costellariidae
- Austromitra analogica* (Reeve, 1845): British Admiral Bch (TMAG); C Wickham (E) (SGRDL); Currie Hbr (SGRDL, MRG); Elephant Shoal Reef (CJG); Ettrick Bch (SGRDL); Fitzmaurice Bay (SGRDL, TMAG); Grassy Hbr (SGRDL, MRG); Halfmoon Bay (TMAG, MHR); KI (unlocalised) (JFM, QVMAG, TMAG); Lt Porky Bch (SGRDL); Naracoopa (SGRDL, MRG, MHR); Pass R Bay (TMAG); Porky Bch (SGRDL); Red Hut Pt (SGRDL); Surprise Bay (SGRDL); Victoria Cove (MRG)
- Costellariidae
- Vexillum australe* (Swainson, 1820): Black Pt, Seal Bay (SGRDL); C Wickham (E) (SGRDL); Currie Hbr (SGRDL, MRG); Ettrick Bch (SGRDL); Fitzmaurice Bay (SGRDL, TMAG); Grassy Hbr (SGRDL); Halfmoon Bay (MHR); KI (unlocalised) (JFM, QVMAG, KIM, WLM); Lt Porky Bch (SGRDL); Naracoopa (SGRDL, TMAG, MHR); Porky Bch (SGRDL); Red Hut Pt (SGRDL); S coast of KI (unlocalised) (TMAG); Surprise Bay (SGRDL); W coast of KI (unlocalised) (TMAG)
- Cystiscidae
- Cystiscus angasi* (Crosse, 1870): Ettrick Bch (SGRDL); Fitzmaurice Bay (SGRDL, TMAG); Grassy Hbr (MRG); KI (unlocalised) (WLM)
- Cystiscus halli* (Pritchard & Gatliff, 1899): Elephant Shoal Reef (CJG); Fitzmaurice Bay (TMAG)
- Cystiscus minutissimus* (Tenison Woods, 1876): Elephant Shoal Reef (CJG)
- Cystiscus obesulus* (May, 1919): Currie Hbr (MRG); Naracoopa (MRG)
- Cystiscus subauriculatus* (May, 1916): Colliers Bch (SGRDL); Elephant Shoal Reef (CJG)
- Gibberula agapeta* (Watson, 1886): Elephant Shoal Reef (CJG)
- Gibberula diplostreptus* (May, 1916): Halfmoon Bay (MHR); Naracoopa (SGRDL)
- Gibberula subbulbosa* (Tate, 1878): Currie Hbr (MRG); Ettrick Bch (SGRDL); Fitzmaurice Bay (TMAG); Halfmoon Bay (MHR); KI (unlocalised) (WLM)
- Persicula pulchella* (Kiener, 1834): Fitzmaurice Bay (SGRDL)
- Marginellidae
- Austroginella formicula* (Lamarck, 1822): Colliers Bch (SGRDL); KI (unlocalised) (WLM); Lt Porky Bch (SGRDL); Naracoopa (SGRDL, TMAG, MHR); Sandblow Bay, Grassy Hbr (SGRDL)
- Austroginella muscaria* (Lamarck, 1822): KI (unlocalised) (QVMAG)
- Austroginella tasmanica* (Tenison Woods, 1876): Naracoopa (SGRDL, MHR)
- Dentimargo dentiens* (May, 1911): Halfmoon Bay (TMAG)
- Dentimargo gabrieli* (May, 1911): Elephant Shoal Reef (CJG)
- Hydroginella columnaria* (Hedley & May, 1908): KI (unlocalised) (QVMAG)
- Hydroginella tridentata* (Tate, 1878): Fitzmaurice Bay (TMAG)
- Mesoginella altilabra* (May, 1911): Fitzmaurice Bay (TMAG)
- Mesoginella pygmaeoides* (Singleton, 1937): Black Pt, Seal Bay (SGRDL); British Admiral Bch (TMAG); C Wickham (E) (SGRDL); Catarauqui Pt (MHR); Currie Hbr (SGRDL, MRG, KIM); Disappointment Bay (SGRDL); Ettrick Bch (SGRDL); Fitzmaurice Bay (SGRDL, TMAG); Grassy Hbr (SGRDL); Halfmoon Bay (TMAG, MHR); KI (unlocalised) (TMAG, QVMAG); Lt Porky Bch (SGRDL); Naracoopa (SGRDL, TMAG, MRG); Pass R Bay (TMAG); Porky Bch (SGRDL); Seal Pt (SGRDL); Surprise Bay (SGRDL)
- Mesoginella translucida* (Sowerby, 1846): KI (unlocalised) (JFM)
- Mesoginella turbinata* (Sowerby, 1846): Elephant Shoal Reef (CJG); KI (unlocalised) (JFM); Naracoopa (SGRDL)
- Ovaginella ovulum* (Sowerby, 1846): KI (unlocalised) (JFM)
- Ovaginella pisum* (Reeve, 1865): Elephant Shoal Reef (CJG); Fitzmaurice Bay (TMAG)
- Serrata mustelina* (Angas, 1871): Currie Hbr (SGRDL); Fitzmaurice Bay (SGRDL, KIM); Grassy Hbr (SGRDL); KI (unlocalised) (JFM); Naracoopa (MRG)
- Serrata vincentiana* (Cotton, 1944): KI (unlocalised) (WLM)
- Mitridae
- Mitra badia* Reeve, 1844: Black Pt, Seal Bay (SGRDL); British Admiral Bch (TMAG); C Wickham (E) (SGRDL); City of Melbourne Bay (SGRDL); Currie Hbr (SGRDL); Ettrick Bch (SGRDL, TMAG); Fitzmaurice Bay (SGRDL, TMAG); Grassy Hbr (SGRDL); KI (unlocalised) (JFM, QVMAG); Lt Porky Bch (SGRDL); Naracoopa (SGRDL, TMAG, MHR); Porky Bch (SGRDL); Red Hut Pt (SGRDL); Seal Pt (SGRDL); S coast of KI (unlocalised) (TMAG); Surprise Bay (SGRDL)
- Mitra glabra* Swainson, 1821: Black Pt, Seal Bay (SGRDL); C Wickham (E) (SGRDL); City of Melbourne Bay (SGRDL); KI (unlocalised) (QVMAG, KIM, WLM); Naracoopa (SGRDL, TMAG, MHR); Seal Pt (SGRDL)
- Muricidae
- Agnewia tritoniformis* (Blainville, 1832): C Wickham (E) (SGRDL); Fitzmaurice Bay (TMAG); Grassy Hbr (SGRDL); Naracoopa (SGRDL, MHR, KIM)
- Bedeua paivae* (Crosse, 1864): KI (unlocalised) (QVMAG); Naracoopa (SGRDL, TMAG, MHR, KIM)
- Dermomurex goldsteini* (Tenison Woods, 1876): Black Pt, Seal Bay (SGRDL); KI (unlocalised) (WLM)
- Dicathais orbita* (Gmelin, 1791): Black Pt, Seal Bay (SGRDL); Blowhole, Sea Elephant Bay (SGRDL); British Admiral Bch (TMAG); C Wickham (E) (SGRDL); Catarauqui Pt (MHR); City of Melbourne Bay (SGRDL, TMAG); Cowper Pt, Sea Elephant Bay (SGRDL); Currie Hbr (SGRDL, MRG); Disappointment Bay (SGRDL); Ettrick Bch (SGRDL);

- Fitzmaurice Bay (SGRDL, TMAG); Grassy Hbr (SGRDL, MRG); Gulchway, Stokes Pt (SGRDL); Halfmoon Bay (MHR); KI (unlocalised) (JFM, KIM, WLM); Lavinia Bch (SGRDL); Lt Porky Bch (SGRDL); Naracoopa (SGRDL, TMAG, MHR, MRG); Pass R Bay (TMAG); Porky Bch (SGRDL); Red Hut Pt (SGRDL); Sandblow Bay, Grassy Hbr (SGRDL); Seal Pt (SGRDL); Surprise Bay (SGRDL); Victoria Cove (TMAG, MRG); W coast of KI (unlocalised) (TMAG); Yellow Rock Bch (TMAG, MHR)
- Haustrum baileyanaum* (Tenison Woods, 1881): Black Pt, Seal Bay (SGRDL); C Wickham (E) (SGRDL); Disappointment Bay (SGRDL); Ettrick Bch (SGRDL); Grassy Hbr (SGRDL); KI (unlocalised) (WLM); Lt Porky Bch (SGRDL); Naracoopa (SGRDL); Porky Bch (SGRDL); Sandblow Bay, Grassy Hbr (SGRDL); Seal Pt (SGRDL); Surprise Bay (SGRDL)
- Haustrum vinosum* (Lamarck, 1822): Black Pt, Seal Bay (SGRDL); British Admiral Bch (TMAG); C Wickham (E) (SGRDL); City of Melbourne Bay (SGRDL); Cooper Bluff (MRG); Currie Hbr (SGRDL, MRG); Ettrick Bch (SGRDL, TMAG); Fitzmaurice Bay (SGRDL, TMAG); Grassy Hbr (SGRDL, MRG); Gulchway, Stokes Pt (SGRDL); Halfmoon Bay (MHR); KI (unlocalised) (JFM, TMAG, QVMAG, WLM); Lt Porky Bch (SGRDL); Naracoopa (SGRDL, TMAG, MHR, MRG); Pass R Bay (TMAG); Porky Bch (SGRDL); Sandblow Bay, Grassy Hbr (SGRDL); Seal Pt (SGRDL); Surprise Bay (SGRDL); Victoria Cove (TMAG, MRG); W coast of KI (unlocalised) (TMAG)
- Litozamia brazieri* (Tenison Woods, 1875): Black Pt, Seal Bay (SGRDL); C Wickham (E) (SGRDL); Currie Hbr (SGRDL); Elephant Shoal Reef (CJG); Ettrick Bch (SGRDL, MRG); Fitzmaurice Bay (SGRDL, TMAG); Grassy Hbr (SGRDL); Halfmoon Bay (MHR); Halfmoon Bay (TMAG); Naracoopa (SGRDL, TMAG, MHR, MRG); Pass R Bay (TMAG); Porky Bch (SGRDL); Sandblow Bay, Grassy Hbr (SGRDL); Seal Pt (SGRDL)
- Litozamia petterdi* (Crosse, 1870): Elephant Shoal Reef (CJG); Fitzmaurice Bay (TMAG); Grassy Hbr (SGRDL); KI (unlocalised) (JFM)
- Litozamia rudolphi* (Brazier, 1894): Fitzmaurice Bay (SGRDL)
- Muricopsis umbilicatus* (Tenison Woods, 1876): KI (unlocalised) (JFM); Naracoopa (SGRDL)
- Phycothais reticulata* (Blainville, 1832): Black Pt, Seal Bay (SGRDL); British Admiral Bch (TMAG); C Wickham (E) (SGRDL); Currie Hbr (SGRDL); Ettrick Bch (SGRDL); Fitzmaurice Bay (SGRDL, TMAG); Grassy Hbr (SGRDL); Gulchway, Stokes Pt (SGRDL); Halfmoon Bay (TMAG, MHR); KI (unlocalised) (QVMAG, WLM); Lt Porky Bch (SGRDL); Naracoopa (SGRDL, TMAG, MHR); Pass R Bay (TMAG); Porky Bch (SGRDL); Seal Pt (SGRDL); S coast of KI (unlocalised) (TMAG); Surprise Bay (SGRDL, MRG); W coast of KI (unlocalised) (TMAG)
- Phyllocoma eburnea* (Petterd, 1884): Halfmoon Bay (MHR); KI (unlocalised) (QVMAG, MV)
- Prototyphis angasi* (Crosse, 1863): Black Pt, Seal Bay (SGRDL); British Admiral Bch (TMAG); Currie Hbr (SGRDL); Fitzmaurice Bay (TMAG); Grassy Hbr (SGRDL); KI (unlocalised) (JFM, QVMAG, KIM); Lt Porky Bch (SGRDL); Naracoopa (SGRDL); W coast of KI (unlocalised) (TMAG)
- Pterochelus triformis* (Reeve, 1845): Black Pt, Seal Bay (SGRDL); Elephant Shoal Reef (CJG); Ettrick Bch (SGRDL); Halfmoon Bay (MHR); KI (unlocalised) (JFM, QVMAG, WLM); Lavinia Bch (SGRDL); Naracoopa (SGRDL, TMAG, MHR, KIM, MRG); Yellow Rock Bch (TMAG, MHR)
- Volutidae**
- Amoria undulata* (Lamarck, 1804): Black Pt, Seal Bay (SGRDL); Blowhole, Sea Elephant Bay (SGRDL); City of Melbourne Bay (SGRDL); Cowper Pt, Sea Elephant Bay (SGRDL); KI (unlocalised) (QVMAG, KIM, WLM); Lavinia Bch (SGRDL); Naracoopa (SGRDL, TMAG, MHR); Sandblow Bay, Grassy Hbr (SGRDL); Yellow Rock Bch (SGRDL, TMAG, MHR)
- Ericusa papillosa* (Swainson, 1822): KI (offshore, unlocalised) (KIM)
- Ericusa sowerbyi* (Kiener, 1839): Black Pt, Seal Bay (SGRDL); KI (offshore, unlocalised) (KIM); Lavinia Bch (SGRDL)
- Livonia mammilla* (Sowerby, 1844): Cowper Pt, Sea Elephant Bay (SGRDL); KI (unlocalised) (QVMAG); Lavinia Bch (KIM)
- Livonia roadnightae* (McCoy, 1881): KI (offshore, unlocalised) (KIM)
- Lyria mitraeformis* (Lamarck, 1811): Fitzmaurice Bay (TMAG); Naracoopa (KIM)
- Volutomitridae**
- Waimatea obscura* (Hutton, 1873): Black Pt, Seal Bay (SGRDL); Currie Hbr (SGRDL, MRG); Ettrick Bch (SGRDL, TMAG); Fitzmaurice Bay (SGRDL, TMAG); Grassy Hbr (SGRDL, MRG); Halfmoon Bay (MHR); KI (unlocalised) (JFM, QVMAG, WLM); Lt Porky Bch (SGRDL); Naracoopa (SGRDL, TMAG, MHR, KIM, MRG); Porky Bch (SGRDL); Red Hut Pt (SGRDL); Surprise Bay (SGRDL, MRG); W coast of KI (unlocalised) (TMAG)
- Olividae**
- Amalda marginata* (Lamarck, 1811): Black Pt, Seal Bay (SGRDL); Elephant Shoal Reef (CJG); Halfmoon Bay (MHR); KI (unlocalised) (KIM, WLM); Lt Porky Bch (SGRDL); Naracoopa (SGRDL, TMAG, MHR); Seal Pt (SGRDL); W coast of KI (unlocalised) (TMAG); Yellow Rock Bch (SGRDL, MHR)
- Amalda petterdi* (Tate, 1893): KI (unlocalised) (JFM)
- Architectonicidae**
- Philippia lutea* (Lamarck, 1822): Black Pt, Seal Bay (SGRDL); Grassy Hbr (SGRDL)
- Graphididae**
- Coenaculum minutulum* (Tate & May, 1900): Fitzmaurice Bay (TMAG)
- Murchisonellidae**
- Kolonella micra* (Petterd, 1884): Fitzmaurice Bay (SGRDL)
- Orbitestellidae**
- Microdiscula charopa* Tate, 1899: Ettrick Bch (SGRDL); Fitzmaurice Bay (TMAG); KI (unlocalised) (WLM); Surprise Bay (MRG)
- Orbitestella bastowi* (Gatliff, 1906): Fitzmaurice Bay (SGRDL); Lt Porky Bch (SGRDL)
- Orbitestella cf decorata* Laseron, 1954: Fitzmaurice Bay (SGRDL)
- Pyramidellidae**
- Cinctiuga diaphana* (Verco, 1906): Fitzmaurice Bay (SGRDL, TMAG)
- Hinemoa tasmanica* (Tenison Woods, 1877): Ettrick Bch (SGRDL); Lt Porky Bch (SGRDL)
- Linopyrga portseaensis* (Gatliff & Gabriel, 1911): C Wickham (E) (SGRDL); Fitzmaurice Bay (TMAG); KI (unlocalised) (WLM); Seal Pt (SGRDL)
- Liostomia tasmanica* (Tenison Woods, 1877): Fitzmaurice Bay (TMAG); KI (unlocalised) (JFM, WLM); Pass R Bay (TMAG)
- Miralda montuosa* Laseron, 1951: Fitzmaurice Bay (SGRDL, det. LS)
- Miralda suprasculpta* (Tenison Woods, 1878): Ettrick Bch (SGRDL); Fitzmaurice Bay (SGRDL, TMAG); Pass R Bay (TMAG)
- Odostomia crassica* (May, 1916): Fitzmaurice Bay (TMAG)
- Odostomia deplexa* Tate & May, 1900: Currie Hbr (SGRDL); Ettrick Bch (SGRDL); Fitzmaurice Bay (SGRDL); Halfmoon Bay (TMAG); Seal Pt (SGRDL)
- Odostomia mayii* (Tate, 1898): Fitzmaurice Bay (SGRDL)
- Puposyrnola tasmanica* (Tenison Woods, 1877): Fitzmaurice Bay (SGRDL)
- Syrnola angasi* (Tryon, 1886): Grassy Hbr (MRG)
- Syrnola aurantiaca* (Angas, 1867): Lt Porky Bch (SGRDL)

- Syrnola metcalfei* (Pritchard & Gatliff, 1900): Fitzmaurice Bay (SGRDL, TMAG); KI (unlocalised) (JFM); Pass R Bay (TMAG)
- Syrnola tincta* Angas, 1871: Colliers Bch (SGRDL); Fitzmaurice Bay (SGRDL)
- Turbonilla fusca* (A. Adams, 1855): Ettrick Bch (SGRDL); Seal Pt (SGRDL)
- Turbonilla macleayana* Tenison Woods, 1877: Currie Hbr (SGRDL); Fitzmaurice Bay (SGRDL)
- Turbonilla mariae* Tenison Woods, 1876: C Wickham (E) (SGRDL); Currie Hbr (SGRDL); Ettrick Bch (SGRDL, MRG); Fitzmaurice Bay (SGRDL, TMAG); Grassy Hbr (SGRDL); Halfmoon Bay (TMAG, MHR); KI (unlocalised) (JFM, TMAG, WLM); Lt Porky Bch (SGRDL); Pass R Bay (TMAG); Seal Pt (SGRDL); Surprise Bay (MRG); Victoria Cove (MRG)
- Turbonilla tasmanica* Tenison Woods, 1875: Fitzmaurice Bay (SGRDL, TMAG); Lt Porky Bch (SGRDL); Pass R Bay (TMAG); Seal Pt (SGRDL)
- Aplysiidae**
- Aplysia juliana* Quoy & Gaimard, 1832: Grassy Hbr (MRG); Naracoopa (MRG)
- Aplysia parvula* Guilding in Mörch, 1863: Currie Hbr (MRG); Ettrick Bch (SGRDL); Grassy Hbr (MRG); KI (unlocalised) (QVMAG); Naracoopa (MRG)
- Aplysia sydneynensis* Sowerby, 1869: Sea Elephant Lagoon (MRG)
- Haminoeidae**
- Haminoea maugeansis* Burn, 1966: Ettrick Bch (SGRDL); Grassy Hbr (MRG); KI (unlocalised) (WLM); Naracoopa (MRG); Pass R Bay (TMAG); Seal Pt (SGRDL)
- Aglajidae**
- Melanochlamys queritor* (Burn, 1958): Naracoopa (MRG)
- Cylichnidae**
- Adamnestia arachis* (Quoy & Gaimard, 1833): Naracoopa (KIM)
- Tornatina apicina* Gould, 1859: Currie Hbr (SGRDL); Ettrick Bch (SGRDL); Fitzmaurice Bay (SGRDL, TMAG); KI (unlocalised) (WLM); Lt Porky Bch (SGRDL); Pass R Bay (TMAG)
- Tornatina* BURN sp 07: Colliers Bch (SGRDL)
- Tornatina cf hacketti* (Cotton & Godfrey, 1933): Colliers Bch (SGRDL)
- Philinidae**
- Philine angasi* (Crosse & Fischer, 1865): Cowper Pt, Sea Elephant Bay (SGRDL); KI (unlocalised) (WLM); Lavinia Bch (SGRDL); Naracoopa (SGRDL, KIM)
- Retusidae**
- Retusa pelyx* Burn in Burn & Bell, 1974: Elephant Shoal Reef (CJG); Fitzmaurice Bay (SGRDL, TMAG)
- Runcinidae**
- Runcina australis* Burn, 1963: Currie Hbr (MRG); Naracoopa (MRG)
- Dotidae**
- Doto ostenta* Burn, 1958: Currie Hbr (MRG)
- Proctonotidae**
- Caldukia affinis* (Burn, 1958): Grassy Hbr (MRG)
- Janolus* BURN sp 01: Naracoopa (MRG)
- Aeolidiidae**
- Spurilla macleayi* (Angas, 1864): Currie Hbr (MRG); Victoria Cove (MRG)
- Scyllaeidae**
- Scyllaea pelagica* Linnaeus, 1758: Currie Hbr (MRG); Naracoopa (MRG)
- Tethyidae**
- Melibe australis* (Angas, 1864): Currie Hbr (MRG)
- Chromodorididae**
- Ceratosoma brevicaudatum* Abraham, 1876: Currie Hbr (QVMAG)
- Discodorididae**
- Hoplodoris nodulosa* (Angas, 1864): Grassy Hbr (MRG)
- Rostanga crawfordi* (Burn, 1969): Grassy Hbr (MRG)
- Sclerodoris tarka* Burn, 1969: Grassy Hbr (MRG)
- Dorididae**
- Aphelodoris greeni* Burn, 1966: Naracoopa (MRG)
- Aphelodoris rossquicki* Burn, 1966: Naracoopa (MV)
- Neodoris chrysozodermis* (Angas, 1864): Naracoopa (MRG)
- Onchidorididae**
- Onchidoris maugeansis* (Burn, 1958): Grassy Hbr (MRG)
- Dendrodorididae**
- Dendrodoris maugeana* Burn, 1962: Naracoopa (MRG); Victoria Cove (MRG)
- Doriopsis miniata* (Alder & Hancock, 1864): Naracoopa (MRG)
- Gymnodorididae**
- Paliolla cooki* (Angas, 1864): Grassy Hbr (MRG)
- Pleurobranchidae**
- Berthella serenitas* Burn, 1962: Grassy Hbr (MRG); Naracoopa (MRG)
- Pleurobranchaea maculata* (Quoy & Gaimard, 1832): Naracoopa (MRG)
- Juliidae**
- Edentellina typica* Gatliff & Gabriel, 1911: Currie Hbr (MRG); Naracoopa (MRG)
- Midorigai australis* Burn, 1960: Naracoopa (MRG)
- Tamanovalva babai* Burn, 1965: Naracoopa (MRG)
- Volvatellidae**
- Ascobulla fisheri* (A. Adams & Angas, 1864): Naracoopa (MRG)
- Limapontiidae**
- Placida dendritica* (Alder & Hancock, 1843): Currie Hbr (MRG); Naracoopa (MRG)
- Cavoliniidae**
- Clio pyramidata* Linnaeus, 1767: Fitzmaurice Bay (SGRDL); Seal Pt (SGRDL)
- Amphibolidae**
- Salinator fragilis* (Lamarck, 1822): Sea Elephant Lagoon (MRG)
- Phallomedusidae**
- Phallomedusa solida* (von Martens, 1878): Sea Elephant Lagoon (MRG)
- Siphonariidae**
- Pugillaria stowae* (Verco, 1906): Colliers Bch (SGRDL); Ettrick Bch (SGRDL); Seal Pt (SGRDL); Surprise Bay (MRG); Victoria Cove (MRG)
- Siphonaria diemenensis* Quoy & Gaimard, 1833: Black Pt, Seal Bay (SGRDL); British Admiral Bch (TMAG); C Wickham (E) (SGRDL); City of Melbourne Bay (SGRDL, TMAG); Currie Hbr (SGRDL, MRG); Disappointment Bay (SGRDL); E coast of KI (unlocalised) (TMAG); Ettrick Bch (SGRDL, TMAG, MRG); Fitzmaurice Bay (SGRDL, TMAG); Grassy

(unlocalised) (TMAG); Grassy Hbr (SGRDL, MRG); Gulchway, Stokes Pt (SGRDL); Halfmoon Bay (MHR); KI (unlocalised) (JFM, TMAG, WLM); Lavinia Bch (SGRDL, TMAG, MHR); Lt Porky Bch (SGRDL); Naracoopa (SGRDL, TMAG, MHR, MRG); Pass R Bay (TMAG); Red Hut Pt (SGRDL); Seal Pt (SGRDL); Surprise Bay (SGRDL, MRG); Victoria Cove (MRG); W coast of KI (unlocalised) (TMAG); Yellow Rock Bch (TMAG, MHR)

Siphonaria funiculata Reeve, 1856: Colliers Bch (SGRDL); Currie Hbr (SGRDL, MRG); Fitzmaurice Bay (SGRDL, TMAG); Grassy Hbr (SGRDL, MRG); Halfmoon Bay (TMAG, MHR); Lt Porky Bch (SGRDL); Naracoopa (SGRDL, MRG); Pass R Bay (TMAG); Red Hut Pt (SGRDL); Surprise Bay (MRG); Yellow Rock Bch (MHR)

Ellobiidae

Leuconopsis pellucidus (Cooper, 1841): Ettrick Bch (SGRDL); Fitzmaurice Bay (SGRDL, TMAG); KI (unlocalised) (WLM)

Marinula parva (Swainson, 1856): KI (unlocalised) (WLM)

Marinula xanthostoma A. Adams & H. Adams, 1855: Black Pt, Seal Bay (SGRDL); British Admiral Bch (TMAG); C Wickham (E) (SGRDL); Currie Hbr (SGRDL); Ettrick Bch (SGRDL); Fitzmaurice Bay (SGRDL, TMAG); Grassy Hbr (SGRDL); Gulchway, Stokes Pt (SGRDL); Halfmoon Bay (MHR); KI (unlocalised) (JFM, QVMAG, WLM); Lt Porky Bch (SGRDL); Naracoopa (SGRDL); Pass R Bay (TMAG); Porky Bch (SGRDL); Red Hut Pt (SGRDL); Surprise Bay (SGRDL); W coast of KI (unlocalised) (TMAG)

Trimusculidae

Trimusculus conicus Angas, 1864: Colliers Bch (SGRDL); Currie Hbr (SGRDL); Fitzmaurice Bay (TMAG); Halfmoon Bay (MHR); Sandblow Bay, Grassy Hbr (SGRDL)

CEPHALOPODA

Argonautidae

Argonauta nodosus Solander, 1786: KI (unlocalised) (KIM); Naracoopa (TMAG)

Octopodidae

Hapalochlaena maculosa (Hoyle, 1883): KI (unlocalised) (QVMAG); Naracoopa (MRG)

Octopus maorum Hutton, 1880: KI (unlocalised) (MV)

Octopus superciliosus Quoy & Gaimard, 1832: Bass Strait NE of KI, scallop survey site 01 (TMAG)

Octopus warringa Stranks, 1990: Bass Strait NE of KI, scallop survey site 02 (TMAG); Bass Strait NE of KI, scallop survey site 04 (TMAG); Currie Hbr (MRG)

Sepiidae

Sepia apama Gray, 1849: Black Pt, Seal Bay (SGRDL); Blowhole, Sea Elephant Bay (SGRDL); C Wickham (E) (SGRDL); City of Melbourne Bay (TMAG); Colliers Bch (SGRDL); Cowper Pt, Sea Elephant Bay (SGRDL); Currie Hbr (SGRDL); Disappointment Bay (SGRDL); Ettrick Bch (SGRDL, TMAG); Fitzmaurice Bay (SGRDL, TMAG); Grassy Hbr (SGRDL); Gulchway, Stokes Pt (SGRDL); KI (unlocalised) (WLM); Lavinia Bch (SGRDL, TMAG); Lt Porky Bch (SGRDL); Naracoopa (SGRDL, TMAG); Pass R Bay (TMAG); Sandblow Bay, Grassy Hbr (SGRDL); Seal Pt (SGRDL); Surprise Bay (SGRDL); Yellow Rock Bch (SGRDL, TMAG)

Sepia braggi Verco, 1907: Black Pt, Seal Bay (SGRDL); Blowhole, Sea Elephant Bay (SGRDL); City of Melbourne Bay (SGRDL); Colliers Bch (SGRDL); Cowper Pt, Sea Elephant Bay (SGRDL); Disappointment Bay (SGRDL); Grassy Hbr (SGRDL); Lavinia Bch (SGRDL); Naracoopa (SGRDL); Sandblow Bay, Grassy Hbr (SGRDL); Seal Pt (SGRDL); Yellow Rock Bch (SGRDL)

Sepia cultrata Hoyle, 1885: Ettrick Bch (SGRDL); KI (unlocalised) (WLM); Sandblow Bay, Grassy Hbr (SGRDL)

Sepia hedleyi Berry, 1918: Black Pt, Seal Bay (SGRDL); Blowhole, Sea Elephant Bay (SGRDL); City of Melbourne Bay (SGRDL, TMAG); Colliers Bch (SGRDL); Cowper Pt, Sea Elephant Bay (SGRDL); Currie Hbr (SGRDL); Disappointment Bay (SGRDL); Fitzmaurice Bay (SGRDL); Grassy Hbr (SGRDL); Lavinia Bch (SGRDL, TMAG); Naracoopa (SGRDL); Pass R Bay (TMAG); Sandblow Bay, Grassy Hbr (SGRDL); Seal Pt (SGRDL); Surprise Bay (SGRDL); Yellow Rock Bch (SGRDL, TMAG)

Sepia novaehollandiae Hoyle, 1909: Black Pt, Seal Bay (SGRDL); Blowhole, Sea Elephant Bay (SGRDL); British Admiral Bch (TMAG); City of Melbourne Bay (SGRDL, TMAG); Colliers Bch (SGRDL); Cowper Pt, Sea Elephant Bay (SGRDL); Currie Hbr (SGRDL); Disappointment Bay (SGRDL); Ettrick Bch (SGRDL); Fitzmaurice Bay (SGRDL, TMAG); Grassy Hbr (SGRDL); Gulchway, Stokes Pt (SGRDL); Lavinia Bch (SGRDL, TMAG); Lt Porky Bch (SGRDL); Naracoopa (SGRDL, TMAG); Pass R Bay (TMAG); Porky Bch (SGRDL); Sandblow Bay, Grassy Hbr (SGRDL); Surprise Bay (SGRDL); Yellow Rock Bch (SGRDL, TMAG)

Spirulidae

Spirula spirula Linnaeus, 1758: Currie Hbr (SGRDL); Fitzmaurice Bay (TMAG); KI (unlocalised) (JFM); Lavinia Bch (SGRDL); Naracoopa (KIM)