

# Midwest Region, USA

## Beginner's Guide to Moths of the Midwest - Crambids and Pyralids

Angella Moorehouse & Illinois Nature Preserve Commission

Photos: Angella Moorehouse (angella.moorehouse@illinois.gov). Produced by: Angella Moorehouse with the assistance of Alicia Diaz, Field Museum.

Identification assistance provided by: multiple sources (inaturalist.org; bugguide.net)

© Field Museum (2021) CC BY-NC 4.0. Licensed works are free to use/share/remix with attribution, but commercial use of the original work is not permitted.

[fieldguides.fieldmuseum.org]

[1330] version 1 7/2021

### About the BEGINNER'S MOTHS OF THE MIDWEST GUIDES

Most photos were taken in west-central and central Illinois; a few are from eastern Iowa and north-central Wisconsin. Nearly all were posted to identification websites: BugGuide.net and iNaturalist.org. Identification help was provided by Aaron Hunt, Steve Nanz, John and Jane Balaban, Chris Grinter, Frank Hitchell, Jason Dombroskie, William H. Taft, Jim Wiker, and Terry Harrison as well as others contributing to the websites. Attempts were made to obtain expert verifications for all photos to the field identification level, however, there will be errors. Please contact the author with all corrections. Additional assistance was provided by longtime Lepidoptera survey partner, Susan Hargrove.

The intention of these guides is to provide the means to compare photographs of living specimens of related moths from the Midwest to aid the citizen scientists with identification in the field for Bio Blitz, Moth-ers Day, and other night lighting events. A taxonomic list to all the species featured is provided at the end along with some field identification tips.

### WEBSITES PROVIDING IDENTIFICATION INFORMATION

BugGuide.net

iNaturalist.org

Mothphotographersgroup.msstate.edu

Insectsofiowa.org

centralillinoisinsects.org/weblog/resources/

### WHICH MOTH GUIDE TO USE

The moths were split into 6 groups for the purposes of creating smaller guides focusing on similar features of 1 or more superfamilies. The guides are split up thusly:

- 1) **Macromoths** – large showy moths generally ranging in size of 5-18cm; Superfamilies: Bombycoidea (royal, silkmoths, and sphinx moths), Cossoides (carpenterworm), Lasiocampoidea (lappet moths)



*Antheraea polyphemus*  
Polyphemus moth



*Prionoxystus robiniae*  
Carpenterworm moth



*Darapsa myron*  
Virginia Creeper Sphinx

- 2) **Micromoths** – tiny moths with wingspans generally <2cm the exception being the clearwing borers (*Sesioidae*) which average between 1-3cm; Other Superfamilies: *Adeloidea* (fairy moths), *Choreutidae* (metalmarks), *Epermenioides* (fringe-tufted moths), *Gelechioidea* (curve-horned moths – has greatest number of species), *Gracillarioidea* (tube moths), *Micropterigoidea* (mandibulate archaic moths), *Schreckensteinioidae* (bristle-legged moths), *Tineoidea* (clothes, carpenter, and bagworm moths), *Yponomatoidea* (ermine moths)



*Dichomeris inversella*  
Inverse Dichomeris



*Caloptilia blandella*  
Walnut Caloptilia



*Synanthedon acerni*  
Maple Callus Borer



*Atteva aurea*  
Alianthus webworm


# Midwest Region, USA

## Beginner's Guide to Moths of the Midwest - Crambids and Pyralids 2

Angella Moorehouse & Illinois Nature Preserve Commission

Photos: Angella Moorehouse (angella.moorehouse@illinois.gov). Produced by: Angella Moorehouse with the assistance of Alicia Diaz, Field Museum.

Identification assistance provided by: multiple sources (inaturalist.org; bugguide.net)

 © Field Museum (2021) CC BY-NC 4.0. Licensed works are free to use/share/remix with attribution, but commercial use of the original work is not permitted.

[fieldguides.fieldmuseum.org]

[1330] version 1 7/2021

### WHICH MOTH GUIDE TO USE (Cont.)

- 3) **Geometer Moths (Geometroidea)** – medium sized with wingspan 3-5 cm, most have angular sharp-pointed wings held open like butterflies; most larvae are “inchworms”



*Macaria multilineata*  
Many-lined Angle



*Pleuroprucha insulsaria*  
Tan Wave



*Haematopsis grataria*  
Chickweed Geometer

- 4) **Noctuids/Owlets (Noctuoidea)** – most species of any moth superfamily, medium sized with wingspan generally 2-5cm, triangular shape with stout bodies; most are nocturnal but includes some daytime pollinators: lichen, tiger, fungus, underwing, forage looper, litter, bird-dropping, dagger, wood nymph, groundling, dark owlet, earworm, flower, borer, cutworm, dart, quaker, wainscot, sawfly, looper, and prominent moths



*Catocala nuptialis*  
Married Underwing



*Acronicta vinnula*  
Delightful Dagger



*Hypena abalienalis*  
White-lined Hypena

- 5) **Pyralids and Crambid Moths (Pyraloidea)** snout moths – large group of small moths with wingspan of 1- 4 cm, head bears long upturned labial palpi or snout; Guide also includes the Superfamilies: **Drepanoidea** (hooktip moths), **Pterophoroidea** (plume moths), **Thryidoidea** (thyris moths)



*Herptogramma aeglaelis*  
Serpentine Webworm



*Chrysoteuchia topiaria*  
Cranberry Girdler

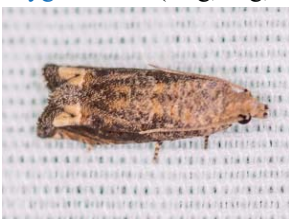


*Geina* sp.  
Plume Moth



*Dysodia ocellatana*  
Eyed Dysodia

- 6) **Tortricid Moths (Tortricidae)** – tortrix and leafroller moths – large group of small moths (often grouped with micromoths) with wingspan 1-3 cm. Most are drab with mottled and marbled brown coloration. Some (Olethreutinae) have larvae which bore into plant stems, roots, buds, or seeds; Tortricinae larvae construct leaf rolls; Guide also includes the Superfamily: **Zygaenoidea** (slug, hag, skiff, skeletonizer moths)



*Epiblema abruptana*  
Abrupt Epiblema



*Choristoneura roseaceana*  
Oblique-banded Leafroller



*Apoda y-inversum*  
Yellow-collared Slug Moth




# Midwest Region, USA

## Beginner's Guide to Moths of the Midwest - Crambids and Pyralids 3

Angella Moorehouse & Illinois Nature Preserve Commission

Photos: Angella Moorehouse (angella.moorehouse@illinois.gov). Produced by: Angella Moorehouse with the assistance of Alicia Diaz, Field Museum.  
 Identification assistance provided by: multiple sources (inaturalist.org; bugguide.net)

 © Field Museum (2021) CC BY-NC 4.0. Licensed works are free to use/share/remix with attribution, but commercial use of the original work is not permitted.

[fieldguides.fieldmuseum.org] [1330] version 1 7/2021



**1** *Elophila oblitalis*  
CRAMBIDAE  
Water-lily Leafcutter



**2** *Elophila tinealis*  
CRAMBIDAE  
Black Duckweed Moth



**3** *Petrophila fulicalis*  
CRAMBIDAE  
Feather-edged Petrophila



**4** *Urola nivalis*  
CRAMBIDAE  
Snowy Urola Moth



**5** *Agriphila vulgivagellus*  
CRAMBIDAE  
Vagabond Crambus



**6** *Chrysoteuchia topiaries*  
CRAMBIDAE  
Cranberry Girdler Moth



**7** *Crambus agitellus*  
CRAMBIDAE  
Double-banded Grass-veneer



**8** *Crambus laqueatellus*  
CRAMBIDAE  
Eastern Grass-veneer



**9** *Euchromius ocellus*  
CRAMBIDAE  
Grass-veneer



**10** *Fissicrambus mutabilis*  
CRAMBIDAE  
Changeable Grass-veneer



**11** *Microcrambus biguttellus*  
CRAMBIDAE  
Gold-stripe Grass-veneer



**12** *Microcrambus elegans*  
CRAMBIDAE  
Elegant Grass-veneer



**13** *Neodactria* sp.  
CRAMBIDAE  
Grass-veneer



**14** *Parapediasia decorellus*  
CRAMBIDAE  
Graceful Grass-veneer



**15** *Parapediasia teterrellus*  
CRAMBIDAE  
Bluegrass Webworm



**16** *Pediasia trisecta*  
CRAMBIDAE  
Sod Webworm



**17** *Aethiophysa invisalis*  
CRAMBIDAE  
Invisible Crambid



**18** *Dicymolomia julianalis*  
CRAMBIDAE  
Julia's Dicymolomia



**19** *Eustixia pupula*  
CRAMBIDAE  
Spotted Peppergrass Moth



**20** *Glaphyria sesquialis*  
CRAMBIDAE  
White-roped Glaphyria




# Midwest Region, USA

## Beginner's Guide to Moths of the Midwest - Crambids and Pyralids 4

Angella Moorehouse & Illinois Nature Preserve Commission

Photos: Angella Moorehouse (angella.moorehouse@illinois.gov). Produced by: Angella Moorehouse with the assistance of Alicia Diaz, Field Museum.  
 Identification assistance provided by: multiple sources (inaturalist.org; bugguide.net)

 © Field Museum (2021) CC BY-NC 4.0. Licensed works are free to use/share/remix with attribution, but commercial use of the original work is not permitted.

[fieldguides.fieldmuseum.org] [1330] version 1 7/2021



**21** *Lipocosmodes fuliginosalis*  
CRAMBIDAE  
Sooty Lipocosmodes



**22** *Nephrogramma remiculalis*  
CRAMBIDAE  
White-spotted Nephrogramma



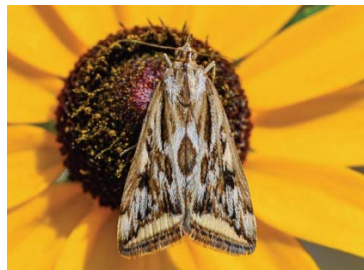
**23** *Achyra rantalis*  
CRAMBIDAE  
Garden Webworm



**24** *Anania cf. plectilis*  
CRAMBIDAE  
Crowned Phlyctaenia



**25** *Helvibotys / Neohelvibotys* sp.  
CRAMBIDAE  
Crambid Moth



**26** *Loxostege cereralis*  
CRAMBIDAE  
Alfalfa Webworm



**27** *Ostrina nubilalis*  
CRAMBIDAE  
European Corn Borer



**28** *Ostrina penitalis*  
CRAMBIDAE  
American Lotus Borer



**29** *Perispasta caeculalis*  
CRAMBIDAE  
Titian Peale's Moth



**30** *Pyrausta acronialis*  
CRAMBIDAE  
Mint-loving Pyrausta



**31** *Pyrausta bicoloralis*  
CRAMBIDAE  
Bicolored Pyrausta



**32** *Pyrausta generosa*  
CRAMBIDAE  
Generous Pyrausta



**33** *Pyrausta cf. inveterascalis*  
CRAMBIDAE  
Pyrausta Moth



**34** *Pyrausta laticlavata*  
CRAMBIDAE  
Southern Purple Mint



**35** *Pyrausta orphialis*  
CRAMBIDAE  
Orange Mint Moth



**36** *Pyrausta signatalis*  
CRAMBIDAE  
Raspberry Pyrausta



**37** *Sitochroa chortalis*  
CRAMBIDAE  
Dimorphic Sitochroa



**38** *Sitochroa palealis*  
CRAMBIDAE  
Carrot Seed Moth



**39** *Sericopraga externalis*  
CRAMBIDAE  
Falcate Sericopraga Moth



**40** *Crocidophora tuberculalis*  
CRAMBIDAE  
Pale-winged Crocidophora




# Midwest Region, USA

## Beginner's Guide to Moths of the Midwest - Crambids and Pyralids 5

Angella Moorehouse & Illinois Nature Preserve Commission

Photos: Angella Moorehouse (angella.moorehouse@illinois.gov). Produced by: Angella Moorehouse with the assistance of Alicia Diaz, Field Museum.  
 Identification assistance provided by: multiple sources (inaturalist.org; bugguide.net)

 © Field Museum (2021) CC BY-NC 4.0. Licensed works are free to use/share/remix with attribution, but commercial use of the original work is not permitted.

[fieldguides.fieldmuseum.org] [1330] version 1 7/2021



41 *Mimoschintia rufofascialis*  
CRAMBIDAE  
Rufous-banded Crambid



42 *Microtheoris ophionalis*  
CRAMBIDAE  
Yellow-veined Moth



43 *Eudonia strigalis*  
CRAMBIDAE  
Striped Eudonia Moth



44 *Scoparia biplagialis*  
CRAMBIDAE  
Double-striped Scoparia



45 *Scoparia* sp. 2  
CRAMBIDAE  
Scoparia moth



46 *Anageshna primordialis*  
CRAMBIDAE  
Yellow-spotted webworm



47 *Blepharomastix ranalis*  
CRAMBIDAE  
Hollow-spotted Blephromastix



48 *Desmia funeralis/maculalis*  
CRAMBIDAE  
Grape Leaffolder Moth



49 *Herpetogramma aeglealis*  
CRAMBIDAE  
Serpentine Webworm



50 *Herpetogramma abdominalis*  
CRAMBIDAE  
Herpetogramma Moth



51 *Herpetogramma bipunctalis*  
CRAMBIDAE  
Two-spotted Herpetogramma



52 *Herpetogramma pertextalis*  
CRAMBIDAE  
Bold-feathered Grass Moth



53 *Hymenia perspectalis*  
CRAMBIDAE  
Spotted Beet Webworm



54 *Lygropia rivulalis*  
CRAMBIDAE  
Bog Lygropia Moth



55 *Nomophila nearctica*  
CRAMBIDAE  
Lucerne Moth



56 *Palpita magniferalis*  
CRAMBIDAE  
Splendid Palpita



57 *Pantographa limata*  
CRAMBIDAE  
Basswood Leafroller



58 *Spilomelinae* cf. *Polygrammodes flavidalis*  
CRAMBIDAE  
Ironweed Root Borer



59 *Psara obscuralis*  
CRAMBIDAE  
Obscure Psara Moth



60 *Spoladea recurvalis*  
CRAMBIDAE  
Hawaiian Beet Webworm




# Midwest Region, USA

## Beginner's Guide to Moths of the Midwest - Crambids and Pyralids 6

Angella Moorehouse & Illinois Nature Preserve Commission

Photos: Angella Moorehouse (angella.moorehouse@illinois.gov). Produced by: Angella Moorehouse with the assistance of Alicia Diaz, Field Museum.  
 Identification assistance provided by: multiple sources (inaturalist.org; bugguide.net)

 © Field Museum (2021) CC BY-NC 4.0. Licensed works are free to use/share/remix with attribution, but commercial use of the original work is not permitted.

[fieldguides.fieldmuseum.org] [1330] version 1 7/2021



**61** *Udea rubigalis*  
CRAMBIDAE  
Celery Leaf-tier Moth



**62** *Diasemiodes janassialis*  
CRAMBIDAE  
Pied Shawl Moth



**63** *Arta statalis*  
PYRALIDAE  
Posturing Arta Moth



**64** *Clydonopteron sacculana*  
PYRALIDAE  
Trumpet Vine Moth



**65** *Condylolomia participalis*  
PYRALIDAE  
Drab Condylolomia Moth



**66** *Tosale oviplagalis*  
PYRALIDAE  
Dimorphic Tosale



**67** *Epipascha superatalis*  
PYRALIDAE  
Dimorphic Macalla



**68** *Macalla zelleri*  
PYRALIDAE  
Zeller's Macalla



**69** *Oneida lunulalis*  
PYRALIDAE  
Orange-tufted Oneida



**70** *Pococera militella*  
PYRALIDAE  
Sycamore Webworm Moth



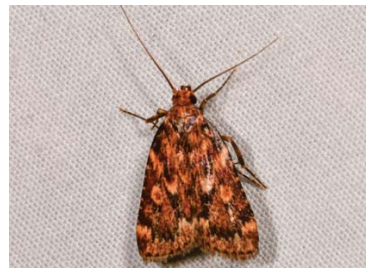
**71** *Pococera* sp. 2  
PYRALIDAE  
Pococera Webworm Moth



**72** *Pococera* sp. 3  
PYRALIDAE  
Pococera Webworm Moth



**73** *Acrobasis demotella*  
PYRALIDAE  
Walnut Shoot Moth



**74** *Aglossa cuprina*  
PYRALIDAE  
Grease Moth



**75** *Canarsia ulmiarrosorella*  
PYRALIDAE  
Elm Leaf-tier Moth



**76** *Elasmopalpus lignosellus*  
PYRALIDAE  
Lesser Cornstalk Borer



**77** *Ephestiodes infimella*  
PYRALIDAE  
Reddish Ephestiodes Moth



**78** *Eulogia ochrifrontella*  
PYRALIDAE  
Broad-banded Eulogia



**79** *Hypsopygia costalis*  
PYRALIDAE  
Clover Hayworm Moth



**80** *Hypsopygia olinalis*  
PYRALIDAE  
Yellow-fringed Dolichomia



# Midwest Region, USA

## Beginner's Guide to Moths of the Midwest - Crambids and Pyralids

Angella Moorehouse & Illinois Nature Preserve Commission

Photos: Angella Moorehouse (angella.moorehouse@illinois.gov). Produced by: Angella Moorehouse with the assistance of Alicia Diaz, Field Museum.

Identification assistance provided by: multiple sources (inaturalist.org; bugguide.net)

© Field Museum (2021) CC BY-NC 4.0. Licensed works are free to use/share/remix with attribution, but commercial use of the original work is not permitted.

[fieldguides.fieldmuseum.org]

[1330] version 1 7/2021



81 *Phycitini* cf. *Laetilia coccidivo*  
PRYALIDAE  
Scale-feeding Snout Moth



82 *Meroptera cviatella*  
PRYALIDAE  
Popular Bud Borer Moth



83 *Moodna ostrinella*  
PRYALIDAE  
Darker Moodna Moth



84 *Moodna pallidstrinella*  
PRYALIDAE  
Paler Moodna Moth



85 *Sciota celidella*  
PRYALIDAE  
Hackberry Leafroller Moth



86 *Sciota uvinella*  
PRYALIDAE  
Sweetgum Leafroller Moth



87 *Sciota* cf. *virgatella*  
PRYALIDAE  
Black-spotted Leafroller



88 *Tlascala reductella*  
PRYALIDAE  
Tlascala Moth



89 *Varneria postremella*  
PRYALIDAE  
Rusty Varneria Moth



90 *Oreta rosea*  
DREPANIDAE Rose  
Hooktip Moth



91 *Pseudothyatira cymatophoroides*  
DREPANIDAE  
Tufted Thyatirine



92 *Geina* sp.  
PTEROPHORIDAE  
Plume Moth



93 *Emmelina* cf. *monodactyla*  
PTEROPHORIDAE  
Morning Glory Plume Moth



94 *Hellinsia* sp.  
PTEROPHORIDAE  
Plume Moth



95 *Dysodia ocolatana*  
THYRIDIDAE  
Eyed Dysodia



96 *Thyris sepulcharis*  
THYRIDIDAE  
Mournful Thyris

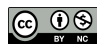
# Midwest Region, USA

## Beginner's Guide to Moths of the Midwest - Crambids and Pyralids

### Angella Moorehouse & Illinois Nature Preserve Commission

8

Photos: Angella Moorehouse (angella.moorehouse@illinois.gov). Produced by: Angella Moorehouse with the assistance of Alicia Diaz, Field Museum.  
Identification assistance provided by: multiple sources (inaturalist.org; bugguide.net)

 © Field Museum (2021) CC BY-NC 4.0. Licensed works are free to use/share/remix with attribution, but commercial use of the original work is not permitted.

[fieldguides.fieldmuseum.org]

[1330] version 1 7/2021

#### TAXONOMIC LIST OF MOTHS INCLUDED IN FIELD GUIDE

This list attempts to depict the organization of the photos by taxonomic grouping. While all moths in the photos have assigned superfamilies and families not all of those are classified to subfamily, tribe or subtribe. Where these classifications are available, they were used to organize the photos. Taxonomic classification was obtained from iNaturalist and BugGuide.

SUPERFAMILY: Pyraloidea

FAMILY: Crambidae

SUBFAMILY: Acentropinae

TRIBE: Nymphalini

1 *Elophila oblitalis* Water Lily Leafcutter: common; thin wings mottled with dark brown, tan, white, and orange often held half open

2 *Elophila tinealis* Black Duckweed Moth: small black moth with some fine white speckling, fringed wingtips

3 *Petrophila fulicalis* Feather-edged Petrophila: mottled light beige to yellowish tan, wings held half open revealing orange and back dashed border on underwings

SUBFAMILY: Crambinae

TRIBE: Argyiini

4 *Urola nivalis* Snowy Urola: common; shiny white with orange-rust fringed wingtips

TRIBE: Crambini

5 *Agriphila vulgivaellus* Vagabond Sod Webworm: skinny with rolled wings; buff coloration with fine speckling, elongated fuzzy snout

6 *Chrysoteuchia topiarius* Cranberry Girdler: white and peach coloration with rust or brown stripes; wingtips bordered in gold

7 *Crambus agitelus* Double-banded Grass-veneer: orange coloration with bold white stripe across sides

8 *Crambus laqueatellus* Eastern Grass-veneer: orange to medium brown-gray with 1 white stripes along sides

9 *Euchromius ocellus* Grass-veneer: buffy peach color with 2 rows of horizontal strips across the middle of the forewings and black dashed medial line along terminal edge of forewings

10 *Fissicrambus mutabilis* Changeable Grass-veneer: dull gray-beige coloration often with medial dark spot on each side of rolled wings

11 *Microcrambus biguttellus* Gold-stripe Grass-veneer: shiny white with dark medial spots and gold horizontal striping along terminal end of forewings

12 *Microcrambus elegans* Elegant Grass-veneer: common; white with rusty brown markings, white terminal band edged in rusty brown

13 *Neodactria* sp. Crambid Moth: mottled light brown-beige; may have horizontal stipes medially

14 *Parapediasia decorellus* Graceful Grass-veneer: whitish head blending to warm tan terminally

15 *Parapediasia teterrellus* Bluegrass Webworm: light gray-brown

16 *Pediasia trisecta* Sod Webworm: buffy tan with dark brown terminal streaks

SUBFAMILY: Glaphyriinae

17 *Aethiophysa invisalis* Invisible Crambid: triangular shaped; golden yellowish-orange with 2 curved horizontal white stripes across forewings

18 *Dicymolomia julianalis* Julia's Dicymolomia: rusty orange and white-gray diffuse horizontal bands; wings held partially open

19 *Eustixia pupula* Spotted Peppergrass moth: white narrowly triangular shape with many black dots

20 *Glaphyria sesquiritialis* White-roped Glaphyria: golden, lemon, or pale yellow with 2 curved horizontal white stripes across forewing

21 *Lipocosmodes fuliginosalis* Sooty Lipocosmodes: white with very large dark brown across all but head, thorax, and the edges of the forewings

22 *Nephrogramma reniculalis* White-spotted Nephrogramma: medium brown triangular with white spots and twin crescents on center of forewing

SUBFAMILY: Pyraustinae

23 *Achyra rantalis* Garden Webworm: warm buffy tan to brown with darker diffuse central band with 2 dark spots across forewing

24 *Anania plectilis* Crowned Phlyctaenia: warm brown with lacy pale yellow spots and speckles across forewings; wings held open like butterflies

25 *Helvibotys/Neohelvibotys* sp. Crambid Moth: golden yellow, triangular shape, with 2 horizontal wavy stripes across forewings

26 *Loxostege cereralis* Alfalfa Webworm: yellow, light brown, and dark brown pattern on forewings; pale horizontal band along terminal edge of forewing

27 *Ostrinia nubilalis* European Corn Borer: golden buffy yellow with peach or rose mottling in females; males more grayish brown



# Midwest Region, USA


## Beginner's Guide to Moths of the Midwest - Crambids and Pyralids

9

Angella Moorehouse & Illinois Nature Preserve Commission

Photos: Angella Moorehouse (angella.moorehouse@illinois.gov). Produced by: Angella Moorehouse with the assistance of Alicia Diaz, Field Museum.

Identification assistance provided by: multiple sources (inaturalist.org; bugguide.net)

 © Field Museum (2021) CC BY-NC 4.0. Licensed works are free to use/share/remix with attribution, but commercial use of the original work is not permitted.

[fieldguides.fieldmuseum.org]

[1330] version 1 7/2021

### TAXONOMIC LIST OF CRAMBIDS AND PYRALIDS MOTHS INCLUDED IN FIELD GUIDE (Cont.)

- 28 *Ostrinia penitalis* American Lotus Borer: golden yellow to orangish with gray mottled zig zag horizontal striping at terminal base of forewings
- 29 *Perispasta caecualis* Titian Peale's Moth: shiny chocolate brown with somewhat scalloped wings, distinct white spots in center of forewing and along terminal edge of wings
- 30 *Pyrausta acronalis* Mint-loving Pyrausta: golden orange-yellow and hot pink patterned
- 31 *Pyrausta bicoloralis* Bicolored Pyrausta: golden orange top half and dark pink-maroon lower wings
- 32 *Pyrausta generosa* Generous Pyrausta: rusty brown with pale yellow to orange spots on forewing and hindwing band
- 33 *Pyrausta inveterascalis* Pyrausta Moth: dark pinkish red with horizontal zig zag stripes across forewing
- 34 *Pyrausta laticlavata* Southern Purple Mint Moth: bright golden yellow outlined and patterned with bold pink
- 35 *Pyrausta orphisalis* Orange Mint Moth: orange head and thorax, dark pinkish red forewings with some orange spotting
- 36 *Pyrausta signatalis* Raspberry Pyrausta: orange head and thorax, bright pink forewings with horizontal zig zag stripes
- 37 *Sitochroa chortalis* Dimorphic Sitochroa: warm tan to buffy yellowish-brown with fine mottling pattern
- 38 *Sitochroa palealis* Carrot Seed Moth: cream to pale yellow coloration with central brown spots on forewing; often seen on flowers
- 39 *Sericoplaga externalis* Falcate Sericoplaga: orangish brown with scalloped wing edges and horizontal wavy stripes across forewing
- TRIBE: Pyraustini
- 40 *Crocidophora tuberculalis* Pale-winged Crocidophora: shiny golden yellow with horizontal wavy stripes across forewing
- SUBFAMILY: Odontiinae
- TRIBE: Eurrhyniini
- 41 *Mimoschinia rufofascialis* Rufous-banded Crambid: superficially resembles *Schinia* (flower owlet moths) but lacks the fuzzy thorax, has crambid "snout"
- TRIBE: Odontiini
- 42 *Microtheoris ophionalis* Yellow-veined Moth: uncommon; rufous coloration with distinct yellow veins and outer stripe along the terminal edge of the forewing
- SUBFAMILY: Scopariinae
- 43 *Eudonia strigalis* Striped Eudonia: Eudonia and Scoparia moths look very similar; grayish with dark brown spots and white speckling, some with fine white horizontal stripes on forewings
- 44 *Scoparia biplagiata* Double-striped Scoparia
- 45 *Scoparia* sp. 2 Scoparia Moth
- SUBFAMILY: Spilomelinae
- 46 *Anageshna primordialis* Yellow-spotted Webworm: warm brown with pale yellow wavy horizontal stripes and markings; often hold wings open like butterflies
- 47 *Blepharomastix ranalis* Hollow-spotted Blepharomastix: pale cream colored with dark chocolate brown wavy horizontal stripes across the forewings; often with circular spots on the central leading edge of the wing
- 48 *Desmia funeralis/maculalis* Grape Leafroller: underside view necessary for species determination; dark brown with 6 to 8 white spots on forewing; narrow wings held wide open
- 49 *Herpetogramma aeglealis* Serpentine Webworm: coppery tan with pale yellow and dark brown spots and horizontal wavy dashes across forewing; wings held open
- 50 *Herpetogramma abdominalis* Herpetogramma Moth: shiny cream to pale yellow color with darker brown horizontal dashes across forewing; wings held open
- 51 *Herpetogramma bipunctalis* Two-spotted Herpetogramma: shiny light brown to tan with 2 small spots on outer forewing; wings held open
- 52 *Herpetogramma pertextalis* Bold-feathered Grass Moth: pale yellowish tan with distinct wavy brown horizontal stripes across forewing; wings held open
- 53 *Hymenia perspectalis* Spotted Beet Webworm: warm chocolate brown with bold white connected dashes horizontal across forewing; wings held open; common in fall
- 54 *Lygropia rivulalis* Bog Lygropia: shiny cream to yellow-tan color with bold dark brown web-like pattern and white spots on center of forewing
- 55 *Nomophila nearctica* Lucerne Moth: very common; narrow winged, gray-tan color with darker brown horizontal marks extending from leading edge of forewing partway across
- 56 *Palpita magniferalis* Splendid Palpita: tan with bold white and chocolate brown mottling; forewings held partially open; underwings uniformly light brown
- 57 *Pantographa limata* Basswood Leafroller: pale yellow with white and rosy brown pattern blending to all rosy brown color on lower forewings; wings held open



# Midwest Region, USA


## Beginner's Guide to Moths of the Midwest - Crambids and Pyralids

# 10

Angella Moorehouse & Illinois Nature Preserve Commission

Photos: Angella Moorehouse (angella.moorehouse@illinois.gov). Produced by: Angella Moorehouse with the assistance of Alicia Diaz, Field Museum.

Identification assistance provided by: multiple sources (inaturalist.org; bugguide.net)

 © Field Museum (2021) CC BY-NC 4.0. Licensed works are free to use/share/remix with attribution, but commercial use of the original work is not permitted.

[fieldguides.fieldmuseum.org]

[1330] version 1 7/2021

### TAXONOMIC LIST OF CRAMBIDS AND PYRALIDS MOTHS INCLUDED IN FIELD GUIDE (Cont.)

58 *Polygrammodes flavidalis* Ironweed Root Borer Moth: pale cream to yellow with rusty brown broken horizontal stripes across forewing; wings held open

59 *Psara obscuralis* Obscure Psara Moth: shiny coppery tan to warm brown, with darker brown broken wavy horizontal stripes across forewing

60 *Spoladea recurvalis* Hawaiian Beet Webworm: reddish brown with bold white band across medial portion of forewings and white crescents along the leading edge near the wing tips

61 *Udea rubigalis* Celery Leaf-tier: warm orange-brown to tan, triangular shape, wavy horizontal stripes and circular spots on forewing

TRIBE: Nomophilini

62 *Diasemiodes janassialis* Pied Shawl Moth: black color with diagonal white slash marks horizontal across forewings; holds wings open

FAMILY: Pyralidae

SUBFAMILY: Chrysauginae

63 *Arta statalis* Posturing Arta Moth: wings held in triangular shape; legs hold body “push-up” style

64 *Clydonopteron sacculana* Trumpet Vine Moth: snout curved and forked, bumpy outline to wings; rusty brown coloration with white dashes and pale yellow-tan terminal band on forewings

65 *Condylolomia participalis* Drab Condylolomia: tan head and thorax generally with dull tan forewings (featured photo is uncommonly bright-colored); legs hold body “push-up” style

66 *Tosale oviplagalis* Dimorphic Tosale: light rosy brown with wide rusty central band across center of forewings; tip of abdomen generally curved upwards

SUBFAMILY: Epipaschiinae

67 *Epipaschia superatalis* Dimorphic Macalla: triangular shaped with top portion pale gray to olive-gray; lower band rusty brown; abdomen may be held in upward curve

68 *Macalla zelleri* Zeller's Macalla: chocolate brown with pale gray central band across center of forewings; abdomen generally curved upwards

69 *Oneida lunulalis* Orange-tufted Oneida: mostly drab gray to gray-tan with bold dark brown and orange markings on lateral part of forewings

70 *Pococera militella* Sycamore Webworm: Pococera are a difficult group to identify; somewhat triangular with contrasting light and dark browns, whites, sometimes peach with wavy horizontal bands across forewings

71 *Pococera* sp. 2 Pococera Webworm

72 *Pococera* sp. 3 Pococera Webworm

SUBFAMILY: Phycitinae

TRIBE: Phycitini

73 *Acrobasis demotella* Walnut Shoot Moth: narrow winged; top half separated by thin white band, top white to rust, lower portion slate gray

74 *Aglossa cuprina* Grease Moth: warm brown with yellow spotting; shiny grease-like sheen

75 *Canarsia ulmiarrosorella* Elm Leaf-tier: pale brownish gray, narrow with wings curled under; white horizontal zig zag pattern across center of forewings

76 *Elasmopalpus lignoselus* Lesser Cornstalk Borer: narrow with wings curled under; orangish tan sides with slate gray over back

77 *Ephesiodes infimella* Reddish Ephesiodes: rosy gray color with darker central band; narrow with wings curled under

78 *Eulogia ochrifrontella* Broad-banded Eulogia: upper 2/3s deep rose-pink followed by dark brown band and gray on terminal tips of forewings; narrow wings

79 *Hypsopygia costalis* Clover Hayworm: dark pink-rose color with 2 pairs of golden yellow marks along leading edge of forewing and a fringe of yellow along the terminal edge of wings

80 *Hypsopygia olinalis* Yellow-fringed Dolichimim: dull dark rose color with 2 dark horizontal lines across forewing; 2 pairs of golden yellow marks along leading edge of wing; may have golden yellow terminal fringe

81 *Laetilia coccidivo* Scale-feeding Snout Moth: mottled gray-brown with spiked shoulders and stiff snout

82 *Meroptera civiatella* Popular Bud Borer: narrow wings curled under; orangish tan color with central black band and grayish white on posterior

83 *Moodna ostrinella* Darker Moodna: narrow wings curled under, noticeable snout, shiny rose coloration towards head followed by white medial band, dark brown-gray posterior, rosy band along tips of forewings

84 *Moodna pallidostarinella* Paler Moodna: narrow wings curled under, noticeable snout; shiny orange front with white medial band and medium brown posterior

85 *Sciota celtidella* Hackberry Leafroller: narrow wings curled under; peach head, shoulder and on center of back; rest of forewings mottled dark brown and gray

86 *Sciota winella* Sweetgum Leafroller: narrow wings curled under; silvery gray with white and rust medial bands across forewings



# Midwest Region, USA

## Beginner's Guide to Moths of the Midwest - Crambids and Pyralids

### Angella Moorehouse & Illinois Nature Preserve Commission

# 11

Photos: Angella Moorehouse (angella.moorehouse@illinois.gov). Produced by: Angella Moorehouse with the assistance of Alicia Diaz, Field Museum.  
Identification assistance provided by: multiple sources (inaturalist.org; bugguide.net)



© Field Museum (2021) CC BY-NC 4.0. Licensed works are free to use/share/remix with attribution, but commercial use of the original work is not permitted.

[fieldguides.fieldmuseum.org]

[1330] version 1 7/2021

#### TAXONOMIC LIST OF CRAMBIDS AND PYRALIDS MOTHS INCLUDED IN FIELD GUIDE (Cont.)

87 *Sciota virgatella* Black-spotted Leafroller: narrow wings curled under; rosy gray-brown with black zig zag medial bands and spots across forewing

88 *Tlascala reductella* Tlascala Moth: narrow wings curled under; rosy pink head and shoulder with dark brown/black medial band and white to pale gray posterior

89 *Varneria postremella* Rusty Varneria: narrow wings curled under; deep rufous forewings

SUPERFAMILY: Drepanoidea

FAMILY: Drepanidae

SUBFAMILY: Drepaninae

90 *Oreta rosea* Rose Hooktip: larger open winged, lemon yellow often with rosy pink on upper 2/3s of forewings; wings hook at the tips

SUBFAMILY: Thyatirinae

TRIBE: Habrosynini

91 *Pseudothyatira cymatophoroides* Tufted Thyatrine: wings held open; warm

SUPERFAMILY: Pterophoroidea

FAMILY: Pterophoridae

SUBFAMILY: Pterophorinae – Plume moths have skinny bodies and skinny wings that are held out laterally with a 90 angle between the wing and body; they are frequent flower visitors, all are difficult to identify to species

TRIBE: Platyptillini

92 *Geina* sp. Plume Moth: rust coloration with ample white spotting TRIBE: Pterophorini

93 *Emmelina monodactyla* Morning Glory Plume Moth: generally pale tan to yellow coloration

94 *Hellinsia* sp. Pale Plume Moth: pale yellow body with light tan wings

SUPERFAMILY: Thyridoidea

FAMILY: Thyrididea

SUBFAMILY: Thyridinae

95 *Dysodia oclatana* Eyed Dysodia: crinkled wings held partially open; yellow to orangish-brown with translucent white “windows” on the center of the forewing; often seen visiting flowers

96 *Thyris sepulchralis* Mournful Thyris: crinkled wings held partially open; black with abundant white spotting throughout