

Manabí, Ecuador

Amphibians and Reptiles of Recinto Santiago Pichincha

Amarú Ramón Salcedo¹, María Belén Garzón¹, Edison García², Paolo Piedrahita¹

¹Escuela Superior Politécnica del Litoral (ESPOL), ²Arbofino

Photos: Amarú Ramón (AR), Dominic Ziegler (DZ), Javier Chica (JC), Edison García (EG). Produced by Amarú Ramón [ramon@espol.edu.ec], María Belén Garzón [mbgarzonspol.edu.ec@espol.edu.ec], Paolo Piedrahita [ppiedra@espol.edu.ec], Edison García [edison@arbofino.ec].

(M) Male, (F) Female, (E) Eggs, (Juv.) Juvenil. Conservation status: Least concern (LC), Near threatened (NT), Not evaluated (NE), Vulnerable (VU).

Note: all organisms were returned to nature after photos were taken.

© Field Museum (2023) CC BY-NC 4.0. Licensed works are free to use/share/
remix with attribution, but commercial use of the original work is not permitted.

[fieldguides.fieldmuseum.org]

[1613] version 1 7/2023



1 *Rhinella horribilis* (M)
BUFONIDAE
LC AR



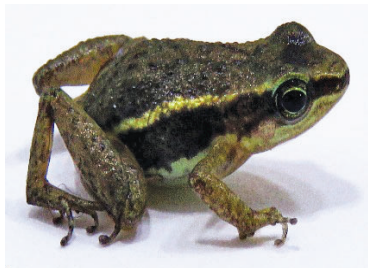
2 *Rhinella horribilis* (F)
BUFONIDAE
LC AR



3 *Rhinella horribilis* (Juv.)
BUFONIDAE
LC AR



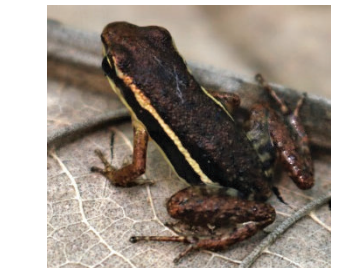
4 *Rhinella horribilis* (Juv.)
BUFONIDAE
LC AR



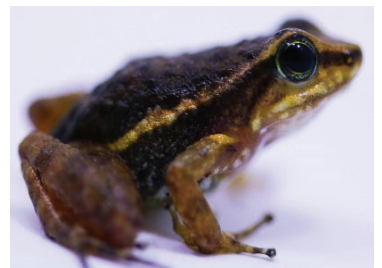
5 *Epipedobates machalilla* (EN)
DENDROBATIDAE
LC AR



6 *Epipedobates machalilla* (EN)
DENDROBATIDAE
LC AR



7 *Epipedobates machalilla* (EN)
DENDROBATIDAE
LC AR



8 *Hyloxalus infraguttatus* (EN)
DENDROBATIDAE
VU AR



9 *Hyloxalus infraguttatus* (EN)
DENDROBATIDAE
VU AR



10 *Boana rosenbergi*
HYLIDAE
LC AR



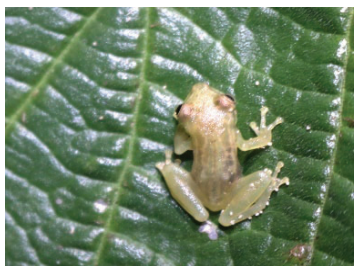
11 *Boana rosenbergi*
HYLIDAE
LC AR



12 *Boana rosenbergi*
HYLIDAE
LC JC



13 *Scinax quinquesciatus*
HYLIDAE
LC AR



14 *Scinax quinquesciatus* (Juv.)
HYLIDAE
LC AR



15 *Scinax tsachila* (EN)
HYLIDAE
LC AR



16 *Scinax tsachila* (EN)
HYLIDAE
LC AR

Manabí, Ecuador

Amphibians and Reptiles of Recinto Santiago Pichincha

Amarú Ramón Salcedo¹, María Belén Garzón¹, Edison García², Paolo Piedrahita¹

¹Escuela Superior Politécnica del Litoral (ESPOL), ²Arbofino

Photos: Amarú Ramón (AR), Dominic Ziegler (DZ), Javier Chica (JC), Edison García (EG). Produced by Amarú Ramón [ramon@espol.edu.ec], María Belén Garzón [mbgarzonspol.edu.ec@espol.edu.ec], Paolo Piedrahita [ppiedra@espol.edu.ec], Edison García [edison@arbofino.ec].

(M) Male, (F) Female, (E) Eggs, (Juv.) Juvenil. Conservation status: Least concern (LC), Near threatened (NT), Not evaluated (NE), Vulnerable (VU).

Note: all organisms were returned to nature after photos were taken.

© Field Museum (2023) CC BY-NC 4.0. Licensed works are free to use/share/
remix with attribution, but commercial use of the original work is not permitted.

[fieldguides.fieldmuseum.org]

[1613] version 1 7/2023



17 *Scinax tsachila* (EN)
HYLIDAE
LC AR



18 *Scinax tsachila* (EN)
HYLIDAE
LC AR



19 *Smilisca phaeota*
HYLIDAE
LC AR



20 *Smilisca phaeota*
HYLIDAE
LC AR



21 *Trachycephalus jordani*
HYLIDAE
LC AR



22 *Trachycephalus jordani*
HYLIDAE
LC AR



23 *Trachycephalus quadrangulum*
HYLIDAE
LC AR



24 *Trachycephalus quadrangulum*
HYLIDAE
LC AR



25 *Engystomops pustulatus*
LEPTODACTYLIDAE
LC AR



26 *Engystomops pustulatus*
LEPTODACTYLIDAE
LC AR



27 *Leptodactylus labrosus*
LEPTODACTYLIDAE
LC AR



28 *Leptodactylus ventrimaculatus*
LEPTODACTYLIDAE
LC AR



29 *Leptodactylus ventrimaculatus*
LEPTODACTYLIDAE
LC AR



30 *Rana bwana*
RANIDAE
NT AR



31 *Rana bwana*
RANIDAE
NT AR



32 *Barycholos pulcher*
STRABOMANTIDAE
LC AR

Manabí, Ecuador

Amphibians and Reptiles of Recinto Santiago Pichincha

Amarú Ramón Salcedo¹, María Belén Garzón¹, Edison García², Paolo Piedrahita¹

¹Escuela Superior Politécnica del Litoral (ESPOL), ²Arbofino

Photos: Amarú Ramón (AR), Dominic Ziegler (DZ), Javier Chica (JC), Edison García (EG). Produced by Amarú Ramón [ramon@espol.edu.ec], María Belén Garzón [mbgarzonspol.edu.ec@espol.edu.ec], Paolo Piedrahita [ppiedra@espol.edu.ec], Edison García [edison@arbofino.ec].

(M) Male, (F) Female, (E) Eggs, (Juv.) Juvenil. Conservation status: Least concern (LC), Near threatened (NT), Not evaluated (NE), Vulnerable (VU).

Note: all organisms were returned to nature after photos were taken.

© Field Museum (2023) CC BY-NC 4.0. Licensed works are free to use/share/remix with attribution, but commercial use of the original work is not permitted.

[fieldguides.fieldmuseum.org]

[1613] version 1 7/2023



33 *Barycholos pulcher*
STRABOMANTIDAE

LC AR



34 *Barycholos pulcher*
STRABOMANTIDAE

LC AR



35 *Craugastor longirostris*
STRABOMANTIDAE

LC AR



36 *Craugastor longirostris*
STRABOMANTIDAE

LC AR



37 *Craugastor longirostris*
STRABOMANTIDAE

LC AR



38 *Pristimantis achatinus*
STRABOMANTIDAE

LC AR



39 *Pristimantis achatinus*
STRABOMANTIDAE

LC AR



40 *Pristimantis walkeri* (EN)
STRABOMANTIDAE

LC AR



41 *Amphisbaena varia*
AMPHISBAENIDAE

LC AR



42 *Amphisbaena varia*
AMPHISBAENIDAE

LC AR



43 *Amphisbaena varia*
AMPHISBAENIDAE

LC AR



44 *Basiliscus galeritus*
IGUANIDAE: CORYTOPHANINAE

LC DZ



45 *Basiliscus galeritus*
IGUANIDAE: CORYTOPHANINAE

LC AR



46 *Anolis binotatus*
IGUANIDAE: DACTYLOINAE

LC AR



47 *Anolis binotatus*
IGUANIDAE: DACTYLOINAE

NT AR



48 *Anolis binotatus*
IGUANIDAE: DACTYLOINAE

LC AR

Manabí, Ecuador

Amphibians and Reptiles of Recinto Santiago Pichincha

Amarú Ramón Salcedo¹, María Belén Garzón¹, Edison García², Paolo Piedrahita¹

¹Escuela Superior Politécnica del Litoral (ESPOL), ²Arbofino

Photos: Amarú Ramón (AR), Dominic Ziegler (DZ), Javier Chica (JC), Edison García (EG). Produced by Amarú Ramón [ramon@espol.edu.ec], María Belén Garzón [mbgarzonspol.edu.ec@espol.edu.ec], Paolo Piedrahita [ppiedra@espol.edu.ec], Edison García [edison@arbofino.ec].

(M) Male, (F) Female, (E) Eggs, (Juv.) Juvenil. Conservation status: Least concern (LC), Near threatened (NT), Not evaluated (NE), Vulnerable (VU).

Note: all organisms were returned to nature after photos were taken.

© Field Museum (2023) CC BY-NC 4.0. Licensed works are free to use/share/remix with attribution, but commercial use of the original work is not permitted.

[fieldguides.fieldmuseum.org]

[1613] version 1 7/2023



49 *Iguana iguana*
IGUANIDAE: IGUANINAE
LC DZ



50 *Iguana iguana*
IGUANIDAE: IGUANINAE
LC AR



51 *Stenocercus iridescens*
IGUANIDAE: TROPIDURINAE
LC AR



52 *Stenocercus iridescens*
IGUANIDAE: TROPIDURINAE
LC AR



53 *Stenocercus iridescens*
IGUANIDAE: TROPIDURINAE
LC AR



54 *Phyllodactylus reissii*
PHYLLODACTYLIDAE
LC AR



55 *Gonatodes caudiscutatus*
SPHAERODACTYLIDAE
LC AR



56 *Gonatodes caudiscutatus*
SPHAERODACTYLIDAE
LC AR



57 *Gonatodes caudiscutatus* (E)
SPHAERODACTYLIDAE
LC AR



58 *Holcosus septemlineatus*
TEIIDAE
LC AR



59 *Holcosus septemlineatus*
TEIIDAE
LC AR



60 *Holcosus septemlineatus*
TEIIDAE
LC AR



61 *Boa imperator*
BOIDAE
LC DZ



62 *Boa imperator*
BOIDAE
LC DZ



63 *Oxybelis transandinus*
COLUBRIDAE: COLUBRINAE
NE E AR



64 *Oxybelis transandinus*
COLUBRIDAE: COLUBRINAE
NE E AR

Manabí, Ecuador

Amphibians and Reptiles of Recinto Santiago Pichincha

Amarú Ramón Salcedo¹, María Belén Garzón¹, Edison García², Paolo Piedrahita¹

¹Escuela Superior Politécnica del Litoral (ESPOL), ²Arbofino

Photos: Amarú Ramón (AR), Dominic Ziegler (DZ), Javier Chica (JC), Edison García (EG). Produced by Amarú Ramón [ramon@espol.edu.ec], María Belén Garzón [mbgarzonspol.edu.ec@espol.edu.ec], Paolo Piedrahita [ppiedra@espol.edu.ec], Edison García [edison@arbofino.ec].

(M) Male, (F) Female, (E) Eggs, (Juv.) Juvenil. Conservation status: Least concern (LC), Near threatened (NT), Not evaluated (NE), Vulnerable (VU).

Note: all organisms were returned to nature after photos were taken.

© Field Museum (2023) CC BY-NC 4.0. Licensed works are free to use/share/
remix with attribution, but commercial use of the original work is not permitted.

[fieldguides.fieldmuseum.org]

[1613] version 1 7/2023



65 *Coniophanes dromiciformis*
COLUBRIDAE: DIPSADINAE
VU AR



66 *Coniophanes dromiciformis*
COLUBRIDAE: DIPSADINAE
LC AR



67 *Coniophanes dromiciformis*
COLUBRIDAE: DIPSADINAE
LC AR



68 *Leptodeira ornata*
COLUBRIDAE: DIPSADINAE
LC DZ



69 *Sibon nebulatus*
COLUBRIDAE: DIPSADINAE
LC AR



70 *Sibon nebulatus*
COLUBRIDAE: DIPSADINAE
LC AR



71 *Bothrops asper*
VIPERIDAE
LC AR



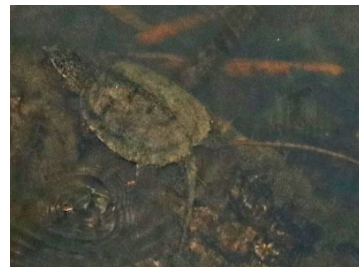
72 *Bothrops asper*
VIPERIDAE
LC AR



73 *Bothrops asper*
VIPERIDAE
LC AR



74 *Chelydra acutirostris*
CHELYDRIDAE
LC AR



75 *Chelydra acutirostris*
CHELYDRIDAE
LC AR



76 *Chelydra acutirostris*
CHELYDRIDAE
LC AR



77 *Chelydra acutirostris*
CHELYDRIDAE
LC DZ

Manabí, Ecuador

Amphibians and Reptiles of Recinto Santiago Pichincha

6

Amarú Ramón Salcedo¹, María Belén Garzón¹, Edison García², Paolo Piedrahita¹

¹Escuela Superior Politécnica del Litoral (ESPOL), ²Arbofino

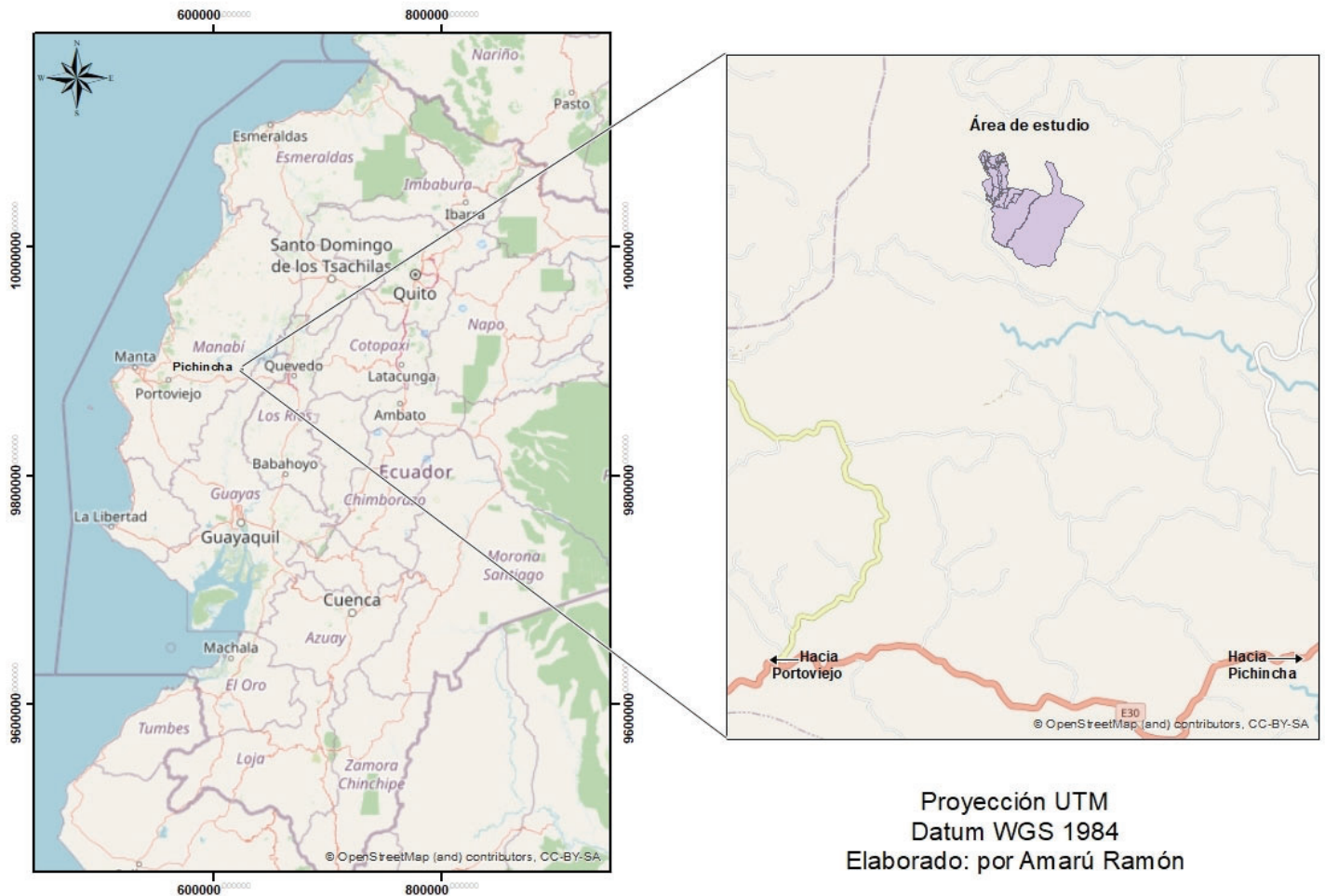
Photos: Amarú Ramón (AR), Dominic Ziegler (DZ), Javier Chica (JC), Edison García (EG). Produced by Amarú Ramón [ramon@espol.edu.ec], María Belén Garzón [mbgarzonspol.edu.ec@espol.edu.ec], Paolo Piedrahita [ppiedra@espol.edu.ec], Edison García [edison@arbofino.ec] Escuela Superior Politécnica del Litoral and Arbofino. (M) Male, (F) Female, (E) Eggs, (Juv.) Juvenil. State of conservation: Least concern (LC), Near threatened (NT), Not evaluated (NE), Vulnerable (VU).

Note: all organisms were returned to nature after photos were taken.

© Field Museum (2023) CC BY-NC 4.0. Licensed works are free to use/share/
remix with attribution, but commercial use of the original work is not permitted.

[fieldguides.fieldmuseum.org]

Study site



Manabí, Ecuador

Amphibians and Reptiles of Recinto Santiago Pichincha

Amarú Ramón Salcedo¹, María Belén Garzón¹, Edison García², Paolo Piedrahita¹
¹Escuela Superior Politécnica del Litoral (ESPOL), ²Arbofino

Photos: Amarú Ramón (AR), Dominic Ziegler (DZ), Javier Chica (JC), Edison García (EG). Produced by Amarú Ramón [ramon@espol.edu.ec], María Belén Garzón [mbgarzonspol.edu.ec@espol.edu.ec], Paolo Piedrahita [ppiedra@espol.edu.ec], Edison García [edison@arbofino.ec] Escuela Superior Politécnica del Litoral and Arbofino. (M) Male, (F) Female, (E) Eggs, (Juv.) Juvenil. State of conservation: Least concern (LC), Near threatened (NT), Not evaluated (NE), Vulnerable (VU).

Note: all organisms were returned to nature after photos were taken.

 © Field Museum (2023) CC BY-NC 4.0. Licensed works are free to use/share/
remix with attribution, but commercial use of the original work is not permitted.

[fieldguides.fieldmuseum.org]



Creek

DZ



Forest

AR



Pond

AR



Waterfall

DZ