



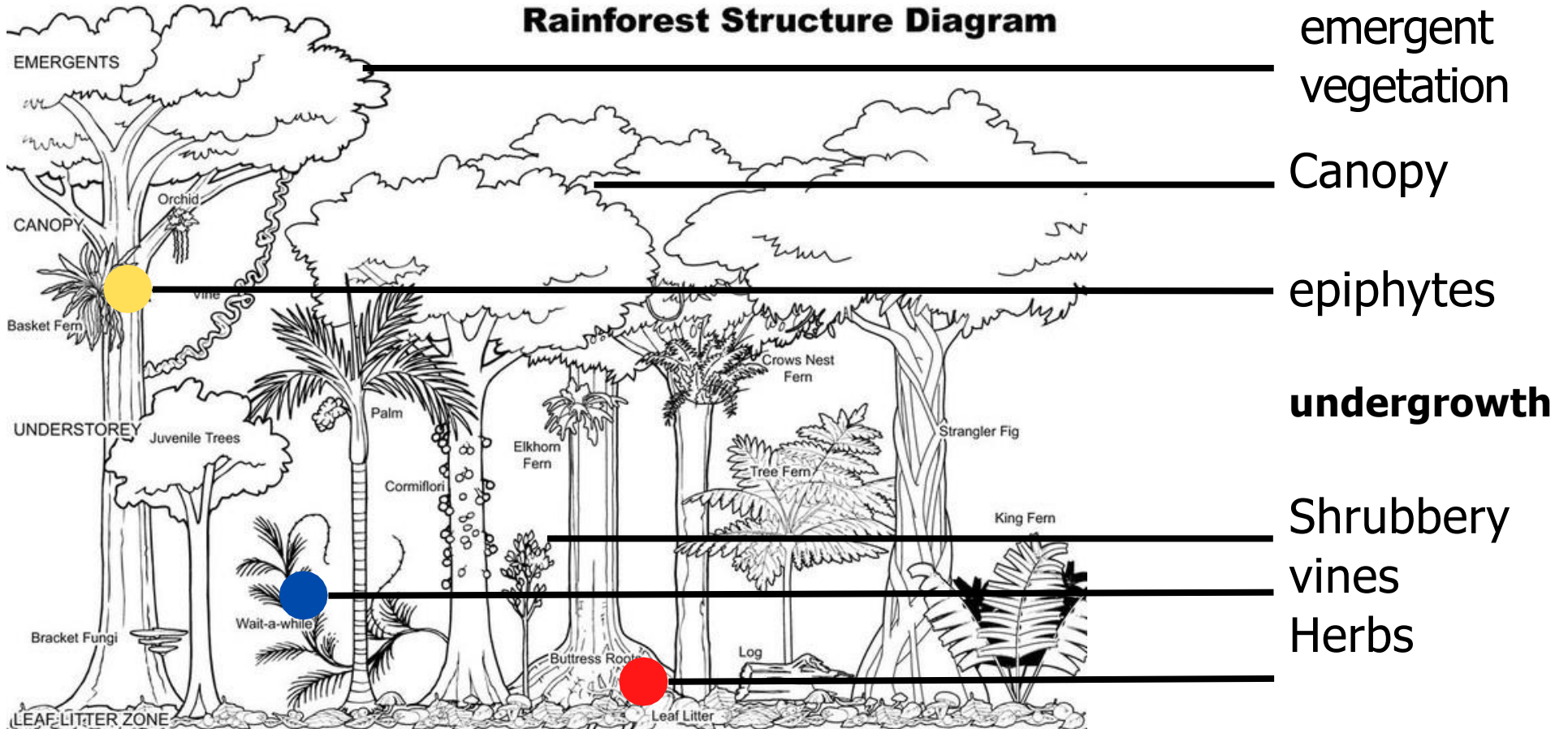
**FLAAR**  
MESOAMÉRICA



# **Herbaceous, vines and epiphytes**

Sergio D'angelo Jerez

## Rainforest Structure Diagram



Background image retrieved from: <https://images.squarespace-cdn.com/content/v1/53109b11e4b05040160f0a8f/1547482143990-LGRVQ4JCBSU7WZJ91LXR/rainforest%2Bdiagram.jpg?format=1000w>

# Stratification of a forest



Photograph by Juan Manuel Velasquez H. (2014) licensed under CC BY 2.0 (<https://creativecommons.org/licenses/by/2.0/>).



Own image.

because of the humidity,  
the heat and the position of Guatemala in America, the plants in Izabal grow below, in the middle and above. In all sides!

This is something that only happens to some places of the world.

We must take care of that wealth.



# Herbaceous (or herbs)

- Do not have woody stems. They
- Are born and flower the same
- year. Are in the first 10cm of the ground.
- Serve as food for many land animals (herbivores). They have
- an important role in the food chain.



- 1 *Dorstenia choconiana*
- 2 *Aphelandra aurantiaca*
- 3 *Clidemia hirta*
- 4 *Begonia* sp.

# **Vines (vines, lianas or climbing plants)**

- Their roots are in the ground, but they grow on top of other
- plants.
- Are not parasites.
- Have climbing parts. They may or
- May not have woody stems. They can be characterized by growing very fast.





*Philodendron radiatum*



*Passiflora choconiana*



*Vanila spp.*



*Combretum cacoucia*



*Aristolochia* sp.



*Calyptrogyne ghiesbreghtiana*

# epiphytes

- Are not parasites.
- Do not grow in the ground. They grow on top of trees.
- Take in nutrients from dust, air, rainwater, and leaf litter.
- Some can absorb water from the air.
- Other animals live in them.

*Werauhia gladioliflora*







*Androlepis skinneri*



*Catasetum* sp.



*Columnea sulfurea*



*Selenicereus testudo*

# Common families

- Orchidaceae
- Bromeliaceae
- Polypodiaceae
- Cactaceae
- Piperaceae
- Araceae

# Orchidaceae

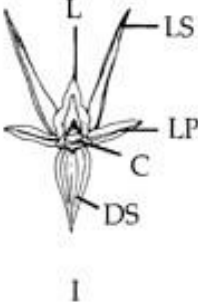
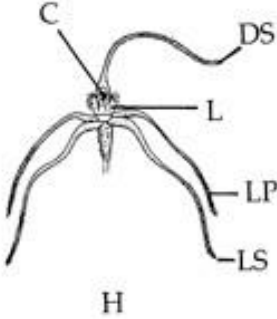
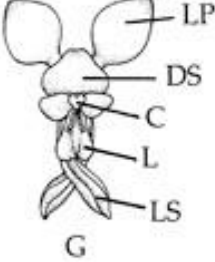
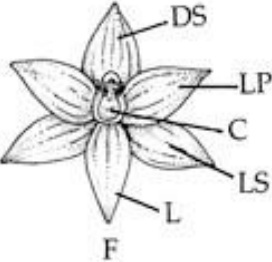
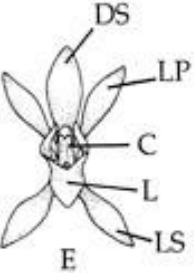
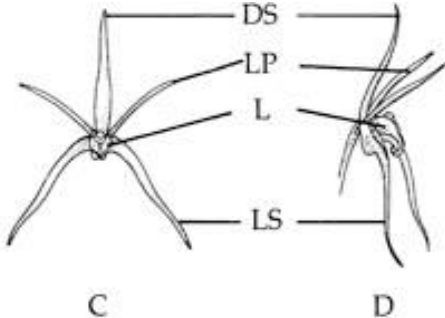
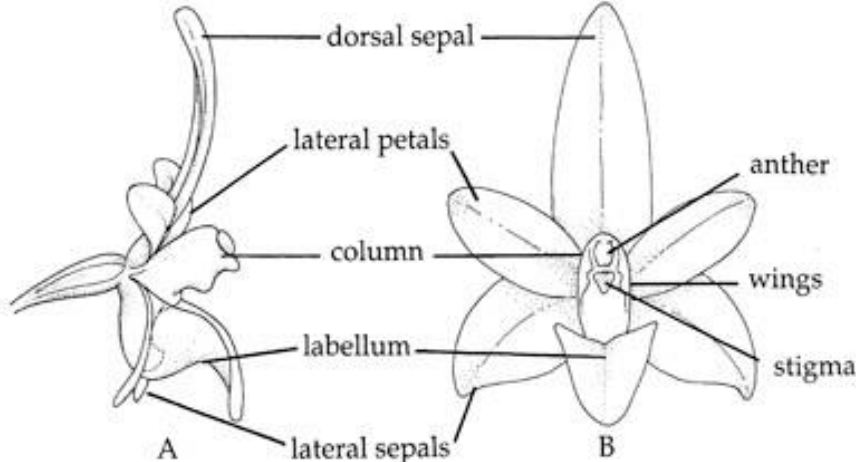


Image retrieved from:  
[https://plantnet.rbgsyd.nsw.gov.au/HerbLink/multimedia/61/022/Orchidaceae\\_2.png](https://plantnet.rbgsyd.nsw.gov.au/HerbLink/multimedia/61/022/Orchidaceae_2.png)

# Bromeliaceae

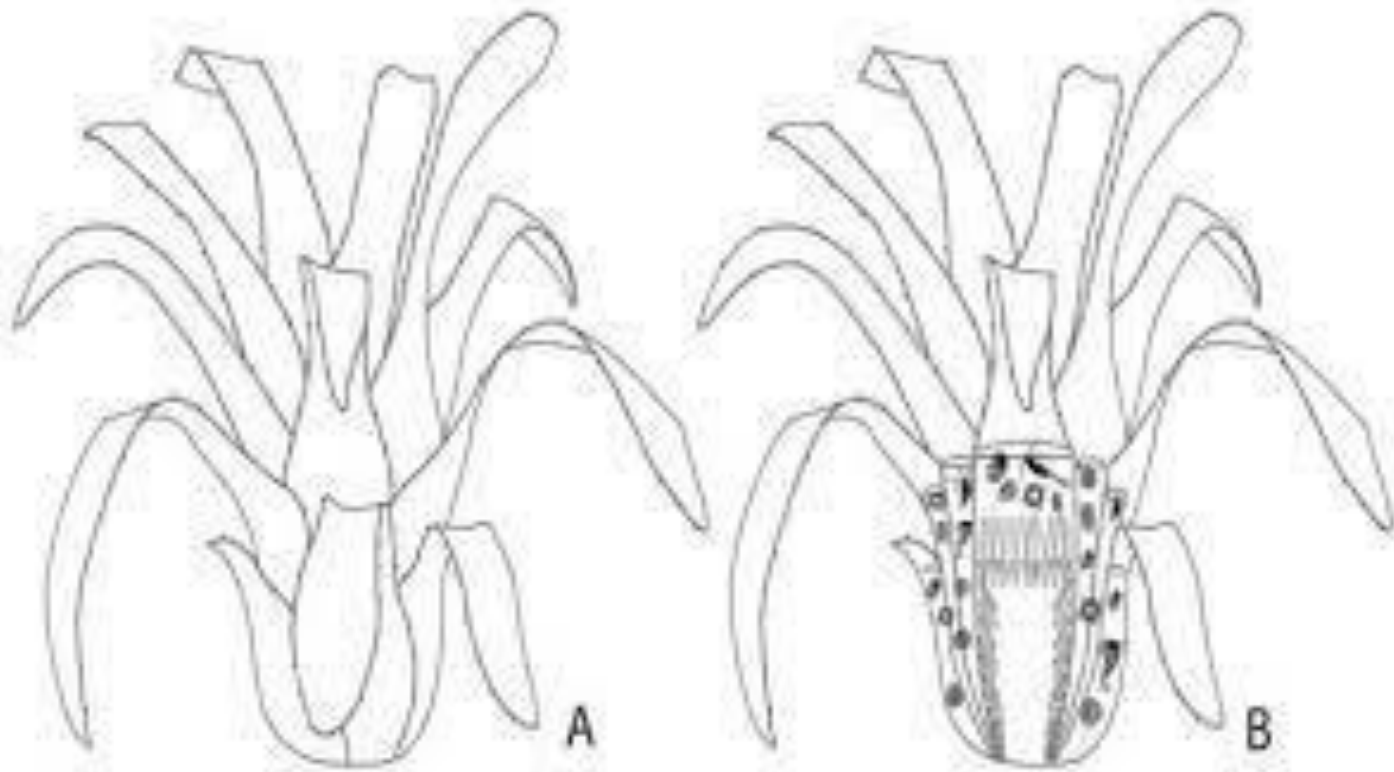


Image retrieved from: <https://encrypted-tbn0.gstatic.com/images?q=tbn:ANd9GcTy2GCVSWRjMheUb6s94hY-cPUQwSqVkwBsBqA&usqp=CAU>

# Araceae

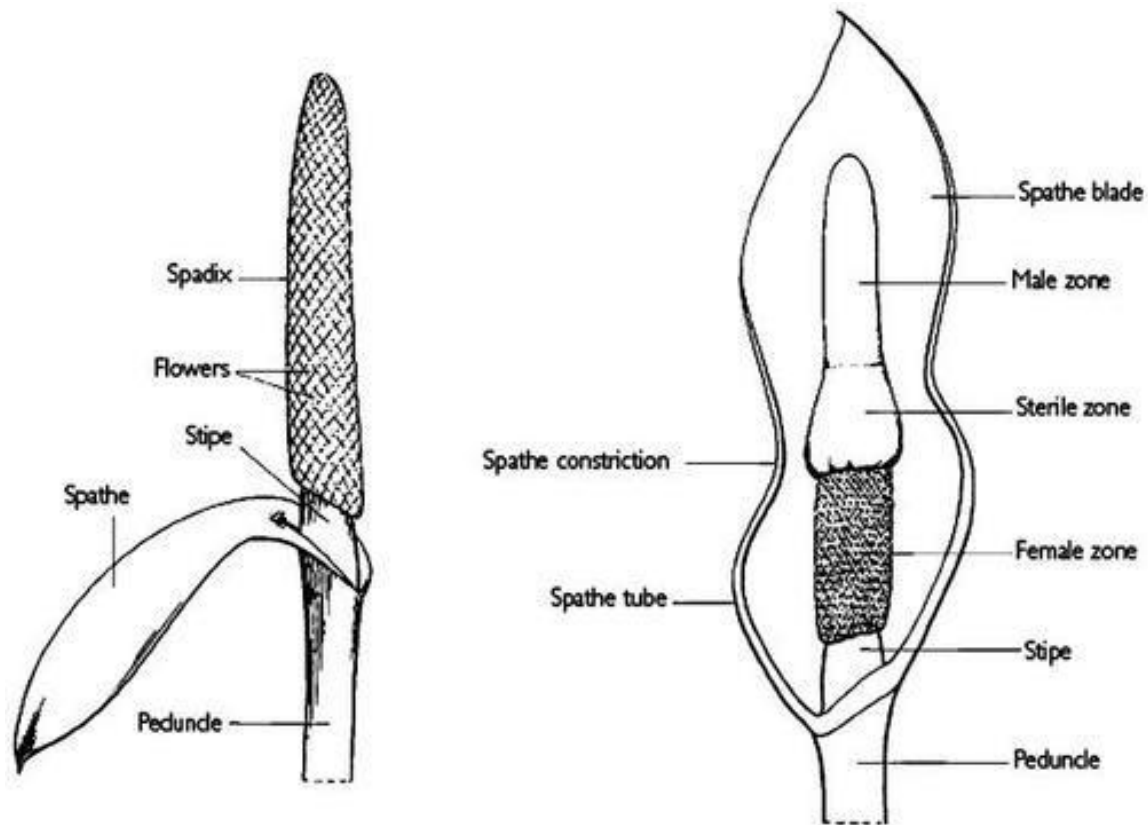


Image retrieved from:

<https://www.journals.uchicago.edu/cms/10.1086/504925/asset/images/medium/fg2.jpeg>





*Aristolochia* spp.