



Marco Island

COLLIER

BROWARD

Ten Thousand Islands

Everglades City

Map 1 - A

Map 1 - B

Map 2 - A

Map 2 - B

MONROE

Map 3 - A

Map 3 - B

Cape Sabel

Map 4 - A

Map 4 - B

Flamingo

Map 5 - A

Map 5 - B










DADE

Homestead

Map 6 - A

Long Key

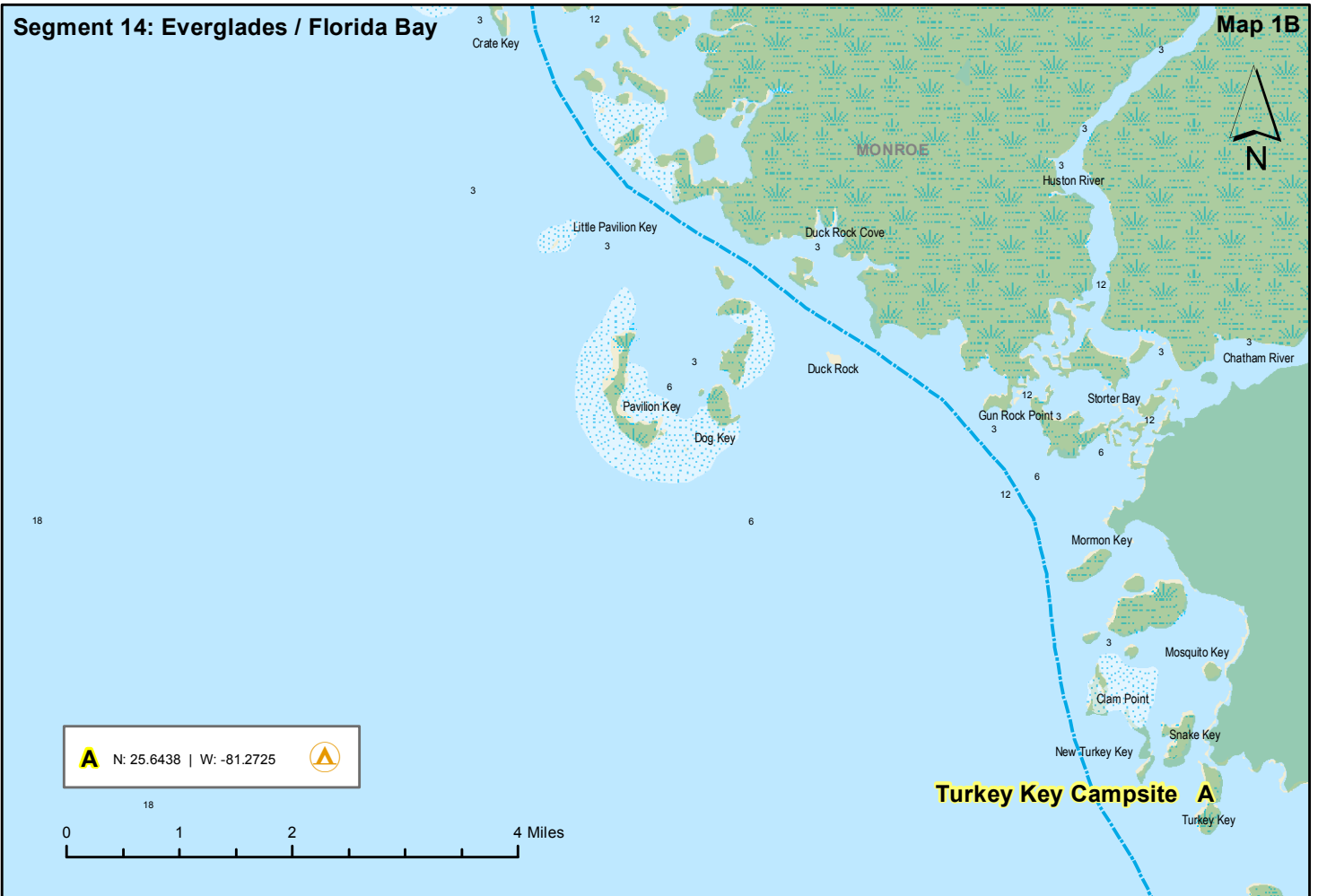
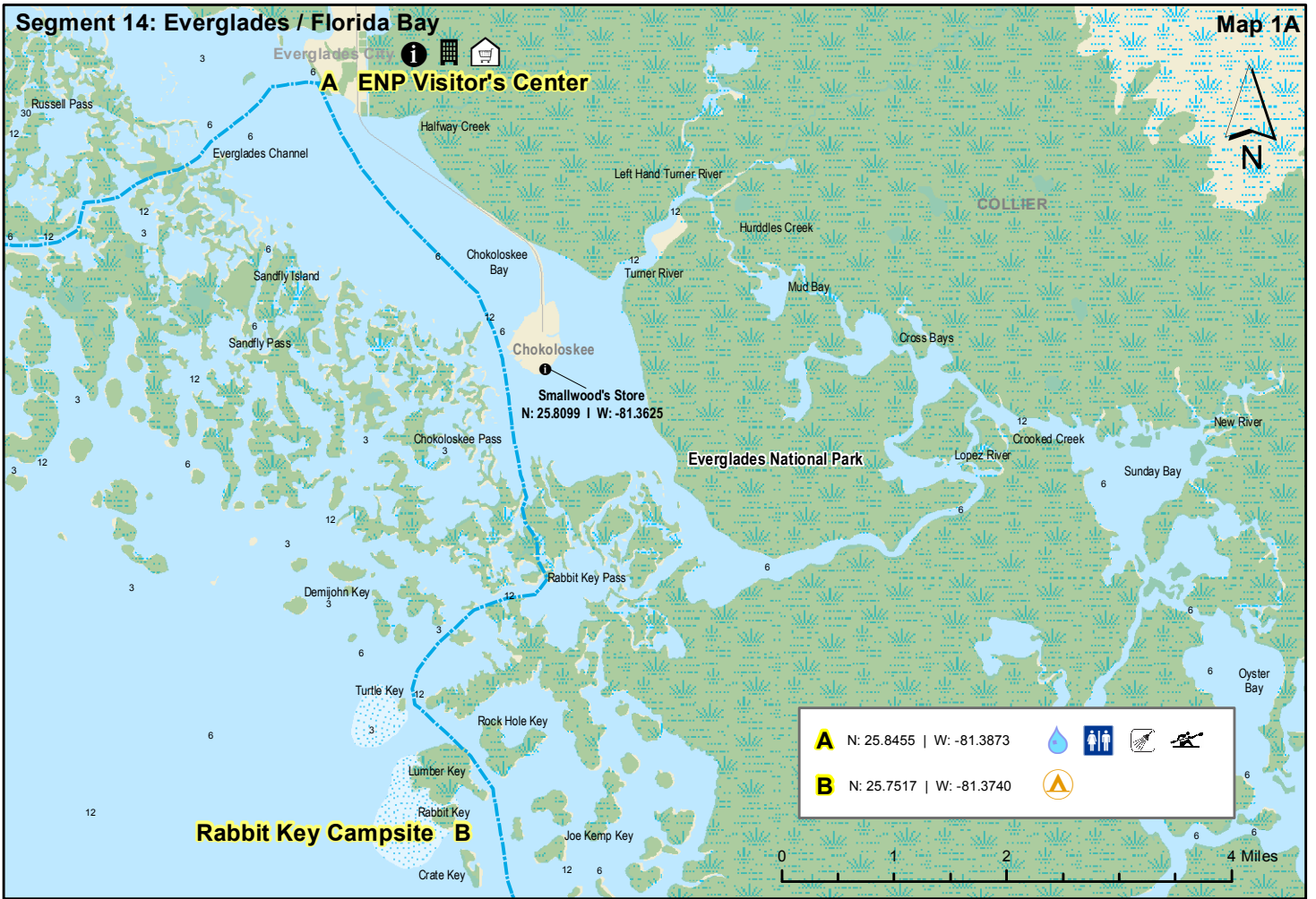
Islamorada

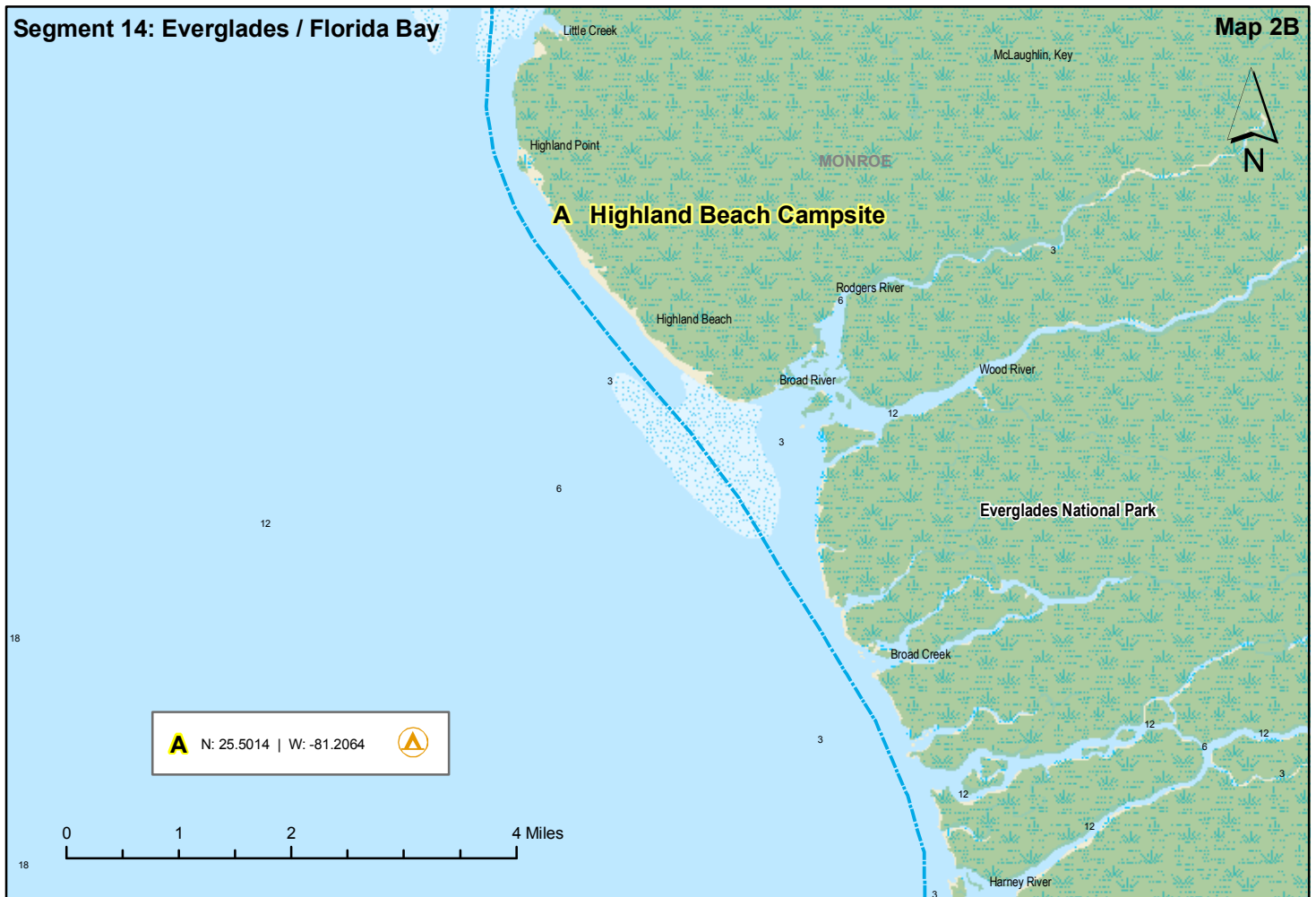
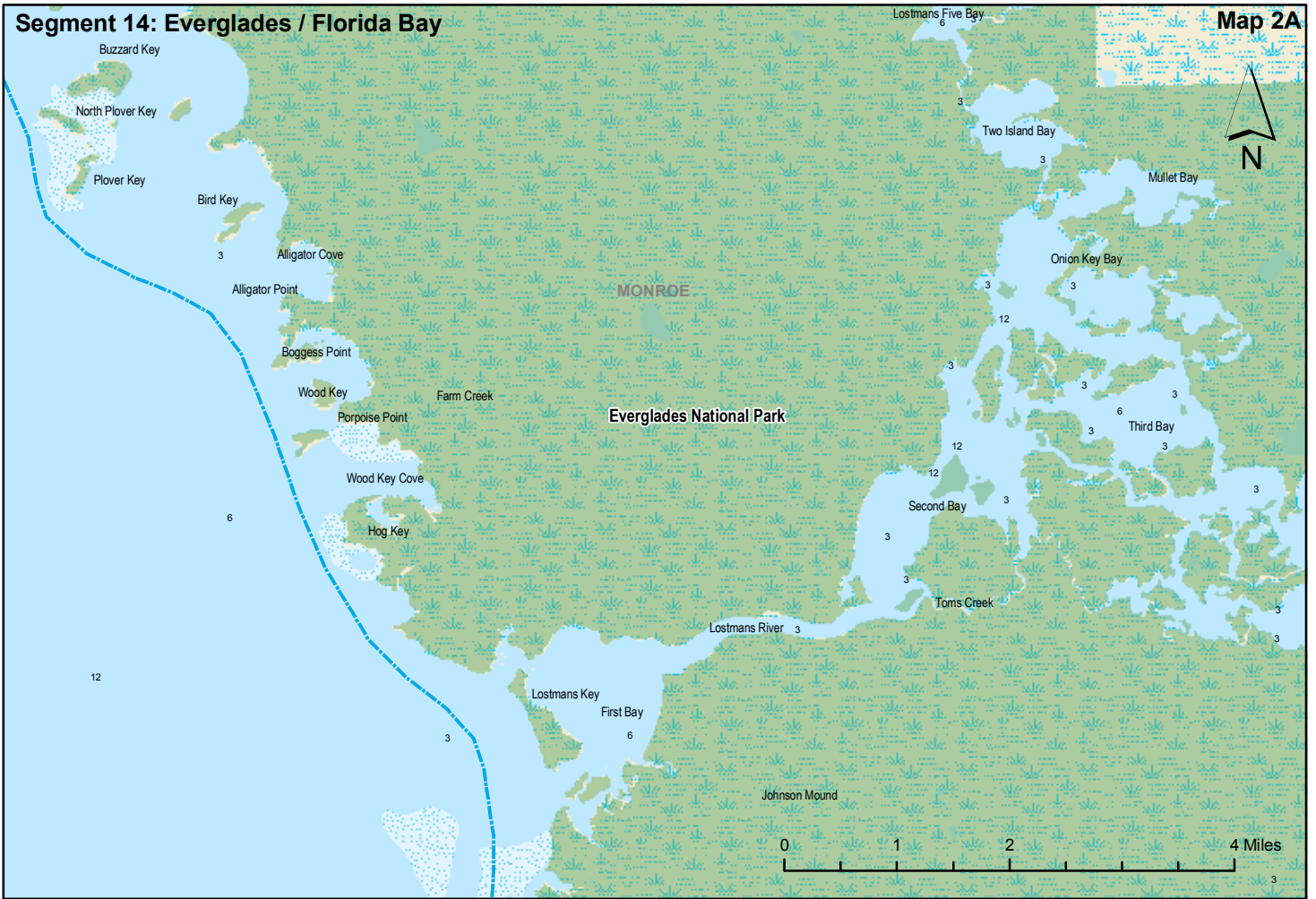
-  Drinking Water
-  Camping
-  Kayak Launch
-  Shower Facility
-  Restroom
-  Restaurant
-  Grocery Store
-  Point of Interest
-  Hotel / Motel

# Florida Circumnavigational Saltwater Paddling Trail Segment 14

## Everglades / Florida Bay

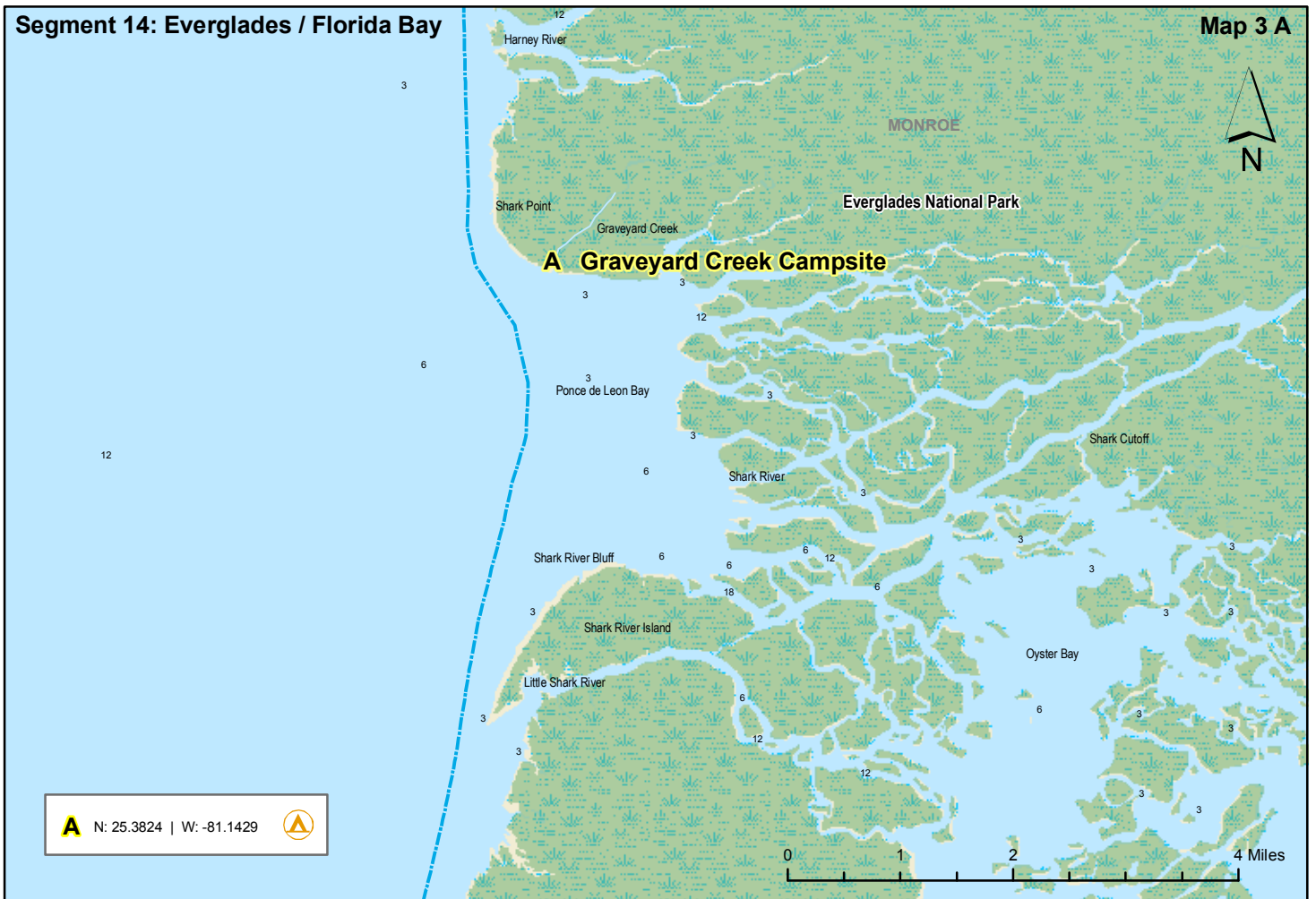
*Disclaimer: This guide is intended as an aid to navigation only. A Global Positioning System (GPS) unit is required, and persons are encouraged to supplement these maps with NOAA charts or other maps.*





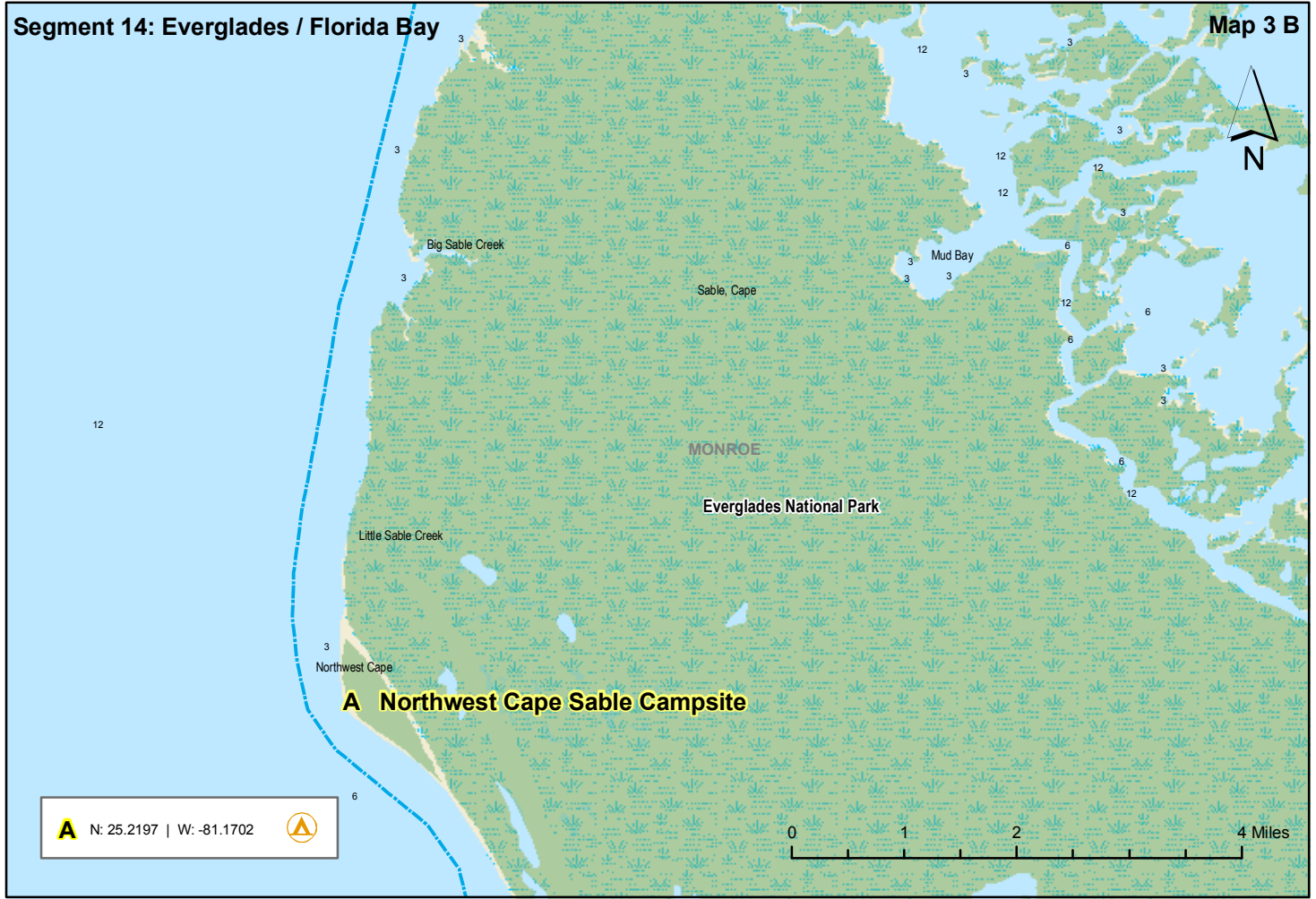
Segment 14: Everglades / Florida Bay

Map 3 A



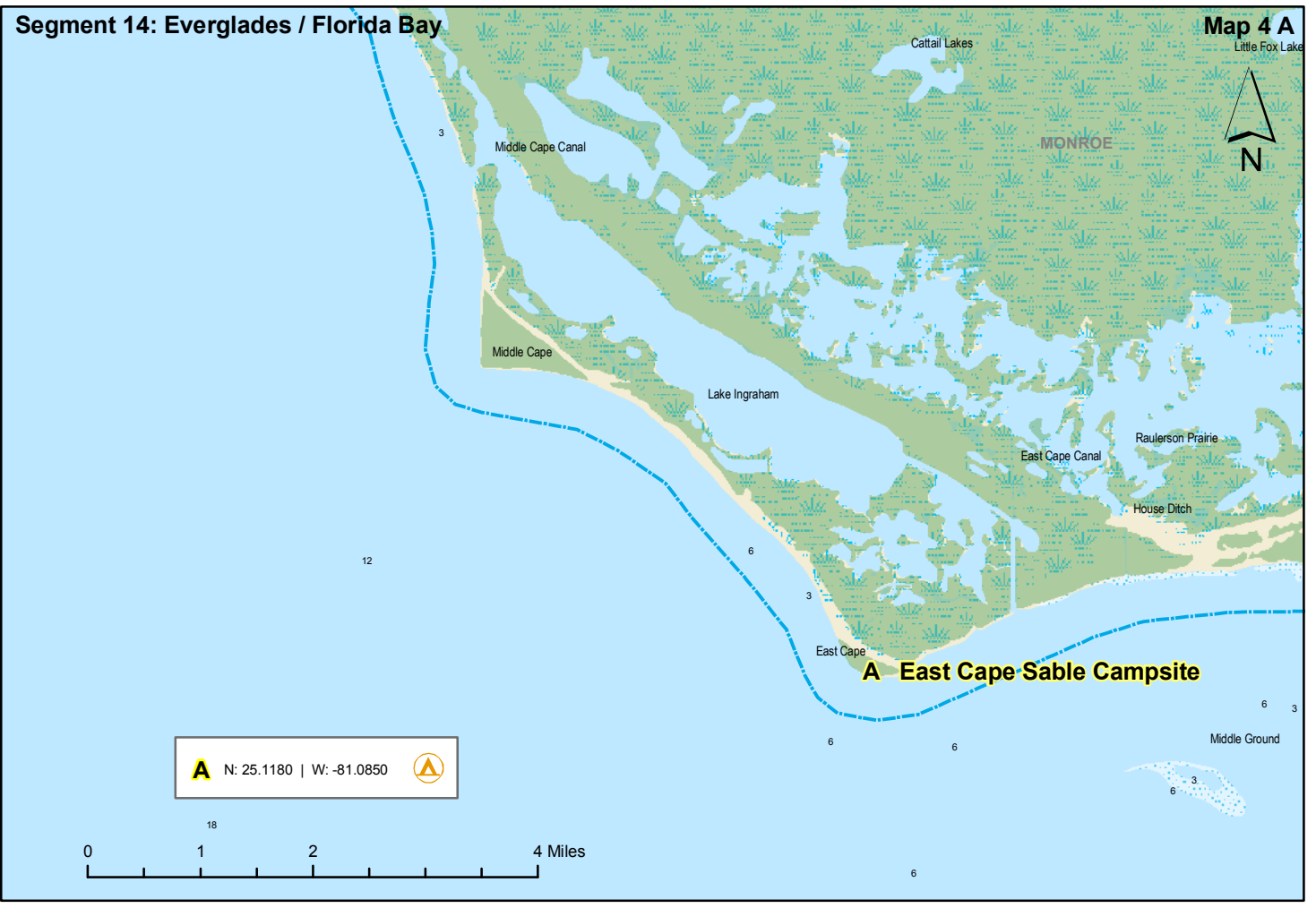
Segment 14: Everglades / Florida Bay

Map 3 B



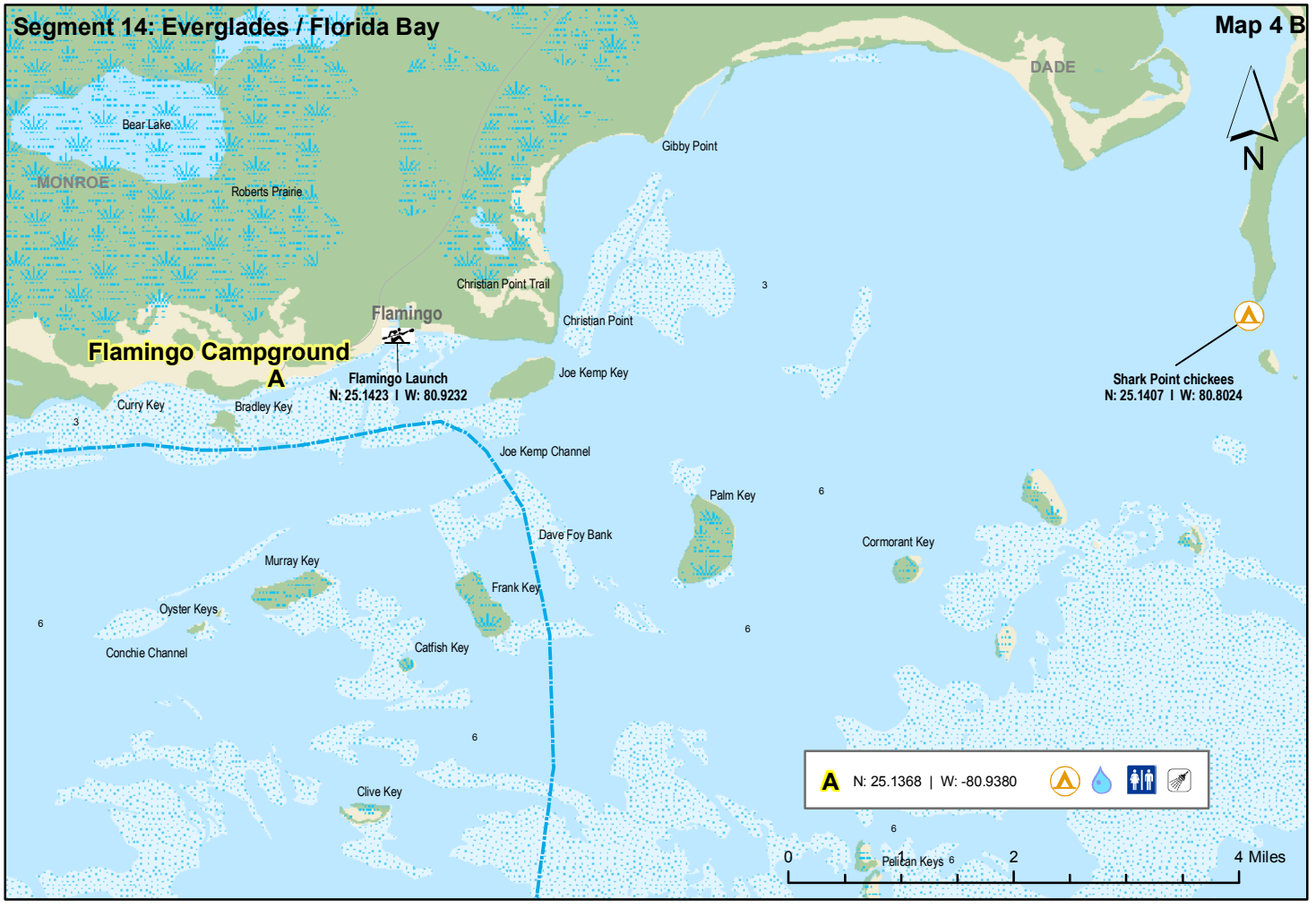
Segment 14: Everglades / Florida Bay

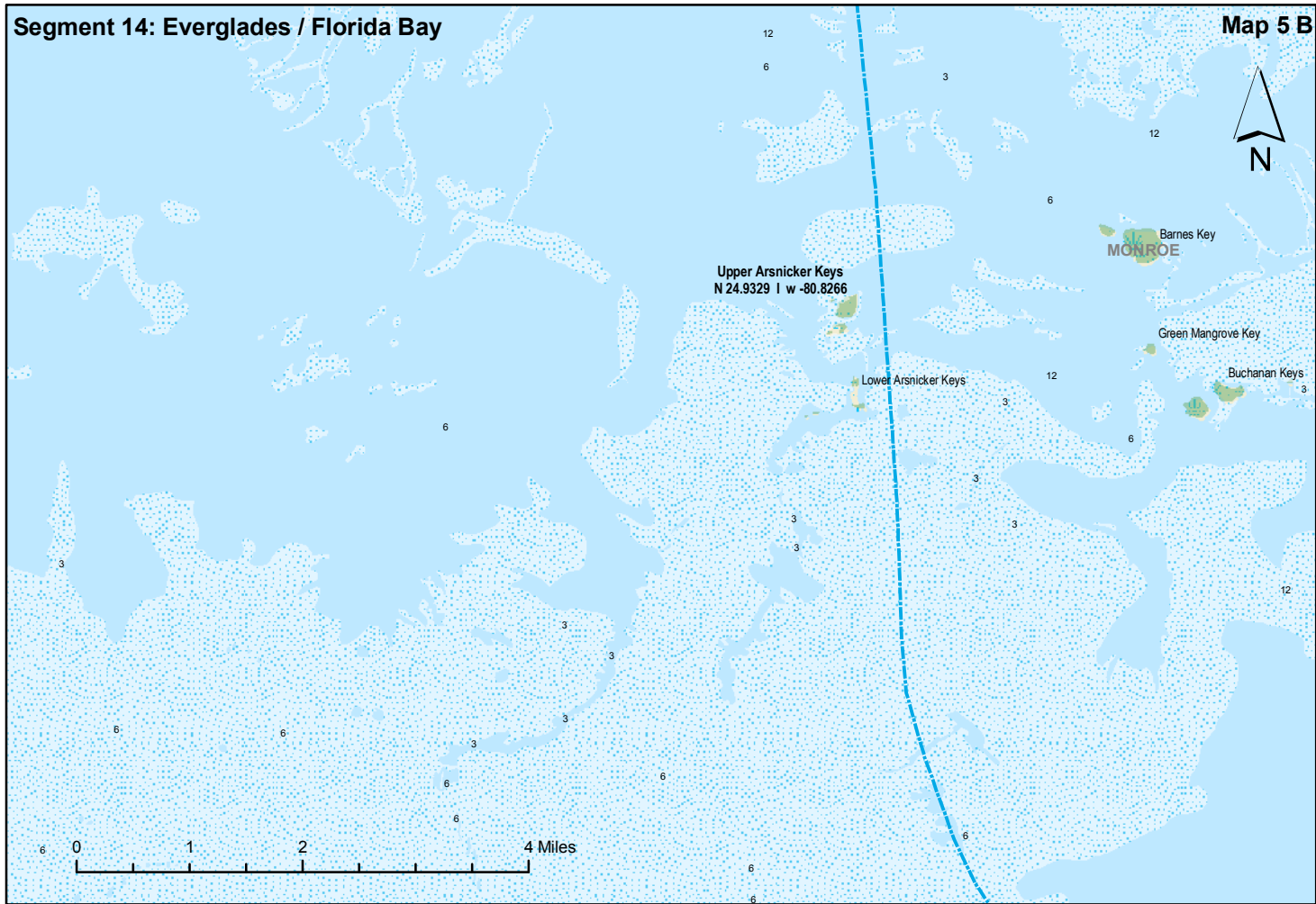
Map 4 A  
Little Fox Lake

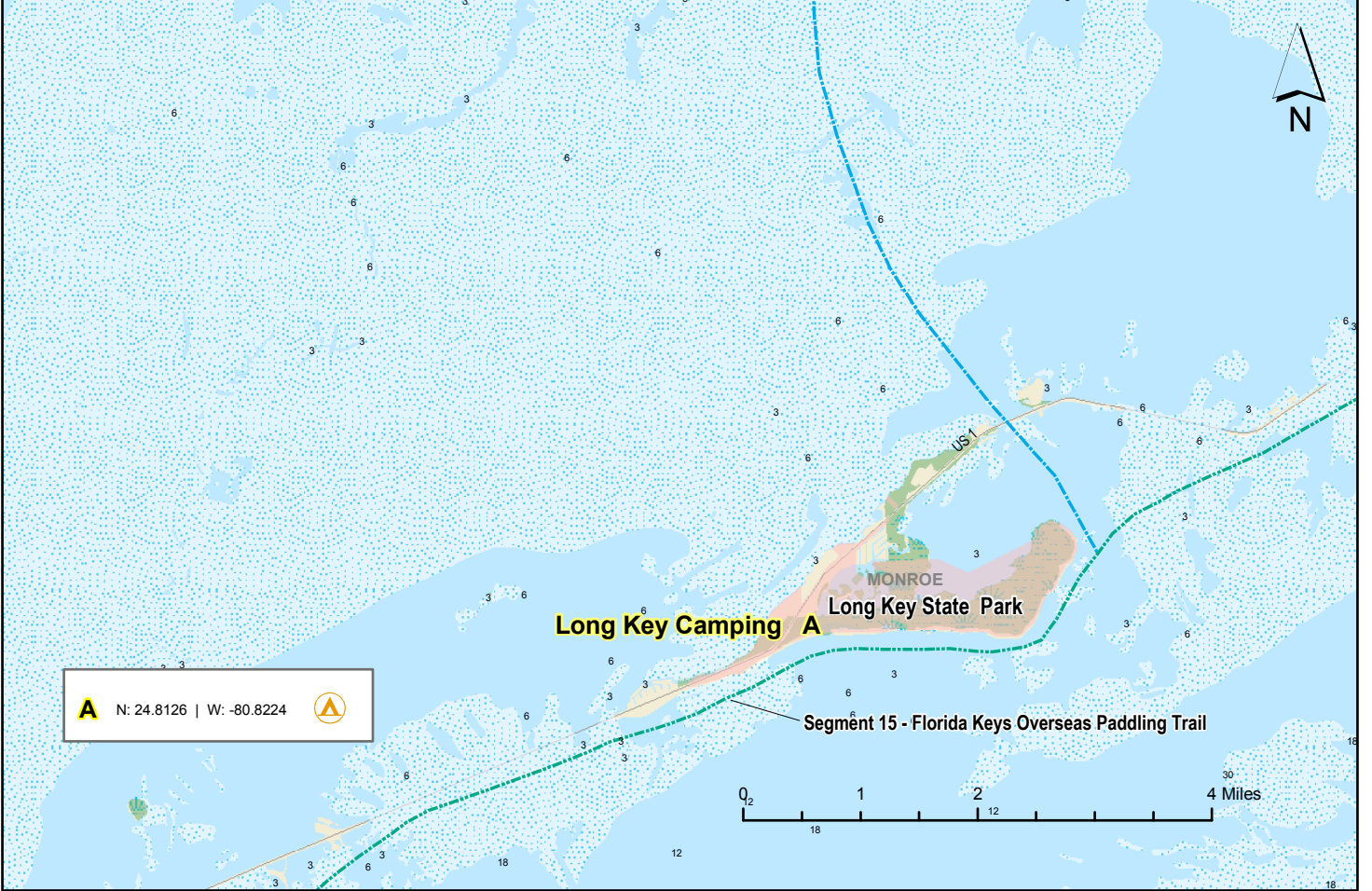


Segment 14: Everglades / Florida Bay

Map 4 B







**A** N: 24.8126 | W: -80.8224 

0 1 2 3 4 Miles  
12 18 30