

# MONTANA IDAHO BATHOLITH ECOREGION

## G1 and G2 Species Habitat Management Guidelines



### INTRODUCTION

The Sustainable Forestry Initiative® (SFI) [2022 Standards](#) include requirements that promote and conserve Forests with Exceptional Conservation Value (FECV), which includes critically imperiled (G1) and imperiled (G2) species. This fact sheet summarizes the analysis of FECV habitat within this ecoregion and provides habitat management recommendations that would benefit species potentially found here.

### HABITAT TYPES

- Mixed Conifer Forest
- Riparian/Streams/Pools
- Special sites (Alpine, Bare Rock/Talus, Shrubland)

### MIXED CONIFER FOREST MANAGEMENT

- Protect known locations
- Retain legacy trees, stumps, and logs
- Retain large diameter trees with cavities or broken tops
- Leave skips and gaps with dense shrub component
- Retain large slash into piles

### RIPARIAN/STREAMS/POOLS MANAGEMENT

- Protect known locations
- Maintain well vegetated riparian buffers
- Plant a diversity of both hardwood and conifer trees
- Retain large diameter trees near streams and rivers and pools
- Buffer wetlands, springs, pools, and headwater areas

### SPECIAL SITES MANAGEMENT

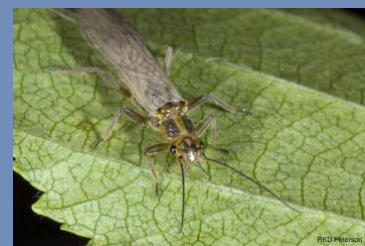
- Protect known locations,
- Provide floral resources such as Asters, Chrysothamnus, and Cirsium
- Provide buffers



**Suckley Cuckoo Bumble Bee**



**Sapphire Rockcress**



**Lolo Sailfly**

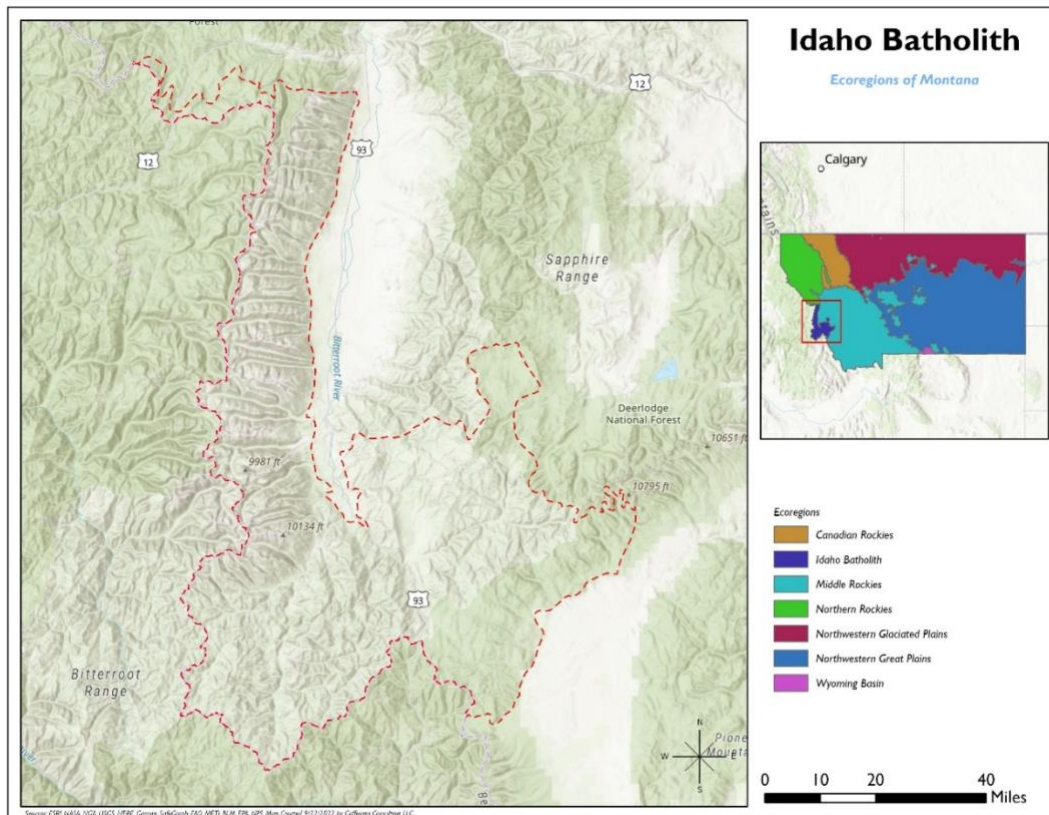
*All management recommendations assume that operators and land managers are following all applicable BMPs, laws, and regulations.*

# MONTANA IDAHO BATHOLITH ECOREGION

## G1 and G2 Species Habitat Management Guidelines

SCIENTIFIC NAME	COMMON NAME	HABITAT	STATUS
<i>Physaria humilis</i>	Bitterroot Bladderpod	Alpine	G2
<i>Nodobryoria subdivergens</i>	<a href="#">Alpine Foxtail Lichen</a>	Alpine	G2G3
<i>Synthyris canbyi</i>	<a href="#">Mission Mountain kittentails</a>	Bare Rock/Talus	G2G3
<i>Boechera fecunda</i>	<a href="#">Sapphire Rockcress</a>	Mixed Conifer Forest	G2
<i>Micranthes tempestiva</i>	<a href="#">Storm Saxifrage</a>	Pools	G2G3
<i>Soliperla salish</i>	<a href="#">Clearwater Roachfly</a>	Riparian/Streams	G2
<i>Sweltsa durfeeii</i>	<a href="#">Lolo Sailfly</a>	Riparian/Streams	G2
<i>Bombus suckleyi</i>	<a href="#">Suckley Cuckoo Bumble Bee</a>	Shrubland	G2G3

\*Species links provided when available



All management recommendations assume that operators and land managers are following all applicable BMPs, laws, and regulations.