

# GENERATION MINING



**CORPORATE PRESENTATION**  
NOVEMBER, 2018

This presentation (in this projected form and as verbally presented) (Presentation) is provided on the basis that neither Generation Mining Limited (Gen Mining), nor its officers, shareholders, related bodies corporate, partners, affiliates, employees, representatives and advisors make any representation or warranty (express or implied) as to the origin, validity, accuracy, reliability, relevance, currency or completeness of the material contained in the Presentation and no responsibility is taken for any errors or omissions. Nothing contained in the Presentation is, or may be relied upon as, a promise, representation or warranty, whether as to the past or the future.

Gen Mining excludes all warranties (including implied warranties) and all liability that can be excluded by law for any loss, claim, damage, cost or expense of any nature (including that arising from negligence) arising out of the Presentation (or any accompanying or other information) whatsoever, nor by reason of any reliance upon it. Gen Mining accepts no responsibility to update any person regarding any inaccuracy, omission or change in information in this Presentation or any other information made available to a person or any obligation to furnish the person with any further information.

The Presentation contains "forward-looking statements". Where the Presentation expresses or implies an expectation or belief as to future events or results, such expectation or belief is expressed in good faith and is believed to have a reasonable basis. However, forward-looking statements are subject to risks, uncertainties and other factors, which could cause actual results to differ materially from future results expressed, projected or implied by such forward looking statements. Such risks include, but are not limited to, price volatility, currency fluctuations, increased production costs and variances in ore grade, recovery rates or other matters from those assumed in mining plans, as well as political and operational risks and governmental regulation and judicial outcomes. Gen Mining does not undertake any obligation to release publicly any revisions to any "forward-looking statement" to reflect events or circumstances after the date of the Presentation, or to reflect the occurrence of unanticipated events, except as may be required under applicable securities laws. Statements relating to reserve and resource estimates are expressions of judgment, based on knowledge and experience and may require revision based on actual production experience.

Such estimates are necessarily imprecise and depend to some extent on statistical inferences and other assumptions, such as metal prices, cut-off grades and operating costs, which may prove to be inaccurate. Information provided relating to projected costs, capital expenditure, production profiles and timelines are expressions of judgment only and no assurances can be given that actual costs, production profiles or timelines will not differ materially from the estimates contained in this Presentation.

All persons should seek appropriate professional advice in reviewing or considering the Presentation and all other information with respect to Gen Mining and evaluating the business, financial performance and operations of Gen Mining. Neither the provision of the Presentation nor any information contained in the Presentation or subsequently communicated to any person in connection with the Presentation is, or should be taken as, constituting the giving of investment or financial product advice to any person in respect of dealing in Gen Mining securities, and no such information should be taken to constitute a recommendation or statement of opinion that is intended to influence a person in making a decision to deal in Gen Mining securities.

This Presentation does not purport to contain all of the information that may be required to evaluate all of the factors that would be relevant in determining whether to deal in Gen Mining securities, including but not limited to any person's objectives, financial situation or needs. Each person must not rely on the information provided but should make, and will be taken to have made, its own investigation, assessment and analysis of the information in this Presentation and other matters that may be relevant to it in considering whether to deal in Gen Mining securities. Gen Mining owns the copyright in this Presentation.

# QUALITY PROJECTS, SAFE JURISDICTIONS

GENERATIONMINING



## JAMIE LEVY **President, CEO & Director**

25 years in financing and management of Canadian mining companies. Was CEO of Pine Point Mining which was acquired by Osisko Metals. Formerly Vice President of Pinetree Capital.

## HALINA MCGREGOR **Chief Financial Officer**

Chartered Accountant with extensive experience, including former Chief Financial Officer of Sherritt International, Goldcorp Inc. and Pine Point Mining.

## ROD THOMAS, P.Geo. **VP - Exploration & Director**

Exploration Geologist with 40 years experience in Canada and abroad. Former Exploration Manager BHP Minerals Eastern Canada and General Manager of VM Canada. President of PDAC 2014-2016.

## PATRICIA MANNARD **Vice-President, Finance**

Managed administrative and financial aspects of exploration companies for 30 years, including Pine Point Mining from 1993-2018.

## CONSULTANTS

## DENISE LOCKETT **Community Relations Manager**

More than 30 years experience in government and community relations for mining companies in the Northwest Territories including Ekati and several other high profile projects.

## JIM VICE **Concentrate Marketing**

Chemical Engineer, spent 36 years at Teck-Cominco, most recently Director of Concentrate Marketing for Teck, responsible for worldwide sales and purchasing of zinc and lead concentrates.

## KERRY KNOLL **Chairman**

Co-founded several successful mining companies over 35 years including Wheaton River, Thompson Creek and Glencairn Gold. Former editor of The Northern Miner Magazine.

## BRIAN JENNINGS, CPA, CA, BSC **Director**

Chartered Accountant and geologist with 30 years of experience working as a senior financial executive and corporate restructuring professional for both public and private companies in a wide range of industries.

## STEPHEN REFORD **Director**

Geophysicist and professional engineer for 35 years, President of Paterson, Grant & Watson Limited, an international geophysical consulting company.

## KEVIN STEVENS **Consultant**

Geophysicist for 35 years, former Principal Geophysicist Falconbridge Ltd. (12 years), discovered seven deposits including Nickel Rim South for which he was co-recipient of PDAC Prospector of the Year.

# DAVIDSON MOLYBDENUM DEPOSIT

GENERATIONMINING



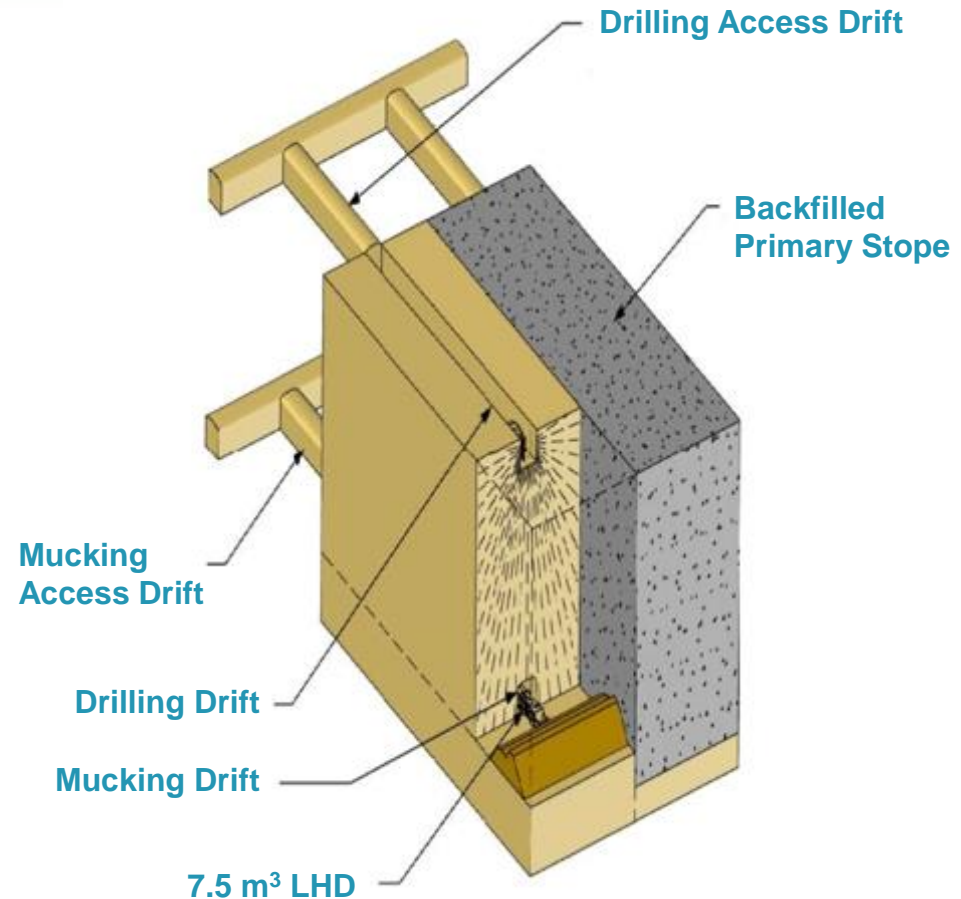
*Davidson Molybdenum Deposit in British Columbia, located within Hudson Mountain at the edge of Smithers, B.C.*

- Discovered in 1944, major programs by Amax began in 1957
- To date, 74,000 metres of surface and underground drilling
- A further 2,600 metres of underground excavations
- This work would cost \$75 million today and take several years
- Most of the drill core is intact and catalogued
- Generation Mining has option to earn 100% interest

# DAVIDSON

## HIGH GRADING OPPORTUNITY

- M+I resource **90 million tonnes** grading 0.171% Mo, 0.034% WO<sub>3</sub>
- **340 million lbs contained Mo**
- 2008 Hatch FS recommended **blast-hole shrinkage mining**
- Each stope >1 million tonnes
- Generation Mining looking at **high grade optimization**
- Scoping study would focus on half of the resource, examining **2,000-5,000 tpd mine**
- **20-50-year mine life**, would only need 1-2 stopes per year



*Blast Hole Shrinkage Mining Method  
from Hatch 2008 Feasibility Study*

# ALBERTA ZINC

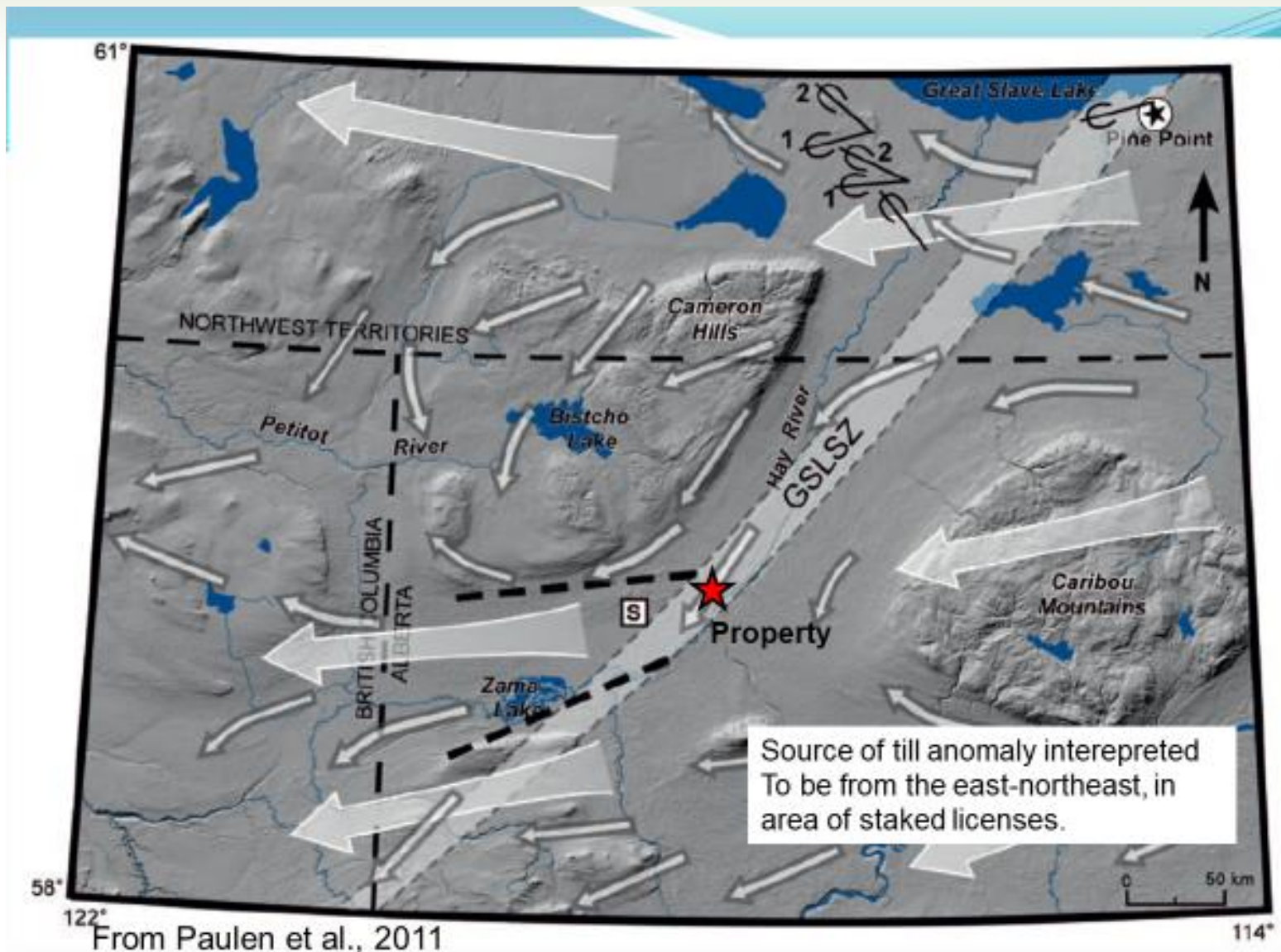
## MASSIVE TILL ANOMALY

- 65,000 hectare property in Alberta staked along Mackenzie Highway
- Great infrastructure: paved highway, rail, power, Town of High Level (80 km)
- Property located over likely source of 4,000 sq km zinc anomaly
- Located on the prolific Great Slave Shear Zone
- Source of anomaly thought to be a large SEDEX deposit
- Only 20-40 metres depth
- Chevron oil well intersected 10 metres grading 3.7% zinc at 1200 metre depth
- Then drill to bedrock – shallow holes



*Sphalerite (zinc) grains from till heavy mineral concentrates collect down-ice from Alberta Zinc Project*

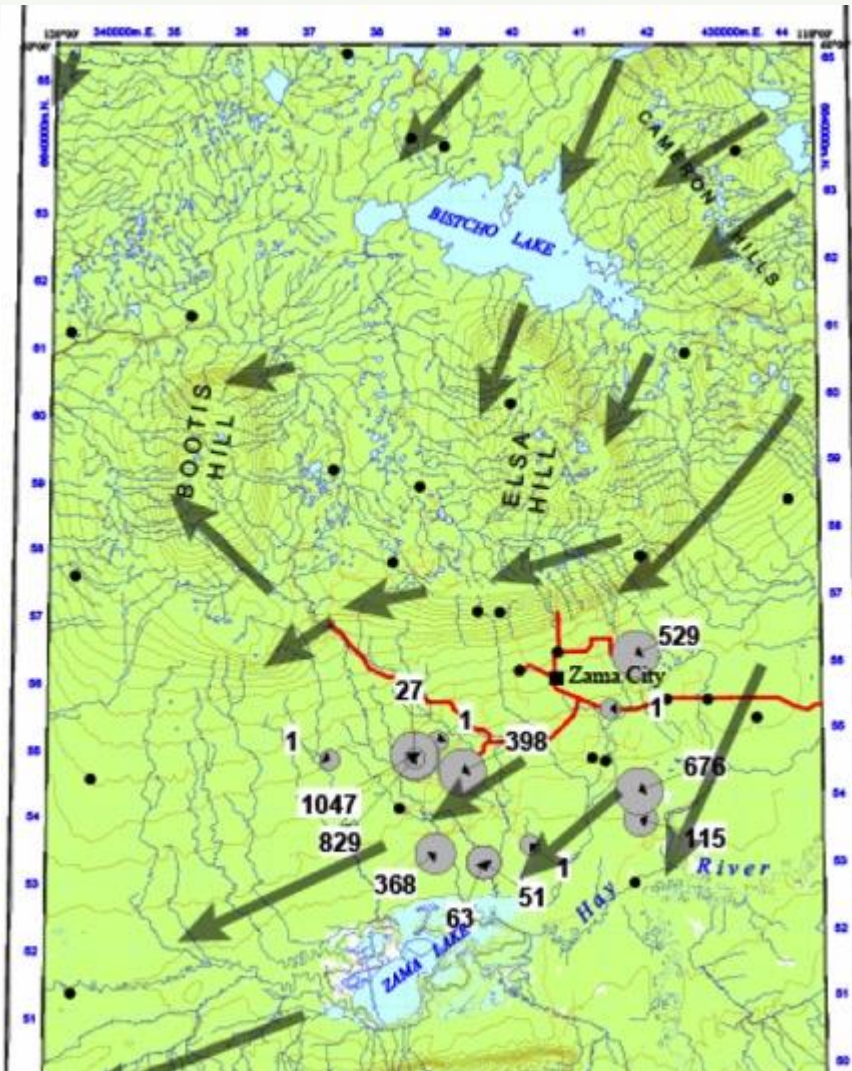
# GREAT SLAVE LAKE SHEAR ZONE



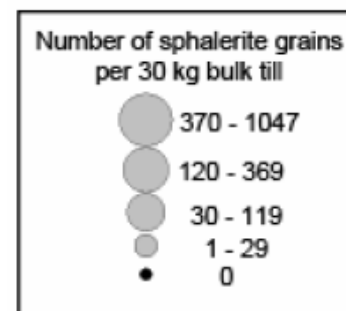


# ICE DIRECTION WELL DOCUMENTED

GENERATIONMINING



- Sphalerite mineral train discovered by GSC-AGS while searching for kimberlite indicators
- Map shows grain count per 30 kg of till
- Alberta Zinc property is about 20 km east of the map)
- Target most likely “up-ice” from train

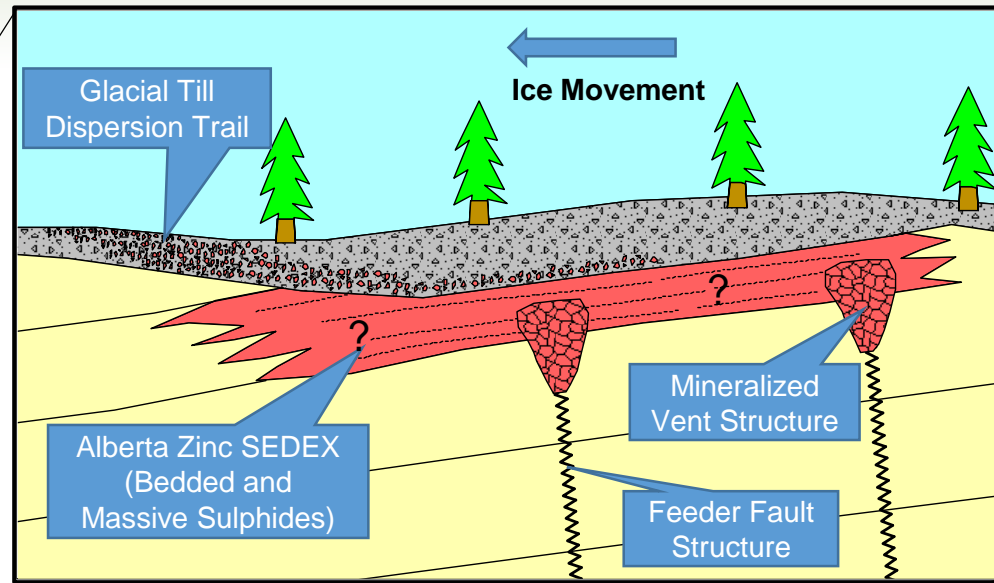


Ice-flow direction

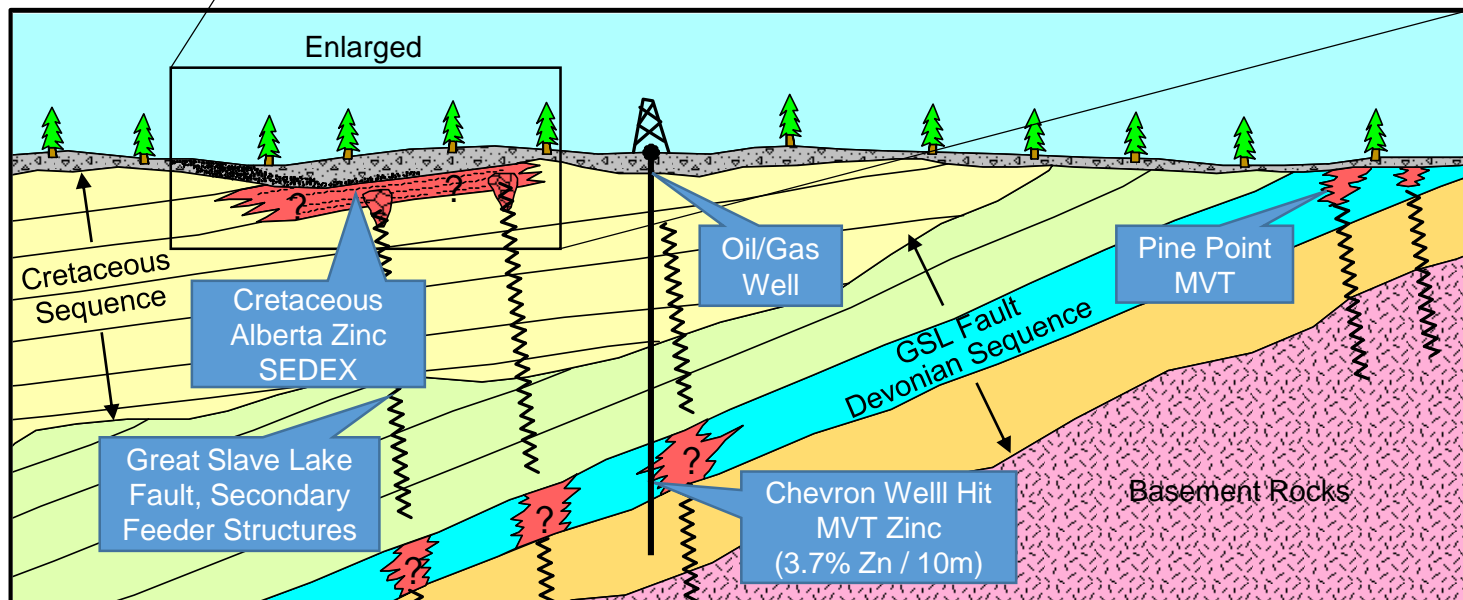
# ALBERTA ZINC

## CONCEPTUAL SEDEX MODEL

GENERATIONMINING

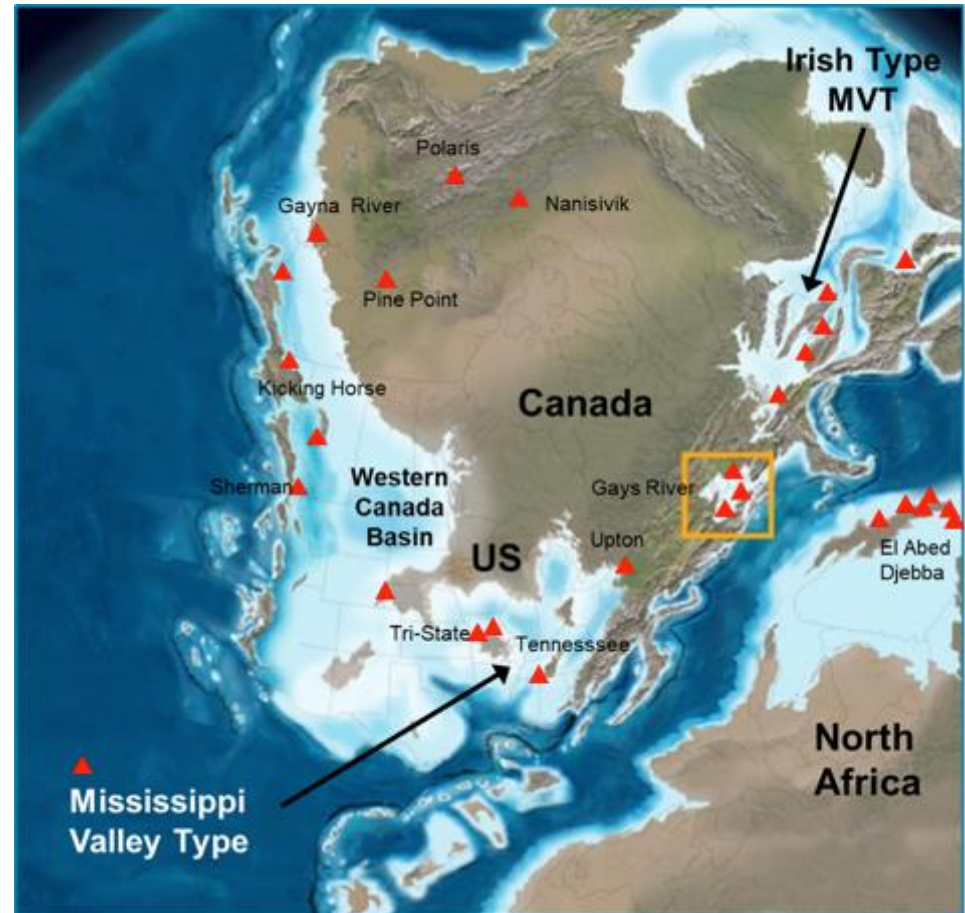


Not to Scale



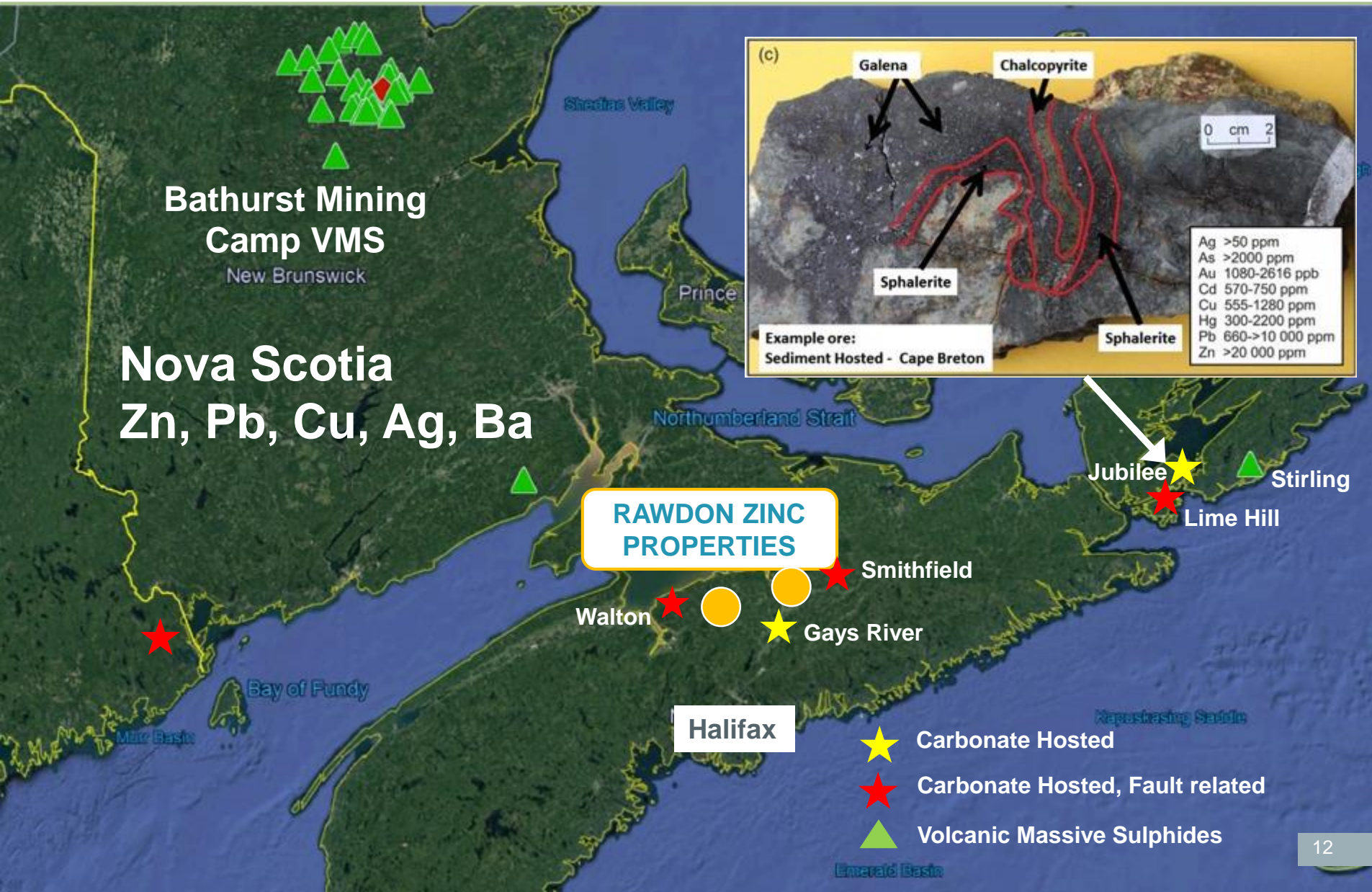
# RAWDON ZINC TARGET

- Area was connected with Ireland 340 Ma
- Once ancient shallow seas which were host to both Sedex and MVT zinc deposits
- Consists of 17 exploration licenses for ~ 200 square kms.
- Seismic work on Rawdon fault indicates favourable **host formation** for both Sedex and MVT deposits
- 1250 line km VTEM Survey completed in September 2018.

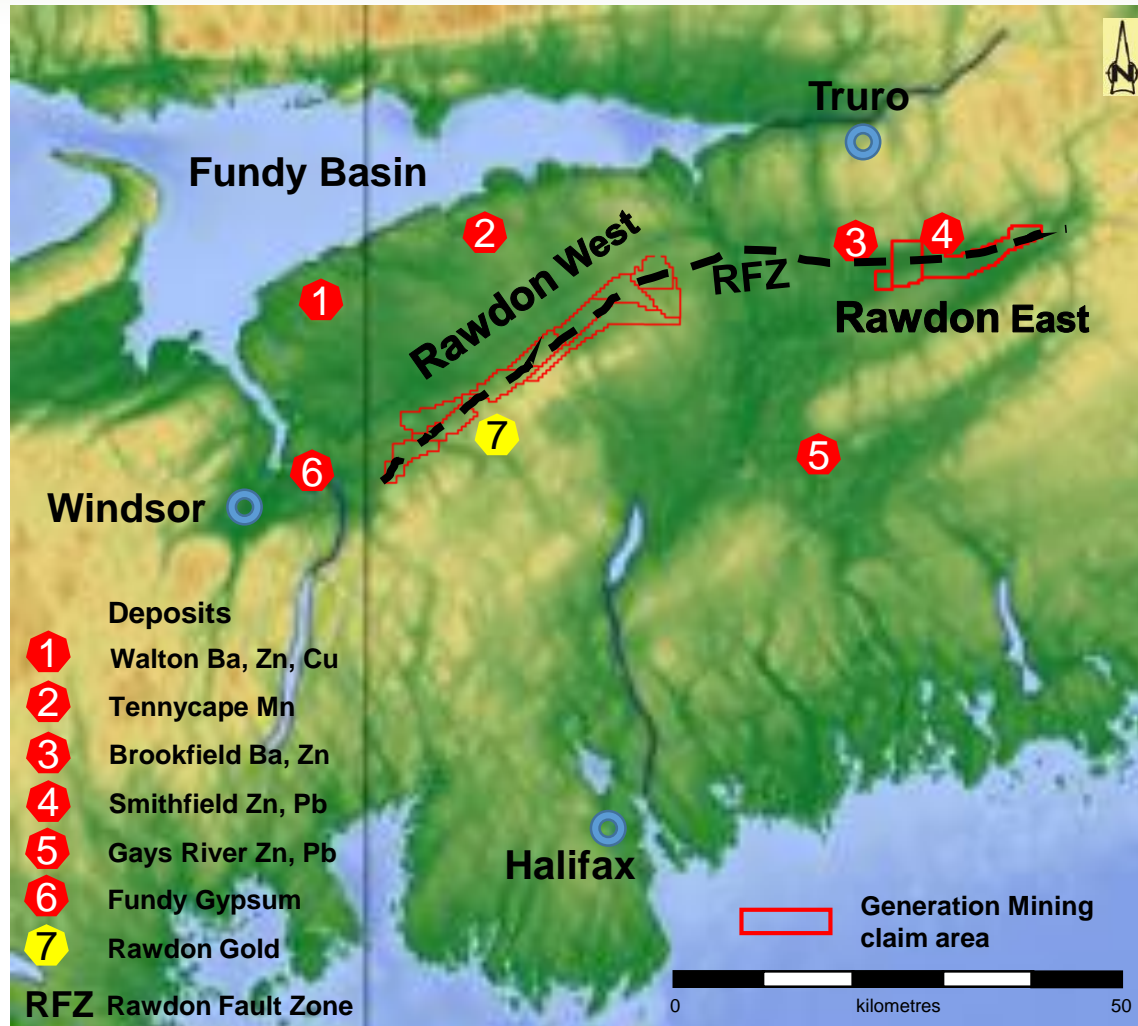


*Pangea-Laurentia. 340 Ma*

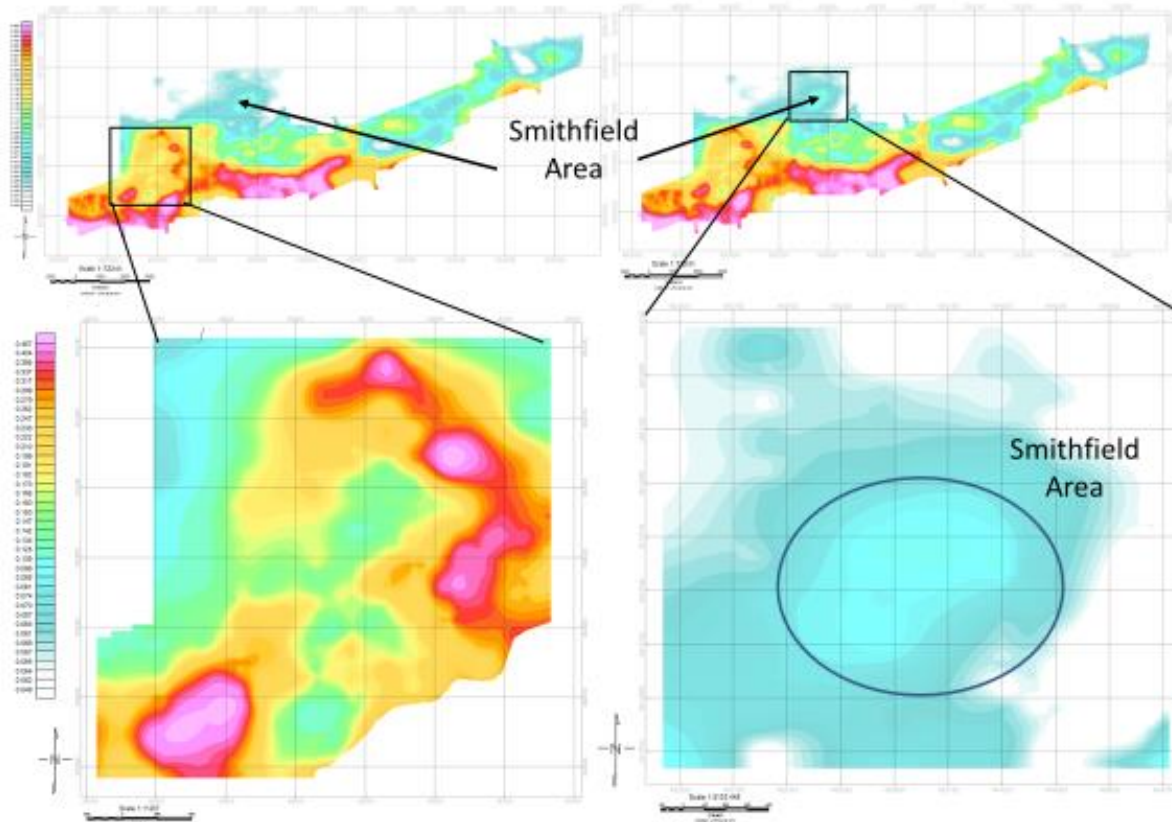
# RAWDON LOCATION



# WINDSOR GROUP DEPOSITS



# RAWDON EAST AND SMITHFIELD – VTEM CONDUCTORS



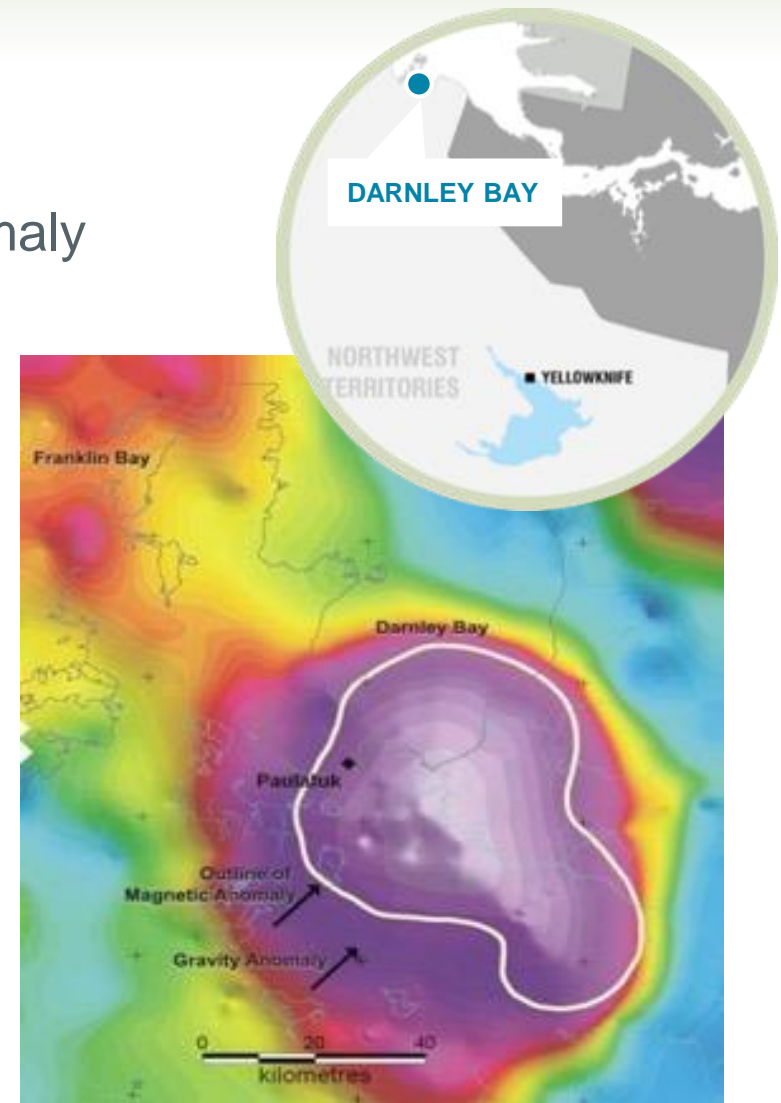
VTEM EM dB/dt Time Constant (ms)

# DARNLEY BAY

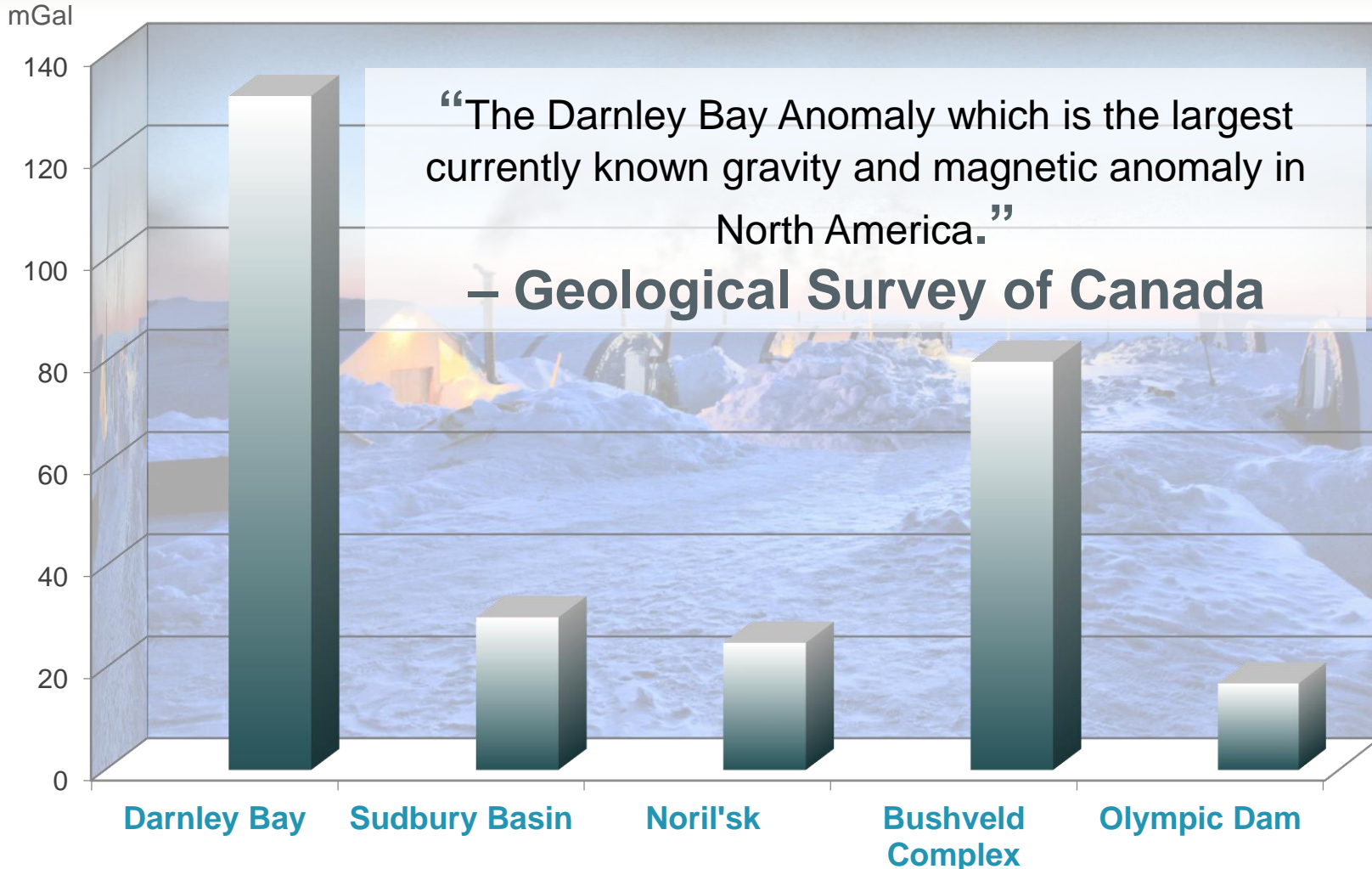
## GRAVITY-MAG ANOMALY

### Largest land-based gravity anomaly in the world; 60x100 km

- Similar-sized coincident magnetic anomaly
- Located on the Arctic coast near Town of Paulatuk
- Held under agreement with Inuvialuit Regional Corp.
- **\$20 million** spent to date
- Previous drilling on old targets not successful
- 2018 MT survey completed 117 MT stations
- Four high priority targets identified as drill targets



# GRAVITY ANOMALY COMPARISON

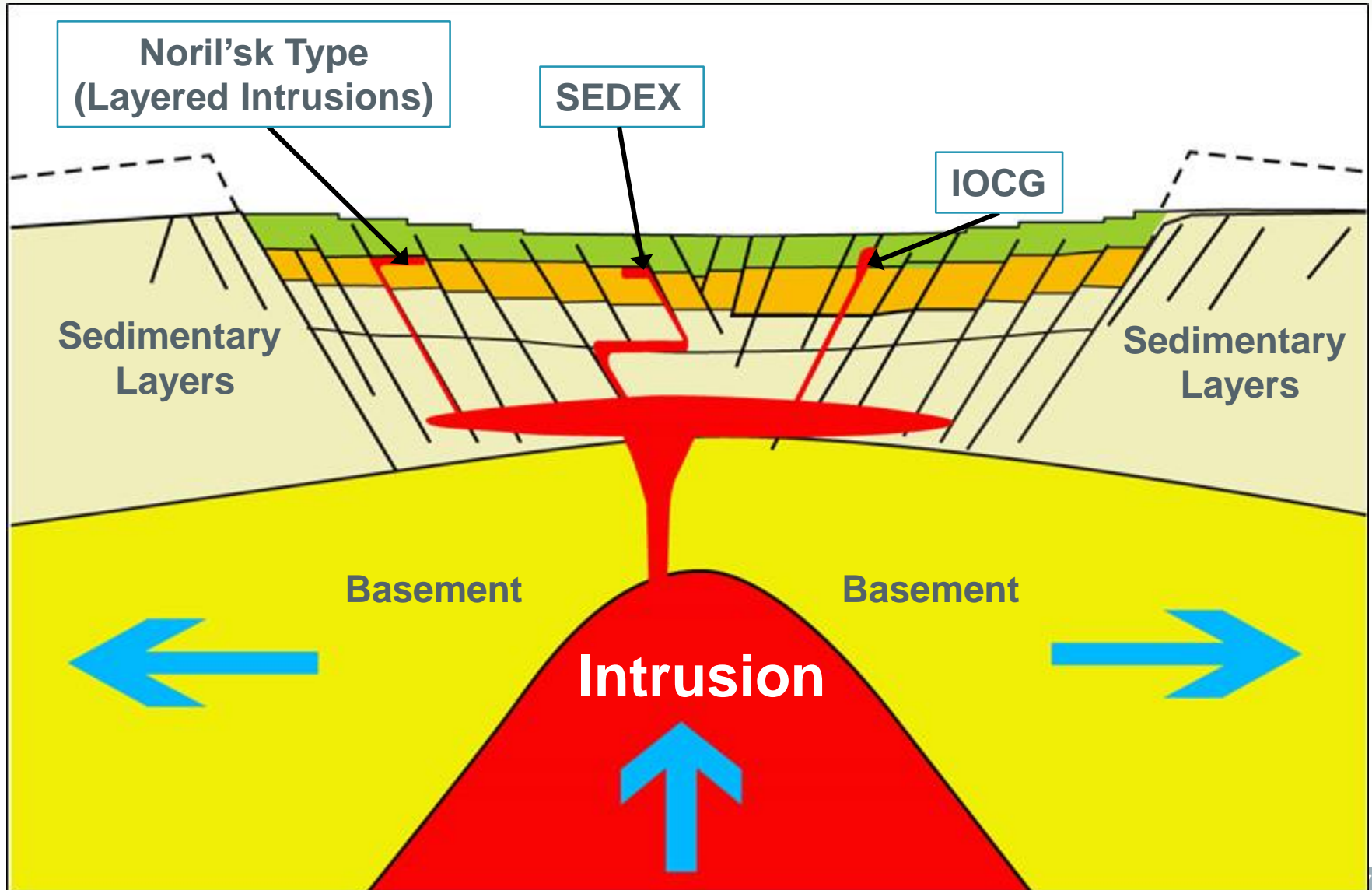




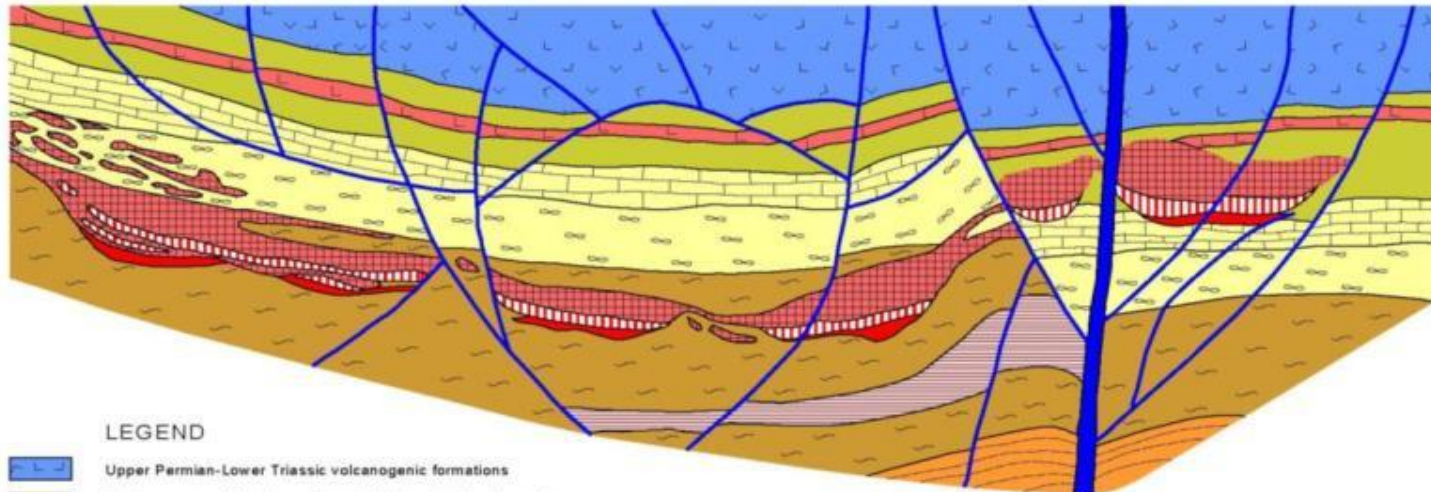
# CONCEPTUAL MODEL

## DEPOSIT TYPES FOUND IN RIFTED BASINS




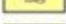
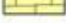


GENERATIONMINING





# NORIL'SK (VERTICAL SECTION)



## LEGEND

-  Upper Permian-Lower Triassic volcanogenic formations
-  Terrigenous coal-bearing sediments of Upper Carboniferous to Upper Permian Age.
-  Devonian carbonate sulphate sediments
-  Devonian carbonate sediments
-  Lower-Middle Devonian carbonate sediments
-  Silurian carbonate sediments
-  Dolerites-Gabbros

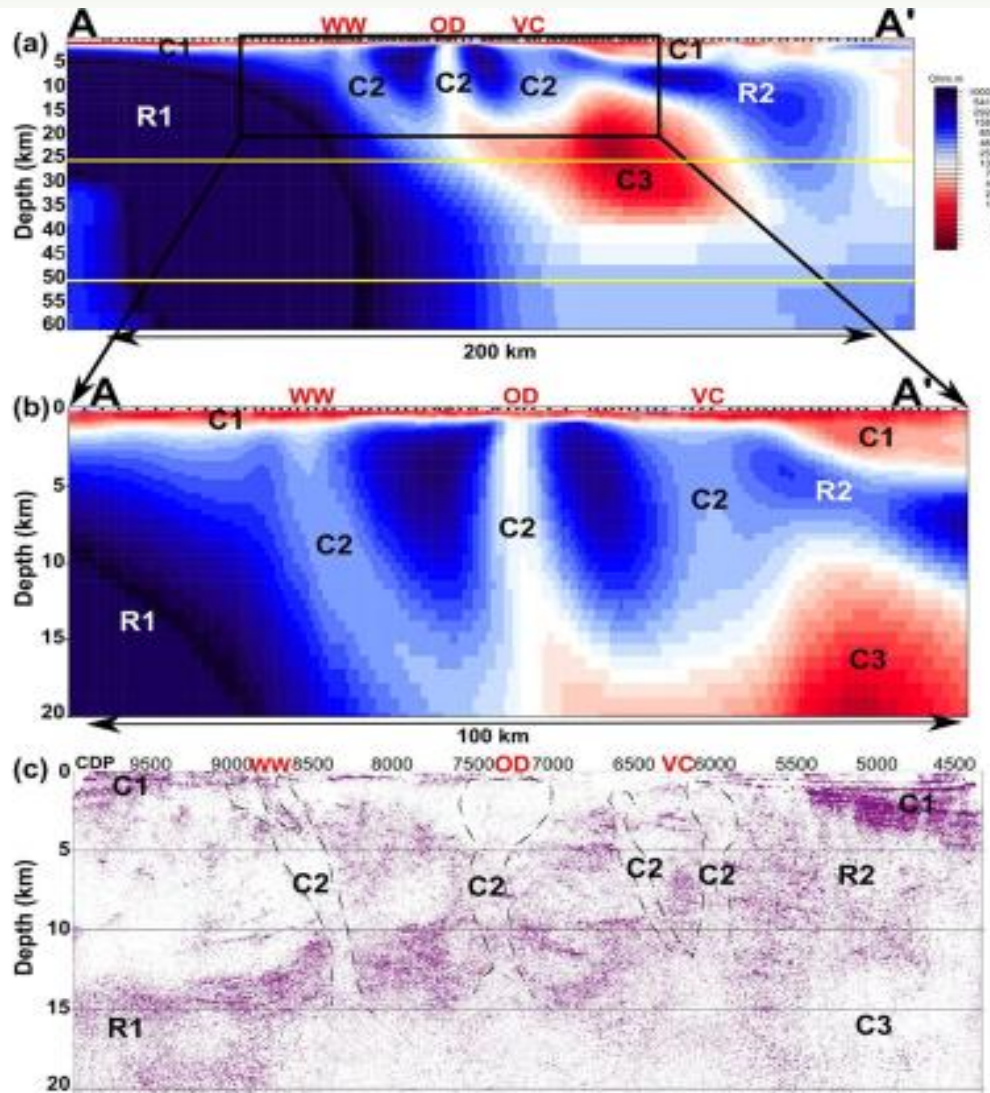
## Talnakh group of intrusions

-  Contact gabbro-dolerites; upper taxitic gabbro-dolerites; gabbro-dolerites; non-olivine, olivine-bearing, olivine and olivine-biotite, gabbro-dolerites
-  Picritic, taxitic and contact gabbro-diorites with disseminated Cu-Ni sulphide ores
-  Massive (rich) Cu-Ni ores
-  Lower Talnakh intrusion
-  Major suture of Noril'sk-Kharayelakh fault
-  Other disruptive irregularities

Noril'sk Kharayelakhsky Fault

## SCHEMATIC EAST-WEST GEOLOGICAL SECTION OF THE TALNAKH ORE BODY

Reference SEG SP 1 NORIL'SK



The “Hand of God”  
MT conductor  
connecting C3 in  
the mantle to  
Olympic Dam (OD)

## MT Resistivity/Depth Profile

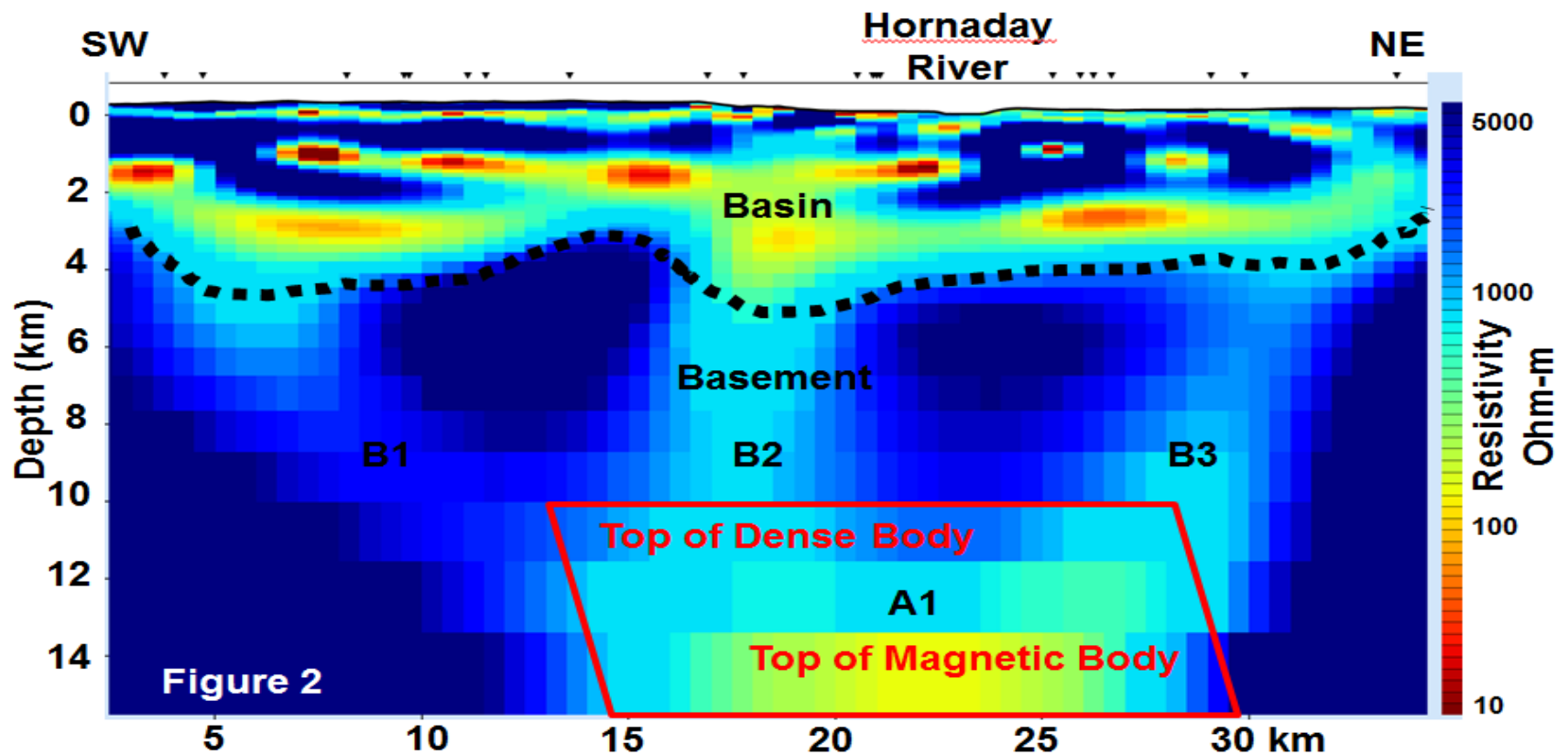
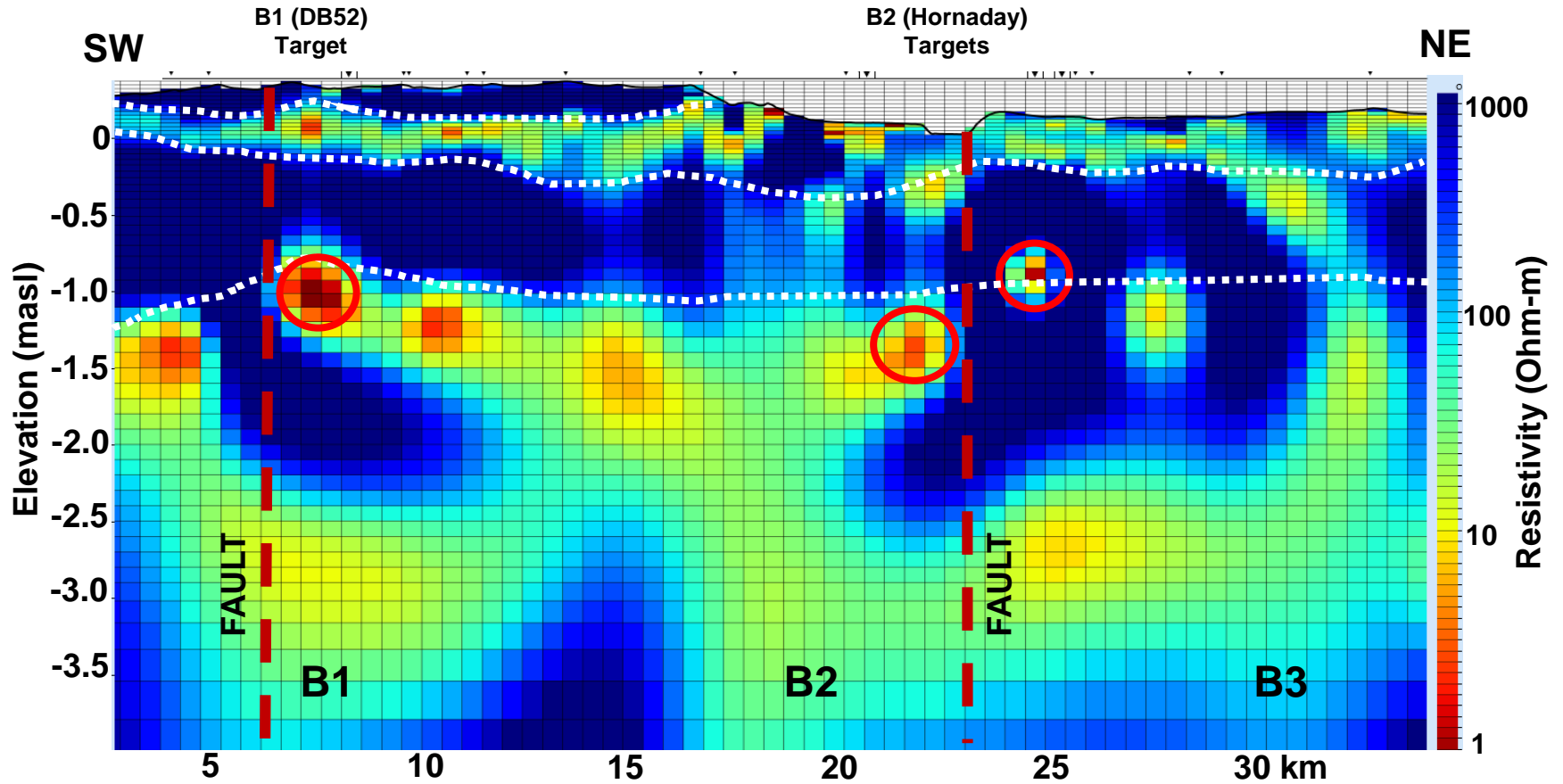


Figure 2

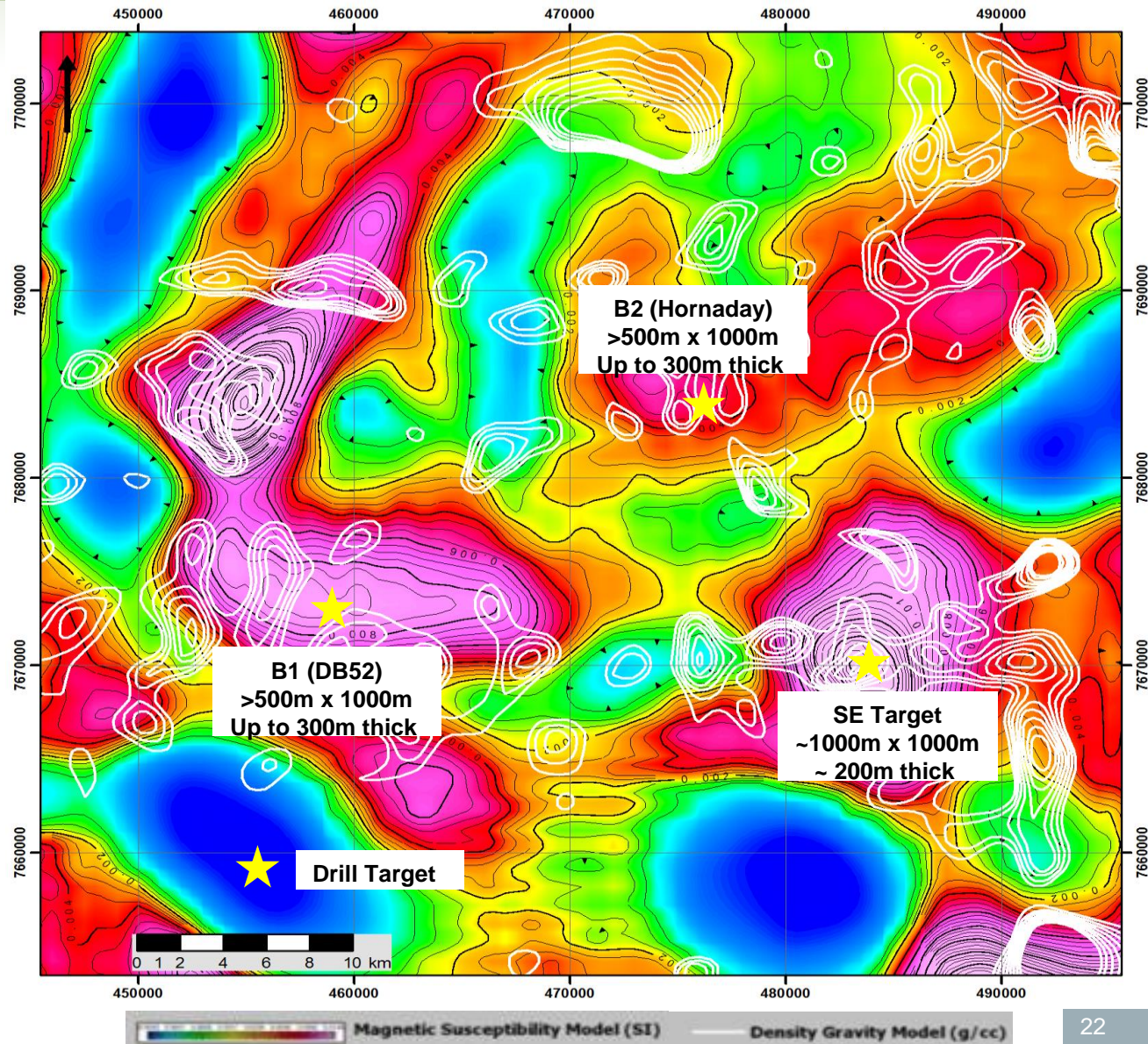
# INTERPRETED MT RESISTIVITY SECTION / EXPLORATION TARGETS

GENERATIONMINING

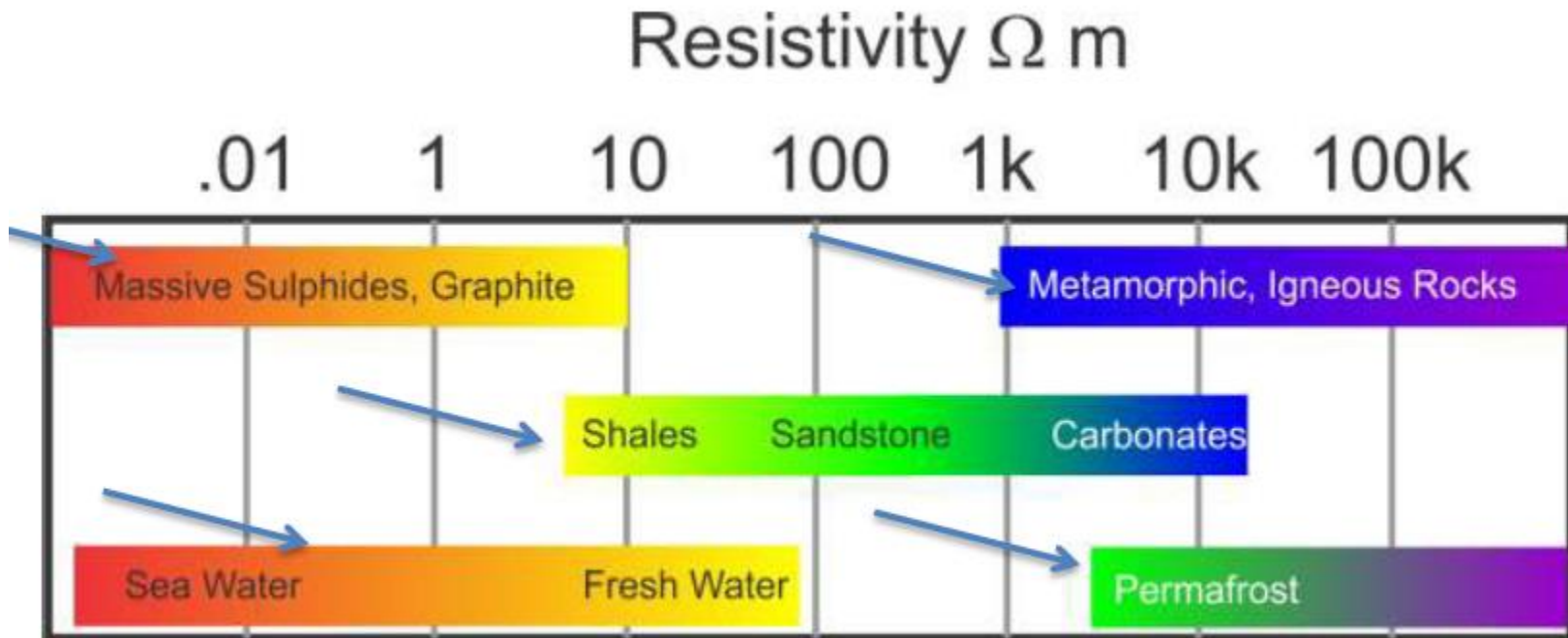


# MT TARGETS WITH MAG AND GRAVITY GENERATIONMINING

3 MT anomalies over the Magnetic Model (colour image) with Gravity Model (highest value contours in white)



# ROCK TYPES AT VARIOUS RESISTIVITIES



# DARNLEY BAY INFRASTRUCTURE

GENERATIONMINING

- Commercial airport (3X per week)
- Hotel, medical, internet, fuel
- Located within 5 km of drill targets





# CORPORATE STRUCTURE


GENERATIONMINING

**45,469,934**  
Shares

**12,884,000**  
Warrants

**3,000,000**  
Options

**25%**  
Insiders Control



# INVESTOR RELATIONS

**JAMIE LEVY**  
**President & CEO**

[jlevy@genmining.com](mailto:jlevy@genmining.com)  
Phone: 416 567-2440

1700-80 Richmond Street West  
Toronto, Ontario, Canada M5H 2A4