



Coral Identification Guide

NAFO Area



ISBN: 978-0-9698167-7-5

"Creative Commons Attribution-Non Commercial 2.5 Canada": deed applies: You are free to copy and distribute the work and to make derivative works under the following conditions: Attribution - you must attribute the work in the manner specified by the author or licensor, and Noncommercial - you may not use this work for commercial purposes. Any of these conditions can be waived if you get permission from the copyright holder. Your fair dealing and other rights are in no way affected by the above. Further details from <http://creativecommons.org/licenses/by/2.5/ca/legalcode.en>

Contributors

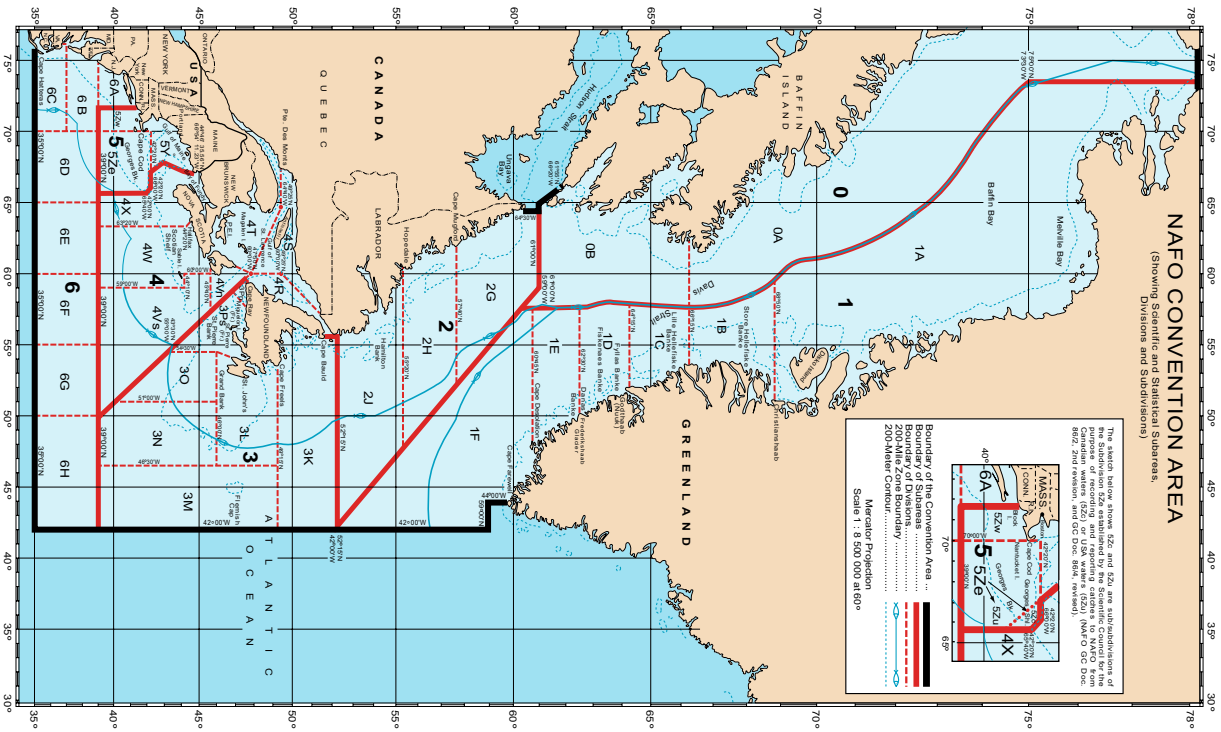
E. Kenchington, M. Best, A. Cogswell, K. MacIsaac, F. J. Murillo-Perez, B. MacDonald, V. Wareham, S. D. Fuller, H. I. Ø. Jørgensbye, V. Skylar and A. B. Thompson
NAFO Scientific Council Studies, 2009, Number 42.
doi:10.2960/S.v42.

Photo credits

F.J. Murillo-Perez, Instituto Español de Oceanografía (ECOVUL/ARPA project), Vigo, Spain: Page 3 bottom; Page 21 top. V. Wareham, Department of Fisheries and Oceans, St. John's, Newfoundland and Labrador, Canada: Page 1 both; Page 2 bottom; Page 5 top; Page 9 bottom right; Page 11 bottom; Page 15 top; Page 22 middle. T. Patrocinio, Instituto Español de Oceanografía (ECOVUL/ARPA project), Vigo, Spain: Page 7 top.
M. Butler, Ecology Action Centre, Halifax, Nova Scotia, Canada: Page 7 bottom. S.C. France, Department of Biology, The University of Louisiana, Lafayette, Louisiana, USA: Page 6.

All other photos courtesy of the Department of Fisheries and Oceans, Ecosystem Research Division, Bedford Institute of Oceanography, Dartmouth, Nova Scotia, Canada.

Printed and Distributed in December 2009
Northwest Atlantic Fisheries Organization
P.O. Box 638, Dartmouth, Nova Scotia
Canada B2Y 3Y9
Tel: (+1-902) 468-5590 • Fax (+1-902) 468-5538
www.nafo.int



NAFO CONVENTION AREA

(Showing Scientific and Statistical Subareas)

The sketch below shows 5Zc and 5Zd are sub-subdivisions of subarea 5Z and are not delineated for the purposes of the Convention. The boundary of the Convention Area is shown in solid black. The boundary of the subareas is shown in dashed red. The boundary of the statistical subareas is shown in dotted red. The 200-Meter Contour is shown in dashed blue. The map is a Mercator Projection. Scale 1 : 8 500 000 at 60°.

Boundary of the Convention Area: ————

Boundary of Subareas: - - - - -

Boundary of Statistical Subareas: ·····

200-Meter Contour: - · - · -

Mercator Projection: ·····

Scale 1 : 8 500 000 at 60°

Preface

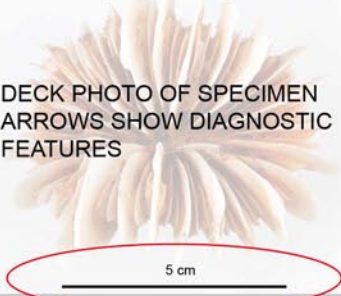
This book is intended as a pictorial identification guide for some species of coral found on the Grand Banks of Newfoundland and on Flemish Cap. Some species also occur more broadly in NAFO Divisions 1, 2, 3, 4 and 5, however Divisions 5 and 6 will contain many more species not yet included. Our intent was that the guide should be useful for at-sea identifications by non-specialists. It was written for fishers, fishery observers, scientific technicians and others who may not be familiar with coral identification. It is hoped that it will result in improved data collection for improving our knowledge of the distribution of these vulnerable marine species. Should users find specimens that do not fit the guide, or need assistance in identification, please contact:

Dr. Ellen Kenchington
Bedford Institute of Oceanography
Fisheries and Oceans Canada
1 Challenger Drive
Dartmouth, Nova Scotia, Canada
B2Y 4A2

Tel: (+1-902) 426-2030 • e-mail: Ellen.Kenchington@dfo-mpo.gc.ca

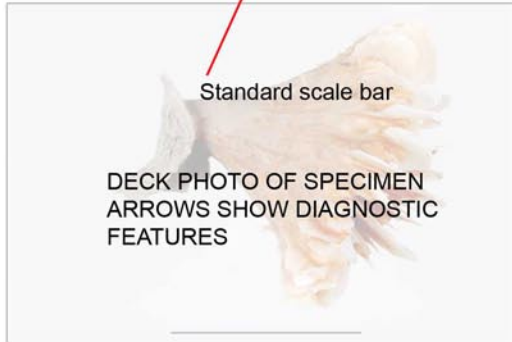
Scientific name of specimen in photo

DECK PHOTO OF SPECIMEN
ARROWS SHOW DIAGNOSTIC
FEATURES



Standard scale bar

DECK PHOTO OF SPECIMEN
ARROWS SHOW DIAGNOSTIC
FEATURES



Scientific name
Common name

ITIS TSN: ##### • ERMS AphiaID: #####

<http://www.itis.gov/>

<http://www.marbef.org/data/erms.php>

Colour range

Physical Description:

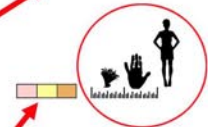
-
-

Size Information:

-

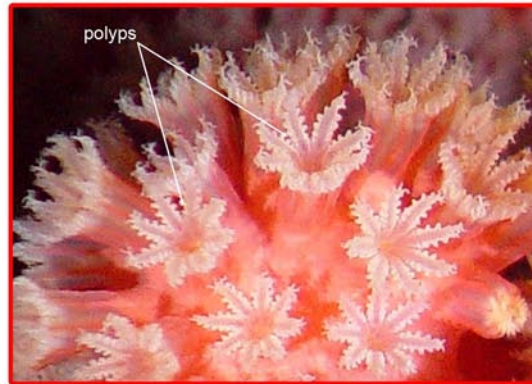
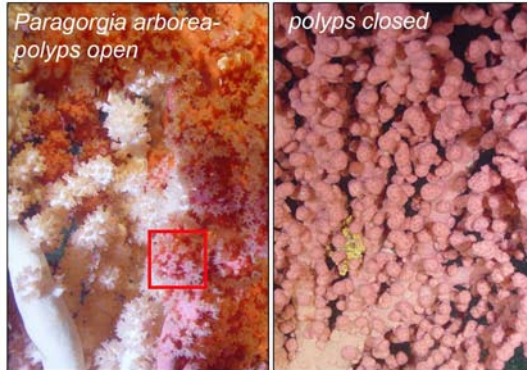
Habitat and Depth:

-



Relative size of coral to human

Terminology - Polyps

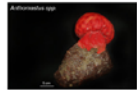


Physical Description:

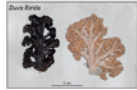
- Tubular flower-like structures used for both feeding and reproduction
- Polyps are always closed when specimen caught
- In a variety of forms and can be clustered or solitary depending on the species or size of the individual
- An example of a coral species composed of a single polyp is *Desmophyllum* spp. (Page 8)
- *Paragorgia arborea* is an example of a species with many hundreds of polyps per individual

Table of Contents

Alcyonacea (soft corals)



Anthomastus ----- 1



Duva ----- 2



Gersemia ----- 3



Nephtheidae ----- 4

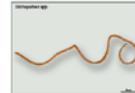
Page

Antipatharia (black corals)

Page



Stauropathes ----- 5



Stichopathes ----- 6

Scleractinia (hard corals)



Lophelia ----- 7

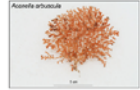


Desmophyllum ----- 8

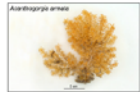


Flabellum ----- 9

Alcyonacea (branching corals)



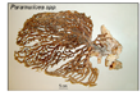
Acanella----- 10



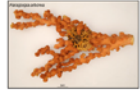
Acanthogorgia ----- 11



Keratoisis ----- 12



Paramuricea ----- 13



Paragorgia ----- 14-15



Primnoa ----- 16

Page



Radicipes ----- 17

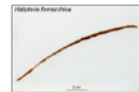
Pennatulacea (sea pens)



Anthoptilum ----- 18



Funiculina ----- 19



Halipteris ----- 20



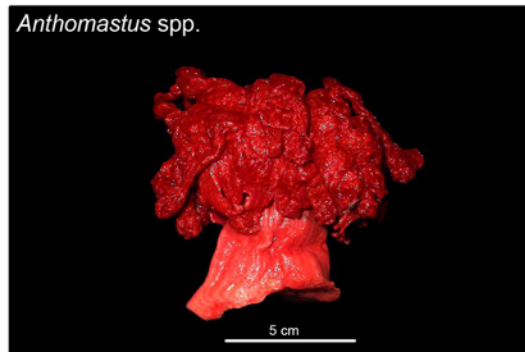
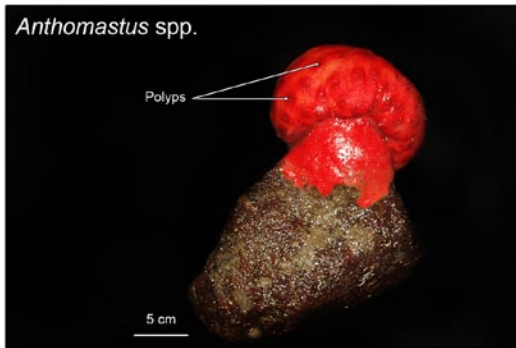
Ombellula ----- 21



Pennatula ----- 22-23

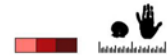
Page

This identification guide can be used with the NAFO Exploratory Fishery Data Collection Form. At present there are no simple species codes for corals, so use the scientific name at the top right corner of identification page. Corals can be difficult to weigh. Small samples should be cleared of any larger organisms (e.g. basket stars). All samples must be weighed and all corals of the same type should be weighed together. Record the weight to the nearest kilogram and use <1 kg for smaller samples. The weight of very large samples (over 100 kg) can be estimated by filling a fish box with the same species and weighing that. The remaining weight can be estimated by multiplying the weight of the coral in the fish box by the estimated unweighed volume. It is also useful to note the number of specimens and if they are broken.



Anthomastus

ITIS TSN: 52030 • ERMS AphiaID: 125285



Physical Description:

- Soft, mushroom shaped with cap and (usually) stalk, round to flat; large tentacles (if present) attached to cap; dot-like smaller polyps scattered between larger polyps
- Colour: light to dark red

Size Information:

- Up to 10cm diameter, but typically 5cm or less

Habitat and Depth:

- On hard bottom, attached to hard substrate; free on soft bottom; 170-1400m

D. florida



5 cm

D. florida



5 cm

Duva florida

ITIS TSN: 52047 • ERMS AphiaID:146764



Physical Description:

- Soft, branching, broccoli-like, with polyps in loose clusters, stem slightly rough to touch
- Colour: dark to tan

Size Information:

- Up to 25cm, but typically less than 15cm

Habitat and Depth:

- Attached to hard substrate on hard and soft bottom; 200-1500m

G. rubiformis



5 cm

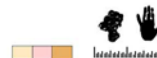
G. rubiformis



5 cm

Gersemia rubiformis

ITIS TSN 52037 • ERMS AphiaID:N/A



Physical Description:

- Soft but firm, branching, cauliflower-like to round, with polyps in tight clusters
- Colour: tan to pink

Size Information:

- Up to 10cm, but typically less than 5cm

Habitat and Depth:

- Attached to hard substrate on hard and soft bottom; 35-700m (can be common on fishing banks)

Nephtheidae



Other Nephtheidae

ITIS TSN: 52034• ERMS AphiaID: 146762



Physical Description:

- Soft or firmer, branching with polyps variable but may resemble clusters of grapes, stem smooth to touch
- Colour: white to tan to dark

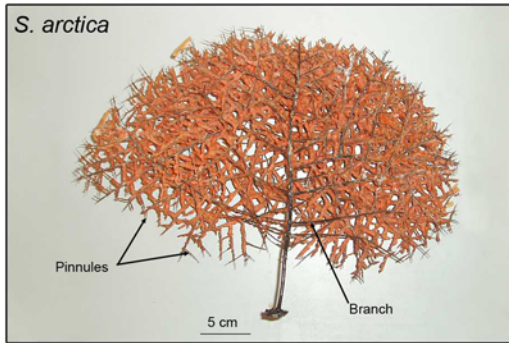
Size Information:

- Typically less than 25cm

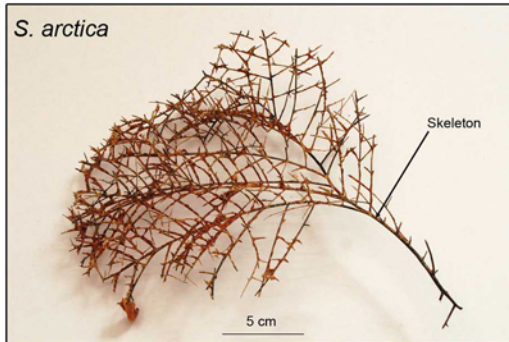
Habitat and Depth:

- Attached to hard substrate on hard and soft bottom; 200-1500m

S. arctica



S. arctica



Stauropathes arctica

ITIS TSN (Genus): 719057 • ERMS AphiaID:



Physical Description:

- Bush-like, densely branched on one plane causing flat appearance; two rows of small, unbranched pinnules (needles) on branches, often crossed and fusing with other branches/pinnules
- Colour: polyps orange, skeleton black

Size Information:

- Up to 80cm

Habitat and Depth:

- Hard bottom; 700-1850m

Stichopathes sp.



5 cm

Stichopathes

ITIS TSN: 51963 • ERMS AphiaID: 103308



Physical Description:

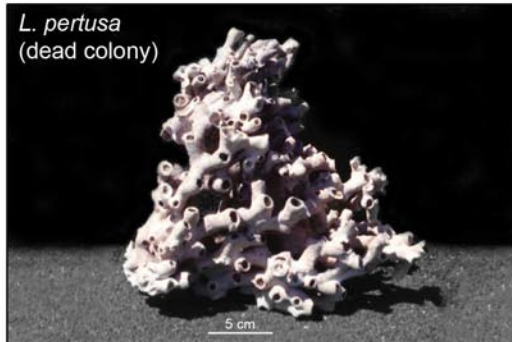
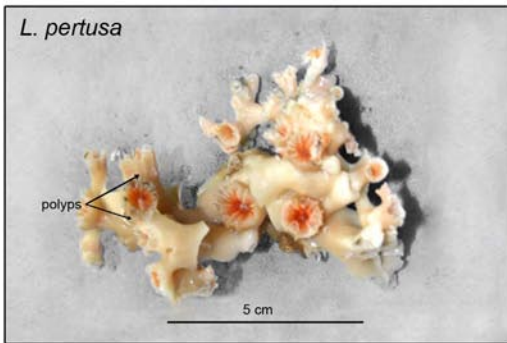
- Elongate and whip-like; spiralled
- Colour: polyps orange which can be peeled to reveal a black skeleton

Size Information:

- Up to 80cm

Habitat and Depth:

- Hard bottom; 700 - 1300m



Lophelia pertusa

Spider Hazards

ITIS TSN: 53706 • ERMS AphiaID: 135161



Physical Description:

- Hard, branching network crossed and fused
- Colour: tissue transparent white to orange-pink; skeleton white
- Reef-building

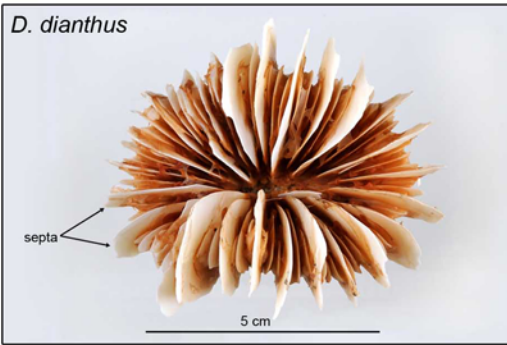
Size Information:

- Individual polyps several cm; colony up to 200cm; typically fragments collected

Habitat and Depth:

- Hard bottom; 200-1000m

D. dianthus



D. dianthus



Desmophyllum dianthus

ITIS TSN: 572071 • ERMS AphiaID: 135159



Physical Description:

- Hard, solitary, stalked, will show sign of breakage where removed from substrate; many blade-like plates (septa) at the top; relatively robust
- Colour: polyps transparent pink, yellow, or orange; skeleton white

Size Information:

- Up to 10cm

Habitat and Depth:

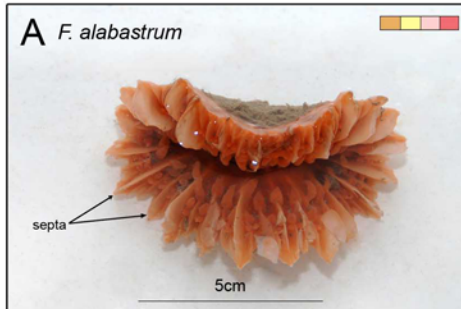
- Hard bottom, attached; 700-1400m



Flabellum

Flabellum alabastrum (A), *F. angulare* (B), *F. macandrewi* (C)

ITIS TSN: 572140 (A), 572141 (B), 53731 (C) • ERMS AphiaID: 135194 (A), 135195 (B), 135197 (C)



Physical Description:

- Hard, solitary, conical or cup-like; no stalk, with blade-like septa; skeletons are white
- A – Cup “pinched” in centre; tissue colourless to yellow, orange, pink or red
- B – Oval-shaped cup; tissue colourless to white to yellow
- C – Cup is fragmented; tissue colourless to pink, yellow or orange

Size Information:

- A – Up to 8cm
- B – Up to 8cm
- C – Up to 3cm

Habitat and Depth:

- A – Soft bottom; 200-2000m
- B – Soft bottom, 2200-3200m
- C – Soft bottom; 180-650m

Acanella spp.



Acanella spp.



Acanella

ITIS TSN (Genus): 52337 • ERMS AphiaID (Genus): 125303



Physical Description:

- Bush-like; skeleton stiff but delicate, segmented; branching base (sometimes missing)
- Colour: polyps pale to dark orange; skeleton white with darker bands

Size Information:

- Less than 30cm

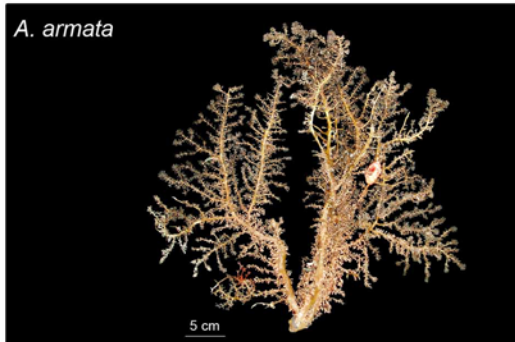
Habitat and Depth:

- Soft bottom; 150-2300m

A. armata



A. armata



Acanthogorgia armata

ITIS TSN: 52119 • ERMS AphiaID: 125348



Physical Description:

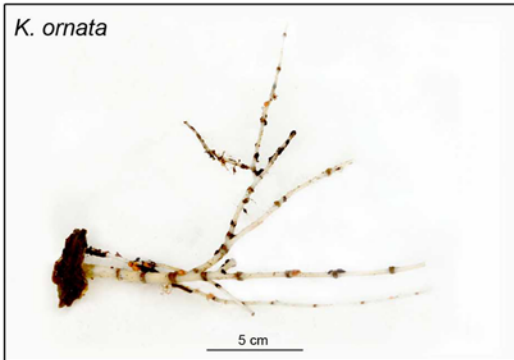
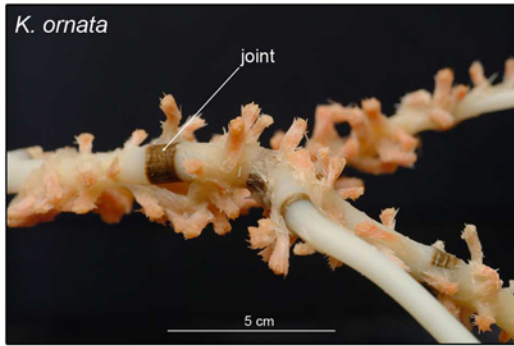
- Bushy, slightly flattened, rough to the touch; skeleton flexible
- Colour: polyps yellow (rarely blue), grey when dead; skeleton brown to grey

Size Information:

- Less than 20cm; occasionally up to 50cm

Habitat and Depth:

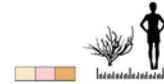
- Attached to hard substrate on hard and soft bottom, 170-1400m



Keratoisis ornata

Bamboo Coral

ITIS TSN (Genus): 52330 • ERMS AphiaID (Genus): 125306



Physical Description:

- Tree-like; hard and rigid; long, slender, sparse branches
- Colour: polyps pale pink to orange (may phosphoresce); skeleton white with golden-brown joints

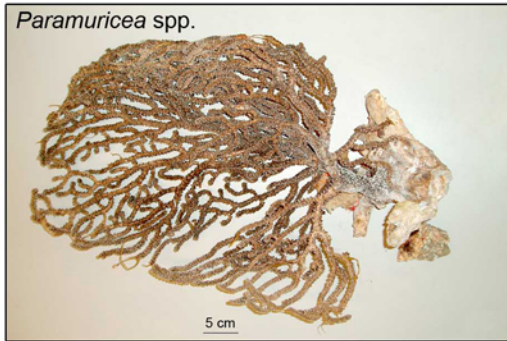
Size Information:

- Up to 150cm

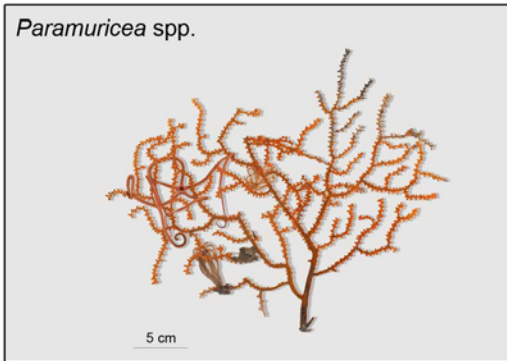
Habitat and Depth:

- Attached to hard substrate on hard and soft bottom; 200-1100m

Paramuricea spp.



Paramuricea spp.



Paramuricea

ITIS TSN (Genus): 52124 • ERMS AphiaID (Genus): 125311



Physical Description:

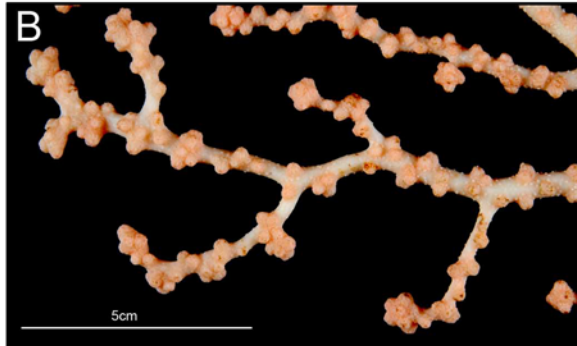
- Fan-like, curving branches; skeleton flexible, rough to touch
- Colour: polyps yellow to orange; grey to black when dead; skeleton green to brown

Size Information:

- Up to 80cm

Habitat and Depth:

- Hard bottom; 150-2200m



Paragorgia arborea (A)

P. johnsoni (B)

Bubblegum Coral

ITIS TSN: 52108 (A), 52107 (B) (Genus)

ERMS AphiaID: 125418 (A), 125419 (B)



Physical Description:

- A – Branches thicker with tips greater than 5mm; association with basket stars common (pictured)
- A – Colour: polyps white to tan, orange, pink and red, dark purple
- B – Branches thinner with tips 2-4mm
- B – Colour: polyps white to tan, orange, pink and red

Size Information:

- A – up to 600cm, typically broken pieces collected
- B – up to 100cm, typically broken pieces collected

Habitat and Depth:

- A – Hard bottom, 200-1300m
- B – Hard bottom, 800-4100m





Primnoa resedaeformis

Sea-corn Coral

ITIS TSN: 52307 • ERMS AphiaID: 125411



Physical Description:

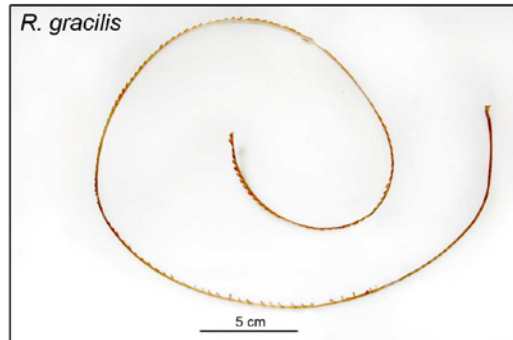
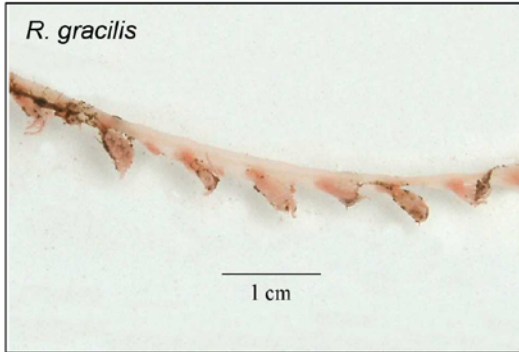
- Bush or tree-like; skeleton stiff yet flexible, hard and rigid at the base; conspicuous scale-like polyps
- Colour: polyps pink to orange, skeleton brown

Size Information:

- Up to 120cm

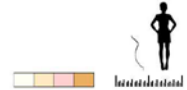
Habitat and Depth:

- Hard bottom, 150-1150m



Radicipes gracilis

ITIS TSN (Genus): 719055 • ERMS AphiaID: 125357



Physical Description:

- Slender, unbranched, whip-like, with slight spiral; skeleton flexible, stiff, with branching, root-like base; polyps located on one side of frond
- Colour: white to pink and orange, may be iridescent
- Lacks bulbous root

Size Information:

- Up to 90cm, but typically less

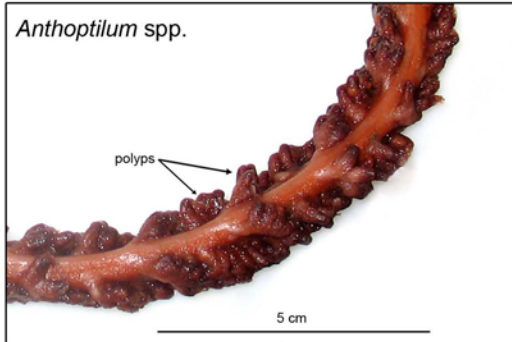
Habitat and Depth:

- Soft bottom; 400-1500m

Anthoptilum spp.

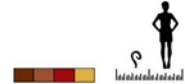


Anthoptilum spp.



Anthoptilum

ITIS TSN (Genus): 52401 • ERMS AphiaID (Genus): 128489



Physical Description:

- Elongate and whip-like, often “?” shaped; polyps at an angle to the main stem in two rows running its length, one side of the stem relatively bare of polyps; smooth to touch
- Colour: polyps brown to red, stalk brown to red or yellow
- Bulbous root

Size Information:

- Up to 100cm

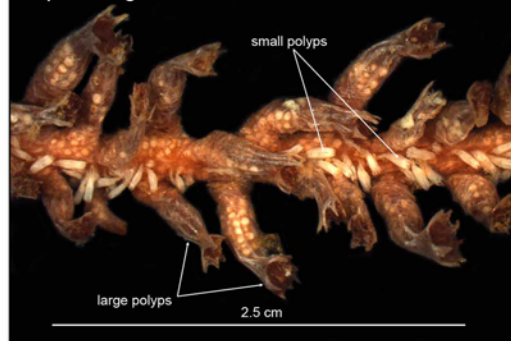
Habitat and Depth:

- Soft bottom; 150-2400m

F. quadrangularis

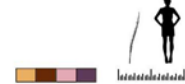


F. quadrangularis



Funiculina quadrangularis

ITIS TSN: 719232 • ERMS AphiaID: 128506



Physical Description:

- Elongate and whip-like, thin, tip often curled or coiled, two rows of large polyps; smaller polyps conspicuous and scattered sparsely on stalk
- Colour: polyps yellow, pink to purple with root white to yellow, orange and brown
- Bulbous root

Size Information:

- Up to 210cm

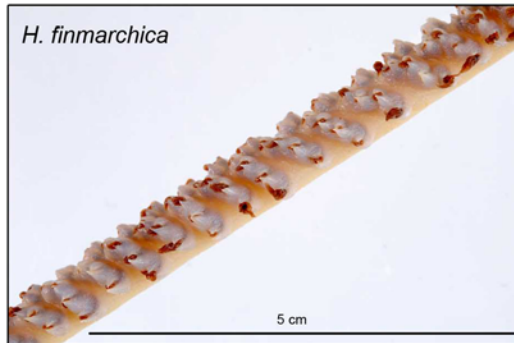
Habitat and Depth:

- Soft bottom; 100-2700m

H. finmarchica

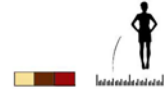


H. finmarchica



Halipteris finmarchica

ITIS TSN: 719237 • ERMS AphiaID: 128509



Physical Description:

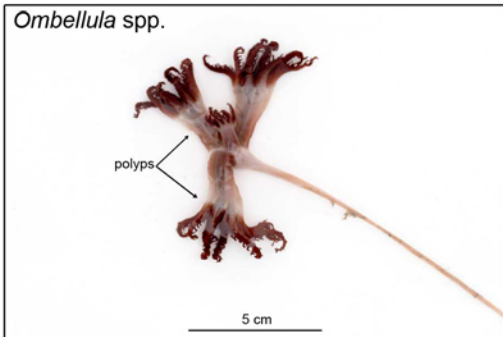
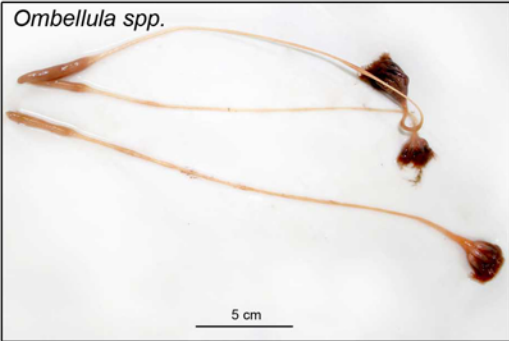
- Elongate and whip-like, polyps in rows at angle to the main stem on raised ridges, rough to touch, tip often bare or with anemones attached
- Colour: polyps brown to red, stalk white to yellow
- Bulbous root

Size Information:

- Up to 125cm

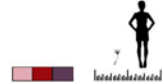
Habitat and Depth:

- Soft bottom; 110-1800m



Ombellula

ITIS TSN (Genus): 719032 • ERMS AphiaID (Genus): 128499



Physical Description:

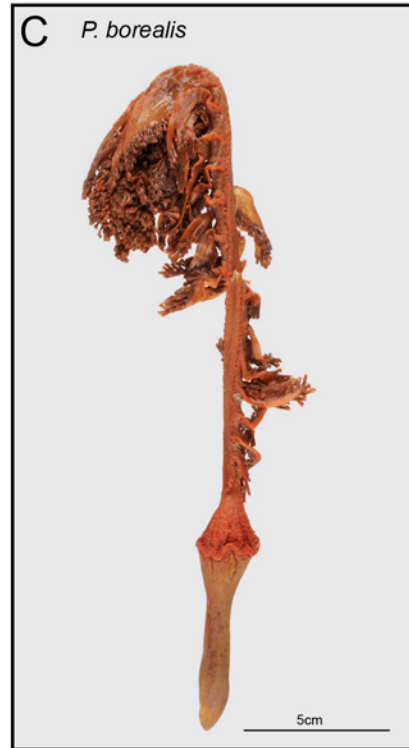
- Elongate, thin, with large polyps in cluster at top of stem
- Colour: polyps pink to red to brown, stalk white or pink

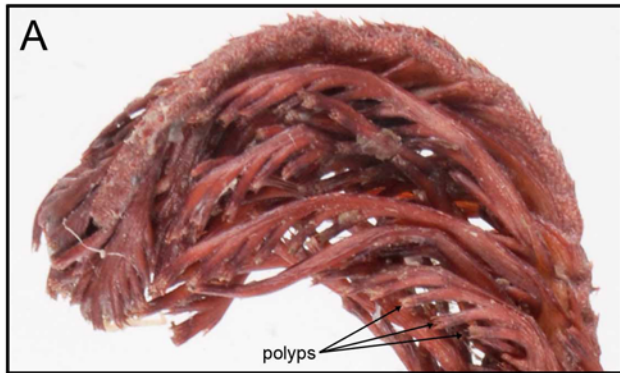
Size Information:

- Up to 50cm

Habitat and Depth:

- Soft bottom; 200-2600m





Pennatula

Pennatula aculeata (A)

P. phosphorea (B)

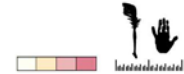
P. borealis (C)

ITIS TSN: 52418 (A), 52419 (B), 52422 (C)

ERMS AphiaID: 128515 (A), 128517 (B), 128516 (C)

Size Information:

- A – Up to 40cm
- B – Up to 40cm
- C – Up to 40cm and greater



Physical Description:

- Feather-like, with polyp leaves
- A – few polyps on larger leaves; 20 or less/leaf
- B – few polyps on larger leaves, 20 or less/leaf; thicker stalk than A
- C – many polyps on larger leaves; 30 or more/leaf
- Colour typically red to pink, but variable

Habitat and Depth:

- A – Soft bottom, 100-500m and deeper
- B – Soft bottom, 10-100m and deeper
- C – Soft bottom, 200-2300m