

# OREGON BLUE MOUNTAINS ECOREGION

## G1 and G2 Species Habitat Management Guidelines

### INTRODUCTION

The Sustainable Forestry Initiative (SFI) 2022 Standards include requirements that promote and conserve Forests with Exceptional Conservation Value (FECV). This fact sheet summarizes the analysis of FECV habitat within this ecoregion and provides habitat management recommendations that would benefit species potentially found here.

### HABITAT TYPES

- River/Riparian
- Mixed conifer forest
- Rocky Outcropping
- Forest edge

### RIVER/RIPARIAN MANAGEMENT

- Protect known locations
- Maintain well vegetated riparian buffers
- Plant a diversity of both hardwood and conifer trees in the riparian zone
- Retain large diameter trees near streams and rivers
- Buffer wetlands, springs, and headwater areas

### MIXED CONIFER FOREST MANAGEMENT

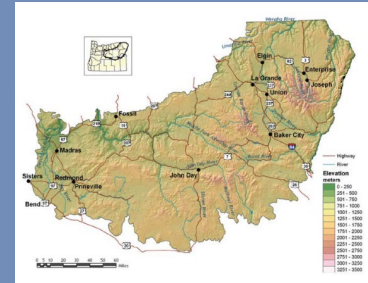
- Protect known locations
- Retain legacy trees, stumps, and logs
- Retain large diameter trees with cavities or broken tops
- Leave skips and gaps with dense shrub component
- Retain large slash into piles

### SPECIAL SITES MANAGEMENT (ROCKY OUTCROPPING)

- Protect known locations
- Buffer special sites

### FOREST EDGE MANAGEMENT

- Protect known locations
- Buffer special sites



**Blue Mountains Ecoregion**



**Red-fruited lomatium**



**Spalding's campion**

*All management recommendations assume that operators and land managers are following all applicable BMPs, laws, and regulations.*

# OREGON BLUE MOUNTAINS ECOREGION

## G1 and G2 Species Habitat Management Guidelines

SCIENTIFIC NAME	COMMON NAME	HABITAT	Status
<i>Lomatium greenmanii</i>	<a href="#">Greenman's lomatium</a>	Forest Edge	G1
<i>Lomatium erythrocarpum</i>	<a href="#">Red-fruited lomatium</a>	Forest Edge	G1G2
<i>Silene spaldingii</i>	<a href="#">Spalding's campion</a>	Forest Edge	G2
<i>Megomphix lutarius</i>	<a href="#">Umatilla megomphix (snail)</a>	Mixed Conifer Forest	G1G2
<i>Allium tribracteatum</i>	<a href="#">Three-leaved onion</a>	Mixed Conifer Forest	G2
<i>Astragalus tyghensis</i>	<a href="#">Tygh Valley milk-vetch</a>	Mixed Conifer Forest	G2
<i>Eriogonum cusickii</i>	<a href="#">Cusick's eriogonum</a>	Mixed Conifer Forest	G2
<i>Juga newberryi</i>	<a href="#">A freshwater snail</a>	River/Riparian	G1
<i>Taylorconcha insperata</i>	<a href="#">A freshwater snail</a>	River/Riparian	G1
<i>Juga sp. 2</i>	<a href="#">Blue Mountains juga (snail)</a>	River/Riparian	G1
<i>Juga bulbosa</i>	<a href="#">Bulb juga (snail)</a>	River/Riparian	G1
<i>Colligyryus depressus</i>	<a href="#">Harney Basin duskysnail</a>	River/Riparian	G1
<i>Scaphinotus manni</i>	<a href="#">Mann's mollusk-eating ground beetle</a>	River/Riparian	G1G2
<i>Isoetes minima</i>	<a href="#">Midget quillwort</a>	River/Riparian	G1G2
<i>Fluminicola fuscus</i>	<a href="#">Columbia pebblesnail</a>	River/Riparian	G2
<i>Erythranthe hymenophylla</i>	<a href="#">Membrane-leaved monkeyflower</a>	River/Riparian	G2
<i>Fisherola nuttalli</i>	<a href="#">Shortface lanx (=Giant Columbia River limpet)</a>	River/Riparian	G2
<i>Cryptomastix hendersoni</i>	<a href="#">Columbia Gorge oregonian (snail)</a>	River/Riparian	G2Q
<i>Ogaridiscus subrupicola</i>	<a href="#">Southern tightcoil (snail)</a>	Rocky Outcropping	G1
<i>Lomatium pastorale</i>	<a href="#">Meadow lomatium</a>	Rocky Outcropping	G1G2
<i>Oreohelix sp. 29</i>	<a href="#">Hells Canyon mountainsnail</a>	Rocky Outcropping	G2
<i>Cryptomastix populi</i>	<a href="#">Poplar Oregonian (snail)</a>	Rocky Outcropping	G2
<i>Castilleja lutea</i>	<a href="#">Yellow paintbrush</a>	Rocky Outcropping	G2

\*species links provided when available

All management recommendations assume that operators and land managers are following all applicable BMPs, laws, and regulations.

# COAST RANGE ECOREGION

## G1 and G2 Species Habitat Management Guidelines

### INTRODUCTION

The Sustainable Forestry Initiative (SFI) 2022 Standards include requirements that promote and conserve Forests with Exceptional Conservation Value (FECV). This fact sheet summarizes the analysis of FECV habitat within this ecoregion and provides habitat management recommendations that would benefit species potentially found here.

### HABITAT TYPES

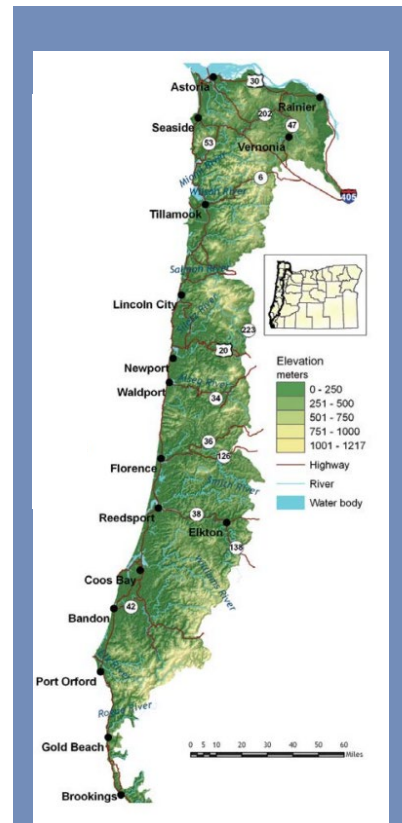
- Mixed Conifer Forest
- River/Riparian

### MIXED CONIFER FOREST MANAGEMENT

- Protect known locations
- Retain legacy trees, stumps, and logs
- Retain large diameter trees with cavities or broken tops
- Leave skips and gaps with dense shrub component
- Retain large slash into piles

### RIVER/RIPARIAN MANAGEMENT

- Protect known locations
- Maintain well vegetated riparian buffers
- Plant a diversity of both hardwood and conifer trees in the riparian zone
- Retain large diameter trees near streams and rivers
- Buffer wetlands, springs, and headwater areas



Coast Range Ecoregion



Mardon Skipper

*All management recommendations assume that operators and land managers are following all applicable BMPs, laws, and regulations.*

# COAST RANGE ECOREGION

## G1 and G2 Species Habitat Management Guidelines

SCIENTIFIC NAME	COMMON NAME	HABITAT	Status
<i>Castilleja chambersii</i>	<a href="#">Chambers' paintbrush</a>	Mixed Conifer Forest	G1
<i>Driloleirus macelfreshi</i>	<a href="#">Oregon giant earthworm</a>	Mixed Conifer Forest	G1
<i>Hemphillia burringtoni</i>	<a href="#">Keeled jumping-slug</a>	Mixed Conifer Forest	G1G2
<i>Lilium occidentale</i>	<a href="#">Western lily</a>	Mixed Conifer Forest	G1G2
<i>Delphinium pavonaceum</i>	<a href="#">Peacock larkspur</a>	Mixed Conifer Forest	G1Q
<i>Triquetrella californica</i>	<a href="#">California triquetrella moss</a>	Mixed Conifer Forest	G2
<i>Synthyris schizantha</i>	<a href="#">Fringed kittentail</a>	Mixed Conifer Forest	G2
<i>Polites mardon</i>	<a href="#">Mardon skipper (butterfly)</a>	Mixed Conifer Forest	G2
<i>Castilleja mendocinensis</i>	<a href="#">Mendocino coast paintbrush</a>	Mixed Conifer Forest	G2
<i>Cardamine pattersonii</i>	<a href="#">Saddle Mt. bittercress</a>	Mixed Conifer Forest	G2
<i>Thermopsis robusta</i>	<a href="#">Showy golden-banner</a>	Mixed Conifer Forest	G2
<i>Ribes erythrocarpum</i>	<a href="#">Crater Lake Currant</a>	Mixed Conifer Forest	G2
<i>Pterostichus rothi</i>	<a href="#">Roth's blind ground beetle</a>	Mixed Conifer Forest	G2
<i>Pomatiopsis chacei</i>	<a href="#">Marsh walker (snail)</a>	River/Riparian	G1
<i>Pomatiopsis californica</i>	<a href="#">Pacific walker (snail)</a>	River/Riparian	G1
<i>Pomatiopsis binneyi</i>	<a href="#">Robust walker (snail)</a>	River/Riparian	G1
<i>Hochbergellus hirsutus</i>	<a href="#">Sisters hesperian (snail)</a>	River/Riparian	G1
<i>Grylloblatta chintimini</i>	<a href="#">Marys peak ice cricket</a>	River/Riparian	G1
<i>Pristiloma pilsbryi</i>	<a href="#">Crowned tightcoil (snail)</a>	River/Riparian	G1G2
<i>Juga sp. 3</i>	<a href="#">Brown juga (snail)</a>	River/Riparian	G1Q
<i>Physella hordacea</i>	<a href="#">Grain physa (snail)</a>	River/Riparian	G1Q
<i>Vorticifex neritoides</i>	<a href="#">Nerite ramshorn (snail)</a>	River/Riparian	G1Q
<i>Vespericola sp. 31</i>	<a href="#">Yamhill hesperian (snail)</a>	River/Riparian	G1Q
<i>Pterostichus brachylobus</i>	<a href="#">A carabid beetle</a>	River/Riparian	G2
<i>Erythronium elegans</i>	<a href="#">Coast Range fawn-lily</a>	River/Riparian	G2
<i>Dodecatheon austrofrigidum</i>	<a href="#">Frigid shootingstar</a>	River/Riparian	G2
<i>Lepidostoma astanea</i>	<a href="#">Goeden's lepidostoman caddisfly</a>	River/Riparian	G2
<i>Acipenser medirostris</i>	<a href="#">Green sturgeon</a>	River/Riparian	G2
<i>Fluminicola virens</i>	<a href="#">Olympia pebblesnail</a>	River/Riparian	G2
<i>Rhyacophila haddocki</i>	<a href="#">Haddock's rhyacophilan caddisfly</a>	River/Riparian	G2
<i>Juga orickensis</i>	<a href="#">Redwood juga (snail)</a>	River/Riparian	G2Q

\*species links provided when available

All management recommendations assume that operators and land managers are following all applicable BMPs, laws, and regulations.

# COLUMBIA PLATEAU ECOREGION

## G1 and G2 Species Habitat Management Guidelines

### INTRODUCTION

The Sustainable Forestry Initiative (SFI) 2022 Standards include requirements that promote and conserve Forests with Exceptional Conservation Value (FECV). This fact sheet summarizes the analysis of FECV habitat within this ecoregion and provides habitat management recommendations that would benefit species potentially found here.

### HABITAT TYPES

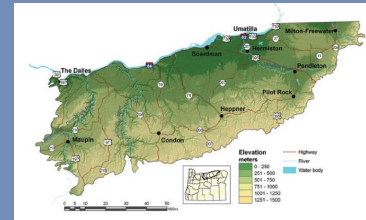
- Mixed Conifer Forest
- River/Riparian

### MIXED CONIFER FOREST MANAGEMENT

- Protect known locations
- Retain legacy trees, stumps, and logs
- Retain large diameter trees with cavities or broken tops
- Leave skips and gaps with dense shrub component
- Retain large slash into piles

### RIVER/RIPARIAN MANAGEMENT

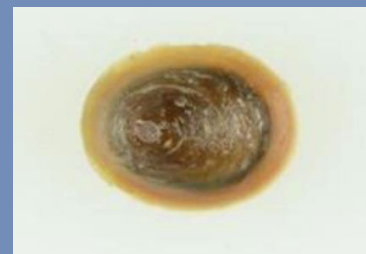
- Protect known locations
- Maintain well vegetated riparian buffers
- Plant a diversity of both hardwood and conifer trees in the riparian zone
- Retain large diameter trees near streams and rivers
- Buffer wetlands, springs, and headwater areas



**Columbia Plateau Ecoregion**



**Columbia pebblesnail**



**Shortface lanx**

*All management recommendations assume that operators and land managers are following all applicable BMPs, laws, and regulations.*

# COLUMBIA PLATEAU ECOREGION

## G1 and G2 Species Habitat Management Guidelines

SCIENTIFIC NAME	COMMON NAME	HABITAT	Status
<i>Vespericola depressus</i>	<a href="#">Columbia Gorge hesperian (snail)</a>	Mixed Conifer Forest	G2Q
<i>Juga newberryi</i>	<a href="#">A freshwater snail</a>	River/Riparian	G1
<i>Juga hemphilli</i>	<a href="#">Barren juga</a>	River/Riparian	G1
<i>Juga bulbosa</i>	<a href="#">Bulb juga (snail)</a>	River/Riparian	G1
<i>Vespericola sp. 1</i>	<a href="#">Oak Springs hesperian (snail)</a>	River/Riparian	G1
<i>Fluminicola sp. 17</i>	<a href="#">Tuscan pebblesnail</a>	River/Riparian	G1
<i>Juga sp. 7</i>	<a href="#">Three-band juga (snail)</a>	River/Riparian	G1Q
<i>Fluminicola fuscus</i>	<a href="#">Columbia pebblesnail</a>	River/Riparian	G2
<i>Fisherola nuttalli</i>	<a href="#">Shortface lanx (=Giant Columbia River limpet)</a>	River/Riparian	G2
<i>Juga sp. 1</i>	<a href="#">Basalt juga (snail)</a>	River/Riparian	G2Q
<i>Cryptomastix hendersoni</i>	<a href="#">Columbia Gorge oregonian (snail)</a>	River/Riparian	G2Q

*\*species links provided when available*



# EAST CASCADES ECOREGION

## G1 and G2 Species Habitat Management Guidelines

### INTRODUCTION

The Sustainable Forestry Initiative (SFI) 2022 Standards include requirements that promote and conserve Forests with Exceptional Conservation Value (FECV). This fact sheet summarizes the analysis of FECV habitat within this ecoregion and provides habitat management recommendations that would benefit species potentially found here.

### HABITAT TYPES

- Forest Edge
- Meadows
- Mixed Conifer Forest
- River/Riparian

### FOREST EDGE AND MEADOW MANAGEMENT

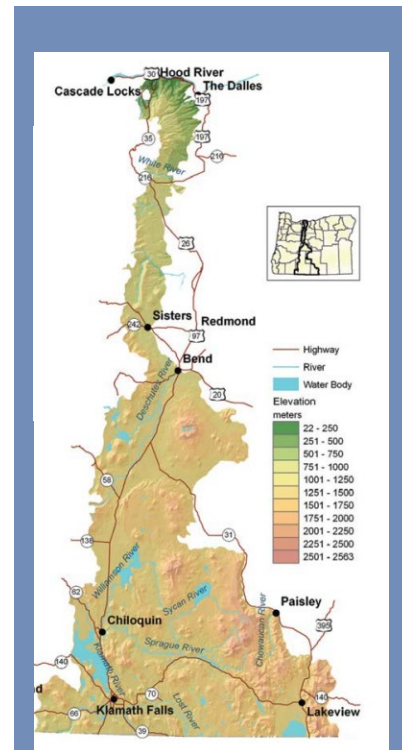
- Protect known locations
- Buffer special sites

### MIXED CONIFER FOREST MANAGEMENT

- Protect known locations
- Retain legacy trees, stumps, and logs
- Retain large diameter trees with cavities or broken tops
- Leave skips and gaps with dense shrub component
- Retain large slash into piles

### RIVER/RIPARIAN MANAGEMENT

- Protect known locations
- Maintain well vegetated riparian buffers
- Plant a diversity of both hardwood and conifer trees in the riparian zone
- Retain large diameter trees near streams and rivers
- Buffer wetlands, springs, and headwater areas



East Cascades Ecoregion



Oregon spotted frog

*All management recommendations assume that operators and land managers are following all applicable BMPs, laws, and regulations.*

# EAST CASCADES ECOREGION

## G1 and G2 Species Habitat Management Guidelines

SCIENTIFIC NAME	COMMON NAME	HABITAT	Status
<i>Ranunculus tritermatus</i>	Dalles Mt. buttercup	Forest Edge	G2
<i>Castilleja collegiorum</i>	Collegial paintbrush	Meadows	G1
<i>Vertigo dalliana</i>	<a href="#">Horseshoe vertigo (snail)</a>	Mixed Conifer Forest	G1
<i>Ribes erythrocarpum</i>	<a href="#">Crater Lake Currant</a>	Mixed Conifer Forest	G2
<i>Vespericola depressus</i>	<a href="#">Columbia Gorge hesperian (snail)</a>	Mixed Conifer Forest	G2Q
<i>Prophysaon sp. 1</i>	Klamath tail-dropper (slug)	Mixed Conifer Forest	G2Q
<i>Juga hemphilli</i>	<a href="#">Barren juga</a>	River/Riparian	G1
<i>Juga sp. 2</i>	Blue Mountains juga (snail)	River/Riparian	G1
<i>Planorbella oregonensis</i>	<a href="#">Borax Lake ramshorn (snail)</a>	River/Riparian	G1
<i>Fluminicola sp. 2</i>	Casebeer pebblesnail	River/Riparian	G1
<i>Fluminicola sp. 3</i>	Diminutive pebblesnail	River/Riparian	G1
<i>Fluminicola sp. 4</i>	Fall Creek pebblesnail	River/Riparian	G1
<i>Fluminicola fremonti</i>	<a href="#">Fremont Pebblesnail</a>	River/Riparian	G1
<i>Helisoma newberryi</i>	<a href="#">Great Basin ramshorn</a>	River/Riparian	G1
<i>Colligyrus depressus</i>	<a href="#">Harney Basin duskysnail</a>	River/Riparian	G1
<i>Pyrgulopsis sp. 9</i>	Klamath Lake springsnail	River/Riparian	G1
<i>Fluminicola sp. 8</i>	Lost River pebblesnail	River/Riparian	G1
<i>Pyrgulopsis sp. 7</i>	Lost River springsnail	River/Riparian	G1
<i>Fluminicola sp. 10</i>	Metolius pebblesnail	River/Riparian	G1
<i>Fluminicola sp. 11</i>	Nerite pebblesnail	River/Riparian	G1
<i>Fluminicola sp. 12</i>	Odessa pebblesnail	River/Riparian	G1
<i>Fluminicola sp. 13</i>	Ouxy Spring pebblesnail	River/Riparian	G1
<i>Hesperoleucus mitrulus</i>	<a href="#">Pit roach</a>	River/Riparian	G1
<i>Fluminicola klamathensis</i>	<a href="#">Tall pebblesnail</a>	River/Riparian	G1
<i>Fluminicola sp. 15</i>	Tiger lily pebblesnail	River/Riparian	G1
<i>Fluminicola sp. 16</i>	Toothed pebblesnail	River/Riparian	G1
<i>Catostomus warnerensis</i>	<a href="#">Warner sucker</a>	River/Riparian	G1
<i>Fluminicola sp. 18</i>	Wood River pebblesnail	River/Riparian	G1
<i>Grylloblatta newberryensis</i>	<a href="#">Newberry ice crawler</a>	River/Riparian	G1
<i>Pyrgulopsis archimedis</i>	<a href="#">Archimedis springsnail</a>	River/Riparian	G1G2
<i>Fluminicola fresti</i>	<a href="#">Frest's pebblesnail</a>	River/Riparian	G1G2
<i>Vorticifex klamathensis</i>	Ramshorn (snail)	River/Riparian	G1Q
<i>Juga sp. 7</i>	<a href="#">Three-band juga (snail)</a>	River/Riparian	G1Q
<i>Fluminicola fuscus</i>	<a href="#">Columbia pebblesnail</a>	River/Riparian	G2
<i>Fluminicola sp. 20</i>	Crooked Creek pebblesnail	River/Riparian	G2
<i>Fluminicola sp. 5</i>	Klamath pebblesnail	River/Riparian	G2
<i>Rana pretiosa</i>	<a href="#">Oregon spotted frog</a>	River/Riparian	G2
<i>Cryptomastix devia</i>	<a href="#">Puget oregonian (snail)</a>	River/Riparian	G2
<i>Fluminicola multifarius</i>	<a href="#">Shasta pebblesnail</a>	River/Riparian	G2
<i>Meconella oregana</i>	<a href="#">White meconella</a>	River/Riparian	G2
<i>Deltistes luxatus</i>	<a href="#">Lost River sucker</a>	River/Riparian	G2
<i>Juga sp. 1</i>	Basalt juga (snail)	River/Riparian	G2Q
<i>Cryptomastix hendersoni</i>	<a href="#">Columbia Gorge oregonian (snail)</a>	River/Riparian	G2Q
<i>Juga acutifilosa</i>	<a href="#">Scalloped juga (snail)</a>	River/Riparian	G2Q
<i>Perideridia erythrorhiza</i>	<a href="#">Red-root yampah</a>	River/Riparian	G2

\*species links provided when available

All management recommendations assume that operators and land managers are following all applicable BMPs, laws, and regulations.



# OREGON KLAMATH MOUNTAINS ECOREGION

## G1 and G2 Species Habitat Management Guidelines

### INTRODUCTION

The Sustainable Forestry Initiative (SFI) 2022 Standards include requirements that promote and conserve Forests with Exceptional Conservation Value (FECV). This fact sheet summarizes the analysis of FECV habitat within this ecoregion and provides habitat management recommendations that would benefit species potentially found here.

### HABITAT TYPES

- River/Riparian
- Mixed conifer forest
- Special sites
- Forest edge

### RIVER/RIPARIAN MANAGEMENT

- Protect known locations
- Maintain well vegetated riparian buffers
- Plant a diversity of both hardwood and conifer trees in the riparian zone
- Retain large diameter trees near streams and rivers
- Buffer wetlands, springs, and headwater areas

### MIXED CONIFER FOREST MANAGEMENT

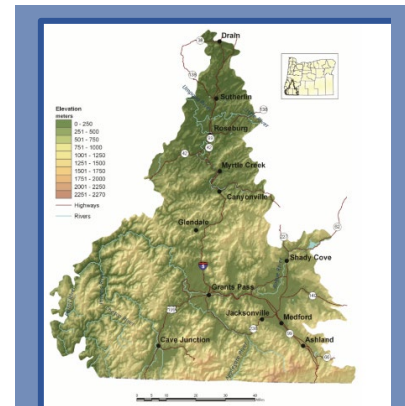
- Protect known locations
- Retain legacy trees, stumps, and logs
- Retain large diameter trees with cavities or broken tops
- Leave skips and gaps with dense shrub component
- Retain large slash into piles

### SPECIAL SITES MANAGEMENT

- Protect known locations
- Buffer special sites

### FOREST EDGE MANAGEMENT

- Protect known locations
- Buffer special sites



**Klamath Mountains Ecoregion**



**Green sturgeon**



**Kincaid's lupine**

*All management recommendations assume that operators and land managers are following all applicable BMPs, laws, and regulations.*

# OREGON KLAMATH MOUNTAINS Ecoregion

## G1 and G2 Species Habitat Management Guidelines

SCIENTIFIC NAME	COMMON NAME	HABITAT	Status
<i>Fluminicola fresti</i>	<a href="#">Frest's pebblesnail</a>	River/Riparian	G1
<i>Isocapnia mogila</i>	<a href="#">Irregular stonefly</a>	River/Riparian	G1
<i>Pomatiopsis chacei</i>	<a href="#">Marsh walker</a>	River/Riparian	G1
<i>Rhyacophila colonus</i>	<a href="#">Obrien rhyacophilan caddisfly</a>	River/Riparian	G1
<i>Hesperoleucus mitrulus</i>	<a href="#">Pit roach</a>	River/riparian	G1
<i>Pomatiopsis binneyi</i>	<a href="#">Robust walker</a>	River/Riparian	G1
<i>Chasmistes brevirostris</i>	<a href="#">Shortnose sucker</a>	River/riparian	G1
<i>Juga sp. 2</i>	<a href="#">Blue Mountains juga (snail)</a>	River/Riparian	G2
<i>Juga sp. 3</i>	<a href="#">Brown juga</a>	River/Riparian	G2
<i>Acipenser medirostris</i>	<a href="#">Green sturgeon</a>	River/riparian	G2
<i>Carex klamathensis</i>	<a href="#">Klamath sedge</a>	River/riparian	G2
<i>Rivulariella gemmipara</i>	<a href="#">Liverwort</a>	River/riparian	G2
<i>Epilobium oregonum</i>	<a href="#">Oregon willow-herb</a>	River/riparian	G2
<i>Fluminicola multifarius</i>	<a href="#">Shasta pebblesnail</a>	River/Riparian	G2
<i>Sophora leachiana</i>	<a href="#">Western necklace</a>	River/riparian	G2
<i>Gymnogyps californianus</i>	<a href="#">California condor*</a>	Mixed conifer forest	G1
<i>Calochortus coxii</i>	<a href="#">Cox's mariposa-lily</a>	Mixed conifer forest	G1
<i>Horkelia hendersonii</i>	<a href="#">Henderson's horkelia</a>	Mixed conifer forest	G1
<i>Gentiana plurisetosa</i>	<a href="#">Bristly gentian</a>	Mixed conifer forest	G2
<i>Ribes erythrocarpum</i>	<a href="#">Crater Lake currant</a>	Mixed conifer forest	G2
<i>Fritillaria gentneri</i>	<a href="#">Gentner's fritillaria</a>	Mixed conifer forest	G2
<i>Camassia howellii</i>	<a href="#">Howell's camassia</a>	Mixed conifer forest	G2
<i>Galium muricatum</i>	<a href="#">Humboldt bedstraw</a>	Mixed conifer forest	G2
<i>Prosartes parvifolia</i>	<a href="#">Siskiyou fairy bells</a>	Mixed conifer forest	G2
<i>Calochortus persistens</i>	<a href="#">Siskiyou mariposa lily</a>	Mixed conifer forest	G2
<i>Lomatium cookii</i>	<a href="#">Agate Desert lomatium</a>	Forest edge	G1
<i>Sisyrinchium hitchcockii</i>	<a href="#">Hitchcock's blue-eyed grass</a>	Forest edge	G1
<i>Dumontia oregonensis</i>	<a href="#">A water flea</a>	Forest Edge	G2
<i>Lupinus oreganus</i>	<a href="#">Kincaid's lupine</a>	Forest edge	G2
<i>vPolites mardon</i>	<a href="#">Mardon skipper</a>	Grassland/Forest Edge	G2
<i>Perideridia erythrorhiza</i>	<a href="#">Red-root yampah</a>	Forest edge	G2
<i>Meconella oregana</i>	<a href="#">White meconella</a>	Forest edge	G2
<i>Boechera rollei</i>	<a href="#">Klamath River rockcress</a>	Special site	G1
<i>Sedum moranii</i>	<a href="#">Rogue River stonecrop</a>	Special site	G2
<i>Grylloblatta siskiyouensis</i>	<a href="#">An ice crawler</a>	Alpine forest	G1
<i>Bombus franklini</i>	<a href="#">Franklin's bumblebee</a>	Alpine forest	G1
<i>Vertigo dalliana</i>	<a href="#">Horseshoe vertigo</a>	Rocky outcropping	G1

\*species links provided when available

All management recommendations assume that operators and land managers are following all applicable BMPs, laws, and regulations.

# NORTHERN BASIN & RANGE ECOREGION

## G1 and G2 Species Habitat Management Guidelines

### INTRODUCTION

The Sustainable Forestry Initiative (SFI) 2022 Standards include requirements that promote and conserve Forests with Exceptional Conservation Value (FECV). This fact sheet summarizes the analysis of FECV habitat within this ecoregion and provides habitat management recommendations that would benefit species potentially found here.

### HABITAT TYPES

- Bare ground
- Juniper Woodlands
- Mixed Conifer Forest
- River/Riparian
- Rocky Outcropping

### BARE GROUND MANAGEMENT

- Protect known locations
- Maintain areas of bare ground
- Retain or plant forage species for pollinators

### JUNIPER WOODLANDS MANAGEMENT

- Protect known locations

### MIXED CONIFER FOREST MANAGEMENT

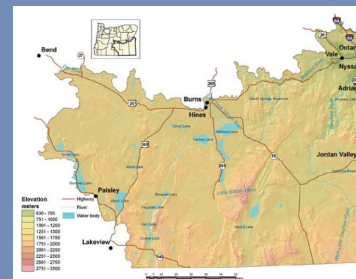
- Protect known locations
- Retain legacy trees, stumps, and logs
- Retain large diameter trees with cavities or broken tops
- Leave skips and gaps with dense shrub component
- Retain large slash into piles

### RIVER/RIPARIAN MANAGEMENT

- Protect known locations
- Maintain well vegetated riparian buffers
- Plant a diversity of both hardwood and conifer trees in the riparian zone
- Retain large diameter trees near streams and rivers
- Buffer wetlands, springs, and headwater areas

### ROCKY OUTCROPPING MANAGEMENT

- Protect known locations
- Buffer rocky outcroppings



**Northern Basin & Range  
Ecoregion**



**A miner bee**



**Grimy ivesea**

*All management recommendations assume that operators and land managers are following all applicable BMPs, laws, and regulations.*

# NORTHERN BASIN & RANGE ECOREGION

## G1 and G2 Species Habitat Management Guidelines

SCIENTIFIC NAME	COMMON NAME	HABITAT	Status
<i>Andrena winnemuccana</i>	<a href="#">A miner bee</a>	Bare ground	G1
<i>Pronotocrepis clavicornis</i>	<a href="#">Thick-antennaed plant bug</a>	Bare ground	G2
<i>Lomatium bentonitum</i>	<a href="#">Bentonite biscuitroot</a>	Juniper Woodlands	G1G2
<i>Eriogonum cusickii</i>	<a href="#">Cusick's eriogonum</a>	Mixed Conifer Forest	G2
<i>Allium tribracteatum</i>	<a href="#">Three-leaved onion</a>	Mixed Conifer Forest	G2
<i>Taylorconcha insperata</i>	<a href="#">A freshwater snail</a>	River/Riparian	G1
<i>Siphateles boraxobius</i>	<a href="#">Borax Lake chub</a>	River/Riparian	G1
<i>Planorbella oregonensis</i>	<a href="#">Borax Lake ramshorn (snail)</a>	River/Riparian	G1
<i>Helisoma newberryi</i>	<a href="#">Great Basin ramshorn</a>	River/Riparian	G1
<i>Colligyus depressus</i>	<a href="#">Harney Basin dusksnail</a>	River/Riparian	G1
<i>Petrophysa sp. 1</i>	<a href="#">Hotspring physa (snail)</a>	River/Riparian	G1
<i>Fluminicola sp. 9</i>	<a href="#">Malheur pebblesnail</a>	River/Riparian	G1
<i>Pyrgulopsis fresti</i>	<a href="#">Owyhee hot springsnail</a>	River/Riparian	G1
<i>Pyrgulopsis owyheensis</i>	<a href="#">A springsnail</a>	River/Riparian	G1G2
<i>Pyrgulopsis intermedia</i>	<a href="#">Crooked Creek springsnail</a>	River/Riparian	G1G2
<i>Dumontia oregonensis</i>	<a href="#">A water flea</a>	River/Riparian	G1G3
<i>Siphateles alvordensis</i>	<a href="#">Alvord chub</a>	River/Riparian	G2
<i>Acupalpus punctulatus</i>	<a href="#">Marsh ground beetle</a>	River/Riparian	G2
<i>Fisherola nuttalli</i>	<a href="#">Shortface lanx (=Giant Columbia River limpet)</a>	River/Riparian	G2
<i>Ivesia rhypara</i>	<a href="#">Grimy ivesia</a>	Rocky Outcropping	G2

*\*species links provided when available*

*All management recommendations assume that operators and land managers are following all applicable BMPs, laws, and regulations.*



# WEST CASCADES ECOREGION

## G1 and G2 Species Habitat Management Guidelines

### INTRODUCTION

The Sustainable Forestry Initiative (SFI) 2022 Standards include requirements that promote and conserve Forests with Exceptional Conservation Value (FECV). This fact sheet summarizes the analysis of FECV habitat within this ecoregion and provides habitat management recommendations that would benefit species potentially found here.

### HABITAT TYPES

- Alpine Forest
- Forest Edge
- Mixed Conifer Forest
- Oak Woodlands
- River/Riparian
- Rocky Outcropping

### MIXED CONIFER FOREST MANAGEMENT

- Protect known locations
- Retain legacy trees, stumps, and logs
- Retain large diameter trees with cavities or broken tops
- Leave skips and gaps with dense shrub component
- Retain large slash into piles

### OAK WOODLANDS MANAGEMENT

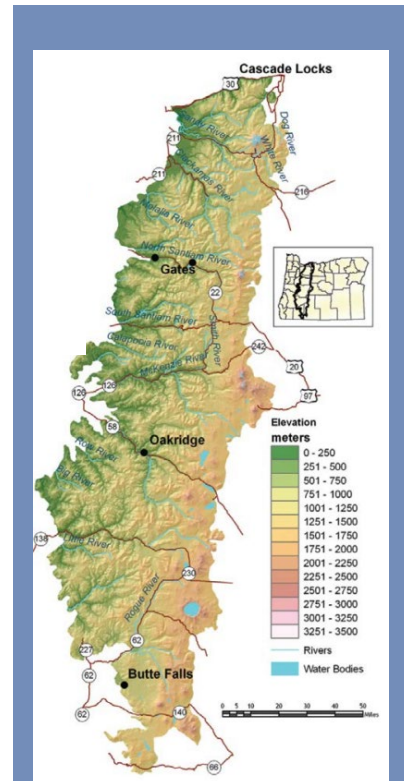
- Protect known locations
- Retain oak woodland habitat

### RIVER/RIPARIAN MANAGEMENT

- Protect known locations
- Maintain well vegetated riparian buffers
- Plant a diversity of both hardwood and conifer trees in the riparian zone
- Retain large diameter trees near streams and rivers
- Buffer wetlands, springs, and headwater areas

### SPECIAL SITE (ROCKY OUTCROPPING, FOREST EDGE, ALPINE FOREST) MANAGEMENT

- Protect known locations
- Buffer special sites
- Provide forage species for pollinators



West Cascades Ecoregion



Kincaid's lupine

*All management recommendations assume that operators and land managers are following all applicable BMPs, laws, and regulations.*

# WEST CASCADES ECOREGION

## G1 and G2 Species Habitat Management Guidelines

SCIENTIFIC NAME	COMMON NAME	HABITAT	Status
<i>Bombus franklini</i>	<a href="#">Franklin's bumblebee</a>	Alpine Forest	G1
<i>Perideridia erythrorhiza</i>	<a href="#">Red-root yampah</a>	Forest Edge	G2
<i>Gymnogyps californianus</i>	<a href="#">California condor</a>	Mixed Conifer Forest	G1
<i>Boechera horizontalis</i>	<a href="#">Crater Lake rockcress</a>	Mixed Conifer Forest	G1
<i>Fritillaria gentneri</i>	<a href="#">Gentner's fritillaria</a>	Mixed Conifer Forest	G2
<i>Lupinus oregonus</i>	<a href="#">Kincaid's lupine</a>	Mixed Conifer Forest	G2
<i>Polites mardon</i>	<a href="#">Mardon skipper (butterfly)</a>	Mixed Conifer Forest	G2
<i>Kalmiopsis fragrans</i>	North Umpqua kalmiopsis	Mixed Conifer Forest	G2
<i>Sisyrinchium sarmentosum</i>	<a href="#">Pale blue-eyed grass</a>	Mixed Conifer Forest	G2
<i>Cryptomastix devia</i>	<a href="#">Puget oregonian (snail)</a>	Mixed Conifer Forest	G2
<i>Ribes erythrocarpum</i>	<a href="#">Crater Lake Currant</a>	Mixed Conifer Forest	G2
<i>Prophysaon sp. 1</i>	Klamath tail-dropper (slug)	Mixed Conifer Forest	G2Q
<i>Helminthoglypta hertleini</i>	<a href="#">Oregon shoulderband (snail)</a>	Mixed Conifer Forest	G2Q
<i>Delphinium pavonaceum</i>	<a href="#">Peacock larkspur</a>	Oak Woodlands	G1Q
<i>Neothremma prolata</i>	<a href="#">A Caddisfly</a>	River/Riparian	G1
<i>Juga newberryi</i>	<a href="#">A freshwater snail</a>	River/Riparian	G1
<i>Juga hemphilli</i>	<a href="#">Barren juga</a>	River/Riparian	G1
<i>Isoperla umpqua</i>	<a href="#">Muir Creek stonefly</a>	River/Riparian	G1
<i>Fluminicola sp. 21</i>	Pinhead pebblesnail	River/Riparian	G1
<i>Allomyia scotti</i>	<a href="#">Scott's apatanian caddisfly</a>	River/Riparian	G1
<i>Fluminicola sp. 15</i>	Tiger lily pebblesnail	River/Riparian	G1
<i>Nanonemoura wahkeena</i>	<a href="#">Wahkeena Falls flightless stonefly</a>	River/Riparian	G1
<i>Farula constricta</i>	<a href="#">A caddisfly</a>	River/Riparian	G1G2
<i>Juga sp. 3</i>	Brown juga (snail)	River/Riparian	G1Q
<i>Physella hordacea</i>	<a href="#">Grain physa (snail)</a>	River/Riparian	G1Q
<i>Vorticifex neritoides</i>	<a href="#">Nerite ramshorn (snail)</a>	River/Riparian	G1Q
<i>Neothremma andersoni</i>	<a href="#">Columbia Gorge caddisfly</a>	River/Riparian	G2
<i>Fluminicola fuscus</i>	<a href="#">Columbia pebblesnail</a>	River/Riparian	G2
<i>Agrostis howellii</i>	<a href="#">Howell's bentgrass</a>	River/Riparian	G2
<i>Rivulariella gemmipara</i>	<a href="#">Liverwort</a>	River/Riparian	G2
<i>Rana pretiosa</i>	<a href="#">Oregon spotted frog</a>	River/Riparian	G2
<i>Fluminicola multifarius</i>	<a href="#">Shasta pebblesnail</a>	River/Riparian	G2
<i>Meconella oregana</i>	<a href="#">White meconella</a>	River/Riparian	G2
<i>Anastrophyllum sphenoloboides</i>	<a href="#">Liverwort</a>	River/Riparian	G2
<i>Lathyrus holochlorus</i>	<a href="#">Thin-leaved peavine</a>	River/Riparian	G2
<i>Cryptomastix hendersoni</i>	<a href="#">Columbia Gorge oregonian (snail)</a>	River/Riparian	G2Q
<i>Eriogonum villosissimum</i>	<a href="#">Acker Rock wild buckwheat</a>	Rocky Outcropping	G1
<i>Erigeron howellii</i>	<a href="#">Howell's daisy</a>	Rocky Outcropping	G2
<i>Sullivantia oregana</i>	<a href="#">Oregon sullivantia</a>	Rocky Outcropping	G2

\*species links provided when available

All management recommendations assume that operators and land managers are following all applicable BMPs, laws, and regulations.



# WILLAMETTE VALLEY ECOREGION

## G1 and G2 Species Habitat Management Guidelines

### INTRODUCTION

The Sustainable Forestry Initiative (SFI) 2022 Standards include requirements that promote and conserve Forests with Exceptional Conservation Value (FECV). This fact sheet summarizes the analysis of FECV habitat within this ecoregion and provides habitat management recommendations that would benefit species potentially found here.

### HABITAT TYPES

- Forest Edge
- Mixed Conifer Forest
- River/Riparian

### FOREST EDGE MANAGEMENT

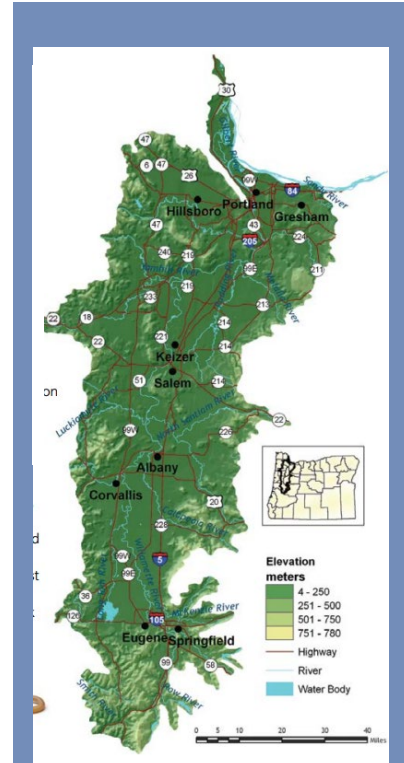
- Protect known locations
- Buffer special sites

### MIXED CONIFER FOREST MANAGEMENT

- Protect known locations
- Retain legacy trees, stumps, and logs
- Retain large diameter trees with cavities or broken tops
- Leave skips and gaps with dense shrub component
- Retain large slash into piles

### RIVER/RIPARIAN MANAGEMENT

- Protect known locations
- Maintain well vegetated riparian buffers
- Plant a diversity of both hardwood and conifer trees in the riparian zone
- Retain large diameter trees near streams and rivers
- Buffer wetlands, springs, and headwater areas



**Willamette Valley Ecoregion**



**Keeled jumping slug**

*All management recommendations assume that operators and land managers are following all applicable BMPs, laws, and regulations.*

# WILLAMETTE VALLEY ECOREGION

## G1 and G2 Species Habitat Management Guidelines

SCIENTIFIC NAME	COMMON NAME	HABITAT	Status
<i>Lupinus oregonus</i>	<a href="#">Kincaid's lupine</a>	Forest Edge	G2
<i>Gymnogyps californianus</i>	<a href="#">California condor</a>	Mixed Conifer Forest	G1
<i>Driloleirus macelfreshi</i>	<a href="#">Oregon giant earthworm</a>	Mixed Conifer Forest	G1
<i>Sisyrinchium hitchcockii</i>	<a href="#">Hitchcock's blue-eyed grass</a>	Mixed Conifer Forest	G1G2
<i>Hemphillia burringtoni</i>	<a href="#">Keeled jumping-slug</a>	Mixed Conifer Forest	G1G2
<i>Cryptomastix devia</i>	<a href="#">Puget oregonian (snail)</a>	Mixed Conifer Forest	G2
<i>Delphinium leucophaeum</i>	White rock larkspur	Mixed Conifer Forest	G2
<i>Ribes erythrocarpum</i>	<a href="#">Crater Lake Currant</a>	Mixed Conifer Forest	G2
<i>Vespericola sp. 2</i>	Bald hesperian (snail)	River/Riparian	G1
<i>Sphaerocarpos hians</i>	<a href="#">Liverwort</a>	River/Riparian	G1
<i>Capnia kersti</i>	<a href="#">A stonefly</a>	River/Riparian	G1G2
<i>Pristiloma pilsbryi</i>	<a href="#">Crowned tightcoil (snail)</a>	River/Riparian	G1G2
<i>Dumontia oregonensis</i>	<a href="#">A water flea</a>	River/Riparian	G1G3
<i>Juga sp. 3</i>	<a href="#">Brown juga (snail)</a>	River/Riparian	G1Q
<i>Physella hordacea</i>	<a href="#">Grain physa (snail)</a>	River/Riparian	G1Q
<i>Vorticifex neritoides</i>	<a href="#">Nerite ramshorn (snail)</a>	River/Riparian	G1Q
<i>Vespericola sp. 31</i>	Yamhill hesperian (snail)	River/Riparian	G1Q
<i>Fluminicola fuscus</i>	<a href="#">Columbia pebblesnail</a>	River/Riparian	G2
<i>Fluminicola virens</i>	<a href="#">Olympia pebblesnail</a>	River/Riparian	G2
<i>Sullivantia oregana</i>	<a href="#">Oregon sullivantia</a>	River/Riparian	G2
<i>Fisherola nuttalli</i>	<a href="#">Shortface lanx (=Giant Columbia River limpet)</a>	River/Riparian	G2
<i>Ramellogammarus similimanus</i>	<a href="#">Stumptown scud</a>	River/Riparian	G2
<i>Lathyrus holochlorus</i>	<a href="#">Thin-leaved peavine</a>	River/Riparian	G2

\*species links provided when available