

Mark Ashton
Consents Manager
Energy Consents Unit
Scottish Government
5 Atlantic Quay
150 Broomielaw
Glasgow
G2 8LU

Date:
04/05/2021

Contact: Alison Daugherty
E-mail: Alison.daugherty@vattenfall.com

Phone: 01434 611300

Clashindarroch II Wind Farm (ECU Reference: ECU00002002)

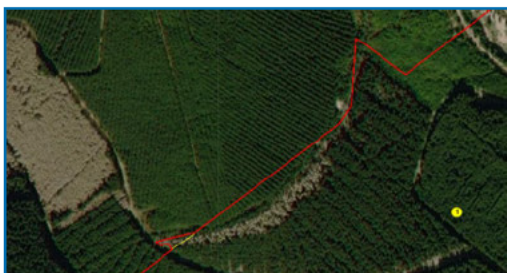
Dear Mark,

I'm writing to confirm our recent discussion regarding the minor drafting error within the Section 36 submission documents for Clashindarroch II Wind Farm.

When the application was submitted in December 2019 the application included Application Boundary figures as follows:

- Application Boundary Overview Figure 1
- Application Boundary Part A Figure 2.1
- Application Boundary Part B Figure 2.2

These figures show a red line Application boundary. Due to a drafting error this red line deviates very slightly from the forest coupe edges in two places, and therefore excludes two very small areas of forestry totaling 0.17ha, as shown below.



The yellow line illustrates the submitted Application boundary; the proposed amended boundary includes the edge of the forest coupe. Wind turbine 1 is shown as a yellow dot for location reference.



The yellow line illustrates the submitted Application boundary; the proposed amended boundary includes the edge of the forest coupe. Wind turbine 12 is shown as a yellow dot for location reference.

The purpose of this correspondence is to seek agreement to substitute the submitted application boundary figures with ones which include the omitted small areas of forestry within the red line. Please find the following revised figures attached for your reference:

- Application Boundary Overview Figure 1 (amended)
- Application Boundary Part A Figure 2.1 (amended)
- Application Boundary Part B Figure 2.2 (amended)

We do not consider that the amended application drawings require to be advertised or consulted upon under the Electricity (Applications for Consent) Regulations 1990 as the changes are not material.

The omitted areas were fully considered and assessed throughout the Environmental Impact Assessment (EIA) process and have been reported on in the submitted EIA Report as such it is not considered that the conclusions of the EIA would be affected by the proposed minor amendments to the boundary. However, all figures within Volume 3 Figures and Volume 4 Technical Appendices of the EIA have been reviewed to assess the relevance of the red line Application boundary to either the survey area or any mitigation proposed as part of the EIA.

| EIA Topic | Survey Area |
|----------------------------------|--|
| Landscape and Visual Impact | Application boundary has no impact on assessment. Study area based on a 40km zone around outermost turbines. |
| Ornithology | Application boundary has no impact on assessment. Survey area covers the full extent of the development area based on turbine location. Protection measures are based upon buffers around sensitive locations (eg nest sites). |
| Ecology | Application boundary line has no impact on assessment. Survey area covers the full extent of the development area based on turbine location. Protection measures are based upon buffers around sensitive locations (eg den sites). |
| Cultural Heritage | Application boundary has no impact on assessment. Outer Survey area based on 5km buffer around turbine locations. Inner Survey area based on boundary line but any assets within the areas in question would have been identified. |
| Hydrology, Hydrogeology and Peat | Application boundary has no impact on assessment. Study area included all infrastructure locations, as well as at least a 5km buffer of this to assess local water use and quality. |
| Carbon | Application boundary has no impact on assessment. |
| Highways, Traffic and Transport | Application boundary has no impact on assessment. Study area is defined as the public road network in the vicinity of the proposed development. |
| Noise | Application boundary has no impact on assessment. Study area identifies any noise sensitive receptors within 5km of the nearest turbine. |
| Socio-economics | Application boundary has no impact on assessment. Study area comprises a Wider Study Area (on a regional basis) and an Inner Study Area which is based on a 5km buffer from the site |

| | |
|----------|---|
| | boundary, however high sensitivity receptors beyond that 5km buffer were considered. |
| Forestry | Application boundary has no impact on assessment. Study area included the whole forest coupe areas within the forest study area. |

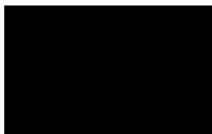
For the purposes of clarity, we also propose to substitute the following figures of the EIA Report with amended versions (as attached) which include the amended red line boundary :

- Figure 1.2 Application Boundary (within Volume 3a – Figures)
- Figure 3.2.6 Wind Farm Fell Plan (within Volume 4a - Technical Appendix 3.2)
- Figure 3.2.7 Wind Farm Restock Plan (within Volume 4a -Technical Appendix 3.2)

We don't consider that the amended EIA Report figures need to be advertised or consulted upon under the Electricity Works (Environmental Impact Assessment) (Scotland) Regulations 2017 as the changes are not substantive and the areas were considered within the assessment.

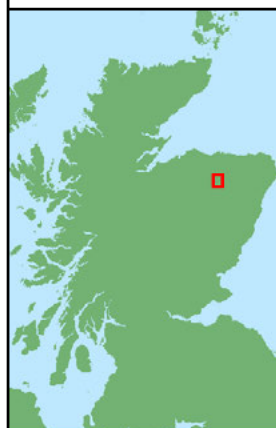
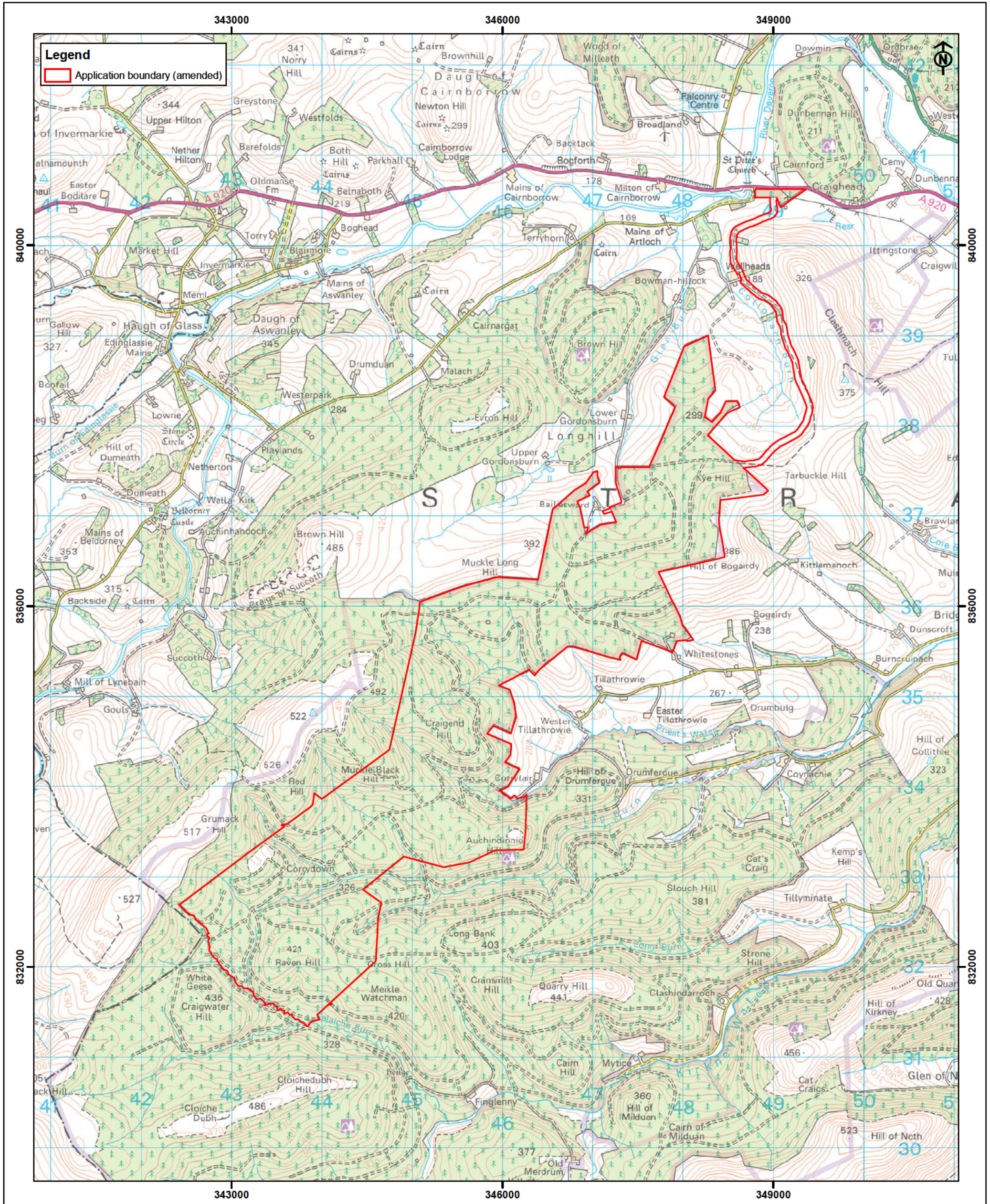
I would be grateful if you could please confirm that the substitutions as set out in this correspondence are acceptable.

Your sincerely,



Alison Daugherty

- Enc:
- Application Boundary Overview Figure 1 (amended)
 - Application Boundary Part A Figure 2.1 (amended)
 - Application Boundary Part B Figure 2.2 (amended)
 - Figure 1.2 Application Boundary (amended)
 - Figure 3.2.6 Wind Farm Fell Plan (amended)
 - Figure 3.2.7 Wind Farm Restock Plan (amended)



VATTENFALL

Vattenfall Wind Power Ltd, St Andrews House, Haugh Lane, Hexham, England, NE48 3QQ. Tel +44 (0) 1434 611300

This drawing/map has been produced to the latest known information at the time of issue. Please consult with the Vattenfall GIS team to ensure the content is still current before using the information contained on this map.

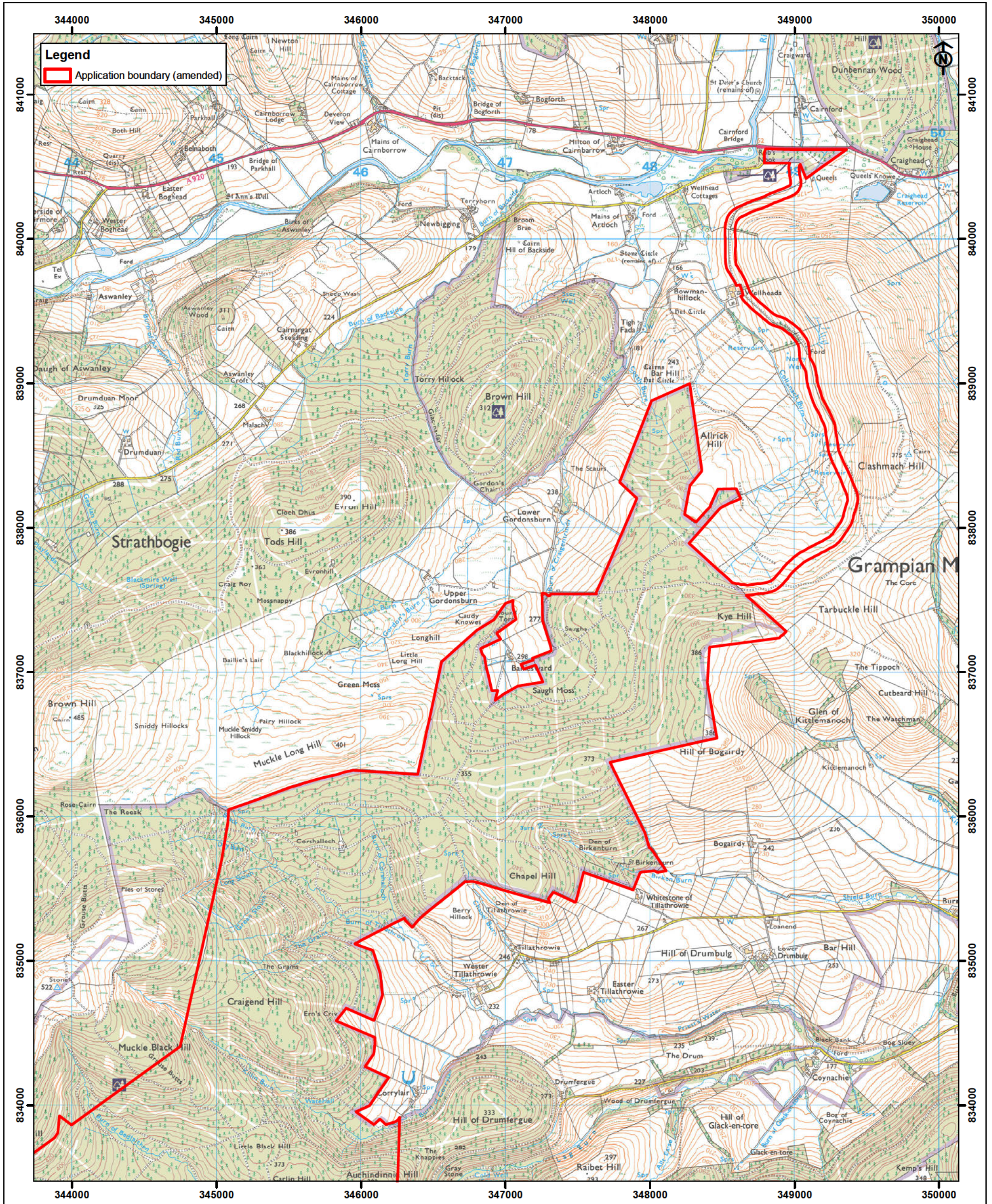
| Rev | Date | Drawn By | Checked By | Comment |
|-----|----------|----------|------------|-------------|
| A | 26/04/21 | LHOP | RASM | First Issue |

0 1 2 km

© Crown copyright, All rights reserved.
2021 Licence number 0100031673
© Vattenfall Wind Power Ltd 2021.

Clashindarroch II Wind Farm
Figure 1
Application Boundary Overview (amended)

| | | | |
|-------------------|-----------------------|------------------------------|--------------------|
| Datum | OSGB 1936 | Confidentiality Class | C1 - Public |
| Projection | British National Grid | Drg No | CLON-1AG-700-015 |
| Plot | A3 | Rev | A |
| Scale | 1:40,000 | Layout | N/A |
| | | | Figure 1 |



VATTENFALL

Vattenfall Wind Power Ltd, St Andrews House, Haugh Lane, Hexham, England, NE48 3QQ. Tel +44 (0) 1434 611300

This drawing/map has been produced to the latest known information at the time of issue. Please consult with the Vattenfall GIS team to ensure the content is still current before using the information contained on this map.

| Rev | Date | Drawn By | Checked By | Comment |
|-----|----------|----------|------------|-------------|
| A | 26/04/21 | LHOP | RASM | First Issue |

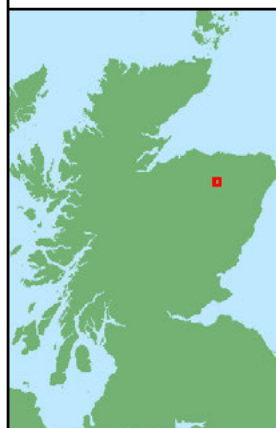
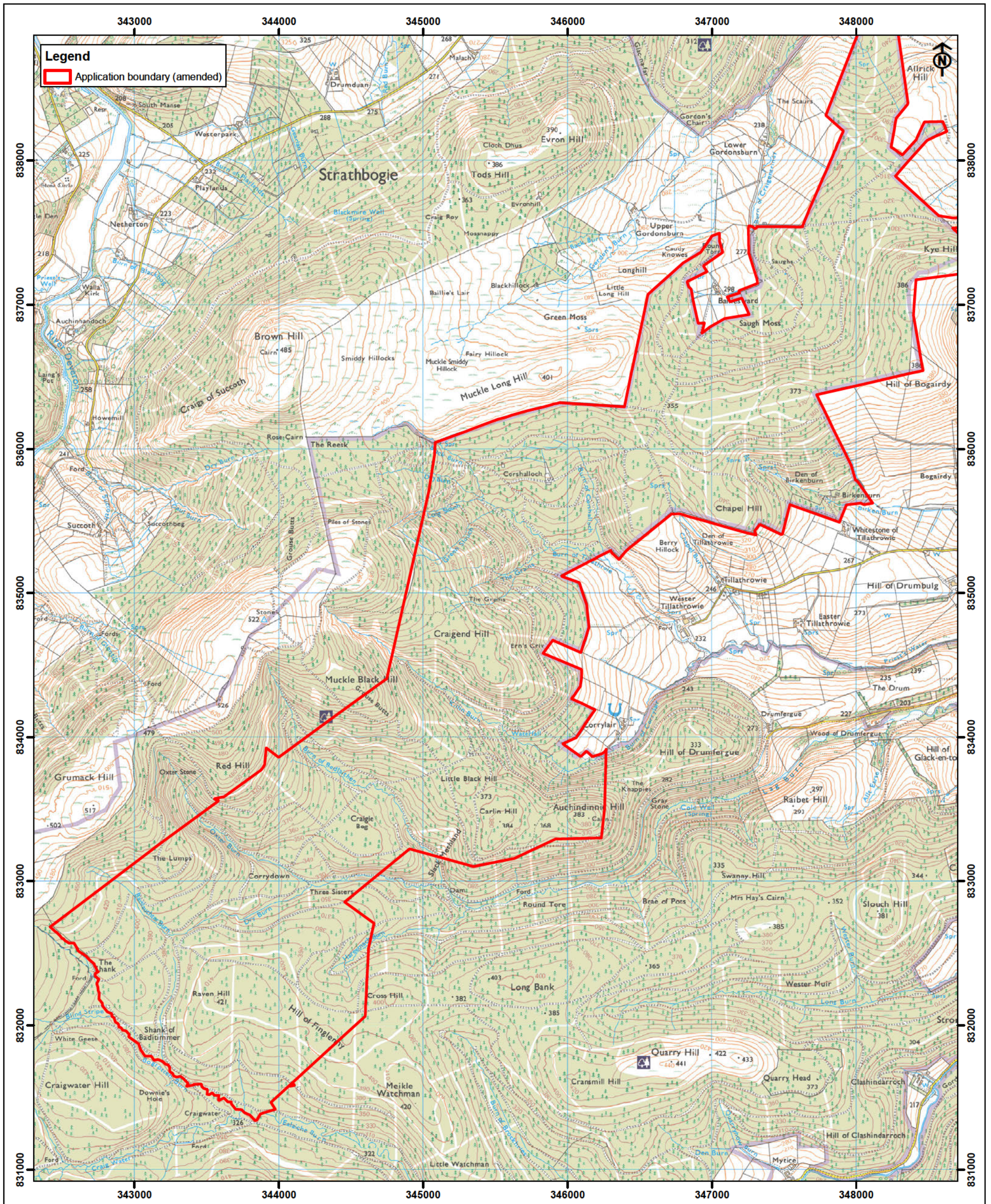
0 0.2 0.4 0.6 0.8 km


© Crown copyright. All rights reserved.
2021 Licence number 0100031673
© Vattenfall Wind Power Ltd 2021.

Clashindarroch II Wind Farm
Figure 2.1
Application Boundary Part A (amended)

| | | | |
|------------|-----------------------|-----------------------|------------------|
| Datum | OSGB 1936 | Confidentiality Class | C1 - Public |
| Projection | British National Grid | Drg No | CLON-1AG-700-016 |
| Plot | A3 | Rev | A |
| Scale | 1:25,000 | Layout | N/A |

Figure 2.1



VATTENFALL 

Vattenfall Wind Power Ltd, St Andrews House, Haugh Lane, Hexham, England, NE48 3QQ. Tel +44 (0) 1434 611300

This drawing/map has been produced to the latest known information at the time of issue. Please consult with the Vattenfall GIS team to ensure the content is still current before using the information contained on this map.

| Rev | Date | Drawn By | Checked By | Comment |
|-----|----------|----------|------------|-------------|
| A | 26/04/21 | LHOP | RASM | First Issue |

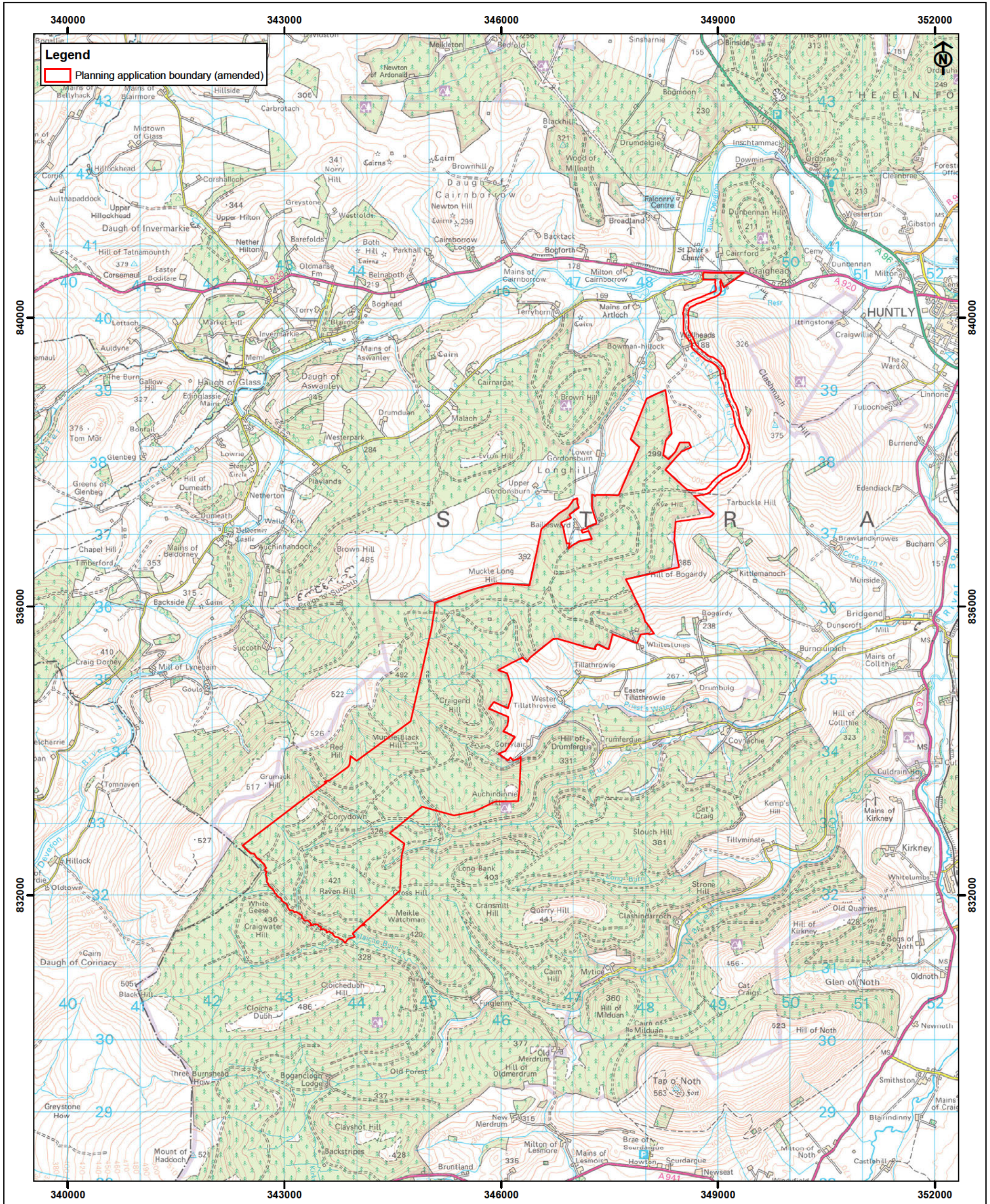
0 0.2 0.4 0.6 0.8 km

© Crown copyright, All rights reserved.
2021 Licence number 0100031673
© Vattenfall Wind Power Ltd 2021.

Clashindarroch II Wind Farm
Figure 2.2
Application Boundary Part B (amended)

| | | | |
|-------------------|-----------------------|------------------------------|------------------|
| Datum | OSGB 1936 | Confidentiality Class | C1 - Public |
| Projection | British National Grid | Drg No | CLON-1AG-700-017 |
| Plot | A3 | Rev | A |
| Scale | 1:25,000 | Layout | N/A |

Figure 2.1



VATTENFALL

Vattenfall Wind Power Ltd, St Andrews House, Haugh Lane, Hexham, England, NE48 3QQ. Tel +44 (0) 1434 611300

This drawing/map has been produced to the latest known information at the time of issue. Please consult with the Vattenfall GIS team to ensure the content is still current before using the information contained on this map.

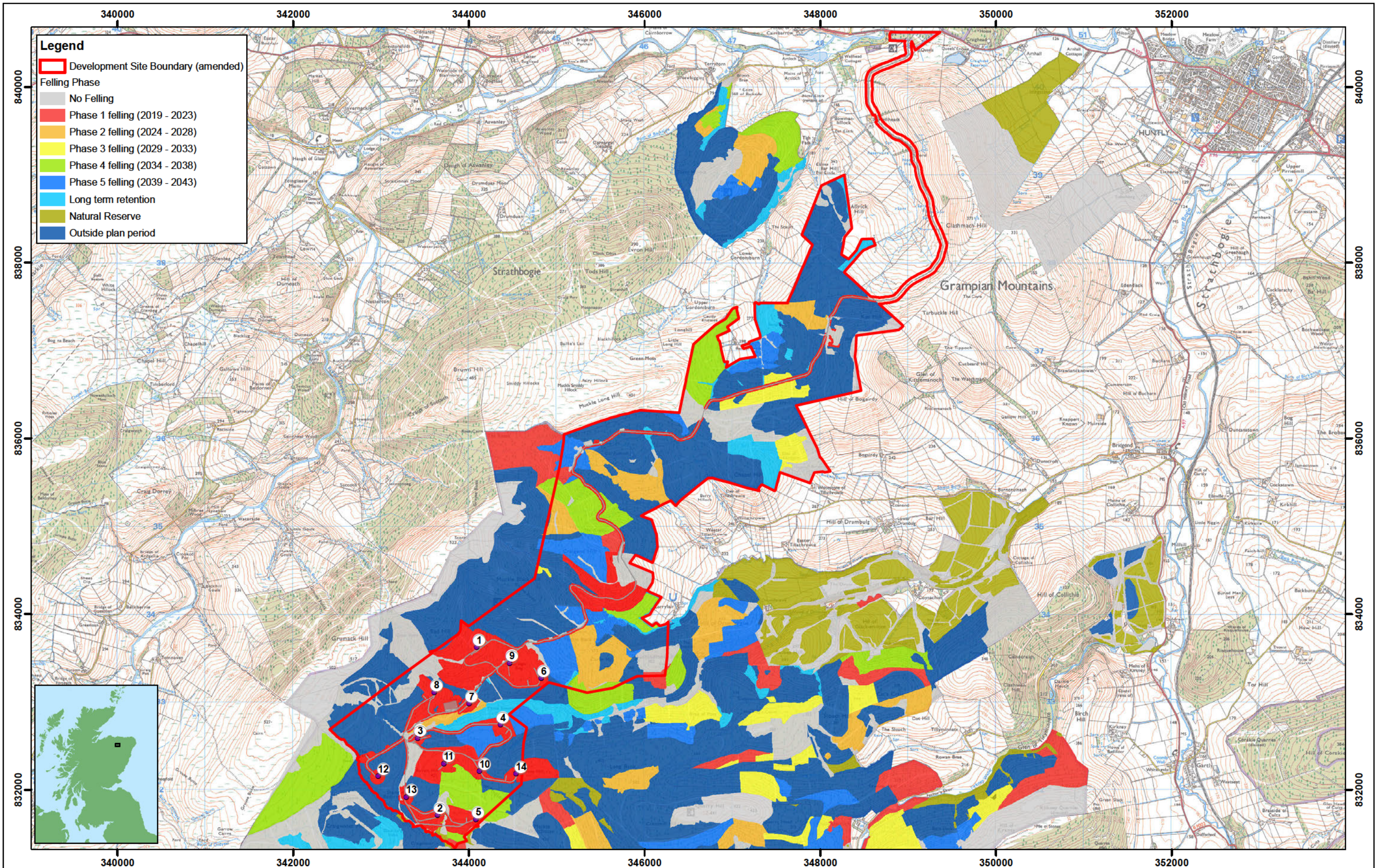
| Rev | Date | Drawn By | Checked By | Comment |
|-----|----------|----------|------------|-------------|
| A | 19/04/21 | FEBA | LHOP | First Issue |

0 1 2 km

© Crown copyright, All rights reserved.
2021 Licence number 0100031673
© Vattenfall Wind Power Ltd 2021.

Clashindarroch II Wind Farm
Figure 1.2 Application Boundary (amended)

| | | | |
|-------------------|-----------------------|------------------------------|------------------|
| Datum | OSGB 1936 | Confidentiality Class | C1 - Public |
| Projection | British National Grid | Drg No | CLON-1AG-700-012 |
| Plot | A3 | Rev | A |
| Scale | 1:50,000 | Layout | N/A |



This drawing/map has been produced to the latest known information at the time of issue. Please consult with the Vattenfall GIS team to ensure the content is still current before using the information contained on this map.



Vattenfall Wind Power Ltd, St Andrews House, Haugh Lane, Hexham, England, NE46 3QQ. Tel +44 (0) 1434 611300

| Rev | Date | Drawn By | Checked By | Comment |
|-----|----------|----------|------------|-------------|
| A | 23/04/21 | LHOP | RASM | First Issue |

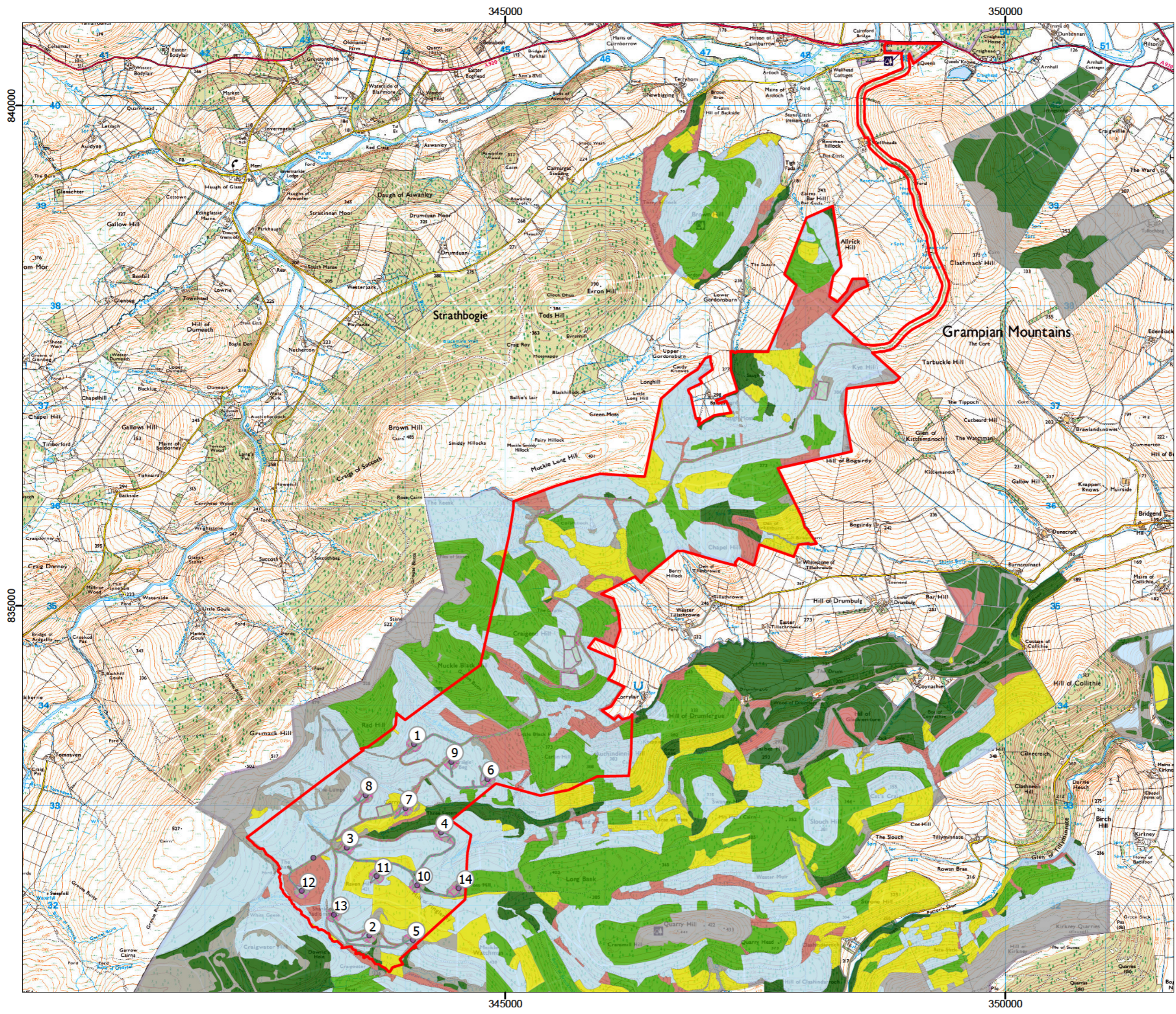
| | |
|------------|-----------------------|
| Datum | OSGB 1936 |
| Projection | British National Grid |
| Plot | A3 |
| Scale | 1:40,000 |

0 0.2 0.4 0.6 km
 © Crown copyright. All rights reserved.
 2021 Licence number 0100031673
 © Vattenfall Wind Power Ltd 2021.

CLASHINDARROCH II WIND FARM
 Wind Farm Felling Plan (amended)
 Figure 3.2.6

| | | |
|-----------------------|------------------|--------------|
| Confidentiality Class | | C1 - Public |
| Drg No | CLON-1AG-700-013 | |
| Rev | A | FIGURE 3.2.6 |
| Layout | NA | |

Ref: CLON_OWTG_WTG_LCLON046_FT_v02_2002251hop27700, CLON_BDSB_SiBdry_v08_210316rasm27700, CLON_OINF_CMP_PN_v01_1608191hop27700, CLON_OROA_SRD_LN_v02_1908271hop27700, CLON_OMSC_TreesTFell_v03_210316rasm27700, CLON_EGTR_TFell_v03_2104231hop27700



Legend

- Development Site Boundary
- Wind Farm Restock**
- Sitka spruce
- Sitka spruce/ Mixed conifer
- Mixed conifer
- Mixed broadleaves
- Mixed woodland
- Open ground
- Wind Farm Open ground

VATTENFALL

SLR

4/5 LOCHS DE VIEW
EDINBURGH PARK
EDINBURGH
EH12 9DH
T: +44 (0)131 335 6830
www.slrconsulting.com

1:35,000 @ A3
© Crown Copyright 2019. All rights reserved.
Ordnance Survey Licence 0100031673.

0 0.25 0.5 1 Km

Clashindarroch II Wind Farm
Environmental Impact Assessment
Wind Farm Restocking Plan

Figure 3.2.7

| | |
|-----------------------|-----------------|
| Date: Oct 2019 | Prepared By: TW |
| Ref: Clashindarroch 2 | |