

Benthic Cover – Hard Corals – Acropora – Leptoria

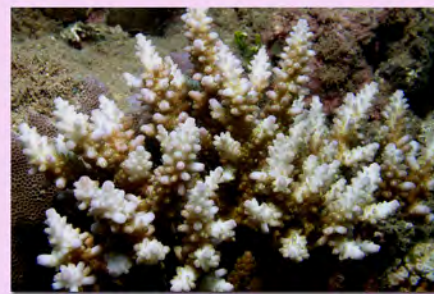
Acropora



*Acropora muricata*



*Acropora digitifera*

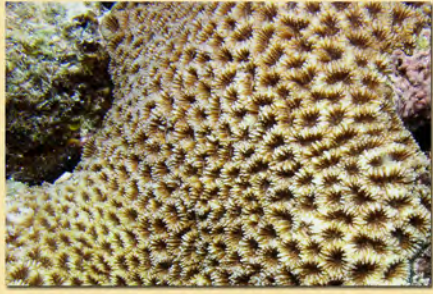


*Acropora cerealis*



*Acropora accuminata*

Favia



*Favia pallida*



*Favia fava*

Fungia



*Fungia fungites*



*Fungia fungites*

Goniastrea



*Goniastrea edwardsi*



*Goniastrea retiformis*

Goniopora



*Goniopora fruticosa*

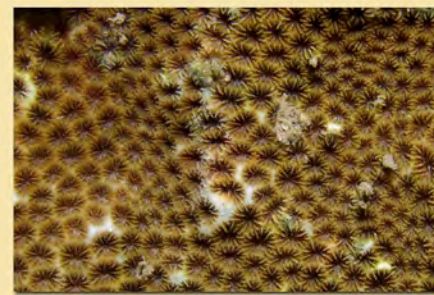


*Goniopora fruticosa*

Leptastrea



*Leptastrea purpurea*



*Leptastrea purpurea*

Leptoria



*Leptoria phyrgia*



*Leptoria phyrgia*

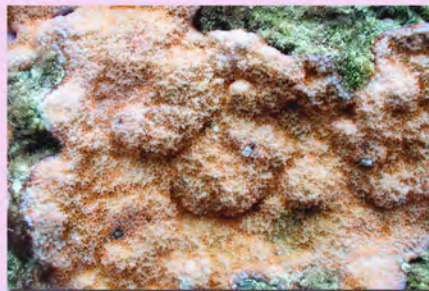
Montipora



*Montipora foveolata*



*Montipora venosa*



*Montipora floweri*



*Montipora verrucosa*

Pavona



*Pavona decussata*



*Pavona cactus*



*Pavona divaricata*

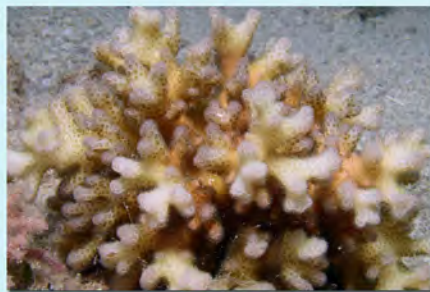


*Pavona decussata*

Pocillopora



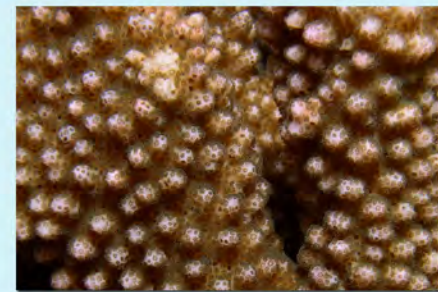
*Pocillopora damicornis*



*Pocillopora damicornis*

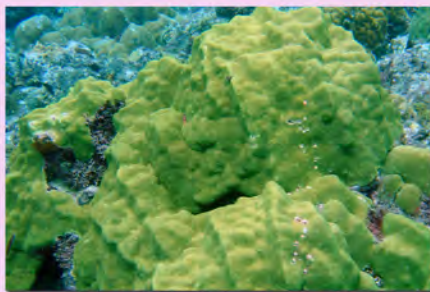


*Pocillopora elegans*



*Pocillopora eydouxi*

Porites



*Porites lutea*



*Porites cylindrica*



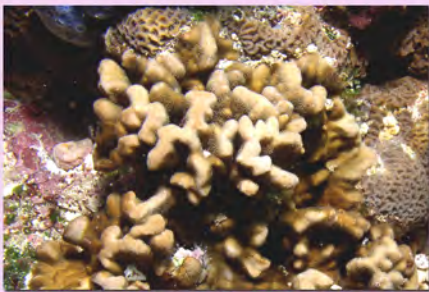
*Porites rus*



*Porites australiensis*

Benthic Cover - Corals - Psammocora - Soft Corals - Blue Coral

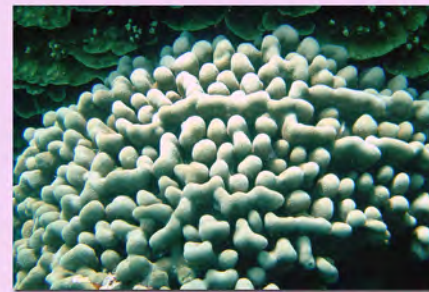
Psammocora



*Psammocora contigua*



*Psammocora stellata*



*Psammocora digitata*



*Psammocora digitata*

Soft Corals



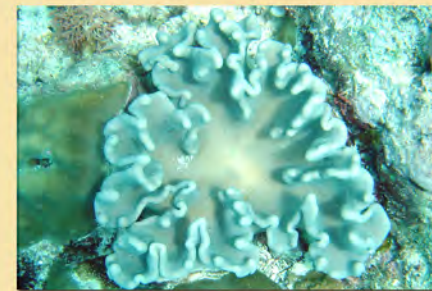
*Sinularia sp.*



*Sinularia sp.*



*Sarcophyton sp.*



*Lobophytum sp.*

Fine Corals



*Millepora sp.*



*Millepora platyphyllia*



*Millepora sp.*



*Millepora platyphyllia*

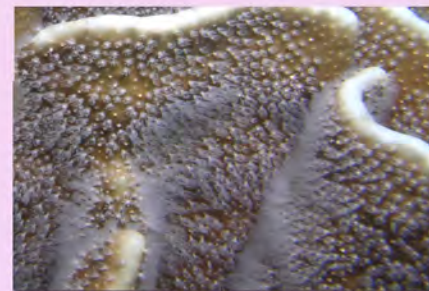
Blue Coral



*Heliopora coerulea*



*Heliopora coerulea*



*Heliopora coerulea*

