

SWEDISH • AUDIO • PASSION  




# CAR AUDIO

PRODUCT CATALOGUE

**Q1-Q2**

**2023**



## SWEDISH AUDIO PASSION

The first DLS product ever made was a state-of-the-art, all-frequencies police scanner. The exceptional quality and the high performance set a new standard, not by accident but by choice.

Today, more than four decades later, the three-letter logo still represents the same outstanding quality and performance, no matter if it is a plug-and-play speaker system for a BMW or a beautiful and minimalistic wall mounted home theatre system.

By choosing DLS you are letting your passion guide you, you are choosing sound quality and high performance, you are choosing audio excellence.

Designs, specifications and prices subject to change without prior notice. DLS reserves for possible typos, factual or numeric errors.

INFO

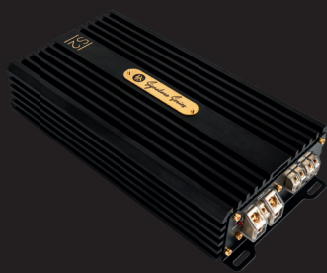


## AMPLIFIERS



### S1

Mono amplifier  
1x1200W @ 1 ohm  
1x800W @ 2 ohm  
1x450W @ 4 ohm  
High level input with auto start  
LP-filter variable 35-250Hz  
Subsonic filter variable  
30Hz /ON / OFF  
Bass boost @ 45Hz 0 - +6dB  
Size 54x129x370mm



### S2

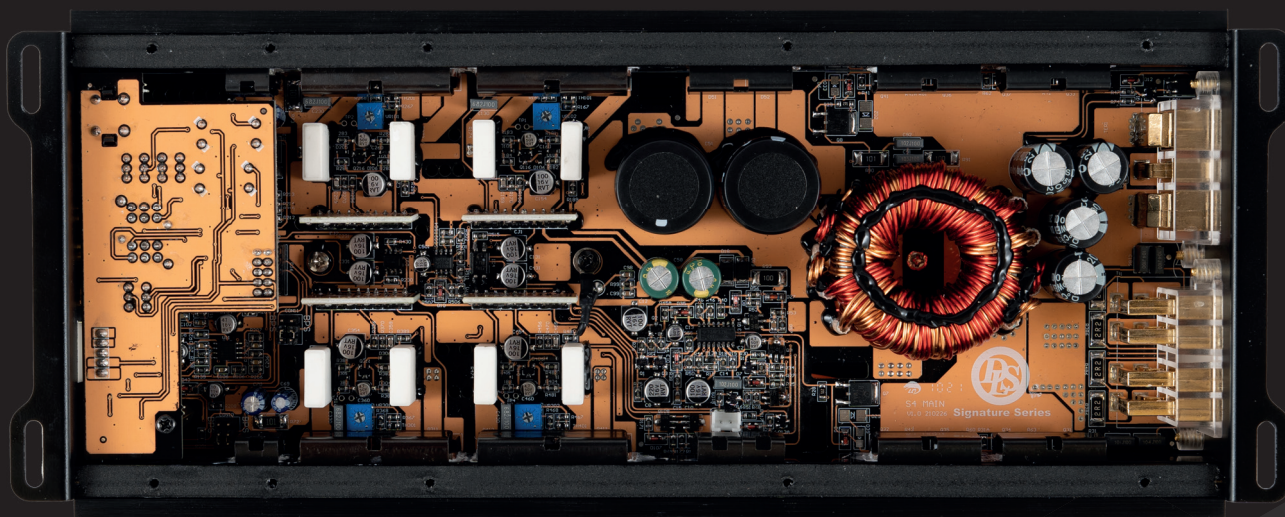
2-channel amplifier  
2x180W @ 2 ohm  
2x110W @ 4 ohm  
1x360W @ 4 ohm bridged  
High level input with auto start  
LP-filter variable 50-500Hz  
HP-filter variable 50-500Hz  
Bass boost @ 45Hz 0 - +6dB  
Size 54x129x260mm



### S4

4-channel amplifier  
4x130W @ 2 ohm  
4x90W @ 4 ohm  
2x260W @ 4 ohm bridged  
High level input with auto start  
LP-filter variable 50-500Hz  
HP-filter variable 50-500Hz  
Size 54x129x320mm

*Rome was not built in one day, and neither was our most advanced amplifiers yet. The signature series is the result of over two years of research, development, finetuning, testing and optimizing every single component and circuit. These amplifiers are DLS perfection.*



Interior picture of the Signature S4 amplifier

# SIGNATURE



## COMPETITION GRADED SPEAKER SYSTEMS



### **SCANDCASE 3-40**

Competition class 3-way system  
165mm bass SCAND-165Wi  
75mm midrange SCAND-75  
30mm tweeter SCAND-30  
Rec. amp power: 50-200W  
Aluminum cone  
Incl. grilles, crossovers and aluminum case  
Advanced individual measurement and listening tests used to match the products in optimal pairs.



### **SCANDCASE 3**

Competition class 3-way system  
165mm bass SCAND-165Wi  
75mm midrange SCAND-75  
30mm tweeter SCAND-30  
Rec. amp power: 50-200W  
Aluminum cone  
Incl. grilles, crossovers and aluminum case



### **ACTCASE 3**

Competition class 3-way system  
165mm bass SCAND-165Wi  
75mm midrange SCAND-75  
30mm tweeter SCAND-30  
Rec. amp power: 50-200W  
Aluminum cone  
Incl. grilles and aluminum case



### **SCANDCASE 2**

Competition class 2-way system  
165mm midrange SCAND-165  
30mm tweeter SCAND-30  
Rec. amp power: 50-200W  
Fibre glass cone  
Incl. grilles, crossovers and aluminum case



### **ACTCASE 2**

Competition class 2-way system  
165mm midrange SCAND-165  
30mm tweeter SCAND-30  
Rec. amp power: 50-200W  
Fibre glass cone  
Incl. grilles and aluminum case

# SCANDINAVIA



## COMPETITION GRADED COMPONENTS



### SCANDINAVIA 165Wi

6,5" (165mm) bass / woofer  
 3-way system  
 Rec. amp power: 50-200W  
 84,3dB sensitivity, Fs 33Hz  
 Freq. range 30-500Hz (-3dB)  
 Aluminum cone  
 Inst. depth 2,56" (65mm)  
 Incl. grilles



### SCANDINAVIA 165

6,5" (165mm) bass / midrange  
 2-way system  
 Rec. amp power: 50-200W  
 91,9dB sensitivity, Fs 61Hz  
 Freq. range 50-4500Hz (-3dB)  
 Fibre glass cone  
 Inst. depth 2,56" (65mm)  
 Incl. grilles



### SCANDINAVIA 75

3" (75mm) midrange  
 Rec. amp power: 50-200W  
 85,2dB sensitivity  
 Coated paper cone  
 Inst. depth 1,5" (38mm)  
 Incl. grilles



### SCANDINAVIA 30

1,18" (30mm) soft dome tweeter  
 Metal housing  
 Rec. amp power: 50-200W  
 92,2dB sensitivity  
 Acoustic resonance rear chamber  
 Inst. depth 0,75" (18mm)



### SCANDINAVIA X02

2-way crossover boxes  
 Use with Scandinavia 165 and  
 Scandinavia 30 for passive mode  
 4 ohm impedance  
 Crossover point (Hz) 4kHz  
 Size 45x85x145mm



### SCANDINAVIA X03

3-way crossover boxes  
 Use with Scandinavia 75 and  
 Scandinavia 30 for passive mode  
 Use with Scandinavia 165W for  
 active mode  
 4 ohm impedance  
 Size 45x85x145mm

# SCANDINAVIA



## PLUG 'N' PLAY SPEAKER SYSTEMS

Seat / Skoda / VW



### CRPP-2.6

6,5" (165mm) woofer  
1" (25mm) tweeter  
2-way component kit  
Rec. amp power: 100-200W  
90dB sensitivity, Fs 68.4Hz  
Freq. range 55-25000Hz (-3dB)  
Fibre glass cone  
& silk dome tweeter  
Fits various models of  
Seat, Skoda & VW

Seat / Skoda / VW

NEW 2023



### CRPP-2.6CX

6,5" (165mm) woofer  
1" (25mm) tweeter  
2-way coaxial speaker  
Rec. amp power: 90-180W  
90dB sensitivity, Fs 74.4Hz  
Freq. range 65-25000Hz (-3dB)  
Fibre glass cone  
& silk dome tweeter  
Fits various models of  
Seat, Skoda & VW

Volvo

NEW 2023



### CRPP-VO1.6

6,5" (165mm) woofer  
1" (25mm) tweeter  
2-way component kit  
Rec. amp power: 100-200W  
90dB sensitivity, Fs 68.2Hz  
Freq. range 55-25000Hz (-3dB)  
Fibre glass cone  
& silk dome tweeter  
Fits various models of  
Volvo

Volvo

NEW 2023



### CRPP-VO1.6CX

6,5" (165mm) woofer  
1" (25mm) tweeter  
2-way coaxial speaker  
Rec. amp power: 90-180W  
90dB sensitivity, Fs 70.8Hz  
Freq. range 65-25000Hz (-3dB)  
Fibre glass cone  
& silk dome tweeter  
Fits various models of  
Volvo

## PLUG 'N' PLAY SPEAKER SYSTEMS

**NEW 2023**



### **CRPP-BMW1.4**

4" (100mm) woofer  
1" (25mm) tweeter  
2-way component kit  
Rec. amp power: 60-120W  
86dB sensitivity, Fs 99Hz  
Freq. range 80-25000Hz (-3dB)  
Fibre glass cone  
& silk dome tweeter  
Fits various models of  
BMW

**BMW**

**NEW 2023**



### **CRPP-BMW1.8**

8" (200mm) subwoofer  
Under seat subwoofer  
4 ohm impedance  
120W RMS, 240W MAX  
86dB sensitivity, Fs 45Hz  
Freq. range 35-500Hz (-3dB)  
Fibre glass basket  
Fits various models of  
BMW

**BMW**



### **CRPP-1.6**

6,5" (165mm) woofer  
1" (25mm) tweeter  
2-way component kit  
Rec. amp power: 100-200W  
90dB sensitivity, Fs 72.5Hz  
Freq. range 55-25000Hz (-3dB)  
Fibre glass cone  
& silk dome tweeter  
Fits various models of  
Citroën, Fiat & Peugeot

**Citroën / Fiat / Peugeot**

**CRUISE**



## SPEAKER SYSTEMS



### **RC6.3Q-40**

6,5" (165mm) 3-way system  
63mm midrange UPI2,5  
25mm tweeter RC25  
100W RMS, 150W MAX  
85dB sensitivity  
Anodized aluminum cone  
(PENTA basket)  
Inst. depth 2,36" (60mm)  
Incl. grilles and crossover boxes



### **RZ6.2Q**

6,5" (165mm) 2-way system  
50mm wide band tweeter RC50  
100W RMS, 150W MAX  
85dB sensitivity  
Anodized aluminum cone  
(PENTA basket)  
Inst. depth 2,95" (75mm)  
Incl. grilles and crossover boxes



### **RC6.2Q**

6,5" (165mm) 2-way system  
28mm tweeter RC28  
100W RMS, 80W MAX  
86dB sensitivity  
Anodized aluminum cone  
(PENTA basket)  
Inst. depth 2,95" (75mm)  
Incl. grilles and crossover boxes



### **RCS6.2i**

Slim 6,5" (165mm) 2-way system  
25mm tweeter RC25  
50W RMS, 90W MAX  
86dB sensitivity  
Fibre glass cone  
Inst. depth 1,77" (45mm)  
Incl. grilles and crossover boxes



### **RCS5.2**

5,25" (130mm) 2-way system  
25mm tweeter RC25  
50W RMS, 90W MAX  
86dB sensitivity  
Fibre glass cone  
Inst. depth 1,7" (43mm)  
Incl. grilles and crossover boxes



### **RC4.2**

4" (100mm) 2-way system  
25mm tweeter RC25  
60W RMS, 100W MAX  
86dB sensitivity  
Coated paper cone  
Inst. depth 2,25" (57mm)  
Incl. grilles and crossover boxes

# REFERENCE





## SUBWOOFERS



### ACW10

10" (250mm) active subwoofer  
2 ohm impedance  
200W RMS, 450W MAX  
Frequency range 30Hz - 150Hz  
Low pass filter 50Hz - 150Hz  
Sealed diecast alu. enclosure  
Built in class D amplifier

*"The most popular under seat subwoofer in the world!"*



### ACW68

6x8" (150x200mm) active subwoofer  
2 ohm impedance  
120W RMS, 250W MAX  
Frequency range 30Hz - 150Hz  
Low pass filter 50Hz - 150Hz  
Sealed diecast alu. enclosure  
Built in class AB amplifier



### RCS10.D2

10" (250mm) subwoofer  
2+2 ohm impedance  
600W RMS, 1200W MAX  
85dB sensitivity  
Sandwich composite cone  
Inst. depth 4" (97mm)  
Fs 33Hz, Qts 0,47,  
Vas 26,2, Ft 1,23 (35 litres)



### RCW10

10" (250mm) subwoofer  
2x4 ohm impedance  
300W RMS, 600W MAX  
84,4dB sensitivity  
Aluminum "one cone body"  
Inst. depth 5,23" (133mm)  
Fs 28,2Hz, Qts 0,37,  
Vas 1,32, Ft 3 (37,6 litres)



### RCW12.D2

12" (300mm) subwoofer  
2+2 ohm impedance  
600W RMS, 1200W MAX  
88dB sensitivity  
Aluminum "one cone body"  
Inst. depth 5,67" (144mm)  
Fs 25Hz, Qts 0,31,  
Vas 80,3, 1,27 Cu ft (36 litres)

COMING SOON IN 8" & 12"

# REFERENCE



## AMPLIFIERS



### **CCi500**

Mono amplifier  
1x550W @ 1 ohm  
1x400W @ 2 ohm  
1x250W @ 4 ohm  
High level input with auto start  
LP-filter variable 35-250Hz  
Subsonic filter variable  
25Hz /ON / OFF  
BASS EQ 0 - +6dB  
Size 54x129x320mm



### **CCi44**

4-channel amplifier  
4x85W @ 4 ohm  
4x110W @ 2 ohm  
2x220W @ 4 ohm bridged  
High level input with auto start  
LP-filter variable 50-500Hz  
HP-filter variable 50-500Hz  
Size 54x129x320mm



### **CCi4**

4-channel amplifier  
4x50W @ 4 ohm  
4x70W @ 2 ohm  
2x170W @ 4 ohm bridged  
High level input with auto start  
LP-filter variable 50-500Hz  
HP-filter variable 50-500Hz  
Size 54x129x260mm



### **CCi2**

2-channel amplifier  
2x110W @ 4 ohm  
2x170W @ 2 ohm  
1x340W @ 4 ohm bridged  
High level input with auto start  
LP-filter variable 50-500Hz  
HP-filter variable 50-500Hz  
BASS EQ 0 - +6dB  
Size 54x129x260mm

# REFERENCE



## COAXIALS AND TRIAXIALS



### **M3710i**

7x10" (180x250mm) 3-way system  
25mm midrange & 20mm tweeter  
120W RMS, 200W MAX  
90dB sensitivity  
Fibre glass cone  
Inst. depth 3,75" (95mm)  
Incl. grilles and crossover boxes



### **M369**

6x9" (165x236mm) 3-way system  
45mm midrange & 25mm tweeter  
80W RMS, 120W MAX  
89,3dB sensitivity  
Fibre glass cone  
Inst. depth 1,81" (86mm)  
Incl. grilles and separate HP / LP  
cable crossovers



### **M526i**

6,5" (160mm) 2-way coaxial  
20mm silk dome tweeter  
50W RMS, 75W MAX  
86dB sensitivity  
Fibre glass cone  
Inst. depth 1,77" (45mm)  
Incl. grilles and crossover boxes



### **M226**

Slim 6,5" (165mm) coaxial  
16mm mylar tweeter  
50W RMS, 75W MAX  
85dB sensitivity  
Polypropylene cone  
Inst. depth 1,77" (45mm)  
Incl. grilles and in-line crossovers



### **M225**

Slim 5,25" (130mm) coaxial  
16mm mylar tweeter  
50W RMS, 75W MAX  
85dB sensitivity  
Fibre glass cone  
Inst. depth 1,7" (43mm)  
Incl. grilles and in-line crossovers



### **M224**

4" (100mm) coaxial  
16mm mylar tweeter  
50W RMS, 75W MAX  
85dB sensitivity  
Polypropylene cone  
Inst. depth 1,89" (48mm)  
Incl. grilles and in-line crossovers

# PERFORMANCE



## SPEAKER SYSTEMS



### PA6.20

6,5" (165mm) 2-way system  
20mm Neodymium tweeter  
50W RMS, 100W MAX  
89dB sensitivity  
Polypropylene cone  
Inst. depth 2,28" (58mm)  
Incl. grilles and crossover boxes



### PA6

6,5" (165mm) coaxial speaker  
13mm Neodymium tweeter  
50W RMS, 100W MAX  
86dB sensitivity  
Polypropylene cone  
Inst. depth 2,28" (58mm)  
Incl. grilles and speaker cables

## SUBWOOFERS



### PS10

10" (250mm) slim subwoofer  
4 ohm impedance  
400W RMS, 800W MAX  
84dB sensitivity  
Injection moulded PP cone  
Inst. depth 3,4" (86mm)  
Fs 35Hz, Qts 0,51,  
Vas 28,2, Ft 1,37 (39 litres)



### MCW10

10" (250mm) subwoofer  
4 ohm impedance  
200W RMS, 400W MAX  
86,7dB sensitivity  
Strong pressed paper cone  
Inst. depth 4,52" (115mm)  
Fs 40,4Hz, Qts 0,44,  
Vas 0,76 ft3 (21,4 litres)



### MCW12

12" (300mm) subwoofer  
4 ohm impedance  
250W RMS, 500W MAX  
87,7dB sensitivity  
Strong pressed paper cone  
Inst. depth 5,12" (130mm)  
Fs 33,5Hz, Qts 0,52,  
Vas 2,01 ft3 (57 litres)

# PERFORMANCE

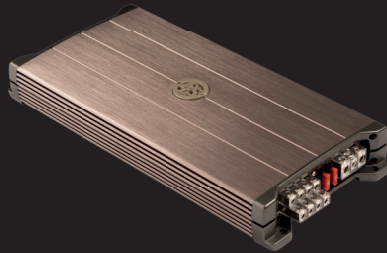


## AMPLIFIERS



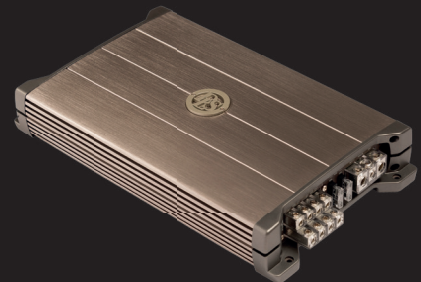
### **P10**

Mono amplifier  
1x260W @ 4 ohm  
1x450W @ 2 ohm  
High level input with auto start  
LP-filter variable 50-200Hz  
BASS EQ 50Hz - +6dB  
Remote level control, internal fan  
Size 55x188x320mm



### **P44**

4-channel amplifier  
4x140W @ 2 ohm  
2x280W @ 4 ohm bridged  
High level input with auto start  
LP-filter variable 50-500Hz  
HP-filter variable 50-500Hz  
BASS EQ 50Hz - +6dB  
Size 55x188x400mm



### **P40**

4-channel amplifier  
4x100W @ 2 ohm  
2x200W @ 4 ohm bridged  
High level input with auto start  
LP-filter variable 50-500Hz  
HP-filter variable 50-500Hz  
BASS EQ 50Hz - +6dB  
Size 55x188x320mm



### **P20**

2-channel amplifier  
2x100W @ 2 ohm  
1x200W @ 4 ohm bridged  
High level input with auto start  
LP-filter variable 50-500Hz  
HP-filter variable 50-500Hz  
BASS EQ 50Hz - +6dB / +12dB  
Size 55x188x210mm

# PERFORMANCE



## MARINE PRODUCTS



### MARINE 225i

5,25" (130mm) coaxial speakers  
16mm mylar tweeter  
60W RMS, 100W MAX  
Polypropylene cone  
IP65 classification  
Inst. depth 2,8" (71mm)  
Incl. grill and in-line crossovers



### MARINE 226i

6,5" (165mm) coaxial speakers  
16mm mylar tweeter  
60W RMS, 100W MAX  
Polypropylene cone  
IP65 classification  
Inst. depth 2,99" (76mm)  
Incl. grill



### MARINE M40

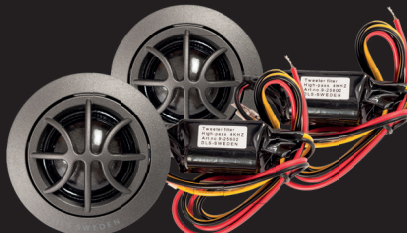
4-channel amplifier  
4x100W @ 2 ohm  
2x200W @ 4 ohm bridged  
High level input with auto start  
LP-filter variable 50-500Hz  
HP-filter variable 50-500Hz  
BASS EQ 50Hz - +6dB  
Size 46x189x322mm

## ACCESSORIES



### HLC4.2

High-Low level converter  
Used for both 2- and 4-channel  
Number of channels 4



### RC25

1" (25mm) silk dome tweeter  
50W RMS, 80W MAX  
93dB sensitivity



### RC50

2" (50mm) wide band tweeter  
Fibre glass cone  
50W RMS, 80W MAX  
83,2dB sensitivity  
Acoustic resonance rear chamber  
Inst. depth 1,77" / 1,46"  
(45mm / 37mm)  
Incl. mounting accessories



### HLC-EBC

Bass remote level control for  
HLC4.2 channel 3+4 mono  
Incl. 5mm connection cable



### XO412

High pass filter for tweeters  
Slope 12dB  
Crossover frequency 4kHz

# EXTRA



## PERSONAL NOTES



DLS is a part of Winn Scandinavia AB

[www.winnscandinavia.com](http://www.winnscandinavia.com) - Elementvägen 15, SE-702 72 Örebro - Sweden

