

ENGLISH



CAR AUDIO SYSTEMS



2022

ESX - CAR AUDIO SYSTEMS

SMART AUTOMOTIVE SOUND TECHNOLOGY

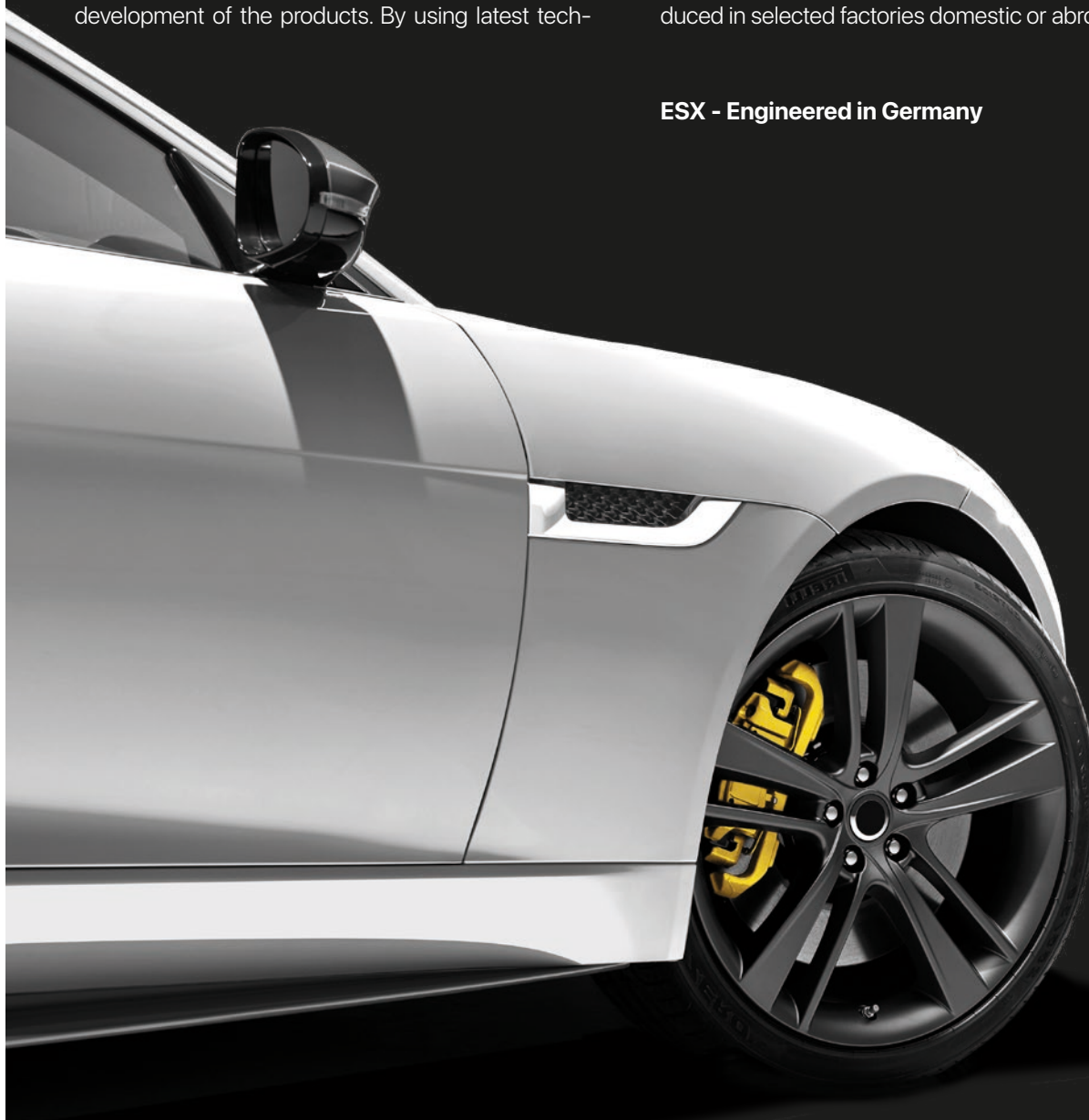
ESX Car Audio Systems was founded in the mid 90's by enthusiastic veterans of the US car audio scene, with the mission to create only the "best of the best". In cooperation with renowned engineers like Stephen Mantz, many milestones and classics in the car audio sector were created during the almost fifteen years lasting story of success – beginning with the legendary QUANTUM 1 amplifiers up to the technological master pieces of the VISION 1 amplifier series.

Around the new millennium the worldwide brand rights were taken over by the German Distributor Audio Design GmbH. Since then the famous and respected "German Virtues" additionally influenced the development of the products. By using latest tech-

nologies and sophisticated serial features combined with the timeless design and proven quality, ESX became a serious factor for car audio in Europe, impressively emphasized by countless awards, test awards and dream results in the trade press.

ESX was always famous for first class amplifiers, but in recent years the brand also acquired a distinguished reputation for high end subwoofers and loudspeakers. All of today's ESX products are drafted by an international team of developers and designers and get checked for their series-production readiness within comprehensive tryouts and endurance testing at the German Headquarter in Kronau, before they are produced in selected factories domestic or abroad.

ESX - Engineered in Germany



DSP	4
AMPLIFIERS	8
SUBWOOFERS	20
ENCLOSURES	24
ACTIVE SUBWOOFER SYSTEMS	28
LOUDSPEAKERS	30
SOUND UPGRADES	38
ACCESSORIES	42

DSP

SOUND TUNING REDEFINED



QUANTUM QE

Digital Signal Processor with full HD Audio Player

- Aluminum Heatsink with Side Castings
- Screw-type RCA Sockets
- Integrated Bluetooth® Receiver
- Compatible with ESX Toolkit App and PC Software
- Controllable with optional Remote Controller RC-QE, RC-BT and „ESX Music“ App



QE812SP NEW

Digital 12-Channel Signal Processor with Full HD Audio Player, 8 Inputs / 12 Outputs

Features:

Analog Devices™ Dual DSP Chip 2 x 32 Bit, 294 MHz
AKM Velvet Sound™ Converter, 32 Bit
Full HD Audio Player for Files up to 24 bit/256 kHz
EPS PRO, Remote Out, Preset Auto Switch

Inputs:

8 x RCA Input, balanced
8 x High Level Input (1~15 or 15~45 V/RMS)
1 x Optical stereo, S/PDIF 192 kHz, 24 bit
1 x Coaxial stereo, S/PDIF 192 kHz, 24 bit
1 x Bluetooth® stereo

Outputs:

12 x RCA @ 6 V RMS, 1 x RCA Video

Dimensions:

155 x 46 x 279 mm

With the internal full HD Audio Player it is possible to play file formats such as DFF / DSF / DSD or WAV / FLAC / APE / AIFF / MP3 / AAC / OGG / WMA / MV via a connected USB medium. The audio player can be controlled via the smartphone app "ESX Music" as well as via the RC-QE or RC-BT remote controllers.

RC-QE NEW

Remote Controller for QE812SP with color display for controlling the HD Audio Player and the DSP Presets



RC-BT NEW

Bluetooth Remote Controller for QE812SP with steering wheel mount for controlling the HD Audio Player and the DSP Presets



QUANTUM QL

Digital Signal Processor

- Aluminum heatsink with side castings
- Integrated Bluetooth® Receiver
- Compatible with ESX Toolkit App and PC Software
- Controllable with optional Remote Controller RC-DQ



QL812SP NEW

Digital 12-Channel Signal Processor 8 Inputs / 12 Outputs

Features:

Analog Devices™ Dual DSP Chip 2 x 32 Bit, 294 MHz
AKM Velvet Sound™ Converter, 32 Bit
EPS PRO, Remote Out, Preset Auto Switch

Inputs:

8 x RCA Input, balanced
8 x High Level Input (1~15 or 15~45 V/RMS)
1 x Optical stereo, S/PDIF 192 kHz, 24 bit
1 x Coaxial stereo, S/PDIF 192 kHz, 24 bit
1 x Bluetooth® stereo

Outputs:

12 x RCA @ 6 V RMS

Dimensions:

120 x 42 x 226 mm

QL810SP NEW

Digital 10-Channel Signal Processor 8 Inputs / 10 Outputs

Features:

Analog Devices™ Dual DSP Chip 2 x 32 Bit, 294 MHz
AKM Velvet Sound™ Converter, 32 Bit
EPS PRO, Remote Out, Preset Auto Switch

Inputs:

8 x RCA Input, balanced
8 x High Level Input (1~15 or 15~45 V/RMS)
1 x Optical stereo, S/PDIF 192 kHz, 24 bit
1 x Coaxial stereo, S/PDIF 192 kHz, 24 bit
1 x Bluetooth® stereo

Outputs:

10 x RCA @ 6 V RMS

Dimensions:

120 x 42 x 226 mm

RC-DQ NEW

Remote Controller for QL812SP and QL810SP with LCD display for controlling the bass level and the overall volume as well as for selecting the DSP presets.



Incl. aluminium installation housing

QUANTUM QM

Digital Signal Processor

- Compact Aluminum Heatsink with Side Castings
- Integrated Bluetooth® Receiver
- Compatible with ESX Toolkit App and PC Software
- Controllable with optional Remote Controller RC-DQ

EMPFEHLUNG
Soundprozessor
CAR, HiFi 5/2021

CAR, HiFi 8/21
ESX QM66SP
„Verarbeitung, Ausstattung und Abstimmung sind top – ein echter DSP für einstellbare Klangqualität.“



ESX DSP TOOLKIT
PC & APP CONTROL

QM66SP NEW

Digital 6-Channel Signal Processor
6 Inputs / 6 Outputs

Features:

Analog Devices™ DSP Chip 32 Bit, 294 MHz
AKM Velvet Sound™ Converter, 32 Bit
EPS PRO, Remote Out, Preset Auto Switch

Inputs:

6 x RCA Input, balanced
6 x High Level Input (1~15 oder 15~45 V/RMS)
1 x Optical stereo, S/PDIF 192 kHz, 24 bit
1 x Bluetooth® stereo

Outputs:

6 x RCA @ 6 V RMS

Dimensions:

102 x 40 x 191 mm

RC-DQ NEW

Remote Controller for QM66SP
with LCD display for controlling the
bass level and the overall volume as
well as for selecting the DSP presets.



Incl. aluminium installation housing



DIRECTION D

Digital Signal Processor

- Compact Heatsink
- Optional Bluetooth® Receiver BT-D for retrofitting
- Compatible with ESX Toolkit App and PC Software
- Controllable with optional Remote Controller RC-DQ



HIGHLIGHT
Soundprozessor
CAR, HiFi 4/2021

CAR, HiFi 4/21
ESX D66SP/D68SP
„Exzellente Hardware mit 32-Bit-Signaleweg und
Hilfreich-Präzisionsumgebung. Eine hervorragende
Usability bei der Software und das Ganze zum
attraktiven Preis.“



ESX DSP TOOLKIT
PC & APP CONTROL

D68SP NEW

Digital 6-Channel Signal Processor
6 Inputs / 8 Outputs

Features:

Analog Devices™ DSP Chip 32 Bit, 294 MHz
AKM Velvet Sound™ Converter, 32 Bit
EPS PRO, Remote Out, Preset Auto Switch

Inputs:

6 x RCA Input, balanced
6 x High Level Input (1~15 oder 15~45 V/RMS)

Outputs:

8 x RCA @ 6 V RMS

Dimensions:

105 x 40 x 185 mm



BT-D NEW

Retrofit Bluetooth® Receiver
for D68SP and D66 SP, incl. Antenna

D66SP NEW

Digital 6-Channel Signal Processor
6 Inputs / 6 Outputs

Features:

Analog Devices™ DSP Chip 32 Bit, 294 MHz
AKM Velvet Sound™ Converter, 32 Bit
Error Protection System PRO

Inputs:

6 x RCA Input, balanced
6 x High Level Input (1~15 oder 15~45 V/RMS)

Outputs:

6 x RCA @ 6 V RMS

Dimensions:

105 x 40 x 185 mm

RC-DQ NEW

Remote Controller for D68SP
and D66SP with LCD display for
controlling the bass level and the
overall volume as well as for select-
ing the DSP presets.



Incl. aluminium installation housing

ESX DSP TOOLKIT

PC Software & Smartphone App

- Intuitive Menu Navigation and Full Control
- Adjustable parameters and options: Crossovers, Time Correction, Master Gain, Channel Gain, Phase Shift, Input Mixer, Subwoofer Gain, Priority Inputs and much more..
- Input EQs
- Standard & Expert EQs (PEQ/HSLF/LSLF)
- Staging EQs, Balance and Level Mode
- 8 Presets storable
- Sharing Function for Presets



ESX TOOLKIT PC **NEW**

PC Software für Microsoft® Windows™ 10 or newer
Free download at esxaudio.de/dsp
Connection to the DSP is via USB cable

ESX TOOLKIT APP **NEW**

App for iOS™/Android™ Mobile Devices
Free download at App Store or Google Play Store
Wireless Connection to the DSP via Bluetooth Receiver



XENIUM X

Digital Signal Processor

- Compact Aluminum Heatsink with Side Castings
- RCA In & Outputs configurable via DSP
- X-CONTROL 2 DSP Software for Windows™
- Remote controller with LED display, including Input Selector, Master Volume and Subwoofer Level Controller
- 10 Presets storable



X-DSP

Digital 6-Channel Signal Processor
6 Inputs / 8 Outputs

Features:
Cirrus Logic Single Core 32 bit, 8-Channel, 192 kHz
USB Port for DSP Software X-CONTROL 2
Gain -40~+12dB
31-band EQ 20~20.000 Hz
6~48 db/Oct. Crossovers HP/BP/LP
Time Correction 0~15 ms/0~510 cm
Phase Shift 0°/180°

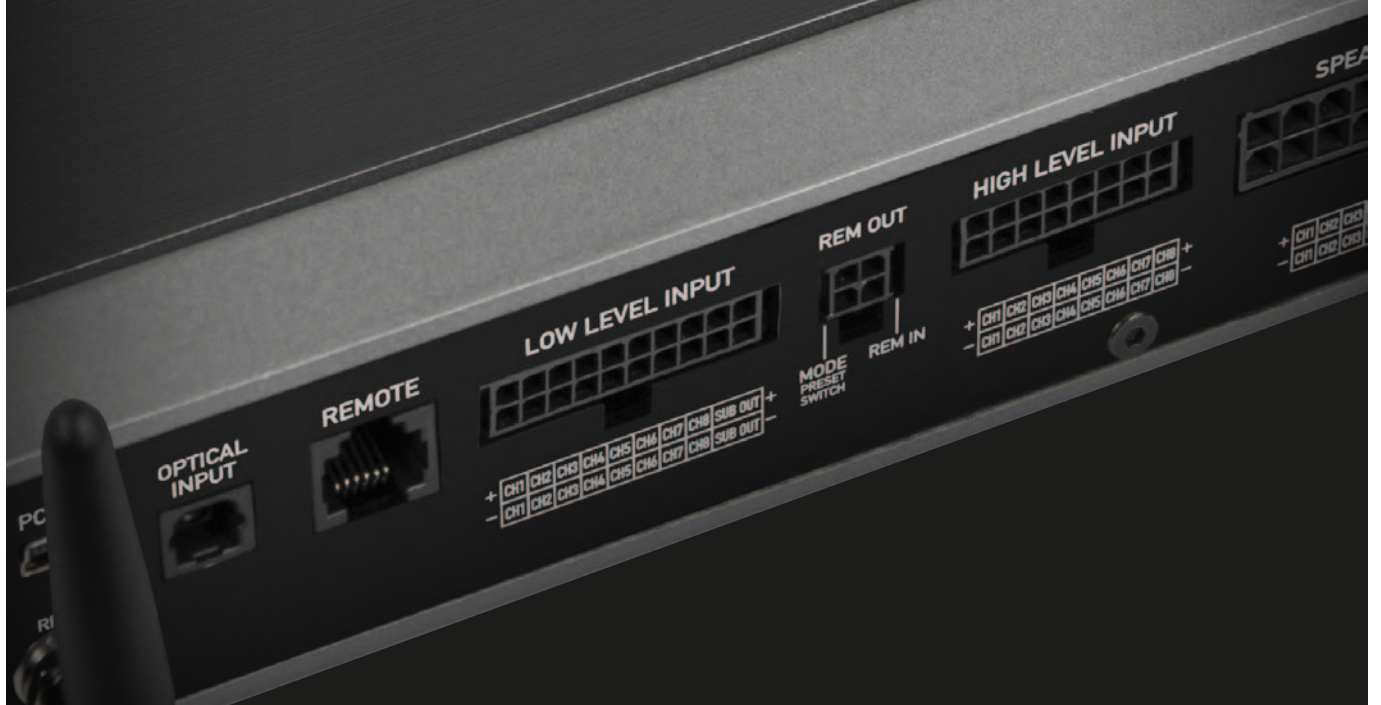
Inputs:
6 x RCA Input
6 x High Level Input
1 x Optical stereo, S/PDIF 192 kHz, 24 bit
1 x AUX Input 3,5 mm Jack

Outputs:
8 x RCA @ 6 V RMS

Dimensions:
120 x 40 x 216 mm

AMPLIFIERS

EXTRA CLASS SOUND EXPERIENCES



VISION VXE

High End Class D Amplifiers with DSP

- Class D Technology with very high Efficiency
- Selected and audiophile tuned Components
- Interference-free Technology (ITF), high EMC
- Massive Aluminum Heatsink with illuminated Logo Badge
- Integrated Bluetooth® Receiver
- Compatible with ESX Toolkit App and PC Software
- Controllable with optional Remote Controller RC-DQ



VXE7.1 NEW

7-Channel Class D Amplifier with 8-Channel DSP

5 x 100 W/RMS @ 4 Ω for Loudspeakers
2 x 200 W/RMS @ 2 Ω for Subwoofers

Features:

Analog Devices™ DSP Chip 32 Bit, 294 MHz
AKM Velvet Sound™ Converter, 32 Bit
EPS PRO, Remote Out, Preset Auto Switch

Inputs:

6 x RCA Input via Cable Set
6 x High Level Input (2~15 oder 15~40 V/RMS)
1 x Optical stereo, S/PDIF 192 kHz, 24 bit
1 x Bluetooth® stereo

Outputs:

1 x RCA @ 6 V RMS (Mono)

Dimensions:

250 x 50 x 150 mm

RC-DQ NEW

Remote Controller for VXE11.1 and VXE7.1 with LCD display for controlling the bass level and the overall volume as well as for selecting the DSP presets.



Incl. aluminium installation housing



ESX DSP TOOLKIT
PC & APP CONTROL

VXE11.1 NEW

11-Channel Class D Amplifier with 12-Channel DSP

9 x 100 W/RMS @ 4 Ω for Loudspeakers
2 x 200 W/RMS @ 2 Ω for Subwoofers

Features:

Analog Devices™ Dual DSP Chip 2 x 32 Bit, 294 MHz
AKM Velvet Sound™ Converter, 32 Bit
EPS PRO, Remote Out, Preset Auto Switch

Inputs:

8 x RCA Input via Cable Set
8 x High Level Input (2~15 oder 15~40 V/RMS)
1 x Optical stereo, S/PDIF 192 kHz, 24 bit
1 x Bluetooth® stereo

Outputs:

1 x RCA @ 6 V RMS (Mono)

Dimensions:

284 x 50 x 181 mm



ESX DSP TOOLKIT
PC & APP CONTROL



VISION VX PRO

Class D High Power SPL Amplifiers

- Ultra Class D Technology with very high Efficiency and enormous Power
- Screw-type RCA Sockets
- Encapsulated Connection Terminals
- Internal Fan Cooling
- Clipping LED



VX1400.4 PRO NEW

4-Channel Ultra Class D Amplifier
4 x 200/350 W/RMS @ 4/2 Ω
Highpass 50 - 5000 Hz (CH1/2)
Lowpass 50 - 5000 Hz (CH3/4)
Highpass 10 - 500 Hz (CH3/4)
Dimensions 192 x 65 x 197/227 mm

VX2000 PRO NEW

Mono Ultra Class D Amplifier
1 x 600/1000/2000 W/RMS @ 4/2/1 Ω
Lowpass 50 - 5000 Hz
Subsonic 10 - 100 Hz
Bass Boost 0 - 12 dB @ 30 - 70 Hz
Dimensions 192 x 65 x 167/197 mm

VX3000 PRO NEW

Mono Ultra Class D Amplifier
1 x 800/1500/3000 W/RMS @ 4/2/1 Ω
Lowpass 50 - 5000 Hz
Subsonic 10 - 100 Hz
Bass Boost 0 - 12 dB @ 30 - 70 Hz
Dimensions 192 x 65 x 197/227 mm

VX5000 PRO NEW

Mono Ultra Class D Amplifier
1 x 1300/2500/5000 W/RMS @ 4/2/1 Ω
Lowpass 50 - 5000 Hz
Subsonic 10 - 100 Hz
Bass Boost 0 - 12 dB @ 30 - 70 Hz
Dimensions 192 x 65 x 237/267 mm

VX8000 PRO NEW

Mono Ultra Class D Amplifier
1 x 2100/4000/8000 W/RMS @ 4/2/1 Ω
Lowpass 50 - 5000 Hz
Subsonic 10 - 100 Hz
Bass Boost 0 - 12 dB @ 30 - 70 Hz
Dimensions 192 x 65 x 307/337 mm

VX13000 PRO NEW

Mono Ultra Class D Amplifier
1 x 3000/6000/13000 W/RMS @ 4/2/1 Ω
Lowpass 50 - 5000 Hz
Subsonic 10 - 100 Hz
Bass Boost 0 - 12 dB @ 30 - 70 Hz
Dimensions 192 x 65 x 307/337 mm



SPL
PRO SERIES

**BIS ZU 13 KW
SUBWOOFER
POWER**



QUANTUM QE

Class D Power Amplifiers

- Class D Technology with very high Efficiency
- Selected and audiophile tuned Components
- Interference-free Technology (ITF), high EMC
- High Level Inputs with Error Protection System
- Compact Bass Level Remote Controller
- Solid Aluminum Heatsink



QE1200.4 EISA AWARD

4-Channel Class D Amplifier

4 x 200/300 W/RMS @ 4/2 Ω
 2 x 600 W/RMS @ 4 Ω bridged
 Highpass 50 - 5000 Hz (CH1/2)
 Highpass 10 - 500 Hz (CH3/4)
 Lowpass 50 - 5000 Hz (CH3/4)
 Bass Boost 0 - 12 dB (CH3/4)
 Bandpass Function (CH3/4)
 CH3/4 > CH1/2 Copy Function
 RCA Inputs, RCA Outputs
 High Level Inputs with EPS
 Auto Turn-On
 Bass Level Remote Controller
 Dimensions 280 x 46 x 165 mm



QE900.4

4-Channel Class D Amplifier

4 x 150/225 W/RMS @ 4/2 Ω
 2 x 450 W/RMS @ 4 Ω bridged
 Highpass 50 - 5000 Hz (CH1/2)
 Highpass 10 - 500 Hz (CH3/4)
 Lowpass 50 - 5000 Hz (CH3/4)
 Bass Boost 0 - 12 dB (CH3/4)
 Bandpass Function (CH3/4)
 CH3/4 > CH1/2 Copy Function
 RCA Inputs, RCA Outputs
 High Level Inputs with EPS
 Auto Turn-On
 Bass Level Remote Controller
 Dimensions 280 x 46 x 165 mm



QE600.2

2-Channel Class D Amplifier

2 x 175/300 W/RMS @ 4/2 Ω
 1 x 600 W/RMS @ 4 Ω bridged
 Highpass 10 - 500 Hz
 Lowpass 50 - 5000 Hz
 Bass Boost 0 - 12 dB
 Bandpass Function
 RCA Inputs, RCA Outputs
 High Level Inputs with EPS
 Auto Turn-On
 Bass Level Remote Controller
 Dimensions 280 x 46 x 165 mm



QE1500.1

Mono Class D Amplifier

1 x 500/850/1500 W/RMS @ 4/2/1 Ω
 Subsonic 10 - 40 Hz
 Lowpass 40 - 150 Hz
 Bass Boost 0 - 18 dB
 Phase Controller 0 - 180°
 RCA Inputs, RCA Outputs
 High Level Inputs with EPS
 Auto Turn-On
 Bass Level Remote Controller
 Dimensions 280 x 46 x 165 mm

QE1000.1

Mono Class D Amplifier

1 x 350/600/1000 W/RMS @ 4/2/1 Ω
 Subsonic 10 - 40 Hz
 Lowpass 40 - 150 Hz
 Bass Boost 0 - 18 dB
 Phase Controller 0 - 180°
 RCA Inputs, RCA Outputs
 High Level Inputs with EPS
 Auto Turn-On
 Bass Level Remote Controller
 Dimensions 280 x 46 x 165 mm



QUANTUM QE DSP

Class D Amplifier with DSP

- Solid Aluminum Heatsink
- AUX & Optical Input (HD Audio)
- High Level Inputs
- Auto Turn-On
- Inputs & Outputs configurable via DSP
- USB Port for DSP Software
- X-CONTROL 2 DSP Software for Windows™
- Remote Controller with LED Display
- 10 storable Settings selectable



QE80.8 DSP

8-Channel Class D Amplifier with
8-Channel DSP Prozessor 32bit, 192kHz

8 x 80/125 W/RMS @ 4/2 Ω
4 x 250 W/RMS @ 4 Ω bridged
6 RCA Inputs
Dimensions 165 x 46 x 285 mm



QE80.4 DSP

4-Channel Class D Amplifier with
8-Channel DSP Prozessor 32bit, 192kHz

4 x 80/125 W/RMS @ 4/2 Ω
2 x 250 W/RMS @ 4 Ω bridged
4 RCA Inputs, 2 RCA Outputs
Dimensions 165 x 46 x 285 mm



QUANTUM QL

Class D Kompakt-Verstärker

- Class D Technology with very high Efficiency
- Selected and audiophile tuned Components
- Interference-free Technology (ITF), high EMC
- High Level Inputs with Error Protection System
- Compact Bass Level Remote Controller
- Solid Aluminum Heatsink



QL800.4 NEW

4-Channel Class D Amplifier

4 x 125/200 W/RMS @ 4/2 Ω
4 x 400 Watt RMS @ 4 Ω bridged
Highpass 50 - 5000 Hz (CH1/2)
Highpass 10 - 500 Hz (CH3/4)
Lowpass 50 - 5000 Hz (CH3/4)
Bass Boost 0 - 12 dB (CH3/4)
Bandpass Function (CH3/4)
CH3/4 > CH1/2 Copy Function
RCA Inputs, RCA Outputs
High Level Inputs with EPS
Auto Turn-On
Bass Level Remote Controller
Dimensions 120 x 43 x 226 mm

QL800.1 NEW

Mono Class D Amplifier

1 x 325/550/800 W/RMS @ 4/2/1 Ω
Subsonic 10 - 40 Hz
Lowpass 40 - 150 Hz
Bass Boost 0 - 18 dB
Phase Controller 0 - 180°
RCA Inputs, RCA Outputs
High Level Inputs with EPS
Auto Turn-On
Bass Level Remote Controller
Dimensions 120 x 43 x 226 mm

**BLACK EDITION
MIT BIS ZU 25%
MEHR POWER**



QL600.4 24 VOLTS

4-Channel Class D Amplifier

4 x 100/170 W/RMS @ 4/2 Ω
2 x 340 W/RMS @ 4 Ω bridged
Highpass 50 - 5000 Hz (CH1/2)
Highpass 10 - 500 Hz (CH3/4)
Lowpass 50 - 5000 Hz (CH3/4)
Bass Boost 0 - 12 dB (CH3/4)
Bandpass Function (CH3/4)
CH3/4 > CH1/2 Copy Function
RCA Inputs, RCA Outputs
High Level Inputs with EPS
Auto Turn-On
Bass Level Remote Controller
Dimensions 120 x 43 x 226 mm

QL600.2 24 VOLTS

2-Channel Class D Amplifier

2 x 175/300 W/RMS @ 4/2 Ω
1 x 600 W/RMS @ 4 Ω bridged
Highpass 10 - 500 Hz
Lowpass 50 - 5000 Hz
Bass Boost 0 - 12 dB
Bandpass Function
RCA Inputs, RCA Outputs
High Level Inputs with EPS
Auto Turn-On
Bass Level Remote Controller
Dimensions 120 x 43 x 226 mm



QL750.1 24 VOLTS

Mono Class D Amplifier

1 x 300/500/750 W/RMS @ 4/2/1 Ω
Subsonic 10 - 40 Hz
Lowpass 40 - 150 Hz
Bass Boost 0 - 18 dB
Phase Controller 0 - 180°
RCA Inputs, RCA Outputs
High Level Inputs with EPS
Auto Turn-On
Bass Level Remote Controller
Dimensions 120 x 43 x 226 mm



24V BLACK EDITION



QL500.2

2-Channel Class D Amplifier

2 x 150/250 W/RMS @ 4/2 Ω
1 x 500 W/RMS @ 4 Ω bridged
Highpass 10 - 500 Hz
Lowpass 50 - 5000 Hz
Bass Boost 0 - 12 dB
Bandpass Function
RCA Inputs, RCA Outputs
High Level Inputs with EPS
Auto Turn-On
Bass Level Remote Controller
Dimensions 120 x 43 x 226 mm



QL750.1

Mono Class D Amplifier

1 x 300/500/750 W/RMS @ 4/2/1 Ω
Subsonic 10 - 40 Hz
Lowpass 40 - 150 Hz
Bass Boost 0 - 18 dB
Phase Controller 0 - 180°
RCA Inputs, RCA Outputs
High Level Inputs with EPS
Auto Turn-On
Bass Level Remote Controller
Dimensions 120 x 43 x 226 mm

QL500.1

Mono Class D Amplifier

1 x 300/500 W/RMS @ 4/2 Ω
Subsonic 10 - 40 Hz
Lowpass 40 - 150 Hz
Bass Boost 0 - 18 dB
Phase Controller 0 - 180°
RCA Inputs, RCA Outputs
High Level Inputs with EPS
Auto Turn-On
Bass Level Remote Controller
Dimensions 120 x 43 x 226 mm

SILVER EDITION



QUANTUM QM

Class D Mini Amplifiers

- Class D Technology with very high Efficiency
- Selected and audiophile tuned Components
Interference-free Technology (ITF), high EMC
- Compact Aluminum Heatsink
- High Level Inputs with Error Protection System
- Compact Bass Level Remote Controller



**BLACK EDITION
UP TO 20%
MORE POWER**

QM500.4 NEW

4-Channel Class D Amplifier

4 x 80/125 W/RMS @ 4/2 Ω
2 x 250 Watt RMS @ 4 Ω bridged
Highpass 50 - 5000 Hz (CH1/2)
Highpass 10 - 500 Hz (CH3/4)
Lowpass 50 - 5000 Hz (CH3/4)
Bandpass Function (CH3/4)
CH3/4 > CH1/2 Copy Function
RCA Inputs, RCA Outputs
High Level Inputs with EPS
Auto Turn-On
Bass Level Remote Controller
Dimensions 112 x 35 x 190 mm

QM500.2 NEW

2-Channel Class D Amplifier

2 x 140/250 W/RMS @ 4/2 Ω
1 x 500 W/RMS @ 4 Ω bridged
Highpass 10 - 500 Hz
Lowpass 50 - 5000 Hz
Bandpass Function
RCA Inputs, RCA Outputs
High Level Inputs with EPS
Auto Turn-On
Bass Level Remote Controller
Dimensions 112 x 35 x 190 mm

QM500.1 NEW

Mono Class D Amplifier

1 x 280/500 W/RMS @ 4/2 Ω
Subsonic 10 - 40 Hz
Lowpass 50 - 500 Hz
Bass Boost 0 - 18 dB
Phase Controller 0 - 180°
RCA Inputs, RCA Outputs
High Level Inputs with EPS
Auto Turn-On
Bass Level Remote Controller
Dimensions 112 x 35 x 190 mm



QUANTUM QM

Class D Mini Amplifiers

- Class D Technology with very high Efficiency
- Selected and audiophile tuned Components
- Interference-free Technology (ITF), high EMC
- Compact Aluminum Heatsink
- High Level Inputs with Error Protection System
- Compact Bass Level Remote Controller

QM400.4

4-Channel Class D Amplifier

4 x 75/115 W/RMS @ 4/2 Ω
2 x 230 Watt RMS @ 4 Ω bridged
Highpass 50 - 5000 Hz (CH1/2)
Highpass 10 - 500 Hz (CH3/4)
Lowpass 50 - 5000 Hz (CH3/4)
Bandpass Function (CH3/4)
CH3/4 > CH1/2 Copy Function
RCA Inputs, RCA Outputs
High Level Inputs with EPS
Auto Turn-On
Bass Level Remote Controller
Dimensions 112 x 35 x 190 mm

QM400.2

2-Channel Class D Amplifier

2 x 125/225 W/RMS @ 4/2 Ω
1 x 450 W/RMS @ 4 Ω bridged
Highpass 10 - 500 Hz
Lowpass 50 - 5000 Hz
Bandpass Function
RCA Inputs, RCA Outputs
High Level Inputs with EPS
Auto Turn-On
Bass Level Remote Controller
Dimensions 112 x 35 x 190 mm

QM400.1

Mono Class D Amplifier

1 x 250/400 W/RMS @ 4/2 Ω
Subsonic 10 - 40 Hz
Lowpass 50 - 500 Hz
Bass Boost 0 - 18 dB
Phase Controller 0 - 180°
RCA Inputs, RCA Outputs
High Level Inputs with EPS
Auto Turn-On
Bass Level Remote Controller
Dimensions 112 x 35 x 190 mm



QUANTUM Q

Class D Mini Amplifiers

- Class D Technology with very high Efficiency
- Selected and audiophile tuned Components
- Compact Aluminum Heatsink
- Precious acrylic Logo Inlay
- High Level Inputs



Q-FOURv2

4-Channel Class D Amplifier

4 x 100/100 W/RMS @ 4/2 Ω
 2 x 200 W/RMS @ 4 Ω bridged
 Highpass 20 - 4000 Hz (CH1/2)
 Highpass 10 - 500 Hz (CH3/4)
 Lowpass 50 - 4000 Hz (CH3/4)
 Bass Boost 0 - 12 dB (CH3/4)
 Bandpass Function (CH3/4)
 CH3/4 > CH1/2 Dupe Function
 RCA Inputs
 High Level Inputs with EPS
 Auto Turn-On
 Dimensions 150 x 50 x 220 mm



Q-TWO

2-Channel Class D Amplifier

2 x 100/180 Watt MAX @ 4/2 Ω
 1 x 360 W/RMS @ 4 Ω bridged
 Lowpass Filter 50 Hz - 250 Hz
 Highpass Filter 50 Hz - 250 Hz
 Bass Boost 0 - 12 dB
 RCA Inputs
 High Level Inputs
 Auto Turn-On
 Dimensions 150 x 50 x 220 mm



Q-ONEv2

Mono Class D Amplifier

Mono Class D Amplifier
 1 x 300/500/700 W/RMS @ 4/2/1 Ω
 Subsonic 10 - 50 Hz
 Lowpass 30 - 250 Hz
 Bass Boost 0 - 12 dB
 Phase Controller 0 - 180°
 RCA Inputs
 High Level Inputs with EPS
 Auto Turn-On
 Bass Level Remote Controller
 Dimensions 150 x 50 x 220 mm



Q-FOURv2 24 VOLTS

4-Channel Class D Amplifier

4 x 100/100 W/RMS @ 4/2 Ω
 2 x 200 W/RMS @ 4 Ω bridged
 Highpass 20 - 4000 Hz (CH1/2)
 Highpass 10 - 500 Hz (CH3/4)
 Lowpass 50 - 4000 Hz (CH3/4)
 Bass Boost 0 - 12 dB (CH3/4)
 Bandpass Function (CH3/4)
 CH3/4 > CH1/2 Dupe Function
 RCA Inputs
 High Level Inputs with EPS
 Auto Turn-On
 Dimensions 150 x 50 x 220 mm



Q-ONEv2 24 VOLTS

Mono Class D Amplifier

Mono Class D Amplifier
 1 x 300/500/700 W/RMS @ 4/2/1 Ω
 Subsonic 10 - 50 Hz
 Lowpass 30 - 250 Hz
 Bass Boost 0 - 12 dB
 Phase Controller 0 - 180°
 RCA Inputs
 High Level Inputs with EPS
 Auto Turn-On
 Bass Level Remote Controller
 Dimensions 150 x 50 x 220 mm



24V EDITION

QUANTUM QM

Class D Micro Amplifier

- Class D Technology with very high Efficiency
- Selected and audiophile tuned Components
- Interference-free Technology (ITF), high EMC
- Extreme Compact Aluminum Heatsink
- High Level Inputs with Error Protection System



QM-FOUR NEW

4-Channel Class D Amplifier

4 x 52/90 W/RMS @ 4/2 Ω
 2 x 180 W/RMS @ 4 Ω bridged
 2 x Highpass/Lowpass 40 - 4000 Hz
 2 x Bass Boost 0/6/12 dB (CH1/2)
 RCA Inputs, RCA Outputs via Kabelbaum
 High Level Inputs with EPS
 Auto Turn-On
 Dimensions 84 x 39 x 216 mm

QM-FOUR-PP NEW

4-Channel Class D Amplifier with Plug+Play Quadlock-Adapterkabel

Adapterkabel für Quadlock-Lautsprecherstecker auf 20 PIN Molex, length 5 Meter



QM-TWOv2 NEW

2-Channel Class D Amplifier

2 x 105/150 W/RMS @ 4/2 Ω
 1 x 300 W/RMS @ 4 Ω bridged
 Highpass/Lowpass 50-250 Hz
 RCA Inputs
 High Level Inputs with EPS
 Auto Turn-On
 Dimensions: 75 x 33 x 120 mm



QM-ONE NEW

Mono Class D Amplifier

1 x 215/360 W/RMS @ 4/2 Ω
 Subsonic 10 - 40 Hz
 Lowpass 50 - 250 Hz
 Bass Boost 0 - 12 dB
 RCA Inputs
 High Level Inputs with EPS
 Auto Turn-On
 Dimensions 84 x 39 x 216 mm



QUANTUM QS

Class D Super Micro Amplifier

- Class D Technology with very high Efficiency
- Selected and audiophile tuned Components
- Interference-free Technology (ITF), high EMC
- Extrem Compact Aluminum Heatsink
- High Level Inputs with Error Protection System

QS-TWO

2-Channel Class D Amplifier

2 x 52/95 W/RMS @ 4/2 Ω
 1 x 190 W/RMS @ 4 Ω bridged
 Highpass 80 Hz
 Lowpass 80 Hz
 RCA Inputs
 RCA Outputs
 High Level Inputs with EPS
 Auto Turn-On
 Dimensions 70 x 35 x 90 mm

QS-TWO-ISO

2-Channel Class D Amplifier with ISO cable set for vehicle specific cable adapters



SIGNUM SXE

Class A/B & D Verstärker

- Aluminum Heat Sink with acrylic Inlays
- Recessed Diamond Cut Logo
- Aluminum Frames on the End Panels
- Massive Connection Terminals
- High Level Inputs with EPS
- Auto Turn-On



SXE250.4 NEW

4-Channel Class A/B Analog Amplifier

4 x 150/250 W/RMS @ 4/2 Ω
 2 x 500 W/RMS bridged @ 4 Ω
 2 x Highpass 10-250 Hz
 Lowpass 50-250 Hz
 Bass Boost 0-12 dB
 Bandpass Function
 High Level Inputs with EPS
 Auto Turn-On
 Dimensions 220 x 53 x 460 mm

SXE1000.5 NEW

5-Channel Class A/B & D Hybrid Amplifier

CH1-4/Class A/B:
 4 x 75/125 W/RMS @ 4/2 Ω, Highpass 32 Hz - 2000 Hz
CH5/Class D:
 1 x 200/350/500 W/RMS @ 4/2/1 Ω, Lowpass 32 Hz - 300 Hz
 Subsonic 10 Hz - 60 Hz, Bass Boost 0 - 12 dB @ 40 Hz - 60 Hz
 High Level Inputs with EPS
 Auto Turn-On, Bass Level Remote Controller
 Dimensions 220 x 53 x 402 mm

SXE150.4

4-Channel Class A/B Analog Amplifier

4 x 100/150 W/RMS @ 4/2 Ω
 2 x 300 W/RMS bridged @ 4 Ω
 2 x Highpass 10-250 Hz
 Lowpass 50-250 Hz
 Bass Boost 0-12 dB, Bandpass Function
 High Level Inputs with EPS
 Auto Turn-On
 Dimensions 220 x 53 x 390 mm

SXE100.4

4-Channel Class A/B Analog Amplifier

4 x 65/100 W/RMS @ 4/2 Ω
 2 x 200 W/RMS bridged @ 4 Ω
 2 x Highpass 10-250 Hz
 Lowpass 50-250 Hz
 Bass Boost 0-12 dB, Bandpass Function
 High Level Inputs with EPS
 Auto Turn-On
 Dimensions 220 x 53 x 328 mm

SX110.2

2-Channel Class A/B Analog Amplifier

2 x 70/110 W/RMS @ 4/2 Ω
 1 x 220 W/RMS bridged @ 4 Ω
 Highpass 10-250 Hz
 Lowpass 50-250 Hz
 Bass Boost 0-12 dB, Bandpass Function
 High Level Inputs with EPS
 Auto Turn-On
 Dimensions 220 x 53 x 248 mm



SXE2800.1D

Mono Class D Amplifier

1 x 650/1000/1400 W/RMS @ 4/2/1 Ω
 Lowpass 40-150 Hz
 Subsonic 10-35 Hz
 Bass Boost 0-12 dB
 Phase Switch 0-180°
 Master/Slave-Mode
 High Level Inputs with EPS
 Auto Turn-On
 Bass Level Remote Controller
 Dimensions 220 x 53 x 370 mm

SXE2000.1D

Mono Class D Amplifier

1 x 400/700/1000 W/RMS @ 4/2/1 Ω
 Lowpass 40-150 Hz
 Subsonic 10-35 Hz
 Bass Boost 0-12 dB
 Phase Switch 0-180°
 Master/Slave-Mode
 High Level Inputs with EPS
 Auto Turn-On
 Bass Level Remote Controller
 Dimensions 220 x 53 x 328 mm

SXE1200.1D

Mono Class D Amplifier

1 x 300/450/600 W/RMS @ 4/2/1 Ω
 Lowpass 40-150 Hz
 Subsonic 10-35 Hz
 Bass Boost 0-12 dB
 Phase Switch 0-180°
 Master/Slave-Mode
 High Level Inputs with EPS
 Auto Turn-On
 Bass Level Remote Controller
 Dimensions 220 x 53 x 268 mm



HORIZON HXE

Class A/B & D Verstärker

- Aluminum Heat Sink with acrylic Inlays
- Recessed Diamond Cut Logo
- Aluminum Frames on the End Panels
- Base Plate with robust Mounting Brackets



HXE750.5 **NEW**

5-Channel Class A/B Analog Amplifier

CH1-4:

4 x 60/100 W/RMS @ 4/2 Ω

Highpass 32 Hz - 2000 Hz

CH5:

1 x 200/350/500 W/RMS @ 4/2/1 Ω

Lowpass 32 Hz - 300 Hz

Subsonic 10 Hz - 60 Hz

Bass Boost 0 - 12 dB @ 40 Hz - 60 Hz

Bass Level Remote Controller

Dimensions 220 x 51 x 362 mm

HXE100.4

4-Channel Class A/B Analog Amplifier

4 x 60/100 W/RMS @ 4/2 Ω

2 x 200 W/RMS bridged @ 4 Ω

2 x Highpass 10-250 Hz

Lowpass 50-250 Hz

Bass Boost 0-12 dB, Bandpass Function

Dimensions 220 x 51 x 342 mm

HX110.2

2-Channel Class A/B Analog Amplifier

2 x 70/110 W/RMS @ 4/2 Ω

1 x 220 W/RMS bridged @ 4 Ω

Highpass 10-250 Hz

Lowpass 50-250 Hz

Bass Boost 0-12 dB, Bandpass Function

Dimensions 220 x 51 x 262 mm

HXE2000.1Dv2 **NEW**

Mono Class D Amplifier

1 x 400/700/1000 W/RMS @ 4/2/1 Ω

Lowpass 40-150 Hz

Subsonic 10-35 Hz

Bass Boost 0-12 dB

Phase Switch 0-180°

Master/Slave-Mode

High Level Inputs with EPS

Auto Turn-On

Bass Level Remote Controller

Dimensions 220 x 51 x 362 mm



HXE1000.1D **NEW**

Mono Class D Amplifier

1 x 300/450/600 W/RMS @ 4/2/1 Ω

Lowpass 40-150 Hz

Subsonic 10-35 Hz

Bass Boost 0-12 dB

Phase Switch 0-180°

Master/Slave-Mode

High Level Inputs with EPS

Auto Turn-On

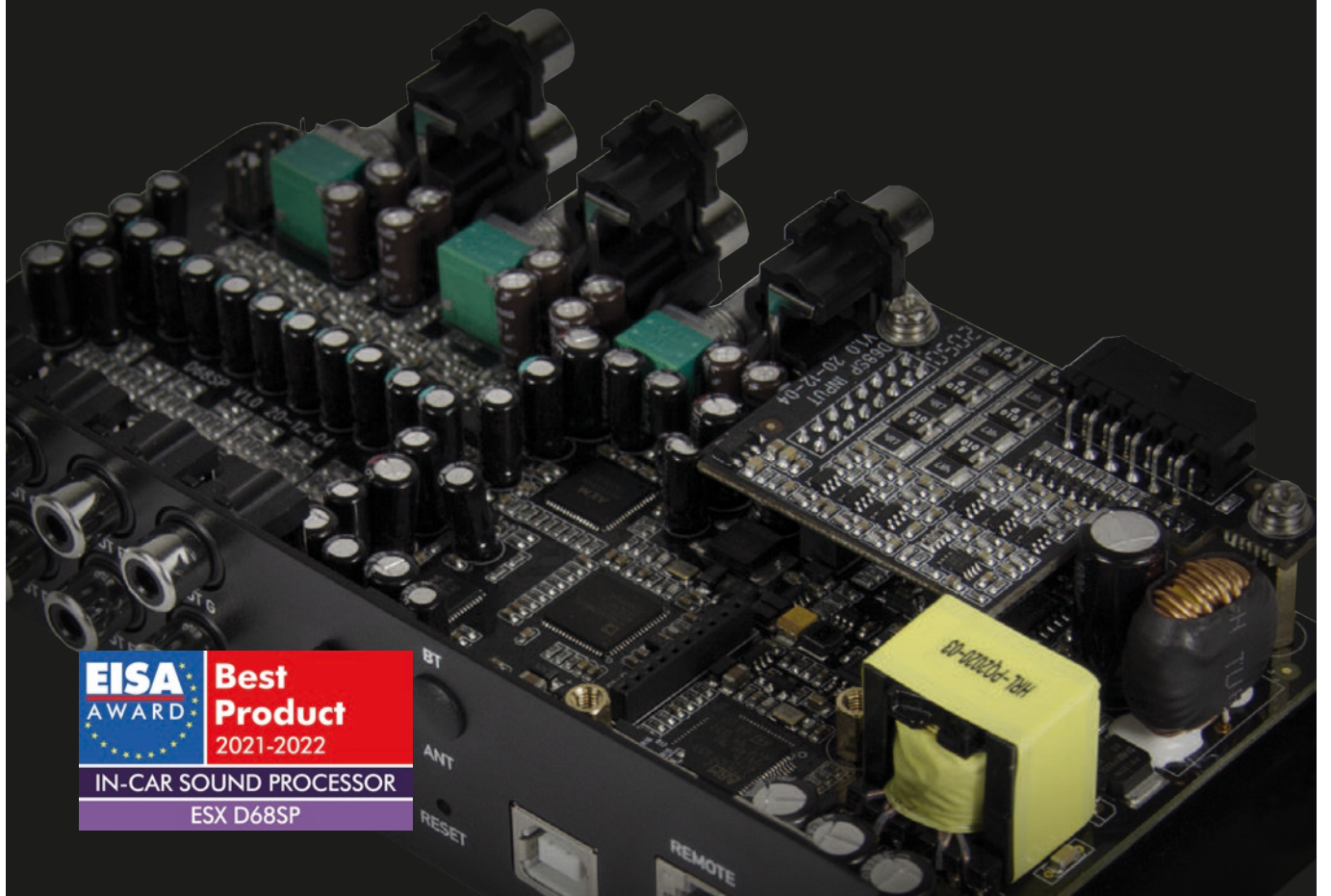
Bass Level Remote Controller

Dimensions 220 x 53 x 222 mm





AWARD-WINNING TECHNOLOGY



SUBWOOFERS

PRECISE LOW TONE IMPULSE





**SUPER SIZE
53 CM
21-INCHES**

VISION VXPROM

SPL Super Subwoofer

- Extra-robust Aluminum Cast Basket
- 4 x 150 oz. Magnet Driver (17 kg)
- Double-stitched High-roll Foam Surround
- Glass Fiber reinforced Paper Cone (1,66 m²)
- 6-layer Nomex Spider
- 8-layer 100 mm (4") Dual Voice Coil
- +/- 23 mm linear Stroke, +/- 35 mm X-Max
- Integrated 10 mm² Wiring (1,5 m)

VX21PRO

53 cm (21") SPL Subwoofer

Power Rating 6000 Watt RMS

Impedance 2 + 2 Ω

SPL up to 160 dB

Mounting Depth 335 mm

Mounting Hole 495 mm



VISION VE

SPL Subwoofers

- Robust Aluminum Cast Basket
- 3 x 100 oz. Magnet Driver (8,5 kg)
- Double-stitched High-roll Foam Surround
- Hand scooped Paper Cone
- Reinforced Aluminum Dust Cap
- 76 mm Dual Voice Coil
- Double Centering
- Chromed Pole Plates
- +/- 17,5 mm linear Stroke, +/- 25 mm X-Max



VE1222

30 cm (12") SPL Subwoofer

Power Rating 3000 Watt RMS

Impedance 2 + 2 Ω

SPL up to 151 dB

Mounting Depth 224 mm

Mounting Hole 284 mm

VE1522

38 cm (15") SPL Subwoofer

Power Rating 4000 Watt RMS

Impedance 2 + 2 Ω

SPL up to 154 dB

Mounting Depth 260 mm

Mounting Hole 358 mm

QUANTUM QXE

Sound Quality Subwoofers

- Robust Aluminum Cast Basket
- 2 x 100 oz. Magnet Driver (5,6 kg)
- Double-stitched High-roll Foam Surround
- Hand scooped Paper Cone
- 76 mm Dual Voice Coil
- Vented T-Plate and spider with rear Ventilation
- +/- 14 mm linear Stroke, +/- 22 mm X-Max



QXE15D2

38 cm (15") Subwoofer

Power Rating 1500 Watt RMS
 Impedance 2 + 2 Ω
 SPL up to 149 dB
 Mounting Depth 205 mm
 Mounting Hole 305 mm



QXE12D2

30 cm (12") Subwoofer

Power Rating 1000 Watt RMS
 Impedance 2 + 2 Ω
 SPL up to 146 dB
 Mounting Depth 185 mm
 Mounting Hole 285 mm



QE1022

25 cm (10") Subwoofer

Power Rating 600 Watt RMS
 Impedance 2 + 2 Ω
 2 x 63 oz. Magnet Driver (3,6 kg)
 76 mm Dual Voice Coil
 SPL up to 142 dB
 Mounting Depth 155 mm
 Mounting Hole 234 mm

QE822

20 cm (8") Subwoofer

Power Rating 400 Watt RMS
 Impedance 2 + 2 Ω
 2 x 63 oz. Magnet Driver (3,6 kg)
 76 mm Dual Voice Coil
 SPL up to 140 dB
 Mounting Depth 138 mm
 Mounting Hole 183 mm

QUANTUM QE

Compact Subwoofer

- Robust Aluminum Cast Basket
- Double-stitched Surround
- Hand scooped Paper Cone
- Vented Pole Core

QE622

16,5 cm (6.5") Subwoofer

Power Rating 250 Watt RMS
 Impedance 2 + 2 Ω
 2 x 40 oz. Magnet Driver (2,27 kg)
 64 mm Dual Voice Coil
 SPL up to 135 dB
 Mounting Depth 117 mm
 Mounting Hole 150 mm



SIGNUM SX

Subwoofers

- Cast Aluminum Basket
- Hand scooped Paper Cone
- 50 mm Dual Voice Coil
- Single Nomex Spider

SX1240

30 cm (12") Subwoofer

Power Rating 500 Watt RMS
Impedance 4 Ω
2 x 50 oz. Magnet Driver (2,8 kg)
SPL up to 145 dB
Mounting Depth 140 mm
Mounting Hole 282 mm

SX1040

25 cm (10") Subwoofer

Power Rating 400 Watt RMS
Impedance 4 Ω
2 x 40 oz. Magnet Driver (2,27 kg)
SPL up to 142 dB
Mounting Depth 127 mm
Mounting Hole 236 mm

SX840

20 cm (8") Subwoofer

Power Rating 300 Watt RMS
Impedance 4 Ω
2 x 24 oz. Magnet Driver (1,36 kg)
SPL up to 139 dB
Mounting Depth 114 mm
Mounting Hole 189 mm



ENCLOSURES
THE FULL LOAD OF BASS



VISION VE

Bassreflex Systems

- Cast Aluminum Basket
- Kevlar Cone
- Sturdy MDF Enclosure
- Acrylic Front Baffle
- White LED Illumination



VE250

25 cm (10") Bassreflex System

Power Rating 400 Watt RMS
Impedance 4 Ω, SPL up to 142 dB
Dimensions 44 x 35 x 36/29 cm

VE200

20 cm (8") Bassreflex System

Power Rating 300 Watt RMS
Impedance 4 Ω, SPL up to 139 dB
Dimensions 35 x 29 x 30/23 cm



VE300

30 cm (12") Bassreflex System

Power Rating 500 Watt RMS
Impedance 4 Ω, SPL up to 145 dB
Dimensions 49 x 39 x 37/29 cm



**ONLY 12 CM
HEIGHT**



VISION VS

Spare Wheel Subwoofer System

- Solid Aluminum Body
- Suitable for Spare Wheel Recess, Rim base (from 15 inches on) or Spare Wheel
- Special Subwoofer stainless Steel Cone
- Voice Coil 76 mm on Aluminum Former
- 1,42 kg Magnet Driver Ø 156 mm

VS1100P NEW

28 cm (11") Subwoofer System

Power Rating 150 Watt RMS
Impedance 2 + 2 Ω
Dimensions Ø 360 x 120 mm

QUANTUM QXB

Bassreflex System

- Sturdy MDF Enclosure
- Metal Protection Bars
- Very hard Paper Cone
- 76 mm Dual Voice Coil
- Double-stitched Surround

QXB12

30 cm (12") Bassreflex System

Power Rating 1000 Watt RMS
Impedance 2 + 2 Ω
Dimensions 63 x 40 x 37/27 cm





QUANTUM QSB

Bassreflex Systems

- Sturdy MDF Enclosure
- Metal Protection Bars
- Very hard Paper Cone
- Double-stitched Surround



QSB10

25 cm (10") Bassreflex System
 Power Rating 600 Watt RMS
 Impedance 2 + 2 Ω
 64 mm Dual Voice Coil
 Dimensions 50 x 34 x 33/25 cm



QSB8v2

20 cm (8") Bassreflex System
 Power Rating 400 Watt RMS
 Impedance 2 + 2 Ω
 64 mm Dual Voice Coil
 Dimensions 46 x 33 x 18 cm



QSB6v2

16,5 cm (6.5") Bassreflex System
 Power Rating 250 Watt RMS
 Impedance 2 + 2 Ω
 50 mm Dual Voice Coil
 Dimensions 38 x 28 x 16 cm



QSB6 and QSB8 can also be used as Downfire Subboxes

SERIES DBX

Spare Wheel Bassreflex Systems

- Sturdy MDF Enclosure
- Metal Protection Bars
- Quick Connect Terminal



DBX300Q

15 x 23 cm (6 x 9") Bassreflex System for Spare Wheel Recess
 Power Rating 200 Watt RMS, Impedance 2 + 2 Ω
 50 mm Dual Voice Coil, Dimensions Ø 50 x 15 cm



Recess with protective grid in the size 200 x 36 x 120 mm, suitable for all ESX QM Amplifiers

DBX800Q

2 x 20 cm (8") Dual Bassreflex System for Spare Wheel Recess
 Power Rating 400 Watt RMS, Impedance 2 + 2 Ω
 50 mm Dual Voice Coil, Dimensions Ø 58,5 x 18 cm



Plug+Play Harness for QUICK CONNECT Systems

- QC20** 20 cm length
- QC120** 120 cm length
- QC300** 300 cm length
- QC500** 500 cm length



SERIES DBX

Downfire Bassreflex Systems

- Sturdy MDF Enclosure
- Metal Protection Bars
- Quick Connect Terminal
- Downfire Subboxes



Recess with protective grid in the size 200 x 36 x 120 mm, suitable for all ESX QM Amplifiers

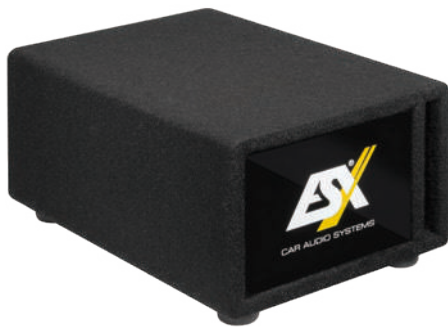
DBX200Q

15 x 23 cm (6 x 9") Bassreflex System

Power Rating 200 Watt RMS

Impedance 2 + 2 Ω, 38 mm Voice Coil

Dimensions 36,5 x 18,5 x 26,5 cm



DBX600Q

2 x 16,5 cm (6.5") Dual Bassreflex System

Power Rating 300 Watt RMS, Impedance 2 + 2 Ω

38 mm Voice Coil, Dimensions 28 x 16,5 x 86 cm



SERIES DBX

Bassreflex Systems

- Sturdy MDF Enclosure
- Metal Protection Bars
- Quick Connect Terminal



DBX208Q

2 x 20 cm (8") Dual Bassreflex System

Power Rating 400 Watt RMS

Impedance 2 + 2 Ω, 50 mm Voice Coil

Dimensions 57 x 31 x 37/22 cm



DBX206Q

2 x 16,5 cm (6.5") Dual Bassreflex System

Power Rating 300 Watt RMS

Impedance 2 + 2 Ω, 38 mm Voice Coil

Dimensions 46 x 25 x 33/21 cm



DBX112Q

30 cm (12") Single Bassreflex System

Power Rating 300 Watt RMS

Impedance 2 + 2 Ω, 50 mm Voice Coil

Dimensions 38 x 40 x 48/28 cm

DBX108Q

20 cm (8") Single Bassreflex System

Power Rating 200 Watt RMS

Impedance 2 + 2 Ω, 50 mm Voice Coil

Dimensions 36 x 29 x 38/24 cm

ACTIVE SUBWOOFER SYSTEMS

SMART SOLUTIONS FOR MORE BASS



VISION V

Active Subwoofer Systems

- Compact and space-saving Design
- Robust Enclosure Construction
- Integrated Special Subwoofer
- Powerful Amplifier Modules
- Remote Controller

V1600A

20 cm (8") Active Subwoofer System with 20 cm (8") passive Radiator

Class A/B Amplifier in Aluminum Enclosure
1 x 150/300 Watt RMS/Max.

Lowpass 50-150 Hz, Bass Boost 0-12 dB @ 45 Hz

Subsonic 25 Hz fixed, Phase Switch 0/180°

High Level Inputs, RCA Inputs, Auto Turn-On

Remote Controller for Bass Level, Input Level and Phase

Dimensions: 291 x 251 x 256 mm



**SUPER
HEAVY
ALUMINIUM
BODY**



**SUPER
HEAVY
ALUMINIUM
BODY**



V1100A

28 cm (11") Active Subwoofer System for Rim base (from 15 inches on) or Spare Wheel

Class A/B Amplifier in Aluminum Enclosure

1 x 150/300 Watt RMS/Max.

Lowpass 50-150 Hz, Bass Boost 0-12 dB @ 45 Hz

Phase Switch 0/180°, High Level Inputs, RCA Inputs, Auto Turn-On

Remote Controller for Bass Level, Input Level and Phase

Dimensions: Ø 360 x 145 mm

V800A

20 cm (8") Active Subwoofer System with 20 cm (8") Passive Radiator

Class D Amplifier in MDF Enclosure

1 x 200/400 Watt RMS/Max.

Lowpass 50-150 Hz @ 12/18 dB

Bass Boost 0-12 dB @ 45 Hz, Subsonic 15 Hz fixed

Phase Switch 0/180°, High Level Inputs,

RCA Inputs, Auto Turn-On

Bass Level Remote Controller

Dimensions: 235 x 275 x 350/240 mm



QUANTUM Q

Active Subwoofer Systems

- Compact and space-saving Design
- Sturdy Enclosure Construction
- Integrated Special Subwoofer
- Powerful Amplifier Modules
- Bass Level Remote Controller

Q800A

20 cm (8") Active Subwoofer System for Rim base (from 15 inches on) or Spare Wheel

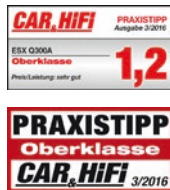
Class A/B Amplifier in Aluminum Enclosure
1 x 100/200 Watt RMS/Max.
Lowpass 50-150 Hz, Bass Boost 0-12 dB @ 45 Hz
Phase Switch 0/180°, Subsonic 20 Hz fixed
High Level Inputs, RCA Inputs, Auto Turn-On
Remote Controller for Bass Level, Input Level and Phase
Dimensions: Ø 360 x 145 mm



Q300A

15 x 23 cm (6 x 9") Active Subwoofer System for Spare Wheel Recess

Class D Amplifier in MDF Enclosure
1 x 150/300 Watt RMS/Max.
LPF 50-150 Hz, Bass Boost 0-12 dB @ 45 Hz
Phase Switch 0/180°, Subsonic 25 Hz fixed
High Level Inputs, RCA Inputs
Auto Turn-On
Bass Level Remote Controller
Detachable Connectors
Dimensions: Ø 500 x 150 mm



Seitliche Paassivwoofer für mehr Tiefbass

Q208A NEW

20 cm (8") Active Underseat Subwoofer System with lateral passive Radiators

Class A/B Amplifier in Aluminum Enclosure
1 x 150/300 Watt RMS/Max.
Lowpass 50-150 Hz, Bass Boost 0-18 dB @ 45 Hz
Phase Switch 0/180°, Subsonic 20 Hz fixed
High Level Inputs, RCA Inputs, Auto Turn-On
Bass Level Remote Controller
Dimensions: 249 x 78 x 346 mm



Q201A

20 cm (8") Active Underseat Subwoofer System

Class A/B Amplifier in Aluminum Enclosure
 1 x 100/200 Watt RMS/Max.
 Lowpassfilter 50-150 Hz, Bass Boost 0-12 dB @ 45 Hz
 Phase Switch 0/180°, Subsonic 20 Hz fixed
 High Level Inputs, RCA Inputs
 Auto Turn-On
 Bass Level Remote Controller
 Dimensions: 210 x 73 x 290 mm

Q168A NEW

15 x 20 cm (6 x 8") Active Underseat Subwoofer System

Class A/B Amplifier in Aluminum Enclosure
 1 x 100/200 Watt RMS/Max.
 Lowpassfilter 50-150 Hz, Bass Boost 0-12 dB @ 45 Hz
 Phase Switch 0/180°, Subsonic 30 Hz fixed
 High Level Inputs, RCA Inputs, Auto Turn-On
 Bass Level Remote Controller
 Dimensions: 195 x 74 x 260 mm



PASSIVE VERSION WITH LINK OPTION



Q168P NEW

15 x 20 cm (6 x 8") Underseat Subwoofer System
 Power Rating 100/200 Watt RMS/Max., Impedance 2 Ω
 Stables Aluminum Enclosure, QUICK CONNECT Terminal for connecting two Q168P incl. 2 m connection cable
 Dimensions: 195 x 74 x 260 mm

SIGNUM SL

Active Subwoofer System

- Compact and space-saving Design
- Lightweight ABS Enclosure
- Bass Level Remote Controller

SL300A

13 cm (5.25") Active Subwoofer System for Spare Wheel Recess with 3-Channel Amplifier

Subwoofer Channel:
 1 x 100/200 Watt RMS/max, Lowpass 50-150 Hz,
 Subsonic 25 Hz fixed, Phase Switch 0/180°

Satellite Channels:
 2 x 35/50 Watt RMS/Max., Highpass 100/300 Hz
 High Level Inputs, RCA Inputs
 Auto Turn-On
 Remote Controller for Bass Level, Lowpass and Phase
 Dimensions: Ø 375 x 110 mm



INTEGRATED 2.1 AMPLIFIER



SPEAKERS

FINELY DEFINED BRILLIANCE



QUANTUM QXE

Component Loudspeakers

QXE6.2C

16,5 cm (6.5") 2-Way Component System

Power Rating 125/250 Watt RMS/Max., 4 Ω
Poly-Carbon Composite Cones, Protection Grilles
Frequency Range 55 - 22000 Hz, 30 mm Voice Coils
16,6 oz. (0,47 kg) Magnet Drivers
25 mm Silk Dome Neodymium Tweeters
Separate Crossovers for Tweeter and Bass
incl. -6/- 3db Attenuation for Tweeter
Mounting Depth 63 mm, Mounting Hole 144 mm



QXE5.2C

13 cm (5.25") 2-Way Component System

Power Rating 90/180 Watt RMS/Max., 4 Ω
Poly-Carbon Composite Cones, Protection Grilles
Frequency Range 62 - 22000 Hz, 25 mm Voice Coils
12,9 oz. (0,36 kg) Magnet Drivers
25 mm Silk Dome Neodymium Tweeters
Separate Crossovers for Tweeter and Bass
incl. -6/- 3 db Attenuation for Tweeter
Mounting Depth 54 mm, Mounting Hole 115 mm

QXE8.2W NEW

20 cm (8") Bass Loudspeakers (Pair)

Power Rating 125/300 Watt RMS/Max., 3 Ω
Glass Fiber Cones
Frequency Range 35 - 5000 Hz
30 mm Voice Coil
N45 Magnet Drivers
Mounting Depth: 57 mm
Mounting Hole: 182 mm

FLAT MOUNT BASKET / 57 MM



QXE6.2W

16,5 cm (6.5") Kickbass Loudspeakers (Pair)

Power Rating 125/250 Watt RMS/Max., 4 Ω
Poly-Carbon Composite Cones, Protection Grilles
Frequency Range 55 - 5000 Hz, 30 mm Voice Coil
16,6 oz. (0,47 kg) Magnet Drivers
Mounting Depth 63 mm, Mounting Hole 144 mm

QUANTUM QXE

Coaxial Loudspeakers



QXE52

13 cm (5.25") 2-Way Coaxial Loudspeakers (Pair)

Power Rating 80/160 Watt RMS/Max., 4 Ω
Poly-Carbon Composite Cones, Protection Grilles
Frequency Range 62 - 22000 Hz, 25 mm Voice Coil
12,96 oz. (0,36 kg) Magnet Drivers
20 mm Silk Dome Neodymium Tweeters
Mounting Depth 54 mm, Mounting Hole 115 mm

QXE62

16,5 cm (6.5") 2-Way Coaxial Loudspeakers (Pair)

Power Rating 100/200 Watt RMS/Max., 4 Ω
Poly-Carbon Composite Cones
Frequency Range 55 - 22000 Hz, 30 mm Voice Coil
16,6 oz. (0,47 kg) Magnet Drivers
20 mm Silk Dome Neodymium Tweeters, Protection Grilles
Mounting Depth 63 mm, Mounting Hole 144 mm

QXE42

10 cm (4") 2-Way Coaxial Loudspeakers (Pair)

Power Rating 60/120 Watt RMS/Max., 4 Ω
Poly-Carbon Composite Cones, Protection Grilles
Frequency Range 73 - 22000 Hz, 25 mm Voice Coil
7,7 oz. (0,21 kg) Magnet Drivers
13 mm Neodymium Tweeters
Mounting Depth 49 mm, Mounting Hole: 94 mm

QUANTUM QXE

Coaxial/Triaxial Loudspeakers

QXE693

15 x 23 cm (6 x 9") 3-Way Triaxial Loudspeakers (Pair)

Power Rating 150/300 Watt RMS/Max., 4 Ω
 Poly-Carbon Composite Cones, Protection Grilles
 Frequency Range 48 - 22000 Hz, 30 mm Voice Coil
 22,4 oz. (0,635 kg) Magnet Drivers
 20 mm Silk Dome Neodymium Tweeters
 55 mm Mylar Mid Tweeter
 Mounting Depth 85 mm, Mounting Hole 152 x 220 mm



QXE572

13 x 18 cm (5 x 7") 2-Way Coaxial Loudspeakers (Pair)

Power Rating 90/180 Watt RMS/Max., 4 Ω
 Poly-Carbon Composite Cones
 Frequency Range 57 - 22000 Hz, 25 mm Voice Coil
 10 oz. (0,28 kg) Magnet Drivers
 20 mm Silk Dome Neodymium Tweeters
 Mounting Depth 58 mm, Mounting Hole 126 x 179 mm



QXE462

10 x 15 cm (4 x 6") 2-Way Coaxial Loudspeakers (Pair)

Power Rating 70/140 Watt RMS/Max., 4 Ω
 Poly-Carbon Composite Cones
 Frequency Range 68 - 22000 Hz, 25 mm Voice Coil
 6.4 oz. (0,18 kg) Magnet Drivers
 20 mm Silk Dome Neodymium Tweeters
 Mounting Depth 52 mm, Mounting Hole 87 x 143 mm



QXE410

10 x 25 cm (4 x 10") 2-Way Coaxial Loudspeakers (Pair)

Power Rating 80/160 Watt RMS/Max., 4 Ω
 Poly-Carbon Composite Cones
 Frequency Range 65 - 22000 Hz, 25 mm Voice Coil
 11 oz. (0,31 kg) Magnet Drivers
 20 mm Silk Dome Neodymium Tweeters
 Mounting Depth 63 mm, Mounting Hole 95 x 238 mm



QXE32

8,7 cm (3.5") 2-Way Coaxial Loudspeakers (Pair)

Power Rating 50/100 Watt RMS/Max., 4 Ω
 Poly-Carbon Composite Cones
 Frequency Range 86 - 22000 Hz, 20 mm Voice Coil
 4.2 oz. (0,12 kg) Magnet Drivers
 13 mm Neodymium Tweeters
 Mounting Depth 43 mm, Mounting Hole 78 mm



QXE120 NEW

12 cm (4.7") 2-Way Coaxial Loudspeakers (Pair)

Power Rating 75/150 Watt RMS/Max., 4 Ω
 Polypropylene Graphite Cones
 Frequency Range 60 - 22000 Hz
 20 mm Aluminum Neodymium Tweeters
 Mounting Depth 49 mm, Mounting Hole 110 mm

**FITS INTO
 MERCEDES
 W124**



SIGNUM SXE

Component Loudspeakers

**EXTRA
FLAT
BASKET**

SXE6.2C

16,5 cm (6.5") 2-Way Component System

Power Rating 100 Watt/RMS, 200 Watt/max., 3 Ω

Sandpaper Cones, Frequency Range 60 - 22000 Hz

Separate Crossovers for Tweeter and Bass

20 mm Silk Dome Neodymium Tweeters, Protection Grilles

Mounting Depth 55 mm, Mounting Hole 144 mm



SXE5.2C

13 cm (5.25") 2-Way Component System

Power Rating 80 Watt/RMS, 160 Watt/max., 3 Ω

Sandpaper Cones, Frequency Range 67 - 22000 Hz

Separate Crossovers for Tweeter and Bass

20 mm Silk Dome Neodymium Tweeters, Protection Grilles

Mounting Depth 48 mm, Mounting Hole 115 mm

**3Ω
Impedance**

SXE4.2C

10 cm (4") 2-Way Component System

Power Rating 70 Watt/RMS, 140 Watt/max., 3 Ω

Sandpaper Cones, Frequency Range 76 - 22000 Hz

Cable Crossovers for the Tweeters

20 mm Silk Dome Neodymium Tweeters, Protection Grilles

Mounting Depth 47 mm, Mounting Hole 94 mm

SXE6.2W

16,5 cm (6.5") Kickbass Loudspeakers (Pair)

Power Rating 100 Watt/RMS, 200 Watt/max., 3 Ω, Sandpaper Cones

Frequency Range 60 - 5000 Hz, Protection Grilles, Mounting Depth 55 mm, Mounting Hole 144 mm

SXE6.2T

20 mm (0.75") Silk Dome Neodymium Tweeters (Pair)

Power Rating 100 Watt/RMS, 200 Watt/max. 4 Ω, 12 dB Cable Crossovers with -3 dB Attenuation

Frequency Range 3500 - 22000 Hz, Mounting Depth 17 mm, 4 Ω Mounting Hole 45 mm



HORIZON HZ

Component Loudspeakers

3Ω
Impedance

HZ6.2Cv2 **NEW**

16,5 cm (6.5") 2-Way Component System

Power Rating 100/200 Watt RMS/Max., 3 Ω

Polypropylen Cones, Protection Grilles

Frequency Range 55 - 22000 Hz

25 mm Silk Dome Tweeters

12 dB Cable Crossovers with
Tweeter Protection/Level Adjustment

Mounting Depth 61 mm, Mounting Hole 142 mm



HZ5.2C

13 cm (5.25") 2-Way Component System

Power Rating 80/160 Watt RMS/Max., 3 Ω

Polypropylen Cones, Protection Grilles

Frequency Range 62 - 22000 Hz

20 mm Silk Dome Tweeters

12 dB Cable Crossovers
with Tweeter Protection/Level Adjustment

Mounting Depth 58 mm, Mounting Hole 115 mm

HZ6.2W

16,5 cm (6.5") Kickbass Loudspeakers (Pair)

Power Rating 100/200 Watt RMS/Max., 3 Ω

Polypropylen Cones, Protection Grilles

Frequency Range 55 - 3000 Hz

Mounting Depth 61 mm, Mounting Hole 142 mm

HZ6.2T

25 mm (1") Silk Dome Tweeters (Pair)

Power Rating 100/200 Watt RMS/Max., 4 Ω

6 dB Cable Crossovers, Frequency Range 3500 - 22000 Hz

HORIZON HZ

Coaxial Loudspeakers

3Ω
Impedance

HZ62

16,5 cm (6.5") 2-Way Coaxial Loudspeakers (Pair)

Power Rating 90/180 Watt RMS/Max., 3 Ω

Polypropylen Cones, Protection Grilles

Frequency Range 55 - 22000 Hz, 20 mm Silk Dome Tweeters

Mounting Depth 61 mm, Mounting Hole 142 mm



HZ52

13 cm (5.25") 2-Way Coaxial Loudspeakers (Pair)

Power Rating 75/150 Watt RMS/Max., 4 Ω

Polypropylen Cones, Protection Grilles

Frequency Range 62 - 22000 Hz, 20 mm Silk Dome Tweeters

Mounting Depth 55 mm, Mounting Hole 115 mm



HZ42

10 cm (4") 2-Way Coaxial Loudspeakers (Pair)

Power Rating 50/100 Watt RMS/Max., 4 Ω

Polypropylen Cones, Protection Grilles

Frequency Range 70 - 22000 Hz, 20 mm Silk Dome Tweeters

Mounting Depth 51 mm, Mounting Hole 95 mm



HORIZON HZ

Coaxial/Triaxial Loudspeakers

HZ693

16 x 23 cm (6x9er) 3-Way Triaxial Loudspeakers (Pair)

Power Rating 125/250 Watt RMS/Max., 3 Ω

Polypropylen Cones, Protection Grilles

Frequency Range 46 - 22000 Hz

25 mm Silk Dome Mid Tweeter

20 mm Silk Dome Tweeters

Mounting Depth 89 mm, Mounting Hole 222 x 151 mm



3Ω
Impedance

HZ572

13 x 18 cm (5 x 7") 2-Way Coaxial Loudspeakers (Pair)

Power Rating 90/180 Watt RMS/Max., 3 Ω

Polypropylen Cones, Frequency Range 58 - 22000 Hz

20 mm Silk Dome Tweeters

Mounting Depth 60 mm, Mounting Hole 129 x 182 mm



HZ462

10 x 15 cm (4 x 6") 2-Way Coaxial Loudspeakers (Pair)

Power Rating 70/140 Watt RMS/Max., 3 Ω

Polypropylen Cones, Frequency Range 67 - 22000 Hz

20 mm Silk Dome Tweeters

Mounting Depth 49 mm, Mounting Hole 89 x 144 mm

HZ32

8,7 cm (3.5") 2-Way Coaxial Loudspeakers (Pair)

Power Rating 45/90 Watt RMS/Max., 3 Ω

Polypropylen Cones, Frequency Range 90 - 22000 Hz

20 mm Silk Dome Tweeters

Mounting Depth 42 mm, Mounting Hole 80 mm

ESX ACCESSORIES

Loudspeakers

KBW

Cable Crossover for Kickbass Loudspeakers (Pair)

6 dB LP @ 220 Hz @ 4 Ω

6 dB LP @ 110 Hz @ 2 Ω

250/500 Watt RMS/Max.



HTA

Tweeter Level Controller (Pair)

Tweeter Level Reduction in 3 steps: - 3 dB / - 6 dB / - 9 dB

100/200 Watt RMS/Max.



QE6.2T

25 mm (1") Silk Dome Neodymium Tweeters (Pair)

Power Rating 125/250 Watt RMS/Max., 4 Ω

Frequency Range 3300 - 25000 Hz, Aluminum Enclosure

12 dB Cable Crossovers

Mounting Depth 20 mm, Mounting Hole 47 mm



BTH25A

Bullet Tweeter Housing for 25 mm Tweeters (Pair)

Robust Aluminum Enclosure

Suitable for QE6.2T etc.



SOUND UPGRADES

AUTOMOTIVE SOUND REFINING



VISION VXB

Loudspeakers for BMW

- Suitable for all common BMW models
- Linear Frequency Range
- Chromed Pole Pieces
- Aluminium Cast Baskets
- Plug+Play Installation

VXB4.2C NEW

10 cm (4") 2-Way Component System

Power Rating 60/120 Watt RMS/Max., 4 Ω

Frequency Range 75 - 22000 Hz

10 cm Mid Speakers with Fiber Glass Cone

25 mm Silk Dome Neodymium Tweeters

2-Way Cable Crossovers

Not suitable for F15/F16 front door



VXB8.2W NEW

20 cm (8") Subwoofer (Pair)

Power Rating 180/300 Watt RMS/Max., 2 Ω

Frequency Range 30 - 300 Hz

50 mm (2") Voice Coil

Sandwich-Composite Membrane

Neodymium Magnet Driver

VXB8.3C NEW

3-Way Component System

Set contains **VXB4.2C** and **VXB8.2W**



made for
BMW
F/G + MINI F/R
esxaudio.de/bmw



VXB42 NEW

10 cm (4") 2-Way Coaxial Loudspeakers (Pair)

Power Rating 60/120 Watt RMS/Max., 4 Ω

Frequency Range 75 - 22000 Hz

10 cm Mid Speakers with Fiber Glass Cone

20 mm Silk Dome Neodymium Tweeters

Not suitable for F15/F16 front door



DW5BMW

2 x 5 meters Speaker Connection Set for BMW

Suitable for all BMW E/F/G models with "HIFI" or "STEREO" sound system (with underseat subwoofers and without original amplifier)

The set is required to control the underseat subwoofers and the broadband or mid/high speakers separately from each other with a separate amplifier in the BMW "HIFI" or "STEREO" sound system without OEM amplifier.

VISION VS

Subwoofer for BMW

- Suitable for all common BMW models
- Neodymium Magnet Drivers with 2 Ω
- Plug+Play Installation

VS200WX

20 cm (8") Subwoofer (Pair)
180 Watt/RMS, 300 Watt/MAX
Impedance 2 Ω
Frequency Range 30 - 300 Hz
Fiber Glass Cone
Neodymium Magnet Driver



SIGNUM SXB

Loudspeakers for BMW

- Suitable for all common BMW models
- Hand scooped Paper Cones
- Plug+Play Installation

SXB8.3C NEW

3-Way Component System
Set contains **SXB4.2C** and **SXB8.2W**

SXB4.2C NEW

10 cm (4") 2-Way Component System
Power Rating 60/120 Watt RMS/Max., 4 Ω
Frequency Range 75 - 22000 Hz
10 cm Mid Speakers
25 mm Silk Dome Neodymium Tweeters
2-Way Cable Crossovers
Not suitable for F15/F16 front door

SXB8.2W NEW

20 cm (8") Subwoofer (Pair)
Power Rating 100/200 Watt RMS/Max., 4 Ω
Frequency Range 30 - 300 Hz
38 mm (1.5") Voice Coil
Neodymium Magnet Driver

SXB42 NEW

10 cm (4") 2-Way Coaxial Loudspeakers (Pair)
Power Rating 60/120 Watt RMS/Max., 4 Ω
Frequency Range 75 - 22000 Hz
10 cm Mid Speakers
20 mm Silk Dome Neodymium Tweeters
Not suitable for F15/F16 front door



made for
BMW
F / G + MINI F / R
esxaudio.de/bmw

SOUND UPGRADE

Vehicle-specific Sound Systems

QXF6.2C **NEW**

16 cm (6") 2-Way Component System

Power Rating 90/180 Watt RMS/Max., 3 Ω

Frequency Range 50 - 24000 Hz

160 mm Midbass Speaker with paper Cone

25 mm Aluminum Tweeters

6 dB Cable Crossovers

Mounting Hole 155 mm

Mounting Depth 51 mm

Plug+Play Installation

Suitable for:

- Fiat Ducato III/IV · Citroën Jumper II/III · Peugeot Boxer II/III (since 2006)
- Fiat Ducato V (since 2021) · Ford Ka II (2009-2016)



DCS165

16,5 cm (6.5") 2-Way Component System

Power Rating 90/180 Watt RMS/Max., 3 Ω

Frequency Range 56 - 22000 Hz

165 mm Midbass Speaker with Polypropylen Cone

25 mm Silk Dome Tweeters

12 dB Cable Crossovers

Includes Adapter rings and Wiring

Mounting Depth 60 mm

Mounting Hole 143 mm

Suitable for:

- Fiat Ducato III/IV · Citroën Jumper II/III · Peugeot Boxer II/III (since 2006)
- Fiat Ducato V (since 2021) · Ford Ka II (2009-2016)

Q-W124 **NEW**

Sound-Upgrade for Mercedes-Benz W124 Models

Set contains **QS-TWO-ISO** Nano Amplifier and **QXE120** Coaxial Loudspeakers, incl. ISO Harness and Loudspeaker Adapters



HORIZON HXP

All-In-One Bass Packs

HXP2

2-Channel Bass Pack, 440 W/Max., SPL up to 141 dB

HXE110.2

2 x 140/220 W/Max. @ 4/2 Ω
2 x 70/110 W/RMS @ 4/2 Ω
1 x 440 W/Max. @ 4 Ω bridged
HPF 10-250 Hz, LPF 50-250 Hz
Bass Boost 0-12 dB, Bandpass Function
RCA/Cinch In- & Outputs
Dimensions: 220 x 51 x 262 mm

HXB300

30 cm (12") Bassreflex System
Power Rating 350/700 Watt RMS/Max.
Impedance 4 Ω , Poly Chrome Cone
Dimensions: 40 x 38 x 38/28 cm

HXK102WK

10 cm² Amplifier Installation Kit incl. Power Cable (5 m),
Ground Cable (1 m), RCA Stereo Audio Cable with Remote Wire (5 m),
Fuse, Fuse Holder, Installation Accessories etc.



HXP4

4-Channel Bass Pack, 800 W/Max., SPL up to 140 dB

HXE100.4

4 x 120/200 W/Max. @ 4/2 Ω
4 x 60/100 W/RMS @ 4/2 Ω
1 x 440 W/Max. @ 4 Ω bridged
2 x Highpass 10-250 Hz, Lowpass 50-250 Hz
Bass Boost 0-12 dB, Bandpass Function
RCA/Cinch In- & Outputs
Dimensions: 220 x 51 x 342 mm

HXB300

30 cm (12") Bassreflex System
Power Rating 350/700 Watt RMS/Max.
Impedance 4 Ω , Poly Chrome Cone
Dimensions: 40 x 38 x 38/28 cm

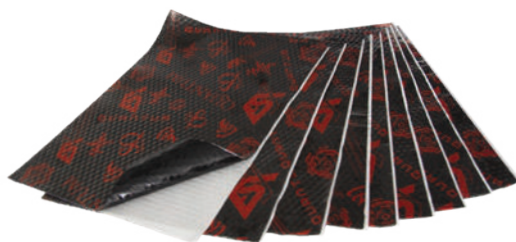
HXK104WK

10 cm² Amplifier Installation Kit incl. Power Cable (5 m),
Ground Cable (1 m), RCA Stereo Audio Cable with Remote Wire (5 m),
2 x Y-Adapter, Fuse, Fuse Holder, Installation Accessories etc.



QUANTUM SOUND DAMPING

Sound improvement through professional insulation



QRM30S NEW

Quantum Razor Mat

Aluminium-Butyl, self-adhesive
3,0 mm thickness, MLF = 0,5
9 Mats à 700 x 500 mm (3,15 sqm)



QRM22 NEW

Quantum Razor Mat

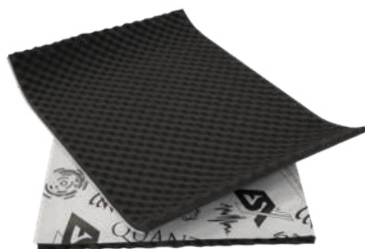
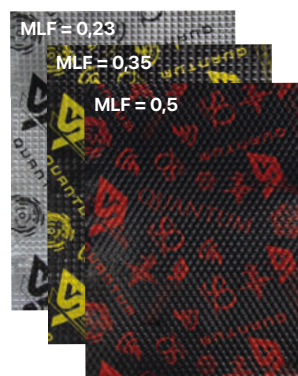
Aluminium-Butyl, self-adhesive
2,2 mm thickness, MLF = 0,35
11 Mats à 700 x 500 mm (3,85 sqm)



QRM18 NEW

Quantum Razor Mat

Aluminium-Butyl, self-adhesive
1,8 mm thickness, MLF = 0,23
12 Mats à 700 x 500 mm (4,2 sqm)



QSC15 NEW

Quantum Acoustic Foam

Flat structure, self-adhesive
15,0 mm thickness, compressible up to 2 mm
10 Mats à 700 x 500 mm (3,5 sqm)



QSC7 NEW

Quantum Acoustic Foam

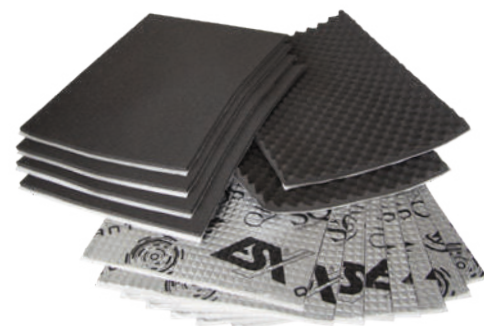
Flat structure, self-adhesive
7,0 mm thickness, compressible up to 2 mm
10 Mats à 700 x 500 mm (3,5 sqm)



QST6-11 NEW

Quantum Butyl Round Cord, self-adhesive

6,0 mm thickness, 11 m length



QDK1 NEW

Quantum Door Kit 1 for damping of two vehicle doors

8 x Aluminum Butyl Mats QRM18, format 500 x 370 mm, thickness 1,8 mm, MLF 0,23
4 x Acoustic Foam QSC7, flat structure, format 500 x 370 mm, thickness 7,0 mm
2 x Acoustic Foam QSC15, nubbled structure, format 500 x 370 mm, thickness 15,0 mm



QDK2 NEW

Quantum Door Kit 2 for damping of two vehicle doors

8 x Aluminum Butyl Mats QRM20S, format 500 x 370 mm, thickness 2,0 mm, MLF 0,4
4 x Acoustic Foam QSC7, flat structure, format 500 x 370 mm, thickness 7,0 mm
2 x Acoustic Foam QSC15, nubbled structure, format 500 x 370 mm, thickness 15,0 mm



DIRECTION DC

Digital Power Caps

DC1500

1.5 Farad Power Capacitor with integrated Distribution Block

Operating voltage 12 - 16 V DC
 Operating temperature -20 ~ 60 ° C
 Digital voltmeter with 4 digits
 Auto turn-on function
 Sturdy acrylic holders
 Dimensions: Ø 7,4 cm x 24,5 cm

Distribution Block:

1 x Plus 25 mm² IN / 3 x 25 mm² OUT
 1 x Minus 25 mm² IN / 1 x 25 mm² OUT



DC500

0.5 Farad Power Capacitor with integrated Distribution Block

Operating voltage 12 - 15 V DC
 Operating temperature -20 ~ 60 ° C
 Digital voltmeter with 3 digits
 Connection for remote turn-on
 Sturdy acrylic holders
 Dimensions: Ø 6,5 x 13,6 cm

Distribution Block:

1 x Plus 16 mm² IN / 2 x 10 mm² OUT
 1 x Minus 16 mm² IN / 2 x 10 mm² OUT

ESX ACCESSORIES

Amplifier Modules for Subwoofer Enclosures

POWER4 NEW

POWER2 NEW

Class D Amplifier Modules for Subwoofer Enclosures, exactly suitable for all ESX QSB and DBX Subwoofer Systems

1 x 460 W/RMS @ 4 Ω or
 1 x 245/475 W/RMS @ 4/2 Ω
 Lowpass 40 ~ 120 Hz @ 12 dB
 Phase Switch 0° / 180°
 Bass Boost 0 ~ 6 dB @ 45 Hz
 RCA Inputs, High Level Inputs
 Integrated Limiter with 3-Way Switch
 EPS Pro Switch 10R / 150R / 600R
 Auto Turn-On
 Bass Level Remote Controller
 Dimensions 113 x 130 x 125 mm



**2- OR 4-Ω VERSION -
 SUITABLE FOR ALL QSB AND DBX
 SUBWOOFER SYSTEMS**



SUB-D300

Class D Amplifier Module with Aluminium Heat Sink for Subwoofer Enclosures

1 x 200 W/RMS @ 4 Ω, 1 x 300 W/RMS @ 2 Ω
 Lowpass 50-150 Hz @ 12/18dB, Bass Boost 0-12 dB @ 45 Hz, Subsonic 15 Hz fixed
 Phase Switch 0° / 180°, High Level Inputs, RCA Inputs
 Auto Turn-On, Bass Level Remote Controller
 Dimensions: 194 x 53 x 145 mm

ESX ACCESSORIES

Amplifier Connection

DLC44 NEW

4-Channel Line Converter with EPS PRO

Infinitely regulated symmetrical HD power supply
 High input up to 400 watts (40 V/RMS) per channel
 Input voltage switchable 1-15 V / 15-40 V
 4-Channel RCA Low Output up to 9 V/RMS
 Frequency response 5 Hz - 57 kHz (+0 dB, -1 dB)
 EPS PRO (switchable) 10 Ω - 150 Ω - 600 Ω
 Auto Turn On (DC Offset / Signal / Vox) adjustable
 Generates 12 V Remote Output, 2 x Clipping LED
 Floating Ground Jumper
 Dimensions: 100 x 28 x 140 mm



DLC22 NEW

2-Channel Line Converter with EPS PRO

Infinitely regulated symmetrical HD Power Supply
 High input up to 400 watts (40 V/RMS) per channel
 Input voltage switchable 1-15 V / 15-40 V
 2-Channel RCA Low Output up to 9 V/RMS
 Frequency response 5 Hz - 57 kHz (+0 dB, -1 dB)
 EPS PRO (switchable) 10 Ω - 150 Ω - 600 Ω
 Auto Turn On (DC Offset / Signal / Vox) adjustable
 Generates 12 V Remote Output, Clipping LED
 Floating Ground Jumper
 Dimensions: 100 x 28 x 110 mm



HLC4

4-Channel Line Converter with EPS

Generates Remote Output
 Operation Voltage 10-16 V
 Signal to Noise Ratio > 95 dB
 Channel Separation 80 dB
 Slew rate 9V/μS
 Transmission Frequency 5 Hz - 60 KHz (+/-1 dB)
 Bias Current (< 10 mA @ 14,4 V)
 RCA Output (unbalanced) 2,36 V/RMS
 Auto Turn-On
 Dimensions: 62 x 70 x 21 mm



SXBLT4

Balanced Line Transmitter for 2 x 2 Channels (stereo)

Line Converter for interference-free signal transmission to the Amplifier
 4 x RCA to 2 x 6-pin Mini-DIN, 2 x Level Control, 2 x Connection Cable, 5 m

SXBLT2

Balanced Line Transmitter for 2 Channels (stereo)

Line Converter for interference-free signal transmission to the Amplifier
 2 x RCA to 2 x 6-pin Mini-DIN, Level Control, Connection Cable, 5 m



ESX ACCESSORIES

Amplifier Connection

DWK16

16 mm² Amplifier Connection Kit
Highly Conductive Solid Copper (99,9% OFC)

1 x 16 mm² Power Cable (yellow), 5 m
 1 x 16 mm² Ground Cable (black), 1 m
 Mini-ANL/AFS Fuse Holder
 Fuses: 2 x 80 A, 2 x 100 A



DWK10

10 mm² Amplifier Connection Kit
Highly Conductive Solid Copper (99,9% OFC)

1 x 10 mm² Power Cable (yellow), 5 m
 1 x 10 mm² Ground Cable (black), 1 m
 Mini-ANL/AFS Fuse Holder
 Fuses: 2 x 40 A, 2 x 60 A

DWK6

6 mm² Amplifier Connection Kit
Highly Conductive Solid Copper (99,9% OFC)

1 x 6 mm² Power Cable (yellow), 5 m
 1 x 6 mm² Ground Cable (black), 1 m
 ATC Fuse Holder (already integrated in the Power Cable)
 Fuses: 2 x 20 A, 2 x 30 A, 2 x 40 A



DSC5

RCA Stereo Patch Cord, 5 Meters
Highly Conductive Solid Copper (99,9% OFC)

RCA Stereo Patch Cord (black)
 Double-shielded
 Gold plated connectors
 Black metal housings
 incl. Remote Wire, 5 m

DSC3

RCA Stereo Patch Cord, 3 Meters
Highly Conductive Solid Copper (99,9% OFC)

RCA Stereo Patch Cord (black)
 Double-shielded
 Gold plated connectors
 Black metal housings
 incl. Remote Wire, 3 m

DSC1

RCA Stereo Patch Cord, 1 Meter
Highly Conductive Solid Copper (99,9% OFC)

RCA Stereo Patch Cord (black)
 Double-shielded
 Gold plated connectors
 Black metal housings
 incl. Remote Wire, 1 m



ESX ZUBEHÖR

Amplifier Connection

HZ35WK

35 mm² Amplifier Connection Kit

- 1 x 35 mm² Power Cable (red), 5 m
- 1 x 35 mm² Ground Cable (silver), 0,8 m
- 1 x RCA Stereo Patch Cord (black)
- 1 x 0,5 mm² Remote Wire, 5 m
- 1 x ANL Fuse Holder with 150 A ANL Fuse

HZ20WK

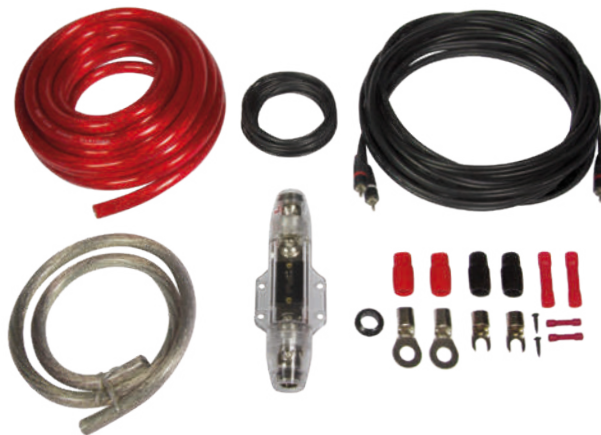
20 mm² Amplifier Connection Kit

- 1 x 20 mm² Power Cable (red), 5 m
- 1 x 20 mm² Ground Cable (silver), 0,8 m
- 1 x RCA Stereo Patch Cord (black)
- 1 x 0,5 mm² Remote Wire, 5 m
- 1 x Mini-ANL/AFS Fuse Holder with 60 A Fuse

HZ10WK

10 mm² Amplifier Connection Kit

- 1 x 10 mm² Power Cable (red), 5 m
- 1 x 10 mm² Ground Cable (silver), 0,8 m
- 1 x RCA Stereo Patch Cord (black)
- 1 x 0,5 mm² Remote Wire, 5 m
- 1 x Mini-ANL/AFS Fuse Holder with 40 A Fuse



DFH-WP-ANL

Water Proof Mini-ANL/ATC Fuse Holder for Cross Sections up to 25 mm²

- Incl. Mini-ANL Fuses 1 x 30A / 1 x 60A
- Hexagon Socket Wrench



DFH-WP-ATC

Water Proof ATC Fuse Holder for Cross Sections up to 10 mm²

- For 1 or 2 ATC Fuses
- Incl. ATC Fuses 1 x 30A / 1 x 40A
- Hexagon Socket Wrench
- 2 seals for 6 mm² or 10 mm²

ESXFH1

High quality Mini-ANL/AFS Fuse Holder for Cross Sections up to 20 mm²



DFH-ANL

Mini-ANL/ANL modular Fuse Holder for Cross Sections up to 40 mm²

- Multifunctional Fuse Holder
- For Mini-ANL or ANL Fuses
- Cross Sections up to 40 mm² incl. 20 mm² Adapter
- Patented modular plug-in system



ESXFUSE

Mini-ANL Fuses

- ESXFUSE30** 30 A, 1 Pair
- ESXFUSE40** 40 A, 1 Pair
- ESXFUSE50** 50 A, 1 Pair
- ESXFUSE60** 60 A, 1 Pair
- ESXFUSE70** 70 A, 1 Pair
- ESXFUSE80** 80 A, 1 Pair
- ESXFUSE100** 100 A, 1 Pair
- ESXFUSE120** 120 A, 1 Pair



CAR AUDIO SYSTEMS



ESX ist eine Marke der Audio Design GmbH
Am Breillingsweg 3 · D-76709 Kronau/Germany
Tel. +49 7253 - 9465-0 · Fax +49 7253 - 946510
www.esxaudio.de - www.audiodesign.de

© Audio Design GmbH, alle Rechte vorbehalten. Technische Änderungen, Irrtum und Fehler vorbehalten.