

Mission Possible - Your Magnificent Brain

**Your mission is to create a 3D clay, labeled model of the brain.
This information is needed to understand and defeat the other side.**

- *Make your salt dough (if needed) according to directions.
- *You may add food coloring to show contrast between the different parts/lobes.

INGREDIENTS

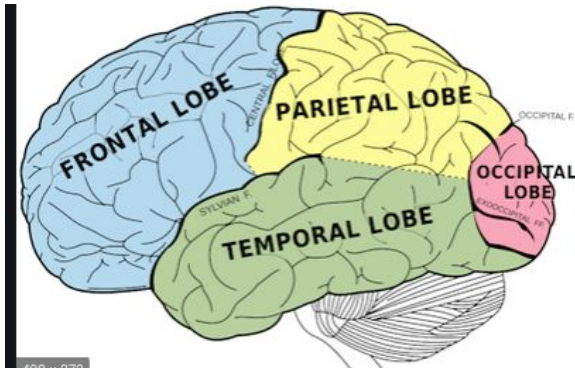
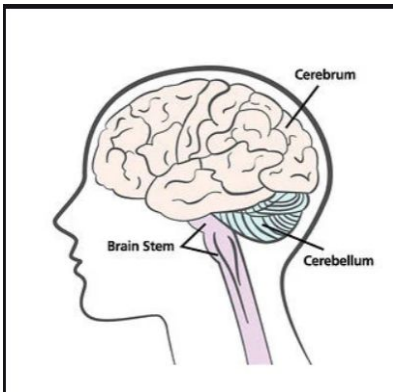
4 cups flour

1 cup table salt

1.5 cups water

INSTRUCTIONS

- *Mix the ingredients together in a large bowl using a wooden spoon.
- *When it becomes too stiff to stir, use clean hands to bring the dough together.
- *Knead a few times until the dough is uniform and soft for about 3 - 5 minutes.
- *Separate and add different food coloring as needed.
- *Shape and create you the parts of the brain and then join them together.
- *Add your labels.
- *Once your project is completed, let it air dry until hardened.



****Once your 3D labeled model is completed, please send photographic evidence to Ms Powe, aka Cerebrum, for Mission assessment.***

powel@gcsd.us

****Please go to the following link to take your spy quiz***

<https://quizizz.com/join/quiz/5eb1aaec685e29001e307a56/start?from=soloLinkShare&referrer=5eb1a61c685e29001e307632>

Your mission will then be accomplished.