

***Cymodoce convexa* Miers, 1876 (Fig. 38)**

*Cymodocea convexa* Miers, 1876b: 114-15, pl. 3 fig. 6; 1876a: 229. Filhol, 1885: 457.  
*Cymodoce convexa*. Nierstrasz, 1931: 201. Hurley, 1961: 270.

**DIAGNOSIS**

*Cymodoce* without processes on pleonite 1 or pleotelson. Pleotelson has four obscure tubercles in transverse series. Uropods short, rami subequal.

TYPE LOCALITY: New Zealand.

MATERIAL EXAMINED

New Zealand: [156] 3 spp. (cotypes).

REMARKS: The dry specimens on which Miers based his original descriptions were examined, and an 8 mm female suitably restored forms the basis of the illustrations.

Since these are female specimens, it is possible that

the male may have processes on pleonite 1 or pleotelson.

***Cymodoce granulata* (Fig. 39)**

*Cymodocea granulata* Miers, 1876b: 114, pl. 3 fig. 5; 1876a: 229. Filhol, 1885: 457, pl. 55, fig. 4.  
*Cymodoce granulata*. Nierstrasz, 1931: 201. Hurley, 1961: 270.

**DIAGNOSIS**

*Cymodoce* without processes on pleonite 1 or pleotelson. Pleotelson with one obscure median tubercle. Uropod outer ramus nearly twice length of inner.

TYPE LOCALITY: New Zealand.

MATERIAL EXAMINED

New Zealand: [157] 1 ♂ (12 mm).

REMARKS: The illustrations are of Miers' type in the British Museum (*Cymodoce granulata*, Type NZ 50-53).

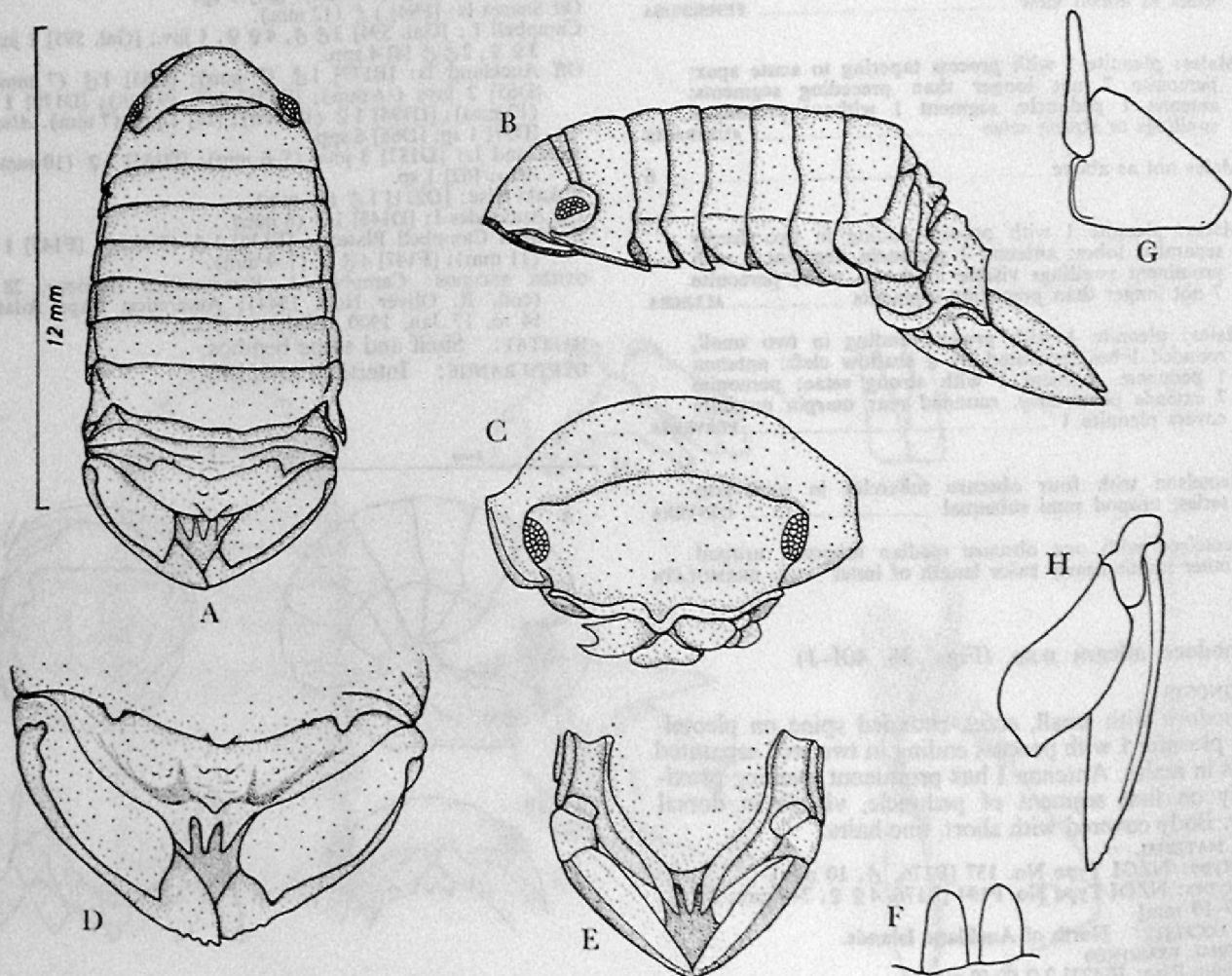


FIG. 39. *Cymodoce granulata* Miers, mature ♂: A, whole animal; B, side view; C, head, frontal view showing epistome and frontal margin; D, pleotelson, dorsal view; E, pleotelson, ventral view; F, penes; G, pleopod 2, inner ramus (without setae); H, uropod.

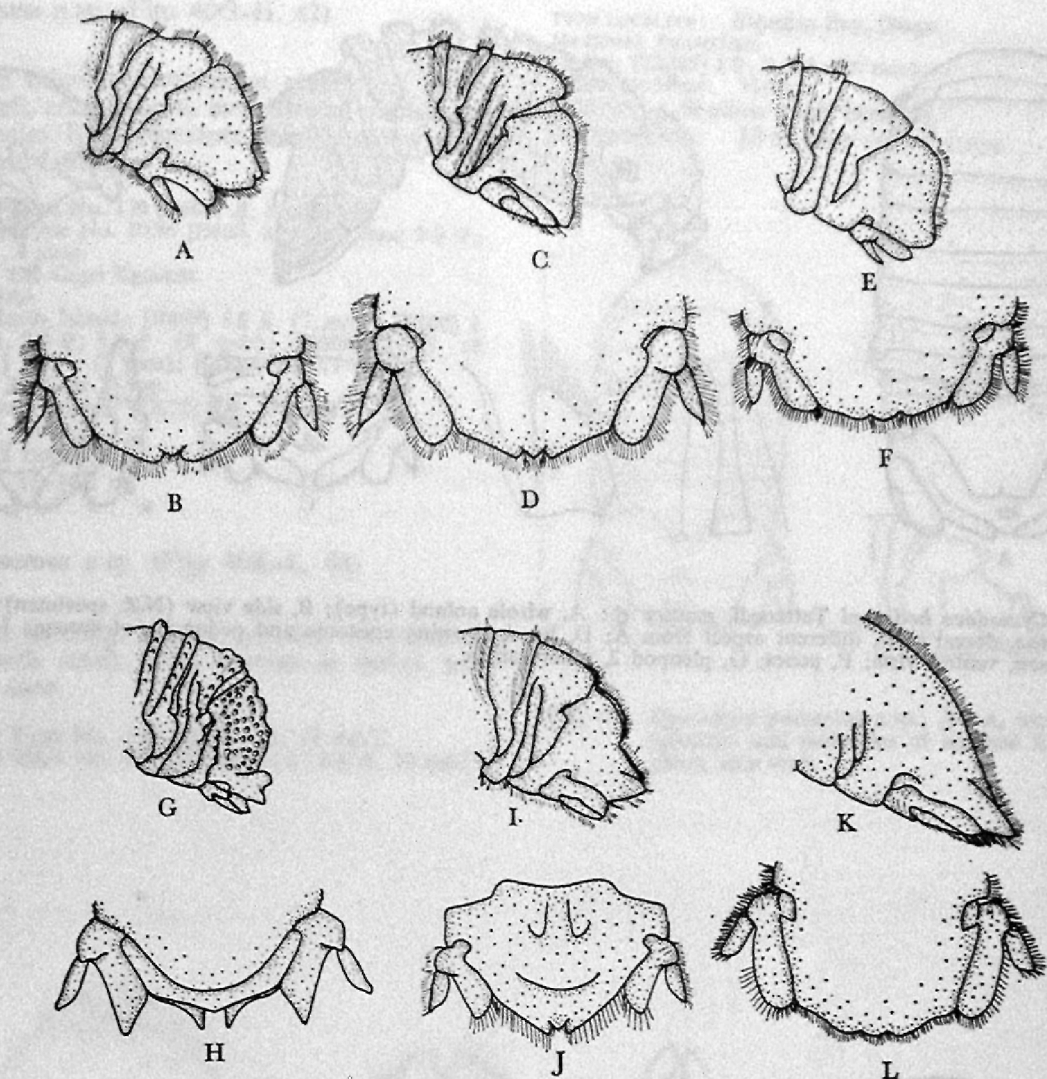


FIG. 40. *Cymodoce* spp. ♀♀, dorsal and side views of pleon: A, B, *perversa* n.n.; C, D, *australis* Hodgson; E, F, *hodgsoni* Tattersall; G, H, *iocosa* n.sp.; I, J, *allegra* n.sp.; K, L, *penserosa* n.sp. (reconstruction from damaged specimen).

***Cymodoce hodgsoni* Tattersall, 1921 (Figs 40E-F, 41)**

*Cymodoce hodgsoni* Tattersall, 1921: 219-21, pl. 6, figs 1-8.  
Nierstrasz, 1931: 201. Hurley, 1961: 270.

**DIAGNOSIS**

*Cymodoce* with small, erect median process on pleotelson in males, process trilobed in dorsal view. Pleonite 1 in males has broad process, truncated in dorsal view, bilobed in posterior view. Body more or less covered with fine setae.

**TYPE LOCALITY:** Off North Cape.

**MATERIAL EXAMINED**

Off North Cape: [TN Sta. 96] 1 ♂ (9 mm).  
Off Little Barrier I: [Cop. 7] spp.  
Off Kawhia: [B664] 4 ♀♀ (5-6 mm), 2 ♂♂ (6 mm).  
Hauraki Gulf: [Cop. 8] spp.  
Off Marlborough Sounds: [41] 1 ♀ (10 mm), 4 ♂♂ (10-12 mm).

**OTHER RECORDS:** None.

**HABITAT:** Shelf benthos.

**DEPTH RANGE:** 30-126 m.

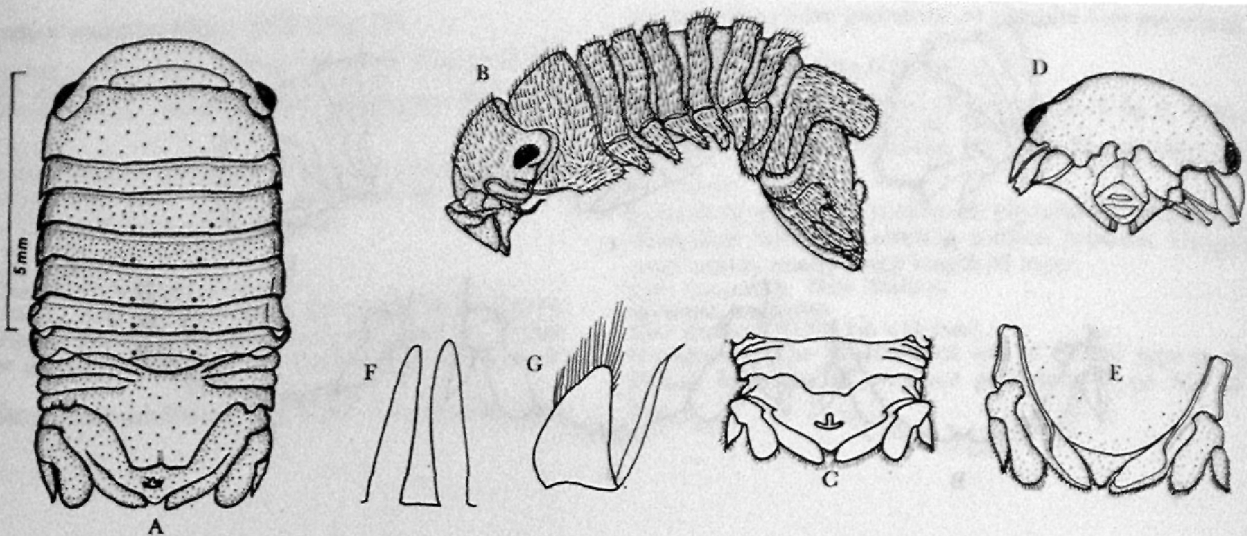


FIG. 41. *Cymodoce hodgsoni* Tattersall, mature ♂: A, whole animal (type); B, side view (N.Z. specimen); C, pleotelson, dorsal view, different aspect from A; D, head, showing epistome and peduncles of antenna I; E, pleotelson, ventral view; F, penes; G, pleopod 2, inner ramus.

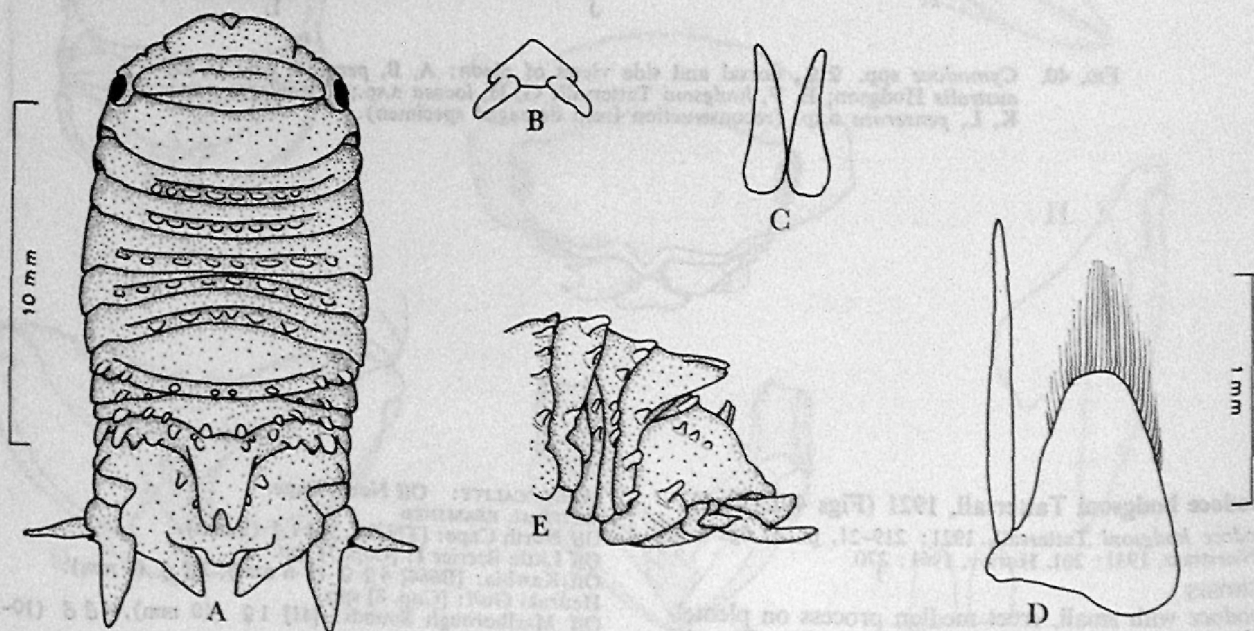


FIG. 42. *Cymodoce iocosa* n.sp., mature ♂: A, whole animal; B, epistome; C, penes; D, pleopod 2, inner ramus; E, pleon, side view.

*Cymodoce iocosa* n.sp. (Figs 40G-H, 42)

DIAGNOSIS

*Cymodoce* with bifurcate process on pleonite 1; pleotelson with small, erect process each side of midline of pleotelson in males. Body segments strongly tuberculate in both males and females.

TYPE MATERIAL

Holotype: NZOI Type No. 139 [B660, ♂, 8 mm].

Paratypes: NZOI Type No. P196 [B660, 2 juvs, 7 mm; 2 ♀ ♀, 8 mm; 2 ♂ ♂, 8 mm].

TYPE LOCALITY: Off Cape Egmont.

MATERIAL EXAMINED

Off west coast North Island: [B669] 3 ♀ ♀ (7 mm); [B660] 2 juvs (7 mm), 2 ♀ ♀, 3 ♂ ♂ (8 mm); [B686] 2 ♂ ♂ (8 mm); [C171] 1 juv. (7 mm); [C186] 1 ♀ (7 mm).

Off Little Barrier I: [Cop. 7] spp.

Off east coast South Island: [C672] 1 ♀ (7 mm).

OTHER RECORDS: None.

HABITAT: Shelf benthos.

DEPTH RANGE: 37-163 m.

*Cymodoce penserosa* n.sp. (Figs 40K-L, 43)

DIAGNOSIS

*Cymodoce* with tapering, bilobed process on pleonite 1; pleotelson with small, erect process in males, trilobed in dorsal view.

TYPE MATERIAL

Holotype: NZOI Type No. 138 [Z2285, ♂, 10 mm].

Paratypes: NZOI Type No. P195 [Z2285, 1 ♀, 2 ♂ ♂, 10 mm].

TYPE LOCALITY: Blueskin Bay, Otago.

MATERIAL EXAMINED

Otago: [Z2285] 1 ♀, 3 ♂ ♂ (10 mm).

OTHER RECORDS: None.

HABITAT: Shallow shelf benthos.

DEPTH RANGE: 20 m (one record only).

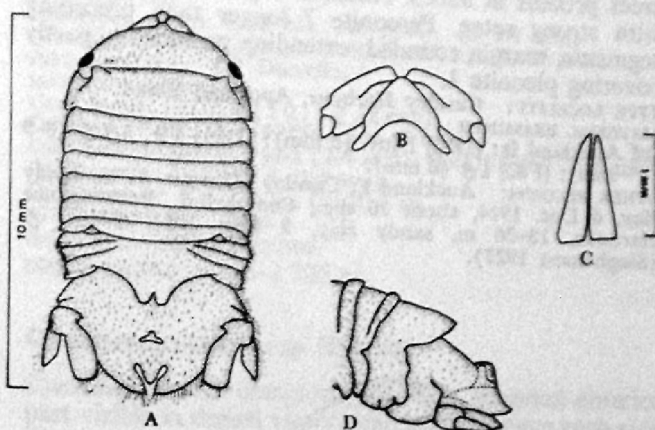


FIG. 43. *Cymodoce penserosa* n.sp., ♂: A, whole animal; B, epistome and peduncles of antenna I; C, penes; D, pleon, side view.

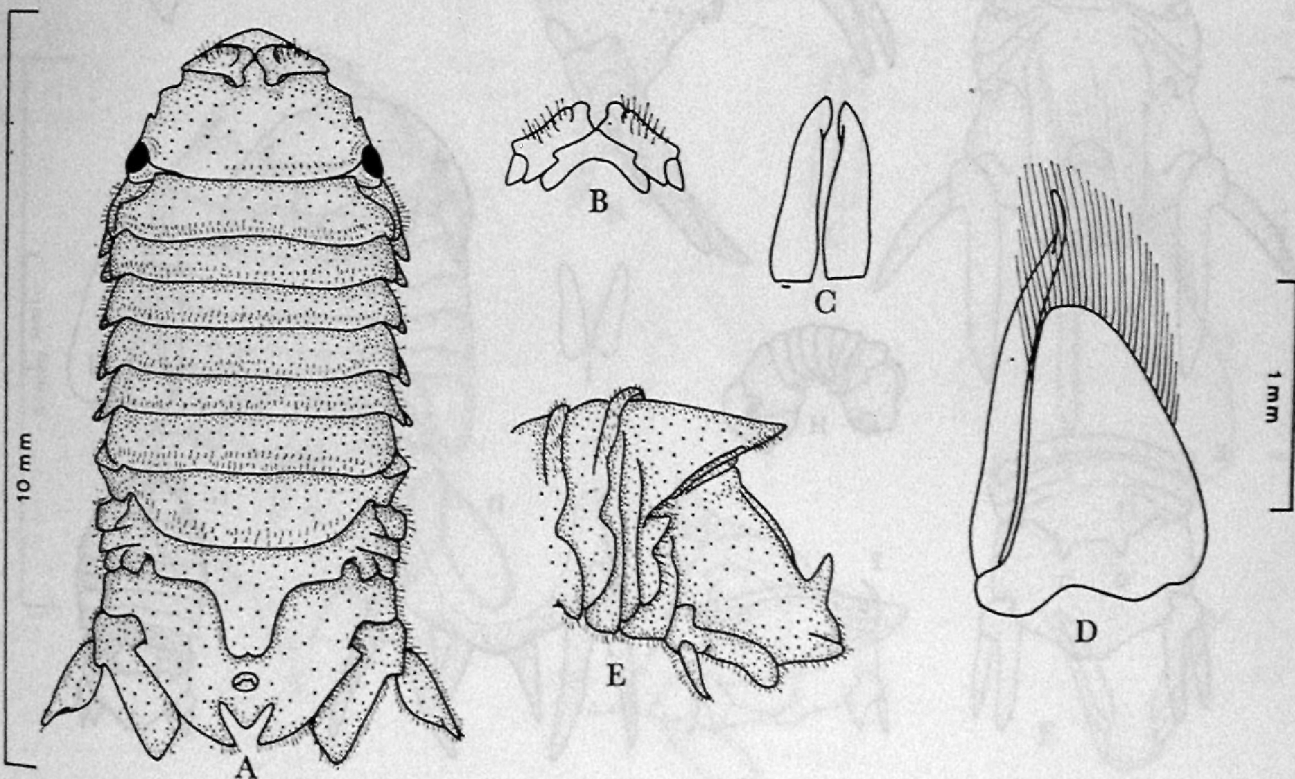


FIG. 44. *Cymodoce perversa* n.n., mature ♂: A, whole animal; B, epistome and peduncles of antenna I; C, penes; D, pleopod 2, inner ramus; E, pleon, side view.

***Cymodoce perversa* n.n. (Figs 40A-B, 44)**

*Cilicæa hamata* Stephensen, 1927: 366-8, figs 27-28. Nierstrasz, 1931: 206.

**DIAGNOSIS**

*Cymodoce* with pleonite 1 process in males ending posteriorly in two small, rounded lobes separated by a shallow cleft. Pleotelson with small, single, rounded, erect process in males. Antenna 1 peduncle, segment 1 with strong setae. Pereonite 7 longer than preceding segments, margin rounded, extending posteriorly, partly covering pleonite 1.

TYPE LOCALITY: Carnley Harbour, Auckland Island.

**MATERIAL EXAMINED**

Off Auckland Is: [D54] 1 juv. (6 mm); [D83] 1 ♀, 3 ♂♂ (8-9 mm); [F82] 1 ♂ (6 mm).

OTHER RECORDS: Auckland I., Carnley Harbour, 81 m, sandy clay, 6 Dec. 1914, about 70 spp.; Campbell I., Perseverance Harbour, 18-36 m, sandy clay, 9 Dec. 1914, 1 juv ♂ (Stephensen 1927).

HABITAT: Sublittoral and shelf benthos.

DEPTH RANGE: 18-150 m.

REMARKS: This species was originally placed in *Cilicæa* by Stephensen (1927), but it is excluded from *Cilicæa* by the fully developed inner ramus of the uropod. Although synonymised with *Cymodoce australis* by later authors (e.g. Monod, 1931b: 24) it is here considered as a distinct species, very close to *C. australis*. Since Monod gives no description, it is difficult to be sure whether his specimens were *australis* or *perversa*, but it seems most likely that they were *perversa*.

Baker (1908: 141) described a new species, *Cymodoce hamata*, from Australia. Although Baker's species is at present placed in *Paracilicæa*, the possibility of confusion with Stephensen's *Cilicæa hamata*, now transferred to *Cymodoce*, is so great that a new name is required for Stephensen's species.

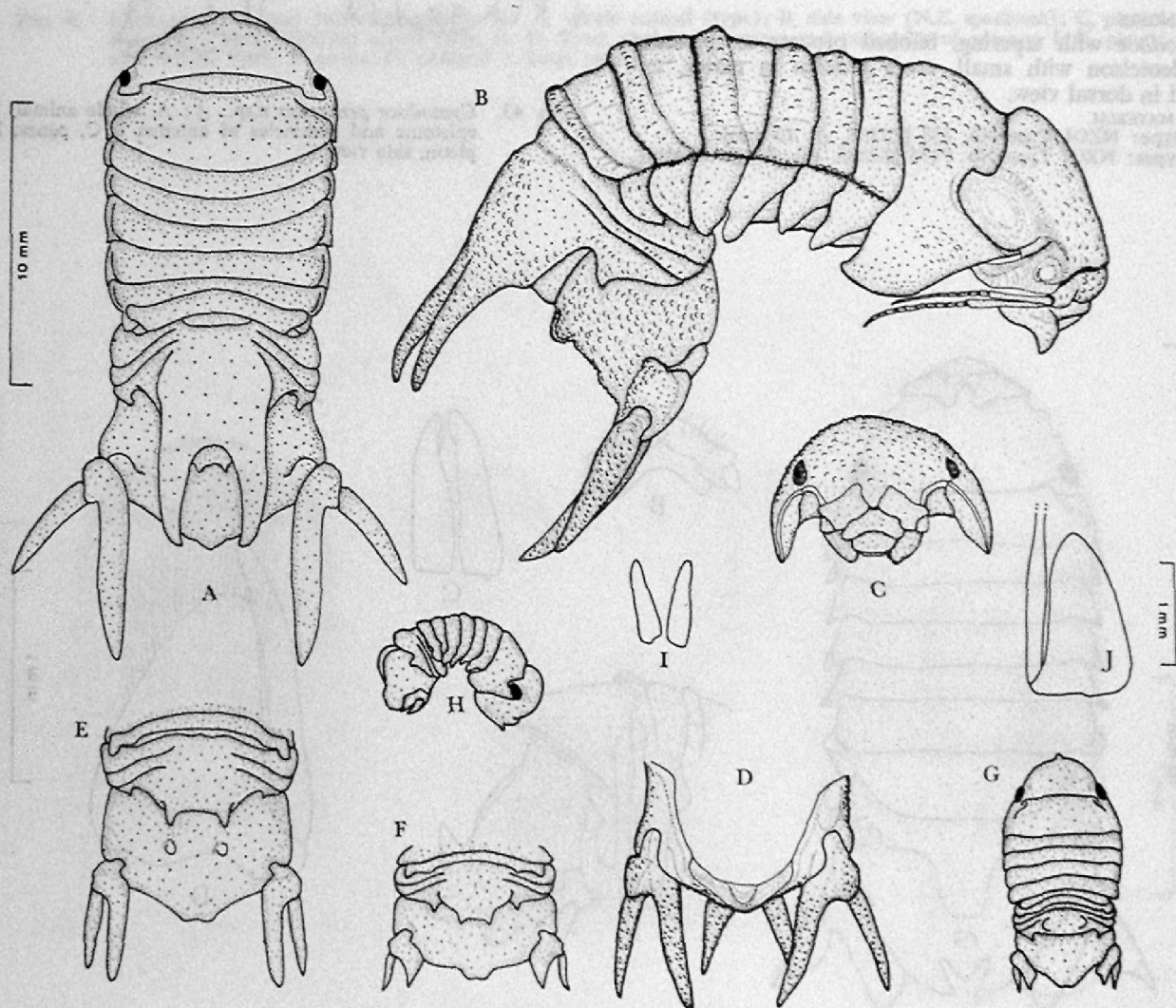


FIG. 45. *Cymodopsis impudica* n.sp., mature ♂ except E, F (immature ♂♂) and G, H (♀): A, whole animal; B, side view; C, head, frontal view showing epistome and peduncles of antenna I; D, pleotelson, ventral view; E, F, pleon, dorsal view; G, whole animal, dorsal view; H, side view; I, penes; J, pleopod 2, inner ramus.

**Cymodopsis Baker, 1926**

*Cymodopsis* Baker, 1926: 264.

TYPE-SPECIES: *Cymodopsis latifrons* (Whitelegge).

**DIAGNOSIS**

Hemibranchiate Sphaeromatidae with narrow or rounded notch before and beneath pleotelson apex, the notch undivided by a median process. Pleopod 3 outer ramus 2-segmented. Mature males, pleopod 2 inner ramus with well developed appendix masculina. Uropods variable, rami subequal or outer ramus reduced or modified.

**KEY TO NEW ZEALAND AND SUBANTARCTIC SPECIES OF CYMODOPSIS**

1. Males: pleonite 1 with prominent, bifurcate process; pleotelson with small, acute, conical tubercle each side of midline; uropod rami rounded in cross-section, outer about half length of inner ..... **IMPUDICA**

Males: pleonite 1 without bifurcate process; uropod rami flattened ..... 2

2. Body flattened, smooth; pleotelson apex produced over circular foramen; pleonite 1 with small tubercle on rear margin each side of midline; pleotelson with low ridge each side of midline ..... **MONTIS**

Body deep; pleotelson apex more or less produced over long, narrow notch; males, pleonite 1 produced medially into rounded process ..... 3

3. Body strongly tuberculate, head and anterior pereonites with prominent, transverse ridges; epistome long, prominent; pleotelson apex extending beyond notch ..... **SPHYRACEPHALATA**

Body, smooth; epistome short; pleotelson apex rising nearly vertically above notch ..... **TORMINOSA**

***Cymodopsis impudica* n.sp. (Fig. 45)**

**DIAGNOSIS**

*Cymodopsis* with prominent bifurcated process on pleonite 1 in adult males. Pleotelson with small, acute, conical process each side of midline and shallow, vertical, apical notch. Uropod rami in adult males rounded in cross-section, flatter in females and young males.

**TYPE MATERIAL**

Holotype: NZOI Type No. 140 [E401, ♂, 9.5 mm].

Paratypes: NZOI Type No. P197 [E417, 2♂♂, 5.5 mm].

TYPE LOCALITY: Off Dunedin.

**MATERIAL EXAMINED**

Cook Strait: [VUZ 83] 1♀, 1♂ (8 mm).

Off Banks Peninsula: [F753] 4 juvs (5 mm).

Off Oamaru: [E416] 7 juvs (3-4 mm); [E417] 2♂♂ (5.5 mm).

Off Dunedin: [E401] 1♂ (9.5 mm).

Off Snares Is: [D134] 1 sp; [F104] 1 sp.

OTHER RECORDS: None.

HABITAT: Slope benthos.

DEPTH RANGE: 425-1 225 m.

***Cymodopsis montis* n.sp. (Fig. 46)**

*Cymodopsis* with elongated epistome, rounded anterior part visible in dorsal view; small protuberance each side of forehead. Coxal plates vertical, the 6th produced posteriorly overlapping the reduced 7th. Pleotelson with two low, longitudinal ridges; apex rounded, extending posteriorly above a rounded, vertical notch. Uropod outer ramus ovate, as long as the arcuate inner ramus, neither reaching end of pleotelson. Males and females similar.

**TYPE MATERIAL**

Holotype: NZOI Type No. 141 [E959, ♂, 5 mm].

Paratypes: NZOI Type No. P198 [E959, 2♀♀, 5 mm].

TYPE LOCALITY: Mt. Maunganui.

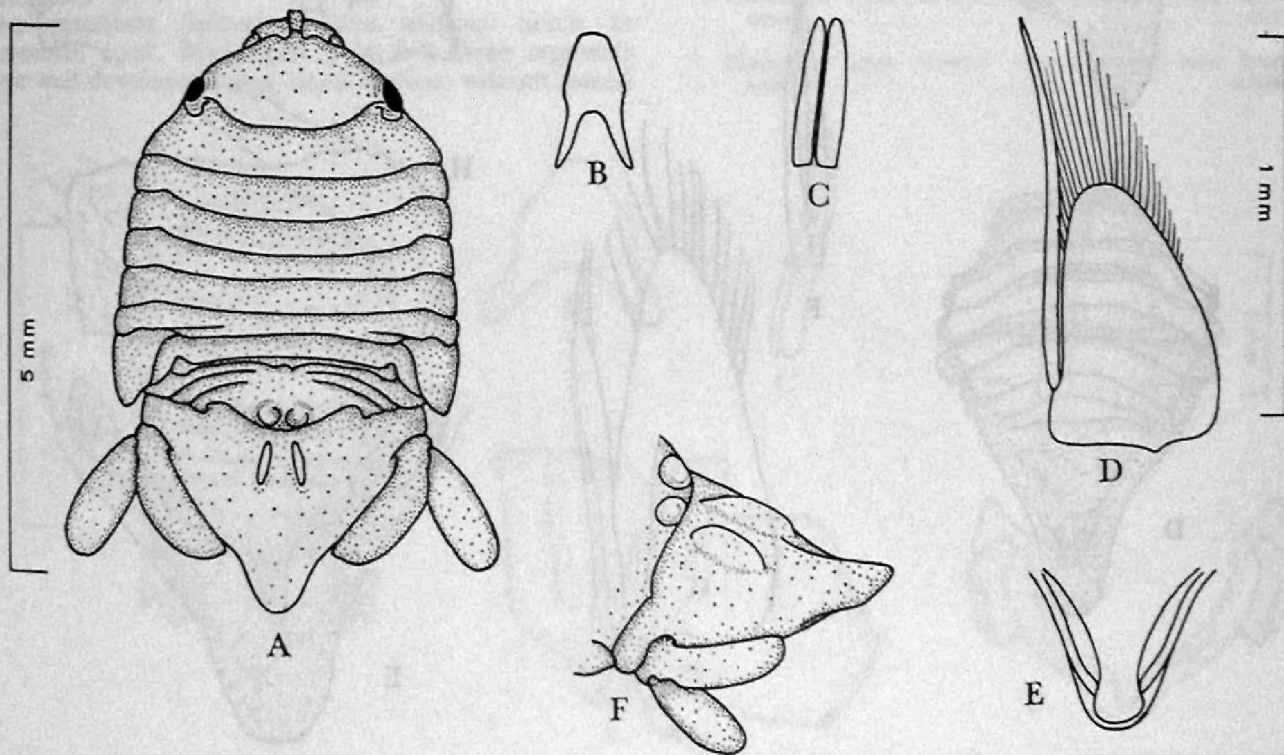


FIG. 46. *Cymodopsis montis* n.sp., mature ♂: A, whole animal; B, epistome; C, penes; D, pleopod 2, inner ramus; E, pleotelson apex, ventral view; F, pleotelson, side view.