

# James River Park's Entomology Guide



## Table of Contents

Butterflies and Moths.....	page 1
Bees.....	page 2
Beetles.....	page 3
Damselflies and Dragonflies.....	page 4
Grasshoppers and Crickets.....	page 5

## Butterflies and Moths

### **Black Swallowtail**

*Papilio polyxenes*

**Wingspan:** 3.25-4.25"

**Flies:** May-Sept.

**Host plants:** Queen Anne's  
Lace, dill, parsley, fennel



### **Eastern Tiger Swallowtail**

*Papilio glaucus*

**Wingspan:** 3.6-6.5"

**Flies:** April-Sept.

**Host plants:** Wild cherry,  
Tuliptree, sweetbay



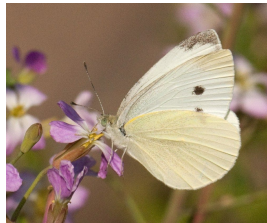
### **Cabbage White**

*Pieris rapae*

**Wingspan:** 1.75-2.25"

**Flies:** Late Mar.-Oct.

**Host plants:** Mustards



### **Clouded Sulphur**

*Colias philodice*

**Wingspan:** 1.5-2.75"

**Flies:** Late Mar.-early Nov

**Host plants:** Partridge pea,  
Wild senna



### **Gray Hairstreak**

*Strymon melinus*

**Wingspan:** 0.85-1.4"

**Flies:** Late April-Sept.

**Host plants:** Legumes and  
Mallows



### **Monarch**

*Danaus plexippus*

**Wingspan:** 3.3-4.9"

**Flies:** Late May-Oct.

**Host plant:** Milkweeds



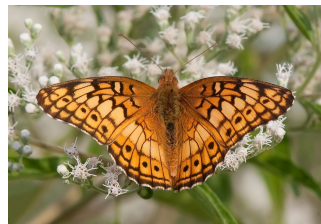
### **Variegated Fritillary**

*Euptoieta claudia*

**Wingspan:** 1.75-3.2"

**Flies:** Late June-Oct.

**Host Plant:** Violets,  
Purslane



### **Common Buckeye**

*Junonia coenia*

**Wingspan:** 1.6-2.75"

**Flies:** Late June-Oct.

**Host Plant:** Gerardia, plantain



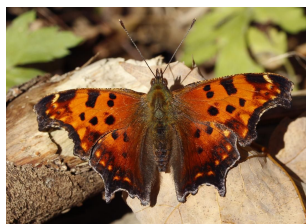
### **Eastern Comma**

*Polygona comma*

**Wingspan:** 1.75-2.5"

**Flies:** Late Mar.-Oct.

**Host Plant:** Nettle, elm



### **Painted Lady**

*Vanessa cardui*

**Wingspan:** 2-2.9"

**Flies:** Late April-Oct.

**Host Plant:** Thistles,  
Legumes, mallows



## Bees

### **Common Eastern Bumble Bee**

*Bombus impatiens*

**Tongue length:** Medium

**Host Plant:** Greenhouse  
Tomatoes



### **Confusing Bumble Bee**

*Bombus perplexus*

**Tongue length:** medium

**Host Plant:** Honeysuckles



### **Half-Black Bumble Bee**

*Bombus vagans*

**Tongue length:** medium

**Host Plant:** milkweeds,  
clovers



### **Two-Spotted Bumble Bee**

*Bombus bimaculatus*

**Tongue length:** medium

**Host Plant:** Thistles,  
Meadowsweet



### **Rusty-Patched Bumble Bee**

*Bombus affinis*

**Tongue length:** short

**Host Plant:** Sunflowers,  
Goldenrods

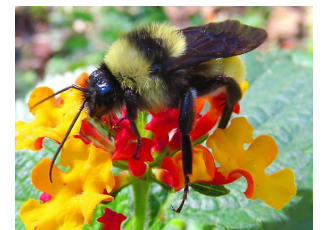


### **American Bumble Bee**

*Bombus pensylvanicus*

**Tongue length:** long

**Host Plant:** vetches,  
Goldenrods, clovers

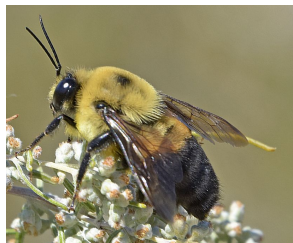


### **Brown-Belted Bumble Bee**

*Bombus griseocollis*

**Tongue length:** medium

**Host Plant:** Milkweeds, thistles,  
Sunflowers



### **Black & Gold Bumble Bee**

*Bombus auricomus*

**Tongue length:** long

**Host Plant:** bee balm,  
Nightshades



## Beetles

### **American Oil Beetle**

*Meloe americanus*

#### **Non -Flying Insect**

**Behavior:** Emits a chemical when under pressure



### **Big Dipper Firefly**

*Photinus pyralis*

#### **Flying Insect**

**Behavior:** Will flash its light and then flies upward in a “j” curve



### **Dogbane Leaf Beetle**

*Chrysochus auratus*

#### **Flying Insect**

**Behavior:** This beetle lives and mates on Dogbane plant, which is toxic to humans



### **Eastern Hercules Beetle**

*Dynastes tityus*

#### **Flying Insect**

**Behavior:** The two horn-like pinchers are used in battles with other makes over territory



### **Flower Longhorn Beetle**

*Stenelytrana emarginata*

#### **Flying Insect**

**Behavior:** The larvae bore into Elm and Beech



### **Green June Beetle**

*Cotinus nitida*

#### **Flying Insect**

**Behavior:** Eats many various like peaches, raspberries, plums, and apples



### **Stag Beetle**

*Lucanus capreolus*

#### **Flying Insect**

**Behavior:** Mandibles used in male-to-male combat to win a mate



### **Varied Carpet Beetle**

*Anthrenus verbasci*

#### **Flying Insect**

**Behavior:** They have zig-zag bands of brown, white, and yellow on their wing coverings



### **Convergent Lady Beetle**

*Hippodamia convergens*

#### **Flying Insect**

**Behavior:** Can offer farmers a means of protecting crops



### **Whirligigs**

*Gyrinus spp.*

#### **Non -Flying Insect**

**Behavior:** Have four eyes: two below and two above the water



## Damselflies and Dragonflies

### **Blue Dasher**

*Pachydiplax longipennis*

**Body Length:** 25-43mm

**Behavior:** Both genders flash their abdomens on alert



### **Common Sanddragon**

*Progomphus obscurus*

**Body Length:** 57-62mm

**Behavior:** Insect raises its abdomen to cool off on hot days



### **Common Whitetail Skimmer**

*Libellula lydia*

**Body Length:** 43-48mm

**Behavior:** Unlike other species this species can be found in dryer environments



### **Eastern Pondhawk**

*Erythemis simplicicollis*

**Body Length:** 38-43mm

**Behavior:** Attack insects as large as themselves sometimes including their own species



### **Eastern Amberwing**

*Perithemis tenera*

**Body Length:** 20-25mm

**Behavior:** Mimic wasps with their brown and yellow abdomen segments and tail flicks



### **Red Saddlebags**

*Tramea onusta*

**Body Length:** ~50 mm

**Behavior:** Have bright red patches on their wings, which gave them their namesake



### **Blue-Fronted Dancer**

*Argia apicalis*

**Body Length:** 33-40 mm

**Behavior:** Appears to be dancing and bouncing when flying



### **Ebony Jewelwing**

*Calopteryx maculata*

**Body Length:** 37-57mm

**Behavior:** Females have a small, white oval on the tip of their wings



### **Seepage Dancer**

*Argia bipunctulata*

**Body Length:** 23-30mm

**Behavior:** Clear wings except for an orange plate on each wing



### **Stream Bluet**

*Enallagma exsulans*

**Body Length:** 29-37mm

**Behavior:** Females go completely underwater to release fertilized eggs



## Grasshoppers and Crickets

### **Common Coneheads**

*Neoconocephalus sp.*

**Physical Features:** faces are pinched into a cone shape and are green to mimic leaves



### **Differential Grasshopper**

*Melanoplus differentialis*

**Physical Features:** chevron stripes on its legs; tan and black coloring



### **Eastern Shieldback Katydid**

*Atlanticus spp.*

**Physical Features:** wingless and have a flat, wide pronotum that looks like a shield



### **Grizzly Locust**

*Melanoplus punctulatus*

**Physical Features:** thick white and black bands on their hindlegs



### **Southeastern Lubber Grasshopper**

*Romalea microptera*

**Physical Features:** Black and yellow markings; larger in size for the Grasshopper family sports



### **Spur-throated Grasshopper**

*Melanoplus ponderosus*

**Physical Features:** colors include yellow, orange, green, brown, or red with bands or spots



### **True Katydid**

*Pterophylla camellifolia*

**Physical Features:** veins on their leaf-shaped wings resemble



### **Two-striped Grasshopper**

*Melanoplus bivittatus*

**Physical Features:** light brown in color with two yellow stripes that run the length of the body

