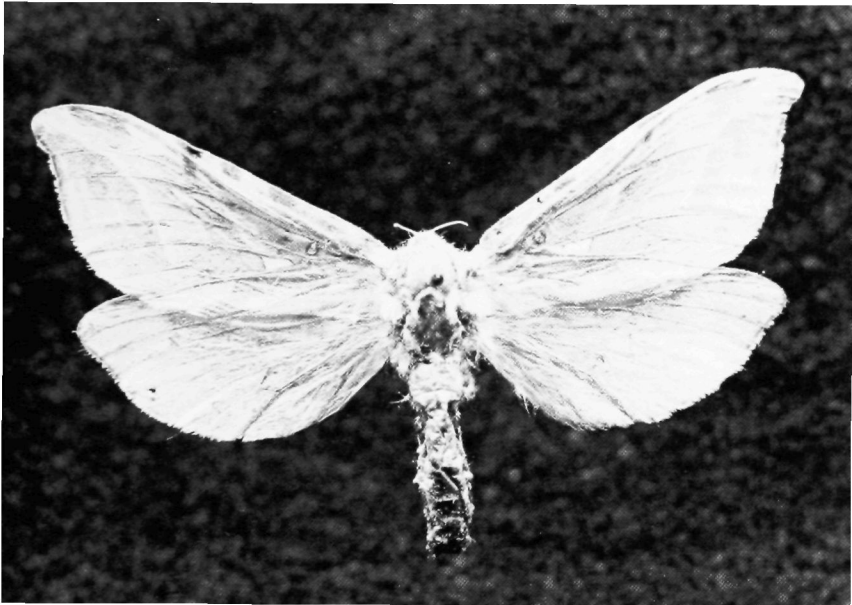


**A LIST OF THE LEPIDOPTERA OF MAINE**  
**Part 2**

**THE MICROLEPIDOPTERA**  
**Section 2**  
**COSMOPTERIGIDAE THROUGH HEPIALIDAE**

**Auburn E. Brower**



A GHOST MOTH — *Sthenopis argenteomaculatus* Harris

**A JOINT PUBLICATION OF THE  
MAINE DEPARTMENT OF CONSERVATION**  
Maine Forest Service  
Division of Entomology, Augusta, Maine  
and the  
**DEPARTMENT OF ENTOMOLOGY, ORONO**

**August 1984**

Inquiries concerning this bulletin may be sent to:  
Dr. Auburn E. Brower  
8 Hospital Street  
Augusta, ME 04002

A LIST OF THE LEPIDOPTERA OF MAINE  
Part 2

THE MICROLEPIDOPTERA  
Section 2

COSMopterigidae THROUGH HEPIALIDAE

Auburn E. Brower

**A JOINT PUBLICATION OF THE  
MAINE DEPARTMENT OF CONSERVATION**  
Maine Forest Service  
Division of Entomology, Augusta, Maine  
and the  
**DEPARTMENT OF ENTOMOLOGY, ORONO**  
Maine Agricultural Experiment Station  
University of Maine at Orono



# CONTENTS

LOCALITIES .....	iv
MAP .....	v
FOREWORD .....	vii
PREFACE .....	ix
Family COSMOPTERIGIDAE .....	1
Family EPERMENIIDAE .....	3
Family GELECHIIDAE .....	4
Family OECOPHORIDAE .....	14
Family BLASTOBASIDAE .....	18
Family STENOMIDAE .....	22
Family ETHMIDAE .....	22
Family GLYPHIPTERIGIDAE .....	22
Family AEGERIIDAE (SESIIDAE) .....	23
Family HELIODINIDAE .....	25
Family PLUTELLIDAE .....	26
Family YPONOMEUTIDAE (ARGYRESTHIIDAE) .....	26
Family SCYTHRIDAE .....	28
Family HELIOZELIDAE .....	29
Family DOUGLASIIDAE .....	30
Family ELACHISTIDAE .....	30
Family COLEOPHORIDAE .....	31
Family GRACILARIIDAE .....	39
Family OPOSTEGIDAE .....	47
Family LYONETIIDAE .....	47
Family TISCHERIIDAE .....	50
Family PSYCHIDAE .....	50
Family ACROLOPHIIDAE .....	51
Family TINEIDAE .....	51
Family NEPTICULIDAE .....	55
Family INCURVARIIDAE .....	57
Family ADELIDAE .....	58
Family ERIOCRANIIDAE .....	58
Family MICROPTERYGIDAE .....	58
Family HEPIALIDAE .....	58
INDEX .....	60
Additions to the Maine List .....	69
Literture Cited .....	70

## Number of Species

Macrolepidoptera	Part 1	1267	
Macrolepidoptera	Part 2 Section 1	872 (specimens examined	75,536)
	Part 2 Section 2	848 (specimens examined	15,505)
	Total	2987	

## LOCALITIES

Maine is divided into over 800 political divisions. There are several duplication place names and township numbers in different surveys. Many of the woodland to ships have no nearby town. The attempt is to give an area to be associated with Township/Range numbers.

Coburn Gore Customs (Jackman)

T2R4 Tim Pond

Pittston Farm (Somerset Co.)

T2R6 Squaw Brook (Greenville)

T3R10 Klondike Basin, Mt. Katahdin

T5 R6 Mt. Chase

T5R16 Little Russell Mt.

5 ND (Northern Division)

T6R7 Camp Colby

T6R8 Hay Lake

T6R9 Katahdin Iron Works, N. of Sebec

T6R11 Round Pond

T6R14 Caucomgomoc

T6R17 below Baker Lake

Long A (Millinocket)

T8R5 N. of Knowles Corner

T8R9 E. of Munsungun Lake

T8R12 E. of Tramway

T8R18 Eagle Lake & Tramway

T8R17 S.E. of Hardwood Mt.

T8R19 N.W. of Baker Lake

T9R5 (Oxbow)

T10R12 W. of Clear Lake

Buffalo (Portage)

T11R6 W. of Ashland

T11R8 Round Mt.

T4R3 Lower Cupsuptic

T2R4 Tim Pond (Eustis)

Coburn Gore (Eustis)

T2R6 Big Squaw Mt. (Greenville Junction)

T2R4 Pittston Farm (Seboomook)

T3R12 Chesuncook Dam

Squaw Brook (Greenville Junction)

T5R6 Mt. Chase (Patten)

T5R6 Shin Pond (Patten)

T6R7 Camp Colby (Patten)

T6R11 Round Pond

T6R14 Caucomgomoc

T7R17 Baker Lake

T8R19 (near Baker Lake)

T9R18 Hardwood Mt.

T8R13 Eagle Lake

T9R5 (Oxbow)

T10R11 Clear Lake

T11R8 Round Mt.

T11R10 Horseshoe Mt.

T11R14 Clayton Lake

T12R17 Lac Frontiere, near Daaquam Que.

T13R10 N.W. of Round Mt.

T13R12 Round Pond Mt.

T14R16 Depot Mt.

T15R9 DeBoulie Mt.

T15R11 W. of DeBoulie Mt.

T15R12 E. of Mouth of Big Black R

T15R13 Mouth of Big Black River

T16R9 St. Francis

T16 M D E. of Eastbrook

T16R13 Chimenticook

T17R3 W. of Van Buren

T17R4 Guerette or Sinclair

T17R5 Cross Lake

T17R11 Dickey

T17R12 Rocky Mt.

T18R8 (Allagash)

T18R12 Rocky Mt.

T18R13 Campbell Branch

T19R11 Estcourt

20 E. D. (Wesley)

Indian Town (Princeton)

31 M D W. of Wesley

T11R10 Horseshoe Mt.

T11R14 Clayton Lake

T11R17 near Daaquam, Que.

Nicatus Lake (Lincoln)

Long A (Millinocket)

Depot Camp (Millinocket)

T13R12 Round Pond Mt.

T14R16 Depot Mt.

T15R9 DeBoulie Mt.

T15R13 mouth Big Black River

T16R5 Square Lake

T16R13 Chimenticook

T16R9 St. Francis

T17R5 Cross Lake (Guerette)

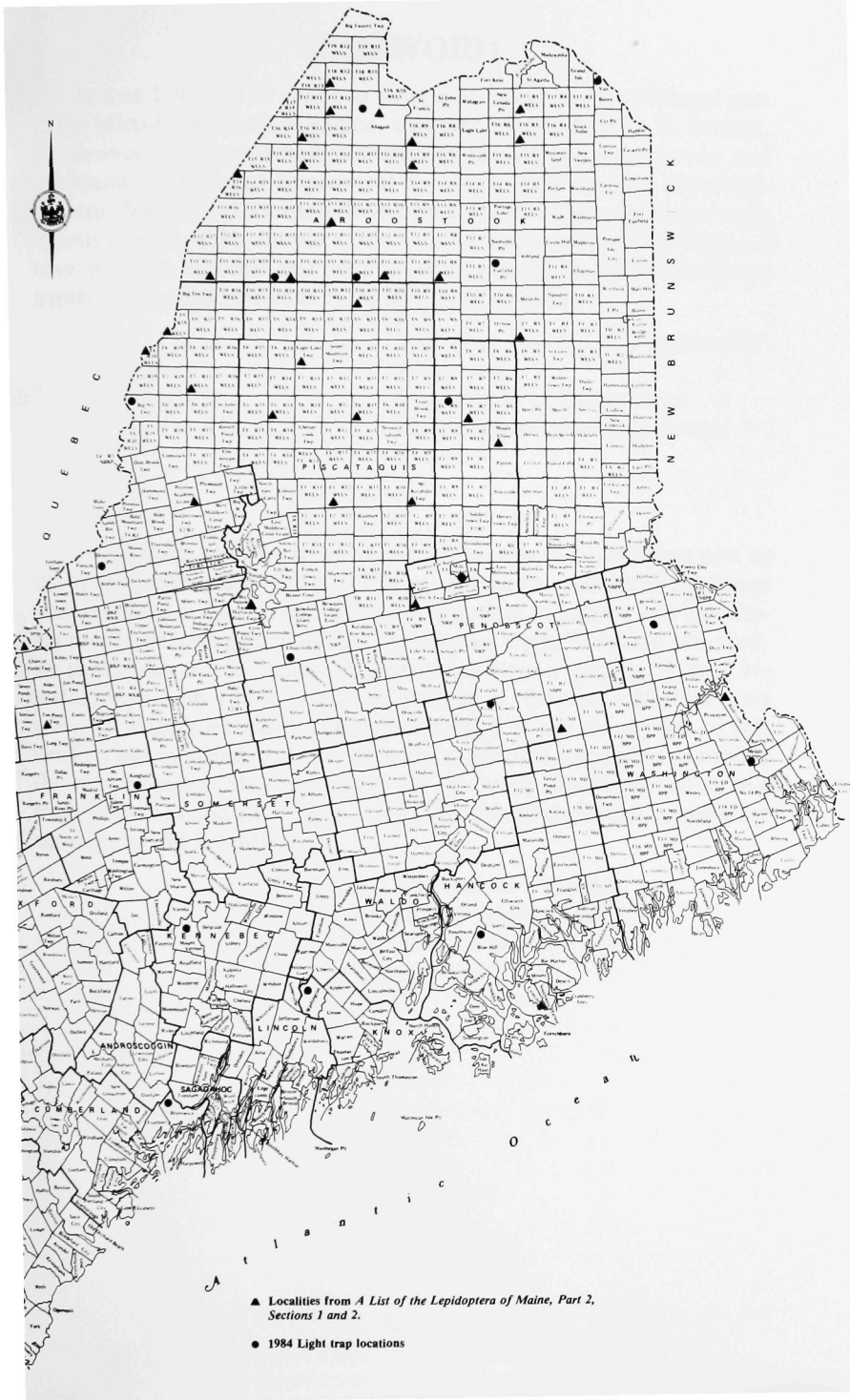
T17R11 Dickey

T17R12 Rocky Mt.

T18R12 Rocky Mt.

Kellyland (Princeton)

Tremont (Southwest Harbor)



▲ Localities from *A List of the Lepidoptera of Maine, Part 2, Sections 1 and 2.*

● 1984 Light trap locations





## FOREWORD

It is an honor to be asked to write a foreword to an additional part to the Microlepidoptera of Maine, authored by Dr. Auburn E. Brower. Dr. Brower has recently had published by the Maine Forest Service and the Maine Agricultural Experiment Station section 1 of the Microlepidoptera. Now the publication of section 2 will give those interested individuals a much more complete reference to species recorded in Maine. I have no doubt that this and the previous parts will be considered an extremely important reference for a long time to come.

Professor Howard Y. Forsythe, Jr.  
Chairman,  
Department of Entomology  
Maine Agricultural Experiment  
Station

It is a great pleasure to introduce to you this third and final part of the list of Lepidoptera of Maine. Many years and a great many ramblings over the State accompanied by long hours spent in rearing and identifying specimens have gone into this monumental work. There are few workers today who would consistently devote as large a portion of their life endeavor to such a task as did Dr. Auburn E. Brower. Although there are only slightly less than 3,000 species listed in the three parts of this work, it has required probably as many as 200,000 specimens to provide the data included. May those who use this work cherish the effort and make additions and changes in the future with as dedicated concern for accuracy as did its author.

Richard G. Dearborn  
Survey Entomologist  
Maine Forest Service



## PREFACE

Specimens for this list have come from a number of sources. My own collecting has been of paramount importance as I have worked to learn of and about all species likely to occur in Maine and to reach the special ecological areas they inhabit at the proper time to secure them, as well as to study their food plants. Sometimes rearings have provided the only specimens. Many species occur in the spring and others in the fall before and after many collectors work; in fact the largest number of species of Lepidoptera seem to occur in the spring and early summer. Private collectors who have operated light traps, bait traps or special collecting techniques have secured the greatest number of scarce and rare species. My big walk-in light trap was operated for years at Farmington and then at Vassalboro, and it yielded much superior material. The largest amount of material has been received from a Maine Forest Service light trap project during 25 years of only one month each summer, using killing traps operated by untrained personnel.

Moth specimens need special attention, especially the great number of small to very tiny micros. Pinning, spreading, including the antennae, cementing to the pin, etc. are delicate operations on these tiny, fragile creatures. Determining the anatomical features on which the classifications are based is often a difficult and exacting task, especially since so many antennae, palpi, legs and other needed structures have been broken off from killing trap material. Then the genitalia need special consideration, and slides have been made of many species. Many others have had the genitalia relaxed once or twice to get them in position to be studied. On numerous specimens at least a part of the venation needs careful exposure for identification purposes. Many other characters are used.

My collection was started 75 years ago and I have devoted to it all the time I could since. During a period of years I collected for many specialists in special groups of insects, securing many desirable and rare species. Then I engaged in academic training until completion of the Ph.D. degree to make it a profession. This collection, along with my experience, has been of outstanding importance in my professional and private work on insects—thirty-eight years in the office of State Entomologist of Maine, and six more in a consulting capacity. I have published a number of papers on Lepidoptera. Also, based on my collection the Life Sciences and Agriculture Experiment Station and the University of Maine have published Part 1 and Part 2, Section 1 "A List of the Lepidoptera of Maine" in Technical Bulletins 66 and 109.

The combined Brower and Shaw collection is housed in 34 cabinets (six steel) and hundreds of boxes. It is not a hobby collection at all but a scientific reference collection to assist in my work. At a large expense to secure proper scientific names, a very large number of insect collections

has been visited and studied from Sarasota, Florida to Halifax, N.S. and west to British Columbia and California. Many trips to the United States National Museum and to the Canadian National Collections have been made. On many of these trips my specimens have been compared with types. Many hundreds of microscope slides have been made, and thousands of moths checked for microscopic physical details at home. The important S.A. Shaw collection of micros was greatly benefitted by determinations by Dr. Dietz early in this century, some also by Kearfott, Busck and others. Work on the micro portions of this list has been done since my retirement at home with a good microscope. The chief assistance on the micros has been from Forbes, Heinrich, McDunnough, Engelhardt, Braun, Clarke, Tom Freeman, Munroe, Hodges and others. One of our leading micro workers has stated he feels at least one half of the micros in collections and literature are incorrectly named. I have worked with actual specimens in my collection or with determinations of specialists.

Auburn E. Brower  
Visiting Professor of Entomology  
University of Maine at Orono  
Formerly, Entomologist  
Maine Forest Service  
Augusta, Maine

# MICROLEPIDOPTERA

## Family COSMopterigidae

lcDunnough list  
numbers

number of  
specimens

### Genus *CHRYSOCLISTA* Stainton 1854

- 573 *villega* Busck Augusta, May, no date 2, 23 May, 24 May, 25 May, 30 May, 3 June 2, 23 July, 18 August; Bar Harbor, 7 June, 22 July, 23 July 2, 29 July; Pretty Marsh, Mt. Desert Is., 25 August; Princeton, 8 July 17
- 573.1 *linneella* Clerck Greenville, 11 July 4; Augusta, 2 May bred, 25 May, 29 May, 30 May, 3 June 2, 7 June, 29 June; Bar Harbor, 22 July, 23 July, 29 July 15

### Genus *COSMopterix* Hübner 1825

- 574 *pulcherrimella* Chambers (*pulchrimella* Chambers MONA 1472) 17 localities, 9 July-2 August 62
- 575 *clemensella* Stainton Augusta, 27 June; Bar Harbor, 3 August, 4 August, 13 August; Mt. Desert, 5 July; Sanford, 2 July; Dennistown, 7 July; Kokadjo, 19 July, 3 September 9
- 576 *gemmiferella* Clemens 14 localities, 4 July-30 July; Bar Harbor, May 4 emerged ex bindweed 53
- 583.1 *dapifera* Hodges Bar Harbor, 21 August, Type 1
- 585 *fernaldella* Walsingham 17 localities, 11 June-13 August; Orono Type locality? reared ex *Carex* 244
- 585.1 *floridanella* Beutenmuller Hampton, N.H., 11 July, 17 July, 20 July, 24 July, 25 July 5
- 586 *montisella* Chambers Bar Harbor, 10 July; Lincoln, 12 July; T8R19, 27 July 3
- 587.1 *molybdina* Hodges Greenville, 13 July; Bar Harbor, 1 June, 30 June, Paratype (slide) Hodges, 4 July, 10 July, Paratype Hodges, 13 July, 15 July 2; Lincoln, 24 July; T9R5, 30 July 10
- 88 *clandestinella* Busck Dennistown, 24 July; Bar Harbor, 10 July 2, 11 July 3, 13 July 3, 15 July; T14R16, 13 July; Lincoln, 14 July, 16 July, 29 July 14
- 90 *magophila* Meyrick Bar Harbor, 4 July, 5 July 2

### Genus *BATRACHEDRA* Herrich-Schaeffer 1853

- 96 *praeangusta* Haworth 14 localities, 5 June-9 August 53
- 00 *salicipomonella* Clemens Hampton, N.H., 21 July, 24 July det. Dietz; Lincoln, 17 July 4 6

- 7701 **trichella** Busck (**DUOSPINA** Hodges 1966) Dublin, N.H., no dates, 2 det. Busck; Chesuncook, 15 July; Greenville, 24 July 4
- 7701.1 species 12 localities, 5 May-6 August 50

**Genus BLASTODACNA Wocke 1876**

- 7705 **curvilineella** Chambers Montreal, Que., 22 May, 23 May, 8 June; Augusta, 9 June 2, 18 June; Millinocket, 23 July 7

**Genus CHRYSOPELEIA Chambers 1874**

- 7706 **ostryaeella** Chambers Quebec, 25 April bred, 27 May bred, 9 June; Augusta, 27 August? 4

**Genus STAGMATOPHORA Herrich-Schaeffer 1853**

- 7716 **sexnotella** Chambers Hampton, N.H., 30 June; Oquossoc, 1 July; Millinocket, 25 July, 26 July, 5 August; Patten, 23 July; Allagash, 24 July; Greenville, 20 July; Marion, 14 July; Princeton, 6 July 10
- 7717 **wyattella** Barnes & Busck Oquossoc, 6 July; Millinocket, 26 July; Allagash, 7 July, 24 July; Marion, 10 July, 14 July 6

**Genus PERIMEDE Chambers 1874**

- 7720 **erransella** Chambers 10 localities, 5 July-3 August 29

**Genus PSACAPHORA Herrich-Schaeffer 1853**

- 7727 **terminella** Westwood Augusta, 29 August 12, 30 August 4, 4 September 3, 5 September; New Harbor, 30 August; Oquossoc, 11 July; T5R16, 20 July 24 July, 26 July; T11R8, 4 July, 13 July; Bar Harbor, 12 September 28
- race **engelella** Busck Dennistown, 20 July; T5R16, 14 July, 24 July 3
- 7735 **cephalonthiella** Chambers (syn. **cephalanthiella** Chambers) Winslow, larva, 7 September, on *Cephalanthis*, emerged September 1

**Genus CYPHOPHORA Herrich-Schaeffer 1853**

- 7738 **tricristatella** Chambers Hampton, N.H., 12 June, 21 June, det. Kearfott; St. Hilaire, Que., 6 June, Winn 3
- 7739 **passerella** Busck Lee, N.H., 20 July 2; Lincoln, 12 July, 15 July, 20 July 5
- 7740 **eloisella** Clemens (**MOMPHA** Hübner 1825) 21 localities, 26 June-12 August; Orono, 1 bred ex *Oenothera* 164

**Genus STILBOSIS Clemens 1860**

- 7741 **tesquella** Clemens Montreal, 1 July, 6 July; Augusta, emerged May and June 5, Blotch-miner, *Desmodium* 7

**Genus WALSHIA Clemens 1864**

- 3.2 *similis* Hodges Shin Pond, 19 July, det. Hodges 1

**Genus LIMNAECIA Stainton 1851**

- 4 *phragmitella* Stainton 34 localities, 26 June–17 August; Augusta, July and August, borer in cattail heads 245

**Genus MOMPHA Hübner 1825**

- 6 *albapalpella* Chambers 23 localities, 5 July–21 August 52
- 6.1 species near *albapalpella* Oquossoc, 4 August; Eustis, 13 July; St. Francis, 29 July, 1 August; Allagash, 13 July, 14 July, 16 July, 28 July, 2 August 2 10
- 8 *brevivittella* Clemens 10 localities, 16 April–3 October 46
- 9 *stellella* Busck 12 localities, 12 April–27 October; Windsor, 10 January, in a building; Indian Town, 13 December, in a building 30
- 10 *circumscriptella* Zeller Oquossoc, 12 July, 14 July; Chesuncook, 14 July, 20 July; Lincoln, 8 July; Millinocket, 8 July; T9R5, 31 July; T8R19, 3 July; T8R12, 2 August; Allagash, 14 July 10
- 10.1 species near *circumscriptella* Kingfield, 2 August; Guerette, 19 July 2
- 10.2 species Dennistown, 8 July, 10 July; Millinocket, 26 July 2; T9R5, 31 July; Patten, 22 July; T14R16, 8 July; Allagash, 1 August; Bar Harbor, 20 July; Kellyland, 24 July 10
- 10.3 species Mt. Katahdin, 9 July, 29 July; T8R19, 28 July 3
- 11.1 *bottomeri* Busck 12 localities, 25 June–15 September 22
- 3 *definitella* Zeller Mt. Vernon, 8 June 2; Bar Harbor, 20 June; St. Francis, 18 July; Dennysville, 24 July 2; Marion, 9 August 7
- 5 *claudiella* Kearfott 15 localities, 2 May–15 August 59
- 7 *murtfeldtella* Chambers Oquossoc, 25 July; Millinocket, 1 August; Allagash, 14 July, 25 July 4
- 7.1 *subbistrigella* Haworth Orono, Fernald coll. recorded by Walsingham 1
- 8 *unifasciella* Chambers Allagash, 5 July 1
- 2.1 *decorella* Stephens (LAVERNA Curtis 1839) Mt. Katahdin, 9 July; Kingfield, 26 July; Bar Harbor, 24 May, 29 May; Mt. Desert, 9 April, 19 May, 15 July 7

**Family EPERMENIIDAE****Genus EPERMENIA Hübner 1825**

- species det. Hodges Jackman, 10 August; Bar Harbor, 16 August; Lincoln, 29 July 3

- 7765 **albapunctella** Busck Southwest Harbor, 27 June; T6R7, 18 July 2  
 7768 **cicutaella** Kearfott Hampton, N.H., 6 August, det. Kearfott 1  
 species several localities, several specimens

### Family GELECHIIDAE

#### Genus METZNERIA Zeller 1839

- 7780 **lappella** Linnaeus 10 localities, 25 June–28 August 17

#### Genus ISOPHRICTIS Meyrick 1874

- 7786 **pennella** Busck Lincoln, 10 July 1  
 7794 **similiella** Chambers Augusta, 2 June 1

#### Genus STEREOMITA Braun 1922

- 7799 **andropogonis** Braun Augusta, 2 June, 29 June, no date, 2; T9R5, 14 July 5

#### Genus PTYCERATA Ely 1910

- 7800 **busckella** Ely 10 localities, 7 July–31 July 17

#### Genus ARISTOTELIA Hübner 1825

- 7805 **disconotella** Chambers Hampton, N.H., 13 July; Lee, N.H., 17 July; Oquossoc, 29 July; Bar Harbor, 8 August 4  
 7806 **angustipennella** Clemens Dennistown, 20 July 2  
 7807 **gilvolineella** Chambers Hampton, N.H., 17 July 1  
 7811 **pullusella** Chambers Houlton, 31 July 1  
 7811.1 **minimella** Chambers Hampton, N.H., 25 May; Bar Harbor, 11 July, 14 July; Marion, 9 July 4  
 7814 **absconditella** Walker Hampton, N.H., 6 July; Bar Harbor, 7 July, 16 July; Sinclair, 10 July 4  
 7815 **physaliella** Chambers Hampton, N.H., 5 May, 5 June 2  
 7817 **quinquepunctella** Busck Hampton, N.H., 30 May, 20 June; Bar Harbor, 2 July, 7 July 4  
 7818 **rubidella** Clemens 18 localities, 2 July–3 August 35  
 7821 **lespedezae** Braun Oquossoc, 23 July, 16 August 2  
 7823 **fungivorella** Clemens 13 localities, 9 July–22 August 33  
 7827 **pudibundella** Zeller Durham, N.H., 19 July; Bar Harbor, 17 July 2  
 7834 **roseosuffusella** Clemens 20 localities, 11 June–19 September 83



**Genus NANNODIA Heinemann 1870**

- 53.1 *sevguttella* race *naeviferella* Duponchel Augusta, 23 May, 30 May emerged, June 6; Whitefield, 15 May; Dickey, 6 July, all reared on *Chenopodium*

5

**Genus CHRYSOPORA Clemens 1860**

- 54 *lingulacella* Clemens Augusta, 7 July, 15 July, 18 August; Strong, bred 28 July; Greenville, 9 July, 10 July, 11 July; Bar Harbor, 12 August, 16 August, 19 August, all bred; Allagash, 7 July 6, 15 July 2; T11R8, 9 July; Hampton, N.H., 18 July
- 55 *hermannella* Fabricius Augusta, emerged 3 June, 15 June, 17 August; Strong, 28 July; Bar Harbor, 16 June, 19 June, 8 July, 10 August, 16 August, 19 August, 25 August; Lincoln, 31 July
- 56 *versicolorella* Kearfott Bar Harbor, 17 August

19

13

1

**Genus ENCHRYSA Zeller 1873**

- 57 *dissectella* Zeller Lincoln, 31 July; Kellyland, 17 July, 20 July, 31 July

4

**Genus NUMATA Busck 1906**

- 58 *bipunctella* Busck? Allagash, 23 July

1

**Genus GLAUCE Chambers 1875**

- 59 *pectenalaella* Chambers 11 localities, 5 July-2 August

26

**Genus HELICE Chambers 1873 (THEISO Chambers 1874)**

- 52 *constrictella* Zeller Hampton, N.H., 20 June, 6 July

2

**Genus EVIPPE Chambers 1873**

- 57 *prunifoliella* Chambers 25 localities, 10 June-3 August
- 58 *leuconota* Zeller Augusta, 28 May, 16 June; Coburn Gore, 29 July; Dennistown, 12 July; Greenville, 20 July; Bar Harbor, 18 July; Lincoln, 5 July, 6 July, 11 July 2, 13 July, 21 July, 24 July, 25 July, 26 July 2; Millinocket, 8 July 4; Dennysville, 31 July

107

23

**Genus RECURVARIA Haworth 1828**

- 5 *obliquistrigella* Chambers Packard reports this as abundant about fir and spruce at Portland, Harpswell, and Brunswick, moths July and August
- 6 *juniperella* Kearfott reported on Juniper in Maine
- 7 *robiniella* Fitch Boothbay Harbor, 2 July; Augusta, 27 May 2; Bar Harbor, 27 May, 29 May 2, 30 May, reared ex black locust, 1 June 2, 3 June, September, no date; Mt. Desert Is., July

13

- 7880 **apictripunctella** Clemens Augusta, 15 June 2, 25 June 3, 29 June 2; South China, 6 June, 10 June; Windsor, 28 June; Chelsea, 20 June; Caratunk, 2 July; Lincoln County, reared, no date 13
- 7880.1 **abietisella** Packard Packard found this in numbers about fir in Friendship and other places
- 7887 **thujaella** Kearfott Augusta, in low numbers, general on *Arbor vitae*, 1 August; Lincoln County, 1 August; Bangor, 15 June 4; Bar Harbor, 5 June 3
- 7892 **piceaella** Kearfott 19 localities, 28 May-12 August 37
- 7892.1 **obscuraella** Kearfott Augusta, 28 June; Bar Harbor, 2 June, 13 June, 5 August 4
- 7896 **quercivorella** Chambers Hampton, N.H., 26 May, 3 July; Kezar Falls, 17 June 5; Augusta, 9 June, 10 June, 18 June, 29 June 2, 30 July, 8 August; Smithfield, 25 June; Bar Harbor, 17 May, 6 June, 30 June, 1 July, 29 July, 2 August; Salisbury Cove, 19 May 3; Staceyville, 30 June; T11R14, 30 July 27
- 7896.1 **resinosae** Freeman? Thornton, N.H., 27 May 1
- 7898 **nanella** Dennis & Schiffermuller Augusta, 12 May, 11 June, 14 July; Bar Harbor, 11 June; Lincoln, 7 July, 10 July, 31 July; Millinocket, 21 July; Buffalo, 23 July 9
- 7898.1 **crataegella** Busck Hampton, N.H., 8 July, det. by Busck, 10 July 2
- 7899 **ceanothiella** Braun on *Ceanothis* in New Hampshire
- 7901 **nigra** Busck (*nigritus* Hodges) Hampton, N.H., 9 June 1
- 7907.1 **martini** Freeman Bar Harbor and Hull, Que. A needle miner in spruce 3

### Genus EUCORDYLEA Dietz 1900

- 7908 **atrpicitella** Dietz 18 localities, 8 June-17 September 52

### Genus PARALECHIA Busck 1903

- 7913 **pinifoliella** Chambers Brownfield, 29 June 8; Augusta, 17 June 4, 12 July; Bar Harbor, June, 20 June, 22 June 3, 28 June; Mt. Desert, 20 June 2 18

### Genus TRYPANISMA Clemens 1860

- 7917 **prudens** Clemens Augusta, 12 July; Camp Colby, 28 July 2

### Genus PERIPLOCA Braun 1919

- 7918.1 **nigra** Hodges Kezar Falls, emerged June ex gall on *Juniperus virginiana* 1

**Genus EPITHECTIS Meyrick 1895**

- 323 **attributella** Walker Canton, emerged ex red oak leaves; Paris, 3 September; Augusta, 27 July 2, 17 August; Lincoln, 4 July, 11 July, 12 July, 17 July 2; Crystal, 8 August; Bar Harbor, 5 June, 25 July; Marion, 14 July 14
- 324 **sylvicolella** Busck Bar Harbor, 3 July 1
- 925 **bicostomaculella** Chambers (syn. of **decemmaculella** Chambers) (TAYGETE Chambers 1873) Augusta, 19 August; Millinocket, 4 July 2

**Genus LEUCOGONIA Meyrick 1929 (LEUCOGONIELLA Fletcher 1940)**

- 328.1 species Augusta, 29 June, 16 July; Southwest Harbor, 26 August 2; Enfield, 24 June 5

**Genus AROGALEA Walsingham 1910**

- 331 **cratifasciella** Chambers Hampton, N.H., 19 April, 4 May; Oquossoc, 17 August; Augusta, 12 May 5

**Genus TELPHUSA Chambers 1872**

- 332 **aethiops** Humphreys & Westwood 20 localities, 30 May-30 July 51
- 334 **basifasciella** Zeller Hampton, N.H., 6 June; Southwest Harbor, 8 July 2
- 337 **belangerella** Chambers Oquossoc, 27 June, 8 July 2; Augusta, 22 May, 8 June, 10 July, 16 July, 18 July; Waldoboro, 1 July; Bar Harbor, 4 June 7, 12 June 6, 16 June, 17 June, 23 June, 12 September 3; Type locality of syn. *oronella* Walsingham, Orono 29
- 338 **palliderosacella** Chambers Waldoboro, 1 July 2; Oquossoc, 8 July; Mt. Bigelow, 11 July; Augusta, May, 19 emerged ex Chestnut, 14 May; Tremont, July; Bar Harbor, 5 July, 6 July; Passadumkeag, 25 June, 13 September 30
- 341 **quercinigracella** Chambers Bar Harbor, 23 June, 30 June 2
- 342 **querciella** Chambers 10 localities, 17 May-10 September; Augusta, 22 May reared 19
- 343 **fasciella** Chambers Squaw Brook, T2R6, 7 July; Greenville, 2 July, 8 July; Lincoln, 5 July, 7 July, 14 July; T15R9, 11 July; Buffalo, 30 July; Allagash, 28 July; Topsfield, 11 July 10
- 345 **sequax** Haworth Augusta, 1 April 1
- 347 **fuscopunctella** Clemens Oquossoc, 1 August; Dennistown, July, no date; Bar Harbor, 24 June; Lincoln, 10 July; Mt. Katahdin, 2 July 5
- 349 **praefixa** Braun Mt. Desert, 11 June; Lincoln, 19 July 2
- 351 **longifasciella** Clemens Lee, N.H., 28 May; Mt. Vernon, 27 April, 30 April, 2 May, 11 May 2, 19 May, 29 May 3, 30 May, 8 July; Augusta, 4 July; Enfield, 30 May 14

7954 **bicostomaculella** Chambers Camden, 29 April; Bar Harbor, 9 May, 10 July, 18 July, 23 September; Lincoln, 5 August 6

### Genus XENOLECHIA Meyrick 1895

7958 **ontariensis** Keifer Augusta, 11 July 1

### Genus GELECHIA Hübner 1825

7960 **branella** Busck 28 localities, 20 June–9 August 103

7960.1 species near **branella** 11 localities, 25 June–29 July 25

7965 **trialbamaculella** Chambers 11 localities, 4 July–26 August 13

7965.1 **epigaeella** Chambers This species which feeds on Trailing Arbutus (*Epigaea*) is claimed by some to be distinct

7965.2 **argutiola** Hodges (**AROGA** Busck 1914) Augusta, 1 June, 5 June, 10 June; Oquossoc, 14 July 4

7968 **thoracealbella** Chambers T8R19, 9 August 1

7972 **quinella** Zeller Hampton, N.H., 10 July det. Dietz 1

7975 **bimaculella** Chambers 19 localities, 5 July–1 August 32

7976 **coloradensis** Busck Jefferson, N.H., 31 May; Southwest Harbor, 26 August; Passadumkeag, 29 May; Millinocket, 5 July 4

7977 **viduella** Fabricius Mt. Washington, N.H., 5000 ft., 22 June; Greenbush, 8 July; Enfield, 8 August; Mt. Katahdin, 8 July; Klondike Basin (Mt. Katahdin), 7 July 6

7980 **lugubrella** Fabricius 26 localities 80

7991 species near **pauella** Busck Naples, 30 July; T18R12, 31 July 2

8000 **dyariella** Busck T15R9, 23 July; Kellyland, 3 August 2

8005 **continuella** Zeller 17 localities, 17 June–26 August 49

8013 **fondella** Busck 12 localities, 9 June–31 July 23

8014 **terminimaculella** Kearfott Richmond, 4 August; Mt. Vernon, 2 June; Bar Harbor, 2 July; Lincoln, 27 June, 2 July, 5 July; T9R5, 7 July; Passadumkeag, 28 May; Marion, 11 July 9

8020 **mediofuscella** Clemens Augusta, 23 May 2, 15 June, 19 June, 21 June; Mt. Vernon, 15 June; Greenville, 26 July; Bar Harbor, 27 June; Mt. Desert, 28 May, 1 June, 19 June; Passadumkeag, 28 May 2; Long A, 10 June 3; T11R8, 6 June 4; Ashland, 18 July 21

8021 **walsinghami** Dietz Augusta, 27 June, 28 June; Mt. Desert, 2 August; Greenbush, 8 July; Lincoln, 27 July; Millinocket, 17 July 6

8023.1 **virgella** Thunberg (syn. of **sexpunctella** Fabricius) (**LITA** Treitschke 1883) Southwest Harbor, 6 June, det. Hodges 1

324	<b>arenella</b> Forbes	Oquossoc, 10 July; Dennistown, 9 July, 10 July; Enfield, 20 August; Lincoln, 24 July; T6R11, 26 July; T7R17, 26 July; T18R12, 15 July, 2 August	9
326	species near <b>abella</b> Busck	Oquossoc, 10 July; Dennistown, 9 July, 10 July; Enfield, 20 August; Lincoln, 24 July; T6R11, 26 July; T7R17, 26 July; T18R12, 2 August	9
332	<b>variabilis</b> Busck	Hope, 31 August, 18 October; Enfield, 17 August	3
343	<b>ochreosuffusella</b> Chambers	13 localities, 17 June-6 August	23
345	<b>ochreostrigella</b> Chambers	Augusta, 28 June; Tim Pond, 23 July; Bar Harbor, 14 July; Ashland, 5 July, 15 July, 16 July, 28 July; T11R17, 11 July; Tramway, 11 July; Dennysville, 5 July; Marion, 9 July	11
351	<b>discoocellella</b> Chambers	Hampton, N.H., 10 July, 21 July, 1 August; Augusta, 5 October	4
354	<b>inquilinella</b> Busck	Bar Harbor, 14 June, ex willow	1
357	<b>rileyella</b> Chambers	Hampton, N.H., 17 June, 3 July, 6 July; Patten 6 August; T9R5, 7 July; Dennysville, 12 July	6
365	<b>versutella</b> Zeller	Jefferson, N.H., 26 June 3; Oquossoc, 30 June; Long A, 10 June	5
366	<b>lynceella</b> Zeller	28 localities, 15 June-2 August, reared ex <i>Populus tremuloides</i>	78
377.1	<b>asema</b> Clarke (syn. of <b>obscurusella</b> Chambers)	Ashland, 29 July	1
378	<b>nigrimaculella</b> Busck (syn. of <b>thoraceochrella</b> Chambers)	Augusta, 16 July; Tim Pond, 21 July; Chesuncook, 14 July; Bar Harbor, 26 August; Mt. Desert, 3 September; Lincoln, 7 July, 12 July, 17 July	11
380	<b>maculimarginella</b> Chambers	Naples, 3 August; Augusta, 3 August; Rockland, 7 July; Lincoln, 5 July, 7 July	6
381	<b>gilvomaculella</b> Clemens	Naples, 1 August	1
382	<b>serotinella</b> Busck	Unity, 12 June; Mt. Desert Is., 24 June, 15 July; Lincoln, 16 June	4
384	<b>pseudoacaciella</b> Chambers	Hampton, N.H., 3 June, 4 June, 6 June; Augusta, 10 June; Lincoln, 10 July, 23 July	6
385	<b>thoraceocrella</b> Chambers	Farmington, 12 July; Northeast on Oak	1
388	<b>fuscomaculella</b> Chambers	Lincoln, 10 July	1
04	<b>psilopterus</b> Barnes & Busck	T8R19, 9 August	1
05	<b>persicaeella</b> Murtfeldt	20 localities, 15 June-27 August	49
05 ±	<b>confusella</b> group	21 localities, 29 May-16 September	46
05.2	new species?	T8R5, 17 June, emerged ex <i>Ledum groenlandicum</i>	1
06	<b>fluvialella</b> Busck	36 localities, 26 May-15 September	98

**Genus GNORIMOSCHEMA Busck 1900**

- 8151 **septentrionella** Fyles Augusta, 5 September, 18 September; Bar Harbor, 29 August 2
- 8153 **gallaesolidaginis** Riley Augusta, 25 August, 28 August, 3 September, 5 September, 7 September, 8 September, 11 September, 14 September, 16 September 4; Lincoln, no dates (Clayton) 6; T8R19, 15 August, Dennysville, 6 August 20
- 8154 **salinaris** Busck Augusta, 30 August; Lincoln, 6 August; Millinocket, 16 July 3
- 8156 **gallaesterella** Kellicott Lee, N.H., 3 September, 9 September; Bar Harbor, 15 August; Lincoln, 15 August; Millinocket, 16 July; T8R19, 15 August 6
- 8160 **petrella** Busck Pittston Farm, 16 August; Hope, 8 October; Southwest Harbor, 28 August; Enfield, 25 August, 26 August, 27 August; Millinocket, 7 August, 12 August; Allagash, 25 July; Cross Lake, 12 July; Topsfield, 4 August 12
- 8165 **busckiella** Kearfott 11 localities, 16 June-8 September 18
- 8169 **alaricella** Busck Hampton, N.H., September no date, 16 September 2
- 8170 **banksiella** Busck 12 localities, 12 July-6 October 15
- 8182 **trioellella** Chambers N. Bridgton, 10 July 1
- 8191 **batanella** Busck Bar Harbor, 2 July, 16 July, 17 July, 24 July 4
- 8194 **detersella** Clemens (*atriplicella* F.V. Röslerstamm) Bar Harbor, 16 July, 21 July; Frederickton, N.B., 20 August 3
- 8195 **scutellariaeella** Chambers Augusta, 27 July, 7 August; Kingfield, 3 August; Millinocket, 3 August 4
- 8196 **lavernella** Chambers Hampton, N.H., 23 May, 31 May, 11 June, 17 June; Augusta, 16 May, 3 June; Liberty, 15 May; Bar Harbor, 18 August 8
- 8198 **artemisiella** Kearfott Georgetown, 8 July 2 emerged ex salt marsh plants; Dennistown, 8 August; Augusta, 28 May, 30 May 2, 1 July, 16 July, 7 August; Vassalboro, 29 May; Mt. Vernon, 8 July; Lincoln, 25 July; T13R12, 6 August; Allagash, 12 July; Dickey, 7 July 15

**Genus PHTHORIMAEA Meyrick 1902**

- 8211 **striatella** Murtfeldt Augusta, 18 July; Crystal, 6 June 2
- 8214 **operculella** Zellar Hampton, N.H., 25 May; Augusta, 8 October; Bar Harbor, 14 June 3
- 8219 **chenopodiella** Busck (syn. of *atriplicella* F.V. Röslerstamm) Oquosoc, 8 July; Dennistown, 22 July 5; Augusta, 3 May, 2 June, 15 June, 26 July, 18 August; Kingfield, 28 July 5, 30 July; Lincoln, 25 July; Ashland, 28 July 12

**Genus STOMOPTERYX authors (SYNCOPACMA Meyrick 1925)**

- 248 **palpilineella** Chambers Allagash, 7 July 1

**Genus DUVITA Busck 1916 (BATTARISTIS Meyrick 1914)**

- 255 **vittella** Busck Lee, N.H., 26 July; Sanford, 8 July; Tim Pond, 27 June; Allagash, 15 July 3
- 258 **nigratomella** Clemens Augusta, 21 June 7, 5 July, 30 July; Jefferson, 13 August; Bar Harbor, 28 June 2; Mt. Desert, 12 August; Kokadjo, 15 June; Franklin, 13 June; Patten, 21 July 16
- 259 **tahavusella** Forbes Augusta, 22 July 3, 27 July; Aurora, 11 July; Bar Harbor, 20 August; Mt. Desert, 25 July, 7 August; Lincoln, 16 July 9

**Genus COMSOLECHIA Meyrick 1918**

- 269 **rhoifruetella** Clemens Hampton, N.H., July and August; Augusta, 9 July 1
- 272 **niveopulvella** Chambers 16 localities, 8 July-9 August; Mt. Desert, 16 July 3 reared ex Aspen 44
- 273 **nonstrigella** Busck Bar Harbor, 13 August; Enfield, 18 June 2
- 275 **agrimoniella** Clemens Hampton, N.H., 10 July 2; Augusta, 4 August 2, 6 August, 17 August, 19 August 7

**Genus ANACAMPSIS Curtis 1827**

- 279 **conclusella** Walker Augusta, 29 June, 1 July 2, 8 July, 22 July, 23 July 3, 8 August 3; Caratunk, 4 July 2; Lincoln, 9 July, 22 July, 24 July; Bar Harbor, 3 July, 9 July, 10 July, 14 July, 17 July 2, 18 July, 24 July, 16 August; Mt. Desert, 12 June, 16 June, 29 August; Aurora, 11 July; T11R8, 1 July, 4 July 2 32
- 279.1 **tephriasella** Chambers Dennistown, 23 July 1
- 280 **innocueella** Zeller Mt. Vernon, 8 June; Mt. Desert, 4 July, 15 July, 24 July; Bar Harbor, 28 July; Lincoln, 28 July; Millinocket, 12 August; T11R8, 4 August 8

**Genus ONEBALA Walker 1864 (TRICHOTAPHE Clemens 1860)**

- 284 **alacella** Clemens Augusta, 12 July, 13 July, 18 July; Eustis, 17 July; Kokadjo, 14 July 5

**Genus THELYASCETA Meyrick 1923**

- 285 **purpureofusca** Walsingham Augusta, 10 June 2, 19 June, 29 June, 2 July, 4 July, 1 August; Vassalboro, 16 June; Mt. Vernon, 4 June; Mt. Desert, 26 June; Greenbush, 15 July; Allagash, 5 July; Marion, 6 July, 11 July 15

**Genus ANARSIA Zeller 1839**

- 8288 **lineatella** Zeller Devil's Den Mt. (Porter), 16 May 1

**Genus TELEPHILA Meyrick**

- 8290 **vacciniella** Busck (**DICHOMERIS** Hübner 1818) Popham Beach, 5 August; Norway, 21 October; Augusta, 17 August; Bar Harbor, 12 September 4

**Genus DICHOMERIS Hübner 1818**

- 8296 **ligulella** Hübner Augusta, 17 May 5, 8 August, 10 August; Bar Harbor, 26 June, 25 September 9
- 8298 **ventrella** Fitch Augusta, 4 August, 9 August 2
- 8299 **marginella** Fabricius Augusta, 16 July 5, 21 July 2; Bar Harbor, 30 June 2, 8 July 2, 17 July, 23 July, 4 August; Mt. Desert, 22 July; Lincoln, 20 July; Dennysville, 12 June; Marion, 18 July 18
- 8303 **georgiella** Walker Augusta, 5 September; Jackman, 25 July; Long A, 10 July 3
- 8304 **punctidiscella** Clemens Hampton, N.H., 15 June, 20 June, 22 June; Augusta, 10 August; Smithfield, 25 June; Passadumkeag, 23 May 6
- 8305 **punctipennella** Clemens (**ANORTHOSIA** Clemens 1860) Portland, 13 July; Augusta, 12 July, 22 July, 27 July; Bar Harbor, 11 June, 14 July, 17 July, 20 July 3, 28 July 2, 27 August; Southwest Harbor, 28 May, 26 August; Millinocket, 20 July 17
- 8306 **bipunctella** Walsingham Popham Beach, 5 August; Norway, 21 October; Brunswick, 14 September, 17 September; Augusta, 10 June, 9 August 2, 16 September; Bar Harbor, 26 April 2, 20 September; Orono, no date 12

**Genus TRICHOTAPHE Clemens 1860**

- 8313 **trimaculella** Chambers Bar Harbor, 30 June, 25 July, 13 August 3
- 8314 **fernaldella** Busck 13 localities, 19 May–12 July 21
- 8315 **serrativittella** Zeller Augusta, 27 August, 4 October; Mt. Vernon, 1 July 3
- 8317 **simpliciella** Busck Naples, 30 July; Bar Harbor, 17 August; Mt. Desert, 11 August 3
- 8318 **inserrata** Walsingham Lincoln, 14 July, 16 July, 17 July 3
- 8319 **flavocostella** Clemens Augusta, 12 July, 14 July 2, 15 July, 30 July; Smithfield, 5 August; Greenville, 15 July; Greenbush, 8 July, 15 July 3, 17 July; Lincoln, 23 July; T8R5, 11 July 2; Patten, 20 July; Ashland, 20 July 17



8320	<b>eupatoriella</b> Chambers (syn. of <b>setosella</b> Clemens)	Lincoln, 6 July	1
8322	<b>setosella</b> Clemens	14 localities, 10 July–27 August	43
8324	<b>costarufuella</b> Chambers	Augusta, 11 August; Vassalboro, 15 July, 30 July; Bar Harbor, 30 July 2, 7 August, 8 August; Lincoln, 21 July, 29 July, 6 August; Dennysville, 24 July, 5 August	14
8325	<b>washingtoniella</b> Busck	17 localities, 18 June–23 August	52
8328	<b>trinotella</b> Busck	Augusta, 11 July, 13 July, 18 July, 6 August; Bar Harbor, 3 July, 18 July, 12 August; Enfield, 6 August; Lincoln, 1 July, 14 July; T9R5, 20 July, 25 July	12
8329	<b>leuconotella</b> Busck	Dennistown, 22 July; Bar Harbor, 18 July, 29 July, 8 August, 12 August; Lincoln, 29 July; St. Francis, 17 July, Allagash, 7 July	8
8330	<b>juncidella</b> Clemens	Fredericton, N.B., 22 July; Tim Pond, 19 July; Jackman, 26 July; Lincoln, 14 July; Millinocket, 19 July	5
8330.1	species near <b>juncidella</b>	13 localities, 28 June–18 August	64
8331	<b>levisella</b> Fyles	30 localities, 24 June–18 August	88

#### **Genus OEGOCONIA Stainton 1854 (in BLASTOBASIDAE MONA)**

8332	<b>quadripuncta</b> Haworth	Augusta, July 1–30, 16 specimens, emerged from elm leaves; Long A, 10 July; Millinocket, 25 July; Allagash, 14 July, 21 July	20
------	-----------------------------	--	----

#### **Genus PLATYEDRA Meyrick 1895**

8333.1	<b>vilella</b> Zeller (syn. of <b>subcinerea</b> Haworth)	Portsmouth, N.H., 26 July	1
--------	---	---------------------------	---

#### **Genus SCEPTEA Walsingham 1891 (in BLASTOBASIDAE MONA)**

8341	<b>aberratella</b> Busck (syn. of <b>aequepulfella</b> Chambers)	Lincoln, 12 July	1
------	--	------------------	---

#### **Genus GLYPHIDOCERA Walsingham 1891**

8342	<b>lactiflosella</b> Chambers	N. Bridgton, 7 July; Lincoln, 6 July 3, 8 July, 10 July 2, 13 July, 17 July 2, 18 July, 20 July, 24 July 3, 29 July, 2 August	18
8343	<b>dimorphella</b> Busck	Hampton, N.H., 7 July, 9 July; Patten, 14 July	3
8344	<b>meyrickella</b> Busck	Lincoln, 11 July, 17 July, 21 July	3
8345	<b>speratella</b> Busck ( <b>septentrionella</b> Busck in <b>BLASTOBASIDAE MONA</b> )	N. Bridgton, 7 July; Augusta, 4 August; Lincoln, 7 July 2, 8 July 2, 10 July 3, 12 July, 14 July, 20 July 2, 22 July 4, 23 July 2, 29 July 2, 31 July; T6R8, 16 July; Topsfield, 16 July	23

## Family OECOPHORIDAE

## Genus DASYCERA Stephens 1829 (MATHILDANA Clarke 1941)

- 8353 **newmanella** Clemens Hampton, N.H., 17 May, 18 June; Wales, 25 June 3  
 8353.1 **flipria** Hodges distributed northern New England, southward

## Genus DECANTHA Busck 1908

- 8358 **boreasella** Chambers Bar Harbor, 28 July (**borkhauseni** Zeller is European) 1

## Genus SCHIFFERMULLERIA Hübner 1826

- 8359 **lucidella** Busck (**FABIOLA** Busck 1908) Augusta, 10 July, 15 July, 17 July, 19 July, 21 July, 31 July; Chesuncook, 13 July; Lincoln, 14 July; Millinocket, 5 August 9  
 8361 **argenticinctella** Clemens (**CALLIMA** Clemens 1860) Hampton, N.H., 1 July 2, 15 July, 1 August; Augusta, 9 July, 30 July, 3 August; Lincoln, 12 July; Tim Pond, 17 July, Topsfield, 18 July 10  
 8362 **edithella** Busck (**FABIOLA** Busck 1908) Hampton, N.H., 6 November; Center Harbor, N.H., July 2  
 8365 **quadrimaculella** Chambers (**BRYMBLIA** Hodges 1974) Oquossoc, 14 July; Weld, 2 July; Chimney Pond (Mt. Katahdin), 29 June 2 4  
 8367 **coloradella** Walsingham (**POLIX** Hodges 1974) 11 localities, 20 April-5 August 24

## Genus ENDROSIS Hübner 1825

- 8368 **lactella** Dennis & Schiffermuller (syn. of **sarcitrella** Linnaeus) (white-shouldered house moth) Augusta, 14 September 1

## Genus BORKHAUSENIA Hübner 1825

- 8369 **ascriptella** Busck (**CAROLINA** Clarke 1941) 13 localities, 11 July-12 August 32

## Genus MARTYRINGA Busck 1902

- 8380 **latipennis** Walsingham Lee, N.H., 22 July; Orono, Type locality, flies in July and August 1

## Genus MACHIMIA Clemens 1860

- 8383 **tentoriferella** Clemens Augusta, 5 September, 10 September, 15 September, 16 September 3; Bar Harbor, 3 August, 1 September, 6 September, 14 September, 20 September; Southwest Harbor, 8 September; Mt. Desert, 31 August, 12 September; Mt. Katahdin, 5 September; Orono is type locality for synonym **fernaldella** Chambers 15

**Genus EUMEYRICKIA Busck 1902 (syn. of EIDO Chambers 1873)**

- 8390 **trimaculella** Fitch 23 localities, 4 April–23 August; breeds in bracket fungi 34

**Genus DEPRESSARIA Haworth 1811**

- 8393 **alienella** Busck 12 localities, 27 March–22 September; Tomhegon emerged 27 March 14
- 8393.1 species Hampton, N.H., 15 June, 17 June 2
- 8404 **heracliana** auth. (**pastinacella** Duponchel) Dennistown, 19 August; Augusta, larva feeds on parsnip; Bar Harbor, 7 June; T15R13, 30 July, 8 August; Jonesboro, 29 April 6
- 8404.1 **eleanorae** Clarke Eustis, 8 August; southeastern Maine, no date, MONA fascicle 6.2 Hodges 1974, p. 66 2
- 8405 **grotella** Robinson (NITES Hodges 1974) 12 localities, 20 April–30 August 25
- 8405.1 **atrocapitella** McDunnough (NITES Hodges 1974) Lincoln, 2 April, 3 April 2
- 8406 **betulella** Busck (NITES Hodges 1974) 11 localities, 15 April–17 October 24
- 8406.1 **ostryella** McDunnough (NITES Hodges 1974) 10 localities, 15 April–26 August; Augusta, emerged 15 April 12
- 8407 **maculatella** Busck (NITES Hodges 1974) Rumford, 17 June; Pittston Farm, 16 August; Lincoln, 27 July, 28 July, 29 July, 4 August, 6 August 8
- 8408 **cinereocostella** Clemens Reported from Nova Scotia, south and west, July, August, Hodges

**Genus AGONOPTERIX Hübner 1825**

- 8409 **atrodorsella** Clemens Augusta, 5 September, 5 October; Brunswick, 21 February 2; Amherst, 8 November; Bar Harbor, 24 March, 12 April, 27 April 2, 1 May 2, 19 October 12
- 8413 **argillacea** Walsingham 10 localities, 9 April–23 September 23
- 8417.1 **canadensis** Busck Augusta, 25 April; Northeast Harbor, 2 June; Bar Harbor, 2 June; Long A, 29 July; Allagash, 18 July 5
- 8420 **flavicomella** Engel 13 localities, 5 June–27 August 22
- 8430 **clemensella** Chambers Oquossoc, 25 July; Augusta, 5 April; Mt. Vernon, 27 April; China, 17 October; Bar Harbor, 10 October; Enfield, 7 April, 10 April, 15 October; Allagash, 28 July 9
- 8433 **canella** Busck (**DEPRESSARIODES** Turati 1925) New Hampshire, no date 1

- 8434 **sciadop**a Meyrick (syn. of **canadensis** Busck) Jefferson, N.H., 21 October, 30 November; Oquossoc, 28 August; Kokajo, 23 July; Seboomook, 28 July; Chesuncook, 25 July; T15R13, 26 July; Indian Town, 10 December, Jonesboro, 15 July 9
- 8436 **ciniflonella** Lienig & Zeller (**DEPRESSARIODES** Turati 1925) Oquossoc, 10 July; New Brunswick, no date 2
- 8437 **lythrella** Walsingham Kingfield, 13 August; Enfield, 20 August, 25 August; Millinocket, 13 August; T9R5, 1 August; T8R19, 7 August 6
- 8437.1 **arcuella** Clarke (syn. of **lythrella** Walsingham) Orrington, 25 July; New Brunswick, July and August; Nova Scotia, July and August, 27 29
- 8439 **curvilineella** Beutenmuller Augusta, 20 August, 15 September, 3 October; Vassalboro, 16 October; T8R19, 15 August; Indian Town, 16 September 7
- 8440 **pulvipennella** Clemens Augusta, 14 May; Mt. Vernon, 15 May; S. China, 12 September; Freeport, 16 August; Bar Harbor, 12 April 2, 16 April, 19 April 3, 4 May, 10 August, 12 August, 14 September, 8 October; Mt. Desert, April, 6 May, 1 June, 7 October; Lincoln, 14 May; 5 July; Indian Town, no date; Kellyland, 15 July 22
- 8443 **feraldella** Walsingham (syn. of **walsinghiamiella** Busck) Oquossoc, 27 June; Augusta, 11 April, 13 October; base of Mt. Katahdin, 3 September; Bar Harbor, 28 April, 10 May, 12 May, 1 August, 26 August, 22 September, 6 October, 5 November, 14 November; Mt. Desert, April, 25 September, 29 September; Northeast Harbor, 2 June; Amherst, 31 October 21
- 8444 **nigrinotella** Busck Bradley, 25 September 1
- 8446 **fulvus** Walsingham (**DEPRESSARIODES** Turati 1925) Portland, 5 July; Kingfield, 18 August; Greenville, 31 July 3
- 8448 **robiniella** Packard Augusta, 8 July, 15 July; Lincoln, 5 July, 25 July, 28 July 5
- 8448.1 **thelmae** Clarke Hollis, 16 July; Kennebunk, no date; Augusta, 30 June 2, 10 July, 19 July, 22 July, 17 August, 1 September, 18 September; Paris, 3 September; Bar Harbor, 12 October; Lincoln, 5 July, 18 July, 27 July, 29 July 17
- 8451 **gelidella** Busck Seboomook, 5 August; Chesuncook, 27 July; Lincoln, 18 July; T9R5, 25 July; Kellyland, 25 July 5
- 8452 **nebulosa** Zeller Augusta, 10 January 1

#### Genus EPIGRAPHIA Stephens 1829 (SEMIOSCOPIS Hübner 1825)

- 8459 **packardella** Clemens Farmington, 7 May, 15 May, 20 May, 23 May, 8 June; Mt. Vernon, 30 April 4; Augusta, 7 May, 14 May, 16 May, 20 May, 27 May, 30 May; Vassalboro, 15 May, 18 May, 21 May, 24 May, 8 June, 5 July; Bar Harbor, 12 May 2; Long A, 10 June; St. Francis, 27 May 25

**Genus SEMIOSCOPIS Hübner 1826**

- 8460 **inornata** Walsingham Augusta, 24 April 2, 25 April, 4 May, 7 May, 13 May, 20 May; Mt. Vernon, 11 April, 16 April, 30 April, 17 May, 19 May; Farmington, 11 April, 26 April, 5 May 2; Vassalboro, 26 April 2; Bar Harbor, 30 March, 20 April, 27 April, 28 April; Mt. Desert, 25 April 24
- 8461 **megamicrella** Dyar (*braunae* Clarke is a synonym) Kezar Falls, 17 May; Farmington, 4 May; Mt. Vernon, 2 May 3; Augusta, 18 April, 20 April, 24 April, 25 April, 11 May, 12 May; Vassalboro, 17 April, 27 April, 15 May; Belfast, 29 April; Bar Harbor, 23 April, 26 April, 30 April 18
- 8463 **aurorella** Dyar Jefferson, N.H., 29 April; Farmington, 26 April 2, May; Mt. Vernon, 16 April, 20 April 2; Vassalboro, 1 May, 22 May; Augusta, 20 April, 1 May; Bar Harbor, 2 May; Lincoln (Clayton) no date 13
- 8463.1 **species** Augusta, 4 May; Mt. Vernon, 30 April 2
- 8464 **allenella** Walsingham (**BIBARRAMBLA** Clarke 1941) Smithfield, 7 July 2; Seboomook, 8 July; Kingfield, 11 July; Bar Harbor, 11 June, 18 June, 25 June, reared ex birch, 5 July, 9 July, 11 July, 18 July; Mt. Desert, 11 June, 16 July; Enfield, 7 August; Indian Town, 26 August 21

**Genus GERDANA Busck 1908**

- 8465 **caritella** Busck Augusta, 1 July; Tim Pond, 17 July; Chesuncook, 27 July; Canaan, 9 specimens, June–August, reared ex witch's broom of fir; Lincoln, 23 July 13

**Genus PSILOCORSIS Clemens 1860**

- 8467 **reflexella** Clemens Augusta, 30 June, 12 July; Aurora, 11 May 3, 18 May 3, all emerged ex beech; Mt. Desert Is., 24 May; Lincoln, 24 July, 26 July; Charlotte, 18 June and 19 June reared ex beech 13
- 8470 **fletcherella** Gibson (syn. of **reflexella** Clemens) Augusta, 29 May and 6 June reared ex *Tilia* 2
- 8471 **obsoletella** Zeller (syn. of **cryptolechiella** Chambers) Hampton, N.H., 16 July; Augusta, 17 May reared ex white oak; Boothbay Harbor, June 5 specimens reared ex *Myrica pensylvanica*; Bar Harbor, 16 July; Lincoln, 11 April, 15 July; T15R9, 17 July; Masardis, 12 April, emerged ex birch; Princeton, 23 May, emerged ex oak 13
- 8472 **faginella** Chambers (syn. of **cryptolechiella** Chambers) 15 localities, 4 June–10 September; Windsor, 8 April, 11 April reared ex white oak 26
- 8473 **quercicella** Clemens 10 localities, 3 July–18 August; Princeton, 18 May emerged 49
- 8474 **cryptolechiella** Chambers in MONA Hodges says it occurs in Maine and southward

Family **BLASTOBASIDAE**Genus **BLASTOBASIS** Zeller 1855

- 8478 **hulstella** Dietz Augusta, 29 May, 26 July; Mt. Vernon, 4 July, 8 July; Bar Harbor, 5 July, 7 July, 8 July 2; Mt. Desert, 17 June, 5 July, 7 July 2; Lincoln, 17 July 2, 19 July, 23 July, 1 August, 5 August; Millinocket, 19 June 15
- 8478.1 **maritimella** McDunnough Lincoln, 20 July 2; Topsfield, 11 July
- 8480 **plummerella** Dietz Greenville, 3 August; Kokadjo, 9 July; Mt. Vernon, 8 July; Brooklin, 14 July; Tremont, 7 July; Bar Harbor, 12 June; Mt. Desert, 6 July; Lincoln, 5 July 2, 6 July 3, 7 July, 10 July 2, 17 July, 19 July, 21 July; T9R5, 26 July; Shin Pond, 12 July; T11R8, 8 July, 29 July; Kellyland, 30 July 24
- 8481 **sagitella** Dietz Oquossoc, 10 July, 14 July; Bristol, no date; Kokadjo, 9 July; Greenville, 8 July 2, 25 July; Lincoln, 5 July 2, 6 July, 10 July, 12 July 2, 14 July, 17 July, 28 July; T8R19, 18 July; Cross Lake, 6 July 18
- 8482 **distinctellus** Dietz Lincoln, 7 July, 8 July, 14 July, 15 August 4
- 8483 **villella** Busck (**GLYPHIPTERYX** Curtis 1827) Sebago Lake, 15 August; Augusta, 7 July, 28 July; Skowhegan, emerged 22 April ex witch's broom on larch; Greenbush, 8 July; Lincoln, 10 July, 11 July; T11R8, 28 July 8

Genus **BLASTOBASOIDES** McDunnough 1961

- 8485.1 **differtellus** McDunnough T11R8, 29 July 1

Genus **ZENODOCHIUM** Walsingham 1908

- 8486- **citricolella** Chambers-**coccivorella** Chambers? Mt. Vernon, 1 July; Lincoln, 12 July (These species were described from Florida) 2

Genus **VALENTINIA** Walsingham 1907

- 8488 **glandulella** Riley Augusta, 9 July, 23 July, 25 July, 28 July, 30 July, 31 July; Mt. Vernon, 8 June; E. Andover, 13 June emerged ex gall on oak; Chimenticook, 6 July; Bar Harbor, 2 July ex acorn, 9 July ex acorn 1
- 8489 **fractilinea** Zeller Farmington, 13 July; T15R9, 20 July; Topsfield, 11 July
- 8490 **quaintancella** Dietz Hollis, 27 June; Augusta, 20 May, 7 July, 7 August, 12 August; Trenton, 7 July; Bar Harbor, 30 May emerged ex acorn, 2 July, emerged ex acorn, 10 July 2, 11 July, 27 July; Lincoln, 26 May; Sullivan, 10 June; Vassalboro, 23 June; Farmington, 18 May 14
- 8495 **repartella** Dietz Lincoln, 5 July; Ashland, 7 July

**Genus EURESIA Dietz 1910**

- 8496 **pulchella** Dietz Mt. Vernon, 5 July; Farmington, 24 July 2

**Genus CALOSIMA Dietz 1910**

- 8497 **argyrosplendella** Dietz Westbook, 30 June; Lincoln, 5 July, 20 July; T17R4, 16 July 4

**Genus HOLCOCERA Clemens 1863**

- 8500 **dives** Dietz Portland, 5 July; Augusta, 19 June, 27 June, 30 June; Vassalboro, 21 June; Mt. Vernon, 1 July; Farmington, 16 June, 18 July; Greenville, 8 July, 11 July; Lincoln, 3 July, 6 July, 8 July 2, 9 July 2, 13 July, 14 July, 25 July; Long A, 10 June 4, 7 July 24
- form **basipallidella** McDunnough Hampton, N.H., no date 1
- 8501 **aphidiella** Walsingham Lincoln, 7 July 1
- 8502 **estriatella** Dietz 12 localities, 10 June–24 July 25
- 8505 **purpurocomella** Clemens 21 localities, 24 May–5 August 105
- 8506 **ochrocephala** Dietz Augusta, 9 July; Chesuncook, 11 July; Lincoln, 5 July, 9 July, 14 July, 31 July; Buffalo, 3 August; Topsfield, 11 July; Marion, 12 July 9
- 8508 **modestella** Clemens Oquossoc, 14 July; Dennistown, 10 July; Greenville, 10 July; Mt. Vernon, 1 July; Lincoln, 5 July 2, 8 July, 10 July, 6 August 9
- 8510 **immaculella** McDunnough (**HOLCOCERINA** McDunnough 1961) 17 localities, 11 April–12 August, Bar Harbor, emerged March through May 3, ex Cecidomyid galls on spruce, Orono, emerged 11–14 April 3 67
- 8511 **chalcfrontella** Clemens (**HOLCOCERINA** McDunnough 1961) 15 localities, 2 June–29 July, Bar Harbor 2 bred June, 5 June bred ex witch's broom on larch 32
- form **minorella** Dietz Augusta, 10 June; Mt. Vernon, 1 July; Farmington, 8 September; Lincoln, 5 July, 7 July 2, 9 July, 17 July, 22 July 2; T11R8, 9 July 11
- form **fumerella** Dietz Augusta, 10 June, 6 July 2, 9 July 2; Vassalboro, 2 July; Mt. Vernon, 30 June; Oquossoc, 13 July; Coburn Gore, 27 July; T9R5, 14 July; Topsfield, 10 July; Kellyland, 9 July, 19 July 13
- 8512 **confluentella** Dietz (**HOLCOCERINA** McDunnough 1961) 24 localities, 23 June–1 August 75
- 8513 **busckiella** Dietz 21 localities, 4 July–14 August 118
- 8515 **plagiatella** Dietz 10 localities, 30 June–6 August 19
- 8516 **livorella** Zeller Augusta, 18 July; Patten, 13 July; Kellyland, 4 July 3

8518	<b>maligemmella</b> Murtfeldt	Farmington 7 June, 13 June; Lincoln, 5 July, 10 July; Topsfield, 13 July; Kellyland, 20 July	(
8519	<b>gibbociliella</b> Clemens	Augusta, 20 May, 4 June, 26 July, 12 August; Vassalboro, 15 June; Mt. Vernon, 1 June; Lincoln, 17 June, 14 July, 28 July; Millinocket, 7 July; Houlton, 16 June; Vanceboro, 5 July	17
8520	<b>funebra</b> Dietz	12 localities, 18 June–27 July	27
8522	<b>augusti</b> Heinrich	Oquossoc, 22 June, 25 June, 27 June, 6 July; Augusta, 6 June; Bar Harbor, emerged 22 March, 29 April, 2 July ex cecidomyid galls on spruce, 5 June ex witch's broom on larch, August–September a number of specimens ex cecidomyid galls on spruce; Garland, 18 June; Greenbush, 8 July; Passadumkeag, 24 June; Lincoln, 14 July; Ashland, 29 June; Marion, 9 July	29 plus
8522.1	<b>lepidophaga</b> Clarke	Oquossoc, 11 July, 14 July 3; Kokadjo, no date	5
8524	<b>boreasella</b> Dietz	20 localities, 16 May–26 August	76
8525	<b>nucella</b> Walsingham	Farmington, 19 June; Lincoln, 10 July, 17 July	3
8527	<b>elyella</b> Dietz	11 localities, 5 July–6 August	75
8529	<b>inclusa</b> Dietz	Hampton, N.H., 27 June; Dennistown, 9 July; Lincoln, 8 July, 10 July, 19 July	5
8531	<b>messelinella</b> Dietz		
	form <b>spoliatella</b> Dietz	Bar Harbor, 3 August	1
8539	<b>ursella</b> Walsingham	Bar Harbor, no date, 25 July, specimen compared at MCZ	2
8540	<b>punctiferella</b> Clemens	13 localities, 1 July–6 August	25
	form <b>subsenella</b> Zeller	Greenville, 10 July	1
	form <b>texanella</b> Walsingham	Pittston Farm, 12 July; Mt. Katahdin, 9 July; Lincoln, 13 July	3
8542	<b>vestaliella</b> Dietz	Skowhegan, 24 June; Lincoln, 22 July	2
8543	<b>tartarella</b> Dietz	Dennistown, 9 July; Seboomook, 14 July; Kokadjo, 12 July; Lincoln, 7 July, 8 July, 11 July, 13 July, 14 July, 17 July 2, 22 July, 23 July, 27 July, 31 July; T11R8, 29 July 2; Topsfield, 20 July	18
8544	<b>pusilla</b> Dietz	Lincoln, 15 July, 23 July, 27 July	3
8546	<b>melanostriatella</b> Dietz	14 localities, 19 June–2 August	23

### Genus **HYPATOPA** Walsingham 1907

8548.1	<b>titanella</b> McDunnough	Jefferson Notch, N.H. no date; Lincoln, 14 July; T11R8, 13 July	3
--------	-----------------------------	---	---



**Genus PLOIOPHORA Dietz 1900**

- 8548.2 species? Smithfield, 23 June, 25 June 3; Belgrade, 19 June, 20 June 6
- 8551 **ampla** Dietz Augusta, 30 June, 6 July, 12 July 2, 16 July; Passadumkeag, 25 June; Lincoln, 27 June, 5 July, 8 July 2, 9 July, 12 July 2, 17 July, 24 July 15
- 8552 **fidella** Dietz Westbrook, 30 June; Augusta, 21 June, 27 June; Mt. Vernon, 24 June, 8 July; Lincoln, 4 July, 5 July 9, 7 July 7, 8 July 2, 9 July 4, 11 July, 14 July 3, 17 July 2, 20 July 2, 25 July 32

**Genus PIGRITIA Clemens 1860**

- 8553 **confusella** Dietz Augusta, 6 August, 17 August 2, 21 August; Lincoln, 7 July, 8 July, 17 July 7
- 8554 **purpurella** Dietz Augusta, 7 July, 25 July, 30 July, 8 August 7; Smithfield, 25 June; Lincoln, 5 July, 8 July, 17 July, 18 July; Millinocket, 12 July, 20 July 17
- 8555 **basilarella** Dietz Augusta, 6 August, 8 August 2; Mt. Vernon, 5 July; Lincoln, 18 June, 5 July, 8 July, 9 July, 12 July, 15 July, 16 July; Edmunds, 1 August 12
- 8556 **laticapitella** Clemens Augusta, 8 August, 21 August; Bar Harbor, 23 June, 8 July; Lincoln, 5 July, 6 July, 14 July, 22 July; Millinocket, 17 July; T9R5, 26 July; Clayton Lake, 14 July 11
- 8559 **angustipennella** Dietz Lincoln, 21 July 1
- 8562 **spoliatella** Dietz Lincoln, 5 July 1
- 8563 **obscurella** Dietz Augusta, 27 July; Mt. Vernon, 24 June; Lincoln, 1 July, 5 July, 12 July 5

**Genus EPIGRITIA Dietz 1900**

- 8564 **ochrocomella** Clemens Augusta, 27 July; Mt. Vernon, 24 June; Lincoln, 5 July, 8 July 2 5

**Genus DRYOPERIA Coolidge 1909**

- 8565 **occidentella** Dietz Kingfield, 22 July; Lincoln, 12 July 2
- 8566 **tenebrella** Dietz Sebago Lake, 3 August; Madison, 7 August; Eustis, 27 July; T6R7, 26 July; Augusta, 27 July; Lincoln, 18 July 6
- 8568 **grisella** Dietz Augusta, 12 July, 8 August, 27 August; Sebago Lake, 10 August; Lincoln, 27 June, 5 July 2, 6 July, 9 July, 11 July, 19 July, 28 July; Long A, 10 June; Millinocket, 16 July 14
- 8569 **fuscosuffusella** Dietz Augusta, 25 July; Lincoln, 5 July, 14 July 3
- 8570 **murtfeldtella** Chambers Lincoln, 25 July 1.

- 8572 **discopunctella** Dietz Lincoln, 7 July 1
- 8573 **ochreella** Clemens Augusta, 17 August; Lincoln, 8 July, 6 August; Mil-  
linocket, 23 July; Topsfield, 16 July 4

### Genus PSEUDOPIGRITIA Dietz 1900

- 8575 **dorsomaculella** Dietz Augusta, 8 August 1
- 8577 **fraternella** Dietz Lincoln, 25 July 1

## Family STENOMIDAE (OECOPHORIDAE)

### Genus STENOMA Zeller 1839 (ANTAEOTRICHIA Zeller 1854)

- 8582 **schlaegeri** Zeller Augusta, 25 June; Greenville, 10 July; Bar Harbor, 3  
July; Lincoln, 5 July, 10 July; T11R8, 5 July 2, 10 July, 13 July 2;  
Marion, 11 July 11
- 8584 **unipunctella** Clemens Naples, 3 August, 12 August 2
- 8585 **algidella** Walker (syn. of *leucillana* Zeller) Oquossoc, 14 July, 19 July;  
Greenville, 12 July 2; Lincoln, 8 July, 14 July; T11R8, 13 July; T15R13,  
22 July 8

### Genus MENESTA Clemens 1860

- 8602 **tortriciformella** Clemens Hampton, N.H., det. Dietz 3
- 8603 **melanella** Murtfeldt Hampton, N.H., det. Dietz 1
- 8604 **albaciliaeella** Chambers Hampton, N.H., 29 June 1

## Family ETHMIIDAE (OECOPHORIDAE)

### Genus ETHMIA Hübner 1819

- 8622 **semilugens** Zeller reported in Durham, Lee & Jefferson, N.H. 3
- 8622.1 **bipunctella** Fabricius Lee, N.H., 31 August; Jefferson, N.H., 8 June;  
Mt. Vernon, 2 June; Kennebunk, no date 4
- 8627 **longimaculella** Chambers Montreal, Que., a series; Greenville, 12 July 1
- 8629 **zelleriella** Chambers Montreal, Que., a series

## Family GLYPHIPTERYGIDAE

### Genus ANTHOPHILA Haworth 1811

- 8643 **fabriciana** Linnaeus Quebec, this nettle feeder is established in Quebec,  
April-August; Augusta, 22 September, 28 September; Boothbay Harbor,  
27 July; Bar Harbor, 17 specimens, July-September, apple and thorn  
skeletizer, 24 April, flying about apple trees; Mt. Desert, 6 specimens 25

**Genus ALLONOMYA Busck 1904 (CHOREUTIS Hübner 1825)**

- 8645 *vicarialis* Zeller (syn. of *diana* Hübner) Dennistown, 31 July; Pittston Farm, 5 August; Seboomook, 28 August 2; Augusta, 21 September; E. Machias, 23 July 6
- 8646 *diana* Hübner 12 localities, 29 April-8 October 45

**Genus CHOREUTIS Hübner 1825**

- 8649.1 *virginiella* Clemens (syn. of *PROCHOREUTIS inflatella* Clemens) Pop- ham Beach, 5 September; Augusta, 4 July 3, 10 July, 5 August 2, 27 August, 30 August, 31 August; Vassalboro, 8 September; Greenville, 18 July; Chesuncook, 7 July, 24 July; Brownville, 14 October; Lincoln (Clayton) no date; T9R5, 19 July; Bar Harbor, 5 July, 25 August 2; Indian Town, 9 August, 18 August; Topsfield, 14 July, 18 July 24
- 8662 *gnaphaliella* Kearfott (*TEBENNA* Billberg 1820) Augusta, 10 June, 6 July 6 7
- 8663 *onustana* Walker (*TEBENNA* Billberg 1820) 12 localities, 5 June-6 Sep- tember 41

**Genus GLYPHIPTERYX Hübner 1825**

- 8670 *impigritella* Clemens 12 localities, 17 May-5 October 42
- 8670.1 *species* Sidney, 21 May; Augusta, 30 May 3; Enfield, 20 May 9
- 8673 *californiae* Walsingham Whitefield, N.H., 23 May 3; Enfield, 20 May 4
- 8679 *circumscriptella* Chambers Dennistown, 24 July; Augusta, 4 July 2

**Family AEGERIIDAE (SESIIDAE)**

Records on Mt. Blue and Dryden of unusual species are by Mr. Gerd Heinrich taken in his Berlese aerial net trap set for Ichneumoninae. Aegeriidae must often fly high and unknown to collectors.

**Genus BEMBEZIA Hübner 1819 (PENNISSETTA Dehne 1850)**

- 8684 *marginata* Harris 11 localities, 28 July-28 August 36

**Genus ALCATHOE Henry Edwards 1882**

- 8685 *caudata* Harris 11 localities, 8 July-4 September; Millinocket emerged July; Mt. Katahdin, 4400 ft., 8 July 15

**Genus AEGERIA Fabricius 1807 (SEZIA Fabricius 1775)**

- 8690 *tibialis* Harris Type locality New Hampshire; Dublin, N.H., no date; Augusta, 13 August; Mt. Desert, pupal shell, det. Engelhardt 2

**Genus SANNINOIDEA Beutenmueller 1896 (SYNANTHEDON Hübner 1819)**

- 8691 **exitiosa** Say? (Peach Tree Borer) This species has girdled peach or apricot trees twice in Roland de Coteau's planting in South Paris.

**Genus SYNANTHEDON Hübner 1819**

- 8697 **bibionipennis** Boisduval Mt. Washington, N.H., no date
- 8705 **corni** Henry Edwards Hampton, N.H., 16 June, 24 June; Denmark, 26 July; Mt. Katahdin, 3 July; Wales, 23 June; Dryden, no date; Augusta, August; Bar Harbor, 10 July, 21 July, 23 July 1
- 8706 **acerrubri** Engelhardt Hampton, N.H., 14 June, 28 July, 31 July; T3R10, 22 July; Bar Harbor, 23 July; Mt. Katahdin, 22 July; T9R5, 19 July; T11R8, 13 July
- 8708 **tipuliformis** Linnaeus Mt. Blue, 23 July; Augusta, 25 July 3; Waterville, 2 May, reared, 2 September, emerged; Skowhegan, 12 June, pupa; Orono, no date, 2 pairing on currant; Bar Harbor, no date; Machias, 17 July 1
- 8716 **bolteri** Henry Edwards Ste. Anne, Que., 4 July 2; Shawbridge, Que., 15 July; Lanore, Que., 20 July
- 8718 **fulvipes** Harris Bar Harbor, 17 June, 20 June; Paris, 16 June; S. China, 26 June; Mt. Blue, early June; Caratunk, 24 June; Passadumkeag, June; Enfield, 23 June; Salem, 13 June, bred from white birch bolts; Mt. Katahdin, 2250 ft., 2 July 10
- 8720 **pictipes** Grote & Robinson 10 localities, 18 June–21 August; Vassalboro, 8 July, pupal shell; Base of Mt. Katahdin, pupal shell in wild cherry 11
- 8722 **castaneae** Busck Maine, formerly with Chestnut, moths June and July, Engelhardt. Probably is still present.
- 8723 **proxima** Henry Edwards (**albicornis** Henry Edwards) 13 localities, June 23–10 August; Mt. Desert Is., 29 July, on *Spiraea* flowers 24
- 8727 **acerni** Clemens 38 localities, 9 June–10 August; Augusta, 30 June 2, found at lights 10:30 p.m. on sunporch 341
- 8729 **pyri** Harris (Pear Borer) Durham, N.H., no date 2; Southwest Harbor, 26 June, 2 4
- 8730 **rhododendri** Beutenmueller Goffstown, N.H., 24 April, emerged 1
- 8731 **scitula** Harris Durham, N.H., no date 2; Augusta, 25 June 2, 2 July, 25 July emerged, 1 August, 17 August; Monmouth, 25 June, 31 July; Mt. Blue, 31 July, 4 August, 8 August; Dryden, 30 July; Kokadjo, 31 July; Norridgewock, 6 August; Bar Harbor, 23 July 17
- 8740 **sigmoidea** Beutenmueller Augusta, 25 July 6, 9 August, 19 August 2, 21 August, 22 August, 26 August 15

**Genus PARHARMONIA Beutenmueller 1894 (ALBUNA Henry Edwards 1881)**

- 8763 **pini** Kellicott (Pitch Mass Borer) Harmony, 7 July, 8 July; Weeks Mills, 22 May; Orono, 30 June, bred; Passadumkeag, pupa 5
- 8764 **piceae** Dyar This species described from spruce does not seem to be recorded from the East. I have found in Indian Town, above Princeton, pitch masses on white spruce, much like those of *P. pini*. It is reported that Canadian workers in New Brunswick have reared a specimen from such which has been identified as *P. piceae* Dyar, now considered *Vespamima novaroensis* Hy. Edw.; Bitts Brook, Northumberland Co., N.S., 25 June 2

**Genus PODOSESIA Moeschler 1879**

- 8768 **syringae** Harris Chesterville, 30 July; Augusta, 13 August, no date, working in *Syringa vulgans*; S. China, 29 May 4

**Genus ALBUNA Henry Edwards 1881**

- 8789 **pyramidalis** Walker Sebago Lake, 19 August; Monmouth, 26 June; Hope, 24 June; Bar Harbor, 26 June; Southwest Harbor, 29 June; Millinocket, 17 July; Mt. Katahdin, 4400 ft., 8 July 7

**Genus PARANTHRENE Hübner 1819**

- 8792 **tricincta** Harris Liberty, 3 July; Mt. Desert Is., 8 July, bred from a gall on a poplar limb; Lincoln, no date (Clayton) 3
- 8798 **simulans** Grote Engelhardt quotes Charles W. Johnson as saying: "several specimens in the collection of the Boston Society of Natural History." It is rare from Maine. Lyman, no date. A number of larvae have been found in the Lyman-Alfred area in second growth which I identified as *P. simulans*.

**Family HELIODINIDAE****Genus EUCLEMENSIA Grote 1878**

- 8806 **bassettella** Clemens Wyman, emerged June 1; Portland, 4 July, 5 July 3, 8 July 3; Lyman, emerged May and June 6; Augusta, 10 July, 11 July; Allagash, 7 July 16

**Genus HELIODINES Stainton 1854**

- 8815 **bella** Chambers Augusta, 9 August; Vassalboro, 29 May; Allagash, 14 July; Kellyland, 8 July 4
- 8818 **tripunctella** Walsingham Hampton, N.H., 20 May, 19 June 2
- 8821 **albaciella** Busck Augusta, 9 June; Mt. Desert, 23 June 2

**Genus SCHRECKENSTEINIA Hübner 1825**

- 8825 **erythriella** Clemens Durham, N.H., 3 July; Augusta, 6 July; Lincoln, 20 July, 28 July; St. Francis, 14 July 5
- 8826 **felicella** Walsingham Hampton, N.H., 1 July; Kellyland, 12 July, 20 July 3
- 8827 **festaliella** Hübner 12 localities, 6 June-5 August 21

**Family PLUTELLIDAE****Genus TRACHOMA Wallengren 1880**

- 8842 **falciferella** Walsingham Jaffrey, N.H., 14 March, J.A. Frost; Vassalboro, 19 May; Farmington, 29 May; Camden, 9 November; Columbia Falls, 23 April; Lincoln, 26 May 4, 29 July; Tim Pond, 5 August; Kellyland, 13 July 12

**Genus HARPIPTERYX Hübner 1825**

- 8845 **dentiferella frustrella** Walsingham 24 localities, 10 July-27 August 71
- 8846 **xylostella** Linnaeus 10 localities, 12 July-18 August; Bar Harbor, 6 July 2 and 8 July 2, reared 22

**Genus ACROLEPIA Curtis 1838**

- 8866 **incertella** Chambers Hampton, N.H., 25 October, 18 November; a variety, 20 November 3
- 8866.1 **species near incertella** Augusta, 30 May; Dennistown, 29 July; Lincoln, 4 July, 5 July 2, 6 July, 9 July, 14 July, 20 July 2, 21 July, 23 July 3, 25 July 6, 27 July 2, 29 July 2, 31 July 2, 2 August, 5 August 2, 6 August, 7 August 5; Allagash, 4 August; Dennysville, 7 July 37

**Genus PLUTELLA Schrank 1802**

- 8870 **porrectella** Linnaeus Durham, N.H., 27 August; Augusta, 22 May, 7 June 5, 12 June, 17 June; Kingfield, 28 July; Bar Harbor, 21 September; E. Machias, 2 August 12
- 8875 **interrupta** Walsingham Tim Pond, 27 July; Greenville, 28 July, 4 August; T8R19, 5 August; Schefferville, Que., 7 July 5
- 8878 **maculipennis** Curtis 30 localities, 27 April-21 September 92

**Family YPONOMEUTIDAE (ARGYRESTHIIDAE in MONA)****Genus ARGYRESTHIA Hübner 1825**

- 8879 **quadristrigella** Zeller Lincoln, 24 July 1
- 8882 **alternatella** Kearfott Durham, N.H., 1 June, 5 June, 1 July, 7 August 4

8885	<b>freyella</b> Walsingham	24 localities, 30 May-30 July; common on Arbor Vitae	25
8885.1	<b>aureoargentella</b> Brower	27 localities, 6 July-4 August; common throughout the State on Arbor Vitae, Mariaville, holotype	230
8887	<b>annetella</b> Busck	Durham, N.H., 12 July; Woolwich, 13 June; distribution: Ontario, Quebec, Connecticut	3
8889	<b>calliphanes</b> Meyrick	14 localities, 10 July-7 August	25
8889.1	species near <b>calliphanes</b>	Georgetown, 24 July	1
8890	<b>goedartella</b> Linnaeus	Hampton, N.H., 1 July, 22 July; Center Harbor, N.H., no date; Lincoln, 10 July; T15R9, 14 July	5
8890.1	species near <b>goedartella</b>	Lincoln, 17 July, 25 July	2
8891	<b>pygmaella</b> Hübner	Oquossoc, 23 July; Lincoln, 5 July, 15 July, 17 July 2; T9R5, 9 July; Marion, 21 July	7
8892	<b>chalcochrysa</b> Meyrick	Chesuncook, 25 July; Lincoln, 5 July, 11 July; T11R8, 21 July 2; Marion, 15 July	6
8893	<b>oreasella</b> Clemens	29 localities, 27 June-13 September, on oaks	366
8894	<b>castaneella</b> Busck	Hampton, N.H., May, cotype	1
8897	<b>apicimaculella</b> Chambers	16 localities, 11 June-7 August	47
8897.1	species	T11R8, 15 July; Ashland, 31 July	2
8898	<b>subreticulata</b> Walsingham	Hampton, N.H., 4 June, 17 June; Chelsea, 5 July; Augusta, 17 July; Lincoln, 11 July; Depot Camp Mt., 1100 ft., 11 July; T11R8, 14 July, 18 July	8
8903	<b>conjugella</b> Zeller	26 localities, 8 June-21 September	86
8904	<b>belangerella</b> Chambers	Dennistown, 8 July, 14 July; Oquossoc, 14 July; Moose River, 7 July; Seboomook, 17 July; Lincoln, 13 July, 17 July, 10 August; Millinocket, 28 July; T15R9, 13 July; T16R13 (Chimenticook), 21 July	9
8905.1	species near <b>montella</b> Chambers	Topsfield, 27 July	1
8907	<b>rileyella</b> Busck	Kokadjo, 24 July; Augusta, 10 July, 2 August; Greenbush, 8 July; Mt. Katahdin, 19 June; T8R12, 28 July; T11R8, 6 June, 21 July; Topsfield, 16 July; Dennysville, 10 July	10
8912	<b>undulatella</b> Chambers	Augusta, 4 July; Sidney, 15 July; Isle Au Haut, 25 May; T15R9, 13 July; Ft. Kent, May, no date	6
8913	<b>austerella</b> Zeller	Greenville, 28 July; T5R6, 22 July; Smithfield, 23 June; Augusta, 8 June, 25 June, 10 July; Bar Harbor, 14 June 3 bred, 1 July; Lincoln, 5 July, 10 July, 11 July, 12 July, 3 August; Millinocket, 26 July; T11R8, 18 July; Dennysville, 23 July	18

- 8914 **thuiella** Packard 22 localities, 22 June–20 July, many reared; this is the most important economic species on *Arbor Vitae* 366
- 8915 **laricella** Kearfott 14 localities, 11 June emerged–17 September 36
- 8915.1 species near **laricella** Oquossoc, 6 July, 8 July, 12 July; Greenville, 29 June; Dennistown, 5 July, 2 August; Augusta, 3 June; Bar Harbor, 11 June bred, 14 June 3 bred, 17 June bred; Lincoln, 11 July; T8R17, 10 July; T15R12, 7 July 18
- 8917 **media** Braun Dennistown, 12 July, 23 July, 25 July; Kokadjo, 17 July; Greenville, 22 July; Kingfield, 13 July; Lincoln, 16 July, 27 July; T11R8, 21 July, 26 July; Allagash, 14 July; Marion, 6 July 12

### Genus ZELLERIA Stainton 1849

- 8923 **haimbachi** Busck New Brunswick, Que. and west on jack pine

### Genus SWAMMERDAMIA Hübner 1825

- 8924 **castaneae** Busck (**heroldella** Hübner) 16 localities, 28 May–25 August 37
- 8925 **cuprescens** Braun 10 localities, 1 July–9 August 85

### Genus OCNEROSTOMA Zeller 1849

- 8926 **piniariella** Zeller Hooksett, N.H., 22 June; Bar Harbor, reared, no date; Lincoln, 23 July 3
- 8926.1 **strobivorum** Freeman In Northeast on white pine

### Genus ATTEVA Walker 1854

- 8939 **aurea** Fitch (**punctella** Cramer) Durham, N.H.; Lee, N.H., Jefferson, N.H., no date; Vassalboro, 16 June; Isleford, reared (an island off Southwest Harbor), "pupa wrapped up in a sumac leaf," A.H. Napier 5

## Family SCYTHRIDAE

### Genus SCYTHRIS Hübner 1825

- 8950 **basilaris** Zeller Hampton, N.H., 3 June, 19 June; Hog Island, Bremen, 23 June; Seboomook, 3 August; Smithfield, 25 June, 12 July; Augusta, emerged 2 April 3, 23 June, 4 July 2, 6 July, 17 July, 5 September; Bar Harbor, 20 July 16
- 8951 **impositella** Zeller Hampton, N.H., 18 June 2, 25 June, 4 July, 6 July, 10 July; August, 18 June, 22 June, 12 July; Bar Harbor, 22 June, 25 June, 5 July 14
- 8953 **eboracensis** Zeller Hampton, N.H., 14 June 2, 17 June, 18 June, 23 June, 24 June; Boothbay Harbor, 27 July; Augusta, 22 June, 26 June, 1 July, 6 July, 27 July, 1 August, 3 August, 11 August, 29 August, 30 August, 5 September; Belgrade, 19 June; Bar Harbor, 2 July, 25 July, 3 August; Mt. Desert, 8 July; Passadumkeag, 18 June 24



8953.1	<b>epilobiella</b> McDunnough	Prince Edward Is., 2 August 2 bred ex <i>Epilobium</i> , 2-7 August 9 (McDunnough); Eel River, N.B., 26 July 5 on <i>Epilobium</i> (Freeman)	16
8963	<b>pilosella</b> Zeller	Passadumkeag, 25 June; Tremont, 4 September	2
8963.1	n. species?	Maria, Prov. of Que., 25 July 4	4
8965.1	<b>chenopodiella</b> Hübner	Montreal, Que., 12 June, 16 June, 6 August, 8 August (A.C. Sheppard), 2 September 4 (A.C. Sheppard), 10 September (V.R. Vickery); Canaan, 10 July	10
8967	<b>trivinctella</b> Zeller	Hampton, N.H., 29 June 2, 7 July; Augusta, 12 July, 3 August; Bar Harbor, 20 July	6
8967.1	species	Augusta, 29 June, 11 September	2
8967.2	<b>winnella</b> Busck	Montreal, Que., 15-18 June 22	22

### Family HELIOZELIDAE

#### Genus HELIOZELA Herrich-Schaeffer 1853

8976	<b>aesella</b> Chambers	Durham, N.H., 10 May 2, 15 May 3, 23 May; Litchfield, 31 August, bred ex grape; Southwest Harbor, 25 July, in bog	8
------	-------------------------	---	---

#### Genus ANTISPILA Hübner 1825

8978	<b>ampelopsiella</b> Chambers	Greenville, 23 July; Augusta, 2 June, 27 June, 4 July 3, 7 July 2, 22 July; Bar Harbor, 21 July, 2 August; Mt. Desert, 30 June, 10 July	13
8980	<b>cornifoliella</b> Clemens	Augusta, 4 July; Rangeley, emerged April 3	4
8984	<b>isabella</b> Clemens	Hampton, N.H., 30 May; Benton, 28 June; Augusta, 23 June, 29 June, 4 July; Mt. Desert, 23 May, 12 August; Lincoln, 12 July	8
8985	<b>nyssaefoliella</b> Clemens	Hampton, N.H., 3 July 5, 6 July 3; Augusta, 16 July; Greenbush, 6 July; Allagash, 17 July	11
8986	<b>viticordifoliella</b> Clemens	Hampton, N.H., 30 May, 1 July, 13 July 2; Augusta, May 4, 28 June 2, 8 July, 25 August; Bar Harbor, 21 July	13

#### Genus COPTODISCA Walsingham 1895

8994	<b>magnella</b> Braun	on <i>Gaylussacia</i>	1
8995	<b>negligens</b> Braun	Saco, 5 August 3	3
8996	<b>ostryaefoliella</b> Clemens	on <i>Ostrya</i>	1
8998	<b>splendoriferella</b> Clemens	Hampton, N.H., 26 July	1
9000	<b>kalmiella</b> Dietz	Saco, 5 August 2, 8 August; Sidney, 15 July; Augusta, emerged May, 19 June, 2 July, 3 July 7, 4 July 7, 5 July 6, 7 July, 22 July, 25 August, 29 August; Bar Harbor, 3 July, 6 July, 16 July, 2 August 2, 3	

August 9, 5 August 6, 18 August 2, 23 August; Southwest Harbor, 18 July 2, 21 July 9, 25 July 13, 8 August, 25 August 2

81

### Family DOUGLASHIIDAE

#### Genus TINAGMA Zeller 1839

9004 **obscurofasciella** Chambers Augusta, 10 June 2, 12 June 3

### Family ELACHISTIDAE

#### Genus ELACHISTA Treitschke 1833

- 9009 **orestella** Busck 37 localities, 22 May–26 October 205
- 9010 **brachyelytrifoliella** Clemens Is on grasses *Muhlenbergia* and *Brachyelytrum* which are present in Maine 0
- 9012 **illectella** Clemens Popham Beach, 5 August; Augusta, 10 July; Bar Harbor, 5 May, 28 May, 9 June, 5 July 2, 14 September; Eagle Lake, 5 June; Dennysville, 7 July. Braun says probably occurs throughout eastern United States & Canada 10
- 9014.1 **excelsicola** Braun Mt. Washington, N.H., 17 July 1
- 9015 **madarella** Clemens T11R8, 4 August; Allagash, 14 July 2
- 9016 **argentosa** Braun Augusta, 10 June 2, 13 June, 4 July, 2 August, 3 August; Etna, 19 June; Bar Harbor, 12 June 2, 4 July 2; Calais, 1 August 12
- 9017 **enitescens** Braun Greenville, 20 July; Abbot, 17 May; Kingfield, 10 July, 2 August; Camp Colby, 28 July 2; Augusta, 13 April, 17 July; Mt. Desert, 24 July; Millinocket, 28 July 10
- 9020 **parvipulvella** Chambers Eustis, 7 August; Augusta, 18 June, 20 June; Millinocket, 8 July; T18R12, 11 July; Dennysville, 24 July 6
- 9020.1 **hiberna** Braun Cascapedia, Que., 20 June, 21 June 2
- 9021 **praematurella** Clemens 16 localities, 19 May–26 August 36
- 9021.1 **albapalpella** Chambers Hampton, N.H., 30 April, 3 May, 6 May 2 4
- 9025.1 **maritimella** McDunnough Bathurst, N.B., 24 June, 26 June; Parrsboro, N.B., 29 June–8 July 3
- 9033 **radiantella** Braun Monmouth, 20 June 2
- 9036 **unifasciella** Chambers Quebec City, Que., no date 1
- 9037 **albicapitella** Engel Baddeck, N.S., no date. Widespread in Northeast 1
- 9039 **sylvestris** Braun Hampton, N.H., 25 June; Augusta, 20 June; Lincoln, 20 July 3
- 9040 **leucofrons** Braun Augusta, 12 August 1

9041	<b>irrorata</b> Braun	11 localities, 24 June–30 July	12
9041.1	<b>fuliginea</b> Braun	Ottawa, Ont. 10 July 2	2
9041.2	<b>oxytypa</b> Braun	Bradore Bay, Que., 3 August	3
9044	<b>cucullata</b> Braun	Phippsburg, 15 September, bred; Bar Harbor, 28 June, 30 July; T11R8, 7 July 2	4
9045	<b>patriodoxa</b> Meyrick	Hampton, N.H., 27 October; Chesuncook, 28 July; Augusta, 18 July 3, det. Braun; Alton, 28 June; Bangor, 24 June; Southwest Harbor, 25 June	8
9047	<b>tanyopsis</b> Meyrick	Chesuncook, 28 July; Augusta, 26 June, 18 July 4; Alton, 28 June; Bangor, 24 June; Southwest Harbor, 5 July	9
9048	<b>griseicornis</b> Meyrick	Blackburn, Ont., 22 June, 24 June; March, Ont., 2 June; Billings Bridge, Ottawa, Ont., 9–14 June, series, (McDunnough)	8
9048.1	<b>acenteta</b> Braun	Parrsboro, N.S., 29 June 7, on marshes; Ottawa House, N.S., 30 June 2, 5 July	9

## Family COLEOPHORIDAE

### Genus COLEOPHORA Hübner 1822

Manuscript for this list of Coleophoridae was submitted by Barry Wright of Halifax, Nova Scotia. He worked with Dr. McDunnough on this family and for years has given it his special attention. We are fortunate in being able to submit to him an assemblage of Maine specimens to determine and combine with his records toward the Maine list.

McDunnough serial numbers are followed by MONA numbers for all submitted by Wright. After the records by Wright, there follow in parentheses records by Carl Heinrich and others and by Brower keyed using Heinrich's key of additional material, especially southern Maine specimens, most of which lack larval cases. These determinations are more tentative.

#### MONA No.

9056	1256	<b>tiliaefoliella</b> Clemens	The long, slender, black pistol case is found in May and June. The dark brown and ochre moths are on the wing in June and July. Maine records: Bar Harbor from larva on beech? 1 July 1945. (10 localities, 5 July–2 August)	13
9057	1262	<b>rosaefoliella</b> Clemens	The curiously hooked, grey-brown case is to be found on opening rose leaves in May. Moths have been recorded from May to July. Distribution: Nova Scotia to British Columbia. (12 localities, 28 June–2 August)	58
9057.1	1263	<b>laurentella</b> McDunnough	The elongate, dark brown, annulate cases are often numerous on the underside of basal leaves of <i>Aster novi-belgii</i> at the edges of beaches in late June and early July and August. Distribution: Nova Scotia and New Brunswick.	

- 9058 1254 **malivorella** Riley The larva, a black pistol casebearer, feeds on apple, cherry, basswood, poplar and willow and is to be found in May and June. Moths fly in July and August. Maine records: Augusta, 12 July 1947 from larva on poplar. (Lee, N.H., 16 July; Augusta, bred; Orono, 3 August) 4
- 9059 1257 **atromarginata** Braun The black, pistol-shaped case is found on oak, hazel, ironwood and hickory in June; the moths in June and July. Distribution: Nova Scotia to South Carolina and west to Manitoba. (15 localities, 3 July-3 August) 47
- 9060 1258 **albovanescens** Heinrich Found principally on beech, the larva also feeds on birch, maple, ironwood in May. The moths fly in June and July. Maine records: Bar Harbor on beech, May 1945 adult 1 July 1945, on hazel 1947; Jackman 19 July 3; Oquossoc 13 July; T18R12, 13 July; Millinocket, 19 July. (Bar Harbor, 18 June, emerged 8 July) 10
- 9062 **querciella** Clemens Lee, N.H., 20 August; Dennistown, 6 July, 7 August; T2R6, Big Squaw, 13 July; Greenville, 7 July; Kingfield, 31 July; Bar Harbor, emerged 13 June; Ashland, 4 August; Topsfield, 10 July, 11 July; Marion, 10 July 2, 12 July 14
- 9064 1255 **sacramenta** Heinrich Also an apple feeder, this species has been recorded from plum, cherry, *Japonica* and basswood in eastern North America. The short, bulky, black pistol cases are found in May and June, the moths in June and July. Distribution: Nova Scotia to southern Ontario and Georgia.
- 9067 **atlantica** Heinrich (**malivorella** Riley MONA) Augusta, 28 June; Bar Harbor, bred 23 May; Mt. Desert Is., bred 19 July, all determined Heinrich 3
- 9073 1276 **gaylussaciella** Heinrich The slender, dark reddish brown cases are to be looked for in the fall on the undersides of huckleberry and sweet-fern leaves. Adults emerge in June and July. Distribution: Nova Scotia to Ontario and south to Virginia. (12 localities, 30 June-12 August) 44
- 9073.1 1287 **persimplexella** McDunnough The curiously shaped, orange-brown pagoda-like case is to be found in early spring as the larva hibernates in the forks of twigs of sweet-fern, birch and alder. The moths emerge in May and June. Distribution: Nova Scotia to New York and New Jersey.
- 9074 1283 **cretaticastella** Clemens The larvae mine into the under-surface of blackberry leaves in late summer and then into opening leaf buds briefly in May when the holster cases are most easily collected and reared. Maine records: Augusta, 21 June 1941, 12, 14 July 1947. (7 other localities in Maine, 5 July-5 August) 14

- 9074.1 1285 **ruprestrella** McDunnough The holster-cases of this species can be found in May on the underside of leaves of wild and cultivated strawberry plants where the whitish blotches on freshly mined leaves are quite conspicuous. The moths emerge in June and July. Distribution: Nova Scotia to North Carolina and west to Washington and Oregon.
- 9074.2 1286 **ledi** Stainton This species mines the leaves of Labrador-tea and leatherleaf, constructing a pagoda-like case from rings of leaf epidermis. The hairy orange case is to be found in April and May. The moths emerge from May to July. Distribution: Newfoundland to Ontario and Michigan
- 9075 1290 **kearfottella** Barnes & Busck This willow feeder constructs an untidy case of pieces of leaf and is to be found in May and June. The moth flies in July and August. Maine records: Bar Harbor, 23 July 1936, 10, 11 July 1937, 3 August 1937; Kellyland, 20 July; Millinocket, 20 July; T18R12, 9 July; Lincoln, 10, 24 July, 2, 4 August. (Lincoln, 5 July, 14 July) 13
- 9077 **leucochrySELLa** Clemens Bar Harbor, emerged 11 June; Lincoln, 23 July; Ashland, 12 July, 13 July, 16 July 2, 28 July; Marion, 5 July, 3 August 9
- 9078 1278 **viburniella** Clemens This species also matures in the fall when its characteristically crested cases can be found on *Viburnum*. Adults fly from May to July, Distribution: Nova Scotia to Ohio and Kentucky. (Lincoln, 5 July, 6 July, 21 July) 3
- 9078.1 1280 **multicristatella** McDunnough The characteristically crested reddish brown holster cases are found on *Rhododendron* and huckleberry in September and October. The moths emerge in May and June. Distribution: Nova Scotia.
- 9079 **argentialbella** Chambers 14 localities, 30 June–30 August 32
- 9080 1316 **rosacella** Clemens The larval case with a tricarinate apex is to be found on developing rose leaves in spring. The moth flies in June and July. Maine records: Augusta from larvae on rose 29 June 1941. (Lincoln, 3 August; Ashland, 21 July) 3
- The following two species are seed feeders on *Aster* and *Solidago*. The larvae construct silken cases with tricarinate apices. These cases are adorned with pappus from the seeds on which they feed. The larvae feed up in the fall, hibernates on the ground over winter, pupate in the spring and the adults emerge at the flowering times of their hosts. B.W.
- 9080.1 1334 **triplicis** McDunnough On *Solidago sempervirens*, adults in August. Distribution: Nova Scotia and New Brunswick.
- 9080.2 1335 **puberuloides** McDunnough On *Solidago puberula*, adults in August. Distribution: Nova Scotia.

- 9085      **caryaefoliella** Clemens    Hampton, N.H., 12 July, bred from hickory, det. Busck      1
- 9086      **ostryae** Clemens (syn. **carpinella** Heinrich)    Marion, 18 July; Long A, 9 July; St. Francis, 23 July      3
- 9088    1300 & **limosipennella** Duponchel    The reddish brown larval cases with flared bilaterally compressed apex are to be found on elm and black walnut in the spring. Moths fly in July and August. Distribution: Illinois through Ontario to Massachusetts and south to Washington, D.C. (Hampton, N.H., 15 May, 7 June, 21 June; Belfast, 16 July; Hartland, 15 July; Beddington, 13 July; Bar Harbor, 6 July; Mt. Desert Is., 11 June; Aurora, reared July; Castle Hill near Ashland, 7 June)      10
- 9088.1 1304    **paludoides** McDunnough    The unusual larval case consists of a reddish brown portion of leaf with the larva occupying a tube along one edge. The cases are to be found in the fall and the moths emerge in June and July. Distribution: Michigan to Nova Scotia and south to New Jersey.
- 9089    1300    **comptoniella** McDunnough    The reddish brown larval cases may be found on birch, alder, sweet-fern, sweet gale, bayberry and, occasionally, Labrador-tea in the fall and spring. They are most easily found in May and June when fresh feeding blotches are most conspicuous. Moths fly in June and July. Maine records: Bar Harbor on white birch emerged in June, larva on sweet-fern emerged in 1948.      2
- 9091.1 1298    **alnifoliae** Barasch    This European species feeds on alder in the fall and spring in a case resembling that of *lentella*, though longer. The moth is on the wing in June and July. Distribution: Nova Scotia to Michigan.
- 9092      **coruscipennella** Clemens    Oquossoc, 2 August; Eustis, 16 July; Dennistown, 16 July; Greenville, 13 July; Kingfield, 30 July; Farmington, 22 June; Bar Harbor, 10 July; Lincoln, 9 July, 10 July; Long A, 30 July      10
- 9092      **coruscipennella** Clemens    Oquossoc, 2 August; Eustis, 16 July; Dennistown, 16 July; Greenville, 13 July; Kingfield, 30 July; Farmington, 22 June; Bar Harbor, 10 July; Lincoln, 9 July, 10 July; Long A, 30 July      10
- 9094      **aeneusella** Chambers    10 localities, 8 June-19 July      13
- 9095      **apicalbella** Braun    Caucomgomoc, 30 June; Long A, 7 July; Ashland, 30 June, 19 July; T11R12, 25 July; St. Francis, 12 July, 23 July; Marion, 12 July      8
- 9097      **salmani** Heinrich    22 localities, 25 June-8 August. In MONA 1308 as a synonym of *serratella* Linnaeus. Widespread and an important pest on both white and grey birch.      52

- 9098 1311 **laricella** Hübner The Larch Casebearer is well known to foresters. Early instar larvae in their tiny cases overwinter at the bases of leaf buds on larch. In spring, they mine into developing needles and enlarge their cases with silk. Adults emerge in June and July. Maine records: Portland, 4-11 June 1906; Vanceboro, 22 June 1948; Amherst, 18 June; Bar Harbor, 26 June 1933, 23 June 1934, 8 July 1936; Mount Desert Is., 24 June 1934; Stratton, 10 July 1936; Orono, 4 June 1905; Blue Hill, 25 July 1912. Most records are from larvae reared in larch. (10 additional localities, 26 June-25 August. General, at times, important defoliator of larch)
- 9099 1307 **cerasivorella** Packard This is the Apple Cigar Casebearer, previously known as *serratella*, which also feeds on hawthorne, pear, cherry, plum, mountain ash, *Japonica* and *Cotoneaster*. When numerous, the larvae may cause severe damage to apple blossoms and young fruit in orchards. Maine records: Augusta on hawthorne emerged 3-12 July 1946, on apple June to July; Ellsworth on apple 3-15 July 1950; Bar Harbor, 2 July 1935. (Tim Pond, 3 July; Madison, 27 August; Mt. Desert Is., 16 July 2 bred on apple, 21 July; Lincoln, 23 July, 30 July; Ashland, 2 August)
- 9099.1 1308 **serratella** (Linnaeus) This is the Birch Casebearer which was described as *Coleophora salmani* by Heinrich in 1929 after it had been discovered doing considerable damage to birches on Mount Desert Island in 1927. It was later found to be a European species, then known as *fusedinella* (Zeller), and has been the subject of considerable economic literature. Recently in Europe, *fusedinella* was synonymized with *serratella* a name which had been wrongly applied to the apple casebearer. Maine records: Mt. Desert Is., type series 18 July 1928, 15 July 1931, 4-19 July 1932; Bar Harbor, July 1927, from larvae on white birch 21-29 July 1936, 3 August 1936, 8-18 July 1937; Cutler, from larvae on birch 12 July 1937, 4-18 July 1947; Christmas Cove, from larvae on white birch 1 July 1932; Augusta, from larva on grey birch 8 July 1947.
- 9102 1271 **pruniella** Clemens The holster-case larva mines the leaves of a variety of plants including cherry, apple, mountain ash, hawthorne, serviceberry, birch, alder, sweet-fern, bayberry, willow, aspen, poplar and hickory. Mature cases may be found in late summer and also in spring. The moths emerge in June, July and early August. Maine records: T15R9, De Boulie Mt., 11 July, 15 July; T11R8, Rocky Mt., 17 July; Lincoln, 7, 10, 11 July; Ashland, 15, 16 July 1947; Bar Harbor, 6 July 1936, 3 August 1937, 14 July 1938; Southwest Harbor, 3 August 1943; Augusta, 20 June 1946 on poplar, 6 July 1940, 12 July 1947 on poplar; Salem, 30 June on birch; Oquossoc, 14 July; Greenville, on poplar, no date.

30

8

11

18

- 9103      **cinerella** Chambers    Hampton, N.H. 29 June; Caratunk, 17 July; Salisbury Cove, 16 August; Ashland, 31 July      4
- The following two species feed on the seeds of *Juncus*. They construct cases of silk, often adorned with pieces of seeds, inflorescences or frass, each one characteristic for the species. Larval cases may be found late in the fall on the foodplant, which they leave to overwinter on the ground or attached to adjacent woody plants or tree trunks. The adults emerge in the summer, coinciding with the flowering of their hosts.    B.W.
- 9104    1384    **concolorella** Clemens    The larval cases have been found in May attached to tree trunks, *Rhododendron*, *Gaylussacia* and *Juncus effusus compactus*, the last being the most probable food plant. Moths fly in June and July. Distribution: Nova Scotia to Ohio and Kentucky. (Mt. Albert, Que., 18 June; Dennistown, 30 July; Kokadjo, 12 July; Camp Colby, 14 August; Lincoln, 9 July; Topsfield, 15 July; Dennysville, 6 August; Marion, 10 July)      8
- 9104.1    1385    **maritella** McDunnough    The tiny brown silk cases are found on *Juncus gerardi* and *Juncus littoralis* in salt marshes in September. The moths emerge in June and July. Distribution: Nova Scotia to Michigan.
- 9104.2    1387    **spissicornis** Haworth    The larva of this species has been reported as a pest of clover in New Zealand and California. The species is widely distributed in North America with records from almost every state and province. The moths fly in May to July. Maine records: Orono, 20 June 1882; Mt. Desert Is., 10 July; Augusta, 27 June 1931, 3, 11 July 1934, 12 July 1940, 13 July 1947, 2, 18, 28 July 1948; Ashland, 16 July 1945; Eustis, 7 July; Millinocket, 8 July; Greenville, 13 July; Allagash, 22, 23 July; Oquossoc, 10, 21, 23 July 1945. (Hampton, N.H., 16 June, 22 June det. Kearfott, 23 June 2, 26 June det. Kearfott, 1 July, 8 July; Pincourt, Ile Perrot, Que., 19 June, V.R. Vickery.)      27
- 9104.3    1388    **trifolii** (Curtis)    This is an introduced insect on an introduced plant. The bulky brownish silk cases are found on the seeds of *Melilotus alba* (white sweet clover) in August and September. The adults emerge in June, corresponding with the flowering of their host. Distribution: Ontario to Nova Scotia, following the spread of the host plant. (As *frischella* Linnaeus by A.C. Shepard and V.R. Vickery, Que., Ile Perrot, June 19-30; T18R19, 8 July; Marion, 12 July)      3
- 9108    1273    **kalmiella** McDunnough.    The larvae mine the leaves of sheep laurel. They mature late in the fall, hibernate and pupate in the spring, emerging as adults in May to July. Distribution: Newfoundland to Ontario.



- 9108.1 1274 **canadensisella** McDunnough The large, slightly crested holter cases are usually easy to find on the underside of leaves of *Cornus canadensis* in late fall. The larvae pupate in spring and moths emerge in May. Distribution: Nova Scotia to New Jersey and west to Michigan.
- 9108.2 1275 **salicivorella** McDunnough The larva in its slender reddish brown case feeds on willow in late summer, hibernates over winter and pupates in the spring. The moths emerge in June and July. Maine records: Sidney Bog, October 1947 on broad-leaved willow. 1
- 9111 **vernoniaella** Chambers Chesuncook, 17 July; Lincoln, 14 July, 26 July; Marion, 10 July, 11 July 5

The following nine species feed on the seeds of *Juncus*. They construct cases of silk, often adorned with pieces of seeds, inflorescences or frass, each one characteristic for the species. Larval cases may be found late in the fall on the foodplant, which they leave to overwinter on the ground or attached to adjacent woody plants or tree trunks. The adults emerge in the summer, coinciding with the flowering of their hosts. B.W.

- 9120 1365 **cratipennella** Clemens This is the largest of the *Juncus* seed feeders and the larval case is entirely of silk without adornment. The larva feeds on various species of *Juncus*, most often *J. effusus compactus*. The moths emerge in June and July. Distribution: Newfoundland to Ontario and south to Mississippi and New Jersey. (11 localities, 6 July-8 August) 21
- 9120.1 1374 **sexdentatella** McDunnough The larval case on *Juncus canadensis* is practically obscured by the seed bracts incorporated in its construction. The moths fly in July. Distribution: Nova Scotia and Newfoundland.
- 9120.2 1376 **latronella** McDunnough The larval case on *Juncus effusus compactus* is ornamented with tiny particles of seed. The moths fly in June and July. Distribution: Nova Scotia to Ontario.
- 9120.3 1377 **glissandella** McDunnough The larva feeds on various species of *Juncus* in a slim case ornamented with frass above the mouth. The moths fly from May to July. Distribution: Newfoundland to Alberta, south to Michigan.
- 9120.4 1378 **glaucolella** Wood The larvae are found on several species of *Juncus* and construct a slender case which is slightly roughened above the mouth. The moths fly in June and July. Distribution: Nova Scotia to British Columbia.
- 9120.5 1379 **alticolella** Zeller This European species has only been recorded in North America from Mt. Washington, New Hampshire. However, it is anticipated that it must also occur in adjacent areas and states. The larval case is somewhat roughened but is

entirely of silk. Moths emerged in June from larvae collected on a small *Juncus* in Alpine Garden.

- 9120.6 1380 **fagicorticella** Chambers The larval case consisting largely of a mined seed capsule and accompanying bracts is found on *Juncus tenuis* and *J. effusus compactus* in the fall. Adults fly from May to July. Distribution: Nova Scotia to Ontario, south to Washington, D.C.
- 9120.7 1381 **bispinatella** McDunnough The slender, tapered case is found on *Juncus canadensis* in the fall, the moths from May to July. Distribution: Nova Scotia.
- 9121 1358 **quadri-lineella** Chambers The tiny case of this species incorporates part of the seed covering and is found on *Juncus effusus* in July and again in the fall. There are two generations with the adults emerging in May and August.

The following seven species are seed feeders on *Aster* and *Solidago*. The larvae construct silken cases with tricarinate apices. These cases are adorned with pappus from the seeds on which they feed. The larvae feed up in the fall, hibernate on the ground over winter, pupate in the spring and the adults emerge at the flowering times of their host. B.W.

- 9124 1337 **duplicis** Braun On various species of *Aster* and *Solidago*, adults in August and September. Distribution: Nova Scotia to Ontario, south to Ohio and New York.
- 9124.1 1338 **rugosae** McDunnough On *Solidago rugosa*, adults August and September. Distribution: Nova Scotia and New York.
- 9124.2 1339 **acuminatoides** McDunnough On *Aster acuminatus*, adults in August. Distribution: Nova Scotia.
- 9124.3 1340 **bidens** Braun On *Aster umbellatus*, adults June to September. Distribution: Nova Scotia to British Columbia, south to Ohio.
- 9124.4 1341 **nemorella** McDunnough On *Aster nemoralis*, adults in August. Distribution: Nova Scotia.
- 9124.5 1342 **intermediella** McDunnough On *Solidago graminifolia*, adults in August. Distribution: Nova Scotia and New Brunswick.
- 9124.6 1343 **drextrella** Braun On various species of *Aster* and *Solidago*, adults in August. Distribution: Nova Scotia to Ontario, south to Ohio and Indiana.
- 9124.7 1347 **littorella** McDunnough Larval cases on *Salicornis* in October, moths in July and August. Distribution: Nova Scotia, New Brunswick and Prince Edward Island.
- 9124.8 1348 **salinoidella** McDunnough Larval cases on *Atriplex* and *Chenopodium* in September and October, adults in July and August. Distribution: Nova Scotia and New Brunswick.

- 9125 **ericoides** Braun Mt. Vernon, 1 July; Lincoln, 13 July; Millinocket, 15 July; T9R5, 14 July; Ashland, 16 July; Topsfield, 14 July, 20 July 7
- 9126 **polemoniella** Braun Augusta, 3 September; Ashland, 14 July, 20 July 3
- 9127 **astericola** Heinrich Lincoln, 8 July; Ashland, 14 July, 4 August 3
- 9133 **caespitiella** Zeller Hampton, N.H. 15 May, 30 May, 17 July, det. Dietz; Dennistown, 25 July 3
- 9150 **shaleriella** Chambers in MONA a syn. of **cratipennella** Clemens McD. no. 9120 Kokadjo, 24 July; Lincoln, 13 July, 17 July; Topsfield, 20 July 4
- 9151 **fagicosticella** Chambers should be **fagicorticella** Chambers Topsfield, 3 July; reported New Brunswick. See 9120.6 1
- 9153 1349 **lineapulvella** Chambers Larvae of this species feed in seeds of *Amaranthis* and *Rumex* in the fall and overwinter on the ground. In May the larvae move around to find a suitable place for attachment for pupation and the moths emerge in August. In Michigan this species has been a problem in *Asparagus* fields in May when pupating larvae attached themselves to crops. Maine record: Orono, 28 July 1915. 1
- 9153.1 1350 **quadruplex** McDunnough The granular brownish case with its tricarinate apex is found on seed heads of *Achillea millefolium* in the fall. The moths emerge in July and August. Distribution: Nova Scotia, New Brunswick and Ontario.

## Family GRACILLARIIDAE

### Genus LITHOCOLLETIS Hübner 1825

#### (PHYLLONORYCTER Hübner 1822)

- 9164 **fitchella** Clemens Durham, N.H., 24 September 2 reared ex black locust; Hampton, N.H., 7 May, 30 May, 8 June; Augusta, emerged May 5; China, bred ex *Quercus macrocarpa*; Topsfield, 3 July; Albion, emerged April 13
- 9166 **bataviella** Braun Hampton, N.H., 29 May; Lincoln, 12 July; Long A, 15 July; Millinocket, 5 August 2
- 9166.1 species Lincoln, 5 August 1
- 9167 **trinotella** Braun Chesuncook, 7 August; T9R5, 14 July 2
- 9169 **clemensella** Chambers Augusta, emerged, 25 July; T18R12, 30 July 2
- 9171 **argentifimbriella** Clemens Hampton, N.H., 10 July, 13 July; Augusta, emerged, 5 September; Lincoln, 4 July 4

- 9172 **lucidicostella** Clemens Readfield, 19 July; Augusta, emerged May 5; Long A, 30 July; Millinocket, 19 July; Ashland, 21 July; T11R8, 20 July; Allagash, 20 July; Topsyfield, 11 April; Aurora, emerged March 6, emerged April 4 18
- 9173 **albanotella** Chambers Albion, emerged April, emerged 5 May 5; Millinocket, 15 July 7
- 9177 **obscuricostella** Clemens Lee, N.H., 11 June 1
- 9178 **ostryaefoliella** Clemens Augusta, 17 July, 4 August; Bar Harbor, 13 May, 12 July, 25 July, 5 August, 8 August; Southwest Harbor, 16 August; Lincoln, 17 July 3, 23 July 2, 6 August; T11R8, 8 July, 20 July; Stockholm, 19 June; Twn. 20 E.D., emerged 23 April; Fort Kent, emerged May 9 27
- 9180 **rileyella** Chambers Bar Harbor, 26 May; Lincoln, 15 July, 17 July, 21 July 4
- 9181 **kearfottella** Braun Dennistown, 20 July; Augusta, 28 May; Bar Harbor, 27 May; Lincoln, 11 July, 14 July, 17 July, 20 July, 23 July, 24 July, 25 July, 26 July, 27 July, 29 July 5, 2 August; Millinocket, 4 July, 1 July, 20 July, 23 July, 26 July, 2 August, 12 August; T9R5, 9 July, 2 August; Topsyfield, 9 July, 30 July, 7 August; Dennysville, 9 July, 16 July 34
- 9183 **olivaeformis** Braun Georgetown, 29 July 1
- 9185 **martiella** Braun Devil's Den (Porter), 16 May; Augusta, 1 April, 16 May, 6 June, 16 June; Bar Harbor, 12 May, 3 June, 18 July, 1 August; Mt. Desert, 30 July, 6 August; Lincoln, 12 July 2, 16 July, 24 July, 25 July, 26 July, 27 July 2, 29 July, 4 August; Millinocket, 28 July; T5R16, 27 July; T11R10, 28 June, 30 June; Dennysville, 29 July 26
- 9187 **gemmea** Frey & Boll Bar Harbor, 20 July, 25 July, 25 July, 8 August; Lincoln, 30 May, 18 July, 6 August; Topsyfield, 27 July; Marion, 8 August 9
- 9188? **diversella** Braun Augusta, emerged 16 May; Bar Harbor, bred ex *Gaylussacia baccata*, emerged April & May 6, 23 July 8
- 9191 **robiniella** Clemens Hampton, N.H., 16 November, in a house 2; Augusta, bred emerged 6 May, 19 October; Benton, 14 September 2; Mt. Desert, 22 July; T11R8, 9 July 9
- 9192 **auronitens** Frey & Boll Lincoln, 9 July; T11R8, 30 July; Eustis, 14 July; Allagash, 18 July; Princeton, 22 July; Dennysville, 31 July; no locality, bred ex *Ulmus* 7
- 9195 **scudderella** Frey & Boll 13 localities, 14 April-7 August; bred ex willow Bar Harbor, emerged April & October, bred ex *Salix bebbiana* 60
- 9197 **salicivorella** Braun Lincoln, 26 July 1
- 9198 **deceptusella** Chambers Dennysville, 24 July 1
- 9200 **alnicolella** Walsingham 13 localities, 20 April-9 August 26

9201	<b>alni</b> Walsingham	Hampton, N.H., 28 May	1
9202	<b>malimalifoliella</b> Braun	13 localities, 7 July-24 August	23
9203	<b>crataegella</b> Clemens	10 localities, 11 April-22 August	20
9203.1	<b>restrictella</b> Braun	Bar Harbor, blotch miner <i>Fagus</i> , emerged April; Mt. Desert Is., 19 July 2, bred ex <i>Fagus</i>	3
9204	<b>propinquinella</b> Braun	15 localities, 28 April-6 August; Ft. Kent on Balsam Poplar, May 3	52
9204.1	<b>blancardella</b> Fabricius	Generally distributed in northeastern America on apple and other rosaceous hosts, 3 broods	
9205	<b>incanella</b> Walsingham	Fayette, 2 June, 3 June, 5 June, emerged ex oak; Bar Harbor, emerged April ex <i>Alnus</i> 4; Mt. Desert, emerged June 5; W. Enfield, 16 June	13
9206	<b>populiella</b> Chambers	Bar Harbor, 18 July; Hampton, N.H., 9 November	23
9209	<b>aeriferella</b> Clemens	Hampton, N.H., 21 July; Lincoln, 14 July, 17 July, 24 July, 26 July	5
9214	<b>basistrigella</b> Clemens	Augusta, emerged June; Albion, emerged May; Auburn, 25 July 2; Bar Harbor, emerged May 3; Mt. Desert, 27 July	8
9216	<b>lucetiella</b> Clemens	Durham, N.H., 3 October; Monmouth, emerged 18 March 3; Lincoln, 16 July, 17 July; Marion, 31 July	7
9217	<b>symphoricarpella</b> Frey & Boll	Augusta, 4 July, 6 July; Lincoln, 6 July; T9R5, 7 July	4
9218	<b>ostensackenella</b> Fitch	Hampton, N.H., 14 June; Augusta, 24 May 2, 27 May, 14 July; Sedgwick, emerged June 2, emerged July; Bar Harbor, 30 May, 31 May 4, 1 June 2, 24 June, 30 June	16
9219	<b>tritaenianella</b> Chambers	Durham, N.H., 28 May	1
9222	<b>tiliacella</b> Chambers	Lee, N.H., 26 July; Lincoln, 12 July, 24 July; T11R8, 15 July; Topsfield, 28 July; Kellyland, 17 July; Marion, 9 July	7
9224	<b>fragilella</b> Frey & Boll	Durham, N.H., 16 July; Bar Harbor, emerged 14 April 2; Augusta, 26 June	4
9225	<b>salicifoliella</b> Chambers	Waltham, August, no date; Greenville, 20 July, 31 July; Bar Harbor, 11 August bred, 14 September; Lincoln, 26 July, 27 July; Millinocket, 29 July; T9R5, 21 July	9
9226	<b>tremuloidiella</b> Braun	Dennistown, 5 August, 7 August; Augusta, 22 April, on window; Bar Harbor, 28 July, 11 August, 18 August; Mt. Desert, 20 August; Lincoln, 10 September, 12 September 2, 13 September 3, all bred; Waltham, 4 August, no date August	15
9228	<b>lysimachiaeella</b> Chambers	Bar Harbor, emerged April, ex <i>Fagus</i> 2, emerged ex European Beech	3

9231	<b>gaultheriella</b> Walsingham	Mt. Desert, emerged May ex <i>Myrica</i>	1
9232	<b>nemoris</b> Walsingham	Hampton, N.H., 15 July 2; Nova Scotia, Canada, many July & August	2
9234	<b>lentella</b> Braun	Lincoln, 10 July, 11 July, 12 July, 17 July, 27 July; T11R8, 23 July; T5R16, 29 July	7
9235	<b>saccharella</b> Braun	Oquossoc, 23 June; Dennysville, 8 July	2
9236	<b>macrocarpella</b> Frey & Boll	China, emerged April 4 ex <i>Quercus macrocarpus</i> ; Benton, 12 July, emerged ex <i>Q. macrocarpus</i> ; Albion emerged May ex <i>Q. macrocarpus</i> 3; W. Enfield, 16 June; Lincoln, 24 July; Long A, 10 June; T8R19, 10 August	12
9240	<b>hamadryadella</b> Clemens	Hampton, N.H., 2 June; Durham, N.H., emerged 26 January; Augusta, emerged 25 May 5, emerged June; Bar Harbor, emerged 19 June 2	10
9245	<b>ulmella</b> Chambers	Etna, 19 June 2	2
9246	<b>quercivorella</b> Chambers	Bar Harbor, 18 July	1
9252	<b>fletcherella</b> Braun	Augusta, emerged April, 7 July; Bar Harbor, emerged April, 20 April, June, bred 16 June, 18 June; Mt. Desert, emerged 16 April 2, 18 June 3, 29 June	14
9253	<b>arcuella</b> Braun	Sebago Lake (Naples), 30 July; Oquossoc, 20 July, 22 July; Bar Harbor, 4 June, 14 June; Mt. Desert, bred June 4, 21 June bred; Lincoln, 10 July, 17 July; Houlton, 31 July; Dennysville, 24 April; no locality, bred ex <i>Quercus</i> 2	16
9254	<b>betulivora</b> Walsingham	Dennistown, 8 July; Mt. Desert, bred 2 June; Lincoln, 10 July; Millinocket, 13 July, 17 July; Ashland, 12 July	6
9256	<b>bethunella</b> Chambers	Augusta, 18 July, 7 August; Bar Harbor, bred 19 April, no date, 10 June, 23 June 2; Mt. Desert, 3 June; T5R16, 28 July	9
9257	<b>picturatella</b> Braun	Hampton, N.H., 21 July; Boothbay Harbor, 11 June; Bar Harbor, 29 June, 24 July, 29 July; Seal Harbor, 16 August, miner in <i>Myrica pensylvanica</i>	6
9259	<b>castaneaeella</b> Chambers	Oquossoc, 14 July; Lincoln, 18 July, 2 August; Princeton, 17 July	4
9260	<b>guttifinitella</b> Clemens	13 localities, 20 April-2 August species near <b>guttifinitella</b> Dennistown, 9 July; Lincoln, 15 July	79 2
9261	<b>obstrictella</b> Clemens	Hampton, N.H., 21 July; Oquossoc, 12 July	2
9262	<b>corylisella</b> Chambers	Fryeburg, 9 August, 19 August, 20 August; Madison, 25 August; Augusta, July, no date; Razorville (nr. Washington), 29 August; Bar Harbor, 21 June; Southwest Harbor, 24 July	8
9264	<b>ostryarella</b> Chambers	Parkman, bred 12 April, 13 April, 20 April 2	4

9265	<b>aceriella</b> Clemens	Bar Harbor, 19 June 2, 21 June bred, 22–30 June 17; Mt. Desert, bred 19 June, 20 June; Aurora, emerged April 5, emerged 29 April, emerged 1 May 3, emerged 3 May 4, September 4; Lincoln, 12 July, 25 July; Topsfield, emerged 26 April; Marion, 14 July	36
9266	<b>hamameliella</b> Busck	Bar Harbor, 19 June 3, 21 June 8, 23 June, 24 June, bred ex <i>Hamamelis</i> ; T11R10, 28 June	14
9267	<b>tubiferella</b> Clemens	T5R16, 28 July	1
9267.1	species	Hampton, N.H., 11 May; Marion, 15 July	2

### Genus PORPHYROSELA Braun 1908

9268	<b>desmodiella</b> Clemens	Augusta, emerged March to May 20	7
------	----------------------------	----------------------------------	---

### Genus CREMASTOBOMBYCIA Braun 1908

9271	<b>solidaginis</b> Frey & Boll	Augusta, bred, no date	1
9272	<b>ambrosiella</b> Chambers	Ellsworth, 4 August	1
9273	<b>ignota</b> Frey & Boll	Lincoln, 21 July; Augusta, 28 December, in a house	2

### Genus MARMARA Clemens 1863

9275	<b>salictella</b> Clemens	15 localities, 7 July–3 August; this species mines the twigs of <i>Salix</i>	21
9276	<b>serotinella</b> Busck	15 localities, 4 July–2 October	43
9279	<b>elotella</b> Busck	Sebago Lake (Naples), 30 July; Lincoln, 14 July, 17 July, 18 July, 19 July, 27 July, 30 July; Millinocket, 17 July	8
9283	<b>fasciella</b> Chambers	Oquossoc, 22 July; Dennistown, 22 July; Greenville, 20 July; Lincoln, 9 July, 14 July 2, 24 July, 25 July, 26 July, 27 July, 2 August; Millinocket, 26 July, 21 July; T11R8, 4 August 2	15
9284	<b>pomonella</b> Busck	Augusta, 19 August; T6R7, 21 July; Dennysville, 10 July, 12 July	4
9285	<b>auratella</b> Braun	Dennistown, 28 July, 31 July 2; Eustis, 25 July; Kingfield, 10 July; Augusta, emerged 4 June; Lincoln, 13 July	7
9287	<b>apocynella</b> Braun	Dennistown, 17 August; Lincoln, 10 July	2

### Genus LEUCANTHIZA Clemens 1859

9290	<b>dircella</b> Braun	Harrison, bred 5—15 April 8, miner on <i>Dirca</i> , August, no date 2; Augusta, 5 September	11
------	-----------------------	--	----

### Genus LEUCOSPILAPTERYX Spuler 1910

9294	<b>venustella</b> Clemens	Hampton, N.H., 18 May, 7 June, 11 June, 11 July, 15 August; Bar Harbor, 17 July; Lincoln, 18 July, 2 August; Dennysville, 3 August	9
------	---------------------------	--	---

**Genus ACROCERCOPS Wallengren 1881**

9297	<b>albinatella</b> Chambers	Augusta, 30 May 2, 4 June 2 on raspberry; Kingfield, 12 July; Lincoln, 12 July; T7R17, 7 July	6
9300	<b>astericola</b> Frey & Boll	27 localities, 23 May–4 September	127
9301	<b>strigosus</b> Braun	Bar Harbor, 3 September	1

**Genus NEUROBATHRA Ely 1917**

9306	<b>strigifinitella</b> Clemens	10 localities, 1 July–18 August	31
------	--------------------------------	---------------------------------	----

**Genus PHYLLOCNISTIS Zeller 1848**

9307	<b>ampelopsiella</b> Chambers	Augusta, 14 May	1
9307.1	sp. on <i>Tilia</i> ,	March 2	2
9308	<b>populiella</b> Chambers	14 localities, 22 April–18 September, many bred	51
9310	<b>vitigenella</b> Clemens	Augusta, March	1
9315	<b>insignis?</b> Frey & Boll	Long A, 7 July; T11R8, 30 July	2

**Genus PARECTOPA Clemens 1860**

9318	<b>lespedezaefoliella</b> Clemens	10 localities, 2 June–8 August, Augusta, emerged 1 November	16
9319	<b>robiniella</b> Clemens	14 localities, 24 May–21 August	36
9320	<b>pennsylvaniella</b> Engel	22 localities, 20 June–3 August	94
	'' variety?	Augusta, no date; Kellyland, 18 July; E. Machias, 10 July	3
9321	<b>plantaginisella</b> Chambers	Stratton, 13 July; Lincoln, 2 July; Long A, 12 July; Dennysville, 24 July	4
9325	<b>albicostella</b> Braun	21 localities, 6 July–9 August	198

**Genus CALLISTO Stephens 1834 (PARORNIX Spuler 1910)**

9330	<b>guttea</b> Haworth	Hampton, N.H., 17 May, 3 June, 7 June, 8 June, 14 June, 18 June, 21 June, 1 July; Augusta, 1 August, emerged August; Bar Harbor, 20 August; Mt. Desert, 21 June, det. Forbes; Lincoln, 10 July, 29 July; Allagash, 14 July; Marion, 9 July	17
9331	<b>kalmiella</b> Dietz	16 localities, 4 July–16 August	34
9334	<b>crataegifoliella</b> Clemens	12 localities, 6 June–18 August	32
9335	<b>dubitella</b> Dietz	13 localities, 19 May–20 August	19
9336	<b>conspicuellla</b> Dietz	13 localities, 19 May–20 August	25



- 9337 **arbitrella** Dietz Hampton, N.H., 20 May; Lee, N.H., 11 June; Bar Harbor, 21 July, 29 July, 18 August; Millinocket, 5 August; Ashland, 4 August 7
- 9338 **vicinella** Dietz 11 localities, 3 June-20 August; Augusta, October, bred ex *Prunus* 24
- 9339 **strobivorella** Dietz Bar Harbor, 8 August; Lincoln, 10 July, 23 July; T6R7, 26 July; T11R8, 6 July; Camp Colby, 28 July; Allagash, 1 August 7
- 9340 **arbutifoliella** Dietz Bar Harbor, 19 May, 11 August; Lincoln, 21 July; T8R19, 28 July; Topsfield, 18 July 5
- 9341 **obliterella** Dietz Augusta, 4 August; Bar Harbor, 9 July, 14 July, 16 August, 18 August; Southwest Harbor, 6 June; Lincoln, 7 July; Ashland, 29 July; Topsfield, 31 July; Marion, 18 July 10
- 9342 **inositatumella** Chambers 11 localities, 2 May-11 August; Bar Harbor, emerged April 19
- 9343 **melanotella** Dietz Phippsburg, emerged 15 September 2; Augusta, 7 August; Bar Harbor, 25 May, emerged June, no date, 11 August; Enfield, 20 June; Lincoln, 7 July, 8 July, 11 July, 17 July 3, 28 July, 29 July, 3 August, 4 August, 5 August; Long A, 19 July; Masardis, 27 July 20
- 9344 **geminatella** Packard 13 localities, 20 May-16 August; Phippsburg, emerged September 2 18
- 9345 **quadripunctella** Clemens 11 localities, 16 May-24 August 18
- 9346 **innotata** Walsingham 13 localities, 7 July-5 August; Bar Harbor, emerged May 19

### Genus GRACILLARIA Haworth 1829

- 9351 **minimella** Ely Georgetown, 18 August; Augusta, 2 August; Lincoln, 21 July, 4 August; T8R19, 3 August; Camp Colby, 26 July; Marion, 25 July 7
- 9355 **flavimaculella** Ely Kingfield, 14 July; Millinocket, 2 August 2
- 9356 **cornusella** Ely Dennistown, 11 July; Greenville, 9 July; Mt. Desert Is., 16 June; Lincoln, 4 August; Long A, 3 July; T13R12, 17 July; Marion, 6 July 7
- 9357 **vacciniella** Ely Dennistown, 8 July 3, 10 July; T9R5, 7 July; T11R8, 4 July, 11 July; St. Francis, 12 July; Topsfield, 18 July, 3 August; Kellyland, 20 July; Marion, 9 July, 20 July, 27 July 14
- 9360 **bimaculatella** Ely Georgetown, 18 August; Dennistown, 12 July, 14 July, 18 July; Passadumkeag, 15 June; Lincoln, 2 July, 5 July 3, 6 July, 7 July, 8 July 4, 9 July, 10 July, 12 July 3, 13 July, 14 July 3, 16 July, 17 July 2, 18 July, 20 July, 23 July, 25 July 2, 27 July 2, 2 August, 3 August, 4 August; Long A, 17 July; Marion, 9 July, 18 July, 21 July, 3 August 50

9361	<b>burgessiella</b> Zeller	Hampton, N.H., 17 July 2; Lincoln, 16 July; Topsfield, 3 July; Marion, 9 July, 18 July, 21 July, 3 August	8
9362	<b>belfrageella</b> Chambers	Hampton, N.H., 17 May, 3 June, 15 June, 13 July, 31 July, 17 August; Lincoln, 17 July, 25 July; Dennysville, 27 July	8
9364	<b>blandella</b> Clemens	Hampton, N.H., 27 May, 31 May, 6 June, 13 June, 29 June, 30 June	6
9365	<b>juglandiella</b> Chambers	Mt. Desert, 26 May	1
9366	<b>ostryaella</b> Chambers	Lee, N.H., 20 July; Lincoln, 12 July, 16 July, 25 July; Marion, 14 July	5
9367	<b>violacella</b> Clemens	Bar Harbor, 6 August; Lincoln, 21 July	2
9369	<b>packardella</b> Chambers	12 localities, 2 July–24 August	119
9370	<b>coroniella</b> Clemens	Hampton, N.H., 7 May, 18 July, 20 September, 9 October; Lincoln, 17 July; Millinocket, 5 August	6
9372	<b>superbifrontella</b> Clemens	Hampton, N.H., 24 May, 14 June, 16 June, 21 July; Lincoln, 5 July, 8 July, 10 July, 12 July, 13 July, 17 July, 18 July, 19 July, 24 July; Long A, 3 July; Marion, 10 July, 11 July, 18 July, 2 December	18
9374	<b>negundella</b> Chambers	Hampton, N.H., 23 March, 6 May, 7 May, 20 May, 2 December	5
9374.1	species near <b>negundella</b>	Hampton, N.H., 22 May, 31 May, 7 June, 11 June	4
9375	<b>stigmatella</b> Fabricius	15 localities, 2 July–18 August	58
9375.1	<b>purpuriella</b> Chambers	12 localities, 10 April–16 August	30
9379	<b>rhoifoliella</b> Chambers	Hampton, N.H., 25 March, 9 September; Greenville, 9 July	3
9380	<b>sassafrasella</b> Chambers	Hampton, N.H., 20 May, 25 August	2
9384	<b>quercinigrella</b> Ely	Greenville, 24 July; Bar Harbor, 10 May; Lincoln, 2 July	3
9390	<b>flavella</b> Ely	Durham, N.H., 13 July; Lincoln, 11 July	2
9391	<b>alnivorella</b> Chambers	19 localities, 13 May–20 November	49
9391.1	<b>alnicolella</b> Chambers	Lee, N.H., 26 July; Mt. Desert, 21 May, 20 August; Lincoln, 9 July, 10 July, 18 July, 19 July, 20 July, 23 July, 24 July 2; T11R8, 2 July 2; Allagash, 28 July	14
9391.3	<b>sanguinella</b> Beutenmüller	Hampton, N.H., 27 April, 5 May 2, 10 October, 16 November, 26 January	6
9392?	<b>strictella</b> Walker?	Greenville, 15 July; T9R5, 25 July	2
9395	<b>serotinella</b> Ely	10 localities, 26 May–5 August	30

9397	<b>paradoxa</b> Frey & Boll	Hampton, N.H., 15 April, 16 April, 1 May, 5 May, 14 May, the latter in A.M.N.H.	5
9398	<b>fraxinella</b> Ely	Mt. Desert, 21 May, 20 August; Lincoln, 9 July, 10 July, 18 July, 19 July, 20 July, 23 July, 24 July 2; T11R8, 2 July 2	12
9398.1	<b>syringella</b> Fabricius	10 localities, 19 April-9 October	34
9399	<b>aceriella</b> Chambers	Bar Harbor, 28 July; Lincoln, 14 July	2
	species	10 localities, 4 July-11 September	18

### Family OPOSTEGIDAE

#### Genus OPOSTEGA Zeller 1839

9402	<b>albogalleriella</b> Clemens	22 localities, 2 July-10 August	123
9404	<b>quadristrigella</b> Chambers	10 localities, 8 July-5 August	22
9406	<b>cretea</b> Meyrick	10 localities, 6 July-7 August	19
9406.1	species	Dennistown, 31 July 8, Oquossoc, 29 July 3	11

### Family LYONETIIDAE

#### Genus PARALEUCOPTERA Heinrich 1918

9413	<b>albella</b> Chambers	Durham, N.H., 14 July	1
------	-------------------------	-----------------------	---

#### Genus PROLEUCOPTERA Busck 1902

9414	<b>smilaciella</b> Busck	Hampton, N.H., 9 June, 20 June, 3 July, 20 August; Bristol, 27 April, emerged August ex <i>Smilax</i> . To be expected with its food, <i>Smilax rotundifolia</i> , southwest Maine coast	4
------	--------------------------	--	---

#### Genus LYONETIA Hübner 1825

9419	<b>speculella</b> Clemens	Hampton, N.H., 13 May, 15 August 2; Auburn, no date, on pine needles; Augusta, 8 August; Enfield, 29 July; Lincoln, 26 July	7
9420	<b>saliciella</b> Busck	Augusta, 4 September	1

#### Genus BEDELLIA Stainton 1849

9423	<b>somnulentella</b> Zeller	Hampton, N.H., 22 July, 23 July, 27 July	3
------	-----------------------------	--	---

#### Genus PHILONOME Chambers 1874

9425	<b>clemensella</b> Chambers	Ft. Kent, May	2
------	-----------------------------	---------------	---

Genus **BUCCULATRIX** Zeller 1839

- 9428 **luteella** Chambers Belgrade, 29 June; Augusta, 13 June, 16 September; Bar Harbor, emerged 7 July 2; Ashland, 29 July; De Boulie Mt., 7 July; on white oak 6
- 9428.1 **recognita** Braun Durham, N.H., 5 October, widespread on bur oak; New Harbor, 30 August 2
- 9428.2 **paroptila** Braun Augusta, 30 June, 4 July 2, 8 July, 12 July, 16 July 6; Bar Harbor, 2 July, 4 July 2, 6 July; Lincoln, 6 July, 10 July, 11 July, 17 July, 19 July, 4 August; Mt. Katahdin, 11 July, 16 July; Clayton Lake, 29 July 24
- 9428.3 **fugitans** Braun Oxbow, 6 June, on *Corylus* 1
- 9429 **magnella** Chambers Augusta, 18 July 2, 30 July; Bar Harbor, 24 July, 3 August 2; Lincoln, 13 July; T18R12, 13 July; Allagash, 2 August; Edmunds, 1 August; Dennysville, 12 July, 16 July, 24 July, 28 July; Marion, 9 July, 27 July 17
- 9429.1 species near **magnella** Hampton, N.H., 15 June, 6 July 2
- 9430 **fusicola** Braun Augusta, 25 July; Bar Harbor, 21 July; Lincoln, 6 July; Marion, 6 July 4
- 9430.1 **solidaginella** Braun Augusta, 14 July, 16 July, 23 July; Bar Harbor, 16 July, 17 July, 14 August; Lincoln, 14 July, 20 July, 21 July, 23 July; Millinocket, 16 July, 22 July; T17R4, 13 July; Topsfield, 23 July; Dennysville, 17 July 2, 24 July, 1 August; Marion, 18 July 18
- 9431 **montana** Braun 12 localities, 8 July–17 August 33
- 9432 **niveella** Chambers Augusta, 10 July, 15 July; Bar Harbor, 26 June, 9 July, 18 July; Mt. Desert Is., 7 July; Lincoln, 11 July; Millinocket, 17 July; Island Falls, 21 July; Dennysville, 3 August 10
- 9432.1 **ochritincta** Braun Augusta, 10 June 2, 4 August 3
- 9432.2 **inusitata** Braun Augusta, 6 July, 12 July, 23 July; Bar Harbor, emerged 22 June, 30 June, 16 July 2; Mt. Desert Is., 2 July 8
- 9433 **cuneigera** Meyrick Greenville, 15 July; Augusta, 26 June, 24 July; Lincoln, 8 July, 10 July, 12 July, 16 July 2, 20 July, 23 July; Long A, 14 July; St. Francis, 11 July; Marion, 23 July 13
- 9434 **agnella** Clemens Bar Harbor, 1 August, 3 August, 6 August, 28 August; Lincoln, 17 July 2, 23 July, 31 July; Millinocket, 4 July; T6R7, 18 July, 19 July; T18R12, 2 August; Topsfield, 15 July; Dennysville, 7 July 2, 10 July, 12 July; Marion, 13 July, 5 August 19
- 9435 **copeuta** Meyrick Peru, miner on red oak, emerged April; Augusta, bred ex plum, emerged 29 May 2
- 9439 **packardella** Chambers Lincoln, 12 July; Millinocket, 17 July, 26 July; Dennysville, 6 August 4

9439.1	<b>needhami</b> Braun	Greenville, 28 July; Lincoln, 16 July; T11R8, 21 July	3
9440	<b>trifasciella</b> Clemens	Lee, N.H., 26 July; Lincoln, 12 July, 17 July; Sinclair, 10 July; Allagash, 29 July	5
9442	<b>coronatella</b> Clemens	Bar Harbor, 20 June; Lincoln, 15 July	2
9443	<b>immaculatella</b> Chambers	Hooksett, N.H., 22 June; Augusta, no date, on white pine; Lincoln, 23 July	3
9445	<b>quinquenotella</b> Chambers	Hampton, N.H., 22 June; Greenville, 12 July; Bar Harbor, 5 July; Lincoln, 5 July, 15 July	5
9448	<b>pomifoliella</b> Clemens	Sebago Lake (Naples), 30 July; Georgetown, 24 August; Augusta, 23 June, 4 July, 7 July 2, 1 August, 25 September; Bar Harbor, 13 August; Milo, 25 June; Lincoln, 23 July, 30 July; Topsfield, 15 July, 24 July 2; Dennysville, 11 July, 3 August; Marion, 13 July	18
9448.1	<b>canadensisella</b> Chambers	23 localities, 6 June–9 August; Augusta, emerged March	404
9449	<b>ambrosiaefoliella</b> Chambers	Marion, 3 August	1
9449.1	<b>pallidula</b> Braun?	Augusta, 3 June; Bar Harbor, emerged 1–7 July; Lincoln, 21 July	3
9451	<b>sexnotata</b> Braun	Dennistown, 25 July; Lincoln, 17 July; Cross Lake, 10 July 2; Allagash, 15 July; Marion, 31 July	6
9452	<b>ainliella</b> Murtfeldt	14 localities, 3 June–5 August, Brunswick, ex red oak, Bar Harbor, bred ex <i>Quercus borealis</i> ; Wiscasset, many, common on leaves of <i>Quercus borealis</i>	56
9452.1	<b>eclecta</b> Braun	Augusta, 5 June, 13 June 2, 18 June	4
9453.2	<b>brunescens</b> Braun	Lincoln, 22 July; Marion, 9 July	2
9456	<b>angustata</b> Frey & Boll ( <b>crescentella</b> Braun)	12 localities, 17 May–21 September	52
9456.1	<b>adelpha</b> Braun	Dennysville, 18 July	1
9460	<b>salutataria</b> Braun	Parke Reserve, Que.	1
9463	<b>fugitans</b> Braun	Augusta, 7 July; Bar Harbor, 4 July; Lincoln, 30 July; Oxbow, 6 July 2 on <i>Corylus</i> ; T11R8, 9 July; Cross Lake, 6 July; Dickey, 6 July	8
9463.1	<b>callisticha</b> Braun	Greenville, 26 July; Lincoln, 8 July, 17 July, 27 July, 10 August	5
9467	<b>transversata</b> Braun	August, 4 July 2, 16 July	3

## Family TISCHERIIDAE

### Genus TISCHERIA Zeller 1839

- 9483 **clemensella** Chambers Augusta, 26 June, 29 July, 23 August, 24 August, 9 September, 18 September 6
- 9487 **citrinipennella** Clemens Augusta, emerged June ex *Quercus borealis*, 11 July 2
- 9490 **badiiella** Chambers Hampton, N.H., 13 May 3; Kellyland, 9 July 4
- 9491 **albostraminea** Walsingham Augusta, 30 June, 15 October; Bar Harbor, 17 September; Greenbush, 8 July 3
- 9494 **tinctoriella** Chambers Bar Harbor, 21 March 1
- 9496 **solidaginifoliella** Clemens Augusta, 20 August 4, 21 August, 23 August 5, 29 August, 31 August, 5 September, 11 September, most bred; Jefferson, 16 August; Bristol, collected August 30, bred on *Solidago*; Bar Harbor, 16 August 2, 24 August, 27 August 2, all bred; Southwest Harbor, 28 May 22
- 9498 **explosa** Braun Lee, N.H., 3 August; Ashland, 29 July 2
- 9508 **malifoliella** Clemens Hampton, N.H., 25 June, 30 July; Augusta, 20 August 3
- 9509 **aenea** Frey & Boll Boothbay Harbor, 13 September; Augusta, 17 May, 1 August, 9 August emerged ex blackberry; Bar Harbor, 19 August 2; Lincoln, 6 September 7

### Genus COPTOTRICHE Walsingham 1890 (TISCHERIA Zeller 1839)

- 9512 **zelleriella** Clemens Hampton, N.H., 1 May, 23 May, 23 August; Augusta, emerged ex white oak, April; Winslow, 16 March 5

## Family PSYCHIDAE

### Genus HYALOSCOTES Butler 1881

- 9533 **pithopoera** Dyar Medomac, Pemaquid Sanctuary, 14 July; Orland, emerged 10 July; Augusta, emerged May, emerged June 4; Smithfield, emerged May, emerged, June 3, emerged 5 July 25, 10 July 12 parasites emerged; Bar Harbor, May 4 parasites emerged; Bremen, Lincoln Co., 29 old larval cases on old tombstones 34

### Genus FUMARIA Haworth 1811

- 9538 **casta** Pallas (*Psyche* Schrank) Fryeburg, 5 June 3 emerged; 7 June 1 emerged, 8 June, 1 emerged; Bristol, 21 June; Bremen, 15 old cases on tombstones; Blue Hill, 26 June, many on building, all females 16

**Genus SOLENOBIA Zeller (Duponchel 1942 MONA)**

- 9539 **walshella** Clemens 11 localities, 3 May-17 November 46

**Family ACROLOPHIDAE****Genus ACROLOPHUS Poey 1832**

- 9556 **plumifrontellus** Clemens Franconia, White Mountains, N.H., no date 1
- 9582 **arcanelus** Clemens Hampton, N.H., 8 June, 6 July, 8 July 2, 14 July, 20 July 6
- 9585 **moros** Grote Hampton, N.H., 11 October, 11 November; Nashua, N.H., October; Durham, N.H., 22 October 5 8

**Family TINEIDAE****Genus AMYDRIA Clemens 1859**

- 9586 **brevipennella** Dietz Durham, N.H., T6R14, 22 July; Topsfield, 3 August 3
- 9587 **effrontella** Clemens 39 Localities, 2 July-10 August 220
- 9587.1 species T6R7, 21 July; Ashland, 3 July 2

**Genus SCARDIA Treitschke 1830**

- 9615 **anamotella** Grote Norway Bay, Que., 20 June, 26 June; York Co., August; Biddeford, 28 June; Lincoln (Clayton); Eustis, 21 July 6
- 9623 **approximatella** Dietz 11 localities 18

**Genus XYLESTHIA Clemens 1859**

- 9626 **pruniramiella** Clemens Hampton, N.H., 10 July, 16 July, 24 July 2, 25 July, 27 July; Gorham, 8 August; Long A, 29 July 8

**Genus KEARFOTTIA Fernald 1904**

- 9629 **albifasciella** Fernald Lincoln, 7 July, 8 July, 10 July 2, 13 July 3, 14 July 2, 15 July, 16 July, 17 July, 22 July 2, 23 July; Long A, 17 July, 19 July; Millinocket, 23 July, 28 July 21

**Genus MONOPIS Hübner 1825**

- 9630 **rusticella** Hübner 14 localities, 22 May-25 July 39
- 9631 **biflavimaculella** Clemens (**spilotella** Tengström) 38 localities, 4 June-21 September 483
- 9632 **marginistrigella** Chambers Oquossoc, 7 July; Dennistown, 8 July; Tim Pond, 13 July; Caucmogomoc, 30 June; T8R13, 11 July; T15R9, 3 July; Kellyland, 17 July 7

- 9633 **monachella** Hübner Sebago Lake, 30 July; Augusta, 30 July; Hope, 6 August; Bar Harbor, 20 July; Mt. Desert, 7 August; Greenbush, 18 July; T15R9, 25 July; Dennysville, 6 July, 20 July; Marion, 10 July, 13 July, 14 July, 15 July, 18 July, 20 July 2, 23 July 3, 30 July 20
- 9633.1 species Augusta, 12 August; Marion, 3 July, 4 July, 10 July, 11 July, 20 July, 23 July 3 10
- 9634 **dorsistrigella** Clemens 33 localities, 26 May–15 August 135
- 9635 **crociacapitella** Clemens Oquossoc, 13 July; Greenville, 28 June, 9 July; Lincoln, 11 July; Mt. Katahdin, 8 July; T15R9, 9 July, 11 July; Allagash, 29 July 9
- 9636 **irroredella** Dietz Newago Lake, St. Francis, Que., 22 July; Hampton, N.H., 9 June, 9 July, 22 July, 1 August, 14 August; Skinner (Jackman), 1 July; Greenville, 29 June; Bar Harbor, 6 August 2; T15R9, 10 July; Marion, 23 July 12

### Genus CHOROPLECA Durrant 1914

- 9640 **vesaliella** Chambers Hampton, N.H., 9 August; Bar Harbor, 6 July; Mt. Desert Is., 28 June; Enfield, 14 June; Lincoln, 5 July, 25 July, 29 July 2; T15R9, 10 July 9

### Genus TINEA Linnaeus 1758

- 9641 **missella** Zeller Chesuncook, 20 July; Bar Harbor, 17 June, 18 August; Mt. Desert, 28 June; Topsfield, 5 August; Dennysville, 9 August 6
- 9642 **obscurostrigella** Chambers Hampton, N.H., 1 July, 6 July, 21 July, 22 July, 24 July, 27 July; Seboomook, 22 July; Bar Harbor, 21 July, 8 August; Lincoln, 27 July; Mt. Katahdin, 9 July; Allagash, 12 July 12
- 9643 **fuscipunctella** Haworth 21 localities, 26 May–10 August 133
- 9645 **apicimaculella** Chambers Chesuncook, 10 July; Augusta, 10 July; Bar Harbor, 24 May; Lincoln, 6 July, 8 August, 14 July; Ashland, 2 July; T11R8, 18 July, 21 July, 29 July; T5R16, 22 July; Marion, 8 July 12
- 9648 **bimaculella** Chambers 17 localities, 23 June–27 August 25
- 9649 **trimaculella** Chambers 42 localities, 10 May–22 August, Cape Elizabeth, emerged 4 May ex barnswallow's nest 169
- 9650 **carnariella** Clemens 21 localities, 3 July–8 August 103
- 9651 **griscella** Chambers Augusta, 21 August 1
- 9652 **grumella** Zeller 19 localities, 8 July–4 August 28
- 9652.1 species Greenville, 10 June; Augusta, 17 July 2
- 9653 **pellionella** Linnaeus Hampton, N.H., 25 June 3, 29 June, 6 July, 18 July, 24 July, 25 July; Durham, N.H., December, January, reared from *Acer*



- tree fungus; Augusta, 31 May, 22 July, 26 July; Bar Harbor, 26 May, 4 July, 14 July, 27 July; Mt. Desert Is., 4 July, 12 July; Shin Pond, 26 July; Aurora, 26 August, 24 reared from bluebird nests 45
- 9659 **croceoverticella** Chambers 18 localities, 23 May–8 August; Mt. Desert Is., 4 August 2, det. Forbes 30
- 9660 **thoracestrigella** Chambers? T15R9, 22 July 1
- 9666 **ophrionella** Dietz 20 localities, March (bred)–6 August 47
- 9672 **rileyi** Dietz Bar Harbor, 26 May, 6 June, 18 July 3, 20 August, 31 August; Passadumkeag, 24 June 3, 25 June; Lincoln, 4 August 2; Dennysville, 9 July 14
- 9673 **multistriatella** Dietz 14 localities, 10 June–6 August 42
- 9674 **molybdanella** Dietz T5R16, 22 July, 24 July, 29 July; T7R17, 5 July; Greenville, 26 July, 27 July, 30 July; Augusta, 8 August; Greenbush, 8 July; Lincoln, 5 August; T11R8, 18 July, 21 July; T17R4, 13 July; Kellyland, 8 August 14
- species near **molybdanella** Chesuncook, 24 July; Pittston Farm, 31 July; Ashland, 15 July 3
- 9676 **arcella** Fabricius 11 localities, 1 July–5 August 16
- 9677 **auropulvella** Chambers 28 localities, 26 June–24 August 132
- 9678 **acapnopennella** Clemens 18 localities, 25 May–8 August 27
- 9679 **tylodes** Meyrick 13 localities, 6 July–11 August 19
- 9681 **defectella** Zeller Hampton, N.H., 25 May, 27 May, 6 June, 12 June, 3 August 5
- 9682 **apicisignatella** Dietz 27 localities, 25 June–8 August 81
- 9683 **angulifasciella** Dietz 22 localities, 26 May–5 August 54
- 9684 **marmorella** Chambers Strong, ex logs *Betula papyrifera* 3; Kokadjo, 24 July 3; Augusta, 21 April, in a house; Bar Harbor, 17 June; Mt. Desert Is., 8 August; Passadumkeag, 24 June; Lincoln, 31 July; Long A, 19 July; T11R8, 21 July; T8R19, 1 August; Quebec City, no date 15
- 9686 **granella** Linnaeus 17 localities, March (bred)–12 October (bred) 66
- species near **granella** Dennistown, 29 July; Greenville, 4 August; Tim Pond, 17 July; Augusta, 5 October; T8R13, 5 July 5
- 9687 **cloacella** Haworth Hampton, N.H., 5 May, 1 June, 6 June 2, 9 June, 10 June 2, 31 July; Oquossoc, 17 July, 10 August; Bar Harbor, 26 May 3, 28 May 2, 6 June, 13 July, 29 July; Nicasious Lake, 30 July; Cross Lake, 10 July; T15R9, 13 July 22
- 9688 **interstitiella** Dietz Oquossoc, 21 July; Chesuncook, 22 July 2

- 9689 **fulvisuffusella** Dietz 12 localities, 2 April–13 September; Oquossoc, 8 April, bred ex log *Betula papyrifera* 16
- 9691 **marginimaculella** Chambers Hampton, N.H., 11 June; Quebec City, no date; Lincoln, 14 July; De Boulie Mt., 17 July; Little Russell Mt., 11 July 5
- 9693 **nigroatomella** Dietz Rockwood, 18 July; T9R5, 31 July; Shin Pond, 10 July; Ashland, 29 July

### Genus HOMOSTEINIA Dietz 1905

- 9694 **curviliniella** Dietz Oquossoc, 18 July; Lincoln, 10 July; Millinocket, 26 July, 30 July; Sinclair, 18 July; Marion, 8 July 6

### Genus TINEOLA Herrich-Schaeffer 1853

- 9695 **biseliella** Hummel Hampton, N.H., 26 June, 20 August, 1 September; Augusta, 14 June 2, 23 July, 1 August, 8 August; Bar Harbor, 24 May, 2 July, 1 September; Easton, 16 June 12

### Genus HYBROMA Clemens 1862

- 9697 **servulella** Clemens Hampton, N.H., 26 July; Georgetown, 18 August; Oquossoc, 13 July; Lincoln, 2 August; T9R5, 7 July 5

### Genus MEA Busck 1906

- 9699 **skinnerella** Dietz Millinocket, 26 July; Kellyland, 20 July 2

### Genus DIACHORISIA Clemens 1860

- 9702 **velatella** Clemens Hampton, N.H., 10 June, 12 June, 23 July, 6 August, 12 August; Kingfield, 4 August; Augusta, 4 August; Lincoln, 24 July 8

### Genus HOMOSETIA Clemens 1863

- 9703 **argentistrigella** Chambers Greenville, 30 July; Kingfield, 26 July 2
- 9704 **argentinotella** Chambers 19 localities, 13 June–2 August 125
- 9705 **crstatella** Chambers 13 localities, 7 July–8 August; China, bred ex *Betula papyrifera*, March 24
- 9706 **obscurella** Dietz 25 localities, 4 July–6 August 134
- 9707 **chrysoadpersella** Dietz Kokadjo, 18 July; Augusta, 15 October; Lincoln, 8 July, 13 July 2, 16 July, 17 July, 23 July, 3 August 2; Long A, 17 July, 18 July; Marion, 14 July 13
- 9708 **costisignella** Clemens Dennistown, 12 July, 14 July; Greenville, 9 July; Augusta, 3 June; Lincoln, 22 July, 24 July, 3 August; Millinocket, 9 July, 26 July; T11R98, 11 July; T8R9, 29 July; T6R11, 1 August; Princeton, 8 July 13

9709	<b>fasciella</b> Chambers	13 localities, 3 July-10 August	48
9710	<b>maculatella</b> Dietz	Bar Harbor, 29 July	1
9711	<b>miscecristatella</b> Chambers,	18 localities, 3 July-8 August	62

### Genus LEUCOMELA Dietz 1905

9717	<b>miramella</b> Dietz	16 localities, 8 July-8 August	32
------	------------------------	--------------------------------	----

### Family NEPTICULIDAE

#### Genus NEPTICULA Heyden 1843

9719.1	<b>sericopeza</b> Zeller	New Hampshire, larva in base of seed wing of Norway Maple	1
9722	<b>quadrinotata</b> Braun	Augusta, June 22; Portage, June 6	2
9723	<b>trinotata</b> Braun	T11R8, 4 August	1
9725	<b>bifasciella</b> Clemens	Augusta, 27 August; Oquossoc, 24 July; Kingfield, 26 July, 28 July, 2 August; Lincoln, 11 July, 26 July, 1 August; Long A, 12 July, 23 July; Millinocket, 17 July, 20 July, 24 July, 28 July 2	15
9726	<b>intermedia</b> Braun	Eustis, 26 July; Augusta, 29 July; Bar Harbor, 3 July; Millinocket, 28 July 3; Dennysville, 16 July	7
9727	<b>cerea</b> Braun	Dennistown, 29 July, 31 July; Lincoln, 17 July, 23 July, 25 July; T18R12, 23 July	11
9730	<b>rhoifoliella</b> Braun	Mt. Vernon, 8 June; Greenville, 20 July; Lincoln, 17 July	3
9733	<b>resplendensella</b> Chambers	Lincoln, 17 July; Millinocket, 12 July	2
9734	<b>unifasciella</b> Chambers	Georgetown, 29 July; Dennistown, 16 July, 18 July, 27 July; Greenville, 15 July; Lincoln, 5 July, 11 July, 14 July, 17 July, 27 July, 29 July, 31 July; Marion, 13 July, 18 July	14
9735	<b>purpuratella</b> Braun	Dennistown, 18 July; Greenville, 15 July; Lincoln, 10 July; Millinocket, 26 July, 28 July 4; T9R5, 8 July, 26 July; Dennysville, 18 July; Marion, 9 July	12
9738	<b>ostryaefoliella</b> Clemens	Mt. Desert Is., 24 May; Lincoln, 5 July 2, 12 July, 17 July, 20 July, 22 July 2, 25 July, 30 July; Millinocket, 28 July; Stacyville, emerged 29 June; Dickey, 6 July; Topsfield, 23 July	14
9743	<b>corylifoliella</b> Clemens	Augusta, along the Kennebec River, 1 August; Lincoln, 13 July	2
9745	<b>quercipulchrella</b> Chambers	Lincoln, 12 July 2, 17 July 2	4
9747	<b>juglandifoliella</b> Clemens	Millinocket, 31 July	1
9748	<b>apicialbella</b> Chambers	Greenville, 9 July 2; Bethel, 10 July; Augusta, 2 June, 8 August, 27 August; Bar Harbor, 4 July; Lincoln, 10 July, 11 July,	

	12 July, 17 July, 18 July, 24 July; Cross Lake, 8 July; Allagash, 29 July; Dennysville, 8 July	16
9750	<b>rubifoliella</b> Clemens Bar Harbor, 15 August; Lincoln, 14 July	2
9752	<b>nyssaefoliella</b> Chambers Georgetown, 29 July; Lincoln, 12 July	2
9753	<b>slingerlandella</b> Kearfott Lincoln, 5 July; Millinocket, 28 July; Patten, 20 July; Shin Pond, 1 July; T9R5, 7 July	5
9754	<b>rosaefoliella</b> Clemens York Beach, 14 May; Lincoln, 11 July	2
9756	<b>fuscotibiella</b> Clemens Dennistown, 21 August; Greenville, 25 July; Augusta, 22 July; Lincoln, 12 July; Millinocket, 8 July	5
9758	<b>ulmella</b> Braun Dennistown, 20 July; Lincoln, 7 July; Dennysville, 21 July	3
9762	<b>similella</b> Braun? T9R5, 16 July	1
9763	<b>thoracealbella</b> Chambers Augusta, 5 August; T9R5, 2 August	2
9764	<b>pomivorella</b> Packard Scarborough 10 June; Augusta, 8 July; Lincoln, 17 July, 25 July, 4 August; Marion, 9 July	8
9766	<b>flavipedella</b> Braun? Lincoln, 25 July	1
9773	<b>crataegifoliella</b> Clemens Whitefield, emerged 7 July; Lincoln, 25 July	2
9774	<b>nigriverticella</b> Chambers Lincoln, 21 July, 29 July	2
9775	<b>populetorum</b> Frey & Boll? Kokadjo, 31 July; Lincoln, 8 July, 24 July, 28 July, 4 August 3; T9R5, 7 July; Dennysville, 3 August 2	10
9776	<b>sanginella</b> Clemens? T5R16, 28 July; Oquossoc, 23 July, 4 August; Jackman, 30 July; Greenville, 15 July; Lincoln, 18 July; T8R19, 26 July	7
9777	<b>pallida</b> Braun Oquossoc, 29 July; Greenville, 26 July; Lincoln, 18 July, 21 July, 26 July, 29 July; Marion, 3 August	7?

### Genus ECTOEDEMIA Busck 1907

9782	<b>obruptella</b> Zeller 25 localities, 13 July-29 August	120
9783	<b>populella</b> Busck 26 localities, 2 May-17 September	144
9784	<b>castaneae</b> Busck Oquossoc, 1 August; Tim Pond, 22 July; Dennistown, 23 July, 6 August, 27 August; T8R19, 10 August; Bar Harbor, 7 June; Mt. Desert Is., 10 June; Lincoln, 17 July, 26 July, 30 July, 2 August, 3 August, 5 August; Long A, 12 July; T6R7, 21 July; Dickey, 7 July 3	19
9785	<b>phleophaga</b> Busck T13R12, 12 July; Oquossoc, 12 July, 13 August 3; Tim Pond, 22 July, 6 August; Dennistown, 15 July, 20 July 2, 5 August 3; Kokadjo, 31 July 3; Rockwood, 9 August; Lincoln, 12 July, 14 July, 17 July 3, 18 July 3, 25 July 3; Ashland, 15 July; T15R13, 8 August; T18R12, 2 August	31

- 9786 **heinrichi** Busck Oquossoc, 12 July; Tim Pond, 26 August; Bar Harbor, 7 June; Lincoln, 28 July 2; Long A, 29 July; Millinocket, 28 July; Patten, 30 July; Dennysville, 3 August 9
- species of **ECTOEDEMIA** Augusta, 28 May; Lincoln, 23 July; Allagash, 14 July 3

### Genus **OBRUSSA** Braun 1915

- 9788 **ochrefasciella** Chambers Greenville, 21 July; T11R8, 4 July 2, 13 July, 15 July, 18 July 6

### Genus **GLAUCOLEPIS** Braun 1917

- 9789 **saccharella** Braun Hampton, N.H., 14 July; Lac Frontiere, 3 August; Dennistown, 5 July; Oquossoc, 13 July; Augusta, 28 June; Lincoln, 27 June, 13 July; Millinocket, 10 July; Topsfield, 18 July 9
- species of **GLAUCOLEPIS** Lincoln, 10 July, 21 July 2

### Family **INCURVARIIDAE**

#### Genus **LAMPRONIA** Stephens 1829

- 9793 **russatella** Clemens New Hampshire, no date; Knowlton, Que., 4 July, 9 July; Maria, Que., 25 July 2 5
- 9793.1 species near **russatella** Mt. Katahdin, 2900 ft., 8 July 1
- 9794 **taylorella** Kearfott Gordon, N.H., 20 July; Mt. Washington, N.H., 4000 ft., 15 May, 18 July 3
- species of **LAMPRONIA** Oquossoc, 8 July; O.J.I. Mt., Mt. Katahdin area, 16 July 2
- 9794.1 **rubiella** Bjerkander Perce, Que., no date; Fredericton, N.B., 15 June, no date emerged ex raspberry 3; Spring Hill, N.B., 14 June, 16 June 2; St. Andrews, N.B., 29 June; presumably in Maine 8
- 9803 **sublustris** Braun Spring Hill, N.B., 13 June, 16 June 2 3

#### Genus **PARACLEMENSIA** Busck 1904

- 9817 **acerifoliella** Fitch Hampton, N.H., 1 June 2, 8 June, 12 June, 13 June; Pemaquid Pt., 3 June; Augusta, 22 May; Bar Harbor, 27 May, 29 May; Mt. Desert, 6 June; Seal Harbor, 26 May; Lincoln, 11 July, 17 July; Long A, 17 July; abundant in the Northeast on hard maple 10

#### Genus **ISOCORYPHA** Dietz 1905

- 9819 **mediostriatella** Clemens (**TINEIDAE** MONA) Oquossoc, 4 July 1

#### Genus **EUDARCIA** Clemens 1860

- 9821 **simulatricella** Clemens (**TINEIDAE** MONA) Hampton, N.H., 4 July 2, 8 July 3

**Family ADELIDAE****Genus NEMOTOIS Hübner 1825**

- 9838 *bellela* Walker Thunder River, Que., 27 June; Smoky Falls, Mattagami River, Que., 4 July 2

**Genus ADELA Latreille 1796**

- 9839 *ridingsella* Clemens Hampton, N.H., 8 June, 10 June, 12 June, 21 June, 28 June; Norway, S.M. Smith, no date 2; Vassalboro, July; Augusta, 28 June 2, 12 July; Oquossoc, 12 July; Enfield, 5 July; Lincoln, 5 July; Mt. Katahdin, 4600 ft., 27 July; Depot Camp, 1100 ft., 7 July; Ashland, 9 July; T11R8, 9 July; Bar Harbor, 1 May, a pair at willow, 9 May 2 at willow 22
- 9844 *purpurea* Walker Norway, no date 2; Camden, 29 April; Bar Harbor, 27 April 2, 1 May, 2 May, 9 May 2; Mt. Desert, 1 May; Orono, no date Fer-nald; Enfield, 1 May, 5 May 13
- 9847 *bella* Chambers Kazubazua, Que., 18 August 1

**Family ERIOCRANIIDAE****Genus MNEMONICA Meyrick 1912**

- 9854 *griseocapitella* Walsingham Hampton, N.H., 6 June 1

**Family MICROPTERYGIDAE****Genus EPIMARTYRIA Walsingham 1898**

- 9856 *auricrinella* Walsingham Woolwich, 29 June; Monmouth, 20 June, 27 July; W Farmington, 29 June; Greenville, 9 July; Bar Harbor, 25 April; Mt. Desert Is., 2 June 2; Passadumkeag, 25 June; Mt. Albert, Que., 22 July; Tabletop Mt., Que., 19 June 2, 21 July 3 15

**Family HEPIALIDAE****Genus STHENOPIS Packard 1864**

- 9858 *argenteomaculatus* Harris 27 localities, 9 June-29 August 45
- 9859 *purpurascens* Packard Bridgton, 13 June 2; Perham, 20 June; Lincoln, no date; Allagash, 14 July; Estcourt Station, 6 July; Sinclair, 15 July; Guerette, 13 July 8
- 9860 *quadriguttatus* Grote 16 localities, 6 July-16 August 27
- 9862 *auratus* Grote Mt. Washington, N.H., 1500 ft., 24 July; E. Boothbay, 28 June; Rockwood, 14 July, 19 July; Lincoln, 8 July, 9 July; Alder Stream, 29 July; T9R3, 14 July; St. Francis, 21 July 9

**Genus HEPIALUS Fabricius 1775**

- 9863 **hyperboreus** Moeschler Mt. Washington, N.H., September; Alpine Gardens, Mt. Washington, N.H., 23 August; Mt. Pleasant House, N.H., 7-10 August 10: Biddeford, 29 July-12 August, number? 12
- 9870 **mustelinus** Packard Hampton, N.H., 6 August, 15 August; Kittery Pt., 2 August; Biddeford, 26 July; Old Orchard Beach, July; Cape Elizabeth, no date; Brunswick, no date 7
- 9871 **gracilis** Grote 40 localities. Larva feeds in thick moss aboveground 40

## INDEX

- abella*, species near 8026  
*aberratella* Busck 8341  
*abietisella* Packard 7880.1  
*absconditiella* Walker 7814  
*acapnopennella* Clemens  
 9678  
*acenteta* Braun 9048.1  
*aceriella* Chambers 9399  
*aceriella* Clemens 9265  
*acerifoliella* Fitch 9817  
*acerni* Clemens 8727  
*acerrubri* Englehardt 87-6  
*Acrocercops* 9297  
*Acrolepia* 8866  
 ACROLOPHIDAE 9556  
*Acrolophus* 9556  
*acuminatoides* McDun-  
 nough 9124.2  
*Adela* 9839  
 ADELIDAE 9839  
*adelpha* Braun 9456.1  
*Aegeria* 8690  
 AEGERIIDAE 8684  
*aenea* Frey & Boll 9509  
*aeneusella* Chambers  
 9094  
*aequepavella* Chambers  
 8347  
*aeriferella* Clemens 9209  
*aesella* Chambers 8976  
*aethiops* Humphrey &  
 Westwood 7932  
*agnella* Clemens 9434  
*Agonopterix* 8409  
*agrimoniella* Clemens 8275  
*ainsliella* Murtfeldt 9452  
*alacella* Clemens 8284  
*alaricella* Busck 8169  
*albaciliaella* Chambers 8624  
*albaciella* Busck 8821  
*albanotella* Chambers 9173  
*albapalpella* Chambers 7746  
*albapalpella* species near  
 7746.1  
*albapalpella* Chambers  
 9021.1  
*albapunctella* Busck 7765  
*albella* Chambers 9413  
*albicapitella* Engel 9037  
*albicostella* Braun 9325  
*al bifasciella* Fernald 9629  
*albinatella* Chambers 9297  
*albogalleriella* Clemens 9402  
*albostraminea* Walsingham  
 9491  
*albovanescens* Heinrich 9060  
*Albuna* 8763  
*Alcathoe* 8685  
*algidella* Walker 8585  
*alienella* Busck 8393  
*allenella* Walsingham 8464  
*Allonyma* 8645  
*alni* Walsingham 9201  
*alnicolella* Walsingham 9200  
*alnicolella* Chambers 9391.1  
*alnifoliae* Barasch 9091.1  
*alternatella* Kearfott 8882  
*alticolella* Zeller 9120.5  
*ambrosiaefoliella* Chambers  
 9449  
*ambrosiella* Chambers 9272  
*ampelopsiella* Chambers  
 8978  
*ampelopsiella* Chambers  
 9307  
*ampla* Dietz 8551  
*Amydria* 9586  
*Anacampsis* 8279  
*anamotella* Grote 9615  
*Anarsia* 8288  
*andropogonis* Braun 7799  
*angulifasciella* Dietz 9683  
*angustata* Frey & Boll 9456  
*angustipennella* Clemens  
 7806  
*angustipennella* Dietz 8559  
*annettella* Busck 8887  
*Anorthosia* 8305  
*Anthophila* 8643  
*Antispila* 8978  
*aphidiella* Walsingham 8501  
*apicialbella* Braun 9095  
*apicialbella* Chambers 9748  
*apicimaculella* Chambers  
 8897  
*apicimaculella* Chambers  
 9645  
*apicisignatella* Dietz 9682  
*apicitripunctella* Clemens  
 7880  
*apocynella* Braun 9287  
*approximatella* Dietz 9623  
*arbritella* Dietz 9337  
*arbutifoliella* Dietz 9340  
*arcanelus* Clemens 9582  
*arcella* Fabricius 9676  
*arcuella* Braun 9253  
*arcuella* Clarke 8437.1  
*arenella* Forbes 8024  
*argenteomaculatus* Harris  
 9858  
*argentialbella* Chambers  
 9079  
*argenticinctella* Clemens  
 8361  
*argentifimbriella* Clemens  
 9171  
*argentistrigella* Chambers  
 9703  
*argentosa* Braun 9016  
*argillacea* Walsingham  
 8413  
*argutiola* Hodges 7965.2  
*Argyresthia* 8879  
 ARGYRESTHIIDAE 8879  
*argyrospendella* Dietz 8497  
*Aristotelia* 7805  
*Arogalea* 7931  
*artemisiella* Kearfott 8190  
*atlantica* Heinrich 9067  
*atriplicella* Røsterstamm  
 8194, 8219  
*atrocapitella* McDunnough  
 8405.1  
*atrodorsella* Clemens 8409  
*atromarginata* Braun 9059  
*atrupictella* Dietz 7908  
*Atteva* 8939  
*attributella* Walker 7923  
*ascriptella* Busck 8369  
*asema* Clarke 8077.1  
*astericola* Frey & Boll  
 9300  
*astericola* Heinrich 9127  
*augusti* Heinrich 8522  
*auratella* Braun 9285  
*auratus* Grote 9862  
*aurea* Fitch 8939  
*aureoargentella* Brower  
 8885.1  
*auricrinella* Walsingham  
 9856



- auronitens Frey & Boll 9192  
 auropulvella Chambers 9677  
 aurorella Dyar 8463  
 austerella Zeller 8913  
 badiella Chambers 9490  
 banksiella Busck 8170  
 basifasciella Zeller 7934  
 basilarella Dietz 8555  
 basilaris Zeller 8950  
 basipallidella Dietz 8500  
 basistrigella Clemens 9214  
 bassetella Clemens 8806  
 batanella Busck 8191  
 bataviella Braun 9166  
 Batrachedra 7696  
 Battaristis 8255  
 Bedellia 9423  
 belangerella Chambers 7937  
 belangerella Chambers 8904  
 belfrageella Chambers 9362  
 bella Chambers 8815  
 bella Chambers 9847  
 Bembecia 8684  
 bethunella Chambers 9256  
 betulella Busck 8406  
 betulivora Walsingham 9254  
 Bibarrambia 8464  
 bibionipennis Boisduval  
 8697  
 bicostomaculella Chambers  
 7925  
 bicostomaculella Chambers  
 7954  
 bidens Braun 9124.3  
 bifasciella Clemens 9725  
 biflavimaculella Clemens  
 9631  
 bimaculatella Ely 9360  
 bimaculella Chambers 7975  
 bimaculella Chambers 9648  
 bipunctella Busck 7858  
 bipunctella Fabricius 8622.1  
 bipunctella Walsingham  
 8306  
 biseliella Hummel 9695  
 bispinatella McDunnough  
 9120.7  
 blancardella Fabricius  
 9204.1  
 blandella Clemens 9364  
**BLASTOBASIDAE** 8332,  
 8341, 8345, 8478  
**Blastobasis** 8478  
**Blastobasoides** 8485.1  
**Blastodacna** 7705  
 bolteri Henry Edwards 8716  
 boreasella Chambers 8358  
 boreasella Dietz 8524  
 borkhauseni Zeller 8358  
 Borkhausenia 8369  
 bottoneri Busck 7751.1  
 brachelytrifoliella  
 Clemens 9010  
 branella Busck 7960  
 branella species near  
 7960.1  
 braunae Clarke 8461  
 brevippennella Dietz  
 9586  
 brevivittella Clemens  
 7748  
 brunescens Braun 9453.2  
 Brymbilia 8365  
 Bucculatrix 9428  
 burgessiella Zeller 9361  
 busckella Ely 7800  
 busckiella Dietz 8513  
 busckiella Kearfott 8165  
 caespititiella Zeller 9133  
 californiae Walsingham  
 8673  
 Callima 8361  
 calliphanes Meyrick 8889  
 calliphanes species near  
 8889.1  
 callisticha Braun 9463.1  
 Callisto 9330  
 Calosima 8497  
 canadensis Busck 8417.1,  
 8434  
 canadensisella Chambers  
 9448.1  
 canadensisella McDunnough  
 9108.1  
 canella Busck 8433  
 caritella Busck 8465  
 carnariella Clemens 9650  
 Carolina 8369  
 carpinella Heinrich 9086  
 caryaefoliella Clemens 9085  
 casta Pallas 9538  
 castaneae Busck 8722  
 castaneae Busck 8924  
 castaneae Busck 9784  
 castaneaeella Chambers 9259  
 castaneella Busck 8894  
 caudata Harris 8685  
 ceanothiella Braun 7899  
 cephalonhiella Chambers  
 7735  
 cerasivolella Packard 9099  
 cerea Braun 9729  
 chalcochrysa Meyrick 8892  
 chalcofrontella Clemens 8511  
 chenopodiella Busck 8319  
 chenopodiella Hübner 8965.1  
 Choreutis 8645, 8649.1  
 Choropleca 9640  
 chrysoadpersella Dietz 9707  
 Chrysoclista 7673  
 Chrysopelia 7706  
 Chrysophora 7854  
 cicutaeella Kearfott 7768  
 cinerella Chambers 9102  
 cinereocostella Clemens 8408  
 ciniflonella Lienig & Zeller  
 8436  
 circumscriptella Chambers  
 8679  
 circumscriptella Zeller 7750  
 circumscriptella species near  
 7750.1  
 citricolella Chambers  
 8486-8487?  
 citrinipennella Clemens 9487  
 clandestinella Busck 7688  
 claudiella Kearfott 7755  
 clemensella Chambers 8430  
 clemensella Chambers 9169  
 clemensella Chambers 9425  
 clemensella Stainton 7675  
 clemensiella Chambers 9483  
 cloacella Haworth 9687  
 coccivorella Chambers  
 8486-8487  
 Coleophora 9056  
**COLEOPHORIDAE** 9056  
 coloradella Walsingham  
 8367  
 coloradensis Busck 7976  
 Compsolechia 8269  
 comptoniella McDunnough  
 9089  
 conclusella Walker 8279  
 concolorella Clemens 9104  
 confluentella Dietz 8512  
 confusella group 8105 ±  
 conjugella Zeller 8903  
 conspicuella Dietz 9336

- constrictella Zeller 7862  
 continuella Zeller 8005  
 copeuta Meyrick 9435  
 Coptodisca 8994  
 Coptotriche 9512  
 corni Henry Edwards 8705  
 cornifoliella Clemens 8980  
 cornusella Ely 9356  
 coronatella Clemens 9442  
 coroniella Clemens 9370  
 coruscipennella Clemens 9092  
 corylifoliella Clemens 9743  
 corylisella Chambers 9262  
 Cosmopterix 7674  
**COSMOPTERYGIDAE**  
 7673  
 costarufuella Chambers 8324  
 costisignella Clemens 97-8  
 crataegella Busck 7898.1  
 crataegella Clemens 9203  
 crataegifoliella Clemens 9334  
 crataegifoliella Clemens 9773  
 cratipennella Clemens 9120  
 Cremastobombycia 9271  
 crescentella Braun 9456  
 cretaticastella Clemens 9074  
 cretea Meyrick 9406  
 cristatella Chambers 9705  
 cristifasiella Chambers 7931  
 croceoverticella Chambers 9659  
 crociapiella Clemens 9635  
 cryptolechiella Chambers 8471, 8472, 8474  
 cucullata Braun 9044  
 cuneigera Meyrick 9433  
 cuprescens Braun 8925  
 curvilineella Beutenmueller 8439  
 curvilineella Chambers 7705  
 curviliniella Dietz 9694  
 Cyphophora 7738  
 dapifera Hodges 7683.1  
 Dasycera 8353  
 Decantha 8358  
 deceptusella Chambers 9198  
 decorella Stephens 7762.1  
 defectella Zeller 9681  
 definitella Zeller 7753  
 dentiferella Walsingham 8845  
 Depressaria 8393  
 Depressariodes 8433, 8436, 8446  
 desmodiella Clemens 9268  
 detersella Clemens 8194  
 Diachorisia 97-2  
 diana Hübner 8646  
 Dichomeris 8290, 8296  
 differtellus McDunnough 8485.1  
 dimorphella Busck 8343  
 dircella Braun 9290  
 disconotella Chambers 7805  
 discoocellella Chambers 8051  
 discopunctella Dietz 8572  
 dissectella Zeller 7857  
 distinctellus Dietz 8482  
 diversella Braun 9188?  
 dives Dietz 8500  
 dorsistrigella Clemens 9634  
 dorsomaculella Dietz 8575  
**DOUGLASHIIDAE** 9004  
 drectella Braun 9124.6  
 Dryoperia 8565  
 dubitella Dietz 9335  
 Duospina 7701  
 duplicis Braun 9124  
 Duvita 8255  
 dyariella Busck 8000  
 eboracensis Zeller 8953  
 eclecta Braun 9452.1  
 Ectoedemia 9782  
 Ectoedemia species 9786  
 edithella Busck 8362  
 effrontella Clemens 9587  
 Eido 8390  
 Elachista 9009  
**ELACHISTIDAE** 9009  
 eleanorae Clarke 8404.1  
 eloisella Clemens 7740  
 elotella Busck 9279  
 elyella Dietz 8527  
 Enchrysa 7857  
 Endrosis 8368  
 engelella Busck 7727  
 enitescens Braun 9017  
 Epermenia 7765  
**EPERMENIIDAE** 7765  
 epigaeella Chambers 7965.1  
 Epigraphia 8459  
 Epigritia 8564  
 epilobiella McDunnough 8953.1  
 Epimartyria 9853  
 Epithecis 7923  
 ericoides Braun 9125  
**ERIOCRANIIDAE** 9854  
 erransella Chambers 7720  
 erythriella Clemens 8825  
 estriatella Dietz 8502  
 Ethmia 8622  
**ETHMIIDAE** 8622  
 Euclimensia 8806  
 Eucordylea 7908  
 Eudarcia 9821  
 Eumeyrickia 8390  
 eupatoriella Chambers 8320  
 Euresia 8496  
 Evippe 7867  
 excelsicola Braun 9014.1  
 exitiosa Say 8691  
 explosa Braun 9498  
 Fabiola 8359, 8362  
 fabriciana Linnaeus 8643  
 fagicorticella Chambers 9120.6, 9151  
 fagicosticella Chambers 9151  
 faginella Chambers 8472  
 falciferella Walsingham 884.  
 fasciella Chambers 7943  
 fasciella Chambers 9283  
 fasciella Chambers 9709  
 felicella Walsingham 8826  
 fernaldella Busck 8314  
 fernaldella Walsingham 768  
 fernaldella Walsingham 844  
 festaliella Hübner 8827  
 fidella Dietz 8552  
 fitchella Clemens 9164  
 flavella Ely 9390  
 flavicomella Engel 8420  
 flavimaculella Ely 9355  
 flavipedella Braun ? 9766  
 flavocostella Clemens 8319  
 fletcherella Braun 9252  
 fletcherella Gibson 8470  
 flipria Hodges 8353.1  
 floridanella Beutenmüller 7685.1  
 fluviatella Busck 8106  
 fondella Busck 8013  
 fractilinea Zeller 8489  
 fragilella Frey & Boll 9224  
 fraternella Dietz 8577  
 fraxinella Ely 9398

- freyella* Walsingham 8885  
*frustrella* Walsingham 8845  
*fugitans* Braun 9428.3  
*fugitans* Braun 9463  
*fuliginea* Braun 9041.1  
*fulvipes* Harris 8718  
*fulvisuffusella* Dietz 9689  
*fulvus* Walsingham 8446  
*Fumaria* 9538  
*fumerella* Dietz 8511  
*funebra* Dietz 8520  
*fungivorella* Clemens 7823  
*fuscicola* Braun 9430.1  
*fuscipunctella* Haworth 9643  
*fuscocomaculella* Chambers 8088  
*fuscopunctella* Clemens 7947  
*fuscossuffusella* Dietz 8569  
*fuscotiella* Clemens 9756  
*gallaesterella* Kellicott 8156  
*gallaesolidaginis* Riley 8153  
*gaultheriella* Walsingham 9231  
*gaylussaciella* Heinrich 9073  
*Gelechia* 7960  
**GELECHIIDAE** 7780  
*gelidella* Busck 8451  
*geminatella* Packard 9344  
*gemmea* Frey & Boll 9187  
*gemmaferella* Clemens 7676  
*georgiella* Walker 8303  
*Gerdana* 8465  
*gibbociliella* Clemens 8519  
*gilvolineella* Chambers 7807  
*gilvomaculella* Clemens 8081  
*glandulella* Riley 8488  
*Glauce* 7859  
*glaucicolella* Wood 9120.4  
*Glaucolepis* 9789  
*Glaucolepis* species 9789  
*glissandella* McDunnough 9120.3  
*Glyphidocera* 8342  
**GLYPHIPTERYGIDAE** 8643  
*Glyphipteryx* 8483, 8670  
*gnaphaliella* Kearfott 8662  
*Gnorimoschema* 8151  
*goedartella* Linnaeus 8890  
*goedartella* species near 8890.1  
*gracilis* Grote 9871  
*Gracillaria* 9351  
*Gracillaria* species 9399  
**GRACILLARIIDAE** 9164  
*granella* Linnaeus 9686  
*granella* species near 9686  
*griscella* Chambers 9651  
*griseicornis* Meyrick 9048  
*grisella* Dietz 8568  
*griseocapitella* Walsingham 9854  
*grotella* Robinson 8405  
*grumella* Zeller 9652  
*guttea* Haworth 9330  
*guttifinitella* Clemens 9260  
*haimbachi* Busck 8923  
*hamadryadella* Clemens 9240  
*hamadryadella* species near 9240  
*hamameliella* Busck 9266  
*Harpipteryx* 8845  
*heinrichi* Busck 9786  
*Helice* 7862  
*Helioidines* 8815  
**HELIODINIDAE** 8806  
*Heliozela* 8976  
**HELIOZELIDAE** 8976  
**HEPIALIDAE** 9858  
*Hepialis* Fabricius 9863  
*heraclinana* auct. 8404  
*hermannella* Fabricius 7855  
*heroldella* Hübner 8924  
*hiberna* Braun 9020.1  
*Holcocera* 8500  
*Holcocerina* 8510, 8511, 8512  
*Homosetia* 9703  
*Homosteina* 9694  
*hulstella* Dietz 8478  
*Hyaloscotes* 9533  
*Hybroma* 9697  
*Hypatopa* 8548.1  
*hyperboreus* Moeschler 9863  
*ignota* Frey & Boll 9273  
*illectella* Clemens 9012  
*immaculatella* Chambers 9443  
*immaculella* McDunnough 8510  
*impigritella* Clemens 8670  
*impositella* Zeller 8951  
*incanella* Walsingham 9205  
*incertella* Chambers 8866  
*incertella* species near 8866.1  
*inclusa* Dietz 8529  
**INCURVARIIDAE** 9793  
*inflatella* Clemens 8649.1  
*innocella* Zeller 8280  
*innotata* Walsingham 9346  
*inornata* Walsingham 8460  
*inquilinella* Busck 8054  
*inserrata* Walsingham 8318  
*insignis?* Frey & Boll 9315  
*intermedia* Braun 9726  
*intermediella* McDunnough 9124.5  
*interrupta* Walsingham 8875  
*interstitiella* Dietz 9688  
*inuitata* Braun 9432.2  
*inuitatumella* Chambers 9342  
*irrorata* Braun 9041  
*irrorella* Dietz 9636  
*isabella* Clemens 8984  
*Isocorypha* 9819  
*Isophrictis* 7786  
*juncidella* Clemens 8330  
*juncidella* species near 8330.1  
*juglandiella* Chambers 9365  
*juglandifoliella* Clemens 9747  
*juniperella* Kearfott 7876  
*kalmiella* Dietz 9000  
*kalmiella* Dietz 9331  
*kalmiella* McDunnough 9108.1  
*kearfottella* Barnes & Busck 9075  
*kearfottella* Braun 9181  
*Kearfottia* 9629  
*lactella* Dennis & Schiffermueller 8368  
*lactiflorella* Chamber 8342  
*Lampronia* 9793  
*Lampronia* species near 9793.1  
*lappella* Linnaeus 7780  
*laricella* Hübner 9098  
*laricella* Kearfott 8915  
*laricella* species near 8915.1  
*laticapitella* Clemens 8556  
*latipennis* Walsingham 8380  
*latronella* McDunnough 9120.2

- laurentella* McDunnough 9057.1  
*Laverna* 7762.1  
*lavernela* Chambers 8196  
*ledi* Stainton 9074.2  
*lentella* Braun 9234  
*lentella* Heinrich 9091  
*lepidophaga* Clarke 8522.1  
*lespedezae* Braun 7821  
*lespedezaefoliella* Clemens 9318  
*Leucanthiza* 9290  
*leucochrysa* Clemens 9077  
*leucofrons* Braun 9040  
*Leucogonia* 7928.1  
*Leucogonia* species 7928.1  
*Leucogoniella* 7928.1  
*Leucomela* 9717  
*Leuconota* Zeller 7868  
*leuconotella* Busck 8329  
*Leucospilapteryx* 9294  
*levisella* Fyles 8331  
*ligulella* Hübner 8296  
*Limnaecia* 7744  
*limoripennella* Duponchel 9088  
*lineapulvella* Chambers 9153  
*lineatella* Zeller 8288  
*lingulacella* Clemens 7854  
*linneella* Clerck 7673.1  
*Lita* 8023.1  
*Lithocolletis* 9164  
*Lithocolletis* species 9267.1  
*littorella* McDunnough 9124.7  
*livorella* Zeller 8516  
*longifasciella* Clemens 7951  
*longimaculella* Chambers 8627  
*lucetiella* Clemens 9216  
*lucidella* Busck 8359  
*lucidicostella* Clemens 9172  
*lugubrella* Fabricius 7980  
*luteella* Chambers 9428  
*lynceella* Zeller 8066  
*Lyonetia* 9419  
**LYONETIIDAE** 9413  
*lysimaehiaeella* Chambers 9228  
*lythrella* Walsingham 8437  
*Machimia* 8383  
*macrocarpella* Frey & Boll 9236  
*maculatella* Busck 8407  
*maculatella* Dietz 9710  
*maculimarginella* Chambers 8080  
*maculipennis* Curtis 8878  
*madarella* Clemens 9015  
*magnella* Braun 8994  
*magnella* Chambers 9429  
*magnella* species near 9429.1  
*magophila* Meyrick 7690  
*malifoliella* Clemens 9508  
*maligemmella* Murtfeldt 8518  
*malimalifoliella* Braun 9202  
*malivorella* Riley 9058, 9067  
*maginata* Harris 8684  
*marginella* Fabricius 8299  
*marginimaculella* Chambers 9691  
*marginistrigella* Chambers 9632  
*maritella* McDunnough 9104.1  
*maritimella* McDunnough 8478.1  
*maritimella* McDunnough 9025.1  
**Marmara** 9275  
*marmorella* Chambers 9684  
*martiella* Braun 9185  
*martini* Freeman 7907.1  
*Martyringa* 8380  
*Mathildana* 8353  
**Mea** 9699  
*media* Braun 8917  
*mediofuscella* Clemens 8020  
*mediostriatella* Clemens 9819  
*megamicrella* Dyar 8461  
*melanella* Murtfeldt 8603  
*melanostriatella* Dietz 8546  
*melanotella* Dietz 9343  
**Menesta** 8602  
*messelinella* Dietz 8531  
*Metzneria* 7780  
*meyrickella* Busck 8344  
**MICROPTERYGIDAE** 9856  
*minimella* Chambers 7811.1  
*minimella* Ely 9351  
*minorella* Dietz 8511  
*miramella* Dietz 9717  
*misceristatella* Chambers 9711  
**Mnemonic** 9854  
*modestella* Clemens 8508  
*molybdanella* Dietz 9674  
*molybdanella* species near 9674  
*molybdina* Hodges 7687.1  
**Mompha** 7746  
*monachella* Hübner 9633  
**Monopis** 9630  
*montana* Braun 9431  
*montella* species near 8905.1  
*montisella* Chambers 7686  
*morus* Grote 9585  
*multicristatella* McDunnough 9078.1  
*multistriatella* Dietz 9673  
*murtfeldtella* Chambers 7757  
*murtfeldtella* Chambers 8570  
*mustelinus* Packard 9870  
*nannella* Dennis & Schiffermuller 7898  
**Nannodia** 7853.1  
*nebulosa* Zeller 8452  
*needhami* Braun 9439.1  
*negligens* Braun 8995  
*negundella* Chambers 9374  
*negundella* species near 9374.1  
*nemorella* McDunnough 9124.4  
*memoris* Walsingham 9232  
**Nepticulidae** 9719.1  
**NEPTICULIDAE** 9719.1  
**Neurobathra** 9306  
*newmanella* Clemens 8353  
*new species* 8105.2  
*new species ?* 8963.1  
*nigra* Busck 7901  
*nigra* Hodges 7918.1  
*nigratomella* Clemens 8258  
*nigrimaculella* Busck 8078  
*nigrinotella* Busck 8444  
*nigritus* Hodges 7901  
*nigriverticella* Chambers 9774  
*nigroatomella* Dietz 9693  
**Nites** 8405, 8406, 8406.1, 8407  
*nivealla* Chambers 9432  
*niveopulvella* Chambers 8272  
*nonstrigella* Busck 8273  
*nuella* Walsingham 8525  
**Numata** 7858

- nyssaeoliella Chambers 9752  
 nyssaeoliella Clemens 8985  
 obliquistrigella Chambers 7875  
 oblitterella Dietz 9341  
 obruptella Zeller 9782  
 Obrussa 9788  
 obscurella Dietz 8563  
 obscurella Dietz 9706  
 obscurella Kearfott 7892.1  
 obscuricostella Clemens 9177  
 obscurofasciella Chambers 9004  
 obscurostrigella Chambers 9642  
 obscurusella Chambers 8077.1  
 obsoleteella Zeller 8471  
 obstructella Clemens 9261  
 occidentella Dietz 8565  
 ochreella Clemens 8573  
 ochrefasciella Chambers 9788  
 ochreostrigella Chambers 8045  
 ochreosuffusella Chambers 8043  
 ochritincta Braun 9432.1  
 ochrocephala Dietz 8506  
 ochrocomella Clemens 8564  
 Ocnorostoma 8926  
 OECOPHORIDAE 8353, 8582, 8622  
 Oegoconia 8332  
 olivaeformis Braun 9183  
 Onebala 8284  
 ontariensis Keifer 7958  
 onustana Walker 8663  
 operculella Zeller 8214  
 ophrionella Dietz 9666  
 Opostega 9402  
 OPOSTEGIDAE 9402  
 oressella Clemens 8893  
 orestella Busck 9009  
 ostensackenella Fitch 9218  
 ostryae Clemens 9086  
 ostryaeella Chambers 7706  
 ostryaeoliella Clemens 8996  
 ostryaeoliella Clemens 9178  
 ostryaeoliella Clemens 9738  
 ostryarella Chambers 9264  
 ostryella McDunnough 8406.1  
 oxytypa Braun 9041.2  
 packardella Chambers 9369  
 packardella Chambers 9439  
 packardella Clemens 8459  
 pallida Braun 9777  
 palliderosacella Chambers 7938  
 pallidula Braun ? 9449.1  
 palpilineella Chambers 8248  
 paludoides McDunnough 9088.1  
 Paraclemensia 9817  
 paradox Frey & Boll 9397  
 Paralechia 7913  
 Paraleucoptera 9413  
 Parathrene 8792  
 Paractopa 9318  
 Parharmonia 8763  
 paroptyla Braun 9428.2  
 Parornix 9330  
 parvipulvella Chambers 9020  
 passerella Busck 7739  
 pastinacella Duponchel 8404  
 patriodoxa Meyrick 9045  
 paulella species near 7991  
 pectenalaella Chambers 7859  
 pelliionella Linnaeus 9653  
 pennella Busck 7786  
 pennsylvaniella Engel 9320  
 pennsylvaniella var. 9320  
 Perimede 7720  
 Periploca 7918.1  
 persicaella Murtfeldt 8105  
 persimplexella McDunnough 9073.1  
 petrella Busck 8160  
 Philonome 9425  
 phragmitella Stainton 7744  
 Phthorimaea 8211  
 Phyllocnistis 9307  
 Phyllocnistis species 9307.1  
 Phyllonorycter 9164  
 physaliella Chambers 7815  
 piceae Dyar 8764  
 piceaella Kearfott 7892  
 pictipes Grote & Robinson 8720  
 picturatella Braun 9257  
 Pigitia 8553  
 pilosella Zeller 8963  
 pini Kellicott 8763  
 pinariella Zeller 8926  
 pinifoliella Chambers 7913  
 pithopoera Dyar 9533  
 plagiataella Dietz 8515  
 plantaginisella Chambers 9321  
 Platyedra 8333.1  
 pleophaga Busck 9785  
 Ploioiphora 8548.2  
 plumifrontellus Clemens 9556  
 plummerella Dietz 8480  
 Plutella 8870  
 PLUTELLIDAE 8842  
 Podosesia 8768  
 polemoniella Braun 9126  
 Polix 8367  
 pomifoliella Clemens 9448  
 pomivorella Packard 9764  
 pomonella Busck 9284  
 populella Busck 9783  
 populiella Chambers 9206  
 populiella Chambers 9308  
 populetorum Frey & Boll 9775  
 Porphyrosela Braun 9268  
 porrectella 8870  
 praeangusta Haworth 7696  
 praefixa Braun 7949  
 praematurella Clemens 9021  
 Prochoreutis 8649.1  
 Proleucoptera 9414  
 propinquinella Braun 9204  
 proxima Henry Edwards 8723  
 prudens Clemens 7917  
 pruniella Clemens 9102  
 prunifoliella Chambers 7867  
 pruniramiella Clemens 9626  
 Psacaphora 7727  
 pseudoacaciella Chambers 8084  
 Pseudopigritia 8575  
 Psilocorsis 8467  
 psilopterus Barnes & Busck 8104  
 PSYCHIDAE 9533  
 Ptycerata 7800  
 puberuloides McDunnough 9080.2  
 pudibundella Zeller 7827  
 pulchella Dietz 8496

- pulcherrimella Chambers  
 7674  
 pulchrimella Chambers 7674  
 pullusella Chambers 7811  
 pulvipennella Clemens 8440  
 punctella Cramer 8939  
 punctidiscella Clemens  
 8304  
 punctiferella Clemens 8540  
 punctipennella Clemens 8305  
 purpurascens Packard 9859  
 purpuratella Braun 9735  
 purpurea Walker 9844  
 purpurella Dietz 8554  
 purpureofusca Walsingham  
 8285.1  
 purpuriella Chambers 9375.1  
 purpurocomella Clemens  
 8505  
 pusilla Dietz 8544  
 pygmaeella Hübner 8891  
 pyramidalis Walker 8789  
 pyri Harris 8729  
 quadriguttatus Grote  
 9860  
 quadrilineella Chambers  
 9121  
 quadrimaculella Chambers  
 8365  
 quadrinotata Braun 9722  
 quadripuncta Haworth 8332  
 quadripunctella Clemens  
 9345  
 quadristrigella Chambers  
 9404  
 quadristrigella Zeller 8879  
 quadruplex McDunnough  
 9153.1  
 quaintancella Dietz 8490  
 quercicella Clemens 8473  
 querciella Chambers 7942  
 quercicella Clemens 9062  
 quercinigracella Chambers  
 7941  
 quercinigrella Ely 9384  
 quercipulchrella Chambers  
 9745  
 quercivorella Chambers 7896  
 quercivorella Chambers 9246  
 quinella Zeller 7972  
 quinquenotella Chambers  
 9445  
 quinquepunctella Busck  
 7817  
 radiantella Braun 9033  
 recognita Braun 9428.1  
 Recurvaria 7875  
 reflexella Clemens 8467,  
 8470  
 repartella Dietz 8495  
 resinosae Freeman 7896.1  
 resplendensella Chambers  
 9733  
 restrictella Braun 9203.1  
 rhododendri Beutenmüller  
 8730  
 rhoifoliella Braun 9730  
 rhoifoliella Chambers 9379  
 rhoifruetella Clemens 8269  
 ridingsella Clemens 9839  
 rileyella Busck 8907  
 rileyella Chambers 8057  
 rileyella Chambers 9180  
 rileyi Dietz 9672  
 robiniella Clemens 9191  
 robiniella Clemens 9319  
 robiniella Fitch 7877  
 robiniella Packard 8448  
 rosacella Clemens 9080  
 rosaefoliella Clemens 9057  
 rosaefoliella Clemens 9754  
 roseosuffusella Clemens  
 7834  
 rubidella Clemens 7818  
 rubiella Bjerkander 9794.1  
 rubifoliella Clemens 9750  
 rugosae McDunnough 9124.1  
 ruprestrella McDunnough  
 9074.1  
 russatella Clemens 9793  
 russatella species near  
 9793.1  
 rusticella Hübner 9630  
 saccharella Braun 9235  
 saccharella Braun 9789  
 sacramento Heinrich 9064  
 saginella Clemens ? 9776  
 sagitella Dietz 8481  
 saliciella Busck 9420  
 salicifoliella Chambers  
 9225  
 salicipomonella Clemens  
 7700  
 salicivorella Braun 9197  
 salicivorella McDunnough  
 9108.2  
 salictella Clemens 9275  
 salinaris Busck 8154  
 salinoidella McDunnough  
 9124.8  
 salmani Heinrich 9097  
 salutataria Braun 9460  
 sanguinella Beutenmüller  
 9391.3  
 Sanninoidea 8691  
 sarcitrella Linnaeus 8368  
 sassafrasella Chambers 9380  
 Scardia 9615  
 Schiffermulleria 8359  
 schlaegeri Zeller 8582  
 Schreckensteinia 8825  
 sciadopa Meyrick 8434  
 scitula Harris 8731  
 scudderella Frey & Boll 9195  
 scutellariaeella Chambers  
 8195  
 SCYTHRIDAE 8950  
 Scythris 8950  
 semilugens Zeller 8622  
 Semioscopis 8459, 8460  
 Septea 8341  
 septentrionella Busck 8345  
 septentrionella Fyles 8151  
 sequax Haworth 7945  
 seriocopeza Zeller 9719.1  
 serotinella Busck 8082  
 serotinella Busck 9276  
 serotinella Ely 9395  
 serratella Linnaeus 9099.1  
 serrativittella Zeller 8315  
 servulella Clemens 9697  
 Sesia 8690  
 SESIIDAE 8684  
 setosella Clemens 8320,  
 8322  
 sexdentatella McDunnough  
 9120.1  
 sexguttella  
 race naeviferella Duponche  
 7853.1  
 sexnotata Braun 9451  
 sexnotella Chambers 7716  
 sexpunctella Fabricius 8023  
 shaleriella Chambers 9150  
 sigmoidea Beutenmüller 871  
 similella Braun ? 9762  
 similiella Chambers 7794

- similis* Hodges 7743.2  
*simpliciella* Busck 8317  
*simulans* Grote 8798  
*simulatricella* Clemens 9821  
*skinnerella* Dietz 9699  
*slingerlandella* Kearfott 9753  
*smilaciella* Busck 9414  
*Solenobia* 9539  
*solidaginella* Braun 9430.1  
*solidaginifoliella* Clemens 9496  
*solidaginis* Frey & Boll 9271  
*somnulentella* Zeller 9423  
*species* 7701.1  
*species* 7750.2  
*species* 7750.3  
*species* 8463.1  
*species* 8548.2  
*species* 8670.1  
*species* 8897.1  
*species* 8967.1  
*species* 9166.1  
*species* 9267.1  
*species* 9406.1  
*species* 9587.1  
*species* 9633.1  
*species* 9652.1  
*speculella* Clemens 9419  
*speratella* Busck 8345  
*spilotella* Tengström 9631  
*spissicornis* Haworth 9104.2  
*splendoriferella* Clemens 8998  
*spoliatella* Dietz 8531  
*spoliatella* Dietz 8562  
*Stagmatopthera* 7716  
*stellella* Busck 7749  
*Stenoma* 8582  
**STENOMIDAE** 8582  
*Stereomita* 7799  
*Sthenopis* 9858  
*stigmatella* Fabricius 9375  
*Stilbosis* 7741  
*Stomopteryx* 8248  
*striatella* Murtfeldt 8211  
*strictella* Walker 9392  
*strigifinitella* Clemens 9306  
*strigosus* Braun 9301  
*strobivorella* Dietz 9339  
*strobivorum* Freeman 8926.1  
*subbistrigella* Haworth 7757.1  
*subcinerea* 8333.1  
*sublustris* Braun 9803  
*subreticulata* Walsingham 8898  
*subsenella* Zeller 8540  
*superbifrontella* Clemens 9372  
*Swammerdamia* 8924  
*sylvestris* Braun 9039  
*sylvicolella* Busck 7924  
*symphoricarpella* Frey & Boll 9217  
*Synanthedon* 8691, 8697  
*Syncopacma* 8248  
*syringae* Harris 8768  
*syringella* Fabricius 9398.1  
*tahavusella* Forbes 8259  
*tanyopis* Meyrick 9047  
*tartarella* Dietz 8543  
*taylorella* Kearfott 9794  
*Tebenna* 8662, 8663  
*Telephila* 8290  
*Telphusa* 7932  
*tenebrella* Dietz 8566  
*tentoriferella* Clemens 8383  
*tephriasella* Chambers 8279.1  
*terminella* Westwood 7727  
*terminimaculella* Kearfott 8014  
*tesquella* Clemens 7741  
*texanella* Walsingham 8540  
*Theiso* 7862  
*thelmae* Clarke 8448.1  
*Thelyasceta* 8285.1  
*thoracealbella* Chambers 7968  
*thoracealbella* Chambers 9763  
*thoraceochrella* Chambers 8078  
*thoraceocrella* Chambers 8085  
*thoracestrigella* Chambers ? 9660  
*thuiella* Packard 8914  
*tibialis* Harris 8690  
*tiliacella* Chambers 9222  
*tiliaefoliella* Clemens 9056  
*Tinagma* 9002  
*tinctoriella* Chambers 9494  
*Tinea* 9641  
**TINEIDAE** 9586, 9819, 9821  
*Tineola* 9695  
*tipuliformis* Linnaeus 8708  
*Tischeria* 9483  
**TISCHERIIDAE** 9483  
*titanelia* McDunnough 8548.1  
*tortriciformella* Clemens 8602  
*Trachoma* 8842  
*transversata* Braun 9467  
*trémuloidiella* Braun 9226  
*trialbamaculella* Chambers 7965  
*trichella* Busck 7701  
*Trichotaphe* 8284, 8313, 8318  
*tricincta* Harris 8792  
*tricrostatella* Chambers 7738  
*trifasciella* Clemens 9440  
*trifolii* Curtis 9104.3  
*trimaculella* Chambers 8313  
*trimaculella* Chambers 9649  
*trimaculella* Fitch 8390  
*trinitata* Braun 9723  
*trinitella* Braun 9167  
*trinitella* Busck 8328  
*triocellella* Chambers 8182  
*triplicis* McDunnough 9080.1  
*tripunctella* Walsingham 8818  
*tritaenianella* Chambers 9219  
*trivinctella* Zeller 8967  
*Trypanisma* 7917  
*tubiferella* Clemens 9267  
*tylodes* Meyrick 9679  
*ulmella* Braun 9758  
*ulmella* Chambers 9245  
*undulatella* Chambers 8912  
*unifasciella* Chambers 7758  
*unifasciella* Chambers 9036  
*unifasciella* Chambers 9734  
*unipunctella* Clemens 8584  
*ursella* Walsingham 8539  
*vacciniella* Busck 8290  
*vacciniella* Ely 9357  
*Valentinia* 8448  
*variabilis* Busck 8032  
*velatella* Clemens 9702  
*ventrella* Fitch 8298  
*venustella* Clemens 9294  
*vernoniacella* Chambers 9111  
*versicolorella* Kearfott 7856  
*versutella* Zeller 8065  
*vesaliella* Chambers 9640

vestaliella Dietz 8542	viticordifoliella Clemens 8986	wyattella Barnes & Busck 7717
viburniella Clemens 9078	vitigenella Clemens 9310	Xenolechia 7958
vicarialis Zeller 8645	vittella Busck 8255	Xylesthia 9626
vicinella Dietz 9338	walshella Clemens 9539	xylostella Linnaeus 8846
viduella Fabricius 7977	Walshia 7743.2	YPONOMEUTIDAE 8879
vilella Zeller 8333.1	walsinghami Dietz 8021	Zelleria 8923
villella Busck 7673	walsinghamiella Busck 8443	zelleriella Chambers 8629
villella Busck 8483	washingtoniella Busck 8325	zelleriella Clemens 9512
violacella Clemens 9367	winnella Busck 8967.2	Zenodochium 8486-8487?
virgella Thunberg 8023.1		
virginiella Clemens 8649.1		

**Families of the Order Lepidoptera  
covered in each section  
of the Maine List.**

**Tech. Bulletin 66**

Agaristidae  
Amatidae  
Arctiidae  
Citheroniidae  
Danaiidae  
Drepanidae  
Epiplemidae  
Geometridae  
Hesperiidae  
Lacosomidae  
Lasiocampidae  
Libytheidae  
Liparidae  
Lycaenidae  
Noctuidae  
Nolidae  
Notodontidae  
Nymphalidae  
Papilionidae  
Phalaenidae  
Pieridae  
Saturnidae  
Satyridae  
Sphingidae  
Thyatiridae  
Zanolidae

**Tech. Bulletin 109**

Agapetiidae  
Carposinidae  
Cossidae  
Limacodidae  
Megalopygidae  
Olethreutidae  
Phaloniidae  
Pterophoridae  
Pyrilidae  
Thyrididae  
Tortricidae  
Zygaenidae

**Tech. Bulletin 114**

Adelidae  
Aegeriidae (Sesiidae)  
Agrolophidae  
Blastobasidae  
Coleophoridae  
Cosmopterigidae  
Douglassiidae  
Elachistidae  
Epermeniidae  
Eriocraniidae  
Ethmidae  
Gelechiidae  
Glyphiterigidae  
Gracilariidae  
Heliodinidae  
Heliozelidae  
Hepialidae  
Incurvariidae  
Lyonetiidae  
Micropterygidae  
Nepticulidae  
Oecophoridae  
Opostegidae  
Plutellidae  
Psychidae  
Scythridae  
Stenomidae  
Tineidae  
Tischeriidae  
Yponomeutidae  
(Argyresthiidae)



## Additions and Corrections to Parts 1 and 2 of this Maine List

A survey of records shows that the Lepidoptera population of Maine is not a static one. The earliest butterfly workers recorded a number of species in Maine and New Hampshire of which recent records are lacking. In 1933 I recorded on Mount Desert Island the northern *Plebeius saepiolus* and *Hesperia comma laurentina*. For a number of years there were large numbers of *Lycaena dorcas claytoni* in the Lee-Springfield area.

### McDunnough list numbers

- 109 **Caenonympha inornata** Edwards In 1977 in numbers in southern N.H.; Kennebunk numerous in 1980; Weld common in 1983; Smithfield a few in 1983, and one in Augusta 1983
- 387.1 **Incisalia caryaevorus** McDunnough Many in Gattineau Co., Que.
- 412 **Incisalia eryphon** Boisduval Near Wilsons Mills in a spruce area 1975
- 496 **Achalarus lycidas** Smith Milford, N.H. by Whitney
- 550 **Erynnis martialis** Scudder Manchester, N.H. Fairly common June 2
- 572 **Thymelicus lineola** Ochsenheimer Abundant 1980 at St. Agatha
- 609 **Polites verna** Edwards Walpole, N.H. by S.I. Smith
- 623 **Poanes massasoit** Scudder Milo, N.H.
- 772 **Pholus satellita pandorus** Hübner A number in the Biddeford-Portland area the first years of this century by Winn, Lyman and Fernald
- 2297.1 **Metaxaglaea semitaria** Franclemont Hampton, N.H.
- 2476 **Hydroecia stramentosa** Guenée Montreal, Que. Food *Gerardia*
- 2653.1 **Caradrina morpheus** Hufnagel Buffalo (Portage), 21 July 1974 ♂; T9R5 16 July, 1973 ♂, 21 July 1974 ♂ An introduction from Europe.
- 2966 **Schinia trifascia** Hübner Lee, N.H., 29 July 1974 ♀
- 3228 **Paectes pygmaea** Hübner Lee, N.H., 25 June ♀
- \*3256 **Autographa excelsa excelsana** Strand Type locality N.H.
- \*3257.1 **Autographa abstrusa** Eichlin Recorded for Maine and New Hampshire
- \*3257.2 **Autographa cryptica** Eichlin Recorded for N.H.
- \*3266.1 **Autographa viridisigma** Grote Has been mixed with *A. selecta* Walker. It has been found to be much the commoner of the two.
- 3313 **Catocala consors sorsconi** Barnes and Benjamin Evidently all Maine labels of this species are spurious.
- 3325 **Catocala obscura** Strecker Lee, N.H., 23 August 1973
- 3387 **Catocala andromedae** Guenée Hampton, Durham, and Lee, N.H. 26 July to 30 August
- 3639 **Phiprosopus callitrichoides** Grote N.H. on *Smilax*
- 4650 **Episemasia morbosa** Hulst T/Ré DeBoulie Mt., 15 July ♂
- 4979 **Stenotrachelys permagnaria** Packard Kennebunk by W.B. Clark
- 6752.2 **Rhyacionia aktita** Miller Emerged March ex tips *Pinus rigida*
- 6756 **Petrova mafica** Miller Emerged June. Feeds on *Pinus banksiana*
- 7456 **Tortricodes fragariana** Forbes Should be **Decodes basiplaganus** Walsingham fide Obraztsov
- 7624.1 **Bondia fidelis** Meyrick Whitefield, N.H., 21 April 1976 W.J. Kiel

\*Eichlin, T.D. and H.B. Cunningham. *The Plusiinae (Lep.: Noctuidae) of America north of Mexico, emphasizing genitalic and larval morphology*. U.S. Dept. of Agriculture Tech. Bull. 1567, 122 pp., March 1978.

### Literature Cited

- Braun, Annette F. 1980. "Revision of the North American species of the Genus *Lithocolletis* Hübner," *Trans. Am. Ent. Soc.* 34:269-357.
- \_\_\_\_\_. 1917. "Nepticulidae of North America," *Trans. Am. Ent. Soc.* 43:155-209.
- \_\_\_\_\_. 1923. *Lithocolletis* in Forbes, "The Lepidoptera of New York and Neighboring States," Cornell Univ. Agric. Exp. Sta. Mem. 68.
- \_\_\_\_\_. 1948. "Elachistidae of North America," *Mem. Am. Ent. Soc.* 13:1-110.
- \_\_\_\_\_. 1963. "Genus *Bucculatrix* in America north of Mexico," *Mem. Am. Ent. Soc.* No. 18.
- Davis, Donald R. 1978. "A Revision of the North American moths of the superfamily Eriocranioidea with the proposal of a new family, Acanthopteroctetidae (Lep.)," *Smithsonian Contr. Zool.* No. 251:1-104.
- Forbes, W.T.M. 1923. "The Lepidoptera of New York and Neighboring States," Cornell Univ. Mem. 68.
- Freeman, Tom. 1958. "The Archipinae of North America," (Lep. Tortricidae, Supp. 7 to Can. Ent.)
- \_\_\_\_\_. 1967. "On Coniferous species of *Choristoneura* (Lep. Tortricidae) in North America," *Can. Ent.* 99:449-455.
- Heinrich, Carl. 1923. "Revision of the North American Moths of the subfamily Eucosminae of the family Olethreutidae," U.S.N.M. Bul. 123, Washington, D.C.
- \_\_\_\_\_. 1926. "Revision of the North American Moths of the subfamilies Laspeyresinae and Olethreutinae," U.S.N.M. Bul. 207, Washington, D.C.
- \_\_\_\_\_. 1956. "American Moths of the subfamily Phycitinae," U.S.N.M. Bul. 207; I-581, Washington, D.C.
- Hodges, Ronald W. 1984. "Moths of America North of Mexico," Fascicle 6.2 Gelechioidea Oecophoridae, E.W. Classey Ltd. & R.B.D. Publ. Inc.
- \_\_\_\_\_. 1978. "Moths of America North of Mexico," Fascicle 6.1 Gelechioidea Cosmopterigidea, E.W. Classey Ltd. & Wedge Ent. Res. Found.
- Hodges and others. 1983. "Check List of the Lepidoptera of America North of Mexico." E.W. Classey Ltd. & Wedge Ent. Res. Found.
- McDunnough, James H. 1939. "Check List of the Lepidoptera of Canada and the United States of America, Part II Microlepidoptera," *Mem. So. Calif. Acad. Sci.* 2(1).
- Munroe, Eugene. 1972. "Moths of America North of Mexico Pyraloidea Pyralidae," Fascicle 13.1A
- \_\_\_\_\_. 1972. *op. cit.* Fascicle 13.1B.
- \_\_\_\_\_. 1973. (1974) *op. cit.* Fascicle 13.1C. E.W. Classey Ltd. & R.B.D. Pub. Inc.
- \_\_\_\_\_. 1976. *op. cit.* Fascicle 13.2A.
- \_\_\_\_\_. 1976. *op. cit.* Fascicle 13.2B. E.W. Classey Ltd. & Wedge Ent. Res. Found.
- Shaffer, Jay C. 1968. "A Revision of the Peoriinae and Anerastiinae (auct) of America north of Mexico (Lep. Pyralidae)," *Smithsonian Institution, U.S.N.M. Bul.* 280.