

EXHIBIT & EVENT AV / HOSPITALITY DISPLAY PRODUCTS

2024 PRICE GUIDE

CODE
R



TABLE OF CONTENTS

EXHIBITS & EVENTS

Throw Covers	4
Stretch Covers	6
CrissCross Covers	6
Table Runners	7
Tabletop Displays	7
Table Skirting	8
Backdrops	9
Counters	10
Literature Stands	10
Director Chairs	11
Banner Stands	12
Backwalls	14
Xpress Shelf	14
RasterPrint Portable Graphics System	15
LUMA II	16
Tents & Flags	18
Hanging Banners	18

AUDIO / VISUAL

Pipe & Drape	20
Pipe & Drape 2.0	21
Drapes	22
DrapeScape	23
Screen Dress Kits	23
A/V Accessory Covers	24
Catchbox Covers	25
Stage Skirting	26

HOSPITALITY

Table Skirting	28
Clips	28
Round Throw Covers	29
Napkins & Tablecloths	30
Hospitality Accessory Covers	30

Cases & Bags	31
Ordering Information	32
Artwork Requirements	32
Imprint Options	33
Fabric Types	34
Fabric & XpressScan Colors	35



EXHIBIT & EVENT

DISPLAY PRODUCTS

**NEW
ARRIVAL**

ULTRALITE

MODULAR DISPLAY SYSTEM



Size	Hardware	Graphic
3' x 8' H	\$288	\$324
4' x 8' H	\$309	\$420
5' x 8' H	\$417	\$534
8' x 8' H	\$741	\$840
10' x 8' H	\$831	\$1,050

Single or Double Sided. Graphic price per side.
Call for more information.

THROW COVERS



Unprinted Throw Cover

Full	Twill	Luster	Satin	Cameo	Pleated or Fitted
6' x 30"H (86"x128")	\$123	\$102	\$102	\$169	+\$31
6' x 42"H (110"x152")	\$252	\$209	\$209	\$316	+\$31
8' x 30"H (86"x152")	\$139	\$116	\$116	\$193	+\$31
8' x 42"H (110"x176")	\$285	\$238	\$238	\$355	+\$31
8'-6' Adjustable (30"h)	\$196	N/A	N/A	N/A	N/A
Economy					
6' x 30"H (64"x128")	\$85	\$70	\$70	\$124	+\$31
6' x 42"H (84"x152")	\$136	\$142	\$142	\$221	+\$31
8' x 30"H (64"x152")	\$97	\$79	\$79	\$157	+\$31
8' x 42"H (84"x176")	\$173	\$143	\$143	\$279	+\$31
Round					
24" x 42"H	\$144	\$121	\$121	\$198	+\$31
30" x 42"H	\$147	N/A	N/A	N/A	+\$31
36" x 42"H	\$154	\$130	\$130	\$218	+\$31

Printed Round Throw Covers available. Call for details and pricing.



RasterPrint™ Throw Cover

Front Only	Regular Ht.	Counter Ht. (40")	Pleated or Fitted
6' Economy	\$300	\$430	+\$31
6' Full	\$338	\$546	+\$31
8' Economy	\$383	\$565	+\$31
8' Full	\$425	\$677	+\$31
8' to 6' Adjustable	\$482		
Full Print			
6' Economy	\$325	\$507	+\$31
6' Full	\$439	\$667	+\$31
8' Economy	\$387	\$587	+\$31
8' Full	\$518	\$769	+\$31
8' to 6' Adjustable	\$560		

RasterPrint is a full color, dye sublimation process used to print photographic or vector images. Pricing is based on quantity of 1-4, call for price breaks.

BULK RasterPrint™ Throw Cover

Qty	6' Economy	6' Full	8' Economy	8' Full
1	\$237	\$263	\$252	\$280
5	\$187	\$227	\$216	\$262
10	\$172	\$217	\$208	\$252
25	\$145	\$207	\$199	\$243
50	\$141	\$174	\$169	\$207
100	\$136	\$168	\$162	\$199
200	\$126	\$151	\$146	\$179
500	\$121	\$150	\$145	\$178
1000	\$117	\$145	\$140	\$171

Corner & Finish Styles

Radius Corners



Pleated



Fitted



Economy



Adjustable



The industry standard for nearly **50** years!



Screen Print Throw Cover

One Color	1	2	3-6	7-12	Counter Ht. (40")	Pleated or Fitted
6' Economy	\$315	\$239	\$193	\$161	+\$51	+\$31
6' Full	\$353	\$277	\$231	\$199	+\$127	+\$31
8' Economy	\$327	\$251	\$205	\$173	+\$76	+\$31
8' Full	\$369	\$293	\$247	\$215	+\$146	+\$31
8' to 6' Adjustable	\$426	\$350	\$304	\$272	+\$146	+\$31
Two Color						
6' Economy	\$473	\$345	\$267	\$213	+\$51	+\$31
6' Full	\$511	\$383	\$305	\$251	+\$127	+\$31
8' Economy	\$485	\$357	\$279	\$225	+\$76	+\$31
8' Full	\$527	\$399	\$321	\$267	+\$146	+\$31
8' to 6' Adjustable	\$584	\$456	\$378	\$324	+\$146	+\$31

Imprint Size: 42"W x 18"H.

XpressScan® Throw Cover

One Color	1	2	3-6	7-30	Counter Ht. (40")	Pleated or Fitted
6' Economy	\$250	\$214	\$184	\$166	+\$51	+\$31
6' Full	\$288	\$252	\$222	\$204	+\$127	+\$31
8' Economy	\$262	\$226	\$196	\$178	+\$76	+\$31
8' Full	\$304	\$268	\$238	\$220	+\$146	+\$31
8' to 6' Adjustable	\$361	\$325	\$295	\$277	+\$146	+\$31
Two Color						
6' Economy	\$344	\$308	\$258	\$235	+\$51	+\$31
6' Full	\$382	\$346	\$296	\$273	+\$127	+\$31
8' Economy	\$356	\$320	\$270	\$247	+\$76	+\$31
8' Full	\$398	\$362	\$312	\$289	+\$146	+\$31
8' to 6' Adjustable	\$455	\$419	\$369	\$346	+\$146	+\$31

Imprint Size: 42"W x 13"H.

See page 35 for available fabric colors



Repels dirt, oil, water, bleach and grease!



DURA™ Screen Print Throw Cover

One Color	1	2	3-6	7-30	Counter Ht. (40")	Pleated or Fitted
6' Economy	\$250	\$214	\$184	\$166	+\$51	+\$31
6' Full	\$288	\$252	\$222	\$204	+\$127	+\$31
8' Economy	\$262	\$226	\$196	\$178	+\$76	+\$31
8' Full	\$304	\$268	\$238	\$220	+\$146	+\$31
8'-6' Adjustable	\$361	\$325	\$295	\$277	+\$146	N/A

Imprint Size: 42"W x 18"H.

4 Color Options. See page 34



DURA™ Unprinted Throw Cover

	Regular Ht.	Counter Ht. (40")	Pleated or Fitted
6' Economy	\$85	+\$51	+\$31
6' Full	\$91	+\$127	+\$31
8' Economy	\$97	+\$76	+\$31
8' Full	\$103	+\$146	+\$31
8'-6' Adjustable	\$145	+\$146	N/A

STRETCH COVERS



Unprinted Stretch Cover

Full or Economy	
6' x 30"h	\$138
6' x 42"h	\$178
8' x 30"h	\$162
8' x 42"h	\$200
Serpentine	
6' x 30"h	\$184
8' x 30"h	\$197
Round	
48" Round x 30"h	\$130
60" Round x 30"h	\$147
72" Round x 30"h	\$187
30" Round x 42"h	\$86
36" Round x 42"h	\$98

See page 35 for available stretch fabric colors



RasterPrint™ Stretch Cover

Full or Economy	Front Only	Full Print
6' x 30"h	\$353	\$515
8' x 30"h	\$448	\$633
Counter		
6' x 42"h	\$472	\$674
8' x 42"h	\$592	\$821
Round		
30" Round x 42"h	N/A	\$337
36" Round x 42"h	N/A	\$383

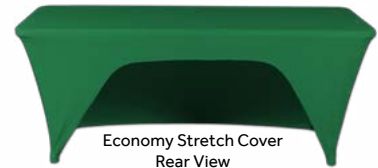
Please specify table leg style, and distance between legs when ordering Stretch Covers



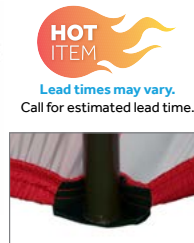
Screen Print Stretch Cover

One Color	1	2	3-6	7-12	Counter Ht. (40")
6' Economy	\$368	\$292	\$246	\$214	+\$40
6' Full	\$368	\$292	\$246	\$214	+\$40
8' Economy	\$392	\$316	\$270	\$238	+\$38
8' Full	\$392	\$316	\$270	\$238	+\$38
Two Color					
6' Economy	\$526	\$398	\$320	\$266	+\$40
6' Full	\$526	\$398	\$320	\$266	+\$40
8' Economy	\$550	\$422	\$344	\$290	+\$38
8' Full	\$550	\$422	\$344	\$290	+\$38

Imprint Size: 42"W x 18"H.



Super Stretch Cover



CRISSX CROSS™

Reversible Dual-Layer Stretch Cover



CrissCross™ Cover

	Unprinted	Price Per 1/2 Cover	Price Per Full Cover
72" x 30" x 30"H		\$114	\$228
96" x 30" x 30"H		\$132	\$264
RasterPrint™			
72" x 30" x 30"H		\$345	\$690
96" x 30" x 30"H		\$513	\$1026
Super Stretch			
72" x 30" x 30"H		N/A	\$312
96" x 30" x 30"H		N/A	\$366

Purchase 2 to make a complete CrissCross Cover. Call for XpressScan or Screen Printing prices.

Qty	6' Economy	6' Full	8' Economy	8' Full
1	\$248	\$248	\$267	\$267
5	\$194	\$198	\$230	\$234
10	\$183	\$186	\$222	\$227
25	\$167	\$171	\$214	\$219
50	\$166	\$169	\$200	\$203
100	\$140	\$143	\$169	\$172
250	\$137	\$139	\$161	\$164
500	\$130	\$132	\$157	\$160
1000	\$128	\$130	\$154	\$157

Lighter weight fabric than our traditional Stretch Cover. Super elastic fabric fits virtually any table leg style. Fit may vary with table. Fully dye-sub printed and flame retardant. Silicone leg cups hold cover secure.

Prices, turnaround times and availability are subject to change at any time. Please review pricing disclaimer on Page 32 before quoting prices.

TABLE RUNNERS



RasterPrint™ Table Runner

Full Print	1-24
24"W x 66"H	\$110
30"W x 66"H	\$139
72"W x 66"H	\$333



Rear View



Screen Print Table Runner

One Color	Imprint Size	1	2	3-6
24"W x 66"H	22"W x 18"H	\$270	\$194	\$148
30"W x 66"H	28"W x 18"H	\$270	\$194	\$148
48"W x 66"H	42"W x 18"H	\$285	\$209	\$163
Two Color				
24"W x 66"H	22"W x 18"H	\$428	\$300	\$222
30"W x 66"H	28"W x 18"H	\$428	\$300	\$222
48"W x 66"H	42"W x 18"H	\$443	\$315	\$237



XpressScan® Table Runner

One Color	Imprint Size	1	2	3-6
24"W x 66"H	22"W x 13"H	\$163	\$127	\$105
30"W x 66"H	28"W x 13"H	\$172	\$136	\$113
48"W x 66"H	42"W x 13"H	\$220	\$184	\$154
Two Color				
24"W x 66"H	22"W x 13"H	\$216	\$181	\$147
30"W x 66"H	28"W x 13"H	\$233	\$197	\$162
48"W x 66"H	42"W x 13"H	\$314	\$278	\$228

See page 35 for available fabric colors

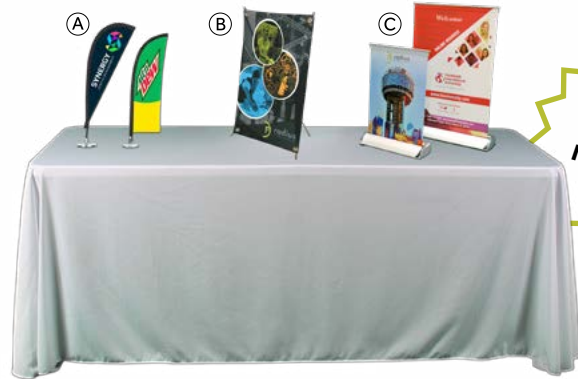
TABLE TOP DISPLAYS



Single Sided



Double Sided



See page 17 for LUMA II™ Mini Backlit Display

Table Header

	Size	
6'-8' Table Header (Hardware Only)	72"/96" x 44"	\$294
6' Banner Header (Single Sided)	72"x12"	\$96
6' Full Header (Single Sided)	72"x44"	\$258
8' Banner Header (Single Sided)	96"x12"	\$117
8' Full Header (Single Sided)	96"x44"	\$336
6' Banner Header (Double Sided)	72"x12"	\$120
6' Full Header (Double Sided)	72"x44"	\$441
8' Banner Header (Double Sided)	96"x12"	\$162
8' Full Header (Double Sided)	96"x44"	\$600

A Mini Flags

	Flag Kit (Hardware & Flag)	Flag Only
Feather Style Single-Sided	\$26	\$12
Feather Style Double-Sided	\$28	\$16
Teardrop Style Single-Sided	\$27	\$14
Teardrop Style Double-Sided	\$30	\$17
Size: 5.5"W x 17.7"H (Feather) 8.6"W x 15"H (Teardrop)		



B XStand™ Mini

XStand Mini Kit	\$58
Replacement Graphic	\$29
Size: 12"W x 17"H	



C Mini Rollup

	Qty 1	Qty 25
Small Mini Rollup	\$86	\$25
Large Mini Rollup	\$102	\$55
Size: 8.3"W x 11.7"H (Small) 11.7"W x 16.5"H (Large)		



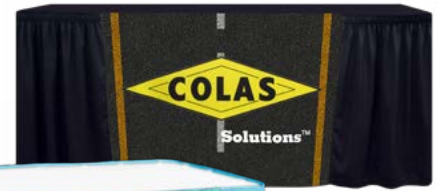
TABLE SKIRTING



Screen Print Multivision™ Skirting

	1-49'	50-99'	100'+	Counter Ht. (40")
One Color				
Price Per Foot	\$26.43	\$16.33	\$14.63	+\$7
Two Color				
Price Per Foot	\$37.43	\$24.13	\$20.73	+\$7

Includes Omni Clips.



RasterPrint™ MaxiVision™ Skirting

	Full Print	Banner Size	Counter Ht. (40")
13' x 29"H Skirt	40"W	\$257.80	+\$58
17' x 29"H Skirt	40"W	\$288.80	+\$78
17' x 29"H Skirt	60"W	\$345.80	+\$76
21' x 29"H Skirt	60"W	\$386.60	+\$96

Includes Omni Clips.



Screen Print MaxiVision™ Skirting

One Color	Banner Size	1	2	3-6	7-12	Counter Ht. (40")
13' x 29"H Skirt	40"W	\$390.80	\$314.80	\$268.80	\$236.80	+\$58
17' x 29"H Skirt	40"W	\$421.80	\$345.80	\$299.80	\$267.80	+\$78
17' x 29"H Skirt	60"W	\$437.80	\$361.80	\$315.80	\$283.80	+\$76
21' x 29"H Skirt	60"W	\$478.60	\$402.60	\$356.60	\$324.60	+\$96
Two Color						
13' x 29"H Skirt	40"W	\$527.80	\$420.80	\$342.80	\$288.80	+\$58
17' x 29"H Skirt	40"W	\$579.80	\$451.80	\$373.80	\$319.80	+\$78
17' x 29"H Skirt	60"W	\$595.80	\$467.80	\$389.80	\$335.80	+\$76
21' x 29"H Skirt	60"W	\$636.60	\$508.60	\$430.60	\$376.60	+\$96

Includes Omni Clips.

Imprint Size: 36" x 18"H (for 40"W Banner); 42" x 18"H (for 60"W Banner)

XpressScan® MaxiVision™ Skirting

One Color	Banner Size	1	2	3-6	7-30	Counter Ht. (40")
13' x 29"H Skirt	40"W	\$325.80	\$289.80	\$259.80	\$241.80	+\$58
17' x 29"H Skirt	40"W	\$356.80	\$320.80	\$290.80	\$272.80	+\$78
17' x 29"H Skirt	60"W	\$372.80	\$336.80	\$306.80	\$288.80	+\$76
21' x 29"H Skirt	60"W	\$413.60	\$377.60	\$347.60	\$329.60	+\$96
Two Color						
13' x 29"H Skirt	40"W	\$398.80	\$383.80	\$333.80	\$310.80	+\$58
17' x 29"H Skirt	40"W	\$450.80	\$414.80	\$364.80	\$341.80	+\$78
17' x 29"H Skirt	60"W	\$466.80	\$430.80	\$380.80	\$357.80	+\$76
21' x 29"H Skirt	60"W	\$507.60	\$471.60	\$421.60	\$398.60	+\$96

Includes Omni Clips. See page 35 for available XpressScan imprint colors.

Imprint Size: 36" x 13"H (for 40"W Banner); 42" x 13"H (for 60"W Banner)

Pleat Styles



Shirred
Simple, most versatile



Box
Double sided pleats, most elegant



Royal Box
Continuous box pleats



Accordion
Formal Fold overpleats, same direction



Flat
No pleating

Pricing shown is for Shirred Pleating. Call for a quote on other pleat styles.



BACKDROPS



RasterPrint™ MaxiVision™ Backdrop

Full Print

10' x 8' (3 Panel)	\$586
20' x 8' (6 Panels)	\$1,171
30' x 8' (9 Panels)	\$1,756

Each set (3 panels) includes (1) 60" flat printed panel & (2) 30" Shirred, Box or Accordion pleat drapes. Includes Backdrop Clips. Hardware not included.



Backdrop Clip
page 28



XpressScan® MaxiVision™ Backdrop

One Color

10'W x 8'H (3 Panels)	\$416
20'W x 8'H (6 Panels)	\$760
30'W x 8'H (9 Panels)	\$1,050

Two Color

10'W x 8'H (3 Panels)	\$510
20'W x 8'H (6 Panels)	\$948
30'W x 8'H (9 Panels)	\$1,272

Each set (3 panels) includes (1) 60" flat printed panel & (2) 30" Shirred, Box or Accordion pleat drapes. See page 35 for available XpressScan imprint colors. Includes Backdrop Clips. Hardware not included.
Imprint Size: 54" x 13"H



Screen Print MaxiVision™ Backdrop

One Color

10'W x 8'H (3 Panels)	\$481
20'W x 8'H (6 Panels)	\$810
30'W x 8'H (9 Panels)	\$1,077

Two Color

10'W x 8'H (3 Panels)	\$639
20'W x 8'H (6 Panels)	\$1,022
30'W x 8'H (9 Panels)	\$1,299

Each set (3 panels) includes (1) 60" flat printed panel & (2) 30" Shirred, Box or Accordion pleat drapes. Includes Backdrop Clips. Hardware not included.
Imprint Size: 40" x 28"H



RasterPrint™ Flat Backdrop Overlay

Full Print

10' x 8' (1 Panel)	\$848
20' x 8' (2 Panels)	\$1,696
30' x 8' (3 Panels)	\$2,544

Includes Backdrop Clips. Hardware not included.



Drape
Travel Case
page 31



Screen Print MultiVision™ Backdrop

One Color

10' x 8' (3 Panels)	\$836
20' x 8' (6 Panels)	\$1,240
30' x 8' (9 Panels)	\$1,860

Two Color

10' x 8' (3 Panels)	\$1,151
20' x 8' (6 Panels)	\$1,732
30' x 8' (9 Panels)	\$2,598

Manufactured from Twill fabric with Shirred pleating. Includes Backdrop Clips. Hardware not included.
Imprint Size: 28" x 16"H (5-8 logos imprints per panel).

See page 35 for available fabric colors

See pages 20 & 21 for pipe and base hardware



COUNTERS

See Page 15 for Pack-n-Go Convertible Counter

See Page 17 for LUMA II™ Backlit Counter



Radius® Counter

Counter & Graphic	\$813
Replacement Graphic	\$192

Includes: RasterPrint graphic, pop-up frame, countertop & carry case
Graphic Size: 69"W x 39.25"H (Front & Sides)
 39.375"W x 39.25"H (Front Only)
Counter Size: 42"W x 15.5"D x 41"H
Weight: 23 lbs



Case 2 Counter™

Case-2-Counter & Graphic	\$1,850
Replacement Graphic	\$201

Includes: RasterPrint graphic, travel case & countertop
Graphic Size: 72"W x 39"H
Counter Size: 25"W x 16"D x 39"H (Closed)
 55"W x 23"D x 40"H (Open)
Weight: 55 lbs



Portable Table

30'-42'H Adjustable Table (Hardware Only)	\$597
30"H Unprinted Stretch Cover	\$77
42"H Unprinted Stretch Cover	\$99
30"H RasterPrint™ Stretch Cover	\$310
42"H RasterPrint™ Stretch Cover	\$337

Table Size: 16.25" x 22" x 30"/42"H



LITERATURE STANDS

Deluxe Literature Stand

Deluxe Stand w/ Soft Case	\$496
Deluxe Stand w/ Wheeled Hard Case	\$672

Includes: Literature stand and soft case.
 Hard case optional.
Size: 10"W x 10.5"H x 62"D (Extended)
 10"W x 10.5"H x 15.5"D (Closed)
Weight: 18.5 lbs.



Roll Up Literature Stand

4 Pocket Rollup Stand w/ Soft Case	\$90
8 Pocket Rollup Stand w/ Soft Case	\$101

Includes: Literature stand and soft case.
Size: 22"W x 58.5"H x 12"D
Weight: 3.5 lbs.
 Maximum 50 sheets per pocket



DIRECTOR CHAIRS



Unprinted Director Chair

	1-3	4-19	20-29	30-100
Premium Chair Standard Height	\$357	\$351	\$344	\$321
Premium Chair Counter Height	\$388	\$380	\$373	\$347
Value Chair Standard Height	\$324	\$318	\$312	\$291
Value Chair Counter Height	\$350	\$343	\$337	\$314

Includes chair frame and canvas set.



RasterPrint™ Director Chair

Full Print - Single Sided Chair Back	1-3	4-19	20-29
Premium Chair Standard Height	\$425	\$417	\$401
Premium Chair Counter Height	\$456	\$446	\$430
Value Chair Standard Height	\$392	\$384	\$369
Value Chair Counter Height	\$418	\$409	\$394
Full Print - Double Sided Chair Back & Seat			
Premium Chair Standard Height	\$465	\$456	\$437
Premium Chair Counter Height	\$496	\$485	\$466
Value Chair Standard Height	\$432	\$423	\$405
Value Chair Counter Height	\$458	\$448	\$430



XpressScan® Director Chair

One Color	1	2-3	4-19
Premium Chair Standard Height	\$444	\$408	\$387
Premium Chair Counter Height	\$475	\$439	\$416
Value Chair Standard Height	\$411	\$375	\$354
Value Chair Counter Height	\$437	\$401	\$379
Two Color			
Premium Chair Standard Height	\$459	\$417	\$400
Premium Chair Counter Height	\$490	\$448	\$429
Value Chair Standard Height	\$426	\$384	\$367
Value Chair Counter Height	\$452	\$410	\$392

Pricing includes ONE imprint (Front or Back).
A second imprint is available for an additional charge.
See page 35 for available XpressScan imprint colors.
Imprint Size: 13"W x 5"H.



Screen Print Director Chair

One Color	1	2-3	4-6
Premium Chair Standard Height	\$477	\$425	\$391
Premium Chair Counter Height	\$508	\$456	\$420
Value Chair Standard Height	\$444	\$392	\$358
Value Chair Counter Height	\$470	\$418	\$383
Two Color			
Premium Chair Standard Height	\$587	\$488	\$427
Premium Chair Counter Height	\$618	\$519	\$456
Value Chair Standard Height	\$554	\$455	\$394
Value Chair Counter Height	\$580	\$481	\$419

Pricing includes ONE imprint (Front or Back).
A second imprint is available for an additional charge.
Imprint Size: 13"W x 5"H

Standard Height Frame Size: 24"W x 17"H
Counter Height Frame Size: 24"W x 30"H
Seat Size: 20"W x 15"H
Back Size: 20"W x 6"H

Frame Colors



Director Chairs fit in our
Expandable Shipping Cases.
See page 31.

Canvas Colors



BANNER STANDS



Slim Stand™

	Single Sided*	Double Sided
2' Slim Stand	\$461	\$491
Replacement Banner (24.5"W x 91"H)	\$270	\$300
3' Slim Stand	\$581	\$689
Replacement Banner (36.5"W x 91"H)	\$354	\$462
4' Slim Stand	\$768	\$948
Replacement Banner (48.5"W x 91"H)	\$420	\$600
5' Slim Stand	\$891	\$1,149
Replacement Banner (60.5"W x 91"H)	\$504	\$762

Includes: RasterPrint pillowcase banner, frame and case.
*Single Sided banners come with solid Twill backer.
See page 35 for available Twill colors.



X-Stand™

Small X-Stand	\$159
Replacement Banner (24"W x 63"H)	\$119
Medium X-Stand	\$212
Replacement Banner (31.5"W x 70.9"H)	\$170
Large X-Stand	\$342
Replacement Banner (47.25"W x 82.75"H)	\$269

Includes: RasterPrint banner, frame and case.



Tilt™ Banner Stand

	Frame & Banner	Replacement Banner
36" x 62" Tilt	\$482	\$162
36" x 78" Tilt	\$521	\$201
40" x 75" Tilt	\$530	\$210
48" x 72" Tilt	\$560	\$240

Includes: RasterPrint banner, frame and case.



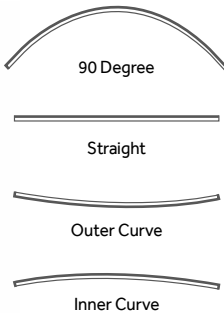
See page 7 for X-Stand Mini Tabletop Display.



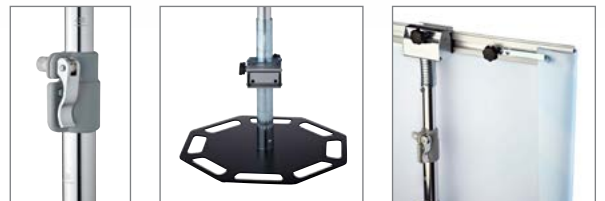
RasterPrint™ Fabric System

136" x 96" H Kit (seamless)	\$2,293
Replacement Graphic	\$921

Includes: 2 poles, 2 bases, 6 profiles, 4 connectors, 4 end holders, soft case
Max graphic size w/ seam: 136"W x 114"H
Max graphic size w/o seam: 136"W x 96"H



Additional poles and profiles available to extend length. Call for details.



Big or small, we've got them all!



Econo-L™ Banner Stand

Econo-L Small	\$224
Replacement Banner (29.5"W x 78"H)	\$162
Econo-L Large	\$267
Replacement Banner (35.5"W x 78"H)	\$201

Includes: RasterPrint banner, frame and case.
Velcro® receptive banner available.



See page 7 for Mini Roll-Up Tabletop Displays.



Adjustable Portable Pole System

	Frame & Banner	Replacement Banner
5' W x 8' H	\$783	\$400
8' W x 8' H	\$1,023	\$640
10' W x 8' H	\$1,185	\$802

Frame is adjustable to 60"-144"W x 60"-120"H
Call for a quote on custom banner sizes.
Includes: Single-sided RasterPrint mural, frame and case.
Banner manufactured with top & bottom rod pockets.



Variable Height
Call for a Quote



Economy Roll-Up Banner

Frame & Banner	\$384
Replacement Graphic	\$267

Includes: RasterPrint banner, frame and case.
Graphic Size: 33.5" x 80.3"H



Deluxe Roll-Up Banner

Frame & Banner	\$636
Replacement Graphic	\$339

Includes: RasterPrint banner, frame and case.
Graphic Size: 36" x 70.5 - 93.5"H (Adjustable)



Replacement graphics, additional sizes and colors available. Call for pricing.

BACKWALLS



RasterPrint™ Portable Back Wall

8'W x 8'H	Single Sided	Double Sided
Frame & Graphic	\$3,373	\$3,628
Replacement Graphic	\$1,017	\$1,281
Graphic Size	94"W x 95"H	
10'W x 8'H		
Frame & Graphic	\$3,707	\$4,119
Replacement Graphic	\$1,176	\$1,602
Graphic Size	123.75"W x 95"H	

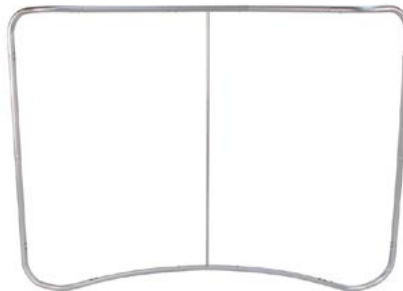
Includes: RasterPrint graphic, frame and soft rolling case.
Weight: 46.5 lbs (8'), 51.5 lbs (10')



Curvo™ Table Top

	Single Sided	Double Sided
Frame & Graphic	\$674	\$932
Replacement Graphic	\$402	\$660
Includes: RasterPrint graphic, frame and soft case.		
Size: 76"W x 62"H (Graphic); 72"W x 8"D x 60"H (Frame)		
Weight: 10.6 lbs		
Throw cover not included.		

Easy Setup. No Tools Required.



Curvo™ Back Wall

	Single Sided	Double Sided
8' Frame & Graphic	\$988	\$1,402
8' Replacement Graphic	\$708	\$1,122
10' Frame & Graphic	\$1,320	\$1,902
10' Replacement Graphic	\$1,020	\$1,602
20' Frame & Graphic	\$3,125	\$4,439
20' Replacement Graphic	\$1,890	\$3,204

Includes: RasterPrint graphic, frame and soft case.
Graphic Size / Weight : 8' - 96"W x 93"H / 17.16 lbs
 10' - 125"W x 93"H / 19.58 lbs
 20' - 253"W x 93"H / 30.69 lbs



SHELVING

Xpress Shelf

Xpress Shelf Kit	\$1,636
Replacement Graphic	\$227
Replacement Shelf	\$31 each

Includes: Frame, 12 Shelves, Graphic & Carry Bag
Size: 62"W x 48"H x 9"D (Extended)
 10"W x 17"H x 8"D (Closed)
Weight: 27 lbs.

**Fast, Pop-Up Design,
 No Tools Required**

**Showcase Product or
 Giveaways with ease!**



RASTERPRINT PORTABLE GRAPHICS SYSTEM **RPGS**



8' RPGS Tower

8' RPGS Tower (1x3)	w/ End Caps	w/o End Caps
Frame & Graphic	\$964	\$760
Replacement Graphic	\$432	\$228

Includes: RasterPrint graphic, frame and soft carry case.
Graphic Size: 57.5"W x 88"H (w/ End Caps)
 30"W x 88"H (w/o End Caps)



RPGS Back Wall

8' RPGS Back Wall (3x3)	w/ End Caps	w/o End Caps
Frame & Graphic	\$1,268	\$1,064
Replacement Graphic	\$876	\$672
Graphic Size	117.5"W x 90"H	90"W x 90"H

10" RPGS Back Wall (4x3)

Frame & Graphic	\$1,569	\$1,353
Replacement Graphic	\$1,104	\$888
Graphic Size	146.5"W x 90"H	119"W x 90"H

Includes: RasterPrint graphic, frame and soft case.



RPGS Curved Back Wall

8' RPGS Curved Back Wall (3x3)	w/ End Caps
Frame & Graphic	\$1,220
Replacement Graphic	\$828
Graphic Size	113"W x 90"H

10' RPGS Curved Back Wall (4x3)

Frame & Graphic	\$1,533
Replacement Graphic	\$1,068
Graphic Size	141"W x 90"H

Includes: RasterPrint graphic, frame and soft case.



**Easy Setup.
No Tools
Required.**



RPGS Table Top

6' RPGS Table Top (2x3)	w/ End Caps	w/o End Caps
Frame & Graphic	\$1,062	\$924
Replacement Graphic	\$504	\$366
Graphic Size	88.25"W x 60.75"H 59.25"W x 60.75"H	

8' RPGS Table Top (3x3)

Frame & Graphic	\$1,241	\$1,109
Replacement Graphic	\$576	\$444
Graphic Size	115.5"W x 59"H	88"W x 59"H

Includes: RasterPrint graphic, frame and soft case.
 Throw cover not included.



Travel case to counter conversion in seconds!

Pack-n-Go Convertible Travel Case

Pack-n-Go Case	\$552
Graphic Wrap	\$453
Case Size:	40.87"W x 20.29"D x 46.68"H (Counter Dim) 40.87"W x 20.29"D x 14.85"H (Outside Case Dim) 38.07"W x 16.93"D x 14.45"H (Inside Case Dim)
Graphic Size:	38.58"W x 45.68"H (Front/Back) 17.7"W x 45.68"H (Sides)
Weight:	60 lbs



LUMA II™

BACKLIT MODULAR DISPLAY SYSTEM



LED Backlit



Full-color RASTERPRINT™



PANTONE™ Color Matching Available



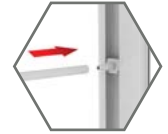
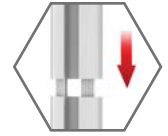
Lightweight Design



Fast & Easy Setup



No Tools Required



Silicone Edge Graphics



Built in LED Lighting



Integrated DC Connections

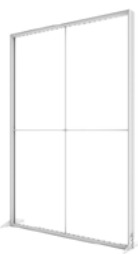


Frames



3 ft

36" Width
96" / 78" Height



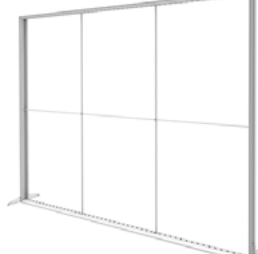
5 ft

60" Width
96" / 78" Height



8 ft

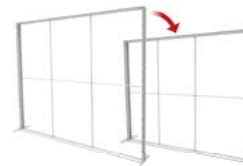
96" Width
96" / 78" Height



10 ft

118" Width
96" / 78" Height

Adjustable 96" or 78" Height



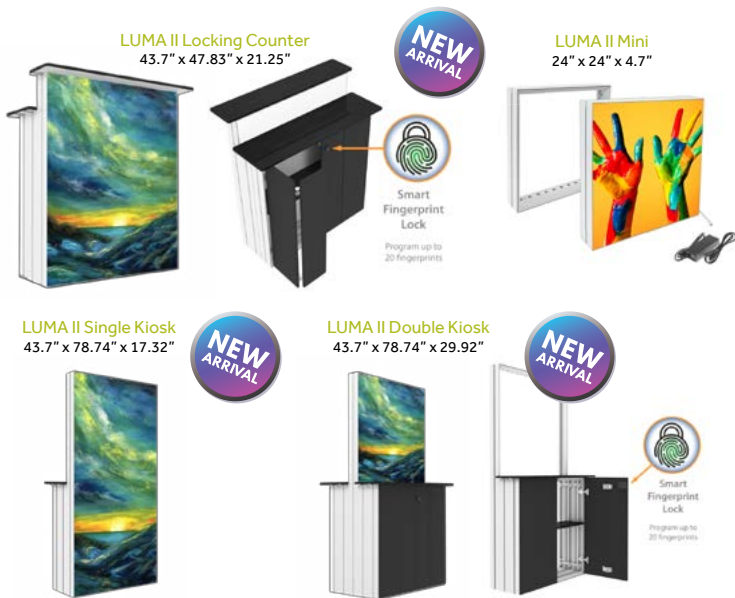
All frames include a padded case

LUMA II Counter

39.5" x 39.5"
Single or Double Sided



Double-Sided Graphics
Frame Composition: Fire-Resistant Synthetic Structured PVC
Fabric: Fire-Resistant Backlit Polyester



LUMA II

Kits (Frame, Lights, Transformer, Feet, Bag)

Luma II 3'x8' Kit (No Graphic)	\$1,258
Luma II 5'x8' Kit (No Graphic)	\$1,921
Luma II 8'x8' Kit (No Graphic)	\$2,501
Luma II 10'x8' Kit (No Graphic)	\$3,204
Luma II Counter Kit (No Graphic)	\$871
Luma II Locking Counter Kit (No Graphic)	\$2,147
Luma II Single Kiosk Kit (No Graphic)	\$2,336
Luma II Double Kiosk Kit (No Graphic)	\$3,432
Luma II Mini (2'x2') (No Graphic)	\$594

Graphics (Unprinted Backers available for Single Sided unit - Call for pricing)

Graphic (Single) for Luma II 3'x8'	\$314
Graphic (Single) for Luma II 3'x6.5 (Short)	\$264
Graphic (Single) for Luma II 5'x8'	\$524
Graphic (Single) for Luma II 5'x6.5 (Short)	\$432
Graphic (Single) for Luma II 8'x8'	\$838
Graphic (Single) for Luma II 8'x6.5 (Short)	\$681
Graphic (Single) for Luma II 10'x8'	\$1,048
Graphic (Single) for Luma II 10'x6.5 (Short)	\$852
Graphic (Single) for Luma II Counter	\$146
Graphic (Single) for Luma II Locking Counter	\$186
Graphic (Single) for Luma II Kiosk	\$303
Graphic for Luma II Mini 2'x2'	\$54

Connectors

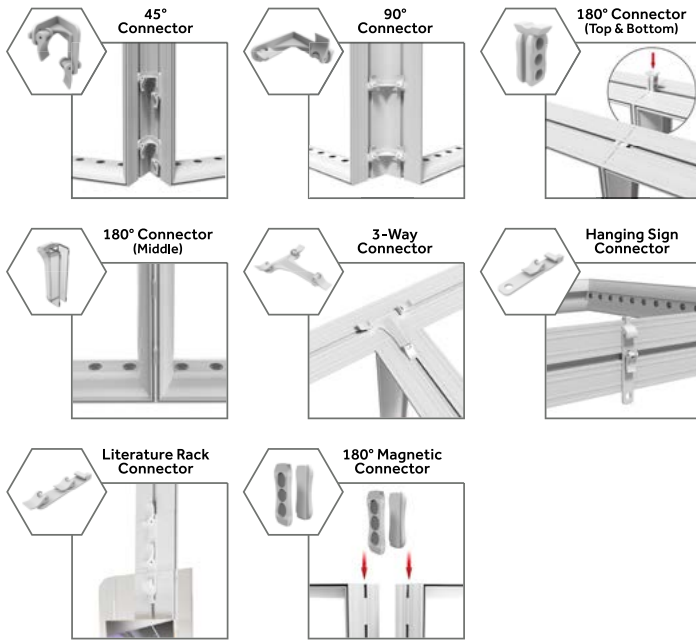
Connector 45°	\$39
Connector 90°	\$39
Connector 180° (Top/Bottom)	\$22
Connector 180° (Top/Bottom Magnetic - 2Pk)	\$39
Connector 180° (Middle)	\$22
Connector "T" Style	\$39
Connector for Hanging Signs	\$39
Connector for Literature Holder	\$39
Connector - Shelf - Single (2/Pk)	\$77
Connector - Shelf - Double (2/Pk)	\$86

Accessories

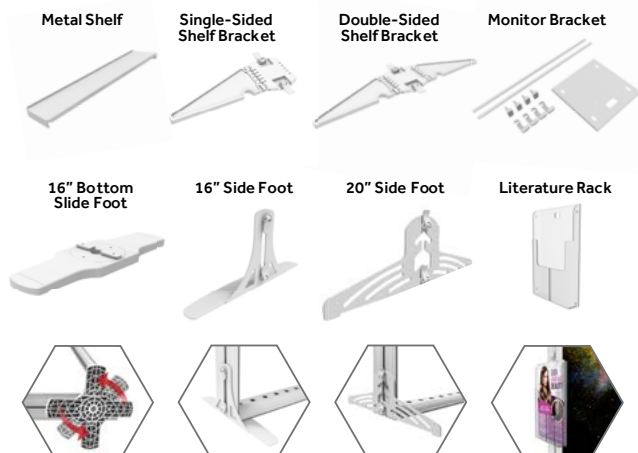
Metal Shelf (3')	\$171
Monitor Bracket	\$143
Literature Holder	\$22
Foot - Side Locked 16"	\$66
Foot - Side Locked 20"	\$66
Foot - Bottom Slide 16"	\$39
Power Extension Cord - 5'	\$36
Power Supply - 90W (3'x8', Counter, Mini)	\$152
Power Supply - 160W (5'x8')	\$325
Power Supply - 280W (8'x8', 10'x8')	\$438
Luma II Small Travel Case (3'x8', Mini)	\$594
Luma II Large Travel Case (5'x8', 8'x8', 10'x8')	\$896



Connectors



Accessories



TENTS & FLAGS



Lead times may vary.
Call for estimated lead time.



Tents

10' x 10' Tent Frame & Canopy Kit (Hex)	\$1,363
Replacement Canopy	\$574
Single Sided Back Wall	\$289
Double Sided Back Wall	\$486
Single Sided Half Wall	\$227
Double Sided Half Wall	\$314

Square frame includes hard sided rolling storage case.
Hex frame includes standard rolling bag.
UV/Mold/Stain Resistant, Waterproof
Other sizes and frame styles available. Call for details.

Accessories

Rail Poles (For Half Wall)	\$151
Tent Frame Flag Mount	\$238
Water Tent Weight (4 pk)	\$120
Tent Weight (33 lbs) (4 pk)	\$569



Flags



Feather Flag	Qty	Indoor Flag Kit		Outdoor Flag Kit		Replacement Flags	
		Single Sided	Double Sided	Single Sided	Double Sided	Single Sided	Double Sided
Small (9'H)	1	\$527	\$559	\$424	\$456	\$132	\$164
	5	\$327	\$353	\$233	\$259	\$49	\$75
Medium (13'H)	1	\$563	\$619	\$458	\$514	\$141	\$197
	5	\$362	\$400	\$260	\$298	\$63	\$101
Large (15'H)	1	\$600	\$657	\$495	\$552	\$173	\$230
	5	\$395	\$452	\$293	\$350	\$85	\$142
Teardrop Flag							
Small (9'H)	1	\$531	\$563	\$428	\$460	\$134	\$166
	5	\$330	\$358	\$236	\$264	\$50	\$78
Medium (12'H)	1	\$594	\$636	\$488	\$530	\$170	\$212
	5	\$382	\$434	\$280	\$332	\$81	\$133
Large (15'H)	1	\$618	\$692	\$513	\$587	\$184	\$258
	5	\$417	\$497	\$315	\$395	\$100	\$180

HANGING BANNERS

Hanging Banner Structures

	Graphic Size	Price	Replacement Graphic
6' Round	6'D x 2.5'H	\$2,119	\$1,178
8' Round	8'D x 3.5'H	\$3,450	\$2,197
10' Round	10'D x 3.5'H	\$4,192	\$2,746
12' Round	12'D x 3.5'H	\$5,026	\$3,294
6' Tapered	6'D x 2.5'H	\$2,147	\$1,178
8' Tapered	8'D x 3.5'H	\$3,517	\$2,197
10' Tapered	10'D x 3.5'H	\$4,260	\$2,746
12' Tapered	12'D x 3.5'H	\$5,093	\$3,294

	Graphic Size	Price	Replacement Graphic
10' x 5' Rectangle	10' x 5' x 3'H	\$3,510	\$2,248
12' x 6' Rectangle	12' x 6' x 4'H	\$5,198	\$3,596
16' x 8' Rectangle	16' x 8' x 4'H	\$6,958	\$4,795
8' Square	8' x 8' x 3'H	\$3,708	\$2,398
10' Square	10' x 10' x 3'H	\$4,752	\$3,009
12' Square	12' x 12' x 4'H	\$7,108	\$4,795
8' Triangle	8' x 8' x 3'H	\$2,790	\$1,798
10' Triangle	10' x 10' x 3'H	\$3,568	\$2,257
12' Triangle	12' x 12' x 4'H	\$5,329	\$3,596

Includes: RasterPrint double-thick seamless banners with full outside image, frame, rigging, and case.

Note: Rigging requirements may vary between venues.
Call for other available sizes.



Prices, turnaround times and availability are subject to change at any time.
Please review pricing disclaimer on Page 32 before quoting prices.

AUDIO / VISUAL

DISPLAY PRODUCTS



PIPE & DRAPE



Lead times may vary.
Call for estimated lead time.



Uprights

2-Stage Adjustable	Weight	Silver	Black
3' - 5'	2.8 lbs	\$96	\$114
4' - 7'	3.8 lbs	\$107	\$131
5' - 8'	4.8 lbs	\$113	\$140
6' - 10'	5.2 lbs	\$125	\$158
7' - 12'	5.8 lbs	\$136	\$175
8' - 14'	6.2 lbs	\$148	\$193
9' - 16'	7 lbs	\$159	\$210
10' - 18'	8 lbs	\$171	\$228
11' - 20'	8.5 lbs	\$183	\$249
12' - 22'	9.5 lbs	\$195	\$264
13' - 24'	10 lbs	\$207	\$285
14' - 26'	10.5 lbs	\$219	\$301

3-Stage Adjustable

5' - 11'	\$214	\$256
6' - 14'	\$232	\$283
7' - 17'	\$250	\$310
8' - 20'	\$269	\$338
9' - 23'	\$287	\$365

Fixed Upright (1.5" Diameter)

3'	\$16	\$23
8'	\$35	\$57
10'	\$56	\$86
12'	\$67	\$103

Crossbars

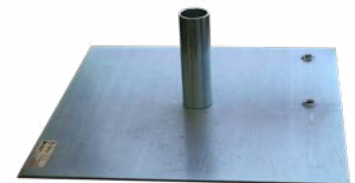
Adjustable	Variable Lengths	Weight	Silver	Black
2' - 3'	2', 3'	1.5 lbs	\$26	\$38
3' - 5'	3', 5'	2.8 lbs	\$34	\$52
4' - 7'	4', 6', 7'	3.8 lbs	\$42	\$66
5' - 8'	5', 8'	4.8 lbs	\$49	\$79
6' - 10'	6', 8', 10'	5.2 lbs	\$54	\$90
7' - 12'	7', 10', 12'	5.8 lbs	\$61	\$103
8' - 14'	8', 10', 12', 14'	6.2 lbs	\$71	\$119
9' - 16'	9', 12', 14', 16'	7 lbs	\$79	\$133

Bases

Size	Max Upright Ht.	Pin Size	Weight	Silver	Black
8" x 14"	3'	1.5"	6 lbs	\$33	\$37
14" x 16"	8'	1.5"	12 lbs	\$51	\$56
18" x 18"	12'	2" x 4"	17 lbs	\$96	\$96
18" x 18"	16'	2" x 6"	35 lbs	\$163	\$172
24" x 24"	20'	2" x 8"	31 lbs	\$154	\$168
24" x 24"	24'	2" x 8"	62 lbs	\$340	\$359

Base Carry Bag

19" x 19" (Holds 4 bases & 4 pins) \$109



REPLACEMENT PARTS

Adjustable Upright Replacement Parts

Base Plate Pin & Screw Assembly	2" x 4"	\$20
	2" x 6"	\$24
	2" x 8"	\$28
Slip-Lock™ Repair Kit (for Adjustable Upright 2" O.D.)		\$58
End Cap Repair Kit (for PC Adjustable Upright - Black or Silver)		\$10



Crossbar Replacement Parts

End Plug Assembly (Large or Small End)	\$6
Spring Button Assembly	\$4



Lead times may vary.
Call for estimated lead time.



Hardware Dollies

Dolly for 9' - 16'H Adjustable Uprights (100 pc. Capacity)	\$1,659
Dolly for 18" x 18" Bases (80 - 70 lbs, or 40 - 35 lbs Capacity)	\$1,278
Dolly for 7' - 12'H Adjustable Crossbars (250 pc. Capacity)	\$1,485

PIPE & DRAPE 2.0



Uprights

2-Stage Adjustable	Weight	Silver	Black
3' - 5'	2.8 lbs	\$135	\$153
4' - 7'	3.8 lbs	\$144	\$168
5' - 8'	4.8 lbs	\$156	\$186
6' - 10'	5.2 lbs	\$183	\$222
7' - 12'	5.8 lbs	\$210	\$258
8' - 14'	6.2 lbs	\$240	\$294
9' - 16'	7 lbs	\$267	\$327
10' - 18'	8 lbs	\$303	\$372
11' - 20'	8.5 lbs	\$330	\$405
12' - 22'	9.5 lbs	\$360	\$435

3-Stage Adjustable

5' - 11'	\$249	\$303
6' - 14'	\$276	\$333
7' - 17'	\$315	\$381
8' - 20'	\$357	\$432
9' - 23'	\$396	\$483
11' - 26'	\$486	\$594

Fixed Upright (1.5" Diameter)

3'	\$33	\$45
8'	\$81	\$120
10'	\$102	\$150

Fixed Upright (2" Diameter)

3'	\$42	\$66
8'	\$96	\$120
10'	\$108	\$150

Crossbars

Adjustable	Variable Lengths	Weight	Silver	Black
2' - 3'	2', 3'	1.5 lbs	\$60	\$75
3' - 5'	3', 5'	2.8 lbs	\$69	\$87
4' - 7'	4', 6', 7'	3.8 lbs	\$87	\$108
5' - 8'	5', 8'	4.8 lbs	\$99	\$123
6' - 10'	6', 8', 10'	5.2 lbs	\$117	\$147
7' - 12'	7', 10', 12'	5.8 lbs	\$117	\$171
8' - 14'	8', 10', 12', 14'	6.2 lbs	\$156	\$195
9' - 16'	9', 12', 14', 16'	7 lbs	\$174	\$219

Fixed Crossbar

12'	\$60	N/A
-----	------	-----

Accessories

Angle Mount Crown (Fixed)	\$45
Angle Mount Crown (Swivel)	\$42
Pipe Clamp	\$22
Side Arm (For Multiple Drape Lines)	\$36
Accessory Arm (For Signage)	\$30
Mounting Post (6 Pack) (For Lights or Cameras)	\$213
Threaded Ball Stud (10 Pack) (US 5/16")	\$90
Threaded Ball Stud (10 Pack) (Metric M8)	\$90
Deco Slot Clip (10 Pack)	\$36
Anti-Roll Clip (10 Pack)	\$36
Cable Management Arm	\$51
Mic-Stand Crown (6 Pack)	\$195
Pipe Caddy	\$110

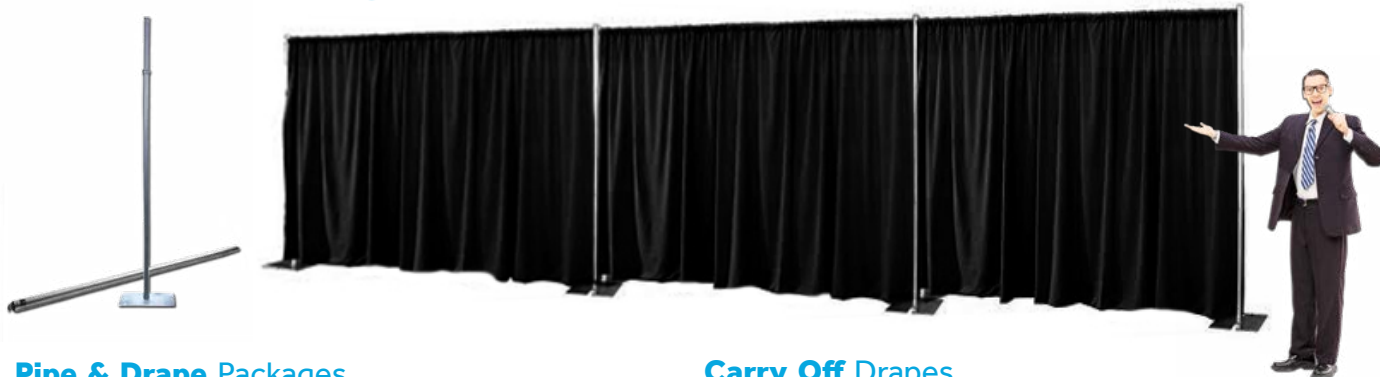


Pipe & Drape 2.0[®] Accessory Kit

(2) Side Arm	(2) Threaded Ball Stud
(2) Accessory Arm	(2) Deco Slot Clip
(2) Angle Mount	(2) Corrugated Carry Case
(2) Pipe Clamp	(2) Anti Roll Clips
(2) Mounting Post	(2) Mic Stand Crowns

\$763

DRAPES



Pipe & Drape Packages

Package	Standard	Pipe & Drape 2.0™
60'W x 16'H Drape & Hardware		
(18) 16'H Poly Velour Backdrop Panels		
(7) 9' - 16'H Adjustable Upright		
(6) 7' - 12' Adjustable Crossbars	\$8,436	\$10,046
(7) 35 lbs Bases		
(1) Storage & Shipping Bag		
(2) Medium Expandable Shipping Case		
100'W x 16'H Drape & Hardware		
(30) 16'H Poly Velour Backdrop Panels		
(11) 9' - 16'H Adjustable Upright		
(10) 7' - 12' Adjustable Crossbars	\$13,648	\$15,953
(11) 35 lbs Bases		
(1) Storage & Shipping Bag		
(3) Medium Expandable Shipping Case		

Carry Off Drapes

Size (Price Per Panel)	NEW Poly Velour (54" w)	Cotton Velour (54" w)	Value-Vel (60" w)	Cameo (59" w)	Twill (64" w)
8' H	\$134	\$127	\$109	\$88	\$68
10' H	\$168	\$149	\$128	\$100	\$85
12' H	\$201	\$175	\$151	\$120	\$94
14' H	\$235	\$208	\$180	\$143	\$107
16' H	\$268	\$230	\$199	\$163	\$122
18' H	\$302	\$256	\$221	\$184	\$133
20' H	\$335	\$282	\$243	\$205	\$145
22' H	\$354	\$318	\$262	\$226	\$168

For 10'W backdrop, combine 3 panels

	Poly Velour	Cotton Velour	Value-Vel
13.5'W x 16'H Panel			
(3) 54" Panels	Qty. 1-9	\$860	\$741
Sewn Together	Qty. 10+	\$797	\$687
		\$606	

Call for special pricing on quantities greater than 30.

See page 35 for available fabric colors.



Medium Shipping Case p. 31

Pleated Backdrop Drapes

10' (3) 95" Panels	Twill	Cameo
10' Panel - Shirred	\$329	\$299
10' Panel - Accordion or Box Pleat	\$403	\$383

10'W Backdrop combines (3) 40"W Shirred OR (4) 30"W Accordion or Box Pleat Panels. Includes Backdrop Clips. Hardware not included.



Rod Pocket Backdrop Drapes

	Poly Velour	Cotton Velour	Cameo	Twill
95"H Panel	\$473	\$410	\$293	\$233
12'H Panel	\$575	\$576	\$411	\$333
16'H Panel	\$860	\$741	\$540	\$417

For 10'W Backdrop (3 Panels sewn together) No clips required. Hardware not included.

Pleated Side Rail Drapes

	Twill	Cameo
10'W x 35"H Shirred Pleat	\$129	\$161
10'W x 35"H Box or Accordion Pleat	\$183	\$226

10x10' Booths may require (2) Side Rail Drapes Includes Backdrop Clips. Hardware not included.



Rod Pocket Side Rail Drapes

	Cameo	Twill
(1) 14'W x 35"H	\$127	\$96
(3) 60"W x 35"H	\$127	\$96

10x10' Booths Require (2) 14'W Panels, OR (6) 60"W Panels. No clips required. Hardware not included.

DRAPESCAPE



Ripple



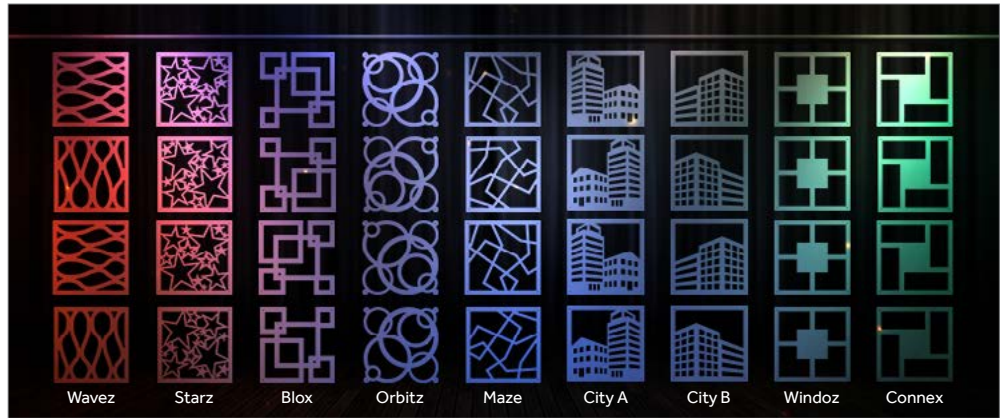
Pyramid



Concave



Zig Zag



Scenic backdrops that hang up in minutes!

DrapeScape™ 3D

	1-39	40+
DrapeScape™ 3D (12 Panels)	\$1,165	\$1,087

Includes: 12 panels, 24 S-Hooks, 12 Rod Hooks
Size: 20.75"W x 1.75"D x 20.75"H

DrapeScape™ Cuts

	1-9	10+
DrapeScape™ Cuts (12 Panels)	\$635	\$579
Custom Pattern (2 Case Minimum)	\$660	\$609

Includes: 12 panels, 24 S-Hooks, 12 Rod Hooks
Size: 20.75"W x 1.75"D x 20.75"H



Rod Hook S Hook



Panels are Silk Screen printable.
 Call for a quote.

See page 35 for available fabric colors.



Tripod Screen Skirts

84" x 39"H	\$76
84" x 48"H	\$84
50" x 39"H	\$45
60" x 39"H	\$54
60" x 48"H	\$60
72" x 39"H	\$65
72" x 48"H	\$72

Standard Shirred Pleat Skirting with hook Velcro®
 Manufactured with Twill fabric.

SCREEN DRESS KITS



Tripod Screen Drape Kit

One-Size-Fits-All (Twill)	\$265
One-Size-Fits-All (Cameo)	\$304

Fits all tripod screens up to 8'.
Includes: (2) 5"W Border Edge Drapes, Overlapping Valances, Skirting, and Velcro® tabs



Projection Screen Drape Kit

One-Size-Fits-All (Poly Velour)	\$1,635
---------------------------------	---------

Fits screens from 5' x 7' up to 10.5' x 14'.
 We pack and ship them in our easy to carry travel case.
Includes: (2) 16'H End Drapes, 15"H Overlapping Valances, 45"H Skirting, and Velcro® tabs

A/V ACCESSORY COVERS



Shirred

Box

Accordion

Twill Cart Skirts

Coverage	Size	Shirred Pleat	Accordion or Box Pleat
32"H - 14" x 18"	4 Sides 64"W x 28"H	\$54	\$76
34"H - 18" x 24"	4 Sides 84"W x 30"H	\$70	\$99
42"H - 18" x 24"	4 Sides 84"W x 38"H	\$89	\$125
41"H - 25" x 30"	4 Sides 110"W x 38"H	\$117	\$164
41"H - 25" x 30"	3 Sides* 94"W x 38"H	\$101	\$140
48"H - 25" x 30"	4 Sides 110"W x 44"H	\$134	\$189
48"H - 25" x 30"	3 Sides* 94"W x 44"H	\$115	\$161
54"H - 25" x 30"	4 Sides 110"W x 50"H	\$134	\$189
54"H - 25" x 30"	3 Sides* 94"W x 50"H	\$115	\$161

Cart Skirts are manufactured with loop Velcro® Includes hook Velcro® tabs (15)
Additional Velcro®: \$8.60 (pack of 15 tabs)
\$47 (pack of 144).

* 3 sides plus a short return are needed when equipment is used on lower shelves and needs ventilation.

See page 35 for available Twill fabric colors.

Custom Cart Skirts

(price per linear inch)

Size *	Pleat Style	Twill	Cameo
Up to 18"H	Shirred	\$0.71	\$0.65
	Box or Accordion	\$1.06	\$1.14
19"H to 30"H	Shirred	\$0.86	\$1.33
	Box or Accordion	\$1.22	\$1.82
31"H to 39"H	Shirred	\$1.10	\$1.40
	Box or Accordion	\$1.52	\$1.95
40"H to 60"H **	Shirred	\$1.25	\$1.50
	Box or Accordion	\$1.77	\$2.00

* Subtract 4" from cart height to allow for wheels.

** Cameo available in 59"H max for Shirred Pleat, or 57.5"H max for Box or Accordion Pleat.

See page 35 for available Twill & Cameo fabric colors.

Xpress® Scan Cart Skirts

(add to pricing above)

	One Color	Two Color
Qty 1	\$87	\$102
Qty 2 - 3	\$51	\$60
Qty 4-19	\$36	\$49

Add print charge to above Cart Skirt pricing for each skirt.
See page 35 for available XpressScan imprint colors.
Logo Size: 13" x 5"



Projection Stand Skirt

Top Shelf Size

Regular 64" x 30"H	11 1/4" x 19"	\$111.58
Regular 64" x 56"H	11 1/4" x 19"	\$167.58
Large 84" x 30"H	17" x 25"	\$143.51
Large 84" x 56"H	17" x 25"	\$211.51

Each skirt is triple pleated to provide for a graceful hang when legs are fully extended. Made with Twill. Includes Velcro® tabs. See page 35 for available Twill fabric colors.

Projection Stand Covers

Top Shelf Size

Regular 64" x 30"H	11 1/4" x 19"	\$157.58
Regular 64" x 56"H	11 1/4" x 19"	\$174.58
Large 84" x 30"H	17" x 25"	\$159.51
Large 84" x 56"H	17" x 25"	\$211.51

Includes sewn in pockets to secure stand feet, and 2" slit along back seam to feed cables. Made with Stretch fabric.

See page 35 for available Stretch fabric colors.

Dented, dinged up AV equipment? We've got you covered!



Pole Cover (price per foot)

	1.0 Version	2.0 Version
Twill	\$1.50	\$2.25
Cotton Velour	\$4.15	\$4.15
Poly Velour	\$4.30	\$4.30
Cameo	\$2.90	\$2.90
Luster	\$2.25	\$2.09
Satin	\$2.25	\$2.09

Please indicate if needed for Pipe & Drape 2.0™
See page 35 for available fabric colors.



Truss Cover

Twill (Wrap Style)	
Fully Printed - 12"X12"X8'H	\$458
Fully Printed - 12"X12"X10'H	\$572
Unprinted - 12"X12"X8'H	\$115
Unprinted - 12"X12"X10'H	\$143
Stretch (Sleeve Style)	
Fully Printed - 12"X12"X8'H	\$458
Fully Printed - 12"X12"X10'H	\$572
Unprinted - 12"X12"X8'H	\$115
Unprinted - 12"X12"X10'H	\$143

Available with Velcro® closure,
or slip over for easy installation.
See page 35 for available Stretch fabric colors.



Dual Pole Stand & Base Covers

Dual Pole Cover	\$57
Dual Pole Stand & Base Cover - Sloped *	\$72

Fits poles up to 84"H.
See page 35 for available Stretch fabric colors.
* Fits Premier PSD-TS72 or PSD-TS84



Dual Pole Stand Base Mats

	Size	
Rubber Mat	1/4" Thick x 36"W x 30"H	\$79
Premier Fabric Mat	36"W x 30"H	\$59

Available in Oval or Butterfly shape, specify when ordering.
Mats simply lay on top of the stand base plate.
Rubber available in black only.



Speaker Covers

	Stock #	
Mackie SRM450	CFYSRM450XX	\$88
EV ZXA1	CFYZXA1XX	\$86
EV ELX112P	CFYELX112PXX	\$95
EV ELX115P	CFYELX115PXX	\$87
EV ELX118P	CFYELX118PXX	\$105
EV SXA100	CFYSXA100XX	\$78
JBL EON 15	CFYEON15XX	\$140
Yamaha MS300	CFYMS300XX	\$91
QSC K8	CFYQSK8XX	\$87
QSC K10	CFYQSK10XX	\$73
QSC K12	CFYQSK12XX	\$91
QSC K-Sub	CFYQSKSUBXX	\$88
Bose L1 Sub and Speaker Cover	CFYBOSEL1PSXX	\$125

See page 35 for available Stretch fabric colors.



Speaker Stand Covers

	Stock #	
Small Bretford Stand	CEYFPPSMBK	\$94
Large Bretford Stand	CEYFPPLGBK	\$94
Chief Cart MFCUB	CEYMFUBBK	\$75
Ultimate Speaker Stand TS88 or TS99	CEYTS88BK	\$108
Ultimate Speaker Stand TS80 or TS90	CEYTS80BK	\$95

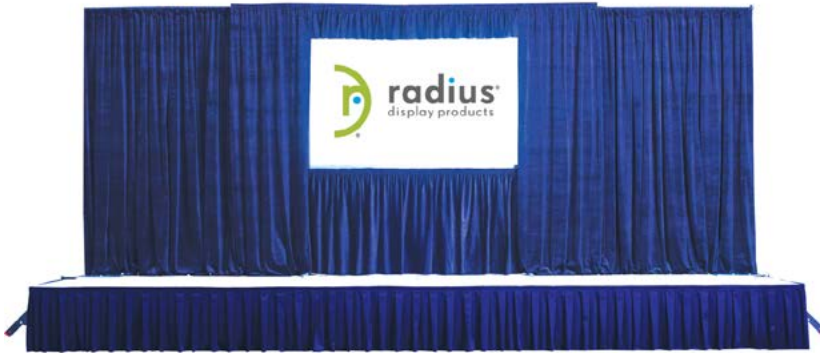


Catchbox® Cover

Rasterprint™ Catchbox Cover	\$69
-----------------------------	------

Size: 7"W x 7"D x 7"H
Fits Catchbox® Pro and Catchbox® 2.4 models.

STAGE SKIRTING



Stage & Non Standard Table Skirting (price per linear ft)

Height	Fabric	Shirred or Flat Pleat	Accordion or Box Pleat	Royal Box Pleat
Up to 18"H	Twill	\$5.90	\$10.00	\$11.20
	Luster	\$6.40	\$10.60	\$11.70
	Satin	\$6.40	\$10.60	\$11.70
	Cameo	\$7.30	\$13.20	\$13.90
	Poly Velour	\$12.70	\$18.80	\$20.00
19"H to 30"H	Twill	\$7.00	\$11.30	\$13.10
	Luster	\$7.70	\$12.20	\$14.00
	Satin	\$7.70	\$12.20	\$14.00
	Cameo	\$9.90	\$20.00	\$15.80
	Poly Velour	\$12.70	\$18.80	\$20.00
31"H to 39"H	Twill	\$9.60	\$14.70	\$15.50
	Luster	\$10.80	\$16.40	\$16.80
	Satin	\$10.80	\$16.40	\$16.80
	Cameo	\$14.00	\$20.50	\$16.80
	Poly Velour	\$20.80	\$33.20	\$36.00
40"H to 60"H	Twill	\$11.40	\$17.30	\$18.20
	Luster	\$12.90	\$19.10	\$19.70
	Satin	\$12.90	\$19.10	\$19.70
	Cameo	\$16.30	\$23.90	\$25.05
	Poly Velour	\$20.80	\$33.20	\$36.00

Pleat Styles

Shirred



Flat



Accordion



Box



Royal Box



Skirting is manufactured with loop Velcro® on the back header. Pricing is per linear foot and does not include clips. Add \$1.43 per ft for OmniClip™, \$1.05 per ft for ½" or ¾" clips. Add \$2 per ft for hook Velcro® with adhesive.

Adjustable Skirting (price per linear ft)

Height	Twill	Luster or Satin	Cameo	Cotton Velour
15" and 23"	\$16.50	\$17.40	\$21.25	\$28.00
23" and 31"	\$16.50	\$17.40	\$26.40	\$37.00
31" and 39"	\$17.95	\$19.10	\$26.40	\$37.00
39" and 47"	\$19.40	\$20.75	\$26.40	\$42.00

Skirting consists of an adjustable flat panel skirt with an 8" valance permanently attached. The valance is available with a box or accordion header. Skirting is manufactured with loop Velcro® on the back of the header. Add \$2 per ft for hook Velcro® with adhesive if needed.



Prices, turnaround times and availability are subject to change at any time. Please review pricing disclaimer on Page 32 before quoting prices.

HOSPITALITY

DISPLAY PRODUCTS



TABLE SKIRTING

Table Skirting (By the Foot)

(price per linear ft)

	Fabric	Shirred or Flat Pleat	Accordion or Box Pleat	Royal Box Pleat
No Clips	Twill	\$7.00	\$11.30	\$13.10
	Luster	\$7.70	\$12.20	\$14.00
	Satin	\$7.70	\$12.20	\$14.00
	Cameo	\$9.90	\$20.00	\$15.80
With 1/2" Clips	Twill	\$8.05	\$12.35	\$14.15
	Luster	\$8.75	\$13.25	\$15.05
	Satin	\$8.75	\$13.25	\$15.05
	Cameo	\$10.95	\$21.05	\$16.85
With 3/4" Clips	Twill	\$8.05	\$12.35	\$14.15
	Luster	\$8.75	\$13.25	\$15.05
	Satin	\$8.75	\$13.25	\$15.05
	Cameo	\$10.95	\$21.05	\$16.85
With OmniClips	Twill	\$8.43	\$12.73	\$14.53
	Luster	\$9.13	\$13.63	\$15.43
	Satin	\$9.13	\$13.63	\$15.43
	Cameo	\$11.33	\$21.43	\$17.23

Skirting manufactured at 29"H with LOOP Velcro on back header.
Pricing per linear foot.
Call for quantity price breaks on 500' or more.

See page 35 for available fabric colors.

Table Skirting (Standard Sizes)

	Fabric	Shirred or Flat Pleat	Accordion or Box Pleat	Royal Box Pleat
13' x 29"H	Twill	\$90	\$146	\$169
	Luster	\$100	\$158	\$182
	Satin	\$100	\$158	\$182
	Cameo	\$129	\$260	\$206
17.5' x 29"H	Twill	\$122	\$197	\$229
	Luster	\$134	\$213	\$244
	Satin	\$134	\$213	\$244
	Cameo	\$173	\$350	\$277
21.5' x 29"H	Twill	\$150	\$242	\$281
	Luster	\$165	\$262	\$300
	Satin	\$165	\$262	\$300
	Cameo	\$212	\$430	\$340

CLIPS NOT INCLUDED
Skirting manufactured at 29"H with LOOP Velcro on back header.



Pleat Styles



Pleated Skirting (With Omni Clips)

	Fabric	Shirred or Flat Pleat	Accordion or Box Pleat	Royal Box Pleat
13' x 29"H	Twill	\$113.80	\$169.80	\$169.80
	Luster	\$123.80	\$181.80	\$181.80
	Satin	\$123.80	\$181.80	\$181.80
	Cameo	\$152.80	\$283.80	\$283.80
17' x 29"H	Twill	\$141.80	\$214.80	\$214.80
	Luster	\$154.80	\$230.80	\$230.80
	Satin	\$154.80	\$230.80	\$230.80
	Cameo	\$191.80	\$363.80	\$363.80
21.5' x 29"H	Twill	\$181.60	\$272.60	\$272.60
	Luster	\$197.60	\$291.60	\$291.60
	Satin	\$197.60	\$291.60	\$291.60
	Cameo	\$243.60	\$455.60	\$455.60

Includes OmniClips

Clips

OmniClip II™ (20 pk)	Fits virtually every table edge from 1/2" to 1 1/2". Fits drop edge and stages. Includes valance tab for use with banners or valances.	\$23.80
Table Clips (20 pk)	1/2" or 3/4", both have valance tab attachment.	\$18.40
2" Wide Clip (20 pk)	For 3/4" edge with valance tab. These clips fill the need when a wider clip is desired. U.S Patent No. 5,090,095 & 5,544,393	\$28.60
Lifetime Clips (20 pk)	Fits "Lifetime" series tables. These tables have a white plastic top with a thick edge.	Small 3/4" - 1 1/2" \$21
		Large 1 1/2" - 2 1/2" \$34
Backdrop Clips (15 pk)	Curved end of clip hugs pole for hanging backdrop and side rail drapes.	\$47

SKIRTING SIZE CHART

Skirt Size	Table Size (With view of how skirting will wrap)
13'	48" 30" x 72" 30" x 96"
17 1/2'	60" 66" 30" x 72" 30" x 72" 30" x 72"
21 1/2'	72" 30" x 96" 30" x 96" 30" x 96"

- **Skirting Height** : Measure from top to floor then deduct one inch so it doesn't drag on the floor.
- **Skirting Length** : If table not shown above, measure perimeter of table for skirt size.
- **Round Table Length** : Multiply diameter by 3.14 and divide x 12.





Accent Valances (price per linear ft)

Style	Twill	Luster or Satin	Cameo
Austrian	\$16	\$12.25	\$19.30
Victorian	\$6.55	\$6.95	\$9.30

Pricing is per linear foot
Includes 1/2" or 3/4" clips with valance tab attachment.
Using our table clips for skirting? No additional clips are required.
Deduct \$1.05 per ft for no clips. Valances include clip covers.
Austrian Valance are manufactured in 18" increments.
(Please order accordingly 12', 13' 6", 15', etc.)
Victorian Valance are 11"H and have a Shirred pleat.

Two-Tier Skirting

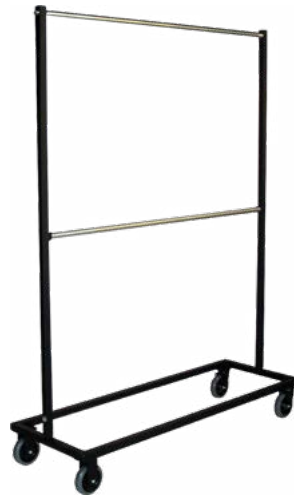
Call for sizes and pricing. (800) 322-7429



Mobile Skirt Caddy & Hangers

Mobile Skirt Caddy	\$439
Skirt Hanger (10 pk)	\$88

This two tier caddy system stores up to 20 full hangers.
Hangers hold skirting sections up to 24'.
Caddy Dimensions: 62" x 70"H with 33" between bars.
Shipped unassembled via UPS.



Round Throw Covers

Table Size	Cover Size	Twill or DURA™	Luster or Satin	Cameo
48"	106"	\$144	\$121	\$198
60"	118"	\$154	\$130	\$218
66"	124"	\$159	\$133	N/A
72"	130"	\$209	N/A	N/A

Round Throw Covers hang 1" from the floor
Seams every 64". Advise on seam placement.

See page 35 for available fabric colors.

Table Toppers

Table Size	Topper Size	Twill or DURA™	Luster or Satin	Cameo
6'	36" x 80"	\$52	\$47	\$66
8'	36" x 104"	\$64	\$58	\$85
48" Round	60" x 60"	\$46	\$42	\$55
60" Round	72" x 72"	\$68	\$61	\$88
66" Round	78" x 78"	\$70	\$68	\$99
72" Round	84" x 84"	\$85	\$77	\$115

Toppers are flat pieces of fabric that cover table tops when used with skirting.

Fitted Skirt & Topper Sets

6' x 30" x 30"H Table	Twill	Luster or Satin	Cameo
Shirred or Flat Pleat	\$177	\$194	\$242
Box or Accordion Pleat	\$249	\$272	\$413
Royal Box Pleat	\$279	\$301	\$344
8' x 30" x 30"H Table			
Shirred or Flat Pleat	\$217	\$237	\$299
Box or Accordion Pleat	\$304	\$343	\$507
Royal Box Pleat	\$342	\$370	\$426

These skirts fit a specific size table and are not interchangeable between sizes.
No Clips required, skirt is sewn to topper.
Please advise preferred skirt seam placement.

NAPKINS & TABLECLOTHS

Please call for pricing and availability of napkins & tablecloths.



HOSPITALITY ACCESSORY COVERS



Tray Stand Covers

	1-6	7-11	12+
Up to 32" Height	\$46	\$43	\$39.50
32"-36" Height	\$60	N/A	N/A
Over 36" Height	\$55	\$51	\$47.50

Tray Stand dimensions required.
XpressScan printing available.
Call for pricing.
Image Area: 13"W x 5"H



Beverage Dispenser Covers

	1-6	7-11	12+
2.5 or 5.0 Gallon	\$53	\$48	\$43
10 Gallon	\$69	\$63	\$56

Dispenser manufacturer and model required.
XpressScan printing available. Call for pricing.
Image Area: 8"W x 6"H (One Color)



Bus Tub Covers

	1-29
Twill	\$57
Stretch	\$59

Fits 15" x 20" x 7" bus tub.
Call for other sizes or volume discounts.



Trash Can Covers

	Fabric	1	5	10	12
10 Gallon	Super Stretch	\$144	\$41	\$28	N/A
	Twill	\$92	N/A	N/A	\$81
20 Gallon	Super Stretch	\$153	\$53	\$40	N/A
	Twill	\$92	N/A	N/A	\$81
32 Gallon	Super Stretch	\$162	\$64	\$49	N/A
	Twill	\$97	N/A	N/A	\$85.50
44 Gallon	Super Stretch	\$169	\$73	\$58	N/A
	Twill	\$97	N/A	N/A	\$85
55 Gallon	Super Stretch	\$195	\$86	\$67	N/A

XpressScan printing available. Call for pricing.
Image Area: 13"W x 5"H (One Color)

Tray Covers

14" Round - Twill	\$39
27" x 22" Oval - Stretch	\$77

Tray Covers are fully printable with our RasterPrint process.
Call for pricing.



See page 35 for available fabric colors

CASES & BAGS



Expandable Shipping Cases

Small

26" x 24" x 13-15" Inside Dimensions
28" x 27" x 13.5" Outside Dimensions
Holds fabric drape panels. \$461

Medium

39.25" x 26" x 8-10" Inside Dimensions
43" x 28" x 13.5" Outside Dimensions
Holds 2 Standard Height Director Chairs, or (10) 16' Drape Panels \$564

Large

47" x 26" x 8-10" Inside Dimensions
51" x 28" x 13.5" Outside Dimensions
Holds 2 Counter Height Director Chairs, or (12) 16' Drape Panels \$697



Wacky Pak™ Case

Case Size

Small Wacky Pak	59"L x 10"OD	\$290
Large Wacky Pak	75"L x 10"OD	\$300
Extra Large Wacky Pak	126"L x 10"OD	\$358

Small & Large Wacky Paks are designed to fit our Ascend™ Retractable Graphic System
Extra Large Wacky Pak is designed to fit Upright and Crossbar hardware



Tent Hard-Side Storage Case

10.23" x 10.23" x 63" \$185

- Grey with easy-glide wheels
- Custom made to fit 10'x10' Square frame tent with Canopy attached!
- Heavy duty zippers and pulls



Carpetbagger™

Carpet Size

10'4" x 10"D	10' x 10'	\$164
10'4" x 15"D	10' x 20'	\$164
10'4" x 19"D	10' x 30'	\$183
10'4" x 25"D	10' x 40'	\$327
12'4" x 16"D	12' x 20'	\$220
12'4" x 19"D	12' x 30'	\$229

Requires 2 bags for carpet and pad, or next largest Carpetbagger™ if rolled together.



Tote Bags

Bag Size

Small Tote Bag	22" x 14" x 11"D	\$53
	10"D x 38"	\$92
Large Tote Bag	10"D x 50"	\$114
	10"D x 63"	\$120



Hard Travel Case

Case Size

Small	44.88" x 14.96" x 8" Inner Dimension 46.46" x 15.75" x 8.66" Outer Dimension	\$594
Large	44.88" x 14.96" x 12" Inner Dimension 46.46" x 15.75" x 12.5" Outer Dimension	\$896

Small Case holds: (1) 3' LUMA II, OR (2) LUMA II Mini
Large Case holds: (2) 3' LUMA II, (1) 8' LUMA II, (1) 10' LUMA II, OR (4) LUMA II Mini



ORDERING INFORMATION

Submitting Artwork

- See our detailed "artwork requirements" below.
- Small files (10 MB or less) can be sent via e-mail
- Large files can also be sent on DVD or CD
- You will receive a layout from our art department within one business day via e-mail.
If you do not receive this layout, contact us immediately.



Artwork Requirements

Xpress Scan & Silk Screen:

- Requires Vector art in an Adobe Illustrator compatible format (AI, EPS, or PDF).
- Cannot be too detailed or intricate. No gradients or halftones. See page 34 for available Xpress Scan imprint colors.
- Silk Screen art must have PMS colors specified in the file or on the order.

Raster Print:

- Requires Vector or Raster art in an Adobe Illustrator or Adobe Photoshop compatible format (AI, EPS, PDF, PSD, or TIFF).
- Must be no less than 100dpi at final print size.
- CMYK or RGB colors are acceptable although PMS colors are preferred.
- PMS color matching is **not** exact. We will match as closely as possible. For best results provide a physical color sample.

Turnaround Times

- Unprinted products: ship within 3 business days of the receipt of your order.
- Imprinted products: ship within 5 business days of the receipt of your approved layout.
- Unsuitable artwork and delays in your approval of our layout will result in delayed shipping.
- Large quantities, custom dyes, and custom manufactured products may take longer.



Return Policy

- All orders are custom and non-cancellable after the start of production.
- Certain unused hardware and portable display accessories may be accepted for return within 30 days of purchase and after receiving a return authorization.
- A 15% restocking fee will apply to all returns.

Terms & Conditions

- To place an order you must have an active credit account, prepay, or supply a credit card number (Amex, MC, Visa only). No COD shipments.
New accounts should prepay or use a credit card as credit application process may take approximately 30 days.
- All prices in U.S. Dollars. Prices subject to change without notice.

Disclaimer:

- Pricing contained herein is accurate at the time of printing. While making every effort to keep pricing current, please understand that all pricing is subject to change (increase and/or decrease) without notice. Please visit our website for the most current pricing. Where a discrepancy is noted between our printed price and pricing listed on our website, the website pricing shall prevail with the exception of items that have been specially quoted in writing.
- Some items featured in our catalogs may not always be available for immediate local pick-up. Items shipped to our factory/showroom at your request for local pick-up may still incur freight charges. We will be happy to provide a freight quote in advance of ordering upon request.
- Unless specifically noted, quotes are only valid for 60 days.
- Freight is not included on quotes or orders and will be added at time of shipment unless otherwise indicated.
- Freight quotes are available upon request and are approximate. Actual freight is computed and charged when order ships and may differ from the estimate.

IMPRINT METHODS



RasterPrint™

RasterPrint is a dye-sublimation process that yields photographic images on fabric. With this process, the image becomes molecularly bonded to the fabric so it can be washed without fading the image. We can use the RasterPrint process with virtually any of our fabric products. Banners, backdrops, murals, Throw Covers...the possibilities are endless. In addition to using RasterPrint for photographic images, many of our clients have found it a cost effective way to print multi-colored logos on our Throw Covers or other products. Because RasterPrint has no set-up charge, you can produce your logo on a small number of units and spare yourself the multiple set-up charges of screen print.



Silk Screen

Screen Printing is the best option if your logo requires an exact color match, contains fine detail (like small dot patterns), or if you require more than 30 pieces (the limit of our Xpress Scan imprint process). Silk Screen was our original imprint method when we started business over 40 years ago, and we've been doing it longer than anyone in the industry. There's virtually no job we cannot handle.



Xpress Scan™

Xpress Scan is the original heat-applique imprint process in the Trade Show Exhibit industry. This process utilizes a software operated cutter to cut your graphic from a vinyl heat transfer media. From there the image is prepared and bonded to any of our fabric products using extreme heat and high pressure. The resulting image can be machine washed and will not crack or peel (guaranteed). Xpress Scan is the best imprint option when you do not have a custom color to match and are dealing with 30 or fewer pieces. If you require a higher quantity, need to match a color exactly, or your graphic is highly detailed, we recommend either our Silk Screen or RasterPrint processes.

See page 35 for Xpress Scan imprint colors.

FABRIC TYPES



Twill

Twill is our most popular fabric with the broadest color palette we offer. Very flexible for a multitude of applications. White Twill is the default fabric used for our RasterPrint™ process.

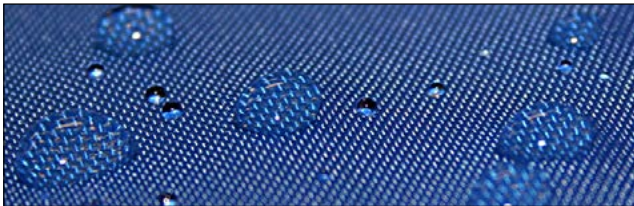
- 100% Polyester
 - 12 oz (per sq yard).
 - Flame Retardant (NFPA 701, CA)
 - Machine Washable
- Dye lots may vary



Stretch

Just as the name implies, our stretch fabric is highly elastic and therefore unique in its ability to form to whatever it covers. This fabric is primarily used for table or AV equipment covers.

- 100% Polyester
- 8 oz. (per sq yard)
- Flame Retardant (NFPA 701, CA)
- Machine Washable (see Care Instructions)
- Dye lots may vary
- Custom colors available with increased lead time



Dura™

Dura™ is a woven material with the flexibility and feel of fabric, and the resiliency and repellent qualities of vinyl. Like fabric it can be sewn, pleated, washed, and even imprinted. Like vinyl it is water, oil, grease, and even bleach resistant. We can manufacture throw covers, runners, toppers, skirting, accessory covers and more using Dura. Use Dura to cover tables at your next outdoor event, or when you want a wipeable cover that's easy to clean.

- 100% Nylon
- Water, oil, and grease repellent
- NOT Flame Retardant
- Machine Washable (see Care Instructions)
- Dye lots may vary



Cameo

A rich sueded fabric for applications that require an extra aire of elegance.

- 100% Polyester
- 7.5 oz. (per sq yard)
- Flame Retardant (NFPA 701, CA)
- Machine Washable (see Care Instructions)
- Dye lots may vary
- Custom colors available with increased lead time



Satin

This shiny, silk-like satin is 100% polyester so it stands up to repeated use.

- 100% Polyester
- 10 oz. (per sq yard)
- Flame Retardant (NFPA 701, CA)
- Machine Washable (see Care Instructions)
- Dye lots may vary
- Custom colors available with increased lead time



Luster

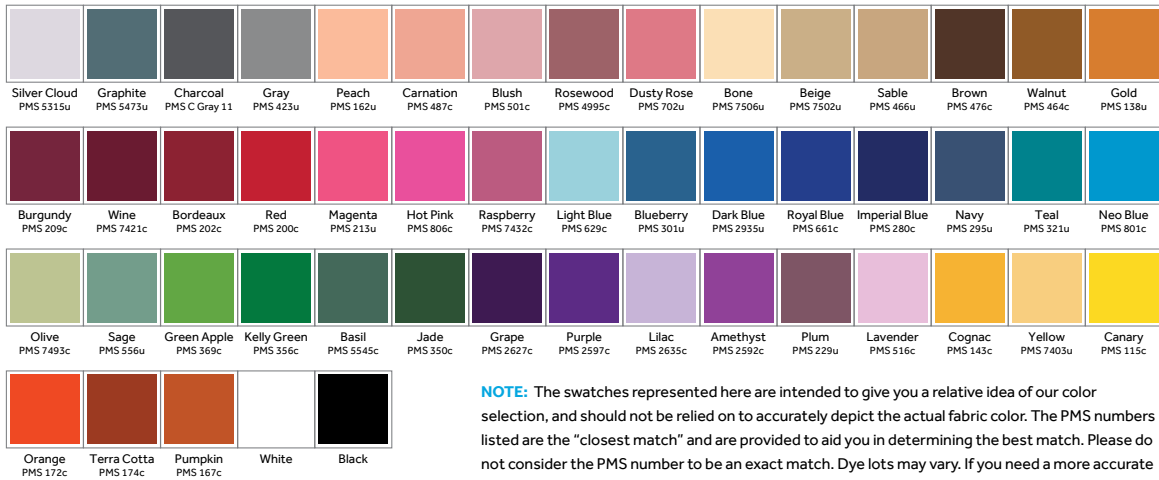
A luxurious fabric with a beautiful sheen and texture for added sophistication.

- 100% Polyester
- 12 oz. (per sq yard)
- Flame Retardant (NFPA 701, CA)
- Machine Washable (see Care Instructions)
- Dye lots may vary
- Custom colors available with increased lead time

FABRIC COLORS

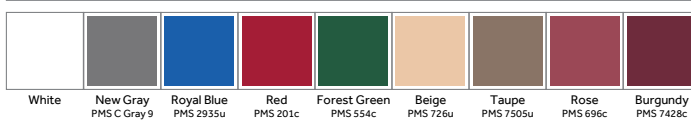
- All fabrics, excluding DURA™, are flame retardant and meets FR Code 701.
- Custom dye lots available for minimal order and additional lead time.
- Dye lots will vary.

Twill

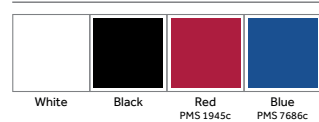


NOTE: The swatches represented here are intended to give you a relative idea of our color selection, and should not be relied on to accurately depict the actual fabric color. The PMS numbers listed are the "closest match" and are provided to aid you in determining the best match. Please do not consider the PMS number to be an exact match. Dye lots may vary. If you need a more accurate color depiction, contact us and we'll send you an actual fabric sample swatch.

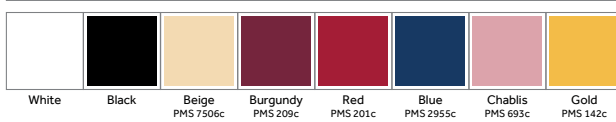
Cameo



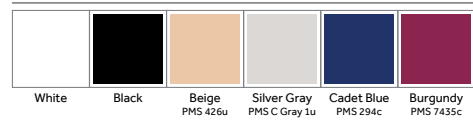
DURA



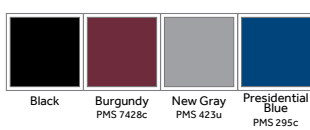
Satin



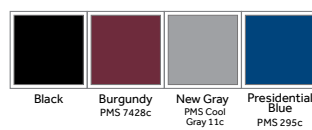
Luster



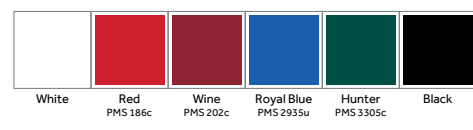
Cotton Velour



Poly Velour



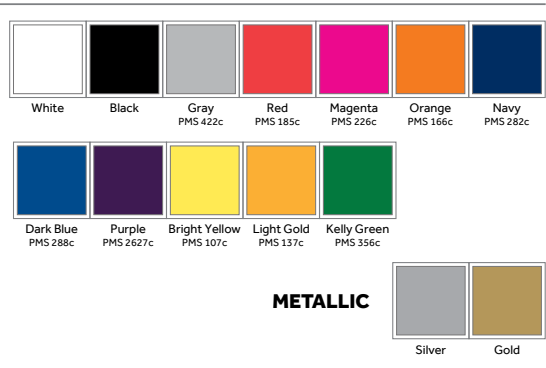
Stretch



XPRESS SCAN IMPRINT COLORS

GLOSSY

TEXTURED





© Copyright 2024. All rights reserved.

"Velcro" is a registered trademark of Velcro Industries B.V. "CATCHBOX" and "CATCHBOX Pro" are registered trademarks of Trick Technologies OY, ESPOO 02150

2404A