



Field Guide

Marine Animals of the Intertidal zone

Harshal Karve, Marine Biologist

Sea shells

Sea shells or Shelled gastropods are very common and abundant group of animals. The animal is protected by shell. There variety of sea shells which are further categorized into various groups based on their morphology and internal anatomy.



Radiate limpet

Cellana radiata
रेडिएट लिंपेट



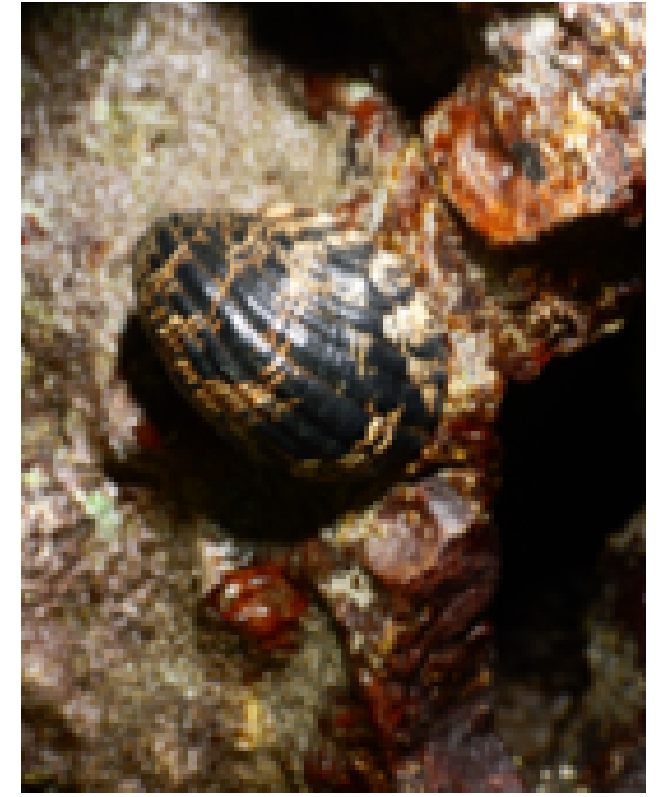
Periwinkle

Echinolittorina leucostica
पेरीव्हींकल



Periwinkle

Echinolittorina malaccana
पेरीव्हींकल



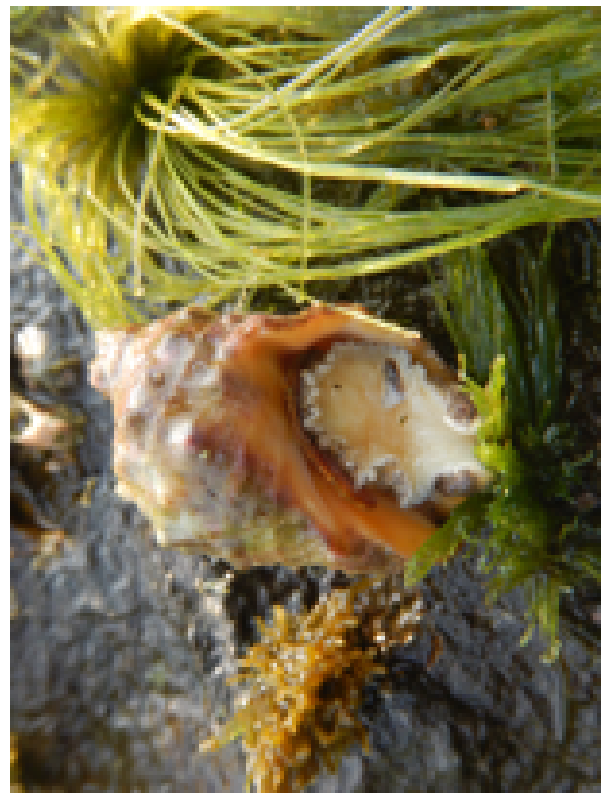
Nerite snail

Nerita sp.
नेरिटा स्नेल



Frog shell

Bursa granularis
फ्रॉग शेल



Rock shell

Mancinella alouina
रॉक शेल



Indian Tibia

Tibia curta
इंडियन टीबीआ



Olive snail

Agaronia gibbosa
ऑलिव्ह स्नेल



Mud creeper

Telescopium telescopium
मड क्रीपर



Scabra periwinkle

Littoraria scabra
स्काब्रा पेरीव्हींकल



Pirenella Horn snail

Pirenella cingulata
पायरेनेला हॉर्न स्नेल

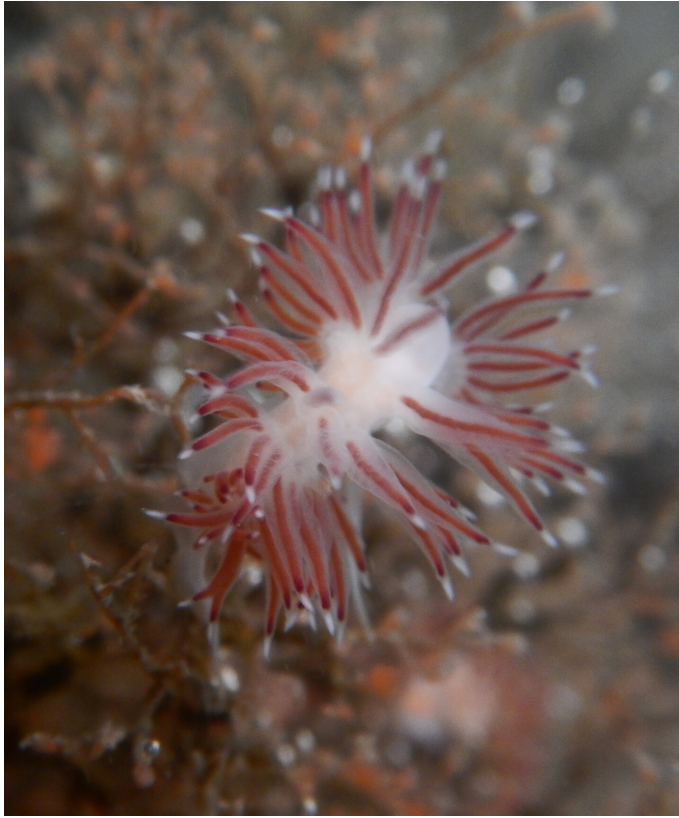


Nassa mud snail

Nassarius sp.
नासा मड स्नेल

Sea slugs

Sea slugs are gastropods or sea snails that over evolutionary time, have either completely lost their shells or it's reduced.



Cratena

Cratena sp.
क्रॅटेना स्लग



Bubble shell

Haloo sp.
बबल शेल



Okenia

Okenia sp.
ओकेनिया स्लग



Bombay sea slug

Goniobranchus bombayanus
बॉम्बे स्लग

Hermit crab

Hermit crabs have soft, spirally curved abdomen. They use shells of sea snails and clasp strongly onto the columella (internal part of the shell). As they grow, they change their shell and look for a bigger shell.

Porcelain crab

Porcelain crabs are not true crabs as they have flattened and delicate bodies.



Hermit crab

Clibanarius sp.
हर्मिट क्रॅब



Hermit crab

Calcinus sp.
हर्मिट क्रॅब



Porcelain crab

Petrolisthes boscii
पोरसीलेन क्रॅब

True crabs

True crabs are generally covered with hard exoskeleton and have a single pair of pincers/claws.



Mud crab/ Mangrove crab

Scylla sp.
मड क्रॅब/मॅन्ग्रोव्ह क्रॅब



Three spotted swimmer crab

Portunus sanguinolentus
थ्री स्पॉटेड स्विमर क्रॅब



Swimmer crab

Thalamita sp.
स्विमिंग क्रॅब

Sea anemones

Sea anemones are named after Anemone - a terrestrial flowering plant. Sea anemone has a mouth surrounded by tentacles.



Sea Anemone

paracondylactis sinensis
सी अनेमोने



Sea Anemone

Anthopleura dixoniana
सी अनेमोने



Anjuna Anemone

Anthopleura anjunae
अंजुना अनेमोने

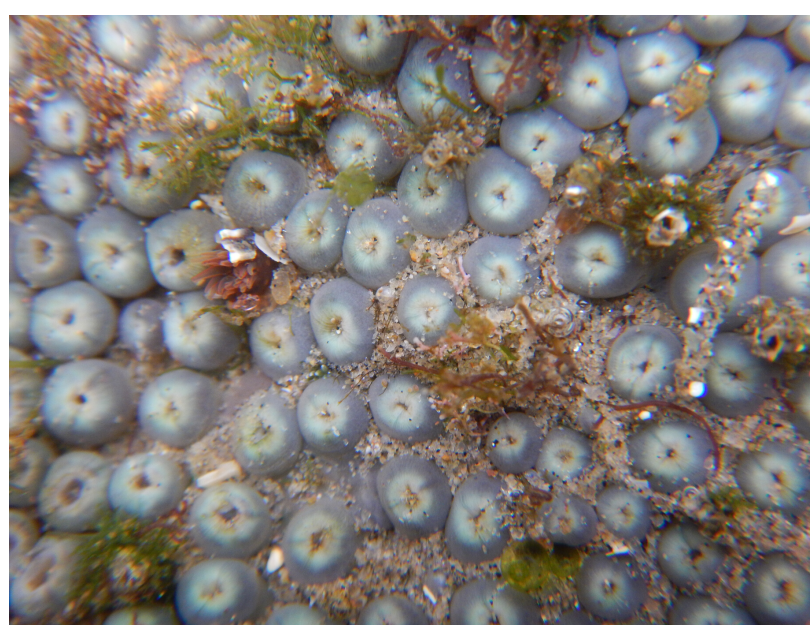
Zoanthids

Zoanthids are colonial animals under Hexacorallia which explains that organisms formed of polyps with six fold symmetry.



Zoanthid

Zoanthus sansibaricus
झूअँथीड



Zoanthid

Zoanthus sansibaricus (closed polyps)
झूअँथीड



Green button polyp

Palythoa mutuki
ग्रीन बटण पॉलीप

Hard Corals

Unlike other relatives (Cnidarians) they secrete calcium carbonate to form a hard skeleton.



Cup coral

Cladangia exusta
कप कोरल



Flowerpot coral

Goniopora sp.
फ्लॉवरपॉट कोरल



False pillow coral

Pseudosideratrea tayami
फॉल्स पिल्लोव कोरल

Sponges

Sponges are the organisms that have bodies full of pores and channels allowing water to flow through them.

