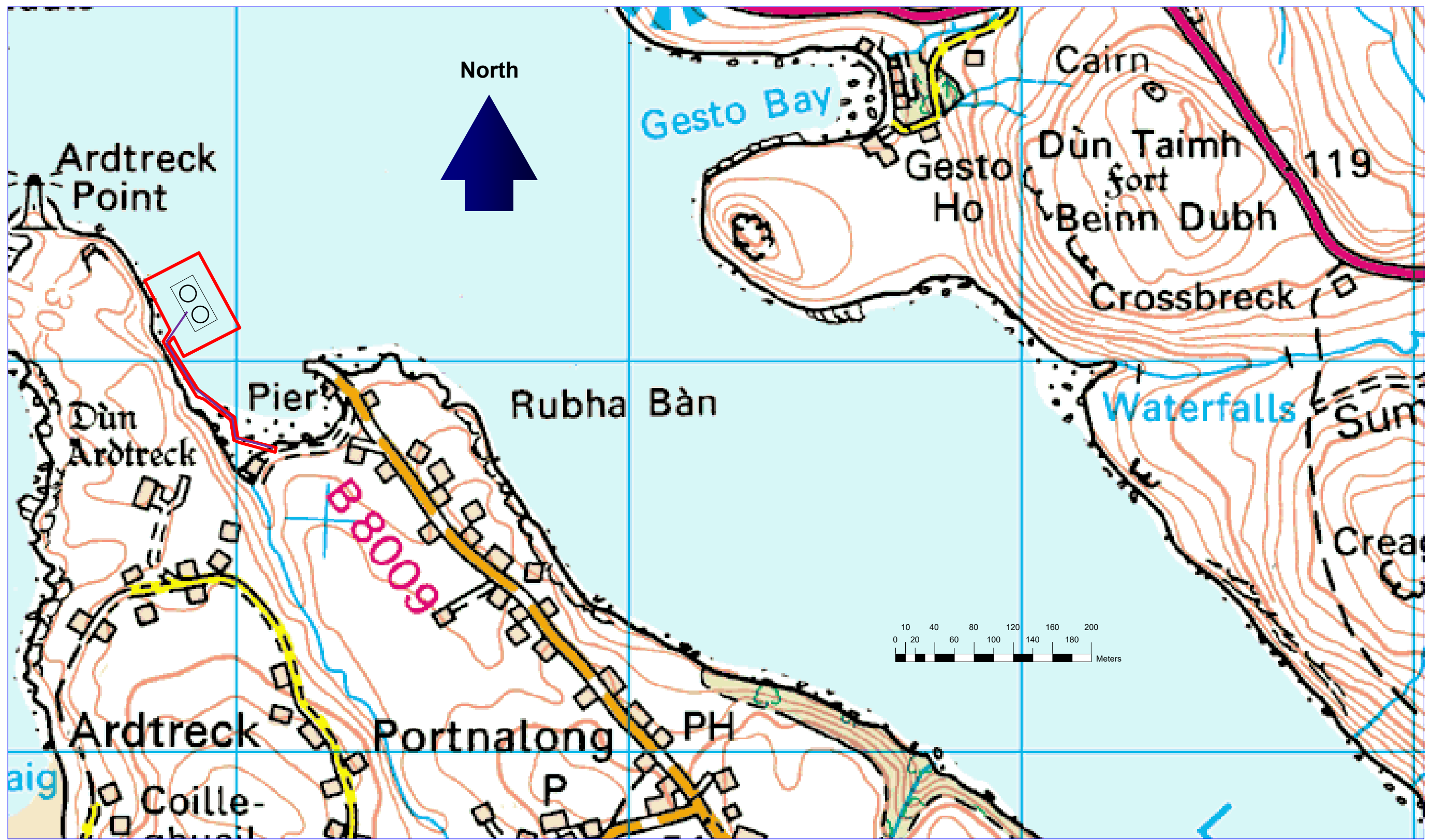
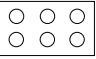

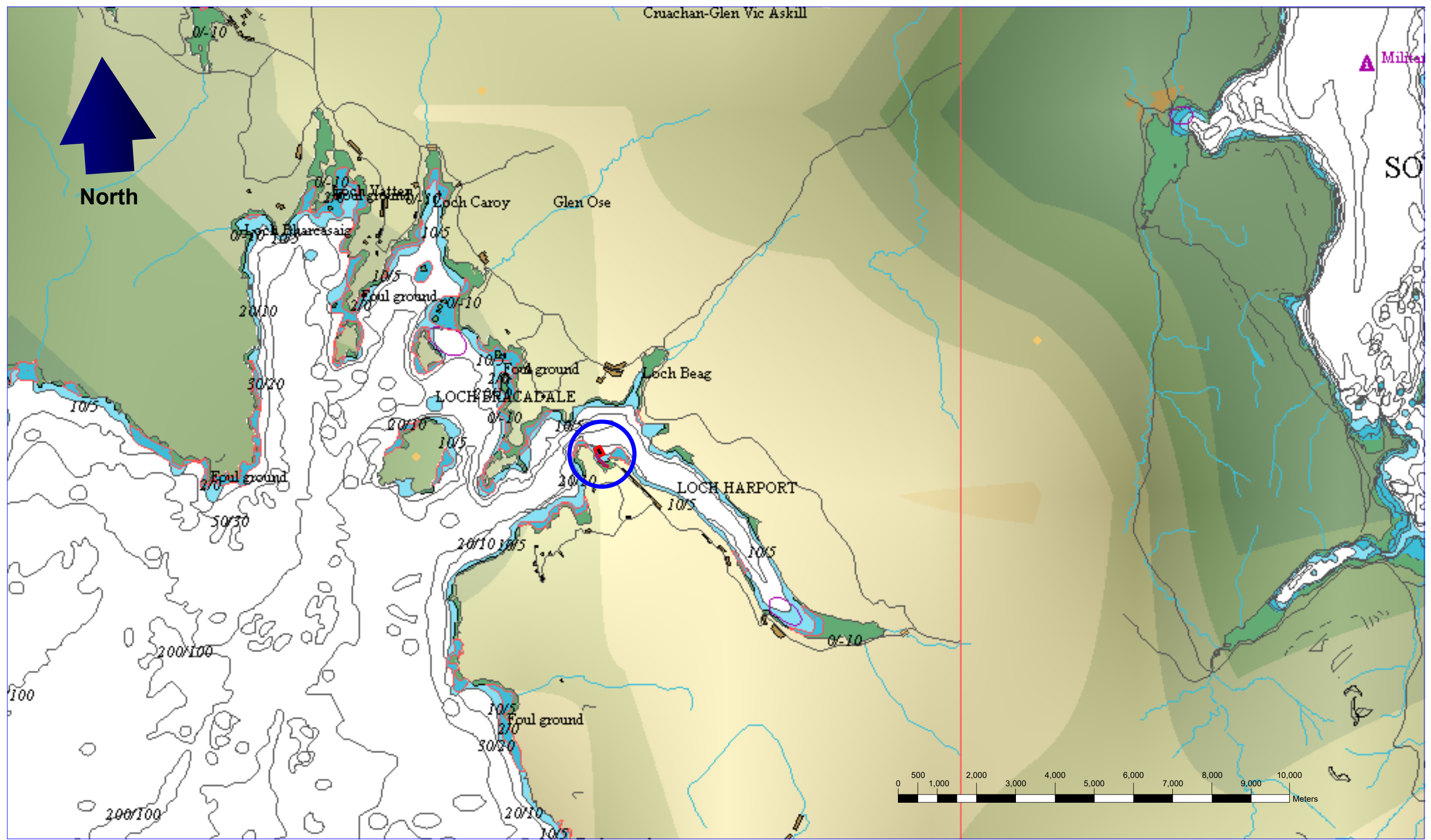


PORTNALONG: LOCH HARPORT, ISLE OF SKYE
GENERAL VIEW: ORDNANCE SURVEY MAP
Figure 1 General view and location of Loch Harport.

Key:	Not to scale	13/07/2022	LM	LM	0001	Final
	Scale	Date	Drawn	Checked	Revision No.	Status



PORTNALONG: ARDTRECK RESERVOIR PENS		Key:	 Cages	1:10,000	13/07/2022	LM	LM	0002	Final
LOCATION PLAN:ORDNANCE SURVEY MAP				Scale	Date	Drawn	Checked	Revision	Status
Figure 2	Detailed view of Portnalong proposal.	 Mooring Containment Area							

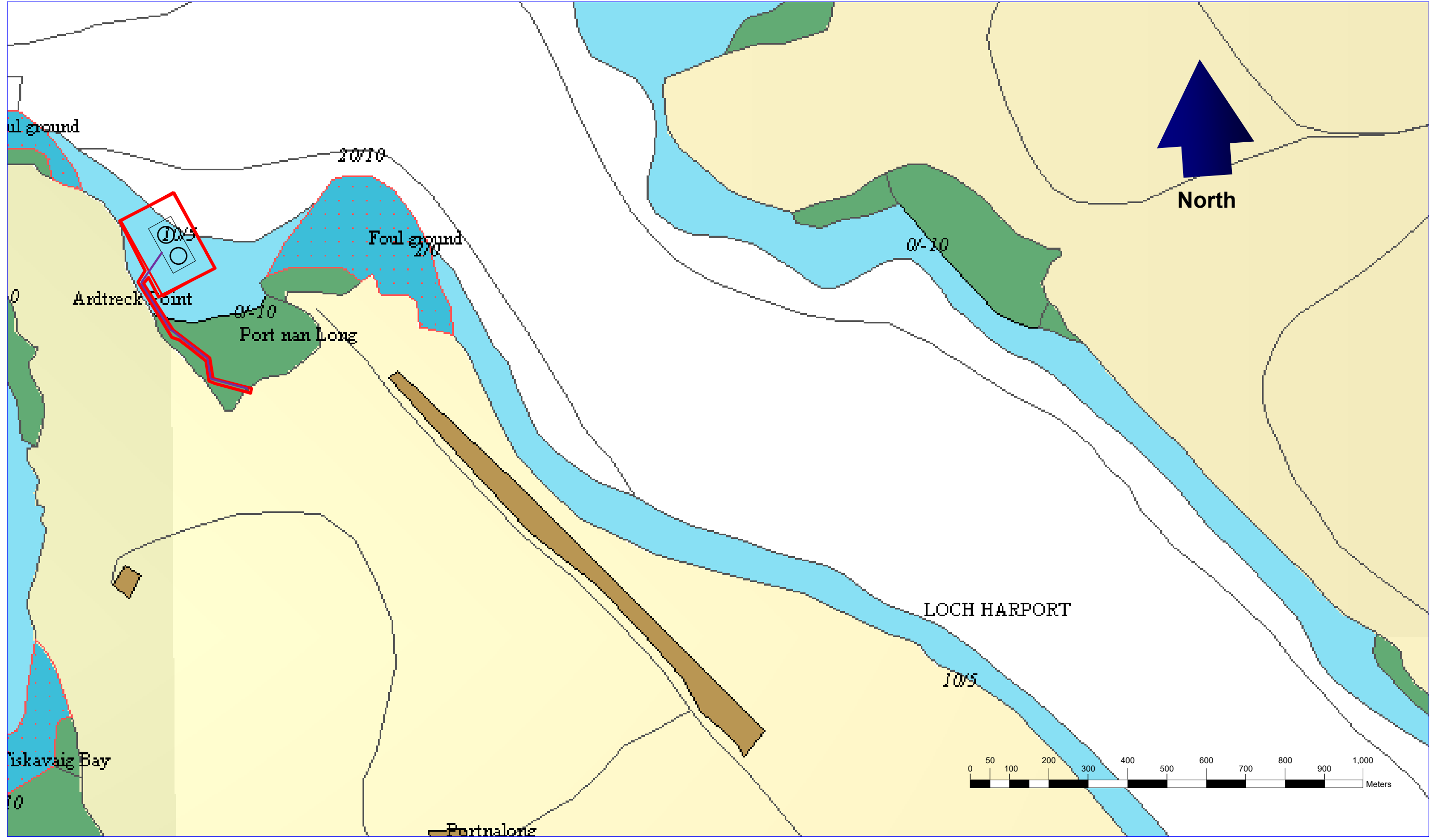


PORTNALONG: ARDTRECK RESERVOIR PENS
ADMIRALTY CHART EXTRACT OF SITE

Key:	 Site Location
------	---

1:100,000	13/07/2022	LM	LM	0003	Final
Scale	Date	Drawn	Checked	Revision No.	Status


Figure 3 General view of proposed area.

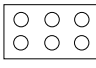


PORTNALONG: ARDTRECK RESERVOIR PENS
ADMIRALTY CHART EXTRACT OF SITE

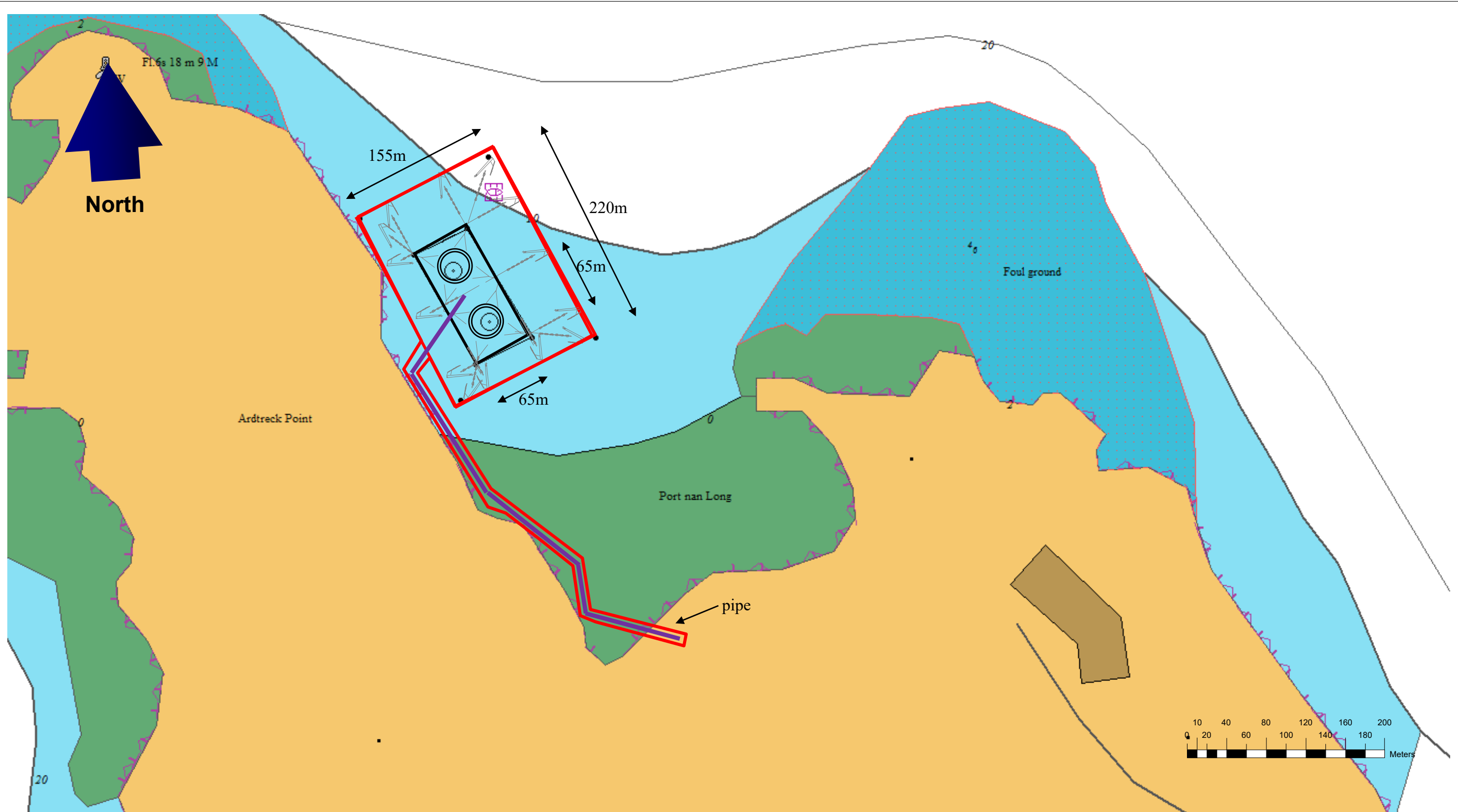
Figure 4 General view of Portnalong.
 Proposed cages and moorings.

Key:

 Mooring Containment Area

 Proposed Cages

1:10,000	13/07/2022	LM	LM	0003	Final
Scale	Date	Drawn	Checked	Revision	Status





PORTNALONG: ARDTRECK RESERVOIR PENS

SITE PLAN

Figure 5 Detailed illustration of cages and moorings. 2 circular plastic cages 100m circumference.

Key:

-  Mooring rope and anchor
-  Mooring Containment Area

1:4,000	13/07/2022	LM	LM	0003	Final
Scale	Date	Drawn	Checked	Revision	Status

Co-ordinates

Site Mid Coordinate

57° 20.253'N 006° 25.454'W

N836111 E133872

Cage Grid Co-ordinates

NE: 57° 20.289'N 006° 25.458'W

N836178 E133876

NW: 57° 20.274'N 006° 25.514'W

N836153 E133818

SE: 57° 20.227'N 006° 25.389'W

N836058 E133938

SW: 57° 20.212'N 006° 25.449'W

N836035 E133876

Mooring Co-ordinates

NE: 57° 20.330'N 006° 25.435'W

N836252 E133904

NW: 57° 20.295'N 006° 25.571'W

N836196 E133764

SE: 57° 20.228'N 006° 25.326'W

N836056 E134001

SW: 57° 20.194'N 006° 25.457'W

N836002 E133866

South End of Pipe

57° 20.068'N 006° 25.245'W

N835747 E134065