

The background of the slide is a close-up photograph of Sargassum horneri seaweed. The seaweed is a vibrant yellowish-brown color and has a complex, feathery structure with many small, branching, and lobed parts. The lighting is bright, highlighting the texture and color of the seaweed. The text is overlaid on this background.

SARGASSUM HORNERI
(= *S. FILICINUM*)
IN CALIFORNIA

JACK ENGLE
KATHY ANN MILLER
JESSIE ALTSTATT
modified by Lindsay Marks



Brown Algae
Order Fucales



Sargassum (solitary bladders)



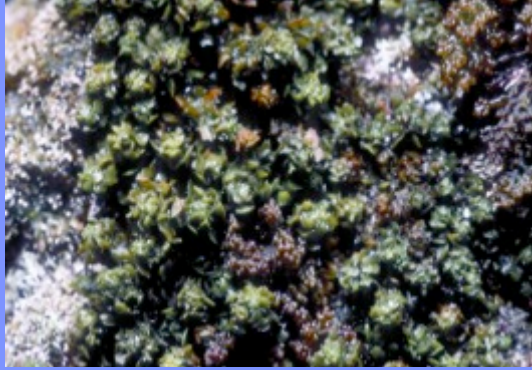
Cystoseira (chain bladders)



Halidrys (peapod bladders)

Native *Sargassum*

S. agardhianum
S. palmeri



Non-Native *Sargassum*

S. horneri
S. muticum



California

S. muticum *S. horneri* *S. palmeri*



Sargassum horneri (= *S. filicinum*)

S. filicinum form

- Monoecious (♀ and ♂)
- Bladders spherical or oval



S. horneri form

- Dioecious (♀ or ♂)
- Bladders cylindrical





Recruits



Young branch with symmetrical, pinnate (flat feather) shape and notched margins



Older axes have sharp spines
on stipes and branches



Immature plants with air bladders



Tall buoyant immature



Mature plants with reproductive receptacles



Fertile plants with receptacles exuding eggs



Deteriorating Plants



Senescent plants



Sargassum muticum

Recruit

Thin branches
radiating from
stipe



Mature

Oblong
conceptacles



Senescent



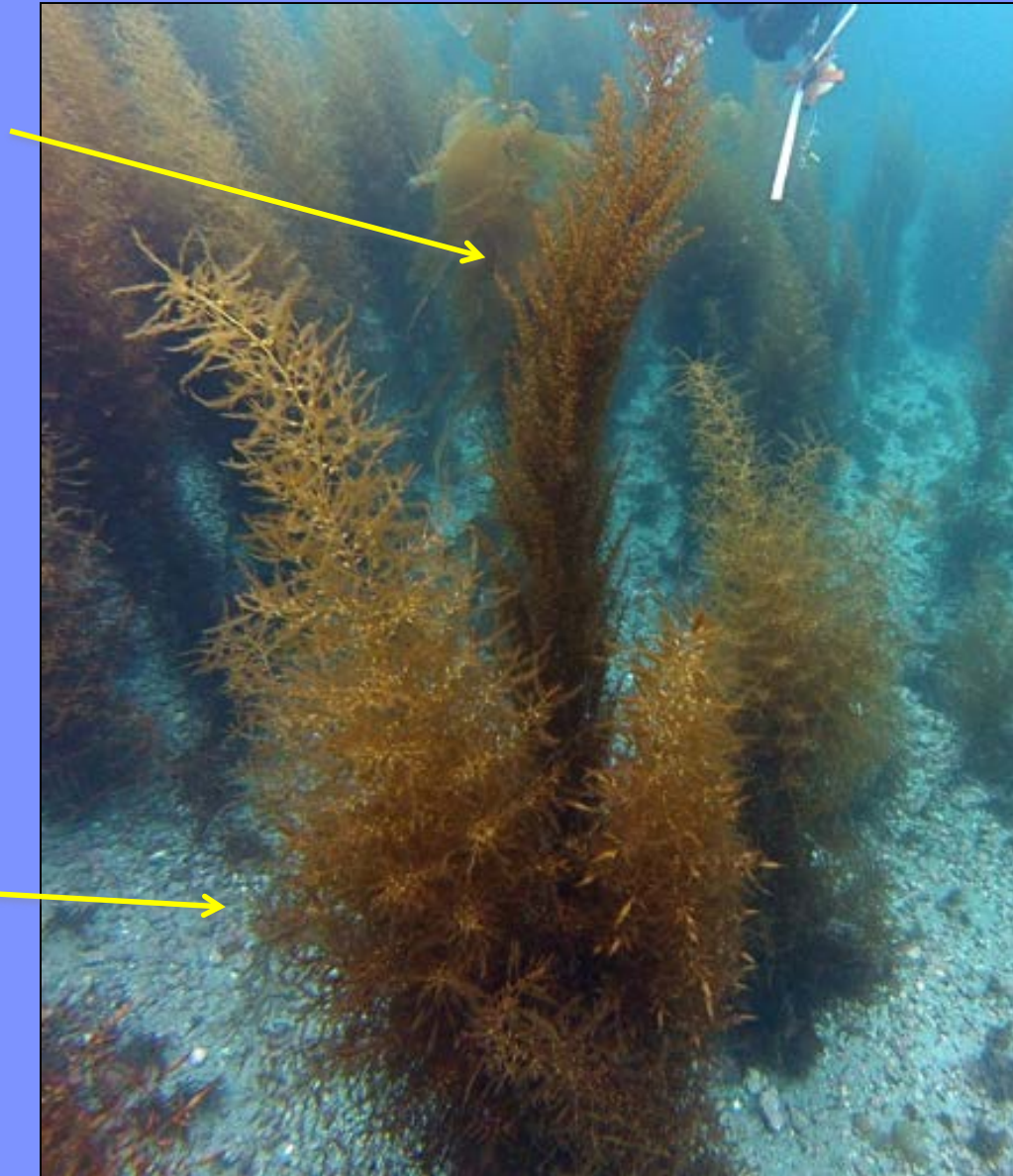
Immature

Cylindrical gas
bladders

Sargassum horneri vs. *muticum*

S. muticum

dense, compact
branches



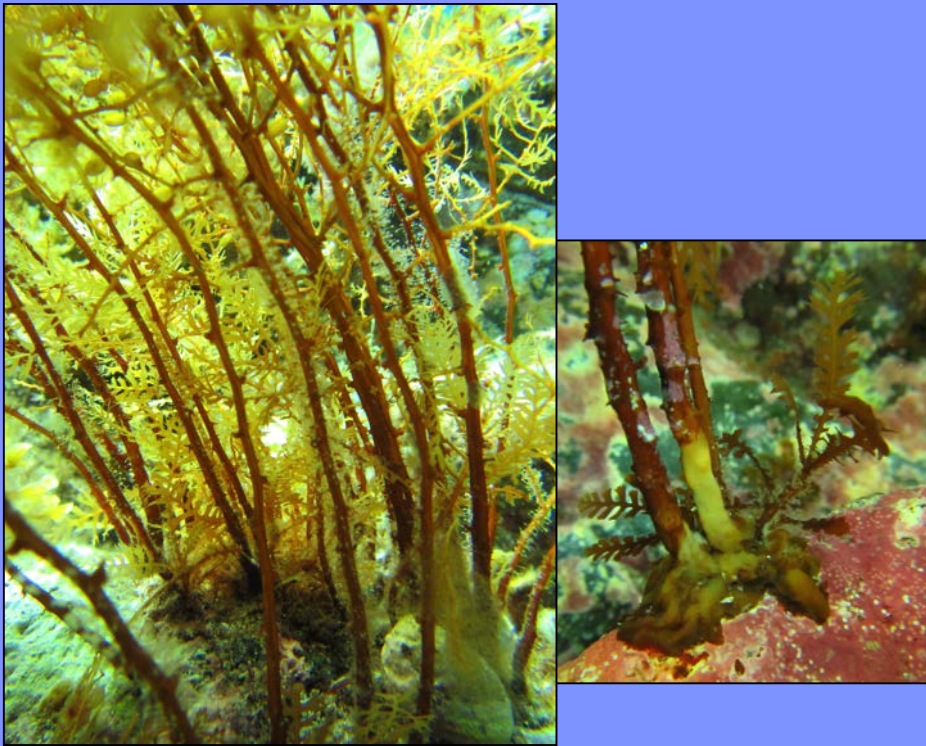
S. horneri

bushy, fluffy
branches

Sargassum horneri vs. *muticum*

holdfasts

S. horneri



One stipe per holdfast, but holdfasts can grow on top of one another

S. muticum



One or several stipes per holdfast