



Versatility, accuracy and control with the new PASCAL Precision System

Fabien Praz, MD
Bern University Hospital
Bern, Switzerland



Potential conflict of interest

I have the following potential conflicts of interest to report:

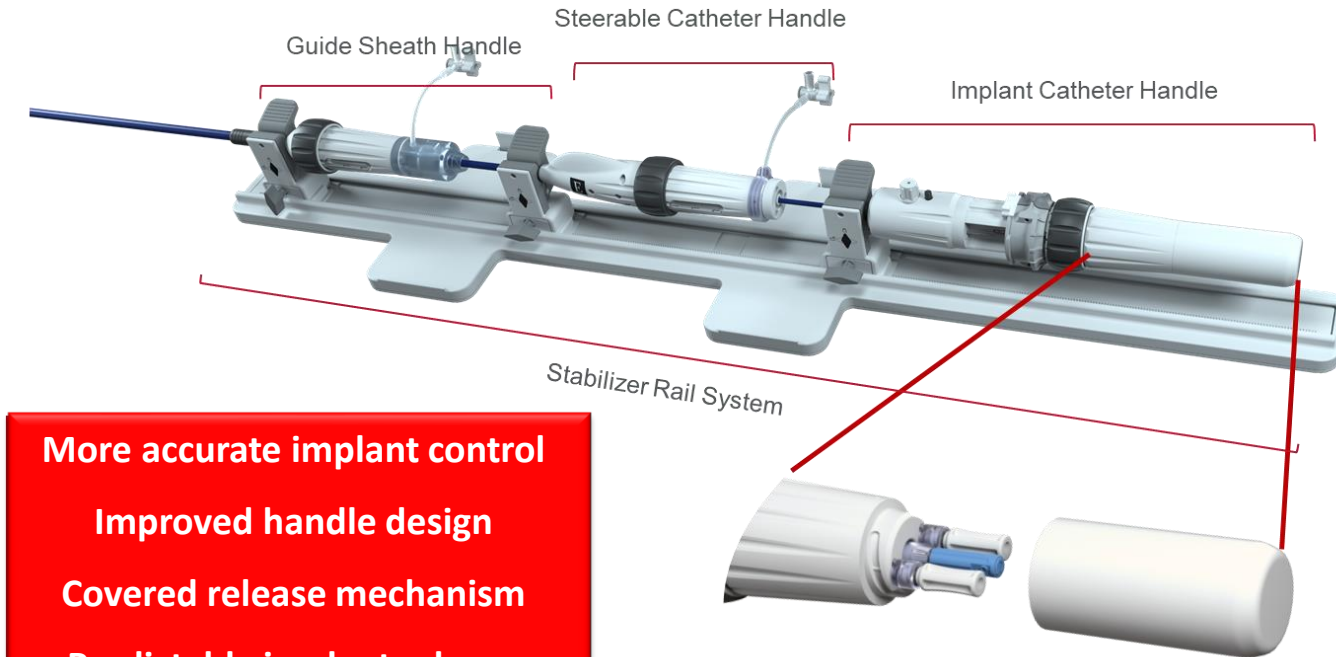
Travel expenses from Edwards Lifesciences, Abbott Vascular, Polares Medical, Medira, and Siemens Healthineer

Expert opinion disclaimer

- Expert opinions, advice and all other information expressed represent contributors' views and not necessarily those of Edwards Lifesciences.

PASCAL Precision Delivery System

22 French; 3 independent delivery catheters

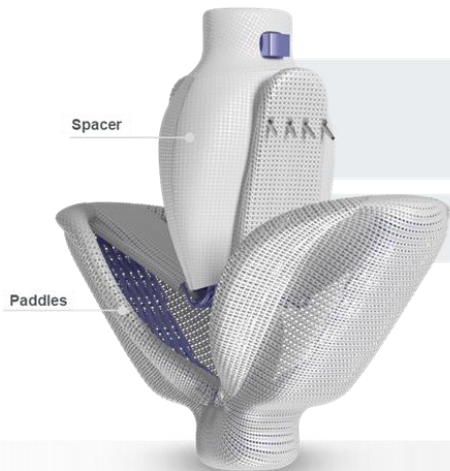


More accurate implant control
Improved handle design
Covered release mechanism
Predictable implant release

Expert opinions, advice and all other information expressed represent contributors' views and not necessarily those of Edwards Lifesciences.

PASCAL and PASCAL Ace implants

PASCAL Implant



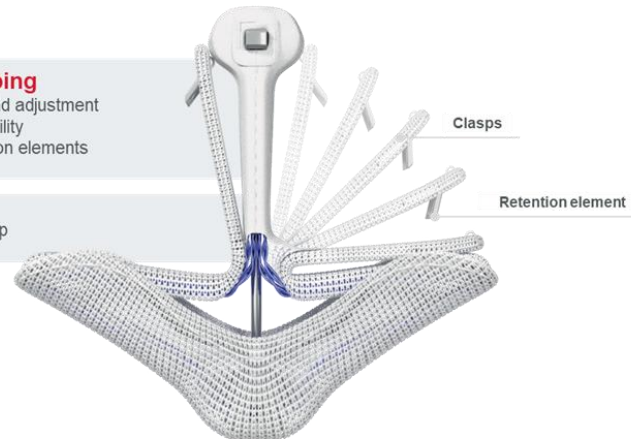
Independent grasping

- Staged leaflet capture and adjustment
- Clasp and reclip capability with single row of retention elements

Central spacer

- Bridge the coaptation gap

PASCAL Ace Implant



Nitinol construction

Passive closure,
acute implant flexing



Elongation

Navigate in dense chordae



Two Implants

PASCAL with broader contoured paddles and Ace with a narrow profile. Both with central spacer designed to provide multiple options for patients

5 mm spacer
10 mm width
26 mm wingspan

2 mm spacer
6 mm width
26 mm wingspan

Expert opinions, advice and all other information expressed represent contributors' views and not necessarily those of Edwards Lifesciences.

My experience with PASCAL Precision Repair System – Case example

77-year-old male

Heart transplant 1997 due to terminal ischaemic cardiomyopathy

Graft coronary artery disease with multiple angioplasties

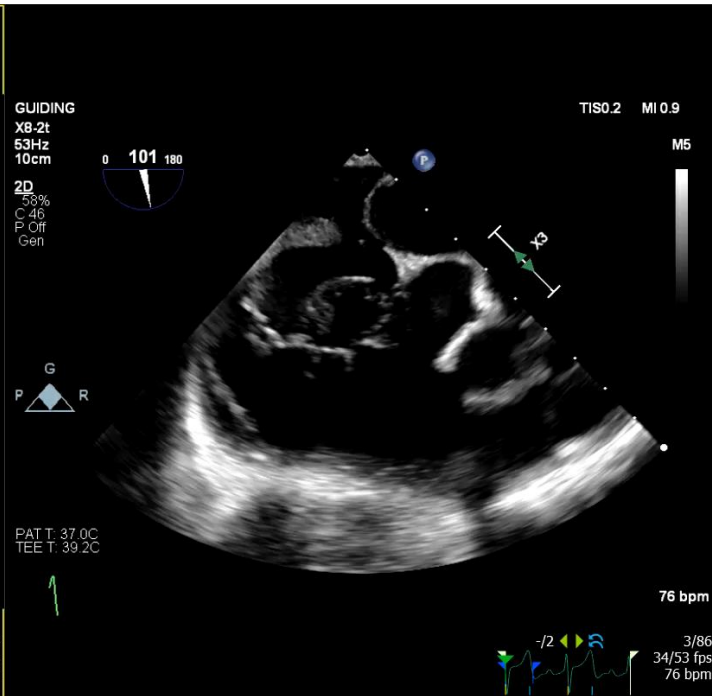
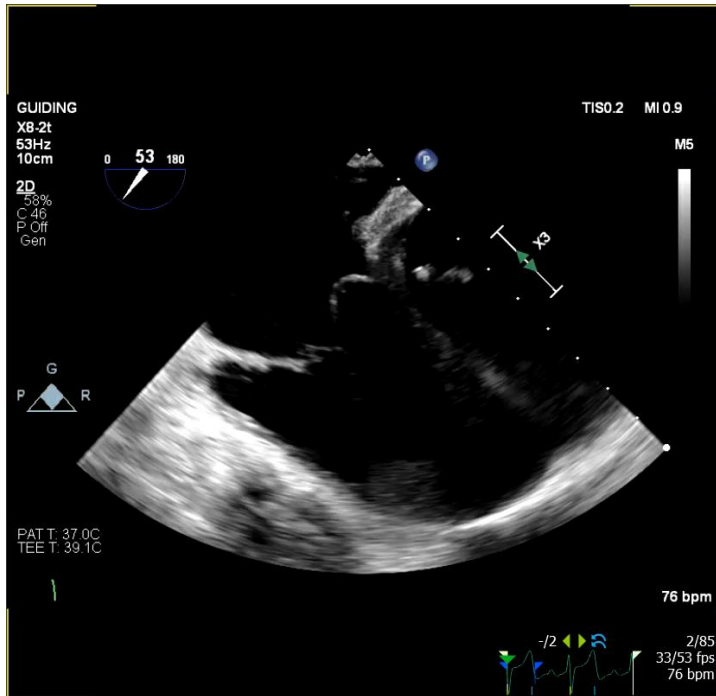
Severe primary tricuspid regurgitation (post biopsy) due to large flail of the septal leaflet (EROA 0.71cm²)

Hospitalisation because of right heart decompensation (08/22)

Chronic renal failure (GFR 44ml/min), Ascites

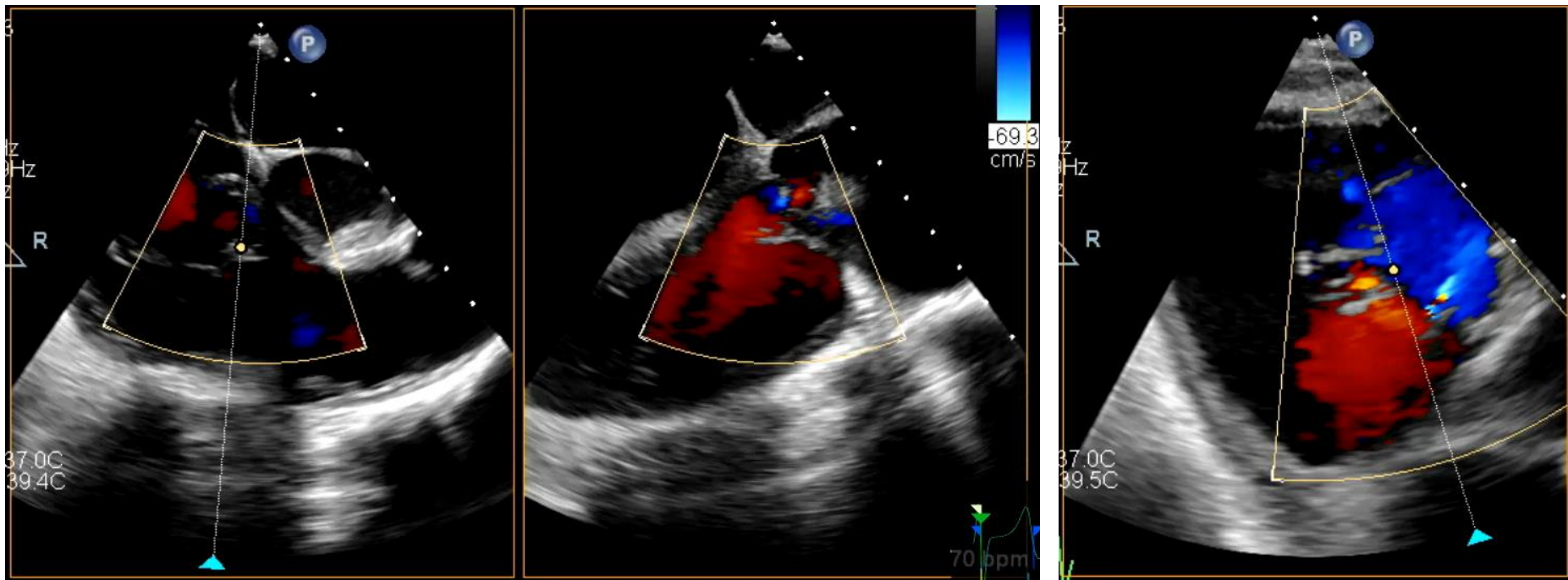
Expert opinions, advice and all other information expressed represent contributors' views and not necessarily those of Edwards Lifesciences.

Baseline tricuspid regurgitation



Expert opinions, advice and all other information expressed represent contributors' views and not necessarily those of Edwards Lifesciences.

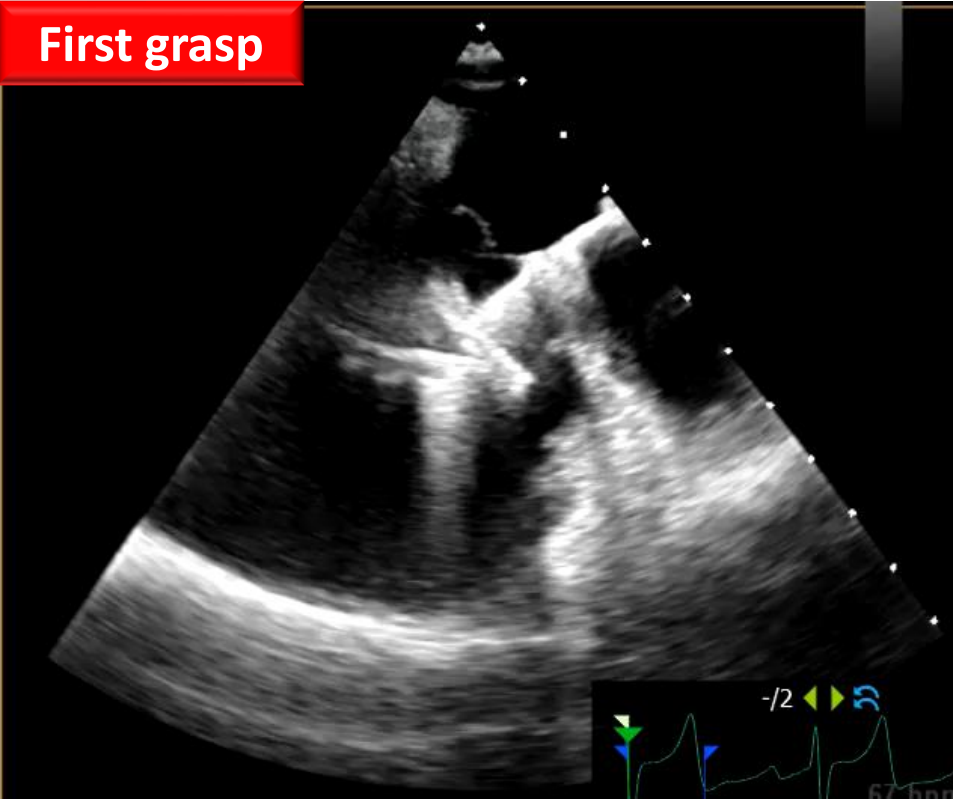
Baseline tricuspid regurgitation



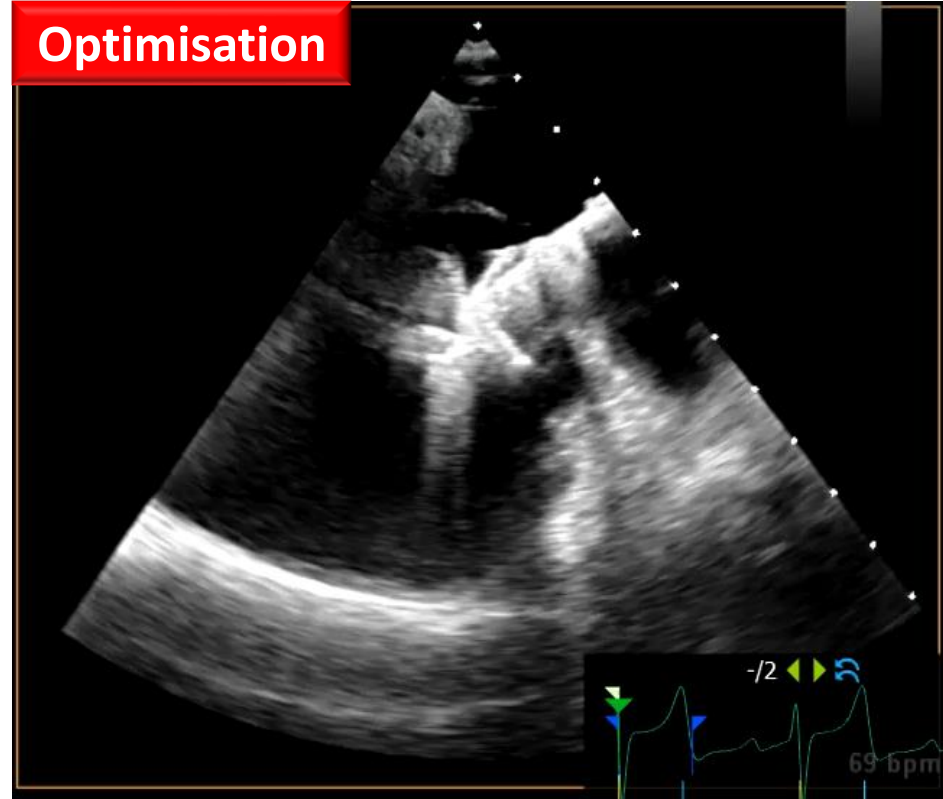
Expert opinions, advice and all other information expressed represent contributors' views and not necessarily those of Edwards Lifesciences.

First grasp and optimisation

First grasp

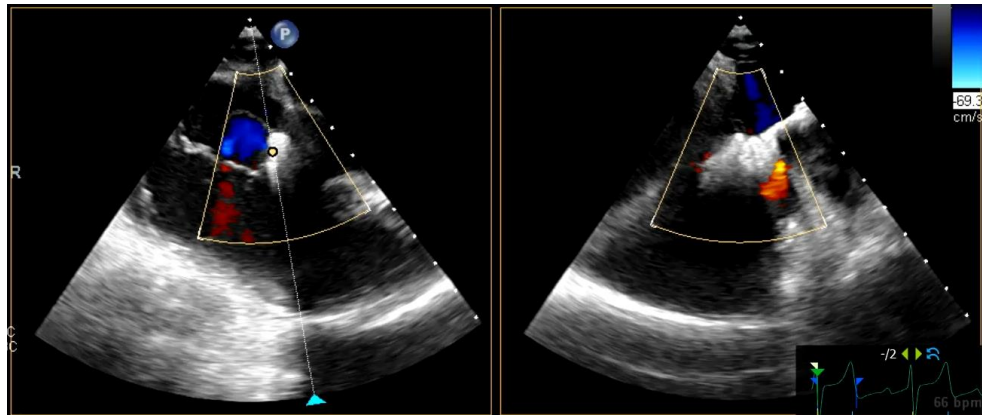


Optimisation



Expert opinions, advice and all other information expressed represent contributors' views and not necessarily those of Edwards Lifesciences.

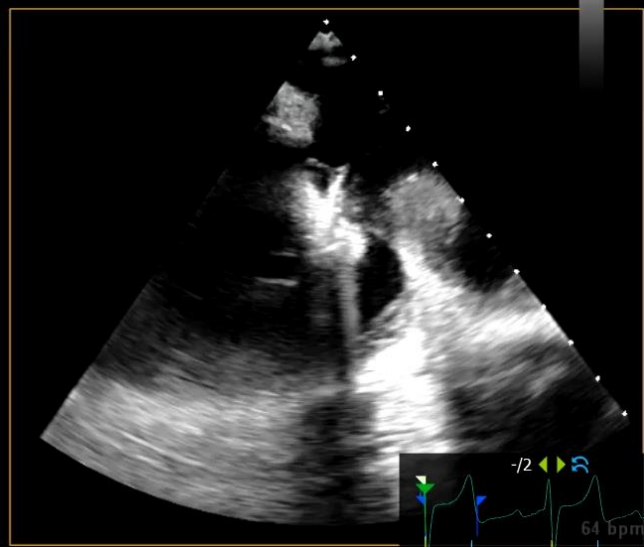
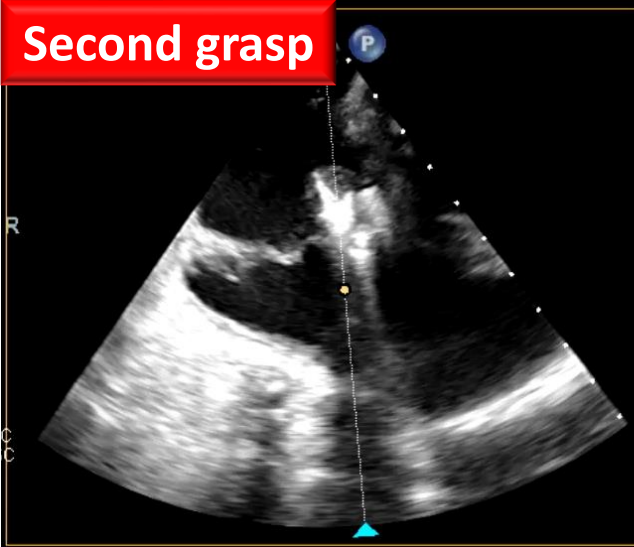
Result after first PASCAL Ace implant



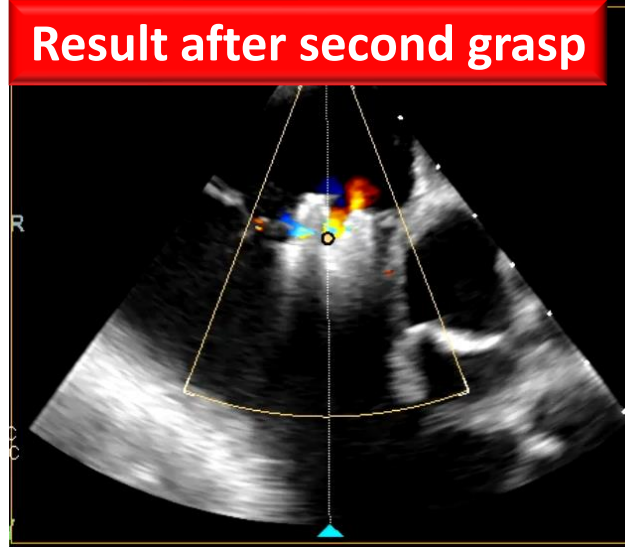
Expert opinions, advice and all other information expressed represent contributors' views and not necessarily those of Edwards Lifesciences.

Second PASCAL Ace implant

Second grasp

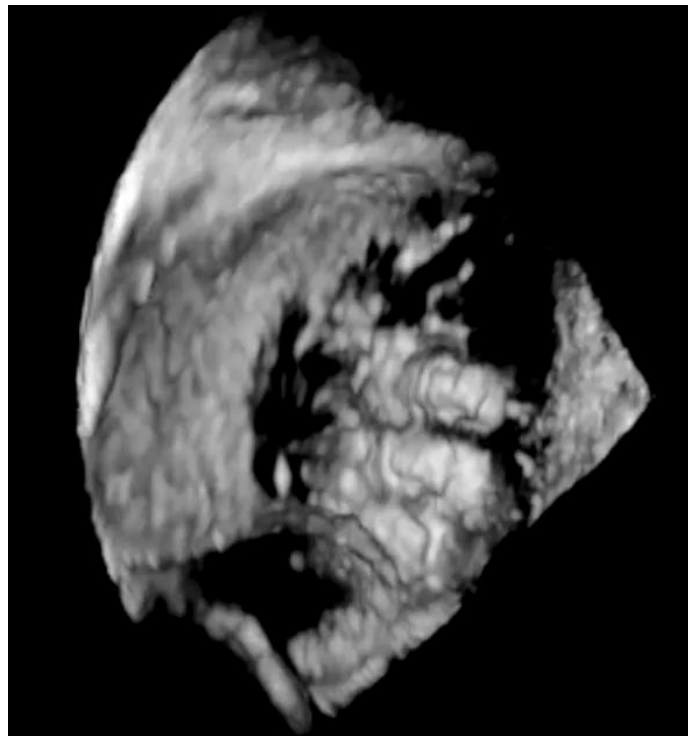
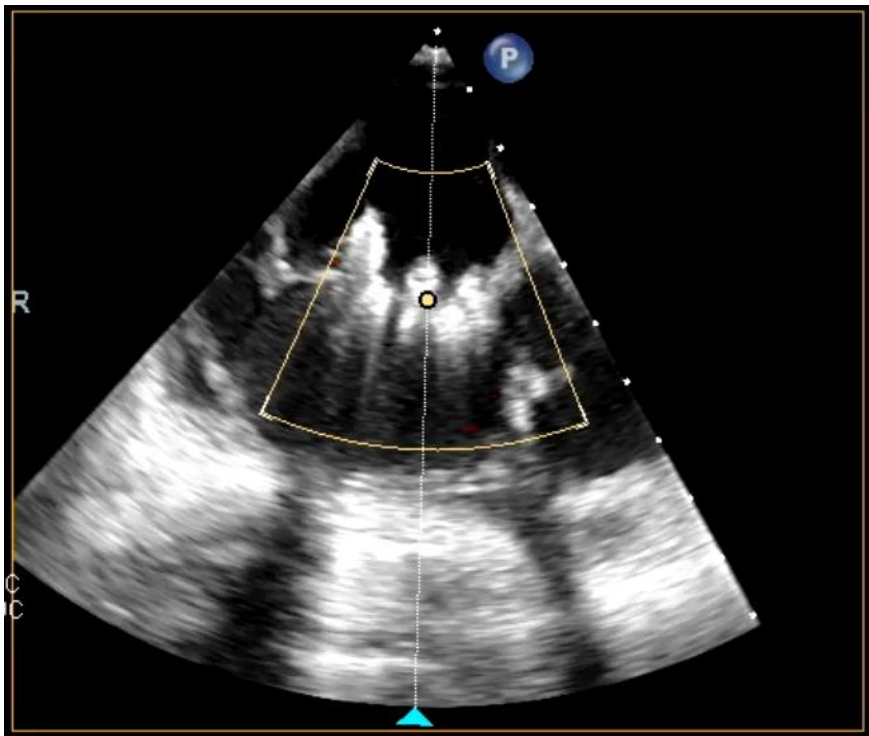


Result after second grasp



Expert opinions, advice and all other information expressed represent contributors' views and not necessarily those of Edwards Lifesciences.

Final result



Conclusions

Compared to previous iterations, the PASCAL Precision system offers improved catheter stability and steerability for treating the atrioventricular valves

The new handle design facilitates clasp actuation and device deployment

The nitinol implant design minimizes leaflet tension, particularly in patients with complex mitral valve anatomy, as well as for treating the tricuspid valve

Expert opinions, advice and all other information expressed represent contributors' views and not necessarily those of Edwards Lifesciences.

THANK YOU

Expert opinions, advice and all other information expressed represent contributors' views and not necessarily those of Edwards Lifesciences.

Medical device for professional use. For a listing of indications, contraindications, precautions, warnings, and potential adverse events, please refer to the Instructions for Use (consult eifu.edwards.com where applicable).

Edwards, Edwards Lifesciences, PASCAL Ace and PASCAL Precision are trademarks or service marks of Edwards Lifesciences Corporation. All other trademarks are the property of their respective owners.

© 2022 Edwards Lifesciences Corporation. All rights reserved. PP--EU-5450 v1.0

Edwards Lifesciences • Route de l'Etraz 70, 1260 Nyon, Switzerland • edwards.com

PCR

PCRONline.com