

## Wednesday Walk - Uriarra Road Reserve – 18 June 2014

It was a chilly, damp start with the fog but it cleared by the time we reached the high point for our morning tea. We saw a few plants on the way in of *Cryptandra amara* var *floribunda* - as it was known - in full flower but later, we were successful in our quest to find the hillside of it. By then it was warmer and we could smell the honey perfume. A lovely display. Just a few of the flowers were finishing and turning pink/red, as they do. There was also a good display of flowers on several *Solanum cinereum*, a few *Hibbertia obtusifolia* flowers, some *Xerochrysum viscosum* and a patch of *Wahlenbergia stricta* flowering. There was a good display of grasses flowering too - *Cymbopogon refractus*, *Echinopogon caesiptosus*, *Bothriochloa macra*, *Enneapogon nigricans* and a few *Poa sieberiana*. Other interesting plants were *Leucopogon attenuatus* just about to burst - some had a few flowers already open - *Stypandra glauca*, *Acacia implexa*, *Persoonia rigida* and *Leptospermum brevipes*. The new growth of saplings following the fire is quite astonishing with forests now where it used to be open woodland. It is a very worthwhile place. It would be nice if it could become recognised as such and gets formally made into a reserve.

**For the images below:** GRK = Gail Ritchie-Knight; JC = Janelle Chalker; JG = Jean Geue



Foggy start GRK



*Leptospermum brevipes* JG



Fog lifting JG



*Solenogyne dominii* JG



*Ophioglossum lusitanicum* JC



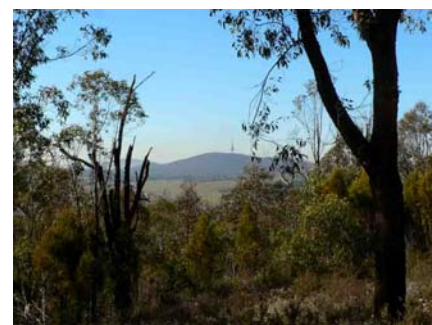
*Stuartina muelleri* JC



*Solanum cinereum* GRK



*Hibbertia obtusifolia* buds JG



View to Black Mountain JG



Hillside of *Cryptandra amara* var. *floribunda* JG



*Cryptandra amara* var. *floribunda* JG



Fading to pink JC



*Leucopogon attenuatus* JC



*Poa sieberiana* JG



*Kunzea ericoides* and web JG

## Plant List for Uriarra Road Reserve – 18 June 2014

? indicates that those present were unsure of the plant name

- |                                  |  |
|----------------------------------|--|
| Acacia buxifolia                 | Geranium sp.                           |
| Acacia gunnii                    | Glycine clandestina                    |
| Acacia implexa                   | Gompholobium huegelii                  |
| Acacia rubida                    | Gonocarpus tetragynus                  |
| Acaena ovina                     | Goodenia hederacea                     |
| Allocasuarina verticillata       | Hardenbergia violacea                  |
| Aristida ramosa                  | Hibbertia obtusifolia                  |
| Arthropodium minus               | Hovea heterophylla                     |
| Austrodanthonia carphoides       | Hydrocotyle laxiflora                  |
| Austrostipa densiflora           | Indigofera australis                   |
| Austrostipa scabra ssp. falcata  | Juncus sp.                             |
| Bothriochloa macra               | Kunzea ericoides                       |
| Brachyloma daphnoides            | Lepidosperma laterale                  |
| Cassinia longifolia              | Leptospermum brevipes                  |
| Cassinia quinquefaria            | Leptospermum multicaule                |
| Cheilanthes austrotenuifolia     | Leucopogon attenuatus                  |
| Convolvulus angustissimus        | Leucopogon fletcheri ssp. brevisepalus |
| Cryptandra amara var. floribunda | Lomandra filiformis ssp. coriacea      |
| Cymbonotus lawsonianus           | Lomandra filiformis ssp. filiformis    |
| Cymbopogon refractus             | Lomandra longifolia                    |
| Daucus glochidiatus              | Lomandra multiflora                    |
| Daviesia mimosoides              | Luzula densiflora                      |
| Desmodium varians                | Melichrus urceolatus                   |
| Dianella longifolia              | Microlaena stipoides                   |
| Dianella revoluta                | Ophioglossum lusitanicum               |
| Dillwynia phyllicoides           | Persoonia rigida                       |
| Dillwynia sericea                | Poa sieberiana                         |
| Echinopogon caespitosus          | Pultenaea procumbens                   |
| Einadia nutans                   | Rytidosperma pallidum                  |
| Enneapogon nigricans             | Senecio quadridentatus                 |
| Erodium crinitum                 | Senecio sp.                            |
| Eucalyptus blakelyi              | Solanum cinereum                       |
| Eucalyptus bridgesiana           | Solenogyne dominii                     |
| Eucalyptus goniocalyx            | Stuartina muelleri                     |
| Eucalyptus macrorhyncha          | Stypandra glauca                       |
| Eucalyptus nortonii              | Thelymitra sp.                         |
| Eucalyptus rossii                | Thysanotus patersonii                  |
| Exocarpos cupressiformis         | Tricoryne elatior                      |

*Triptilodiscus pygmaeus*  
*Viola betonicifolia*  
*Vittadinia muelleri*  
*Wahlenbergia stricta*  
*Wurmbea dioica*  
*Xerochrysum viscosum*