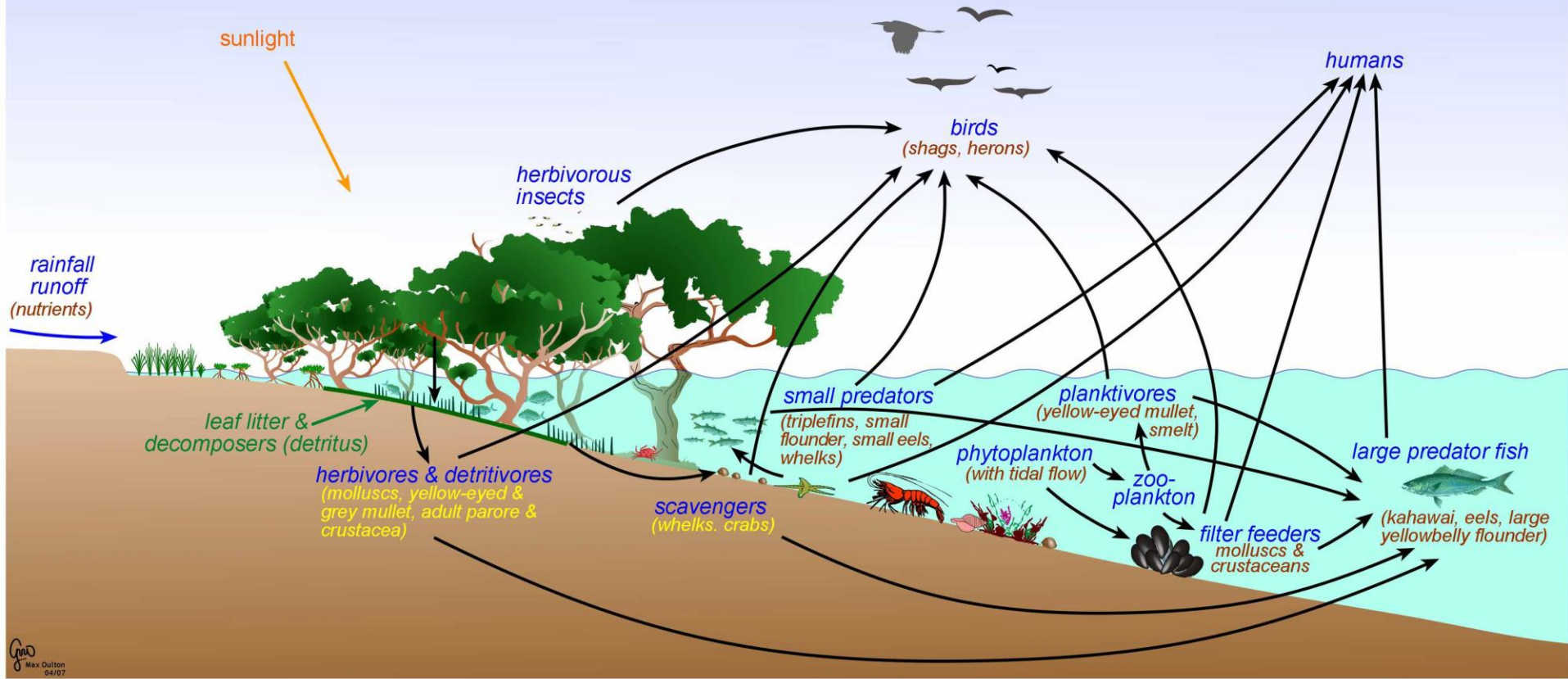


A photograph of a mangrove forest. The upper portion shows dense green foliage with broad, oval-shaped leaves. The lower portion shows a complex network of thick, brown, woody prop roots extending from the trees down into the water. The water is dark and reflects the surrounding environment.

Shell collecting in the Singapore mangroves

by Steve Hubrecht 2003-05

Mangrove Food Web

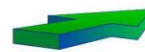


Sediments
Larvae
Adults
Phytoplankton

Flood



Ebb



Sediments
Detritus
Nutrients
Larvae

Worldwide mangrove areas













Birds living in the mangroves area













Geloina erosa
(Lightfoot in Solander,
1786)





Glaucanome rugosa
Reeve, 1843



Enigmonia
Aenigmatica
(Holten, 1803)

Austriella corrugata
(Deshayes, 1843)



Ellobium aurisjudae (L., 1758)



Ellobium aurismidae
(L., 1758)

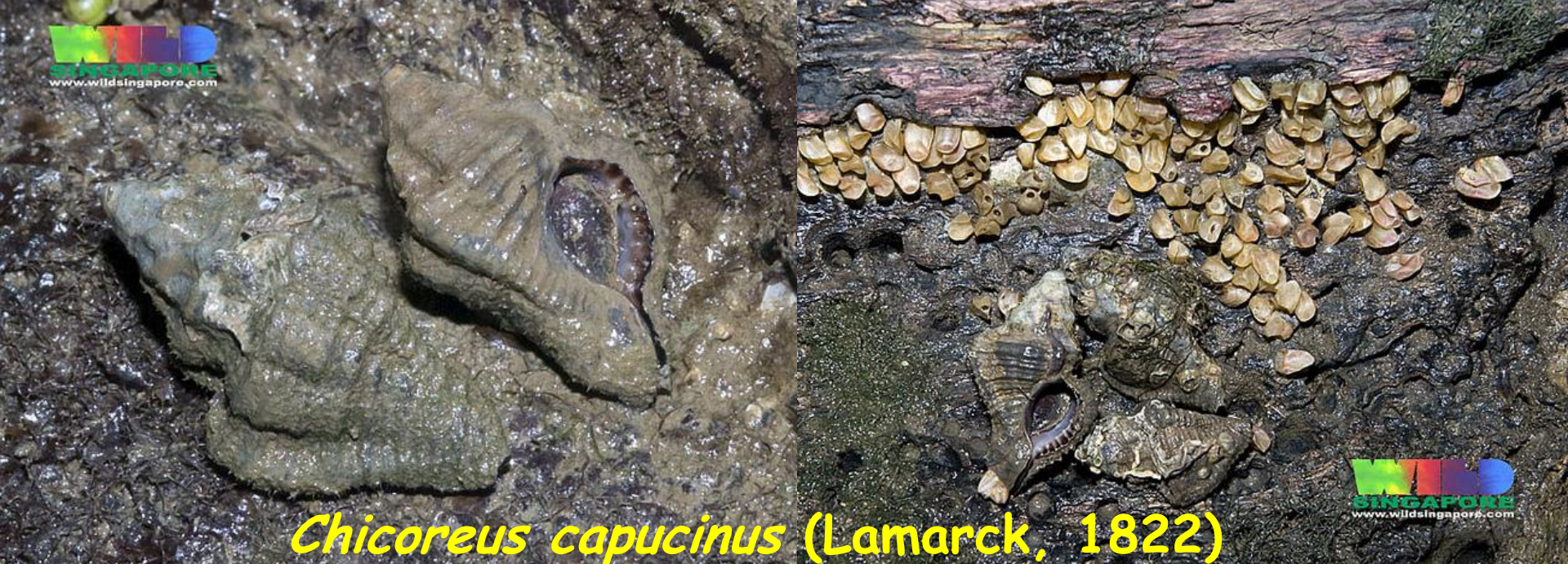


Cassidula Nucleus
(Gmelin, 1791)



Thais species from mangrove areas





Chicoreus capucinus (Lamarck, 1822)





Dostia cornucopia (Gmelin, 1791)

Dostia violacea (Gmelin, 1791)



Nerita articulata Gould, 1847

Terebralia sulcata
(Born, 1778)



Cerithidea quadrata Sowerby, 1866
& *obtusa* Lamarck, 1822



Telescopium telescopium (L., 1758)

Littoraria carinifera (Menke, 1830)



Littoraria melanostoma (Gray, 1839)



Littoraria conica (Philippi, 1846)



