
Saxidomus giganteus

Beefsteak clam, butter,
or Washington clam

Phylum: Mollusca

Class: Bivalvia, Heterodonta, Euheterodonta

Order: Imparidentia, Venerida

Family: Veneroidea, Veneridae

Taxonomy: Originally described as *Venerupis gigantea*, other synonyms include conflicts of taxonomic genus-species gender agreement, as *Saxidomus* is feminine (article 31.2, ICZN): *S. gigantea* (e.g., Paul et al. 1976; Robinson and Breese, 1982; Bendell 2014), as well as *Venus maxima*.

Description

Size: Adults average 10 cm in length (Paul et al. 1976; Kozloff 1993).

Color: Shell exterior is whitish, but can also have patches of blackish discoloration; juvenile exterior is sometimes tan in color (Kozloff 1993). The shell interior is also white.

General Morphology: Bivalve mollusks are bilaterally symmetrical with two lateral valves or **shells** that are hinged dorsally and surround a mantle, head, **foot** and viscera (see Plate 393B, Coan and Valentich-Scott 2007). The Veneroidea is a large and diverse bivalve heterodont order that is characterized by well-developed hinge teeth. There are 22 local families, and members of the Veneridae have three cardinal teeth on each valve (see Fig 302, Kozloff 1993; Plate 396H, Coan and Valentich-Scott 2007) (Fig. 4).

Body:

Color:

Interior: The ligament is completely external, and is seated on a long, massive nymph, or chondrophore (Fig. 4). The body tissue is rubbery and is “superb for chowder” (Kozloff 1993). Maximal systolic pressure was recorded for *Tresus capax* (see description in this guide) to be 13 cm H₂O, which is higher than 11 cm H₂O

recorded for *Saxidomus giganteus* (Florey and Cahill 1977).

Exterior:

Byssus:

Gills:

Shell: The shell is oval in shape (Coan and Carlton 1975), and the posterior is truncate (Keen and Coan 1974).

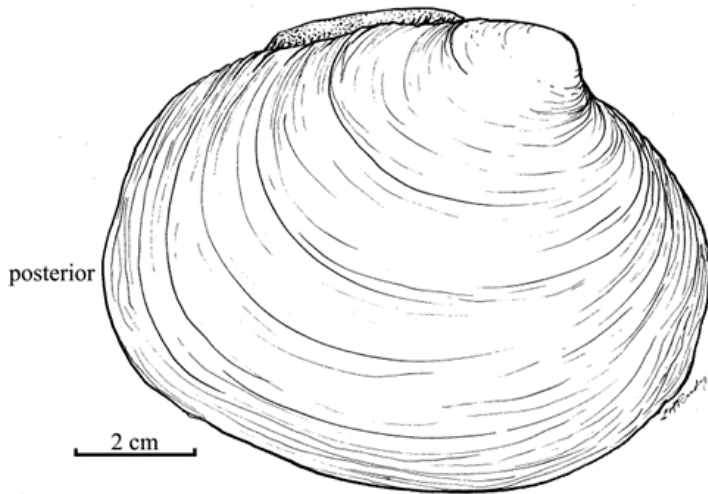
Interior: The valves are similar in shape. The inner ventral margin is smooth (Keen and Coan 1974), and the inner surface is white and porcelaneous. The muscle scars are dark and subequal in size. The pallial line is continuous (but broken by a sinus), not a series of scars (Fig. 3). The flesh is often reddish, hence one common name, the beefsteak clam.

Exterior: Exterior sculpture is with raised concentric growth lines and grooves, with no radial lines (Fig. 1). The valves are very similar, the shell is thick, heavy, and deep (Fig. 2). The most prominent lines representing periods of slowed growth (Kozloff 1993). The valves gape only slightly at posterior end (gape less than 1/4 shell width) (Kozloff 1993). Individuals can retract their siphon, but not feet. The shell microstructure was described for many veneroid clams by Shimamoto (1986), where *Saxidomus* species were characterized by a Type I shell composed of both composite prismatic and crossed lamellar structure (Shimamoto 1986).

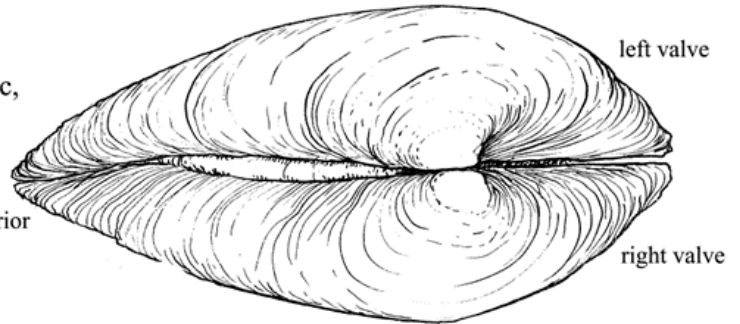
Hinge: The hinge is very thick, heavy, and is posterior and external. There are three cardinal hinge teeth, flanked by a long lateral tooth in each valve (Fig. 4).

Eyes:

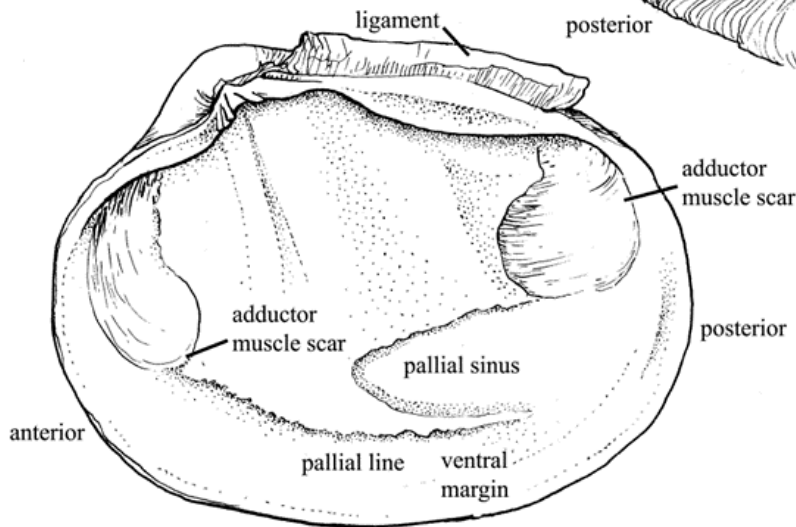
Saxidomus giganteus



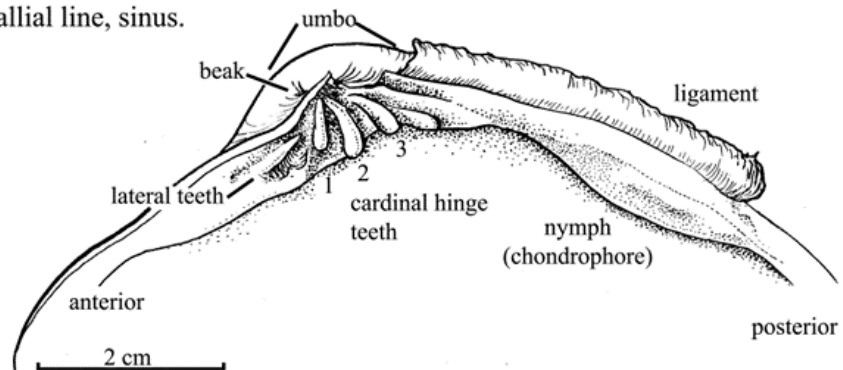
1. *Saxidomus giganteus*, exterior, right valve x1: shell whitish, oval; posterior truncate; concentric, rough ribs close together; valves similar, thick, heavy.



2. Exterior (dorsal view): valves similar, deep; hinge heavy, ligament external.



3. Interior, right valve: margin smooth, surface white, porcelainous; muscle scars similar; strong pallial line, sinus.



4. Interior, right valve (dorsal region) x1.5: three cardinal hinge teeth; ligament seated on nymph; long lateral teeth.

Foot:

Siphons:

Burrow: Inhabits burrows up to 30 cm deep (Kozloff 1993). The burrow opening is recognizable by a cigar-shaped or deflated figure eight-shaped hole that is 1.2–2 cm long (Jacobson 1975).

Possible Misidentifications

Veneroida is a large bivalve order, characterized by well-developed hinge teeth, including most heterodonts. The family Veneridae is characterized by a hinge without lateral teeth, ligament that is entirely external, radial ribs on shell exterior, and three cardinal teeth on each shell valve. There are 12–16 species reported locally in this family within the genera *Nutricola*, *Saxidomus*, and *Leukoma*, with two species in each, and *Gemma gemma*, *Irusella lamellifera*, *Tivelatulorum*, *Venerupis philippinarum*, *Mercenaria mercenaria*, *Callithaca tenerrima*, each with a single species represented locally.

Nutricola species are small, with shells usually less than 10 mm in length. *Gemma gemma* also has a small shell, but it is triangular in shape compared to *Nutricola* species with elongate or oval shells. *Tivela stultorum* also has a triangular shell, but individuals are larger than *G. gemma* and have a smooth shell surface with shiny periostracum.

The remaining species have shells larger than 10 mm in length. Some species have shell sculpturing that is dominated by commarginal ribs with fine radial ridges and others have shells that have radial ridges with inconspicuous, or not predominating, commarginal ribs. Of those in the former category, *I. lamellifera* has widely spaced commarginal lamellae and a shell that is short compared to *M. mercenaria* and *C. tenerrima*. The two latter species have elongated shells, no anterior lateral teeth and

valves that do not gape. *Saxidomus* species also have an elongate shell, when compared to *I. lamellifera*, but they possess anterior lateral teeth and valves that are separated by a narrow gape, posteriorly. *Saxidomus nuttalli* and *S. giganteus* can be differentiated as the former species has an elongate and thinner shell as well as a narrow escutcheon (not present in *S. giganteus*). The shell sculpturing in *S. giganteus* also appears smooth as the commarginal ribs are thin, low and tightly spaced, while the opposite is true for *S. nuttalli*. Its shell is more elongate, the ribs heavier, rougher and more conspicuous (Coan and Carlton 1975) and the interior is often marked posteriorly with purple. *Saxidomus nuttalli*, the larger, more southern species, is found in California in the same habitat as *S. giganteus*, but apparently does not extend into Oregon. (*S. nuttalli* is the only *Saxidomus* in Humboldt Bay, however). *Saxidomus nuttalli*, referred to as the “money clam” because of its representation as currency for Californian native American tribes (Ricketts and Calvin 1952), resembles *S. giganteus*, but is larger (ironically, 12.7 compared to 7.6 cm) and has more prominent growth lines and a shell that is purplish at the siphonal end ((Ricketts and Calvin 1952; Kozloff 1993). *Saxidomus nuttalli* is more common in the southern end of its distribution, while *S. giganteus* is more common north (Ricketts and Calvin 1952).

Panopea generosa, the deep-burrowing geoduck, is quadrate, and gapes widely. *Tresus capax*, the gaper clam, (family Mactridae, see description in this guide), is also quadrate, fairly smooth with chalky white shell exterior. The truncated posterior gapes moderately, its ligament is partly internal, the cardinal teeth are “A” shaped, and the shell has a dark, eroded partial covering.

Ecological Information

Range: Type locality is not specified (see Orr et al. 2013). Known range includes the

Aleutian Islands, Alaska to Monterey, California; *S. giganteus* is rare in the southern range.

Local Distribution: Locally occurs in bays and estuaries, rarely on open coast or inlets with oceanic influence (Packard 1918).

Common from Alaska to San Francisco Bay, California, but rare south of Humboldt bay, California (Kozloff 1993).

Habitat: Occurs in mud or sand (Coan and Carlton 1975), gravelly beaches (Puget Sound, Washington). “Clam gardens”, created adjacent to intertidal rock walls constructed by human populations in the Holocene, have four times as many *S. giganteus* and twice as many *P. staminea* (see description in this guide) individuals as non-walled beaches, and transplanted juveniles of the latter species also grow faster (1.7 times faster) in clam gardens (Goesbeck et al. 2014).

Salinity: Occurs in sites with average yearly salinity is 29 (range 24–32, Puget Sound, Washington Goong and Chew 2001).

Temperature: Individuals prefer temperate-cold waters (see **Range**).

Tidal Level: Individuals most commonly collected from just under the sediment surface, but also found up to 30 cm deep.

Associates: Occasionally infested with immature specimens of commensal pea crab *Pinnixa littoralis*, but usually free of symbiotic or parasitic associates (Ricketts and Calvin 1971). Co-occurs with other clams, *Tapes philippinarum* and *Protothaca staminea* as well as the shore crab, *Hemigrapsus* (Nickerson 1977; Goong and Chew 2001). *Protothaca staminea* and *S. giganteus* co-occur on Kiket Island, Washington, where the greatest diversity and richness of other marine invertebrates are found (Houghton 1977). Co-occurs with other clams (e.g., *Tresus capax* and *T. nuttallii*, Gillispie and Bourne 2004; *Sanguinolaria nuttallii*, Peterson and Andre 1980), and the

presence of the latter species is negatively effected by *S. nuttallii* (Peterson and Andre 1980).

Abundance: “The most abundant clam of the Northwest” (Ricketts and Calvin 1971), *Saxidomus giganteus* was a commercially harvested species in Puget Sound, Washington (Kozloff 1974). Up to 352 individuals/m² were reported from beaches in British Columbia, Canada (Gillispie and Bourne 2005). In British Columbia beaches, assessed in 1993, *S. giganteus* density was as high as 376 individuals/m² (Gillispie and Bourne 2004).

Life-History Information

Reproduction: Separate sexes reproduce by free-spawning, external fertilization and development via a free-swimming larva. Oocytes are 80–90 µm in diameter and surrounded by a jelly layer that is 230 µm in diameter (see Fig. 1, Breese and Phibbs 1970). Spawning from March–June has been reported for the Oregon coast (Fraser 1929; Robinson and Breese 1982; Kabat and O’Foighil 1987). Gametogenesis occurs in fall months and is complete by August and September in the Strait of Georgia (Fraser 1929). Like *Protothaca staminea*, spawning in response to dense algal blooms has been reported (Robinson and Breese 1982). There is considerable variation in spawning times, even in neighboring beds with variable water temperatures. Polar body formation occurs 60 minutes post fertilization and cleavage begins 30 minutes later; trochophore larvae develop after 24 hours, which become bivalve veliger larvae 24 hours later (18°C, see Fig. 1, Breese and Phibbs 1970).

Larva: Bivalve development generally proceeds from external fertilization via broadcast spawning through a ciliated trochophore stage to a veliger larva. Bivalve veligers are characterized by a ciliated velum that is used for swimming, feeding and respiration. The veliger larva is also found in many gastropod lar-

vae, but the larvae in the two groups can be recognized by shell morphology (i.e. snail-like versus clam-like). In bivalves, the initial shelled-larva is called a D-stage or straight-hinge veliger due to the "D" shaped shell. This initial shell is called a prodissoconch I and is followed by a prodissoconch II, or shell that is subsequently added to the initial shell zone (see Fig. 1, Caddy 1969). Finally, shell secreted following metamorphosis is simply referred to as the dissoconch (see Fig. 2, Brink 2001). Once the larva develops a foot, usually just before metamorphosis and loss of the velum, it is called a pediveliger (see Fig. 1, Caddy 1969; Kabat and O'Foighil 1987; Brink 2001). (For generalized life cycle see Fig. 1, Brink 2001). Veliger larvae of *S. giganteus* are free-swimming for up to 30 days and grow approximately 7 μm per day (Breese and Phibbs 1970). They are straight hinge (see Fig. 4, Brink 2001) until they are 160 μm in length after 2 weeks (Fraser and Smith 1928). They have an anterior end that is longer and more pointed than the posterior, which is broadly rounded (Brink 2001). Throughout development, the umbo and both ends (ant and post) become broadly rounded and larvae are longer than they are tall. Larvae metamorphose at about 230 μm and (Brink 2001) have a pelagic duration of 4 wks (Fraser and Smith 1928; Kabat and O'Foighil 1987). Optimal growth and survival for larvae were obtained at 15°C, salinity 20–29, when fed a mixture of three algal species (settlement at 20–25 days when larvae were 230–250 μm , Bourne 1971).

Juvenile: Juvenile growth was 18 μm per day for 150 days post metamorphosis (Breese and Phibbs 1970, see also Walne 1973).

Longevity: To 20 years or more (Paul et al. 1976; Haderlie 1980).

Growth Rate: There is little growth of young individuals immediately after settling. In-

stead juveniles grow considerably the following spring (Fraser and Smith 1928). Growth rates varied for clams collected in different sites around Puget Sound, Washington, with oldest clams (e.g., 30 years) being 95–140 mm in length (Goong and Chew 2001, see also Gillespie and Bourne 2005). Growth rates are measured by annular rings, which are formed during periods of slowed growth, usually in winter months (Paul et al. 1976). Periods of growth may be slowed by reduction in salinity (Gillikin et al. 2005) and growth may be density dependent (Kline 1982). Specimens reached 65 mm in length after 8–9 years on Porpoise Island, southeast Alaska (Paul et al. 1976). At three beaches in British Columbia where populations were measured in 1993, individuals 40–71 mm in length were 8 years old, 24–93 mm were 2–16 years, and 25–67 mm were 2–12 years old; estimating that individuals 6.5 years old are approximately 63 mm in length (Gillispie and Bourne 2004). Legal catch size is 63 mm in length, which occurs when individuals are approximately 6–10 years old (Gillispie and Bourne 2004).

Food: A filter-feeder, that feeds by straining material from currents of water that are pumped through the gills. The ingestion and concentration of toxic algae (e.g., from the genera *Alexandrium*, *Gymnodinium*, *Pyrodinium*, Smolowitz and Doucette 1995) leads to paralytic shellfish poisoning, rendering the clams dangerous for human consumption (Kitts et al. 1992; Kitts and Smith 1992). Clams accumulate toxins in their siphon tips, in part, to reduce predation (Price and Lee 1972; Smolowitz and Doucette 1995). This suite of neurotoxins (50 structural variants) are collectively known as saxitoxins as they were first isolated from *S. giganteus* (Oshima et al. 1977; Vale 2010) and the chemical composition of this toxin was described by Schantz et al. (1974).

Predators: Known predators include sting

rays, fishes, shore birds (e.g., gulls, Maron 1982), drilling snails, and sea otters (Kvitek and Oliver 1992; Kvitek et al. 1993, but see reduction in sea otter predation due to presence of saxitoxin, Kvitek et al. 1991). Predation by crab species, which break open the shells of many bivalves, is reduced by a larger and thicker shell, an inflated shell shape with steep ventral margin, and the ability to burrow deeply. Other bivalves (e.g., *Protothaca staminea*, see description in this guide) also close tightly, further reducing predation, however, the narrow posterior gape in *S. giganteus* allows for potential breaking by crab claws (Boulding 1984). *Octopus dofleini* are known to prey upon *S. giganteus* by drilling holes in their shells; increased shell thickness may reduce predation as incomplete boreholes were observed on thicker shelled clams (Ambrose et al. 1988). *Saxidomus giganteus* was historically (e.g., Burchell et al. 2013) and is currently a commercially important and harvested species; the most important food clam in British Columbia, Canada (Bourne 1971; Haderlie 1980; Kozloff 1993, see also Fig. 1 Gillispie and Bourne 2005). The fishery in southeast Alaska began in 1930 with a harvest of 11,340 kg (Paul et al. 1976) and in the Broughton Archipelago, British Columbia, Canada harvests as high as 500,000 kg were reported in 1970 (Dunham et al. 2006). (see Bechtol and Gustafson 1998 for commercial summary).

Behavior:

Bibliography

1. AMBROSE, R. F., B. J. LEIGHTON, and E. B. HARTWICK. 1988. Characterization of boreholes by *Octopus dofleini* in the bivalve *Saxidomus giganteus*. *Journal of Zoology*. 214:491-503.
2. BECHTOL, W. R., and R. L. GUSTAFSON. 1998. Abundance, recruitment, and mortality of Pacific littleneck clams *Protothaca staminea* at Chugachik Island, Alaska. *Journal of Shellfish Research*. 17:1003-1008.
3. BENDELL, L. I. 2014. Evidence for declines in the native *Leukoma staminea* as a result of the intentional introduction of the non-native *Venerupis philippinarum* in coastal British Columbia, Canada. *Estuaries and Coasts*. 37:369-380.
4. BOULDING, E. G., and T. K. HAY. 1984. Crab response to prey density can result in density-dependent mortality of clams. *Canadian Journal of Fisheries and Aquatic Sciences*. 41:521-525.
5. BOURNE, N. 1971. The effects of temperature, salinity and food on the development of the larvae of butter clams, *Saxidomus giganteus*. *Proceedings National Shellfisheries Association*. 61:1971-1971.
6. BREESE, W. P., and F. D. PHIBBS. 1969. Some observations on the spawning and early development of the butter clam, *Saxidomus giganteus*. *Proceedings National Shellfisheries Association*. 60:95-98.
7. BRINK, L. A. 2001. Mollusca: Bivalvia, p. 129-149. *In: Identification guide to larval marine invertebrates of the Pacific Northwest*. A. Shanks (ed.). Oregon State University Press, Corvallis, OR.
8. BURCHELL, M., A. CANNON, N. HALLMANN, H. P. SCHWARCZ, and B. R. SCHOENE. 2013. Intersite variability in the season of shellfish collection on the central coast of British Columbia. *Journal of Archaeological Science*. 40:626-636.
9. COAN, E. V., and P. VALENTICH-SCOTT. 2007. Bivalvia, p. 807-859. *In: The Light and Smith manual: intertidal invertebrates from central California to Oregon*. J. T. Carlton (ed.). University of California Press, Berkeley, CA.
10. DUNHAM, J. S., B. KOKE, G. E. GILLESPIE, and G. MEYER. 2007. An exploratory survey for littleneck clams (*Protothaca staminea*) in the Broughton Archipelago,

- British Columbia - 2006. Canadian Manuscript Report of Fisheries and Aquatic Sciences. 2787:1-33.
11. FLOREY, E., and M. A. CAHILL. 1977. Hemodynamics in Lamellibranch mollusks: confirmation of constant-volume mechanism of auricular and ventricular filling. Remarks on heart as site of ultrafiltration. *Comparative Biochemistry and Physiology. A-Physiology.* 57:47-52.
 12. FRASER, C. M. 1929. The spawning and free swimming larval periods of *Saxidomus* and *Paphia*. *Transactions of the Royal Society of Canada.* 23:195-198.
 13. FRASER, C. M., and G. M. SMITH. 1928. Notes on the ecology of the butter clam, *Saxidomus giganteus*. *Transactions of the Royal Society of Canada.* 22:271-286.
 14. GILLESPIE, G. E., and N. F. BOURNE. 2005. Exploratory intertidal bivalve surveys in British Columbia - 2004. Canadian Manuscript Report of Fisheries and Aquatic Sciences. 2734:1-144, VIII.
 15. GILLIKIN, D. P., F. DE RIDDER, H. ULENS, M. ELSKENS, E. KEPPEMS, W. BAEYENS, and F. DEHAIRS. 2005. Assessing the reproducibility and reliability of estuarine bivalve shells (*Saxidomus giganteus*) for sea surface temperature reconstruction: implications for paleoclimate studies. *Palaeogeography Palaeoclimatology Palaeoecology.* 228:70-85.
 16. GOONG, S. A., and K. K. CHEW. 2001. Growth of butter clams, *Saxidomus giganteus* Deshayes, on selected beaches in the state of Washington. *Journal of Shellfish Research.* 20:143-147.
 17. GROESBECK, A. S., K. ROWELL, D. L., and A. K. SALOMON. 2014. Ancient clam gardens increased shellfish production: adaptive strategies from the past can inform food security today. *Plos One.* 9.
 18. HADERLIE, E. C., and D. P. ABBOTT. 1980. Bivalvia: the clams and allies, p. 355-410. *In: Intertidal invertebrates of California.* R. H. Morris, D. P. Abbott, and E. C. Haderlie (eds.). Stanford University Press, California.
 19. HOUGHTON, J. P. 1977. Age and growth of *Protothaca staminea* and *Saxidomus giganteus* at Kiket Island Washington, USA. *Proceedings National Shellfisheries Association.* 67:119-119.
 20. INTERNATIONAL COMMISSION ON ZOOLOGICAL NOMENCLATURE. 2016. Article 31.2.
 21. JACOBSON, R. W., P. HEIKKILA, and K. S. HILDERBRAND. 1975. Oregon's captivating clams. Oregon State University Extension Service, Sea Grant Marine Advisory Program, and Oregon Dept. of Fish and Wildlife, Corvallis, Or.
 22. KABAT, A. R., and D. O'FOIGHIL. 1987. Phylum Mollusca, Class Bivalvia, p. 309-353. *In: Reproduction and development of marine invertebrates of the northern Pacific Coast.* M. F. Strathmann (ed.). University of Washington Press, Seattle, WA.
 23. KEEN, A. M., and E. COAN. 1974. Marine molluscan genera of western North America: an illustrated key. Stanford University Press, Stanford, CA.
 24. KITTS, D. D., and D. S. SMITH. 1992. Cross-reacting antigens in the butter clam (*Saxidomus giganteus*) and their relationship to total paralytic shellfish poison toxicity. *Toxicon.* 30:967-976.
 25. KITTS, D. D., D. S. SMITH, M. K. BEITLER, and J. LISTON. 1992. Presence of paralytic shellfish poisoning toxins and soluble proteins in toxic butter clams (*Saxidomus giganteus*). *Biochemical and Biophysical Research Communications.* 184:511-517.
 26. KLINE, T. C. 1984. The effect of population density on the growth of the butter clam, *Saxidomus giganteus*. *Journal of Shellfish Research.* 3:112-112.

27. KOZLOFF, E. N. 1974. Seashore life of Puget Sound, the Strait of Georgia, and the San Juan Archipelago and adjacent regions. University of Washington Press, Seattle and London.
28. —. 1993. Seashore life of the northern Pacific coast: an illustrated guide to northern California, Oregon, Washington, and British Columbia. University of Washington Press, Seattle.
29. KVITEK, R. G., C. E. BOWLBY, and M. STAEDLER. 1993. Diet and foraging behavior of sea otters in southeast Alaska. *Marine Mammal Science*. 9:168-181.
30. KVITEK, R. G., A. R. DEGANGE, and M. K. BEITLER. 1991. Paralytic shellfish poisoning toxins mediate feeding behavior in sea otters. *Limnology and Oceanography*. 36:393-404.
31. KVITEK, R. G., and J. S. OLIVER. 1992. Influence of sea otters on soft-bottom prey communities in southeast Alaska. *Marine Ecology Progress Series*. 82:103-113.
32. MARON, J. L. 1982. Shell-dropping behavior of western gulls (*Larus occidentalis*). *Auk*. 99:565-569.
33. NICKERSON, R. B. 1977. A study of the littleneck clam *Protothaca staminea* and the butter clam *Saxidomus giganteus* in a habitat permitting coexistence, Prince William Sound, Alaska USA. *Proceedings National Shellfisheries Association*. 67:85-102.
34. ORR, J. W., D. T. DRUMM, R. VAN SYOC, K. P. MASLENIKOV, T. W. PIETSCH, D. E. STEVENSON, and R. R. LAUTH. 2013. An annotated checklist of bottom-trawled macroinvertebrates of Alaska, with an evaluation of identifications in the Alaska Fisheries Science Center Bottom-Trawl Survey Database. NPRB Project 1016 Final Report. North Pacific Research Board, Alaska.
35. OSHIMA, Y., L. J. BUCKLEY, M. ALAM, and Y. SHIMIZU. 1977. Heterogeneity of paralytic shellfish poisoning: three new toxins from cultured *Gonyaulax tamarensis* cells, *Mya arenaria* and *Saxidomus giganteus*. *Comparative Biochemistry and Physiology: C-Pharmacology Toxicology & Endocrinology*. 57:31-34.
36. PACKARD, E. L. 1918. Molluscan fauna from San Francisco Bay. *Zoology*. 14:199-452.
37. PAUL, A. J., J. M. PAUL, and H. M. FEDER. 1976. Age, growth and recruitment of the butter clam, *Saxidomus gigantea* on Porpoise Island, Southeast Alaska, USA. *Proceedings National Shellfisheries Association*. 66:26-28.
38. PETERSON, C. H., and S. V. ANDRE. 1980. An experimental analysis of interspecific competition among marine filter feeders in a soft-sediment environment. *Ecology*. 61:129-139.
39. PRICE, R. J., and J. S. LEE. 1972. Paralytic shellfish poison and melanin distribution in fractions of toxic butter clam (*Saxidomus giganteus*) siphon. *Journal of the Fisheries Research Board of Canada*. 29:1657-1658.
40. RICKETTS, E. F., and J. CALVIN. 1952. *Between Pacific tides: an account of the habits and habitats of some five hundred of the common, conspicuous seashore invertebrates of the Pacific Coast between Sitka, Alaska, and Northern Mexico*. Stanford: Stanford University Press, Stanford.
41. —. 1971. *Between Pacific tides*. Stanford University Press, Stanford, California.
42. ROBINSON, A. M., and W. P. BREESE. 1982. The spawning season of four species of clams in Oregon. *Journal of Shellfish Research*. 2:55-57.
43. SCHANTZ, E. J., V. E. GHAZAROSSIAN, H. K. SCHNOES, F. M. STRONG, J. P. SPRINGER, J. O. PEZZANITE, and J. CLARDY. 1975. Structure of Saxitoxin.

Journal of the American Chemical Society. 97:1238-1239.

44. SHIMAMOTO, M. 1986. SHELL MICROSTRUCTURE OF THE VENERIDAE BIVALVIA AND ITS PHYLOGENETIC IMPLICATIONS. Science Reports of the Tohoku University Second Series (Geology). 56:1-39.
45. SMOLOWITZ, R., and G. DOUCETTE. 1995. Immunohistochemical localization of Saxitoxin in the siphon epithelium of the butter clam, *Saxidomus giganteus*. Biological Bulletin. 189:229-230.
46. VALE, P. 2010. New saxitoxin analogues in the marine environment: developments in toxin chemistry, detection and biotransformation during the 2000s. Phytochemistry Reviews. 9:525-535.
47. WALNE, P. R. 1973. Growth rates and nitrogen and carbohydrate contents of juvenile clams, *Saxidomus giganteus*, fed three species of algae. Journal of the Fisheries Research Board of Canada. 30:1825-1830.

Updated 2016

T.C. Hiebert