

NEMOURIA

Occasional Papers of the Delaware Museum of Natural History

NUMBER 39

SEPTEMBER 30, 1991

JOHANNES THIELE AND HIS CONTRIBUTIONS TO ZOOLOGY. PART 2. GENUS-GROUP NAMES (MOLLUSCA)

Kenneth J. Boss¹ and Rüdiger Bieler²

ABSTRACT. This is the second part of a series on the German zoologist Johannes Thiele (1860-1935) and comprises a critical listing of the genus-group taxa which he described as new to malacology. Each of these names is accompanied by author and bibliographic references, original status, type-species with its original binominal spelling and bibliographic source and some data on subsequent taxonomic placements. Thiele introduced a total of 291 such names in the Phylum Mollusca, distributed as follows: 11 Aplacophora; 39 Polyplacophora; 200 Gastropoda (138 Prosobranchia; 20 Opisthobranchia and 42 Pulmonata); 31 Bivalvia; 10 Cephalopoda; there were no new scaphopod or monoplacophoran names. Of these, later authors recognized as valid 85 at the generic level, 110 at the subgeneric level; 71 are considered to be synonyms, and the remaining 25 are unjustified emendations or errors.

INTRODUCTION

As part of a series on the scientific contributions of Johannes Thiele, the eminent German zoologist, we provide here an alphabetical listing and analysis of all the genus-group taxa introduced by him in his publications on mollusks as delineated by Bieler & Boss (1989). A total of 291 names is included in the following format: (1) genus-group name; (2) author(s); (3) year of publication; (4) condensed bibliographic reference; (5) original status as given by Thiele; (6) subsequent status

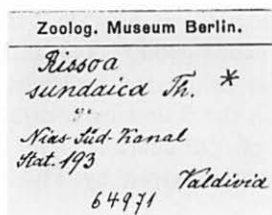
¹Museum of Comparative Zoology, Harvard University,
Cambridge, Massachusetts 02138, U.S.A.

Serial Publication
ISSN 0085-3887

²Delaware Museum of Natural History. Current address:
Field Museum of Natural History, Roosevelt Road at Lake
Shore Drive, Chicago, Illinois 60605, U.S.A.



Portrait of Johannes Thiele (undated, but photograph probably taken shortly before his seventieth birthday in 1930) and sample of his distinctive handwriting on specimen label.



as assigned by Thiele himself or other authors; (7) method of designation of the type-species; (8) name of the type-species as originally given by Thiele; (9) the exact or correct binominal combination of the type-species with its original author and page and other appropriate citations [Thiele's own species names of mollusks will be covered in future parts of this series]; (10) family-level placement (a family name without brackets indicates an original placement at the time of the original description; names enclosed by brackets are subsequent placements either by Thiele or other authors); and (11) class and/or other higher category.

For each taxon we have paid special attention to the type-species: its original binomen is given along with a reference to its original introduction into the literature and, in most cases, a citation of its first illustration or figure. In addition, we provide data on the subsequent hierarchical placement of the genus-group taxon; reference here is given to certain classic authoritative texts (e.g., Wenz, Zilch, etc.), all of which are listed in the bibliography.

NOTES ON RANKING OF TAXA

Usually, Thiele clearly indicated that he was establishing a new genus-group taxon and introduced his new names as genera, subgenera, or 'sections.' In some cases he omitted a rank and/or just referred to a new "Gruppe" or "Untergruppe." According to the International Code of Zoological Nomenclature (ICZN, 1985), Article 10(e), the term 'section' is deemed to be a subgeneric name. Thiele himself often obfuscated the problem of ranking when the sectional or subgeneric name, instead of the generic name, was used in figure captions. Nevertheless, we have retained his original ranking to illustrate the intended position in relation to genus *and* subgenus.

THIELE'S TYPE CONCEPT

Thiele's concept of the type-species and its designation is somewhat at variance with the present, more rigorous regulations of the International Code of Zoological Nomenclature (ICZN, 1961, 1985; Article 68), wherein the listing of the first of several species in a new genus-group taxon does not constitute a type designation. Part of the difficulty in the interpretation of type-species for Thiele's genus-group taxa stems from his German usage, namely "typische Art" for both "typical species" in the sense of an example, as well as "type-species" in the nomenclatural sense.

In his early publications such as *Das Gebiss*, Thiele (1893e: 376,

see also 372) sometimes considered the first species mentioned under a generic name to be the type-species: "Ausser der typischen Art, die ich wie gewöhnlich zuerst beschreibe . . .". At other times, he apparently cited a particular species as "a good example." Further, he did not necessarily restrict the example to a single species, but sometimes even mentioned two typical species such as in the case of his new genus *Radsiella* (1893e: 368-369): "Als typische Vertreter der Gattung sehe ich die beiden ersten Arten . . . an." Such departures from current requirements and usage are occasionally still true for his later works (e.g., 1925b: 268): "von den typischen Arten . . .".

The more exacting concepts which we now employ with regard to type-species, their designation and the like had yet to be universally adopted by the community of systematists in Thiele's time. Also, the formal publication of the International Code of Zoological Nomenclature in 1961 contained regulations (especially Articles 68 and 69), concerning the boundary year 1931; this particularly affected taxa established in the *Handbuch der systematischen Weichtierkunde* which was published during this time; these names had to be treated differently with reference to "original designation."

In our treatment of Thiele's genus-group names, we utilized the following interpretations: If Thiele explicitly used the word "type" or its equivalents (e.g., *Ischnochiton*: "Typus einer eigenen Untergattung . . ."; *Lissarca*: "typische Art ist . . ."), we credited this as type-species by original designation. When Thiele positively included only one species in a new genus-group taxon, this was treated as "type by monotypy." We did not acknowledge Thiele with an original designation if he used such phraseology as: "I place this in a new genus"; "I introduce this for . . ."; rather, if the higher taxon was represented only by a single species, then we accordingly considered the designation, as noted above, to be one of monotypy; if two or more species were included, a subsequent designation had to be found.

SOME PROBLEMS AND INCONSISTENCIES

Certain problems arise in the dating of a taxon, ascertaining the method of designation of the type-species and attributing authorship to the name. Thiele occasionally erred, and some of his mistakes were simply matters of orthography. Others were occasioned by his lack, at the time he worked, of modern published resources on animal taxa such as Sherborn's *Index Animalium* and Neave's *Nomenclator Zoologicus*. Additional problems were caused by our current application of rules and interpretations not in use during Thiele's career, and still more were

associated with his having numerous papers in press simultaneously in which new names might be repeatedly used. The following are examples of some of the problems encountered.

Mistakes in spelling: This includes misspellings of names introduced by other authors which have or could have caused problems; an example is Thiele's erroneous "*Cleovitrea*" for Iredale's *Cleotrivia*.

Further, there is difficulty in distinguishing between misspellings with no nomenclatural standing (indicated in our listing by placing the name in quotation marks [". . ."]) and deliberate, but unjustified emendations. This may be compounded with Thiele's usage of another author's taxon (usually without his naming the other author) in a broadened, restricted, different or incorrect sense, a so-called "taxon sensu Thiele." With regard to these, several genus-group names of earlier authors have been later attributed to him; these were usually Thiele's misconception, or were subsequently perceived as his misconception of the taxon of the original author.

Thus, we have Thiele's misconception of *Beanella* Dall 1882, erroneously referred to (by some authors) as *Beanella* Thiele rather than more precisely as "*Beanella* 'Dall' Thiele in Troschel & Thiele 1893, non Dall 1882." These so-called misconstrued taxa of Thiele do not have type-species, although frequently they have had them designated by subsequent authors. We, of course, cannot list all genus-group taxa falling into this category. However, we have included a few of these, e.g., *Ariocaelatura* 'Germain' Thiele 1931, non Germain 1921; *Beanella* 'Dall' Thiele in Troschel & Thiele 1893, non Dall 1882; *Clathropleura* 'Tiberi' Thiele in Troschel & Thiele 1893, non Tiberi 1877; and *Silicula* 'Jeffreys' Thiele 1934, non Jeffreys 1879.

New names were not always clearly marked as such by Thiele. In the case of his larger contributions such as the *Handbuch der systematischen Weichtierkunde*, some are not properly indicated in the index.

Original authorship was sometimes confused by Thiele: he claimed taxa of others (e.g., *Pyrunculus*); he credited authors of manuscript names (e.g., *Arcopella*); and he attributed authorship to workers whose publications were later rejected (e.g., Chemnitz).

Thiele occasionally cited the wrong dates for some of his own taxa (e.g., 1921 instead of 1924a) or he described taxa twice in subsequent or "simultaneous" publications (e.g., *Tonicina*). Some of these errors can be attributed either to having several descriptions of the same new taxa in press simultaneously or to having articles in press for many years. In a letter to an unnamed colleague at the British Museum (Natural History), dated 14 February 1923, he complained of a delay in publication: "Scientific work in Germany has now become very difficult

and completed manuscripts usually can be published only after a longer period. During the war [1914-1918] I had sorted out and worked on many gastropods from the material of the German Deep-Sea Expedition, but the work which was completed in the fall of 1918 has not yet been published" [our translation]. Thiele here referred to one of his major works, the *Gastropoda der Deutschen Tiefsee-Expedition*, which was finally published in 1925.

In having published so many papers, especially those in disparate and obscure journals, Thiele sometimes apparently forgot taxa (e.g., *Prochiton*) or subsequently decided to correct or emend in odd or inappropriate places (e.g., footnote in 1890b, index of 1931c).

ASSESSMENT OF THE TAXA

Probably the most important result of delineating all of Thiele's genus-group taxa is that an evaluation of his contribution can be more accurately made based on the work of later authors. As we remarked earlier, Thiele was one of the greatest researchers in malacology in the early twentieth century (Bieler & Boss, 1989); however, even he was aware that some of the genus-group names he introduced were unnecessary emendations or outright synonyms.

We assessed the subsequent status of Thiele's genus-group names on their treatment in several authoritative works in malacology. For each class or subclass, we utilized the following works: Aplacophora (Boss, 1982; Salvini-Plawen, 1978); Polyplacophora (A. G. Smith, 1960; Belle, 1983; Kaas & Belle, 1980; 1985a and b; 1987; 1990); Gastropoda Prosobranchia (Wenz, 1938-1944); Pulmonata (Zilch, 1959-1960); Opisthobranchia (Odhner, 1968; Pruvot-Fol, 1954); Bivalvia (Chavan, Haas, Hertlein, Keen, or Newell *in* Moore, 1969; Vokes, 1980); Cephalopoda (Nesis, 1987). We additionally referred to other sources such as Vaught (1989).

TABULATION OF THIELE'S GENUS-GROUP NAMES

MOLLUSCA (Grand total: 291)

APLACOPHORA: Total: 11 names

11 Genus-level

POLYPLACOPHORA: Total: 39 names

1 Genus-level

3 Subgenus-level

30 Synonyms

- 2 Unjustified emendations
- 2 Errors
- 1 Unclear

GASTROPODA: Total: 200 names**Prosobranchia: Total: 138 names**

- 44 Genus-level
- 74 Subgenus-level
- 15 Synonyms
- 5 Errors

Opisthobranchia: Total: 20 names

- 8 Genus-level
- 6 Subgenus-level
- 5 Synonyms
- 1 Emendation

Pulmonata: Total: 42 names

- 15 Genus-level
- 17 Subgenus-level
- 10 Synonyms

BIVALVIA: Total: 31 names

- 4 Genus-level
- 10 Subgenus-level
- 10 Synonyms
- 3 Unjustified emendations
- 3 Errors
- 1 Unclear

CEPHALOPODA: Total: 10 names

- 2 Genus-level
- 6 Unjustified emendations
- 1 Synonym
- 1 Error

Thiele introduced a total of 291 genus-group names; of these, 85 were recognized subsequently at the generic, and 110 at the subgeneric, level; 71 names are now considered synonyms and 25 were unjustified emendations or errors. Despite the great contributions made by Thiele, almost one third of his genus-group names were superfluous. Considering the current annual increase in the establishment of new molluscan generic-taxa (Boss, 1989), we hope this analysis of the fate of the names of someone of such eminent stature as Thiele will constitute a warning to contemporary and future workers that not only are many new names probably unnecessary synonyms but they also burden the literature, obfuscate reality and seriously encumber one of the foremost roles of

our system of classification, namely information retrieval.

With more than 15,000 genus-group names now available for Recent mollusks (Vaught, 1989) and with probably fewer than 60,000 Recent species in the Phylum Mollusca (Boss, 1971) there are already clearly too many genus-group names. Such an overburden of our taxonomy is unfortunately all too well documented: Ponder and Warén (1988) list nearly 1,000 family-group names for only part of the Prosobranchia.

ALPHABETICAL LISTING OF FAMILIES WITH TREATED GENUS-GROUP NAMES

(reflecting original and subsequent family-level placements):

APLACOPHORA

- Acanthomeniidae: *Acanthomenia*
 Amphimeniidae: *Amphimena*
 Chaetodermatidae: *Metachaetoderma*, *Prochaetoderma*
 Dondersiidae: *Heathia*
 Hemimeniidae: *Archaeomenia*
 Lepidomeniidae: *Acanthomenia*, *Heathia*, *Notomenia*, *Phyllomenia*,
Sandalomenia
 Limifossoridae: *Metachaetoderma*
 Neomeniidae: *Archaeomenia*
 Pararhopaliidae: *Metamenia*
 Phylomeniidae: *Phyllomenia*
 Prochaetodermatidae: *Prochaetoderma*
 Proneomeniidae: *Amphimena*, *Metamenia*, *Pruvotia*
 Rhopalomeniidae: *Pruvotia*

POLYPLACOPHORA

- Acanthochitonidae: *Acanthochiton*, *Aristochiton*, *Mecynoplax*,
Thaumastochiton
 Callistoplacidae: *Notochiton*
 Callochitonidae: *Icoplax*, *Mopaliella*
 Chaetopleuridae: *Calloplax*, *Helioradsia*
 Chitonidae: *Adriella*, *Amaurochiton*, *Anthochiton*, *Chondroplax*, *Clathro-*
pleura, *Diochiton*, *Georgus*, *Helioradsia*, *Icoplax*, *Leptopleura*,
Lophyriscus, *Lophyropsis*, *Mecynoplax*, *Mopaliopsis*, *Onithoplax*,
Poeciloplax, *Prochiton*, *Radsia*, *Rhodoplax*, *Rhopalopleura*,
Rhyssoplax, "Slerochiton," *Stereoplax*, *Sypharochiton*, *Toniciella*,
Toniciopsis, *Triboplax*
 Cryptoplacidae: *Acanthochiton*, *Aristochiton*, *Thaumastochiton*
 Ischnochitonidae: *Adriella*, *Anthochiton*, *Beanella*, *Calloplax*, *Chondropleura*,

*Helioradsia, Icoplax, Lepidochiton, Lepidopleuroides, Lep-
toptleura, Lophyriscus, Lophyropsis, Mopaliella, Mopaliop-
sis, Notochiton, Radsia, Rhodoplax, Stereoplax, "Toni-
ciella," Tonicina*

Lepidochitonidae: *Beanella, Lepidochiton, Mopaliella*

Lepidopleuridae: *Parachiton*

Leptochitonidae: *Beanella, Lophyropsis, Notochiton, Parachiton*

BIVALVIA

Arcidae: *Noetiella, Paranoetia*

Cardiidae: *Microcardium*

Cyamiidae: *Ptychocardia*

Dreissenidae: *Sinomytilus*

Ledidae: *Silicula*

Limopsidae: *Hochstetterina, Limopsilla, Lissarcula*

Mactridae: *Electromactra*

Mutelidae: *Jheringella*

Mytilidae: *Sinomytilus*

Noetiidae: *Paranoetia, Noetiella*

Nuculidae: *Brevinucula, Lionucula*

Ostreidae: *Dioeciostraea, Monoeciostraea*

Pectinidae: *Adamussium, Arctinula*

Philobryidae: *Hochstetterina*

Semelidae: *"Punigapia"*

Tellinidae: *Arcopella, Clathrotellina, Hemimetis, Pistris, Striotellina, Tellinan-
gulus*

Unionidae: *Jaronia, Luteacarnea, Plagiolopsis, Pustulosa, Venustaconcha*

Verticordiidae: *Acreuciroa, "Lyonsiella"*

Vesicomylidae: *Ptychocardia*

GASTROPODA

Prosobranchia

Aclidae: *Trochaxis*

Aclididae: *"Pherusiana"*

Adeorbidae: *Mörchiella [Moerchiella], Mörchinella [Moerchinella]*

Amphiperatidae: see Cypraeidae

Assimineidae: *Austropilula, Conacmella, Crossilla, Leucostele, Macrassimineae,
Metassimineae, Nanivitrea, Oriella, Ovassimineae, Pseudas-
simineae, Pseudocyclotus, Rupacilla, Sculptassimineae, Suterilla,
Turbacmella*

Bithyniidae: *Emmericiopsis*

- Buccinidae: *Appisania*, *Bathydomus*, *Buccinella*, *Chlanidotella*, *Eosipho*,
Ficulina, *Fusinella*, *Macroniscus*, *Meteuthria*, *Notoficula*, *Pro-*
buccinum, *Proneptunea*, *Prosipho*
- Bulimidae: *Emmericiopsis*
- Bursidae: *Bufonariella*
- Cancellariidae: *Mericella*
- Capulidae: "*Amathinoidas*"
- Cerithiidae: *Cerithiopsilla*, *Eumetula*, *Ischnocerithium*, *Proclava*
- Cerithiopsidae: *Cerithiopsilla*, *Eumetula*, *Proseila*
- Cingulopsidae: *Eatonina*, *Eatoniopsis*, *Watsonella*
- Columbellidae: *Cilara*, *Metanachis*, *Paratilia*, *Pseudanachis*
- Cominellidae: *Meteuthria*
- Conidae: *Acrobela*, *Anticlinura*, *Benthomangelia*, *Citharella*, *Clinuropsis*,
Conasprella, *Fusiturris*, *Micropleurotoma*, *Ptychobela*, *Ptychosyrinx*,
Strioconus, *Typhlosyrinx*
- Cyclostomidae: *Pseudocyclotus*
- Cyclostrematidae: *Bothropoma*, *Chunula*
- Cymatiidae: *Charoniella*
- Cypraeidae: "*Cleovitrea*," *Pediculariella*, *Primovula*, *Procalpurnus*
- Epitoniidae: *Chuniscala*, *Cirsotremopsis*, *Opaliopsis*
- Fossaridae: *Fossarella*, *Iphitella*
- Hydrobiidae: *Caspiella*, *Emmericiopsis*, *Hydrococcus*, *Indopyrgus*, *Lithoglyphop-*
sis, *Pachydrobiella*, *Probythinella*, *Walkerilla*
- Hydrococcidae: *Hydrococcus*
- Lacunidae: *Carinolacuna*
- Lepetellidae: *Cocculinella*
- Littorinidae: *Iphitella*, *Lissoconchus*
- Lyocyclidae: *Lyocyclus*
- Melaniidae: *Cubaedomus*, *Pseudocleopatra*
- Micromelaniidae: *Caspiella*
- Muricidae: *Drupella*, *Gracilimurex*
- Nassariidae: *Naytiopsis*, *Plicarcularia*, *Profundinassa*, *Proneritula*
- Nassidae: see Nassariidae
- Naticidae: *Frovina*, *Prolacuna*, *Sublacuna*
- Olividae: *Gracilancilla*, *Olivellopsis*, *Parvoliva*, *Zemiropsis*
- Ovulidae: *Primovula*, *Procalpurnus*
- Patellidae: *Patellidea*, *Patellona*, *Patellopsis*, *Patinastra*
- Pediculariidae: *Pediculariella*
- Planaxidae: *Proplanaxis*, *Supplanaxis*
- Pleurotomidae: see Turridae
- Pomatiasidae: *Pseudotopoma*
- Potamididae: *Batillariella*, *Cerithideopsilla*, *Cerithideopsis*, "*Zeacumanthus*"

- Pyramidellidae: *Bacteridium*, *Ebalina*, *Euparthenia*, *Oopyramis*, *Stylopyramis*
 Ranellidae: *Charoniella*
 Rissoellidae: *Jeffreysiella*, *Jeffreysilla*, *Jeffreysina*, *Jeffreysiopsis*
 Rissoidae: *Alcidiella*, *Boogina*, *Eatonina*, *Eatoniopsis*, *Watsonella*
 Scalidae: see Epitoniidae
 Skeneopsidae: *Microdiscula*
 Stomatiidae: *Pseudostomatella*
 Strombidae: *Aliger*, *Rostellariella*
 Thiariidae: *Cubaedomus*, *Pseudocleopatra*
 Tornidae: *Mörchinella* [*Moerchinella*]
 Trichotropidae: *Lyocyclus*
 Triphoridae: *Euthymella*
 Trochaclididae: *Trochaclis*
 Trochidae: *Callumbonella*, *Calotropis*, *Margarella*, *Margaritella*, *Margaritopsis*, *Mörchiella* [*Moerchiella*], *Nanula*, *Prothalotia*, *Pseudostomatella*, *Umbotrochus*
 Turbinidae: *Bothropoma*, *Subninella*
 Turridae: *Acrobela*, *Anticlinura*, *Benthomangelia*, *Citharella*, *Clinuropsis*, *Fusiturris*, *Micropleurotoma*, *Ptychobela*, *Ptychosyrinx*, *Typhlosyrinx*
 Turritellidae: *Mesaliopsis*, *Protomella*
 Vermetidae: *Segmentella*
 Vitrinellidae: *Microdiscula*
 Viviparidae: *Callinina*
 Volutidae: *Harpovoluta*

Opisthobranchia

- Actaeonidae: *Metactaeon*, *Neactaeonina*, *Pseudactaeon*
 Atyidae: *Haminella*
 Cadlinidae: *Cadlinella*
 Charcotiidae: *Pseudotritonia*
 Coryphellidae: *Himatina*
 Diaphanidae: *Odostomiopsis*
 Dorididae: *Cadlinella*
 Dotonidae: *Iduliella*
 Echinochilidae: *Cadlinella*
 Flabellinidae: *Himatina*
 Goniaeolididae: *Goniaeolis*
 Haminoeidae: *Haminella*
 Hedyliidae: *Hedylopsis*, *Parhedyle*
 Hedylopsidae: *Hedylopsis*
 Iduliidae: *Iduliella*

Lamellidoridae: *Prodoridunculus*
 Microhedylidae: *Parhedyle*
 Notaeolidiidae: *Pseudotrionia*
 Notodiaphanidae: *Diaphanella*, *Notodiaphana*
 Onchidoridae: *Prodoridunculus*
 Oxynoidae: *Lophopleura*
 Philinidae: *Lophopleura*
 Pleurobranchidae: *Pleurobranchella*
 Polyceridae: *Prodoridunculus*
 Retusidae: *Pyrunculus*, *Semiretusa*, *Utrriculastra*
 Scaphandridae: *Sphaerocylichna*

Pulmonata

Ariophantidae: *Ariocaelatura*, *Conibycus*, *Durgellina*, *Hemiglyptopsis*, *Parasitala*, *Rhinocochlis*, *Sitalina*, *Sitalinopsis*, *Striakaliella*
 Bulimulidae: *Macrodontopsis*, *Scansicochlea*
 Camaenidae: *Baudinella*
 Clausiliidae: *Proreinia*, *Roseniella*
 Ellobiidae: *Cassidulella*, *Cassidulina*
 Endodontidae: *Garrettina*, *Nesodiscus*, *Notodiscus*, *Paryphantopsis*
 Enidae: *Paracerastus*, *Rhachidina*, *Zebrinops*
 Euconulidae: *Conibycus*, *Durgellina*, *Parasitala*, *Sitalina*
 Haplotrematidae: *Proselenites*
 Helicarionidae: *Ariocaelatura*, *Hemiglyptopsis*, *Sitalinopsis*
 Lymnaeidae: *Pseudisidora*
 Odondostomidae: *Macrodontopsis*
 Orculidae: *Pagodinella*
 Planorbidae: *Afroplanorbis*
 Pleurodontidae: *Baudinella*
 Polygyridae: *Daedalocheila*
 Streptaxidae: *Afristreptaxis*, *Augustula*, *Macrogonaxis*, *Mirellia*, *Paucidentella*, *Pseudogonaxis*
 Subulinidae: *Ochrodermatina*, *Striosubulina*
 Systrophiidae: *Microhappia*, *Prohappia*, *Proselenites*
 Urocoptidae: *Spiraxilla*
 Vaginulidae: *Novovaginula*
 Vertiginidae: *Pagodinella*
 Vitrinidae: *Arabivitrina*
 Zonitidae: *Geodiaphana*

CEPHALOPODA

Alluroteuthidae: *Parateuthis*

Gonatidae: "*Berryiteuthis*"

Psychroteuthidae: *Psychroteuthis*

Sepiidae: *Acanthosepia*, *Ascarosepia*, *Doratosepia*, *Lophosepia*, *Rhombosepia*,
Spathidosepia

Vampyroteuthidae: *Hymenoteuthis*

ALPHABETICAL LISTING OF GENUS-GROUP NAMES:

Acanthochiton Thiele 1929.

Handbuch der systematischen Weichtierkunde, 1(1): 14; emendation pro *Acanthochitona* Gray 1821, as genus; A. G. Smith 1960: 169 credited the spelling to Iredale 1915 and listed the name as a "*nomen vanum*." Cryptoplacidae [Acanthochitonidae, teste A. G. Smith 1960: 169]. Polyplacophora.

Acanthomenia Thiele 1913d.

Deutsche Südpolar-Expedition 1901-1903, 14(6)(1): 61; as new genus. Type-species by monotypy: *Acanthomenia gaussiana* Thiele 1913. Lepidomeniidae [Acanthomeniidae, teste Boss 1982: 952]. Aplacophora.

Acanthosepia Thiele 1934.

Handbuch der systematischen Weichtierkunde, 2(3): 954; emendation pro *Acanthosepion* Rochebrune 1884; as section of *Sepia* Linnaeus 1758. Sepiidae. Cephalopoda.

Acreuciroa Thiele in Thiele & Jaeckel 1931b.

Wissenschaftliche Ergebnisse der deutschen Tiefsee-Expedition . . . "Valdivia", 21(1): 250 (92); as new section of *Euciroa* Dall 1881 [subgenus of *Euciroa*, teste Keen in Moore 1969: N857]. Type-species by monotypy: *Euciroa (Acreuciroa) rostrata* Thiele in Thiele & Jaeckel 1931b. Subsequently attributed to Jaeckel & Thiele, Thiele & Jaeckel, and to Thiele alone by various authors. Verticordiidae. Bivalvia.

Acrobela Thiele 1925b.

Wissenschaftliche Ergebnisse der deutschen Tiefsee-Expedition . . . "Valdivia", 17(2): 238 [204]; as new subgenus of *Bela* Gray 1847 [genus, teste Thiele 1929: 362]. Type-species by original designation: *Bela (Acrobela) optima* Thiele 1925. Pleurotomidae [Conidae, teste Thiele 1929: 362; Turridae, teste Wenz 1943: 1413]. Gastropoda: Prosobranchia.

Adamussium Thiele 1934.

Handbuch der systematischen Weichtierkunde, 2(3): 807; as new genus. Type-species by monotypy: *Adamussium colbecki* (E. Smith) [*Pecten colbecki* E. A. Smith 1902: 212, pl. 25 fig. 11]. Pectinidae. Bivalvia.

Adriella Thiele in Troschel & Thiele 1893e.

Das Gebiss der Schnecken, 2(8): 391; as new genus [= *Trachydermon* Carpenter 1864, teste Thiele 1909d: 4; = *Lepidochitona* Gray 1821, s.s., teste Thiele 1929: 8]. Type-species by monotypy: *Adriella variegata* Philippi [*Chiton variegatus* Philippi 1836, p. 107; 1844: 83, pl. 19 fig. 13; non Röding 1798, nec de Blainville 1825, nec Leach 1852; = *Lepitochitona cinerea* (Linnaeus 1767), teste Kaas & Belle 1980: 138]. Chitonidae [Ischnochitonidae, teste A. G. Smith 1960: 156, Belle 1983: 96]. Polyplacophora.

Afristreptaxis Thiele 1932a.

Archiv für Molluskenkunde, 64(1): 12; as new genus [= *Eustreptaxis* L. Pfeiffer 1878, teste Zilch 1960: 559]. Type-species by original designation: *vosseleri* (Thiele) [*Streptaxis vosseleri* Thiele 1911]. Streptaxidae. Gastropoda: Pulmonata.

Afroplanorbis Thiele 1931c.

Handbuch der systematischen Weichtierkunde, 1(2): 480; as new section of *Planorbis* O. F. Müller 1774. Type-species by original designation: *sudanicus* Martens [*Planorbis sudanicus* Martens 1870: 35]. Planorbidae. Gastropoda: Pulmonata.

Alcidiella Thiele 1929.

Handbuch der systematischen Weichtierkunde, 1(1): 163; nomen novum pro *Alcidia* Monterosato 1890, non Westwood 1879, nec Bourguignat 1889 [Thiele apparently renamed this without knowing of the emendation to *Alcidiella* by Cossmann (1921)]. Rissoidae. Gastropoda: Prosobranchia.

Aliger Thiele 1929.

Handbuch der systematischen Weichtierkunde, 1(1): 254; as new section of *Strombus* (*Strombus*) Linnaeus 1758. Type-species by monotypy: *Strombus (Aliger) gallus* Linnaeus [*Strombus gallus* Linnaeus 1758: 743]. Strombidae. Gastropoda: Prosobranchia.

"*Amathinoides*" [1929].

Handbuch der systematischen Weichtierkunde, 1(1): 246; error pro *Amanthinoides* Sacco, 1896; as subgenus of *Thyca* H. & A. Adams 1854. Capulidae. Gastropoda: Prosobranchia.

Amaurochiton Thiele in Troschel & Thiele 1893e.

Das Gebiss der Schnecken, 2(8): 362; as new genus [= *Chiton* Linnaeus 1758, s.s., teste Thiele 1909d: 2, and Belle 1983: 123; = section of *Chiton* s.s., teste Thiele 1929: 19; subgenus of *Chiton*, teste A. G. Smith 1960: 166]. Type-species by subsequent designation (Kobelt 1894: 26): *Chiton olivaceus* [Frembly 1827: 199, Suppl. pl. 16 fig. 4], non Spengler 1797, [= *striatus* Barnes 1824, non Brusina 1870; = *magnificus* Deshayes 1822, = *latus* G. B. Sowerby I 1825, non Lowe 1825, nec Leach 1852, = *murrayi* Haddon 1886, teste Kaas & Belle 1980: 125]. Chitonidae. Polyplacophora.

Amphimienia Thiele 1894b.

Zeitschrift für wissenschaftliche Zoologie, 58(2): 244, 272; as new subgenus of *Proneomenia* Hubrecht 1880 [genus, teste Thiele 1913e: x, 39]. Type-species by monotypy: *Proneomenia neapolitana* Thiele 1894. [Proneomeniidae, teste Thiele, 1913e: x, 39; Amphimeniidae, teste Boss 1982: 952]. Aplacophora.

Anthochiton Thiele in Troschel & Thiele 1893e.

Das Gebiss der Schnecken, 2(8): 377; as new genus [= *Chiton* (*Clathropleura*), teste Thiele 1909d: 3; = section of *Chiton* (*Rhyssoptax*) Thiele 1893, teste Thiele 1929: 20; = *Chiton* (*Rhyssoptax*), teste A. G. Smith 1960: 165, Belle 1983: 124]. Type-species by monotypy: *Anthochiton tulipa* Quoy & Gaimard [*Chiton tulipa* Quoy & Gaimard 1835: 389, pl. 74 figs. 35, 36 = *C. tulipa alfredensis* Ashby 1828, teste Kaas & Belle 1980: 135]. Chitonidae [Ischnochitonidae, teste Belle 1983: 124]. Polyplacophora.

Anticlinura Thiele 1934.

Handbuch der systematischen Weichtierkunde, 2(3): 1002; nomen novum pro *Clinuropsis* Thiele 1929 (*q.v.*), non *Clinuropsis* E. Vincent 1913; [subgenus of *Pleurotomella*, teste Wenz 1943: 1460]. Conidae [Turridae, teste Wenz 1943: 1460]. Gastropoda: Prosobranchia.

Appisania Thiele 1929.

Handbuch der systematischen Weichtierkunde, 1(1): 314; as new section of *Metula* H. & A. Adams 1853 [subgenus of *Metula*, teste Wenz 1941: 1195]. Type-species by monotypy: *Metula (Appisania) montrouzieri* (Crosse) [*Pisania montrouzieri* Crosse 1862: 251, pl. 10 fig. 5 [sic, 7]]. Buccinidae. Gastropoda: Prosobranchia.

Arabivitrina Thiele 1931c.

Handbuch der systematischen Weichtierkunde, 1(2): 600; as new

section of *Vitrina* Draparnaud 1801 [subgenus of *Phenacolimax*, teste Zilch 1959: 238]. Type-species by monotypy: *Vitrina (Arabivitrina) arabica* Thiele [*Vitrina arabica* Thiele 1910]. Vitrinidae. Gastropoda: Pulmonata.

***Archaeomenia* Thiele 1906c.**

Wissenschaftliche Ergebnisse der deutschen Tiefsee-Expedition . . . "Valdivia", 9(2): 315 ff. [1 ff.]; as new genus. Type-species by monotypy: *Archaeomenia prisca* Thiele 1906. [Neomeniidae, teste Thiele 1913e: x, 27; Hemimeniidae, teste Boss 1982: 950]. Aplacophora.

***Arcopella* Thiele 1934.**

Handbuch der systematischen Weichtierkunde, 2(3): 914; as new section of *Arcopagia (Arcopagia)* T. Brown 1827 [listed by Thiele as "Sectio *Arcopella* Monterosato in sched.,"; subgenus of *Tellina* Linnaeus 1758, teste Keen in Moore, 1969: N614]. Type-species by monotypy: *Arcopagia (Arcopella) balaustina* (Linné) [*Tellina balaustina* Linnaeus, 1758: 676]. Tellinidae. Bivalvia.

***Arctinula* Thiele 1934.**

Handbuch der systematischen Weichtierkunde, 2(3): 806; as new section of *Propeamussium (Palliolium)* Monterosato 1884 [synonym of *Pecten (Delectopecten)* Stewart 1930, teste Hertlein in Moore 1969: N354]. Type-species by monotypy: *Propeamussium (Arctinula) groenlandicum* [sic] (Sowerby) [*Pecten groenlandicus* G. B. Sowerby II 1842: 57, pl. 13 fig. 40]. Pectinidae. Bivalvia.

***Ariocaelatura* "Germain" Thiele 1931c.**

Handbuch der systematischen Weichtierkunde, 1(2): 615; non Germain 1921 [Zilch (1959: 307) listed *Pseudocaelatura* Wenz 1947, with *Ariocaelatura* Thiele 1931, non Germain 1921, as a synonym; Zilch (1960: 730) noted that *Pseudocaelatura* Wenz 1947 was preoccupied by *Pseudocaelatura* Germain 1921, and replaced the name by *Dancea*; subgenus of *Dancea* Zilch 1960, teste Vaught 1989: 96]. See Introduction, p. 5. Ariophantidae [Helicarionidae, teste Zilch 1959: 307]. Gastropoda: Pulmonata.

***Aristochiton* Thiele 1909d.**

Zoologica, 22(56/1): 35; as new genus [= *Craspedochiton* Shuttleworth 1853, teste A. G. Smith 1960: I69; = *Notoplax* H. Adams 1861, teste Kaas & Belle 1980: 60]. Type-species by monotypy: *Aristochiton hirtus* Thiele 1909. [Cryptoplacidae, teste Thiele 1909i: 116; Acanthochitonidae, teste A. G. Smith 1960: I69, Belle 1983:

144]. Polyplacophora.

Ascarosepia Thiele 1934.

Handbuch der systematischen Weichtierkunde, 2(3): 954; emendation pro *Ascarosepion* Rochebrune 1884; as section of *Sepia* Linnaeus, 1758. Sepiidae. Cephalopoda.

Augustula Thiele 1931c.

Handbuch der systematischen Weichtierkunde, 1(2): 727; as new genus. Type-species by monotypy: *Imperturbatia braueri* Martens [*Streptaxis (Imperturbatia) braueri* Martens in Martens & Wiegmann 1898: 13, pl. 2 fig. 8]. Streptaxidae. Gastropoda: Pulmonata.

Austropilula Thiele 1927a.

Zoologische Jahrbücher, 53(1/3): 122, 126; as new section of *Assiminea* Fleming 1828 [subgenus of *Assiminea*, teste Wenz 1939: 634]. Type-species by original designation: *Assiminea beddomeana* Nevill [G. Nevill 1880: 163; 1881a: 158, pl. 7 fig. 3]. Assimineidae. Gastropoda: Prosobranchia.

Bacteridium Thiele 1929.

Handbuch der systematischen Weichtierkunde, 1(1): 236; as new subgenus of *Eulimella* Gray 1847 [genus, teste Wenz 1940: 867]. Type-species by monotypy: *Eulimella (Bacteridium) praeclara* Thiele [*Eulimella praeclara* Thiele 1925]. Pyramidellidae. Gastropoda: Prosobranchia.

Bathydomus Thiele 1912b.

Deutsche Südpolar-Expedition 1901-1903, 13(5): 247; as new genus [section of *Chlanidota* Martens 1878, teste Thiele 1929: 315; subgenus of *Chlanidota*, teste Wenz 1943: 1201]. Type-species by monotypy: *Bathydomus obtectus* Thiele 1912. [Buccinidae, teste Thiele 1929: 315]. Gastropoda: Prosobranchia.

Batillariella Thiele 1929.

Handbuch der systematischen Weichtierkunde, 1(1): 208; as new subgenus of *Batillaria* Benson 1842. Type-species by monotypy: *Batillaria (Batillariella) estuarina* (Tate) [*Bittium estuarinum* Tate 1893: 190, pl. 5 fig. 12]. Potamididae. Gastropoda: Prosobranchia.

Baudinella Thiele 1931c.

Handbuch der systematischen Weichtierkunde, 1(2): 685; as new section of *Angasella* A. Adams 1863 [subgenus of *Angasella*, teste Zilch 1960: 619]. Type-species by monotypy: *Angasella (Baudinella) baudinensis* (E. Smith) [*Helix (Gonostoma) baudinensis* E. A. Smith

1893: 97]. Pleurodontidae [Camaenidae, teste Zilch 1960: 619].
Gastropoda: Pulmonata.

Beanella "Dall" Thiele in Troschel & Thiele 1893e.

Das Gebiss der Schnecken, 2(8): 388; non Dall 1882 [as synonym, listed as *Beanella* Dall 1881, nomen nudum, of *Middendorffia* Dall 1882; Boss, Rosewater & Ruhoff 1968, listed *Beanella* Dall as of 1882, a new name for *Beania* "Carpenter" Dall 1879; *Beanella* Thiele = *Ischnochiton* Gray 1847, teste A. G. Smith 1960: 155; = *Leptochiton* Gray 1847, s.s., teste Belle 1983: 52, with *rissoi* Payraudeau 1826 [= *Chiton algesirensis* Capellini, 1859] as type species by subsequent designation]. [Lepidochitonidae, teste Thiele 1929: 9; Ischnochitonidae, teste A. G. Smith 1960: 155; Leptochitonidae, teste Kaas & Belle 1985: 36]. See Introduction, p. 5. Polyplacophora.

Benthomangelia Thiele 1925b.

Wissenschaftliche Ergebnisse der deutschen Tiefsee-Expedition . . . "Valdivia", 17(2): 208 [174], 220, 225; as new section of *Mangelia* Risso 1826 [subgenus of *Cythara* Schumacher 1817, teste Thiele 1929: 367]. Type-species by original designation: *Mangelia trophonoidea* (Schepman) [*Surcula trophonoidea* Schepman 1911 [1913]: 426, pl. 28 fig. 3]. Pleurotomidae [Conidae, teste Thiele 1929: 367; Turridae, teste Wenz 1943: 1437]. Gastropoda: Prosobranchia.

"*Berryteuthis*" [1926b].

Handbuch der Zoologie, 5(3): 252; error pro *Berryteuthis* Naef 1923. Gonatidae. Cephalopoda.

Boogina Thiele 1913a.

Zentralblatt für Zoologie, 2(3): 86; nomen novum pro *Watsonella* Thiele 1912 (*q.v.*), non Grabau 1900. Rissoidae. Gastropoda: Prosobranchia.

Bothropoma Thiele 1924a.

Mitteilungen aus dem Zoologischen Museum in Berlin, 11(1): 63, 71; as new genus. Type-species by monotypy: *Bothropoma isseli* Thiele 1924. Turbinidae [Cyclostrematidae, teste Thiele 1925d: 76]. Gastropoda: Prosobranchia.

Brevinucula Thiele 1934.

Handbuch der systematischen Weichtierkunde, 2(3): 786; as new subgenus of *Nucula* Lamarck 1799 [genus, teste Keen in Moore 1969: N231]. Type-species by monotypy: *Nucula (Brevinucula)*

guineensis Thiele [*Nucula guineensis* Thiele & Jaeckel 1931].
Nuculidae. Bivalvia.

***Buccinella* Thiele 1912b.**

Deutsche Südpolar-Expedition 1901-1903, 13(2): 244, 246; as new genus [non *Buccinella* Perry 1811; *Buccinella* Thiele replaced by *Fusinella* Thiele 1917, (*q.v.*)]. Type-species by original designation: *Buccinella jucunda* Thiele 1912. Buccinidae. Gastropoda: Prosobranchia.

***Bufonariella* Thiele 1929.**

Handbuch der systematischen Weichtierkunde, 1(1): 284; "nomen novum" [error pro "new section"?]; listed as section [subgenus of *Bursa* Röding 1798, teste Wenz 1941: 1072]. Type-species by monotypy: *Bursa (Bufonariella) scrobiculator* (Linnaeus) [*Murex scrobiculator* Linnaeus 1758]. Bursidae. Gastropoda: Prosobranchia.

***Cadlinella* Thiele 1931c.**

Handbuch der systematischen Weichtierkunde, 1(2): 431; as new genus. Type-species by monotypy: *Cadlinella ornatissima* (Risbec) [*Cadlina ornatissima* Risbec 1928: 163, text-fig. 47, pl. 8 fig. 4]. Dorididae [Echinochilidae, teste Odhner in Franc, 1968: 866; Cadlinidae, teste Vaught 1989: 89]. Gastropoda: Opisthobranchia.

***Callinina* Thiele 1931c.**

Handbuch der systematischen Weichtierkunde, 1(2): 747; nomen novum pro *Callina* Hannibal 1912 [as listed by Thiele 1929: 114], non Lowe 1855; subgenus of *Viviparus* Montfort 1810, teste Wenz 1939: 490]. See also Tomlin 1936: 136. Viviparidae. Gastropoda: Prosobranchia.

***Calloplax* Thiele 1909d.**

Zoologica, 22(56/1): 19; as new genus [subgenus of *Callistochiton* Dall 1879, teste Belle 1983: 82]. Type-species by monotypy: *Chiton janeirensis* Gray 1828 [p. 6, pl. 3 fig. 8]. [Ischnochitonidae, teste Thiele 1909i: 116; Chaetopleuridae, teste A. G. Smith 1960: I62]. Polyplacophora.

***Callumbonella* Thiele 1924a.**

Mitteilungen aus dem Zoologischen Museum in Berlin, 11(1): 58, 69; nomen novum pro *Umbotrochus* (Monterosato MS) Thiele 1924 (*q.v.*), non Perner 1904. Trochidae. Gastropoda: Prosobranchia.

***Calotropis* Thiele 1929.**

Handbuch der systematischen Weichtierkunde, 1(1): 49; nomen novum pro *Calliotropis* Oliver 1926, non Seguenza, 1903; as section of *Calliostoma* Swainson 1840, s.s. Trochidae. Gastropoda: Prosobranchia.

***Carinolacuna* Thiele 1929.**

Handbuch der systematischen Weichtierkunde, 1(1): 122; as new subgenus of *Lacuna* Turton 1827 [genus, teste Wenz 1939: 513]. Type-species by monotypy: *Lacuna (Carinolacuna) carinifera* A. Adams [*Lacuna carinifera* A. Adams 1851 [1853]: 225]. Lacunidae. Gastropoda: Prosobranchia.

***Caspiella* Thiele 1928c.**

Zoologische Jahrbücher, 55(5-6): 353, 381; as new genus. Type-species by original designation: *Rissoa conus* Eichwald [1838: 155]. Micromelaniidae or Hydrobiidae [?Micromelaniidae, teste Thiele 1929: 159; Micromelaniidae, teste Wenz 1939: 606]. Gastropoda: Prosobranchia.

***Cassidulella* Thiele 1934.**

Handbuch der systematischen Weichtierkunde, 2(3): 1004; nomen novum pro *Cassidulina* Thiele 1931 (*q.v.*); non *Cassidulina* Orbigny 1826; non *Cassidulella* Strand 1928, which was replaced by *Cassidulta* Strand 1942 [= *Cassidulta* Strand 1942, teste Zilch 1959: 76]. Ellobiidae. Gastropoda: Pulmonata.

***Cassidulina* Thiele 1931c.**

Handbuch der systematischen Weichtierkunde, 1(2): 467; as new subgenus of *Cassidula* Férrussac 1821 [non *Cassidulina* Orbigny 1826; *Cassidulina* Thiele replaced by *Cassidulella* Thiele 1934 (*q.v.*); = *Cassidulta* Strand 1942, teste Zilch 1959: 76]. Type-species by monotypy: *Cassidula (Cassidulina) doliolum* (Petit) [*Auricula doliolum* Petit de la Saussaye, 1843: 201]. Ellobiidae. Gastropoda: Pulmonata.

***Cerithideopsilla* Thiele 1929.**

Handbuch der systematischen Weichtierkunde, 1(1): 206; as new section of *Cerithidea* (*Cerithideopsis*) Thiele 1929 (*q.v.*) [subgenus of *Cerithidea* Swainson 1840, teste Wenz 1940: 742]. Type-species by monotypy: *Cerithidea (Cerithideopsilla) fluviatilis* (Potiez & Michaud) [*Cerithium fluviatile* Potiez & Michaud 1838: 363, pl. 31 figs. 19, 20; = *Murex cingulata* Gmelin 1791, teste Wenz 1940: 742]. Potamididae. Gastropoda: Prosobranchia.

***Cerithideopsis* Thiele 1929.**

Handbuch der systematischen Weichtierkunde, 1(1): 206; as new subgenus and section of *Cerithidea* Swainson 1840 [subgenus of *Cerithidea*, teste Wenz 1940: 742]. Type-species by monotypy: *Cerithidea* (*Cerithideopsis*) *iostoma* (Pfeiffer) [*Potamides iostomus* L. Pfeiffer 1839: 357]. Potamididae. Gastropoda: Prosobranchia.

Cerithiopsilla Thiele 1912b.

Deutsche Südpolar-Expedition 1901-1903, 13(2): 202, 204; as new subgenus of *Cerithiopsis* Forbes & Hanley 1849, or as new genus [subgenus of *Cerithiopsis*, teste Thiele 1925b: 121 [87]]. Type-species by original designation: *Cerithiopsilla cincta* Thiele 1912. Cerithiopsidae [Cerithiidae, teste Powell 1960: 140]. Gastropoda: Prosobranchia.

Charoniella Thiele 1929.

Handbuch der systematischen Weichtierkunde, 1(1): 283; as new section of *Charonia* Gistel 1848; non *Charoniella* Powell & Bartrum 1929; [synonym of *Negyriina* Iredale 1929, teste Wenz 1941: 1066]. Type-species by monotypy: *Charonia* (*Charoniella*) *subdistorta* (Lamarck) [*Triton subdistortum* Lamarck 1822: 186]. Cymatiidae [= Ranellidae]. Gastropoda: Prosobranchia.

Chlanidotella Thiele 1929.

Handbuch der systematischen Weichtierkunde, 1(1): 317; as new subgenus of *Thalassoplanes* Dall 1908. Type-species by monotypy: *Thalassoplanes* (*Chlanidotella*) *modesta* (Martens) [*Cominella modesta* Martens 1885: 91]. Buccinidae. Gastropoda: Prosobranchia.

Chondroplax Thiele in Troschel & Thiele 1893e.

Das Gebiss der Schnecken, 2(8): 363; as new genus [section of *Chiton*, teste Thiele 1909d: 2, 5; = *Chiton* s.s. Linnaeus 1758, teste A. G. Smith 1960: 165; Belle 1983: 123]. Type-species by subsequent designation (Kobelt 1894: 26): *Chiton granosus* [Frembly 1827: 200, suppl. pl. 17 fig. 1]. Chitonidae. Polyplacophora.

Chondropleura Thiele 1906d.

Wissenschaftliche Ergebnisse der deutschen Tiefsee-Expedition . . . "Valdivia", 9(2): 334; as new subgenus of *Ischnochiton* Gray 1847 [= *Ischnochiton* (*Stenosemus*) Middendorff 1847, teste Belle 1980: 69; Kaas & Belle 1990: 60]. Type-species by subsequent designation (A. G. Smith 1960: 156): *Lophyrus exaratus* G. O. Sars 1878 [p. 113, pl. 3 fig. 1]. [Ischnochitonidae, teste Thiele 1929: 18]. Polyplacophora.

Chuniscalia Thiele 1928d.

Zeitschrift für wissenschaftliche Zoologie, 132: 93; new subgroup of *Scala* (Klein 1753) Bruguière 1792 [= *Epitonium* Röding 1798] [section of *Scala* (*Cirsotrema*) Mörch 1852, teste Thiele 1929: 222; subgenus of *Cirsotrema*, teste Wenz 1940: 798]. Type-species by original designation: *Scala agulhasensis* Thiele 1925. Scalidae [= Epitoniidae]. Gastropoda: Prosobranchia.

***Chunula* Thiele 1925b.**

Wissenschaftliche Ergebnisse der deutschen Tiefsee-Expedition . . . "Valdivia", 17(2): 62 [28], 58 [24]; as new genus [nom. nud. in Thiele 1924a: 60, 71]. Type-species by original designation: *Chunula typica* Thiele 1925. Cyclostrematidae. Gastropoda: Prosobranchia.

***Cilara* Thiele 1924b.**

Archiv für Molluskenkunde, 56(5): 202, 210; as new section of *Pyrene* (*Mitrella*) Risso 1826 [subgenus of *Mitrella*, teste Wenz 1941: 1139]. Type-species by monotypy: *Buccinum secalinum* Philippi [1846: 53]. Columbellidae. Gastropoda: Prosobranchia.

***Cirsotremopsis* Thiele 1928d.**

Zeitschrift für wissenschaftliche Zoologie, 132: 92; as new section of *Scala* (Klein 1753) Bruguière 1792 [= *Epitonium* Röding 1798] [sect. of *Scala* (*Cirsotrema*) Mörch 1852, teste Thiele 1929: 222; subgenus of *Cirsotrema*, teste Wenz 1940: 795]. Type-species by monotypy: *Scalaria cochlea* Sowerby [G. B. Sowerby II 1844: 103, pl. 35 fig. 142]. Scalidae [= Epitoniidae]. Gastropoda: Prosobranchia.

***Citharella* Thiele 1929.**

Handbuch der systematischen Weichtierkunde, 1(1): 366; probable emendation pro *Cyharella* Monterosato 1875; as section of subgenus *Cythara* Schumacher 1817 s.s. [Wenz 1943: 1432 listed this as *Cyharella*, a subgenus of *Cythara*; the spelling *Cyharella* by Monterosato was considered a *lapsus calami* by Wenz (1943: 1432)]. Conidae [Turridae, teste Wenz 1943: 1432]. Gastropoda: Prosobranchia.

***Clathropleura* "Tiberi" Thiele in Troschel & Thiele 1893e.**

Das Gebiss der Schnecken, 2(8): 367; non Tiberi 1877 [*Clathropleura* Tiberi 1887 *part.* = *Chiton* (*Rhyssoplax*) Thiele 1893, teste Thiele 1929: 20; *Clathropleura* Thiele 1893, non Tiberi 1877, = *Rhyssoplax*, teste Belle: 90]. Type species by original designation: *Chiton siculus* Gray 1828 [p. 5]. See Introduction, p. 5. Polyplaco-

phora.

Clathrotellina Thiele 1934.

Handbuch der systematischen Weichtierkunde, 2(3): 917; as new subgenus of *Merisca* Dall 1900 [subgenus of *Tellina* Linnaeus 1758, teste Keen 1969: N615]. Type-species by monotypy: *Merisca (Clathrotellina) pretiosa* (Deshayes) [*Tellina pretiosa* Deshayes 1855: 360, non Eichwald 1830; = *T. pretium* Salisbury 1934]. Tellinidae. Bivalvia.

"*Cleovitrea*" [1931c].

Handbuch der systematischen Weichtierkunde, 1(2): 739; error pro *Cleotrivia* Iredale 1930 [corrected by Thiele 1934: 1010]. Cypraeidae [Triviidae, teste Vaught 1989: 34]. Gastropoda: Prosobranchia.

Clinuropsis Thiele 1929.

Handbuch der systematischen Weichtierkunde, 1(1): 372; as new section of *Pleurotomella* Verrill 1873 [non *Clinuropsis* E. Vincent 1913; *Clinuropsis* Thiele replaced by *Anticlinura* Thiele 1934, (q.v.)]. Type-species by original designation: *Clinura monochorda* Dall [1908: 214, 292, pl. 13 fig. 1]. Conidae [Turridae, teste Wenz 1943: 1460]. Gastropoda: Prosobranchia.

Cocculinella Thiele 1909g.

Systematisches Conchylien-Cabinet von Martini und Chemnitz, 2(11a): 21; as new genus. Type-species by monotypy: *Acmaea minutissima* E. Smith 1904 [E. A. Smith 1904b: 4]. Lepetellidae. Gastropoda: Prosobranchia.

Conacmella Thiele 1927a.

Zoologische Jahrbücher, 53: 123, 126; as new genus. Type-species by original designation: *Acmella vagans* Pilsbry [(Pilsbry MS) Thiele 1927]. Assimineidae. Gastropoda: Prosobranchia.

Conasprella Thiele 1929.

Handbuch der systematischen Weichtierkunde, 1(1): 373; as new subgenus of *Conus* Linnaeus 1758 [subjective synonym of *Hemiconus* Cossmann 1889, teste Wenz 1943: 1466]. Type-species by monotypy: *Conus (Conasprella) cancellatus* Bruguière [*Conus cancellatus* Hwass in Bruguière 1792: 712-713]. Conidae. Gastropoda: Prosobranchia.

Conibycus Thiele 1928a.

Zoologische Jahrbücher, 55(1-3): 136; as new genus. Type-species by original designation: *Conibycus dahli* Thiele 1928. Ariophantidae

[Euconulidae, teste Zilch 1959: 282]. Gastropoda: Pulmonata.

***Crossilla* Thiele 1927a.**

Zoologische Jahrbücher, 53(1-3): 123, 126; as new section of *Assimineae* Fleming 1828 [subgenus of *Assimineae*, teste Wenz 1939: 633]. Type-species by original designation: *Assimineae caledonica* (Crosse) [*Hydrocena caledonica* Crosse 1869: 24, pl. 2 fig. 4]. Assimineidae. Gastropoda: Prosobranchia.

***Cubaedomus* Thiele 1928c.**

Zoologische Jahrbücher, 55(5-6): 397, 401; as new subgenus of *Hemisinus* Swainson 1840. Type-species by monotypy: *Melania brevis* Orbigny [*Melania brevis* A. Orbigny in Sagra 1842: 10; non I. Lea 1842]. Melaniidae [Thiaridae, teste Wenz 1939: 719]. Gastropoda: Prosobranchia.

***Daedalocheila* Thiele 1931.**

Handbuch der systematischen Weichtierkunde, 1(2): 580; emendation pro *Daedalocheila* Beck 1837; as subgenus of *Polygyra* Say 1818. Polygyridae. Gastropoda: Pulmonata.

***Diaphanella* Thiele 1912b.**

Deutsche Südpolar-Expedition 1901-1903, 13(2): 277; as new group [non *Diaphanella* Clessin 1880; *Diaphanella* Thiele replaced by *Notodiaphana* Thiele 1917 (*q.v.*); non *Diaphanella* P. Hesse 1916, replaced by *Geodiaphana* Thiele 1917 (*q.v.*)]. Type-species by monotypy: *Bulla fragilis* Vélain [1877: 128, pl. 4 fig. 31]. [Notodiaphanidae, teste Thiele 1931c: 383]. Gastropoda: Opisthobranchia.

***Diochiton* Thiele in Troschel & Thiele 1893e.**

Das Gebiss der Schnecken, 2(8): 364; as new genus [= *Chiton* Linnaeus 1758, s.s., teste Thiele 1909d: 2, A. G. Smith 1960: 165, and Belle 1983: 123; = section of *Chiton* s.s., teste Thiele 1929: 20]. Type-species by monotypy: *Diochiton albilineatus* [sic] Sowerby [*Chiton albolineatus* Broderip & G. B. Sowerby I 1829: 368]. Chitonidae. Polyplacophora.

***Dioeciostrea* Thiele 1934.**

Handbuch der systematischen Weichtierkunde, 2(3): 814; emendation pro *Dioeciostrea* Orton 1928, as synonym of *Ostrea* (*Crassostrea*) Sacco 1897; Stenzel (1971: N1128) listed this as a *nomen nullum* in the synonymy of *Crassostrea*. Ostreidae. Bivalvia.

***Doratosepia* Thiele 1934.**

Handbuch der systematischen Weichtierkunde, 2(3): 954; emendation pro *Doratosepion* Rochebrune 1884; as section of *Sepia* Linnaeus 1758. Sepiidae. Cephalopoda.

***Drupella* Thiele 1925b.**

Wissenschaftliche Ergebnisse der deutschen Tiefsee-Expedition . . . "Valdivia", 17(2): 171 [137]; as new subgenus of *Purpura* Bruguière 1789 [subgen. of *Drupa* Röding 1798, teste Thiele 1929: 295]. Type-species by designation under plenary powers (ICZN Opinion 1154, 1980: 85): *Purpura elata* Blainville 1832: 207, pl. 11 fig. 1]. Muricidae. Gastropoda: Prosobranchia.

***Durgellina* Thiele 1928a.**

Zoologische Jahrbücher, 55(1-3): 135; as new genus. Type-species by original designation: *Durgellina vitrina* Thiele 1928 [= *Helix calculosa* "Couthouy" Gould 1852, teste Zilch 1959: 281]. Ariophantidae [Euconulidae, teste Zilch 1959: 281]. Gastropoda: Pulmonata.

***Eatonina* Thiele 1912b.**

Deutsche Südpolar-Expedition 1901-1903, 13(2): 279; as new subgenus of *Eatoniella* Dall 1876 [genus, teste Thiele 1929: 167]. Type-species by monotypy: *Eatoniella (Eatonina) pusilla* Thiele 1912. [Rissoidea, teste Thiele 1925d: 80; Cingulopsidae, teste Ponder 1985: 100]. Gastropoda: Prosobranchia.

***Eatoniopsis* Thiele 1912b.**

Deutsche Südpolar-Expedition 1901-1903, 13(2): 237; as new genus [= *Skenella* Pfeffer 1886, teste Ponder 1985: 100]. Type-species by monotypy: *Eatoniella paludinooides* E. Smith [E. A. Smith 1902: 205, pl. 24 fig. 18]. [Rissoidea, teste Thiele 1925d: 80; Cingulopsidae, teste Ponder 1985: 100]. Gastropoda: Prosobranchia.

***Ebalina* Thiele 1929.**

Handbuch der systematischen Weichtierkunde, 1(1): 236; as new section of *Eulimella (Ebala)* Leach 1847 [subgenus of *Ebala*, teste Wenz 1940: 866]. Type-species by monotypy: *Eulimella (Ebalina) monolirata* (Folin) [*Aclis monolirata* de Folin in Fischer, de Folin & Périer 1872 [1873]: 178, pl. 7 fig. 6]. Pyramidellidae. Gastropoda: Prosobranchia.

"*Electromactra*" [1934].

Handbuch der systematischen Weichtierkunde, 2(3): 901; error pro *Electromactra* Iredale 1930, as section of *Mactra (Mactrella)* Gray

1853. Mactridae. Bivalvia.

Emmericiopsis Thiele 1928c.

Zoologische Jahrbücher, 55(5-6): 357, 380; as new section of *Bythinia* (*Gabbia*) Tryon 1865 [subgenus of *Bulimus* Scopoli 1777, teste Wenz 1939: 590]. Type-species by monotypy: *Pachydrobia lacustris* Martens [*Pachydrobia lacustris* Martens 1897: 26, pl. 9 figs. 12-15]. Hydrobiidae [Bulimidae, teste Wenz 1939: 590; = Bithyniidae]. Gastropoda: Prosobranchia.

Eosipho Thiele 1929.

Handbuch der systematischen Weichtierkunde, 1(1): 307; as new subgenus of *Sipho* Bruguière 1792 [genus, teste Wenz 1941: 1154]. Type-species by monotypy: *Sipho* (*Eosipho*) *smithi* (Schepman) [*Chrysodomus* (*Sipho*) *smithi* Schepman 1911: 300, pl. 19 fig. 6, pl. 23 fig. 11]. Buccinidae. Gastropoda: Prosobranchia.

Eumetula Thiele 1912b.

Deutsche Südpolar-Expedition 1901-1903, 13(2): 202, 205; as new subgenus of *Eumeta* Mörch 1868 [non Walker 1855] [synonym (p. 122 [88]) or probable synonym (p. 125 [91]) of *Metaxia* Monterosato 1884, teste Thiele 1925b; genus, teste Thiele 1929: 217]. Type-species by monotypy: *Eumeta* (*Eumetula*) *dilecta* Thiele 1912. Cerithiopsidae [Cerithiidae, teste Powell 1960: 140]. Gastropoda: Prosobranchia.

Euparthenia Thiele 1929.

Handbuch der systematischen Weichtierkunde, 1(1): 233; nomen novum pro *Parthenia* Lowe 1840 [*part.*], non Robineau-Desvoidy 1830; [subgenus of *Kleinella* A. Adams 1860, teste Wenz 1940: 850]. Pyramidellidae. Gastropoda: Prosobranchia.

Euthymella Thiele 1929.

Handbuch der systematischen Weichtierkunde, 1(1): 219; nomen novum pro *Euthymia* Jousseaume 1884, non Stål 1876 [subgenus of *Triphora* Blainville 1828, teste Wenz 1940: 786]. Triphoridae. Gastropoda: Prosobranchia.

Ficulina Thiele 1912b.

Deutsche Südpolar-Expedition 1901-1903, 13(2): 271; as new subgenus of *Cominella* Gray 1850 or as new genus [non *Ficulina* Gray 1867; *Ficulina* Thiele replaced by *Notoficula* Thiele 1917, (*q.v.*)]. Type-species by monotypy: *Chlanidota bouveti* Thiele 1912. [Buccinidae, teste Thiele 1929: 315]. Gastropoda: Prosobranchia.

Fossarella Thiele 1925b.

Wissenschaftliche Ergebnisse der deutschen Tiefsee-Expedition . . . "Valdivia", 17(2): 96 [62]; as new genus. Type-species by original designation: *Fossarella pacifica* Thiele 1925. Fossaridae. Gastropoda: Prosobranchia.

Frovina Thiele 1912b.

Deutsche Südpolar-Expedition 1901-1903, 13(2): 196; as new genus. Type-species by monotypy: *Frovina soror* Thiele 1912. [Naticidae, teste Thiele 1929: 259]. Gastropoda: Prosobranchia.

Fusinella Thiele 1917a.

Nachrichtenblatt der Deutschen Malakozologischen Gesellschaft, 49(1): 24; nomen novum pro *Buccinella* Thiele 1912 (*q.v.*), non Perry 1811. Buccinidae. Gastropoda: Prosobranchia.

Fusiturris Thiele 1929.

Handbuch der systematischen Weichtierkunde, 1(1): 361; as new section of *Turris* (*Turris*) O. F. Müller 1766 [sic] [subgenus of *Turris* Röding 1798, teste Wenz 1943: 1404]. Type-species by monotypy: *Turris* (*Fusiturris*) *undatiruga* (Bivona) [*Pleurotoma undatiruga* Bivona in Philippi 1844: 171, pl. 26 fig. 13]. Conidae [Turridae, teste Wenz 1943: 1404]. Gastropoda: Prosobranchia.

Garrettina Thiele 1931c.

Handbuch der systematischen Weichtierkunde, 1(2): 572; nomen novum pro *Garrettia* Cossmann 1900 non (Pease) Paetel 1873 [synonym of *Libera* Garrett 1881, teste Zilch 1959: 215; see also Pilsbry 1932: 70]. Endodontidae. Gastropoda: Pulmonata.

Geodiaphana Thiele 1917a.

Nachrichtenblatt der Deutschen Malakozologischen Gesellschaft, 49(1): 23; nomen novum pro *Diaphanella* P. Hesse 1916, non Clessin 1880, nec Thiele 1912 (*q.v.*); = *Hydatina* Westerlund 1886, non Schumacher 1817, nec Ehrenberg 1830 [= *Medierranea* Clessin 1880, teste Thiele 1931c: 590; subgenus of *Oxychilus* Fitzinger 1833, teste Zilch 1959: 254]. [Zonitidae, teste Thiele 1931c: 590]. Gastropoda: Pulmonata.

Georgus Thiele in Troschel & Thiele 1893e.

Das Gebiss der Schnecken, 2(8): 366; as new genus [= *Chiton* (*Clathropleura*), teste Thiele 1909d: 2, 5; = *Chiton* Linnaeus 1758, s.s., teste A. G. Smith 1960: 165, Belle 1983: 123]. Type-species by subsequent designation (Kobelt 1894: 26): *Chiton rusticus* [Deshayes 1863: 39, pl. 4 figs. 1-3; = *mauritanus* Quoy & Gaimard

1835, teste Belle 1983: 123]; Thiele (1909d: 2, 5) subsequently re-identified the material previously called *Chiton rusticus* as *Chiton (Clathropleura) angusticostatus* Quoy & Gaimard 1835, resulting in a misidentified type species in the sense of ICZN 1985, Art. 70]. Chitonidae. Polyplacophora.

Goniaeolis Thiele 1931c.

Handbuch der systematischen Weichtierkunde, 1(2): 450; emendation for *Goniöolis* M. Sars 1859 [Thiele (1931c: 450) also changed *Goniöolis* M. Sars 1859 to *Gonieolis*]. Goniaeolididae. Gastropoda: Opisthobranchia.

Gracilancilla Thiele 1925b.

Wissenschaftliche Ergebnisse der deutschen Tiefsee-Expedition . . . "Valdivia", 17(2): 188 [154]; as new subgenus of *Ancilla* Lamarck 1799. Type-species by original designation: *Ancilla sumatrana* Thiele 1925. Olividae. Gastropoda: Prosobranchia.

Gracilimurex Thiele 1929.

Handbuch der systematischen Weichtierkunde, 1(1): 289; as new subgenus of *Murex* Linnaeus 1758 [genus, teste Wenz 1941: 1087]. Type-species by monotypy: *Murex (Gracilimurex) bicolor* Thiele 1929. Muricidae. Gastropoda: Prosobranchia.

Haminella Thiele 1925b.

Wissenschaftliche Ergebnisse der deutschen Tiefsee-Expedition . . . "Valdivia", 17(2): 267 [233]; as new subgenus of *Haminea* Gray 1847 [subgenus of *Haminea* [sic] Turton & Kingston 1830, teste Zilch 1959: 42]. Type-species by original designation: *Haminea maltzani* Thiele 1925. Atyidae [Hamineidae [sic, Haminoeidae], teste Vaught 1989: 65]. Gastropoda: Opisthobranchia.

Harpovoluta Thiele 1912b.

Deutsche Südpolar-Expedition 1901-1903, 13(2): 213; as new genus. Type-species by original designation: *Harpovoluta vanhoeffeni* [vanhoeffeni] Thiele 1912. Volutidae. Gastropoda: Prosobranchia.

Heathia Thiele 1913e.

Das Tierreich, 38: ix, 17; as new genus. Type-species by monotypy: *Ichthyomenia porosa* Heath 1911 [p. 48, figs.]. Lepidomeniidae [Dondersiidae, teste Boss 1982: 949]. Aplacophora.

Hedylopsis Thiele 1931c.

Handbuch der systematischen Weichtierkunde, 1(2): 443; as new genus. Type-species by monotypy: *Hedylopsis spiculifera* (Ko-

walevsky) [*Hedyle spiculifera* Kowalevsky 1901b: 21-25, pl. 4 figs. 49-51, pl. 5 figs. 56-69]. Hedyliidae [Hedylopsidae, teste Pruvot-Fol 1954: 165]. Gastropoda: Opisthobranchia.

***Helioradsia* Thiele in Troschel & Thiele 1893e.**

Das Gebiss der Schnecken, 2(8): 385; as new genus [= *Chaetopleura* s.s. Shuttleworth 1853, teste Belle 1983: 85; = *Chaetopleura* (*Palliochiton*) Dall 1879, teste Kaas & Belle 1987: 103]. Type-species by monotypy: *Helioradsia gemma* Carpenter [*Chaetopleura gemma* "Carpenter" Dall 1879: 78, fig. 9]. Chitonidae [Chaetopleuridae, teste Belle 1983: 85; Ischnochitonidae, teste Kaas & Belle 1987: 103]. Polyplacophora.

***Hemiglyptopsis* Thiele 1931c.**

Handbuch der systematischen Weichtierkunde, 1(2): 624; as new subgenus of *Antinous* Robson 1914. Type-species by monotypy: *Antinous* (*Hemiglyptopsis*) *foullioyi* (Guillou) [*Helix foullioyi* Le Guillou 1845: 187]. Ariophantidae [Helicarionidae, teste Zilch 1959: 298]. Gastropoda: Pulmonata.

***Hemimetus* Thiele 1934.**

Handbuch der systematischen Weichtierkunde, 2(3): 915; as new subgenus of *Apolymetis* Salisbury 1929 [subgenus of *Tellina* Linnaeus 1758, teste Keen in Moore 1969: N615]. Type-species by monotypy: *Apolymetis* (*Hemimetus*) *plicata* (Valenciennes) [*Tellina plicata* Valenciennes in Lamarck 1827: 154; see also Lamarck 1798: pl. 287 fig. 3]. Tellinidae. Bivalvia.

***Himatina* Thiele 1931c.**

Handbuch der systematischen Weichtierkunde, 1(2): 453; nomen novum pro *Himatella* Bergh 1891, non Zittel 1879 [= *Coryphella* Gray 1850, teste Odhner in Franc 1968: 881]. Flabellinidae [Coryphellidae, teste Odhner in Franc 1968: 881]. Gastropoda: Opisthobranchia.

***Hochstetterina* Thiele 1934.**

Handbuch der systematischen Weichtierkunde, 2(3): 796; [listed by Thiele as "nom. nov." pro *Hochstetteria* Vélain 1877 *part.*; subgenus of *Philobrya* Carpenter 1872, teste Keen in Moore 1969: N269]. Type-species by monotypy: *Hochstetterina crenella* (Vélain) [*Hochstetteria crenella* Vélain, 1877: 131-132, pl. 5 figs. 5, 6]. Limopsidae [Philobryidae, teste Keen in Moore 1969: N270]. Bivalvia.

***Hydrococcus* Thiele 1928c.**

Zoologische Jahrbücher, 55(5-6): 375, 380; as new genus. Type-species by monotypy: *Hydrococcus graniformis* Thiele 1928, new name for *Paludina granum* Menke 1843, non Say 1822 [= *Rissoa* (*Setia*) *brazieri* Tenison-Woods 1876 = *Hydrococcus brazieri* (Tenison-Woods 1876), teste Ponder 1982: 65]. Hydrobiidae [Hydrococcidae, teste Wenz, 1939: 588]. Gastropoda: Prosobranchia.

Hymenoteuthis Thiele 1916a.

Zoologischer Anzeiger, 48(1): 4; as new genus or subgen. of *Vampyroteuthis* Chun 1903 [genus, teste Thiele 1934: 984; subjective synonym of *Vampyroteuthis*, teste Nesis 1987: 276]. Type-species by monotypy: *Cirroteuthis macrope* Berry 1910 [1911: 589]. Vampyroteuthidae. Cephalopoda.

Icoplax Thiele in Troschel & Thiele 1893e.

Das Gebiss der Schnecken, 2(8): 392; as new genus [subgenus of *Callochiton* Gray 1847, teste Thiele 1929: 9; = *Callochiton* Gray 1847, s.s., teste A. G. Smith 1960: 158, Belle 1983: 90]. Type-species by monotypy: *Icoplax punicea* Couthouy [*Chiton puniceus* (Couthouy MS) Gould 1846: 143; = *Trachydermon steinenii* Pfeiffer (sic, err. pro Pfeiffer) 1886, teste Belle 1983: 90]. Chitonidae [Callochitonidae, teste A. G. Smith 1960: 158; Ischnochitonidae, teste Kaas & Belle 1985b: 11]. Polyplacophora.

Iduliella Thiele 1931c.

Handbuch der systematischen Weichtierkunde, 1(2): 449; nomen novum pro *Dotilla* Bergh 1879, non Stimpson 1858. Iduliidae [Dotonidae, teste Odhner in Franc 1968: 877]. Gastropoda: Opisthobranchia.

Indopyrgus Thiele 1928c.

Zoologische Jahrbücher, 55(5-6): 373, 378; as new subgenus of *Pomatopyrgus* Stimpson 1865. Type-species by monotypy: *Pomatopyrgus* (*Indopyrgus*) *nevilli* Thiele 1928. Hydrobiidae. Gastropoda: Prosobranchia.

Iphitella Thiele 1925b.

Wissenschaftliche Ergebnisse der deutschen Tiefsee-Expedition . . . "Valdivia", 17(2): 93 [59]; nomen novum pro *Iphitus* Jeffreys 1883, non Rafinesque 1815. Fossaridae [Littorinidae, teste Thiele 1929: 127]. Gastropoda: Prosobranchia.

Ischnocerithium Thiele 1929.

Handbuch der systematischen Weichtierkunde, 1(1): 212; as new subgenus of *Colina* H. & A. Adams 1854. Type-species by

monotypy: *Colina* (*Ischnocerithium*) *rostrata* (Sowerby) [*Cerithium rostratum* G. B. Sowerby II 1855: 861, pl. 180, fig. 104]. Cerithiidae. Gastropoda: Prosobranchia.

Jaronia Thiele 1934.

Handbuch der systematischen Weichtierkunde, 2(3): 818; emendation pro *Jaronia* Pallary 1924 [German spelling of "I"]; as section of *Caelatura* Conrad 1853. Unionidae. Bivalvia.

Jeffreysiella Thiele 1912b.

Deutsche Südpolar-Expedition 1901-1903, 13(2): 239; as new genus [subgen. of *Rissoella*, teste Thiele 1925b: 91 [57]]. Type-species by monotypy: *Jeffreysiella notabilis* Thiele 1912. [Rissoellidae, teste Thiele 1925b: 91 [57]]. Gastropoda: Prosobranchia.

Jeffreysilla Thiele 1925b.

Wissenschaftliche Ergebnisse der deutschen Tiefsee-Expedition . . . "Valdivia", 17(2): 92 [58]; n. subgroup of *Rissoella* Gray 1847 [subgenus of *Rissoella*, teste Thiele 1929: 179]. Type-species by monotypy: *Rissoella* (*Jeffreysilla*) *zebra* Thiele 1925. Rissoellidae. Gastropoda: Prosobranchia.

Jeffreysina Thiele 1925b.

Wissenschaftliche Ergebnisse der deutschen Tiefsee-Expedition . . . "Valdivia", 17(2): 92 [58]; as new subgenus of *Rissoella* Gray 1847. Type-species by subsequent designation (Wenz 1939: 649): *Rissoella* (*Jeffreysina*) *globularis* (Jeffreys) [*Jeffreysia globularis* Jeffreys MS. Forbes & Hanley 1853: 268-269, pl. 133 fig. 5; teste Warén 1980: 24]. Rissoellidae. Gastropoda: Prosobranchia.

Jeffreysiopsis Thiele 1912b.

Deutsche Südpolar-Expedition 1901-1903, 13(2): 276; as new subgenus of *Jeffreysia* Alder 1849 [*Jeffreysiopsis* Thiele = *Rissoella* Gray 1847, s.s., teste Thiele 1925b: 91 [57]]. Type-species by monotypy: *Paludestrina dupperrei* Vélain [1877: 115, pl. 3 figs. 18, 19]. [Rissoellidae, teste Thiele 1925b: 91 [57]]. Gastropoda: Prosobranchia.

Jheringella Thiele 1934.

Handbuch der systematischen Weichtierkunde, 2(3): 841; emendation pro *Iheringella* Pilsbry 1893 [German spelling of "I"]; as genus. Mutelidae. Bivalvia.

Lepidochiton Thiele 1929.

Handbuch der systematischen Weichtierkunde, 1(1): 8; emendation

pro *Lepidochitona* Gray 1821, non *Lepidochiton* Carpenter 1857; as genus [= *Lepitochitona*, teste A. G. Smith 1960: I56]. Lepidochitonidae [Ischnochitonidae, teste A. G. Smith 1960: I56]. Polyplacophora.

***Lepidopleuroides* Thiele 1928b.**

Fauna Arctica, 5(2): 564; as new subgenus of *Ischnochiton* Gray 1847 [= *Ischnochiton* (*Stenosemus*) Middendorff 1847, teste A. G. Smith 1960: I55, Belle 1983: 69; Kaas & Belle 1990: 60]. Type-species by original designation: *Ischnochiton* (*Lepidopleuroides*) *albus* (Linnaeus) [*Chiton albus* Linnaeus 1767: 1107]; see Kaas & Belle 1980: 6, for synonyms. Ischnochitonidae. Polyplacophora.

***Leptopleura* Thiele in Troschel & Thiele 1893e.**

Das Gebiss der Schnecken, 2(8): 381; as new genus [= *Ischnochiton* Gray 1847, teste Thiele 1909d: 3; A. G. Smith 1960: I55; Belle 1983: 66; Kaas & Belle 1990: 78]. Type-species by monotypy: *Leptopleura catenulata* Sowerby [*Chiton catenulatus* G. B. Sowerby 1832: 104]; material subsequently re-identified as *Ischnochiton fraternus* Thiele 1909, by Thiele 1909i: 77. Chitonidae [Ischnochitonidae, teste A. G. Smith 1960: I55; Kaas & Belle 1990: 78]. Polyplacophora.

***Leucosteles* Thiele 1927a.**

Zoologische Jahrbücher, 53(1-3): 123, 126, 129; as new section of *Paludinella* L. Pfeiffer 1841 [introduced as a new section, but Thiele referred to *Leucosteles* Semper on pp. 126, 129; listed by Thiele 1929: 170 as "*Leucosteles* (Semper) Thiele 1927"; subgenus of *Paludinella*, teste Wenz, 1939: 633]. Type-species by original designation: *Paludinella* (*Leucosteles*) *vitrea* Thiele 1927. Assimineidae. Gastropoda: Prosobranchia.

***Limopsilla* Thiele 1923.**

Zoologischer Anzeiger, 55(11/13): 289; as new genus [= *Limopsis* Sassi 1827, teste Newell in Moore 1969: N265]. Type-species by monotypy: *Limopsis pumilio* E. Smith [E. A. Smith, 1904a: 43, pl. 3 figs. 27, 28]. Limopsinae [Limopsidae, teste Thiele 1926b: 186]. Bivalvia.

***Lionucula* Thiele 1934.**

Handbuch der systematischen Weichtierkunde, 2(3): 786; emendation pro *Lionucula* W. Quenstedt 1930; as subgenus of *Nucula* Lamarck 1799. Nuculidae. Bivalvia.

***Lissarcula* Thiele 1923.**

Zoologischer Anzeiger, 55(11/13): 290; as new genus [?= *Limopsis* Sassi, 1827, teste Newell in Moore 1969: N265]. Type-species by original designation: *Lissarcula australis* Thiele 1923. Limopsinae [Limopsidae, teste Thiele 1926b: 186]. Bivalvia.

***Lissoconchus* Thiele 1929.**

Handbuch der systematischen Weichtierkunde, 1(1): 125; as new subgenus of *Cremnoconchus* Blanford 1869. Type-species by monotypy: *Cremnoconchus (Lissoconchus) conicus* Blanford [*Cremnoconchus conicus* W. T. Blanford 1870: 10, pl. 3 fig. 3]. Littorinidae. Gastropoda: Prosobranchia.

***Lithoglyphopsis* Thiele 1928c.**

Zoologische Jahrbücher, 55(5-6): 366, 379; as new genus. Type-species by original designation: *Lithoglypha modestus* Gredler [*Lithoglyphus modestus* Gredler 1887: 17]. Hydrobiidae. Gastropoda: Prosobranchia.

***Lophopleura* Thiele 1912b.**

Deutsche Südpolar-Expedition 1901-1903, 13(2): 279; as new subgenus of *Lobiger* Krohn 1847 [genus, teste Thiele 1925b: 281 [247]]. Type-species by monotypy: *Lobiger (Lophopleura) capensis* Thiele 1912. [Philinidae, teste Thiele 1925b: 281 [247]; Oxynoidae, teste Thiele 1931c: 412]. Gastropoda: Opisthobranchia.

***Lophosepia* Thiele 1934.**

Handbuch der systematischen Weichtierkunde, 2(3): 954; emendation of *Lophosepion* Rochebrune 1884; as section of *Sepia* Linnaeus 1758. Sepiidae. Cephalopoda.

***Lophyriscus* Thiele in Troschel & Thiele 1893e.**

Das Gebiss der Schnecken, 2(8): 377; as new genus [= section of *Ischnochiton* Gray 1847, teste Thiele 1909d: 3, 7; = *Ischnochiton* s.s. teste Thiele 1929: 17; Kaas & Belle 1990: 78]. Type-species by subsequent designation (Kobelt 1894: 26): *Chiton textilis* [Gray 1828: 5, pl. 6 fig. 20]; material subsequently re-identified as *C. oniscus* Krauss 1848, by Thiele 1909d: 3, 6; Belle 1983: 66]. See Kaas & Belle (1980: 93, 131) for additional homonyms and synonyms. Chitonidae [Ischnochitonidae, teste A. G. Smith 1960: 155; Kaas & Belle 1990: 78]. Polyplacophora.

***Lophyropsis* Thiele in Troschel & Thiele 1893e.**

Das Gebiss der Schnecken, 2(8): 387; as new genus [= *Lepidopleurus* Risso 1826, teste Thiele 1909d: 4; = *Lepidopleurus (Leptochiton)* Gray 1847, teste Thiele 1929: 6; = subgenus of *Ischnochiton* Gray

1847, teste A. G. Smith 1960: I56; = *Leptochiton* Gray 1847, s.s., teste Belle 1983: 52]. Type-species by monotypy: *Lophyropsis imitatrix* [sic] E. Smith [emendation pro *Chiton (Ischnochiton) imitator* E. A. Smith 1881]; Thiele (1909d: 4, 7) subsequently re-identified the material previously called *Lophyropsis imitatrix* as *Lepidopleurus medinae* Plate 1899, resulting in a misidentified type species in the sense of ICZN 1985, Art. 70]. See Kaas & Belle (1980: 62) for homonyms of *Chiton imitator*. Chitonidae [Ischnochitonidae, teste A. G. Smith 1960: I56; Leptochitonidae, teste Kaas & Belle 1985a: 36]. Polyplacophora.

Luteacarnea Thiele 1934.

Handbuch der systematischen Weichtierkunde, 2(3): 827; nomen novum pro *Striata* Frierson 1927, non O. Boettger 1878; as subgroup of *Quadrula* Rafinesque 1820. Unionidae. Bivalvia.

Lyocyclus Thiele 1925b.

Wissenschaftliche Ergebnisse der deutschen Tiefsee-Expedition . . . "Valdivia", 17(2): 116 [82]; as new group [genus, teste Wenz 1940: 896]. Type-species by original designation: *Lyocyclus solutus* Thiele 1925. Lyocyclidae Thiele 1925 [Trichotropidae, teste Thiele 1929: 242]. Gastropoda: Prosobranchia.

"Lyonsiela" [1912b].

Deutsche Südpolar-Expedition 1901-1903, 13(5): 232; error pro *Lyonsiella* Sars 1872. [Verticordiidae, teste Thiele 1934: 944]. Bivalvia.

Macrassimineae Thiele 1927a.

Zoologische Jahrbücher, 53(1-3): 122, 126; as new section of *Assimineae* Fleming 1828 [subgenus of *Assimineae*, teste Wenz 1939: 632]. Type-species by original designation: *Assimineae francesi* (Gray) [*Turbo francesii* Gray 1828: suppl. p. 18, pl. 6 fig. 28]. Assimineidae. Gastropoda: Prosobranchia.

Macrodontopsis Thiele 1931c.

Handbuch der systematischen Weichtierkunde, 1(2): 662; as new section of *Macrodontes* Swainson 1840 [subgenus of *Odontostomus* Beck 1837, teste Zilch 1960: 509]. Type-species by monotypy: *Macrodontes simplex* Thiele 1906. Bulimulidae [Odontostomidae, teste Zilch 1960: 509]. Gastropoda: Pulmonata.

Macrogonaxis Thiele 1932a.

Archiv für Molluskenkunde, 64(1): 11; as new section of *Tayloria* (*Pseudogonaxis*) Thiele 1932 [subgenus of *Tayloria* Bourguignat

1889, teste Zilch 1960: 558]. Type-species by original designation: *enneoides* (Martens) [*Streptaxis enneoides* Martens 1878: 295, pl. 2 figs. 5, 6]. [Streptaxidae, teste Zilch 1960: 558]. Gastropoda: Pulmonata.

***Macroniscus* Thiele 1929.**

Handbuch der systematischen Weichtierkunde, 1(1): 316; as new subgenus of *Macron* H. & A. Adams 1853. Type-species by monotypy: *Macron (Macroniscus) lividus* A. Adams [*Pseudoliva livida* A. Adams 1855: 136]. Buccinidae. Gastropoda: Prosobranchia.

***Margarella* Thiele in Troschel & Thiele 1893e.**

Das Gebiss der Schnecken, 2(8): 406; nomen novum pro *Margaritella* Thiele 1891 (*q.v.*), non Meek & Hayden 1860, nec Schmidt 1880 [subgenus of *Margarites* Gray 1847, teste Thiele 1912b: 189]. See also notes concerning *Margarella/Margaritella* in Thiele 1906a: 13, 1912b: 188, and 1924a: 67. Trochidae. Gastropoda: Prosobranchia.

***Margaritella* Thiele in Troschel & Thiele 1891c.**

Das Gebiss der Schnecken, 2(7): 259; as new genus, non *Margaritella* Meek & Hayden 1860, nec Schmidt 1880 (Porifera) [*Margaritella* Thiele replaced by *Margarella* Thiele 1893, (*q.v.*)]. Type-species by subsequent designation (Thiele 1924a: 67, for replacement name *Margarella*): *Margarita expansa* Sowerby I 1838. Trochidae. Gastropoda: Prosobranchia.

***Margaritopsis* Thiele 1906a.**

Nachrichtsblatt der Deutschen Malakozologischen Gesellschaft, 38(1): 15; as new genus [section of *Margarites* Gray 1847, teste Thiele 1924a: 50, 67; subgenus of *Margarites*, teste Wenz 1938: 270]. Type-species by subsequent designation (Thiele 1924a: 50, 67): *Margarita frielei* Krause [*Margarita frielei* Krause 1885: 263; = *M. argentata gigantea* Leche 1878, teste Thiele 1924a: 50]. [Trochidae, teste Thiele 1924a: 67]. Gastropoda: Prosobranchia.

***Mecynoplax* Thiele in Troschel & Thiele 1893e.**

Das Gebiss der Schnecken, 2(8): 393; as new genus [= *Acanthochites (Notoplax)* H. Adams 1861, teste Thiele 1909d: 4, 7; Belle 1983: 144; = *Cryptoconchus (Notoplax)* H. Adams 1861, s.s., teste Thiele 1929: 14; = *Craspedochiton* Shuttleworth 1853, teste A. G. Smith 1960: 169]. Type-species by monotypy: *Mecynoplax acutirostrata* Reeve [*Chiton acutirostratus* Reeve 1847b: 25]. Thiele (1909d: 4, 40) subsequently re-identified the material previously called *Mecyno-*

plax acutirostrata as *Acanthochites (Notoplax) hilgendorfi* Thiele 1909, resulting in a misidentified type species in the sense of ICZN 1985, Art. 70]. Chitonidae [Acanthochitonidae, teste A. G. Smith 1960: 169]. Polyplacophora.

***Mericella* Thiele 1929.**

Handbuch der systematischen Weichtierkunde, 1(1): 352; as new section of *Cancellaria (Narona)* H. & A. Adams 1854 [subgenus of *Narona*, teste Wenz 1943: 1364]. Type-species by monotypy: *Cancellaria (Mericella) jucunda* Thiele [*Cancellaria (Merica) jucunda* Thiele, 1925]. Cancellariidae. Gastropoda: Prosobranchia.

***Mesaliopsis* Thiele 1929.**

Handbuch der systematischen Weichtierkunde, 1(1): 181; as new section of *Mesalia* Gray 1842 [subgenus of *Mesalia*, teste Wenz 1939: 651]. Type-species by monotypy: *Mesalia (Mesaliopsis) opalina* (Adams & Reeve) [*Turritella opalina* A. Adams & Reeve 1850: 48, pl. 12 fig. 7]. Turritellidae. Gastropoda: Prosobranchia.

***Metachaetoderma* Thiele 1913e.**

Das Tierreich, 38: ix, 12; as new genus. Type-species by monotypy: *Chaetoderma challengerii* Nierstrasz 1903 [p. 359, pl. 35 figs. 1-26]. Chaetodermatidae [Limifossoridae, teste Boss 1982: 948]. Aplacophora.

***Metactaeon* Thiele 1931c.**

Handbuch der systematischen Weichtierkunde, 1(2): 378; as new subgenus of *Actaeon* Montfort 1810 or as new genus. Type-species by monotypy: *Actaeon (Metactaeon) aequatorialis* Thiele 1925 [*Actaeon aequatorialis* Thiele 1925]. Actaeonidae. Gastropoda: Opisthobranchia.

***Metamenia* Thiele 1913d.**

Deutsche Südpolar-Expedition 1901-1903, 14(1): 52; as new genus. Type-species by monotypy: *Metamenia intermedia* Thiele 1913. Proneomeniidae [Pararhopaliidae, teste Boss 1982: 951]. Aplacophora.

***Metanachis* Thiele 1924b.**

Archiv für Molluskenkunde, 56(5): 207, 210; as new section of *Columbella* Lamarck 1799 [subgenus of *Pterygia* Röding 1798, teste Wenz 1941: 1150]. Type-species by original designation: *Columbella jaspidea* Sowerby [G. B. Sowerby II 1844: 132, pl. 39 fig. 125]. Columbellidae. Gastropoda: Prosobranchia.

***Metassiminea* Thiele 1927a.**

Zoologische Jahrbücher, 53(1-3), 122, 126; as new section of *Assiminea* Fleming 1828 [subgenus of *Assiminea*, teste Wenz 1939: 633]. Type-species by original designation: *Assiminea philippinica* O. Boettger [1887: 195]. Assimineidae. Gastropoda: Prosobranchia.

***Met euthria* Thiele 1912b.**

Deutsche Südpolar-Expedition 1901-1903, 13(2): 243; as new genus [subgenus of *Thalassoplanes* Dall 1908, teste Thiele 1929: 317]. Type-species by original designation: *Euthria (Glypteuthria) martensi* Strebel [1905: 630, pl. 21 fig. 13]. Buccinidae. Gastropoda: Prosobranchia.

***Microcardium* Thiele 1934.**

Handbuch der systematischen Weichtierkunde, 2(3): 878; as new genus [subgenus of *Nemocardium* Meek 1876, teste Keen in Moore 1969: N589]. Type-species by subsequent designation (Keen 1937: 155, with emended spelling *peramabile*): *Cardium (Fulvia) peramabilis* Dall [1881: 132]. Cardiidae. Bivalvia.

***Microdiscula* Thiele 1912b.**

Deutsche Südpolar-Expedition 1901-1903, 13(2): 199; as new genus. Type-species by monotypy: *Microdiscula vanhoeffeni* [*vanhoeffeni*] Thiele 1912. [Vitrinellidae, teste Thiele 1925d: 79; Skeneopsidae, teste Thiele 1929: 176]. Gastropoda: Prosobranchia.

***Microhappia* Thiele 1927c.**

Abhandlungen herausgegeben von der Senckenbergischen Naturforschenden Gesellschaft, 40(3): 320; as new genus [section of *Miradiscops* H. B. Baker 1925, teste Thiele 1931c: 598; subgenus of *Miradiscops*, teste Zilch 1960: 545]. Type-species by monotypy: *Microhappia brasiliensis* Thiele 1927. Systrophiidae. Gastropoda: Pulmonata.

***Micropleurotoma* Thiele 1929.**

Handbuch der systematischen Weichtierkunde, 1(1): 362; as new subgenus of *Turris* O. F. Müller 1766 [sic] [genus, teste Wenz 1943: 1412]. Type-species by monotypy: *Turris (Micropleurotoma) spirotropoides* (Thiele) [*Pleurotoma spirotropoides* Thiele 1925]. Conidae [Turridae, teste Wenz 1943: 1412]. Gastropoda: Prosobranchia.

***Mirellia* Thiele 1933c.**

Sitzungsberichte der Gesellschaft Naturforschender Freunde zu Berlin, 1933(4-7): 283; as new section of *Ptychotrema* L. Pfeiffer

1853 [subgenus of *Ptychotrema*, teste Zilch 1960: 577]. Type-species by monotypy: *Ennea prodigiosa* E. Smith [E. A. Smith 1903: 316, pl. 4 fig. 11]. Streptaxidae. Gastropoda: Pulmonata.

***Mörchiella* [*Moerchiella*] Thiele 1924a.**

Mitteilungen aus dem Zoologischen Museum in Berlin, 11(1): 71; nomen novum pro *Mörchia* A. Adams 1860 (non Albers 1850) [non *Mörchiella* G. Nevill 1884; *Mörchiella* Thiele replaced by *Mörchinella* Thiele 1931 (*q.v.*)]; also introduced as new name by Thiele 1925b: 59 [25], and cited by Thiele 1929: 175 as of that date. See also Tomlin 1936: 136. Trochidae [Adeorbidae, teste Thiele 1929: 175]. Gastropoda: Prosobranchia.

***Mörchinella* [*Moerchinella*] Thiele 1931c.**

Handbuch der systematischen Weichtierkunde, 1(2): 763; nomen novum pro *Mörchiella* Thiele 1924 (*q.v.*), non G. Nevill 1884. Adeorbidae [Tornidae, teste Wenz 1939: 645]. Gastropoda: Prosobranchia.

***Monoeciostraea* Thiele 1934.**

Handbuch der systematischen Weichtierkunde, 2(3): 814; emendation pro *Monoeciostrea* Orton 1928, as synonym of *Ostrea* Linnaeus 1758, s.s.; Stenzel (1971: N1138) listed this as a *nomen nullum* in the synonymy of *Ostrea*. Ostreidae. Bivalvia.

***Mopaliella* Thiele 1909d.**

Zoologica, 22(56/1): 16; as new genus [= *Cyanoplax* Pilsbry 1892, teste A. G. Smith 1960: I58; subgenus of *Lepidochitona* Gray 1821, teste Kaas & Belle 1980: [ix]; = *Lepidochitona* s.s., teste Belle 1983: 96-97]. Type-species by monotypy: *Chiton bipunctatus* Sowerby [G. B. Sowerby I 1832: 104]. [Callochitonidae, teste Thiele 1909i: 116; Lepidochitonidae, teste Thiele 1925d: 36; Ischnochitonidae, teste A. G. Smith 1960: I58, Belle 1983: 96]. Polyplacophora.

***Mopaliopsis* Thiele in Troschel & Thiele 1893c.**

Das Gebiss der Schnecken, 2(8): 393; as new genus [= *Cyanoplax* Pilsbry 1892, teste Thiele 1909d: 4, 7, 16; = *Lepidochitona* Gray 1821, s.s., teste Belle 1983: 96]. Type-species by monotypy: *Mopaliopsis cingillata* Reeve [*Chiton cingillatus* Reeve 1847a: pl. 23 fig. 160]; Thiele (1909d: 4, 7) subsequently re-identified the material previously called *Mopaliopsis cingillata* as *Cyanoplax hartwegii* (Carpenter 1856), resulting in a misidentified type species in the sense of ICZN 1985, Art. 70]. Chitonidae [Ischnochitonidae, teste A. G. Smith 1960: I58, Belle, 1983: 96]. Polyplacophora.

Nanivitre Thiele 1927a.

Zoologische Jahrbücher, 53(1-3): 123, 126; as new section of *Paludinella* Pfeiffer 1841 [subgenus of *Paludinella*, teste Wenz 1939: 633]. Type-species by original designation: *Paludinella helicoides* Gundlach [Gundlach in Poey 1865: 70]. Assimineidae. Gastropoda: Prosobranchia.

Nanula Thiele 1924a.

Mitteilungen aus dem Zoologischen Museum in Berlin, 11(1): 54, 69; as new genus. Type-species by monotypy: *Gibbula tasmanica* Petterd [1879: 103]. Trochidae. Gastropoda: Prosobranchia.

Naytiopsis Thiele 1929.

Handbuch der systematischen Weichtierkunde, 1(1): 324; as new subgenus of *Nassa* Lamarck 1799 [genus, teste Wenz 1943: 1232]. Type-species by monotypy: *Nassa (Naytiopsis) granum* Lamarck [*Buccinum grana* Lamarck 1822: 274]. Nassidae [Nassariidae, teste Wenz 1943: 1232]. Gastropoda: Prosobranchia.

Neactaeonina Thiele 1912b.

Deutsche Südpolar-Expedition 1901-1903, 13(2): 219; as new genus or subgen. of *Actaeonina* Orbigny 1850. Type-species by monotypy: *Actaeonina cingulata* Strebel [1908: 8, pl. 2, fig. 17a-c]. [Actaeonidae, teste Thiele 1926a: 105]. Gastropoda: Opisthobranchia.

Nesodiscus Thiele 1931c.

Handbuch der systematischen Weichtierkunde, 1(2): 571; as new genus. Type-species by monotypy: *Nesodiscus fabrefactus* (Pease) [*Helix fabrefacta* Pease 1865: 669]. Endodontidae. Gastropoda: Pulmonata.

Noetiella Thiele & Jaeckel 1931b.

Wissenschaftliche Ergebnisse der deutschen Tiefsee-Expedition . . . "Valdivia", 21: 176 (18); as new section of *Arca* [section of *Arca (Noetia)* (Gray) H. & A. Adams 1857, teste Thiele 1934: 793; synonym of *Noetia* Gray 1857, teste Newell in Moore 1969: N261]. Type-species by monotypy: *Arca (Noetiella) congoensis* Thiele & Jaeckel, 1931. Subsequently attributed by various authors to Jaeckel & Thiele, Thiele & Jaeckel or to Thiele alone (e.g., Thiele 1934: 793). Arcidae [Noetiidae, teste Newell in Moore 1969: N260]. Bivalvia.

Notochiton Thiele 1906d.

Wissenschaftliche Ergebnisse der deutschen Tiefsee-Expedition . . .

"Valdivia", 9(2): 332; as new genus [subgenus of *Nuttallochiton* Plate, 1899, teste Thiele 1929: 9; = *Nuttallochiton*, teste A. G. Smith 1960: I60; Belle, 1983: 88; Kaas & Belle: 116]. Type-species by monotypy: *Notochiton mirandus* Thiele, 1906. [Lepidochitonidae, teste Thiele, 1925c: 36; Callistoplacidae, teste A. G. Smith 1960: I60; Ischnochitonidae, teste Kaas & Belle 1987: 116]. Polyplacophora.

Notodiaphana Thiele 1917a.

Nachrichtenblatt der Deutschen Malakozologischen Gesellschaft, 49(1): 23; nomen novum pro *Diaphanella* Thiele 1912 (*q.v.*), non Clessin 1880, nec Hesse 1916. [Notodiaphanidae, teste Thiele 1931c: 383]. Gastropoda: Opisthobranchia.

Notodiscus Thiele 1931c.

Handbuch der systematischen Weichtierkunde, 1(2): 575; as new genus. Type-species by monotypy: *Notodiscus hookeri* (Reeve) [*Helix hookeri* Reeve 1854: pl. 208, no. 1474]. Endodontidae. Gastropoda: Pulmonata.

Notoficula Thiele 1917a.

Nachrichtenblatt der Deutschen Malakozologischen Gesellschaft, 49(1): 24; nomen novum pro *Ficulina* Thiele 1912, non Gray 1867 [section of *Chlanidota* Martens 1878, teste Thiele 1929: 315; subgenus of *Chlanidota*, teste Wenz 1943: 1201]. [Buccinidae, teste Thiele 1925b: 179]. Gastropoda: Prosobranchia.

Notomenia Thiele 1897b.

Zoologischer Anzeiger, 20(542): 398; as new genus. Type-species by original designation: *Notomenia clavigera* Thiele 1897. [Lepidomeniidae, teste Thiele 1913e: ix, 22; family position uncertain, teste Boss 1982: 949]. Aplacophora.

Novovaginula Thiele 1931c.

Handbuch der systematischen Weichtierkunde, 1(2): 491; as new subgenus of *Pseudoveronicella* Germain 1908. Type-species by monotypy: *Pseudoveronicella (Novovaginula) carinata* (Thiele) [*Veronicella (Vaginula) carinata* Thiele 1927]. Vaginulidae. Gastropoda: Pulmonata.

Ochrodermatina Thiele 1931c.

Handbuch der systematischen Weichtierkunde, 1(2): 552; as new section of *Ochroderma* Ancey 1885 [subgenus of *Ochroderma*, teste Zilch 1959: 350]. Type-species by monotypy: *Ochroderma (Ochrodermatina) carolinum* (Martens) [*Stenogyra carolina* Martens, 1880:

147]. Subulinidae. Gastropoda: Pulmonata.

Odostomiopsis Thiele *in* Martens *in* Martens & Thiele 1904a.

Wissenschaftliche Ergebnisse der deutschen Tiefsee-Expedition . . . "Valdivia", 7A: 68 (also, Thiele *in* Martens & Thiele 1904b: 156 [10]); as new genus [= *Toledonia* Dall 1902, teste Thiele 1931c: 382]. Type-species by indication (ICZN, 1985, Article 68c): *Odostomiopsis typica* Thiele *in* Martens *in* Martens & Thiele 1904. [Diaphanidae, teste Thiele 1931c: 382]. Gastropoda: Opisthobranchia.

Olivellopsis Thiele 1929.

Handbuch der systematischen Weichtierkunde, 1(1): 333; as new section of *Belloлива* Peile 1922 [subgenus of *Belloлива*, teste Wenz 1943: 1272]. Type-species by monotypy: *Belloлива (Olivellopsis) simplex* (Pease) [*Olivella (Callianax) simplex* Pease 1868: 281, pl. 23 fig. 24]. Olividae. Gastropoda: Prosobranchia.

Onithoplax Thiele 1909d.

Zoologica, 22(56/1): 3; as new subgenus of *Tonicia* Gray 1847 [section of *Acanthopleura (Onithochiton)* Gray 1847, teste Thiele 1909i: 117; section of *Tonicia (Lucilina)* Dall 1882, teste Thiele 1929: 22; = *Lucilina*, teste A. G. Smith 1960: 166]. Type-species by subsequent designation (Belle 1983: 133, who erroneously credited the designation to Thiele 1929): *Chiton mallardi* Deshayes 1863 [1863: 38, pl. 5 fig. 14]. [Chitonidae, teste Thiele 1909i: 117]. Polyplacophora.

Oopyramis Thiele 1930.

Die Fauna Südwest-Australiens, 5(8): 580; as new genus, or new subgenus of *Tiberia* Monterosato 1875. Type-species by monotypy: *Oopyramis buplicata* Thiele 1930. [Pyramidellidae, teste Wenz 1940: 876]. Gastropoda: Prosobranchia.

Opaliopsis Thiele 1928d.

Zeitschrift für wissenschaftliche Zoologie, 132: 92; as new subgroup of *Scala* (Klein 1753) Bruguière 1792 [= *Epitonium* Röding 1798] [section of *Scala (Cirsotrema)* Mörch 1852, teste Thiele 1929: 222; subgenus of *Cirsotrema*, teste Wenz 1940: 798]. Type-species by monotypy: *Scala elata* Thiele 1925. Scalidae [= Epitoniidae]. Gastropoda: Prosobranchia.

Oriella Thiele 1927a.

Zoologische Jahrbücher, 53(1-3): 124, 127; as new subgenus or new section of *Omphalotropis* Pfeiffer 1851 [section, teste Thiele 1929:

172]. Type-species by original designation: *Omphalotropis submaritima* Quadras & Möllendorff [1894: 33]. Erroneously spelled "*Oviella*" by Wenz 1939: 636. Assimineidae. Gastropoda: Prosobranchia.

Ovassimineae Thiele 1927a.

Zoologische Jahrbücher, 53(1-3): 122, 125; as new section of *Assimineae* Fleming 1828 [subgenus of *Assimineae*, teste Wenz 1939: 632]. Type-species by original designation: *Assimineae dohrniana* Nevill [G. Nevill 1880: 162; fig. in Yen 1939: pl. 4 fig. 37]. Assimineidae. Gastropoda: Prosobranchia.

Pachydrobiella Thiele 1928c.

Zoologische Jahrbücher, 55(5-6): 367, 379; as new genus. Type-species by monotypy: *Pachydrobia brevis* Bavay [1895: 87, pl. 5 fig. 2]. Hydrobiidae. Gastropoda: Prosobranchia.

Pagodinella Thiele 1917a.

Nachrichtsblatt der Deutschen Malakozologischen Gesellschaft, 49(1): 24; nomen novum pro *Pagodula* Hesse 1916, non Monterosato 1884 [*Pagodinella* Thiele = *Pagodina* Stabile 1864, non Beneden 1853; and = *Pagodulina* Clessin 1876, teste Thiele 1931c: 510]. [Vertiginidae, teste Thiele 1926a: 139; Orculidae, teste Zilch 1959: 156]. Gastropoda: Pulmonata.

Paracerastus Thiele 1933c.

Sitzungsberichte der Gesellschaft Naturforschender Freunde zu Berlin, 1933(4-7): 308; as new subgenus of *Cerastus* Albers 1860 [subgenus of *Mabilliella* Ancey 1886, teste Zilch 1959: 195]. Type-species by monotypy: *Ena drymaeoides* Thiele [*Ena (Rachisellus) drymaeoides* Thiele 1911]. Enidae. Gastropoda: Pulmonata.

Parachiton Thiele 1909d.

Zoologica, 22(56/1): 14; as new subgenus of *Lepidopleurus* (Leach MS) Risso 1826 [subgenus of *Leptochiton* Gray 1847, teste Belle 1983: 54]. Type-species by monotypy: *Lepidopleurus (Parachiton) acuminatus* Thiele 1909. [Lepidopleuridae, teste Thiele 1909i: 116; Leptochitonidae, teste Belle 1983: 54; Kaas & Belle 1990: 14]. Polyplacophora.

Paranoetia Thiele 1934.

Handbuch der systematischen Weichtierkunde, 2(3): 793; as new section of subgenus *Arca (Noetia)* (Gray) H. & A. Adams 1857 [= *Sheldonella* Maury 1917, teste Newell in Moore 1969: N262]. Type-species by monotypy: *Arca (Paranoetia) lateralis* Reeve [*Arca*

lateralis Reeve 1844: pl. 17 fig. 115]. Arcidae [Noetiidae, teste Newell in Moore 1969: N262]. Bivalvia.

***Parasitala* Thiele 1931c.**

Sitzungsberichte der Gesellschaft Naturforschender Freunde zu Berlin, 1930: 397, 398; as new genus. Type-species by original designation: *Parasitala osumiensis* Thiele 1931. [Ariophantidae, teste Thiele 1931c: 635; Euconulidae, teste Zilch 1959: 281]. Gastropoda: Pulmonata.

***Parateuthis* Thiele 1920b.**

Deutsche Südpolar-Expedition 1901-1903, 16(8)(4): 463; as new genus [possible senior synonym of *Alluroteuthis* N. Odhner 1923, teste Thiele 1934: 970; genus incertae sedis, teste Nesis 1987: 260]. Type-species by monotypy: *Parateuthis tunicata* Thiele 1920. [?Alluroteuthidae, teste Thiele 1934: 970]. Cephalopoda.

***Paratilia* Thiele 1924b.**

Archiv für Molluskenkunde, 56(5): 204, 210; as new section of *Pyrene* (*Mitrella*) Risso 1826 [subgenus of *Mitrella*, teste Wenz 1941: 1139]. Type-species by monotypy: *Columbella alizona* Melvill [*Columbella* (*Mitrella*) *alizonae* Melvill & Standen 1901: 402, pl. 21 fig. 5]. Columbellidae. Gastropoda: Prosobranchia.

***Parhedyle* Thiele 1931c.**

Handbuch der systematischen Weichtierkunde, 1(2): 443; as new genus. Type-species by monotypy: *Parhedyle tyrtowii* (Kowalevsky) [*Hedyle tyrtowii* Kowalevsky 1900: 200-202]. Hedylidae [Microhedylidae, teste Pruvot-Fol 1954: 167]. Gastropoda: Opisthobranchia.

***Parvoliva* Thiele 1929.**

Handbuch der systematischen Weichtierkunde, 1(1): 335; as new section of *Oliva* Bruguière 1789 [subgenus of *Oliva*, teste Wenz 1943: 1281]. Type-species by monotypy: *Oliva* (*Parvoliva*) *dubia* Schepman [*Oliva dubia* Schepman 1903: 68]. Olividae. Gastropoda: Prosobranchia.

***Paryphantopsis* Thiele 1928a.**

Zoologische Jahrbücher, 55(1-3): 125; as new section of *Flammulina* Martens 1873 [subgenus, teste Thiele 1931c: 576; genus, teste Zilch 1959: 223]. Type-species by original designation: *Flammulina* (*Paryphantopsis*) *lamelligera* Thiele 1928. Endodontidae. Gastropoda: Pulmonata.

***Patellidea* Thiele in Troschel & Thiele 1891c.**

Das Gebiss der Schnecken, 2(7): 315; as new genus [subgroup of *Patella* (*Scutellastra*) H. & A. Adams 1854, teste Thiele 1929: 40; subgenus of *Patella*, teste Wenz 1938: 215]. Type-species by monotypy: *Patella granularis* Linnaeus [1758: 782]. Patellidae. Gastropoda: Prosobranchia.

Patellona Thiele in Troschel & Thiele 1891c.

Das Gebiss der Schnecken, 2(7): 317; as new genus [subgroup of *Patella* (*Cymbula*) H. & A. Adams 1854, teste Thiele 1929: 41]. Type-species by subsequent designation (Kobelt 1894: 26): *Patella granatina* [Linnaeus 1758: 782]. Patellidae. Gastropoda: Prosobranchia.

Patellopsis Thiele in Troschel & Thiele 1891c.

Das Gebiss der Schnecken, 2(7): 324; as new genus, non *Patellopsis* Nobre 1886. Type-species: no nominal taxa included; description based on the radula of an unnamed South African species. Homonymy recognized by Thiele 1931c: 766; never renamed. Patellidae. Gastropoda: Prosobranchia.

Patinastra Thiele in Troschel & Thiele 1891c.

Das Gebiss der Schnecken, 2(7): 325; as new genus [section of *Helcion* (*Patina*) Leach 1852, teste Thiele 1929: 41; subgenus of *Helcion* Montfort 1810, teste Wenz 1938: 214]. Type-species by monotypy: *Patella pruinosa* Krauss 1848 [p. 56, pl. 3 figs. 9a, b]. Patellidae. Gastropoda: Prosobranchia.

Paucidentella Thiele 1933c.

Sitzungsberichte der Gesellschaft Naturforschender Freunde zu Berlin, 1933(4-7): 285; as new section of *Gulella* L. Pfeiffer 1856 [subgenus of *Gulella*, teste Zilch 1960: 569]. Type-species by original designation: *Gulella conica* (Martens) [*Ennea conica* Martens 1876: 264, pl. 4 figs. 6, 7]. Streptaxidae. Gastropoda: Pulmonata.

Pediculariella Thiele 1925d.

Handbuch der Zoologie, 5(1): 88; as new group [subgenus of *Pedicularia* Swainson 1840, teste Wenz 1941: 1001]. Type-species by monotypy: *californica* (Newcomb) [*Pedicularia californica* Newcomb 1864: 121]. Cypraeidae [Amphiperatidae, teste Wenz 1941: 1001; Pediculariidae, teste Vaught 1989: 33]. Gastropoda: Prosobranchia.

“*Pherusiana*” [1929].

Handbuch der systematischen Weichtierkunde, 1(1): 226; error pro *Pherusina* (Norman MS) Chaster 1898. Aclididae. Gastropoda:

Prosobranchia.

Phyllomenia Thiele 1913d.

Deutsche Südpolar-Expedition 1901-1903, 14(1): 38, 45; as new genus. Type-species by monotypy: *Phyllomenia austrina* Thiele 1913. Lepidomeniidae [Phyllomeniidae, teste Boss 1982: 950]. Aplacophora.

Pistris Thiele 1934.

Handbuch der systematischen Weichtierkunde, 2(3): 917; nomen novum pro *Pistris* Lamy 1918, non Linck 1790 (Latham 1794), nec (Lepelletier MS) Brullé 1846 [subgenus of *Tellina* Linnaeus 1758, teste Keen in Moore 1969: N619]. Tellinidae. Bivalvia.

Plagiolopsis Thiele 1934.

Handbuch der systematischen Weichtierkunde, 2(3): 834; new genus [introduced by Thiele as "nom nov." pro *Plagiola* sensu Stimpson; = *Plagiola* Rafinesque 1819, teste Haas in Moore 1969: N455; = *Ellipsaria* Rafinesque 1820, teste Johnson 1978: 248]. Type-species by monotypy: *P. securis* (Lea) [*Unio securis* Lea 1829: 437, pl. 11 fig. 17]. Unionidae. Bivalvia.

Pleurobranchella Thiele 1925b.

Wissenschaftliche Ergebnisse der deutschen Tiefsee-Expedition . . . "Valdivia", 17(2): 283 [249]; as new genus or new subgenus of *Euselenops* Pilsbry 1896 [section of *Pleurobranchaea* (*Euselenops*), teste Thiele 1931c: 419]. Type-species by monotypy: *Euselenops* (*Pleurobranchella*) *nicobarica* Thiele 1925. Pleurobranchidae. Gastropoda: Opisthobranchia.

Plicarcularia Thiele 1929.

Handbuch der systematischen Weichtierkunde, 1(1): 324; as new section of *Nassa* (*Arcularia*) Link 1807 [subgenus of *Arcularia*, teste Wenz 1943: 1232]. Type-species by monotypy: *Nassa* (*Plicarcularia*) *thersites* (Bruguière) [*Nassa thersites* Lamarck 1816: pl. 394, liste, p. 1]. Nassidae [Nassariidae, teste Wenz 1943: 1232]. Gastropoda: Prosobranchia.

Poeciloplax Thiele in Troschel & Thiele 1893e.

Das Gebiss der Schnecken, 2(8): 365; as new genus [section of *Chiton*, teste Thiele 1909d: 2; = *Chiton* (*Amaurochiton*) Thiele 1893, teste A. G. Smith 1960: I66; = *Chiton* Linnaeus 1758, s.s., teste Belle 1983: 123]. Type-species by monotypy: *Poeciloplax glauca* Gray [1828: p. 5], non Quoy & Gaimard 1835 [= *viridus* Quoy & Gaimard 1835, non Spengler 1797, = *quoyi* Deshayes 1836, = var.

limosus (Suter MS) Nierstrasz 1905; teste Kaas & Belle 1980: 54].
Chitonidae. Polyplacophora.

***Primovula* Thiele 1925d.**

Handbuch der Zoologie, 5(1): 88; as new group [genus, teste Wenz 1941: 1009, 1010]. Type-species by monotypy: *beckeri* (Sowerby) [*Amphiperas beckeri* G. B. Sowerby III 1900: 5, pl. 1 fig. 13]. Cypraeidae [Amphiperatidae, teste Wenz 1941: 1009, 1010; Ovulidae, teste Vaught 1989: 33]. Gastropoda: Prosobranchia.

***Probuccinum* Thiele 1912b.**

Deutsche Südpolar-Expedition 1901-1903, 13(2): 207, 211; as new genus or new subgenus of *Neobuccinum* E. Smith 1879 [section of *Ghypteuthria* Strebel 1905, teste Thiele 1929: 318; subgenus of *Ghypteuthria*, teste Wenz 1943: 1207]. Type-species by subsequent designation (Wenz 1943: 1207): *Ghypteuthria (Probuccinum) tenera* E. A. Smith [*Neobuccinum tenerum* E. A. Smith 1907: 2, pl. 1, figs. 2, 2a). Buccinidae. Gastropoda: Prosobranchia.

***Probythinella* Thiele 1928c.**

Zoologische Jahrbücher, 55(5-6): 370, 378; as new subgenus of *Cincinnatia* Pilsbry 1891 [later (footnote p. 370 and p. 378) as section of *Hoyia* F. C. Baker 1925]; subgenus of *Hoyia*, teste Wenz 1939: 569]. Type-species by monotypy: *Cincinnatia emarginata* (Küster) [*Paludina emarginata* "Say" Küster 1852: 50, pl. 10 figs. 3, 4]. Hydrobiidae. Gastropoda: Prosobranchia.

***Procalpurnus* Thiele 1929.**

Handbuch der systematischen Weichtierkunde, 1(1): 272; as new section of *Calpurnus* Montfort 1810 [subgenus of *Calpurnus*, teste Wenz 1941: 1010]. Type-species by monotypy: *Calpurnus (Procalpurnus) lacteus* (Lamarck) [*Ovula lactea* Lamarck 1810: 111]. Cypraeidae [Ovulidae, teste Vaught 1989: 33]. Gastropoda: Prosobranchia.

***Prochaetoderma* Thiele 1902b.**

Zeitschrift für wissenschaftliche Zoologie, 72(2-3): 275; as new genus. Type-species by monotypy: *Chaetoderma raduliferum* Kowalevsky 1901 [*Chaetoderma radulifera* Kowalevsky 1901a: 264, pl. 10 figs. 1-20]. [Chaetodermatidae, teste Thiele 1913e: ix, 10; Caudofoveata, Prochaetodermatidae, teste Boss 1982: 948]. Aplacophora.

***Prochiton* Thiele 1890a.**

Zeitschrift für wissenschaftliche Zoologie, 49(3): 428; as new genus [listed by Belle 1983: 155 as a hypothetical taxon of Plate 1901]. Type-species by monotypy: *Chiton rubicundus* O. G. Costa 1829 [pl. 1 fig. 3] [= *Chiton (Rhysoplax) corallinus* Risso 1826, teste Kaas & Belle 1980: 31, 112]; Thiele (1902b: 284) subsequently re-identified the material previously called *Chiton rubicundus* as *Callochiton doriae* (Capellini 1859) [= *Callochiton septemvalvis* (Montagu 1803) subsp. *euplaeae* (O. G. Costa 1829), teste Kaas & Belle 1980: 40], resulting in a misidentified type species in the sense of ICZN 1985, Art. 70].

***Proclava* Thiele 1929.**

Handbuch der systematischen Weichtierkunde, 1(1): 212; as new subgenus of *Cerithium* Bruguière 1789 [subgenus of *Clava* Martyn 1784, teste Wenz 1940: 761, 1943: 1501]. Type-species by monotypy: *Cerithium (Proclava) pfefferi* Dunker [*Vertagus pfefferi* Dunker 1877: 75]. Cerithiidae. Gastropoda: Prosobranchia.

***Prodoridunculus* Thiele 1912b.**

Deutsche Südpolar-Expedition 1901-1903, 13(2): 218, 222; as new genus. Type-species by monotypy: *Prodoridunculus gaussianus* Thiele 1912. [Polyceridae, teste Thiele 1931c: 427; Onchidoridae, teste Powell 1960: 165; Lamellidoridae, teste Odhner in Franc 1968: 861]. Gastropoda: Opisthobranchia.

***Profundinassa* Thiele 1929.**

Handbuch der systematischen Weichtierkunde, 1(1): 323; as new subgenus of *Nassa* Lamarck 1799 [genus, teste Wenz 1943: 1231]. Type-species by monotypy: *Nassa (Profundinassa) babylonica* Watson [*Nassa (Aciculina) babylonica* Watson 1882: 366; 1886: 185, pl. 11 fig. 8]. Nassidae [Nassariidae, teste Wenz 1943: 1231]. Gastropoda: Prosobranchia.

***Prohappia* Thiele 1927c.**

Abhandlungen herausgegeben von der Senckenbergischen Naturforschenden Gesellschaft, 40(3): 313; as new subgenus of *Happia* Bourguignat 1889. Type-species by monotypy: *Happia besckei* (Dunker) [*Helix besckei* Dunker in Pfeiffer 1847: 81]. Systrophiiidae. Gastropoda: Pulmonata.

***Prolacuna* Thiele 1913a.**

Zentralblatt für Zoologie, 2(3): 86; nomen novum pro *Sublacuna* Thiele 1912 (*q.v.*), non Pilsbry 1895, nec Cossmann 1899 [subgenus of *Frovina* Thiele 1912, teste Wenz 1941: 1028].

[Naticidae, teste Thiele 1929: 260]. Gastropoda: Prosobranchia.

Proneptunea Thiele 1912b.

Deutsche Südpolar-Expedition 1901-1903, 13(2): 246; as new genus [subgenus of *Thalassoplanes* Dall 1908, teste Thiele 1929: 317]. Type-species by monotypy: *Proneptunea amabilis* Thiele 1912. Buccinidae. Gastropoda: Prosobranchia.

Proneritula Thiele 1929.

Handbuch der systematischen Weichtierkunde, 1(1): 324; as new section of *Nassa* (*Cyclope*) Risso 1826 [subgenus of *Cyclope*, teste Wenz 1943: 1234]. Type-species by monotypy: *Nassa* (*Proneritula*) *westerlundi* (Brusina) [*Cyclope westerlundi* Brusina 1900: 89]. Nassidae [Nassariidae, teste Vaught, 1989: 49]. Gastropoda: Prosobranchia.

Proplanaxis Thiele 1929.

Handbuch der systematischen Weichtierkunde, 1(1): 203; as new subgenus of *Planaxis* Lamarck 1822. Type-species by monotypy: *Planaxis* (*Proplanaxis*) *planicostatus* Sowerby [*Planaxis planicostatus* G. B. Sowerby I 1825, Appendix p. xiii]. Planaxidae. Gastropoda: Prosobranchia.

Proreinia Thiele 1931c.

Handbuch der systematischen Weichtierkunde, 1(2): 531; as new section of *Reinia* Kobelt 1876 [subgenus of *Reinia*, teste Zilch 1959: 391]. Type-species by monotypy: *Reinia* (*Proreinia*) *eastlakeana* (Möllendorff) [*Clausilia eastlakeana* Möllendorff 1882: 187; 1883: 262, pl. 8 figs. 7a-c]. Clausiliidae. Gastropoda: Pulmonata.

Proseila Thiele 1929.

Handbuch der systematischen Weichtierkunde, 1(1): 218; as new section of *Seila* A. Adams 1861 [subgenus of *Seila*, teste Wenz 1940: 781]. Type-species by monotypy: *Seila* (*Proseila*) *capitata* Thiele [*Seila capitata* Thiele 1925]. Cerithiopsidae. Gastropoda: Prosobranchia.

Proselenites Thiele 1927c.

Abhandlungen herausgegeben von der Senckenbergischen Naturforschenden Gesellschaft, 40(3): 313; as new subgenus of *Haplotrema* Ancey 1881 [= *Geomene* Pilsbry 1927, teste Zilch 1960: 549]. Type-species by subsequent designation (Baker 1928: 124; see also Baker 1941: 132, and Pilsbry 1946: 208): *Helix concava* Say 1821 [p. 159]. Systrophiiidae [Haplotrematidae, teste Zilch 1960: 549]. Gastropoda: Pulmonata.

***Prosipho* Thiele 1912b.**

Deutsche Südpolar-Expedition 1901-1903, 13(2): 206; as new group [genus, teste Thiele 1929: 319]. Type-species by subsequent designation (Wenz 1943: 1210): *Prosipho gaussianus* Thiele 1912. Buccinidae. Gastropoda: Prosobranchia.

***Prothalotia* Thiele 1930.**

Die Fauna Südwest-Australiens, 5(8): 566; as new section of *Cantharidus* Montfort 1810 [subgenus of *Thalotia* Gray 1847, teste Wenz 1938: 305]. Type-species by original designation: *Cantharidus (Prothalotia) flindersi* (P. Fischer) [*Trochus flindersi* P. Fischer 1878: 65]. [Trochidae, teste Thiele 1931c: 735]. Gastropoda: Prosobranchia.

***Protomella* Thiele 1929.**

Handbuch der systematischen Weichtierkunde, 1(1): 182; as new section of *Protoma* Baird 1870 [subgenus of *Protoma*, teste Wenz 1939: 659]. Type-species by monotypy: *Protoma (Protomella) pulchra* Sowerby [*Protoma pulchra* G. B. Sowerby III 1905: 279]. Turritellidae. Gastropoda: Prosobranchia.

***Pruvotia* Thiele 1894b.**

Zeitschrift für wissenschaftliche Zoologie, 58(2): 272; as new genus. Type-species by monotypy: *Proneomenia sopita* Pruvot 1891 [p. 721, pl. 30 fig. 50, pl. 31 fig. 84]. [Proneomeniidae, teste Thiele 1913e: x, 52; Rhopalomeniidae, teste Boss 1982: 952]. Aplacophora.

***Pseudactaeon* Thiele 1925b.**

Wissenschaftliche Ergebnisse der deutschen Tiefsee-Expedition . . . "Valdivia", 17(2): 257 [223]; as new group [genus, teste Thiele 1931c: 378; genus *Pseudactaeon* (sic), teste Odhner in Franc 1968: 835]. Type-species by monotypy: *Actaeon albus* (Sowerby 1873) [*Tornatella albus* G. B. Sowerby II 1873: 720, pl. 59 fig. 6]. Actaeonidae. Gastropoda: Opisthobranchia.

***Pseudanachis* Thiele 1924b.**

Archiv für Molluskenkunde, 56(5): 208; as new genus [also described as new by Thiele 1925b: 172 [138]]. Type-species by monotypy: *Columbella duclosiana* Sowerby [G. B. Sowerby II 1844: 113, pl. 36 figs. 15, 16; non *Columbella duclosiana* Orbigny in Sagra 1842: 136, pl. 21 figs. 31-33]. ?Columbellidae. Gastropoda: Prosobranchia.

***Pseudassimineia* Thiele 1927a.**

Zoologische Jahrbücher, 53: 123, 127; as new genus. Type-species by original designation: *Omphalotropis waigiouensis* Sykes [1903: 67]. Assimineidae. Gastropoda: Prosobranchia.

***Pseudisidora* Thiele 1931c.**

Handbuch der systematischen Weichtierkunde, 1(2): 476; as new subgenus of *Lymnaea* Lamarck 1799 [genus, teste Zilch 1959: 93]. Type-species by monotypy: *Lymnaea (Pseudisidora) rubella* Lea [*Lymnaea rubella* Lea 1844: 12; non Clessin 1873]. Lymnaeidae. Gastropoda: Pulmonata.

***Pseudocleopatra* Thiele 1928c.**

Zoologische Jahrbücher, 55(5-6): 394, 400; as new genus. Type-species by monotypy: *Pseudocleopatra togoensis* Thiele 1928. Melaniidae [Thiaridae, teste Wenz 1939: 703]. Gastropoda: Prosobranchia.

***Pseudocyclotus* Thiele 1894a.**

Nachrichtenblatt der Deutschen Malakozologischen Gesellschaft, 26(1-2): 23. Type-species by original designation: *Cyclostoma novaehiberniae* Quoy & Gaimard [*Cyclostoma novae hiberniae* [sic] Quoy & Gaimard 1832: 182, pl. 12 figs. 15-19]. Cyclostomidae [Assimineidae, teste Thiele 1929: 173]. Gastropoda: Prosobranchia.

***Pseudogonaxis* Thiele 1932a.**

Archiv für Molluskenkunde, 64(1): 11; as new subgenus of *Tayloria* Bourguignat 1881. Type-species by original designation: *nseudweenis* [sic] (Putzeys) [*Streptaxis nseudweensis* Putzeys 1899: lv, fig. 3]. [Streptaxidae, teste Zilch 1960: 558]. Gastropoda: Pulmonata.

***Pseudostomatella* Thiele 1924a.**

Mitteilungen aus dem Zoologischen Museum in Berlin, 11(1): 59, 70; as new section of *Stomatia* Helbling 1779 [subgenus of *Stomatia*, teste Wenz 1938: 322]. Type-species by original designation: *Pseudostomatella papyracea* (Chemnitz) [*Stomatella papyracea* "Chemnitz" A. Adams 1850b: 31]. Trochidae [Stomatiidae, teste Wenz 1938: 322]. Gastropoda: Prosobranchia.

***Pseudotopoma* Thiele 1929.**

Handbuch der systematischen Weichtierkunde, 1(1): 128; as new section of *Cyclotopsis* Blanford 1864 [subgenus of *Cyclotopsis*, teste Wenz 1939: 532]. Type-species by monotypy: *Otopoma hinduorum* Blanford [1864: 464]. Pomatiasidae. Gastropoda: Prosobranchia.

***Pseudotritonia* Thiele 1912b.**

Deutsche Südpolar-Expedition 1901-1903, 13(2): 218, 224; as new

genus. Type-species by monotypy: *Pseudotritonia quadrangularis* Thiele 1912. [Notaeolidiidae, teste Thiele 1926a: 113; Charcotiidae, teste Odhner in Franc 1968: 880]. Gastropoda: Opisthobranchia.

Psychroteuthis Thiele 1920b.

Deutsche Südpolar-Expedition 1901-1903, 16(8)(4): 440; as new genus. Type-species by monotypy: *Psychroteuthis glacialis* Thiele 1920. Psychroteuthidae. Cephalopoda.

Ptychobela Thiele 1925b.

Wissenschaftliche Ergebnisse der deutschen Tiefsee-Expedition . . . "Valdivia", 17(2): 215 [181]; as new subgenus of *Bela* Gray 1847 or as new genus. [= *Brachytoma* Swainson 1840, teste Thiele 1929: 362]. Type-species by original designation: *Pleurotoma crenularis* Lamarck [*Clavatula crenularis* Lamarck 1816: pl. 440, liste p. 9]. Pleurotomidae [Conidae, teste Thiele 1929: 362; Turridae, teste Wenz 1941: 1412]. Gastropoda: Prosobranchia.

Ptychocardia Thiele 1912b.

Deutsche Südpolar-Expedition 1901-1903, 13(2): 232; as new genus. Type-species by monotypy: *Ptychocardia vanhoeffeni* [*vanhoef-feni*] Thiele 1912. [Cyamiidae, teste Thiele 1934: 857; Vesicomysidae, teste Powell 1960: 177; Cyamiidae, teste Chavan in Moore 1969: N539]. Bivalvia.

Ptychosyrinx Thiele 1925b.

Wissenschaftliche Ergebnisse der deutschen Tiefsee-Expedition . . . "Valdivia", 17(2): 210 [176]; as new group [synonym of *Subulata* Martens 1901, teste Wenz 1943: 1402]. Type-species by monotypy: *Drillia bisinuata* (Martens) [*Pleurotoma (Subulata) bisinuata* Martens 1901: 17]. Pleurotomidae [Conidae, teste Thiele 1929: 359; Turridae, teste Wenz 1943: 1402]. Gastropoda: Prosobranchia.

"*Punigapia*" [1934].

Handbuch der systematischen Weichtierkunde, 2(3): 911; error pro *Punipagia* Iredale 1930; as genus. Semelidae. Bivalvia.

Pustulosa Thiele 1934.

Handbuch der systematischen Weichtierkunde, 2(3): 827; nomen novum pro *Bullata* Frierson 1927, non Jousseume 1875; as subgroup of *Quadrula* Rafinesque 1820 [synonym of *Quadrula (Amphinaias)* Crosse & Fischer 1894, teste Haas in Moore 1969: N437]. Unionidae. Bivalvia.

Pyrrunculus "Thiele."

Indicated by Thiele (1925b: 381 [347]) as being new, but was introduced by Pilsbry (1895: 229) as new name for *Sao* H. & A. Adams 1854, non Billberg 1820. Retusidae. Gastropoda: Opisthobranchia.

Radsiella Thiele in Troschel & Thiele 1893e.

Das Gebiss der Schnecken, 2(8): 368; as new genus, non *Radsiella* Pilsbry in Tryon & Pilsbry 1892 [*Radsiella* Thiele = *Ischnochiton* Gray 1847, teste Thiele 1909d: 2, 6; = *Ischnochiton* (*Haploplax*) Pilsbry 1894, teste A. G. Smith 1960: I56]. Type-species by subsequent designation (Kobelt 1894: 26): *Chiton punctatissimus* [sic] [*Chiton punctulatissimus* G. B. Sowerby I 1832: 58 [= *Chiton pusio* Sowerby 1832, teste Belle 1983: 66]]. Chitonidae [Ischnochitonidae, teste A. G. Smith: I56; Kaas & Belle 1990: 78]. Polyplacophora.

Rhachidina Thiele 1921b.

Archiv für Molluskenkunde, 53(3): 150; as new group [genus *Rhachidina* Thiele 1911 (sic), teste Zilch 1959: 194]. Type-species by original designation: *R. tumefacta* (Reeve) [*Bulimus tumefacta* Reeve 1848: *Bulimus*, no. 374]. Date given as "1911" by Thiele 1931c: 524. [Enidae, teste Thiele 1926a: 139]. Gastropoda: Pulmonata.

Rhinocochlis Thiele 1931c.

Handbuch der systematischen Weichtierkunde, 1(2): 633; as new genus. Type-species by monotypy: *Rhinocochlis nasuta* (Metcalf) [*Helix nasuta* Metcalfe 1851: 70]. Ariophantidae. Gastropoda: Pulmonata.

Rhodoplax Thiele in Troschel & Thiele 1893e.

Das Gebiss der Schnecken, 2(8): 384; as new genus [section of *Ischnochiton* (*Stenoplax*) (Carpenter MS) Dall 1878, teste Thiele 1909i: 112, 116; = *Ischnochiton* Gray 1847, teste A. G. Smith 1960: I55; Belle 1983: 66; Kaas & Belle 1990: 78]. Type-species by subsequent designation (Kobelt 1894: 26): *Chiton squamulosus* [C. B. Adams 1845: 8; = *Chiton striolatus* Gray 1828, teste Thiele 1909d: 3, Belle 1983: 66]. Chitonidae [Ischnochitonidae, teste Thiele 1909i: 116; Kaas & Belle 1990: 78]. Polyplacophora.

Rhombosepia Thiele 1934.

Handbuch der systematischen Weichtierkunde, 2(3): 954; emendation pro *Rhombosepion* Rochebrune 1884; as section of *Sepia* Linnaeus 1758. Sepiidae. Cephalopoda.

Rhopalopleura Thiele in Troschel & Thiele 1893e.

Das Gebiss der Schnecken, 2(8): 373; as new genus [= *Acanthopleura* (*Mesotomura*) Pilsbry 1893, teste Thiele 1909d: 3, 6; = *Acanthopleura* Guilding 1830, teste A. G. Smith 1960: 167, Belle 1983: 127]. Type-species by monotypy: *Rhopalopleura aculeata* Linnaeus [*Chiton aculeatus* Linnaeus 1758: 667; = *Chiton echinatus* Barnes 1824, teste Belle 1983: 127; for synonyms of *echinatus*, see Kaas & Belle 1980: 41]. Chitonidae. Polyplacophora.

Rhyssoplax Thiele in Troschel & Thiele 1893.

Das Gebiss der Schnecken, 2(8): 368; as new genus. Type-species by designation under the plenary powers (ICZN 1971, Opinion 951): *Chiton affinis* Issel 1869 [:234] [= *Chiton janeirensis* sensu Thiele, non Gray 1828]. *Calloplax* Thiele 1909 (*q.v.*) was established on the real *Chiton janeirensis* Gray 1828. Chitonidae. Polyplacophora.

Roseniella Thiele 1931c.

Handbuch der systematischen Weichtierkunde, 1(2): 536; nomen novum pro *Thalestris* Lindholm 1913, non Claus 1863, nec Gistel 1868, = *Rosenia* P. Hesse 1916 non Waagen & Wentzel 1886, nec Schepman 1914, nec Kieffer 1921, nec Schawerda 1922 [subgenus of *Acrotoma* O. Boettger 1881, teste Zilch 1960: 441]. Clausiliidae. Gastropoda: Pulmonata.

Rostellariella Thiele 1929.

Handbuch der systematischen Weichtierkunde, 1(1): 253; as new section of *Rostellaria* Lamarck 1799 [subgenus of *Tibia* Röding 1798, teste Wenz 1940: 934]. Type-species by monotypy: *Rostellaria* (*Rostellariella*) *delicatula* Nevill [*Rostellaria delicatula* G. Nevill 1881b: 262]. Strombidae. Gastropoda: Prosobranchia.

Rupacilla Thiele 1927a.

Zoologische Jahrbücher, 53(1-3): 123, 126; as new section of *Paludinella* Pfeiffer 1841 [subgenus of *Paludinella*, teste Wenz 1939: 633]. Type-species by original designation: "*Omphalotropis*" *filocincta* Quadras & Möllendorff [*Omphalotropis filocincta* Quadras & Möllendorff 1896: 14]. Assimineidae. Gastropoda: Prosobranchia.

Sandalomenia Thiele 1913d.

Deutsche Südpolar-Expedition 1901-1903, 14(6)(1): 41, 38; as new genus. Type-species by subsequent designation (Salvini-Plawen 1978: 48): *Sandalomenia papilligera* Thiele 1913. Lepidomeniidae [Sandalomeniidae, teste Boss 1982: 949]. Aplacophora.

***Scansicohlea* Thiele 1931c.**

Handbuch der systematischen Weichtierkunde, 1(2): 656; emendation pro *Scansicohlea* Pilsbry 1931; as subgenus of *Bulimulus* Leach 1815. Bulimulidae. Gastropoda: Pulmonata.

***Sculptassiminea* Thiele 1927a.**

Zoologische Jahrbücher, 53(1-3): 126; as new section of *Assiminea* (Leach) Fleming 1828 [subgenus of *Assiminea*, teste Wenz 1939: 632]. Type-species by original designation: *Assiminea microsculpta* Nevill [G. Nevill 1880: 165, 1881b: 158, pl. 7 fig. 5]. Assimineidae. Gastropoda: Prosobranchia.

***Segmentella* Thiele 1925b.**

Wissenschaftliche Ergebnisse der deutschen Tiefsee-Expedition . . . "Valdivia", 17(2): 110 [76]; as new subgenus of *Vermetus* Daudin 1800. Type-species by subsequent designation (Wenz 1939: 676): *Stephopoma (Segmentella) agulhasensis* (Thiele) [*Vermetus (Segmentella) agulhasensis* Thiele 1925]. Vermetidae ["should probably be classed as annelids," teste Keen, 1961: 184]. Gastropoda: Prosobranchia.

***Semiretusa* Thiele 1925b.**

Wissenschaftliche Ergebnisse der deutschen Tiefsee-Expedition . . . "Valdivia", 17(2): 268 [234]; as new group [subgenus of *Retusa* T. Brown 1827, teste Thiele 1931c: 390]. Type-species by subsequent designation (Zilch 1959: 46): *Retusa (Semiretusa) borneensis* (A. Adams) [*Bulla (Utriculus) borneensis* A. Adams 1850a: 572, pl. 120 fig. 23]. Retusidae. Gastropoda: Opisthobranchia.

***Silicula* "Jeffreys" Thiele 1934.**

Handbuch der systematischen Weichtierkunde, 2(3): 790; as genus; see comments above on *Beanella*. See Introduction, p. 5. Ledidae. Bivalvia.

***Sinomytilus* Thiele 1934.**

Handbuch der systematischen Weichtierkunde, 2(3): 801; as new section of *Mytilus (Chloromya)* Mörch 1853. Type-species by monotypy: *Mytilus (Sinomytilus) crosseanus* (Morlet) [*Dreissena crosseana* L. Morlet 1884: 402, pl. 13 figs. 5-5c]. Mytilidae [Dreissenidae, teste Brandt 1974: 307]. Bivalvia.

***Sitalina* Thiele 1931c.**

Handbuch der systematischen Weichtierkunde, 1(2): 635; as new genus. Type-species by monotypy: *Sitalina circumcincta* (Reinhardt) [*Conulus circumcinctus* Reinhardt 1883: 85]. Ariophantidae [Euconu-

lidae, teste Zilch 1959: 281]. Gastropoda: Pulmonata.

Sitalinopsis Thiele 1931c.

Handbuch der systematischen Weichtierkunde, 1(2): 612; as new subgenus of *Kaliella* Blanford 1863 [genus, teste Zilch 1959: 296]. Type-species by monotypy: *Kaliella (Sitalinopsis) conulus* (Blanford) [*Nanina (Kaliella?) conula* W.T. Blanford 1865: 73]. Ariophantidae [Helicarionidae, teste Zilch 1959: 296]. Gastropoda: Pulmonata.

"*Slerochiton*" [1909i].

Zoologica, 22(56/2): 95; error pro *Sclerochiton* (Carpenter MS) Dall 1882, non Kraatz 1859. [Chitonidae, teste A. G. Smith 1960: 166]. Polyplacophora.

Spathidosepia Thiele 1934.

Handbuch der systematischen Weichtierkunde, 2(3): 954; emendation pro *Spathidosepion* Rochebrune 1884; as subgroup of *Sepia* Linnaeus 1758. Sepiidae. Cephalopoda.

Sphaerocylichna Thiele 1925b.

Wissenschaftliche Ergebnisse der deutschen Tiefsee-Expedition . . . "Valdivia", 17(2): 276 [242]; as new subgroup of *Cylichna* Lovén 1846 [section of *Cylichna* s.s., teste Thiele 1931c: 391]. Type-species by subsequent designation (Zilch 1959: 25): *Cylichna (Sphaerocylichna) atyoides* Thiele [*Cylichna atyoides* Thiele 1925]. Scaphandridae. Gastropoda: Opisthobranchia.

Spiraxilla Thiele 1931c.

Handbuch der systematischen Weichtierkunde, 1(2): 773; nomen novum pro "*Spiraxis* Pilsbry 1903" [as listed by Thiele 1931c: 675], non *Spiraxis* C. B. Adams 1850; this was found by Thiele (1935: 1154) to have been an unnecessary replacement: "*Spiraxis*" was an error pro *Gyraxis* Pilsbry 1903. See also Tomlin 1936: 136. Urocoptidae. Gastropoda: Pulmonata.

Stereoplax Thiele in Troschel & Thiele 1893e.

Das Gebiss der Schnecken, 2(8): 383; as new genus [= *Ischnochiton* Gray 1847, teste A. G. Smith 1960: 155; = *Ischnochiton (Ischnoplax)* (Carpenter MS) Dall 1879, teste Belle 1983: 71]. Type-species by monotypy: *Stereoplax multicosiata* [sic] C. B. Adams [*Chiton multicosiatus* C. B. Adams 1845: 8 = *Chiton pectinatus* G. B. Sowerby I 1840, teste Belle 1983: 71]. Chitonidae [Ischnochitonidae, teste A. G. Smith 1960: 155]. Polyplacophora.

Strioconus Thiele 1929.

Handbuch der systematischen Weichtierkunde, 1(1): 374; as new section of *Conus* Linnaeus 1758 [= *Dendroconus* Swainson 1840, teste Thiele 1931c: 742]. Type-species by monotypy: *Conus (Strioconus) striatus* Linnaeus [*Conus striatus* Linnaeus 1758: 716]. Conidae. Gastropoda: Prosobranchia.

***Striokaliella* Thiele 1931c.**

Handbuch der systematischen Weichtierkunde, 1(2): 613; as new section of *Kaliella* Blanford 1863 [subgenus of *Kaliella*, teste Zilch 1959: 296]. Type-species by original designation: "*Sitala*" *crenicincta* Godwin-Austen [*Sitala crenicincta* Godwin-Austin 1883: 75, pl. 13 fig. 2]. Ariophantidae. Gastropoda: Pulmonata.

***Striosubulina* Thiele 1933c.**

Sitzungsberichte der Gesellschaft Naturforschender Freunde zu Berlin, 1933(4-7): 301; as new section of *Homorus* (*Neoglossula*) Pilsbry 1909 [subgenus of *Homorus*, teste Zilch 1959: 343]. Type-species by monotypy: *striatella* Rang [*Helix striatella* Rang 1831: 38, pl. 3 fig. 7], non Anthony 1840]. Subulinidae. Gastropoda: Pulmonata.

***Striotellina* Thiele 1934.**

Handbuch der systematischen Weichtierkunde, 2(3): 917; as new section of *Quadrans* Bertin 1878 [objective junior synonym of *Serratina* Pallary 1922, teste Keen in Moore 1969: N620]. Type-species by monotypy: *Quadrans (Striotellina) serratus* (Renieri) [*Tellina serrata* Brocchi 1814: 510]. Tellinidae. Bivalvia.

***Stylopyramis* Thiele 1929.**

Handbuch der systematischen Weichtierkunde, 1(1): 236; as new genus. Type-species by monotypy: *Stylopyramis cerithioides* Thiele 1929. Pyramidellidae. Gastropoda: Prosobranchia.

***Sublacuna* Thiele 1912b.**

Deutsche Südpolar-Expedition 1901-1903, 13(2): 195; as new genus [non *Sublacuna* Pilsbry 1895; *Sublacuna* Thiele replaced by *Prolacuna* Thiele 1913, (q.v.)]. Type-species by monotypy: *Sublacuna indecora* Thiele 1912. [Naticidae, teste Thiele 1929: 260]. Gastropoda: Prosobranchia.

***Subninella* Thiele 1929.**

Handbuch der systematischen Weichtierkunde, 1(1): 68; as new section of *Turbo* Linnaeus 1758 [subgenus of *Turbo*, teste Wenz 1938: 351]. Type-species by monotypy: *Turbo (Subninella) undulatus* Martyn [*Turbo undulatus* Gmelin 1791: 3597]. Turbinidae. Gastro-

poda: Prosobranchia.

Supplanaxis Thiele 1929.

Handbuch der systematischen Weichtierkunde, 1(1): 203; as new subgenus and section of *Planaxis* Lamarck 1822. Type-species by monotypy: *Planaxis (Supplanaxis) nucleus* (Lamarck) [*Buccinum nucleus* Bruguière 1789: 254]. Planaxidae. Gastropoda: Prosobranchia.

Suterilla Thiele 1927a.

Zoologische Jahrbücher, 53(1-3): 124, 127; as new section of *Omphalotropis* Pfeiffer 1851 [subgenus of *Omphalotropis*, teste Wenz 1939: 636]. Type-species by monotypy: "*Cirsonella*" *neozelanica* Murdoch [*Cirsonella neozelanica* Murdoch 1899: 320, pl. 16 figs. 2-6]. Assimineidae. Gastropoda: Prosobranchia.

Sypharochiton Thiele in Troschel & Thiele 1893e.

Das Gebiss der Schnecken, 2(9): 365; as new genus [section of *Chiton*, teste Thiele 1909d: 2; subgenus of *Chiton*, teste A. G. Smith 1960: I66; = *Chiton* Linnaeus 1758, s.s., teste Belle 1983: 123]. Type-species by monotypy: *Sypharochiton pelliserpentis* [sic] Quoy & Gaimard [*Chiton pelliserpentis* Quoy & Gaimard 1835: 381, pl. 74 figs. 17-22]. For synonyms of *pelliserpentis*, see Kaas & Belle 1980: 97. Chitonidae. Polyplacophora.

Tellinangulus Thiele 1934.

Handbuch der systematischen Weichtierkunde, 2(3): 919; as new subgenus of *Angulus* Megerle von Mühlfeld 1811 [subgenus of *Tellina* Linnaeus 1758, teste Keen in Moore 1969: N620]. Type-species by monotypy: *Angulus (Tellinangulus) aethiopicus* (Jäckel & Thiele [sic]) [*Tellina (Tellinella) aethiopica* Thiele & Jaekel 1931]. Tellinidae. Bivalvia.

Thaumastochiton Thiele 1909d.

Zoologica, 22(56/1): 34; as new subgenus of *Craspedochiton* Shuttleworth 1853 [= *Craspedochiton*, teste A. G. Smith 1960: I69; = *Notoplax (Spongiochiton)*, teste Belle 1983: 145]. Type-species by monotypy: *Craspedochiton (Thaumastochiton) möbiusi* [moebiusi] Thiele 1909 [= *Onithochiton isipingoensis* Sykes 1901, teste Kaas & Belle 1980: 86]. [Cryptoplacidae, teste Thiele, 1909i: 116; Acanthochitonidae, teste A. G. Smith 1960: I69]. Polyplacophora.

"*Toniciella*" [1893e].

Das Gebiss der Schnecken, 2(8): 389; error pro *Tonicella* Carpenter 1873. Chitonidae [Ischnochitonidae, teste A. G. Smith 1960: I58].

Polyplacophora.

Tonicina Thiele 1906e.

Expédition Antactique Française . . . Sciences naturelles: documents scientifiques, p. [i]; as new genus [subgenus of *Nuttalina* (Carpenter MS) Dall 1871, teste Belle 1983: 101]. Type-species by monotypy: *Chiton zschau* Pfeffer 1886 [Pfeffer in Martens & Pfeffer 1886: 105, pl. 3 fig. 2]. Also described as new by Thiele 1906f: 549. [Ischnochitonidae, teste Thiele 1908c: 20]. Polyplacophora.

Toniciopsis Thiele in Troschel & Thiele 1893e.

Das Gebiss der Schnecken, 2(8): 371; as new genus [= *Tonicia* (*Lucilina*) Dall 1882; teste Thiele 1909d: 3, 6]. Type-species by subsequent designation (Kobelt 1894: 26): *Chiton pictus* Reeve 1847 [1847a: pl. 15 fig. 29], non Blainville 1825, nec Bean in Thorpe 1844, [= *Chiton lamellosus* Quoy & Gaimard 1835, teste Belle 1983: 132]. Chitonidae. Polyplacophora.

Triboplax Thiele in Troschel & Thiele 1893e.

Das Gebiss der Schnecken, 2(8): 366; as new genus [section of *Chiton*, teste Thiele 1909d: 2; = *Sypharochiton* Thiele 1893, teste Thiele 1929: 20; = *Chiton* Linnaeus 1758, s.s., teste Belle 1983: 123]. Type-species by monotypy: *Triboplax scabricula* Sowerby [*Chiton scabriculus* G.B. Sowerby I 1832]; Thiele (1909d: 2) subsequently re-identified the material previously called *Triboplax scabricula* as *Chiton pelliserpentis* Quoy & Gaimard 1835, resulting in a misidentified type species in the sense of ICZN 1985, Art. 70]. Chitonidae. Polyplacophora.

Trochaclis Thiele 1912b.

Deutsche Südpolar-Expedition 1901-1903, 13(2): 192; as new genus. Type-species by monotypy: *Trochaclis antarctica* Thiele 1912. ?Aclididae, teste Thiele 1925d: 85; ?Trochaclididae, teste Thiele 1929: 179]. Gastropoda: Prosobranchia.

Turbacmella Thiele 1927a.

Zoologische Jahrbücher, 53(1-3): 123, 126; as new genus. Type-species by original designation: "*Adelomorpha*" *dohertyi* Fulton [*Adelomorpha dohertyi* Fulton 1899: 219, pl. 11 fig. 19]. Assimineidae. Gastropoda: Prosobranchia.

Typhlosyrinx Thiele 1925b.

Wissenschaftliche Ergebnisse der deutschen Tiefsee-Expedition . . . "Valdivia", 17(2): 218 [184]; as new subgenus of *Pleurotomella*

Verrill 1873 [genus, teste Thiele 1929: 365]. Type-species by monotypy: *Pleurotomella (Typhlosyrinx) vepallida* Martens [*Pleurotoma (Leucosyrinx) vepallida* Martens 1903: 204, 1904: pl. 2 fig. 6]. Pleurotomidae [Conidae, teste Thiele 1929: 365; Turridae, teste Wenz 1943: 1425]. Gastropoda: Prosobranchia.

Umbotrochus (Monterosato MS) Thiele 1924a.

Mitteilungen aus dem Zoologischen Museum in Berlin, 11(1): 58, 69; as genus, based on "Umbotrochus Monterosato in coll." [non *Umbotrochus* Perner 1904; *Umbotrochus* Thiele replaced by *Callumbonella* Thiele 1924 (*q.v.*)]. Type-species by monotypy: *Gibbula gorgonarum* P. Fischer [1883: 393]. Trochidae. Gastropoda: Prosobranchia.

Utriculastra Thiele 1925b.

Wissenschaftliche Ergebnisse der deutschen Tiefsee-Expedition . . . "Valdivia", 17(2): 269 [235]; as new subgenus of *Retusa* T. Brown 1827 [synonym of *Acteocina* Gray 1847, teste Mikkelsen & Mikkelsen 1984: 168]. Type-species by original designation: *Retusa canaliculata* (Say) [*Volvaria canaliculata* Say 1826: 211]. Retusidae [not a member of Retusidae, teste Mikkelsen & Mikkelsen 1984: 164-165]. Gastropoda: Opisthobranchia.

Venustaconcha Thiele 1934.

Handbuch der systematischen Weichtierkunde, 2(3): 837; nomen novum pro *Venusta* Frierson 1927, non O. Boettger 1877, nec Barrande 1881; as subgroup of *Lampsilis* Rafinesque 1820 [subgenus of *Lampsilis*, teste Haas in Moore 1969: N450]. Unionidae. Bivalvia.

Walkerilla Thiele 1928c.

Zoologische Jahrbücher, 55(5-6): 372, 379; as new section of *Birgella (Somatogyrus)* Gill 1863 [subgenus of *Somatogyrus*, teste Wenz 1939: 576]. Type-species by monotypy: *Somatogyrus coosaensis* Walker [*Somatogyrus coosaensis* Walker 1915: 40]. Hydrobiidae. Gastropoda: Prosobranchia.

Watsonella Thiele 1912b.

Deutsche Südpolar-Expedition 1901-1903, 13(2): 237; as new group [non *Watsonella* W. Grabau 1900; *Watsonella* Thiele replaced by *Boogina* Thiele 1913, (*q.v.*)]. Type-species by monotypy: *Rissoa (Setia) sinapi* Watson [1886: 610, pl. 46 fig. 13]. [Rissoidae, teste Thiele 1929: 167; Cingulopsidae, teste Ponder 1985: 100]. Gastropoda: Prosobranchia.

"*Zeacumanthus*" [1929].

Handbuch der systematischen Weichtierkunde, 1(1): 208; error pro *Zeacumantus* Finlay 1927. Potamididae. Gastropoda: Prosobranchia.

Zebrinops Thiele 1931c.

Handbuch der systematischen Weichtierkunde, 1(2): 525; as new genus. Type-species by monotypy: *Zebrinops revoili* (Bourguignat) [*Limicolaria revoili* Bourguignat in Revoil 1882: 42, pl. 2 figs. 24, 25 (26)]. Enidae. Gastropoda: Pulmonata.

Zemiropsis Thiele 1929.

Handbuch der systematischen Weichtierkunde, 1(1): 332; as new genus [= *Babylonia* Schlüter 1838, teste Barnard 1959: 60, 147]. Type-species by monotypy: *Zemiropsis papillaris* (Sowerby) [*Eburna papillaris* G. B. Sowerby I 1825: Appendix, p. xxii]. ? Olividae. Gastropoda: Prosobranchia.

LITERATURE CITED

(Authorities for type-species, subsequent designations and placement)

- Adams, A. 1850a. Monograph of the family Bullidae. [In:] Sowerby, George Brettingham, Junior [II]. Thesaurus Conchyliorum or figures and descriptions of Recent shells. Volume II. Part XI. Containing monographs of the genera *Navicella* and *Bulla*, with a supplementary plate of *Cyclostoma*. London, Sowerby, pp. 553-608, pls. 119-125.
- 1850b. An arrangement of Stomatellidae, including the characters of a new genus, and of several new species. Proceedings of the Zoological Society of London, 1850: 19-40.
- 1853. Descriptions of new shells, from the Cumingian Collection; with a note on the genus *Nematura*. Proceedings of the Zoological Society of London, CCXXXIII, Part XIX, 1851: 224-226.
- 1855. Descriptions of thirty-nine new species of shells, from the collection of Hugh Cuming, Esq. Proceedings of the Zoological Society of London, Part XXII, 1854: 130-138, pl. 28.
- Adams, A. & L. Reeve. 1850. [In:] Adams, A. (ed.). The Zoology of the Voyage of H.M.S. Samarang; under the command of Captain Sir Edward Belcher, C. B., F.R.A.S., F.G.S., during the years 1843-1846. Mollusca. Part III, pp. 45-87, pls. 18-24.
- Adams, C. B. 1845. Specierum novarum conchyliorum, in Jamaica repertorum, synopsis. Pars 1. Proceedings of the Boston Society of Natural History, 2: 1-10.
- Baker, H. B. 1928. Thiele's Brazilian land snails. *The Nautilus*, 41: 124-129.
- 1941. Some Haplotrematidae. *The Nautilus*, 54: 130-136, text-figs. 1-12.
- Barnard, K. H. 1959. Contributions to the knowledge of South African marine Mollusca. Part II. Gastropoda: Prosobranchiata: Rachiglossa. *Annals of the South African Museum*, 45(1): 1-237, 51 figs.
- Bavay, A. 1895. Coquilles nouvelles, provenant des récoltes de M. L. Levay, dans les rapides du Haut-Mékong, pendant la campagne du Massie, 1893-1894-1895. *Journal de Conchyliologie*, 43: 82-94, pls. 5, 6.
- Belle, R. A. van. 1983. The systematic classification of the chitons (Mollusca: Polyplacophora). *Informations de la Société Belge de Malacologie*, (11)1-2: 1-178, 13 pls.
- Bergh, L. S. R. 1891. Die cladohepatischen Nudibranchien. *Zoologische Jahrbücher, Abteilung für Systematik*, 1890, 5: 1-75.
- Berry, S. S. 1911. Preliminary notices of some new Pacific cephalopods. *Proceedings of the United States National Museum*, 40(1838): 589-592.
- Bieler, R. & K. J. Boss. 1989. Johannes Thiele and his contributions to Zoology. Part 1. Biography and bibliography. *Nemouria*, 34: 1-30.

- Blainville, H. M. D. de. 1832. Disposition méthodique des espèces récentes et fossiles des genres pourpre, ricinule, licorne et concholépas de M. Lamarck, et description des espèces nouvelles ou peu connues, faisant partie de la collection du Muséum d'Histoire Naturelle de Paris. *Nouvelles Annales du Muséum d'Histoire Naturelle*, Paris, 1(2): 189-263, pls. 9-12.
- Blanford, W. T. 1864. On the classification of the Cyclostomacea of eastern Asia. *Annals and Magazine of Natural History*, (3)13: 441-465.
- 1865. Contributions to Indian Malacology. Descriptions of some land-shells from Arakan, Pegu, and Ava, with notes on distribution of described species. *Journal of the Asiatic Society of Bengal*, 34(2): 66-105.
- 1870. Contributions to Indian Malacology. No. XI. Descriptions of new species of *Paludomus*, *Cremnoconchus*, *Cyclostoma*, and of Helicidae from various parts of India. *Journal of the Asiatic Society of Bengal*, 39(2): 9-25, pl. 3.
- Boettger, O. 1887. Aufzählung der zur Gattung *Assiminea* Fleming gehörigen Arten. *Jahrbuch der Deutschen Malakozoologischen Gesellschaft*, 14: 147-234, pl. 6, figs. 6-11.
- Boss, K. J. 1971. Critical estimate of the number of Recent Mollusca. Occasional Papers on Mollusks, Department of Mollusks, Museum of Comparative Zoology, Harvard University, Cambridge, Massachusetts, 3(40): 81-135.
- 1982. Mollusca [and] Classification of Mollusca. [In:] Parker, S. P. *Synopsis and Classification of Living Organisms*. McGraw-Hill, New York, 1: 945-1166; 2: 1092-1096.
- 1989. Preface. Occasional Papers on Mollusks, Department of Mollusks, Museum of Comparative Zoology, Harvard University, Cambridge, Massachusetts, 4: xi-xvi.
- Boss, K. J., J. Rosewater & F. A. Ruhoff. 1968. The zoological taxa of William Healey Dall. *United States National Museum, Bulletin* 287: 427 pp.
- Boss, K. J. & L. Urbanski. (in press). Oblomovism revisited. *Journal of Molluscan Behaviour*.
- Bourguignat, J. R. 1882. Mollusques terrestres et fluviatiles. [In:] G. Révoil. *Faune et Flore des Pays çomalis (Afrique orientale)*. Challamel, Ainé, Paris, 108 pp., 4 pls.
- Brandt, R. A. M. 1974. The non-marine aquatic Mollusca of Thailand. *Archiv für Molluskenkunde*, 105: 1-423, 30 pls.
- Brocchi, G. B. 1814. *Conchiologia fossile Subapennina con osservazioni geologiche sugli Apennini e sul suolo adiacente*. Volume 1: 1-240, Volume 2: 241-712, pls. 1-16; Reale, Milano.
- Broderip, W. J. & G. B. Sowerby I. 1829. Observations on new or interesting Mollusca contained, for the most part, in the Museum of the Zoological Society. *The Zoological Journal*, 4: 359-379, pls. 9.
- Bruguière, J.-G. 1789. *Encyclopédie Méthodique. Histoire Naturelle des Vers*,

1(1): 1-344; Panckoucke, Paris.

- 1792. *Encyclopédie Méthodique. Histoire Naturelle des Vers*, 1(2): 345-757; Panckoucke, Paris.
- Brusina, S. 1900. Zur Molluskenfauna des Mittelmeeres. *Nachrichtenblatt der Deutschen Malakozoologischen Gesellschaft*, 32: 86-89.
- Carpenter, P. P. 1856. Descriptions of (supposed) new species and varieties of shells, from the Californian and West Mexican coasts, principally in the collection of Hugh Cuming, Esq. *Proceedings of the Zoological Society of London*, Part 23, 1855: 228-235.
- Chavan, A. 1969. [In:] Moore, R. C. (ed.). *Treatise on Invertebrate Paleontology. The Geological Society of America, Inc. and the University of Kansas, Part N, Mollusca 6, Bivalvia, Volume 2 (of 3): N537-N539.*
- Cossmann, A. E. M. 1921. *Essais de Paléoconchologie comparée. Paris [privately published]. Douzième livraison: 348 pp., 6 pls. + leaflets A-D.*
- Costa, O. G. 1829. *Catalogo sistematico e ragionato dei Testacei delle sue Sicilie. Tipografia della Minerva, Naples, 1-8 + i-cxxxii pp., 2 pls.*
- Crosse, H. 1862. Description d'une espèce nouvelle appartenant au genre *Pisania*. *Journal de Conchyliologie*, 10: 251-252, pl. X, fig. 5 [sic, 7].
- 1869. Description d'espèces inédites provenant de la Nouvelle-Calédonie. *Journal de Conchyliologie*, 17: 24-28, pls. 1-2
- Dall, W. H. 1879. Report on the limpets and chitons of the Alaskan and Arctic regions, with descriptions of genera and species believed to be new. *Scientific Results of the Exploration of Alaska, Article 4, p. 63-126.*
- 1881. Reports on the results of dredging, under the supervision of Alexander Agassiz, in the Gulf of Mexico, and in the Caribbean Sea, 1877-79, by the United States Coast Survey Steamer "Blake," Lieutenant-Commander C. D. Sigsbee, U.S.N., and Commander J. R. Bartlett, U.S.N., commanding. XV. *Bulletin of the Museum of Comparative Zoology*, 9(2): 33-144.
- 1908. Reports on the dredging operations off the west coast of Central America to the Galapagos, to the west coast of Mexico, and in the Gulf of California, in charge of Alexander Agassiz, carried on by the U.S. Fish Commission Steamer "Albatross," during 1891. Lieut.-Commander Z. L. Tanner, U.S.N., commanding. XXXVII. Reports on the scientific results of the expedition to the eastern tropical Pacific, in charge of Alexander Agassiz, by the U.S. Fish Commission Steamer "Albatross," from October, 1904, to March, 1905. Lieut.-Commander L. M. Garrett, U.S.N., commanding. XIV. The Mollusca and Brachiopoda. *Bulletin of the Museum of Comparative Zoology*, 43(6): 205-487, pls. 1-22.
- Deshayes, G. P. 1855. Descriptions of new shells from the collection of Hugh Cuming, Esq. *Proceedings of the Zoological Society of London*, Part XXII, 1854: 317-371.
- 1863. *Catalogue des Mollusques de l'Île de la Réunion (Bourbon). Pp.*

- 1-144, pls. 28-41 [1-13]; Dentu, Paris.
- Dunker, W. 1847. [In:] Pfeiffer, L. Diagnosen neuer Heliceen. Zeitschrift für Malakozoologie, 4: 81-84.
- 1877. Mollusca nonnulla nova maris Japonici. Malakozoologische Blätter, 24: 67-75.
- Eichwald, E. 1838. Fauna Caspii maris primitiae. Bulletin de la Société Impériale des Naturalistes de Moscou, 11(2): 125-174.
- Fischer, P. 1878. Diagnoses trochorum novorum. Journal de Conchyliologie, 26: 62-67.
- 1883. Diagnoses d'espèces nouvelles de mollusques recueillis dans le cours de l'expédition scientifique du Talisman (1883). Journal de Conchyliologie, 31: 391-394.
- Folin, A. G. L. de, Marquess [and L. Périer]. 1867-1879. Les Fonds de la Mer. Étude internationale sur les particularités nouvelles des régions sous-marines, etc. Tom. I-III. Paris. [Fischer, P., L. de Folin & L. Périer. 1873. Les Fonds de la Mer. Vol. 2 (cover gives date as 1872); pp. 161-208 published in 1873].
- Forbes, E. & S. Hanley. 1852-1853. A history of British Mollusca, and their shells. Volume IV. Pulmonifera and Cephalopoda. Pp. i-vi, 1-301, pls. I-CXXXIII; John van Voorst, London.
- Frembly, J. 1827. A description of several new species of chitons, found on the coast of Chili, in 1825; with a few remarks on the method of taking and preserving them. The Zoological Journal, 3: 193-205.
- Fulton, H. 1899. A list of the species of land Mollusca collected by Mr. W. Doherty in the Malay Archipelago; with descriptions of some supposed new species and varieties. Proceedings of the Malacological Society of London, 3: 212-219, pl. 11.
- Gmelin, J. F. 1791. Caroli a Linné, Systema Naturae per Regna Tria Naturae, Secundum Classes, Ordines, Genera, Species, cum characteribus, differentiis, synonymis, locis. Editio Decima Tertia, Aucta, Reformata. Tom. 1(6), Vermes, pp. 3021-3910. Georg Emanuel Beer, Lipsiae [for a collation of this work see Kabat & Petit (1988)].
- Godwin-Austen, H. H. 1883. Land and Fresh-water Mollusca of India. Part III. Pp. 67-94, pls. 13-21; Taylor and Francis, London.
- Gould, A. A. 1846. [Shells collected by the United States Exploring Expedition under the command of Charles Wilkes]. Proceedings of the Boston Society of Natural History, 2: 141-145.
- 1852. Mollusca and shells. Vol. 12 [In:] United States Exploring Expedition during the years 1839-1842 under the command of Charles Wilkes U.S.N. Boston, December 1852, xv + 510 pp. [for a complete collation of this work, see Haskell (1942)].
- Gray, J. E. 1828-30. Spicilegia Zoologica; or original figures and short systematic

- descriptions of new and unfigured Animals. Richard Taylor, London, Parts I and II, pp. 12, 11 pls.
- Gredler, P. V. 1887. Zur Conchylien-Fauna von China. IX. Stück. Malakozoologische Blätter, Neue Folge, 9: 1-20.
- Gundlach, J. [In:] Poey, F. 1865. Descripción de tres moluscos terrestres. Repertorio Físico-Natural de la isla de Cuba, 1: 69-70.
- Haas, F. 1969. [In:] Moore, Raymond C. (ed.) Treatise on Invertebrate Paleontology. The Geological Society of America, Inc. and The University of Kansas, Part N, Mollusca 6, Bivalvia, Volume 1 (of 3): N411-N489.
- Haskell, D. C. 1942. The United States Exploring Expedition, 1838-1842, and its publication, 1844-1874. New York Public Library, 188 pp.
- Heath, H. 1911. Reports on the scientific results of the expedition to the tropical Pacific, in charge of Alexander Agassiz, by the U.S. Fish Commission Steamer "Albatross" from August, 1899, to June, 1900, Commander Jefferson F. Moser, U.S.N., Commanding. XIV. The Solenogastres. Memoirs of the Museum of Comparative Zoology, 45(1): 1-179, pls. 1-36.
- Hertlein, L. 1969. [In:] Moore, R. C. (ed.). Treatise on Invertebrate Paleontology. The Geological Society of America, Inc. and the University of Kansas, Part N, Mollusca 6, Bivalvia, Volume 1 (of 3): N348-N373.
- Hesse, P. 1916. Kritische Fragmente. Nachrichtenblatt der Deutschen Malakozoologischen Gesellschaft, 48(3): 122-124.
- Hwass, C. H. [In:] Bruguière, J.-G. 1792. Cone. [In:] Encyclopédie Méthodique. Histoire Naturelle des Vers. Tome Premier, Part 2, pp. 586-757; Paris, Panckoucke.
- [ICZN] International Commission on Zoological Nomenclature. 1961. International Code of Zoological Nomenclature. xvi (+1) + 176 pp.; International Trust for Zoological Nomenclature, London.
- [ICZN] International Commission on Zoological Nomenclature. 1971. Opinion 951. *Rhyssoplax* Thiele, 1893 (Amphineura): designation of a type-species under the Plenary Powers. Bulletin of Zoological Nomenclature, 28: 18-19.
- [ICZN] International Commission on Zoological Nomenclature. 1980. Opinion 1154. *Drupella* Thiele, 1925 (Mollusca, Gastropoda): designation of a type species by the use of Plenary Powers. Bulletin of Zoological Nomenclature, 37: 85-88.
- [ICZN] International Commission on Zoological Nomenclature. 1985. International Code of Zoological Nomenclature. Third Edition. xx + 338 pp.; International Trust for Zoological Nomenclature/British Museum (Natural History), London; University of California Press, Berkeley and Los Angeles.
- Issel, A. 1869. Malacologia del Mar Rosso ricerche zoologiche e paleontologiche. Biblioteca Malacologica, Pisa, 387 pp., 5 pls.
- Johnson, R. I. 1978. Systematics and zoogeography of *Plagiola* (= *Dysnomia* = *Epioblasma*), an almost extinct genus of freshwater mussels (Bivalvia:

- Unionidae) from middle North America. *Bulletin of the Museum of Comparative Zoology*, 148(6): 239-320, 15 pls.
- Kaas, P. & R. A. van Belle. 1980. Catalogue of living chitons (Mollusca: Polyplacophora). W. Backhuys, Rotterdam, 10 unnumbered pp. + 144 pp.
- Kaas, P. & R. A. van Belle. 1985a. Monograph of living chitons (Mollusca: Polyplacophora). Volume 1. Order Neoloricata: Lepidopleurina. E. J. Brill/W. Backhuys, Leiden, 240 pp.
- Kaas, P. & R. A. van Belle. 1985b. Catalogue of living chitons (Mollusca: Polyplacophora). Volume 2. Suborder Ischnochitonina. Ischnochitonidae: Schizoplacinae, Callochitoninae & Lepidochitoninae. E. J. Brill/W. Backhuys, Leiden, 198 pp.
- Kaas, P. & R. A. van Belle. 1987. Catalogue of living chitons (Mollusca: Polyplacophora). Volume 3. Suborder Ischnochitonina. Ischnochitonidae: Chaetopleurinae, & Ischnochitoninae (pars). Additions to Vols. 1 & 2. E. J. Brill/W. Backhuys, Leiden, 302 pp.
- Kaas, P. & R. A. van Belle. 1990. Catalogue of living chitons (Mollusca: Polyplacophora). Volume 4. Suborder Ischnochitonina. Ischnochitonidae: Ischnochitoninae (continued). Additions to vols. 1, 2 and 3. E. J. Brill, Leiden, 298 pp.
- Kabat, A. R. & R. E. Petit. 1988. The two printings of J. F. Gmelin's *Systema Naturae*, 13th edition (1788-1796). *Nautilus*, 102(4): 164-166.
- Keen, A. M. 1937. Nomenclatural units of the pelecypod family Cardiidae. *Bulletin du Musée royal d'Histoire naturelle de Belgique*, 13(7): 1-22.
- 1961. A proposed reclassification of the gastropod family Vermetidae. *Bulletin of the British Museum (Natural History), Zoology Series*, 7(3): 181-213, pls. 54, 55.
- 1969. [In:] Moore, Raymond C. (ed.). *Treatise on Invertebrate Paleontology*. The Geological Society of America, Inc. and the University of Kansas, Part N, Mollusca 6, Bivalvia, Volume 1 (of 3): N230-N231, N269-N270, Volume 2 (of 3): N583-N594, N613-N643, N852-N857.
- [Kobelt, W.] 1894. Literaturbericht. Troschel, Dr. H., Das Gebiss der Schnecken zur Begründung einer natürlichen Classification untersucht. Fortgesetzt von Dr. J. Thiele . . . *Nachrichtenblatt der Deutschen Malakozoologischen Gesellschaft*, 26(1-2): 25-27.
- Kowalevsky, A. 1900. Comptes rendu des mes études zoologiques à Sebastopol pendant l'été de 1899 (Communication préliminaire) [Otchet' o moikh' zoologicheskikh' v' Sevastopoli litom' 1899 goda]. *Bulletin de l'Académie Impériale des Sciences de St.-Pétersbourg [Izvestiya Imperatorskoi Akademii Nauk, S. Peterburg]*, (5)12(2): 193-204.
- 1901a. Sur le genre *Chaetoderma*. *Archives de Zoologie Expérimentale et Générale*, 9: 261-283, pls. 10-12.
- 1901b. Les Hedyliides. Étude anatomique. *Mémoires de l'Académie Impériale*

des Sciences de St. Pétersbourg, (8)12(6): 1-32, pls. 1-5.

- Krause, A. 1885. Ein Beitrag zur Kenntniss der Mollusken-Fauna des Beringsmeeeres. Brachiopoda und Lamellibranchiata. Archiv für Naturgeschichte, 51: part 1, 14-40, pl. 3; part 2, 256-302, pls. 16-18.
- Krauss, F. 1848. Die Südafrikanischen Mollusken. Von Ebner & Seubert, Stuttgart, [i-iv] + 1-140 pp, 6 pls.
- Küster, H. C. 1852. Die Gattungen *Paludina*, *Hydrocaena* und *Valvata*. [In:] Systematisches Conchylien-Cabinet von Martini und Chemnitz. 2nd Edition. Bauer und Raspe, Nürnberg, 1(21): 96 pp., 14 pls.
- Lamarck, J. B. P. A. d. M. d. 1798. Tableau Encyclopédie et Méthodique des trois règnes de la nature. Vers, coquilles, mollusques et polypiers. Agasse, Paris, 2(3): pls. 287-390.
- 1810. Suite de la détermination des espèces de mollusques testacés. Continuation du genre porcelaine, et genre ovule. Annales du Muséum National d'Histoire Naturelle, Paris, 16: 89-114.
- 1816. Tableaux Encyclopédique et méthodique des trois règnes de la nature. Vers, coquilles, mollusques et polypiers. 3(4): 391-488; Agasse, Paris.
- 1822. Histoire naturelle des animaux sans vertèbres, . . . 7: 1-711. Chez l'auteur, au Jardin de Roi, Paris.
- 1827. Tableau Encyclopédie et Méthodique des trois règnes de la nature. Vers, coquilles, mollusques et polypiers. Agasse, Paris, 1: i-viii, 1-180.
- Le Guillou, M. 1845 (May). Description de six Hélices nouvelle. Revue Zoologique par la Société Cuvierienne, 8: 187-188.
- Lea, I. 1829. No. XIII. Description of a new genus of the family of naiades, including eight species, four of which are new; also the description of eleven new species of the genus *Unio* from the rivers of the United States: with observations on some of the characters of the naiades. Transactions of the American Philosophical Society, new series, 3(4): 403-457.
- 1844. Continuation of Mr. Lea's paper on fresh water and land shells. Transactions of the American Philosophical Society, new series, 9 (1846): 1-31.
- Leche, W. 1878. Öfersigt öfver de af Svenska Expeditionerna till Novaja Semlja och Jenissej 1875 och 1876 insamlade hafs-mollusker. Kongliga Svenska Vetenskaps-Akademiens Handlingar, 16(2): 1-86, pls. 1-2.
- Linnaeus, C. [afterwards Carl von Linné]. 1758. Caroli Linnaei . . . Systema Naturae per Regna tria Naturae, secundum classes, ordines, genera, species, cum characteribus, differentiis, synonymis, locis . . . Editio decima reformata. Impensis Direct. Laurentii Salvii, Holmiae, Tom. 1. Animalia. [iv] + 823 pp.
- 1767. Caroli a Linné . . . Systema Naturae per Regna tria Naturae, secundum classes, ordines, genera, species, cum characteribus, differentiis, synonymis, locis . . . Editio duodecima, reformata. Impensis Direct.

- Laurentii Salvii: Holmiae, Tom. 1. Regnum Animale. Pars II. Classis V-VI, Nomina Generica. Nomina specierum propria: Nomina trivialia. Nomina trivialia Papilionum and Phalaenarum. Synonyma. Termini Artis. Appendix Synonymorum. Addenda. Errata, pp. 533-1327.
- Martens, E. von. 1870. Conchylien aus dem obern Nilgebiet. Malakozologische Blätter, 17: 32-36.
- 1876. Die von Prof. Dr. R. Buchholz in Westafrika gesammelten Land- und Süßwasser-Mollusken. Monatsberichte der Königlich Preussischen Akademie der Wissenschaften zu Berlin, 1876: 253-274, 5 pls.
- 1878. Uebersicht der von Hrn. J. M. Hildebrandt in Ost-Afrika gesammelten Land- und Süßwasser-Conchylien. Monatsberichte der Königlich Preussischen Akademie der Wissenschaften zu Berlin, 1878: 288-299, 2 pls.
- 1880. Herr v. Martens zeigte einige Landschnecken vor, welche Dr. O. Finsch auf den Karolinen gesammelt hat. Sitzungsberichte der Gesellschaft Naturforschender Freunde zu Berlin, 1880: 143-147.
- 1885. Vorläufige Mittheilung über die Molluskenfauna von Süd-Georgien. Sitzungsberichte der Gesellschaft Naturforschender Freunde zu Berlin, 1885: 89-94.
- 1897. Süß- und Brackwasser Mollusken des Indischen Archipels. [In:] Zoologische Ergebnisse einer Reise in Niederländisch Ost-Indien, 4: 1-331, 12 pls.
- 1901. Einige neue Meer-Conchylien von der deutschen Tiefsee-Expedition. Sitzungsberichte der Gesellschaft Naturforschender Freunde zu Berlin, 1901: 14-26.
- 1903. Herr von Martens legte einige neue Arten von Meer-Conchylien aus den Sammlungen der deutschen Tiefsee-Expedition unter der Leitung von Prof. Carl Chun 1890-99 vor. Sitzungsberichte der Gesellschaft Naturforschender Freunde zu Berlin, 1902: 237-244.
- 1904. Systematisch-geographischer Theil. [In:] Die beschalteten Gastropoden der deutschen Tiefsee-Expedition, 1898-1899. Wissenschaftliche Ergebnisse der deutschen Tiefsee-Expedition auf dem Dampfer "Valdivia" 1898-1899, 7(A): 1-146, pls. 1-5 [title page states "1903"].
- Martens, E. von & G. Pfeffer. 1886. Die Mollusken von Süd Georgien nach der Ausbeute der Deutschen Station, 1882-1883. Jahrbuch der Hamburgischen Wissenschaftlichen Anstalten, 3: 63-135, 4 pls.
- Martens, E. von & F. Wiegmann. 1898. Land- und Süßwasser-Mollusken der Seychellen. Mittheilungen aus der Zoologischen Sammlung des Museums für Naturkunde in Berlin, 1(1): 1-94, pls. 1-4. [Conchyliologischer Theil by von Martens; Zootomischer Theil by Wiegmann].
- Melvill, J. C. & R. Standen. 1901. The Mollusca of the Persian Gulf, Gulf of Oman and Arabian Sea, as evidenced mainly through the collections of Mr. F. W. Townsend, 1893-1900; with descriptions of new species.

- Proceedings of the Zoological Society of London, 1901: 327-460. pls. 21-24.
- Menke, K. T. 1843. Molluscorum Novae Hollandiae Specimen, quod ad celebrandum diem jubilaicum vicesimum sextum mensis februarii anni MDCCCXLIII quo per viginti quinque annos professoris muneri in illustri gymnasio academico hamburgensi parefuit vir doctissimus, clarissimus Joannes Georgius Christianus Lehmann, med. et philos. doctor, &c., scripsit Carolus Theodorus Menke. Hannoverae, in libraria Aulica Hahniana, pp. 46.
- Metcalfe, W. 1851. An enumeration of species of Recent shells, received by W. J. Hamilton, Esq., from Borneo, in November 1850, with descriptions of new species. Proceedings of the Zoological Society of London, 1851: 70-74.
- Mikkelsen, P. S. & P. M. Mikkelsen. 1984. Comparison of *Acteocina canaliculata* (Say, 1826), *A. candei* (d'Orbigny, 1841), and *A. atrata* spec. nov. (Gastropoda: Cephalaspidea). The Veliger, 27(2): 164-192, 13 text-figs.
- Möllendorff, O. F. von. 1882. Diagnoses specierum novarum Chinae meridionalis. Jahrbuch der Deutschen Malakozoologischen Gesellschaft, 9: 179-188.
- 1883. Materialien zur Fauna von China. Jahrbuch der Deutschen Malakozoologischen Gesellschaft, 10: 228-269, pl. 8.
- Morlet, L. 1884. Description d'espèces nouvelles de coquilles, recueillies par M. Pavie, au Cambodge. Journal de Conchyliologie, 32: 386-403, pls. 11-13.
- Murdoch, R. 1899. Description of *Sigaretus? drewi*, n.sp. (fossil), and *Cirsonella? neozelandica*, n. sp. from New Zealand; with notes on some New Zealand land Mollusca. Proceedings of the Malacological Society of London, 3: 320-325, pl. 16.
- Nesis, K. N. 1987. Cephalopods of the world. Translated from Russian by B. S. Levitov & edited by Lourdes A. Burgess. T.F.H. Publications, Neptune City, New Jersey, 351 pp., 88 figs.
- Nevill, G. 1880. New species of brackish-water mollusks. Journal of the Asiatic Society of Bengal, 49(2): 159-166.
- 1881a. Note on little known Mollusca of the Indo-Malayan Fauna. Journal of the Asiatic Society of Bengal, 50(2): 125-167, pls. 5-7.
- 1881b. Description of a new species of *Rostellaria* from the Bay of Bengal. Journal of the Asiatic Society of Bengal, 50(2): 262.
- Newcomb, W. 1864. Description of a new species of *Pedicularia*. Proceedings of the California Academy of Sciences, 3: 121-122.
- Newell, N. D. 1969. [In:] Moore, R. C. (ed.). Treatise on Invertebrate Paleontology. The Geological Society of America, Inc. and the University of Kansas, Part N, Mollusca 6, Bivalvia, Volume 1 (of 3): N261-N267.
- Nierstrasz, H. F. 1903. Neue Solenogastren. Zoologische Jahrbücher, Abteilung für Anatomie, 18: 359-386, 2 pls.

- Odhner, N. H. 1968. Opisthobranches. [In:] Franc, A. Gastéropodes. [In:] P.-P. Grassé (ed.). *Traité de Zoologie*, 5: 608-893. Masson, Paris.
- Orbigny, A. d'. 1842. Mollusques. [In:] Sagra, R. *Histoire Physique, Politique et Naturelle de l'île de Cuba*. Paris, vol. 2, 264 pp., 28 pls.
- Pease, W. H. 1865. Descriptions of new species of land shells from the islands of the Central Pacific. *Proceedings of the Zoological Society of London*, 1864: 668-676.
- 1868. Descriptions of sixty-five new species of marine gasteropoda, inhabiting Polynesia. *American Journal of Conchology*, 3: 271-297, pls. 23-24.
- Petit de la Saussaye, S. 1843. Descriptions of new species of shells belonging to the genus *Auricula*, collected by H. Cuming, Esq. *Proceedings of the Zoological Society of London*, Part X, 1842: 201-202.
- Petterd, W. F. 1879. New species of Tasmanian marine shells. *Journal of Conchology*, 2: 102-105.
- Pfeiffer, L. 1839. Bericht über die Ergebnisse meiner Reise nach Cuba im Winter 1838-1839. *Archiv für Naturgeschichte*, 5(1): 346-358.
- Philippi, R. A. 1836. *Enumeratio molluscorum Siciliae cum viventium tum in tellure Tertiaria fossilium quae in itinere suo observavit*. 1: i-xiv + 1-268 pp., pls. 1-12. Schroppii, Berolini [Berlin].
- 1844. *Enumeratio molluscorum Siciliae cum viventium tum in tellure Tertiaria fossilium quae in itinere suo observavit*. 2: i-iv + 1-304 pp., pls. 13-28. Anton, Halis Saxonum [Halle].
- 1846. Diagnosen neuer Conchylien-Arten. *Zeitschrift für Malakozoologie*, 3: 47-55.
- Pilsbry, H. A. 1895. Polyplacophora. Acanthochitidae, Cryptoplacidae and Appendix. Tectibranchia. *Manual of Conchology* (1)15(60): 181-436, pls. 43-50, 59-61.
- 1932. *Libera* or *Garrettina* (Endodontidae). *The Nautilus*, 46(2): 70-71.
- 1946. Land Mollusca of North America (North of Mexico). *Monograph of the Academy of Natural Sciences of Philadelphia*, Number 3, 2(1): i-vi, 1-520, figs. 1-281.
- Ponder, W. F. 1982. The anatomy and relationships of *Hydrococcus brazieri* (T. Woods). *Journal of Molluscan Studies*, 48: 64-79, 21 text-figs.
- 1985. A review of the genera of the Rissoidae (Mollusca: Mesogastropoda: Rissoacea). *Records of the Australian Museum* (1984), Supplement 4: 1-221, 153 figs.
- Ponder, W. F. and A. Warén. 1988. Appendix. Classification of the Caenogastropoda and Heterostropha—A list of the family-group names and higher taxa. *Malacological Review*, Supplement 4: 288-326.
- Potiez, V.-L.-V. & A.-L.-G. Michaud. 1838. *Galerie des Mollusques ou catalogue*

- méthodique, descriptif et raisonné des mollusques et coquilles du Muséum de Douai. Baillière, Paris, pp. [i]-xxxvi, 1-560, [1-4]; Atlas, pp. 1-79, 1-70.
- Powell, A. W. B. 1960. Antarctic and Subantarctic Mollusca. Records of the Auckland Institute and Museum, 5(3 and 4): 117-193.
- Pruvot, G. 1891. Sur l'organisation de quelques Néoméniens des côtes de France. Archives de Zoologie Expérimentale et Générale, 9: 699-805.
- Pruvot-Fol, A. 1954. Mollusques Opisthobranches. Faune de France, 58. Lechevalier, Paris, 460 pp.
- Putzeys, S. 1899. Diagnoses de quelques coquilles et d'un sous-genre nouveau provenant de l'état indépendant du Congo. Annales de la Société Royale Malacologique de Belgique, 34: L-LX, figs. 1-16.
- Quodras, J. F. & O. F. de Moellendorff. 1894. Diagnoses specierum novarum a J. F. Quodras in insulis Mariannis collectarum scripserunt. Nachrichtenblatt der Deutschen Malakozoologischen Gesellschaft, 26: 33-42.
- Quodras, J. F. & O. F. de Moellendorff. 1896. Diagnoses specierum novarum ex insulis Philippinis auctoribus. Nachrichtenblatt der Deutschen Malakozoologischen Gesellschaft, 28: 1-15.
- Quoy, J. J. C. & J. P. Gaimard. 1832-1835. Voyage de Découvertes de l'Astrolabe. Zoologie. J. Tastu, Paris, 2(1): 1-320 (1832), (2): 321-686 (1833); 3(1): 1-366 (1834), (2): 367-954 (1835); Atlas, Mollusques, plates 1-93 (1833).
- Rang, S. 1831. Descriptions des coquilles terrestres recueillies pendant un voyage à la côte occidentale d'Afrique, et au Brésil. Annales des Sciences Naturelles, Paris, 24: 5-63, pls. 1-3.
- Reeve, L. A. 1844 (June). Conchologica Iconica: or, illustrations of the shells of molluscous animals. Vol. II, Containing monographs of the genera . . . *Arca* . . . , species 115, plate 17, fig. 115.
- 1847a (May). Conchologica Iconica: or, illustrations of the shells of molluscous animals. Vol. IV, Monograph of the genus *Chiton*, plates 15 and 23.
- 1847b. Descriptions of new species of shells collected in the Eastern Archipelago by Capt. Sir Edward Belcher and Mr. Adams during the voyage of H.M.S. Samarang. Proceedings of the Zoological Society of London, 1847: 24-26.
- 1848 (December). Conchologica Iconica: or, illustrations of the shells of molluscous animals. Vol. V, Containing monographs of the genera *Bulimus* . . . , plate 256.
- 1854 (December). Conchologica Iconica: or, illustrations of the shells of molluscous animals. Vol. VII, Containing a monograph of the genus *Helix*, plate 208.
- Reinhardt, O. 1883. Herr O. Reinhardt legte einige ihm von Herrn Dr. W. Kobelt in Schwanheim a. M. zur Begutachtung übersandte, von Herrn Hungerford gesammelte japanische Hyalinen vor. Sitzungsberichte der

- Gesellschaft Naturforschender Freunde zu Berlin, 1883: 82-86.
- Risbec, J. 1928. Contribution a l'étude des nudibranches Néo-calédoniens. Faune des Colonies Française. Société d'Éditions, Paris, 2(1): 1-328, pls. 1-12, text-figs. 1-98.
- Salisbury, A. E. 1934. On the nomenclature of Tellinidae, with descriptions of new species and some remarks on distribution. Proceedings of the Malacological Society of London, 21: 74-91, pls. 9-14.
- Salvini-Plawen, L. von. 1978. Antarktische und subantarktische Solenogastres. Eine Monographie: 1898-1974. Zoologica, 44(2/128/2): 157-315, pls. I-II.
- Sars, G. O. 1878. Bidrag til Kundskaben om Norges arktiske Fauna. I. Mollusca Regionis Arcticae Norvegiae. Oversigt over de i Norges arktiske region forekommende bløddyr. Universitets program for første halvår 1878. Brøgger, Christiania, 466 pp.
- Say, T. 1821. Descriptions of univalve shells of the United States. Journal of the Academy of Natural Sciences of Philadelphia, 2: 149-179.
- 1826. Descriptions of marine shells recently discovered on the coast of the United States. Journal of the Academy of Natural Sciences of Philadelphia, 5: 207-221.
- Schepman, M. M. 1903. Descriptions of three new species of *Oliva* from the Siboga Expedition. Tijdschrift der Nederlandsche Dierkundige Vereeniging, Leiden, (2)8: 67-69
- 1911. The Prosobranchia of the Siboga Expedition. Part IV. The Rachiglossa. Siboga-Expeditie, 49d: 243-363, 7 pls.
- 1911 [1913]. The Prosobranchia of the Siboga Expedition. Part V. Toxoglossa. Siboga-Expeditie, 49e: 365-452, 6 pls., 1 text-fig.
- Sherborn, C. D. & B. B. Woodward. 1906. On the dates of publication of the natural history portions of the "Encyclopédie Méthodique." Annals and Magazine of Natural History, (7)17(97): 577-582.
- Smith, A. G. 1960. Amphineura. [In:] Moore, R. C. (ed.). Treatise on Invertebrate Paleontology. The Geological Society of America, Inc. and the University of Kansas, Part I, Mollusca 1: I41-I76, figs. 31-45.
- Smith, E. A. 1893. Descriptions of new species of *Helix*, *Rissoina* and *Actaeon*. The Conchologist, 2(5): 97-100, text-figs.
- 1902. Mollusca. Report on the collections of natural history made in the antarctic regions during the voyage of the "Southern Cross." London, pp. 201-213, pls. 24, 25.
- 1903. Descriptions of new species of land shells from Central Africa. Journal of Conchology, 10(10): 315-319, pl. 4.
- 1904a. On a collection of marine shells from Port Alfred, Cape Colony. The Journal of Malacology, 11(2): 21-43, pls. 2-3.
- 1904b. Natural history notes from H. M. Indian Marine Survey Steamer

- 'Investigator,' Commander T. H. Heming, R.N. Series III, No. 1. On Mollusca from the Bay of Bengal and the Arabian Sea. *Annals and Magazine of Natural History*, (7)14: 1-14.
- 1907. Mollusca II. Gastropoda. [In:] National Antarctic ("Discovery") Expedition, 1901-1904. *Natural History*, Vol. II, Zoology. (Vertebrata; Mollusca; Crustacea). British Museum (Natural History), London, pp. 1-12, pls. 1-2.
- Sowerby, G. B. [I]. 1825. A catalogue of the shells contained in the collection of the late Earl of Tankerville, arranged according to the Lamarckian Conchological System; together with an appendix containing descriptions of many new species. Stirling, London, pp. i-vii, 1-92, i-xxxiv, 9 unnumbered plates.
- 1832. Characters of new species of Mollusca and Conchifera, collected by Mr. Cuming. *Proceedings of the committee of science and correspondence of the Zoological Society of London*, Part II, 1832: 25-33, 50-61, 104-108.
- 1838. A descriptive catalogue of the species of Leach's genus *Margarita*. *The Malacological and Conchological Magazine*, London, Part 1, pp. 23-27.
- Sowerby, G. B., Junior [II]. 1842. *Thesaurus Conchyliorum* or figures and descriptions of Recent shells. Part II. Containing monographs of the genera *Pteroceras*, *Pecten*, and *Hinnites*. Sowerby, London, pp. 41-82, pls. 11-20.
- 1844. *Thesaurus Conchyliorum* or figures and descriptions of Recent shells. Part IV. Containing monographs of the genera *Scalaria*, and *Columbella*. Sowerby, London, pp. 83-146, pls. 32-50.
- 1855. *Thesaurus Conchyliorum* or figures and descriptions of Recent shells. Part XVI. Containing a monograph of *Cerithium* . . . Sowerby, London, pp. 847-899, pls. 176-186.
- 1873. Descriptions of twelve new species of shells. *Proceedings of the Zoological Society of London*, 1873: 718-722, pl. 59.
- Sowerby, G. B. III. 1900. On some marine shells from Pondoland and the Kowie, with descriptions of seventeen new species. *Proceedings of the Malacological Society of London*, 4: 1-7, pl. 1.
- 1905. Descriptions of seven new species of marine Mollusca from the collection of the late Admiral Keppel. *Proceedings of the Malacological Society of London*, 6: 279-282, 6 text-figs.
- Stenzel, H. B. 1971. [In:] Moore, R. C. (ed.). *Treatise on Invertebrate Paleontology*. The Geological Society of America, Inc. and the University of Kansas, Part N, Mollusca 6, Bivalvia, Volume 3 (of 3): N953-N1124.
- Strebel, H. 1905. Beiträge zur Kenntnis der Molluskenfauna der Magalhaen-Provinz. No. III. *Zoologische Jahrbücher, Abteilung für Systematik*, 22: 575-666, 4 pls.
- 1908. Die Gastropoden (mit Ausnahme der nackten Opisthobranchier).

- Wissenschaftliche Ergebnisse der Schwedischen Südpolar-Expedition 1901-1903, 6(1): 1-112, 6 pls.
- Sykes, E. R. 1903. Descriptions of new land shells from the Austro-Malayan Region. *Journal of Malacology*, 10: 64-67.
- Tate, R. 1893. On some new species of Australian marine Gastropoda. *Transactions of the Royal Society of South Australia*, 17: 189-197, pl. 5.
- Tenison-Woods, J. E. 1876. Descriptions of new Tasmanian shells. *Papers and Proceedings of the Royal Society of Tasmania for 1875*: 134-162.
- Thiele, J. [see Bieler & Boss 1989].
- Tomlin, J. R. le B. 1936. Book notes. *Proceedings of the Malacological Society of London*, 22(3): 135-137.
- Valenciennes, A. [In:] Lamarck, J. B. P. A. d. M. d. 1827. *Tableau Encyclopédie et Méthodique des trois règnes de la nature. Vers, coquilles, mollusques et polypiers*. Agasse, Paris, 1: i-viii, 1-180 [p. 154 is caption to Plate 287 with figure 3 listed as *Tellina plicata*, Val.].
- Vaught, K. C. 1989. *A Classification of the Living Mollusca*. American Malacologists, Inc., Melbourne, Florida, xii + 195 pp.
- Vélain, C. 1877. Passage de Vénus sur le Soleil (9 Décembre 1874). *Expédition française aux Iles Saint-Paul et Amsterdam. Zoologie. Observation générales sur la faune des deux îles suivies d'une description des mollusques*. *Archives de Zoologie Expérimentale et Générale*, 6: 1-144, pls. 1-5.
- Vokes, H. E. 1980. *Genera of the Bivalvia: a systematic and bibliographic catalogue (revised and updated)*. Paleontological Research Institution, Ithaca, New York, xxvii + 307 pp.
- Walker, B. 1915. Apical characters in *Somatogyrus*, with descriptions of three new species. *The Nautilus*, 29: 37-41; 49-53, 4 text-figs.
- Warén, A. 1980. Marine Mollusca described by John Gwyn Jeffreys, with the location of the type material. *Conchological Society of Great Britain and Ireland, Special Publications No. 1*, 60 pp., 8 pls.
- Watson, R. B. 1882. Mollusca of H.M.S. 'Challenger' Expedition. Part XIII. *Journal of the Linnean Society of London*, 16: 358-372.
- 1886. Report on the Scaphopoda and Gasteropoda collected by H.M.S. 'Challenger' during the years 1873-1876. Report on the Scientific Results of the Challenger Expedition, *Zoology*, 15(42): 1-756, pls. 4-50.
- Wenz, W. 1938-1944. *Gastropoda. Teil 1: Allgemeiner Teil und Prosobranchia*. [In:] Schindewolf, O.H. (ed). *Handbuch der Paläozoologie*, 6(1): i-xii, 1-1639. Borntraeger, Berlin [pp. 1-240, March 1938; 241-480, October 1938; 481-720, July 1939; 721-960, August 1940; 961-1200, October 1941; 1201-1506, October 1943; 1507-1639, i-xii, November 1944].
- Yen, T.-C. 1939. Die chinesischen Land- und Süßwasser-Gastropoden des Natur-Museum Senckenberg. *Abhandlungen der Senckenbergischen Natur-*

forschenden Gesellschaft, 444: 1-233, 16 pls.

Zilch, A. 1959-1960. Gastropoda von Wilhelm Wenz. Teil 2. Euthyneura. [In:] Schindewolf, O.H. (ed). Handbuch der Paläozoologie, 6(2): i-xii, 1-835, 2515 figs. Borntraeger, Berlin [pp. 1-200, 17 July 1959; 201-400, 25 November 1959; 401-600, 30 March 1960; 601-835, i-xii, 15 August 1960].

ACKNOWLEDGMENTS

We thank Prof. Dr. Rudolf Kilius (Museum für Naturkunde, Humboldt Universität, Berlin) for providing Thiele's photograph as well as the sample of his handwriting, and Ms. Kathie Way (The Natural History Museum, London) for a copy of Thiele's 1923 letter to that museum. Dr. Alan Kabat (National Museum of Natural History, Washington) directed our attention to omissions in our previous paper; Ms. Paula M. Mikkelsen kindly supplied information on Thiele's opisthobranch taxa, and Mr. Richard I. Johnson commented expertly on an earlier draft of the manuscript.

The manuscript was reviewed by Dr. Alan R. Kabat (National Museum of Natural History, Washington, DC), Ms. Paula M. Mikkelsen (Harbor Branch Oceanographic Museum, Ft. Pierce, FL) and Mr. Richard E. Petit (North Myrtle Beach, SC).

ADDITIONS AND CORRECTIONS TO PART 1
(*Nemouria*, 34, 1989):

Page 3, fourth paragraph: for 1960, read 1860.

Page 5, last paragraph: for 1911f, read 1911b.

Add asterisks to the following entries in section A. **Publications on Mollusca**: 1925d (p. 21), 1928d (p.22).

Previously omitted malacological publications by J. Thiele:

Carl Chun (1852-1914) is best known among malacologists for his fundamental monograph on the 'Valdivia' cephalopods. He died before completing this work and Thiele wrote several sections toward the end. Thiele should be credited with the authorship of those new taxa (as "Thiele *in* Chun 1915"):

- * 1915d. *Polypus* (pp. 485-487, English edition pp. 378-380), *Bolitaenidae* (pp. 490-494, English edition pp. 383-386), *Amphitreutidae* (pp. 531-533, English edition pp. 415-416), *Vampyroteuthidae* (pp. 534-536, English edition pp. 419-420), *Cirroteuthidae* (pp. 536-538, English edition pp. 421-422). [In:] Chun, C. Die Cephalopoden. II. Teil: Myopsida, Octopoda. Wissenschaftliche Ergebnisse der deutschen Tiefsee-Expedition auf dem Dampfer "Valdivia" 1898-1899, 18(2); Jena (Gustav Fischer). [English language translation: Carl Chun (C. F. E. Roper & I. H. Roper, eds.), *The Cephalopoda*. Israel Program for Scientific Translations, Keter Publishing House Jerusalem Ltd., 1975]

Another posthumous publication contains some of Thiele's contributions to the Kükenthal-Krumbach *Handbuch der Zoologie*. As this work was issued in signatures, his last portion on cephalopods (pp. 257-258) was not published until 1956; it was apparently issued with S. Jaeckel's addendum to the Mollusca (pp. 259-275):

1956. **Mollusca = Weichtiere**. [In:] Kükenthal, W. & Krumbach, T. (eds.): *Handbuch der Zoologie. Eine Naturgeschichte der Stämme des Tierreiches*, 5(4): 257-258, text-figs. 341-343; Berlin and Leipzig (Walter de Gruyter), 1956 [posthumously continued from 1925d, 1926a and 1926b].

Founding Editor
JOHN E. DU PONT

Managing Editor
RÖDIGER BIELER

Consulting Editors

WILLIAM K. EMERSON, American Museum of Natural History, New York, NY.

M. G. HARASEWYCH, National Museum of Natural History, Smithsonian Institution, Washington, DC.

KENNETH C. PARKES, Carnegie Museum of Natural History, Pittsburgh, PA.

RICHARD W. THORINGTON, JR., National Museum of Natural History, Smithsonian Institution, Washington, DC.

Published by the

DELAWARE MUSEUM OF NATURAL HISTORY
4840 Kennett Pike, Wilmington,
Delaware 19807, U.S.A.