

APPENDIX H

BENTHIC INFAUNA DATA

Raw Benthic Infauna Counts

Benthic Infaunal Community Metrics Summary

Appendix Table H-2. Benthic Infauna SQO Metric Scores and Various Community Metrics

RHMP 2013

Region	Stratum Category	Station	BRI Score*	IBI Score*	RBI Score*	RIVPACS Score*	Integrated SQO Benthic Assessment Score*	Site Abundance	Taxa Richness	Shannon-Weiner Index	% Sensitive**	% Dominant	% Dominant 3 species	% polychaete taxa	% polychaete individuals	% bivalve taxa	% bivalve individuals
Dana Point Harbor	Marina	B13-8259	53.5	2	0.05	0.40	3	46	14	2.24	0.0%	22.2%	60.0%	53.8%	62.2%	15.4%	17.8%
Dana Point Harbor	Deep	B13-8263	37.2	0	0.58	0.81	1	536	51	2.46	21.3%	34.2%	62.7%	33.3%	77.8%	17.6%	3.5%
Dana Point Harbor	Shallow	B13-8265	51.7	1	0.31	0.80	2	443	43	2.52	16.3%	25.4%	56.9%	9.5%	13.4%	45.2%	71.2%
Dana Point Harbor	Marina	B13-8267	50.2	3	0.01	0.18	4	51	6	1.21	16.7%	41.2%	94.1%	66.7%	86.3%	16.7%	11.8%
Oceanside Harbor	Marina	B13-8233	50.3	1	0.10	0.53	3	69	22	2.44	5.0%	34.6%	52.6%	60.9%	47.4%	17.4%	12.8%
Oceanside Harbor	Deep	B13-8236	39.2	1	0.26	0.53	2	86	25	2.87	14.3%	18.6%	45.4%	53.8%	70.1%	7.7%	14.4%
Oceanside Harbor	Deep	B13-8239	30.8	2	0.09	0.71	3	342	39	2.20	18.8%	44.2%	69.0%	10.3%	2.9%	51.3%	88.3%
Mission Bay	Deep	B13-8145	28.3	0	0.51	0.80	1	570	56	2.62	22.2%	16.6%	49.4%	44.6%	67.5%	16.1%	9.3%
Mission Bay	Marina	B13-8146	35.8	0	0.50	0.87	1	1316	93	3.21	19.2%	18.8%	38.5%	39.6%	56.5%	5.2%	0.6%
Mission Bay	Marina	B13-8151	31.2	0	0.52	0.59	1	1549	93	3.18	21.1%	22.2%	39.4%	22.8%	16.1%	9.8%	1.9%
Mission Bay	Deep	B13-8152	32.4	1	0.21	0.35	2	195	49	2.44	18.9%	48.7%	58.9%	32.0%	9.1%	16.0%	5.6%
Mission Bay	Shallow	B13-8156	38.9	0	0.52	0.83	1	1097	71	3.21	19.6%	19.6%	35.2%	33.3%	46.7%	9.7%	1.3%
Mission Bay	Shallow	B13-8157	31.1	1	0.28	0.36	2	3024	68	2.38	13.0%	35.7%	57.5%	26.9%	26.9%	9.5%	0.9%
Mission Bay	Shallow	B13-8159	41.7	0	0.12	0.63	3	395	29	2.24	24.0%	37.5%	59.8%	43.3%	65.4%	13.3%	7.6%
Mission Bay	Freshwater-Influenced	B13-8160	44.6	0	0.24	0.87	2	673	46	3.00	22.5%	19.3%	38.3%	26.7%	49.3%	13.3%	16.4%
Mission Bay	Freshwater-Influenced	B13-8163	39.2	0	0.23	0.65	2	1432	48	2.40	21.1%	41.1%	58.7%	28.6%	21.0%	6.1%	0.5%
San Diego Bay - North	Deep	B13-8085	24.1	0	0.25	0.64	2	511	56	2.82	28.3%	15.7%	41.3%	50.0%	61.3%	21.4%	6.4%
San Diego Bay - North	Marina	B13-8102	38.6	0	0.39	0.89	1	265	43	2.85	21.1%	25.9%	40.4%	35.6%	56.0%	17.8%	6.4%
San Diego Bay - North	Shallow	B13-8105	34.2	1	0.32	0.70	2	129	34	3.03	17.9%	16.8%	38.2%	43.8%	59.5%	9.4%	7.6%
San Diego Bay - North	Marina	B13-8106	36.8	0	0.24	0.84	2	449	54	3.01	22.4%	13.3%	37.5%	44.4%	58.3%	14.8%	9.5%
San Diego Bay - North	Deep	B13-8108	39.6	0	0.21	0.75	2	378	41	2.66	23.7%	18.8%	49.1%	42.5%	60.7%	15.0%	10.3%
San Diego Bay - North	Deep	B13-8109	32.1	0	0.61	0.71	1	258	40	2.82	28.6%	25.6%	45.5%	45.0%	41.4%	17.5%	23.3%
San Diego Bay - North	Deep	B13-8111	37.3	1	0.13	0.50	3	119	34	2.96	11.1%	30.2%	52.1%	44.1%	63.3%	8.8%	14.8%
San Diego Bay - North	Deep	B13-8112	39.6	1	0.28	0.50	2	467	78	3.70	8.2%	12.2%	24.3%	42.0%	48.9%	8.6%	10.5%
San Diego Bay - North	Marina	B13-8113	51.4	1	0.10	0.42	3	199	20	2.27	11.8%	28.9%	56.4%	50.0%	70.1%	10.0%	2.0%
San Diego Bay - North	Marina	B13-8116	45.5	0	0.22	0.79	2	540	53	2.79	23.4%	28.3%	52.3%	48.1%	60.7%	9.3%	2.3%
San Diego Bay - North	Marina	B13-8117	44.3	1	0.07	0.23	3	81	15	2.03	15.4%	30.1%	67.7%	53.3%	48.4%	20.0%	6.5%
San Diego Bay - North	Deep	B13-8118	40.1	1	0.36	0.51	2	154	26	2.61	8.3%	18.7%	43.4%	48.3%	62.0%	20.7%	18.7%
San Diego Bay - North	Marina	B13-8121	52.8	1	0.17	0.72	3	200	28	2.62	14.8%	22.4%	43.3%	28.6%	30.3%	17.9%	7.5%
San Diego Bay - North	Deep	B13-8122	34.1	0	0.85	0.88	1	788	53	2.77	25.0%	18.3%	43.2%	51.8%	70.0%	10.7%	6.4%
San Diego Bay - North	Shallow	B13-8123	38.0	0	1.05	1.10	1	625	50	2.74	21.7%	23.7%	41.7%	48.1%	42.7%	11.1%	26.7%
San Diego Bay - North	Shallow	B13-8124	37.0	1	0.57	0.83	2	564	57	2.98	13.7%	21.1%	44.8%	38.3%	74.7%	11.7%	4.2%
San Diego Bay - North	Marina	B13-8127	48.3	1	0.10	0.44	3	116	17	1.73	18.8%	25.2%	54.6%	38.9%	63.9%	22.2%	16.8%
San Diego Bay - North	Shallow	B13-8128	56.6	1	0.11	0.43	3	71	18	1.34	12.5%	21.4%	42.9%	40.0%	45.2%	15.0%	29.8%
San Diego Bay - North	Freshwater-Influenced	B13-8500	43.1	0	0.41	0.88	2	442	54	3.18	20.5%	16.6%	33.8%	14.8%	5.2%	51.9%	81.4%
San Diego Bay - Central	Deep	B13-8045	38.4	1	0.30	0.54	2	107	25	2.07	18.2%	44.0%	66.4%	50.0%	44.8%	23.1%	48.8%
San Diego Bay - Central	Industrial/Port	B13-8049	41.8	0	0.28	0.65	2	185	28	2.32	19.2%	32.4%	56.9%	61.3%	54.2%	16.1%	39.4%
San Diego Bay - Central	Industrial/Port	B13-8050	42.7	0	0.13	0.70	3	263	30	2.48	25.0%	25.1%	49.3%	61.3%	83.8%	16.1%	12.7%
San Diego Bay - Central	Shallow	B13-8052	48.6	1	0.35	0.75	2	166	26	2.48	16.0%	28.8%	50.0%	42.9%	31.5%	25.0%	55.4%
San Diego Bay - Central	Industrial/Port	B13-8053	38.3	0	0.60	0.94	1	590	45	2.84	26.2%	20.7%	42.9%	44.7%	78.9%	12.8%	5.7%
San Diego Bay - Central	Industrial/Port	B13-8056	45.6	1	0.14	0.67	3	148	27	2.58	16.0%	19.6%	51.1%	40.0%	64.7%	10.0%	21.2%
San Diego Bay - Central	Shallow	B13-8058	42.0	1	0.34	0.55	2	195	23	2.36	15.0%	31.0%	57.0%	50.0%	42.0%	32.0%	49.0%
San Diego Bay - Central	Shallow	B13-8060	41.0	1	0.34	0.51	2	270	26	2.65	8.7%	16.2%	40.1%	42.3%	39.3%	26.9%	54.4%
San Diego Bay - Central	Industrial/Port	B13-8064	54.4	3	0.00	0.15	4	6	4	1.24	0.0%	50.0%	83.3%	100.0%	100.0%	0.0%	0.0%
San Diego Bay - Central	Industrial/Port	B13-8065	44.7	1	0.19	0.75	2	475	45	2.60	10.0%	30.6%	51.2%	48.9%	48.2%	10.6%	37.6%
San Diego Bay - Central	Industrial/Port	B13-8066	48.3	1	0.11	0.65	3	132	27	2.63	8.0%	23.1%	46.2%	55.2%	42.7%	10.3%	43.4%
San Diego Bay - Central	Shallow	B13-8068	41.5	0	0.48	0.85	2	334	39	2.79	19.4%	28.0%	48.4%	36.6%	61.1%	17.1%	12.4%
San Diego Bay - Central	Industrial/Port	B13-8069	48.3	0	0.08	0.55	3	237	27	2.28	25.0%	30.0%	55.9%	44.4%	46.3%	11.1%	45.9%
San Diego Bay - Central	Marina	B13-8073	43.6	2	0.11	0.66	3	245	25	2.22	13.0%	28.2%	57.0%	55.6%	60.3%	3.7%	1.4%
San Diego Bay - Central	Freshwater-Influenced	B13-8074	51.7	1	0.09	0.71	3	171	30	2.51	12.5%	34.4%	49.5%	58.1%	76.9%	12.9%	12.4%
San Diego Bay - Central	Freshwater-Influenced	B13-8075	53.1	1	0.11	0.56	3	81	29	2.91	8.0%	16.0%	40.4%	48.3%	75.5%	6.9%	2.1%
San Diego Bay - Central	Freshwater-Influenced	B13-8076	46.3	0	0.14	0.76	2	301	39	2.75	21.2%	23.4%	49.4%	56.1%	72.1%	14.6%	20.1%
San Diego Bay - Central	Freshwater-Influenced	B13-8077	50.7	0	0.11	0.80	3	208	30	2.55	21.4%	23.5%	50.9%	50.0%	81.6%	16.7%	13.2%
San Diego Bay - Central	Deep	B13-8078	39.1	0	0.59	0.77	1	445	38	2.94	19.4%	12.1%	32.1%	52.5%	49.1%	17.5%	34.3%
San Diego Bay - Central	Deep	B13-8087	34.8	0	0.39	0.87	1	591	51	2.11	28.3%	47.5%	67.8%	44.2%	83.8%	13.5%	4.5%
San Diego Bay - Central	Industrial/Port	B13-8090	51.9	1	0.09	0.55	3	128	27	2.67	13.0%	17.8%	45.0%	60.7%	64.5%	17.9%	25.4%
San Diego Bay - Central	Deep	B13-8093	29.3	0	0.70	0.80	1	493	51	3.11	23.9%	12.4%	31.6%	43.4%	46.9%	18.9%	14.9%
San Diego Bay - Central	Industrial/Port	B13-8095	38.1	1	0.09	0.35	3	150	25	2.34	15.0%	35.3%	56.7%	48.0%	26.0%	16.0%	38.7%
San Diego Bay - Central	Industrial/Port	B13-8096	31.7	0	0.58	0.85	1	251	47	3.17	26.2%	13.8%	31.2%	37.0%	42.1%	17.4%	19.8%

**Appendix Table H-2. Benthic Infauna SQO Metric Scores and Various Community Metrics
RHMP 2013**

Region	Stratum Category	Station	BRI Score*	IBI Score*	RBI Score*	RIVPACS Score*	Integrated SQO Benthic Assessment Score*	Site Abundance	Taxa Richness	Shannon-Weiner Index	% Sensitive**	% Dominant	% Dominant 3 species	% polychaete taxa	% polychaete individuals	% bivalve taxa	% bivalve individuals
San Diego Bay - Central	Industrial/Port	B13-8098	30.4	0	0.72	0.82	1	412	53	3.03	24.5%	20.3%	38.1%	42.6%	30.2%	20.4%	20.3%
San Diego Bay - Central	Industrial/Port	B13-8099	35.5	0	0.36	0.81	1	140	35	2.68	21.9%	27.6%	51.9%	47.2%	46.8%	13.9%	35.3%
San Diego Bay - Central	Industrial/Port	B13-8100	45.6	1	0.36	0.71	2	246	32	2.60	16.7%	27.6%	50.0%	48.5%	46.1%	12.1%	39.0%
San Diego Bay - South	Marina	B13-8013	65.1	1	0.06	0.32	4	131	11	1.56	20.0%	58.8%	89.3%	30.0%	29.8%	20.0%	5.3%
San Diego Bay - South	Marina	B13-8014	47.2	1	0.07	0.64	3	840	33	1.68	15.4%	46.2%	81.3%	47.1%	23.8%	2.9%	6.1%
San Diego Bay - South	Shallow	B13-8017	41.1	1	0.13	0.62	3	280	40	2.82	13.3%	18.2%	43.8%	40.0%	60.3%	10.0%	6.5%
San Diego Bay - South	Shallow	B13-8018	54.1	0	0.05	0.05	4	406	22	2.21	29.4%	24.0%	56.0%	47.6%	29.4%	9.5%	0.5%
San Diego Bay - South	Shallow	B13-8020	48.5	1	0.14	0.84	2	337	30	2.12	17.9%	44.9%	62.6%	51.6%	73.1%	19.4%	20.5%
San Diego Bay - South	Freshwater-Influenced	B13-8028	43.8	1	0.29	0.60	2	198	29	2.55	8.0%	22.4%	51.5%	54.5%	90.4%	21.2%	5.5%
San Diego Bay - South	Freshwater-Influenced	B13-8029	42.1	1	0.54	0.75	2	92	27	2.74	16.0%	18.2%	42.7%	51.7%	76.4%	17.2%	13.6%
San Diego Bay - South	Freshwater-Influenced	B13-8030	49.0	1	0.05	0.40	3	33	14	2.36	14.3%	25.0%	54.5%	60.0%	81.8%	13.3%	9.1%
San Diego Bay - South	Freshwater-Influenced	B13-8031	42.8	0	0.35	0.85	2	128	27	2.31	23.1%	28.8%	61.8%	54.8%	82.2%	22.6%	9.9%
San Diego Bay - South	Freshwater-Influenced	B13-8033	42.6	0	0.15	0.62	3	581	41	1.94	20.6%	53.3%	67.8%	39.0%	24.0%	9.8%	60.7%
San Diego Bay - South	Freshwater-Influenced	B13-8036	42.5	1	0.09	0.50	3	202	22	1.06	10.0%	59.0%	84.2%	52.0%	93.8%	16.0%	1.8%
San Diego Bay - South	Freshwater-Influenced	B13-8038	41.9	1	0.11	0.60	3	213	31	2.61	15.4%	19.8%	45.1%	54.5%	73.8%	12.1%	14.3%
San Diego Bay - South	Freshwater-Influenced	B13-8040	41.9	1	0.20	0.86	2	595	52	2.60	12.8%	31.6%	55.1%	5.7%	35.0%	37.7%	50.2%

% = percent; BRI = Benthic Response Index; IBI = Index of Biotic Integrity; RBI = Relative Benthic Index; RIVPACS = Riverine Invertebrate Prediction and Classification System; SQO = Sediment Quality Objective.

* For these metrics, SQO methodology was used (see Chapter 5 of the SQO manual). The lowest possible taxonomic level was identified. To minimize the problem of variants, standard spelling and formation for names is based on names in the SQO species list on the Sediment Quality Assessment Tools page of the SCCWRP website (www.sccwrp.org), and Edition 5 of the SCAMIT taxonomic listing. In some cases, the lowest level identification was not available on the SCAMIT taxonomic listing; thus, the identification was rolled up to the lowest level available.

** % Sensitive derived from the SQO Calculator Tool results.

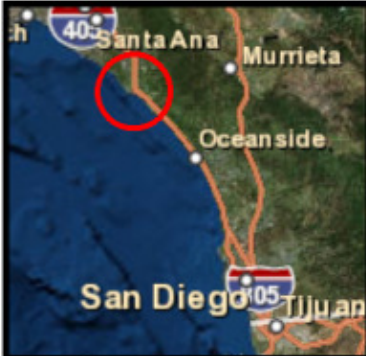
**Benthic Infaunal Community
SQO Lines of Evidence
Matrix**

**Appendix Table H-3. RHMP '13 Sediment Quality Objectives (SQO) Assessment
Final Results - RHMP 2013
Benthic Community Individual Lines of Evidence (LOE)**

Region	Stratum Category	Station	BRI Score	BRI Disturbance Category	IBI Score	IBI Disturbance Category	RBI Score	RBI Disturbance Category	RIVPACS Score	RIVPACS Disturbance Category	Benthic Assessment Score	Benthic Community Integrated LOE Disturbance Level
Dana Point Harbor	Marina	B13-8259	53.5	Moderate	2	Moderate	0.05	High	0.40	Moderate	3	Moderate
	Deep	B13-8263	37.2	Reference	0	Reference	0.58	Reference	0.81	Low	1	Reference
	Shallow	B13-8265	51.7	Moderate	1	Low	0.31	Reference	0.80	Low	2	Low
Oceanside Harbor	Marina	B13-8267	50.2	Moderate	3	High	0.01	High	0.18	High	4	High
	Marina	B13-8233	50.3	Moderate	1	Low	0.10	Moderate	0.53	Moderate	3	Moderate
	Deep	B13-8236	39.2	Reference	1	Low	0.26	Low	0.53	Moderate	2	Low
Mission Bay	Deep	B13-8239	30.8	Reference	2	Moderate	0.09	Moderate	0.71	Moderate	3	Moderate
	Deep	B13-8145	28.3	Reference	0	Reference	0.51	Reference	0.80	Low	1	Reference
	Marina	B13-8146	35.8	Reference	0	Reference	0.50	Reference	0.87	Low	1	Reference
	Marina	B13-8151	31.2	Reference	0	Reference	0.52	Reference	0.59	Moderate	1	Reference
	Deep	B13-8152	32.4	Reference	1	Low	0.21	Low	0.35	Moderate	2	Low
	Shallow	B13-8156	38.9	Reference	0	Reference	0.52	Reference	0.83	Low	1	Reference
	Shallow	B13-8157	31.1	Reference	1	Low	0.28	Reference	0.36	Moderate	2	Low
	Shallow	B13-8159	41.7	Low	0	Reference	0.12	Moderate	0.63	Moderate	3	Moderate
	Freshwater	B13-8160	44.6	Low	0	Reference	0.24	Low	0.87	Low	2	Low
	Freshwater	B13-8163	39.2	Reference	0	Reference	0.23	Low	0.65	Moderate	2	Low
San Diego Bay - North	Deep	B13-8085	24.1	Reference	0	Reference	0.25	Low	0.64	Moderate	2	Low
	Marina	B13-8102	38.6	Reference	0	Reference	0.39	Reference	0.89	Low	1	Reference
	Shallow	B13-8105	34.2	Reference	1	Low	0.32	Reference	0.70	Moderate	2	Low
	Marina	B13-8106	36.8	Reference	0	Reference	0.24	Low	0.84	Low	2	Low
	Deep	B13-8108	39.6	Reference	0	Reference	0.21	Low	0.75	Low	2	Low
	Deep	B13-8109	32.1	Reference	0	Reference	0.61	Reference	0.71	Moderate	1	Reference
	Deep	B13-8111	37.3	Reference	1	Low	0.13	Moderate	0.50	Moderate	3	Moderate
	Deep	B13-8112	39.6	Reference	1	Low	0.28	Reference	0.50	Moderate	2	Low
	Marina	B13-8113	51.4	Moderate	1	Low	0.10	Moderate	0.42	Moderate	3	Moderate
	Marina	B13-8116	45.5	Low	0	Reference	0.22	Low	0.79	Low	2	Low
	Marina	B13-8117	44.3	Low	1	Low	0.07	High	0.23	High	3	Moderate
	Deep	B13-8118	40.1	Low	1	Low	0.36	Reference	0.51	Moderate	2	Low
	Marina	B13-8121	52.8	Moderate	1	Low	0.17	Low	0.72	Moderate	3	Moderate
	Deep	B13-8122	34.1	Reference	0	Reference	0.85	Reference	0.88	Low	1	Reference
	Shallow	B13-8123	38.0	Reference	0	Reference	1.05	Reference	1.1	Reference	1	Reference
	Shallow	B13-8124	37.0	Reference	1	Low	0.57	Reference	0.83	Low	2	Low
	Marina	B13-8127	48.3	Low	1	Low	0.10	Moderate	0.44	Moderate	3	Moderate
	Shallow	B13-8128	56.6	Moderate	1	Low	0.11	Moderate	0.43	Moderate	3	Moderate
	Freshwater	B13-8500	43.1	Low	0	Reference	0.41	Reference	0.88	Low	2	Low
	San Diego Bay - Central	Deep	B13-8045	38.4	Reference	1	Low	0.30	Reference	0.54	Moderate	2
Industrial/Port		B13-8049	41.8	Low	0	Reference	0.28	Reference	0.65	Moderate	2	Low
Industrial/Port		B13-8050	42.7	Low	0	Reference	0.13	Moderate	0.70	Moderate	3	Moderate
Shallow		B13-8052	48.6	Low	1	Low	0.35	Reference	0.75	Low	2	Low
Industrial/Port		B13-8053	38.3	Reference	0	Reference	0.60	Reference	0.94	Reference	1	Reference
Industrial/Port		B13-8056	45.6	Low	1	Low	0.14	Moderate	0.67	Moderate	3	Moderate
Shallow		B13-8058	42.0	Low	1	Low	0.34	Reference	0.55	Moderate	2	Low
Shallow		B13-8060	41.0	Low	1	Low	0.34	Reference	0.51	Moderate	2	Low
Industrial/Port		B13-8064	54.4	Moderate	3	High	0	High	0.15	High	4	High
Industrial/Port		B13-8065	44.7	Low	1	Low	0.19	Low	0.75	Low	2	Low
Industrial/Port		B13-8066	48.3	Low	1	Low	0.11	Moderate	0.65	Moderate	3	Moderate
Shallow		B13-8068	41.5	Low	0	Reference	0.48	Reference	0.85	Low	2	Low
Industrial/Port		B13-8069	48.3	Low	0	Reference	0.08	High	0.55	Moderate	3	Moderate
Marina		B13-8073	43.6	Low	2	Moderate	0.11	Moderate	0.66	Moderate	3	Moderate
Freshwater		B13-8074	51.7	Moderate	1	Low	0.09	Moderate	0.71	Moderate	3	Moderate
Freshwater		B13-8075	53.1	Moderate	1	Low	0.11	Moderate	0.56	Moderate	3	Moderate
Freshwater		B13-8076	46.3	Low	0	Reference	0.14	Moderate	0.76	Low	2	Low
Freshwater		B13-8077	50.7	Moderate	0	Reference	0.11	Moderate	0.80	Low	3	Moderate
Deep		B13-8078	39.1	Reference	0	Reference	0.59	Reference	0.77	Low	1	Reference
Deep		B13-8087	34.8	Reference	0	Reference	0.39	Reference	0.87	Low	1	Reference
Industrial/Port	B13-8090	51.9	Moderate	1	Low	0.09	Moderate	0.55	Moderate	3	Moderate	
Deep	B13-8093	29.3	Reference	0	Reference	0.70	Reference	0.80	Low	1	Reference	
Industrial/Port	B13-8095	38.1	Reference	1	Low	0.09	Moderate	0.35	Moderate	3	Moderate	
Industrial/Port	B13-8096	31.7	Reference	0	Reference	0.58	Reference	0.85	Low	1	Reference	
Industrial/Port	B13-8098	30.4	Reference	0	Reference	0.72	Reference	0.82	Low	1	Reference	
Industrial/Port	B13-8099	35.5	Reference	0	Reference	0.36	Reference	0.81	Low	1	Reference	
Industrial/Port	B13-8100	45.6	Low	1	Low	0.36	Reference	0.71	Moderate	2	Low	
San Diego Bay - South	Marina	B13-8013	65.1	Moderate	1	Low	0.06	High	0.32	High	4	High
	Marina	B13-8014	47.2	Low	1	Low	0.07	High	0.64	Moderate	3	Moderate
	Shallow	B13-8017	41.1	Low	1	Low	0.13	Moderate	0.62	Moderate	3	Moderate
	Shallow	B13-8018	54.1	Moderate	0	Reference	0.05	High	0.05	High	4	High
	Shallow	B13-8020	48.5	Low	1	Low	0.14	Moderate	0.84	Low	2	Low
	Freshwater	B13-8028	43.8	Low	1	Low	0.29	Reference	0.60	Moderate	2	Low
	Freshwater	B13-8029	42.1	Low	1	Low	0.54	Reference	0.75	Low	2	Low
	Freshwater	B13-8030	49.0	Low	1	Low	0.05	High	0.40	Moderate	3	Moderate
	Freshwater	B13-8031	42.8	Low	0	Reference	0.35	Reference	0.85	Low	2	Low
	Freshwater	B13-8033	42.6	Low	0	Reference	0.15	Moderate	0.62	Moderate	3	Moderate
	Freshwater	B13-8036	42.5	Low	1	Low	0.09	Moderate	0.50	Moderate	3	Moderate
	Freshwater	B13-8038	41.9	Low	1	Low	0.11	Moderate	0.60	Moderate	3	Moderate
	Freshwater	B13-8040	41.9	Low	1	Low	0.20	Low	0.86	Reference	2	Low

BRI = Benthic Response Index; IBI = Index of Biotic Integrity; RBI = Relative Benthic Index; RIVPACS = Riverine Invertebrate Prediction and Classification System; LOE = Lines of Evidence.

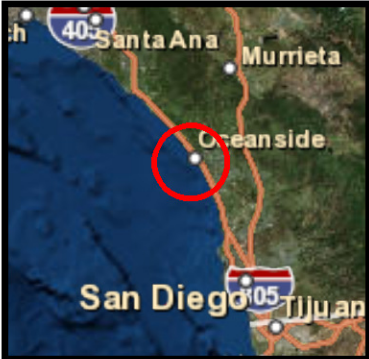
Benthic Infaunal SQO Summary Maps



SQO Benthic Community Assessment

Benthic Response Index (BRI)	RIVPACS	Disturbance Category ● High ● Moderate ● Low ● Reference
Index of Biotic Integrity (IBI)	Relative Benthic Index (RBI)	
Integrated Benthic Assessment Score		

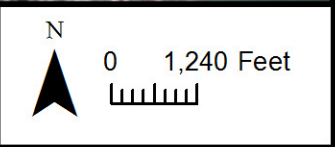
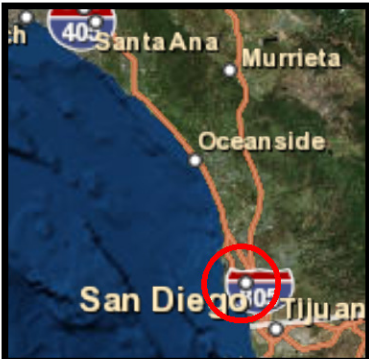
**SQO Benthic Community Assessment Scores
Dana Point Harbor
RHMP 2013**



**SQO Benthic Community Assessment Scores
Oceanside Harbor
RHMP 2013**



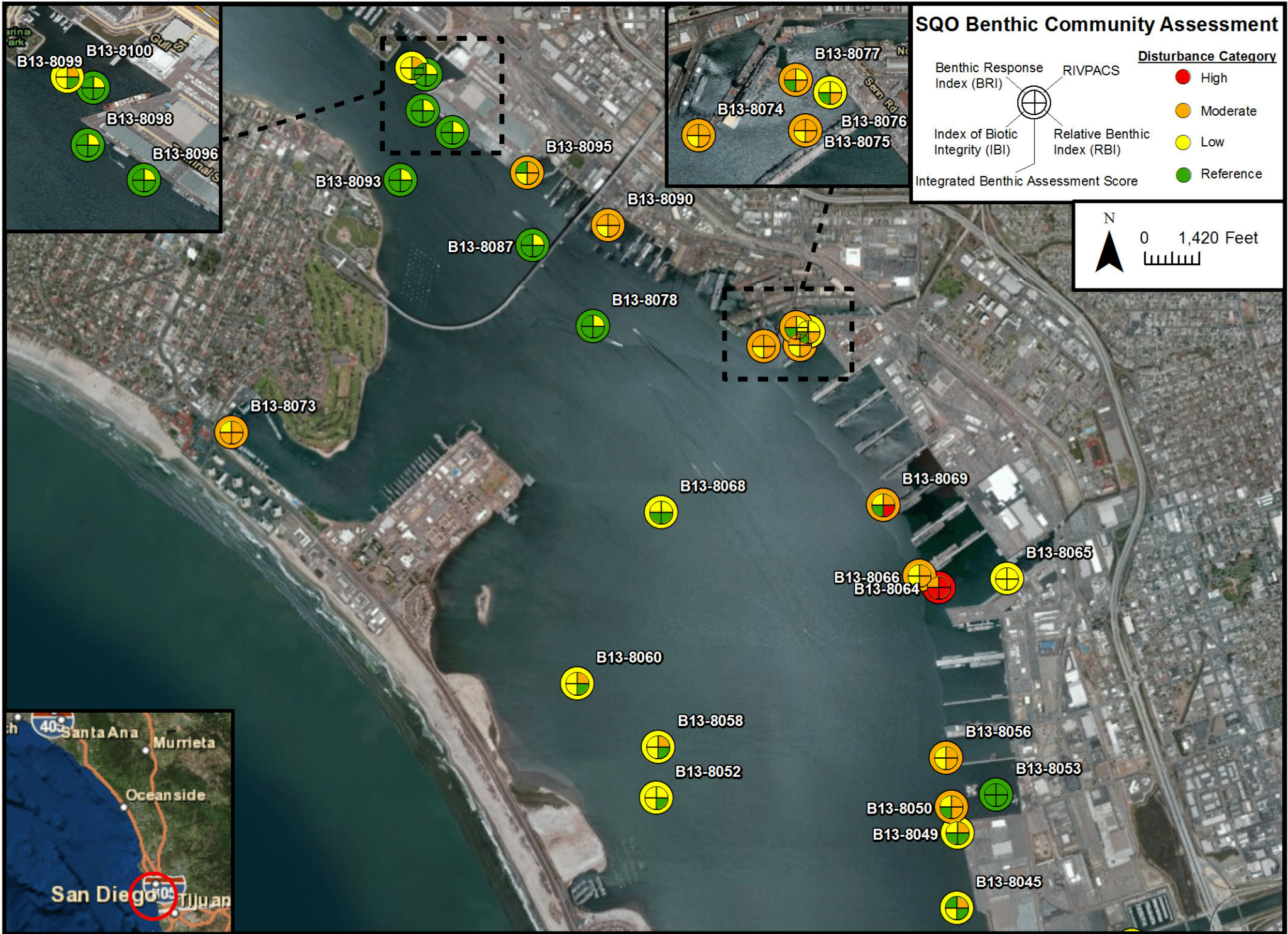
**SQO Benthic Community Assessment Scores
Mission Bay
RHMP 2013**



SQO Benthic Community Assessment

Benthic Response Index (BRI)	RIVPACS	Disturbance Category ● High ● Moderate ● Low ● Reference
Index of Biotic Integrity (IBI)	Relative Benthic Index (RBI)	
Integrated Benthic Assessment Score		

**SQO Benthic Community Assessment Scores
North San Diego Bay
RHMP 2013**



**SQO Benthic Community Assessment Scores
Central San Diego Bay
RHMP 2013**



**SQO Benthic Community Assessment Scores
South San Diego Bay
RHMP 2013**