

Let's be pals again: major systematic changes in Palaemonidae (Crustacea: Decapoda)

Sammy De Grave¹, Charles H.J.M. Fransen² and Timothy J. Page^{3,4}

¹ Oxford University Museum of Natural History, Oxford University, Oxford, United Kingdom

² Department of Marine Zoology, Naturalis Biodiversity Center, Leiden, The Netherlands

³ Australian Rivers Institute, Griffith University, Nathan, QLD, Australia

⁴ Water Planning Ecology, Queensland Department of Science, Information Technology and Innovation, Dutton Park, QLD, Australia

ABSTRACT

In recent years the systematic position of genera in the shrimp families Gnathophyllidae and Hymenoceridae has been under debate, with phylogenetic studies suggesting the families are not real family level units. Here, we review the molecular evidence as well as the morphological characters used to distinguish both families, leading to the conclusion that neither family is valid. Further, we studied the structural details of the single morphological character which distinguishes the two subfamilies (Palaemoninae, Pontoniinae) in Palaemonidae, as well as their phylogenetic relationship. As the supposed character distinction plainly does not hold true and supported by the phylogenetic results, the recognition of subfamilies in Palaemonidae is not warranted. As a consequence, all three supra-generic taxa (Gnathophyllidae, Hymenoceridae, Pontoniinae) are thus herein formally synonymised with Palaemonidae.

Subjects Biodiversity, Marine Biology, Taxonomy, Zoology

Keywords Molecular phylogenetics, Telson, Systematics, Synonymy, Pontoniinae, Gnathophyllidae, Hymenoceridae

Submitted 26 June 2015

Accepted 18 July 2015

Published 13 August 2015

Corresponding author

Sammy De Grave,
sammy.degrave@oum.ox.ac.uk

Academic editor

Alex Ford

Additional Information and
Declarations can be found on
page 17

DOI 10.7717/peerj.1167

© Copyright

2015 De Grave et al.

Distributed under

Creative Commons CC-BY 4.0

OPEN ACCESS

INTRODUCTION

In recent years, the higher level of systematics of caridean shrimps has seen considerable changes at subfamily, family and superfamily level, but not without controversy. To take but one example, *Bracken, De Grave & Felder (2009)* suggested that the family Oplophoridae could be polyphyletic, however this study only included 4 genera (out of 10). This was followed by *Chan et al. (2010)* who, on the basis of a molecular phylogeny of 10 species from 9 genera, split the family into two families, Oplophoridae and Acanthephyridae, underpinned by habitat and morphological differences between the two families. However, *Wong et al. (2015)* in a more comprehensive study of 30 species in 9 genera, consider the family to be monophyletic, yet comprising two distinct clades, which correspond to the above separate families. Finally, *Aznar-Cormano et al. (2015)* in a wide-ranging analysis with coverage across all caridean families, recovered both families as distinct lineages with high support, but with poorly resolved relationships between them.

Despite such problems, currently 39 families of caridean shrimps are recognised (*De Grave & Fransen, 2011; Baeza et al., 2014; De Grave et al., 2014*). Seven of these families used

to be placed in the superfamily Palaemonoidea Rafinesque, 1815 (see [De Grave & Fransen, 2011](#)), namely Anchistioididae Borradaile, 1915; Desmocarididae Borradaile, 1915; Euryrhynchidae Holthuis, 1950; Gnathophyllidae Dana, 1852; Hymenoceridae Ortmann, 1890; Palaemonidae Rafinesque, 1815 and Typhlocarididae Annandale & Kemp, 1913. In previous classifications (e.g., [De Grave et al., 2009](#); [De Grave & Fransen, 2011](#)) a further family was recognised, Kakaducarididae [Bruce, 1993](#). Following the phylogenetic analysis in [Page et al. \(2008\)](#), [Short, Humphrey & Page \(2013\)](#) in a morphological reappraisal relegated this family to the synonymy of Palaemonidae. Although Palaemonoidea at superfamily level appears to indeed form a monophyletic group ([Li et al., 2011](#)), superfamilies are not often formally used any more in caridean systematics, and we herein refer to this assemblage of families as the palaemonoid clade. Traditionally, Palaemonidae has been thought to comprise two subfamilies, Palaemoninae Rafinesque, 1815 (primarily freshwater and temperate coastal species) and Pontoniinae [Kingsley, 1879](#) (primarily tropical species, most abundant on coral reefs), although the morphological dividing line between both can be rather arbitrary ([Bruce, 1995](#)).

In common with several other taxa, the systematic composition of the palaemonoid clade has been somewhat mired in controversy in recent decades. It was not until [Chace \(1992\)](#) that Hymenoceridae were recognised as separate from Gnathophyllidae. In contrast, Typhlocarididae was comprised of two subfamilies in his classification, Typhlocaridinae and Euryrhynchinae, therein followed by the major compilations of [Chace & Bruce \(1993\)](#) and [Holthuis \(1993\)](#). [Bruce \(1993\)](#) expressed the opinion that both these taxa are not closely related and should be treated as independent families, a view corroborated by the morphological discussion in [De Grave \(2007\)](#).

[Mitsuhashi et al. \(2007\)](#) were the first to demonstrate that Gnathophyllidae, Hymenoceridae and Pontoniinae form a paraphyletic clade in their 18S/28S analysis of a limited dataset (only including 17 species from four families) and pointed out the congruence of larval morphology to this result. [Kou et al. \(2013a\)](#) expanded on this dataset (16S/18S/28S), with 44 species (7 families), but with heavy bias towards Palaemoninae (only 2 Pontoniinae were included). Despite this unbalanced sampling scheme, their results demonstrate Palaemoninae to be polyphyletic and the same paraphyletic assemblage of Gnathophyllidae, Hymenoceridae and Pontoniinae. Recently, [Gan et al. \(2015\)](#) provided yet one more variant, based on a combined analysis of 16S/H3/Nak/Enolase, with a heavy inclusion of Pontoniinae over Palaemoninae (as well as Gnathophyllidae, Hymenoceridae, Anchistioididae), but exclusive of the Atlantic families, Desmocarididae, Euryrhynchidae and Typhlocarididae. Nevertheless, their analysis once again recovers Gnathophyllidae and Hymenoceridae inside Pontoniinae. Despite this wealth of data, analyses to date have not included the full breadth of available molecular diversity within the palaemonoid clade as a whole, thus any systematic conclusions are at best partial, and at worst misleading. This has, in part, been due to the fact that different loci have often been sequenced for the different taxa, making a comparison between them impossible. We have trawled through available molecular data to assemble datasets that represent the lion's share of the currently available molecular

diversity within each of the nine suprageneric palaemonoid taxa (7 families, 2 subfamilies) so as to assess the relationships amongst them with fullest possible data.

The systematic distinction of the two subfamilies within Palaemonidae, i.e., Palaemoninae and Pontoniinae, has received scant scrutiny and has been generally followed without query. To date, no phylogenetic study has included sufficient taxa from both to allow a discussion of the validity of either subfamily. Morphologically, they are distinguished on a single character, of somewhat dubious validity. *Kingsley (1879)* distinguished both taxa on the basis of the presence/absence of a mandibular palp (therein followed by *Spence Bate, 1888*, a clearly variable character within each subfamily (see *Chace & Bruce, 1993*; *De Grave & Ashelby, 2013*). *Sollaud (1910)* distinguished both taxa on the basis of the presence/absence of a pleurobranch on the third thoracic somite, to which *Balss (1957)* added the ornamentation of the posterior telson. *Abele & Felgenhauer (1986)*, as well as *Bruce (1995)* showed the absence of a pleurobranch on the third maxilliped in selected species of *Macrobrachium*. Further, *Bruce (2002)* demonstrated variability in the size of the arthrobranch, which is reduced in *Leander manningi*. We therefore concur with *Bruce (1995)* that it is likely that both Palaemoninae and Pontoniinae have five pairs of pleurobranches, leaving only the telson distinction. *Holthuis (1993)* defined the latter as follows: telson with two pairs of posterior “spines” and with one or more pairs of hairs (i.e., plumose setae)—Palaemoninae, versus telson usually with three pairs of posterior “spines”—Pontoniinae. However, *Bruce (1995)* drew attention to the fact that in many Pontoniinae, the submedian “spines” are often also plumose. In the present contribution, we provide a detailed morphological examination of these setae, in combination with molecular analyses to investigate the relationships of the two subfamilies.

MATERIAL AND METHODS

Dataset construction for molecular analysis

Genbank (www.ncbi.nlm.nih.gov) was searched for sequences of palaemonoid taxa on 24 November, 2014. We were looking for genetic markers for which there were data from all seven palaemonoid families (Anchistoididae, Desmocarididae, Euryrhyndidae, Gnathophyllidae, Hymenoceridae, Palaemonidae, Typhlocarididae) and for which there was also good coverage of genera of the two subfamilies within Palaemonidae (Palaemoninae, Pontoniinae). In particular, we strove to include the various clades and divergent taxa within each subfamily as identified in previous restricted subfamily studies (*Ashelby et al., 2012*; *Kou et al., 2013b*; *Gan et al., 2015*). We only included species for which there were at least two different independent markers. It quickly became apparent that some loci were available only for one subfamily (e.g., Pontoniinae—Enolase, NaK, Pepck), and so were not informative across all taxa. The four markers that had the best coverage across all taxa were the mitochondrial 5' cytochrome *c* oxidase I (COI), mitochondrial 16S ribosomal DNA (16S), nuclear Histone 3 (H3) and nuclear 18S ribosomal DNA (18S). Preliminary analyses of COI data quickly established that although it was effective at grouping very closely related species, it was highly ineffective at inferring deeper systematic relationships, which is unsurprising given its relatively rapid rate of molecular divergence.

Thus, we settled on 16S, H3 and 18S for our analyses, as this combination of markers with differing levels of divergence may pull out any strong systematic relationships.

Relevant data from GenBank, and an additional three new H3 sequences of our own (*Gnathophylloides mineri*, *Manipontonia psamathe*, *Pontonia manningi*) were combined (Table 1), with the alpheid *Betaeus longidactylus* as an outgroup. Sequences of the three markers were imported into Mega 6 (Tamura et al., 2013) and each aligned separately using Muscle (Edgar, 2004) within Mega. The most appropriate substitution model (lowest Bayesian Information Criterion score) was chosen with Mega. Four separate datasets were created; 16S (424 base pairs [bp], 45 species); H3 (327 bp, 42 species); 18S (1559 bp, 23 species), combined 16S/H3/18S (2310 bp, 45 species), with any unavailable data coded as missing (Table 1).

Molecular analyses

The single marker datasets were analysed using Bayesian analyses in MrBayes 3.2 (Ronquist et al., 2012) and Maximum Likelihood in Mega (bootstrapped 1000 times), both using the relevant molecular model for each marker. The Bayesian analyses were done using the following parameters: 5 million generations, trees sampled every 1000 cycles, 25% burn in, two runs of four chains heated to 0.2. The combined dataset was analysed using Bayesian analyses as above.

Formal phylogenetic support for various systematic schemes was assessed by constraining the topology of the Bayesian analyses in the relevant way and then rerunning MrBayes for each dataset. Constrained versus unconstrained harmonic means of log likelihood values were then compared with Bayes Factors (Kass & Raftery, 1995). Seven different topological constraints were tested (the last 5 only on the combined dataset), with no constraints placed on topologies within each defined clade unless specified:

(A) species of Palaemoninae form a clade, and species of Pontoniinae form a separate clade; (B) species of Palaemoninae form one clade, and species of Gnathophyllidae/Hymenoceridae/Pontoniinae form a separate single clade; (C) species of Palaemonidae/Gnathophyllidae/Hymenoceridae form a clade; (D) Palaemonidae form a clade, and within it both Palaemoninae and Pontoniinae are reciprocally monophyletic (effectively the current state of play); (E) Palaemonidae form a clade, and within it Palaemoninae forms a clade sister to a clade of Pontoniinae/Gnathophyllidae/Hymenoceridae; (F) species of Anichistoididae/Palaemonidae/Gnathophyllidae/Hymenoceridae form one clade; (G) species of Desmocarididae/Euryrhynchidae/Palaemonidae/Gnathophyllidae/Hymenoceridae form a clade.

Morphological study

Twelve species (Table 2) were selected randomly from Palaemoninae (4 species) and Pontoniinae (8 species) to investigate the posterior ornamentation of the telson, which currently is the only morphological character which distinguishes both subfamilies. Tissue preparation for Scanning Electron Microscopy (SEM) follows De Grave & Wood (2011), whereby tissue is hydrated to distilled water via a series of graded ethanol solutions, briefly sonicated using a light surfactant and dehydrated in graded ethanol to 100%. Drying was

Table 1 Details of sequences used in this study.

	Genbank accession numbers		
	16S	H3	18S
Anchistioideidae			
<i>Anchistioides antiguensis</i> (Schmitt, 1924)	EU920911	EU921043	EU920936
<i>Anchistioides willeyi</i> (Borradaile, 1900)	KC515030	KC515074	–
Desmocarididae			
<i>Desmocarid</i> sp.	EU868651	–	EU868742
Euryrhyndidae			
<i>Euryrhyndus wrzesniowskii</i> Miers, 1877	EU868654	–	EU868745
Gnathophyllidae			
<i>Gnathophylloides mineri</i> Schmitt, 1933	EU868659	KT224392	EU868750
<i>Gnathophyllum americanum</i> Guérin–Meneville, 1855	EU868660	JF346317	EU868751
Hymenocerae			
<i>Hymenocera picta</i> Dana, 1852	EU868663	JF346328	EU868754
<i>Phyllognathia ceratophthalma</i> (Balss, 1913)	KC515032	KC515076	DQ642847
Palaemonidae–Palaemoninae			
<i>Arachnochium mirabilis</i> (Kemp, 1917)	KC515033	KC515077	KC515052
<i>Brachycarpus biunguiculatus</i> (Lucas, 1846)	EU868684	JN674391	EU868779
<i>Creaseria morleyi</i> (Creaser, 1936)	EU868688	DQ079671	DQ079746
<i>Cryphiops caementarius</i> (Molina, 1782)	DQ079711	DQ079672	DQ079747
<i>Leander tenuicornis</i> (Say, 1818)	EU868690	JN674388	EU868783
<i>Leandrites deschampsi</i> (Nobili, 1903)	KC515039	KC515081	–
<i>Leptocarpus potamiscus</i> (Kemp, 1917)	JN674328	JN674392	–
<i>Macrobrachium rosenbergii</i> (De Man, 1879)	FM986637	FM958123	DQ642856
<i>Nematopalaemon tenuipes</i> (Henderson, 1893)	KC515042	JN674382	–
<i>Palaemon concinnus</i> Dana, 1852	KC515043	KC515085	KC515056
<i>Palaemon elegans</i> Rathke, 1837	EU868696	DQ079696	DQ079764
<i>Palaemon pandaliformis</i> (Stimpson, 1871)	JN674341	JN674364	–
<i>Urocaridella pulchella</i> Yokes & Galil, 2006	KC515050	KC515092	KC515062
Palaemonidae–Pontoniinae			
<i>Anchiopontonia hurii</i> (Holthuis, 1961)	KF738358	KF738309	–
<i>Anchistus custos</i> (Forskål, 1775)	KF738360	KF738311	–
<i>Conchodytes meleagrinae</i> Peters, 1852	KC515051	KC515093	EF540837
<i>Coralliocaris graminea</i> (Dana, 1852)	KF738361	KF738313	AM083319
<i>Cuapetes andamanensis</i> (Kemp, 1922)	JX025214	KF738315	–
<i>Cuapetes elegans</i> (Paulson, 1875)	JX025213	KF738316	–
<i>Dactylonia ascidicola</i> (Borradaile, 1898)	KF738363	KF738317	–
<i>Harpiliopsis spinigera</i> (Ortmann, 1890)	JX025206	KF738319	–
<i>Harpilius lutescens</i> Dana, 1852	JX025205	KF738320	–
<i>Ischnopontonia lophos</i> (Barnard, 1962)	KF738364	KF738321	–
<i>Laomenes nudirostris</i> (Bruce, 1968)	KF738366	KF738323	–
<i>Manipontonia psamathe</i> (De Man, 1902)	JX025199	KT224393	–
<i>Palaemonella spinulata</i> Yokoya, 1936	KF738367	KF738325	–

(continued on next page)

Table 1 (continued)

	Genbank accession numbers		
	16S	H3	18S
<i>Periclimenaeus bidentatus</i> Bruce, 1970	KF738368	KF738326	–
<i>Periclimenes brevicarpalis</i> (Schenkel, 1902)	JX025191	JF346324	JF346254
<i>Periclimenes calcaratus</i> Chace & Bruce, 1993	KF738370	KF738329	–
<i>Philarius gerlachei</i> (Nobili, 1905)	JX025177	KF738333	–
<i>Platycaris latirostris</i> Holthuis, 1952	KF738371	KF738335	–
<i>Pliopontonia furtiva</i> Bruce, 1973	KF738372	KF738336	–
<i>Pontonia manningi</i> Fransen, 2000	EU868705	KT224394	EU868800
<i>Thaumastocaris streptopus</i> Kemp, 1922	KF738373	KF738337	DQ642852
<i>Zenopontonia soror</i> (Nobili, 1904)	JX025178	KF738332	–
Typhlocarididae			
<i>Typhlocaris salentina</i> Caroli, 1923	EU868713	–	EU868808
Alpheidae			
<i>Betaeus longidactylus</i> Lockington, 1877	JX010752	JX010771	JF346263

Table 2 Species examined by SEM for morphology of telson setation (all material is accessioned in the Oxford University Museum of Natural History-OUMNH.ZC).

	Origin	Accession number
Palaemonidae–Palaemoninae		
<i>Leander tenuicornis</i> (Say, 1818)	USA	OUMNH.ZC.2006-11-007
<i>Macrobrachium amazonicum</i> (Heller, 1862)	Brazil	OUMNH.ZC.2002-27-003
<i>Palaemon adspersus</i> Rathke, 1837	Greece	OUMNH.ZC.2003-03-001
<i>Palaemon modestus</i> (Heller, 1862)	Kazakhstan	OUMNH.ZC.2012-01-068
Palaemonidae–Pontoniinae		
<i>Conchodytes nipponensis</i> (De Haan, 1844)	Japan	OUMNH.ZC.2011-11-001
<i>Cuapetes americanus</i> (Kingsley, 1878)	Panama	OUMNH.ZC.2003-33-050
<i>Jocaste lucina</i> (Nobili, 1901)	Chagos	OUMNH.ZC.2014-09-038
<i>Palaemonella rotumana</i> (Borradaile, 1898)	Singapore	OUMNH.ZC.2011-02-003
<i>Periclimenaeus caraibicus</i> Holthuis, 1951	Panama	OUMNH.ZC.2008-14-065
<i>Periclimenes brevicarpalis</i> (Schenkel, 1902)	Taiwan	OUMNH.ZC.2010-02-003
<i>Stegopontonia commensalis</i> Nobili, 1906	Taiwan	OUMNH.ZC.2010-02-039
<i>Thaumastocaris streptopus</i> Kemp, 1922	Israel	OUMNH.ZC.2011-05-024

achieved using the HMDS method, and specimens coated with a gold-palladium mixture using an E5000 sputter coater. Mounted specimens were observed and photographed using a JEOL JSM-5510 microscope; images were not post processed with image software. SEM observations were complemented by light microscopy of a much wider range of species to verify the results. Setal terminology in general follows [Garm \(2004\)](#), although we consider the term cuspidate to also include more elongated forms of setae termed “intermediate form between cuspidate and simple” in [Garm \(2004\)](#) to facilitate discussion.

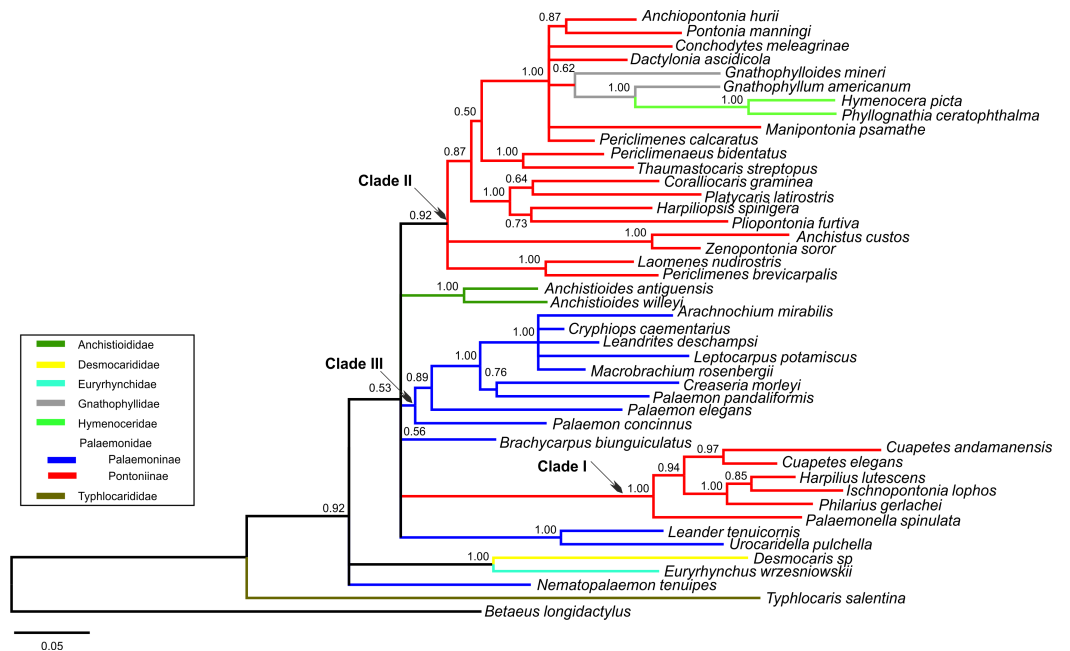


Figure 1 Bayesian majority rule consensus topology for combined dataset (16S/H3/18S) of the palaemonoid clade. No constraints, only clades with >0.50 posterior probability are shown, Tree Score = -16540.11. For definitions of palaemonid clades, see text.

RESULTS

Molecular results

Bayesian (BA) trees were produced for the combined dataset (Fig. 1, Figs. S1 and S2), as well as Bayesian and Maximum Likelihood (ML) trees for each single locus dataset (Figs. S3–S8). Majority rule consensus trees are displayed for Bayesian trees (i.e., clades >0.50 posterior probability). BA and ML analyses inferred similar clades at shallower levels for the single marker datasets, with ML support values generally lower. Our analyses are primarily based on the combined dataset, with the single locus analyses provided for reference.

Typhlocarididae

Typhlocarididae was represented by two of the three markers (16S, 18S). Its sole genus was recovered strongly as sister to all other palaemonoids (Fig. 1). Both its 16S and 18S sequences were highly differentiated from the rest of the sampled Palaemonoidea.

Anchistioidea

The two species from the sole anchistiooidid genus (*Anchistioidea*) formed a strong clade in all analyses. Its relationship with the other families (excluding Typhlocarididae) is not immediately apparent. It did not form strong clades with the other families in most analyses, except in both 18S analyses where it groups with Palaemonidae, Gnathophyllidae and Hymenoceridae to the exclusion of Desmocarididae and Euryrhynchidae. However when *Anchistioidea* was constrained to form a clade with Palaemonidae/Gnathophyllidae/Hymenoceridae in a combined analysis (Constraint F), its

Table 3 Datasets, molecular models and tree scores for analyses conducted in this study.

Dataset	Molecular model	N	Figure	Tree Scores	Difference versus unconstrained	BF strength of evidence of difference
16S/H3/18S (Combined)		45				
Unconstrained BA			1	-16540.11		
Constraint A				-16617.59	77.48	Very strong against
Constraint B			S1	-16546.48	6.37	Very strong against
Constraint C			S2	-16540.26	0.15	Equivocal
Constraint D				-16616.49	76.38	Very strong against
Constraint E				-16544.29	4.18	Strong
Constraint F				-16547.56	7.45	Very strong against
Constraint G				-16545.17	5.06	Very strong against
16S rDNA (16S)		45				
Unconstrained ML	TN93+G+I		S3	-7434.59		
Unconstrained BA			S4	-8098.11		
Constraint A				-8133.18	35.07	Very strong against
Constraint B				-8120.15	22.04	Very strong against
Histone 3 (H3)		42				
Unconstrained ML	K2+G+I		S5	-3329.51		
Unconstrained BA			S6	-3364.55		
Constraint A				-3386.06	21.51	Very strong against
Constraint B				-3371.81	7.26	Very strong against
18S rDNA (18S)		23				
Unconstrained ML	K2+G+I		S7	-4812.79		
Unconstrained BA			S8	-4859.85		
Constraint A				-4907.84	47.99	Very strong against
Constraint B				-4872.23	12.38	Very strong against

Notes.

BA, Bayesian analysis; BF, Bayes Factor; G, Gamma Rate Distribution; I, Invariant sites; K2, Kimura 2-parameter; ML, Maximum Likelihood; TN93, Tamara-Nei model.

score was slightly worse than when Desmocarididae and Euryrhyndidae were constrained to form a clade with Palaemonidae/Gnathophyllidae/Hymenoceridae (Constraint G) (Table 3), so its precise relationship with the other families is unclear.

Desmocarididae and Euryrhyndidae

Desmocarididae and Euryrhyndidae were represented by two of the three markers (16S, 18S). They formed a strong clade with each other (Fig. 1), in particular due to their 18S data, but their relationship to the other families (except Typhlocarididae) is unclear in the same way as Anchistioididae above. They may be sister to Anchistioididae/Palaemonidae/Gnathophyllidae/Hymenoceridae (Fig. S2), however the tree score when they are forced to form a clade with Palaemonidae/Gnathophyllidae/Hymenoceridae to the exclusion of Anchistioididae (Constraint G) is marginally better than when Anchistioididae is constrained to Palaemonidae/Gnathophyllidae/Hymenoceridae (Constraint F) (Table 3), however the difference is not great, and neither constraint produces a particularly bad score relative to the unconstrained analysis. Therefore the relationship of the clade formed by Desmocarididae/Euryrhyndidae is unclear

relative to Anchistioididae/Palaemonidae/Gnathophyllidae/Hymenoceridae. However, when constraints are applied to other taxa (Constraints B, C), Anchistioididae forms a strong clade with palaemonid taxa to the exclusion of Desmocarididae/Euryrhynchidae (Figs. S1 and S2), so it is possible that Desmocarididae/Euryrhynchidae is sister to Anchistioididae/Palaemonidae/Gnathophyllidae/Hymenoceridae, but more data is required to explore this further.

Palaemonidae

As currently defined a pure Palaemonidae is not supported as a distinct separate unit (Constraint D) since Gnathophyllidae and Hymenoceridae clearly nest within, making Palaemonidae paraphyletic at best (Fig. 1). However when one includes Gnathophyllidae and Hymenoceridae within Palaemonidae and does not enforce monophyly of the subfamilies, then there is little difference compared to completely unconstrained analyses (Constraint C). Even when Palaemoninae and Pontoniinae/Gnathophyllidae/Hymenoceridae are constrained to be sisters within a monophyletic Palaemonidae, the resulting tree score is not really too much worse (Constraint E, Table 3). This implies that the “problem” is with the internal structure of Palaemonidae rather than in its relationship to others, and that it may well be a monophyletic unit. However as stated above, it is also unclear how Desmocarididae/Euryrhynchidae, and particularly Anchistioididae, relate to Palaemonidae. Plainly Palaemonidae contains Gnathophyllidae and Hymenoceridae. However, it is not yet clear phylogenetically whether Palaemonidae is truly monophyletic relative to Anchistioididae and/or Desmocarididae/Euryrhynchidae, within Palaemonoidea.

Palaemoninae and Pontoniinae

I Palaemoninae and Pontoniinae do not form clear monophyletic clades in any of our analyses. When they are each constrained to monophyly (Constraint A), the scores are all very much worse than when unconstrained (Table 3). When Gnathophyllidae and Hymenoceridae are considered honorary Pontoniinae (Constraint B), then the tree scores improved markedly in all analyses (Table 3) (Fig. S1), but the evidence against this topology is still very strong. When Palaemoninae and Pontoniinae are constrained to clades within a monophyletic Palaemonidae (Constraint D), which is essentially the current taxonomy, the scores are very poor and so are unlikely to reflect phylogenetic reality. However when Gnathophyllidae and Hymenoceridae are included within Pontoniinae within a monophyletic Palaemonidae (Constraint E), then scores improve greatly, although still worse than unconstrained. The one constraint that approaches the unconstrained scores is when all species of Palaemoninae, Pontoniinae, Gnathophyllidae and Hymenoceridae are thrown together into a single clade but without any intraclade constraints (Constraint C) (Fig. S2).

Instead of a clear delineation of reciprocally monophyletic Palaemoninae and Pontoniinae (which includes Gnathophyllidae/Hymenoceridae), what emerges are a number of larger clades that contain either species of Palaemoninae or species of Pontoniinae/Gnathophyllidae/Hymenoceridae, and a few divergent species of Palaemoninae whose relationship is unclear (Fig. 1). However these clades and species do not form larger clades that equate to the subfamilies as currently defined.

Morphology of the posterior margin of the telson in Palaemonidae

The posterior margin of the telson in the majority of Palaemoninae comprises a lateral pair of short cuspidate setae, a submedian pair of elongated, cuspidate setae and one or more pairs of median plumose setae (Figs. 2A, 2C and 2E). The plumose setae are classical in structure, with two rows of long setules, weakly articulated with the setal shaft (Figs. 2B and 2D). Although the examples shown herein (*Palaemon adspersus*, *Macrobrachium amazonicum*, *Leander tenuicornis*) only have a single pair of median plumose setae, several other taxa harbour two (e.g., *Brachycarpus biunguiculatus*) or more pairs (e.g., *Neopalaemon nahuatlus*, *Palaemon tonkinensis*). As exemplified herein by *Palaemon modestus* (Fig. 2F), deviations of this bauplan exist, with the species previously assigned to *Exopalaemon* (recently transferred to *Palaemon*), having lost the median plumose setae.

Although the extensive bauplan modification in Pontoniinae due to their extensive commensal relationships has resulted in more variation in the ornamentation of the posterior margin of the telson, many genera remain morphologically very similar in this respect to Palaemoninae. For example, the free living *Palaemonella rotumana* (Figs. 3A and 3B) and *Cuapetes americanus* (Figs. 3C and 3D) have a similar arrangement with a pair of lateral cuspidate setae, a submedian pair of elongated, cuspidate setae and a median pair of plumose setae. The median plumose setae are however more robust than their counterparts in Palaemoninae, with sparser and somewhat shorter setules. In some commensal taxa, the submedian pair of cuspidate setae is considerably shorter, as exemplified herein by the anemone associate, *Periclimenes brevicarpalis* (Fig. 3E) and the sponge associate *Periclimenaeus caraibicus* (Fig. 3F). Both, however, harbour a robust pair of median plumose setae, with somewhat shorter and sparser setules. In contrast, rather densely plumose median setae are evident in the coral dwelling *Jocaste lucina* (Figs. 4A and 4B) and the sponge associated *Thaumastocaris streptopus* (Figs. 4C and 4D), with the setules in both being as long as in Palaemoninae. In the morphologically highly modified, echinoid associated *Stegopontonia commensalis*, the median setae are very robust, but continue to display a reduced set of setules, both sparse (mainly restricted to basal part) and very short (Fig. 4E). A barely discernible set of minute setules is still present on the median setae in the equally highly modified, bivalve associate, *Conchodytes nipponensis* (Fig. 4F), which otherwise has only two pairs of extremely short and robust cuspidate setae, homologous to the median and submedian pairs in the other species.

DISCUSSION

The numerous molecular analyses presented herein agree strongly in some respects, but agree only weakly in some, and even disagree in others. Therefore it is not always possible to come to unequivocal conclusions in all cases, but our overall hypothesis of relationships, based on the current molecular analyses in the palaemonoid clade is presented in Fig. 5. Available data suggests strongly that Typhlocarididae are a sister group to the rest of Palaemonoidea. Next, there is weak evidence that a clade of Desmocarididae/Euryrhynchidae are a sister group to the remaining taxa, however this is not certain. Anchistoididae may form a clade with Palaemonidae/Gnathophyllidae/Hymenoceridae,

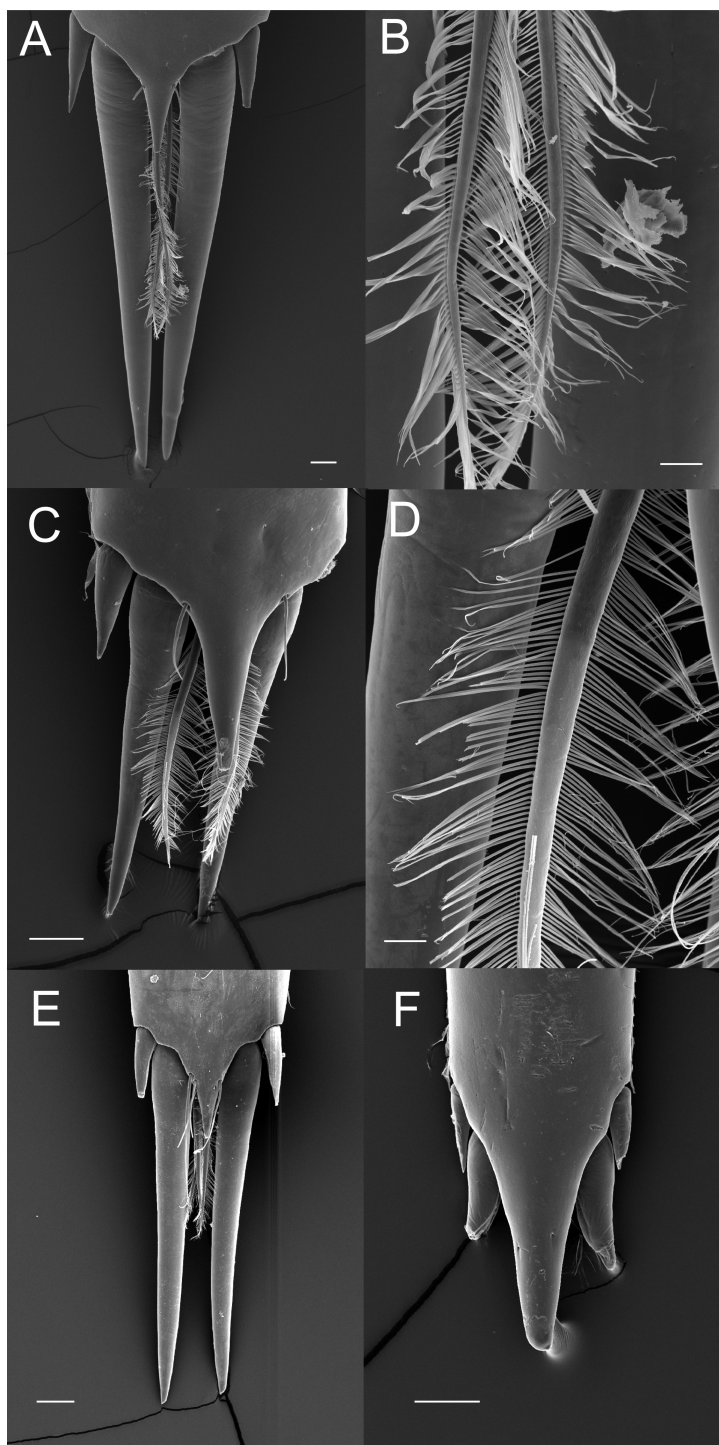


Figure 2 Ornamentation of the posterior telson margin of some Palaemoninae. (A) *Palaemon adspersus*; (B) same, detail of median setae; (C) *Macrobrachium amazonicum*; (D) same, detail of median setae; (E) *Leander tenuicornis*; (F) *Palaemon modestus*. Scale bars indicate 100 μm (A, C, D–E), 40 μm (B) or 20 μm (D).

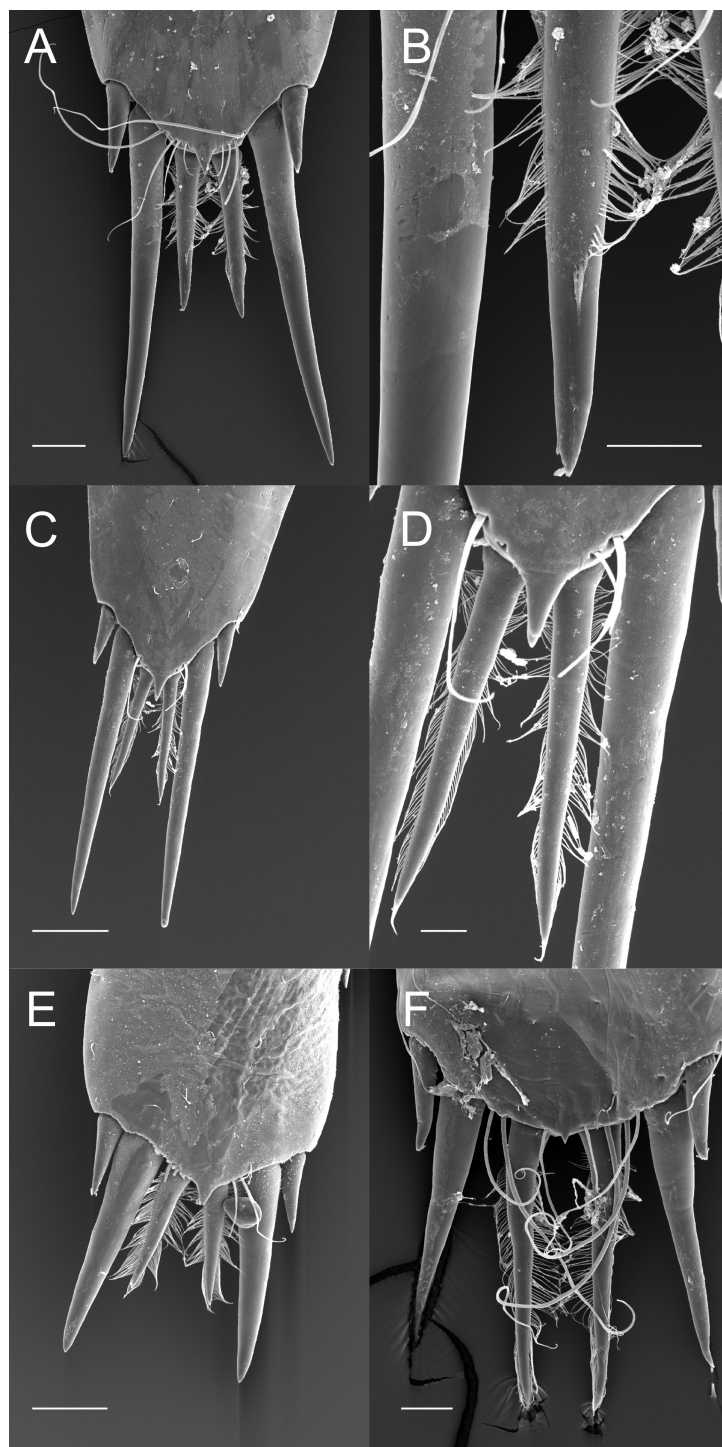


Figure 3 Ornamentation of the posterior telson margin of some Pontoniinae. (A) *Palaemonella rotumana*; (B) same, detail of median setae; (C) *Cuapetes americanus*; (D) detail of median setae; (E) *Periclimenes brevicarpalis*; (F) *Periclimenaeus caraibicus*. Scale bars indicate 100 μm (A, C, E), 50 μm (B, F) or 20 μm (D).

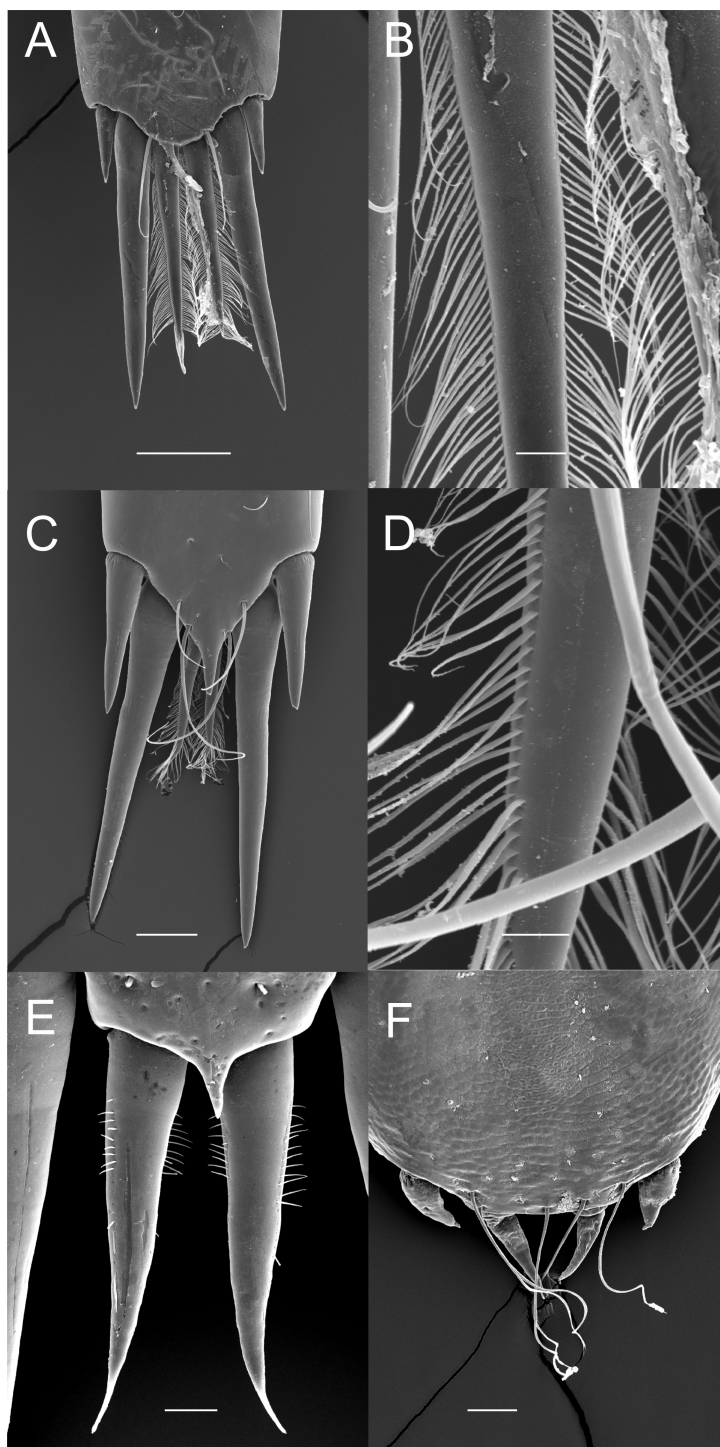


Figure 4 Ornamentation of the posterior telson margin of some Pontoniinae. (A) *Jocaste lucina*; (B) same, detail of median setae; (C) *Thaumastocaris streptopus*; (D) same, detail of median setae; (E) *Stegopontonia commensalis*; (F) *Conchodytes nipponensis*. Scale bars indicate 100 μm (A, C, F), 20 μm (E) or 10 μm (B, D).

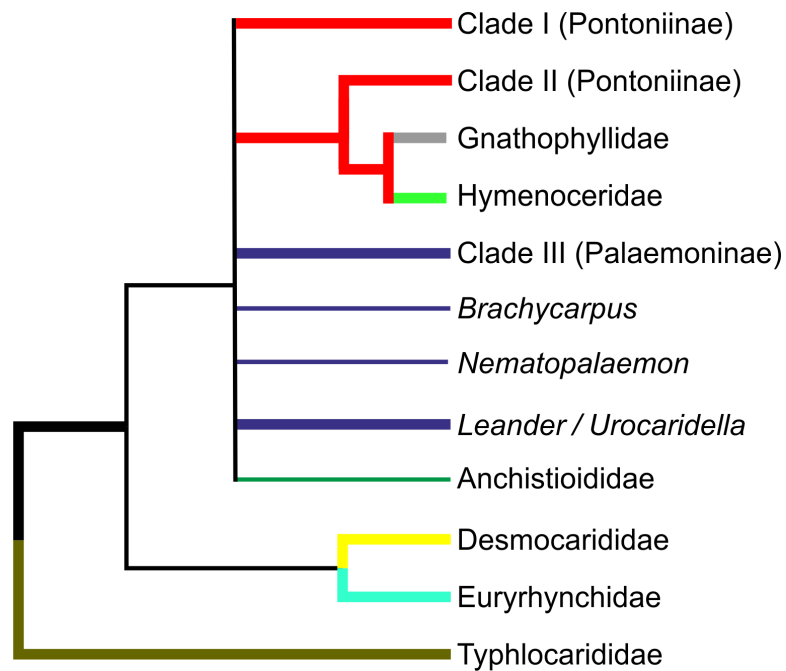


Figure 5 Cladogram of hypothesised relationships of palaemonoid taxa derived from all molecular analyses. Thicker lines denote where evidence is stronger.

either as sister or within the clade itself. There is very strong evidence that Gnathophyllidae and Hymenoceridae form a clade within Palaemonidae.

There is also strong molecular evidence that Palaemoninae and Pontoniinae do not form reciprocally monophyletic clades. Even when Gnathophyllidae and Hymenoceridae are considered as part of Pontoniinae, the evidence against this is strong, however the evidence against legitimate clades of Palaemoninae and Pontoniinae/Gnathophyllidae/Hymenoceridae is reduced markedly. Because of this, and because there are few instances when some species of Palaemoninae and Pontoniinae form strong clades with each other relative to others from their respective subfamilies, it remains possible that the addition of more markers and taxa could theoretically bring together reciprocal monophyletic clades that equate to Palaemoninae and Pontoniinae/Gnathophyllidae/Hymenoceridae. This does not however seem particularly likely.

Our molecular results mirror those of [Mitsuhashi et al. \(2007\)](#), [Kou et al. \(2013a\)](#) and [Gan et al. \(2015\)](#), who each recover a paraphyletic clade comprising the family Palaemonidae and Gnathophyllidae/Hymenoceridae. As already discussed by [Mitsuhashi et al. \(2007\)](#), this relationship is underpinned by similarities in larval morphology. [Bruce \(1986\)](#) when describing the first zoea of *Gnathophyllum americanum* already remarked that they are fundamentally pontoniine in nature, and further highlighted the uniformity in larval form within Palaemonidae *sensu lato* when he described the zoea of *Hymenocera picta* (see [Bruce, 1988](#)). Recently, [Meyer et al. \(2014\)](#) also commented on the close morphological similarity between gnathophyllids, hymenocerids and pontoniines when describing the fine features under SEM of the zoea of *Gnathophyllum elegans*.

As regards the adults, *Holthuis (1955)*, *Holthuis (1993)* and *Chace (1992)* characterised both Gnathophyllidae and Hymenoceridae by the mandible with a vestigial or absent incisor process, third maxilliped being broadened, at least proximally (sometimes operculate) and the first maxilliped with the caridean lobe not distinctly overreaching the endite. The other palaemonoid families are therein jointly defined primarily by the slender third maxilliped and the mandible usually with a prominent incisor. Ample evidence exists that the vestigial or absent incisor is not a synapomorphy of these families. *Bruce (1986)* already commented that some species in the pontoniine genera *Periclimenaeus*, *Onycocharis* and *Typton* also lack an incisor, for example *Typton gnathophylloides* (see *Holthuis, 1951*, Plate 50). Conversely, some gnathophyllids, like *Pycnocaris chagoae*, harbour a rudimentary incisor (see *Bruce, 1972*, Fig. 5A). In fact, even in *Gnathophyllum elegans*, the type species of the family Gnathophyllidae, a vestigial incisor is present (see *Ashelby, De Grave & Johnson, 2015*, Fig. 5A). Although the third maxilliped is markedly operculate in *Gnathophyllum*, this is not the case for all gnathophyllid genera. The third maxilliped in *Gnathophylloides* is broadened, but not operculate (see *Bruce, 1973*, Fig. 4C), whilst only basally broadened in *Levicaris* (see *Bruce, 1973*, Fig. 8G). Conversely, some pontoniine genera equally have a much broadened third maxilliped, notably members of the genus *Conchodytes* (see *Fransen, 1994*, Figs. 35–37). The extensive bauplan modifications of the first maxilliped in pontoniine shrimps makes a comparison futile, perhaps the reason why this character distinction was not listed in the latest definition of the families by *Wicksten (2010)*. It should be noted that both *Hymenocera* and *Phyllognathia* do share a unique synapomorphy amongst palaemonoid shrimps, namely the basis of the third maxilliped being distinct from the ischiomerus, which in turn is marked by a distinct suture, delineating the ischium and merus. Both *Chace (1992)* and *Holthuis (1993)* used this character to separate the Hymenoceridae from the Gnathophyllidae. The current molecular analysis, as well as those of *Mitsuhashi et al. (2007)*, *Kou et al. (2013a)* and *Gan et al. (2015)* do demonstrate this not to be of familial importance.

In view of the overwhelming molecular evidence, the similarity in larval morphology and the weak morphological basis on which to separate adults into their respective families, Gnathophyllidae Dana, 1852 and Hymenoceridae Ortmann, 1890 are thus herein formally synonymised with Palaemonidae Rafinesque, 1815. As a result, the genera *Gnathophylleptum* d'Udekem d'Acoz, 2001, *Gnathophylloides* Schmitt, 1933, *Gnathophyllum* Latreille, 1819, *Levicaris* *Bruce, 1973*, and *Pycnocaris* *Bruce, 1972* (all formerly in Gnathophyllidae), as well as *Hymenocera* Latreille, 1819 and *Phyllognathia* Borradaile, 1915 (both formerly in Hymenoceridae), and their constituent species (see *De Grave & Fransen, 2011* for a listing) are now to be considered genera in Palaemonidae.

Our molecular analyses do not recover the two subfamilies within Palaemonidae, viz. Palaemoninae and Pontoniinae as reciprocally monophyletic clades. Instead, there appear to be at least two clades of Pontoniinae species (Clades I and II as per *Kou et al., 2013b*; *Gan et al., 2015*), including the ex-gnathophyllid and hymenocerid genera in Clade II, and yet these two clades of Pontoniinae do not necessarily form a clade with each other (*Fig. 1*). Within Palaemoninae, there is generally one large strongly supported clade of

species (here called palaemonid Clade III) (Fig. 1), which usually includes a couple more divergent species (*Palaemon concinnus*, *Palaemon elegans*). There are also a number of species of Palaemoninae which do not form a clade with other members of the subfamily, namely *Brachycarpus biunguiculatus*, *Nematopalaemon tenuipes*, and a clade of *Leander tenuicornis/Urocaridella pulchella*. When species of Palaemonidae are constrained to a clade without subfamily constraints, *Leander tenuicornis/Urocaridella pulchella* and *Nematopalaemon tenuipes* form a clade with the pontoniine Clade I (Fig. S2). These results do mirror the actual trees presented in Kou et al. (2013a) which equally do not show the two subfamilies to form monophyletic clades, although not discussed therein. Earlier, Bracken, De Grave & Felder (2009) had already hinted at the fact that the family as then defined was either para- or polyphyletic and the position of several pontoniine genera in their analysis was at odds with their current classification.

As already mentioned, the sole morphological character on which placement of a given genus in their respective subfamily is based is the ornamentation of the posterior margin of the telson, specifically the cuticular extensions. The terminology of these structures has been confusing in taxonomic descriptions, variously referred to as “spines”, “stout setae”, “spiniform setae”. Herein, we adhere to the definition of Watling (1989) that a “spine” is a non-articulated, cuticular extension, with a “seta” being articulated, although we do acknowledge that non-articulated setae exist (see Garm & Watling, 2013), but these do not enter the discussion here. Following the classification of setal types by Garm (2004), it is clear (Figs. 2–4) that the plesiomorphic condition in the family Palaemonidae comprises of a lateral pair of cuspidate setae, a submedian pair of elongated cuspidate setae and a median (or more) pair of plumose setae. Variations on this theme abound, with the median pair of plumose setae being thin and long to short(er) and stout, but nevertheless with a clear double row of poorly articulated setules on the shaft, thus still fitting the definition of plumose setae. In some taxa (Figs. 4E and 4F), the setules are reduced and the general appearance of the setae approaches that of cuspidate setae. Although cuspidate setae are known to occasionally have small outgrowths on their shaft, these are in the shape of denticles (Garm, 2004; Garm & Watling, 2013). We therefore interpret these median setae as reduced plumose setae.

Of course, concomitant with the rich bauplan diversity of pontoniine and palaemonine taxa, more variation exists than herein illustrated. For example, in *Hamopontonia*, the distal margin of the telson is emarginated and devoid of cuspidate and plumose setae; instead a number of simple setae are present (see Bruce, 1970) and in *Yeminicaris*, the distal margin is broadly rounded and devoid of cuspidate and plumose setae (see Bruce, 1997). A further example is illustrated in Fig. 10F, *Palaemon modestus*, where the median plumose setae are absent, the latter being characteristic for species of *Palaemon* previously considered to be a separate genus, *Exopalaemon* (see De Grave & Ashelby, 2013).

Nevertheless, from the evidence presented herein (Figs. 2–4) it is abundantly clear that the sole morphological character separating the two subfamilies does not hold true. In light of this, and supported by the molecular analyses, the subfamilies Palaemoninae Rafinesque

1815 and Pontoniinae *Kingsley, 1879* are herein formally synonymised and subfamilies are thus no longer recognised in Palaemonidae Rafinesque, 1815.

As in previous analyses (*Mitsuhashi et al., 2007; Bracken, De Grave & Felder, 2009; Kou et al., 2013a; Gan et al., 2015*) the position of Anchistioididae remains uncertain, although it is clear that the family is closely related to Palaemonidae as herein defined. Historically the sole genus in this family, *Anchistioides* was often considered to be in Pontoniinae (now Palaemonidae), for instance by *Kemp (1922), Gordon (1935)* and *Holthuis (1955)*. In more recent treatments, following *Chace (1992)* separate familial status has been the norm. *Chace & Bruce (1993)* remarked that the genus differs little from some pontoniines, separated only by seemingly minor adult morphological characters, but as pointed out by *Chace (1992)* and *Chace & Bruce (1993)*, the larvae, described by *Gurney (1936)* and *Gurney (1938)* differ sufficiently to support a separate family. As we cannot clarify the position of the genus *Anchistioides*, we refrain from analysing the morphological evidence and leave the family Anchistioididae as valid, until further evidence becomes available.

ACKNOWLEDGEMENTS

Bregje W. Brinkmann and Cessa Rauch (Naturalis Biodiversity Centre) are acknowledged for sequencing the H3 genes of *Gnathophylloides mineri*, *Manipontonia psamathe* and *Pontonia manningi*.

ADDITIONAL INFORMATION AND DECLARATIONS

Funding

Part of the present work was supported by a research grant (project no. 41476146) from the National Natural Science Foundation of China (NSFC). The funders had no role in study design, data collection and analysis, decision to publish, or preparation of the manuscript.

Grant Disclosures

The following grant information was disclosed by the authors:
National Natural Science Foundation of China (NSFC): 41476146.

Competing Interests

The authors declare there are no competing interests.

Author Contributions

- Sammy De Grave, Charles H.J.M. Fransen and Timothy J. Page conceived and designed the experiments, performed the experiments, analyzed the data, contributed reagents/materials/analysis tools, wrote the paper, prepared figures and/or tables, reviewed drafts of the paper.

DNA Deposition

The following information was supplied regarding the deposition of DNA sequences:
GenBank (see [Table 1](#) for accession numbers).

Supplemental Information

Supplemental information for this article can be found online at <http://dx.doi.org/10.7717/peerj.1167#supplemental-information>.

REFERENCES

- Abele LG, Felgenhauer BE. 1986.** Phylogenetic and phenetic relationships among the lower Decapoda. *Journal of Crustacean Biology* 6:385–400 DOI 10.2307/1548179.
- Ashelby CW, De Grave S, Johnson ML. 2015.** Preliminary observations on the mandibles of palaemonoid shrimp (Crustacea: Decapoda: Caridea: Palaemonoidea). *PeerJ* 3:e846 DOI 10.7717/peerj.846.
- Ashelby CW, Page TJ, De Grave S, Hughes JM, Johnson ML. 2012.** Regional scale speciation drives multiple invasions of freshwater in Palaemoninae (Decapoda). *Zoologica Scripta* 41:293–306 DOI 10.1111/j.1463-6409.2012.00535.x.
- Aznar-Cormano L, Brisset J, Chan TY, Corbari L, Puillandre N, Utge J, Zbinden M, Zuccon D, Samadi S. 2015.** An improved taxonomic sampling is a necessary but not sufficient condition for resolving inter-families relationships in Caridean decapods. *Genetica* 143:195–205 DOI 10.1007/s10709-014-9807-0.
- Baeza JA, Bauer RT, Okuno J, Thie M. 2014.** Molecular phylogeny of hinge-beak shrimps (Decapoda: Caridea: *Rhynchocinetes* and *Cinetorhynchus*) and allies: a formal test of familiar and generic monophyly using a multilocus phylogeny. *Zoological Journal of the Linnean Society* 172:426–450 DOI 10.1111/zoj.12173.
- Balss H. 1957.** Decapoda VIII Systematik. In: Gruner HE, ed. *Dr H.G. Bronns klassen und ordnungen des tierreichs. Fünfter Band, I. Abteilung. Buch 7 Lieferung 12*. Leipzig: Akademische Verlagsgesellschaft, 1505–1672.
- Bracken HD, De Grave S, Felder DL. 2009.** Phylogeny of the infraorder Caridea based on mitochondrial and nuclear genes (Crustacea: Decapoda). In: Martin JW, Crandall KA, Felder DL, eds. *Decapod crustacean phylogenetics*. Boca Raton, London: CRC Press, Taylor & Francis Group, 281–305.
- Bruce AJ. 1970.** Notes on some Indo-Pacific Pontoniinae. XV. *Hamopontonia corallicola* gen. nov., sp. nov., a new pontoniid shrimp from Hong Kong. *Crustaceana* 18:37–48 DOI 10.1163/156854070X00040.
- Bruce AJ. 1972.** *Pycnocaris chagoae* gen. nov., sp. nov., a new shrimp from the Chagos Archipelago (Decapoda Natantia, Gnathophyllidae). *Crustaceana* 23:50–64 DOI 10.1163/156854072X00066.
- Bruce AJ. 1973.** *Gnathophylloides robustus* sp. nov., a new commensal gnathophylloid shrimp from Western Australia, with the designation of a new genus *Levicaris* (Decapoda, Caridea). *Crustaceana* 24:17–32 DOI 10.1163/156854073X00038.
- Bruce AJ. 1986.** Observations on the family Gnathophyllidae Dana, 1852 (Crustacea: Decapoda). *Journal of Crustacean Biology* 6:463–470 DOI 10.2307/1548185.
- Bruce AJ. 1988.** A note on the first zoeal stage larva of *Hymenocera picta* Dana (Crustacea: Decapoda: Palaemonidae). *The Beagle, Records of the Northern Territory Museum of Arts and Sciences* 5:119–124.
- Bruce AJ. 1993.** *Kakaducaris glabra* gen. nov., sp. nov., a new freshwater shrimp from the Kakadu National Park, Northern Territory, Australia, Crustacea: Decapoda: Palaemonidae with the designation of a new subfamily Kakaducaridinae. *Hydrobiologia* 268:27–44 DOI 10.1007/BF00005738.

- Bruce AJ. 1995.** A synopsis of the Indo-West Pacific genera of the Pontoniinae (Crustacea: Decapoda: Pontoniinae). *Theses Zoologicae* **25**:1–172.
- Bruce AJ. 1997.** A new pontoniine shrimp genus (Crustacea: Decapoda) from the Yemen, with a note on other species. *Journal of Natural History* **31**:1213–1222 DOI [10.1080/00222939700770651](https://doi.org/10.1080/00222939700770651).
- Bruce AJ. 2002.** *Leander manningi*, a new palaemonine shrimp from Western Australia (Crustacea, Decapoda, Palaemonidae), with a review of the Indo-West Pacific species of the genus *Leander* E Desmarest, 1849. *Records of the Western Australian Museum* **21**:71–81.
- Chace Jr FA. 1992.** On the classification of the Caridea (Decapoda). *Crustaceana* **63**:70–80 DOI [10.1163/156854092X00299](https://doi.org/10.1163/156854092X00299).
- Chace Jr FA, Bruce AJ. 1993.** The caridean shrimps (Crustacea: Decapoda) of the Albatross Philippine Expedition 1907–1910, Part 6: Superfamily Palaemonoidea. *Smithsonian Contributions to Zoology* **543**:1–152 DOI [10.5479/si.00810282.543](https://doi.org/10.5479/si.00810282.543).
- Chan TY, Lei HC, Li CP, Chu KH. 2010.** Phylogenetic analysis using rDNA reveals polyphyly of Oplophoridae (Decapoda: Caridea). *Invertebrate Systematics* **24**:172–181 DOI [10.1071/IS09049](https://doi.org/10.1071/IS09049).
- De Grave S. 2007.** A new species of *Euryrhynchus* Miers, with a discussion of the systematic position of the Euryrhynchidae Holthuis (Crustacea, Decapoda). *Zoologischer Anzeiger* **246**:193–203 DOI [10.1016/j.jcz.2007.06.002](https://doi.org/10.1016/j.jcz.2007.06.002).
- De Grave S, Ashelby CW. 2013.** A re-appraisal of the systematic status of selected genera in Palaemoninae (Crustacea: Decapoda: Palaemonidae). *Zootaxa* **3734**:331–344 DOI [10.11646/zootaxa.3734.3.3](https://doi.org/10.11646/zootaxa.3734.3.3).
- De Grave S, Fransen CHJM. 2011.** Carideorum Catalogus: The recent species of the dendrobranchiate, stenopodidean, procarididean and caridean shrimps (Crustacea: Decapoda). *Zoologische Mededelingen* **85**:195–589.
- De Grave S, Wood L. 2011.** Further occurrences of tegumental scales in caridean shrimps (Crustacea: Decapoda: Caridea). *Crustacean Research* **40**:41–50.
- De Grave S, Li CP, Tsang LM, Chu KH, Chan TY. 2014.** Unweaving hippolytoid systematics (Crustacea, Decapoda, Hippolytidae): resurrection of several families. *Zoologica Scripta* **43**:496–507 DOI [10.1111/zsc.12067](https://doi.org/10.1111/zsc.12067).
- De Grave S, Pentcheff ND, Ahyong ST, Chan TY, Crandall KA, Dworschak PC, Felder DL, Feldmann RM, Fransen CHJM, Goulding LYD, Lemaitre R, Low MEY, Martin JW, Ng PKL, Schweitzer CE, Tan SH, Tshudy D, Wetzer R. 2009.** A classification of living and fossil genera of decapod crustaceans. *Raffles Bulletin of Zoology (Suppl. 21)*:1–109.
- Edgar RC. 2004.** MUSCLE: multiple sequence alignment with high accuracy and high throughput. *Nucleic Acids Research* **32**:1792–1797 DOI [10.1093/nar/gkh340](https://doi.org/10.1093/nar/gkh340).
- Fransen CHJM. 1994.** Marine palaemonoid shrimps of the Netherlands Seychelles Expedition 1992–1993. *Zoologische Verhandelingen* **297**:85–152.
- Gan Z, Li X, Kou Q, Chan T, Chu K, Huang H. 2015.** Systematic status of the caridean families Gnathophyllidae Dana and Hymenoceridae Ortmann (Crustacea: Decapoda): a further examination based on molecular and morphological data. *Chinese Journal of Oceanology and Limnology* **33**:149–158 DOI [10.1007/s00343-015-4007-z](https://doi.org/10.1007/s00343-015-4007-z).
- Garm A. 2004.** Revising the definition of the crustacean seta and setal classification systems based on examinations of the mouthpart setae of seven species of decapods. *Zoological Journal of the Linnean Society* **142**:233–252 DOI [10.1111/j.1096-3642.2004.00132.x](https://doi.org/10.1111/j.1096-3642.2004.00132.x).

- Garm A, Watling L. 2013.** The crustacean integument: Setae, setules, and other ornamentation. In: Watling L, Thiel M, eds. *The natural history of the Crustacea. Vol. 1, functional morphology and diversity*. Oxford: Oxford University Press, 167–198.
- Gordon I. 1935.** On new and imperfectly known species of Crustacea Macrura. *The Journal of the Linnean Society. Zoology* **39**:307–351 DOI [10.1111/j.1096-3642.1935.tb00075.x](https://doi.org/10.1111/j.1096-3642.1935.tb00075.x).
- Gurney R. 1936.** Notes on some decapod Crustacea of Bermuda. III. The larvae of the Palaemonidae. *Proceedings of the Zoological Society of London* **1936**:619–623 DOI [10.1111/j.1469-7998.1936.tb06276.x](https://doi.org/10.1111/j.1469-7998.1936.tb06276.x).
- Gurney R. 1938.** The larvae of the decapod Crustacea, Palaemonidae and Alpheidae. In: *Great Barrier Reef Expedition, 1928–1929, Scientific Reports*, 6. 1–60.
- Holthuis LB. 1951.** A general revision of the Palaemonidae (Crustacea Decapoda Natantia) of the Americas. I. The subfamilies Euryrhynchidae and Pontoniinae. *Occasional Papers of the Allan Hancock Foundation* **11**:1–332.
- Holthuis LB. 1955.** The recent genera of the caridean and stenopodidean shrimps (Class Crustacea, order Decapoda, supersection Natantia) with keys for their determination. *Zoologische Verhandelingen* **26**:1–157.
- Holthuis LB. 1993.** *The recent genera of the caridean and stenopodidean shrimps (Crustacea, Decapoda) with an appendix on the order Amphionidacea*. Leiden: Nationaal Natuurhistorisch Museum.
- Kass RE, Raftery AE. 1995.** Bayes factors. *Journal of the American Statistical Association* **90**:773–795 DOI [10.1080/01621459.1995.10476572](https://doi.org/10.1080/01621459.1995.10476572).
- Kemp S. 1922.** Notes on Crustacea Decapoda in the Indian museum, XV. Pontoniinae. *Records of the Indian Museum* **24**:113–288.
- Kingsley JS. 1879.** List of the North American Crustacea belonging to the suborder Caridea. *Bulletin of the Essex Institute* **10**(for 1878):53–71.
- Kou Q, Li X, Chan TY, Chu KH, Gan Z. 2013a.** Molecular phylogeny of the superfamily Palaemonoidea (Crustacea: Decapoda: Caridea) based on mitochondrial and nuclear DNA reveals discrepancies with the current classification. *Invertebrate Systematics* **27**:502–514 DOI [10.1071/IS13005](https://doi.org/10.1071/IS13005).
- Kou Q, Li X, Chan TY, Chu KH, Huang H, Gan Z. 2013b.** Phylogenetic relationships among genera of the *Periclimenes* complex (Crustacea: Decapoda: Pontoniinae) based on mitochondrial and nuclear DNA. *Molecular Phylogenetics and Evolution* **68**:14–22 DOI [10.1016/j.ympev.2013.03.010](https://doi.org/10.1016/j.ympev.2013.03.010).
- Li CP, De Grave S, Chan TY, Lei HC, Chu KH. 2011.** Molecular systematics of caridean shrimps based on five nuclear genes: implications for superfamily classification. *Zoologischer Anzeiger* **250**:270–279 DOI [10.1016/j.jcz.2011.04.003](https://doi.org/10.1016/j.jcz.2011.04.003).
- Meyer R, Lehmann T, Melzera RR, Geiselbrech H. 2014.** Morphology of the first zoeal stage of the Mediterranean bumblebee shrimp *Gnathophyllum elegans* studied with both light microscopy and scanning EM. *Journal of the Marine Biological Association of the United Kingdom* **94**:151–158 DOI [10.1017/S002531541300115X](https://doi.org/10.1017/S002531541300115X).
- Mitsuhashi M, Sin YW, Lei HC, Chan TY, Chu KH. 2007.** Systematic status of the caridean families Gnathophyllidae Dana and Hymenoceridae Ortmann (Crustacea: Decapoda): a preliminary examination based on nuclear rDNA sequences. *Invertebrate Systematics* **21**:613–622 DOI [10.1071/IS06018](https://doi.org/10.1071/IS06018).
- Page TJ, Short JW, Humphrey CJ, Hillyer MJ, Hughes JM. 2008.** Molecular systematics of the Kakaducarididae (Crustacea: Decapoda: Caridea). *Molecular Phylogenetics and Evolution* **46**:1003–1014 DOI [10.1016/j.ympev.2007.12.020](https://doi.org/10.1016/j.ympev.2007.12.020).

- Ronquist F, Teslenko M, van der Mark P, Ayres DL, Darling A, Hohna S, Larget B, Liu L, Suchard MA, Huelsenbeck JP. 2012.** MrBayes 3.2: efficient Bayesian phylogenetic inference and model choice across a large model space. *Systematic Biology* **61**:539–542 DOI [10.1093/sysbio/sys029](https://doi.org/10.1093/sysbio/sys029).
- Short JW, Humphrey CL, Page TJ. 2013.** Systematic revision and reappraisal of the Kakaducarididae Bruce (Crustacea: Decapoda: Caridea) with the description of three new species of *Leptopalaemon* Bruce & Short. *Invertebrate Systematics* **27**:87–117 DOI [10.1071/IS12016](https://doi.org/10.1071/IS12016).
- Sollaud E. 1910.** Sur les affinités des genres *Urocaris* (Stimpson) et *Palaemonella* (Dana), et consideration sur l'évolution des crevettes de la famille Pontoniides. *Comptes Rendus de l'Academie des Sciences, Paris* **151**:1158–1161.
- Spence Bate C. 1888.** *Report on the Crustacea Macrura collected by the Challenger during the years 1873–76, Report on the Scientific Results of the Voyage of H.M.S. "Challenger" during the years 1873–76*, 24. i-xc-1-942, Plates 1–157.
- Tamura K, Stecher G, Peterson D, Filipski A, Kumar S. 2013.** MEGA6: molecular evolutionary genetics analysis version 6.0. *Molecular Biology and Evolution* **30**:2725–2729 DOI [10.1093/molbev/mst197](https://doi.org/10.1093/molbev/mst197).
- Watling L. 1989.** A classification system for crustacean setae based on the homology concept. In: Felgenhauer BE, Watling L, Thistle AB, eds. *Functional morphology of feeding and grooming in Crustacea*. Rotterdam: A.A. Balkema, 15–26.
- Wicksten MK. 2010.** Infraorder Caridea Dana, 1852. In: Schram FJ, von Vaupel Klein JC, eds. *Treatise on zoology—anatomy, taxonomy, biology. The Crustacea. Volume 9, part A. Eucarida: Euphausiacea, Amphionidacea, and Decapoda (partim)*. Leiden: Brill, 165–206.
- Wong ML, Pérez-Moreno JL, Chan TY, Frank TM, Bracken-Grissom HD. 2015.** Phylogenetic and transcriptomic analyses reveal the evolution of bioluminescence and light detection in marine deep-sea shrimps of the family Oplophoridae (Crustacea: Decapoda). *Molecular Phylogenetics and Evolution* **83**:278–292 DOI [10.1016/j.ympev.2014.11.013](https://doi.org/10.1016/j.ympev.2014.11.013).